

MINNESOTA STATE COLLEGES & UNIVERSITIES

2007 - 2008

# Go Places.



## 2-year state colleges

<b>ALEXANDRIA TECHNICAL COLLEGE</b> Alexandria	www.alextech.edu 1-888-234-1222	page 12
<b>ANOKA-RAMSEY COMMUNITY COLLEGE</b> Cambridge, Coon Rapids	www.anokaramsey.edu (763) 433-1100	page 12
<b>ANOKA TECHNICAL COLLEGE</b> Anoka	www.anokatech.edu (763) 576-4850	page 13
<b>CENTRAL LAKES COLLEGE</b> Brainerd, Staples	www.clcmn.edu 1-800-933-0346	page 14
<b>CENTURY COLLEGE</b> White Bear Lake	www.century.edu 1-800-228-1978	page 14
<b>DAKOTA COUNTY TECHNICAL COLLEGE</b> Rosemount	www.dctc.edu 1-877-937-3282	page 15
<b>FOND DU LAC TRIBAL &amp; COMMUNITY COLLEGE</b> Cloquet	www.fdlctc.edu 1-800-657-3712	page 16
<b>HENNEPIN TECHNICAL COLLEGE</b> Brooklyn Park, Eden Prairie	www.hennepintech.edu 1-800-345-4655	page 16
<b>INVER HILLS COMMUNITY COLLEGE</b> Inver Grove Heights	www.inverhills.edu (651) 450-8500	page 17
<b>LAKE SUPERIOR COLLEGE</b> Duluth	www.lsc.edu 1-800-432-2884	page 18
<b>MINNEAPOLIS COMMUNITY &amp; TECHNICAL COLLEGE</b> Minneapolis	www.minneapolis.edu 1-800-247-0911	page 18
<b>MINNESOTA STATE COLLEGE - SOUTHEAST TECHNICAL</b> Red Wing, Winona	www.southeastmn.edu 1-877-853-8324	page 19
<b>MINNESOTA STATE COMMUNITY &amp; TECHNICAL COLLEGE</b> Detroit Lakes, Fergus Falls, Moorhead, Wadena	www.minnesota.edu 1-888-MY-MSCTC (696-7282)	page 20
<b>MINNESOTA WEST COMMUNITY &amp; TECHNICAL COLLEGE</b> Canby, Granite Falls, Jackson, Pipestone, Worthington	www.mnwest.edu 1-800-658-2330	page 20
<b>NORMANDEALE COMMUNITY COLLEGE</b> Bloomington	www.normandale.edu 1-866-880-8740	page 21
<b>NORTH HENNEPIN COMMUNITY COLLEGE</b> Brooklyn Park	www.nhcc.edu 1-800-818-0395	page 22
<b>NE - HIBBING COMMUNITY COLLEGE*</b> Hibbing	www.hibbing.edu 1-800-224-4422	page 23
<b>NE - ITASCA COMMUNITY COLLEGE*</b> Grand Rapids	www.itascacc.edu 1-800-996-6422	page 23
<b>NE - MESABI RANGE COMMUNITY &amp; TECHNICAL COLLEGE*</b> Eveleth, Virginia	www.mesabirange.edu 1-800-657-3860	page 23
<b>NE - RAINY RIVER COMMUNITY COLLEGE*</b> International Falls	www.rrcc.mnscu.edu 1-800-456-3996	page 23

## Give us a call or check out our Web sites.

<b>NE - VERMILION COMMUNITY COLLEGE*</b> Ely	www.vcc.edu 1-800-657-3608	page 23
<b>NORTHLAND COMMUNITY &amp; TECHNICAL COLLEGE</b> East Grand Forks, Thief River Falls	www.northlandcollege.edu 1-800-959-NCTC (6282)	page 24
<b>NORTHWEST TECHNICAL COLLEGE**</b> Bemidji	www.ntcmn.edu 1-800-942-8324	page 24
<b>PINE TECHNICAL COLLEGE</b> Pine City	www.pinetech.edu 1-800-521-7463	page 25
<b>RIDGEWATER COLLEGE</b> Hutchinson, Willmar	www.ridgewater.edu 1-800-722-1151	page 26
<b>RIVERLAND COMMUNITY COLLEGE</b> Albert Lea, Austin	www.riverland.edu 1-800-247-5039	page 26
<b>ROCHESTER COMMUNITY &amp; TECHNICAL COLLEGE</b> Rochester	www.rctc.edu 1-800-247-1296	page 27
<b>ST. CLOUD TECHNICAL COLLEGE</b> St. Cloud	www.sctc.edu 1-800-222-1009	page 28
<b>SAINT PAUL COLLEGE</b> St. Paul	www.saintpaul.edu 1-800-227-6029	page 28
<b>SOUTH CENTRAL COLLEGE</b> Faribault, North Mankato	www.southcentral.edu 1-800-722-9359	page 29

\*NE stands for Northeast Higher Education District, a consortium of five state colleges:

Hibbing, Itasca, Mesabi Range, Rainy River and Vermilion.

\*\*Northwest Technical College is aligned with Bemidji State University.

## 4-year state universities

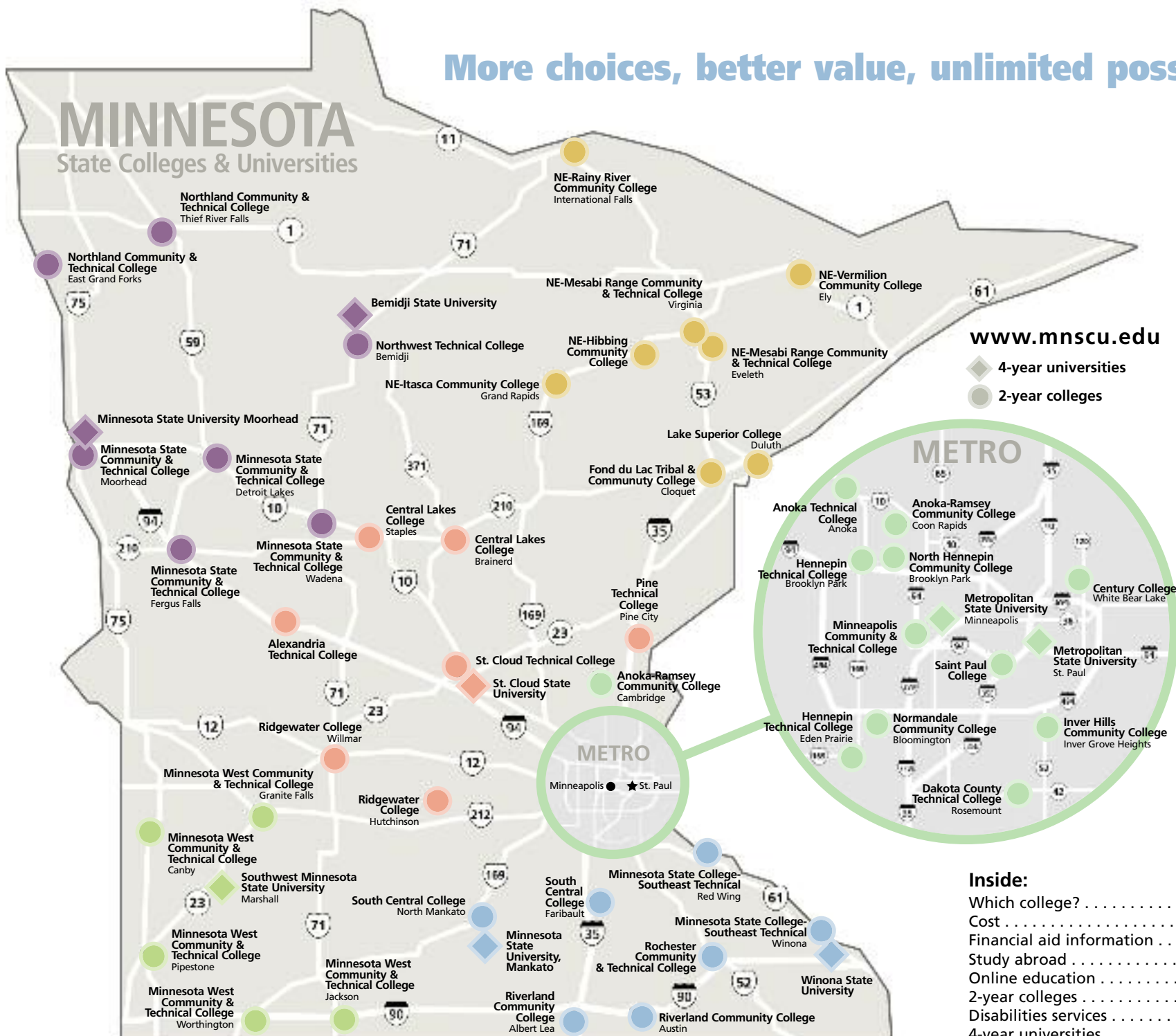
<b>BEMIDJI STATE UNIVERSITY</b> Bemidji	www.bemidjistate.edu 1-877-BEMIDJI (236-4354)	page 33
<b>METROPOLITAN STATE UNIVERSITY</b> St. Paul, Minneapolis	www.metrostate.edu (651) 793-1300	page 34
<b>MINNESOTA STATE UNIVERSITY, MANKATO</b> Mankato	www.mnsu.edu Toll-free: 1-800-722-0544	page 35
<b>MINNESOTA STATE UNIVERSITY MOORHEAD</b> Moorhead	www.mnstate.edu 1-800-593-7246	page 36
<b>ST. CLOUD STATE UNIVERSITY</b> St. Cloud	www.stcloudstate.edu 1-877-654-7278	page 37
<b>SOUTHWEST MINNESOTA STATE UNIVERSITY</b> Marshall	www.southwestmsu.edu 1-800-642-0684	page 38
<b>WINONA STATE UNIVERSITY</b> Winona	www.winona.edu 1-800-DIAL-WSU (342-5978)	page 39

The University of Minnesota is not a part of the Minnesota State Colleges and Universities system. For U of M admissions information, contact (612) 625-2008 or [www.umn.edu](http://www.umn.edu).



# More choices, better value, unlimited possibilities

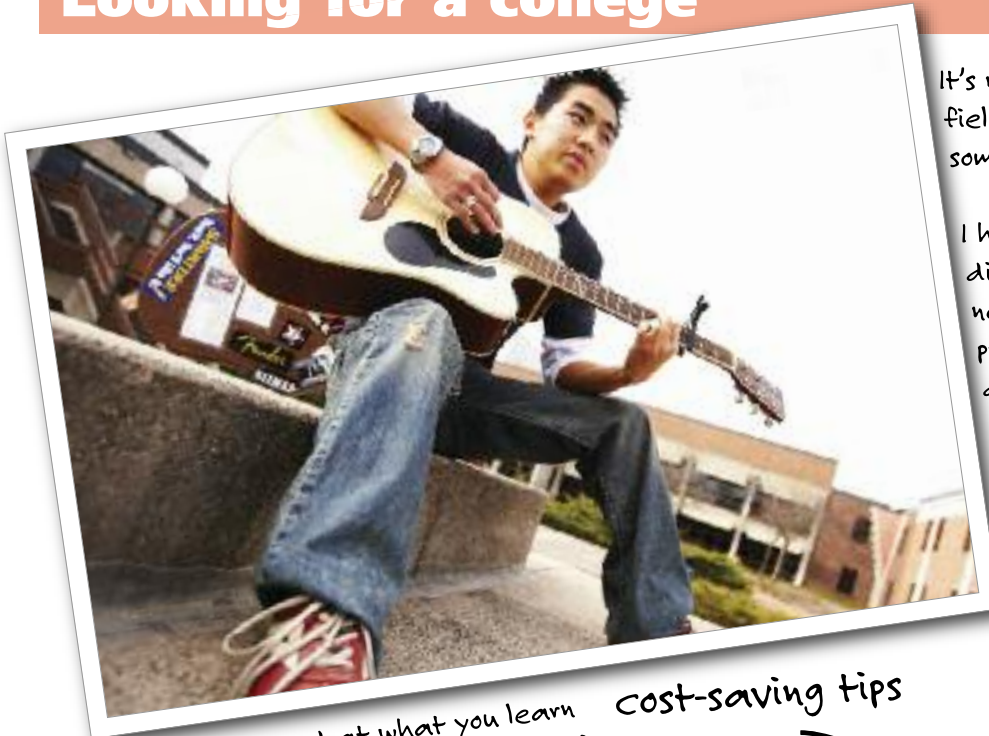
## MINNESOTA State Colleges & Universities



### Inside:

Which college? . . . . .	2
Cost . . . . .	3
Financial aid information . . . . .	4
Study abroad . . . . .	5
Online education . . . . .	6
2-year colleges . . . . .	7
Disabilities services . . . . .	19
4-year universities . . . . .	30

## Looking for a college



You'd be amazed at what you learn when you compare college costs. Tuition at a public two-year college or four-year state university is thousands of dollars a year lower than at private colleges or trade schools.

### cost-saving tips

It's never too early to start planning for college. I'll be using this book as a field guide to the 32 Minnesota State Colleges and Universities. I'll make some field notes to pass along what I learn.

I had no idea there are so many different types of colleges. I'll need to think about what programs I'm interested in, do some research and visit campuses to see which type fits best with my personality, budget and career plans.



Scholarships! Who knew? That's money for college that I won't have to pay back. The college I'm considering has a web site where I found lots of information about scholarships that are available. I found it by going to [www.mnscu.edu/scholarships](http://www.mnscu.edu/scholarships).

## Which type of college is right for you?

- **Technical colleges** are two-year state colleges that teach knowledge and skills leading to specific careers. You can complete a program in two years or less and be ready for a job.
- **Community colleges** are two-year colleges that enable you to start on a bachelor's degree. You can take the first two years at a community college, then transfer to a four-year university to finish. Or you can take a career program leading directly to a job.
- **Combined community and technical colleges** enable you to start on a bachelor's degree and transfer after two years, or you can enroll in a technical program to learn skills that lead directly to a career.
- **State universities** are four-year institutions offering bachelor's, master's and advanced degrees. Most offer on-campus housing and a full range of student activities.

# College cost comparison

Tuition at Minnesota State Colleges and Universities is lower than tuition at many other colleges, universities and trade schools because the state of Minnesota pays a portion of the cost of education for Minnesota residents.

For every dollar you pay in tuition, the state of Minnesota pays \$1.07 to support your education.

## Room and board costs

The cost for a double room and board at a state university ranges from \$5,101 to \$5,874 per year. Some two-year colleges also provide housing on campus or nearby, and many others can help you find housing in the area. The costs of these options will vary.

## Annual tuition and fees, 2007-2008

### 2-year colleges

#### Minnesota State Colleges

\$4,329	Alexandria Technical College
\$4,015	Anoka-Ramsey Community College
\$4,586	Anoka Technical College
\$4,357	Central Lakes College
\$4,410	Century College
\$4,749	Dakota County Technical College
\$4,365	Fond du Lac Tribal & Community College
\$4,187	Hennepin Technical College
\$4,535	Inver Hills Community College
\$4,151	Lake Superior College
\$4,442	Minneapolis Community & Technical College
\$4,502	Minnesota State College – Southeast Technical
\$4,629	Minnesota State Community & Technical College
\$4,692	Minnesota West Community & Technical College
\$4,512	Normandale Community College
\$4,421	North Hennepin Community College
\$4,344	NE-Hibbing Community College
\$4,337	NE-Itasca Community College
\$4,344	NE-Mesabi Range Community & Technical College
\$4,380	NE-Rainy River Community College
\$4,374	NE-Vermilion Community College
\$4,799	Northland Community & Technical College
\$4,704	Northwest Technical College
\$4,206	Pine Technical College
\$4,517	Ridgewater College
\$4,598	Riverland Community College
\$4,656	Rochester Community & Technical College
\$4,424	St. Cloud Technical College
\$4,314	Saint Paul College
\$4,436	South Central College

\$9,450–\$17,100*	Aveda Institute
\$12,840	University of Phoenix, Mpls./St. Paul campus
\$13,320–\$17,760*	Minn. School of Business/Globe
\$14,000–\$15,500*	Dunwoody Institute
\$16,455	Brown College

\*Costs vary by program.

### 4-year colleges and universities

#### Minnesota State Universities

\$6,507	Bemidji State University
\$5,293	Metropolitan State University
\$5,795	Minnesota State University, Mankato
\$5,585	Minnesota State University Moorhead
\$5,719	St. Cloud State University
\$6,242	Southwest Minnesota State University
\$6,117	Winona State University
\$9,331	University of Minnesota, Morris
\$9,600	University of Minnesota, Duluth
\$9,882	University of Minnesota, Twin Cities
\$17,760	Bethany Lutheran College
\$22,350	Concordia College (Moorhead)
\$22,398	Saint Mary's University of Minn.
\$23,496	Concordia University (St. Paul)
\$24,510	Bethel University
\$24,539	Augsburg College
\$24,990	College of St. Scholastica
\$25,942	College of St. Catherine
\$26,274	University of St. Thomas
\$26,530	Saint John's University
\$26,541	Hamline University
\$26,570	College of Saint Benedict
\$27,200	Minneapolis College of Art & Design
\$28,535	Gustavus Adolphus College
\$30,600	St. Olaf College
\$33,694	Macalester College
\$36,156	Carleton College

The costs for Minnesota State Colleges and Universities are for average full-time tuition and fees per year. The costs do not include room and board for any institution listed. Some colleges and universities charge additional fees. Fees vary depending on program. For exact tuition and fees, contact the admissions office at the college or university that interests you.



# See how financial aid could work for you

Here are examples of how financial aid is helping three full-time students pay for college.

For all three students, federal and state grants (which do not need to be paid back) cover a significant part of the cost. The total costs are estimates that could be much lower, depending on your circumstances. In addition, some families take a bank loan to help pay the net costs of college.

## How to apply for financial aid

Complete a Free Application for Federal Student Aid, or FAFSA, form after Jan. 1 of your senior year. You can complete the form online at [www.fafsa.ed.gov](http://www.fafsa.ed.gov) or pick up the form at your school counselor's office. For help in completing the form, go to your high school counselor or the financial aid office at the college or university you plan to attend.

## Reduced out-of-state tuition

Students from other states don't always have to pay higher tuition if they want to attend the Minnesota State Colleges and Universities. If you live in Wisconsin, North Dakota, South Dakota or Manitoba, Canada, you're eligible for tuition rates similar to those paid by Minnesota residents. And 22 of the state colleges and universities allow students from other states to pay the lower in-state rates, so ask the college or university about its tuition charges.

### Ginger's costs for one year

Ginger is a freshman at a state university. She has a brother in high school, and her parents have no significant savings. Her family's income: \$30,000.

#### College costs for one year

2007-2008 tuition:	\$ 5,399
Fees:	496
Estimated room and board:*	5,692
Estimated living expenses:**	3,368
Cost of attendance:	\$ 14,955

#### Ginger's financial aid

Federal grants (do not need to be paid back):	\$ 5,110
Minnesota grant (does not need to be paid back):	2,143
Work study earnings:	3,840
Student loan (to be paid back after graduation):***	3,862
Total financial aid:	\$ 14,955

**Cost to Ginger's family: \$ 0**

\* Estimated cost of campus dormitory and food service.

\*\* Estimated expenses including transportation, books, clothing and social activities.

\*\*\* Could include a combination of government and private loans.

## Tax credits

Some college students also benefit from two federal income tax credit programs, the Hope Scholarship and the Lifetime Learning tax credit. These may apply to you or your family, depending on your financial circumstances.

### Jacob's costs for one year

Jacob is a freshman at a two-year college in the Twin Cities. He has a brother in college, and his parents own a home but have no other significant savings. His family's income: \$45,000.

#### College costs for one year

2007-2008 tuition:	\$ 4,001
Fees:	442
Estimated room and board:*	7,800
Estimated living expenses:**	6,200
Cost of attendance:	\$ 18,443

#### Jacob's financial aid

Federal grants (do not need to be paid back):	\$ 2,860
Minnesota grant (does not need to be paid back):	1,363
Work study earnings:	5,000
Student loan (to be paid back after graduation):***	7,802
Total financial aid:	\$ 17,025

**Cost to Jacob's family: \$ 1,418**

\* Estimated cost of campus dormitory and food service.

\*\* Estimated expenses including transportation, books, clothing and social activities.

\*\*\* Could include a combination of government and private loans.

## Veterans

Veterans are welcomed at the state colleges and universities. If you've served in the armed forces, you might be eligible for help with paying for college. Stop by one of the on-campus veterans centers for information, support and assistance. Also, check with the financial aid office about benefits from the new Minnesota GI Bill.

### Chris' costs for one year

Chris is a freshman at a state university. She has a brother in college and her single mother owns a home but has no other significant savings. Her family's income: \$60,000.

#### College costs for one year

2007-2008 tuition:	\$ 5,399
Fees:	496
Estimated room and board:*	5,692
Estimated living expenses:**	3,368
Cost of attendance:	\$ 14,955

#### Chris' financial aid

Federal grants (do not need to be paid back):	\$ 0
Minnesota grant (does not need to be paid back):	2,035
Work study earnings:	3,840
Student loan (to be paid back after graduation):***	3,500
Total financial aid:	\$ 9,375

**Cost to Chris' family: \$ 5,580**

\* Estimated cost of campus dormitory and food service.

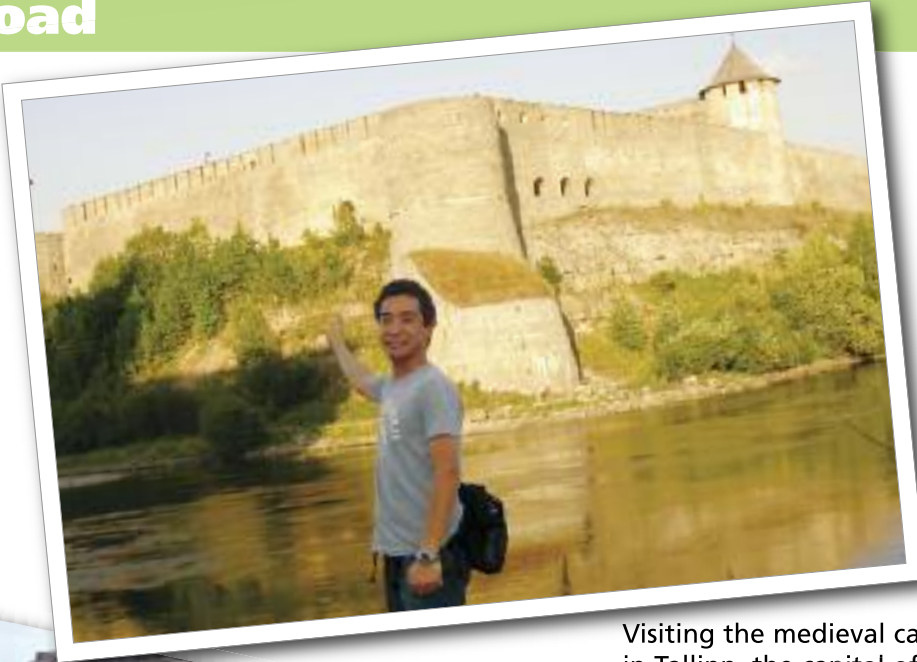
\*\* Estimated expenses including transportation, books, clothing and social activities.

\*\*\* Could include a combination of government and private loans.



# Learning through study abroad

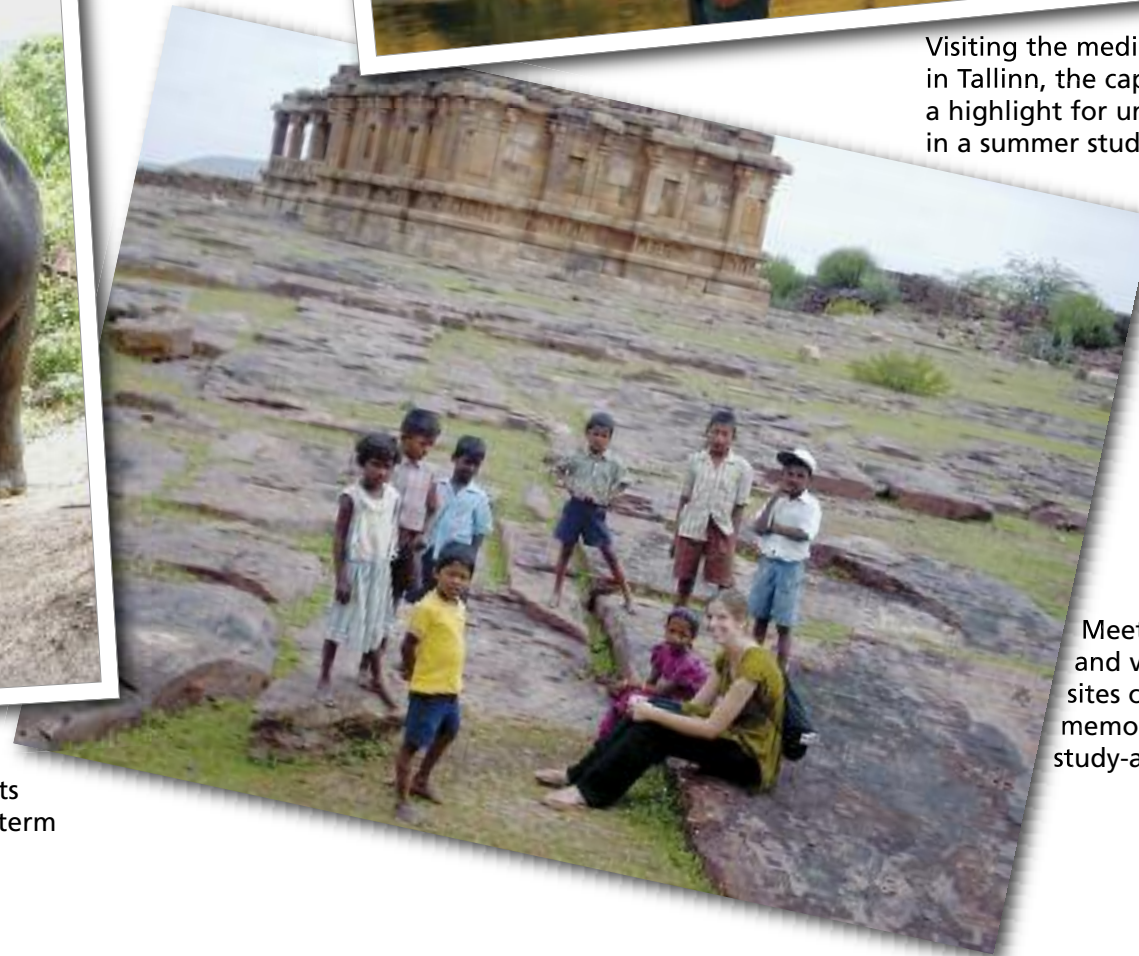
*I'm definitely interested in studying abroad, and the state colleges and universities have lots of programs in Europe, Asia, Africa and other parts of the world. I'll get more information from the college and university admissions offices.*



Visiting the medieval castle town in Tallinn, the capital of Estonia, was a highlight for university students in a summer study-abroad program.



An elephant trek through the jungle was among lighter moments for university students on a short-term study trip to Thailand.



Meeting local children and visiting ancient sites contribute to the memorable experiences of study-abroad programs.

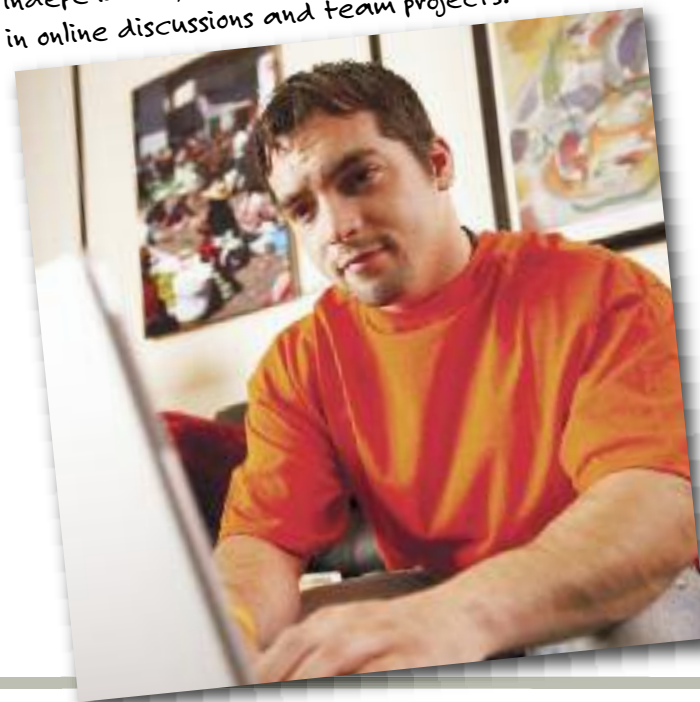


## Online education: [www.minnesotaonline.org](http://www.minnesotaonline.org)



I found out that I can take a single course or all the courses I'd need for a diploma, certificate, associate degree, bachelor's degree or master's degree online through the Minnesota State Colleges and Universities. The online degrees all are accredited, too. Taking online courses means a lot fewer trips to a classroom and more flexibility with my work schedule. Online courses could help me finish college on time.

I checked out the Minnesota Online Web site [www.minnesotaonline.org](http://www.minnesotaonline.org), where I can look up the classes and degrees offered online. And I learned that online classes are best for students who can work independently, write well and are willing to participate in online discussions and team projects.



## Online education helps busy students meet their goals

- Through the [www.minnesotaonline.org](http://www.minnesotaonline.org) Web site, students can search among thousands of online courses and more than 200 degree, certificate and diploma programs offered by the 32 state colleges and universities.
- Minnesota Online also provides student support, pre-admissions planning and advising seven days a week through e-mail, Ask a Question, Live Chat and a toll-free number.
- You can find many online programs on the charts beginning on Page 8 and 31 under the category of [minnesotaonline.org](http://minnesotaonline.org). Programs include accounting, business management, child care, computer networking, dental assistant, elementary education, information security, law enforcement, liberal arts, marketing, medical coding, nursing, paralegal studies, and Web design and development.

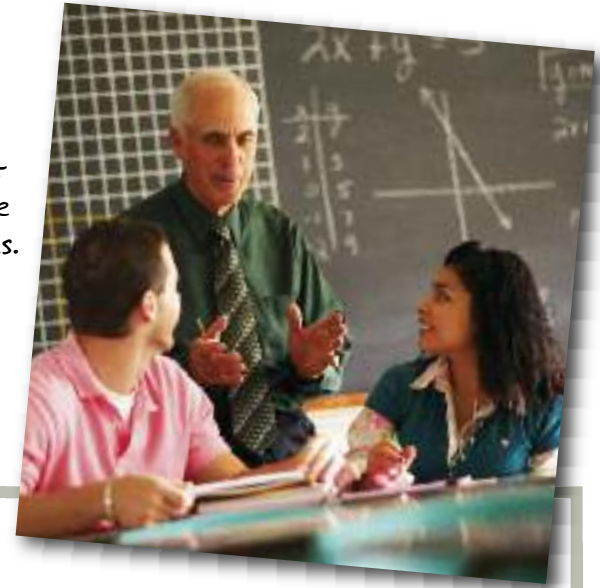


## 2-year state colleges



The two-year state community and technical colleges have an open admissions policy. All I'd need is my high school diploma or a GED. I don't even have to take a standardized test, and my high school grades and class rank are not considered.

Once I'm admitted, I'll take a placement test. That will tell me whether I'd need to take remedial courses, which will not count toward a degree, before I can take college-level courses. I hear that if you've taken a "college prep" curriculum, you're more likely to do well on the test.



## Plan ahead to make transfer easy

- College students often decide to transfer from one institution to another. About 40 percent of all new students at the state universities each year are transfer students, and about half of them are transferring from community and technical colleges. The state colleges and universities work together to make transferring easy.
- For information about transferring, contact a transfer specialist, available on every campus, who can answer questions and help with course selection. Their names and other information about transferring can be found at [www.mntransfer.org](http://www.mntransfer.org). Plan ahead. Let your college advisor know if you might want to transfer someday. Some courses and programs are designed to transfer, while others are not. Be sure to ask before you register for classes.
- Students usually pursue the Associate in Arts degree if they know they want to transfer to complete a four-year liberal arts degree. Here are some examples of majors you can start by enrolling in an Associate in Arts degree program: anthropology, art, biology, biotechnology, education, engineering, English, geography, history, languages, mass communications, mathematics, philosophy, physics, political science, psychology, social work, speech and preprofessional programs such as dentistry, law, medicine and veterinary science.
- All 32 state colleges and universities are accredited and offer all or part of the Minnesota Transfer Curriculum, a package of general education courses accepted for transfer to the other state colleges and universities.

Some programs are online only. Not all of the system's 3,500 programs are listed here. To find more, go to [www.mnscu.edu](http://www.mnscu.edu).

Check out [www.mnscu.edu](http://www.mnscu.edu)



C

Some programs are online only. Not all of the system's 3,500 programs are listed here. To find more, go to [www.mnscu.edu](http://www.mnscu.edu).

**·ONLINE·**

[illegible]



Some programs are online only. Not all of the system's 3,500 programs are listed here. To find more, go to [www.mnscu.edu](http://www.mnscu.edu).

11

**ALEXANDRIA TECHNICAL COLLEGE**[www.alextech.edu](http://www.alextech.edu)**Tuition and fees (2007-2008):** \$4,329**FAFSA code:** 005544**Enrollment:**

Total number students served	3,356
Full-year-equivalent enrollment	2,071
Percent male	57.8%
Percent female	42.2%
Percent students of color	3.0%

**Degrees offered:**

Associate in Science, Associate in Applied Science, diplomas, certificates

**Largest programs:**

Law enforcement, nursing, diesel mechanics (partnership with Ziegler, Inc., the Caterpillar dealer for Minnesota and Iowa), carpentry, interior design, marine and small engine mechanic (partnership with Arctic Cat)

**Unique programs:**

Health and fitness specialist, communication art and design, e-commerce Web developer, hotel-restaurant management, fluid power

**City/population:**  
Alexandria/11,043

technology, fashion management, medical device manufacturing

**Student activities:**

Intramural sports, service learning, Student Senate, Delta Epsilon Chi, Business Professionals of America, Phi Theta Kappa honor society, SkillsUSA, American Society of Interior Designers, National Kitchen and Bath Association, National Association of Home Builders, Law Enforcement Club, Child Development Club

**Housing:**

The college has no on-campus housing, but numerous rental units are within two miles of the campus. The college provides a housing list describing rental facilities.

**To arrange a campus visit:**  
1-888-234-1222, ext. 4520**Admissions: (320) 762-4520**  
TTY: 1-800-627-3529**1601 Jefferson St.**  
**Alexandria, MN 56308****Alexandria Technical College Highlights**

- Located in a recreational area with more than 50 lakes that offer opportunities for fishing, hiking, biking, walking and downhill and cross-country skiing.
- A new partnership with Bemidji State University allows students to earn associate degrees in Alexandria and then transfer for the remaining two years of their bachelor's degrees.
- Located two hours northwest of Minneapolis-St. Paul and 90 minutes southwest of Fargo-Moorhead on Interstate 94.
- In 2006-2007, students enrolled from 86 of Minnesota's 87 counties and 14 states.
- Personal attention from faculty and staff.
- Hands-on learning in a friendly, supportive atmosphere.
- Excellent technology, equipment and facilities.
- Member of Distance Minnesota, an online college experience for students seeking an

online degree or course. Other member colleges are Northwest Technical College, Minnesota State Community and Technical College, and Northland Community and Technical College.

- Many two-year associate degrees that transfer to other colleges such as Minnesota State University, Mankato; Minnesota State University Moorhead; and Southwest Minnesota State University.
- Affordable – the college's foundation awards more than \$100,000 in student support and scholarships each year. Recently, 85 percent of students received financial aid totaling more than \$8 million.
- Choose from more than 55 programs.
- Online degrees in business administration, computer information systems, human services practitioner, individualized professional studies and paralegal.
- In 2005, 95.7 percent of graduates found jobs related to their field of study.

**ANOKA-RAMSEY COMMUNITY COLLEGE**[www.anokaramsey.edu](http://www.anokaramsey.edu)**Tuition and fees (2007-2008):** \$4,015**FAFSA code:** 002332**Enrollment:**

Total number students served	9,833
Full-year-equivalent enrollment	4,540
Percent male	35.4%
Percent female	64.6%
Percent students of color	9.6%

**Degrees offered:**

Associate in Arts, Associate in Fine Arts, Associate in Science, Associate in Applied Science, diplomas, certificates

**Largest programs:**

General education/liberal arts transfer programs, computer networking and telecommunications, nursing, business, physical therapist assistant

**Unique programs:**

Fine arts, biomedical technology, environmental science, geographic information systems, integrative health and healing, music, physical

**City/population:**  
Cambridge/7,057  
Coon Rapids/63,480

therapist assistant, pre-engineering; courses in glass-blowing, Chinese language study abroad, American Sign Language, on-campus bachelor's and master's degree programs

**Intercollegiate sports:**

Men's basketball, baseball; women's basketball (NJCAA 2007 National Champions), volleyball

**Student activities:**

Concert choir, chamber singers, concert band, jazz band, theater, student newspaper, Phi Theta Kappa honor society, student government, intramural sports, academic clubs, Christian Fellowship, Muslim Association, Multicultural Club

**Housing:**

The college has no on-campus student housing, but rental units are within walking distance.

**To arrange a campus visit:**  
(763) 433-1100**Admissions: (763) 433-1450**  
TTY: (763) 433-1450**11200 Mississippi Blvd.**  
**Coon Rapids, MN 55433****Anoka-Ramsey Community College Highlights**

- Explore more. Watch the video at [www.anokaramsey.edu/prospective](http://www.anokaramsey.edu/prospective).
- Discover the college's unique campuses on the Rum River in Cambridge – featuring an exciting new facility – and on the Mississippi River in Coon Rapids. Call (763) 433-1100 to schedule an appointment or visit [www.anokaramsey.edu](http://www.anokaramsey.edu) and click on the "Ask Us" icon.
- Among the most affordable tuition and fees in Minnesota. Includes free tutoring, personal attention, small class sizes and dedicated faculty. Ask about scholarships and financial aid packages.
- Distinctive two-year programs may place you in a career or offer transfer to a four-year institution. Programs include art, biomedical technology, business, environmental science, geographic information systems, music, nursing and pre-engineering.

- Bachelor's and master's degree options from Metropolitan State University and St. Cloud State University are offered on the Anoka-Ramsey Community College campuses.
- Online courses, featuring an online associate degree in business.
- Courses offered in many locations including Circle Pines, Columbia Heights, Elk River, Fridley, Monticello and North Branch.
- Diverse student populations and first-generation college students served through TRIO and Aspire programs, and scholarship programs such as the National Science Foundation Scholarships for computer science, engineering and math.
- Student life offerings include theater, concert and jazz band, choir, intramural and intercollegiate sports, and more than 20 student clubs.





cost-saving tip

I might be able to take college-level courses while I'm still in high school.

In PSEO (Post-Secondary Enrollment Options), you get high school AND college credit for college-level courses. I can take these courses on a campus near home or maybe even at my high school. As long as I earn high school credit at the same time, there's no cost to me. So I won't have to pay to repeat these courses when I get to college.

## ANOKA TECHNICAL COLLEGE

[www.anokatech.edu](http://www.anokatech.edu)



**City/population:**  
Anoka/17,899

**Tuition and fees (2007-2008):** \$4,586

**FAFSA code:** 007350

### Enrollment:

Total number students served	3,247
Full-year-equivalent enrollment	1,601
Percent male	46.7%
Percent female	53.3%
Percent students of color	14.0%

### Degrees offered:

Associate in Applied Science, diplomas, certificates

### Largest programs:

Practical nursing, construction electrician, medical assistant

### Unique programs:

Broadcast captioning, judicial reporting, occupational therapy assistant, golf course grounds management, health information technology, multimedia and gaming information technology

### Intercollegiate sports:

Students at Anoka Technical College are eligible to participate in intercollegiate sports at Anoka-Ramsey Community College.

### Student activities:

Student Senate, Vocational Industrial Clubs of America, TECOTA (occupational therapy assistant program students), Phi Theta Kappa honor society

### Housing:

Anoka Technical College has no on-campus student housing, but roommate and housing lists are available.

**To arrange a campus visit:**  
(763) 576-4850

**Admissions: (763) 576-4850**  
**TTY: 711-763-576-4850**

**1355 W. Highway 10**  
**Anoka, MN 55303**

### Anoka Technical College Highlights

Located just outside the Twin Cities on Highway 10, Anoka Technical College has educational options that provide career flexibility.

- Anoka Technical College is nationally accredited.
- Job placement rates are 100 percent for many programs.
- Anoka Technical College graduates earn an average of \$36,000 annually in their field of study.
- Anoka Technical College graduates have high licensing exam pass rates. The certification pass rate of the college's surgical technology graduates is in the top 10 percent of the nation.
- The college has transfer agreements with many four-year institutions, including Bemidji State University; Concordia College; Metropolitan State University; Minnesota State University, Mankato; Minnesota State University Moorhead; and St. Cloud State University.

- The college's progress toward measuring student learning outcomes contributed to accreditation by the Higher Learning Commission through 2014.
- All programs include hands-on, student-centered experiential learning.
- "How to" entrepreneur courses are available for those who want to start their own business.
- Free job placement assistance, financial aid for those who qualify, free tutoring, access to industry technologies, research and access to the Internet are available.
- Approximately \$50,000 in scholarships is awarded annually.
- The average technical class size is 24 and lab size is 14.

**CENTRAL LAKES COLLEGE**
[www.clcmn.edu](http://www.clcmn.edu)
**Tuition and fees (2007-2008):** \$4,357**FAFSA code:** 002339**Enrollment:**

Total number students served	3,953
Full-year-equivalent enrollment	2,347
Percent male	43.6%
Percent female	56.4%
Percent students of color	4.3%

**Degrees offered:**

Associate in Arts, Associate in Applied Science, Associate in Science, diplomas, certificates

**Largest programs:**

Liberal arts for transfer to a four-year college, nursing, heavy equipment operations and maintenance, criminal justice, computer technology

**Unique programs:**

Photo imaging technology, robotics and automated systems, criminalistics, Latin American studies, American Sign Language, inland underwater search and recovery

**City/population:**  
Brainerd/13,849  
Staples/3,150

**Intercollegiate sports:**

Men's football, basketball, baseball, golf; women's volleyball, basketball, softball, golf

**Student activities:**

Choir, band, theater, newspaper, Phi Theta Kappa honor society, student government, multicultural, international, SkillsUSA, intramurals, more than 20 academic clubs

**Housing:**

The college has no on-campus student housing, but rental units are within walking distance.

**To arrange a campus visit:**  
(218) 855-8037

**Admissions: (218) 855-8037**  
**TTY: (218) 855-8224**

**501 W. College Drive**  
**Brainerd, MN 56401**

**Central Lakes College Highlights**

- Faculty – Instructors are accessible and give personal assistance to students.
- Facilities – See for yourself – campus visits available. Clean and safe with high-speed Internet access, high-tech science labs, efficient library and computer commons.
- Financial aid – 70 percent of Central Lakes College students receive financial aid. More than \$10 million in grants, scholarships, loans and work-study funding is available for students.
- Jobs – 87% of graduates in 2005 found jobs related to their field of study.
- Location – A hub of outdoor recreation, easy to reach from anywhere in the state.
- Partners – Easy transfer to obtain bachelor's degrees from other colleges and universities such as Southwest Minnesota State University; Minnesota State University, Mankato; and Bemidji State University in nursing, law

enforcement, child development, natural resources, business management, natural sciences, technology management and accounting.

- Online – Many Web-based courses.
- Improvements – More than \$6 million in new construction, expansion of music space, labs, heavy equipment service center.
- Affordable – The Associate in Arts degree with Minnesota Transfer Curriculum credits provides an affordable way to complete the first two years of a bachelor's degree.
- Technology – Instructors understand technology and use it in 60 career programs, from digital audio recording to laser-based forensics.
- Certified – Nationally accredited programs and certifications underscore the academic rigor to match employment standards.

**CENTURY COLLEGE**
[www.century.edu](http://www.century.edu)
**Tuition and fees (2007-2008):** \$4,410**FAFSA code:** 010546**Enrollment:**

Total number students served	11,872
Full-year-equivalent enrollment	5,980
Percent male	41.6%
Percent female	58.4%
Percent students of color	21.3%

**Degrees offered:**

Associate in Arts, Associate in Applied Science, Associate in Science, diplomas, certificates

**Largest programs:**

Courses such as English and mathematics that transfer to a four-year college, English for Speakers of Other Languages, registered nursing, emergency medical services and paramedics, computer science/technology

**Unique programs:**

Orthotics/prosthetics, women and gender studies, pre-engineering, visual communications

**City/population:**  
White Bear Lake/  
24,927

technologies, kitchen and bath design, sports facilities management, para-educator

**Intercollegiate sports:**

Men's and women's golf, soccer

**Student activities:**

Debate team, math team, Phi Theta Kappa honor society, chamber orchestra, concert band, choir, Asian Student Association, Creative Arts Alliance, drama club, Q and S Club, Student Senate, Wood Duck Celebration, intramural sports

**Housing:**

The college has no on-campus housing, but rental units are within walking distance.

**To arrange a campus visit:**  
(651) 773-1700

**Admissions: (651) 773-1700**  
**TTY: (651) 773-1715**

**3300 Century Ave. N.**  
**White Bear Lake, MN 55110**

**Century College Highlights**

Century College is proud of its beautiful new Kopp Technology Center, which features cutting-edge convergence technology (data, video and voice). The center is the home of "Century: CSI," which includes programs in computer forensics, investigative sciences, forensic photography, forensic science and biology, interviews and interrogation, hazardous materials, homeland defense and crime mapping.

Century's new science and library building is under construction and will open in fall 2008.

As both a community college and a technical college, Century also offers:

- A GPS Life Plan program of academic advising that allows every student to chart his or her path to a future career.
- Award-winning faculty members, including a winner of the Minnesota State Colleges and Universities Excellence in Teaching Award 2007.

- Excellent programs in areas such as emergency medical services, law enforcement, information and telecommunications technology, interior design, horticulture, and dental hygiene and assisting.
- A Phi Theta Kappa honor society that has been named "most distinguished chapter" in its four-state region; also, award-winning debate and math teams.
- Student clubs, men's and women's golf and soccer teams, intramural activities, new fitness center, and music and theater programs.
- Active learning opportunities, including a renowned service learning program.
- The Wood Duck Trail for walking and running behind West Campus, meandering through a wooded area, past a pond and athletic fields.
- A Multicultural Center, where international students from more than 45 countries meet to plan activities, socialize and study.



## DAKOTA COUNTY TECHNICAL COLLEGE



[www.dctc.edu](http://www.dctc.edu)

**City/population:**  
Rosemount/19,418

**Tuition and fees (2007-2008):** \$4,749

**FAFSA code:** 010402

### Enrollment:

Total number students served	5,246
Full-year-equivalent enrollment	2,255
Percent male	55.7%
Percent female	44.3%
Percent students of color	12.3%

### Degrees offered:

Associate in Science, Associate in Applied Science, diplomas, certificates

### Largest programs:

Interior design, practical nursing, dental assistant, accounting, automotive technician

### Unique programs:

Nanoscience technology, exercise and sport science, wood finishing, railroad conductor training, industrial distribution

### Intercollegiate sports:

Men's soccer, baseball; women's soccer, softball

### Student activities:

More than 19 organizations, clubs and activities, including multicultural club, chess club, horticulture club, marketing club, automotive club and student government

### Housing:

The college has no on-campus housing but maintains a housing resource list that includes area apartments, apartment locator firms and community housing projects.

**To arrange a campus visit:**  
(651) 423-8302

**Admissions: (651) 423-8302**  
**TTY: (651) 423-8621**

**1300 145th St. E.**  
**Rosemount, MN 55068**

### Dakota County Technical College Highlights

- Consistently places 94 percent of its graduates in employment related to their field of study.
- Small class sizes with faculty and staff readily available to advise and assist students.
- Classes offered in more than 50 program areas at times convenient to students, including more than 80 online classes.
- Academic support, including career services, academic counseling, tutoring, disabilities services, writing center, TRIO and more.
- Numerous opportunities for community engagement and participation in student organizations and activities.
- General education courses transferable to various four-year colleges and universities.
- Recent renovation provided new and improved library, student lounge area, classrooms, academic support offices, expanded computer labs, wireless Internet access and more.
- Provides training and opportunities for business and industry in areas such as law enforcement and occupational Spanish.
- An Apple Valley location also allows students to earn a degree and make a seamless transfer to earn a bachelor's or a master's degree through a partnership with Inver Hills Community College and Saint Mary's University.

For more information, visit [www.mnscu.edu](http://www.mnscu.edu)



**FOND DU LAC TRIBAL & COMMUNITY COLLEGE**[www.fdlccc.edu](http://www.fdlccc.edu)**Tuition and fees (2007-2008):** \$4,365**FAFSA code:** 031291**Enrollment:**

Total number students served	2,684
Full-year-equivalent enrollment	1,190
Percent male	40.1%
Percent female	59.9%
Percent students of color	19.7%

**Degrees offered:**

Associate in Arts, Associate in Applied Science,  
Associate in Science, certificates

**Largest programs:**

Liberal arts and transfer programs, law  
enforcement, human services, business,  
environmental science

**Unique programs:**

Computer forensics and e-crime, geographic  
information systems and visualization, American  
Indian studies, law enforcement skills,  
environmental science, clean energy technology

**City/population:**  
Cloquet/11,601

**Intercollegiate sports:**

Men's football, basketball; women's softball,  
volleyball, basketball

**Student activities:**

Approximately 12 student organizations  
and activities, including intramural sports,  
Law Enforcement Club, Phi Theta Kappa honor  
society, American Indian Business Leaders,  
Student Senate, Anishinaabe Student Congress,  
Environmental and Outdoor Recreation Club,  
Human Services Club, PROP program (student  
support services), Residence Hall Council

**Housing:**

A spectacular campus residence hall features  
large apartment-style units with full kitchens  
and private bathrooms. Units are fully furnished  
and have high-speed Internet access, air  
conditioning and cable television.

**To arrange a campus visit:**  
(218) 879-0808

**Admissions: (218) 879-0808**  
**TTY: (218) 879-0805**

**2101 14th St.**  
**Cloquet, MN 55720**

**Fond du Lac Tribal & Community College**  
**Highlights**

Fond du Lac Tribal and Community College is the  
only combined tribal college and state community  
college in the United States. The beautiful campus  
setting and buildings are unlike any other college  
campus.

- Reputation for friendly service and a comfortable campus atmosphere.
- Currently constructing a \$12.5 million library expansion and a new cultural-recreation center with physical education space, plus law enforcement and nursing training areas.
- High success rate of law enforcement graduates passing the Minnesota Peace Officers Standards and Training Board exam in the past three years.
- Students learn from award-winning instructors and friendly staff.
- Super-fast wireless network on campus for laptop users.

- 2,000-acre Environmental Study Area is only five minutes from campus.
- Classes usually have 20 or fewer students.
- High-speed Internet access and individual e-mail accounts for all students.
- High-tech science labs and computer labs.
- Convenient daytime, evening, weekend and online courses.
- Emphasis on uniting cultures and creating individual and community awareness of each other.
- Unique transfer programs with four-year colleges ensure credits will transfer easily.
- Urban Outreach campus site is located in south Minneapolis; contact (612) 871-4209 for program information.
- New intercollegiate athletic programs for women and men beginning in 2007-2008.

**HENNEPIN TECHNICAL COLLEGE**[www.hennepintech.edu](http://www.hennepintech.edu)**Tuition and fees (2007-2008):** \$4,187**FAFSA code:** 010491**Enrollment:**

Total number students served	8,246
Full-year-equivalent enrollment	3,649
Percent male	56.1%
Percent female	43.9%
Percent students of color	23.0%

**Degrees offered:**

Associate in Science, Associate in Applied  
Science, diplomas, certificates

**Largest programs:**

Practical nursing; information technology;  
automotive mechanics; fire protection; heating,  
ventilating and air conditioning

**City/population:**  
Brooklyn Park/71,048  
Eden Prairie/60,955

**Unique programs:**

Audio production, automation robotics  
engineering technology, floral design, Ford  
ASSET (Automotive Student Services Educational  
Training), marine motor sports technology,  
plastics manufacturing technology, printing  
and prepress technology

**Student activities:**

Skills USA, Phi Theta Kappa honor society,  
Student Senate, Pangea Multicultural Club,  
*Images*

**Housing:**

The college has no on-campus housing.  
Many housing options are nearby.

**To arrange a campus visit:**  
(763) 488-2450

**Admissions: (763) 488-2500**  
**TTY: (763) 488-2571**

**9000 Brooklyn Blvd.**  
**Brooklyn Park, MN 55445**

**Hennepin Technical College Highlights**

- Two convenient area locations – Brooklyn Park and Eden Prairie, each located on a bus line.
- Offers certificates, diplomas and associate degrees.
- Many transferable and two-plus-two degree programs (two-year degree transfers to begin four-year degree).
- Offers more than 45 different technical programs.
- State-of-the-art labs provide students with hands-on training and experience that meet industry standards.

- Classes are taught during the day, evening and weekends.
- Partner college in the Minnesota Center for Engineering and Manufacturing Excellence.
- New Advanced Center for Emergency Services.
- Affordable tuition and more than \$155,000 in scholarships each year.
- 99.5 percent of graduates in 2005 found jobs related to their field of study.
- Industry-driven curriculum taught by faculty experts.

For more information, visit [www.mnscu.edu](http://www.mnscu.edu)



Emergency medical services students practice safe techniques for moving victims.

Some high schools offer Advanced Placement or International Baccalaureate classes. By taking these courses, I could get a head start on doing college-level work. If I'm successful, I might be able to skip introductory courses when I get to college.



Cost-saving tip



## INVER HILLS COMMUNITY COLLEGE



[www.inverhills.edu](http://www.inverhills.edu)

**City/population:**  
Inver Grove Heights/  
33,195

**Tuition and fees (2007-2008):** \$4,535

**FAFSA code:** 006935

### Enrollment:

Total number students served	7,644
Full-year-equivalent enrollment	3,300
Percent male	40.8%
Percent female	59.2%
Percent students of color	16.4%

### Degrees offered:

Associate in Arts, Associate in Fine Arts, Associate in Applied Science, Associate in Science, diplomas, certificates

### Largest programs:

Liberal arts transfer, nursing, paralegal, teacher education, business

### Unique programs:

Urban teacher education, Cisco network technology and security, adult accelerated degree option, interdisciplinary learning communities

### Intercollegiate sports:

Students at Inver Hills are eligible to participate in Dakota County Technical College's teams: men's soccer, wrestling, baseball; women's soccer, softball.

### Student activities:

Phi Theta Kappa honor society; choir; theater; Student Senate; intramural and club sports; recreation and fitness programs; student clubs based on academic, career, political and cultural interests

### Housing:

The Hills apartments, privately owned housing adjacent to campus, offer shared living spaces with private bedrooms.

**To arrange a campus visit:**  
(651) 450-8500

**Admissions:** (651) 450-8500  
TTY: (651) 450-8369

**2500 80th St. E.**  
**Inver Grove Heights, MN 55076**

### Inver Hills Community College Highlights

Conveniently located just 10 minutes south of downtown St. Paul and 10 minutes east of the Mall of America, Inver Hills offers a broad range of transfer, career preparation and job skills educational programs.

- A comprehensive offering of liberal arts and general education courses allows students to complete the first two years of most bachelor's degree programs.
- More than 20 two-year degree options prepare students for employment upon graduation or permit them to continue their education through transfer to a four-year institution.
- New or remodeled teaching and training labs for programs include computer science and networking, nursing, science, emergency medicine and fitness.
- An online liberal arts associate degree offers flexible education for busy students.
- Almost half of the more than 1,300 class sections offered each year are scheduled evenings, weekends and online.
- Comprehensive student services include career development, academic counseling, writing and math assistance, free tutoring and services for students with disabilities.
- Average class size of about 25 allows for personal attention.
- With distinctive architecture, separate buildings and a natural setting of hills and woodlands, Inver Hills is one of the most scenic college campuses in the Twin Cities.

**LAKE SUPERIOR COLLEGE**[www.lsc.edu](http://www.lsc.edu)**Tuition and fees (2007-2008):** \$4,151**FAFSA code:** 005757**Enrollment:**

Total number students served	8,698
Full-year-equivalent enrollment	3,396
Percent male	48.1%
Percent female	51.9%
Percent students of color	6.7%

**Degrees offered:**

Associate in Arts, Associate in Fine Arts, Associate in Applied Science, Associate in Science, diplomas, certificates

**Largest programs:**

Liberal arts associate degree; associate degree in nursing, practical nursing, administrative support, fire technology and administration

**Unique programs:**

Professional pilot, paralegal, hemodialysis patient care technician, sonography

**Student activities:**

Student Senate and more than 30 clubs and organizations, including art club, intercultural club, snowboarding/ski club, Fitness Center

**Housing:**

Lake Superior College has no on-campus housing but provides information to students seeking housing in the community.

**City/population:**  
Duluth/85,889

**To arrange a campus visit:**  
(218) 733-7601

**Admissions: (218) 733-7601**  
**TTY: (218) 722-6893**

**2101 Trinity Road**  
**Duluth, MN 55811**

**Lake Superior College Highlights**

Lake Superior College is situated on a wooded campus that overlooks Duluth's famous harbor. It features award-winning architecture, comfortable classrooms, up-to-date technical labs, and beautiful study and library facilities. The campus has a natural setting that includes an urban forest and a trout stream.

- Offers more than 90 technical majors, programs for transfer, continuing education and customized training for businesses.
- Operates one of the largest online instructional programs in the Minnesota State Colleges and Universities system, serving more than 750 full-year-equivalent students and offering more than 130 courses each semester.
- Offers semester abroad programs in Italy and Mexico.

- The college's Emergency Response Training Center provides world-class training for emergency response professionals, including firefighters and emergency medical technicians.
- Provides dental hygiene and physical therapy services to students and uninsured residents of the region through faculty-supervised student clinics.
- Honors Online program provides college courses to high school students via the Internet.
- The college plans to offer expanded programs for the aviation industry with the establishment of a center for advanced aviation in 2008.
- A new \$12.5 million academic and student services addition is scheduled to open in August 2007.
- An online liberal arts associate degree offers flexible education for busy students.

**MINNEAPOLIS COMMUNITY & TECHNICAL COLLEGE**[www.minneapolis.edu](http://www.minneapolis.edu)**Tuition and fees (2007-2008):** \$4,442**FAFSA code:** 002362**Enrollment:**

Total number students served	10,880
Full-year-equivalent enrollment	5,329
Percent male	44.9%
Percent female	55.1%
Percent students of color	43.1%

**Degrees offered:**

Associate in Arts, Associate in Fine Arts, Associate in Science, Associate in Applied Science, diplomas, certificates

**Largest programs:**

Liberal arts, nursing careers, business management, law enforcement, child development

**Unique programs:**

Urban teacher education, sound arts, screenwriting, machine tool technology, urban parks and recreation, community health worker,

culinary arts, associate degree in fine arts, biotechnology, computer forensics, electroneuro-diagnostic technologist, polysomnography, Western clinical herbalism

**Intercollegiate sports:**

Men Division III basketball (NJCAA), golf; women's basketball, golf

**Student activities:**

Student government, more than 30 special-interest clubs, 10 academic interest clubs, honor societies, theater productions, music ensembles, intercollegiate athletics, recreation activities

**Housing:**

The college has no on-campus student housing, but rental units are within walking distance. The college provides community resources to help locate housing.

**City/population:**  
Minneapolis/387,711

**To arrange a campus visit:**  
(612) 659-6282

**Admissions: (612) 659-6200**  
**TTY: (612) 659-6731**

**1501 Hennepin Ave.**  
**Minneapolis, MN 55403**

**Minneapolis Community & Technical College Highlights**

Come as you are to Minneapolis Community and Technical College. You will feel welcome the moment you set foot on the college's beautiful downtown campus overlooking Loring Park.

- Newly remodeled campus with a state-of-the-art library.
- Liberal arts and career programs; transfer curriculum.
- One of the most diverse student bodies in the state.
- Small class sizes.
- A variety of support services, including tutoring, academic counseling and career advising.
- Multicultural Student Services program, Disability Services office, Bridge to Success and Student Connect Center to support success for all students.
- Power of You program provides residents graduating from Minneapolis or St. Paul public high schools the opportunity to attend Minneapolis Community and Technical College tuition free. The program supports as many students as possible based on student need.
- More than \$100,000 in scholarships awarded to students each year by the college foundation.
- Informational Get Started sessions at 5 p.m. Mondays and noon Thursdays in the Student Services Center.
- Services offered at two neighborhood locations in north and south Minneapolis.
- The college has a formal relationship with the FAA to train students for air traffic control and aviation careers. Graduates of the program who meet specified high academic standards and other FAA criteria are eligible to be hired and trained by the FAA and placed in air traffic control facilities across the nation.



## Services for students with disabilities

The state colleges and universities all have accessible buildings for students with disabilities. And they provide accommodations to help students who have documented physical and learning disabilities – just ask the disability coordinator at the college or university and learn more at: [www.mnscu.edu/students/disabilities.html](http://www.mnscu.edu/students/disabilities.html).



### MINNESOTA STATE COLLEGE- SOUTHEAST TECHNICAL



[www.southeastmn.edu](http://www.southeastmn.edu)

**City/population:**  
Red Wing/16,358  
Winona/27,295

**Tuition and fees (2007-2008):** \$4,502

**FAFSA code:** 002393

#### Enrollment:

Total number students served	2,629
Full-year-equivalent enrollment	1,578
Percent male	40.4%
Percent female	59.6%
Percent students of color	7.5%

#### Degrees offered:

Associate in Applied Science, Associate in Science, diplomas, certificates

#### Largest programs:

Nursing, accounting, administrative support, cosmetology, musical string instrument repair

#### Unique programs:

Musical string instrument repair, band instrument repair, aviation maintenance technology, massage therapy, mobile electronics installation

#### Student activities:

Business Professionals of America, Student Senate, Cultural Diversity, SkillsUSA, Distributive Education Clubs of America, Student Music Association

#### Housing:

The college has no on-campus housing, but numerous rental units are available. Privately owned dorm-style housing is available close to the campuses.

**To arrange a campus visit:**  
1-877-853-8324

**Admissions: 1-877-853-8324**  
TTY: (507) 453-2785

**1250 Homer Road**  
**Winona, MN 55987**

#### Minnesota State College – Southeast Technical Highlights

- More than 80 diverse programs in six major career fields: business and office, health and human services, sales and management, musical instrument repair, technical, and trade and industrial.
- Three sites – Red Wing, Winona and Winona Airport – all along the majestic bluffs of the Mississippi River Valley.
- Welcoming college environment with small classes and instructors who know you by name.
- Through the Minnesota Transfer Curriculum, students can transfer approved general education courses to other Minnesota State College and Universities.
- The diverse college population provides opportunities for students, faculty and staff to enhance knowledge about intercultural differences in communications and learning style.
- Students enjoy hands-on learning in clinical settings and labs.
- 94 percent of graduates in 2005 found jobs related to their field of study.
- A two-year registered nurse associate degree program is offered in Red Wing and Winona.
- The automotive technology program is certified by the National Automotive Technicians Education Foundation.
- Trade and industrial majors include automotive; carpentry; machine tool and die; truck driving; and heating, ventilating, air conditioning and refrigeration.
- Technical majors include drafting, electronics, computer programming and networking with Cisco and Microsoft certification.
- The college is accredited as a distance learning institution by the Higher Learning Commission, offering online classes, certificates, diplomas and degrees.

**MINNESOTA STATE COMMUNITY & TECHNICAL COLLEGE**
[www.minnesota.edu](http://www.minnesota.edu)
**Tuition and fees (2007-2008):** \$4,629**FAFSA code:** 005541**Enrollment:**

Total number students served	7,624
Full-year-equivalent enrollment	4,619
Percent male	39.6%
Percent female	60.4%
Percent students of color	7.2%

**Degrees offered:**

Associate in Arts, Associate in Fine Arts, Associate in Applied Science, Associate in Science, diplomas, certificates

**Largest programs:**

Liberal arts transfer, business, construction electricity, nursing

**Unique programs:**

Nanoscience technician, Case IH and Deere diesel technology, health information technology, Web development, Associate in Arts honors program, pharmacy technology, business office systems specialist, correctional officer

**City/population:**

Detroit Lakes/8,004 Moorhead/34,244  
Fergus Falls/13,903 Wadena/4,248

**Intercollegiate sports:**

Men's Division III football (NJCAA), golf, basketball, baseball; women's volleyball, golf, basketball, softball

**Student activities:**

Most student organizations are associated with professional and career choices. Others include student government, student ambassadors, drama, music, intramural athletics and *Spartan* student newspaper.

**Housing:**

The Fergus Falls campus has apartment-style campus housing. Detroit Lakes, Moorhead and Wadena campuses have community rental units near campus but no on-campus housing. Moorhead campus students may live in residence halls at Minnesota State University Moorhead.

**To arrange a campus visit:**  
1-888-MY-MSCTC (696-7282)

**Admissions: 1-888-696-7282**  
TTY: 1-800-627-3529

**1414 College Way**  
Fergus Falls, MN 56537-1000
**Minnesota State Community & Technical College Highlights**

- Minnesota State Community and Technical College campuses are located in Detroit Lakes, Fergus Falls, Moorhead and Wadena.
- The college offers more than 100 one-year and two-year career programs, plus online education courses and programs.
- The college offers the Associate in Arts degree and Associate in Fine Arts degree, providing easy transfer toward a degree at a four-year institution of your choice.

- All campuses provide career programs in health care services, trade and technology program areas.
- New and remodeled facilities provide smart classrooms, art and music studios, state-of-the-art labs and enhanced common areas.
- All campuses are wireless, allowing online accessibility for laptop computer users.
- The college is accredited by the Higher Learning Commission of the North Central Association of Colleges and Schools.

For more information, visit [www.mnscu.edu](http://www.mnscu.edu)

**MINNESOTA WEST COMMUNITY & TECHNICAL COLLEGE**
[www.mnwest.edu](http://www.mnwest.edu)
**Tuition and fees (2007-2008):** \$4,692**FAFSA code:** 005263**Enrollment:**

Total number students served	4,414
Full-year-equivalent enrollment	2,067
Percent male	46.4%
Percent female	53.6%
Percent students of color	7.4%

**Degrees offered:**

Associate in Arts, Associate in Science, Associate in Applied Science, diplomas, certificates

**Largest programs:**

Liberal arts transfer, collision repair, electrician, nursing, law enforcement

**Unique programs:**

Biotechnology laboratory technician, renewable energy technology, power sports technology, wind energy technology

**City/population:**

Canby/1,838 Pipestone/4,356  
Granite Falls/3,088 Worthington/  
Jackson/3,480 11,341

**Intercollegiate sports:**

Division III men's basketball (NJCAA), baseball, football, golf, wrestling; women's basketball, volleyball, softball, golf

**Student activities:**

Student government, Business Professionals of America, music, theater, Phi Theta Kappa honor society, SkillsUSA, intramural sports, Collegiate Optimist Club, Law Enforcement Club, club for nontraditional students

**Housing:**

Student housing is available at the Canby and Granite Falls campuses, and private apartment arrangements are available at all campus locations. The college provides assistance in locating rental housing in the communities.

**To arrange a campus visit:**  
1-800-658-2330 ext. 6811

**Admissions: (507) 825-6800**  
TTY: 1-800-627-3529

**1314 N. Hiawatha Ave.**  
Pipestone, MN 56164
**Minnesota West Community & Technical College Highlights**

- Five southwest Minnesota campus locations: Canby, Granite Falls, Jackson, Pipestone and Worthington. Learning sites are available in Fairmont, Luverne and Marshall.
- More than 60 majors in technical and liberal arts areas. Minnesota West Community and Technical College provides the Minnesota Transfer Curriculum, designed to meet the first two years' general education requirement at any Minnesota state college or university and many other four-year institutions.
- The Center for Digital Education, in conjunction with the American Association of Community Colleges, named Minnesota West as the fifth-leading small college nationally in using information technology to deliver services to students, faculty and staff.

- New majors in radiologic technology, surgical technology and liberal arts will be offered from the college's new Luverne Educational Center for Health Careers.
- Accredited by the Higher Learning Commission of the North Central Association of Colleges and Schools.
- Offers majors designed to meet emerging industry needs in renewable energy, biofuel and wind energy technology.
- Provides wireless computer technology and uses wireless Internet laptop computers in many majors.
- Offers online degrees, diplomas and certificates accredited by the Higher Learning Commission.



### Awesome view!

Minnesota West wind energy technology student Kevin Frosan took this photo showing fellow student Jacob Knutson on top of the 250-foot-high wind turbine tower where they practice what they're learning. The Minnesota State Colleges and Universities have several different renewable and alternative energy programs.

*"It is a fast-growing field where the pay is good and the job security is only getting better."* – Kevin Frosan

*"It is fun! It is an entirely different feeling working that high in the air. The view is just amazing."* – Jacob Knutson

## NORMANDALE COMMUNITY COLLEGE



[www.normandale.edu](http://www.normandale.edu)

**City/population:**  
Bloomington/84,347

**Tuition and fees (2007-2008):** \$4,512

**FAFSA code:** 007954

### Enrollment:

Total number students served	12,090
Full-year-equivalent enrollment	6,008
Percent male	41.3%
Percent female	58.7%
Percent students of color	22.1%

### Degrees offered:

Associate in Arts, Associate in Fine Arts, Associate in Applied Science, Associate in Science, certificates

### Largest programs:

Liberal arts transfer, business marketing and management, bioscience and engineering, nursing, teacher education

### Unique programs:

Nanotechnology; criminal justice; teacher education collaboration with Minnesota State University, Mankato; engineering foundations;

hospitality management; dietetic technology; nationally accredited music program

### Student activities:

Student government, Normandale Programming Board, *The Lion's Roar* student newspaper, Phi Theta Kappa honor society, service learning, recreational sports, outdoor recreation, leadership development, concert band, concert choir, theater, student and professional organizations, special interest and culture-based student clubs and more

### Housing:

Normandale does not have campus housing. A list of off-campus rental housing is available at the Call Center in the foyer of the College Services building. Some rental units are within walking distance of the campus.

**To arrange a campus visit:**  
(952) 487-8201

**Admissions: (952) 487-8201**  
**TTY: (952) 487-7032**

**9700 France Ave. S.**  
**Bloomington, MN 55431-4399**

### Normandale Community College Highlights

Normandale Community College is located at 98th Street and France Avenue South in Bloomington on a wooded 90-acre site just 1.5 miles south of I-494.

- More than 12,000 students from diverse backgrounds attend classes at the college each year, making it one of Minnesota's largest community colleges.
- The college prepares students for full participation in diverse communities, creates pathways to other college programs and builds community connections. Normandale is committed to quality, affordability, student access and success.
- Normandale offers an accredited music program, one of the few among two-year colleges in Minnesota and the nation.
- Joint programs with Fairview-University Hospital and Clinic; Minnesota State University, Mankato; Metropolitan State University; and the University of Minnesota provide students additional opportunities to reach their career goals.
- Support services are provided for second language and developmental education students as well as students with disabilities.
- Academic programs in more than 60 areas are offered, including programs for transfer to four-year colleges, specialized career programs leading to direct employment and noncredit continuing education and customized training programs. Flexible schedules provide a variety of enrollment options.



## NORTH HENNEPIN COMMUNITY COLLEGE

www.nhcc.edu



**City/population:**  
Brooklyn Park/71,048

**Tuition and fees (2007-2008):** \$4,421

**FAFSA code:** 002370

**Enrollment:**

Total number students served	9,194
Full-year-equivalent enrollment	4,165
Percent male	39.4%
Percent female	60.6%
Percent students of color	26.5%

**Degrees offered:**

Associate in Arts, Associate in Science, Associate in Applied Science, Associate in Fine Arts, certificates, bachelor's degrees offered in partnership with four-year institutions

**Largest programs:**

Liberal arts and general studies, nursing, business, law enforcement and criminal justice, paralegal

**Unique programs:**

Individualized studies, Every-Other Weekend College, Business ASAP (Associate in Science Accelerated Program), evening and weekend

nursing, off-campus degree opportunities at Buffalo High School, building inspection technology, pre-engineering, noninvasive cardiology technology, chemical technology, medical laboratory technology, histotechnology, e-commerce

**Student activities:**

Social, recreational, cultural and educational opportunities include student government, student clubs and professional organizations, honor societies, recreational sports, literary arts magazine, art, music, theater

**Housing:**

The college has no on-campus student housing, but rental units are within walking distance of the campus or via Metro Transit bus lines.

**To arrange a campus visit:**  
(763) 424-0702

**Admissions: (763) 424-0702**  
TTY: (763) 424-0949

**7411 85th Ave. N.**  
**Brooklyn Park, MN 55445**

**North Hennepin Community College Highlights**

Picture yourself surrounded by more than 9,000 students on a beautiful, bustling, 80-acre college campus conveniently located in a fast-growing metropolitan area of the Twin Cities.

Picture your campus alive with activity and rich with diversity. North Hennepin Community College has small class sizes and faculty and staff who are dedicated to helping you reach your educational and career goals.

Picture your future with a wide variety of associate degree and certificate programs from which to choose. Here, you can complete the first two years of a four-year degree and transfer your credits or earn an associate degree and immediately enter the workforce. Partnerships with four-year institutions make it possible for students to earn bachelor's degrees in business, science and health careers on campus so they don't have to start all over again in a new place after two years.

- Attend an information session and take a tour of campus at 6 p.m. any Tuesday in the

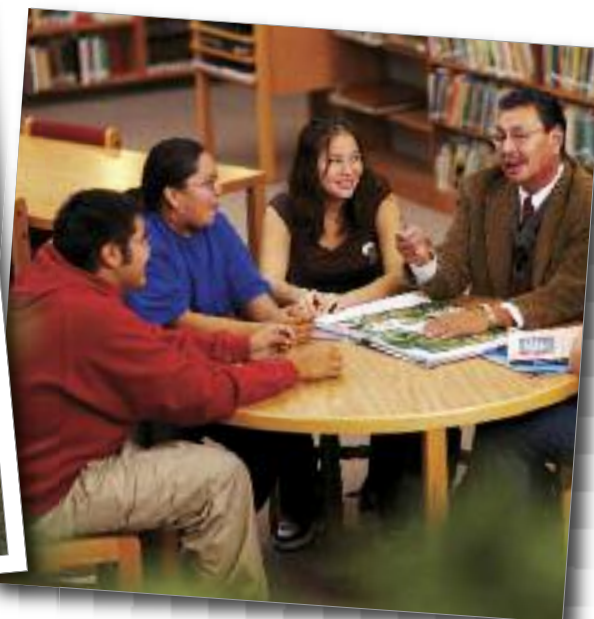
Educational Services Building. Student ambassadors are available for individual appointments by calling (763) 424-0702.

- Traditional, accelerated, Web-enhanced, online and off-campus classes are offered in the morning, afternoon, evening and on weekends to fit any busy schedule.
- Student success programs offer counseling, advising, career planning, tutoring, disability access services, math and writing resources, English for speakers of other languages, TRIO and Student Support Services, First Year Experience activities and service learning.
- More than \$4.75 million is awarded annually in scholarships and financial aid grants.
- New and remodeled facilities provide smart classrooms, art and music studios, state-of-the-art labs and enhanced common areas.
- Check out [www.nhcc.edu](http://www.nhcc.edu) for complete program information, application procedures, scholarships, important dates and fun events.

tip



I figured out that if I work hard in high school and take math every year, I'll be less likely to have to take remedial classes in college. That will save me time and money.



# Northeast Higher Education District

## HIBBING COMMUNITY COLLEGE

www.hibbing.edu

### Mailing address:

1515 E. 25th St.  
Hibbing, MN 55746



### City/population:

Hibbing/16,582

### Phone numbers:

Admissions: (218) 262-7207  
TTY: (218) 262-7292

### To arrange a campus visit:

(218) 262-7294

**Tuition and fees (2007-2008):** \$4,344

**FAFSA code:** 002355

### Enrollment:

Total number students served	1,934
Full-year equivalent enrollment	1,176
Percent male	48.7%
Percent female	51.3%
Percent students of color	7.1%

### Largest programs:

Law enforcement, nursing, electrical maintenance, liberal arts

### Unique programs:

Helicopter pilot training, online medical lab tech, engineering technology, pharmacy technician

### Hibbing Highlights

Students can choose from exciting new programs beginning in fall 2007, including helicopter pilot training, pharmacy tech, engineering tech, health care supervisor, industrial tech-mining emphasis, and network security and forensics.

- Offers academic programs that transfer to a four-year institution and technical programs to start a career.
- Club soccer and hockey, student government, alternate spring break opportunities, on-campus clubs, choir, on-campus housing.

## ITASCA COMMUNITY COLLEGE

www.itascacc.edu

### Mailing address:

1851 E. Highway 169  
Grand Rapids, MN 55744



### City/population:

Grand Rapids/8,543

### Phone numbers:

Admissions: (218) 327-4460  
TTY: (218) 327-4167

### To arrange a campus visit:

(218) 327-4464

**Tuition and fees (2007-2008):** \$4,337

**FAFSA code:** 002356

### Enrollment:

Total number students served	1,530
Full-year equivalent enrollment	998
Percent male	49.7%
Percent female	50.3%
Percent students of color	7.1%

### Largest programs:

Liberal arts, psychology, engineering, practical nursing, natural resources

### Unique programs:

Geography/GIS, American Indian studies, pulp and paper, early childhood education

### Itasca Highlights

The scenic Itasca Community College campus, just 180 miles north of Minneapolis and St. Paul, is surrounded by majestic pines in an area with more than 1,000 lakes.

- 90 percent of Itasca students who apply for aid receive it.
- Start your bachelor's degree here.
- High-tech Engineering Center.
- Men's football, basketball, wrestling, baseball; women's volleyball, basketball, softball.
- Student clubs, coed intramurals, two on-campus residence halls.

## MESABI RANGE COMMUNITY & TECHNICAL COLLEGE

www.mesabirange.edu

### Mailing address:

1001 Chestnut St. W.  
Virginia, MN 55792



### City/population:

Eveleth/3,685, Virginia/8,895

### Phone numbers:

Admissions: (218) 749-0314  
TTY: (218) 749-7783

### To arrange a campus visit:

(218) 749-0314

**Tuition and fees (2007-2008):** \$4,344

**FAFSA code:** 004009

### Enrollment:

Total number students served	2,025
Full-year equivalent enrollment	1,069
Percent male	48.0%
Percent female	52.0%
Percent students of color	7.0%

### Largest programs:

Transfer programs, carpentry, industrial mechanical technology, nursing

### Unique programs:

Industrial technology, human services, graphic design and print communications, masonry

### Mesabi Range Highlights

Located in the heart of beautiful northeastern Minnesota, Mesabi Range has small class sizes that offer personal attention and interaction with instructors and other students.

- Complete the first two years of a four-year degree.
- The college foundation awards \$105,000 in scholarships annually.
- Men's football, basketball, baseball; women's volleyball, basketball, softball.
- Club hockey, intramural sports.
- Apartment-style housing on the Virginia campus.

## RAINY RIVER COMMUNITY COLLEGE

www.rrcc.mnscu.edu

### Mailing address:

1501 Highway 71  
Int'l Falls, MN 56649



### City/population:

International Falls/6,397

### Phone numbers:

Admissions: (218) 285-2207  
TTY: (218) 285-2261

### To arrange a campus visit:

(218) 285-2213

**Tuition and fees (2007-2008):** \$4,380

**FAFSA code:** 006775

### Enrollment:

Total number students served	584
Full-year equivalent enrollment	320
Percent male	46.2%
Percent female	53.8%
Percent students of color	24.3%

### Largest programs:

Liberal arts, nursing, business office specialist, fitness specialist

### Unique programs:

Indigenous studies

### Rainy River Highlights

Rainy River Community College is located in northern Minnesota right along the Canadian border.

- Small class sizes.
- Easy access to instructors.
- Popular nursing program.
- Men's football, basketball; women's volleyball, basketball, club hockey, softball.
- Field trips to Voyageurs National Park and Rainy Lake are available in some classes.
- Apartment-style campus housing.

## VERMILION COMMUNITY COLLEGE

www.vcc.edu

### Mailing address:

1900 E. Camp St.  
Ely, MN 55731



### City/population:

Ely/3,558

### Phone numbers:

Admissions: (218) 235-2191  
TTY: (218) 235-2120

### To arrange a campus visit:

(218) 235-2191

**Tuition and fees (2007-2008):** \$4,374

**FAFSA code:** 002350

### Enrollment:

Total number students served	947
Full-year equivalent enrollment	625
Percent male	65.5%
Percent female	34.5%
Percent students of color	12.8%

### Largest programs:

Wildland/wildlife law enforcement, natural resources technology

### Unique programs:

Taxidermy, professional forest harvester, watershed science

### Vermilion Highlights

Vermilion has apartment-style housing and is located on the edge of the Boundary Waters Canoe Area Wilderness.

- Specializes in liberal arts and environmental programs leading to careers in forestry, wilderness and wildlife management, and parks and recreation.
- Men's football, basketball, baseball; women's volleyball, basketball, softball.
- A variety of outdoor clubs and activities, including Wingshooters Club and winter camping.

**NORTHLAND COMMUNITY & TECHNICAL COLLEGE**[www.northlandcollege.edu](http://www.northlandcollege.edu)**Tuition and fees (2007-2008):** \$4,799**FAFSA code:** 002385**Enrollment:**

Total number students served	5,011
Full-year-equivalent enrollment	2,744
Percent male	44.2%
Percent female	55.8%
Percent students of color	8.4%

**Degrees offered:**

Associate in Arts, Associate in Applied Science, Associate in Science, diplomas, certificates

**Largest programs:**

Architectural technology, aviation maintenance technology, computer service and networking, construction electricity, fire technology, liberal arts, nursing, sales, marketing and management

**Unique programs:**

Aviation maintenance technology, cardiovascular technology - invasive, computer modeling and animation, farm operations and management, fire technology, surgical

**City/population:**

East Grand Forks/7,816  
Thief River Falls/8,476

technology, pharmacy technology, physical therapist assistant, robotics technology, respiratory therapy

**Intercollegiate sports:**

Division III athletics (NJCAA) including men's football, basketball, baseball; women's volleyball, basketball, softball

**Student activities:**

Choir, community band, jazz band, Phi Theta Kappa honor society, multicultural club, intramural athletics, student government, student newspaper, student and professional organizations

**Housing:**

Numerous rental units are available in East Grand Forks and Thief River Falls, and many are within walking distance. Both campuses maintain lists of housing.

**To arrange a campus visit:**  
(218) 681-0854

**Admissions: (218) 681-0854**  
**TTY: (218) 681-0990**

**1101 Highway 1 E.**  
**Thief River Falls, MN 56701**

**Northland Community & Technical College Highlights**

- Northland has campuses in East Grand Forks and Thief River Falls.
- More than 100 different career programs and degree options are available.
- Northland has one of the largest liberal arts programs of two-year colleges in northern Minnesota.
- Flexible scheduling gives students a variety of enrollment options. Students are able to attend full time or part time, and Northland offers hundreds of online and evening classes each year.

- The average class size at Northland is 22 students.
- Numerous student resources are available, including career counselors and advisors, career placement, libraries, learning services and a child care center at the Thief River Falls campus.
- Students on both campuses are invited to participate in Pioneer intercollegiate athletics, intramurals and student life activities.
- Northland is the home of Pioneer 90.1, a 24-kilowatt FM radio station programmed by Northland students and community volunteers.

For more information, visit [www.mnscu.edu](http://www.mnscu.edu)

**NORTHWEST TECHNICAL COLLEGE**[www.ntcmn.edu](http://www.ntcmn.edu)**Tuition and fees (2007-2008):** \$4,704**FAFSA code:** 005759**Enrollment:**

Total number students served	1,462
Full-year-equivalent enrollment	730
Percent male	28.5%
Percent female	71.5%
Percent students of color	16.7%

**Degrees offered:**

Associate in Applied Science, Associate in Science, diplomas, certificates

**Largest programs:**

Practical nursing; residential plumbing and heating, ventilating and air conditioning; general business; construction electricity; dental assisting

**Unique programs:**

High-performance engine machinist, industrial model making

**City/population:**  
Bemidji/13,059

**Student activities:**

Campus government, SkillsUSA, Phi Theta Kappa honor society

**Housing:**

The college is aligned with Bemidji State University, and students are eligible to contract with the university for residence hall housing and meal plans. Private housing lists are available from enrollment services.

**To arrange a campus visit:**  
(218) 333-6645

**Admissions: (218) 333-6647**  
**TTY: (218) 333-4307**

**905 Grant Ave S.E.**  
**Bemidji, MN 56601**

**Northwest Technical College Highlights**

- Location – Situated in the beautiful north woods of Minnesota, Northwest Technical College's mission is to integrate the value of work with educational experiences to develop resourceful lifelong learners.
- Aligned with Bemidji State University – Northwest Technical College and the nearby university have a unique relationship that extends some benefits of attending a four-year university, including housing, meal plans, the recreation and fitness center, health services and credit transfer options.
- Technology – Wireless Internet access and computer kiosks are available throughout the campus.

- Online education – Programs in accounting, administrative support, supervisory leadership, medical secretary technology and individual occupation preparation.
- Warm and welcoming – Students experience personal attention, small classes, accessible faculty, learning enrichment services and original artwork on campus.
- Campus visits – Campus visits are encouraged for students and their families. Visits may be scheduled by visiting the college's Web site, [www.ntcmn.edu](http://www.ntcmn.edu), or by calling (218) 333-6645.





cost-saving tip

I could start at a two-year college close to home and plan to transfer to a four-year college or university after two years. Since costs are less at a public two-year college, I could save some money during those first two years. And if I can live at home, I'll save even more. Maybe I'll use the money I save for grad school.

## PINE TECHNICAL COLLEGE

[www.pinetech.edu](http://www.pinetech.edu)

**Tuition and fees (2007-2008):** \$4,206

**FAFSA code:** 005535

### Enrollment:

Total number students served	963
Full-year-equivalent enrollment	410
Percent male	31.8%
Percent female	68.2%
Percent students of color	4.2%

### Degrees offered:

Associate in Applied Science, Associate in Science, diplomas, certificates

### Largest programs:

Practical nursing, gunsmithing, automotive

### Unique programs:

Gunsmithing, public welfare financial worker, management of information systems, mechanical engineering



**City/population:**  
Pine City/3,255

### Student activities:

Student government, student and professional organizations, intramural sports, academic organizations and clubs

### Housing:

The college has no on-campus student housing, but rental units are within walking distance. The college helps students find rental housing.

**To arrange a campus visit:**  
(320) 629-5100

**Admissions:** (320) 629-5100  
TTY: (320) 629-1030

**900 4th St. S.E.**  
**Pine City, MN 55063**

### Pine Technical College Highlights

Pine Technical College, located halfway between Duluth and the Twin Cities, is an ideal place for every type of student.

- A collaborative Associate in Arts degree with Mesabi Range Community and Technical College allows students to complete their first two years of a four-year degree on the Pine Technical College campus.
- With several Associate in Science degrees, students who want to begin a four-year degree and take advantage of lower tuition rates can focus on a major or profession-oriented area.
- The college's technical programs are designed to allow students a great opportunity to gain employment. Examples include automotive technology, administrative careers, accounting, computer and information sciences, nursing and human services.

- Pine Technical College is participating in two of the Minnesota State Colleges and Universities centers of excellence – the Center for Integrated Health Science Education and Practice, and the Consortium for Manufacturing and Applied Engineering.
- Pine Technical College is a national model in its use of telecommunications and other distance education tools.
- A vibrant student life environment provides an opportunity to meet classmates, join clubs and experience new activities.
- The college's location gives students the best of both worlds – outdoor experiences and proximity to Duluth and the Twin Cities.

**RIDGEWATER COLLEGE**[www.ridgewater.edu](http://www.ridgewater.edu)**Tuition and fees (2007-2008):** \$4,517**FAFSA code:** 005252**Enrollment:**

Total number students served	5,492
Full-year-equivalent enrollment	3,145
Percent male	44.3%
Percent female	55.7%
Percent students of color	5.2%

**Degrees offered:**

Associate in Arts, Associate in Applied Science, Associate in Science, diplomas, certificates

**Largest programs:**

Liberal arts, agriculture, business, nursing, health services

**Unique programs:**

Nondestructive testing, global positioning satellite/geographical information systems for agriculture, advanced collision services, activity director, calibration engineering technology, computer art and publishing, insurance claim representative, dairy management, audio technology

**City/population:**  
Hutchinson/13,817  
Willmar/18,709

**Intercollegiate sports:**

Men's baseball, basketball, football, wrestling, soccer; women's basketball, volleyball, softball, club soccer; co-ed golf. All NJCAA Division III except men's soccer, which is NJCAA Division I

**Student activities:**

Student government, college ambassadors, choir, theater, Phi Theta Kappa honor society, student newspaper, student and professional organizations, many program-related clubs

**Housing:**

Ridgewater College has no on-campus student housing, but affordable rental units are within walking distance of each campus. The college provides students the most recent listings available for rental housing.

**To arrange a campus visit:**  
(320) 222-5200

**Admissions: (320) 222-5200**  
**TTY: (800) 627-3529**

**2101 15th Ave. N.W. P.O. Box 1097**  
**Willmar, MN 56201**

**Ridgewater College Highlights**

Ridgewater College is a comprehensive community and technical college with campuses in Willmar and Hutchinson. With more than 100 programs of study to choose from, you'll find what's right for you at Ridgewater College. Whether you are interested in getting a start toward a bachelor's degree or learning the skills necessary to move right into the workforce, the college has a program for you.

- Liberal arts programs offer many options to individuals interested in completing the first two years of a bachelor's degree, including the Minnesota Transfer Curriculum, which transfers to any of the other Minnesota State Colleges and Universities.
- Dozens of career and technical programs use state-of-the-art technology to provide students the training they need to excel in their chosen industry.

- Student services such as financial aid, academic and personal counseling, tutoring and academic support centers help students achieve their goals.
- Ridgewater's experience with patient simulation in health care education has earned recognition as a partner in the Center for Integrated Health Science Education and Practice, one of the Minnesota State Colleges and Universities centers of excellence.
- Many student organizations and activities provide students with opportunities to be involved, meet new people and develop leadership skills.
- Lifetime job placement services help graduates land jobs in their chosen career fields.
- Cooperative agreements with universities for specified programs enable students to complete a bachelor's degree while remaining on Ridgewater's campuses or seamlessly transfer credits to a four-year college or university.

**RIVERLAND COMMUNITY COLLEGE**[www.riverland.edu](http://www.riverland.edu)**Tuition and fees (2007-2008):** \$4,598**FAFSA code:** 002335**Enrollment:**

Total number students served	4,591
Full-year-equivalent enrollment	2,311
Percent male	46.6%
Percent female	53.4%
Percent students of color	7.4%

**Degrees offered:**

Associate in Arts, Associate in Fine Arts, Associate in Science, Associate in Applied Science, diplomas, certificates

**Largest programs:**

Liberal arts and sciences, nursing, construction electrician, business and office technology, law enforcement

**Unique programs:**

Associate in Arts, business emphasis; Associate in Fine Arts degree: art, music, theater; pharmacy technology

**City/population:**  
Albert Lea/18,153  
Austin/23,761

**Intercollegiate sports:**

Men's golf, baseball, basketball; women's golf, volleyball, basketball, fastpitch softball

**Student activities:**

Student Senate, Student Ambassadors, Phi Theta Kappa honor society, music, theater, intramural sports, SkillsUSA, International Club, R.I.O.T. Christian Fellowship, Riverland Community Gay-Straight Alliance, Criminal Justice Society, Human Services Club, ACCENT literary magazine

**Housing:**

Riverland's student housing offers an opportunity for 84 students to live on the Austin campus.

**To arrange a campus visit:**  
(507) 433-0820

**Admissions: (507) 433-0820**  
**TTY: 1-800-627-3529**

**1900 8th Ave. N.W.**  
**Austin, MN 55912**

**Riverland Community College Highlights**

Riverland is a comprehensive community college inspiring learning for living through a personalized educational environment.

- Locations in Albert Lea, Austin and the Owatonna College and University Center make it easy to earn the first two years of a bachelor's degree or complete one of more than 50 career program options in accounting, business, business and office technology; construction; computer technology; health and service; management; manufacturing; and transportation.
- Support services are available to help students improve study skills, locate resources, address personal issues, make strong career decisions, pay for college or arrange the details of a smooth college transfer.

- Riverland is approved to offer degrees, diplomas and certificates via distance learning (online and interactive television). Distance learning provides a flexible opportunity for busy students.
- Big Day On Campus is a special day offered monthly during the school year for high school students to experience Riverland. Participants tour campus, hear about student life and meet faculty.
- The college recently opened a world-class health-science education simulation center for nurses, radiographers and lab technicians.
- Riverland is among a small group of community colleges in the Minnesota State Colleges and Universities system that offer an Associate in Fine Arts degree in three areas: art, music or theater.

**Tuition and fees (2007-2008):** \$4,656

**FAFSA code:** 002373

#### Enrollment:

Total number students served	7,791
Full-year-equivalent enrollment	4,388
Percent male	36.6%
Percent female	63.4%
Percent students of color	13.1%

#### Degrees offered:

Associate in Arts, Associate in Fine Arts, Associate in Applied Science, Associate in Science, diplomas, certificates

#### Largest programs:

Liberal arts, nursing, allied health, business administrative technology, business

#### Unique programs:

Dental hygiene, equine science, horticulture technology, surgical technology, veterinary technician

#### Intercollegiate sports:

Division III athletics (NJCAA); men's baseball, basketball, football, golf, wrestling; women's basketball, golf, soccer, softball, volleyball

#### Student activities:

Student life includes 17 clubs and organizations, fine arts opportunities in music and theater, and student ambassador and student government programs.

#### Housing:

An apartment complex on college property provides student housing.

#### Rochester Community & Technical College Highlights

Rochester Community and Technical College was founded in 1915 on a motion by Dr. Charles Mayo to the Rochester School Board. Rochester is Minnesota's oldest, and one of the nation's oldest, original community colleges.

- The college serves approximately 7,500 students in credit-based enrollment and 3,000 in noncredit courses.
- Rochester consistently lands near or at the top of several of the nation's "most livable cities" lists.
- Rochester is Minnesota's third-largest city and home to the world-renowned Mayo Clinic and IBM.
- The college offers more than 70 credit-based programs with more than 130 credential options in liberal arts, allied health, business, service and technical career pathways.

- Rochester ranks among the top four of the 32 Minnesota State Colleges and Universities for online credits taken in 2006-2007 academic year.
- Rochester Community and Technical College is part of University Center Rochester, which is the home of three institutions: the college, Winona State University-Rochester Center and the University of Minnesota Rochester. Often referred to as 3-2-1, the center is composed of three institutions, two public higher education systems (Minnesota State Colleges and Universities and the University of Minnesota) and one campus called University Center Rochester. This partnership offers certificate programs through doctorate degrees.



Agricultural business and production students learn to operate large equipment such as this "super sprayer" farm chemical applicator.





**ST. CLOUD TECHNICAL COLLEGE**[www.sctc.edu](http://www.sctc.edu)**Tuition and fees (2007-2008):** \$4,424**FAFSA code:** 005534**Enrollment:**

Total number students served	5,053
Full-year-equivalent enrollment	2,666
Percent male	51.6%
Percent female	48.4%
Percent students of color	5.1%

**Degrees offered:**

Associate in Applied Science, Associate in Science, diplomas, certificates

**Largest programs:**

Practical nursing, sales and management, architectural construction technology, electrical construction technology, carpentry

**Unique programs:**

Echocardiography, sonography, cardiovascular technology, water environment technology, land surveying and civil engineering

**City/population:**  
St. Cloud/64,232**Intercollegiate sports:**

Women's basketball, softball, volleyball; men's basketball, baseball

**Student activities:**

Student Senate, American Advertising Federation, Central Minnesota Printing Professionals, Central Minnesota Builders Association, American Drafting and Design Association, American Society of Certified Engineering Technicians, Business Professionals of America, Delta Epsilon Chi, American Dental Assistants Association, Phi Theta Kappa honor society, SkillsUSA Automotive, TRIO Club

**Housing:**

The college has no on-campus student housing, but numerous rentals are available within a two-mile radius of the campus. Students may live in the dorms at St. Cloud State University; a limited number of spots are available.

**To arrange a campus visit:**  
(320) 308-5089**Admissions: (320) 308-5089**  
**TTY: (320) 308-5988****1540 Northway Drive**  
**St. Cloud, MN 56303****St. Cloud Technical College Highlights**

- St. Cloud Technical College is located in one of the fastest-growing communities in Minnesota.
- The college offers certificates, diplomas and degrees that can be completed in two years or less in more than 100 career majors.
- Students learn in a hands-on environment and are prepared for the workplace upon graduation.
- St. Cloud Technical College graduates get jobs in their field of study. Job placement rates average 97 percent over the last five years.
- Students may obtain an Associate in Arts (liberal arts transfer degree) through a collaborative arrangement with Anoka-Ramsey Community College.
- Southwest Minnesota State University, in partnership with St. Cloud Technical College, offers bachelor's degrees in management and education at the college.
- Enjoy small classes and instructors who are eager to help you succeed.
- A child care facility is located on campus.
- The college provides a variety of supportive services, including tutoring, academic counseling and career advising.
- The college foundation awards more than 200 scholarships annually.
- Campus tours are available Friday mornings throughout the year. To schedule a tour, visit the college Web site at [www.sctc.edu/tours](http://www.sctc.edu/tours).

For more information, visit [www.mnscu.edu](http://www.mnscu.edu)**SAINT PAUL COLLEGE**[www.saintpaul.edu](http://www.saintpaul.edu)**Tuition and fees (2007-2008):** \$4,314**FAFSA code:** 005533**Enrollment:**

Total number students served	7,505
Full-year-equivalent enrollment	3,090
Percent male	47.4%
Percent female	52.6%
Percent students of color	43.5%

**Degrees offered:**

Associate in Arts, Associate in Applied Science, Associate in Science, diplomas, certificates

**Largest programs:**

Liberal arts and sciences, practical nursing, business and computer, American Sign Language studies, cosmetology, construction trades

**Unique programs:**

Entrepreneurship, American Sign Language interpreter and transliterator, watchmaking, geomatics (land surveying) and mapping

**City/population:**  
St. Paul/287,385

sciences, international trade, energy process technician, reflexology, polysomnographic technology, personal trainer, electronic nanotechnology

**Student activities:**

Student Senate, SkillsUSA, African Heritage Student Association, Hispanic American Student Association, Asian American Student Association, Phi Theta Kappa honor society, soccer, Student Ambassadors

**Housing:**

The college has no on-campus student housing, but rental units are within walking distance. The college helps students find rental housing.

**To arrange a campus visit:**  
(651) 846-1666**Admissions: (651) 846-1600**  
**TTY: (651) 846-1548****235 Marshall Ave.**  
**St. Paul, MN 55102****Saint Paul College Highlights**

Start here. Go anywhere. You can start where you are, and the college will help you get where you want to go. That might be completing one of 70 career-focused programs, starting a bachelor's degree or meeting continuing education needs.

- The college has a long and rich history of helping students succeed in high-demand careers since 1910.
- The liberal arts and sciences program offers transfer credits that allow students to take the first two years and then transfer to a four-year degree program.
- Faculty members have the necessary industry experience and academic credentials to teach students the critical skills and knowledge to be successful.
- Students have access to technology through wireless networks and computer labs, including e-mail and Internet access.
- Students experience career-focused technical and liberal arts courses, small classes, state-of-the-art technology, excellent job placement services, flexible schedules and a diverse student population.
- Employers rely on the college to fill their need for skilled and professional employees. The college's close link to business and labor ensures that programs give you what you need to be successful in today's competitive workplace.
- A new scholarship program called Power of You provides qualified students graduating from Minneapolis or St. Paul public schools the opportunity to attend Saint Paul College tuition-free.



## SOUTH CENTRAL COLLEGE

[www.southcentral.edu](http://www.southcentral.edu)



**Tuition and fees (2007-2008):** \$4,436

**FAFSA code:** 005537

### Enrollment:

Total number students served	4,824
Full-year-equivalent enrollment	2,238
Percent male	48.1%
Percent female	51.9%
Percent students of color	5.5%

### Degrees offered:

Associate in Arts, Associate in Applied Science, Associate in Science, diplomas, certificates

### Largest programs:

Nursing, marketing management, associate degrees in liberal arts and science

### Unique programs:

Agribusiness; civil technology; community social services; construction field supervision; graphics production; hotel, restaurant and institutional cooking; occupational safety management

### Student activities:

Student Senate, student newspaper, Phi Theta Kappa honor society, Business Professionals of America, Delta Epsilon Chi, National Student Nurses organization, Post-Secondary Agriculture Students organization, SkillsUSA, speech and debate team, soccer club

### Housing:

Off-campus housing is available in the area.

### City/population:

Faribault/22,605  
Mankato area/47,608

**To arrange a campus visit:**  
(507) 389-7451

**Admissions: (507) 389-7451**  
**TTY: (507) 389-7200**

**1920 Lee Blvd.**  
**North Mankato, MN 56003**

### South Central College Highlights

- South Central College is Minnesota's newest community and technical college. The college has a history of academic excellence since 1946 as a technical college. The college now provides an associate degree in liberal arts and sciences that allows students to take the first two years of a bachelor's degree in a small, caring environment. The college has campuses in two great college communities – Faribault and North Mankato.
- South Central offers a full-tuition Presidential Scholarship to high school seniors with a 3.75 or higher grade point average. Presidential scholars must demonstrate leadership skills and school and community involvement.
- South Central College's foundations provide more than \$250,000 in student scholarships annually. Scholarship deadline is mid-March.
- South Central College recognizes the importance of student organizations and activities and the impact they have on campus life. The college employs a full-time student life director who coordinates extracurricular activities and events.
- South Central College has more than 50 career and professional majors taught by dedicated faculty. Civil technology and construction field supervision are the newest technical majors to be offered. Many programs have part-time, online and evening options.
- The college offers on-campus child care, career counseling and academic support services, including tutoring in math and writing, as well as assistance for students with disabilities.
- South Central College has fully accredited online courses developed and taught by qualified college faculty.
- South Central College emphasizes globalization and integrates an international perspective into the curriculum. Several international travel experiences are available to students.

## 4-year state universities



To be accepted at one of the seven state universities as a new first-year student, I've got to answer one of these three questions with a "yes":

- Did I rank in the top half of my high school graduating class?
- Did I score 21 or higher on the ACT standardized test?
- Did I receive a combined score of 1,000 or higher on the SAT standardized test?

Generally speaking, the state universities will accept me if I meet one of those requirements. Some of the universities may ask me to meet slightly different requirements. And if I don't meet the minimum requirements, they still might consider me for admission. I'll need to apply early in 12th grade for the best chance at being admitted, because I'm told some universities and programs do not have room for all qualified applicants.

### Graduate programs

The state universities offer graduate programs leading to masters' degrees and other advanced degrees and certificates. Students can call the office of graduate studies or the admissions office for information and a graduate program application.

### Minors, special options and preprofessional programs

The state universities offer many ways to pursue interests through a minor, emphasis, options or a preprofessional program in addition to programs listed on Page 31. Check with university admissions offices for details.

Preprofessional programs help students prepare for advanced study in areas such as agriculture, architecture, dentistry, engineering, law, medicine, optometry, pharmacy, physical therapy and veterinary medicine.

## Admission requirements

- Four years of English, including composition, literature and speech
- Three years of math, including two years of algebra, one of which is intermediate or advanced algebra, and one year of geometry
- Three years of science, including one year each of a biological and a physical science, all with significant laboratory experience
- Three years of social studies, including one year each of geography and U.S. history
- Two years of a single world language, including non-English native languages and American Sign Language
- One year of arts (visual arts and the performing arts of theater, music, dance and media arts)



# 4-year state university programs

## Undergraduate

	Bemidji State	Metropolitan State	Minnesota State, Mankato	Minnesota State Moorhead	St. Cloud State	Southwest Minnesota State	Winona State	MinnesotaOnline.org
Accounting	●	●	●	●	●	●	●	
Agricultural Business								
American Indian Studies	●							
Anthropology			●	●	●			
Art History			●	●	●			
Art/Studio Arts	●	●	●	●	●	●	●	
Astronomy								
Aviation & Airway Science			●	●	●		●	
Biology	●	●	●	●	●	●	●	
Biotechnology/Biochemistry			●	●	●	●	●	
Business Administration & Management	●	●	●	●	●	●	●	
Chemistry	●	●	●	●	●	●	●	
Commercial Art & Graphic Design	●							
Communication Sciences & Disorders			●	●	●	●		
Communication Studies	●	●	●	●	●	●	●	
Community Health	●		●	●	●	●	●	
Computer Science & Information Systems	●	●	●	●	●	●	●	
Construction Management	●	●	●	●	●	●	●	
Counseling - Chemical Dependency		●	●	●	●	●	●	
Criminal Justice/Corrections	●	●	●	●	●	●	●	
Cytotechnologist							●	
Dental Hygienist		●	●					
Early Childhood Studies		●						
Earth Sciences/Geology			●	●	●	●	●	
East Asian Studies				●				
Economics	●	●	●	●	●	●	●	
Engineering Technology - Automotive			●					
Engineering Technology - Computer			●					
Engineering Technology - Electronic	●	●						
Engineering - Civil			●					
Engineering - Composite Materials							●	
Engineering - Computer			●	●				
Engineering - Electrical			●	●	●	●	●	
Engineering - Manufacturing					●			
Engineering - Mechanical			●	●	●	●	●	
English - Language, Literature, Writing	●	●	●	●	●	●	●	
Environmental Science/Studies	●	●	●	●	●	●	●	
Ethnic & Cultural Studies		●	●	●	●	●	●	
Family Consumer Science			●					
Filmmaking/Film Studies				●	●			
Finance		●	●	●	●	●	●	
Fitness, Sports & Recreation	●	●	●	●	●	●	●	
Food Sciences			●					
Geography & Cartography	●			●				

	Bemidji State	Metropolitan State	Minnesota State, Mankato	Minnesota State Moorhead	St. Cloud State	Southwest Minnesota State	Winona State	MinnesotaOnline.org
Gerontology				●				
Health Services Administration								
History	●	●	●	●	●	●	●	
Hospitality Management		●				●		
Human Resources Management		●					●	
Humanities	●	●		●				
Individualized & General Studies	●	●	●	●			●	
Industrial/Manufacturing Technology	●	●	●	●	●	●	●	
Insurance				●				
International Business		●	●	●				
International Relations/Global Studies	●	●	●	●			●	
Land Surveying					●			
Languages - French			●				●	
Languages - General				●				
Languages - German	●	●		●			●	
Languages - Spanish	●	●	●	●	●	●	●	
Latin American Studies				●				
Law Enforcement		●	●					
Legal Studies/Paralegal			●	●			●	
Liberal Arts	●	●	●	●	●	●	●	
Management Information Systems		●	●	●			●	
Marketing	●	●	●	●	●	●	●	
Mathematics	●	●	●	●	●	●	●	
Medical Technology/Clinical Lab Science	●	●	●	●	●	●	●	
Meteorology				●				
Multidisciplinary Studies			●			●		
Music	●	●	●	●	●	●	●	
Music Industry Management			●	●		●	●	
Nuclear Medical Technology								
Nursing	●	●	●	●	●	●	●	
Philosophy	●	●	●	●	●	●	●	
Physics	●	●	●	●	●	●	●	
Political Science	●	●	●	●	●	●	●	
Psychology	●	●	●	●	●	●	●	
Public Administration			●	●	●	●	●	
Publishing			●					
Radiologic Technology				●				
Real Estate				●				
Scandinavian Studies			●					
Screenwriting		●						
Small Business Management				●				
Social Sciences/Studies	●	●	●	●	●	●	●	
Social Work/Human Services	●	●	●	●	●	●	●	
Sociology	●	●	●	●	●	●	●	

	Bemidji State	Metropolitan State	Minnesota State, Mankato	Minnesota State Moorhead	St. Cloud State	Southwest Minnesota State	Winona State	MinnesotaOnline.org
Statistics								
Teaching - Early Childhood	●	●	●	●	●	●	●	
Teaching - Elementary	●	●	●	●	●	●	●	
Teaching - K-12 Specialty Fields	●	●	●	●	●	●	●	
Teaching - Middle/High School	●	●	●	●	●	●	●	
Teaching - Special Education					●	●	●	
Theater Arts & Drama	●	●	●	●	●	●	●	
Urban Planning & Regional Studies			●	●	●	●	●	
Wilderness Management	●							
Women's Studies		●	●	●	●	●	●	

Some programs are online only. Not all of the system's 3,500 programs are listed here. To find more, go to [www.mnscu.edu](http://www.mnscu.edu).



## Minnesota State Colleges &amp; Universities

**4-year state  
university programs****Graduate**

	Bemidji State	Metropolitan State	Minnesota State, Mankato	Minnesota State Moorhead	St. Cloud State	Southwest Minnesota State	Winona State	MinnesotaOnline.org
Anthropology & Archaeology			•	•				
Art/Studio Arts								
Biology	•		•	•				
Business Administration & Management		•	•	•	•			•
Communication Sciences & Disorders			•	•				
Communication Studies	•	•	•	•				
Community Health			•					
Computer Science & Information Systems		•	•	•				
Counseling - Chemical Dependency					•			
Counseling - College					•			
Counseling - K-12			•	•	•		•	
Counseling - Marriage and Family			•	•				
Counseling - Mental Health				•	•			
Counseling - Vocational Rehabilitation			•	•				
Criminal Justice/Corrections			•	•				
Dental Hygienist		•						
Dental Public Health		•						
Economics					•			
Education - Administration & Support			•	•	•		•	•
Engineering			•					
Engineering Management					•		•	
Engineering - Electrical					•			
Engineering - Mechanical					•			
English - Language, Literature & Writing	•	•	•	•	•		•	•
Environmental Science/Studies	•	•	•					
Ethnic & Cultural Studies		•						
Fitness, Sports & Recreation		•	•	•			•	
Geography & Cartography		•	•	•				
Gerontology		•	•	•				
History		•	•	•				
Industrial/Manufacturing Technology	•	•	•					
Languages - French		•	•					
Languages - Spanish		•	•					
Liberal Arts	•	•	•	•				
Management Information Systems	•	•	•				•	
Mathematics		•	•					
Multidisciplinary Studies		•	•	•				
Music		•	•	•				
Nursing	•	•	•	•	•		•	•
Nursing - Public Health & Community	•	•	•	•				
Nursing Administration	•	•	•	•				
Physics		•						

Some programs are online only. Not all of the system's 3,500 programs are listed here. To find more, go to [www.mnscu.edu](http://www.mnscu.edu).

	Bemidji State	Metropolitan State	Minnesota State, Mankato	Minnesota State Moorhead	St. Cloud State	Southwest Minnesota State	Winona State	MinnesotaOnline.org
Political Science			•					
Psychology		•						
Psychology - Clinical			•		•			•
Psychology - Counseling	•		•					
Psychology - Industrial & Organizational			•		•			
Psychology - School				•				
Public Administration		•	•	•			•	
Publishing				•				
Social Work/Human Services			•	•				
Sociology			•					
Statistics				•				
Teaching - One or More Fields	•	•	•	•	•	•	•	•
Theater Arts & Drama			•					
Urban Planning & Regional Studies			•					
Women's Studies		•						



**Tuition and fees (2007-2008):** \$6,507**FAFSA code:** 002336**City/population:**

Bemidji/13,059

**Enrollment:**

Total number students served	6,474
Full-year equivalent enrollment	4,229
Percent male	43.4%
Percent female	56.6%
Percent students of color	6.4%

**Degrees offered:**

Associate degrees, bachelor's degrees, master's degrees, undergraduate and master's certificates

**Largest programs:**

Technological studies, psychology, criminal justice, education, business administration

**Unique programs:**

Applied engineering, aquatic biology, environmental studies, clinical laboratory science, Indian studies, design technology, creative and professional writing, sport management, marketing communication, international studies, baccalaureate nursing

**Special options:**

Program minors — Applied public policy, fraud examination, Ojibwe, exercise science, geographic information systems, developmental adapted physical education, cultural resource management, management information systems

Emphases/options — Construction management, wetlands ecology, criminalistics, model making, vocal performance, outdoor education, manufacturing technology, theater production

Preprofessional programs — 13 including law, medicine, chiropractic, occupational therapy, veterinary medicine, pharmacy

**Intercollegiate sports:**

Men's NCAA Division I ice hockey, NCAA Division II football, indoor and outdoor track and field, basketball, baseball, golf; women's NCAA Division I ice hockey, NCAA Division II volleyball, indoor and outdoor track and field, basketball, cross country, golf, soccer, softball

**Student activities:**

Nationally recognized Outdoor Program Center; more than 85 clubs and organizations in areas such as ceramics, theater, choir, social work, Spanish, political science and honors. Also special interest organizations including Council of Indian Students, International Student Organization, Ducks Unlimited, Colleges Against Cancer, pep band; intramural and sports-recreation programs including flag football, sand volleyball, broomball, dodge ball, rugby and running; Student Senate and residence hall councils; Greek service and social organizations

**Housing:**

Six residential halls offer a variety of living options, from double and single rooms to two-person suites and single-parent apartments. The halls are connected to the campus underground walkway system and conveniently located near the campus fitness and recreation center. Newly renovated suites will open in winter 2008.

**Bemidji State University Highlights**

Experience the lake, the learning and the life that are uniquely Bemidji State University. Signature themes of environmental stewardship, community service and global understanding help guide the university's decisions and actions.

- **Major opportunities:** More than 65 majors and preprofessional programs, many customizable through an emphasis area, concentration or specialization; more than 400 courses offered online for distance learners.
- **World view and responsibility:** All students study global, environmental and civic stewardship through the liberal arts requirements. Recognized nationally for programs, courses and activities that address social and environmental concerns.
- **Small classes:** More than half of the classes have 20 or fewer students; only 5 percent of classes have 50 or more students.
- **Personal attention:** Low student-to-faculty ratio of 19-to-1. Professors are accessible outside of class.
- **Excellent students:** One of the top Minnesota state universities for the percentage of new freshmen enrolled who ranked in the upper 25 percent of their high school classes.
- **Affordable tuition:** Students may take 12 to 18 credits for the same flat rate. Resident or reciprocity tuition rates are available to all undergraduates.
- **Athletic-academic champions:** Since 2000, nine Bemidji State University athletes have been named Academic All-Americans. In 2006, the football team captured the Northern Sun Intercollegiate Conference championship title.
- **Advanced degrees:** Thirteen master's degree programs, including online graduate degrees in education, special education and industrial technology.





## METROPOLITAN STATE UNIVERSITY


[www.metrostate.edu](http://www.metrostate.edu)

 To arrange a campus visit:  
(651) 793-1300

 Admissions: (651) 793-1300  
TTY: (651) 772-7687

 700 Seventh St. E.  
St. Paul, MN 55106-5000

**Tuition and fees (2007-2008):** \$5,293

**FAFSA code:** 010374

**Enrollment:**

Total number students served	9,021
Full-year equivalent enrollment	4,571
Percent male	39.6%
Percent female	60.4%
Percent students of color	25.6%

**Degrees offered:**

Bachelor's degrees, master's degrees, certificates, applied doctorate degrees

**Largest programs:**

Individualized studies, business administration, accounting, criminal justice, psychology

**Unique programs:**

Applied doctorate in nursing, bachelor's degree completion program for Peace Corps volunteers, computer forensics, early childhood education, screenwriting, technical communication, urban elementary education

**Special options:**

Program minors – Biology, child psychology, creative writing, criminal justice, ethnic studies, industrial and organizational psychology, media literacy, mental health and psychology, practical ethics, project management, theater, violence prevention and intervention

Emphases/options — Individualized bachelor's degree, which includes collaborative programs with community and technical colleges; urban teacher programs for elementary, middle school and secondary licensure; human services bachelor's degree with focus areas including corrections, disability studies, family studies, human services administration, social gerontology, training and adult development, violence prevention and intervention

**City/population:**

 St. Paul/287,385  
Minneapolis/387,711

**Student activities:**

Student Senate; student newspaper; University Activities Board; Metro Theater Underground; International Student Organization; Graduate Student Advisory Committee; interest area and professional-focused student organizations such as Law Enforcement Club, Nursing Students Organization, Psychology Club, Technical Writers Group, Urban Teacher Club, several ethnic and cultural-specific organizations such as Asian Student Organization, Lavender Bridge (GLBT students), African American Association, The Latinos and VOICES (Voices of Indian Council for Educational Success)

**Housing:**

The university has no on-campus housing; rental units are within walking distance or on local bus lines.


**Metropolitan State University Highlights**

- Meets the unique educational needs of those living and working in the metropolitan region as the premier urban, public, comprehensive state university in the Twin Cities.
- Focuses on providing high-quality, affordable educational programs and services in a student-centered environment.
- Provides more than 50 undergraduate programs and a number of graduate programs with the option to create individualized degree programs.
- Has faculty who bring both practical and theoretical knowledge to their instruction.
- Reflects the area's rich diversity in its students, faculty, staff and community partnerships.
- Demonstrates unwavering commitment to civic engagement.
- Offers daytime, evening, online and weekend classes on two main campuses plus several other locations, with comfortable class sizes and flexible, innovative scheduling. The Minneapolis campus is co-located with Minneapolis Community and Technical College.
- Awards credits for college-level learning gained through nonclassroom experience.
- Encourages creative learning strategies, such as online learning, internships and independent study.
- Partners with the Peace Corps to enable volunteers to earn bachelor's degrees while serving.
- Named a Minnesota State Colleges and Universities center of excellence – the Center for Strategic Information Systems and Security – with Inver Hills Community College and Minneapolis Community and Technical College.
- Partners with Minneapolis Community and Technical College and Saint Paul College for the Power of You program, which provides the opportunity for recent graduates of St. Paul or Minneapolis public high schools to attend tuition free.

**Tuition and fees (2007-2008):** \$5,795**FAFSA code:** 002360**Enrollment:**

Total number students served	16,504
Full-year equivalent enrollment	13,343
Percent male	45.7%
Percent female	54.3%
Percent students of color	6.5%

**Degrees offered:**

Associate degrees, bachelor's degrees, master's degrees, applied doctorate degrees, specialist degrees, undergraduate and graduate certificates

**Largest programs:**

Management, elementary education, biology, finance, marketing

**Unique programs:**

Bachelor's degree astronomy, athletic training, automotive engineering technology, aviation management, construction management, civil engineering, computer engineering technology, family consumer science, Scandinavian studies, technical communication, urban planning and regional studies; graduate-level anthropology, community health, experiential education, industrial and organizational psychology, industrial and manufacturing engineering, applied doctorate in counselor education and supervision

**Special options:**

Program minors – Business law, corporate and community fitness and wellness, development and adapted physical education, geology, Latin American studies, military science, teaching English as a Second Language

Emphases/options – Art teaching, human resource management, elementary and secondary school administration, family nurse practitioner, financial planning,

gerontology, microbiology, public relations, sports management, toxicology

Preprofessional programs — 16 programs, including agriculture, chiropractic, dental, engineering, forestry, law, medicine, mortuary science, occupational therapy, optometry, osteopathic medicine, pharmacy, physical therapy, podiatric medicine, theology, veterinary medicine

**Intercollegiate sports:**

Men's Division I hockey, Division II baseball, basketball, cross country, football, golf, swimming, tennis, indoor and outdoor track, wrestling; women's Division I hockey, Division II basketball, cross country, golf, soccer, softball, swimming, tennis, indoor and outdoor track, volleyball, bowling

**Student activities:**

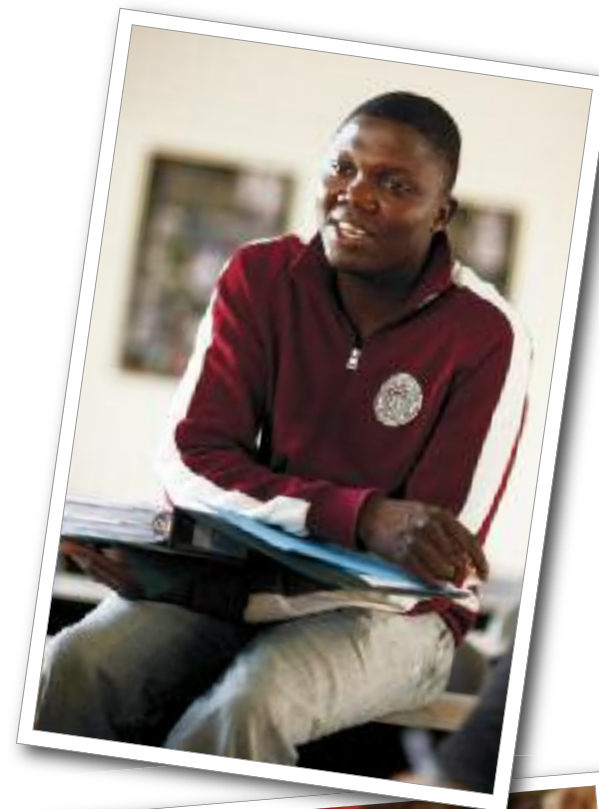
Nearly 200 organizations, including academic student groups, student government and leadership, intramural sports, religious organizations, international student groups, honorary and professional fraternities and sororities, special interest groups

**Housing:**

Three on-campus residence halls feature First Year Experience programs for freshmen. New, suite-style, 600-person residence hall to open in 2008. Many off-campus rental units for upperclassmen are within walking distance of campus.

**Minnesota State University, Mankato, Highlights**

- 85 miles south of Minneapolis and St. Paul. Beautifully landscaped, 300-acre campus overlooking majestic Minnesota River Valley.
- Campus tours during the academic year every weekday at 10 a.m. and 2 p.m. and during the summer at 10 a.m. and 1 p.m.
- 158 majors, 16 preprofessional programs, 83 graduate programs.
- More than \$80 million in scholarships, assistantships, grants, work-study, loans available.
- 70,000-square-foot addition to science building, with state-of-the-art laboratories and classrooms, to be completed in 2008.
- Wireless Internet connectivity from all indoor and outdoor study and dining areas.
- Nation's only "Rec-Tech" exercise facility, where students exercise on 40 aerobic machines while accessing e-mail, searching the Internet, listening to Web radio or watching cable TV.
- 4,800-square-foot student weight room, three student basketball and volleyball courts, walking and running track.
- One of two ABET-accredited civil engineering programs in Minnesota; nation's only ABET-accredited automotive engineering technology program.
- One of only four M.B.A. programs in Minnesota accredited by AACSB International.
- Theater department presents 10 musicals and plays per year in two theaters, plus four summer productions.
- Undergraduate students conduct applied research side-by-side with nationally recognized faculty members.
- Nationally ranked teams in forensics, Clean Snowmobile competition, SAE automotive design, basketball, wrestling, track and field, women's golf, bowling.





**Tuition and fees (2007-2008):** \$5,585**FAFSA code:** 002367**Enrollment:**

Total number students served	9,185
Full-year equivalent enrollment	6,818
Percent female	40.4%
Percent male	59.6%
Percent students of color	5.5%

**Degrees offered:**

Certificates, associate degrees, bachelor's degrees, master's degrees, applied doctorate degrees, specialist degrees, graduate certificates

**Largest programs:**

Elementary education, mass communications, business administration, biosciences, art

**Unique programs:**

Athletic training, biotechnology, construction management, East Asian studies, exercise science, film studies, geosciences, health services administration, industrial technology, international studies, legal studies, music industry, operations management, speech/language/hearing science

**Special options:**

Program minors — Astronomy, religious studies, theater dance, language and literacy, women's studies

Emphases/options — Archeology, biotechnology, computer music, digital design and production, film and video music, graphic design, health and medical sciences, integrated advertising and public relations, broadcast and online journalism

Preprofessional programs — Agriculture, architecture, chiropractic, dentistry, engineering, forestry, medicine, mortuary science, occupational therapy, optometry, pharmacy, physical therapy, physician's

assistant, respiratory care, veterinary science, wildlife management

**Intercollegiate sports:**

Men's football, cross country, basketball, wrestling, track; women's soccer, volleyball, cross country, golf, basketball, tennis, track, softball, swimming and diving

**Student activities:**

More than 120 organizations, academic clubs, honor societies, musical groups, political and service clubs, intramural sports and recreation, fraternities and sororities, newspaper, radio station and campus news television program

**Housing:**

Eight residence halls and an on-campus apartment complex offer a variety of living options, including a freshman honors floor. Rental housing is available close to campus.

**City/population:**

Moorhead-Fargo area/125,178

**Minnesota State University Moorhead Highlights**

- The Fargo-Moorhead area, located 3.5 hours northwest of the Twin Cities, is home to more than 25,000 college students.
- Campus tours are available Monday through Friday at 9:30 a.m. and 1:30 p.m. when classes are in session.
- Average class size is 24, ensuring personalized learning in an engaging environment.
- Among the least expensive four-year residential universities in Minnesota.
- Small, interconnected campus with easy access to parking and transportation.
- High-speed wireless Internet access is available throughout most of campus, including the residence halls.
- Offers 69 majors with 90 different emphases and options, 16 preprofessional programs, 13 graduate programs, and 32 areas of teacher licensure preparation.
- Six faculty members named as Minnesota Professor of the Year in the past 20 years, more than any other university in Minnesota, designated by the Carnegie Foundation for the Advancement of Teaching.
- Professors teach 99 percent of the courses and serve as academic advisors and mentors.
- Tri-College University lets students take courses at North Dakota State University and Concordia College at the Minnesota State University Moorhead tuition rate.
- Outstanding undergraduate research-based science program, with more than 200 students conducting research with faculty.
- New investment in science education facilities totals \$30 million.
- Admissions information available in the Minneapolis-St. Paul metro area through the university's regional office at (952) 226-1055.





**Tuition and fees (2007-2008):** \$5,719

**FAFSA code:** 002377

#### Enrollment:

Total number students served 19,671  
Full-year equivalent enrollment 13,825  
Percent male 44.1%  
Percent female 55.9%  
Percent students of color 6.2%

#### Degrees offered:

Associate degrees, bachelor's degrees, master's degrees, applied doctorate degrees, specialist degrees, certificates

#### Largest programs:

Marketing, elementary education, mass communications, management, finance

#### Unique programs:

Meteorology, aviation maintenance management, nuclear medical technology, radiologic technology (x-ray and diagnostic imaging), land surveying and mapping, small business management, statistics, travel and tourism, Chicano and Chicana studies, insurance, real estate, Latin American studies, hydrology

#### Special Options:

Program minors — Developmental and adapted physical education, African studies, American Indian studies, Chicano/Chicana studies, community health, computer networking, dance, data communications, East Asian studies, ethnic studies, geographic information systems, gerontology, human relations, military science, outdoor education, reading instruction, religious studies, Russian, Soviet and Eurasian studies, technology studies, therapeutic recreation, women's studies, optics, teaching English as a second language, corrections, private security

Emphases/options — 56, including professional flight, rehabilitation counseling, community counseling, hydrology, astrophysics, public history, public relations, advertising, broadcasting, news editorial, piano pedagogy, creative writing, applied statistics, actuarial science, construction management, electro-optics, applied sociology, graphic design, photography, drawing, printing, sculpture, printmaking, ceramics

Preprofessional programs — Chiropractic, dentistry, law, medicine, optometry, physical therapy, physician assistant, podiatry, veterinary, agriculture, forestry, medical records, horticulture, dental hygiene, pharmacy, occupational therapy, mortuary science, engineering

#### Intercollegiate sports:

Men's hockey, tennis, basketball, track, indoor track and field, swimming and diving, cross country, golf, baseball, football, wrestling; women's hockey, volleyball, tennis, basketball, soccer, track, indoor track and field, Nordic skiing, swimming and diving, cross country, golf, softball

#### Student activities:

230 student organizations in the arts, language and culture, politics and social concerns, recreational sports, student government and Greek organizations; club sports such as rowing, rugby, lacrosse and soccer

#### Housing:

The university offers nine residence halls on campus; apartments and other housing options are available nearby.

#### St. Cloud State University Highlights

- 175 majors, minors and preprofessional programs in business, fine arts and humanities, social sciences, education and science and engineering, and 50 master's degrees.
- Nearly every national accreditation available for programs and services.
- Global focus includes strong international program: 950 students from 90 countries on campus; every year, more than 450 students study abroad in 20 countries.
- Students work side-by-side with professors on research and frequently present their work nationally.
- 15th-largest producer of teachers in the nation.
- G.R. Herberger College of Business accredited nationally and internationally.
- Campus tours can be scheduled online for any weekday of the year.
- Men's tennis won its fifth consecutive conference title and sixth consecutive NCAA Division II tournament bid in 2006.
- Men's ice hockey advanced to the WCHA tournament and was among 16 teams selected to play in the NCAA Division I Men's Ice Hockey Championship.
- Men's basketball made its second straight NCAA Division II regional tournament appearance in 2007.
- Women's swimming and diving team placed 19th, and the men's team placed 21st, at the 2007 NCAA Division II National Championships.
- More than \$80 million in scholarships, grants, loans and student work opportunities are distributed to students each year..
- Strong liberal arts basics are combined with specialized programs for careers in the global community.
- More than 230 academic, governmental and social organizations offer friendship, leadership and volunteer opportunities.



**Tuition and fees (2007-2008):** \$6,242**FAFSA Code:** 002375**Enrollment:**

Total number students served	7,353
Full-year equivalent enrollment	3,754
Percent male	41.4%
Percent female	58.6%
Percent students of color	4.8%

**Degrees offered:**

Associate in Arts, bachelor's degrees, master's degrees

**Largest programs:**

Education, business, social work, history, English

**Unique programs:**

Culinology, hotel and restaurant administration, honors program, global studies, radio and TV, indigenous nations and Dakota studies

**Special options:**

Emphases/options – Cytology (biology), sports management, exercise science, health care management

Program minors – Anthropology, classical studies, coaching, criminal justice, French, geography, geology, indigenous nations and Dakota studies, Latin American studies, leadership studies, rural and regional studies, social welfare, speech communication, women's studies, writing

Preprofessional programs — Agriculture, chiropractic, dentistry, engineering, fishery and wildlife management, forestry, law, medicine, ministry, mortuary science, nursing, occupational therapy, optometry, pharmacy, physical therapy, veterinary medicine

**City/population:**  
Marshall/12,932**Intercollegiate sports:**

Men's football, baseball, basketball, wrestling; women's basketball, golf, soccer, softball, tennis, volleyball; co-ed wheelchair basketball.

University competes in NCAA Division II athletics as a member of the Northern Sun Intercollegiate Conference.

**Student activities:**

More than 85 clubs, including student government, newspaper, radio and TV stations, literary arts magazines; social, environmental, professional and academic-related organizations

**Housing:**

The university houses approximately 1,000 students on campus, including the 141-bed Residence Apartments that opened in fall 2006. Housing is close to the Student Center and all academic buildings.

**Southwest Minnesota State University Highlights**

Southwest Minnesota State University is a fully accredited liberal arts university founded in 1963, the youngest of the four-year institutions in the Minnesota State Colleges and Universities system. The university delivers a high-quality liberal arts education, offering 43 undergraduate programs, 51 minors, four associate-degree majors and three master's programs.

- Ranked No. 1 in its category by *U.S. News and World Report* in nine of the last 10 years.
- \$9 million library renovation.
- Wireless capabilities in majority of academic areas.
- First four-year culinology program in the country approved by the Research Chefs Association.
- A fully accessible campus, with interconnected academic and Student Center buildings.
- A diverse campus of 230 international students representing 26 countries.
- Small class sizes with a student-to-teacher ratio of 20-to-1 and taught by professors, not graduate assistants.
- A \$16 million Regional Events Center currently under construction.
- A Day at SMSU, a prospective student and parent visit program, scheduled for Nov. 17. Students considering the university can call any time to set up a visit.
- An affordable, high-quality education in a nurturing, challenging academic environment.





**Tuition and fees (2007-2008):** \$6,117

**FAFSA code:** 002394

#### Enrollment:

Total number students served	9,168
Full-year equivalent enrollment	7,675
Percent male	36.8%
Percent female	63.2%
Percent students of color	4.6%

#### Degrees offered:

Associate degrees, bachelor's degrees, master's degrees, applied doctorate degrees, specialist degrees

#### Largest programs:

Education (early childhood, elementary and secondary), math and computer science, business administration, social work, nursing, mass communication

#### Unique programs:

Composite materials engineering, paralegal, music business, graphic design, master's program in nursing

#### Special options:

Program minors — Adventure tourism, airway science aviation, biochemistry, business law, dance, electronics, geography, global studies, intercultural communication, international business

Emphases/Options — Advertising, broadcasting, journalism, photojournalism, public relations, law enforcement, corrections, cell and molecular biology, ecology, water resources management

Preprofessional programs — Dentistry, engineering, law, medicine, mortuary science, optometry, pharmacy, physical therapy, physician assistant, veterinary medicine

#### Intercollegiate sports:

Fifteen men's and women's NCAA-II varsity sports, including baseball, basketball, cross country, football, golf, gymnastics, soccer, softball, tennis, track and field, volleyball

#### Student activities:

More than 210 clubs and organizations for academics, fine arts, athletics, media, culture and cultural issues, religion, and social and service clubs. The university is host to professional cultural programs as well as student theatrical, musical and dance performances.

#### Housing:

Seven residence halls on campus. Three other residence halls and the University Apartments at East Lake are connected by shuttle bus to the main Winona campus. Numerous off-campus rental housing opportunities are within five blocks of campus.



#### Winona State University Highlights

- Ranked as a "top-tier" institution among Midwestern universities by *U.S. News & World Report* and ranked among the "Best in the Midwest" by The Princeton Review.
- For the 11th consecutive year, Winona State University is one of America's 100 Best College Buys, recognizing quality and value.
- Winona State University is the lead institution in the Center for Integrated Health Science Education and Practice, a collaborative program involving other Minnesota State Colleges and Universities and health care providers focused on advancing Minnesota as a leader in health care education, practice, research and innovation.
- Winona State University is a "laptop university" and fully wireless with access to the campus network and the Internet from literally anywhere on campus.
- Together with the Winona State University-Rochester Center, the university offers 80 academic majors and 16 graduate programs.
- Winona State University is home to the National Child Protection Training Center, offering experience and training for professionals from the judicial system, social services and law enforcement from across the nation.
- Winona State University's Learning for the 21st Century program prepares individuals for life, work and leadership in a rapidly changing, competitive and complex global society. The program focuses on learning opportunities that help solve real problems and on civic responsibility, community service, comprehensive career counseling and exceptional student services.



# What to do when

## 9th and 10th grades

- Take classes that prepare you for education after high school, especially in math, English, science and social studies. Plan carefully with your high school counselor.
- Visit your school career center or counseling office to explore information about careers and various colleges and universities.

## By 11th grade

- Request information from colleges and universities. Go to [www.mnscu.edu](http://www.mnscu.edu) and visit their Web sites. Call admissions offices and ask for brochures. Or you can mail the postcard in this book or go online at [www.mnscu.edu/students/requestinfo/requestinfo.php](http://www.mnscu.edu/students/requestinfo/requestinfo.php) to request brochures.
- Schedule campus visits this year and in the fall of your senior year.
- Take the ACT or SAT test if you might attend a four-year university. One of these standardized tests is required for admission to a four-year state university. (No ACT or SAT tests are required for admission to a two-year state college, but after you are admitted, you will need to take a test for placement in the appropriate classes based on your reading, writing and mathematics skills.)
- Consider taking some college courses beginning in 11th grade if you are eligible.

## During 12th grade

- Make campus visits to colleges that interest you most.
- Apply to college. For a four-year university, apply in the fall. For a two-year college, applications are accepted until the college semester begins, but applying early gives you a better chance of getting into the programs and courses you want.  
You can get an application:
  - From your high school counseling office.
  - Online at [www.mnscu.edu/students/application.html](http://www.mnscu.edu/students/application.html).
  - By mail by calling toll-free at 1-888-667-2848.
  - By sending in the postcard in this book.
- Apply for financial aid after Jan. 1 of your senior year even if you're not sure which college to attend. Get the free federal financial aid application from your high school counselor, college admissions offices or on the Web at [www.fafsa.ed.gov](http://www.fafsa.ed.gov).
- Look for scholarships. College admissions offices and high school counselors can help you. Check online for additional scholarship information at [www.mnscu.edu/scholarships](http://www.mnscu.edu/scholarships).



## Tips for campus visits

- Call a college or university admissions office to schedule a campus tour. If you want to know more about particular programs, activities or sports, also ask to meet with someone in those areas.
- Write your questions in a notebook and take it along.
- On the tour, ask about academic programs, clubs and activities, study-abroad programs, special services you might need, tuition and other costs, and where to find out about financial aid and scholarships.
- Talk to students, faculty and staff as you tour the campus.
- Check out the library, computer labs, bookstore, cafeteria and the campus neighborhood.
- If you plan to live on campus, ask to see a typical dorm room. Or ask about off-campus housing options.
- Ask about part-time jobs and if help is available to find them since many students also work.

**Yes! Please send me more information about these colleges and universities:** (Return one card and give the other to a friend.)

## 2yr STATE COLLEGES

- |  |  |
|--|--|
| <input type="checkbox"/> Alexandria Technical College                  | <input type="checkbox"/> Normandale Community College                  |
| <input type="checkbox"/> Anoka-Ramsey Community College                | <input type="checkbox"/> North Hennepin Community College              |
| <input type="checkbox"/> Anoka Technical College                       | <input type="checkbox"/> NE-Hibbing Community College                  |
| <input type="checkbox"/> Central Lakes College                         | <input type="checkbox"/> NE-Itasca Community College                   |
| <input type="checkbox"/> Century College                               | <input type="checkbox"/> NE-Mesabi Range Community & Technical College |
| <input type="checkbox"/> Dakota County Technical College               | <input type="checkbox"/> NE-Rainy River Community College              |
| <input type="checkbox"/> Fond du Lac Tribal & Community College        | <input type="checkbox"/> NE-Vermilion Community College                |
| <input type="checkbox"/> Hennepin Technical College                    | <input type="checkbox"/> Northland Community & Technical College       |
| <input type="checkbox"/> Inver Hills Community College                 | <input type="checkbox"/> Northwest Technical College                   |
| <input type="checkbox"/> Lake Superior College                         | <input type="checkbox"/> Pine Technical College                        |
| <input type="checkbox"/> Minneapolis Community & Technical College     | <input type="checkbox"/> Ridgewater College                            |
| <input type="checkbox"/> Minnesota State College - Southeast Technical | <input type="checkbox"/> Riverland Community College                   |
| <input type="checkbox"/> Minnesota State Community & Technical College | <input type="checkbox"/> Rochester Community & Technical College       |
| <input type="checkbox"/> Minnesota West Community & Technical College  | <input type="checkbox"/> St. Cloud Technical College                   |
|  | <input type="checkbox"/> Saint Paul College                            |
|  | <input type="checkbox"/> South Central College                         |

## 4yr STATE UNIVERSITIES

- |  |   |
|--|---|
| <input type="checkbox"/> Bemidji State University            | <input type="checkbox"/> Minnesota State University Moorhead  |
| <input type="checkbox"/> Metropolitan State University       | <input type="checkbox"/> St. Cloud State University           |
| <input type="checkbox"/> Minnesota State University, Mankato | <input type="checkbox"/> Southwest Minnesota State University |
|  | <input type="checkbox"/> Winona State University              |

Name (Please print)\* \_\_\_\_\_

Address\* \_\_\_\_\_ Apt. number \_\_\_\_\_

City/State/Zip\* \_\_\_\_\_

Country (if other than USA)\* \_\_\_\_\_ Phone \_\_\_\_\_

E-mail address \_\_\_\_\_

- ☐ I am interested in learning more about these careers/programs:

\_\_\_\_\_

- ☐ I am interested in these activities (such as music, theater, sports):

\_\_\_\_\_

If currently attending high school, name of school:

\_\_\_\_\_

Class rank (if known): \_\_\_\_\_

Year of high school graduation or GED completion: \_\_\_\_\_

When do you plan to enter college?

☐ Fall 2007 or Spring 2008

☐ Fall 2008 or Spring 2009

☐ Fall 2009 or Spring 2010

☐ Fall 2010 or later

Please check all that apply:

☐ I am a current PSEO student

☐ I am currently enrolled in college

☐ I am a college graduate

☐ Send me an application!

The information you provide will be used by college and university admissions personnel to respond to your request for information about Minnesota State Colleges and Universities. You need not answer all the questions; however, the more we know about you, the better we can respond. Items starred with an asterisk (\*) are needed to send you information.

**Yes! Please send me more information about these colleges and universities:** (Return one card and give the other to a friend.)

## 2yr STATE COLLEGES

- |  |  |
|--|--|
| <input type="checkbox"/> Alexandria Technical College                  | <input type="checkbox"/> Normandale Community College                  |
| <input type="checkbox"/> Anoka-Ramsey Community College                | <input type="checkbox"/> North Hennepin Community College              |
| <input type="checkbox"/> Anoka Technical College                       | <input type="checkbox"/> NE-Hibbing Community College                  |
| <input type="checkbox"/> Central Lakes College                         | <input type="checkbox"/> NE-Itasca Community College                   |
| <input type="checkbox"/> Century College                               | <input type="checkbox"/> NE-Mesabi Range Community & Technical College |
| <input type="checkbox"/> Dakota County Technical College               | <input type="checkbox"/> NE-Rainy River Community College              |
| <input type="checkbox"/> Fond du Lac Tribal & Community College        | <input type="checkbox"/> NE-Vermilion Community College                |
| <input type="checkbox"/> Hennepin Technical College                    | <input type="checkbox"/> Northland Community & Technical College       |
| <input type="checkbox"/> Inver Hills Community College                 | <input type="checkbox"/> Northwest Technical College                   |
| <input type="checkbox"/> Lake Superior College                         | <input type="checkbox"/> Pine Technical College                        |
| <input type="checkbox"/> Minneapolis Community & Technical College     | <input type="checkbox"/> Ridgewater College                            |
| <input type="checkbox"/> Minnesota State College - Southeast Technical | <input type="checkbox"/> Riverland Community College                   |
| <input type="checkbox"/> Minnesota State Community & Technical College | <input type="checkbox"/> Rochester Community & Technical College       |
| <input type="checkbox"/> Minnesota West Community & Technical College  | <input type="checkbox"/> St. Cloud Technical College                   |
|  | <input type="checkbox"/> Saint Paul College                            |
|  | <input type="checkbox"/> South Central College                         |

## 4yr STATE UNIVERSITIES

- |  |   |
|--|---|
| <input type="checkbox"/> Bemidji State University            | <input type="checkbox"/> Minnesota State University Moorhead  |
| <input type="checkbox"/> Metropolitan State University       | <input type="checkbox"/> St. Cloud State University           |
| <input type="checkbox"/> Minnesota State University, Mankato | <input type="checkbox"/> Southwest Minnesota State University |
|  | <input type="checkbox"/> Winona State University              |

Name (Please print)\* \_\_\_\_\_

Address\* \_\_\_\_\_ Apt. number \_\_\_\_\_

City/State/Zip\* \_\_\_\_\_

Country (if other than USA)\* \_\_\_\_\_ Phone \_\_\_\_\_

E-mail address \_\_\_\_\_

- ☐ I am interested in learning more about these careers/programs:

\_\_\_\_\_

- ☐ I am interested in these activities (such as music, theater, sports):

\_\_\_\_\_

If currently attending high school, name of school:

\_\_\_\_\_

Class rank (if known): \_\_\_\_\_

Year of high school graduation or GED completion: \_\_\_\_\_

When do you plan to enter college?

☐ Fall 2007 or Spring 2008

☐ Fall 2008 or Spring 2009

☐ Fall 2009 or Spring 2010

☐ Fall 2010 or later

Please check all that apply:

☐ I am a current PSEO student

☐ I am currently enrolled in college

☐ I am a college graduate

☐ Send me an application!

The information you provide will be used by college and university admissions personnel to respond to your request for information about Minnesota State Colleges and Universities. You need not answer all the questions; however, the more we know about you, the better we can respond. Items starred with an asterisk (\*) are needed to send you information.



Minnesota  
STATE COLLEGES  
& UNIVERSITIES

Go Places.  
2007-2008

**BUSINESS REPLY MAIL**

FIRST-CLASS MAIL PERMIT NO 171 ST. PAUL, MN

POSTAGE WILL BE PAID BY ADDRESSEE

MINNESOTA STATE COLLEGES & UNIVERSITIES  
STATE OF MINNESOTA  
395 JOHN IRELAND BLVD  
ST. PAUL, MN 55101-9799



Minnesota  
STATE COLLEGES  
& UNIVERSITIES

Go Places.  
2007-2008

**BUSINESS REPLY MAIL**

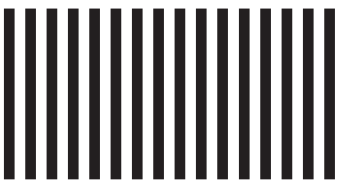
FIRST-CLASS MAIL PERMIT NO 171 ST. PAUL, MN

POSTAGE WILL BE PAID BY ADDRESSEE

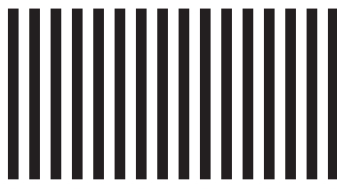
MINNESOTA STATE COLLEGES & UNIVERSITIES  
STATE OF MINNESOTA  
395 JOHN IRELAND BLVD  
ST. PAUL, MN 55101-9799



NO POSTAGE  
NECESSARY  
IF MAILED  
IN THE  
UNITED STATES



NO POSTAGE  
NECESSARY  
IF MAILED  
IN THE  
UNITED STATES





# Tips for parents and mentors

- **Talk about college** with your student and why it's smart to continue education after high school.
- **Ask what's important** to your student in choosing a college or university and what careers seem interesting.
- **Encourage** your student to look at campus Web sites and to request information.
- **Attend college fairs** together and ask college representatives about their campuses. They are eager to meet you.
- **Help schedule campus visits.** Go when classes are in session, if possible, so you can meet students and faculty and see typical campus life.
- **Ask about student services** and other ways the campus supports student success.
- **Find out about financial aid** to help reduce the costs. Fill out the Free Application for Federal Student Aid, or FAFSA form, as soon as possible after Jan. 1 in 12th grade. See [www.fafsa.ed.gov](http://www.fafsa.ed.gov).
- **Don't hover.** It's best for your student to take the lead in making these important plans for the future.
- **Have fun together!** You'll be a great coach.

## Helpful Web sites

Information about Minnesota State Colleges and Universities: [www.mnscu.edu](http://www.mnscu.edu)  
Print out an application form: [www.mnscu.edu/students/application.html](http://www.mnscu.edu/students/application.html)  
Search for a program: [www.mnscu.edu/programs/FindAProgram.php](http://www.mnscu.edu/programs/FindAProgram.php)  
Find online programs: [www.minnesotaonline.org](http://www.minnesotaonline.org)  
Information about transfer: [www.mntransfer.org](http://www.mntransfer.org)  
Free Application for Federal Student Aid: [www.fafsa.ed.gov](http://www.fafsa.ed.gov)  
Career planning, class listings, online courses: [www.iseek.org](http://www.iseek.org)  
Guide to career and educational exploration: [www.mncareers.org](http://www.mncareers.org)  
Create a personal portfolio: [www.efoliominnesota.com](http://www.efoliominnesota.com)

## About the cover photos



**Front cover:** Players on Dakota County Technical College's National Junior College Athletic Association Division I men's soccer team watch a teammate practice pinwheel kicks.

**Back cover:** Annually, about 33,500 students graduate from the 32 Minnesota State Colleges and Universities.

## National College Fair

Visit Minnesota State Colleges and Universities admissions representatives at the 2007 Minneapolis National College Fair

Tuesday, October 9: 9:00 a.m.-12:30 p.m.; 4:30-8:00 p.m.

Wednesday, October 10: 9:00 a.m.-12:30 p.m.

Minneapolis Convention Center  
Halls D & E  
1301 Second Ave. S.  
Minneapolis, MN 55403-2781  
(612) 335-6000

## Technical notes

"Tuition and fees" is annual tuition based on a full-time credit load of 15 credits per semester and fees. Enrollment data is from 2005-2006, the most recent data available. "Total number students served" is unduplicated annual head count. "Full-year-equivalent enrollment" is calculated by adding up the credits taken by all students and dividing by the number of credits considered to be a full-time course load of 30 credits per year for undergraduate students. Percentages for female and male students and students of color are percentages of unduplicated head count based on known factors. Colleges and universities vary in the percentage of students for whom race and ethnicity is known, ranging from 99.9 percent to 61.4 percent. City population figures are from the state demographer's office.

Sources: Minnesota State Colleges and Universities Research and Planning Office; Minnesota Department of Administration

**Upon request, *Go Places* is available in alternative formats by calling one of these numbers:**

**Twin Cities:** (651) 296-8012  
**Toll-free:** 1-888-MnSCU-4-U (1-888-667-2848)  
**TTY:** (651) 282-2660

The Minnesota State Colleges and Universities system is an Equal Opportunity employer and educator.

[www.mnscu.edu](http://www.mnscu.edu)

