



2006-07



ANNUAL REPORT



Minnesota State High School League
2100 Freeway Boulevard
Brooklyn Center, Minnesota 55430

(763) 560-2262
Fax: (763) 569-0499

mshsl.org

2006-2007 MSHSL Board of Directors



Jaime Sherwood
Wayzata
President



Todd Selk
Brainerd
Vice President



Glen Hasselberg
Staples-Motley
Treasurer



Eric Anderson
Cambridge-Isanti



Randy Bowen
Esko



Lawrence Ellis
Fridley



Michael Fahey
Carver



Michael Hammes
Mazeppa



Brad Johnson
Rushford-Peterson



John Klinnert
Fergus Falls



Mark Kuisle
Rochester Century



Becky Leuer
North Branch



Jackie Magnuson
Rosemount



Steve Niklaus
Annandale



Dean Ogg
Staples-Motley



Mark Quinlan
Centennial, Circle Pines



Dr. Polly Reikowski
Eagan



Gene Sullivan
Grey Eagle



Darrel Ulferts
Southwest Minnesota
Christian, Edgerton



Jeff Whisler
Mahtomedi

2006-2007 REPRESENTATIVE ASSEMBLY DELEGATES

The rulemaking body of the Minnesota State High School League

CLASS A REGIONS

Region 1A

1. John Ostrowski, Athletic Director, Dover-Eyota
2. Jerry Reker, Principal, Kasson-Mantorville
3. Dave Runningen, Coach, Houston

Region 2A

4. Randy Soma, Activities Director, Fairmont
5. Craig Morgan, Athletic Director, Minnesota Valley Lutheran, New Ulm
6. Mindy Sparby, Athletic Director, New Richland-H-E-G

Region 3A

7. Bob Grey, Athletic Director, Montevideo
8. Bill Tauer, Athletic Director, Tracy-Milroy-Balaton
9. Steve Wiertzema, Athletic Director, Hills-Beaver Creek

Region 4A

10. Mike Aurich, Athletic Director, Concordia Academy
11. Brian Budish, Athletic Director, Meadow Creek Christian, Andover
12. Steve Eklund, School Board, Braham

Region 5A

13. Rick Fischer, Athletic Director, Sauk Centre
14. Emmett Keenan, Athletic Director, St. Cloud Cathedral
15. Dave Schroeder, Athletic Director, Maple Lake

Region 6A

16. Phil Jensen, Superintendent, Hawley
17. Lori Meissner, School Board, Brandon
18. Tom Trisko, Principal/AD, Brandon

Region 7A

19. Kathy Fredricksen, Athletic Director, Moose Lake
20. Willie Spelts, Athletic Director, Virginia
21. Roger Koster, Athletic Director, Silver Bay

Region 8A

22. John Schumacher, Athletic Director, Park Rapids
23. Joe McArthur, School Board, Waubun
24. Eldon Sparby, Principal, Greenbush-Middle River

CLASS AA REGIONS

Region 1AA

25. Byron Olson, Athletic Director, Lakeville North
26. Joel Leer, Principal, Northfield
27. Ken Hubert, Activities Director, Faribault

Region 2AA

28. Jeff Jeska, Activities Director, Waconia
29. Todd Waterbury, Activities Director, Mankato East
30. Perry Thinesen, Activities Director, Dassel-Cokato

Region 3AA

31. Tom Conlon, School Board, St. Paul
32. Chris McDonald, Coach, Eagan
33. Mike Sjoberg, Coach, St. Thomas Academy, Mendota Heights

Region 4AA

34. Erin Herman, Assistant Principal, Hill-Murray, Maplewood
35. Lee Alger, Activities Director, Tartan, Oakdale
36. Bob Madison, Athletic Director, Mounds View

Region 5AA

37. Mark Sanders, Athletic Director, Minneapolis South
38. Adam Holm, Athletic Director, Osseo
39. Mark Robertson, Superintendent, Fridley

Region 6AA

40. Kurt Habeck, Coach, Eastview, Apple Valley
41. Mary Haugen, Activities Director, Prior Lake
42. Dan Johnson, Activities Director, Hopkins

Region 7AA

43. Ron Larson, Athletic Director, St. Francis
44. Wade Carlson, School Board, Chisago Lakes
45. Joe Silko, Principal, Grand Rapids

Region 8AA

46. Harvey Crable, Activities Director, Bemidji
47. Lisa Johnson, Activities Director, Monticello
48. Mike Olson, Activities Director, Little Falls

MSHSL EXECUTIVE OFFICE

Executive Director Dave Stead
Executive Assistant Kristi Vesall
Associate Director Lisa Lissimore
Administrative Assistant Sheila Robinson
Associate Director Craig Perry
Administrative Assistant Ruth Atkins
Associate Director Jody Redman
Administrative Assistant Nancy Etter

Associate Director Kevin Merkle
Administrative Assistant Amanda Johnson
Officials' Coordinator Katie Vanderpoel
Director of Information Howard Voigt
Assistant Ellen Giloy
Media Credentialing Assistant Sandra Lindsey
Assistant Director Chris Franson
Assistant Michelle Jackson

Assistant Director Richard Matter
Accounting Assistant Sharon Bahma
Ticket Assistant Nancy Myers
Office Manager Betty Emerson
Administrative Assistant Sandra Lindsey
Receptionist Yvonne Walsh

President's Report



The member schools of the Minnesota State High School League continue to be respected throughout Minnesota, and nationally, for providing a wide variety of educational athletic and fine arts activities for all students who attend secondary schools. Our mission and beliefs statements speak to the schools' desire to provide "...educational opportunities...leadership and support..." as boards of education, school administrators, coaches, activity advisors and the entire school community work together—*Putting Students First*.

The 2006-07 school year will be remembered for the report issued by the Transfer Eligibility Committee. That committee, comprised of school board members, school personnel, parents, and a legislator, studied the transfer and residence bylaw and presented their findings to the League's Board of Directors and the member schools. The Representative Assembly heard the rationale for the committee's findings, discussed the potential changes and their effect on student eligibility and unanimously approved the committee's recommendations which modify the conditions for maintaining full eligibility when students transfer from one school to another.

Other actions approved by the Board of Directors include—

- ◆ An eight-day wrestling shut-down due to an outbreak of Herpes Gladiatorum
- ◆ Seeding the Class AAA and AAAA State Girls' Basketball Tournament
- ◆ Changes to the Fair Hearing Procedure
- ◆ The selection of Hamline University as the State Track and Field site for 2007 and beyond
- ◆ Assigning schools that sponsor speech to competitive sections not aligned with administrative regions
- ◆ Approval of a two-day Prep Bowl beginning in 2007
- ◆ Changing the number of schools in Class AA Administrative Regions to include the largest 124
- ◆ Reimbursement of \$600,000 to 360 schools that participated in state athletics and fine arts tournaments
- ◆ Approval of a three-class golf tournament beginning in 2008
- ◆ State tournaments for boys' lacrosse and girls' lacrosse

The Board of Directors has issued their *tenth* Annual Report in the format you are currently reading; developed goals which were in line with the Strategic Plan; discussed competitive sections and travel budgets and modified the placement and enrollment process for all activities; continued the expansion of the Web site to ensure more immediate and accurate communication to the member schools and the general public; sponsored the Hall of Fame, Triple "A", Spotlight on Scholarship, Challenge Cup, and ExCEL recognition programs; and solicited input from member schools at Area Meetings.

The 2007-08 school year will bring challenges to member schools and activity participants as travel budgets and financial constraints cause school boards and parents to more closely evaluate their available resources. The Board of Directors and League staff will work with allied organizations to support the values students receive from participation in educational athletic and fine arts programs and will continue to provide leadership for school personnel throughout the state.

THANK YOU for the unending support you provide to the thousands of athletic and fine arts participants who are served by the activity programs in your school.

A handwritten signature in dark ink that reads "Jaime C. Sherwood".

Jaime Sherwood, Board of Directors
President, 2006-07



Mission

The Minnesota State High School League is a non-profit, voluntary association of public and private schools with a history of service to Minnesota youth since 1916. Its mission is to provide educational opportunities through interscholastic athletic and fine arts programs for students and leadership and support for member schools.

We believe:

- ◆ Participation in school activity programs is a privilege and not a right.
- ◆ Sportsmanship needs to have a constant presence in all school-based activity programs.
- ◆ Students should have an equal opportunity to participate in all activities offered by their school.
- ◆ Ethical behavior, dignity and respect are non-negotiable.
- ◆ Student participants who choose to be chemically free must be supported.
- ◆ Collaborative relationships with parents enhance a school's opportunity to positively impact student success.
- ◆ Academic priorities must come before participation in athletic or fine arts activities.
- ◆ Positive role models and an active involvement in a student's life by parents and others are critical to student success.
- ◆ High school activity programs are designed for student participants and adults must serve in a supportive role.
- ◆ The success of the team is more important than individual honors.
- ◆ Compliance with school, community and League rules is essential for all activity participants.
- ◆ Participation in school-sponsored activities must be inclusive, not exclusive.
- ◆ Ethical behavior, fairness, and embracing diversity best serve students and school communities.

History

The Minnesota State High School League was first organized in 1916 by a group of local superintendents. Then called the State High School Athletic Association, its mission was to promote amateur sports for boys and establish uniform rules for interscholastic contests.

In 1929, the Association broadened its scope to include speech and debate, and the Association's name changed to the Minnesota State High School League.

In 1960, the League incorporated under Minnesota Law as a non-profit, voluntary association of high schools. The League added music to its list of sponsored activities in 1965 and girls' athletic programs in 1969.

In 1973, Minnesota statutes provided that membership in the League is available to any high school in Minnesota that satisfied the compulsory attendance requirement under Minnesota Law. Thirty-seven non-public schools joined the League the next year.

During the 1990's the League became the first activity association in the nation to sponsor girls' ice hockey and adapted athletic programs for students with disabilities.

For more than 90 years, the Minnesota State High School League, through the cooperative efforts of its member schools, has provided educational opportunities for students through participation in athletics and fine arts activities.

Services to Member Schools

The Minnesota State High School League is a service organization providing its membership with publications, training opportunities, recognition programs, tournaments, rules interpretation meetings, and many other services that assist in the administration of interscholastic activities.

The League serves students first and foremost, providing educational experiences through involvement in athletics and fine arts activities. Interscholastic competition leads to state tournament competitions which are conducted by the League. Students also are acknowledged through several recognition programs for academic achievements, community service, and leadership.

The League serves its member schools by providing competitive environments with rules that support fair play, dignity and respect. School personnel, from elected local school board members to superintendents, from principals to

athletic/activity directors, are invited twice annually to area meetings throughout the state to share concerns and discuss issues.

The League serves coaches and officials, both integral to equitable competition, by providing educational and training opportunities. Coaches can learn about the science of sport, first aid, and the rules that govern both student eligibility and the activities they oversee. Officials are provided with annual meetings to review contest rules and are provided opportunities for further training in the mechanics of officiating.

The League serves the public in general as a complimentary extension of the classroom by providing activities for high school youth that teach lifelong lessons and develop responsible citizens. Communication with the general public takes many forms, not the least of which is a comprehensive Web site – www.mshsl.org.

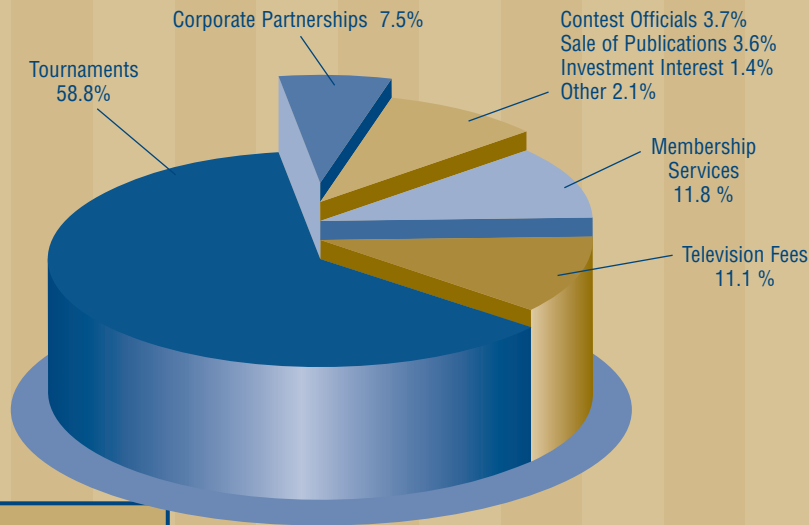
League Finances

The Minnesota State High School League is a non-profit organization. The League operates on an annual budget of about \$7.1 million and receives no funding from the state legislature.

Revenues generated from tournament ticket sales, broadcast rights fees, and other tournament related-income make up the majority of the League's operating budget. The remaining portion of the budget comes from corporate sponsorships, publication sales, registration fees, and investment income.

At the end of each fiscal year, revenue remaining after all expenses are paid, is distributed to member schools fortunate enough to have competed at the state level. Those shares of revenue during the past 10 years have averaged \$641,000 each year, an average of \$1,780 per school.

The Office of the State Auditor for Minnesota audits all financial records of the League. The audit report is mailed to League member schools.

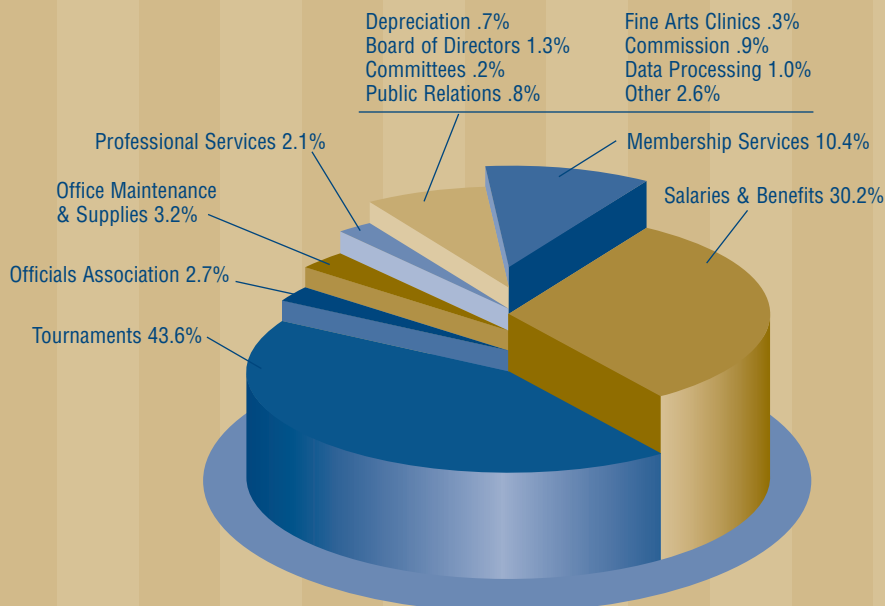


The League pays for and member schools receive—

- ◆ Catastrophic insurance coverage for student activity participants
- ◆ Tournament liability insurance
- ◆ Educational and training opportunities for coaches and contest officials
- ◆ Advisory committees that provide direct information to the Board of Directors
- ◆ Certificates, trophies and medals for students participating in League tournaments
- ◆ Student recognition programs
- ◆ Postage for mailing agendas, minutes of meetings, rule books, newsletters and requested information to member school and to anyone who requests to be on League mailing lists.

REVENUES \$7,260,496

Tournaments \$4,268,853
 Television Fees \$800,000
 Membership Services \$859,885
 Sale of Publications \$259,648
 Contest Officials Registration \$268,268
 Investment Interest \$102,859
 Corporate Partnerships \$543,620
 Other \$157,363



EXPENSES \$7,080,780

Tournaments & School Reimbursements \$3,084,320
 Salaries & Benefits \$2,145,760
 Professional Services \$145,963
 Membership Services \$739,649
 Office Maintenance & Supplies \$233,798
 Other \$184,674
 Board of Directors \$90,112
 Committees \$16,344
 Officials Associations \$187,796
 Depreciation \$46,418
 Fine Arts Programs \$17,200
 Public Relations \$53,878
 Corporate Partnership Commission \$61,648
 Data Processing \$73,220

COMPARATIVE SCHEDULE OF TOURNAMENT REVENUES AND DIRECT EXPENSES FOR THE YEARS ENDED JULY 31, 2007 AND 2006

Tournament	2007**			2006*		
	Revenues	Direct Expenses	Excess (Deficiency) of Revenues Over Direct Expenses	Revenues	Direct Expenses	Excess (Deficiency) of Revenues Over Direct Expenses
Baseball	100,003	73,517	26,486	103,804	75,127	28,677
Boys' Basketball	542,668	207,094	335,574	494,238	211,345	282,893
Girls' Basketball	280,279	186,145	94,134	271,446	184,594	86,852
Cross Country Running	14,045	28,709	(14,664)	13,597	30,686	(17,089)
Football	813,257	296,262	516,995	896,963	290,160	606,803
Golf	5,760	33,312	(27,552)	5,272	43,305	(38,033)
Girls' Gymnastics	39,700	94,373	(54,673)	47,917	88,853	(40,936)
Boys' Hockey	1,177,391	289,081	888,310	1,167,168	278,443	888,725
Nordic Ski Racing	3,099	23,757	(20,658)	2,835	20,283	(17,448)
Alpine Skiing	2,923	21,396	(18,473)	3,014	19,818	(16,804)
Soccer	160,271	101,320	58,951	172,964	102,601	70,363
Girls' Softball	56,363	52,039	4,324	54,496	48,282	6,214
Boys' Swimming & Diving	29,305	38,186	(8,881)	45,043	44,637	406
Girls' Swimming & Diving	50,620	49,327	1,293	51,147	46,093	5,054
Boys' Tennis	3,910	29,839	(25,929)	3,464	29,905	(26,441)
Girls' Tennis	5,045	32,056	(27,011)	4,464	31,084	(26,620)
Track and field	121,862	117,560	4,302	104,653	119,200	(14,547)
Girls' Volleyball	142,875	112,230	30,645	140,648	108,666	31,982
Wrestling	322,401	197,941	124,460	390,352	190,271	200,081
Synchronized Swimming	0	1,142	(1,142)	0	540	(540)
Adapted Soccer	6,568	16,549	(9,981)	8,046	15,695	(7,649)
Adapted Floor Hockey	9,526	17,346	(7,820)	9,706	15,854	(6,148)
Adapted Softball	6,111	15,666	(9,555)	5,930	15,374	(9,444)
Adapted Bowling	406	12,064	(11,658)	392	10,770	(10,378)
Debate	186	15,066	(14,880)	198	14,712	(14,514)
Speech	5,022	46,604	(41,582)	4,343	42,449	(38,106)
One Act Play	16,586	17,025	(439)	13,720	16,958	(3,238)
Girls' Hockey	185,606	161,109	24,497	137,644	120,493	17,151
Cheerleading	0	6,447	(6,447)	0	6,889	(6,889)
Girls' Dance Team	143,501	84,640	58,861	127,831	82,049	45,782
Lacrosse	23,598	19,531	4,067	0	1,015	(1,015)
Badminton	0	645	(645)	0	0	0
Visual Arts	0	163	(163)	0	591	(591)
Total	4,268,887	2,398,141	1,870,746	4,281,295	2,306,742	1,974,553

The tournament direct expenses shown above include only those expenses that are directly associated with conducting MSHSL tournaments (i.e. personnel and site and program costs). School expense reimbursement and indirect costs such as membership services, salaries and benefits, postage, and other general administrative costs of the MSHSL have not been allocated to any specific tournaments and therefore are not included in the schedule shown above.

* From State Auditor's Report

** End of year balance on League financial statements

A 10-YEAR COMPARISON OF SCHOOL REIMBURSEMENTS FOR TOURNAMENT PARTICIPATION

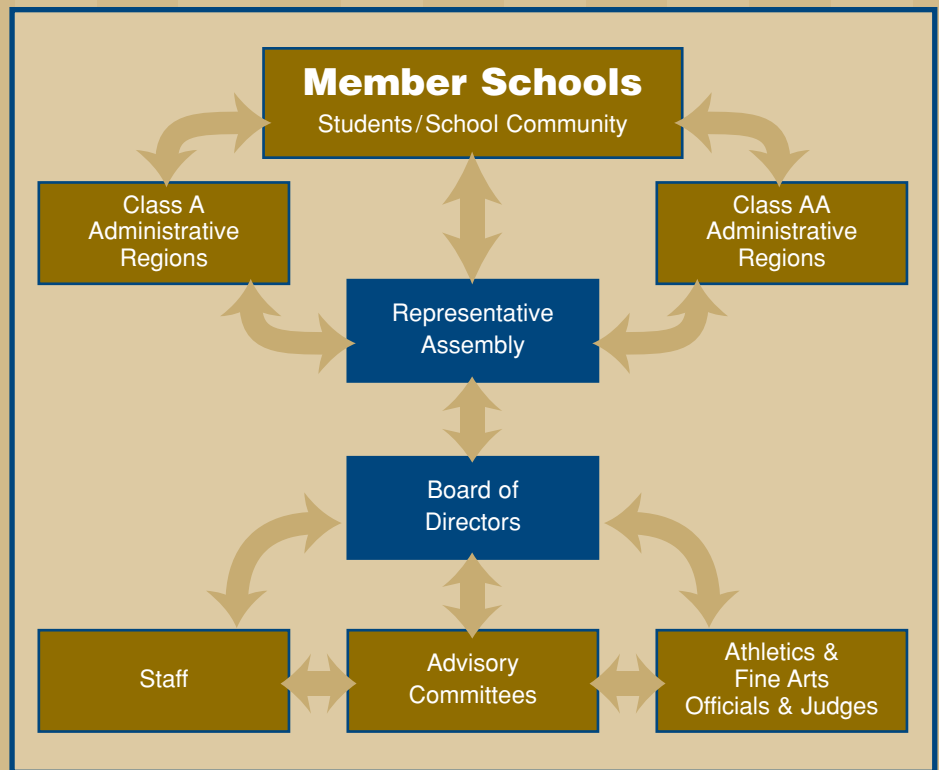
	Number of Schools Participating	Total Amount Returned	Average Per School
1997-98	358	800,394	2,236
1998-99	357	918,296	2,572
1999-00	352	650,581	1,848
2000-01	357	671,141	1,879
2001-02	359	476,296	1,326
2002-03	360	256,233	712
2003-04	357	669,084	1,874
2004-05	364	671,022	1,843
2005-06	365	600,689	1,645
2006-07	360	692,930	1,925

Grassroots Governance

As a non-profit, voluntary association of public and private schools, the League is structured to listen to and respond to its members. Individual school boards decide every year to join the League. Each member school and its composite constituencies—students, parents, coaches, administrators, and school board members—have a voice at the grassroots level known as an administrative region.

A region committee comprised of representatives from League member schools makes decisions about how subsection and section competition is conducted. Each of these 16 committees—eight for schools with an enrollment of fewer than 500 students in grades 10–12 and eight for schools with an enrollment of 500 or more—also elect or appoint three people to serve on the Representative Assembly which acts on bylaws that govern eligibility and the administration of League activities. These committees also review proposed changes to bylaws before consideration by the Representative Assembly. They also report to the 20-member Board of Directors, which oversees the administration of all League activities and structures the conduct of state tournaments.

Activity Advisory committees provide direct information to the Board of Directors about activity programs. These committees—there's one for each activity the League sponsors



—meet once a year to review and recommend changes to athletic and fine arts programs. Activity associations appoint people to serve on the advisory committees. Committee members generally serve two-year terms.

The intent is to involve everyone from students and their parents and coaches to school administrators and their elected school board members, in the League's decision-making process.

2006-07 Bylaw Changes

Forty-eight people, representing the League's membership, comprise the Representative Assembly, the League's legislative body. The Assembly meets annually to consider all bylaw proposals that come from League member schools, region committees, the Board of Directors and state athletics and fine arts associations.

League bylaws govern the addition of new activities, season lengths, number of contests, eligibility standards, and amateurism requirements of student athletes and fine arts participants. Bylaws also set requirements for conduct, enrollment, and they give direction to scholarship, student transfers, practices, and many other areas important to the sound administration of high school athletic and fine arts programs.

During the 2006–07 school year, the Representative Assembly unanimously approved modifications to the Transfer and Residence bylaw that—

- ◆ Allow transfer students to be eligible for varsity competition if:
 - 1) the student is an incoming 9th grader for the first time; 2) the student's parents move from one public school district attendance area to another public school district attendance area and establish and occupy a residence in the new public school district attendance area; 3) the student's residence is changed pursuant to a child protection order placement in a foster home, or a juvenile court disposition order; or 4) the student's parents are legally divorced and

Essentially, if a student transfers to a public or non-public school and does not meet the conditions identified for maintaining full eligibility, the student will be ineligible for varsity competition at the new school for one calendar year.

have joint physical custody, that student can move one time from one custodial parent to another custodial parent.

- ◆ Eliminated the "One Time Free Move" option. This option allowed a student athlete to maintain varsity eligibility after enrolling in the 9th grade for the first time and transfer once between Minnesota schools as long as the transfer took place during the summer.
- ◆ Changed the varsity competition suspension for ineligible transfer students to one year.
- ◆ Allow students who move into Minnesota with his or her family from another state or country to be fully eligible at the first school the students attend in Minnesota.
- ◆ Allow a student who is determined to be ineligible for varsity competition for one year at the new school to choose to remain varsity eligible for one year at the former school.

2007-08 MSHSL Calendar of Events

FALL

Girls' Tennis	Oct. 24-27	AA – Baseline Tennis Center, Minneapolis A – Reed-Sweatt Family Tennis Center, Minneapolis
Boys' & Girls' Soccer	Oct. 24-26 Oct. 29, 30, Nov. 1	Quarterfinals – Various Sites Semifinals & Finals – Metrodome, Minneapolis
Boys' & Girls' Cross Country Running	Nov. 3	St. Olaf College, Northfield
Girls' Volleyball	Nov. 8-10	Xcel Energy Center, St. Paul
Adapted Soccer	Nov. 9-10	Stillwater Area High School
Football	Nov. 8-10, 15-16, 23-24	Quarterfinals – Various Sites Semifinals & Prep Bowl – Metrodome, Minneapolis
Girls' Swimming & Diving	Nov. 15-17	University Aquatic Center, Minneapolis

WINTER

Debate	Jan. 18-19	Rosemount High School
One Act Play	Feb. 7-8	The O'Shaughnessy, College of St. Catherine. St. Paul
Boys' & Girls' Alpine Skiing	Feb. 14	Giants Ridge, Biwabik
Boys' & Girls' Nordic Ski Racing	Feb. 15	Giants Ridge, Biwabik
Girls' Dance Team	Feb. 15-16	Xcel Energy Center, St. Paul
Girls' Hockey	Feb. 20-23	Xcel Energy Center, St. Paul
Girls' Gymnastics	Feb. 22-23	Roy Wilkins Auditorium, St. Paul
Wrestling	Feb. 27-29, March 1	Xcel Energy Center, St. Paul
Boys' Swimming & Diving	Feb. 28-29, March 1	University Aquatic Center, Minneapolis
Boys' Hockey	March 5-8	Xcel Energy Center, St. Paul
Girls' Basketball	March 12-15	Target Center, Minneapolis & Williams Arena, Minneapolis
Adapted Floor Hockey	March 14-15	Bloomington Jefferson High School
Boys' Basketball	March 26-29	Target Center, Minneapolis & Williams Arena, Minneapolis

SPRING

Speech	April 18-19	South St. Paul High School
Adapted Bowling	May 16	Brunswick Zone, Eden Prairie
Adapted Softball	May 30-31	Coon Rapids High School
Boys' & Girls' Lacrosse	TBD	Hopkins & Wayzata High Schools
Boys' & Girls' Golf	June 3-6	AAA – Bunker Hills, Coon Rapids AA – TBD A – TBD
Boys' Tennis	June 3-6	TBD
Girls' Softball	June 5-6	Caswell Park, North Mankato
Boys' & Girls' Track & Field	June 6-7	Hamline University, St. Paul
Baseball	June 12-13	AAA – Midway Stadium, St. Paul & Dick Siebert Field, Minneapolis AA – Dick Putz Stadium & Joe Faber Fields, St. Cloud A – Chaska Athletic Park & Mini Met, Jordan

Photography Credits: Minnesota Prep Photo / www.MnPrepPhoto.com