

ANNUAL REPORT

Calendar Year 2006

MID-MINNESOTA DEVELOPMENT COMMISSION

*Serving the People of Kandiyohi, McLeod,
Meeker, and Renville Counties
Since 1974.*



333 Sixth Street Southwest, Suite 2
Willmar, MN 56201-5615

E-mail: mmrdc@mmrdc.org
Web Site: www.mmrdc.org

Phone: 320-235-8504
Toll Free: 800-450-8608
Fax: 320-235-4329



MID-MINNESOTA DEVELOPMENT COMMISSION

Serving the People of Region Six East



DuWayne Underthun

To Those We Serve:

We are pleased to provide you with the 2006 Annual Report of the Mid-Minnesota Development Commission (MMDC). This report describes achievements of the Commission and its staff in carrying out the Commission's mission. The report highlights the programs and projects of the MMDC during calendar year 2006. The enclosed year-end financial data is for fiscal year 2006 (July 1, 2005 to June 30, 2006).

2006 has been another year full of activities for every one of the Commission's departments. Technical assistance has been given to many of the Region's local units of government, as well as to some organizations and businesses. This report highlights the major activities of the Commission during 2006.

In December of 2006, the Mid-Minnesota Development Commission delivered a required "Five Year Performance Assessment" to the Minnesota Legislative Reference Library. The assessment summarized key activities undertaken by the Commission from 2002 through 2006, as well as highlighted the results of the stakeholder survey the Commission conducted towards the end of 2006. Through this assessment the Board of Commissioners determined that the Commission has fulfilled the purpose of the Regional Development Act, and that its future existence is "in the public welfare and interest."

The stakeholder survey was mailed out to 417 individuals, including mayors and city council members, township chairpersons, County Commissioners and other individuals that work for various businesses and agencies the Commission works with. There were 114 surveys returned for a 27.3 percent return rate. The Survey response showed that, overall, over 80 percent were of average satisfaction or above for both quantity and quality of work. Approximately five percent of the respondents were not satisfied with the role of the Commission. Very similar results were found throughout the survey. In general the vast majority of those answering the survey thought that the Commission served an important role within the Region.

One area that the survey shows the Commission needs to improve is with better communicating to our stakeholders and the general public on what type projects we are able to assist local governments, agencies, organizations, and businesses with. We need to take the time to let persons in the Region know what projects we are working on and what has been accomplished.

With revenues exceeding expenditures during fiscal year 2006, the Commission has been able to set up two new reserve accounts that will be a benefit to the Region Six-East. The Commission has designated \$30,000 for a "Local Services Assistance Fund" and \$20,000 for "Regional Planning Fund." It is hoped that these two accounts will leverage other funding to allow the Commission to provide staff assistance to various plans and studies that need the financial assistance in order to be done.

Respectfully yours,

DuWayne Underthun

DuWayne Underthun
Chair

Donn Winckler

Donn Winckler
Executive Director

...over 80 percent
were of average
satisfaction or
above for both
quantity and quality
of work.



Donn Winckler

State Certified Building Inspection Services

Butch Schulte Retirement



This past year has seen the retirement of long-time employee Butch Schulte from his role as Director of Building Inspection Services. The Board of Commissioners passed a resolution in August of 2006 that conveyed their appreciation and thanks to Mr. Schulte for his numerous years of dedicated service with the commission and to wish him a happy retirement.

During Mr. Schulte's 17 years of service for the Commission, he has always demonstrated outstanding service to the Commission's communities and other clientele. He has successfully administered numerous Small Cities Development Program grant applications that have resulted in hundreds of low-income households being able to afford housing repairs and safer housing conditions.

Mr. Schulte has built and maintained a successful Building Inspections Department for the Commission and brought needed service to a number of jurisdictions that have adopted the State Building Code, along with providing a variety of other necessary inspection services to Region Six-East communities.

State Certified Building Inspection Services

The Mid-Minnesota Development Commission (MMDC) has one fully certified State Building Official on its staff that provides inspection and plan review services for communities that have adopted the State Building Code.



The Commission's Economic Development Director is also a fully certified State Building Official.

(Continued on page 12)

Administering the Minnesota State Building Code

Mid-Minnesota Development Commission provides inspection services and plan review services for communities that have adopted the State Building Code.

Administering the Minnesota State Building Code involves the following activities:

- Responding to questions, concerns, and other inquiries about building code requirements.
- Issuing permits, collecting fees, answering inquiries about particular projects and related activities.
- Reviewing the building plans for compliance with applicable requirements of the Building Code.
- Carrying out the field inspections for each building project. The number of field inspections varies from a couple of field inspections to many, depending on the project. Most of the building inspectors' time is devoted to this activity. Associated activities include notifying builders of problems, arranging for corrective measures, and so on.
- Enforcement activities related to building without required permits and issues that arise when permits are not in compliance.
- Preparing reports required as part of the Building Code.

Transportation Planning

The Mid-Minnesota Development Commission (MMDC) receives an annual grant from the Minnesota Department of Transportation, matched with the local tax levy, to provide transportation planning services within the Region's four counties and to participate in the Southwest Minnesota Area Transportation Partnership (ATP) process. The Transportation Advisory Committee (TAC) makes recommendations to the Commission on these transportation activities.

The Commission annually participates in the Area Transportation Partnership's decision-making process of which projects receive Federal funding through the State's Transportation Improvement Program. MMDC's voting members on the ATP are Sheldon Nies and Ron Kutzke. The Commission holds an annual public informational meeting on the proposed Area Transportation Improvement Program. Staff provides assistance for this activity, as well as serving on an ATP Committee that makes Enhancement Project funding recommendations.



The Commission has provided assistance to the Highway 15 Coalition. The Coalition was formed, with MMDC assistance, to work towards raising awareness of the access, safety, and capacity challenges facing the Highway 15 Corridor. In 2006, work continued on getting the Coalition up and running. One of the primary first goals of the Coalition is to seek a Congressional allocation of dollars to be able to conduct a corridor study to identify specific safety and access needs along the corridor.

Kandiyohi County is conducting a roadway jurisdictional study to be completed in 2007. The Commission is assisting the County with this study. The project involves the examination of each roadway segment and objectively determining which level of jurisdiction should logically own and maintain it. Roadway significance, tax capacity, and spacing, among other variables, are all being examined to make the determinations.

The Commission assisted Mn/DOT with updating the Roadway Functional Classification System within the Region. Staff worked with County and City Engineers in recommending changes to the system. Mn/DOT is expected to develop a statewide draft functional classification early in 2007 for review, before it becomes a final document.

Another major transportation project that was completed in 2006 is Meeker County's Pedestrian and Bicycle Trail Plan. Staff assisted the Meeker County Trails Committee in preparing this plan. The plan sets in place goals, policies, and implementation steps for future trails. Major trail corridors are identified as an ideal countywide future trail network to work towards. In addition, the plan is also intended to provide guidance to those groups and localities interested in pursuing the construction of a new trail or the expansion of an existing trail.

(Continued on page 13)



Economic Development Assistance and Revolving Loan Fund



Les Nelson

The Mid-Minnesota Development Commission's economic development program is designed to assist local units of government and business in the Region with activities that create or support the creation of jobs and investment. Program activities are funded by a grant from the U.S. Department of Commerce, Economic Development Administration, and the local tax levy. The Commission operates a \$1.4 million Revolving Loan Fund program within the Region's four counties. Two separate advisory committees assist the Commission with the economic development activities. The first committee provides recommendations to the Commission on the priorities and goals of economic development in the Region. The second advisory committee provides review and recommendations on the Commission's Revolving Loan Fund program.

(continued on page 12)



Economic Development Activities During Past Fiscal Year:

- Provided technical assistance on the State of Minnesota Job Opportunity Building Zone (JOBZ) Initiative.
- Assistance was provided to the Renville County HRA for rehabilitation projects and Section Eight Audit inspections.
- Technical assistance was provided to the Douglas County HRA regarding workforce housing issues.
- Authored annual update of the Comprehensive Economic Development Strategy as required by the federal Economic Development Administration (EDA).
- Received invitation and authored Economic Development Planning Grant Application. The application was approved and funded.
- Staff served as a member of the Kandiyohi County Economic Development Partnership finance Committee.
- Staff gave a presentation to a business capital seminar for Kandiyohi County.
- Staff prepared for changes to the Regulations at the Federal Economic Development Administration by attending a forum at the EDA Chicago Regional Office. Changes include District Governing Board membership modifications.
- Approval was given to two Commission Revolving Loan Fund loans and the RLF received ongoing management.
- Staff provided technical assistance to the City of Hutchinson-Housing Redevelopment Authority and City of Willmar-HRA for home rehabilitation efforts.
- Staff served as an ex-officio member of Kandiyohi County Economic Development Partnership Operations Board.
- Staff provided technical assistance to the Meeker County Development Corporation in connection with liquidation of real estate collateral, on an RLF loan, to a new company.
- Commission partnered with the State of Minnesota Department of Employment and Economic Development regarding an "Enterprise Network Systems Analysis" for the region.





Area Agency on Aging

The Minnesota River Area Agency on Aging (MnRAAA) is dedicated to helping older people in Southwest Minnesota, which includes Kandiyohi, McLeod, Meeker, and Renville Counties, lead comfortable, independent lives. MnRAAA is governed by a Joint Powers Board of the four Regional Development Commissions in a 27 county region of Southwest Minnesota. The goals of the Area Agency on Aging (AAA) are to enhance service offerings and ensure that the needs of the sen-



Berit Skurdahl, Outreach Specialist, presenting Home Injury Control Project to Seniors

ior population are met. The 2006 AAA budget for MMDC is \$183,765. This budget supports program development, senior outreach specialist activities, health insurance counseling, and medication management assistance functions. Two staff positions conduct the function of the aging program. The positions are Program Developer and Senior Outreach Specialist.

Older Americans Act

The Older Americans Act (OAA) was reauthorized, amended, and signed into law by President Bush in December 2006. This action represents the 16th reauthorization of the OAA. The OAA promotes policy that ensures older

American's full participation in society and fosters the overwhelming desire to choose the homes and communities in which they wish to live throughout their later years. Other provisions to the OAA include:

- Support for State and community planning to address the long-term care needs of the baby boom generation.
- Greater focus on prevention and treatment of mental disorders.
- Outreach and service to a broader universe of family caregivers under the National Family Caregiver Support Program.
- Increased focus on civic engagement and volunteerism.
- Enhanced coordination of programs that protect elders from abuse, neglect and exploitation (*AoA website, March 20, 2007*).

Long Term Care Activities

Minnesota's goal to re-balance long-term care continues to be a primary focus for the Minnesota Board on Aging and Area Agencies on Aging. The development of services that support people who wish to remain in their own homes if they choose continues to be a priority for policymakers. The Gaps & Regional Analysis activities conducted throughout 2001-2003 provided a foundation for further work in 2006. Thus, the Transform 2010 Project was launched as a partnership between the MN Department of Human Services and the MN Board on Aging. The purpose of this partnership is to provide short



and long term goals to transform infrastructures and services that will support permanent changes to support the coming age wave in the state's population.

(Continued on page 10)

Community Development and Planning Technical Assistance

Hazard Mitigation Plans

The Commission is currently in the process of assisting the counties of Kandiyohi, Meeker, McLeod, and Renville with preparing Hazard Mitigation Plans. The Disaster Mitigation Act of 2000 established a national program for pre-disaster mitigation. Plans will be completed by the Spring of 2008.

Hazard Mitigation refers to any sustained action taken to reduce or eliminate the long-term risk to human life and property from hazardous conditions. These plans are needed to be in place and approved in order for cities, townships, and counties to be eligible to receive any grant money from disasters.

A hazard mitigation plan will help in the following ways:

- Allows a community to plan for a disaster before it occurs.
- Helps reduce risk and minimize impact from future events.
- Breaks the cycle of disaster – repair – disaster in a community.

Plans that are in place will provide for a faster recovery process when a disaster does occur. The principal components of the plans are a community profile; a hazard profile, which identifies hazards that could impact a community; a risk assessment; and goals and strategies. Public involvement has been encouraged throughout the development of these plans.

Environmental Reviews

During the past year the Commission has prepared four Environmental Assessment Worksheets (EAWs), and one Environmental Impact Statement (EIS) for projects located in Kandiyohi and Meeker Counties. Minnesota's Environmental Review Program is designed to avoid and minimize damage to the state's environmental resources caused by public or private actions. Certain pro-

posed projects are required to undergo special review procedures prior to obtaining approvals and permits otherwise needed.

“The program assigns a unit of government – the Responsible Governmental Unit – to conduct the review using standardized public process designed to disclose information about environmental efforts and ways to minimize and avoid them.” The EIS and the EAW are the two different review documents that are used in this program. The EIS is a thorough study of the project's environmental impacts, while the EAW is prepared to determine whether an EIS should be prepared. The primary purpose of the EAW is to “provide information needed to determine whether the project has the potential for significant environmental effects; it also provides permit information, informs the public about the project and helps identify ways to protect the environment.” Environmental reviews are not a means to approve or disapprove a project, but is simply a source of information to guide approval decisions. If an EIS is determined necessary, the time and costs associated with completing the task are significant. It is common for an EIS to cost over \$100,000. The project's proposer is responsible for the “reasonable costs” for scoping, preparing and distributing an EIS, as well as the costs associated with preparing an EAW.

Note: Quotes are from the Minnesota Environmental Quality Board's Guide to Minnesota Environmental Review Rules.

(Continued on page 14)



Future Westrich RV Campground

Geographic Information Systems (GIS)

In 2005, MMDC hired its second full time GIS staff person to keep pace with the demand for these Commission services. Through the years of operation, the Commission has always provided a means of assisting clientele with their mapping needs. The Commission began offering GIS mapping services back in 1996. Since that time the Commission has made over 500 specialty maps for a variety of clients. By moving into GIS, the Commission offers a much more sophisticated level of computer map-making that is tied to databases. Thus, not only can staff quickly and easily update maps, but can use the software program to make in-depth analysis. GIS is a “computer-based tool for mapping and analyzing things that exist and events that happen on earth. GIS technology integrates common database operations such as query and statistical analysis with

the unique visualization and geographic analysis benefits offered by maps.”

GIS has become widely used in recent years. There are limitless applications for where and how it can be used. Major areas of application include: urban planning, zoning, plan reviews, transportation planning, environmental impact and management analysis, vehicle routing, public facilities management, and business location analysis to name just a few.

The Commission has purchased software that will allow staff to set up Internet mapping within the Region. The ability to publish spatial data and maps to the Internet allows MMDC and each county in the Region to create dynamic web sites reflecting certain mapping purposes.

From two Board of Water and Soil Resources (BWSR) grants the Commission helped receive in 2006, staff have digitized all the drainage ditches in Renville County and the Buffalo Creek Watershed District (BCWD) during 2006. These \$25,000 BWSR Challenge grants were written by staff successfully for Renville County and BCWD in 2005 for digitizing both the surface and subsurface ditches within the county.

MMDC continued to work with both Meeker County and Pipestone County in 2006 with creating county parcel maps. These county parcel map projects are very time consuming endeavors.

(Continued on page 13)



One of MMDC's dual monitor GIS workstations and the new plotter

GIS Activities:

- Meeker and Pipestone County Parcel Maps
- BWSR grants obtained and work performed with drainage system inventory and map for Renville County and Buffalo Creek Watershed District.
- Buffalo Creek and Middle Fork Crow River Watershed District Maps for both plans
- Web Mapping Site for Buffalo Creek Watershed District detailing numerous data.
- Web Mapping Site for Meeker and Pipestone Counties to access Parcel data information.
- City of Litchfield Comprehensive Plan maps.
- Kandiyohi County maps detailing wind speeds for possible wind generation within the county.
- Hazard Mitigation maps for all four counties in our region.
- Meeker County's updated Land Use maps and the urban growth boundaries for the cities in Meeker County.
- Numerous mapping projects in support to MMDC's planning projects.
- A number of other smaller mapping projects for a variety of customers.
- GIS needs assessments for Kandiyohi and Meeker Counties.

The Mid-Minnesota Development Commission

GIS Mapping Program



The Green Lake Area
in the Late 1800s

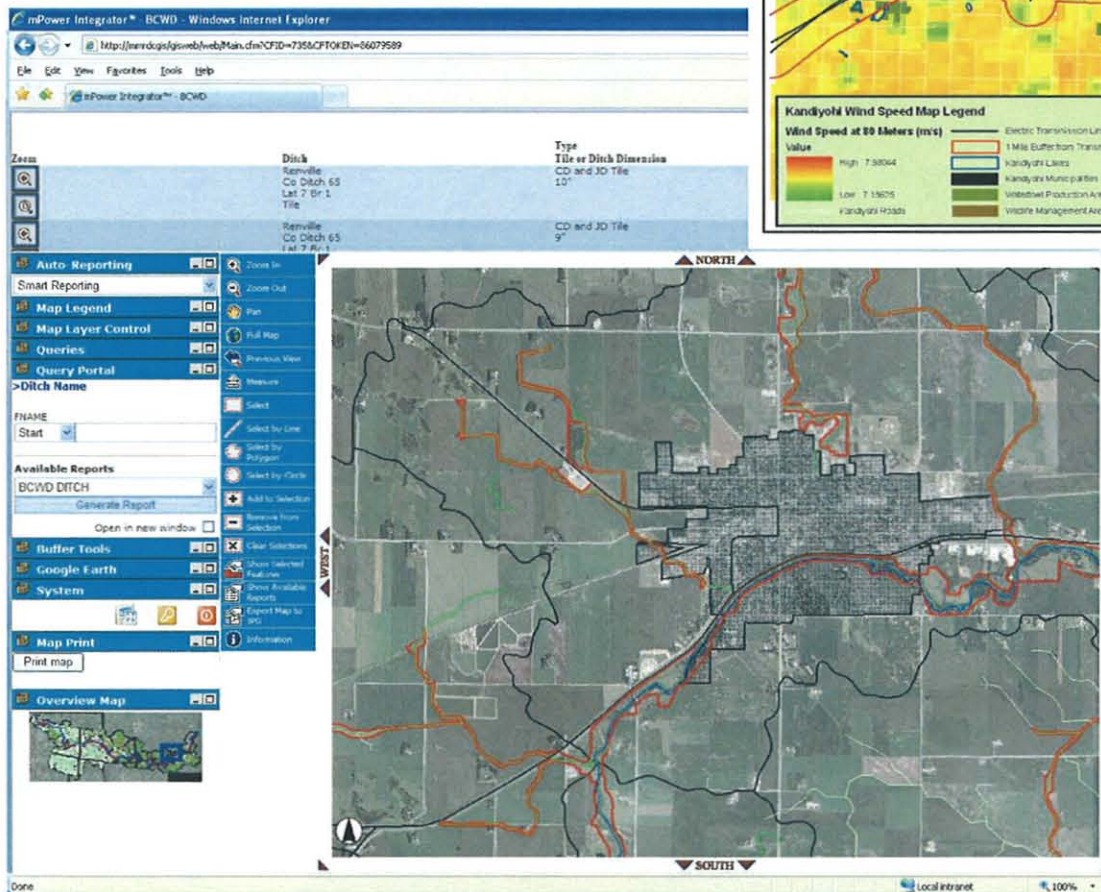
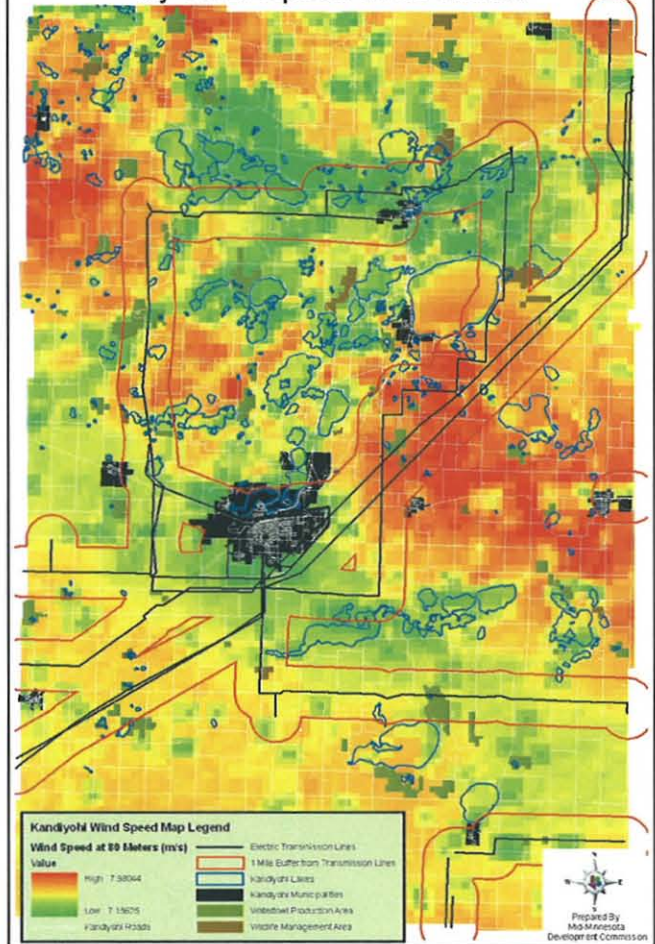


The Green Lake Area 2004

Professional GIS & Mapping Services

To the left is the cover of the Mid-Minnesota Development Commission's GIS Mapping Program brochure. Inside the brochure explains about GIS, MMDC's past GIS mapping, current GIS mapping, and future GIS mapping needs that MMDC can help communities with. The pictures to the right and lower left are examples of what our GIS department can do. The map to the right shows Kandiyohi County's wind resource by wind speed at 80 meters.

Kandiyohi County Wind Resource by Wind Speed at 80 meters



The picture to the left shows the Integrator software used for Web Mapping. This example is of the Buffalo Creek Watershed District (BCWD) shown on the map is the City of Glencoe with various ditches and riparian buffers shown. The web mapping software will allow maps and data to be published to the Internet and accessible for anyone with access to the web.

(Continued from page 6)

Area Agency on Aging

Other AAA Activities

Staff also provides a wide variety of technical assistance to various aging organizations and causes. Some of the activities of the past fiscal year include:

- Conducted numerous Medicare Part D Plan Comparisons throughout the region for consumers during the annual open enrollment period that began November 15 and ended December 31. There were a total of 773 client contacts made.
- Twenty-three (23) volunteers provided 1567 hours of counseling and education throughout the year.
- Made numerous presentations about AAA services including information on health insurance counseling topics such as Medicare Approved Drug Discount Cards and the Senior LinkAge Line™ system.
- Participated in the Life Connections Expo, MN State Fair, and other area Senior Health Fairs.
- Participated on the Advisory Committee of the West Central Integration Collaborative.
- Co-sponsored 5th Annual Caregiver Event held in Willmar, October 2006.
- Provided grant writing assistance for Community Service Development grants to various organizations. Buffalo Lake Health Care Center received funding to add five (5) assisted living units onto existing building.
- Secured Alzheimer's Demonstration Grant for region; focus on consumer directed model of service and increasing linkages between physicians, family caregivers, and community based services. Project sites are located at Grove City CARE and Atwater Living at Home Block Nurse programs.
- Facilitated Eldercare Development Partnership (EDP) Long Term Care Coordinating Council for 16 counties. Goals focused on supporting community development of services to support elderly persons living independently. Secured grant funding for FY 2007 continuation of EDP funds.
- Maintained the Memorandum of Understanding with Rice Memorial Hospital Health Insurance Counseling Program to share volunteer and training activities.
- Facilitated 7 Medication Management sessions with the help of area pharmacists.
- Surveyed fifty-five home care agencies regarding use of telehealth equipment.



Ann Bosch, ACA Board member, talks with Life Connections 2007 attendee, Veronica Lindquist.

Aging Advisory Council (ACA)

The AAA has an advisory council comprised of eight members and chaired by Richard Brooks from rural Darwin. The ACA meets up to seven times per year and has a responsibility for providing the link between MNRAAA, older adults, and their local communities. An additional function of the ACA is to establish Title III funding priorities, review applications, and make recommendations for funding.

In 2006, MNRAAA established a Funding Task Force comprised of Advisory Council members representative of the four ACAs. This committee reviewed

(Continued on page 11)

(Continued from page 10)

Area Agency on Aging

applications, conducted interviews, and made final project awards to the Joint Powers Board. Although priorities and projects change, the following list of priority areas and projects funded during calendar year 2006 is representative of a typical year:

Transportation: Meeker, Kandiyohi, and Renville Counties

Legal Services/Education: Western Minnesota Legal Services

Congregate Dining and Home Delivered Meals: Nutrition Services, Inc. (NSI) provided congregate and home delivered meal service through 12/31/06.

Respite Care/Living at Home Block Nurse Program: Counties of McLeod and Meeker (Lutheran Social Services, Grove City CARE)

Medication Management: MNRAAA received a direct service waiver from the MN Board on Aging to provide this service in twelve counties throughout the Regions of 6E, 6W, and 8

ElderCare Development Partnership (EDP)

MMDC received state funds to address telehealth, transportation, chronic disease prevention, and nursing home transition activities throughout the 6E region and twelve additional counties in the MNRAAA planning and service area. A primary activity of this funding is to provide technical assistance to agencies seeking Community Service Development Grants from the Minnesota Department of Human Services, or other funding sources, and promote coordination among community based providers.

MNRAAA Joint Powers Board

- Established September 2004, with the signing of the Joint Powers Board Inter-agency Agreement. The objective of this agreement was to serve as the legal entity effective January 1, 2005 for the anticipated new AAA.
- During calendar year 2006, Ron Anderson, UMVRDC member was Chairperson. Richard Brooks and DuWayne Underthun served as voting members representing MMDC. Brooks' term ended June 30, 2006. Maureen Melgaard – Schneider began her term July 1.
- Dorothy Lindstrom was appointed as Ex-Officio member to represent the 6E



Pictures shown along side: Video Conference equipment and a digital stethoscope. In the corners are pictures of live interactive telehealth sessions which are reprinted with permission from Dr. Stuart Speedie of the University of MN and Karen Welle of the Minnesota Department of Health.



(Continued from page 3)

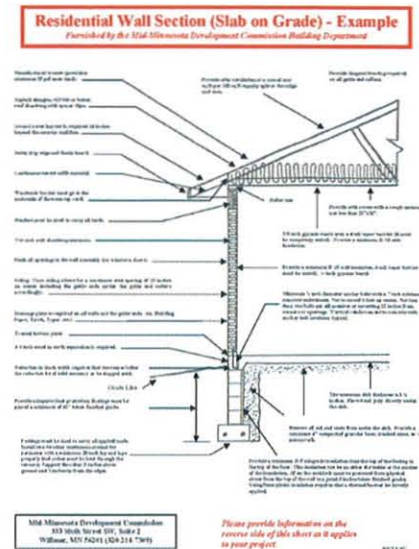
State Certified Building Inspections Services.

This gives the Department the added ability to use his assistance on occasions when work gets very busy. The State Building Code sets construction standards to assure the health, safety, comfort, and security of building occupants.

MMDC had contracts with 16 local units of government in providing this service during the calendar year. These jurisdictions included in Kandiyohi County: Atwater, Blomkest, Dovre Township, Kandiyohi, and Pennock; in McLeod County: Brownton and Stewart; in Meeker County: Cosmos, Darwin, Dassel, and Grove City; in Renville County: Bird Island, Fairfax, and Hector; in Wright County: Cokato; and in Stearns County: Richmond. The combined population for these jurisdictions served is over 15,000 persons.

Additional inspections are being made in the communities of Buffalo Lake, Sacred Heart, Hector, and Lake Lillian under the State Hazardous Building Act. Staff also provides accessibility inspections on occasion for Renville County.

Department staff have received training and provided service with lead-based paint inspections and risk assessments. U.S. Department of Housing and Urban Development regulations require these inspections in housing projects that they participate in. As few persons have both the training and equipment to provide this service in Southwest Minnesota, MMDC provides this service within and outside of our four-county Region. Analysis of asbestos concerns is another service the Department offers. Lastly, the Building inspectors provide housing rehabilitation inspection services for both the Hutchinson and Willmar HRAs.



(Continued from page 5)

Economic Development Assistance and Revolving Loan Fund.

A major portion of the staff time in economic development is devoted to technical assistance and administering the Revolving Loan Fund. Businesses, individuals, and governmental units can request and receive economic development technical assistance. Requests range from business assistance information to business finance analysis, infrastructure improvements, tax increment financing, and grant and loan writing.



The Revolving Loan Fund was established to assist businesses within the Region with gap financing. Businesses must be deemed viable and involve job creation or retention. Loans are made for working capital, land, buildings, and equipment. The amounts given out as loans range from \$5,000 to a maximum of \$100,000. The Revolving Loan Fund was originally capitalized primarily through Economic Development Administration funds, but also from funds from the four counties, the State of Minnesota, the Southwest Minnesota Foundation, and from the Mid-Minnesota Development Commission.

(Continued from page 4)

Transportation Planning

Commission staff was also active in the following transportation activities during the 2006 Calendar Year:

- Serving as a member of the Kandiyohi Area Transit (KAT) Operation Committee.
- Working with Mn/DOT to process functional classification changes on a case-by-case basis.
- Preparing comprehensive plans that include transportation components and issues.
- Attending RDC Transportation Planners meetings during the past year. These quarterly meetings allow the planners to share information and coordinate planning efforts.
- Participating in this past year's ATP Enhancement Committee project review process.
- Coordinating the Public Transit – Human Services Transportation Plan requirements. A \$20,000 grant was received to identify service gaps, barriers, prioritize needs, and identify strategies to address regional needs. This process was established as a prerequisite for application to Job Access and Reverse Commute Funding (JARC) or New Freedom Funds.



Census Assistance Reminder:

In order to help insure that the 2010 Census will count all the persons residing in your jurisdiction, your local units of government should participate in the Local Update of Census Addresses Program, known as LUCA. During July 2007 to January 2008, counties, cities, and townships will have the opportunity to register for the LUCA Program. Once registered, the Census Bureau will send them appropriate materials for their review. Jurisdictions that participate are given the opportunity to identify addresses that are missing from the Census database. Ensuring the Census has all your jurisdiction's addresses will help keep your population from being undercounted. As you are aware, undercounting population will negatively affect state and federal dollars your jurisdiction receives. We also need an accurate count of persons to help the state of Minnesota in terms of number of congressional seats it has.

(Continued from page 8)

Geographic Information Systems (GIS)

Staff has assisted the Middle Fork Crow River Watershed District in creating and finalizing their water management plan. Numerous maps and analysis had been put into the project in cooperation with the district to create a high quality water management plan. In addition to these projects, GIS staff have created a variety of maps for projects MMDC worked on. In particular, a number of maps have been created for EAW projects and All Hazard Mitigation Plan maps.

(Continued from page 7)

Community Planning

The Community Development Department is able to provide a wide array of community development planning projects and miscellaneous activities for local units of government. Typically this particular program area is not tied to any State or Federally funded program, but funded through service charges that are subsidized by the use of the Commission's general fund. Consequently, the Commission primarily provides technical services where they are most needed to local units of government.

Each year the staff offers assistance to local units of government on a wide range of services, including comprehensive land use plans, zoning and subdivision ordinances, ordinance codification, grant and loan writing, community surveys, public facilities planning, housing studies, and mapping projects, as well as many other technical services. As one of Minnesota's State Data Centers, the MMDC regularly provides businesses, non-profit agencies, private citizens, and units of government data from the Census and other informational sources free of charge. Geographic Information System (GIS) mapping services are highlighted in another section of this report.

In 2006, the Commission provided a wide variety of assistance to the Region's counties and cities. One of the largest projects was the continuation of work in developing Hazard Mitigation Plans for Kandiyohi, Meeker, McLeod, and Renville Counties. The Disaster Mitigation Act of 2000, passed by the United States Congress, requires that all states and counties prepare comprehensive All-Hazard Mitigation plans to identify risks and develop strategies to reduce losses. These plans are based on prioritizing the likelihood of damage to life and property from natural or technological disasters, then laying out steps to minimize those risks. In preparing these plans, staff is working with county, city, and township officials, emergency managers, police chiefs, fire

fighters, planners and others. Grants were received to conduct these plans. During the year, the Commission also started a Hazard Mitigation Plan for McLeod County.



City of Brownton

Community Planning/Development Activities:

- The Meeker County Comprehensive Plan Update was completed, as was draft Comprehensive Plans for the Cities of Litchfield and Brownton. The City of Litchfield is also currently updating its Zoning Ordinance.
- Infrastructure project assistance was given to the city of Blomkest.
- Assistance was given to the newly formed Middle Fork Crow River Watershed District, including the creation of a new Watershed Management Plan.
- The Commission assisted both Meeker and Kandiyohi Counties with four different EAWs.

Fiscal Report

Actual Figures Fiscal Year 2007

Original Budget Fiscal Year 2007

Revenues

Economic Development Administration	\$ 66,910		\$ 52,628
HHS - Area Agency on Aging	73,704		104,040
Department of Employment & Economic Development	2,467		--
Total Federal Sources		<u>\$ 143,081</u>	<u>\$ 156,668</u>
Agricultural Credit	\$ 24,607		\$ 23,100
Department of Transportation	50,000		50,000
Department of Transportation - Transit Study	1,142		18,400
HHS - Area Agency on Aging	63,178		66,783
Total State Sources		<u>\$ 138,927</u>	<u>\$ 158,283</u>
Property Taxes	\$ 212,200		\$ 212,128
Interest and Dividends	16,586		8,000
Inspection Services	210,654		216,000
Technical Assistance	93,965		113,600
GIS Mapping	43,412		99,624
Other	128,890		53,101
In-kind	65,316		55,994
Total Local Sources		<u>\$ 771,023</u>	<u>\$ 758,447</u>
Total Revenues		<u><u>\$ 1,053,031</u></u>	<u><u>\$ 1,073,398</u></u>

Expenditures

Personnel	\$ 565,657		\$ 621,486
Supplies & Printing	12,881		11,397
Communications	19,617		22,146
Capital Outlay	16,696		4,100
Services	26,054		8,595
Volunteer Services & Other Uses	6,371		6,545
Travel & Training	46,970		53,385
Commission	10,595		21,751
In-kind	47,309		55,994
Indirect	196,963		217,785
Total Expenditures		<u><u>\$ 949,113</u></u>	<u><u>\$ 1,023,184</u></u>

Mid-Minnesota Development Commission

333 Sixth Street Southwest, Suite 2
Willmar, MN 56201-5615

E-mail: mmrdc@mmrdc.org

Web Site: www.mmrdc.org

PRESORT STANDARD
U.S. POSTAGE PAID
PERMIT NO. 478
WILLMAR, MN 56201

RETURN SERVICE REQUESTED

«TITLE» «F NAME» «L NAME»
«ORGANIZATION»
«ADDRESS 1»
«CITY» «STATE» «ZIP» «4 digit »

We're on the Web !
<http://www.mmrdc.org>

Serving the People of Kandiyohi, McLeod, Meeker, and Renville Counties Since 1974.

Commission Members

Kandiyohi County Representatives

DuWayne Underthun, Chairperson Townships
Les Heitke City of Willmar
Dennis Peterson County
Charly Leuze, Treasurer** Public Interest
Shawn Mueske Public Interest

McLeod County Representatives

Bill Schaeve Townships
Charles Warner Municipalities
Bill Arndt City of Hutchinson
Sheldon Nies County

Meeker County Representatives

Archie Peters Townships
Vernon Madson Municipalities
Ron Kutzke, Vice-Chairperson** County
Maureen Melgaard-Schneider Public Interest**
Sherron Reilly Public Interest*
Richard Brooks, Vice-Chairperson* Public Interest*
Dorothy Lindstrom, Treasurer* Public Interest

Renville County Representatives

Delbert Wetzel Townships
Ronald Degner, Secretary Municipalities
John Stahl County
Richard Loftness Public Interest
James Schafer Public Interest
Francis Schweiss Public Interest
Ken Anderson Public Interest

Commission Staff

Executive Director Donn Winckler
Financial Director/Office Manager Sue Gimse
Aging Program Director Kate Selseth
Senior Outreach Specialist Taryn Sietsema*
Berit Skurdahl**
Economic Development Director Les Nelson
Community Development Director Matthew Johnson
Natural Resource Planner Michael Sharp
GIS Planner Rick Moore
GIS Technician Natalie Hayenga
Planning & Administrative Assistant Teresa Westerman
SCDP Grants Administrator/
Building Official Bernard "Butch" Schulte*
Sid Fossan**
Building Permit Technician Kristen Rosenboom

* beginning of 2006

** remaining portion of 2006 - present

