

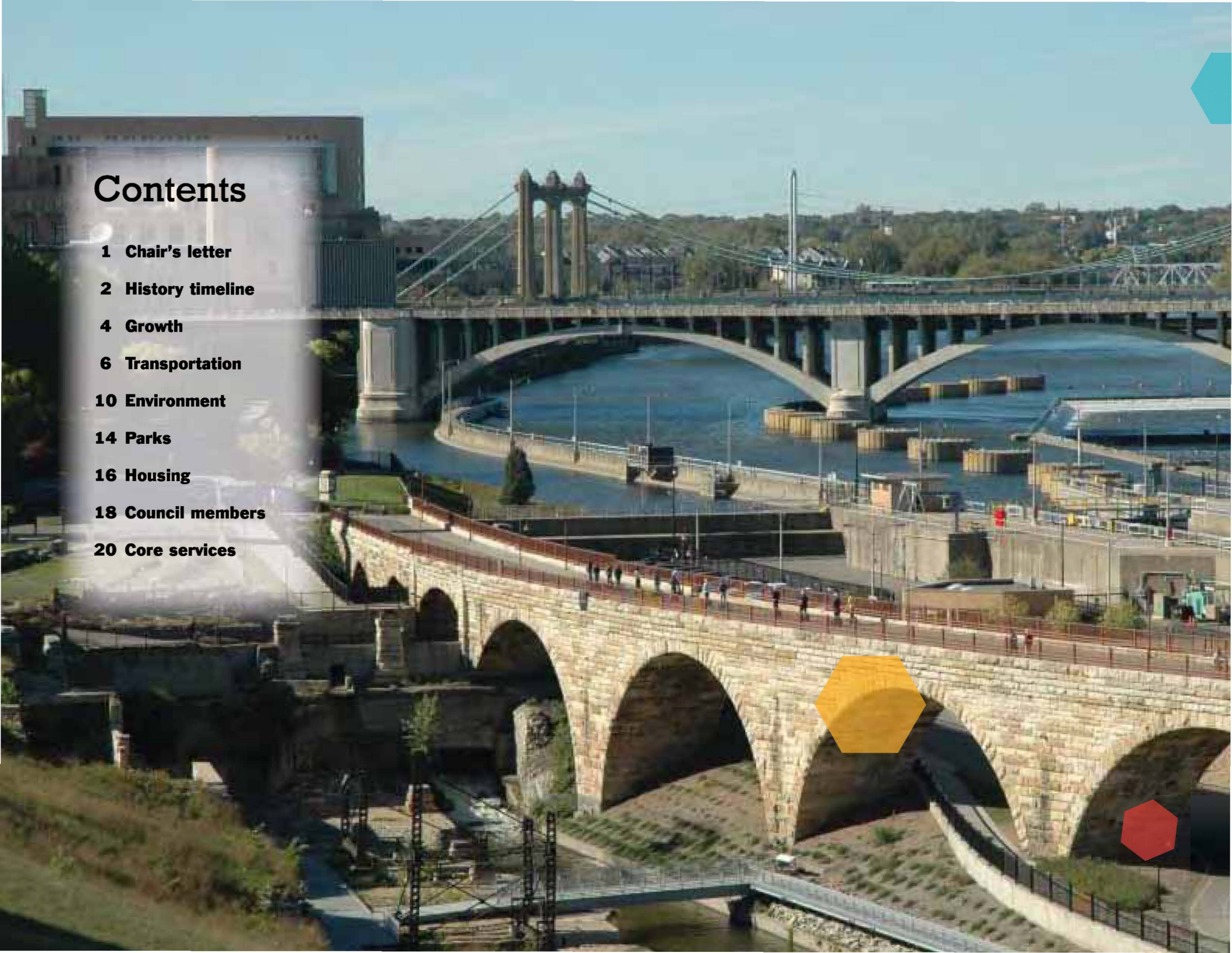
2006 Together, Shaping our Future



Transportation, Housing, Water Resources,
Parks & Open Space, Planning

Contents

- 1 Chair's letter**
- 2 History timeline**
- 4 Growth**
- 6 Transportation**
- 10 Environment**
- 14 Parks**
- 16 Housing**
- 18 Council members**
- 20 Core services**



From the Chair



Peter Bell

Peter Bell

By definition, an annual report takes stock of an organization's activities over the previous year. This year's annual report is a little different. It not only summarizes the Metropolitan Council's accomplishments in 2006, but also reflects on the progress that has been made since the Council was created four decades ago.

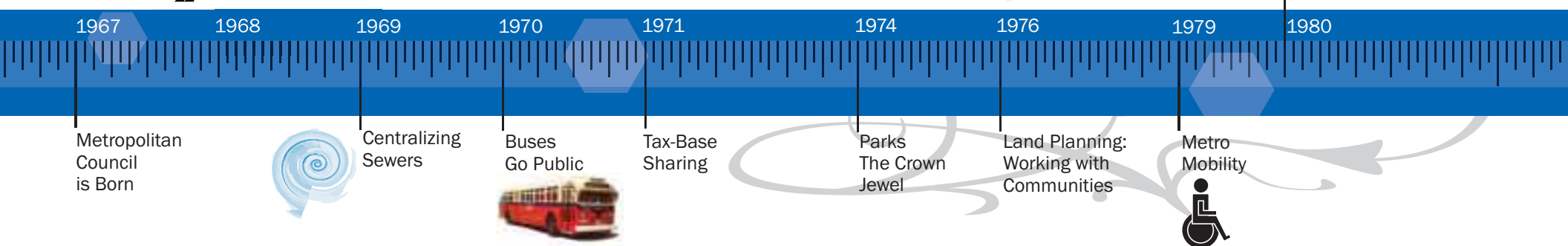
Over the last year, the Council:

- Worked closely with metro area communities as they prepared to update their local comprehensive plans, providing new tools and training to assist in that important work.
- Made significant strides in growing our transit system and easing traffic congestion, achieving the highest Metro Transit ridership in 22 years.
- Prepared to begin construction of the region's second rail transit line in the Northstar Corridor, and received approval from the Federal Transit Administration to begin preliminary engineering for light rail transit in the Central Corridor.
- Launched a "Go Greener" initiative at Metro Transit that includes the purchase of 150 new hybrid electric buses, as well as the use of clean, renewable fuels for our diesel buses.
- Completed the first phase of work on a master plan for the development, protection and efficient use of our region's drinking water supply.
- Held our property tax levy flat for the fourth consecutive year and moved into a newly renovated office building that will save the taxpayers \$14 million over the life of the building.

Many of these accomplishments are discussed in greater detail in the pages that follow.

As we prepare to observe our 40th anniversary, this report also touches on some of the problems that led to the Council's creation and the progress that has been made in the last four decades. The lessons we have learned as a region may be instructive as we seek solutions to the problems that lie ahead.

Peter Bell
Chair, Metropolitan Council



Council History –

For much of their history, Minneapolis and St. Paul were rivals – each with its own downtown, minor league sports teams, distinct ethnic makeup and political culture. The often-intense rivalry dated back to the 19th century, when each city got caught padding the 1890 census report in an attempt to appear bigger than the other.

However, by the early 1960s, the two cities had joined together to secure major league baseball, football and hockey teams. They grew together more closely with the construction of the interstate freeway system. And they came to recognize that rapid growth presented both region-wide opportunities and region-wide challenges requiring greater regional cooperation.

In 1967, the Metropolitan Council was established by the Legislature to:

- Plan for the orderly and economical development of the seven-county metro area.
- Coordinate the delivery of certain services that could no longer be effectively provided by local units of government.

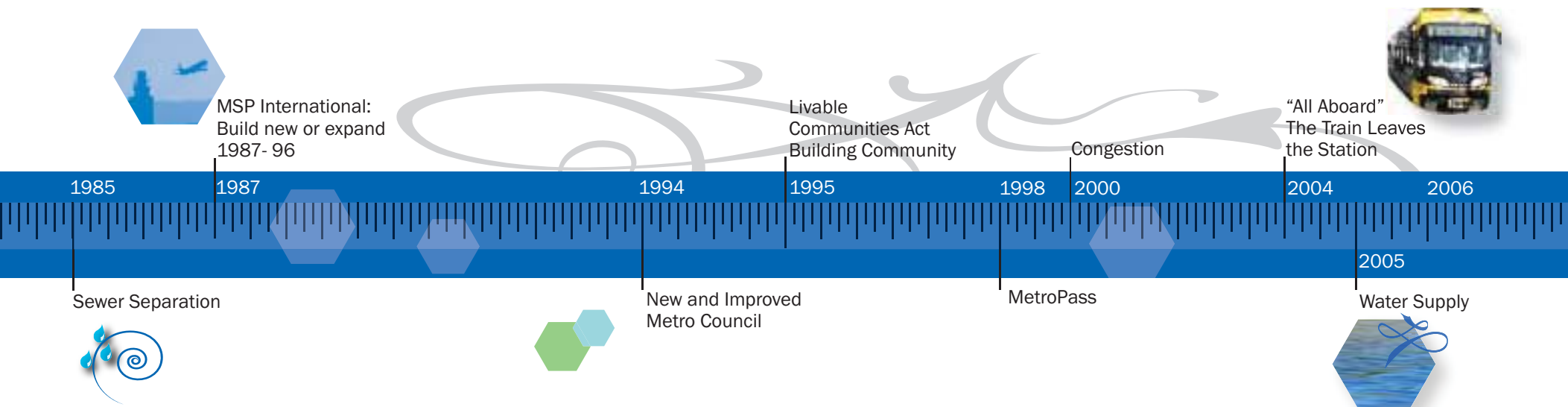
In 2007, as the Council enters its 40th year, it remains a rare model of regional planning, governance and cooperation that many other urban areas around the globe would love to emulate. Delegations of scholars, business and civic leaders regularly visit to learn more about what Time magazine once heralded as the “Minnesota model.”

The drive for the creation of the Council was led by the Citizens League, the Metropolitan Section of the League of Minnesota Municipalities, the League of Women Voters and others. They saw the need for some kind of coordinating body to deal with issues that transcended the boundaries of nearly 300

separate local units of government – including seven counties, 188 cities and townships, and 22 special purpose districts.

The original legislation avoided giving the Council operating authority. Instead, the Council was directed to develop broad regional policies and coordinate the implementing activities of regional operating agencies – notably the Metropolitan Airports Commission, Metropolitan Transit Commission (also created in 1967) and later the Metropolitan Sewer Board. The original architects of the Council wanted it to focus on providing a broad regional vision.

It was not until 1994 that the Legislature gave the Council operating authority for transit and wastewater treatment, eliminating the commissions that previously oversaw those functions. The Metropolitan Airports Commission remains as a separate operating agency, though its long-range plans and major capital expenditures are subject to Council review.



The forces that led to the creation of the Council included:

- Serious sewage disposal problems. The old municipal sewage treatment system operated jointly by Minneapolis and St. Paul was inadequate to meet the needs of developing suburbs.
- The need to expand and improve the region's transit system. The Twin Cities' privately owned bus company was rapidly disintegrating, a victim of rising fares, declining ridership and an aging bus fleet.
- Increased concern about urban sprawl and a desire to preserve vital open space, a central feature of this region's prized quality of life.
- Growing fiscal disparities among communities in the region – between "have" communities with large shopping malls and other commercial developments, and their "have-not" neighbors.

The creation of the Council in 1967 was followed in succeeding years by the enactment of other legislation to strengthen the Council and address some of these issues. These initiatives included the 1969 legislation that created the regional wastewater system, the regional tax-base sharing legislation passed in 1971 and the 1974 law creating the regional park system.

In appointing the first Council in August 1967, Governor Harold LeVander said:

"This Council was conceived with the idea that we will be faced with more and more problems that will pay no heed to the boundary lines that mark the end of one community in this metropolitan area and the beginning of another."

"This Council was created to do a job which has proved too big for any single community."



GROWTH

The 1976 Legislature passed the Metropolitan Land Planning Act, strengthening our system of regional planning. The act required local governments to adopt comprehensive plans that are consistent with the Council's Regional Development Framework and regional system plans.

In 1995, lawmakers approved the Livable Communities Act, another important tool for shaping growth. It created three new grant programs to help clean up contaminated lands for redevelopment; promote efficient, connected development; and expand the supply of affordable housing.



Region's growth is strong and steady



The Twin Cities metropolitan area continues to grow at a steady pace. In the first five years of the decade, the population grew by 6.4 percent, or 168,000 people. The number of households grew 7.7 percent. The region is on track to grow by one million people between 2000 and 2030.

As population grows, the demand for land and housing drives development outward into areas that previously were undeveloped “greenfields.” Both policy decisions and market forces influence the rate and pattern of development. Land-use data tracked by the Metropolitan Council show development occurred at a rate of 7,500 acres per year from 2000 to 2005, compared with a much higher land-consumption rate of 9,200 acres per year in the 1990s, a decade with similar population growth to this one.

The region met a benchmark set in the Council’s *2030 Regional Development Framework* that at least 27 percent of growth occur in the central cities and fully developed communities, where

costly infrastructure like roads and sewers are already in place. Developing communities had 61 percent of the growth, just one percent above the benchmark.

Council adds to planning toolbox

Communities in the seven-county area are preparing updates to their local comprehensive plans in response to the 2030 Framework and metropolitan system plans. Plan updates are due to the Council by the end of 2008.

In 2006, the Council offered a variety of new tools to assist communities with the updates:

- A series of eight monthly planning workshops focusing on highways, transit, water resources, forecasting, housing and other planning issues.
- The *Natural Resources Digital Atlas*, a two CD-set of geographic information to help communities protect significant natural resources.
- The *Guide for Transit-Oriented Development*, an online resource to aid communities in capitalizing on the economic development potential of transit corridors.

The Council’s online *Local Planning Handbook*, published in 2005, won the Outstanding Project Award from the Minnesota chapter of the American Planning Association in 2006.

Plan updates are due to the Council by the end of 2008. Prior Lake was the first community to submit its updated plan, which the Council reviewed in October 2006.

SNAPSHOT OF REGIONAL GROWTH				
	1980	1990	2000	2005
Developed Acres	353,000	423,000	515,000	553,000
Unavailable + Preserved	NA	434,000	470,000	481,000
Undeveloped + Agricult.	NA	1,048,000	919,000	870,000
Population	1,985,000	2,289,000	2,642,000	2,810,000
Households	721,000	876,000	1,021,000	1,100,000

Investments help keep communities vital

The Council approved nearly \$2.9 million in Livable Communities grants to clean up polluted land for redevelopment in 10 metro area communities. The grants will help to clean up 153 acres, with resulting redevelopment creating and retaining an expected 4,645 full- and part-time jobs and increasing the net tax capacity by \$9.5 million. An additional \$2.9 million in 2006 Tax Base Revitalization Account funds are expected to be awarded in January 2007.

The Council awarded \$8.8 million to 10 projects in 7 cities that demonstrate land uses that link housing, jobs and services, including transit. Grants went to projects that demonstrate: model redevelopment of an aging corridor; a variety of housing integrated by design; connecting streets and sidewalks that provide a catalyst for development; and innovative storm-water management that serves a broad area. Grant funds also will contribute to acquisition and removal of structures that are barriers to redevelopment for model projects.



TRANSIT

In 1969, the Council and the old Metropolitan Transit Commission helped end a 25-day strike by bus drivers and mechanics against Twin City Lines, the region's privately owned bus company. With the support of the Governor and the Council, the MTC moved to acquire the company, replace its aging fleet and improve service.

At the time TCL was acquired in 1970, 480 of the company's 635 buses were 15 years of age or older. After the acquisition, the MTC embarked on a five-year, \$20 million transit improvement program that included the purchase of the region's first air-conditioned buses, the installation of 135 bus shelters and the establishment of a 24-hour bus information center. The MTC became a part of the Council in 1994.



A banner year for transit

Rising gas prices and traffic congestion drove many commuters to transit during 2006, and they stayed on board even as prices moderated. Preliminary estimates pegged 2006 ridership on Metro Transit buses and light rail at its highest in 22 years – 73.8 million rides, a 5.9 percent increase over 2005.

Ridership on Metro Transit's express bus routes rose an estimated 11.1 percent in the same period. Ridership on suburban-operated transit routes grew at a similar pace.

As transit ridership grew in 2006, plans to expand the region's transit system made great strides. The Metropolitan Council selected light rail transit (LRT) as the preferred mode for the Central Corridor. The Federal Transit Administration (FTA) approved preliminary engineering for Central Corridor and final engineering for Northstar commuter rail. And voters approved an amendment to the Minnesota Constitution dedicating 100 percent of the proceeds from the motor vehicle sales tax to highways and transit. The dedication will be phased in over five years, starting July 2007.

Council chooses light rail for Central Corridor

Citing its promise of reliability, high ridership and capacity for future growth, the Metropolitan Council chose LRT for improving public transit in the Central Corridor between downtown St. Paul and Minneapolis. LRT was selected over bus rapid transit (BRT). While BRT would be much less expensive than LRT, the corridor cannot accommodate enough buses to meet the projected transit demand in 2020 and beyond.

In December, the FTA gave its approval for the Council and its partners to begin the two-year preliminary engineering process for the corridor. The process will complete about 60 percent of the project design work.

A 13-member Central Corridor Management Committee, led by Council Chair Peter Bell, will provide advice during the design and construction of the line. A Community Advisory Committee is also being formed.

As currently proposed, the 11-mile line would have 16 new stations, plus five stations shared with the Hiawatha line in downtown Minneapolis. The estimated cost of \$930 million will have to be trimmed in order to meet federal cost-effectiveness guidelines.

The Central Corridor is one of five transitways proposed for construction by 2020 in the Council's *2030 Transportation Policy Plan*. Each transitway will feature exclusive right-of-way for one of three transit modes: LRT, BRT or commuter rail.

Northstar rail moves ahead

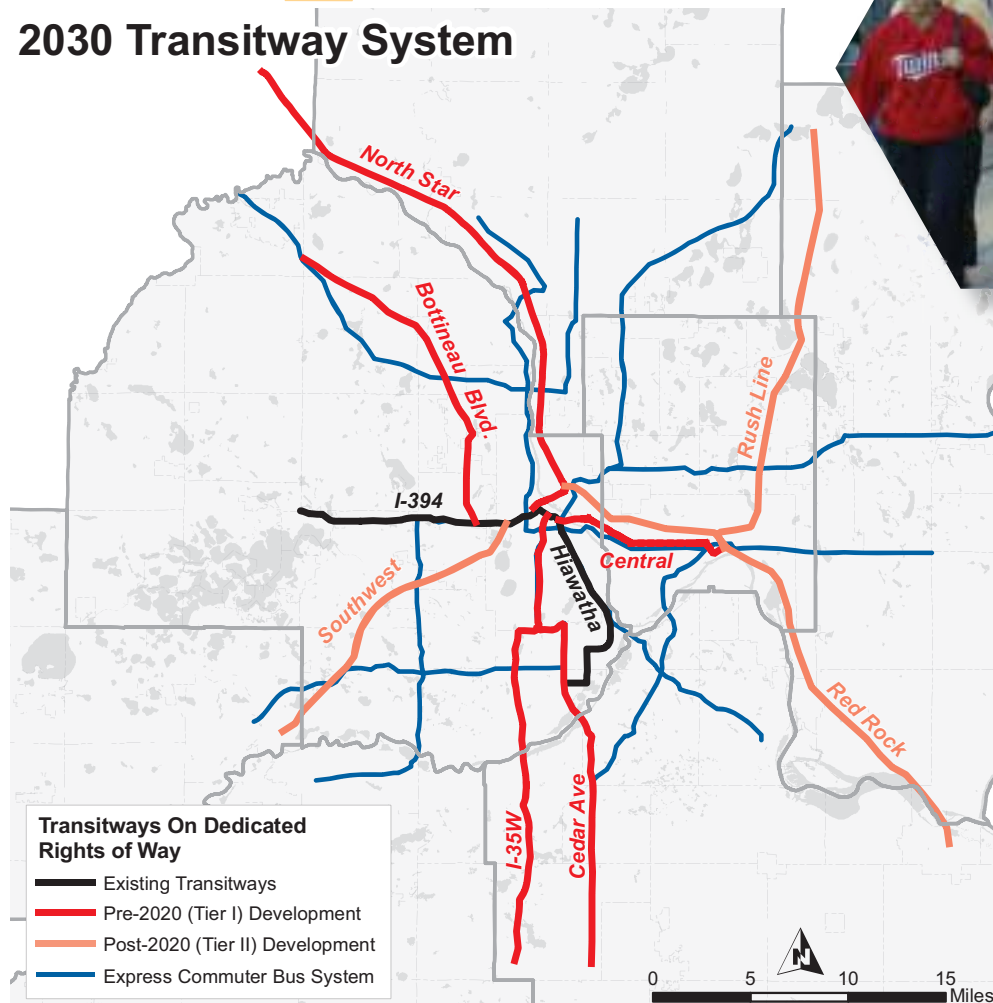
In 2006 the FTA approved the Northstar commuter rail project to move into final design, which means construction of the line could begin in 2007. Utilities were moved in downtown Minneapolis in late 2006 to prepare for a four-block extension of Hiawatha LRT to connect with Northstar.

Earlier in the year, the Northstar Corridor Development Authority, State of Minnesota and Burlington Northern Santa Fe (BNSF) Railway — owner of the train tracks Northstar will use — reached an agreement on key financial terms for Northstar construction and operation. In June, Governor Pawlenty signed legislation that secured an additional \$60 million in state bonding for the project.

The final state funding, combined with funding already provided by local governments in the Northstar Corridor, opens the door to receiving 50 percent federal matching funds. Total project cost is estimated at \$307.3 million (2008 dollars). Service between Big Lake and downtown Minneapolis is scheduled to begin in late 2009.



2030 Transitway System



Transit goes greener

In 2006 Metro Transit unveiled plans to add 150 hybrid-electric buses to its fleet over five years. The addition of hybrid-electric buses is one component of the agency's "Go Greener" initiative to advance Metro Transit's commitment to preserving the environment.

The hybrid-electric buses will get 22 percent better fuel mileage and emit half the exhaust soot of the buses they will replace. An additional 164 buses to be purchased will incorporate the latest engine technology that will burn diesel fuel more efficiently, reducing emissions and getting better mileage.

Metro Transit also leads the way in its use of biodiesel fuel. In 2006 the agency began fueling all its buses with "B-5" — a diesel fuel with five percent biodiesel made from soy. As part of the "Go Greener" plan, the agency plans to double the biodiesel content of its fuel supply to 10 percent in mid-2007. Metro Transit may choose a 20 percent biodiesel blend, pending operational tests the agency is conducting.

With this "Go Greener" effort, Metro Transit expects to reduce emissions by 168 tons each year and replace 1.23 million gallons a year of non-renewable fossil fuel with soy-based fuel consumption and hybrid technology at an estimated annual fuel savings of \$652,000.





- After extensive public input, Metro Transit developed a plan to improve bus connections and reliability in the north-west metro area. Service changes will be made in June 2007.

- Metro Mobility in 2006 was projected to provide approximately 1.1 million rides to people with disabilities while maintaining an on-time performance rate of more than 97 percent.



Other transportation highlights:

- The Council approved a \$2.4 billion regional Transportation Improvement Program for 2007-2010 to acquire land and build new roads, maintain old ones, and fund transit projects.
- The Council continues to expand the region's park-and-ride capacity in the face of exploding demand. The largest project is expansion of the 28th Avenue LRT park-and-ride from 550 to 1,650 spaces.
- Metropass, the Council's employer-subsidized annual transit pass, is now offered by more than 150 companies in the region, making it available to more than 129,000 employees. Metropass rides grew 27 percent from November 2005 through October 2006.



WASTEWATER

Our regional wastewater collection and treatment system was created by the Legislature in 1969 in response to a crisis. Inadequately treated waste was being dumped into the Mississippi River, Lake Minnetonka and other regional waterways. And the groundwater in a number of suburban communities was being contaminated by inadequate septic systems.

Within a decade, 21 inadequate treatment plants were closed and a system of modern facilities was developed. Today, our system of eight regional treatment plants and 600 miles of regional sewers regularly wins environmental awards while helping to maintain rates 25 percent below those of similarly sized systems.





Council sets new energy goals

Even as the region's population continued its steady growth in 2006, the Metropolitan Council achieved energy conservation and high environmental performance in its expanding regional wastewater collection and treatment system.

The Council's Environmental Services division launched an initiative to reduce its energy costs 15 percent by 2010 and increase its use of renewable energy. A new staff Energy Team will explore strategies to reduce energy consumption. The Council is already:

- Working with Xcel Energy to develop a strategic energy management plan.
- Using energy forward-pricing mechanisms to lock in about 80 percent of the projected natural gas usage for 2007 at a set price.
- Working with the University of Minnesota to develop partnerships for renewable energy projects.
- Incorporating more alternative-fuel vehicles into its fleet.
- Implementing anaerobic digestion in the solids processing at the Blue Lake Wastewater Treatment Plant in Shakopee. Methane gas will be produced and used, reducing external energy needs.
- Making energy-saving changes to operation and maintenance processes.
- Operating state-of-the-art incineration technology at the Metro Plant, reducing emissions and natural gas usage while generating electricity for the plant.

Plants cited for strong performance

All eight of the Council's wastewater treatment plants received "Peak Performance Awards" in 2006 from the National Association of Clean Water Agencies based on their 2005 performance. The Seneca Plant earned a prestigious Platinum Award for achieving five consecutive years (2001-2005) of full compliance with clean water discharge permits.

Expansion of the Empire Plant in Dakota County was completed in 2006, doubling the plant's treatment capacity to 24 million gallons per day. The plant serves the growing communities of Apple Valley, Lakeville, Farmington and, by 2008, all of Rosemount. Construction of lift stations, a new interceptor from Rosemount to the plant and an outfall pipe from the plant to the Mississippi River are expected to be completed by summer 2008.

The Council completed the purchase of 200 acres for a new wastewater treatment plant in Hastings. Construction is planned to begin about 2010, with capacity planned to serve eastern Dakota County as it grows.

Looking farther ahead, the Council is studying long-term wastewater service needs in the region, focusing now on the Lake Minnetonka and northern metro areas. The Council has also formed a partnership with Scott County to develop long-range plans, beyond 2030, for both transportation and wastewater collection and treatment in the fast-growing county.



Water supply planning moves forward

The 2005 Minnesota Legislature directed the Metropolitan Council to develop a base of technical information for water supply planning decisions and to prepare a metropolitan area water supply master plan. In the first phase of its work, the Council assessed water supply availability, evaluated the regulatory process and examined water supply safety, security and reliability. A 13-member Metropolitan Area Water Supply Advisory Committee – comprising state agency, city and county representatives – assisted the Council in its work.

As a result, the Council is submitting a report to the 2007 Minnesota Legislature. The report recommends that the Legislature:

- Approve changes clarifying agency roles in water supply plan review.
- Consolidate into one statute the requirements of community water supply plans.
- Link water supply planning to comprehensive planning.

In order to improve the safety and reliability of the region's water supply, the report also recommends state funding for interconnections and other physical water system backups to ensure protection of resources and the region's security. Specifically, the report recommends that the state provide funding for an interconnection between the Minneapolis and St. Paul water systems.

The Council's next step will be to develop the water supply master plan, which will include an assessment of water availability and water demand projections, based on regional growth forecasts and evaluated on a region/sub-regional scale to identify areas with potential supply limitations. For areas where potential limitations exist, options will be developed in cooperation with municipalities and regulatory agencies. The result will be greater certainty for communities that future water needs can be met and that the proposed withdrawals will be acceptable to regulatory agencies.



Eliminating excess clear water in sewers

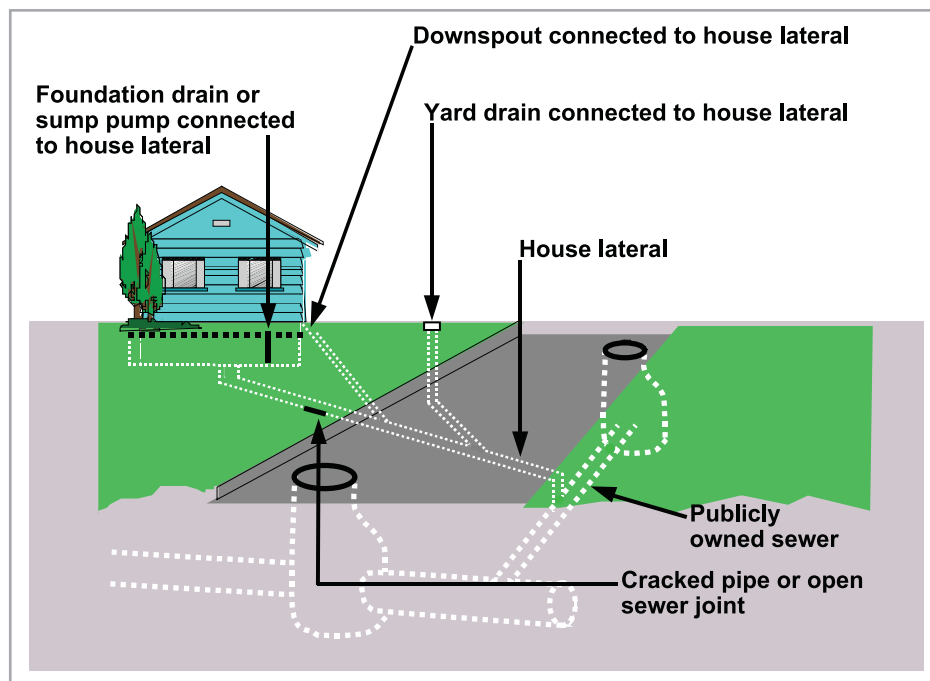
Communities around the region are taking action to reduce the inflow and infiltration (I/I) of clear water and storm water into sanitary sewers. After careful monitoring of excess sanitary sewer flows following large rainfall events, the Council in 2006 worked with communities that have excess I/I to set reduction goals. The Council developed an I/I toolbox to provide communities with information and options for how to reduce the problem.

All of the affected communities chose to move forward with reduction programs in lieu of a surcharge on their regional wastewater bills.

The results will be evaluated and future surcharges reduced or eliminated if programs have been successful.

The Council's program is a national model and is addressing the problem before it reaches a crisis point. Excess clear water robs the regional wastewater collection and treatment system of capacity needed for future growth. It also can cause sewer backups, resulting in threats to human health and the environment.

Sources of Inflow and Infiltration



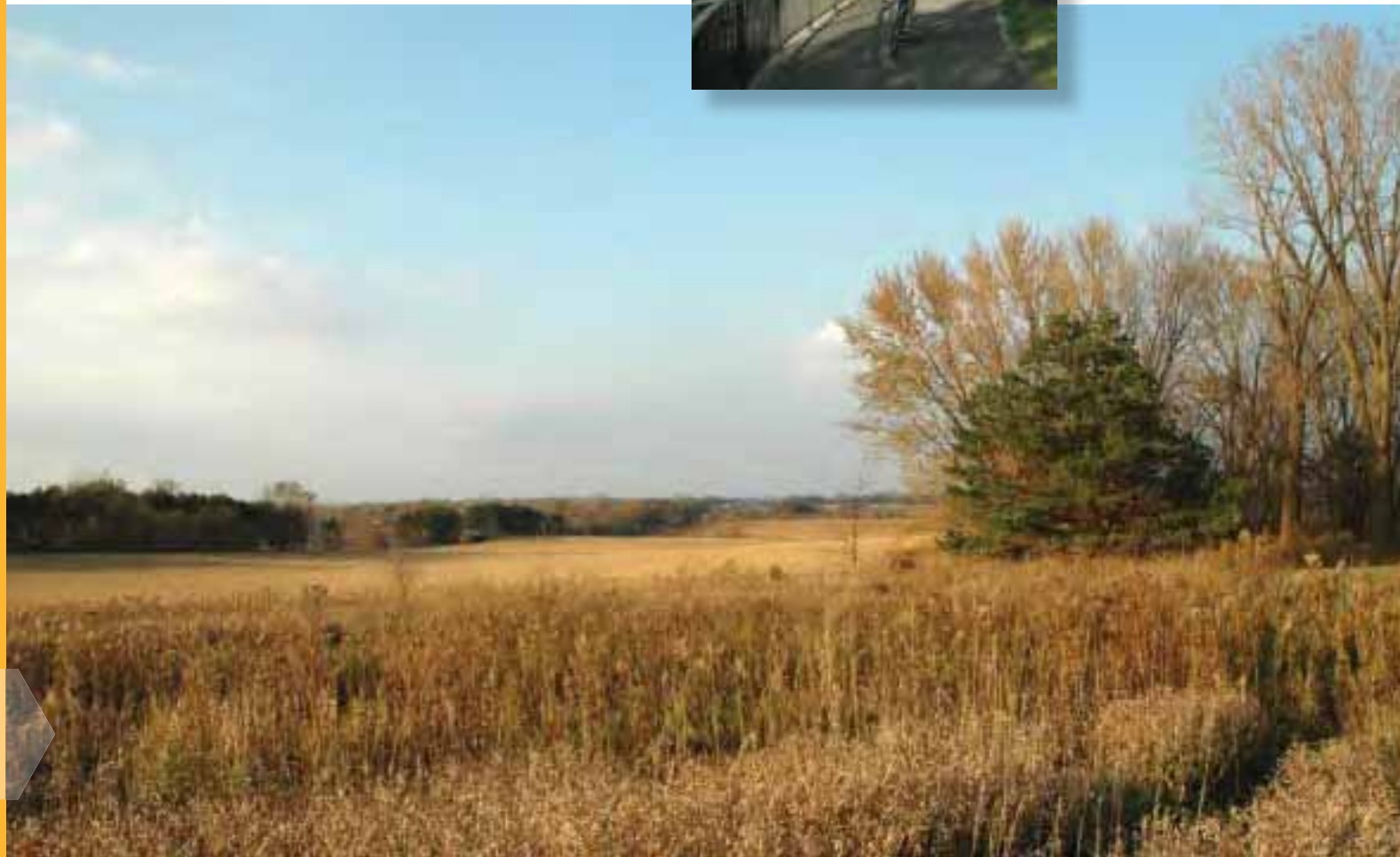
PARKS

The regional parks system was created by the Legislature in 1974. The original legislation designated 31,000 acres of existing parks as regional recreation open space, and authorized up to \$40 million in bonds for park land acquisition and development.

The Council's first regional open space plan identified 12 "immediate action sites" for acquisition. By the mid-1980s, all 12 sites had been acquired, including what are now the Lake Elmo, Lebanon Hills and Murphy-Hanrehan regional parks.

Parks for today and for future generations

Residents of the seven-county area consistently name the region's natural environment, and its parks and trails, as the most attractive features of living in the Twin Cities region, according to the Metropolitan Council's annual survey of residents. The 53,000-acre regional park system preserves open space, provides wildlife habitat and offers abundant opportunities for walking, biking, picnicking, swimming, skiing and numerous other activities.



In 2005, the most recent year for which data are available, the regional park system had an estimated 33.4 million visitors, up 9.6 percent from the previous year.

The Council's visionary *2030 Regional Parks Policy Plan* proposes adding more than 17,000 acres of parks and 680 miles of new trails by 2030. In 2006, the Council approved new or updated master plans for six parks and trails:

- **Dakota Rail Regional Trail** – This new, 13.5-mile trail on former railroad right-of-way will wind west from Wayzata around the northern bays of Lake Minnetonka, going southwest past Lake Waconia to the edge of Hennepin County.
- **Southwest Regional Trail Connection** – A 13.1-mile trail, a combination of new and existing trail alignments, will connect the north and south branches of the Southwest LRT Trail in Carver County.
- **Silverwood Special Recreation Feature** – This new park, located on Silver Lake in St. Anthony, will use arts as a medium for environmental education.
- **Lake Minnetonka Regional Park** – Expanded boat-trailer parking and picnic facilities, a new four-season picnic pavilion and formal gardens are among the improvements slated for the park.
- **St. Anthony Parkway Regional Trail** – Part of the Grand Rounds, 2.5 miles of bicycle trail along the parkway will be upgraded and extended.
- **Lake Elmo Park Reserve** – The 20-year-old park will get a facelift with a new nature center and amphitheatre, redesigned and expanded camping facilities, expanded field archery and trail improvements.



Requests for regional funding for park acquisition and development must be made to the Council, which annually evaluates and prioritizes the requests in its regional parks capital improvement program (CIP). The 2006 state bonding bill included \$7 million for projects included in the CIP, and the Council made a regional match of \$4.67 million. The Legislature made an additional \$23 million in line-item appropriations for regional parks acquisition and development, bringing the total investment to \$34.6 million.



HOUSING

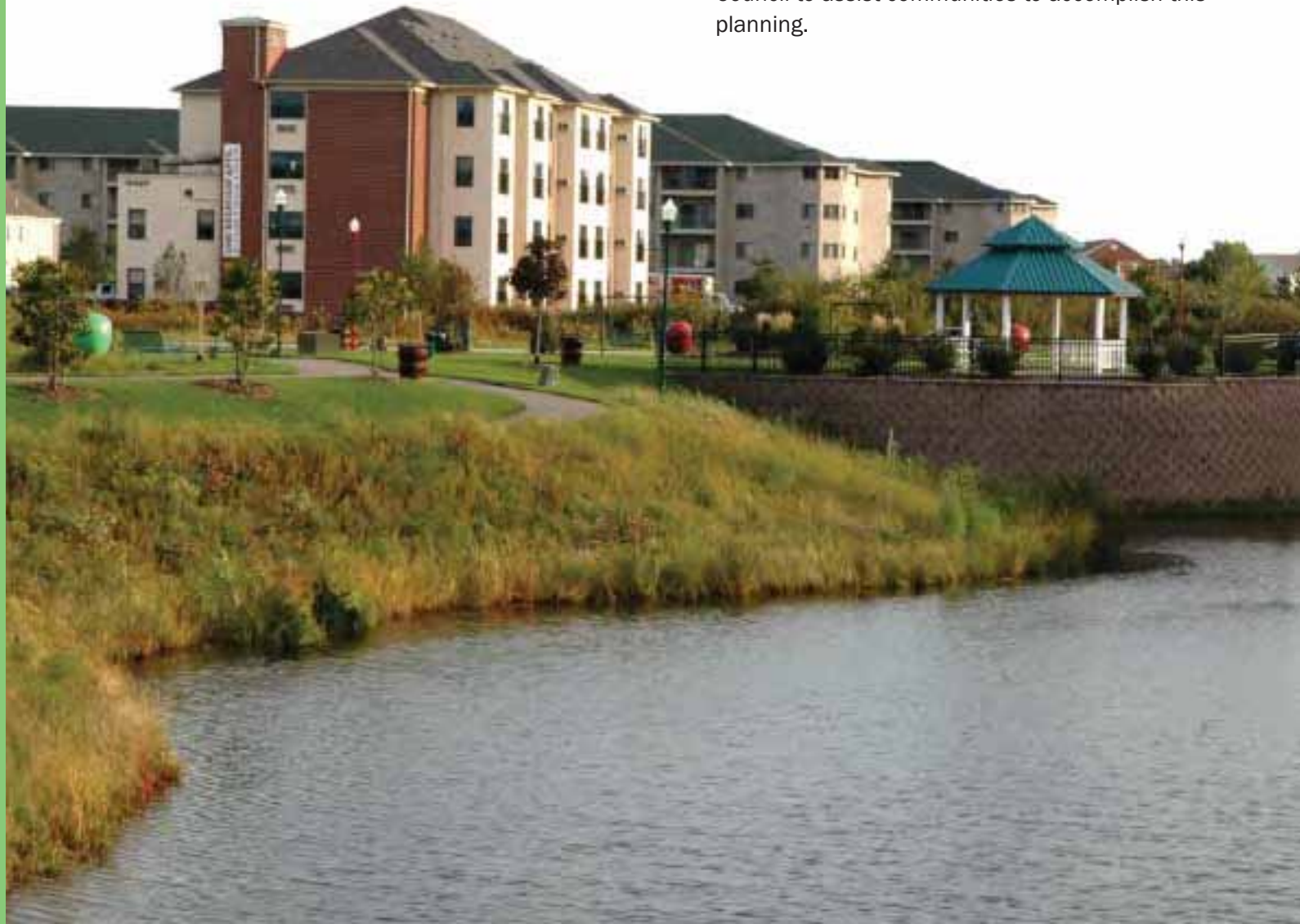
The Metro Housing and Redevelopment Authority (HRA) was created by the Legislature in 1974 to serve communities that did not have HRAs of their own. In 1975, the Metro HRA received its first allocation of Section 8 certificates to provide rental assistance to 500 low-income families in 13 communities.

Today, the Metro HRA provides assistance to more than 6,700 families in 100 communities, making housing more affordable and improving family stability.

Region needs more affordable housing

The Metropolitan Council estimates that the region will need 51,000 new housing units affordable to households with low and moderate incomes during the decade 2011-2020. That's about 31 percent of all forecasted new sewerer household growth in the decade.

Communities in the seven-county metropolitan area are required by state law to plan for sufficient housing to meet their local share of the region's overall need for low- and moderate-income housing. The law also requires the Metropolitan Council to assist communities to accomplish this planning.



In 2006, the Council added the affordable housing needs estimate to its *Local Planning Handbook*, and allocated that need among the region's 121 sewered communities. As communities update their comprehensive plans by 2008, they must identify the amount of land needed to accommodate both their overall forecasted growth and their share of the region's affordable housing need.

The four criteria for allocating the need include:

- Each community's share of forecasted sewered household growth.
- Number of low-wage jobs in or near the community.
- Existing share of affordable housing units compared to regional average.
- Level of transit service available to the community as reflected in the Council's long-range transit plan.

For the purposes of the Council's affordable housing needs forecasts for 2011-2020, a housing unit is considered affordable if it can be purchased or rented by a household earning 60 percent of the Twin Cities median family income. In 2006, the 60 percent threshold was \$47,100.

To determine the region's affordable housing need the Council engaged an advisory panel of affordable housing experts, including representatives from the Minnesota Housing Finance Agency (MHFA), the Family Housing Fund, the Association of Metropolitan Municipalities and local community development departments. The group employed methodology similar to that used in MHFA's well-received 2003 report, *Next Decade of Housing Minnesota*.

Council helps meet housing needs

The Council does its part on several fronts to help meet the region's need for housing affordable to families with low and moderate incomes.

Housing choice vouchers. The Council's housing and redevelopment authority, Metro HRA, operates the state's largest Section 8 rent assistance program for 100 suburban communities. As it has for several successive years, Metro HRA in 2006 achieved full use of its available tenant-based federal rent subsidy funding, assisting an average of 5,885 households monthly. Rental assistance payments were made to more than 2,300 property owners, injecting \$54 million annually of federal, state and local funds into the regional economy. The program's waiting list comprised about 3,500 households.

Scattered site rental housing. Metro HRA also uses federal funds to operate a scattered-site affordable rental housing program. The Council owns 150 homes in 11 suburban communities in Anoka, Hennepin and Ramsey Counties. The program houses low- to extremely low-income families, who pay 30 percent of their income for rent and utilities.

Assisting hurricane victims. Answering a request from Governor Pawlenty, Metro HRA took on administration of a federal emergency program to assist families displaced by Hurricanes Katrina and Rita. Working overtime and in collaboration with several other agencies, Metro HRA staff processed applications from 350 families, and met



with nearly 250 families. A total of 170 families found affordable rental housing in 25 metro area communities.

Housing assistance to communities. The Council in 2006 awarded a total of \$1.66 million to Minneapolis, St. Paul, six suburbs and two multi-community land trusts to support affordable housing initiatives. The funds will assist in the development or rehabilitation of 172 rental units affordable to lower income households and 9 new and 25 rehabilitated affordable ownership units. The grants, made from the Local Housing Incentives Account of the Livable Communities Fund, will leverage an additional \$37.6 million in total development investments.

Council Members



Chair
Peter Bell, Minneapolis
651-602-1453
peter.bell@metc.state.mn.us



District 1
Roger Scherer, Plymouth
763-557-9749
roger.scherer@metc.state.mn.us



District 2
Tony Pistilli, Brooklyn Park
763-228-1867
tony.pistilli@metc.state.mn.us



District 3
Mary Hill Smith, Wayzata
952-475-1388
mary.smith@metc.state.mn.us



District 4
Jules Smith, Chaska
952-361-9988
julius.smith@metc.state.mn.us



District 9
Natalie Steffen, Ramsey
763-753-4298
natalie.steffen@metc.state.mn.us



District 10
Kris Sanda, Blaine
763-757-1962
kris.sanda@metc.state.mn.us



District 11
Georgie Hilker, White Bear Lake
651-249-1410
georgie.hilker@metc.state.mn.us



District 12
Chris Georgacas, Mahtomedi
651-292-8062
chris.georgacas@metc.state.mn.us

Council Mission

The mission of the Metropolitan Council is to develop, in cooperation with local communities, a comprehensive regional planning framework, focusing on transportation, wastewater, parks and aviation systems, that guides the efficient growth of the metropolitan area. The Council operates transit and wastewater services and administers housing and other grant programs.



District 5
Russ Susag, Richfield
612-866-0373
russ.susag@metc.state.mn.us



District 6
Peggy Leppik, Golden Valley
763-546-3328
peggy.leppik@metc.state.mn.us



District 7
Annette Meeks, Minneapolis
612-341-8168
annette.meeks@metc.state.mn.us



District 8
Lynette Wittsack, Minneapolis
612-788-1235
lynette.wittsack@metc.state.mn.us



District 13
Richard Aguilar, West St. Paul
651-665-0633
rick.aguilar@metc.state.mn.us



District 14
Song Lo Fawcett, St. Paul
651-224-3781
songlo.fawcett@metc.state.mn.us



District 15
Daniel Wolter, Eagan
651-882-7814
dan.wolter@metc.state.mn.us



District 16
Brian McDaniel, Apple Valley
952-239-3612
brian.mcdaniel@metc.state.mn.us

Metropolitan Council Core Services

The Metropolitan Council serves the public in five principal areas:

1) Providing and coordinating regional transit services and travel-demand management through Metro Transit, regional-route service and Metro Commuter Services; working with transit providers, transportation agencies and businesses to reduce traffic congestion and improve air quality; and providing transportation service to people with disabilities through Metro Mobility.

2) Conserving and protecting vital natural resources, principally water, by collecting and treating wastewater; coordinating water supply planning and monitoring water quality; and also open space, helping to plan, acquire and develop a system of regional parks.

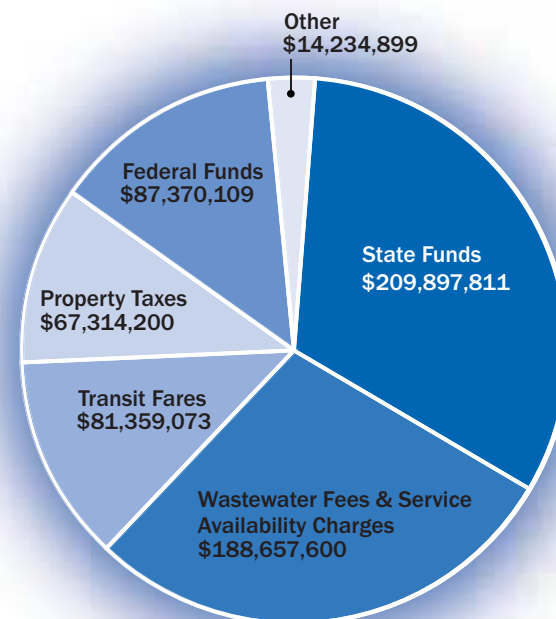
3) Providing affordable housing choices by working with communities and employers to increase the supply of affordable housing, and providing affordable housing opportunities to low- and moderate-income families through the Metro Housing and Redevelopment Authority.

4) Working with local communities to accommodate growth in a flexible, connected and efficient manner; encouraging the creation of neighborhoods that are walkable, convenient to transit, jobs, shops and services, incorporate green space, include affordable housing, and save on infrastructure costs.

5) Increasing efficiency of regional services and investments by maintaining a AAA credit rating, making efficient and effective capital improvements, and providing cost-competitive services.

2006 Budget Revenue (Amended)

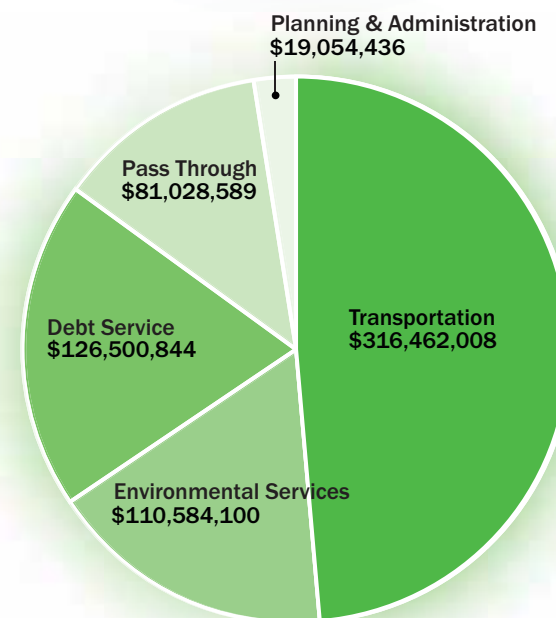
Total =	\$648,833,692*
Wastewater Fees and Service	
Availability Charges	\$188,657,600
Transit Fares	\$ 81,359,073
Property Taxes	\$ 67,314,200
Federal Funds	\$ 87,370,109
Other	\$ 14,234,899
State Funds	\$209,897,811



2006 Budget Expenditures (Amended)

Total =	\$653,629,977
Transportation	\$316,462,008
Environmental Services	\$110,584,100
Debt Service	\$126,500,844
Pass Through	\$ 81,028,589
Planning and Administration	\$ 19,054,436

*Revenues and expenditures for pass-through and debt-service funds rarely match on an annual basis. In 2006, the Council used reserves to make up the difference in revenues and expenditures.



Contact Information

General Offices – Regional Administration

651-602-1000

TTY 651-291-0904

Chair and Regional Administrator's Offices

651-602-1554

Fax 651-602-1358

Environmental Services

651-602-1005

Metro Transit

612-349-7400

Metro Mobility Service Center

651-602-1111

TTY 651-221-9886

Customer information for transit services for certified riders with disabilities

Transit Information Center

612-373-3333

Metro Transit Rideshare

612-373-3333, Option 4

Commuting options, employer trip-planning and travel-demand management

Metro HRA

651-602-1428

Housing Choice vouchers for low-income families and individuals

Regional Data Center

651-602-1140

Maps, CD-ROMs, reports and publications

Email: data.center@metc.state.mn.us

Public Comment Line

651-602-1500

24-hour voice mail for comments, ideas, suggestions

www.metrocouncil.org for regional information

www.metrotransit.org for transit, rideshare, and employer program information.



Council Executive Team

Regional Administrator

Tom Weaver

General Manager, Metro Transit

Brian Lamb

General Manager, Environmental Services

Bill Moore

Director, Metropolitan Transportation Services

Arlene McCarthy

Acting Director, Community Development

Guy Peterson

Director, Finance and Administration

Beth Widstrom-Anderson

Director, Public Affairs

Steve Dornfeld

Publication number 14-07-002

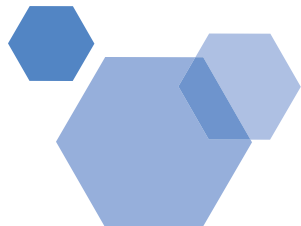
Upon request, this publication will be made available in alternative formats to people with disabilities.

An annual report is required by statute.

Concept and design by Linda White.

The graphic preparation and printing of this publication cost \$4,930 for a total of 2,000 copies.

This publication is printed on recyclable paper.



Metropolitan Council

390 North Robert Street
St. Paul, MN 55101



**Metropolitan Council
2006 Annual Report**

Appendices



Metropolitan Council

Mears Park Centre, 230 East Fifth Street, St. Paul, Minnesota 55101

Metropolitan Council Members

Peter Bell	Chair
Roger Scherer	District 1
Tony Pistilli	District 2
Mary Hill Smith	District 3
Julius C. Smith	District 4
Russ Susag	District 5
Peggy Leppik	District 6
Annette Meeks	District 7
Lynette Wittsack	District 8
Natalie Haas Steffen	District 9
Kris Sanda	District 10
Georgeanne Hilker	District 11
Chris Georgacas	District 12
Rick Aguilar	District 13
Song Lo Fawcett	District 14
Daniel Wolter	District 15
Brian McDaniel	District 16
Tom Weaver	Regional Administrator

General phone	651 602-1000
Regional Data Center	651-602-1140
TTY	651 291-0904
E-mail	data.center@metc.state.mn.us
Web site	www.metrocouncil.org

Publication no. 14-07-003

The graphic preparation and printing of this report cost \$208.00 for 100 copies.

Printed on recycled paper with at least 20 percent post-consumer waste.

On request, this publication will be made available in alternative formats to people with disabilities. Call the Metropolitan Council Data Center at 651 602-1140 or TTY 651 291-0904.

Contents

Appendix A. Studies and Recommendations	A-1
Appendix B. Policy Plans and Amendments Adopted in 2005 and Related Review Comments of Affected Metropolitan Agencies	B-1
Appendix C. 2005 Budget and Program Information	C-1
Appendix D. 2006 Legislative Program	D-1
Appendix E. Plans, Projects and Applications Submitted to the Metropolitan Council, January 1 through December 31, 2005	E-1

Appendix A. Studies and Recommendations

Summary: 2005 Metro Residents Survey

Each year, the Metropolitan Council conducts the Metro Residents Survey, an annual effort dating back to the early 1980s. The Council conducts the survey to gauge what the region's residents think about quality of life, leading regional issues, problems and solutions, and the Council's portfolio of program responsibilities. The survey heightens understanding of regional issues and provides evidence that the Council can use to make the case for regional solutions.

The survey results are summarized below.

- ***Transportation and crime top list of resident concerns***

Transportation and crime led the region's list of problems in an annual survey conducted by the Metropolitan Council, both as the region's most important issue and as one of the top three issues facing the region.

When asked to name the region's "single most important problem," 35 percent of area residents mentioned traffic congestion and transportation.

Public concern about crime increased from 17 percent in 2004 to 26 percent in 2005.

- ***Traffic congestion leads transportation concerns***

While this is the consecutive top ranking for transportation, fewer people were concerned about transportation in 2005 than in 2003 and 2004. One interpretation is that drivers have become accustomed to traffic conditions. Transportation system research has shown that road congestion in the region may have leveled off since 2003.

- ***Growing concerns about growth***

While most residents continue to feel that the region as a whole is growing at about the right pace, residents are increasingly concerned about growth in their own community. Since 2000, the percentage of residents concerned about local growth has increased from 26 percent to 38 percent.

- ***Regional quality of life good, but declining?***

Positive feeling about the Twin Cities region has been consistent over 23 years of Council surveys. Ninety-six percent of survey participants said the region is a better place to live than other metropolitan areas.

However, only 14 percent of those surveyed felt the region's quality of life improved during the past year, while 31 percent said it has declined.

- ***Parks and open space highly valued***

In response to a question on the "most attractive feature" of the region, 37 percent of residents identified parks, trails, lakes and the environment. The region's arts and culture scene attracted 8 percent of those surveyed; an equal number cited good neighborhoods. The region's diverse variety of things to do and shopping opportunities were each mentioned by 7 percent of those surveyed.

- ***Meeting transportation needs***

A majority of the region's residents say it is very important to expand the commuter/light-rail-transit system and to pursue multiple solutions to long-term transportation needs. It's not a matter of roads or transit; it's roads AND transit.

- **Metropolitan Council performance**

Positive public opinion about the Metropolitan Council remained steady compared to 2004, and is greatly improved from five years ago.

Sixty-nine percent of those surveyed said they have heard about the Metropolitan Council; 37 percent of those who had heard about the Council said it is doing a good or very good job.

- **Importance of Council programs**

At least 90 percent of those surveyed considered Council programs to monitor water quality, plan for regional growth and treat the region's wastewater to be moderately or very important. At least 70 percent of respondents gave similar ratings to all of the Metropolitan Council programs considered by the survey.

Methodology

Results are based on responses from 1,082 survey participants, collected in October and November 2005 by Metropolitan Council research staff. Participants were randomly selected from adult residents of the seven-county region. Responses are weighted to reflect demographic and geographic distribution. Estimates have a margin of error of plus or minus 3 percent.

Recommendations: None

Summary: Determining Affordable Housing Need in the Twin Cities, 2011-2020

The Metropolitan Land Planning Act requires communities in the region to include in their comprehensive land-use plans a housing element that acknowledges the city's share of the forecasted regional need for low- and moderate-income housing.

The Land Planning Act also requires that comprehensive plans include an implementation section identifying the housing programs that communities will use in addressing their share of regional need for affordable housing. Such programs include local, state and federal fiscal devices, such as bonding, tax-increment financing, tax abatement and official controls, including the guiding and zoning of land.

Forecasts of affordable-housing need are an important tool in helping communities determine the housing goals and objectives to be included in the housing element of their comprehensive land-use plans. These forecasts also help them envision and plan their role in addressing their share of the regional forecasted need for affordable housing.

Definition of Affordability

For this study, a housing unit was considered affordable if it was priced at or below 30 percent of gross income of a household earning 60 percent of the Twin Cities median family income (or \$46,200 in 2005). The 60 percent income threshold is determined by the U.S. Department of Housing and Urban Development (HUD) and is the cutoff for tax-credit housing development, the main program for construction of new affordable rental housing nationwide.

Fifty-nine percent of all first-time homebuyers in the Twin Cities area assisted by the Minnesota Housing Finance Agency in fiscal year 2005 had incomes at or below 60 percent of median income.

Forecasted Need

Based on the methodology used in this study, the seven-county Twin Cities area will need 51,030 affordable housing units between 2011 and 2020. The numbers for individual counties are:

Anoka	5,298
Carver	4,738
Dakota	7,604
Hennepin	16,514
Ramsey	4,526
Scott	6,559
Washington	5,791

Recommendations: None.

Summary: Best Practices Review – Housing Affordability and Regulatory Barriers

The Council's Land Use Advisory Committee reviewed a variety of housing affordability resources from February through September 2006 in order to compile a tool for local communities to use as they update their 2008 comprehensive plans. The Land Use Advisory Committee reviewed the implementation of affordable housing from the perspectives of both local government and developers. The advisory committee discussed both roles with representatives from the Builders Association of Twin Cities and the Association of Metropolitan Municipalities.

The advisory committee also reviewed general tools and strategies to help communities resolve housing affordability issues, including reviewing a fiscal-impacts scenario tool used by Hennepin County to evaluate the relative costs of development.

The tools and reports reviewed and inventoried by the Land Use Advisory Committee include the following topics: (1) barriers to affordability, (2) promoting affordable housing, (3) model codes, (4) tools and resources and (5) inter-regional comparison.

Recommendations: None.

Summary: A 2005 Study of the Water Quality of 172 Metropolitan Area Lakes

The study was the latest in a continuing series of reports summarizing results of the Metropolitan Council's annual lake monitoring program. The Council has collected water quality data on area lakes since 1980.

The study collected data from 172 lake sites sampled in 2005, including 12 sites on 10 lakes monitored by the Council and 160 lakes monitored by volunteers. Eighty-six of the 172 lakes monitored in 2005, are listed by the MPCA as impaired waters because of excessive nutrients (phosphorus) affecting the lakes' ability to support their designated recreational uses.

Forty percent of the lakes received an overall grade of "C." The water quality of these lakes is considered average as compared to others in the seven-county metropolitan area. When comparing the percentage of above-average lakes (those receiving grades of "A" or "B") to below-average lakes (those receiving "D" or "F"), more lakes were below average (34 percent to 27 percent).

Of the 129 lakes also sampled in 2004 with a sufficient database, 24 had a worse overall water quality grade; 14 had better overall water quality grades; and 91 had the same overall water quality grade for both years.

Water quality data from the 129 lakes sampled in both 2004 and 2005 seem to indicate that the metro area lakes experienced slightly worse water quality conditions in 2005 as compared to 2004. This after two years where the lake monitoring program revealed slightly better water quality as that recorded during the previously monitored years.

Recommendations: None.

Appendix B. Policy Plans and Amendments Adopted in 2006 and Related Review Comments of Metropolitan Agencies

Summary: Amendments to 2030 Regional Parks Policy Plan Adopted June 28, 2006

The amendments revised the plan's policy for reimbursing implementing agencies for early acquisition of parkland, before park funds are available for the purchase. Under the amendment, the Council will provide reimbursement for parkland currently designated as regional recreation open space by the Council in its *2030 Regional Parks Policy Plan* if the acquisition is in full agreement with a Council-approved master plan as required under Minn. Statutes 473.313 and if the implementing agency received Council approval prior to undertaking the acquisition.

The Council would also consider reimbursing a park agency for the costs to acquire or protect the land via an option to purchase under specified conditions. If the conditions are met, the Council will consider reimbursing the park agency via a grant as permitted under Minn. Statutes 473.315 for certain types of costs.

The amendment identifies costs that are not eligible for reimbursement and specifies how phased projects supported by a reimbursement grant would be ranked for funding in the regional parks capital improvement program. The amendment also spells out the steps to be taken when reimbursement requests are considered in a biennial capital improvement program.

In addition, the Regional Park System Map was amended to show a trail classification entitled "interim trail use subject to shared use or displacement with transit use of this right-of-way in the future."

Comments from Metropolitan Agencies. None.

**Summary: Amendment to 2030 Transportation Policy Plan
Adopted Sept. 27, 2006**

The Metropolitan Council amended the plan to designate the locally preferred alternative for the Central Corridor Transitway as light-rail transit. The plan previously listed both bus rapid transit (BRT) and LRT as alternatives along the corridor.

Other references to BRT in the plan were deleted, and capital dollar figures were revised for LRT in the Central Corridor.

As part of this amendment, the Council revised the Conformity Documentation (Appendix K) for meeting carbon monoxide standards. Appendix K includes the conformity analysis for LRT.

Comments from Metropolitan Agencies. None.

**Summary: Amendment to 2030 Transportation Policy Plan, Appendix D
Adopted Oct. 11, 2006**

As the designated Metropolitan Planning Organization for the seven-county metropolitan area, the Metropolitan Council adopted a revised public participation plan to help ensure that its transportation planning processes include a proactive public involvement process and comply with federal public participation plan requirements.

The public participation plan identifies strategies and tools to help ensure effective public participation in the Council's transportation planning activities. The plan replaced the citizen participation plan contained in Appendix D of the Council's *2030 Transportation Policy Plan*, which was adopted on Dec. 15, 2004.

The purpose of the revised participation plan was to:

1. Comply with the proactive public involvement requirements federal regulations, laws and guidelines on transportation planning and program access.
2. Efficiently use resources devoted to public participation.
3. Contribute to sound transportation planning decisions that benefit the region.

The participation plan reinforces the Council's long-standing commitment to public involvement in its planning efforts, and continues its tradition of incorporating best practices. It offers a range of practices to engage people with diverse backgrounds and life experiences.

The Council will use its processes for data collection and analysis to guide participation efforts and help ensure meaningful access to its public participation opportunities.

Comments from Metropolitan Agencies. None.

Summary: Amendment to 2030 Regional Development Framework and *Water Resources Management Policy Plan* – East Bethel
Adopted Dec. 13, 2006

The *2030 Regional Development Framework* and *2030 Water Resources Management Policy Plan* were amended to indicate that the City of East Bethel is a designated Rural Growth Center, where “the Council will use regional investments and incentives to help Rural Growth Centers accommodate growth as an alternative to scattered development in the rural area.”

Amendments to Development Framework

- East Bethel was added to the list of Rural Growth Centers that “include residential neighborhoods surrounding a center that provides basic consumer services and community activities.”
- Planning for wastewater services was expanded to include consideration of locating a new wastewater treatment facility in the rural growth center if doing so would be more efficient and cost-effective, and provide other regional benefits.
- East Bethel was also added to the Diversified Rural planning area designation.
- The planning area map in the *Development Framework* was amended to show East Bethel as a designated rural center and diversified rural community.
- Tables were amended to show the planned housing capacity and correspondingly amended forecast numbers for East Bethel.

Amendments to Wastewater System Plan, Water Resources Management Policy Plan

- An additional implementation strategy for Rural Growth Centers was added: “Alternately, the Rural Growth Center may request that the Council own and operate a new wastewater treatment plant to serve the community, following the same criteria and process.”
- The number of municipal wastewater treatment plants was changed from 16 to 17, and East Bethel added to the list of municipal treatment plants.
- Information about an East Bethel treatment plant was added: maximum and average capacity (in gallons per day), receiving waters, effluent limits and an explanation of how plant capacity would be staged.
- The Capital Improvement Plan for Rural Growth Centers shifted \$30 million from the 2021-2030 period to the 2005-2010 period.
- Forecasts of sewer population, households, and employment were revised to add the proposed East Bethel wastewater treatment plant.
- Wastewater flow projections were revised to add East Bethel.
- The Long-Term Service Area Map was amended, revising the long-term service area for East Bethel and showing the proposed East Bethel wastewater treatment plant.

Amendment to Regional Forecasts for Population, Households, Employment

- East Bethel’s forecasts for population, households and employment were revised accordingly.

Comments from Metropolitan Agencies. None.

Appendix C. 2007 Budget and Program Information

The Metropolitan Council's 2007 unified operating budget, to be submitted to the Minnesota Legislature in January 2007, contains detailed budget information and a general description of the Council's proposed program of work in 2007.

The financial objectives underlying the 2007 budget include:

- Effectively managing fund balances and reserves;
- Maintaining AAA bond rating;
- Keeping the tax levy's impact flat on taxpayers.

The 2007 proposed budget addresses multiple financial challenges facing the Council. These challenges include a Council commitment to maintaining a flat property tax impact to taxpayers, increasing transit demand and managing increased diesel fuel and utility costs.

Operating Budget Categories

The 2007 unified operating budget is \$665.6 million, an increase of 2.9 percent from the 2006 adopted budget. The Council's unified operating budget is composed of three major categories:

- **Operating expenditures** are costs incurred to support the Council's primary service activities. Operating expenditures in 2007 are expected to be \$451.9 million, up 2.4 percent from the 2006 adopted budget. The increased expenditures are driven primarily by higher labor and diesel fuel and utility costs.
- **Pass-through grants and loans** are funds received by the Council, which are then granted, loaned or passed on to another agency, organization or individual for a specified use. Pass-through grant and loan expenditures in 2007 will be \$80.4 million, up 1.7 percent from \$79.1 million in 2006. The increase is driven primarily by increased federal HUD funding.
- **Debt service** consists of expenditures required to pay both the principal and the interest on bonds, notes, certificates and loans. Debt service expenditures in 2007 will be \$133.2 million, up 5.3 percent from \$126.5 million in 2006. The increase is due primarily by capital projects in the Council's Environmental Services Division.

Minnesota statutes authorize the Council to levy taxes on all taxable property within the Council's geographic jurisdiction to provide funds for specific purposes. The Council's taxing area for all purposes, except transit debt, consists of the seven-county Twin Cities metropolitan area, minus those cities within the seven counties but outside the Council's jurisdiction.

The boundaries of the Transit Taxing District include those communities receiving regular-route transit service. The total combined 2007 property tax levy for all Council purposes is \$71.1 million, a 0.4 percent decrease from the 2006 levy of \$71.4 million.

2007 Program Priorities

Environmental Services Division: The following considerations were the top priorities during the planning of the 2007 budget for this division:

- Meeting regulatory requirements.
- Retaining competitive rates and charges.
- Meeting customer expectations for quality and level of service.
- Fully funding the current cost of all programs and adding to operating reserves.

Meeting current and future regulatory requirements continues to be the top priority for this division.

The near-perfect record of compliance is a commendable achievement, but it carries an inherent challenge: regulatory changes that cause additional capital and operating expenses. To meet these future challenges, the division is committed to achieving the highest level of quality possible with the resources available and preserving its outstanding record of compliance with regulatory requirements while providing cost-effective service. This division is committed to providing the wastewater infrastructure necessary to meet the needs of a changing metropolitan area.

Transportation Division – Metropolitan Transportation Services: Metropolitan Transportation Services (MTS) has two functions: to be the leader in Twin Cities regional transportation planning and to provide a wide range of contracted transit services.

- **Carrying out the Council's responsibilities for regional transportation planning.**

As the federally designated Metropolitan Planning Organization (MPO) for the Twin Cities region, the Metropolitan Council is responsible for conducting and coordinating all of the region's transportation planning. This includes the development of the region's long-range transportation plan (the *2030 Transportation Policy Plan*), the region's short-range four-year transportation plan (the Transportation Improvement Program) and the region's annual planning and research staff work plan (the Unified Planning Work Program).

The Council also participates in transportation planning efforts throughout the region, such as highway corridor studies, transitway studies, long-range airport needs analyses, freight studies, air quality conformance analyses, regional transportation modeling, area traffic studies and bikeway needs analyses.

- **Overseeing contracted transit programs.**

MTS manages or coordinates four transit programs, which provide services through contracts with private, public, and nonprofit entities. These programs are:

- Metro Mobility/ADA – paratransit service to persons with disabilities through six contracts.
- Community-based programs – dial-a-ride transit service in Anoka, Washington, Dakota, Scott, Carver, and parts of Hennepin and Ramsey Counties through 20 contracts.
- Contracted regular routes – small, medium, and large regular-route bus transit service through 12 contracts and the regional vanpool program (Van GO), which focuses in areas without regular-route transit or for commuters not served by regular-route transit.
- Suburban transit authorities – twelve communities (formerly referred to as the "Opt-Out" programs) that have chosen to provide their own transit service. Two consortiums have been created and four cities provide transit service through contracts with various private, public and nonprofit entities. The Council passes-through operating funds to the suburban transit programs from the state Motor Vehicle Sales Tax fund.

Transportation Division – Metro Transit: Key 2007 work program activities for Metro Transit include the following:

- **Continuing to increase transit ridership and improve service.**

Metro Transit ended 2006 with an estimated 73.8 million rides – the highest annual ridership since 1984 – demonstrating a clear recovery from a steep decline in 2005 due to a work stoppage.

Metro Transit is always working to attract more new customers and to retain and better satisfy existing customers. In 2007, key enhancements will include the system-wide launch and use of the new Go-To fare collection system that will make boarding faster and easier. Additionally, this customer-oriented fare paying option will integrate with the Hiawatha Light Rail system and streamline administrative and accounting processes.

Metro Transit's MetroPass program, which allows employers to subsidize annual transit passes for all of their employees, has enrolled 141 companies with over 23,000 active MetroPass employees as of August 2006. Metro Transit projects ridership in 2007 of nearly 6.6 million annual rides with the MetroPass program.

In addition, Metro Transit and the University of Minnesota have negotiated the U-Pass transit program, which offers students unlimited rides on all metro area bus and rail service at a deep discount. Ridership in 2007 is projected to be nearly 4 million annual rides from the program.

Although federal funding will end in June 2007, Metro Transit will continue the service developed as part of a restructured route network serving the cities of Minneapolis, St. Paul, Edina, and Bloomington (Sector 5). The effort includes a major improvement in local grid regular routes, expanded peak-only commuter express service tied to expanded park-and-ride facilities in three congested highway corridors and improved reverse-commute transit.

As part of its ongoing review of best service alternatives, Metro Transit will complete additional sector studies to ensure that communities are receiving the types and quantity of transit service that best meet their mobility needs.

- **Making the bus fleet more “green.”**

In 2003, three hybrid-electric buses were introduced to Metro Transit's fleet. Over the next five years Metro Transit will replace its retiring buses with 150 diesel-electric hybrid buses. In addition, 164 standard-engine bus replacements will incorporate the latest engine technologies.

Metro Transit will also double the biodiesel content of its fuel supply to 10 percent in mid-2007. An operational test of 20 percent biodiesel has been initiated in a small sub-fleet of buses to determine the feasibility of burning even more bio-additives so that emissions and the use of nonrenewable fossil fuel will be further reduced.

- **Maintaining public and support facilities.**

Metro Transit is responsible for the maintenance of both publicly used facilities and bus-related facilities. Coverage within the seven-county metro area includes conventional bus shelters, large custom shelters, transit centers and park-and-ride lots. The maintenance work is conducted around the clock, every day of the week.

Community Development Division: The major 2007 initiatives for this division are:

- Providing strategic leadership in implementing the Council's *2030 Regional Development Framework*, with a focus on reviewing updates of local comprehensive plans required by state statute.
- Reviewing and revising division administrative procedures to ensure that the stakeholders and the general public can readily access information they need.

- Coordinating with local governments in preparing submittals of comprehensive plan updates, due in 2008.
- Working with local communities to identify ways that official controls and procedures can ensure that land development is consistent with adopted plans and available infrastructure capacity.
- Identifying opportunities for local governments to use the digital *Natural Resources Inventory and Assessment* in their land-use planning.
- Collaborating with local jurisdictions to identify ways local plans and official controls can provide for a variety of housing.
- Working in partnership with local units of government and other agencies to implement the Metropolitan Livable Communities Act.
- Providing analysis for updates to the Council's regional policy plans.
- Reporting on the Council's progress in achieving benchmarks specified in the Council's *2030 Regional Development Framework*, recommending revisions to existing ones as appropriate.
- Continuing ongoing communication with counties and other units adjacent to and beyond the seven-county region.

Appendix D. 2006 Legislative Program

The Metropolitan Council's legislative proposals for the 2007 session are still under development as of Jan. 15, 2007. The Council is working with the Governor's office and the state departments on proposals regarding appropriations, bonding, policy issues and statutory housekeeping matters.

**Appendix E. Plans, Projects and Applications Submitted to the
Metropolitan Council, January 1 through December 31, 2006**

Appendix E Contents

- Federal Grant and Loan Requests
 - U.S. Environmental Protection Agency
 - U.S. Dept. of Agriculture
 - U.S. Department of Transportation
- Independent and Metropolitan Agency Plans and Programs
 - Water Management Plans
 - Watershed District Plans
- Local Government Plans and Projects
 - Comprehensive Plan Amendments
 - Revised Comprehensive Plans
 - Water Supply Plans
 - Minnesota Municipal Board Annexations
- Miscellaneous Reviews
 - Housing Bond Plans and Programs
 - Regional Park Master Plans and Budgets
 - Solid Waste Plans and Reports
 - Special Permits
 - Special Transportation Projects
 - State and Federal Assessments and Statements
- State Grant and Loan Requests

FEDERAL GRANT AND LOAN REQUESTS

U.S. Environmental Protection Agency

Storm Sewers

<i>Referral</i>	<i>Applicant/Description</i>	<i>Council Action</i>
19863-1	BLAINE STORMWATER POLLUTION PREVENTION PROGRAM 2006	
19865-1	INDEPENDENCE CITY GENERAL STORMWATER PERMIT APPLICATION	

U.S. Department of Agriculture

Housing Programs

<i>Referral</i>	<i>Applicant/Description</i>	<i>Council Action</i>
19767-1	PLYMOUTH PLYMOUTH HOUSING PROGRAM 2006	
19830-1	COTTAGE GROVE HOUSING PROGRAM 2006, HADLEY AVENUE SOUTH	Favorable
19893-1	ST. PAUL / MINNEAPOLIS TORRE DE SAN MIGUEL HOMES, WESTMINSTER PLACE & VISTA PROJECTS	Favorable
19907-2	WAYZATA AMENDED AND RESTATED HOUSING PROGRAM	Favorable
19919-1	STILLWATER ORLEANS HOMES LIMITED PARTNERSHIP PROJECT	Favorable

U.S. Department of Transportation

Airport Program

<i>Referral</i>	<i>Applicant/Description</i>	<i>Council Action</i>
19680-1	MINNESOTA DEPARTMENT OF TRANSPORTATION INT'L ECONOMIC DEVELOPMENT ZONE & REGIONAL DISTRIB. CENTER SITE SELECTION APPPLICATION	Favorable
19829-1	METROPOLITAN AIRPORT COMMISSION PRELIMINARY 2007-2013 CAPITAL IMPROVEMENT PROGRAM	
19891-1	METROPOLITAN AIRPORTS COMMISSION SEVEN-YEAR CAPITAL IMPROVEMENT PROGRAM 2007-2013	

INDEPENDENT AND METROPOLITAN AGENCY PLANS AND PROGRAMS**Water Management Plans**

Referral	Applicant/Description	Council Action
19675-1	BELLE PLAINE SURFACE WATER MANAGEMENT PLAN 2005	
19681-1	JORDAN SURFACE WATER MANAGEMENT PLAN	Favorable
19739-1	CHANHASSEN WATER MANAGEMENT PLAN	
19748-1	COTTAGE GROVE SURFACE WATER MANAGEMENT PLAN 2006	
19750-1	NINE MILE CREEK WATERSHED DISTRICT DRAFT 509 WATER MANAGEMENT PLAN	
19768-1	WEST ST. PAUL DRAFT SURFACE WATER MANAGEMENT PLAN	
19771-1	MINNEAPOLIS DRAFT SURFACE WATER MANAGEMENT PLAN	
19782-1	VADNAIS HEIGHTS WATER MANAGEMENT PLAN	Favorable
19792-1	APPLE VALLEY SURFACE WATER MANAGEMENT PLAN 2006	
19792-2	APPLE VALLEY SURFACE WATER MANAGEMENT PLAN 2006	
19808-1	SHAKOPEE COMPREHENSIVE WATER MANAGEMENT PLAN 2006	
19814-1	ST. PAUL SURFACE WATER MANAGEMENT PLAN	
19889-1	EAGAN STORMWATER MANAGEMENT PLAN 2006	
19890-1	EAGAN WATER QUALITY AND WETLAND MANAGEMENT PLAN 2006	
19894-1	SAVAGE COMPREHENSIVE WATER RESOURCE MANAGEMENT PLAN 2006	

INDEPENDENT AND METROPOLITAN AGENCY PLANS AND PROGRAMS

Watershed District Plans

<i>Referral</i>	<i>Applicant/Description</i>	<i>Council Action</i>
19709-1	UPPER RUM RIVER WATERSHED MANAGEMENT ORGANIZATION WATERSHED MANAGEMENT PLAN	
19741-1	GUN CLUB LAKE WATERSHED MANAGEMENT ORGANIZATION SECOND GENERATION PLAN	
19760-1	BROWN'S CREEK WATERSHED DISTRICT THIRD GENERATION WATERSHED MANAGEMENT PLAN 2006	
19774-1	MISSISSIPPI WATERSHED MANAGEMENT ORGANIZATION DRAFT 2006 AMENDED VERSION	
19783-1	RICE CREEK WATERSHED DISTRICT RESOURCES MGMT. PLAN ALTERNATIVE REPAIR – DITCH 53-62 2006	
19786-1	RAMSEY-WASHINGTON METRO WATERSHED DISTRICT WATERSHED MANAGEMENT PLAN 2006-2016	
19789-1	SOUTH WASHINGTON WATERSHED DISTRICT WATERSHED PLAN UPDATE 2006	
19806-1	UPPER RUM RIVER WATERSHED MANAGEMENT ORGANIZATION PLAN UPDATE 2006	
19843-1	NINE MILE CREEK WATERSHED DISTRICT PLAN 2006	
19848-1	BASSETT CREEK WATERSHED MANAGEMENT COMMISSION MINOR AMENDMENT	
19849-1	SHINGLE CREEK & WEST MISSISSIPPI WATERSHED MGMT. COMMISSION SECOND GENERATION MAJOR PLAN AMENDMENT PROPOSAL	
19849-2	SHINGLE CREEK & WEST MISSISSIPPI WATERSHED MGMT. COMMISSION AMENDMENT TO THE SECOND GENERATION PLAN	
19850-1	MISSISSIPPI WATERSHED MANAGEMENT ORGANIZATION SECOND DRAFT 2006 VERSION	
19851-1	BROWN CREEK WATERSHED DISTRICT WATERSHED MANAGEMENT PLAN DRAFT THIRD GENERATION	
19853-1	MINNEHAHA CREEK WATERSHED DISTRICT DRAFT COMPREHENSIVE WATER RESOURCES PLAN 2006	
19857-1	RILEY-PURGATORY-BLUFF CREEK WATERSHED DISTRICT AMENDMENT TO APPROVE AND ADOPT WATER MGMT. PLAN 2006	
19912-1	RAMSEY-WASHINGTON METRO WATERSHED DISTRICT DRAFT WATERSHED MANAGEMENT PLAN 2006	

LOCAL GOVERNMENT PLANS AND PROJECTS

Comprehensive Plan Amendments

<i>Referral</i>	<i>Applicant/Description</i>	<i>Council Action</i>
1800-7	ROBBINSDALE PEMNAR PROPERTIES, 4150 REGENT AVE. N. - CHANGE TO HIGH DENSITY - .51 ACRE	
14835-11	STILLWATER LIBERTY WEST - 8 ACRES	
14835-12	STILLWATER BROWN'S CREEK RESERVE - 8.9 ACRES	
16086-5	AFTON TEXT AMENDMENT AND LAND-USE CHANGE TO INDUSTRIAL - 70 ACRES	Favorable
16086-6	AFTON TEXT AMENDMENT TO AGRICULTURAL AREA - 8,320 ACRES	Favorable
16243-10	RICHFIELD I-494 CORRIDOR - ADD TO PLNG. DISTRICT - 135 ACRES	Favorable
16248-20	FARMINGTON SUNRISE PONDS - 8.07 ACRES	Favorable
16248-21	FARMINGTON REGAN PROPERTY - 7.05 ACRES	Favorable
16248-22	FARMINGTON NEW FARMINGTON HIGH SCHOOL - 110 ACRES	Favorable
16248-23	FARMINGTON VERMILLION TRAIL 1ST ADDITION - 1.15 ACRES	Favorable
16248-24	FARMINGTON FAIRHILL 2020 THOROUGHFARE PLAN - 119 ACRES	
16294-12	HUGO LEROUX PROPERTY MUSA AMENDMENT - 290 ACRES	Favorable
16335-7	BAYTOWN TWP G.V. PROPERTIES - 7.42 ACRES	
16367-13	MINNEAPOLIS INCORPORATE MISSISSIPPI RIVER CRITICAL AREA - 3,405.8 ACRES	
16397-12	MINNEAPOLIS SOUTHEAST MPLS. INDUSTRIAL (SEMI/BRIDAL VEIL AREA)	Favorable
16483-10	WATERTOWN ROSEWOOD ESTATES - 9.9 ACRES	Favorable
16500-11	CHANHASSEN BLUFF CREEK TWIN HOMES - 10.3 ACRES	Favorable
16500-12	CHANHASSEN PIONEER PASS - 43 ACRES	Favorable

LOCAL GOVERNMENT PLANS AND PROJECTS

Comprehensive Plan Amendments

<i>Referral</i>	<i>Applicant/Description</i>	<i>Council Action</i>
16500-13	CHANHASSEN CHESMAR FARMS - 34.5 ACRES	
16535-3	LILYDALE LILYDALE TENNIS CLUB REDEVELOPMENT AREA - 7.1 ACRES	Favorable
16535-4	LILYDALE CRITICAL AREA/ZONING ORDINANCE AMENDMENT	
16745-6	LONG LAKE BILLY'S LIGHTHOUSE CHANGE FROM COMMERCIAL TO MULTIPLE FAMILY - 2/39 ACRE	Favorable
16797-3	WILLERNIE REZONE SMALL PROPERTY FROM COMMERCIAL TO PUD ALLOW 9-UNIT TOWNHOUSE	Favorable
16889-3	MINNETONKA GLEN LAKE REDEVELOPMENT - 7.6 ACRES	Favorable
16907-14	BURNSVILLE PLOWSHARE DEVELOPMENT FOR PORTION BUCK HILL - 26.1 ACRES	Favorable
16907-15	BURNSVILLE WOODBROOKE - 3.38 ACRES	Favorable
16907-16	BURNSVILLE CRYSTAL LAKE CEMETERY - 8.0 ACRES	Favorable
16907-17	BURNSVILLE LANDS EAST - 245 ACRES	Favorable
16907-18	BURNSVILLE PLOWSHARE DEVELOPMENT FOR PARCEL ON BURNHAVEN DR. - 2.0 ACRES	Favorable
16907-19	BURNSVILLE GATEWAY DESIGN GUIDELINES - 750 ACRES	Favorable
16907-20	BURNSVILLE 3.62 ACRES CHANGE TO OFFICE & INDUSTRIAL PARK	Favorable
16907-21	BURNSVILLE EARLEY LAKE OFFICE PARK II - .56 ACRES	Favorable
16907-22	BURNSVILLE LAND-USE CHANGE TO COMMERCIAL, RECREATION, BUSINESS - 362 ACRES	
16941-3	NEW HOPE LAND USE CHANGE - 71.5 ACRES	Favorable
16946-13	WACONIA LEGACY VILLAGE - 85 ACRES	Favorable

LOCAL GOVERNMENT PLANS AND PROJECTS**Comprehensive Plan Amendments**

Referral	Applicant/Description	Council Action
16958-15	LAKEVILLE PERMANENT RURAL TO MUSA - 1 ACRE	Favorable
16958-16	LAKEVILLE ST. JOHN'S LUTHERAN CHURCH MUSA AMENDMENT - 17 ACRES	Favorable
16958-17	LAKEVILLE TRINITY EVANGELICAL FREE CHURCH MUSA AMENDMENT - 17.6 ACRES	Favorable
16958-18	LAKEVILLE CRESCENT RIDGE 2ND SECOND ADDITION - 18 ACRES	Favorable
16959-10	CARVER CITY GROVE AT SPRING CREEK - 45.58 ACRES	Favorable
16959-11	CARVER CITY GLEN AT SPRING CREEK - 40.6 ACRES	Favorable
16963-18	APPLE VALLEY MT. OLIVET ADDITION - 2.29 ACRES	Favorable
16963-19	APPLE VALLEY BGH ESTATES LAND-USE CHANGE - .3 ACRES	
16999-10	ROSEMOUNT CO. RD. 42, US 52 INDUSTRIAL - MUSA - 1,092 ACRES	Favorable
16999-11	ROSEMOUNT EVERMOOR INNISFREE - 3.8 ACRES	Favorable
16999-12	ROSEMOUNT FLINT HILLS - 65.4 ACRES	Favorable
16999-13	ROSEMOUNT WACHTER LAKE, CLARET SPRINGS, CARROUSEL PLAZA - 35.85 ACRES	Favorable
16999-14	ROSEMOUNT BARD' S CROSSING - 7.72 ACRES	Favorable
16999-15	ROSEMOUNT FAMILY TOWNHOUSES - 4.8 ACRES	Favorable
16999-16	ROSEMOUNT OLD CO. RD. 38 - 13.5 ACRES	Favorable
16999-17	ROSEMOUNT CO. RD. 46 AND HWY 3 - 92 ACRES	Favorable
17012-6	FOREST LAKE SOUTHWEST DEVELOPMENT AREA - 591 ACRES	Favorable
17012-7	FOREST LAKE WATER SUPPLY PLAN	

LOCAL GOVERNMENT PLANS AND PROJECTS

Comprehensive Plan Amendments

<i>Referral</i>	<i>Applicant/Description</i>	<i>Council Action</i>
17012-8	FOREST LAKE GATEWAY GREEN - 5 ACRES	Favorable
17034-29	PRIOR LAKE SHEPHERD'S PATH CAMPUS - 4.77 ACRES	Favorable
17034-30	PRIOR LAKE CARDINAL DEVELOPMENT - 18 & CSAH 42 - 7.5 ACRES	Favorable
17055-15	BLAINE SHADE TREE COVE 3RD ADDITION MUSA EXPANSION - 6.45 ACRES	Favorable
17055-16	BLAINE LEGACY VILLAGE ON MAIN MUSA EXPANSION - 39.24 ACRES	Favorable
17096-21	OAK GROVE COONS WEST SIDE 2ND ADDITION - 2 ACRES	Favorable
17096-22	OAK GROVE DELONG FAMILY PROJECT RESUBMITTED - 25 ACRES	
17096-23	OAK GROVE SWAN LAKE PRESERVE - 172 ACRES RESIDENTIAL	
17096-24	OAK GROVE GARDAS GROVE 2ND ADDITION - 20 ACRES	
17974-26	ST. LOUIS PARK LAND-USE CHANGE - EDGEBROOK DRIVE - 31 ACRES	Favorable
17974-27	ST. LOUIS PARK LAND-USE CHANGE - MONTEREY AVE. SOUTH - .35 ACRES	Favorable
17974-28	ST. LOUIS PARK LAND-USE CHANGE - CEDAR LAKE ROAD - 1.16 ACRES	Favorable
17974-29	ST. LOUIS PARK HIGHWAY 7 CORPORATION CENTER - 9.63 ACRES	Favorable
17974-30	ST. LOUIS PARK CARPENTER PARK - 7.3 ACRES	
17974-31	ST. LOUIS PARK 4525 MORNINGSIDE RD. AND BROWN LAKE AVE. - .05 ACRES	
17974-32	ST. LOUIS PARK LAND-USE CHANGE - 2600 NATCHEZ AVE SOUTH - .03 ACRES	
18000-6	ROBBINSDALE ROBBINS WAY SENIOR HOUSING - 0.9 ACRES	Favorable
18000-7	ROBBINSDALE LAND-USE CHANGE - PENMAR PROPERTIES - .51 ACRES	Favorable

LOCAL GOVERNMENT PLANS AND PROJECTS

Comprehensive Plan Amendments

<i>Referral</i>	<i>Applicant/Description</i>	<i>Council Action</i>
18028-9	EMPIRE TWP. AMENDMENT 2006-1 - 53 ACRES	Favorable
18028-10	EMPIRE MINERAL EXTRACTION OVELAY – 1,600 ACRES	
18058-5	BROOKLYN PARK NORTHERN AREA - 1,200 ACRES	Favorable
18080-5	WEST ST. PAUL SHERMAN 11 - 2.84 ACRES	Favorable
18081-8	ANOKA CITY AMENDMENT TO PARK RECREATION SECTION - 3.1 ACRES	Favorable
18081-9	ANOKA CITY HIGH DENSITY TO LOW DENSITY - 1.62 ACRES	Favorable
18081-10	ANOKA CITY LAND-USE CHANGE - CENTRAL BUSINESS DISTRICT - .43 ACRES	Favorable
18103-15	BLOOMINGTON WALSER AUTO - 4 ACRES	
18103-16	BLOOMINGTON LAND-USE CHANGE - PORTLAND MOBILE HOME PARK/PORTLAND COMMONS - 5.9 ACRES	
18103-17	BLOOMINGTON LAND-USE CHANGE - SURMADERS/LAUKKA JARVIS, INC. - 27.25 ACRES	
18103-18	BLOOMINGTON LAND-USE CHANGE - WALSER AUTOMOTIVE - 4.0 ACRES	
18105-5	CHASKA CHEVALLE EXPANSION - STAGE II DEVELOPMENT AREA 2005-10 - MUSA EXPANSION - 276 ACRES	Favorable
18105-6	CHASKA SHEPHERD'S COVE - 15.8 ACRES	Favorable
18119-2	HASSAN TOWNSHIP PARKS, TRAIL AND GREENING PLAN	Favorable
18149-2	NEW BRIGHTON REDEVELOPMENT - TIMBERCRAFT ENTERPRISE - .70 ACRES	Favorable
18154-3	MENDOTA HEIGHTS EXCESS CEMETERY LAND - 68 ACRES	
18154-4	MENDOTA HEIGHTS PAR 3 GOLF COURSE ZONED R-1 - 17.5 ACRES	
18158-23	ANDOVER TRANSITIONAL COMMERCIAL/INDUSTRIAL LAND-USE DISTRICT - 28 ACRES	Favorable

LOCAL GOVERNMENT PLANS AND PROJECTS**Comprehensive Plan Amendments**

Referral	Applicant/Description	Council Action
18158-24	ANDOVER WDE CLOSED LANDFILL CHANGE - 14.5 ACRES	Favorable
18160-24	RAMSEY CITY MEADOWS - 50 ACRES	Favorable
18160-25	RAMSEY CITY AMBER RIDGE 2ND ADDITION - 2 ACRES	Favorable
18163-7	HOPKINS 106 JACKSON AVE. N. - .39 ACRES	Favorable
18166-5	COON RAPIDS HARTFORD GROUP INC. - 43.36 ACRES	Favorable
18166-6	COON RAPIDS COON RAPIDS - FROM CONSERVANCY TO LOW-DENSITY RESIDENTIAL - 13.3 ACRES	
18170-11	COTTAGE GROVE SUMMERHILL - 3.16 ACRES	Favorable
18171-6	WHITE BEAR LAKE CENTERVILLE ROAD LAND-USE AMENDMENT - 1.83 ACRES	
18171-7	WHITE BEAR LAKE CENTERVILLE ACCESS ROAD - 17 ACRES	
18181-10	COLUMBIA HEIGHTS FROM COMMERCIAL TO HIGH DENSITY - 2.47 ACRES	
18208-27	PLYMOUTH CSM CORP. - REGUIDE 4.9 ACRES	Favorable
18208-28	PLYMOUTH DEZIEL SUBDIVISION - 1.52 ACRES	Favorable
18208-29	PLYMOUTH COTTONWOOD PROPERTIES - 1.38 ACRES	
18241-13	SHAKOPEE SHAKOPEE LAND-USE PROPOSAL FOR JACKSON TWP. - 2,209 ACRES	No Comment by Council
18241-14	SHAKOPEE LAND-USE CHANGE - SOUTHEAST SHAKOPEE - 1,372 ACRES	Favorable
18241-15	SHAKOPEE CJM PROPERTIES - 4.4 ACRES	Favorable
18243-8	CENTERVILLE AMENDMENT 2006-1 - 26.9 ACRES	Favorable
18243-9	CENTERVILLE AMENDMENT 2006-2 - 46.16 ACRES	Favorable

LOCAL GOVERNMENT PLANS AND PROJECTS**Comprehensive Plan Amendments**

Referral	Applicant/Description	Council Action
18248-17	HASTINGS LAND-USE CHANGE - 17TH ST. WEST - .29 ACRES	Favorable
18248-18	HASTINGS REZONE TO URBAN RESIDENTIAL - 46 ACRES	
18274-17	EAGAN LAND-USE CHANGE TO HIGH DENSITY - BASSETT PROPERTY - 5 ACRES	Favorable
18274-18	EAGAN NATURES POINT - 4.34 ACRES	Favorable
18287-5	MOUND AMENDMENT TO BARTLETT BLVD. - 1.7 ACRES	Favorable
18304-16	MAPLE GROVE PETERSEN'S OAK HILL (REYNOLDS ANNEXATION) - 1.95 ACRES	Favorable
18304-17	MAPLE GROVE 2006 AMENDMENTS - VARIOUS PROJECTS - 248.2 ACRES	Favorable
18358-9	ROGERS NE. CORNER OF CITY - 43 ACRES FROM HASSAN TWP.	Favorable
18392-6	ORONO 875 WAYZATA BLVD. - 10.4 ACRES	
18452-11	WOODBURY RIDGESTONE OF WOODBURY - 50 ACRES	Favorable
18452-12	WOODBURY LAND-USE CHANGE - VACANT COMMERCIAL AND INDUSTRIAL - 1,409 ACRES	
18495-32	INVER GROVE HEIGHTS 2.4 ACRES	Favorable
18495-33	INVER GROVE HEIGHTS CAHILL SOUTH MUSA EXPANSION - 71.94 ACRES	Favorable
18495-34	INVER GROVE HEIGHTS INVER GROVE HEIGHTS COMFORTS OF HOME - 3.7 ACRES	
18586-9	LINO LAKES HARDWOOD CREEK LLC SITE - WEST SIDE - 370 ACRES	Favorable
18748-4	CORCORAN BUSINESS PARK - REGUIDE 1 ACRE	Favorable
18795-11	EDEN PRAIRIE AGING JOYFULLY - 1.61 ACRES	Favorable
18795-12	EDEN PRAIRIE HORIZON PLACE - 1.74 ACRES	Favorable

LOCAL GOVERNMENT PLANS AND PROJECTS

Comprehensive Plan Amendments

<i>Referral</i>	<i>Applicant/Description</i>	<i>Council Action</i>
18795-13	EDEN PRAIRIE LONE OAK CENTER - 5.27 ACRES	Favorable
18795-14	EDEN PRAIRIE BANE BERRY HOLLOW - 2.06 ACRES	Favorable
18795-15	EDEN PRAIRIE GANDER MOUNTAIN - 4.69 ACRES	Favorable
18795-16	EDEN PRAIRIE GUIDE PLAN TEXT AMENDMENT FOR TOWN CENTER	Favorable
18895-19	EDEN PRAIRIE GUIDE PLAN TEXT AMENDMENT TO ADD GOLF COURSES AS LAND USE, ETC.	
18979-2	WATERTOWN TWP. CARVER CO. HIGH-AMENITY AREA CHANGE - 10 ACRES	Favorable
19306-4	JORDAN SAWMILL WOODS - 54 ACRES	Favorable
19306-5	JORDAN STONEBRIDGE DEVELOPMENT - 39 ACRES	Favorable
19306-6	JORDAN ARBORVIEW DEVELOPMENT - 42 ACRES	Favorable
19306-7	JORDAN BRIDLE CREEK S-6 ADDITIONS - 41.51 ACRES	Favorable
19727-1	VERMILLION LAND-USE CHANGE - 3.22 ACRES FROM POST 2020 DEVELOPMENT	Favorable
19744-1	EAST BETHEL EAST BETHEL COMPREHENSIVE PLAN UPDATE	Unfavorable
19779-1	LAKEVILLE UPDATE OF PARKS TRAILS AND OPEN SPACE SYSTEM THROUGH 2030	Favorable
19785-1	FARMINGTON NEW FARMINGTON HIGH SCHOOL	Favorable
19834-2	EAGAN NEGATIVE DECLARATION ON LONE OAK BUSINESS CAMPUS	Information Only
19869-1	CIRCLE PINES WATER EMERGENCY AND CONSERVATION PLAN 2006	
19872-1	MAHTOMEDI PARK MASTER PLAN UPDATE 2006-2026	

LOCAL GOVERNMENT PLANS AND PROJECTS

Revised Comprehensive Plans

<i>Referral</i>	<i>Applicant/Description</i>	<i>Council Action</i>
18457-9	MINNETRISTA COMPREHENSIVE PLAN UPDATE - NEW REVISION	Favorable
19840-1	JORDAN COMPREHENSIVE PLAN UPDATE 2006	

LOCAL GOVERNMENT PLANS AND PROJECTS

Water Supply Plans

<i>Referral</i>	<i>Applicant/Description</i>	<i>Council Action</i>
19353-2	SHAKOPEE WATER PLAN 2006	
19708-1	SCOTT COUNTY WATER PLAN	
19720-1	BROOKLYN CENTER LOCAL WATER MANAGEMENT	
19726-1	ROGERS COMPREHENSIVE WATER SYSTEM PLAN UPDATE 2005	
19804-1	ANDOVER WATER EMERGENCY AND CONSERVATION PLAN 2006	
19835-1	BROOKLYN CENTER WATER SUPPLY SYSTEM	
19838-1	CHAMPLAIN WATER SUPPLY PLAN 2006	
19845-1	ST. PAUL WATER EMERGENCY AND CONSERVATION PLAN 2006	
19846-1	INVER GROVE HEIGHTS SECOND GENERATION WATER RESOURCES MANAGEMENT PLAN 2006	
19852-1	BLAINE WATER CONSERVATION AND EMERGENCY PLAN	
19866-1	HAMBURG WATER SUPPLY PLAN 2006	
19867-1	MAHTOMEDI WATER EMERGENCY AND CONSERVATION PLAN 2006	
19868-1	FOREST LAKE WATER EMERGENCY AND CONSERVATION PLAN 2006	
19870-1	WATERTOWN WATER EMERGENCY AND CONSERVATION PLAN 2006	
19873-1	NORWOOD/YOUNG AMERICA WATER EMERGENCY AND CONSERVATION PLAN 2006	
19874-1	SHOREWOOD WATER EMERGENCY AND CONSERVATION PLAN 2006	
19875-1	MAYER WATER EMERGENCY AND CONSERVATION PLAN 2006	
19876-1	MOUND WATER EMERGENCY AND CONSERVATION PLAN 2006	

LOCAL GOVERNMENT PLANS AND PROJECTS

Water Supply Plans

<i>Referral</i>	<i>Applicant/Description</i>	<i>Council Action</i>
19877-1	MAPLE GROVE WATER EMERGENCY AND CONSERVATION PLAN 2006	
19878-1	SAVAGE WATER EMERGENCY AND CONSERVATION PLAN 2006	
19885-1	COTTAGE GROVE WATER EMERGENCY AND CONSERVATION PLAN 2006	
19886-1	EXCELSIOR WATER EMERGENCY AND CONSERVATION PLAN 2006	
19887-1	CHASKA WATER EMERGENCY AND CONSERVATION PLAN 2006	
19895-1	FARMINGTON WATER EMERGENCY AND CONSERVATION PLAN	
19897-1	LAKEVILLE WATER EMERGENCY AND CONSERVATION PLAN	
19902-1	SPRING LAKE PARK WATER EMERGENCY AND CONSERVATION 2006	
19914-1	WOODBURY WATER EMERGENCY AND CONSERVATION PLAN 2006	
19915-1	MINNETRISTA WATER EMERGENCY AND CONSERVATION PLAN 2006	
19916-11	BELLE PLAINE WATER EMERGENCY AND CONSERVATION PLAN 2006	
19920-1	APPLE VALLEY WATER EMERGENCY AND CONSERVATION PLAN 2006	
19921-1	CHANHASSEN WATER EMERGENCY AND CONSERVATION PLANS 2006	
19923-1	BLOOMINGTON WATER EMERGENCY AND CONSERVATION PLANS	
19926-1	LAKE ELMO WATER EMERGENCY AND CONSERVATION PLAN	
19933-1	ST. PAUL WATER SUPPLY PLAN	

LOCAL GOVERNMENT PLANS AND PROJECTS

Minnesota Municipal Board Actions

Annexation

<i>Referral</i>	<i>Applicant/Description</i>	<i>Council Action</i>
19440-2	MUNICIPAL BOUNDARY ADJUSTMENT UNIT DETACHMENT OF LAND FROM GEM LAKE TO VADNAIS HEIGHTS	
19796-1	MUNICIPAL BOUNDARY ADJUSTMENT UNIT ST. FRANCIS ANNEXATION TO BETHEL CITY	
19822-1	MINNESOTA MUNICIPAL BOARD DETACHMENT OF LAND FROM GEM LAKE TO VADNAIS HEIGHTS - SW. CORNER TO WEST	Favorable
19823-1	MINNESOTA MUNICIPAL BOARD DETACHMENT OF LAND FROM GEM LAKE TO VADNAIS HEIGHTS - SW. CORNER TO EAST	Favorable
19824-1	MINNESOTA MUNICIPAL BOARD DETACHMENT OF LAND FROM GEM LAKE TO VADNAIS HEIGHTS - HILLARY FARM ADDITION	Favorable
19825-1	MINNESOTA MUNICIPAL BOARD DETACHMENT OF LAND FROM GEM LAKE TO VADNAIS HEIGHTS - CO.RD. E. - LOTS 5 & 6	Favorable

MISCELLANEOUS REFERRALS**Housing Bond Plans and Programs****Housing Bond Program**

Referral	Applicant/Description	Council Action
18023-2	ROBBINSDALE RESTATED HOUSING BOND PROGRAM - WEST BROADWAY AVE.	Favorable
19021-2	ST. PAUL ST. PAUL GATEWAY APARTMENTS	Favorable
19705-1	MINNEAPOLIS WHITTIER TOWN HOMES - 333 E. 25TH STREET	Favorable
19706-1	MINNEAPOLIS WASHINGTON COURT APTS. - 2101 WASHINGTON ST. NE.	Favorable
19747-1	DAKOTA COUNTY 2006 SINGLE FAMILY PROGRAM	Favorable
19759-1	PRIOR LAKE SHEPHERD'S PATH SENIOR HOUSING PROJECT	Favorable
19772-1	SPRING LAKE PARK SPRING LAKE GARDEN PROJECT	
19791-1	GOLDEN VALLEY CALVARY CENTER APARTMENT	Favorable
19907-1	WAYZATA HAMMER RESIDENCES	Favorable
19909-1	ORONO ORONO WOODS APARTMENT PROJECT	Favorable
19932-1	WOODBURY WOODBURY SENIOR LIVING CAMPUS AND BIRCHWOOD SENIOR LIVING CENTER	

MISCELLANEOUS REFERRALS

Regional Park Master Plans and Budgets

Regional Park Master Plan

<i>Referral</i>	<i>Applicant/Description</i>	<i>Council Action</i>
19718-1	THREE RIVERS PARK DISTRICT LAKE MINNETONKA REGIONAL PARK PLAN	
19719-1	THREE RIVERS PARK DISTRICT SILVERWOOD PARK MASTER PLAN	
19770-1	WASHINGTON COUNTY LAKE ELMO PARK RESERVE MASTER PLAN	
19790-1	SCOTT COUNTY DRAFT SPRING LAKE REGIONAL PARK MASTER PLAN 2006	
19810-1	MINNEAPOLIS ST. ANTHONY PARKWAY REGIONAL PARK MASTER PLAN 2006	
19816-1	CARVER COUNTY SOUTHWEST REGIONAL TRAIL CONNECTION - CHASKA TO VICTORIA 2006	
19844-1	SCOTT COUNTY SPRING LAKE REGIONAL PARK MASTER PLAN REPORT 2006	
19864-1	THREE RIVERS PARK DISTRICT ELM CREEK RESERVE MASTER PLAN 2006	

MISCELLANEOUS REFERRALS

Solid Waste Plans and Reports

Solid Waste Facility Permits

<i>Referral</i>	<i>Applicant/Description</i>	<i>Council Action</i>
19674-1	MINNESOTA POLLUTION CONTROL AGENCY BURNSVILLE SOLID WASTE MANAGEMENT LANDFILL	No Comment by Council
19700-1	MINNESOTA POLLUTION CONTROL AGENCY NRG PROCESSING SOLUTIONS	No Comment by Council
19715-1	MINNESOTA POLLUTION CONTROL AGENCY CARVER TRANSFER STATION - NORWOOD-YOUNG AMERICA	No Comment by Council
19799-1	MINNESOTA POLLUTION CONTROL AGENCY BURNSVILLE SOLID WASTE MANAGEMENT LANDFILL	
19836-1	MINNESOTA POLLUTION CONTROL AGENCY NEWPORT RESOURCE RECOVERY FACILITY	No Comment by Council
19858-1	MINNESOTA POLLUTION CONTROL AGENCY KEITH KRUPENNY AND SON TRANSFER STATION	No Comment by Council
19908-1	MINNESOTA POLLUTION CONTROL AGENCY RANDOLPH TRANSFER STATION	No Comment by Council

MISCELLANEOUS REFERRALS

Solid Waste Plans and Reports

State Disposal System Permit

<i>Referral</i>	<i>Applicant/Description</i>	<i>Council Action</i>
19673-1	MINNESOTA POLLUTION CONTROL AGENCY BETHEL WASTEWATER TREATMENT FACILITY	No Comment by Council
19701-1	MINNESOTA POLLUTION CONTROL AGENCY CARRIAGE STATION W.W.T.F.	No Comment by Council
19731-1	MINNESOTA POLLUTION CONTROL AGENCY HILLCREST COUNTRY ESTATES W.W.T.F.	No Comment by Council
19749-1	MINNESOTA POLLUTION CONTROL AGENCY DEM-CON LANDFILL	No Comment by Council
19757-1	MINNESOTA POLLUTION CONTROL AGENCY MILLER FARMS CLUSTER DEVELOPMENT	No Comment by Council
19781-1	MINNESOTA POLLUTION CONTROL AGENCY SANCTUARY DEVELOPMENT W.W.T.F.	No Comment by Council
19784-1	MINNESOTA POLLUTION CONTROL AGENCY SUNSET SHORES W.W.T.F.	No Comment by Council
19794-1	MINNESOTA POLLUTION CONTROL AGENCY CHS INC. SAVAGE DREDGE	No Comment by Council
19795-1	MINNESOTA POLLUTION CONTROL AGENCY MAC - HOLMAN FIELD - COMPENSATORY EXCAVATION DREDGE PROJECT	No Comment by Council
19797-1	MINNESOTA POLLUTION CONTROL AGENCY ROCKPORT CHURCH W.W.T.F. - LAKE ELMO	No Comment by Council
19807-1	MINNESOTA POLLUTION CONTROL AGENCY ST. FRANCIS W.W.T.F.	No Comment by Council
19826-1	MINNESOTA POLLUTION CONTROL AGENCY BIG MARINE LAKE DEVELOPMENT	No Comment by Council
19827-1	MINNESOTA POLLUTION CONTROL AGENCY HENNEPIN COUNTY PUBLIC WORKS	No Comment by Council
19831-1	MINNESOTA POLLUTION CONTROL AGENCY MAC - HOLMAN FIELD - COMPENSATORY EXCAVATION DREDGE PROJECT	No Comment by Council
19841-1	MINNESOTA POLLUTION CONTROL AGENCY FIELDS OF ST. CROIX W.W.T.F.	No Comment by Council
19892-1	MINNESOTA POLLUTION CONTROL AGENCY CEDAR CREEK COMMUNITY SCHOOL	No Comment by Council
19918-1	MINNESOTA POLLUTION CONTROL AGENCY FIELDS OF ST. CROIX	No Comment by Council

MISCELLANEOUS REFERRALS

Special Permits

Army Corps of Engineers Permits

<i>Referral</i>	<i>Applicant/Description</i>	<i>Council Action</i>
19679-1	U.S. ARMY CORPS OF ENGINEERS DISCHARGE DREDGE AND FILL WETLANDS - 20TH AVE. AND 21ST - CENTERVILLE	No Comment by Council
19684-1	U.S. ARMY CORPS OF ENGINEERS DISCHARGE AND FILL 30.49 ACRES - BLAINE AIRPORT	No Comment by Council
19685-1	U.S. ARMY CORPS OF ENGINEERS CONSTRUCT ROADWAYS, DRIVEWAYS AND BUILDING FOR RESIDENTIAL HOUSING - 125 ACRES	No Comment by Council
19689-1	U.S. ARMY CORPS OF ENGINEERS PLACE FILL IN WETLANDS ADJACENT TO MINN. RIVER - PART OF DEVELOPMENT AT KREY LAKE	No Comment by Council
19711-1	U.S. ARMY CORPS ENGINEERS FILL DREDGE MATERIAL - PAINTER CREEK MINNETRISTA	No Comment by Council
19714-1	U.S. ARMY CORPS OF ENGINEERS DREDGE AND FILL WETLANDS - THE RUSHES IN BLAINE - 5.45 ACRES	No Comment by Council
19717-1	U.S. CORPS OF ARMY ENGINEERS DISCHARGE DREDGE ADJACENT TO RILEY CRK. AS PART OF LAKE RILEY AND MARSH LAKE	No Comment by Council
19723-1	U.S. ARMY CORPS OF ENGINEERS DISCHARGE DREDGE - HARPER'S WOODS	No Comment by Council
19728-1	U.S. ARMY CORPS OF ENGINEERS FILL WETLAND - MIXED-USE DEVELOPMENT - LEGACY VILLAGE	No Comment by Council
19753-1	U.S. ARMY CORPS OF ENGINEERS BLAINE PONDS - WETLAND FILL FOR STORM WATER - 5.79 ACRES	No Comment by Council
19762-1	U.S. ARMY CORPS OF ENGINEERS DISCHARGE AND DREDGE WETLANDS - SARAH CREEK	No Comment by Council
19800-1	U.S ARMY CORPS OF ENGINEERS MULLER FAMILY THEATERS - MAPLE LAKE	No Comment by Council
19811-1	U.S. ARMY CORPS OF ENGINEERS PIKE LAKE ROAD EXTENSIONS	No Comment by Council
19837-1	U.S. ARMY CORPS OF ENGINEERS DITCH 453-62 - RICE CREEK WATERSHED - BLAINE	No Comment by Council
19839-1	U.S. ARMY CORPS OF ENGINEERS ADDITIONAL PIPELINE CAPACITY	No Comment by Council
19903-1	U.S. ARMY CORPS OF ENGINEERS MINNESOTA PIPELINE COMPANY	Unfavorable
19906-1	U.S. ARMY CORPS OF ENGINEERS WETLANDS AND WILDLIFE CONSULTING, INC.	No Comment by Council

MISCELLANEOUS REFERRALS

Special Permits

National Pollution Discharge Elimination Permits

<i>Referral</i>	<i>Applicant/Description</i>	<i>Council Action</i>
17096-25	MINNESOTA POLLUTION CONTROL AGENCY NEW PRAGUE WASTEWATER TREATMENT FACILITY	No Comment by Council
19707-1	U.S. ENVIRONMENTAL PROTECTION AGENCY SHAKOPEE MDEWAKANTON SIOUX COMMUNITY WATER RECLAMATION FACILITY	No Comment by Council
19732-1	MINNESOTA POLLUTION CONTROL AGENCY FRIDLEY LOCKE PARK FILTRATION WASTE TREATMENT FACILITY	No Comment by Council
19735-1	MINNESOTA POLLUTION CONTROL AGENCY GE OSMONICS, INC.	No Comment by Council
19742-1	MINNESOTA POLLUTION CONTROL AGENCY 3M - ST. PAUL MAIN PLANT - 900 BUSH AVE.	No Comment by Council
19752-1	MINNESOTA POLLUTION CONTROL AGENCY NEWPORT TERMINAL FACILITY	No Comment by Council
19755-1	MINNESOTA POLLUTION CONTROL AGENCY EDINA APPLICATION TO OPERATE THREE POTABLE WATER TREATMENT PLANT FACILITIES	No Comment by Council
19801-1	MINNESOTA POLLUTION CONTROL AGENCY FORD MOTOR CO. - TWIN CITIES ASSEMBLY PLANT	No Comment by Council
19805-1	MINNESOTA POLLUTION CONTROL AGENCY FABCON, INC.	No Comment by Council
19861-1	MINNESOTA POLLUTION CONTROL AGENCY LAKETOWN COMMUNITY W.W.T.F.	No Comment by Council
19871-1	MINNESOTA POLLUTION CONTROL AGENCY RIVERSIDE GENERATING PLANT - 3100 MARSHALL ST. SE.	No Comment by Council
19896-1	MINNESOTA POLLUTION CONTROL AGENCY LSP POWER - COTTAGE GROVE POWER PLANT (COGENTRIX)	No Comment by Council
19900-1	MINNESOTA POLLUTION CONTROL AGENCY CARVER, BEVENS AND SILVER CREEKS - TOTAL MAXIMUM DAILY LOAD	
19901-1	MINNESOTA POLLUTION CONTROL AGENCY TWIN CITY TANNING LLP	No Comment by Council
19904-1	MINNESOTA POLLUTION CONTROL AGENCY NRG ENRGY CENTER - NORTH RIVERFRONT PLANT	No Comment by Council
19917-1	U.S. ARMY CORPS OF ENGINEERS DISCHARGE AND FILL - BLUEGRASS ESTATES - 1.2 ACRES	No Comment by Council
19925-1	MINNESOTA POLLUTION CONTROL AGENCY KURT MANUFACTURING CO.	
19930-1	MINNESOTA POLLUTION CONTROL AGENCY ENERGY PARK UTILITY CO. - ENERGY PARK DRIVE	

MISCELLANEOUS REFERRALS

Special Permits

National Pollution Discharge Elimination Permits

Well Permit

<i>Referral</i>	<i>Applicant/Description</i>	<i>Council Action</i>
18356-3	JORDAN WELLHEAD PROTECTION PLAN PART II REVISED	
19319-2	BROOKLYN PARK WELLHEAD PROTECTION PLAN PART II	
19324-2	SAVAGE WELLHEAD PROTECTION PLAN PART II	
19703-2	CARVER CITY WELLHEAD PROTECTION PLAN PART I	Favorable
19733-1	HOPKINS WELLHEAD PROTECTION PLAN	Information Only
19765-1	CHASKA VICTORIA WELL FIELD WATER SYSTEM STUDY	
19819-1	FOREST LAKE WELLHEAD PROTECTION PLAN 2006	
19832-1	PLYMOUTH WELLHEAD PROTECTION PLAN PART II	
19833-1	CARVER CITY WELLHEAD PROTECTION PLAN PART I	
19898-1	ROBBINSDALE WELLHEAD PROTECTION PLAN PART II	
19898-2	ROBBINSDALE WELLHEAD PROTECTION PLAN PART I	
19924-1	ANDOVER WELLHEAD PROTECTION PLAN PARTS I & II	
19931-1	VADNAIS HEIGHTS WELLHEAD PROTECTION PLAN PART I	

Special Transportation Projects

Controlled Access Highway

<i>Referral</i>	<i>Applicant/Description</i>	<i>Council Action</i>
19913-1	MINNESOTA DEPARTMENT OF TRANSPORTATION TH 36 BETWEEN WHITE BEAR AVE. & TH 120	

MISCELLANEOUS REFERRALS

State and Federal Assessments and Statements

Environmental Assessment Worksheet - State

Referral	Applicant/Description	Council Action
19576-2	HENNEPIN COUNTY FINAL SCOPING DECISION DOCUMENT FOR MINN. URBAN BALLPARK	Information Only
19576-3	HENNEPIN COUNTY AMENDED SCOPING DECISION DOCUMENT – MINN. URBAN BALL PARK	Information Only
19594-2	MAPLE GROVE FINAL COMMENTS - NEGATIVE DECLARATION - FIELDSTONE MEADOWS - 62 ACRES	Information Only
19606-2	ANOKA CITY RESPONSE & COMMENTS - EAW NORTH CENTRAL BUSINESS DISTRICT	Information Only
19649-2	MINNESOTA POLLUTION CONTROL AGENCY NEGATIVE DECLARATION - MALCOLM AVENUE SOLID WASTE TRANSFER FACILITY	Information Only
19650-2	MINNESOTA DEPARTMENT OF NATURAL RESOURCES RECORD OF DECISION - OLD MILL STREAM TRIBUTARY HABITAT	Information Only
19651-3	MINNETRISTA FINAL AUAR FOR PARK COVE AREA - REVISED	Favorable
19665-2	WATERTOWN RECORD OF DECISION - NEGATIVE DECLARATION - DECHO DEVELOPMENT	
19666-2	BLAINE NEGATIVE DECLARATION - THE RUSHES	Information Only
19669-2	CARVER CITY RESPONSE & COMMENTS - GROVE AT SPRING CREEK RESIDENTIAL DEVELOPMENT	Information Only
19676-1	RICHFIELD CEDAR POINT COMMONS - 30 ACRES	Favorable
19676-2	RICHFIELD RECORD OF DECISION - CEDAR POINT	
19682-1	HENNEPIN COUNTY CSAH 61 (SHADY OAK ROAD) IMPROVEMENTS	Favorable
19682-2	HENNEPIN COUNTY FINDINGS/NEG. DECLAR. - CSAH 61 SHADY OAK ROAD IMPROVEMENTS	Information Only
19687-1	BLAINE BLAINE SANITARY SEWER AND WATER MANAGEMENT SECT. B	Favorable
19687-2	MINNESOTA POLLUTION CONTROL AGENCY FINDINGS OF FACTS - BLAINE SANITARY SEWER AND WATER MAIN	Information Only
19688-1	MINNEAPOLIS BENNET LUMBER PARCELS - 3.34 ACRES	Favorable

MISCELLANEOUS REFERRALS

State and Federal Assessments and Statements

Environmental Assessment Worksheet - State

Referral	Applicant/Description	Council Action
19688-2	MINNEAPOLIS NEGATIVE DECLARATION - BENNETT LUMBER PARCELS 1 AND 2	Information Only
19704-1	WACONIA LEGACY VILLAGE OF WACONIA - 72 ACRES	Unfavorable
19704-2	WACONIA NEGATIVE DECLARATION & FINDINGS OF FACTS - LEGACY VILLAGE	
19713-1	HUGO DEL WEBB COMMUNITY - 369 ACRES	Favorable
19713-2	HUGO NEGATIVE RESPONSE TO DEL WEBB	Information Only
19721-1	WAYZATA LOCUST HILLS - 68.6 ACRES	Favorable
19721-2	WAYZATA COMMENTS AND RESPONSES - LOCUST HILL DEVELOPMENT NEGATIVE DECLARATION	Favorable
19724-1	MAPLEWOOD CARVER CROSSING OF MAPLEWOOD SR. HOUSING - 73.2 ACRES	Favorable
19724-2	MAPLEWOOD FINDINGS OF FACT - CARVER CROSSING	Information Only
19725-1	CHASKA THE HAMLETS OF LAKESHIRE RESIDENTIAL EQUESTRIAN - 265 ACRES	Favorable
19729-1	MINNESOTA POLLUTION CONTROL AGENCY SHAKOPEE - CSAH 83 TRUNK SANITARY SEWER	Favorable
19729-2	MINNESOTA POLLUTION CONTROL AGENCY NEGATIVE DECLARATION - CSAH 83 TRUNK SANITARY SEWER	Information Only
19730-1	MINNESOTA POLLUTION CONTROL AGENCY FLINT HILLS RESOURCES - #3 CRUDE UNIT EXPANSION PROJECT	Favorable
19730-2	MINNESOTA POLLUTION CONTROL AGENCY NEGATIVE DECLARATION - FLINT HILLS RESOURCES #3 CRUDE UNIT EXPANSION	Information Only
19734-1	HAM LAKE EMILY'S WATERS - 158 ACRES	Unfavorable
19734-2	HAM LAKE FINAL RESPONSE AND COMMENTS - EMILY'S WATERS	Information Only
19736-1	WACONIA THE FIELDS AT BURANDT LAKE - 156.1 ACRES	Favorable
19736-2	WACONIA NEGATIVE DECLARATION - THE FIELDS	Information Only

MISCELLANEOUS REFERRALS**State and Federal Assessments and Statements****Environmental Assessment Worksheet - State**

Referral	Applicant/Description	Council Action
19738-1	BLAINE BLAINE PONDS - 132 ACRES	Favorable
19745-1	SHAKOPEE THE BLUFF AT MARYSTOWN - 322.98 ACRES	Favorable
19746-1	MINNESOTA POLLUTION CONTROL AGENCY VICTORIA INTERCEPTOR AND LIFT STATION 15	Favorable
19746-2	MINNESOTA POLLUTION CONTROL AGENCY NEGATIVE DECLARATION - VICTORIA INTERCEPTOR AND LIFT STATION 15	Information Only
19754-1	MINNESOTA POLLUTION CONTROL AGENCY BELLE PLAINE NORTH SANITARY SEWER INTERCEPTOR	Unfavorable
19754-2	MINNESOTA POLLUTION CONTROL AGENCY NEGATIVE DECLARATION - BELLE PLAINE NORTH SANITARY SEWER INTERCEPTOR	Information Only
19758-1	HENNEPIN COUNTY RECONSTRUCTION OF CSAH 101	Favorable
19758-2	HENNEPIN COUNTY FINDINGS OF FACT/NEGATIVE DECLARATION - CSAH 101 S. OF CSAH 6	
19761-1	EAGAN TH 149 FROM ALBANO TRAIL TO TH 55 CONSTRUCTION	Favorable
19763-1	MINNESOTA POLLUTION CONTROL AGENCY SOUTHWEST WACONIA AREA SANITARY SEWER INTERCEPTOR	Favorable
19763-2	MINNESOTA POLLUTION CONTROL AGENCY NEGATIVE DECLARATION - SOUTHEAST WACONIA AREA SANITARY SEWER INTERCEPTOR	Information Only
19764-1	DAKOTA COUNTY CSAH 70/I-35 INTERCHANGE RECONSTRUCTION	Favorable
19773-1	HAM LAKE LENNES MINING PROJECT	Favorable
19773-2	HAM LAKE NEGATIVE DECLARATION - LENNES POND	Information Only
19776-1	WASHINGTON COUNTY DISABLED VETERANS REST CAMP REDEVELOPMENT	Favorable
19776-2	WASHINGTON COUNTY NEGATIVE DECLARATION - DISABLED VETERANS REST CAMP EXPANSION	Information Only
19777-1	MINNESOTA POLLUTION CONTROL AGENCY FOREST LAKE SECTION 21 TRUNK SEWER LINE	Favorable
19777-2	MINNESOTA POLLUTION CONTROL AGENCY NEGATIVE DECLARATION & FINDING AND FACTS - FOREST LAKE SECTION 21 TRUNK SEWER LINE	

MISCELLANEOUS REFERRALS**State and Federal Assessments and Statements****Environmental Assessment Worksheet - State**

Referral	Applicant/Description	Council Action
19778-1	MINNESOTA POLLUTION CONTROL AGENCY NEW PRAGUE WASTEWATER TREATMENT FACILITY	Favorable
19778-2	MINNESOTA POLLUTION CONTROL AGENCY NEGATIVE DECLARATION - NEW PRAGUE W.W.T.F.	Information Only
19780-1	WASHINGTON COUNTY CSAH 13 (RADIO DRIVE) RECONSTRUCTION	Favorable
19780-2	WASHINGTON COUNTY NEGATIVE DECLARATION - CSAH 13 (RADIO DR.) RECONSTRUCTION	Information Only
19785-2	FARMINGTON FINDINGS OF FACT & NEGATIVE DECLARATION - FARMINGTON HIGH SCHOOL	Information Only
19787-1	MINNEAPOLIS PACIFIC BLOCK DEVELOPMENT	Unfavorable
19798-1	ANOKA COUNTY CSAH 78 RECONSTRUCTION	Favorable
19798-2	ANOKA COUNTY FINDINGS OF FACT & NEGATIVE DECLARATION - CSAH 78/HANSON BLVD.	Information Only
19802-1	MINNESOTA DEPARTMENT NATURAL RESOURCES VALLEY CREEK STREAM HABITAT RESTORATION PROJECT	Favorable
19802-2	MINNESOTA DEPARTMENT OF NATURAL RESOURCES RECORD OF DECISION - VALLEY CREEK STREAM HABITAT RESTORATION	Information Only
19803-1	MINNEAPOLIS 602 FIRST ST. NORTH RENNOVATION	
19809-1	HENNEPIN COUNTY CSAH/RECONSTRUCTION WEST OF SHETLAND ROAD TO E. TH 212 - EDEN PRAIRIE	Favorable
19812-1	WOODBURY TAMARACK HILLS PLANNED UNIT DEVELOPMENT - 61.3 ACRES	Favorable
19812-2	WOODBURY NOTICE OF NEGATIVE DECLARATION - TAMARACK HILLS PUD	Information Only
19813-1	EDEN PRAIRIE FLYING CLOUD CORPORATION CENTER - 47.6 ACRES	Withdrawn
19815-1	MINNEAPOLIS THE WAVE PROJECT - 304-320 FIRST ST. SOUTH - 1.27 ACRES	Unfavorable
19817-1	JORDAN RESTORATION OF MILL POND PROTECTED WATER - 115 ACRES	Favorable

MISCELLANEOUS REFERRALS**State and Federal Assessments and Statements****Environmental Assessment Worksheet - State**

Referral	Applicant/Description	Council Action
19817-2	JORDAN RESPONSES AND NEGATIVE DECLARATION - RESTORATION OF MILL POND	Information Only
19820-1	SCOTT COUNTY PHEASANT RUN - 185 ACRES	Favorable
19828-1	MINNESOTA POLLUTION CONTROL AGENCY DRAFT SCOPING DECISION DOCUMENT - EXCEL ENERGY ASH LANDFILL	Favorable
19834-1	EAGAN LONE OAK BUSINESS CAMPUS - 85 ACRES	Favorable
19854-1	MINNETONKA DATA PARK EXPANSION - 10.3 ACRES	Favorable
19862-1	ANOKA COUNTY CSAH 14 RECONSTRUCTION	Favorable
19884-1	LINO LAKES NATURE'S REFUGE CONSERVATION DEVELOPMENT - 2 ACRES	Favorable
19888-1	PRIOR LAKE SAND & GRAVEL MINNING - RYAN CONTRACTING CO. - 12.91 ACRES	Favorable
19899-1	CHANHASSEN ISD 112 - PROPOSAL FOR NEW HIGH SCHOOL - 94.8 ACRES	Favorable
19905-1	LAKE MINNETONKA CONSERVATION DISTRICT TRILLIUM BAY HOMEOWNERS AND HALSTEAD BAY DOCK EXPANSION	
19927-1	RAMSEY CITY RAMSEY CROSSINGS - 68.6 ACRES	
19928-1	LILYDALE ONE RIVERFRONT VIEW	

MISCELLANEOUS REFERRALS**State and Federal Assessments and Statements****Environmental Assessment or Statement – Federal**

Referral	Applicant/Description	Council Action
18421-3	APPLE VALLEY UPDATED AUAR AND MITIGATION PLAN - COBBLESTONE LAKE	
18555-3	HOPKINS UPDATED AUAR - EXCELSIOR CROSSING MEDICA BUILDING - 28 ACRES	Favorable
18555-4	HOPKINS REVISED AUAR - EXCELSIOR CROSSINGS OFFICE DEVELOPMENT - 31 ACRES	Favorable
19037-3	FARMINGTON AUAR UPDATE - FARMINGTON SEED/GENSTAR	Favorable
19419-4	METROPOLITAN AIRPORTS COMMISSION FINAL - PERIMETER DIKE AND RUNWAY SAFETY IMPROVEMENTS - ST. PAUL DOWNTOWN AIRPORT	
19529-3	INVER GROVE HEIGHTS FINAL AUAR - NORTHWEST EXPANSION AREA	Favorable
19536-2	COTTAGE GROVE FINAL AUAR - COTTAGE GROVE EAST RAVINE	Favorable
19550-2	CHASKA FINAL AUAR - THE HEIGHTS OF CHASKA - 1,000 ACRES	
19651-2	MINNETRISTA FINAL AUAR - PARK COVER AREA	Unfavorable
19683-1	MINNEAPOLIS ST. ANNE'S PLACE	Favorable
19702-1	MINNEAPOLIS KINGLSEY COMMONS HOUSING - 4550 HUMBOLDT AVE. NORTH	Favorable
19703-1	CARVER CITY CSAH 10 WEST OF CSAH 11 - REALIGNING AND NEW CONSTRUCTION	Favorable
19712-1	MINNEAPOLIS LSS PARK AVE. APTS. - 2424 PARK AVE SOUTH	Favorable
19716-1	MINNEAPOLIS BRIDGE FOR YOUTH - EMERSON AVE. SOUTH	Favorable
19722-1	MINNEAPOLIS CENTRAL AVE. LOFTS - 2338 CENTRAL AVE NE.	Favorable
19740-1	MINNEAPOLIS WASHINGTON COURT APTS. - 2101 WASHINGTON ST. N.E.	Favorable
19751-1	MINNESOTA DEPARTMENT OF TRANSPORTATION PROPOSED CONSTRUCTION OF GRADE SEPARATION - NEW BRIDGES	Favorable
19761-2	EAGAN FINDINGS AND CONCLUSIONS – TH 149 FROM ALBANO TO TH 50	Information Only

MISCELLANEOUS REFERRALS

State and Federal Assessments and Statements

Environmental Assessment or Statement - Federal

<i>Referral</i>	<i>Applicant/Description</i>	<i>Council Action</i>
19775-1	U.S. DEPARTMENT OF THE AIR FORCE RECONSTRUCTION OF JOINT-USE SMALL-ARMS RANGE - MINNEAPOLIS	Favorable
19788-1	MINNEAPOLIS FY 2006 CONSOLIDATED PLAN FOR HOUSING AND COMMUNITY DEVELOPMENT	Favorable
19793-1	MINNEAPOLIS ST. ANNE'S SENIOR HSG. - WEST BROADWAY AND QUEEN AVE NORTH	Favorable
19855-1	CARVER CITY DRAFT - NORTHWEST CORNER - 520 ACRES	Favorable
19856-1	CARVER CITY DRAFT - SOUTHWEST CORNER - 1,716 ACRES	Favorable
19859-1	ROSEMOUNT DRAFT - CSAH42/AKRON AREA - 1,500 ACRES	
19859-2	ROSEMOUNT FINAL AUAR - CSAH 42/AKRON AREA	
19860-1	MINNEAPOLIS PRIVATE RESIDENCE LOT - 3951 6TH STREET NORTH	Favorable
19910-1	MINNEAPOLIS VAN CLEVE COURT PROJECT - 932 12TH AVE. SE.	Favorable
19911-1	MINNEAPOLIS SPIRIT OF THE LAKE - 1238 E. LAKE STREET	
19922-1	SAVAGE DRAFT AUAR - PRIOR LAKE AGGREGATES	
19929-1	ST. LOUIS PARK AUAR - WEST END - CORNER OF I-394 & TH 100 - 48.6 ACRES	

MISCELLANEOUS REFERRALS

State and Federal Assessments and Statements

Environmental Impact Statement - State

<i>Referral</i>	<i>Applicant/Description</i>	<i>Council Action</i>
19008-5	DOUGLAS TWP. FINAL - EDWARD KRAEMER AND SONS INC. QUARRY	Favorable
19194-3	MINNESOTA DEPARTMENT OF TRANSPORTATION AMENDED SCOPING DOCUMENT – TH 41 OVER MINN. RIVER PROJECT - NEGATIVE DECLARATION	Information Only
19598-2	UNIVERSITY OF MINNESOTA FINAL - U OF M ON-CAMPUS FOOTBALL FIELD	Favorable
19598-3	UNIVERSITY OF MINNESOTA FINAL - ON-CAMPUS FOOTBALL STADIUM RECORD DECISION	Information Only
19671-2	MINNESOTA DEPARTMENT OF TRANSPORTATION FINAL - NORTHSTAR CORRIDOR RAIL PROJECT	Information Only
19743-1	RAMSEY COUNTY REGIONAL RAILROAD AUTHORITY DRAFT - CENTRAL CORRIDOR	
19764-2	DAKOTA COUNTY NEGATIVE DECLARATION - CSAH 70/I-35 INTERCHANGE RECONSTRUCTION PROJECT	Information Only
19818-1	U.S. INTERIOR DRAFT - DISPOSITION OF THE FORMER BUREAU OF MINES RESEARCH CENTER	Favorable
19821-1	SCOTT COUNTY DRAFT - CSAH 21 EXTENSION PLUS TRANSIT STATION - SHAKOPEE	Favorable Qualified

STATE GRANT AND LOAN REQUESTS

Department of Transportation

Miscellaneous Programs

<i>Referral</i>	<i>Applicant/Description</i>	<i>Council Action</i>
19677-1	MUNICIPAL BOUNDARY ADJUSTMENT UNIT NEW SCANDIA TWP. INCORPORATION	Favorable
19686-1	ELKO/NEW MARKET COOPERATION & COMBINATION PLAN FOR MERGER AND IMPLEMENTATION	
19710-1	MINNESOTA PIPELINE COMPANY MINNCANN PROJECT APPLICATION FOR CRUDE OIL PIPELINE	Favorable
19766-1	CENTERPOINT ENERGY NATURAL GAS PIPELINE - NE. MINNEAPOLIS FOR EXCEL	Favorable
19842-1	GREATER MINNESOTA TRANSMISSION, LLC GAS PIPELINE ROUTING PERMIT AND PARTIAL EXEMPTION FROM PIPELINE ROUTE	Favorable
19842-2	GREATER MINNESOTA TRANSMISSION, LLC INFORMATION ONLY – VERMILLION, HAMPTON AND RANDOLPH TWP. - DAKOTA CO.	Information Only
19879-1	JACKSON TWP. STORMWATER PERMIT	
19880-1	CREDIT RIVER TWP. STORMWATER PERMIT	
19881-1	CARVER CITY STORMWATER PERMIT	
19882-1	LOUISVILLE TWP. STORMWATER PERMIT	
19883-1	SPRING LAKE TWP. STORMWATER PERMIT	