



Minnesota Pollution Control Agency

# Report on 2005 SCORE Programs

A summary of waste management in Minnesota

December 2006



Piles of glass await reprocessing at Anchor Glass in Shakopee, Minnesota.

Minnesota Pollution Control Agency  
520 Lafayette Road North  
Saint Paul, MN 55155-4194  
651-296-6300 or 800-657-3864 toll free  
<http://www.pca.state.mn.us>

## Authors and Contributors

Principal Author/Data Analysis: Arlene Vee and Mark Rust

Ann Bernstein

David Fawcett

Henry Fisher

Wendy Gardner-Pritchard

Wayne Gjerde

Kevin McDonald

Tina Patton

Sig Scheuerle

## Editing and Graphics

Paul Andre

Theresa Gaffey

Glenn Krocheski-Meyer

Gail Skowronek

*The total cost of preparing the Report on 2005 SCORE Programs was \$10,500 including staff time, writing, editing, and printing.*

*The MPCA is reducing printing and mailing costs by using the Internet to distribute reports and information to a wider audience. For additional information on recycling, waste prevention, and waste management, check out the SCORE Web site: <http://www.moea.state.mn.us/score/>*

*This report was printed on recycled paper manufactured without the use of elemental chlorine (cover: 30% post-consumer; body: 100% post-consumer).*

# Table of Contents

|   |           |
|---|-----------|
| <b>Introduction</b> .....   | <b>1</b>  |
| <i>The SCORE Program</i> .....  | 1         |
| <i>Analyzing the Data</i> .....   | 1         |
| <i>2005 Solid Waste Policy Report Recommendations</i> .....                     | 1         |
| <i>25 Years of the Waste Management Act</i> .....                               | 2         |
| <b>MSW Generation in Minnesota</b> .....  | <b>3</b>  |
| <i>Totals and Trends</i> .....  | 3         |
| <i>Per Capita MSW Generation</i> .....  | 4         |
| <i>How Minnesota Compares</i> .....   | 4         |
| <b>Recycling and Waste Reduction</b> .....                                      | <b>6</b>  |
| <i>Recycling Collection Study</i> .....   | 6         |
| <i>Recycling Markets Update</i> .....   | 7         |
| <i>The Environmental and Economic Benefits of Recycling</i> .....               | 8         |
| <i>Waste and Toxicity Reduction</i> .....                                       | 9         |
| <i>Office Paper Reduction Campaign</i> .....                                    | 10        |
| <i>Resource Management Contracts</i> .....                                      | 10        |
| <i>Get the Lead Out! Environmentally Friendly Fishing Tackle Campaign</i> ..... | 10        |
| <b>MSW Processing and Disposal</b> .....  | <b>11</b> |
| <i>Trends in Waste Disposal</i> .....   | 11        |
| <b>Funding of SCORE Programs</b> .....  | <b>12</b> |
| <i>State Funding: SCORE Block Grants</i> .....                                  | 13        |
| <i>County Funding</i> .....   | 13        |

## Figures

|  |    |
|--|----|
| <i>Figure 1: Minnesota MSW Generation</i> .....                      | 4  |
| <i>Figure 2: BioCycle Survey</i> .....                               | 5  |
| <i>Figure 3: Minnesota's Recycling Progress</i> .....                | 6  |
| <i>Figure 4: MSW Disposal and Processing in Minnesota 2005</i> ..... | 11 |
| <i>Figure 5: Trends in Minnesota Waste Management</i> .....          | 12 |
| <i>Figure 6: SCORE Expenditures</i> .....                            | 14 |

lrp-p2s-3sy07

# Introduction

---

The *Report on 2005 SCORE Programs* summarizes information submitted by all 87 counties and the Western Lake Superior Sanitary District (WLSSD) on waste management efforts, including waste reduction activities, recycling, household hazardous waste programs, and problem materials collection. On July 1, 2005, the Minnesota Office of Environmental Assistance (OEA) merged with the Minnesota Pollution Control Agency (MPCA), along with all of its programs. This report and all related information on the SCORE Program are available on the MPCA's Web site at <http://www.moea.state.mn.us/lc/score.cfm>.

## The SCORE Program

Minnesota's statewide recycling efforts began in earnest in 1989, when the Legislature adopted comprehensive legislation based on the recommendations of the *Governor's Select Committee on Recycling and the Environment*. This set of laws, commonly referred to as SCORE, initiated a stable source of state funding for recycling programs, as well as waste reduction and the improved management of household hazardous wastes and problem materials. The legislation, SCORE grant dollars, and revenue from counties and local government provide the basis for long-term, flexible programs.

This investment in environmental innovation directly contributes to Minnesota's economic health. Altogether, the recycling industry pays an estimated \$760 million in wages and adds \$2.98 billion to the state's economy. Minnesota's value-added recycling manufacturing industry has created more than 9,000 jobs and provided nearly \$64 million in annual tax revenues. These jobs, in turn, support another 10,200-plus people in indirect and induced jobs. The recycling industry continues to show gains in employment, adding over 300 jobs. For more information on how recycling helps the state's economy, visit MPCA's Web site at <http://www.moea.state.mn.us/market/valueadded.cfm>.

## Analyzing the data

The MPCA uses the information submitted by all 87 counties and the Western Lake Superior Sanitary District to calculate the state's recycling rates, the cost of managing waste and recycling, and to detail trends in waste generation and disposal. While data collection began in 1989, the MPCA typically uses calendar year 1991 as a baseline for trend analysis. In 1991, counties began collecting data on a calendar year basis, instead of a fiscal year basis, and by that point, data collection and format had greatly improved, making the quality of the data that much better.

## 2005 Solid Waste Policy Report recommendations

Every other year, the MPCA expands on the annual Report on SCORE Programs and makes solid waste policy recommendations to the Legislature in the form of a solid waste policy report. The *2005 Solid Waste Policy Report* (<http://www.moea.state.mn.us/policy/policyreport.cfm>) highlights three primary policy recommendations:

- Preserve and increase waste-to-energy capacity to conserve landfill capacity.
- Recover more recyclables and organics.
- Stop residential burning and on-site burial of waste.

These three recommendations, the result of internal discussion and stakeholder input, are directly linked to the MPCA's 2006 strategic plan (<http://www.pca.state.mn.us/publications/reports/strategicplan.html>), which calls for ambitious waste-abatement achievements by January 2011. The MPCA strategic plan calls Minnesota to:

- **Send 35 percent of its total waste to source-separated compost processing and waste-to-energy facilities.** In 2005, such processing is less than 23 percent. Since some of Minnesota's existing capacity may be in jeopardy, hitting the 35 percent goal will take considerable effort and perhaps a new way of looking at the problem.
- **Achieve a 50 percent recycling rate by 2011.** Currently, statewide, Minnesota has a 48.5 percent recycling rate (includes credits for yard waste recycling and waste reduction efforts) and has seen an average increase of 1.56 percent in the last three years (2003-2006). Much more can be done to recover discarded materials still disposed of each year.
- **Growth in municipal solid waste (MSW) generation does not exceed the population growth rate.** The SCORE data indicates that MSW generation reflects the economy. In 2005, MSW generation increased 1.8 percent compared to the population growth of 1.2 percent. It is increasingly important that Minnesota citizens and its industry/businesses take responsibility to protect our environment by conserving its resources.
- **Reduce emissions of dioxins and furans from open burning by 50 percent from 2002 levels.** A survey showed that 45 percent of the respondents burn their garbage on-site in a burn barrel, fire pits, or similar devices. Furthermore, the *2005 Solid Waste Policy Report* recommends the MPCA actively work with local governments to reduce backyard garbage burning at the local and regional level over the next four years; report to the Legislature on progress made to-date during the 2007 session and recommend that the Legislature eliminate burn barrels by 2010.

The *2005 Solid Waste Policy Report* also discusses other subsequent policy recommendations. Research needs are highlighted and organized in the report according to the Waste Management Act solid waste hierarchy. See <http://www.moea.state.mn.us/policy/policy2005.cfm> for more details.

## 25 years of the Waste Management Act

The goal of the Waste Management Act (WMA) (Minn. Stat. § 115A.02a) is to foster an integrated waste management system in a manner appropriate to the characteristics of the waste stream, and thereby protect the environment and public health. The WMA ranks waste management practices in the following order of preference:

1. Waste reduction and reuse.
2. Waste recycling.
3. Composting of yard waste and food waste.
4. Resource recovery through mixed MSW composting or incineration.
5. Land disposal which produces no measurable methane gas or which involves the retrieval of methane gas as a fuel for the production of energy to be used on-site or for sale.
6. Land disposal that produces measurable methane but does not involve the retrieval of methane gas as a fuel for the production of energy to be used on-site or for sale.

In 2005, 25 years after implementation of the WMA, waste management in Minnesota is at a crossroads. Although much progress has been made in recovering resources from waste and avoiding landfilling; Minnesota faces significant challenges in the upcoming years.

- Despite recent strong market prices for commodities, recycling rates have leveled off at nearly 41 percent (actual percentage of materials recycled, does not include credits), meaning that even as the total tons recycled per year continues to grow; the gains are being outpaced by overall growth in waste generation.

- Given inflation and budget cuts, state financial support for waste management activities has been eroding steadily. In response, some counties, particularly in rural areas, have been cutting back their efforts on recycling, waste reduction, public education, and problem materials management.
- Two of the largest waste-to-energy facilities may close in 2007 and 2009 when county contracts expire. Landfill capacity in the Metropolitan Area is limited to three privately-owned landfills; and neighboring states (Wisconsin, Iowa, and North Dakota) are increasing fees on landfilled waste, including all waste imported into their states. There is a distinct possibility that our reliance on other states over the last ten years for cheap landfilling may not last, placing a heavy burden on Minnesota's landfill capacity, particularly if a portion of today's waste-to-energy processing capacity is lost and more capacity is not added.
- While Minnesota has been successful in closing open-burning dumps, raising environmental protection at disposal facilities, and diverting huge amounts of material from landfills, it has not succeeded in reducing the amount of material being thrown out.

## MSW Generation in Minnesota

---

Though Minnesota has shown a steady growth in MSW since 1989, reflected in both the total amount of MSW generated and in the per capita figures; those rates of increase slowed in 2003 and 2004, during a period of economic downturn. In 2005, however, total MSW generation increased by nearly 2 percent and per capita MSW generation increased by 0.6 percent, reflecting the current growth in Minnesota's economy.

Mixed MSW is defined by statute as "garbage, refuse, and other solid waste from residential, commercial, industrial, and community activities that the generator of the waste aggregates for collection." It includes common materials found in household and commercial garbage, such as packaging materials, containers, food discards, and other compostable materials, plastic, paper, etc. MSW does *not* include auto hulks, street sweepings, ash, construction debris, mining waste, sludge, tree and agricultural wastes, tires, lead acid batteries, motor and vehicle fluids and filters, and other materials collected, processed, and disposed of as separate waste streams (Minn. Stat. § 115A.03, subd. 20).

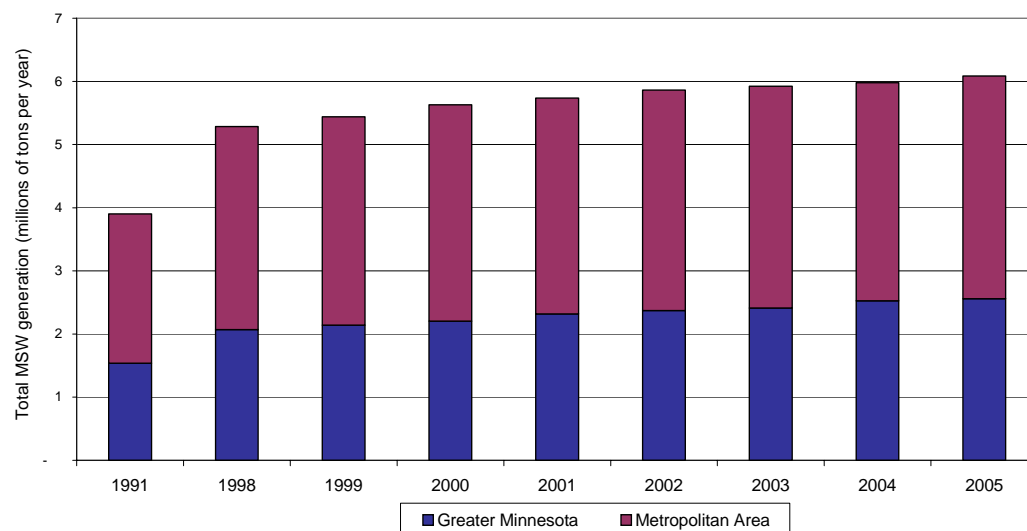
Total generation of the state's MSW includes wastes recycled, discarded (including tons sent to disposal and resource recovery facilities), and tons disposed of on-site (burn barrels or farm dumps).

### Totals and trends

Minnesota MSW generation totaled 6,085,744 tons in 2005, for the first time exceeding six million tons. Greater Minnesota accounted for 42 percent of the state's MSW generation and the seven-county Metropolitan Area accounted for 58 percent.

Statewide, this represents a 1.8 percent increase over the previous year. Since 1991, MSW generation has grown on average by 3.2 percent per year. After the period of biggest growth (1989-1997), the average increase in MSW generation over the last seven years dropped to 2 percent (1998-2005) and just over 1 percent over each of the past three years (2003-2005). While improvement in waste reduction techniques and efforts may account for some decline, waste generation has shown to decrease during times of economic recession and increase during an economic upsurge.

**Figure 1: Minnesota MSW Generation**



Total generation:  
6,085,744 tons

For 2004 – 2005, the amount of MSW generated in Minnesota increased by 1.8%, while population increased by 1.2%.

That's 2,338 pounds of waste and recyclable materials for every person in the state.

|                   | 1991 | 1998 | 1999 | 2000 | 2001 | 2002 | 2003 | 2004 | 2005 | Changes 2004-05 |
|-------------------|------|------|------|------|------|------|------|------|------|-----------------|
| Greater Minnesota | 1.54 | 2.07 | 2.14 | 2.21 | 2.32 | 2.37 | 2.41 | 2.53 | 2.56 | 1.3%            |
| Metropolitan Area | 2.37 | 3.22 | 3.30 | 3.42 | 3.42 | 3.49 | 3.51 | 3.45 | 3.52 | 2.1%            |
| Minnesota         | 3.90 | 5.29 | 5.44 | 5.63 | 5.74 | 5.86 | 5.92 | 5.98 | 6.09 | 1.8%            |

Figures in millions of tons. For full data for 1991-2005, refer to Appendices.

## Per capita MSW generation

By dividing the state's total generation of waste by the state's population, MPCA calculates the amount of waste that the "average" Minnesotan creates each year in an attempt to understand if waste growth is coming primarily from an increase in population or increases in consumption.

In 2005, the per capita rate increased for the first time in three years: 1.169 tons per person, an increase of 0.6 percent from 2004 — growth consistent with the recent growth in Minnesota's economy.

## How Minnesota compares

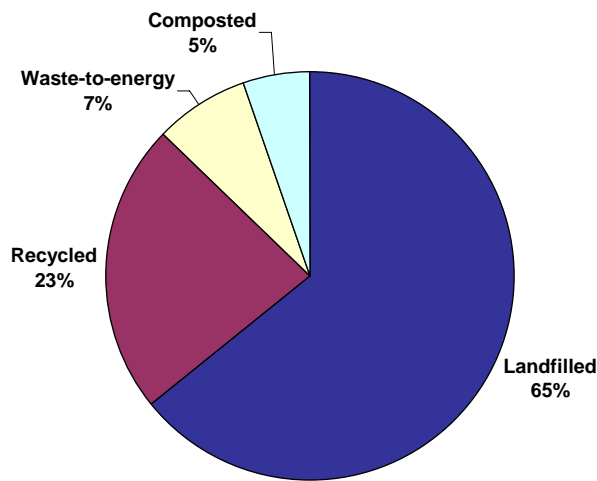
*BioCycle* magazine collects and analyzes national recycling and solid waste data. Its most recent report, "State of Garbage in America," was conducted over the fall of 2005 and winter of 2006 and published in their April 2006 issue. The complete survey and all of its data, methodology used, and the primary goal of the survey can be found in the April 2006 *BioCycle* magazine or by going to <http://www.jgpress.com/biocyte.htm>.

The national picture of the State of Garbage in America is:

- Total MSW generated (388 million tons)
- 64.1 percent is landfilled (249 million tons)
- 23.2 percent is recycled (90 million tons)
- 7.4 percent is combusted in waste-to-energy plants (29 million tons)
- 5.3 percent is composted (20 million tons)
- *BioCycle's* survey (2004 data) shows overall MSW generation (the sum of MSW recycled, composted, combusted and landfilled) continues to increase. In 2004, total MSW generation shows an increase of more than five percent over 2002 reported tonnages. However, on a per-capita basis, 2004 and 2002 have similar rates — 1.32 tons/person/year for 2004 versus 1.31 tons/person/year in 2002. Comparatively, Minnesotans generate slightly less MSW on a per capita basis — 1.2 tons/person/year.

Nationwide, the amount of MSW being recycled (includes organic materials composted and/or mulched) has increased from 99 million tons (26.7 percent) in 2002 to 110 million tons (28.5 percent) in 2004. Using 2004 data, *BioCycle* ranks Minnesota second in the nation with a 43.2 percent recycling rate, preceded only by Oregon at 45.8 percent, and followed by New York at 43 percent.

**Figure 2: *BioCycle* Survey**



| MSW Exports for 2004 |                  | MSW Imports for 2004 |                   |
|----------------------|------------------|----------------------|-------------------|
| State                | Tons exported    | State                | Tons received     |
| Maryland             | 2.6 million tons | Pennsylvania         | 10.6 million tons |
| New Jersey           | 2.5 million tons | Michigan             | 6 million tons    |
| New York             | 2.2 million tons | Virginia             | 5.9 million tons  |
| Minnesota            | 850,000 tons     | Minnesota            | no imports        |

*Significant amounts of solid waste continue to cross state borders throughout the nation—And almost all solid waste imported by neighboring states is landfilled. Pennsylvania, Michigan, and Virginia lead the nation in MSW imports.*



# Recycling and Waste Reduction

Minnesota's recycling programs are among the nation's most successful, reflecting the strong local and state investment and public participation. In 2005, Minnesota's recycling rate (including credits for yard waste recycling and waste reduction efforts) increased by 0.5 percentage points to 48.5 percent, ranking second in the nation according to *BioCycle* magazine's annual survey. The state's base recycling rate (which is the actual percentage of materials recycled and does not include the additional source reduction and yard waste credits) is approximately 41 percent. While this growth reflects the significant state, local, and industry investment in our recycling system, as well as strong material markets, evidence suggests much more could be done to recover the millions of discarded recyclable and organic tons of material still disposed of each year.

In 2005, recycling programs in Minnesota collected nearly 2.5 million tons of recyclable materials (paper, metals, glass, plastic, food, problem materials, etc.) — an increase of nearly 70,000 tons, or 3 percent, from the previous year. Since the SCORE legislation was enacted in 1989, the tons of materials collected for recycling in Minnesota have more than tripled and the statewide recycling rate has increased by more than 25 percentage points, moving from approximately 23 percent to 48.5 percent.

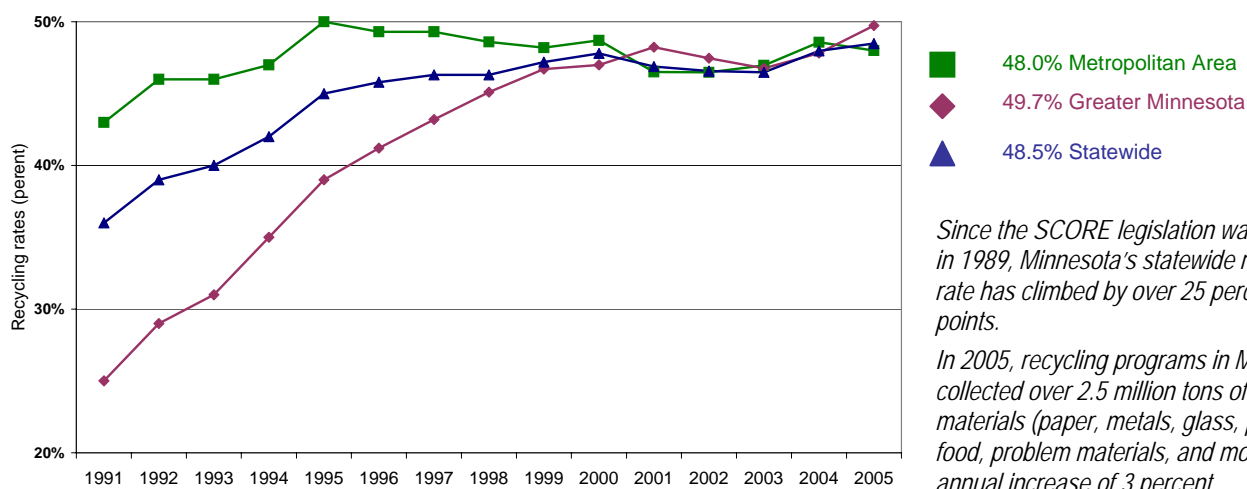
## BioCycle's 2004 recycling rates

|              |        |
|--------------|--------|
| Minnesota    | *43.2% |
| Iowa         | 39.6%  |
| Wisconsin    | 32.4%  |
| North Dakota | 18.0%  |
| South Dakota | 3.0%   |

source: "The State of Garbage in America," *BioCycle*, April 2006

\**BioCycle's* rate for Minnesota does not include source reduction and yard waste credits and is derived from their own unique calculation.

**Figure 3: Minnesota's Recycling Progress**



## Recycling collection study

In Minnesota, much debate has centered around single-stream and dual-stream recycling systems: What are their comparative advantages and disadvantages? In 2005, the MPCA commissioned a study comparing the two collection methods and their respective impacts on recycling markets in order to get a better understanding of changing collection styles.

The study, *Single-Stream and Dual-Stream Recycling: Comparative Impacts of Commingled Recyclables Processing*, conducted by Tim Goodman & Associates, gathered information about the collection and processing methods of four major materials recovery facilities (MRF) in Minnesota, the quality of materials received at seven major recycling markets and its impacts, and the characteristics and benefits of select recycling equipment. Only one MRF agreed to fully participate in the study, but, when available, existing information about the others was reviewed and included.

**Key findings from the study:**

- Glass breakage occurs during both collection methods, but appears to be more prevalent in single-stream processing systems.
- Processing residuals at single-stream facilities in the metro area varies significantly, from around 2 percent up to 17 percent of throughput.
- Glass breakage can be reduced through the use of collection vehicles and methods designed to minimize it.

The study also found that over 70 percent of end markets interviewed reported seeing more contamination today than five years ago. In addition, the major glass market in Minnesota, a glass container manufacturer, has experienced a dramatic decrease in the quantity of clean, color-separated glass cullet, and attributes this decrease to increased single-stream recycling. Most paper and plastics manufacturers interviewed felt that single-stream recycling is a contributing factor, among others, to the decline in feedstock quality. However, markets also noted that feedstock contaminants and problem loads of glass also come from dual stream MRFs as well, though to a lesser extent.

The MPCA will use this study to assist local units of government to improve their recycling collection, processing, and marketing. This, in turn, may improve recycling rates by ensuring the most efficient balance among public participation, processing residuals, and quality of marketable materials in local recycling programs.

**Select key recommendations for MPCA staff included:**

- Develop educational materials and sponsor workshops for local decision-makers that outline the advantages and disadvantages of different collection and processing methods and discuss options for minimizing problems with any system.
- Implement a registration or certification process for MRFs in Minnesota that would give a better understanding of Minnesota's recycling rates and infrastructure by requiring registered MRFs to report certain information.
- Clarify to all stakeholders the terms of the Solid Waste Management Tax exemption (Minn. Stat. § 297H.06) to ensure adequate compliance.
- Conduct further research into the feasibility of using optical sorting technology for processing mixed broken glass from local MRFs, and of possible public/private partnerships for the construction and operation of an optical sorting facility.

## Recycling markets update

Markets in 2005 were good, with strong demand from both the local and global markets. In fact, Minnesota continues to grow a healthy recycling industry within the state. Most commodities exhibited either continued strong pricing or price increases.

**Glass:** Anchor Glass remained a viable market for many programs in the state despite some corporate financial problems. Prices for glass in Minnesota remain well above the national average. In fact, glass prices in Minnesota have traditionally been more stable than other commodities. Continued trends away from source separation have increased glass breakage during collection and processing and result in less material being marketed for glass-to-glass recycling. The MPCA is conducting a feasibility study of optical sorting technology in 2006, which may provide a means to return the broken mixed glass to a glass-to-glass market.

**Plastic:** The continued success of the plastic lumber industry in Minnesota, specifically, Bedford Technologies and Master Mark Plastics, has created great local demand for high density polyethylene (HDPE). Consequently, prices paid for HDPE in the state are above the national average. Rising energy prices and global competition for the material pushed the price for all plastics up higher, especially by the end of 2005. In addition, there is strong demand nationally (driven by two national plastic lumber producers: AERT Choice Decking and TREX) for plastic film for use in plastic lumber.

**Metals:** The national recycling rate for aluminum has fallen in recent years from 65 percent to 50 percent while demand has stayed strong. The energy savings from recycling cans has prompted the industry to initiate a campaign to encourage additional recycling. Strong national and international demand, and some of the highest commodities prices on record, has driven up the prices for all metals, especially copper.

**Paper:** All grades of paper, including old corrugated cardboard (OCC) and newspaper, have been strong despite the closing of some U.S. mills. The international demand has been driven by China, which has opened state-of-the-art mills in the last several years. Our local markets remain strong and in need of local material.

## Market outlook

Glass markets may continue to be a challenge in the next few years as Anchor modifies its recycling operation and new players come to Minnesota. However, Anchor Glass needs and can accept as much clear glass as Minnesota can generate. Plastics prices are not expected to increase, as natural gas prices are stabilizing. The 2006 demand for HDPE in Minnesota is projected to be about 50 to 60 million pounds. Paper and metals remain strong, and mills continue to need more and more material.

In fact, now, more than ever, there is a need to support local markets, Minnesota and regionally. While the global market is an important player in Minnesota's recycling industry, especially as demand has increased, the long-term success of local recycling programs relies on a healthy competitive balance between local and global markets. As industry and consumerism develops in China, India, and other Asian markets, these countries will generate more of their own material, which would result in reduced demand for U.S. material. At that time, local markets will need to be strong enough to absorb the increased supply of recycled material in the state. In addition, local markets produce local economic impact to a greater extent than exporting our raw materials. These dollars — and the jobs and revenue they generate — are kept local and strengthen our state economy.

## The environmental and economic benefits of recycling

Recycling is important in Minnesota — both economically and environmentally. Minnesota's recycling manufacturers contribute an estimated \$2.98 billion to the state's economy, supporting nearly 20,000 jobs in total. In addition to the contributions of these value-added manufacturers, there is economic value related to collecting, processing, and marketing recyclables in Minnesota (which is supported by SCORE dollars).



In addition to recycling's economical benefits, environmental benefits can be quantified using the National Recycling Coalition's (NRC) Environmental Benefits Calculator, based on tons of materials recycled, landfilled, and incinerated in Minnesota using the 2005 data submitted by its 87 counties and WLSSD.

By recycling 2.5 million tons, Minnesota reduced its greenhouse gas emissions by 1.6 million metric tons carbon equivalent (MTCE) compared to disposal. This is equivalent to taking nearly 1.25 million passenger

cars off the road. Minnesota’s recycling rate avoided energy use of over 27 million British Thermal Units (BTUs), which is equivalent to the energy use of almost 385,000 households. By recycling 388,562 tons of ferrous steel in

Minnesota, a total of 781,010 tons of resources were saved — of that, 485,703 tons of iron ore, 271,992 tons of coal, and 23,314 tons of limestone was saved (<http://www.recycle-steel.org>). Also, more than 5.9 million trees were saved by recycling over 458,315 tons of newsprint, mixed, and office paper in 2005 (<http://www.conservatree.org>).

For more information on recycling benefits, checkout the *Minnesota’s Recycling Industries: Economic Activity Summary* at <http://www.moea.state.mn.us/market/economic.cfm> and National Recycling Coalition at <http://www.nrc-recycle.org>.

### **Mattress recycling in northeast Minnesota saves landfill space and creates jobs**

The Northeast Minnesota Mattress Recycling Pilot Project began as a grant to test the feasibility of mattress recycling by bringing together partners from Goodwill Industries, universities, retailers, the hospitality industry, and the seven counties in northeast Minnesota. In 2005, the project collected 6,373 mattresses and box springs and has become a model for organizations across the nation.



*The new Carlton County Mattress Recycling operation at their transfer station on Highway 210.*

*The container holds approximately 75 mattresses when full.*

#### **Environmental and economic results**

- Saved 753 cubic yards of landfill space valued at \$23,478.
- Created one additional employment opportunity for Goodwill Industries.
- Outside of \$38,238 collected in tipping fees, Goodwill Industries has realized an additional \$5,800 in revenue from sales of the recyclable materials. The table below shows the breakdown of materials recovered.

#### **Materials recovered in 2005**

| <b>Material</b>                    | <b>Amount</b> | <b>Disposition</b>  |
|------------------------------------|---------------|---|
| Polyfoam                           | 12.5 tons     | 8.357 tons of this was sold at \$210 per ton for \$1,755. The polyfoam is ground up and used as carpet backing and furniture padding. |
| Polyfoam toppers (mattress covers) | 8.62 tons     | Sold at \$90 per ton for \$776.   |
| Steel                              | 71.37 tons    | Sold for \$3,272.   |
| Wood frames from box springs       | 31 tons       | Chipped and sent to WLSSD composting operation.   |
| Cotton                             | 19.18 tons    | There is no market for this material at this time, but efforts are underway to secure one.  |

### **Waste and toxicity reduction**

Preventing waste at its source is at the top of the waste management hierarchy because it is the most beneficial waste management strategy, both economically and environmentally. Waste that is prevented at its source does not need to be managed or recycled, which means fewer costs and less pollution from transporting, recycling, processing, or landfilling wastes, in addition to the significant benefits associated with manufacturing and distributing goods, and materials made with recycled content.

While various factors including pollution and waste prevention techniques, as well as economic conditions, affect the rate of overall MSW growth, state, county, and city governments must continue to address the significant cost of removing toxic materials from the waste stream. The state continues to work with local

household hazardous waste (HHW) facilities, manufacturers, and the general public to reduce problem material generation through education, reuse, recycling, Design for the Environment (DfE), and product stewardship partnerships.

## Office paper reduction campaign

In 2005, the MPCA launched a statewide Office Paper Reduction Campaign, which consisted of matching grants to organizations to demonstrate practical ways to reduce the generation of office paper. As a result, a number of materials are available for use by businesses and local government: a high-quality education video, an e-mail communications program for use in office settings, as well as print and Web-based resources. For more information, visit <http://www.reduce.org/paper/index.html>.

## Resource management contracts

Resource management contracting is an innovative alternative to today's typical waste management contracts. Unlike traditional solid waste service contracts, resource management (RM) compensates waste contractors based on performance in achieving an organization's waste reduction goals rather than the volume of waste disposed of. As a result, RM aligns waste contractor incentives with an organization's own goals as both explore innovative approaches that foster cost-effective resource efficiency through prevention, recycling, and recovery.

In 2005, the MPCA supported several pilot projects on RM contracting. These projects are intended to gather real world experiences of a variety of organizations (e.g., state prison, school district, and college). A Web page was also developed to provide basic information about RM contracting, including sample Request for Proposals, bid forms, and U.S. Environmental Protection Agency (EPA) resources.



The MPCA intends to further develop RM contracting as a tool for larger public and private organizations to accelerate reduction activities and increase recycling rates. In developing future strategies related to resource management contracting, the MPCA sees an important role to be played by local units of governments. More information can be found at <http://www.moea.state.mn.us/lc/rmcontracting.cfm>.

## “Get the Lead Out!” Environmentally friendly fishing tackle campaign

In 1999, OEA launched a new campaign to promote the manufacture, sale, and use of environmentally friendly non-lead fishing tackle. The campaign employs a spectrum of awareness-building approaches and non-regulatory assistance to create substantive change in both the use and manufacture of alternative fishing tackle.

Lead is a high priority toxic and bio-accumulative metal and presents numerous public health and environmental challenges. The campaign has created a high level of public awareness and generated a groundswell of interest, and it may serve as a “gateway” topic for local units of government to engage residents on recycling and waste reduction issues.

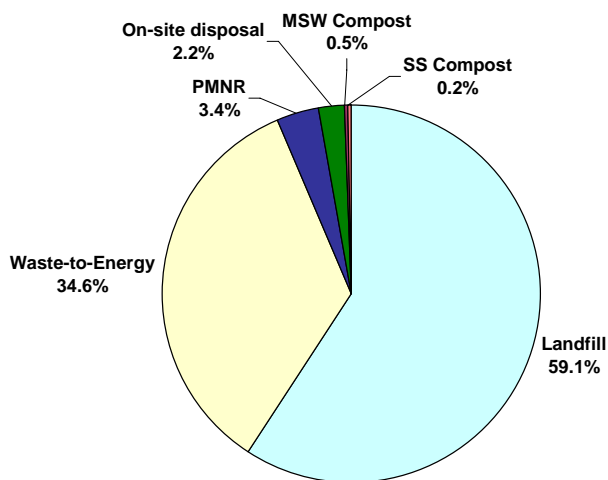
Local units of government have a growing interest in this campaign and are increasingly investing time and resources into localized efforts. In 2005, as a result of this program, 1,000 pounds of lead has been collected, ultimately reducing the amount entering our lakes. The MPCA welcomes the opportunity to work with partners to develop and implement “Get the Lead Out!” efforts. These include potential programming opportunities at HHW collection sites and events — venues that provide educational opportunities, increase collaboration among partners, and promote the retail availability of lead-free tackle. For more information, visit <http://www.moea.state.mn.us/sinkers>.

# MSW Processing and Disposal

In 2005, waste that was not recycled or prevented/reduced and, therefore, must be disposed of, totaled nearly 3.4 million tons — a slight increase of just over one percent from 2004. This number includes waste landfilled, processed, as well as estimates for on-site disposal and problem materials not recycled.

In Minnesota, waste is managed through four main methods: landfills, waste processing/resource recovery facilities, source-separated composting, and on-site disposal.

**Figure 4: MSW Disposal and Processing in Minnesota, 2005**



## Trends in waste disposal

Waste management in Minnesota is guided by a hierarchy that prioritizes waste reduction, recycling/composting, and resource recovery. During 2005, source-separated composting had the largest decrease, from nearly 11,000 to 7,000 tons. MSW composting increased by nearly 25 percent from 14,000 to over 17,000 tons during that same period. Changes in reporting and hauling appear to account for the bulk of this increase.

|                                       |       | Change 2004-05 |
|---------------------------------------|-------|----------------|
| Landfill                              | 59.1% | 0.2%           |
| Waste-to-energy                       | 34.6% | 2.7%           |
| Problem Materials not Recycled (est.) | 3.4%  | 2.4%           |
| On-site Disposal (est.)               | 2.2%  | (2.0%)         |
| MSW Compost                           | 0.5%  | 24.5%          |
| Source-separated Compost              | 0.2%  | (38.5%)        |

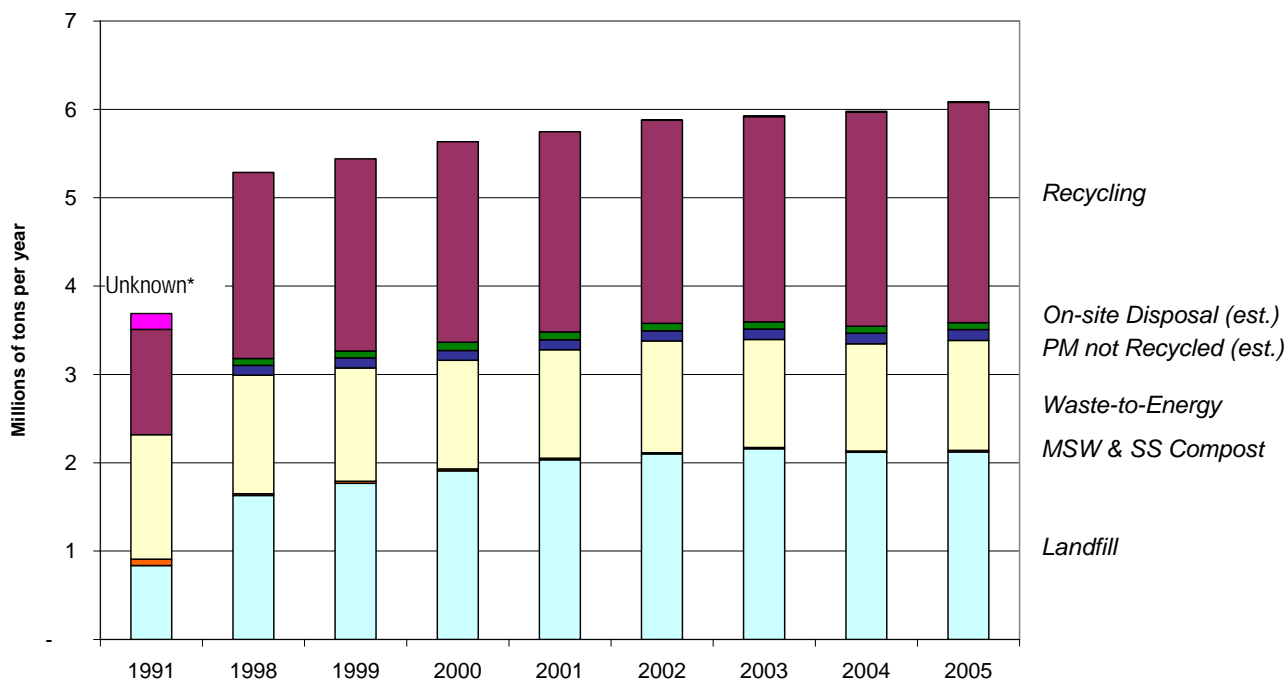
Percentages of total waste disposal; excluding recycling. Decreases indicated by parentheses (x%).

In 2005, the amount of waste sent to landfills, the least-preferred disposal option, remained virtually unchanged, increasing by 4,000 tons or 0.2 percent. On-site disposal (estimates from county staff on the level of on-site dumping and burning that occur) decreased by 2 percent or by 1,600 tons, and waste-to-energy increased by 2.7 percent or by 32,260 tons in 2005. Since reaching its highest level in 1993 at just over 1.5 million tons, waste-to-energy has declined to 1.2 tons or by 21 percent over the past 13 years.

In 2005, we saw a decrease of 37,825 tons (4 percent) in the amount of MSW leaving Minnesota going from 850,204 in 2004 to 812,380 tons in 2005. This is the first time since 2002 that there was a decrease in the amount of MSW leaving the state. Although 2005 saw a slight decline, historically, tons of waste going out of state continues to increase. While there are a variety of issues that impact waste flow, such as facility types and locations, hauling companies in operation, existing contracts, prices, etc., additional information is needed to make a determination of this year's decrease.

| MSW leaving Minnesota |              |
|-----------------------|--------------|
| 2001                  | 671,954 tons |
| 2002                  | 614,002 tons |
| 2003                  | 702,131 tons |
| 2004                  | 850,204 tons |
| 2005                  | 812,380 tons |

**Figure 5: Trends in Minnesota Waste Management in Tons**



|                          | 1991        | 1998        | 1999        | 2000        | 2001        | 2002        | 2003        | 2004        | 2005        | Change<br>2004-05 |
|--------------------------|-------------|-------------|-------------|-------------|-------------|-------------|-------------|-------------|-------------|-------------------|
| Source-separated Compost |             |             |             |             |             | 0.004       | 0.005       | 0.01        | 0.01        | (38.5%)           |
| Recycling                | 1.2         | 2.11        | 2.18        | 2.27        | 2.27        | 2.29        | 2.32        | 2.42        | 2.49        | 2.9%              |
| On-site Disposal (est.)  |             | 0.08        | 0.08        | 0.10        | 0.09        | 0.08        | 0.08        | 0.08        | 0.08        | (2.0%)            |
| PM not recycled (est.)   |             | 0.11        | 0.11        | 0.11        | 0.11        | 0.12        | 0.12        | 0.12        | 0.12        | 2.4%              |
| Waste-to-Energy          | 1.41        | 1.34        | 1.28        | 1.23        | 1.22        | 1.26        | 1.23        | 1.21        | 1.24        | 2.7%              |
| MSW Compost              | 0.07        | 0.02        | 0.02        | 0.01        | 0.01        | 0.01        | 0.01        | 0.01        | 0.02        | 24.5%             |
| Landfill                 | .84         | 1.63        | 1.77        | 1.91        | 2.03        | 2.11        | 2.16        | 2.12        | 2.12        | 0.2%              |
| <b>Total</b>             | <b>3.69</b> | <b>5.29</b> | <b>5.44</b> | <b>5.63</b> | <b>5.74</b> | <b>5.88</b> | <b>5.92</b> | <b>5.98</b> | <b>6.09</b> | <b>1.8%</b>       |

Figures in millions of tons. PM = Problem Materials. Decreases indicated by parentheses (x%).

\* Unknown destination waste totals were only reported during the early years of SCORE (1989-1994).

## Funding of SCORE Programs

Minnesota boasts one of the best recycling rates in the nation due to the level of participation by our citizens and businesses, along with comprehensive recycling programs at the township, city, and county levels — programs funded by local government and state revenues. In 2005, Minnesota counties spent over \$54 million for SCORE-related programs, an increase of more than \$3.3 million, or 6.4 percent, from 2004.

Continued funding commitments from the Legislature and significant investments at the local level provide the funding for these programs.

## State funding: SCORE block grants

From the inception of SCORE, state tax revenue has provided a long-standing funding source for recycling and waste reduction programs. Money from the state is passed on to the county level in the form of annual block grants. SCORE disbursement dollars were \$14.5 million until 2002 when the Legislature permanently reduced SCORE block grant dollars by ten percent, down to \$12.6 million. In 2003, the governor enacted a one-time general revenue unallotment, and the SCORE dollars were reduced to \$11.2 million. However, \$12.5 million in SCORE block grants to eligible counties were disbursed in calendar year (CY) 2004 and CY 2005.

Within certain guidelines, counties have broad discretion in determining how to spend SCORE block grants and local matching funds, which gives them flexibility to develop programs that best meet local needs. The MPCA monitors the county use of SCORE grants to ensure they are used to fund SCORE-eligible programs: source reduction, recycling, market development, management of problem materials, waste education, litter prevention, technical assistance to ensure proper solid waste management, and waste processing (Minn. Stat. § 115A.55).

Despite the economic value of the recycling industry to the state's economy, Minnesota's recycling infrastructure faces challenges. Some counties are dealing with budget reductions by closing down recycling centers or limiting the types of materials they collect. Plastic and glass recycling have been eliminated in some communities. Rural recycling programs, in particular, are facing more obstacles in getting materials to distant markets. The MPCA continues to explore ways to better support county recycling programs and secondary markets, recover more recyclable and organic material from the waste stream, and identify more opportunities to reduce, reuse, and recycle in the manufacturing and business sectors.

## County funding

Between 1991 and 2005, overall SCORE expenditures have increased by 50 percent. These increases have been funded entirely at the local level by counties and cities through use of general revenue, special assessments, or other sources of revenue. In 2005, we saw the largest increase in total SCORE expenditures by \$3.3 million dollars (6.4 percent). Greater Minnesota counties increased expenditures by \$7.6 million (34 percent) and the metro counties decreased their spending by \$4.3 million (15 percent) from 2004.

Each county is required to match the funding from the Legislature with a local contribution of at least 25 percent. In 2005, counties continue to exceed this match, spending over \$41.8 million of county funds toward SCORE-related activities. This investment is in addition to undocumented dollars spent by other local units of government, such as cities and townships on programs such as recycling, household hazardous waste, and waste education.

In looking at how the dollars were spent in 2005 compared to 2004, we saw the highest percentage increases in spending by Minnesota counties in the following areas:

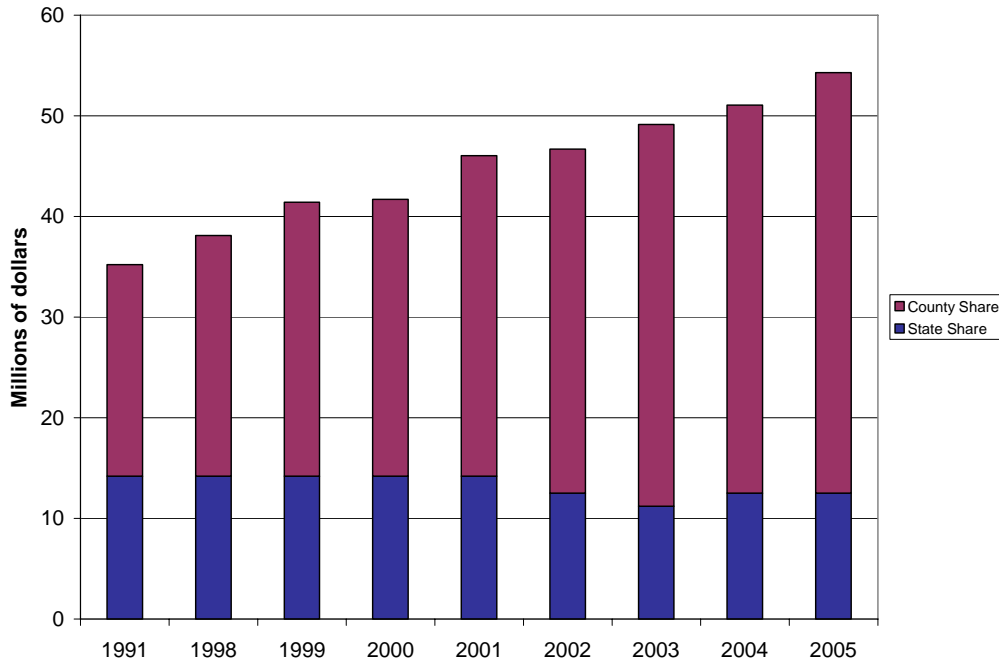
- household hazardous waste up 14 percent
- yard waste up 12 percent
- education up 12 percent
- recycling up 4 percent
- source-separated reduction up 9 percent

Market development and litter prevention took the only drop in spending, by 15 percent and 17 percent respectively.



Figure 6 indicates this trend and shows the continued reliance on local dollars to fund reduction, recycling, HHW, and other SCORE programs.

**Figure 6: SCORE Expenditures (millions of dollars)**



|                   | 1991        | 1998        | 1999        | 2000        | 2001        | 2002        | 2003        | 2004        | 2005         | Change 2004-05 |
|-------------------|-------------|-------------|-------------|-------------|-------------|-------------|-------------|-------------|--------------|----------------|
| Greater Minnesota | 14.4        | 21.5        | 23.0        | 23.1        | 25.8        | 26.7        | 29.5        | 28.5        | 30.22        | 33.7%          |
| Metropolitan Area | 20.8        | 16.7        | 18.4        | 18.6        | 20.2        | 19.9        | 19.7        | 22.6        | 24.06        | (15.4%)        |
| <b>Total</b>      | <b>35.2</b> | <b>38.1</b> | <b>41.4</b> | <b>41.7</b> | <b>46.0</b> | <b>46.7</b> | <b>49.1</b> | <b>51.1</b> | <b>54.28</b> | <b>6.3%</b>    |

Decreases indicated by parentheses (x%). The annual SCORE survey includes only county spending; local units of government also fund programs for waste management, reduction, and recycling.

# Appendix A:

## County SCORE Survey Responses

## County Survey Responses

### Finances: Revenues (part 1)

| County            | CY2004<br>revenue<br>carried over | Adjustment<br>to carryover | General<br>revenue | Service fee | Processing<br>facility tip<br>fee | Land<br>disposal<br>facility<br>surcharge |
|-------------------|-----------------------------------|----------------------------|--------------------|-------------|-----------------------------------|---|
| Aitkin            | \$145,883                         | 0                          | \$173,425          | \$800       | \$22,766                          | \$0                                       |
| Anoka             | \$4,732                           | 0                          | \$112,050          | \$0         | \$0                               | \$0                                       |
| Becker            | \$0                               | 0                          | \$0                | \$408,391   | \$0                               | \$0                                       |
| Beltrami          | \$0                               | 0                          | \$0                | \$385,485   | \$0                               | \$0                                       |
| Benton            | \$0                               | 0                          | \$0                | \$174,402   | \$0                               | \$0                                       |
| Big Stone         | (\$46,629)                        | 46,629                     | \$116,270          | \$288       | \$0                               | \$0                                       |
| Blue Earth        | \$0                               | 0                          | \$0                | \$100,935   | \$0                               | \$0                                       |
| Brown             | (\$26,020)                        | 26,020                     | \$0                | \$0         | \$324,703                         | \$0                                       |
| Carlton           | \$0                               | 0                          | \$17,462           | \$0         | \$125,682                         | \$0                                       |
| Carver            | \$0                               | 0                          | \$0                | \$454,816   | \$0                               | \$0                                       |
| Cass              | \$0                               | 0                          | \$0                | \$690,175   | \$0                               | \$0                                       |
| Chippewa          | \$0                               | 0                          | \$106,035          | \$0         | \$0                               | \$0                                       |
| Chisago           | \$63,518                          | 0                          | \$0                | \$84,709    | \$0                               | \$0                                       |
| Clay              | \$32,423                          | 0                          | \$0                | \$574,257   | \$0                               | \$0                                       |
| Clearwater        | \$0                               | 0                          | \$0                | \$53,112    | \$0                               | \$0                                       |
| Cook              | \$0                               | 0                          | \$176,039          | \$0         | \$0                               | \$0                                       |
| Cottonwood        | \$74,097                          | 0                          | \$0                | \$183,578   | \$0                               | \$0                                       |
| Crow Wing         | \$0                               | 0                          | \$440,587          | \$0         | \$68,890                          | \$0                                       |
| Dakota            | \$0                               | 0                          | \$0                | \$0         | \$0                               | \$1,094,819                               |
| Dodge             | \$10,422                          | 0                          | \$164,806          | \$0         | \$21,530                          | \$0                                       |
| Faribault         | (\$3,865)                         | 3,865                      | \$11,976           | \$7,044     | \$0                               | \$0                                       |
| Fillmore          | \$19,187                          | 0                          | \$12,260           | \$0         | \$0                               | \$0                                       |
| Freeborn          | \$0                               | 0                          | \$316,348          | \$1,080     | \$0                               | \$0                                       |
| Goodhue           | \$0                               | 0                          | \$212,921          | \$15,451    | \$0                               | \$0                                       |
| Grant             | (\$2,013)                         | 2,013                      | \$0                | \$179,912   | \$0                               | \$0                                       |
| Hennepin          | \$0                               | 0                          | \$0                | \$7,592,574 | \$8,382                           | \$0                                       |
| Houston           | \$0                               | 0                          | \$129,960          | \$0         | \$0                               | \$0                                       |
| Hubbard           | \$0                               | 0                          | \$13,750           | \$527,734   | \$0                               | \$0                                       |
| Isanti            | \$88,187                          | 0                          | \$20,253           | \$0         | \$0                               | \$0                                       |
| Itasca            | \$0                               | 0                          | \$328,101          | \$0         | \$0                               | \$0                                       |
| Jackson           | \$123,659                         | 0                          | \$21,978           | \$0         | \$0                               | \$0                                       |
| Kanabec           | \$101,466                         | 0                          | \$12,270           | \$0         | \$0                               | \$0                                       |
| Kandiyohi         | \$0                               | 0                          | \$0                | \$239,004   | \$0                               | \$0                                       |
| Kittson           | \$0                               | 0                          | \$36,645           | \$0         | \$43,472                          | \$0                                       |
| Koochiching       | \$0                               | 0                          | \$71,171           | \$71,171    | \$0                               | \$0                                       |
| Lac qui Parle     | \$23,390                          | 0                          | \$100,836          | \$0         | \$0                               | \$0                                       |
| Lake              | (\$158,692)                       | 158,692                    | \$0                | \$103,538   | \$0                               | \$0                                       |
| Lake of The Woods | \$0                               | 0                          | \$106,962          | \$0         | \$0                               | \$0                                       |
| Le Sueur          | \$0                               | 0                          | \$99,315           | \$0         | \$0                               | \$0                                       |
| Lincoln           | \$58,769                          | 0                          | \$46,312           | \$13,083    | \$0                               | \$0                                       |
| Lyon              | \$0                               | 0                          | \$0                | \$337,422   | \$0                               | \$42,701                                  |
| Mahnomen          | \$35,915                          | 0                          | \$12,270           | \$0         | \$0                               | \$0                                       |
| Marshall          | \$0                               | 0                          | \$27,974           | \$0         | \$0                               | \$0                                       |
| Martin            | \$65,797                          | 0                          | \$127,898          | \$0         | \$0                               | \$0                                       |
| McLeod            | \$0                               | 0                          | \$0                | \$0         | \$156,890                         | \$696,589                                 |
| Meeker            | \$29,987                          | 0                          | \$15,000           | \$0         | \$0                               | \$0                                       |
| Mille Lacs        | \$0                               | 0                          | \$95,000           | \$0         | \$0                               | \$0                                       |
| Morrison          | \$0                               | 0                          | \$63,686           | \$0         | \$0                               | \$0                                       |

## County Survey Responses

### Finances: Revenues (part 1)

| County               | CY2004<br>revenue<br>carried over | Adjustment<br>to carryover | General<br>revenue | Service fee         | Processing<br>facility tip<br>fee | Land<br>disposal<br>facility<br>surcharge |
|----------------------|-----------------------------------|----------------------------|--------------------|---------------------|-----------------------------------|---|
| Mower                | \$104,460                         | 0                          | \$0                | \$115,867           | \$0                               | \$0                                       |
| Murray               | \$4,868                           | 0                          | \$13,750           | \$0                 | \$0                               | \$0                                       |
| Nicollet             | \$0                               | 0                          | \$249,291          | \$0                 | \$0                               | \$0                                       |
| Nobles               | \$121,172                         | 0                          | \$9,864            | \$174,900           | \$0                               | \$137,876                                 |
| Norman               | \$11,077                          | 0                          | \$21,851           | \$0                 | \$0                               | \$0                                       |
| Olmsted              | (\$385,761)                       | 385,761                    | \$0                | \$0                 | \$440,630                         | \$0                                       |
| Otter Tail           | \$15,200                          | 0                          | \$0                | \$541,846           | \$0                               | \$0                                       |
| Pennington           | \$0                               | 0                          | \$22,223           | \$0                 | \$0                               | \$0                                       |
| Pine                 | \$0                               | 0                          | \$94,061           | \$0                 | \$0                               | \$0                                       |
| Pipestone            | \$0                               | 0                          | \$109,876          | \$0                 | \$0                               | \$0                                       |
| Polk                 | \$121,014                         | 0                          | \$0                | \$167,494           | \$0                               | \$0                                       |
| Pope/Douglas         | \$59,400                          | 0                          | \$200,000          | \$0                 | \$0                               | \$0                                       |
| Ramsey               | \$584,824                         | 0                          | \$0                | \$3,967,450         | \$0                               | \$0                                       |
| Red Lake             | \$0                               | 0                          | \$4,405            | \$0                 | \$0                               | \$0                                       |
| Redwood              | (\$3)                             | 3                          | \$0                | \$205,515           | \$0                               | \$0                                       |
| Renville             | \$129,173                         | 0                          | \$157,877          | \$0                 | \$19,327                          | \$0                                       |
| Rice                 | (\$31,233)                        | 31,233                     | \$0                | \$397,819           | \$0                               | \$0                                       |
| Rock                 | (\$4,519)                         | 4,519                      | \$56,248           | \$0                 | \$0                               | \$0                                       |
| Roseau               | (\$44,465)                        | 44,465                     | \$0                | \$0                 | \$0                               | \$0                                       |
| Scott                | \$558,363                         | 0                          | \$99,734           | \$0                 | \$0                               | \$0                                       |
| Sherburne            | \$52,230                          | 0                          | \$0                | \$0                 | \$0                               | \$108,358                                 |
| Sibley               | \$0                               | 0                          | \$128,470          | \$0                 | \$0                               | \$0                                       |
| St. Louis - partial  | \$0                               | 0                          | \$0                | \$494,809           | \$0                               | \$45,193                                  |
| Stearns              | \$97,035                          | 0                          | \$47,858           | \$110,537           | \$0                               | \$0                                       |
| Steele               | \$0                               | 0                          | \$0                | \$268,025           | \$0                               | \$0                                       |
| Stevens              | \$367                             | 0                          | \$48,663           | \$0                 | \$0                               | \$0                                       |
| Swift                | (\$8,414)                         | 8,414                      | \$76,905           | \$0                 | \$0                               | \$0                                       |
| Todd                 | \$0                               | 0                          | \$168,249          | \$0                 | \$0                               | \$0                                       |
| Traverse             | (\$29,005)                        | 29,005                     | \$12,270           | \$0                 | \$0                               | \$0                                       |
| Wabasha              | (\$101,334)                       | 101,334                    | \$12,503           | \$0                 | \$0                               | \$0                                       |
| Wadena               | \$0                               | 0                          | \$52,027           | \$0                 | \$11,149                          | \$0                                       |
| Waseca               | \$0                               | 0                          | \$0                | \$46,369            | \$0                               | \$0                                       |
| Washington           | \$0                               | 0                          | \$0                | \$675,398           | \$0                               | \$0                                       |
| Watonwan             | \$337,417                         | 0                          | \$13,883           | \$126,619           | \$0                               | \$0                                       |
| Wilkin               | \$0                               | 0                          | \$0                | \$62,681            | \$0                               | \$0                                       |
| Winona               | \$10,443                          | 0                          | \$617,560          | \$0                 | \$0                               | \$0                                       |
| WLSSD                | \$0                               | 0                          | \$0                | \$1,232,000         | \$379,970                         | \$0                                       |
| Wright               | \$641,658                         | 0                          | \$57,514           | \$19,508            | \$0                               | \$95,822                                  |
| Yellow Medicine      | \$69,573                          | 0                          | \$12,375           | \$53,198            | \$0                               | \$9,090                                   |
| <b>Metro Area</b>    | <b>\$641,786</b>                  | <b>\$0</b>                 | <b>\$112,050</b>   | <b>\$12,690,238</b> | <b>\$8,382</b>                    | <b>\$1,203,177</b>                        |
| <b>Greater Minn.</b> | <b>\$2,311,967</b>                | <b>\$841,953</b>           | <b>\$5,364,965</b> | <b>\$8,168,758</b>  | <b>\$1,615,009</b>                | <b>\$1,027,271</b>                        |
| <b>Minnesota</b>     | <b>\$2,953,754</b>                | <b>\$841,953</b>           | <b>\$5,477,015</b> | <b>\$20,858,996</b> | <b>\$1,623,391</b>                | <b>\$2,230,448</b>                        |

## County Survey Responses

### Finances: Revenues (part 2)

| County            | SCORE pass<br>through | Grants    | HHW funding | Material<br>sales | Other       | Total<br>Revenue |
|-------------------|-----------------------|-----------|-------------|-------------------|-------------|------------------|
| Aitkin            | \$49,079              | \$2,885   | \$0         | \$0               | \$0         | \$394,839        |
| Anoka             | \$710,571             | \$127,994 | \$0         | \$0               | \$1,857,769 | \$2,813,116      |
| Becker            | \$71,020              | \$0       | \$22,072    | \$269             | \$0         | \$501,752        |
| Beltrami          | \$94,600              | \$0       | \$8,107     | \$0               | \$0         | \$488,192        |
| Benton            | \$84,569              | \$0       | \$1,072     | \$0               | \$12,380    | \$272,423        |
| Big Stone         | \$49,079              | \$0       | \$2,400     | \$0               | \$0         | \$168,036        |
| Blue Earth        | \$130,325             | \$0       | \$66,858    | \$0               | \$44,898    | \$343,017        |
| Brown             | \$60,608              | \$0       | \$3,230     | \$0               | \$12,840    | \$401,381        |
| Carlton           | \$75,454              | \$12,034  | \$7,453     | \$0               | \$0         | \$238,085        |
| Carver            | \$180,509             | \$95,595  | \$0         | \$0               | \$136,132   | \$867,052        |
| Cass              | \$63,886              | \$0       | \$7,477     | \$0               | \$5,400     | \$766,938        |
| Chippewa          | \$49,079              | \$0       | \$2,400     | \$0               | \$0         | \$157,514        |
| Chisago           | \$107,017             | \$0       | \$25,569    | \$515             | \$12,078    | \$293,405        |
| Clay              | \$118,339             | \$0       | \$11,383    | \$0               | \$1,267     | \$737,670        |
| Clearwater        | \$49,079              | \$0       | \$4,776     | \$0               | \$0         | \$106,967        |
| Cook              | \$49,079              | \$0       | \$0         | \$62,998          | \$0         | \$288,117        |
| Cottonwood        | \$49,079              | \$0       | \$0         | \$7,047           | \$21,695    | \$335,496        |
| Crow Wing         | \$132,842             | \$5,000   | \$13,051    | \$0               | \$0         | \$660,370        |
| Dakota            | \$855,693             | \$0       | \$0         | \$0               | \$76,943    | \$2,027,455      |
| Dodge             | \$49,079              | \$0       | \$2,025     | \$150,764         | \$16,863    | \$415,488        |
| Faribault         | \$49,079              | \$0       | \$0         | \$0               | \$14,088    | \$82,187         |
| Fillmore          | \$49,039              | \$4,144   | \$6,723     | \$0               | \$1,134     | \$92,487         |
| Freeborn          | \$72,221              | \$0       | \$10,864    | \$962             | \$0         | \$401,475        |
| Goodhue           | \$102,478             | \$0       | \$13,949    | \$164,632         | \$0         | \$509,431        |
| Grant             | \$49,079              | \$0       | \$0         | \$0               | \$150       | \$229,141        |
| Hennepin          | \$2,575,916           | \$337,141 | \$26,738    | \$530,584         | \$106,961   | \$11,178,296     |
| Houston           | \$49,079              | \$0       | \$4,387     | \$129,924         | \$8,493     | \$321,843        |
| Hubbard           | \$49,079              | \$0       | \$3,920     | \$0               | \$0         | \$594,483        |
| Isanti            | \$81,011              | \$0       | \$2,662     | \$0               | \$0         | \$192,112        |
| Itasca            | \$99,749              | \$0       | \$5,995     | \$0               | \$0         | \$433,845        |
| Jackson           | \$49,079              | \$0       | \$0         | \$0               | \$6,412     | \$201,128        |
| Kanabec           | \$0                   | \$49,079  | \$587       | \$0               | \$0         | \$163,402        |
| Kandiyohi         | \$93,260              | \$0       | \$74,108    | \$400,615         | \$91,762    | \$898,749        |
| Kittson           | \$49,079              | \$0       | \$5,362     | \$25,501          | \$2,909     | \$162,968        |
| Koochiching       | \$49,079              | \$0       | \$4,177     | \$26,726          | \$5,202     | \$227,526        |
| Lac qui Parle     | \$49,079              | \$0       | \$2,400     | \$0               | \$0         | \$175,705        |
| Lake              | \$0                   | \$0       | \$5,636     | \$21,862          | \$2,046     | \$133,082        |
| Lake of The Woods | \$49,079              | \$0       | \$0         | \$23,195          | \$1,943     | \$181,179        |
| Le Sueur          | \$61,033              | \$0       | \$3,555     | \$32,078          | \$12,222    | \$208,204        |
| Lincoln           | \$49,079              | \$4,740   | \$0         | \$0               | \$0         | \$171,983        |
| Lyon              | \$56,437              | \$0       | \$80,877    | \$267             | \$3,717     | \$521,421        |
| Mahnomen          | \$49,079              | \$0       | \$2,956     | \$0               | \$62        | \$100,282        |
| Marshall          | \$49,079              | \$0       | \$5,815     | \$15,374          | \$21,435    | \$119,676        |
| Martin            | \$49,079              | \$0       | \$0         | \$0               | \$4,073     | \$246,847        |
| McLeod            | \$81,285              | \$49,783  | \$11,702    | \$260,827         | \$14,301    | \$1,271,377      |
| Meeker            | \$52,389              | \$0       | \$2,400     | \$0               | \$0         | \$99,776         |
| Mille Lacs        | \$55,567              | \$0       | \$3,817     | \$0               | \$0         | \$154,384        |
| Morrison          | \$73,807              | \$0       | \$7,339     | \$0               | \$626,908   | \$771,740        |
| Mower             | \$87,854              | \$2,440   | \$14,777    | \$191,406         | \$600       | \$517,404        |

## County Survey Responses

### Finances: Revenues (part 2)

| County               | SCORE pass<br>through | Grants             | HHW funding        | Material<br>sales  | Other              | Total<br>Revenue    |
|----------------------|-----------------------|--------------------|--------------------|--------------------|--------------------|---------------------|
| Murray               | \$49,079              | \$342              | \$0                | \$0                | \$40,311           | \$108,350           |
| Nicollet             | \$69,959              | \$0                | \$7,464            | \$0                | \$10,080           | \$336,794           |
| Nobles               | \$49,079              | \$0                | \$0                | \$0                | \$4,854            | \$497,745           |
| Norman               | \$49,079              | \$0                | \$3,222            | \$0                | \$0                | \$85,229            |
| Olmsted              | \$300,333             | \$0                | \$125,416          | \$0                | \$750,601          | \$1,616,980         |
| Otter Tail           | \$132,463             | \$0                | \$36,084           | \$577,012          | \$33,360           | \$1,335,965         |
| Pennington           | \$49,079              | \$0                | \$0                | \$0                | \$2,768            | \$74,070            |
| Pine                 | \$62,939              | \$0                | \$0                | \$0                | \$0                | \$157,000           |
| Pipestone            | \$49,079              | \$0                | \$0                | \$0                | \$0                | \$158,955           |
| Polk                 | \$70,060              | \$0                | \$7,477            | \$78,451           | \$5,374            | \$449,870           |
| Pope/Douglas         | \$126,563             | \$0                | \$13,981           | \$0                | \$7,548            | \$407,491           |
| Ramsey               | \$1,162,492           | \$172,135          | \$0                | \$0                | \$139,752          | \$6,026,653         |
| Red Lake             | \$49,079              | \$0                | \$5,337            | \$11,691           | \$0                | \$70,512            |
| Redwood              | \$49,079              | \$0                | \$33,417           | \$136,094          | \$0                | \$424,105           |
| Renville             | \$49,079              | \$0                | \$0                | \$0                | \$0                | \$355,456           |
| Rice                 | \$135,706             | \$0                | \$30,508           | \$569,880          | \$62,881           | \$1,196,794         |
| Rock                 | \$49,079              | \$0                | \$0                | \$0                | \$5,847            | \$111,174           |
| Roseau               | \$49,079              | \$0                | \$6,294            | \$20,333           | \$5,454            | \$81,160            |
| Scott                | \$245,622             | \$0                | \$0                | \$0                | \$0                | \$903,719           |
| Sherburne            | \$173,430             | \$0                | \$2,760            | \$0                | \$2,374            | \$339,152           |
| Sibley               | \$49,079              | \$0                | \$2,629            | \$25,025           | \$10,692           | \$215,895           |
| St. Louis - partial  | \$212,615             | \$8,882            | \$20,726           | \$364,146          | \$0                | \$1,146,371         |
| Stearns              | \$314,227             | \$0                | \$5,951            | \$0                | \$55,063           | \$630,671           |
| Steele               | \$78,787              | \$0                | \$11,649           | \$0                | \$564              | \$359,025           |
| Stevens              | \$49,079              | \$0                | \$0                | \$0                | \$32               | \$98,141            |
| Swift                | \$49,079              | \$0                | \$2,400            | \$116,246          | \$0                | \$244,630           |
| Todd                 | \$55,233              | \$0                | \$11,633           | \$95,866           | \$0                | \$330,981           |
| Traverse             | \$49,079              | \$0                | \$0                | \$0                | \$0                | \$61,349            |
| Wabasha              | \$75,102              | \$0                | \$2,822            | \$141              | \$1,275            | \$91,843            |
| Wadena               | \$49,079              | \$0                | \$2,784            | \$368              | \$0                | \$115,406           |
| Waseca               | \$49,079              | \$0                | \$7,766            | \$156,188          | \$1,036            | \$260,438           |
| Washington           | \$485,897             | \$121,471          | \$0                | \$0                | \$61,401           | \$1,344,167         |
| Watonwan             | \$49,079              | \$0                | \$2,006            | \$0                | \$1,203            | \$530,208           |
| Wilkin               | \$49,079              | \$0                | \$0                | \$142,511          | \$650              | \$254,921           |
| Winona               | \$112,225             | \$0                | \$28,851           | \$70,410           | \$6,297            | \$845,786           |
| WLSSD                | \$235,139             | \$7,733            | \$273,134          | \$55,511           | \$248,015          | \$2,431,501         |
| Wright               | \$236,541             | \$2,414            | \$9,481            | \$2,572            | \$41,072           | \$1,106,582         |
| Yellow Medicine      | \$49,079              | \$0                | \$0                | \$0                | \$450              | \$193,765           |
| <b>Metro Area</b>    | <b>\$6,144,508</b>    | <b>\$854,336</b>   | <b>\$29,498</b>    | <b>\$530,584</b>   | <b>\$2,381,332</b> | <b>\$24,595,891</b> |
| <b>Greater Minn.</b> | <b>\$6,282,385</b>    | <b>\$149,476</b>   | <b>\$1,102,914</b> | <b>\$3,937,406</b> | <b>\$2,240,304</b> | <b>\$33,042,407</b> |
| <b>Minnesota</b>     | <b>\$12,426,893</b>   | <b>\$1,003,812</b> | <b>\$1,132,412</b> | <b>\$4,467,990</b> | <b>\$4,621,636</b> | <b>\$57,638,298</b> |

## County Survey Responses

### Finances: Revenue summary

| County            | Adjusted CY2004<br>Revenue (carried over) | CY2005<br>Revenue | Total<br>Revenue |
|-------------------|---|-------------------|------------------|
| Aitkin            | \$145,883                                 | \$248,955         | \$394,839        |
| Anoka             | \$4,732                                   | \$2,808,384       | \$2,813,116      |
| Becker            | \$0                                       | \$501,752         | \$501,752        |
| Beltrami          | \$0                                       | \$488,192         | \$488,192        |
| Benton            | \$0                                       | \$272,423         | \$272,423        |
| Big Stone         | \$0                                       | \$168,036         | \$168,036        |
| Blue Earth        | \$0                                       | \$343,017         | \$343,017        |
| Brown             | \$0                                       | \$401,381         | \$401,381        |
| Carlton           | \$0                                       | \$238,085         | \$238,085        |
| Carver            | \$0                                       | \$867,052         | \$867,052        |
| Cass              | \$0                                       | \$766,938         | \$766,938        |
| Chippewa          | \$0                                       | \$157,514         | \$157,514        |
| Chisago           | \$63,518                                  | \$229,887         | \$293,405        |
| Clay              | \$32,423                                  | \$705,247         | \$737,670        |
| Clearwater        | \$0                                       | \$106,967         | \$106,967        |
| Cook              | \$0                                       | \$288,117         | \$288,117        |
| Cottonwood        | \$74,097                                  | \$261,399         | \$335,496        |
| Crow Wing         | \$0                                       | \$660,370         | \$660,370        |
| Dakota            | \$0                                       | \$2,027,455       | \$2,027,455      |
| Dodge             | \$10,422                                  | \$405,066         | \$415,488        |
| Faribault         | \$0                                       | \$82,187          | \$82,187         |
| Fillmore          | \$19,187                                  | \$73,301          | \$92,487         |
| Freeborn          | \$0                                       | \$401,475         | \$401,475        |
| Goodhue           | \$0                                       | \$509,431         | \$509,431        |
| Grant             | \$0                                       | \$229,141         | \$229,141        |
| Hennepin          | \$0                                       | \$11,178,296      | \$11,178,296     |
| Houston           | \$0                                       | \$321,843         | \$321,843        |
| Hubbard           | \$0                                       | \$594,483         | \$594,483        |
| Isanti            | \$88,187                                  | \$103,926         | \$192,112        |
| Itasca            | \$0                                       | \$433,845         | \$433,845        |
| Jackson           | \$123,659                                 | \$77,469          | \$201,128        |
| Kanabec           | \$101,466                                 | \$61,936          | \$163,402        |
| Kandiyohi         | \$0                                       | \$898,749         | \$898,749        |
| Kittson           | \$0                                       | \$162,968         | \$162,968        |
| Koochiching       | \$0                                       | \$227,526         | \$227,526        |
| Lac qui Parle     | \$23,390                                  | \$152,315         | \$175,705        |
| Lake              | \$0                                       | \$133,082         | \$133,082        |
| Lake of The Woods | \$0                                       | \$181,179         | \$181,179        |
| Le Sueur          | \$0                                       | \$208,204         | \$208,204        |
| Lincoln           | \$58,769                                  | \$113,214         | \$171,983        |
| Lyon              | \$0                                       | \$521,421         | \$521,421        |
| Mahnomen          | \$35,915                                  | \$64,367          | \$100,282        |
| Marshall          | \$0                                       | \$119,676         | \$119,676        |
| Martin            | \$65,797                                  | \$181,050         | \$246,847        |
| McLeod            | \$0                                       | \$1,271,377       | \$1,271,377      |
| Meeker            | \$29,987                                  | \$69,789          | \$99,776         |
| Mille Lacs        | \$0                                       | \$154,384         | \$154,384        |
| Morrison          | \$0                                       | \$771,740         | \$771,740        |

## County Survey Responses

### Finances: Revenue summary

| County              | Adjusted CY2004<br>Revenue (carried over) | CY2005<br>Revenue | Total<br>Revenue |
|---------------------|---|-------------------|------------------|
| Mower               | \$104,460                                 | \$412,944         | \$517,404        |
| Murray              | \$4,868                                   | \$103,482         | \$108,350        |
| Nicollet            | \$0                                       | \$336,794         | \$336,794        |
| Nobles              | \$121,172                                 | \$376,573         | \$497,745        |
| Norman              | \$11,077                                  | \$74,152          | \$85,229         |
| Olmsted             | \$0                                       | \$1,616,980       | \$1,616,980      |
| Otter Tail          | \$15,200                                  | \$1,320,765       | \$1,335,965      |
| Pennington          | \$0                                       | \$74,070          | \$74,070         |
| Pine                | \$0                                       | \$157,000         | \$157,000        |
| Pipestone           | \$0                                       | \$158,955         | \$158,955        |
| Polk                | \$121,014                                 | \$328,856         | \$449,870        |
| Pope/Douglas        | \$59,400                                  | \$348,092         | \$407,491        |
| Ramsey              | \$584,824                                 | \$5,441,829       | \$6,026,653      |
| Red Lake            | \$0                                       | \$70,512          | \$70,512         |
| Redwood             | \$0                                       | \$424,105         | \$424,105        |
| Renville            | \$129,173                                 | \$226,283         | \$355,456        |
| Rice                | \$0                                       | \$1,196,794       | \$1,196,794      |
| Rock                | \$0                                       | \$111,174         | \$111,174        |
| Roseau              | \$0                                       | \$81,160          | \$81,160         |
| Scott               | \$558,363                                 | \$345,356         | \$903,719        |
| Sherburne           | \$52,230                                  | \$286,922         | \$339,152        |
| Sibley              | \$0                                       | \$215,895         | \$215,895        |
| St. Louis - partial | \$0                                       | \$1,146,371       | \$1,146,371      |
| Stearns             | \$97,035                                  | \$533,636         | \$630,671        |
| Steele              | \$0                                       | \$359,025         | \$359,025        |
| Stevens             | \$367                                     | \$97,774          | \$98,141         |
| Swift               | \$0                                       | \$244,630         | \$244,630        |
| Todd                | \$0                                       | \$330,981         | \$330,981        |
| Traverse            | \$0                                       | \$61,349          | \$61,349         |
| Wabasha             | \$0                                       | \$91,843          | \$91,843         |
| Wadena              | \$0                                       | \$115,406         | \$115,406        |
| Waseca              | \$0                                       | \$260,438         | \$260,438        |
| Washington          | \$0                                       | \$1,344,167       | \$1,344,167      |
| Watsonwan           | \$337,417                                 | \$192,790         | \$530,208        |
| Wilkin              | \$0                                       | \$254,921         | \$254,921        |
| Winona              | \$10,443                                  | \$835,343         | \$845,786        |
| WLSSD               | \$0                                       | \$2,431,501       | \$2,431,501      |
| Wright              | \$641,658                                 | \$464,924         | \$1,106,582      |
| Yellow Medicine     | \$69,573                                  | \$124,192         | \$193,765        |
| <hr/>               |   |                   |                  |
| Metro Area          | \$641,786                                 | \$23,954,105      | \$24,595,891     |
| Greater Minn.       | \$3,153,920                               | \$29,888,487      | \$33,042,407     |
| Minnesota           | \$3,795,706                               | \$53,842,592      | \$57,638,298     |



## County Survey Responses

### Finances: Expenditures by program area (part 1)

| County            | Planning &<br>administration | Recycling   | Yard waste | HHW and<br>problem<br>materials | Source<br>reduction |
|-------------------|------------------------------|-------------|------------|---------------------------------|---------------------|
| Aitkin            | \$127,599                    | \$113,978   | \$642      | \$20,014                        | \$445               |
| Anoka             | \$534,701                    | \$15,078    | \$102,894  | \$1,231,699                     | \$24,826            |
| Becker            | \$159,109                    | \$193,847   | \$2,210    | \$76,116                        | \$0                 |
| Beltrami          | \$110,000                    | \$358,900   | \$0        | \$19,292                        | \$0                 |
| Benton            | \$114,252                    | \$466       | \$0        | \$37,698                        | \$0                 |
| Big Stone         | \$44,344                     | \$114,382   | \$0        | \$7,745                         | \$0                 |
| Blue Earth        | \$8,110                      | \$197,426   | \$0        | \$89,056                        | \$0                 |
| Brown             | \$30,776                     | \$325,743   | \$0        | \$35,929                        | \$0                 |
| Carlton           | \$66,079                     | \$88,129    | \$2,662    | \$64,487                        | \$0                 |
| Carver            | \$303,297                    | \$60,499    | \$32,634   | \$380,590                       | \$1,244             |
| Cass              | \$138,229                    | \$557,355   | \$0        | \$62,946                        | \$4,731             |
| Chippewa          | \$28,436                     | \$125,893   | \$0        | \$2,737                         | \$0                 |
| Chisago           | \$98,613                     | \$59,374    | \$0        | \$80,352                        | \$0                 |
| Clay              | \$191,102                    | \$222,470   | \$20,593   | \$86,942                        | \$0                 |
| Clearwater        | \$21,403                     | \$52,965    | \$2,932    | \$28,778                        | \$0                 |
| Cook              | \$192,113                    | \$84,625    | \$0        | \$11,006                        | \$0                 |
| Cottonwood        | \$134,590                    | \$58,551    | \$0        | \$16,626                        | \$0                 |
| Crow Wing         | \$148,389                    | \$71,054    | \$25,543   | \$161,958                       | \$0                 |
| Dakota            | \$869,467                    | \$17,924    | \$0        | \$685,634                       | \$0                 |
| Dodge             | \$32,721                     | \$223,870   | \$31,749   | \$33,706                        | \$31,749            |
| Faribault         | \$30,633                     | \$14,964    | \$0        | \$12,059                        | \$0                 |
| Fillmore          | \$12,395                     | \$23,596    | \$0        | \$22,659                        | \$0                 |
| Freeborn          | \$93,946                     | \$296,740   | \$2,490    | \$17,201                        | \$0                 |
| Goodhue           | \$333,556                    | \$79,838    | \$0        | \$24,729                        | \$0                 |
| Grant             | \$0                          | \$169,701   | \$0        | \$51,176                        | \$0                 |
| Hennepin          | \$1,588,277                  | \$1,221,017 | \$29,252   | \$5,151,942                     | \$181,904           |
| Houston           | \$17,872                     | \$297,191   | \$0        | \$5,111                         | \$0                 |
| Hubbard           | \$69,393                     | \$376,127   | \$4,055    | \$125,544                       | \$0                 |
| Isanti            | \$49,439                     | \$33,004    | \$0        | \$7,870                         | \$0                 |
| Itasca            | \$92,294                     | \$297,859   | \$263      | \$41,349                        | \$0                 |
| Jackson           | \$38,212                     | \$46,538    | \$0        | \$10,817                        | \$0                 |
| Kanabec           | \$5,667                      | \$62,170    | \$0        | \$6,217                         | \$0                 |
| Kandiyohi         | \$226,984                    | \$576,091   | \$0        | \$95,674                        | \$0                 |
| Kittson           | \$34,353                     | \$0         | \$0        | \$2,403                         | \$0                 |
| Koochiching       | \$101,684                    | \$100,405   | \$4,308    | \$15,369                        | \$0                 |
| Lac qui Parle     | \$49,936                     | \$49,664    | \$0        | \$2,722                         | \$0                 |
| Lake              | \$76,677                     | \$129,067   | \$40,989   | \$27,994                        | \$0                 |
| Lake of The Woods | \$2,267                      | \$158,313   | \$956      | \$18,847                        | \$0                 |
| Le Sueur          | \$47,924                     | \$47,296    | \$0        | \$58,967                        | \$0                 |
| Lincoln           | \$41,000                     | \$61,532    | \$0        | \$10,702                        | \$0                 |
| Lyon              | \$39,129                     | \$253,122   | \$0        | \$187,996                       | \$0                 |
| Mahnomen          | \$39,601                     | \$7,790     | \$0        | \$10,809                        | \$0                 |
| Marshall          | \$23,392                     | \$14,385    | \$0        | \$9,661                         | \$0                 |
| Martin            | \$46,335                     | \$174,564   | \$314      | \$7,061                         | \$291               |
| McLeod            | \$366,459                    | \$405,409   | \$76,903   | \$51,186                        | \$0                 |
| Meeker            | \$11,744                     | \$22,251    | \$0        | \$12,824                        | \$0                 |
| Mille Lacs        | \$56,026                     | \$92,112    | \$0        | \$9,885                         | \$0                 |
| Morrison          | \$53,130                     | \$261,706   | \$8,863    | \$359,597                       | \$0                 |

## County Survey Responses

### Finances: Expenditures by program area (part 1)

| County              | Planning &<br>administration | Recycling    | Yard waste  | HHW and<br>problem<br>materials | Source<br>reduction |
|---------------------|------------------------------|--------------|-------------|---------------------------------|---------------------|
| Mower               | \$100,398                    | \$399,481    | \$0         | \$10,216                        | \$0                 |
| Murray              | \$42,373                     | \$25,248     | \$0         | \$2,322                         | \$0                 |
| Nicollet            | \$53,455                     | \$181,151    | \$0         | \$63,419                        | \$0                 |
| Nobles              | \$84,155                     | \$200,524    | \$0         | \$85,279                        | \$0                 |
| Norman              | \$21,709                     | \$51,797     | \$0         | \$10,670                        | \$0                 |
| Olmsted             | \$52,608                     | \$880,655    | \$156,824   | \$372,712                       | \$114,293           |
| Otter Tail          | \$542,215                    | \$482,882    | \$3,420     | \$216,670                       | \$5,012             |
| Pennington          | \$0                          | \$66,457     | \$0         | \$7,613                         | \$0                 |
| Pine                | \$41,574                     | \$99,600     | \$507       | \$1,300                         | \$0                 |
| Pipestone           | \$20,911                     | \$133,813    | \$0         | \$2,454                         | \$0                 |
| Polk                | \$45,795                     | \$212,943    | \$2,925     | \$56,786                        | \$0                 |
| Pope/Douglas        | \$157,049                    | \$235,328    | \$0         | \$26,644                        | \$0                 |
| Ramsey              | \$1,545,324                  | \$95,458     | \$1,342,395 | \$1,129,593                     | \$13,436            |
| Red Lake            | \$17,709                     | \$45,486     | \$0         | \$6,333                         | \$0                 |
| Redwood             | \$225,613                    | \$185,049    | \$0         | \$13,720                        | \$3,500             |
| Renville            | \$58,425                     | \$175,125    | \$0         | \$8,587                         | \$0                 |
| Rice                | \$490,535                    | \$535,906    | \$37,000    | \$135,964                       | \$500               |
| Rock                | \$47,976                     | \$48,934     | \$1,958     | \$13,390                        | \$600               |
| Roseau              | \$15,789                     | \$0          | \$0         | \$22,772                        | \$0                 |
| Scott               | \$214,814                    | \$0          | \$0         | \$93,348                        | \$0                 |
| Sherburne           | \$2,534                      | \$22,516     | \$4,411     | \$82,600                        | \$0                 |
| Sibley              | \$41,190                     | \$33,533     | \$0         | \$58,817                        | \$0                 |
| St. Louis - partial | \$127,863                    | \$755,113    | \$590       | \$198,735                       | \$15,606            |
| Stearns             | \$131,492                    | \$45,843     | \$13,291    | \$143,628                       | \$13,291            |
| Steele              | \$99,955                     | \$233,610    | \$427       | \$8,361                         | \$0                 |
| Stevens             | \$38,021                     | \$28,077     | \$475       | \$16,172                        | \$0                 |
| Swift               | \$177,025                    | \$62,436     | \$2,000     | \$11,410                        | \$680               |
| Todd                | \$140,684                    | \$121,906    | \$1,200     | \$60,441                        | \$1,000             |
| Traverse            | \$49,650                     | \$29,520     | \$0         | \$7,243                         | \$0                 |
| Wabasha             | \$53,582                     | \$45,330     | \$0         | \$14,578                        | \$0                 |
| Wadena              | \$9,680                      | \$82,224     | \$1,500     | \$20,921                        | \$0                 |
| Waseca              | \$63,584                     | \$149,571    | \$457       | \$44,777                        | \$0                 |
| Washington          | \$216,795                    | \$10,130     | \$0         | \$586,415                       | \$7,607             |
| Watonwan            | \$12,340                     | \$152,796    | \$0         | \$8,813                         | \$0                 |
| Wilkin              | \$53,159                     | \$160,629    | \$3,500     | \$34,407                        | \$2,230             |
| Winona              | \$220,700                    | \$514,589    | \$0         | \$62,267                        | \$0                 |
| WLSSD               | \$1,152,128                  | \$406,688    | \$105,208   | \$578,783                       | \$0                 |
| Wright              | \$29,438                     | \$26,116     | \$18,479    | \$157,472                       | \$0                 |
| Yellow Medicine     | \$4,292                      | \$92,671     | \$0         | \$1,326                         | \$0                 |
| Metro Area          | \$5,060,395                  | \$1,442,622  | \$1,511,586 | \$9,248,473                     | \$229,017           |
| Greater Minn.       | \$8,243,799                  | \$13,801,493 | \$575,233   | \$4,620,165                     | \$193,927           |
| Minnesota           | \$13,304,194                 | \$15,244,115 | \$2,086,819 | \$13,868,638                    | \$422,944           |

## County Survey Responses

### Finances: Expenditures by program area (part 2)

| County            | Education | Market development | Litter prevention | County grants to other local units of government |
|-------------------|-----------|--------------------|-------------------|--|
| Aitkin            | \$5,349   | \$0                | \$0               | \$0  |
| Anoka             | \$177,887 | \$0                | \$0               | \$726,030  |
| Becker            | \$11,273  | \$0                | \$1,442           | \$57,755   |
| Beltrami          | \$0       | \$0                | \$0               | \$0  |
| Benton            | \$7,500   | \$6,743            | \$0               | \$105,765  |
| Big Stone         | \$1,284   | \$0                | \$0               | \$0  |
| Blue Earth        | \$47,029  | \$0                | \$1,423           | \$0  |
| Brown             | \$6,934   | \$0                | \$0               | \$0  |
| Carlton           | \$1,776   | \$0                | \$0               | \$14,953   |
| Carver            | \$10,303  | \$0                | \$3,640           | \$74,845   |
| Cass              | \$3,677   | \$0                | \$0               | \$0  |
| Chippewa          | \$449     | \$0                | \$0               | \$0  |
| Chisago           | \$18,993  | \$0                | \$0               | \$0  |
| Clay              | \$26,899  | \$0                | \$0               | \$0  |
| Clearwater        | \$889     | \$0                | \$0               | \$0  |
| Cook              | \$373     | \$0                | \$0               | \$0  |
| Cottonwood        | \$2,058   | \$0                | \$0               | \$0  |
| Crow Wing         | \$25,473  | \$0                | \$16,734          | \$211,219  |
| Dakota            | \$219,731 | \$0                | \$0               | \$234,699  |
| Dodge             | \$32,848  | \$900              | \$0               | \$0  |
| Faribault         | \$2,183   | \$0                | \$0               | \$43,807   |
| Fillmore          | \$8,936   | \$0                | \$0               | \$0  |
| Freeborn          | \$4,264   | \$0                | \$0               | \$0  |
| Goodhue           | \$3,782   | \$0                | \$0               | \$0  |
| Grant             | \$0       | \$0                | \$0               | \$0  |
| Hennepin          | \$246,712 | \$0                | \$0               | \$2,759,192                                      |
| Houston           | \$1,668   | \$0                | \$0               | \$0  |
| Hubbard           | \$19,064  | \$0                | \$300             | \$0  |
| Isanti            | \$70      | \$0                | \$0               | \$0  |
| Itasca            | \$2,080   | \$0                | \$0               | \$0  |
| Jackson           | \$6,832   | \$0                | \$0               | \$0  |
| Kanabec           | \$809     | \$0                | \$621             | \$0  |
| Kandiyohi         | \$0       | \$0                | \$0               | \$0  |
| Kittson           | \$0       | \$0                | \$0               | \$126,212  |
| Koochiching       | \$5,544   | \$0                | \$216             | \$0  |
| Lac qui Parle     | \$3,564   | \$0                | \$0               | \$1,500  |
| Lake              | \$658     | \$0                | \$0               | \$0  |
| Lake of The Woods | \$796     | \$0                | \$0               | \$0  |
| Le Sueur          | \$39,541  | \$0                | \$0               | \$14,476   |
| Lincoln           | \$3,933   | \$0                | \$151             | \$0  |
| Lyon              | \$41,174  | \$0                | \$0               | \$0  |
| Mahnomen          | \$1,710   | \$0                | \$0               | \$0  |
| Marshall          | \$0       | \$0                | \$0               | \$72,238   |
| Martin            | \$6,706   | \$0                | \$504             | \$11,072   |
| McLeod            | \$85,047  | \$0                | \$0               | \$286,372  |
| Meeker            | \$20,847  | \$0                | \$0               | \$3,120  |
| Mille Lacs        | \$0       | \$0                | \$0               | \$0  |
| Morrison          | \$1,708   | \$0                | \$0               | \$86,736   |

## County Survey Responses

### Finances: Expenditures by program area (part 2)

| County               | Education          | Market development | Litter prevention | County grants to other local units of government |
|----------------------|--------------------|--------------------|-------------------|--|
| Mower                | \$7,309            | \$0                | \$0               | \$0  |
| Murray               | \$4,451            | \$0                | \$0               | \$108  |
| Nicollet             | \$38,769           | \$0                | \$0               | \$0  |
| Nobles               | \$6,288            | \$0                | \$0               | \$0  |
| Norman               | \$1,053            | \$0                | \$0               | \$0  |
| Olmsted              | \$185,427          | \$0                | \$0               | \$0  |
| Otter Tail           | \$67,920           | \$0                | \$2,645           | \$0  |
| Pennington           | \$0                | \$0                | \$0               | \$0  |
| Pine                 | \$17,129           | \$0                | \$18,196          | \$0  |
| Pipestone            | \$1,777            | \$0                | \$0               | \$0  |
| Polk                 | \$8,760            | \$0                | \$0               | \$15,000   |
| Pope/Douglas         | \$5,748            | \$0                | \$0               | \$0  |
| Ramsey               | \$349,392          | \$0                | \$0               | \$973,387  |
| Red Lake             | \$984              | \$0                | \$0               | \$0  |
| Redwood              | \$8,565            | \$0                | \$0               | \$0  |
| Renville             | \$2,449            | \$0                | \$0               | \$0  |
| Rice                 | \$17,300           | \$1,820            | \$100             | \$0  |
| Rock                 | \$4,834            | \$0                | \$0               | \$0  |
| Roseau               | \$0                | \$0                | \$0               | \$107,455  |
| Scott                | \$77,088           | \$0                | \$0               | \$0  |
| Sherburne            | \$40,863           | \$0                | \$40,926          | \$15,471   |
| Sibley               | \$33,245           | \$0                | \$0               | \$49,110   |
| St. Louis - partial  | \$48,464           | \$0                | \$0               | \$0  |
| Stearns              | \$47,302           | \$13,291           | \$13,291          | \$129,999  |
| Steele               | \$16,672           | \$0                | \$0               | \$0  |
| Stevens              | \$2,285            | \$0                | \$0               | \$0  |
| Swift                | \$3,660            | \$0                | \$0               | \$0  |
| Todd                 | \$5,750            | \$0                | \$0               | \$0  |
| Traverse             | \$0                | \$0                | \$0               | \$4,000  |
| Wabasha              | \$0                | \$0                | \$0               | \$0  |
| Wadena               | \$1,081            | \$0                | \$0               | \$0  |
| Waseca               | \$2,049            | \$0                | \$0               | \$0  |
| Washington           | \$134,050          | \$0                | \$0               | \$389,170  |
| Watonwan             | \$2,567            | \$0                | \$0               | \$0  |
| Wilkin               | \$996              | \$0                | \$0               | \$0  |
| Winona               | \$13,772           | \$0                | \$0               | \$0  |
| WLSSD                | \$111,801          | \$3,917            | \$0               | \$72,976   |
| Wright               | \$11,202           | \$0                | \$0               | \$248,220  |
| Yellow Medicine      | \$3,062            | \$0                | \$0               | \$0  |
| <b>Metro Area</b>    | <b>\$1,178,938</b> | <b>\$0</b>         | <b>\$44,566</b>   | <b>\$5,172,794</b>                               |
| <b>Greater Minn.</b> | <b>\$1,213,480</b> | <b>\$26,671</b>    | <b>\$55,623</b>   | <b>\$1,662,094</b>                               |
| <b>Minnesota</b>     | <b>\$2,392,418</b> | <b>\$26,671</b>    | <b>\$100,189</b>  | <b>\$6,834,888</b>                               |

## County Survey Responses

### Finances: Balance Sheet

| County            | Total Revenues | Total Expenditures | Balance     |
|-------------------|----------------|--------------------|-------------|
| Aitkin            | \$394,839      | \$268,027          | \$126,812   |
| Anoka             | \$2,813,116    | \$2,813,116        | \$0         |
| Becker            | \$501,752      | \$501,752          | \$0         |
| Beltrami          | \$488,192      | \$488,192          | \$0         |
| Benton            | \$272,423      | \$272,423          | \$0         |
| Big Stone         | \$168,036      | \$167,756          | \$281       |
| Blue Earth        | \$343,017      | \$343,044          | (\$27)      |
| Brown             | \$401,381      | \$399,382          | \$1,999     |
| Carlton           | \$238,085      | \$238,085          | \$0         |
| Carver            | \$867,052      | \$867,052          | \$0         |
| Cass              | \$766,938      | \$766,938          | \$0         |
| Chippewa          | \$157,514      | \$157,514          | \$0         |
| Chisago           | \$293,405      | \$257,332          | \$36,074    |
| Clay              | \$737,670      | \$548,006          | \$189,664   |
| Clearwater        | \$106,967      | \$106,967          | \$0         |
| Cook              | \$288,117      | \$288,117          | \$0         |
| Cottonwood        | \$335,496      | \$211,825          | \$123,671   |
| Crow Wing         | \$660,370      | \$660,370          | \$0         |
| Dakota            | \$2,027,455    | \$2,027,455        | \$0         |
| Dodge             | \$415,488      | \$387,542          | \$27,946    |
| Faribault         | \$82,187       | \$103,646          | (\$21,459)  |
| Fillmore          | \$92,487       | \$67,586           | \$24,901    |
| Freeborn          | \$401,475      | \$414,641          | (\$13,166)  |
| Goodhue           | \$509,431      | \$441,904          | \$67,526    |
| Grant             | \$229,141      | \$220,877          | \$8,264     |
| Hennepin          | \$11,178,296   | \$11,178,296       | \$0         |
| Houston           | \$321,843      | \$321,843          | \$0         |
| Hubbard           | \$594,483      | \$594,483          | \$0         |
| Isanti            | \$192,112      | \$90,383           | \$101,730   |
| Itasca            | \$433,845      | \$433,845          | (\$0)       |
| Jackson           | \$201,128      | \$102,398          | \$98,729    |
| Kanabec           | \$163,402      | \$75,484           | \$87,918    |
| Kandiyohi         | \$898,749      | \$898,749          | \$0         |
| Kittson           | \$162,968      | \$162,968          | \$0         |
| Koochiching       | \$227,526      | \$227,526          | \$0         |
| Lac qui Parle     | \$175,705      | \$107,386          | \$68,318    |
| Lake              | \$133,082      | \$275,385          | (\$142,303) |
| Lake of The Woods | \$181,179      | \$181,179          | \$0         |
| Le Sueur          | \$208,204      | \$208,204          | (\$0)       |
| Lincoln           | \$171,983      | \$117,319          | \$54,664    |
| Lyon              | \$521,421      | \$521,421          | \$0         |
| Mahnomen          | \$100,282      | \$59,910           | \$40,372    |
| Marshall          | \$119,676      | \$119,676          | \$0         |
| Martin            | \$246,847      | \$246,847          | \$0         |
| McLeod            | \$1,271,377    | \$1,271,377        | (\$0)       |
| Meeker            | \$99,776       | \$70,786           | \$28,990    |
| Mille Lacs        | \$154,384      | \$158,023          | (\$3,639)   |
| Morrison          | \$771,740      | \$771,740          | \$0         |
| Mower             | \$517,404      | \$517,404          | \$0         |

## County Survey Responses

### Finances: Balance Sheet

| County              | Total Revenues | Total Expenditures | Balance     |
|---------------------|----------------|--------------------|-------------|
| Murray              | \$108,350      | \$74,502           | \$33,849    |
| Nicollet            | \$336,794      | \$336,794          | \$0         |
| Nobles              | \$497,745      | \$376,246          | \$121,499   |
| Norman              | \$85,229       | \$85,229           | \$0         |
| Olmsted             | \$1,616,980    | \$1,762,519        | (\$145,539) |
| Otter Tail          | \$1,335,965    | \$1,320,765        | \$15,200    |
| Pennington          | \$74,070       | \$74,070           | \$0         |
| Pine                | \$157,000      | \$178,306          | (\$21,306)  |
| Pipestone           | \$158,955      | \$158,955          | \$0         |
| Polk                | \$449,870      | \$342,209          | \$107,661   |
| Pope/Douglas        | \$407,491      | \$424,769          | (\$17,278)  |
| Ramsey              | \$6,026,653    | \$5,448,985        | \$577,668   |
| Red Lake            | \$70,512       | \$70,512           | (\$0)       |
| Redwood             | \$424,105      | \$436,447          | (\$12,342)  |
| Renville            | \$355,456      | \$244,586          | \$110,870   |
| Rice                | \$1,196,794    | \$1,219,125        | (\$22,331)  |
| Rock                | \$111,174      | \$117,692          | (\$6,518)   |
| Roseau              | \$81,160       | \$146,016          | (\$64,856)  |
| Scott               | \$903,719      | \$385,249          | \$518,470   |
| Sherburne           | \$339,152      | \$209,321          | \$129,831   |
| Sibley              | \$215,895      | \$215,895          | (\$0)       |
| St. Louis - partial | \$1,146,371    | \$1,146,371        | \$0         |
| Stearns             | \$630,671      | \$551,428          | \$79,243    |
| Steele              | \$359,025      | \$359,025          | \$0         |
| Stevens             | \$98,141       | \$85,030           | \$13,111    |
| Swift               | \$244,630      | \$257,211          | (\$12,581)  |
| Todd                | \$330,981      | \$330,981          | \$0         |
| Traverse            | \$61,349       | \$90,413           | (\$29,064)  |
| Wabasha             | \$91,843       | \$113,490          | (\$21,647)  |
| Wadena              | \$115,406      | \$115,406          | \$0         |
| Waseca              | \$260,438      | \$260,438          | \$0         |
| Washington          | \$1,344,167    | \$1,344,167        | \$0         |
| Watonwan            | \$530,208      | \$176,516          | \$353,691   |
| Wilkin              | \$254,921      | \$254,921          | (\$0)       |
| Winona              | \$845,786      | \$811,328          | \$34,458    |
| WLSSD               | \$2,431,501    | \$2,431,501        | \$0         |
| Wright              | \$1,106,582    | \$490,928          | \$615,654   |
| Yellow Medicine     | \$193,765      | \$101,351          | \$92,413    |
| <hr/>               |                |                    |             |
| Metro Area          | \$24,595,891   | \$23,888,393       | \$707,499   |
| Greater Minn.       | \$33,042,407   | \$30,392,485       | \$2,649,922 |
| Minnesota           | \$57,638,298   | \$54,280,877       | \$3,357,421 |

## County Survey Responses

### Paper collected for recycling (tons)

| County               | Computer<br>paper | Corrugated | Magazine<br>/catalog | Mixed<br>paper | Newsprint | Office<br>paper | Other<br>paper | Phone<br>book | Total<br>Paper |
|----------------------|-------------------|------------|----------------------|----------------|-----------|-----------------|----------------|---------------|----------------|
| Aitkin               | 0                 | 582        | 0                    | 362            | 0         | 0               | 0              | 0             | 944            |
| Anoka                | 27                | 40,477     | 481                  | 16,629         | 14,446    | 390             | 12,058         | 35            | 84,542         |
| Becker               | 1,179             | 7,781      | 133                  | 954            | 1,226     | 299             | 0              | 10            | 11,581         |
| Beltrami             | 0                 | 2,801      | 70                   | 1,113          | 92        | 67              | 0              | 0             | 4,143          |
| Benton               | 0                 | 1,728      | 11,461               | 606            | 1,110     | 130             | 412            | 6             | 15,454         |
| Big Stone            | 0                 | 161        | 0                    | 183            | 0         | 0               | 0              | 0             | 344            |
| Blue Earth           | 0                 | 17,817     | 1,962                | 6,991          | 5,302     | 440             | 0              | 92            | 32,604         |
| Brown                | 0                 | 3,519      | 0                    | 3,501          | 1,116     | 8               | 1,702          | 0             | 9,846          |
| Carlton              | 0                 | 1,964      | 145                  | 1,048          | 429       | 0               | 3              | 0             | 3,589          |
| Carver               | 0                 | 7,942      | 81                   | 17,130         | 1,135     | 197             | 0              | 2             | 26,486         |
| Cass                 | 0                 | 2,513      | 54                   | 0              | 2,746     | 47              | 0              | 0             | 5,361          |
| Chippewa             | 0                 | 1,197      | 15                   | 14             | 498       | 4               | 0              | 0             | 1,727          |
| Chisago              | 0                 | 2,389      | 0                    | 2,384          | 0         | 237             | 0              | 25            | 5,035          |
| Clay                 | 0                 | 2,397      | 135                  | 271            | 1,290     | 279             | 0              | 26            | 4,398          |
| Clearwater           | 0                 | 208        | 0                    | 64             | 0         | 0               | 0              | 2             | 274            |
| Cook                 | 0                 | 483        | 108                  | 0              | 128       | 35              | 0              | 0             | 754            |
| Cottonwood           | 0                 | 1,275      | 15                   | 0              | 180       | 35              | 0              | 0             | 1,504          |
| Crow Wing            | 0                 | 5,454      | 5,795                | 177            | 1,308     | 3,206           | 0              | 28            | 15,968         |
| Dakota               | 0                 | 15,548     | 694                  | 29,176         | 21,916    | 874             | 0              | 355           | 68,564         |
| Dodge                | 0                 | 809        | 46                   | 833            | 6         | 0               | 8              | 0             | 1,702          |
| Faribault            | 0                 | 2,420      | 0                    | 1,815          | 0         | 0               | 0              | 0             | 4,235          |
| Fillmore             | 0                 | 226        | 87                   | 81             | 268       | 47              | 0              | 0             | 709            |
| Freeborn             | 0                 | 6,917      | 1,506                | 0              | 2         | 0               | 71             | 0             | 8,495          |
| Goodhue              | 0                 | 4,624      | 126                  | 2,854          | 382       | 1,043           | 0              | 0             | 9,029          |
| Grant                | 0                 | 160        | 18                   | 0              | 122       | 20              | 0              | 0             | 320            |
| Hennepin             | 0                 | 34,635     | 4,641                | 33,448         | 53,233    | 9,495           | 123            | 183           | 135,758        |
| Houston              | 0                 | 294        | 0                    | 233            | 162       | 0               | 0              | 0             | 690            |
| Hubbard              | 0                 | 1,889      | 0                    | 0              | 569       | 107             | 0              | 0             | 2,565          |
| Isanti               | 0                 | 1,942      | 0                    | 0              | 526       | 0               | 0              | 9             | 2,477          |
| Itasca               | 20                | 2,858      | 60                   | 2,689          | 1,260     | 207             | 0              | 0             | 7,094          |
| Jackson              | 0                 | 1,072      | 0                    | 0              | 316       | 130             | 0              | 1             | 1,519          |
| Kanabec              | 0                 | 496        | 0                    | 0              | 100       | 0               | 0              | 0             | 597            |
| Kandiyohi            | 0                 | 4,206      | 317                  | 295            | 826       | 145             | 176            | 15            | 5,981          |
| Kittson              | 0                 | 113        | 7                    | 0              | 118       | 5               | 0              | 1             | 243            |
| Koochiching          | 0                 | 883        | 24                   | 1,113          | 85        | 35              | 0              | 0             | 2,140          |
| Lac qui Parle        | 0                 | 382        | 0                    | 0              | 178       | 21              | 0              | 0             | 581            |
| Lake                 | 0                 | 454        | 108                  | 63             | 270       | 67              | 0              | 0             | 962            |
| Lake of The<br>Woods | 0                 | 84         | 0                    | 0              | 0         | 0               | 0              | 0             | 84             |
| Le Sueur             | 0                 | 1,098      | 0                    | 659            | 131       | 34              | 0              | 0             | 1,922          |
| Lincoln              | 0                 | 157        | 0                    | 0              | 254       | 0               | 0              | 0             | 411            |
| Lyon                 | 0                 | 3,322      | 0                    | 777            | 60        | 0               | 0              | 0             | 4,158          |
| Mahnomen             | 0                 | 104        | 7                    | 0              | 52        | 0               | 0              | 0             | 163            |
| Marshall             | 0                 | 81         | 1                    | 33             | 144       | 5               | 0              | 1             | 265            |
| Martin               | 0                 | 6,167      | 0                    | 3,500          | 0         | 0               | 0              | 0             | 9,667          |
| McLeod               | 0                 | 1,058      | 0                    | 0              | 578       | 0               | 195            | 0             | 1,831          |
| Meeker               | 0                 | 1,013      | 14                   | 187            | 215       | 68              | 0              | 0             | 1,496          |
| Mille Lacs           | 0                 | 841        | 0                    | 420            | 0         | 0               | 0              | 0             | 1,261          |

## County Survey Responses

### Paper collected for recycling (tons)

| County                 | Computer<br>paper | Corrugated | Magazine<br>/catalog | Mixed<br>paper | Newsprint | Office<br>paper | Other<br>paper | Phone<br>book | Total<br>Paper |
|------------------------|-------------------|------------|----------------------|----------------|-----------|-----------------|----------------|---------------|----------------|
| Morrison               | 0                 | 2,109      | 59                   | 0              | 193       | 1,583           | 21             | 0             | 3,965          |
| Mower                  | 250               | 12,774     | 112                  | 0              | 1,046     | 70              | 0              | 6             | 14,258         |
| Murray                 | 0                 | 544        | 13                   | 44             | 473       | 126             | 0              | 0             | 1,200          |
| Nicollet               | 0                 | 1,518      | 0                    | 7,555          | 52        | 671             | 0              | 0             | 9,795          |
| Nobles                 | 0                 | 3,848      | 0                    | 0              | 389       | 955             | 0              | 0             | 5,192          |
| Norman                 | 0                 | 72         | 0                    | 0              | 82        | 0               | 0              | 2             | 156            |
| Olmsted                | 0                 | 14,929     | 203                  | 1,689          | 1,138     | 2,062           | 11,365         | 60            | 31,446         |
| Otter Tail             | 0                 | 3,966      | 102                  | 0              | 994       | 139             | 0              | 0             | 5,201          |
| Pennington             | 0                 | 1,050      | 41                   | 0              | 109       | 66              | 0              | 0             | 1,267          |
| Pine                   | 0                 | 926        | 1                    | 1,409          | 0         | 0               | 0              | 0             | 2,336          |
| Pipestone              | 54                | 826        | 0                    | 0              | 314       | 0               | 0              | 0             | 1,194          |
| Polk                   | 0                 | 2,306      | 2                    | 0              | 500       | 45              | 0              | 7             | 2,858          |
| Pope/Douglas           | 0                 | 12,963     | 0                    | 29             | 1,720     | 0               | 0              | 0             | 14,712         |
| Ramsey                 | 0                 | 5,949      | 1,618                | 22,283         | 22,229    | 150             | 154            | 593           | 52,977         |
| Red Lake               | 0                 | 5          | 2                    | 0              | 84        | 3               | 0              | 0             | 94             |
| Redwood                | 98                | 2,228      | 186                  | 217            | 368       | 236             | 0              | 15            | 3,348          |
| Renville               | 0                 | 353        | 9                    | 157            | 443       | 9               | 0              | 4             | 975            |
| Rice                   | 0                 | 7,619      | 0                    | 0              | 2,427     | 0               | 0              | 27            | 10,073         |
| Rock                   | 0                 | 587        | 0                    | 0              | 229       | 34              | 0              | 0             | 849            |
| Roseau                 | 0                 | 2,368      | 5                    | 0              | 172       | 93              | 0              | 0             | 2,638          |
| Scott                  | 0                 | 19,010     | 588                  | 9,792          | 2,599     | 749             | 158            | 2             | 32,898         |
| Sherburne              | 0                 | 2,590      | 512                  | 1,248          | 2,574     | 844             | 52             | 21            | 7,841          |
| Sibley                 | 0                 | 529        | 0                    | 245            | 97        | 8               | 0              | 0             | 879            |
| St. Louis -<br>partial | 0                 | 5,274      | 0                    | 4,026          | 231       | 42              | 0              | 0             | 9,573          |
| Stearns                | 0                 | 5,919      | 2,098                | 2,949          | 10,344    | 427             | 223            | 72            | 22,031         |
| Steele                 | 0                 | 3,925      | 20                   | 1,624          | 0         | 2               | 1,792          | 0             | 7,364          |
| Stevens                | 0                 | 356        | 14                   | 20             | 162       | 10              | 0              | 5             | 567            |
| Swift                  | 30                | 641        | 63                   | 0              | 460       | 107             | 0              | 3             | 1,304          |
| Todd                   | 0                 | 1,627      | 24                   | 15,260         | 180       | 0               | 0              | 0             | 17,091         |
| Traverse               | 0                 | 126        | 23                   | 0              | 90        | 18              | 0              | 10            | 267            |
| Wabasha                | 0                 | 2,932      | 58                   | 0              | 711       | 12              | 0              | 0             | 3,713          |
| Wadena                 | 0                 | 205        | 0                    | 17             | 0         | 0               | 0              | 1             | 223            |
| Waseca                 | 0                 | 2,751      | 109                  | 1,471          | 530       | 550             | 31,421         | 13            | 36,845         |
| Washington             | 10                | 16,086     | 488                  | 14,713         | 19,391    | 12,887          | 0              | 98            | 63,673         |
| Watonwan               | 0                 | 1,305      | 0                    | 0              | 1,024     | 1               | 0              | 0             | 2,331          |
| Wilkin                 | 0                 | 328        | 22                   | 0              | 239       | 13              | 0              | 0             | 602            |
| Winona                 | 0                 | 7,054      | 0                    | 2,856          | 1,304     | 0               | 0              | 0             | 11,214         |
| WLSSD                  | 0                 | 14,193     | 166                  | 2,354          | 7,660     | 1,413           | 2,243          | 1             | 28,030         |
| Wright                 | 3                 | 8,401      | 24                   | 15             | 4,131     | 5               | 0              | 0             | 12,580         |
| Yellow<br>Medicine     | 0                 | 514        | 27                   | 0              | 244       | 18              | 0              | 0             | 804            |
| Metro Area             | 37                | 123,228    | 8,514                | 134,627        | 134,924   | 24,837          | 12,387         | 1,287         | 439,841        |
| Greater MN             | 1,634             | 242,018    | 26,184               | 84,949         | 62,787    | 16,191          | 49,790         | 443           | 483,996        |
| Minnesota              | 1,671             | 365,245    | 34,698               | 219,576        | 197,712   | 41,027          | 62,177         | 1,730         | 923,837        |



## County Survey Responses

### Metal collected for recycling (tons)

| County            | Aluminum | Co-mingled alum/steel/tin | Other ferrous & non-ferrous | Steel/tin cans | Total Metal |
|-------------------|----------|---------------------------|-----------------------------|----------------|-------------|
| Aitkin            | 75       | 91                        | 963                         | 36             | 1,164       |
| Anoka             | 315      | 646                       | 30,474                      | 2,510          | 33,946      |
| Becker            | 47       | 0                         | 0                           | 81             | 128         |
| Beltrami          | 84       | 1,321                     | 0                           | 0              | 1,405       |
| Benton            | 293      | 971                       | 11,263                      | 67             | 12,594      |
| Big Stone         | 11       | 77                        | 275                         | 0              | 363         |
| Blue Earth        | 4,154    | 6,001                     | 5,673                       | 1,194          | 17,022      |
| Brown             | 267      | 214                       | 1,972                       | 0              | 2,453       |
| Carlton           | 184      | 0                         | 7                           | 100            | 291         |
| Carver            | 29       | 227                       | 4,314                       | 37             | 4,608       |
| Cass              | 70       | 0                         | 350                         | 79             | 500         |
| Chippewa          | 11       | 16                        | 0                           | 58             | 85          |
| Chisago           | 307      | 0                         | 610                         | 148            | 1,065       |
| Clay              | 124      | 0                         | 71                          | 96             | 291         |
| Clearwater        | 31       | 13                        | 391                         | 0              | 435         |
| Cook              | 19       | 0                         | 401                         | 33             | 453         |
| Cottonwood        | 12       | 0                         | 328                         | 40             | 379         |
| Crow Wing         | 150      | 0                         | 7,550                       | 297            | 7,997       |
| Dakota            | 2,544    | 8,685                     | 8,848                       | 212            | 20,289      |
| Dodge             | 41       | 0                         | 1,645                       | 72             | 1,758       |
| Faribault         | 150      | 400                       | 405                         | 0              | 955         |
| Fillmore          | 62       | 0                         | 0                           | 165            | 226         |
| Freeborn          | 381      | 4,747                     | 0                           | 0              | 5,129       |
| Goodhue           | 419      | 250                       | 117                         | 307            | 1,093       |
| Grant             | 13       | 0                         | 188                         | 23             | 224         |
| Hennepin          | 4,600    | 1,963                     | 50,357                      | 1,588          | 58,507      |
| Houston           | 152      | 0                         | 541                         | 67             | 760         |
| Hubbard           | 398      | 0                         | 3,096                       | 74             | 3,568       |
| Isanti            | 561      | 69                        | 78                          | 999            | 1,707       |
| Itasca            | 42       | 90                        | 1,505                       | 139            | 1,776       |
| Jackson           | 61       | 0                         | 116                         | 68             | 246         |
| Kanabec           | 5        | 90                        | 0                           | 38             | 133         |
| Kandiyohi         | 189      | 85                        | 0                           | 0              | 274         |
| Kittson           | 10       | 59                        | 62                          | 0              | 131         |
| Koochiching       | 90       | 0                         | 877                         | 16             | 983         |
| Lac qui Parle     | 33       | 7                         | 51                          | 146            | 237         |
| Lake              | 20       | 0                         | 1,793                       | 39             | 1,852       |
| Lake of The Woods | 8        | 0                         | 217                         | 0              | 225         |
| Le Sueur          | 111      | 25                        | 3,793                       | 288            | 4,216       |
| Lincoln           | 12       | 29                        | 0                           | 0              | 41          |
| Lyon              | 4        | 3                         | 40                          | 62             | 110         |
| Mahnomen          | 14       | 0                         | 49                          | 8              | 70          |
| Marshall          | 2        | 53                        | 185                         | 0              | 240         |
| Martin            | 1,200    | 2,358                     | 3,300                       | 0              | 6,858       |
| McLeod            | 64       | 344                       | 0                           | 70             | 478         |
| Meeker            | 64       | 54                        | 141                         | 176            | 436         |
| Mille Lacs        | 0        | 106                       | 0                           | 0              | 106         |
| Morrison          | 130      | 94                        | 28,620                      | 40             | 28,883      |

## County Survey Responses

### Metal collected for recycling (tons)

| County               | Aluminum      | Co-mingled<br>alum/steel/tin | Other ferrous<br>& non-ferrous | Steel/tin<br>cans | Total<br>Metal |
|----------------------|---------------|------------------------------|--------------------------------|-------------------|----------------|
| Mower                | 261           | 0                            | 100                            | 85                | 446            |
| Murray               | 54            | 30                           | 75                             | 56                | 215            |
| Nicollet             | 71            | 2                            | 2,223                          | 51                | 2,348          |
| Nobles               | 114           | 164                          | 0                              | 0                 | 278            |
| Norman               | 27            | 0                            | 580                            | 97                | 704            |
| Olmsted              | 273           | 9,402                        | 8,015                          | 457               | 18,146         |
| Otter Tail           | 287           | 715                          | 3,994                          | 149               | 5,145          |
| Pennington           | 0             | 767                          | 0                              | 0                 | 767            |
| Pine                 | 0             | 797                          | 1,581                          | 0                 | 2,378          |
| Pipestone            | 2             | 0                            | 25                             | 40                | 67             |
| Polk                 | 129           | 13                           | 2,088                          | 52                | 2,282          |
| Pope/Douglas         | 565           | 0                            | 322                            | 939               | 1,826          |
| Ramsey               | 522           | 560                          | 56,413                         | 794               | 58,290         |
| Red Lake             | 0             | 29                           | 200                            | 0                 | 229            |
| Redwood              | 608           | 0                            | 3,022                          | 59                | 3,689          |
| Renville             | 19            | 0                            | 694                            | 32                | 745            |
| Rice                 | 390           | 20                           | 1,716                          | 571               | 2,697          |
| Rock                 | 35            | 0                            | 2,131                          | 81                | 2,247          |
| Roseau               | 54            | 0                            | 457                            | 68                | 579            |
| Scott                | 778           | 4,725                        | 19,696                         | 232               | 25,431         |
| Sherburne            | 529           | 533                          | 12,969                         | 593               | 14,625         |
| Sibley               | 16            | 0                            | 1,299                          | 23                | 1,337          |
| St. Louis - partial  | 386           | 2,906                        | 40,694                         | 948               | 44,934         |
| Stearns              | 945           | 1,498                        | 34,265                         | 506               | 37,214         |
| Steele               | 80            | 0                            | 130                            | 388               | 598            |
| Stevens              | 71            | 0                            | 380                            | 133               | 584            |
| Swift                | 123           | 0                            | 63                             | 77                | 263            |
| Todd                 | 12            | 0                            | 100                            | 68                | 180            |
| Traverse             | 40            | 26                           | 10                             | 0                 | 76             |
| Wabasha              | 42            | 5                            | 91                             | 379               | 517            |
| Wadena               | 7             | 88                           | 6,491                          | 0                 | 6,586          |
| Waseca               | 182           | 0                            | 1,067                          | 36                | 1,285          |
| Washington           | 1,792         | 349                          | 5,189                          | 926               | 8,255          |
| Watonwan             | 15            | 0                            | 0                              | 38                | 53             |
| Wilkin               | 68            | 0                            | 75                             | 7                 | 150            |
| Winona               | 773           | 590                          | 263                            | 3,230             | 4,856          |
| WLSSD                | 452           | 577                          | 11,373                         | 72                | 12,474         |
| Wright               | 97            | 4                            | 97                             | 655               | 853            |
| Yellow Medicine      | 1             | 0                            | 7                              | 52                | 60             |
| <b>Metro Area</b>    | <b>10,332</b> | <b>12,963</b>                | <b>168,565</b>                 | <b>6,660</b>      | <b>198,519</b> |
| <b>Greater Minn.</b> | <b>17,054</b> | <b>39,928</b>                | <b>219,997</b>                 | <b>14,602</b>     | <b>291,581</b> |
| <b>Minnesota</b>     | <b>27,386</b> | <b>52,890</b>                | <b>388,562</b>                 | <b>21,262</b>     | <b>490,100</b> |

## County Survey Responses

### Glass collected for recycling (tons)

| County            | Food & beverage | Other glass | Total Glass |
|-------------------|-----------------|-------------|-------------|
| Aitkin            | 190             | 0           | 190         |
| Anoka             | 4,846           | 671         | 5,517       |
| Becker            | 364             | 0           | 364         |
| Beltrami          | 0               | 0           | 0           |
| Benton            | 548             | 258         | 806         |
| Big Stone         | 46              | 0           | 46          |
| Blue Earth        | 887             | 0           | 887         |
| Brown             | 377             | 0           | 377         |
| Carlton           | 625             | 0           | 625         |
| Carver            | 997             | 0           | 997         |
| Cass              | 173             | 0           | 173         |
| Chippewa          | 170             | 0           | 170         |
| Chisago           | 849             | 0           | 849         |
| Clay              | 253             | 0           | 253         |
| Clearwater        | 0               | 0           | 0           |
| Cook              | 172             | 0           | 172         |
| Cottonwood        | 100             | 0           | 100         |
| Crow Wing         | 843             | 0           | 843         |
| Dakota            | 7,344           | 0           | 7,344       |
| Dodge             | 267             | 367         | 635         |
| Faribault         | 85              | 67          | 152         |
| Fillmore          | 659             | 0           | 659         |
| Freeborn          | 1,571           | 0           | 1,571       |
| Goodhue           | 1,500           | 0           | 1,500       |
| Grant             | 120             | 0           | 120         |
| Hennepin          | 20,932          | 172         | 21,104      |
| Houston           | 95              | 0           | 95          |
| Hubbard           | 384             | 0           | 384         |
| Isanti            | 139             | 0           | 139         |
| Itasca            | 940             | 0           | 940         |
| Jackson           | 139             | 0           | 139         |
| Kanabec           | 0               | 67          | 67          |
| Kandiyohi         | 284             | 0           | 284         |
| Kittson           | 158             | 0           | 158         |
| Koochiching       | 73              | 0           | 73          |
| Lac qui Parle     | 48              | 58          | 105         |
| Lake              | 646             | 0           | 646         |
| Lake of The Woods | 500             | 0           | 500         |
| Le Sueur          | 0               | 440         | 440         |
| Lincoln           | 58              | 0           | 58          |
| Lyon              | 224             | 0           | 224         |
| Mahnomen          | 31              | 0           | 31          |
| Marshall          | 149             | 0           | 149         |
| Martin            | 913             | 372         | 1,285       |
| McLeod            | 328             | 0           | 328         |
| Meeker            | 180             | 0           | 180         |
| Mille Lacs        | 0               | 168         | 168         |
| Morrison          | 390             | 0           | 390         |
| Mower             | 325             | 0           | 325         |
| Murray            | 164             | 0           | 164         |

## County Survey Responses

### Glass collected for recycling (tons)

| County              | Food & beverage | Other glass | Total Glass |
|---------------------|-----------------|-------------|-------------|
| Nicollet            | 0               | 207         | 207         |
| Nobles              | 219             | 0           | 219         |
| Norman              | 65              | 0           | 65          |
| Olmsted             | 153             | 1,118       | 1,271       |
| Otter Tail          | 623             | 2           | 625         |
| Pennington          | 0               | 0           | 0           |
| Pine                | 465             | 0           | 465         |
| Pipestone           | 129             | 0           | 129         |
| Polk                | 431             | 0           | 431         |
| Pope/Douglas        | 3,633           | 0           | 3,633       |
| Ramsey              | 7,840           | 0           | 7,840       |
| Red Lake            | 142             | 0           | 142         |
| Redwood             | 319             | 0           | 319         |
| Renville            | 178             | 0           | 178         |
| Rice                | 751             | 3,810       | 4,561       |
| Rock                | 0               | 3           | 3           |
| Roseau              | 189             | 3,651       | 3,840       |
| Scott               | 973             | 0           | 973         |
| Sherburne           | 1,929           | 113         | 2,042       |
| Sibley              | 0               | 128         | 128         |
| St. Louis - partial | 1,168           | 0           | 1,168       |
| Stearns             | 946             | 18          | 964         |
| Steele              | 680             | 26,345      | 27,025      |
| Stevens             | 119             | 0           | 119         |
| Swift               | 242             | 0           | 242         |
| Todd                | 185             | 0           | 185         |
| Traverse            | 30              | 0           | 30          |
| Wabasha             | 320             | 0           | 320         |
| Wadena              | 177             | 0           | 177         |
| Waseca              | 293             | 0           | 293         |
| Washington          | 3,325           | 0           | 3,325       |
| Watonwan            | 191             | 0           | 191         |
| Wilkin              | 37              | 0           | 37          |
| Winona              | 573             | 0           | 573         |
| WLSSD               | 3,658           | 0           | 3,658       |
| Wright              | 1,189           | 0           | 1,189       |
| Yellow Medicine     | 172             | 0           | 172         |
| <hr/>               |                 |             |             |
| Metro Area          | 47,214          | 956         | 48,170      |
| Greater Minn.       | 34,214          | 37,081      | 71,294      |
| Minnesota           | 81,427          | 38,037      | 119,464     |

## County Survey Responses

### Plastic collected for recycling (tons)

| County            | Film plastic | HDPE | Mixed plastic | Other plastic | PET | Polystyrene | Total Plastics |
|-------------------|--------------|------|---------------|---------------|-----|-------------|----------------|
| Aitkin            | 0            | 0    | 65            | 0             | 0   | 0           | 65             |
| Anoka             | 59           | 128  | 194           | 1,474         | 341 | 0           | 2,196          |
| Becker            | 0            | 0    | 83            | 0             | 0   | 0           | 83             |
| Beltrami          | 0            | 0    | 0             | 0             | 0   | 0           | 0              |
| Benton            | 12           | 148  | 35            | 127           | 20  | 13          | 354            |
| Big Stone         | 0            | 1    | 40            | 0             | 0   | 0           | 40             |
| Blue Earth        | 318          | 82   | 2,209         | 0             | 542 | 62          | 3,212          |
| Brown             | 11           | 0    | 594           | 6             | 0   | 0           | 611            |
| Carlton           | 0            | 0    | 149           | 0             | 0   | 0           | 149            |
| Carver            | 0            | 0    | 858           | 0             | 0   | 0           | 858            |
| Cass              | 0            | 0    | 71            | 0             | 0   | 0           | 71             |
| Chippewa          | 10           | 2    | 52            | 0             | 0   | 21          | 84             |
| Chisago           | 3            | 0    | 259           | 0             | 0   | 0           | 262            |
| Clay              | 0            | 0    | 155           | 0             | 0   | 0           | 155            |
| Clearwater        | 0            | 0    | 0             | 0             | 0   | 0           | 0              |
| Cook              | 0            | 0    | 44            | 0             | 0   | 0           | 44             |
| Cottonwood        | 0            | 5    | 39            | 0             | 0   | 0           | 43             |
| Crow Wing         | 0            | 0    | 388           | 0             | 0   | 0           | 388            |
| Dakota            | 35           | 1    | 3,967         | 0             | 0   | 0           | 4,003          |
| Dodge             | 0            | 0    | 244           | 0             | 0   | 0           | 244            |
| Faribault         | 0            | 3    | 200           | 0             | 0   | 0           | 203            |
| Fillmore          | 0            | 82   | 0             | 0             | 52  | 0           | 134            |
| Freeborn          | 0            | 0    | 923           | 0             | 0   | 0           | 923            |
| Goodhue           | 0            | 159  | 0             | 0             | 115 | 0           | 275            |
| Grant             | 0            | 0    | 28            | 0             | 0   | 0           | 28             |
| Hennepin          | 0            | 111  | 13,667        | 0             | 105 | 0           | 13,883         |
| Houston           | 0            | 0    | 167           | 1             | 0   | 0           | 168            |
| Hubbard           | 0            | 0    | 78            | 0             | 0   | 0           | 78             |
| Isanti            | 0            | 0    | 820           | 0             | 0   | 0           | 820            |
| Itasca            | 0            | 30   | 104           | 0             | 42  | 0           | 176            |
| Jackson           | 0            | 0    | 65            | 0             | 0   | 0           | 65             |
| Kanabec           | 0            | 0    | 20            | 0             | 0   | 0           | 20             |
| Kandiyohi         | 0            | 66   | 0             | 0             | 64  | 0           | 130            |
| Kittson           | 0            | 1    | 18            | 0             | 7   | 0           | 26             |
| Koochiching       | 0            | 10   | 0             | 0             | 36  | 0           | 47             |
| Lac qui Parle     | 0            | 0    | 0             | 0             | 42  | 0           | 42             |
| Lake              | 0            | 0    | 61            | 0             | 0   | 0           | 61             |
| Lake of The Woods | 0            | 0    | 5             | 0             | 0   | 0           | 5              |
| Le Sueur          | 0            | 0    | 83            | 1             | 35  | 0           | 119            |
| Lincoln           | 0            | 0    | 54            | 0             | 0   | 0           | 54             |
| Lyon              | 88           | 0    | 29            | 0             | 0   | 0           | 117            |
| Mahnomen          | 0            | 0    | 5             | 0             | 0   | 0           | 5              |
| Marshall          | 0            | 2    | 25            | 0             | 1   | 0           | 28             |
| Martin            | 10           | 8    | 760           | 0             | 0   | 0           | 778            |
| McLeod            | 3,687        | 0    | 250           | 0             | 0   | 0           | 3,937          |
| Meeker            | 0            | 0    | 50            | 0             | 0   | 0           | 50             |
| Mille Lacs        | 0            | 0    | 108           | 0             | 0   | 0           | 108            |
| Morrison          | 0            | 0    | 122           | 56            | 0   | 0           | 178            |
| Mower             | 78           | 75   | 0             | 0             | 34  | 0           | 187            |

## County Survey Responses

### Plastic collected for recycling (tons)

| County              | Film plastic | HDPE  | Mixed plastic | Other plastic | PET   | Polystyrene | Total Plastics |
|---------------------|--------------|-------|---------------|---------------|-------|-------------|----------------|
| Murray              | 0            | 4     | 64            | 4             | 0     | 0           | 72             |
| Nicollet            | 0            | 85    | 60            | 109           | 83    | 0           | 337            |
| Nobles              | 0            | 177   | 0             | 0             | 151   | 0           | 328            |
| Norman              | 0            | 0     | 0             | 0             | 0     | 0           | 0              |
| Olmsted             | 0            | 0     | 611           | 103           | 0     | 0           | 715            |
| Otter Tail          | 0            | 228   | 0             | 57            | 0     | 0           | 285            |
| Pennington          | 0            | 0     | 22            | 0             | 0     | 0           | 22             |
| Pine                | 0            | 0     | 106           | 0             | 0     | 0           | 106            |
| Pipestone           | 0            | 0     | 437           | 0             | 0     | 0           | 437            |
| Polk                | 0            | 0     | 68            | 0             | 0     | 0           | 68             |
| Pope/Douglas        | 0            | 0     | 143           | 195           | 0     | 0           | 338            |
| Ramsey              | 89           | 323   | 818           | 13            | 453   | 0           | 1,696          |
| Red Lake            | 0            | 0     | 12            | 0             | 0     | 0           | 12             |
| Redwood             | 68           | 25    | 158           | 0             | 6     | 0           | 257            |
| Renville            | 0            | 0     | 38            | 0             | 0     | 0           | 38             |
| Rice                | 35           | 295   | 69            | 0             | 295   | 0           | 694            |
| Rock                | 0            | 34    | 0             | 0             | 39    | 0           | 73             |
| Roseau              | 405          | 0     | 79            | 107           | 0     | 0           | 591            |
| Scott               | 102          | 1     | 176           | 56            | 274   | 0           | 609            |
| Sherburne           | 32           | 85    | 381           | 8             | 24    | 11          | 541            |
| Sibley              | 0            | 0     | 20            | 0             | 0     | 0           | 20             |
| St. Louis - partial | 0            | 110   | 0             | 0             | 108   | 0           | 218            |
| Stearns             | 126          | 154   | 180           | 238           | 160   | 0           | 856            |
| Steele              | 0            | 0     | 142           | 58            | 0     | 0           | 200            |
| Stevens             | 0            | 21    | 0             | 0             | 22    | 0           | 43             |
| Swift               | 0            | 47    | 0             | 0             | 59    | 0           | 106            |
| Todd                | 0            | 0     | 17            | 0             | 24    | 0           | 41             |
| Traverse            | 0            | 0     | 15            | 0             | 0     | 0           | 15             |
| Wabasha             | 0            | 0     | 115           | 0             | 0     | 0           | 115            |
| Wadena              | 0            | 0     | 87            | 0             | 0     | 0           | 87             |
| Waseca              | 0            | 61    | 13            | 6             | 63    | 0           | 143            |
| Washington          | 147          | 4     | 962           | 0             | 40    | 0           | 1,153          |
| Watonwan            | 0            | 0     | 47            | 0             | 0     | 0           | 47             |
| Wilkin              | 0            | 0     | 8             | 0             | 0     | 0           | 8              |
| Winona              | 0            | 161   | 279           | 0             | 36    | 0           | 476            |
| WLSSD               | 59           | 0     | 1,127         | 0             | 0     | 0           | 1,186          |
| Wright              | 0            | 0     | 297           | 0             | 6     | 0           | 304            |
| Yellow Medicine     | 0            | 0     | 27            | 0             | 0     | 0           | 27             |
| Metro Area          | 363          | 651   | 20,848        | 1,495         | 964   | 11          | 24,331         |
| Greater Minn.       | 5,012        | 2,077 | 12,819        | 1,123         | 2,315 | 96          | 23,443         |
| Minnesota           | 5,375        | 2,728 | 33,667        | 2,618         | 3,279 | 107         | 47,774         |

## County Survey Responses

### Organics, textiles, other collected for recycling (tons)

| County            | Food waste | Carpet | Textiles | Pallets | Unspecified or Other | Total   |
|-------------------|------------|--------|----------|---------|----------------------|---------|
| Aitkin            | 0          | 0      | 0        | 0       | 12                   | 12      |
| Anoka             | 6,317      | 2      | 1,779    | 3,545   | 1,297                | 12,940  |
| Becker            | 0          | 0      | 0        | 0       | 0                    | 0       |
| Beltrami          | 0          | 0      | 0        | 0       | 0                    | 0       |
| Benton            | 27         | 0      | 0        | 0       | 18                   | 45      |
| Big Stone         | 0          | 0      | 0        | 0       | 0                    | 0       |
| Blue Earth        | 0          | 0      | 458      | 18,100  | 0                    | 18,558  |
| Brown             | 2,307      | 0      | 0        | 827     | 220                  | 3,354   |
| Carlton           | 0          | 0      | 0        | 0       | 0                    | 0       |
| Carver            | 8,875      | 0      | 9        | 664     | 1,038                | 10,585  |
| Cass              | 0          | 0      | 25       | 0       | 1,010                | 1,035   |
| Chippewa          | 0          | 0      | 0        | 0       | 152                  | 152     |
| Chisago           | 0          | 0      | 109      | 25      | 0                    | 134     |
| Clay              | 6,361      | 0      | 162      | 3       | 2                    | 6,528   |
| Clearwater        | 0          | 0      | 10       | 0       | 1                    | 11      |
| Cook              | 0          | 0      | 16       | 0       | 22                   | 38      |
| Cottonwood        | 0          | 0      | 0        | 1,400   | 0                    | 1,400   |
| Crow Wing         | 450        | 3      | 198      | 0       | 19,011               | 19,662  |
| Dakota            | 12,241     | 0      | 3,151    | 9,933   | 38,468               | 63,794  |
| Dodge             | 0          | 0      | 0        | 21      | 1                    | 22      |
| Faribault         | 0          | 0      | 0        | 0       | 0                    | 0       |
| Fillmore          | 0          | 0      | 10       | 0       | 182                  | 192     |
| Freeborn          | 0          | 0      | 2        | 80      | 0                    | 82      |
| Goodhue           | 300        | 0      | 24       | 6       | 0                    | 329     |
| Grant             | 0          | 0      | 0        | 0       | 97                   | 97      |
| Hennepin          | 50,364     | 13     | 10       | 8,697   | 288,808              | 347,892 |
| Houston           | 0          | 0      | 15       | 0       | 0                    | 15      |
| Hubbard           | 12         | 0      | 136      | 0       | 0                    | 148     |
| Isanti            | 125        | 0      | 0        | 0       | 763                  | 888     |
| Itasca            | 0          | 0      | 0        | 2,275   | 0                    | 2,275   |
| Jackson           | 0          | 0      | 139      | 35      | 325                  | 499     |
| Kanabec           | 0          | 0      | 0        | 1       | 0                    | 1       |
| Kandiyohi         | 0          | 0      | 0        | 0       | 0                    | 0       |
| Kittson           | 65         | 0      | 0        | 0       | 3                    | 69      |
| Koochiching       | 0          | 0      | 0        | 0       | 0                    | 0       |
| Lac qui Parle     | 0          | 0      | 0        | 0       | 0                    | 0       |
| Lake              | 0          | 0      | 0        | 0       | 0                    | 0       |
| Lake of The Woods | 76         | 0      | 0        | 0       | 0                    | 76      |
| Le Sueur          | 3,530      | 0      | 0        | 584     | 0                    | 4,114   |
| Lincoln           | 0          | 0      | 9        | 0       | 0                    | 9       |
| Lyon              | 0          | 0      | 139      | 0       | 3,600                | 3,739   |
| Mahnomen          | 0          | 0      | 0        | 0       | 0                    | 0       |
| Marshall          | 0          | 0      | 0        | 0       | 0                    | 0       |
| Martin            | 0          | 0      | 125      | 3,190   | 20                   | 3,335   |
| McLeod            | 0          | 0      | 0        | 440     | 2,794                | 3,234   |
| Meeker            | 15         | 0      | 0        | 619     | 215                  | 849     |
| Mille Lacs        | 0          | 0      | 0        | 0       | 1                    | 1       |
| Morrison          | 3          | 0      | 1        | 1,016   | 178                  | 1,198   |
| Mower             | 0          | 0      | 0        | 8,402   | 0                    | 8,402   |
| Murray            | 441        | 0      | 154      | 55      | 0                    | 650     |

## County Survey Responses

### Organics, textiles, other collected for recycling (tons)

| County               | Food waste     | Carpet     | Textiles      | Pallets       | Unspecified or Other | Total          |
|----------------------|----------------|------------|---------------|---------------|----------------------|----------------|
| Nicollet             | 18             | 0          | 0             | 545           | 2                    | 564            |
| Nobles               | 231            | 0          | 85            | 83            | 0                    | 399            |
| Norman               | 0              | 0          | 0             | 0             | 1                    | 1              |
| Olmsted              | 2,501          | 0          | 638           | 2,117         | 57                   | 5,312          |
| Otter Tail           | 15,492         | 0          | 208           | 262           | 676                  | 16,637         |
| Pennington           | 0              | 0          | 0             | 0             | 0                    | 0              |
| Pine                 | 100            | 0          | 0             | 0             | 0                    | 100            |
| Pipestone            | 0              | 0          | 134           | 1,500         | 54                   | 1,688          |
| Polk                 | 2,308          | 0          | 9             | 0             | 2,592                | 4,909          |
| Pope/Douglas         | 0              | 124        | 8             | 0             | 0                    | 132            |
| Ramsey               | 21,491         | 0          | 4,590         | 5,967         | 136,825              | 168,872        |
| Red Lake             | 0              | 0          | 0             | 0             | 1                    | 1              |
| Redwood              | 719            | 15         | 901           | 800           | 3,321                | 5,755          |
| Renville             | 890            | 0          | 45            | 0             | 5                    | 940            |
| Rice                 | 24,344         | 0          | 80            | 1,315         | 0                    | 25,739         |
| Rock                 | 0              | 0          | 35            | 862           | 0                    | 897            |
| Roseau               | 0              | 0          | 0             | 1,640         | 0                    | 1,640          |
| Scott                | 571            | 9          | 53            | 3,341         | 0                    | 3,974          |
| Sherburne            | 12             | 1          | 0             | 1,594         | 2,056                | 3,663          |
| Sibley               | 2,411          | 0          | 0             | 50            | 20                   | 2,481          |
| St. Louis - partial  | 0              | 0          | 0             | 0             | 0                    | 0              |
| Stearns              | 1,005          | 0          | 0             | 7,797         | 4,147                | 12,949         |
| Steele               | 0              | 0          | 9             | 7,083         | 6                    | 7,098          |
| Stevens              | 0              | 0          | 0             | 0             | 0                    | 0              |
| Swift                | 0              | 0          | 0             | 0             | 0                    | 0              |
| Todd                 | 0              | 0          | 0             | 0             | 0                    | 0              |
| Traverse             | 0              | 0          | 0             | 0             | 0                    | 0              |
| Wabasha              | 3,872          | 0          | 4             | 230           | 0                    | 4,106          |
| Wadena               | 0              | 0          | 0             | 0             | 0                    | 0              |
| Waseca               | 0              | 0          | 124           | 0             | 0                    | 124            |
| Washington           | 2,120          | 0          | 1             | 496           | 3,182                | 5,799          |
| Watsonwan            | 0              | 0          | 0             | 0             | 0                    | 0              |
| Wilkin               | 0              | 0          | 0             | 0             | 26                   | 26             |
| Winona               | 1,166          | 0          | 73            | 2,620         | 0                    | 3,859          |
| WLSSD                | 386            | 0          | 1,769         | 399           | 88                   | 2,641          |
| Wright               | 0              | 0          | 0             | 1             | 0                    | 1              |
| Yellow Medicine      | 0              | 0          | 0             | 0             | 201                  | 201            |
| <b>Metro Area</b>    | <b>101,421</b> | <b>16</b>  | <b>9,540</b>  | <b>30,895</b> | <b>471,673</b>       | <b>613,545</b> |
| <b>Greater Minn.</b> | <b>69,725</b>  | <b>151</b> | <b>5,906</b>  | <b>67,723</b> | <b>39,823</b>        | <b>183,328</b> |
| <b>Minnesota</b>     | <b>171,146</b> | <b>167</b> | <b>15,446</b> | <b>98,618</b> | <b>511,496</b>       | <b>796,873</b> |



## County Survey Responses

### Problem materials (banned) collected for recycling (tons)

| County            | Antifreeze | Electronics | Fluorescent & HID lamps | HHW | Latex paint | Major appliances | Used oil | Used oil filters | Vehicle batteries | Waste tires | Total problem mats |
|-------------------|------------|-------------|-------------------------|-----|-------------|------------------|----------|------------------|-------------------|-------------|--------------------|
| Aitkin            | 0          | 6           | 4                       | 2   | 7           | 138              | 102      | 8                | 100               | 191         | 557                |
| Anoka             | 16         | 135         | 24                      | 3   | 93          | 1,958            | 261      | 153              | 2,003             | 653         | 5,299              |
| Becker            | 0          | 13          | 2                       | 17  | 10          | 334              | 25       | 15               | 196               | 84          | 695                |
| Beltrami          | 0          | 76          | 8                       | 0   | 0           | 256              | 34       | 20               | 262               | 154         | 810                |
| Benton            | 0          | 0           | 0                       | 0   | 8           | 231              | 31       | 18               | 237               | 77          | 602                |
| Big Stone         | 0          | 0           | 0                       | 0   | 0           | 34               | 29       | 5                | 34                | 20          | 122                |
| Blue Earth        | 6          | 79          | 18                      | 7   | 37          | 688              | 123      | 82               | 1,106             | 2,100       | 4,246              |
| Brown             | 0          | 14          | 2                       | 27  | 10          | 161              | 22       | 13               | 165               | 54          | 468                |
| Carlton           | 7          | 13          | 2                       | 1   | 1           | 205              | 27       | 25               | 209               | 68          | 558                |
| Carver            | 6          | 113         | 2                       | 277 | 60          | 511              | 102      | 40               | 523               | 170         | 1,805              |
| Cass              | 0          | 1           | 8                       | 12  | 0           | 264              | 23       | 13               | 177               | 556         | 1,055              |
| Chippewa          | 0          | 0           | 0                       | 0   | 0           | 77               | 10       | 6                | 78                | 377         | 548                |
| Chisago           | 4          | 66          | 6                       | 34  | 45          | 297              | 40       | 23               | 303               | 99          | 916                |
| Clay              | 18         | 26          | 14                      | 19  | 18          | 324              | 320      | 25               | 331               | 183         | 1,278              |
| Clearwater        | 0          | 0           | 1                       | 5   | 2           | 51               | 7        | 4                | 52                | 55          | 177                |
| Cook              | 0          | 0           | 0                       | 0   | 0           | 32               | 11       | 3                | 33                | 11          | 90                 |
| Cottonwood        | 0          | 4           | 3                       | 4   | 2           | 76               | 10       | 29               | 73                | 102         | 302                |
| Crow Wing         | 13         | 143         | 30                      | 2   | 14          | 361              | 48       | 45               | 388               | 120         | 1,164              |
| Dakota            | 102        | 874         | 140                     | 60  | 203         | 2,349            | 313      | 183              | 3,356             | 783         | 8,363              |
| Dodge             | 0          | 10          | 0                       | 0   | 0           | 119              | 16       | 9                | 121               | 40          | 315                |
| Faribault         | 1          | 0           | 4                       | 1   | 2           | 94               | 30       | 7                | 96                | 31          | 266                |
| Fillmore          | 0          | 3           | 3                       | 0   | 1           | 128              | 23       | 10               | 131               | 43          | 342                |
| Freeborn          | 4          | 10          | 0                       | 13  | 11          | 244              | 521      | 17               | 215               | 325         | 1,360              |
| Goodhue           | 0          | 0           | 0                       | 0   | 0           | 276              | 37       | 21               | 282               | 92          | 709                |
| Grant             | 0          | 5           | 1                       | 4   | 3           | 37               | 5        | 3                | 38                | 12          | 108                |
| Hennepin          | 32         | 1,612       | 33                      | 0   | 587         | 6,905            | 921      | 538              | 7,064             | 2,302       | 19,994             |
| Houston           | 0          | 40          | 3                       | 2   | 0           | 352              | 16       | 9                | 122               | 170         | 714                |
| Hubbard           | 0          | 45          | 15                      | 4   | 3           | 200              | 43       | 9                | 116               | 343         | 779                |
| Isanti            | 0          | 0           | 0                       | 0   | 0           | 226              | 30       | 18               | 231               | 75          | 581                |
| Itasca            | 2          | 0           | 3                       | 0   | 0           | 3,025            | 35       | 21               | 272               | 89          | 3,447              |
| Jackson           | 0          | 21          | 1                       | 2   | 2           | 67               | 9        | 5                | 70                | 24          | 201                |
| Kanabec           | 1          | 9           | 0                       | 7   | 0           | 97               | 57       | 8                | 100               | 163         | 441                |
| Kandiyohi         | 0          | 0           | 0                       | 0   | 0           | 249              | 33       | 19               | 255               | 83          | 639                |
| Kittson           | 0          | 2           | 1                       | 0   | 0           | 29               | 4        | 2                | 30                | 10          | 78                 |
| Koochiching       | 0          | 0           | 2                       | 2   | 0           | 84               | 11       | 7                | 86                | 28          | 220                |
| Lac qui Parle     | 0          | 0           | 0                       | 0   | 0           | 47               | 25       | 4                | 48                | 15          | 139                |
| Lake              | 8          | 0           | 0                       | 0   | 0           | 262              | 137      | 5                | 69                | 87          | 568                |
| Lake of The Woods | 0          | 0           | 1                       | 3   | 2           | 27               | 4        | 3                | 27                | 132         | 198                |
| Le Sueur          | 12         | 16          | 6                       | 8   | 7           | 312              | 54       | 106              | 171               | 59          | 749                |
| Lincoln           | 0          | 0           | 1                       | 2   | 0           | 36               | 21       | 3                | 39                | 29          | 131                |
| Lyon              | 0          | 0           | 3                       | 0   | 0           | 150              | 20       | 12               | 154               | 50          | 389                |
| Mahnomen          | 0          | 0           | 0                       | 2   | 0           | 31               | 4        | 2                | 31                | 10          | 80                 |
| Marshall          | 1          | 0           | 1                       | 2   | 1           | 60               | 8        | 5                | 61                | 20          | 159                |
| Martin            | 9          | 433         | 42                      | 38  | 8           | 275              | 276      | 18               | 196               | 42          | 1,337              |
| McLeod            | 1          | 7           | 9                       | 13  | 23          | 220              | 29       | 17               | 225               | 73          | 616                |
| Meeker            | 0          | 0           | 19                      | 41  | 0           | 140              | 19       | 11               | 144               | 47          | 421                |
| Mille Lacs        | 0          | 0           | 0                       | 0   | 0           | 154              | 20       | 12               | 157               | 51          | 395                |
| Morrison          | 9          | 42          | 7                       | 0   | 8           | 231              | 312      | 15               | 202               | 358         | 1,183              |

## County Survey Responses

### Problem materials (banned) collected for recycling (tons)

| County              | Antifreeze | Electronics  | Fluorescent & HID lamps | HHW          | Latex paint  | Major appliances | Used oil     | Used oil filters | Vehicle batteries | Waste tires   | Total problem mats |
|---------------------|------------|--------------|-------------------------|--------------|--------------|------------------|--------------|------------------|-------------------|---------------|--------------------|
| Mower               | 3          | 12           | 4                       | 7            | 4            | 234              | 31           | 18               | 239               | 78            | 631                |
| Murray              | 0          | 2            | 2                       | 3            | 0            | 55               | 15           | 4                | 56                | 25            | 161                |
| Nicollet            | 0          | 37           | 10                      | 0            | 16           | 498              | 25           | 15               | 210               | 162           | 973                |
| Nobles              | 13         | 0            | 11                      | 7            | 3            | 123              | 17           | 10               | 126               | 41            | 351                |
| Norman              | 0          | 8            | 1                       | 2            | 1            | 43               | 6            | 3                | 44                | 14            | 121                |
| Olmsted             | 44         | 975          | 25                      | 121          | 82           | 819              | 109          | 280              | 838               | 273           | 3,566              |
| Otter Tail          | 0          | 65           | 0                       | 39           | 24           | 352              | 47           | 27               | 360               | 117           | 1,033              |
| Pennington          | 0          | 4            | 2                       | 3            | 0            | 82               | 11           | 6                | 84                | 27            | 218                |
| Pine                | 0          | 0            | 0                       | 0            | 0            | 201              | 23           | 13               | 175               | 78            | 490                |
| Pipestone           | 0          | 0            | 0                       | 0            | 0            | 58               | 8            | 4                | 59                | 19            | 148                |
| Polk                | 0          | 0            | 1                       | 0            | 4            | 214              | 25           | 15               | 191               | 136           | 585                |
| Pope/Douglas        | 0          | 5            | 12                      | 26           | 14           | 278              | 37           | 22               | 285               | 93            | 771                |
| Ramsey              | 15         | 224          | 15                      | 29           | 247          | 3,092            | 412          | 241              | 3,164             | 1,031         | 8,469              |
| Red Lake            | 0          | 0            | 0                       | 1            | 0            | 26               | 3            | 2                | 26                | 9             | 68                 |
| Redwood             | 59         | 737          | 13                      | 16           | 7            | 141              | 510          | 25               | 557               | 841           | 2,903              |
| Renville            | 0          | 18           | 2                       | 4            | 28           | 159              | 14           | 8                | 105               | 124           | 462                |
| Rice                | 53         | 93           | 14                      | 16           | 31           | 437              | 49           | 29               | 396               | 123           | 1,241              |
| Rock                | 0          | 1            | 0                       | 1            | 2            | 58               | 8            | 5                | 61                | 73            | 209                |
| Roseau              | 0          | 5            | 6                       | 0            | 1            | 135              | 13           | 10               | 104               | 129           | 403                |
| Scott               | 189        | 163          | 19                      | 75           | 97           | 696              | 93           | 129              | 762               | 232           | 2,455              |
| Sherburne           | 11         | 277          | 16                      | 13           | 13           | 493              | 66           | 38               | 505               | 164           | 1,598              |
| Sibley              | 0          | 14           | 2                       | 0            | 13           | 227              | 12           | 7                | 95                | 98            | 469                |
| St. Louis - partial | 26         | 9            | 10                      | 78           | 0            | 3,490            | 526          | 38               | 499               | 914           | 5,590              |
| Stearns             | 9          | 58           | 5                       | 0            | 0            | 856              | 525          | 67               | 1,516             | 285           | 3,320              |
| Steele              | 0          | 8            | 7                       | 2            | 3            | 214              | 29           | 17               | 219               | 71            | 570                |
| Stevens             | 0          | 9            | 3                       | 5            | 4            | 59               | 8            | 5                | 61                | 20            | 173                |
| Swift               | 0          | 0            | 3                       | 4            | 1            | 70               | 9            | 6                | 76                | 23            | 192                |
| Todd                | 0          | 21           | 1                       | 0            | 1            | 148              | 20           | 12               | 151               | 101           | 455                |
| Traverse            | 0          | 0            | 1                       | 2            | 1            | 29               | 3            | 2                | 23                | 8             | 68                 |
| Wabasha             | 0          | 10           | 2                       | 3            | 4            | 134              | 18           | 10               | 137               | 45            | 363                |
| Wadena              | 0          | 0            | 0                       | 0            | 0            | 120              | 11           | 6                | 181               | 27            | 346                |
| Waseca              | 0          | 0            | 2                       | 3            | 0            | 117              | 16           | 9                | 120               | 39            | 307                |
| Washington          | 14         | 27           | 8                       | 0            | 170          | 1,349            | 180          | 105              | 1,380             | 450           | 3,682              |
| Watsonwan           | 0          | 0            | 1                       | 0            | 2            | 69               | 9            | 5                | 71                | 23            | 182                |
| Wilkin              | 0          | 0            | 2                       | 0            | 0            | 76               | 13           | 8                | 45                | 28            | 172                |
| Winona              | 0          | 0            | 0                       | 21           | 16           | 300              | 40           | 23               | 306               | 100           | 806                |
| WLSSD               | 9          | 382          | 10                      | 137          | 65           | 732              | 93           | 140              | 717               | 234           | 2,519              |
| Wright              | 2          | 51           | 2                       | 42           | 43           | 688              | 89           | 52               | 699               | 232           | 1,900              |
| Yellow              |            |              |                         |              |              |                  |              |                  |                   |               |                    |
| Medicine            | 0          | 0            | 0                       | 0            | 0            | 64               | 9            | 5                | 65                | 21            | 164                |
| <b>Metro Area</b>   | <b>195</b> | <b>3,261</b> | <b>238</b>              | <b>383</b>   | <b>1,373</b> | <b>16,659</b>    | <b>2,256</b> | <b>1,297</b>     | <b>17,995</b>     | <b>5,553</b>  | <b>49,210</b>      |
| <b>Greater MN</b>   | <b>502</b> | <b>3,767</b> | <b>394</b>              | <b>891</b>   | <b>690</b>   | <b>22,701</b>    | <b>5,136</b> | <b>1,750</b>     | <b>17,092</b>     | <b>11,616</b> | <b>64,540</b>      |
| <b>Minnesota</b>    | <b>698</b> | <b>7,028</b> | <b>632</b>              | <b>1,274</b> | <b>2,063</b> | <b>39,361</b>    | <b>7,391</b> | <b>3,048</b>     | <b>35,087</b>     | <b>17,169</b> | <b>113,750</b>     |

## County Survey Responses

### Wastes generated (tons)

| County            | Estimated<br>tons of MSW<br>not collected | Problem mats<br>not collected for<br>recycling | Tons to MSW<br>disposal/processing<br>facilities | Tons<br>collected for<br>recycling | Total tons<br>generated |
|-------------------|---|--|--|------------------------------------|-------------------------|
| Aitkin            | 275                                       | 166  | 8,046  | 2,933                              | 11,419                  |
| Anoka             | 0   | 8,232  | 186,638  | 144,441                            | 339,310                 |
| Becker            | 252                                       | 736  | 17,656   | 12,851                             | 31,495                  |
| Beltrami          | 0   | 1,008  | 21,537   | 6,358                              | 28,903                  |
| Benton            | 2,827                                     | 972  | 19,542   | 29,855                             | 53,196                  |
| Big Stone         | 986                                       | 103  | 2,308  | 916                                | 4,314                   |
| Blue Earth        | 1,399                                     | 813  | 35,920   | 76,530                             | 114,661                 |
| Brown             | 2,267                                     | 664  | 14,290   | 17,109                             | 34,330                  |
| Carlton           | 696                                       | 858  | 13,060   | 5,213                              | 19,826                  |
| Carver            | 294                                       | 2,115  | 53,753   | 45,339                             | 101,500                 |
| Cass              | 210                                       | 453  | 16,821   | 8,194                              | 25,679                  |
| Chippewa          | 1,679                                     | 220  | 9,217  | 2,767                              | 13,884                  |
| Chisago           | 420                                       | 1,246  | 24,354   | 8,262                              | 34,282                  |
| Clay              | 833                                       | 1,008  | 26,738   | 12,904                             | 41,483                  |
| Clearwater        | 42  | 175  | 4,108  | 897                                | 5,222                   |
| Cook              | 30  | 129  | 4,481  | 1,550                              | 6,190                   |
| Cottonwood        | 1,006                                     | 215  | 6,213  | 3,728                              | 11,162                  |
| Crow Wing         | 248                                       | 1,496  | 43,128   | 46,022                             | 90,894                  |
| Dakota            | 0   | 9,694  | 237,643  | 172,357                            | 419,694                 |
| Dodge             | 866                                       | 491  | 9,236  | 4,676                              | 15,268                  |
| Faribault         | 2,180                                     | 371  | 7,550  | 5,811                              | 15,912                  |
| Fillmore          | 3,022                                     | 532  | 5,667  | 2,262                              | 11,483                  |
| Freeborn          | 420                                       | 0  | 25,206   | 17,560                             | 43,185                  |
| Goodhue           | 420                                       | 1,160  | 27,235   | 12,935                             | 41,749                  |
| Grant             | 759                                       | 152  | 2,078  | 897                                | 3,886                   |
| Hennepin          | 0   | 29,026   | 984,538  | 597,138                            | 1,610,702               |
| Houston           | 504                                       | 343  | 4,880  | 2,441                              | 8,168                   |
| Hubbard           | 0   | 268  | 14,811   | 7,522                              | 22,601                  |
| Isanti            | 2,728                                     | 951  | 23,084   | 6,612                              | 33,375                  |
| Itasca            | 466                                       | 1,050  | 26,264   | 15,708                             | 43,488                  |
| Jackson           | 942                                       | 279  | 4,330  | 2,670                              | 8,220                   |
| Kanabec           | 1,259                                     | 236  | 9,174  | 1,260                              | 11,928                  |
| Kandiyohi         | 840                                       | 1,046  | 25,953   | 7,309                              | 35,147                  |
| Kittson           | 97  | 120  | 1,727  | 706                                | 2,649                   |
| Koochiching       | 315                                       | 344  | 8,278  | 3,463                              | 12,400                  |
| Lac qui Parle     | 1,679                                     | 171  | 3,485  | 1,105                              | 6,440                   |
| Lake              | 252                                       | 73   | 5,566  | 4,090                              | 9,981                   |
| Lake of The Woods | 17  | 76   | 2,631  | 1,087                              | 3,811                   |
| Le Sueur          | 1,028                                     | 623  | 14,545   | 11,560                             | 27,756                  |
| Lincoln           | 1,007                                     | 118  | 2,191  | 704                                | 4,021                   |
| Lyon              | 854                                       | 628  | 20,110   | 8,736                              | 30,328                  |
| Mahnomen          | 217                                       | 129  | 1,658  | 350                                | 2,354                   |
| Marshall          | 315                                       | 250  | 5,162  | 841                                | 6,567                   |
| Martin            | 2,375                                     | 228  | 9,162  | 23,260                             | 35,024                  |
| McLeod            | 3,085                                     | 924  | 23,651   | 10,425                             | 38,085                  |
| Meeker            | 630                                       | 591  | 9,158  | 3,432                              | 13,810                  |
| Mille Lacs        | 1,679                                     | 646  | 11,000   | 2,039                              | 15,363                  |
| Morrison          | 378                                       | 247  | 12,683   | 35,797                             | 49,105                  |
| Mower             | 1,352                                     | 982  | 26,896   | 24,249                             | 53,478                  |

## County Survey Responses

### Wastes generated (tons)

| County              | Estimated tons of MSW not collected | Problem mats not collected for recycling | Tons to MSW disposal/processing facilities | Tons collected for recycling | Total tons generated |
|---------------------|-------------------------------------|--|--|------------------------------|----------------------|
| Murray              | 890                                 | 205                                      | 3,180                                      | 2,463                        | 6,737                |
| Nicollet            | 1,049                               | 632                                      | 18,551                                     | 14,225                       | 34,458               |
| Nobles              | 1,217                               | 518                                      | 8,634                                      | 6,767                        | 17,136               |
| Norman              | 21                                  | 177                                      | 3,280                                      | 1,048                        | 4,526                |
| Olmsted             | 534                                 | 3,435                                    | 86,679                                     | 60,456                       | 151,104              |
| Otter Tail          | 982                                 | 1,480                                    | 33,643                                     | 28,927                       | 65,032               |
| Pennington          | 1,637                               | 343                                      | 12,947                                     | 2,275                        | 17,202               |
| Pine                | 1,767                               | 666                                      | 18,728                                     | 5,875                        | 27,036               |
| Pipestone           | 1,196                               | 237                                      | 4,851                                      | 3,663                        | 9,947                |
| Polk                | 189                                 | 680                                      | 17,127                                     | 11,132                       | 29,128               |
| Pope/Douglas        | 496                                 | 1,170                                    | 30,973                                     | 21,412                       | 54,051               |
| Ramsey              | 0                                   | 12,992                                   | 418,166                                    | 298,144                      | 729,302              |
| Red Lake            | 8                                   | 109                                      | 1,576                                      | 545                          | 2,238                |
| Redwood             | 1,891                               | 0  | 8,273                                      | 16,272                       | 26,436               |
| Renville            | 2,183                               | 305                                      | 8,471                                      | 3,337                        | 14,296               |
| Rice                | 2,560                               | 1,466                                    | 43,442                                     | 45,005                       | 92,474               |
| Rock                | 588                                 | 183                                      | 3,934                                      | 4,278                        | 8,982                |
| Roseau              | 682                                 | 291                                      | 10,213                                     | 9,691                        | 20,877               |
| Scott               | 14                                  | 2,869                                    | 68,615                                     | 66,340                       | 137,837              |
| Sherburne           | 1,249                               | 2,074                                    | 50,066                                     | 30,309                       | 83,698               |
| Sibley              | 443                                 | 296                                      | 5,989                                      | 5,314                        | 12,043               |
| St. Louis - partial | 331                                 | 816                                      | 54,066                                     | 61,483                       | 116,696              |
| Stearns             | 1,214                               | 3,122                                    | 74,241                                     | 77,334                       | 155,911              |
| Steele              | 1,091                               | 899                                      | 33,927                                     | 42,855                       | 78,773               |
| Stevens             | 405                                 | 247                                      | 5,136                                      | 1,486                        | 7,273                |
| Swift               | 828                                 | 281                                      | 4,928                                      | 2,107                        | 8,144                |
| Todd                | 1,049                               | 568                                      | 11,043                                     | 17,952                       | 30,612               |
| Traverse            | 504                                 | 91                                       | 1,383                                      | 456                          | 2,434                |
| Wabasha             | 614                                 | 564                                      | 7,776                                      | 9,134                        | 18,088               |
| Wadena              | 378                                 | 318                                      | 8,356                                      | 7,419                        | 16,471               |
| Waseca              | 78                                  | 493                                      | 10,447                                     | 38,997                       | 50,015               |
| Washington          | 0                                   | 5,671                                    | 94,106                                     | 85,889                       | 185,666              |
| Watonwan            | 1,049                               | 290                                      | 6,842                                      | 2,802                        | 10,984               |
| Wilkin              | 840                                 | 135                                      | 2,098                                      | 994                          | 4,067                |
| Winona              | 1,268                               | 1,259                                    | 26,978                                     | 21,784                       | 51,289               |
| WLSSD               | 3,652                               | 2,909                                    | 66,921                                     | 50,507                       | 123,989              |
| Wright              | 1,679                               | 2,742                                    | 48,000                                     | 16,827                       | 69,248               |
| Yellow Medicine     | 1,217                               | 266                                      | 4,904                                      | 1,429                        | 7,816                |
| Metro Area          | 308                                 | 70,598                                   | 2,043,459                                  | 1,409,646                    | 3,524,011            |
| Greater Minn.       | 78,633                              | 52,557                                   | 1,348,392                                  | 1,082,152                    | 2,561,733            |
| Minnesota           | 78,940                              | 123,155                                  | 3,391,851                                  | 2,491,798                    | 6,085,744            |

X:\EA\Solid Waste\SCORE\Appendix\Appx05\4credit.XLS]Appx Generation

## County Survey Responses

### Recycling rate

| County            | Tons collected for recycling | Total MSW generated | Percent of MSW collected for recycling | Source reduction credit | Yard waste credit | Recycling rate with credits |
|-------------------|------------------------------|---------------------|--|-------------------------|-------------------|-----------------------------|
| Aitkin            | 2,933                        | 11,419              | 25.7%                                  | 3%                      | 5%                | 33.7%                       |
| Anoka             | 144,441                      | 339,310             | 42.6%                                  | 3%                      | 5%                | 50.6%                       |
| Becker            | 12,851                       | 31,495              | 40.8%                                  | 3%                      | 5%                | 48.8%                       |
| Beltrami          | 6,358                        | 28,903              | 22.0%                                  | 2%                      | 5%                | 29.0%                       |
| Benton            | 29,855                       | 53,196              | 56.1%                                  | 2%                      | 5%                | 63.1%                       |
| Big Stone         | 916                          | 4,314               | 21.2%                                  | 2%                      | 3%                | 26.2%                       |
| Blue Earth        | 76,530                       | 114,661             | 66.7%                                  | 3%                      | 5%                | 74.7%                       |
| Brown             | 17,109                       | 34,330              | 49.8%                                  | 3%                      | 5%                | 57.8%                       |
| Carlton           | 5,213                        | 19,826              | 26.3%                                  | 3%                      | 5%                | 34.3%                       |
| Carver            | 45,339                       | 101,500             | 44.7%                                  | 3%                      | 5%                | 52.7%                       |
| Cass              | 8,194                        | 25,679              | 31.9%                                  | 2%                      | 5%                | 38.9%                       |
| Chippewa          | 2,767                        | 13,884              | 19.9%                                  | 0%                      | 5%                | 24.9%                       |
| Chisago           | 8,262                        | 34,282              | 24.1%                                  | 3%                      | 5%                | 32.1%                       |
| Clay              | 12,904                       | 41,483              | 31.1%                                  | 3%                      | 5%                | 39.1%                       |
| Clearwater        | 897                          | 5,222               | 17.2%                                  | 2%                      | 5%                | 24.2%                       |
| Cook              | 1,550                        | 6,190               | 25.0%                                  | 3%                      | 5%                | 33.0%                       |
| Cottonwood        | 3,728                        | 11,162              | 33.4%                                  | 3%                      | 5%                | 41.4%                       |
| Crow Wing         | 46,022                       | 90,894              | 50.6%                                  | 6%                      | 5%                | 62.1%                       |
| Dakota            | 172,357                      | 419,694             | 41.1%                                  | 3%                      | 5%                | 49.1%                       |
| Dodge             | 4,676                        | 15,268              | 30.6%                                  | 2%                      | 5%                | 37.6%                       |
| Faribault         | 5,811                        | 15,912              | 36.5%                                  | 3%                      | 5%                | 44.5%                       |
| Fillmore          | 2,262                        | 11,483              | 19.7%                                  | 3%                      | 5%                | 27.7%                       |
| Freeborn          | 17,560                       | 43,185              | 40.7%                                  | 3%                      | 5%                | 48.7%                       |
| Goodhue           | 12,935                       | 41,749              | 31.0%                                  | 1%                      | 5%                | 37.0%                       |
| Grant             | 897                          | 3,886               | 23.1%                                  | 0%                      | 5%                | 28.1%                       |
| Hennepin          | 597,138                      | 1,610,702           | 37.1%                                  | 3%                      | 5%                | 45.1%                       |
| Houston           | 2,441                        | 8,168               | 29.9%                                  | 3%                      | 5%                | 37.9%                       |
| Hubbard           | 7,522                        | 22,601              | 33.3%                                  | 3%                      | 5%                | 41.3%                       |
| Isanti            | 6,612                        | 33,375              | 19.8%                                  | 2%                      | 5%                | 26.8%                       |
| Itasca            | 15,708                       | 43,488              | 36.1%                                  | 3%                      | 5%                | 44.1%                       |
| Jackson           | 2,670                        | 8,220               | 32.5%                                  | 3%                      | 5%                | 40.5%                       |
| Kanabec           | 1,260                        | 11,928              | 10.6%                                  | 1%                      | 5%                | 16.6%                       |
| Kandiyohi         | 7,309                        | 35,147              | 20.8%                                  | 2%                      | 5%                | 27.8%                       |
| Kittson           | 706                          | 2,649               | 26.6%                                  | 3%                      | 5%                | 34.6%                       |
| Koochiching       | 3,463                        | 12,400              | 27.9%                                  | 1%                      | 3%                | 31.9%                       |
| Lac qui Parle     | 1,105                        | 6,440               | 17.2%                                  | 3%                      | 5%                | 25.2%                       |
| Lake              | 4,090                        | 9,981               | 41.0%                                  | 3%                      | 5%                | 49.0%                       |
| Lake of The Woods | 1,087                        | 3,811               | 28.5%                                  | 1%                      | 5%                | 34.5%                       |
| Le Sueur          | 11,560                       | 27,756              | 41.6%                                  | 3%                      | 5%                | 49.6%                       |
| Lincoln           | 704                          | 4,021               | 17.5%                                  | 3%                      | 5%                | 25.5%                       |
| Lyon              | 8,736                        | 30,328              | 28.8%                                  | 2%                      | 5%                | 35.8%                       |
| Mahnomen          | 350                          | 2,354               | 14.9%                                  | 3%                      | 5%                | 22.9%                       |
| Marshall          | 841                          | 6,567               | 12.8%                                  | 3%                      | 5%                | 20.8%                       |
| Martin            | 23,260                       | 35,024              | 66.4%                                  | 3%                      | 5%                | 74.4%                       |
| McLeod            | 10,425                       | 38,085              | 27.4%                                  | 2%                      | 5%                | 34.4%                       |
| Meeker            | 3,432                        | 13,810              | 24.8%                                  | 3%                      | 5%                | 32.8%                       |
| Mille Lacs        | 2,039                        | 15,363              | 13.3%                                  | 1%                      | 5%                | 19.3%                       |
| Morrison          | 35,797                       | 49,105              | 72.9%                                  | 3%                      | 5%                | 80.9%                       |
| Mower             | 24,249                       | 53,478              | 45.3%                                  | 3%                      | 5%                | 53.3%                       |

## County Survey Responses

### Recycling rate

| County              | Tons collected for recycling | Total MSW generated | Percent of MSW collected for recycling | Source reduction credit | Yard waste credit | Recycling rate with credits |
|---------------------|------------------------------|---------------------|--|-------------------------|-------------------|-----------------------------|
| Murray              | 2,463                        | 6,737               | 36.6%                                  | 3%                      | 5%                | 44.6%                       |
| Nicollet            | 14,225                       | 34,458              | 41.3%                                  | 3%                      | 5%                | 49.3%                       |
| Nobles              | 6,767                        | 17,136              | 39.5%                                  | 3%                      | 5%                | 47.5%                       |
| Norman              | 1,048                        | 4,526               | 23.2%                                  | 0%                      | 5%                | 28.2%                       |
| Olmsted             | 60,456                       | 151,104             | 40.0%                                  | 3%                      | 5%                | 48.0%                       |
| Otter Tail          | 28,927                       | 65,032              | 44.5%                                  | 3%                      | 5%                | 52.5%                       |
| Pennington          | 2,275                        | 17,202              | 13.2%                                  | 3%                      | 5%                | 21.2%                       |
| Pine                | 5,875                        | 27,036              | 21.7%                                  | 3%                      | 5%                | 29.7%                       |
| Pipestone           | 3,663                        | 9,947               | 36.8%                                  | 3%                      | 5%                | 44.8%                       |
| Polk                | 11,132                       | 29,128              | 38.2%                                  | 3%                      | 5%                | 46.2%                       |
| Pope/Douglas        | 21,412                       | 54,051              | 39.6%                                  | 3%                      | 5%                | 47.6%                       |
| Ramsey              | 298,144                      | 729,302             | 40.9%                                  | 3%                      | 5%                | 48.9%                       |
| Red Lake            | 545                          | 2,238               | 24.4%                                  | 3%                      | 5%                | 32.4%                       |
| Redwood             | 16,272                       | 26,436              | 61.6%                                  | 3%                      | 5%                | 69.6%                       |
| Renville            | 3,337                        | 14,296              | 23.3%                                  | 3%                      | 3%                | 29.3%                       |
| Rice                | 45,005                       | 92,474              | 48.7%                                  | 3%                      | 5%                | 56.7%                       |
| Rock                | 4,278                        | 8,982               | 47.6%                                  | 3%                      | 5%                | 55.6%                       |
| Roseau              | 9,691                        | 20,877              | 46.4%                                  | 3%                      | 5%                | 54.4%                       |
| Scott               | 66,340                       | 137,837             | 48.1%                                  | 3%                      | 5%                | 56.1%                       |
| Sherburne           | 30,309                       | 83,698              | 36.2%                                  | 3%                      | 5%                | 44.2%                       |
| Sibley              | 5,314                        | 12,043              | 44.1%                                  | 3%                      | 5%                | 52.1%                       |
| St. Louis - partial | 61,483                       | 116,696             | 52.7%                                  | 3%                      | 5%                | 60.7%                       |
| Stearns             | 77,334                       | 155,911             | 49.6%                                  | 3%                      | 5%                | 57.6%                       |
| Steele              | 42,855                       | 78,773              | 54.4%                                  | 2%                      | 5%                | 61.4%                       |
| Stevens             | 1,486                        | 7,273               | 20.4%                                  | 3%                      | 5%                | 28.4%                       |
| Swift               | 2,107                        | 8,144               | 25.9%                                  | 3%                      | 5%                | 33.9%                       |
| Todd                | 17,952                       | 30,612              | 58.6%                                  | 2%                      | 5%                | 65.6%                       |
| Traverse            | 456                          | 2,434               | 18.8%                                  | 3%                      | 5%                | 26.8%                       |
| Wabasha             | 9,134                        | 18,088              | 50.5%                                  | 3%                      | 5%                | 58.5%                       |
| Wadena              | 7,419                        | 16,471              | 45.0%                                  | 2%                      | 5%                | 52.0%                       |
| Waseca              | 38,997                       | 50,015              | 78.0%                                  | 2%                      | 5%                | 85.0%                       |
| Washington          | 85,889                       | 185,666             | 46.3%                                  | 3%                      | 5%                | 54.3%                       |
| Watonwan            | 2,802                        | 10,984              | 25.5%                                  | 0%                      | 5%                | 30.5%                       |
| Wilkin              | 994                          | 4,067               | 24.4%                                  | 3%                      | 5%                | 32.4%                       |
| Winona              | 21,784                       | 51,289              | 42.5%                                  | 3%                      | 5%                | 50.5%                       |
| WLSSD               | 50,507                       | 123,989             | 40.7%                                  | 2%                      | 5%                | 47.7%                       |
| Wright              | 16,827                       | 69,248              | 24.3%                                  | 3%                      | 5%                | 32.3%                       |
| Yellow Medicine     | 1,429                        | 7,816               | 18.3%                                  | 2%                      | 5%                | 25.3%                       |
| Metro Area          | 1,409,646                    | 3,524,011           | 40.00%                                 | 3.0%                    | 5.0%              | 48.0%                       |
| Greater Minn.       | 1,082,152                    | 2,561,733           | 42.24%                                 | 2.6%                    | 4.9%              | 49.7%                       |
| Minnesota           | 2,491,798                    | 6,085,744           | 40.94%                                 | 2.6%                    | 4.9%              | 48.5%                       |