

06 - 0289

# Northwest Regional Development Commission



**Annual Report**  
**June 2004 - December 2005**

# Table of Contents

## General Highlights

Letter from the Chairman . . . . .	3
Introduction and NWRDC Staff List . . . . .	4
Commission Membership List . . . . .	5
Budget . . . . .	6

## Program Highlights

Aging . . . . .	8-10
Arts . . . . .	11-13
Economic Development . . . . .	14-15
Community Development . . . . .	16-17
Enterprise Loan Fund . . . . .	18
Hazard Mitigation . . . . .	19
Housing . . . . .	20
JOBZ . . . . .	21
Special Projects . . . . .	22
Transportation . . . . .	23-24
Publications . . . . .	25
Committee Lists . . . . .	26

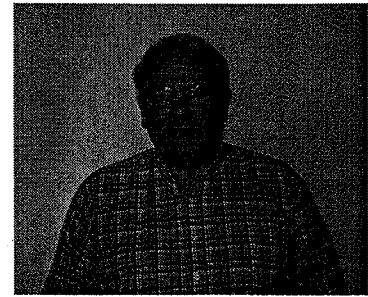
<b>Audit Letter . . . . .</b>	<b>27</b>
-------------------------------	-----------

Working for Local Units of Government in Kittson, Marshall, Norman,  
Pennington, Polk, Red Lake and Roseau Counties

NWRDC • 115 South Main, Suite 1 •  
Warren, MN 56762 • 218-745-6733  
Agency Web Site Address: [www.nwrdc.org](http://www.nwrdc.org)

# Letter from the Chairman

## Dr. Joe Bouvette



### "Local Elected Officials Help Keep Us on Track"

The participation of elected officials from townships, cities, and counties is a critical factor in keeping the Northwest Regional Development Commission both productive and focused on our mission. Elected officials bring a unique wisdom to the table (one driven by having to face the voters) and the legal authority to move certain issues forward. The successful reorganization of our Aging services and the new initiative in township mapping and ATV development are two very good examples.

The newly formed Land of the Dancing Sky Area Agency on Aging, which now includes economic development regions 1, 2, and 4, is the result of four years of bargaining, debating, and innovating to maintain locally responsive programs for seniors. County Commissioners

from the 21 Counties worked with Aging Advisory Committee members, the Minnesota Board on Aging, and AAA staff, to create a unique structure which centralizes some administrative functions while maintaining local decision making and a strong service presence in each region.

Our new township mapping program started as part of the ATV trails debate and challenges concerning legal authority over certain roadways. Township officials and NWRDC staff investigated the situation and discovered townships can officially record their roadways without the expense of a road survey by using a Geographical Information System (GIS). Although this will not end the debate, it will put townships in a better position to represent local preferences.

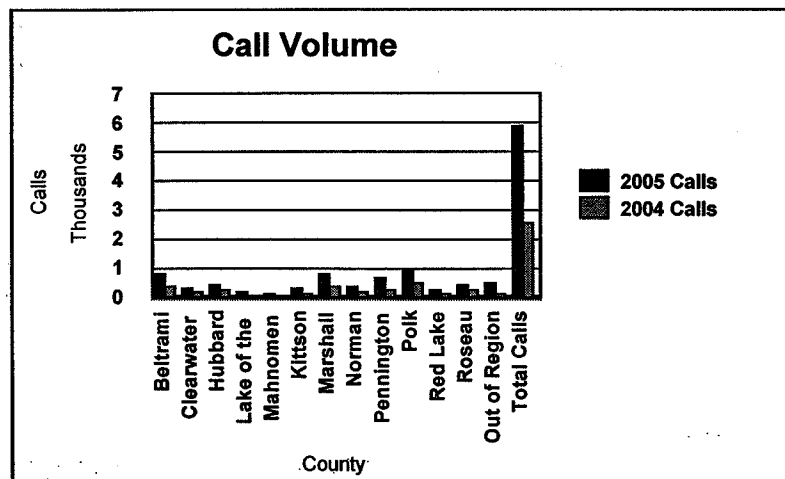
I would like to thank elected officials and committee members for the time and wisdom they bring to our work.

### Ready ... Set ... Go!

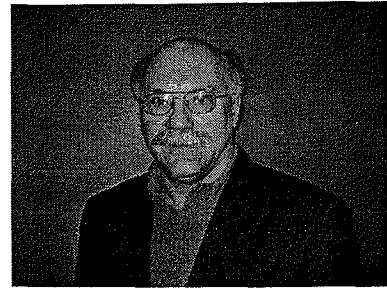
This was the theme selected by the Minnesota Board on Aging for the Medicare Part D awareness campaign. The Senior LinkAge Line® was more than ready and set to help people with Medicare learn about Medicare Part D options, and benefits during 2004 and 2005.

During 2005, the Senior LinkAge Line® experienced a significant increase in call volume over 2004 levels. Our call volume increased 84%, from 3,190 unduplicated calls received during 2004, to 5,884 calls received during 2005. Of the calls received during 2005, 2,879 calls or 48.9% occurred during the months of October, November, and December.

Through over 120 community presentations, booths at health fairs, other community events, and coordinating individual appointments at community settings, the Senior LinkAge Line® and Aging Program was successful in helping many people select and enroll in a Medicare Part D plan. Since the first deadline to enroll in a Medicare Part D plan is May 15, 2006, the Senior LinkAge Line® and Aging Program will continue to be ready and set to help people with Medicare in our planning and service area.



# NW Regional Development Commission

Above: Leon Heath, Executive Director

## *What The NWRDC is All About . . .*

Regional Development Commissions were created by the State Legislature through the Regional Development Act of 1969. The intent of the Act was to create an option for rural units of government to supplement existing public services and coordinate specific activities of mutual concern. Although created by the State, Regional Development Commissions were left in the hands of local representatives to insure that the final design would reflect area needs and preferences.

The Northwest Regional Development Commission was created on February 2, 1973 by the joint actions of local units of government. Programs were set up to reflect priority work items of the time; and relationships were established with the state and federal agencies that could provide assistance with local projects. Programs and work priorities have changed in response to economic

and social trends; but the central mission of supporting efforts by cities, counties, townships, businesses and individuals to improve living, working and natural resource conditions in Northwest Minnesota has remained the same.

The Commission has worked to establish a manner of operation which reflects and compliments the independent, progressive style of Northwest Minnesota. Technical assistance, specialized program delivery, public participation, direct funding, access to information and formalized planning services are the basic materials which we can contribute to the construction of your project.

Please look over our Annual Report and stop by or call if you have any questions, comments or suggestions.

Right: Carol Sorensen,  
Financial Officer



Right: Betty Safranski,  
Front Office Assistant/  
Aging Assistant

Left: Brenda Solberg,  
Front Office Manager/  
Financial Assistant



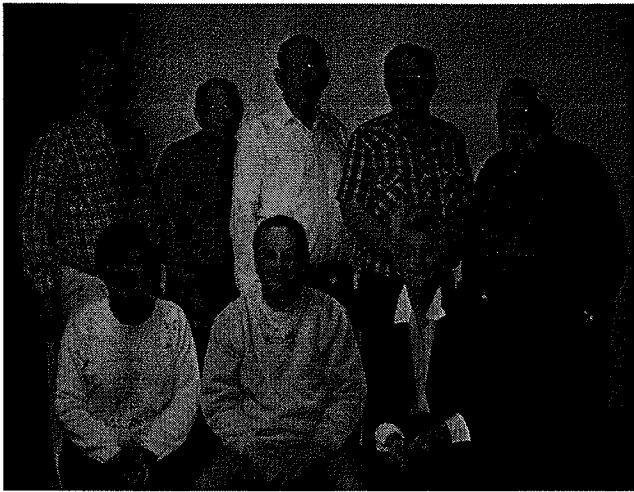
## Staff Listing

### NWRDC Staff

Darla Bergquist, Region 2 Aging Program Developer  
Tracey Ebertowski, Senior LinkAge/RxConnect Specialist  
Cameron Fanfulik, Loan Fund Manager  
Leon Heath, Executive Director  
Jennifer Olson, Hazard Mitigation Planner  
Lois Pagnac, Senior LinkAge/Outreach Specialist  
Rose Reed, Senior LinkAge Specialist  
Danica Robson, Aging Program Director  
Betty Safranski, Front Office Assistant/Aging Asst.  
Troy Schroeder, Transportation Planner  
Brenda Solberg, Front Office Manager/Financial Asst.  
Carol Sorensen, Financial Officer  
Mara Wittman, Arts Council Director

Staff who worked at the NWRDC this past year, but no longer work at the RDC: Kay Hegge

# Northwest Regional Development Commission



## NWRDC Board of Directors

Seated (left to right) Velma Oakland, Warren Strandell and Kimberley Johnson. Standing (left to right) Dr. Joe Bouvette, John Erickson, Warren Olson, Delray Larson and Orris Rasmussen.

## COMMISSION MEMBERSHIP

### Kittson County

**Dr. Joe Bouvette	Hallock	County
*Kimberley Johnson	Kennedy	Townships
Charles Lindberg	Kennedy	Industry
Dale Nelson	Karlstad	Municipalities
Gregory Peterson	Lancaster	Municipalities
Betty Younggren	Hallock	SWCD

### Marshall County

*Delray Larson	Gatzke	County
Ruth Magnusson	Argyle	Townships
Ole Soltvedt	Oslo	Municipalities
Gail Yutzenka	Argyle	School Board

### Norman County

Glen Brookshire	Halstad	Municipalities
Fred Jamison	Ada	Townships
*Warren Olson	Halstad	County

### Pennington County

Elvera Cullen	TRF	Municipalities
*John Erickson	RLF	Townships
Oliver Swanson	TRF	County

### Polk County

Eugene Dufault	Crookston	Townships
James Herdliska	Erskine	Municipalities
Martha Hurtado	Crookston	Minorities
Gerald Jacobson	Fertile	Labor
Bill Montague	Crookston	Financial Institute
*Warren Strandell	EGF	County
Tracey Sundeen	Crookston	Seniors
Arlene Tucker	Crookston	Women
Kathleen Twite	EGF	Business

### Red Lake County

Cathrine Johnson	Oklee	School Board
Genevieve Knott	RLF	Townships
Robert Melby	Oklee	Low Income
*Velma Oakland	RLF	County
Vaughn Thorfinnson	RLF	Vocational Schools
Ronald Weiss	RLF	Watershed Dist.

### Roseau County

Bruce Olson	Badger	Townships
*Orris Rasmussen	Roseau	County
Lorri Wong	Warroad	Municipalities

### \*Board Members

### \*\*Chairperson

Members who served for part of FY'2004 & 2005: Wayne Bergeron, Sandra Hapka, Daniel Johnson, Roy Jorgenson, Bernie Solberg, Katya Zepeda, Allen Ducharme, Betty Halvorson and Sylvia Rude



Above: Left to Right - NWRDC Members Velma Oakland, Tracey Sundeen, Kathleen Twite and Arlene Tucker at the March Commission Meeting in Hallock.

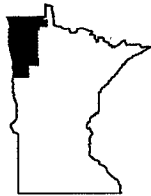
## Commission Budget

<u>REVENUES</u>	<u>ACTUAL REVENUES 7/1/04-12/31/05</u>	<u>PROJECTED CY'2006</u>
<b>FEDERAL</b>		
ECONOMIC DEVELOPMENT ADMIN.	\$90,063	\$52,628
USDA	\$6,288	\$0
	\$96,351	\$52,628
<b>STATE</b>		
MN/DOT	\$75,210	\$50,012
STATE ARTS BOARD	\$134,148	\$88,375
MINNESOTA BOARD ON AGING	\$3,596,222	\$3,304,252
MINNESOTA DEPARTMENT OF PUBLIC SAFETY	\$56,959	\$8,000
MINNESOTA HOUSING FINANCE AGENCY	\$1,361,986	\$200,000
LMIC	\$3,750	
	\$5,228,275	\$3,650,639
<b>PRIVATE FOUNDATIONS</b>		
MCKNIGHT FOUNDATION - ARTS	\$31,004	\$24,000
NW MN FOUNDATION	\$21,652	\$10,000
	\$52,656	\$34,000
<b>LOCAL GOVERNMENTAL</b>		
LOCAL LEVY	\$281,684	\$197,059
LOCAL CONTRACTS	\$45,238	\$11,000
LOCAL HOUSES SOLD AND PAYBACK	\$847,825	\$321,425
LOCAL CONTRACTS ICWC CREWS	\$293,883	\$0
	\$1,468,630	\$529,484
<b>MISCELLANEOUS</b>		
NORTHWEST ENTERPRISE FUND	\$1,120,503	\$568,878
INTEREST	\$15,194	\$7,193
CONFERENCE REGIST./MISC.	\$10,412	\$1,000
IN-KIND	\$28,731	\$0
RESERVED		\$37,653
	\$1,174,840	\$614,724
<b>TOTAL REVENUES</b>	<b><u>\$8,020,752</u></b>	<b><u>\$4,881,475 *</u></b>

<u>EXPENDITURES</u>	<u>ACTUAL EXPENDITURES 7/1/04-12/31/05</u>	<u>PROJECTED CY'06</u>
SALARY/FRINGE	\$962,018	\$642,404
STAFF TRAVEL & REGISTRATIONS	\$69,983	\$63,260
COMMISSION/COMMITTEE TRAVEL/PER DIEM	\$49,923	\$44,028
PROFESSIONAL FEES	\$13,484	\$29,700
PRINTING & POSTAGE	\$30,829	\$36,396
RENT & MAINTENANCE	\$17,505	\$13,550
WORKSHOP/CONFERENCE COSTS	\$10,236	\$8,650
TELEPHONE & INTERNET COSTS	\$18,309	\$14,933
SUPPLIES	\$27,840	\$16,822
EQUIPMENT PURCHASED BY PROGRAMS	\$7,232	\$0
SBDC MATCH	\$1,000	\$1,000
IN-KIND EXPENSE	\$28,731	\$0
OTHER OFFICE EXPENSES	\$58,609	\$40,381
<b>TOTAL ADMINISTRATIVE</b>	<b>\$1,295,699</b>	<b>\$911,124</b>
REGRANTED-ARTS	\$88,210	\$51,261
REGRANTED-AGING	\$1,605,171	\$1,506,650
REGION 4 AGING PROGRAM	\$1,444,652	\$1,391,015
BUSINESS LOANS	\$1,051,750	\$500,000
HOUSING PASS THROUGH FUNDS	\$2,502,425	\$521,425
FIXED ASSETS/RESTRICTED FUND	\$3,285	\$5,000
DEPRECIATION	(\$10,910)	(\$6,300)
	(\$7,625)	(\$1,300)
<b>TOTAL EXPENDITURES</b>	<b><u>\$7,980,282</u></b>	<b><u>\$4,880,175</u></b>
<b>INCREASE (DECREASE) TO FUND BALANCE</b>	<b><u>\$40,470</u></b>	<b><u>\$0</u></b>

# *Program Highlights*

**NW Regional  
Development  
Commission**



**Program Highlights**  
June, 2004 - December, 2005

Serving  
*Kittson, Marshall, Norman, Pennington  
Polk, Red Lake, Roseau*

# Aging

## AREA AGENCY ON AGING

**Purpose:** To build a proactive, comprehensive and coordinated system of advocacy and services that ensures the rights and benefits of all older people.

**Program Funding Sources:** Older Americans Act through the Minnesota Board on Aging - \$265,270; Minnesota Board on Aging EDP - \$6,342; RDC Tax Levy - \$90,452; Miscellaneous - \$10,284.

**Regrant Funding Sources:** Older Americans Act - \$1,060,293; U.S. Department of Agriculture Nutrition Program - \$276,845; State Nutrition Program - \$268,033; Region 4 AAA Pass Through - \$1,311,199.

**Service Priorities:** Regrant priorities are: nutrition, congregate and home delivered meals, legal service, transportation, chore/home repair, housekeeping, visiting and medical forms assistance. Support priorities are advocacy, education, support of county committees on aging and senior centers, inter-agency linkages, and information/referral.

## *Aging Highlights*

### **New Name, Larger Planning and Service Area ...**

In January 2005, the Area Agency on Aging received a new name, and larger planning and service area. As part of the move to consolidate Area Agencies on Aging across Minnesota, the Northwest Area Agency on Aging began a collaborative relationship with the West Central Area Agency on Aging. The Land of the Dancing Sky Area Agency on Aging is the result of this partnership, serving 21 counties in northwest and west central Minnesota.

### **Eldercare Development Project ...**

In 2005, we were selected to be one of six Eldercare Development Projects (EDP) across Minnesota. The primary focus of Eldercare Development Projects is to increase the availability of community based options for seniors, and to improve the capacity of communities to meet the needs of seniors and elders within their population. Our efforts will focus around increasing the availability of Parish Nurse Programs and Health Ministries, and to increase the availability of residential options including adult foster care, assisted living, and other less restrictive options for seniors.



*Above: Seated (left to right) Betty Safranski, Aging Assistant, Rose Reed, Senior LinkAge Specialist. Standing (left to right) Lois Pagnac, Senior LinkAge/Outreach Specialist, Tracey Ebertowski, Senior LinkAge/RxConnect Specialist, Darla Bergquist, Region 2 Aging Program Developer and Danica Robson, Aging Program Director.*

### **Adult Foster Care Development ...**

Established a partnership with the Northwest Adult Foster Care Coalition. This partnership has been formed for the purpose of sharing information, training and facilitate referrals for services and assistance. Technical assistance was provided to individuals interested in the development of Adult Foster Homes as an alternative housing option for seniors.

### **Community Service/Service Dev. Grantees ...**

Assisted seven agencies with the development of Community Service/Service Development Grants. These grants are funded from the Department of Human Services, and are focused on developing community based alternatives to nursing home care.

### **Nutritional Assistance Program for Seniors ...**

Developed the NAPS program in Clearwater County, which provides a monthly food package to income eligible seniors. To date 91 seniors are participating in the NAPS program within Clearwater County.

### **Parish Nurse Partnership and Development ...**

Established Partnerships with Parish Nurse programs in Hubbard and Beltrami County. Technical assistance was provided to Parish nurses in the areas of information, training and development of Parish Nurse Programs.

### **Eldercare Development Project ...**

Coordinated seven informational meetings that focused on the expansion of Parish Nurse Programs in a multi-county region. Provided technical assistance to various churches and clergy interested in the development of a Health Ministry Cabinet.

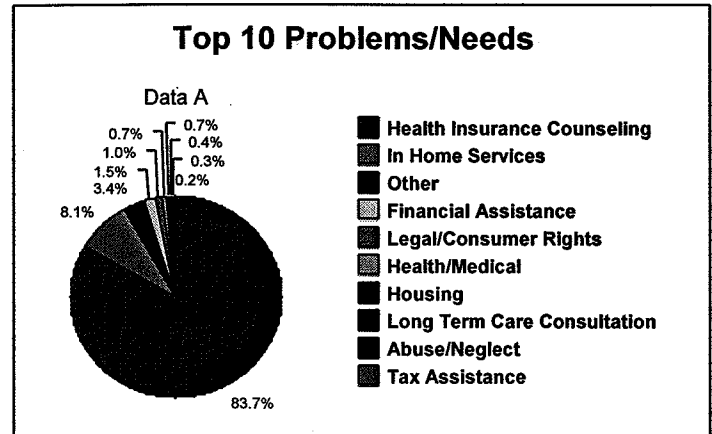


## Aging continued

**Purpose:** This offers older adults, Medicare beneficiaries and their family members assistance in obtaining appropriate health care coverage, entitled Medicare/Medicaid insurance benefits.

**Funding Sources:** Minnesota Board on Aging - \$274,787; RDC Tax Levy - \$10,700; and Miscellaneous - \$7,385. Region 4 AAA Pass Through - \$133,453.

**Service Priorities:** Specially trained volunteer health insurance counselors are available to assist all seniors, free of charge, with information and assistance on a confidential one-to-one basis. The program also serves to educate the public about the health care reimbursement systems and increase awareness of the program to seniors and family members.



## Senior LinkAge Line® Highlights

### Presentations ...

Provided information at 121 presentations to 3,751 seniors, family members and caregivers on Medicare prescription drug plans, advance directives, senior programs, etc.

### Health Fairs...

Information was provided to 1,410 seniors, family members, and caregivers through participation in 19 Health Fair and Resource Booths. These events were sponsored by employers, schools, human service agencies, and senior centers.

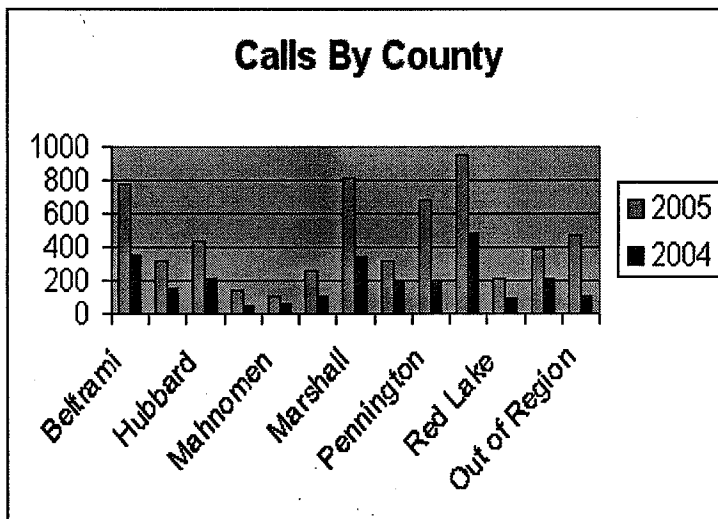
### Clinic Site Assistance ...

Seniors and caregivers received in person assistance at clinic sites that were developed or maintained in Baudette, Park Rapids, Hallock, and Thief River Falls.

### Volunteers ...

We extend a sincere Thank You to our Volunteers who have played a huge role in the implementation of the Medicare Part D Prescription Drug Benefit. By assisting with education, individual plan comparisons, counseling, enrollment and office support, they volunteered a total of 345 hours. We relied on our core base of capable longtime volunteers and recruited an additional 17 new volunteers. We provided 13 training sessions for these volunteers.

## Calls By County



	<u>2005</u>	<u>2004</u>
Beltrami	779	351
Clearwater	314	157
Hubbard	431	217
Lake of the Woods	144	49
Mahnomen	111	59
Kittson	261	107
Marshall	813	343
Norman	316	189
Pennington	679	200
Polk	949	482
Red Lake	217	95
Roseau	385	213
Out of Region	472	111
<b>Total Calls</b>	<b>5871</b>	<b>2573</b>

## *2005 Aging Grantees*

**Kittson County Senior Medical Travel** - Provided a total of 265 one-way trips to 33 persons.

**Northwest Sentencing to Service Chore Program** - Provided a total of 2,456 hours of chore service to 212 persons.

**Roseau County Senior Medical Travel** - Provided a total of 962 one-way trips to 65 persons.

**Roseau County Sentencing to Service Chore Program** - Provided 2,592 hours of chore services to 32 persons.

**Tri-County Community Corrections Sentencing to Service Chore Program** - Provided 3,369.5 hours of chore service to 173 persons.

**Valley Houskeeping Program** - Provided 10,272.5 hours of homemaker services to 220 persons.

**LSS Caregiver/Respite Program** - Provided 2,505 hours of Caregiver Counseling services to 343 people and 13,726.5 hours of Respite Services to 177 people.

**LSS Health and Wellness Fairs** - Provided health and wellness information at 38 health fairs to 2,444 persons.

**Legal Services** - Provided 521 hours of legal services to 413 persons and provided 28 Educational Sessions to 1,206 persons.

**Lakewood Home Health Aide Program** - Provided 505.75 hours of home health aide services to 7 persons.

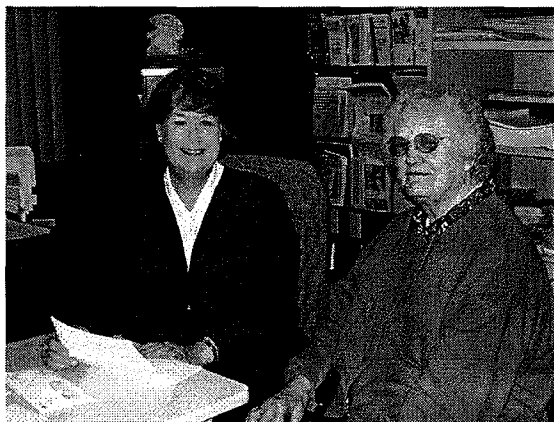
**Red Lake Homemaker Program** - Provided 713 hours of homemaker services to 15 persons.

**Clearwater Senior Transportation** - Provided 85 one-way trips to 41 persons.

**Beltrami County Frail/Elderly Home Modification** - Provided 115 hours of home modification services to 24 persons.

**LSS Senior Nutrition Program** - Provided 215,115 Congregate and 89,234 Home Delivered Meals to 11,517 persons.

*Right: Some of our SHIP Volunteers who recently attended a training session.*



*Above: Lois assists Esther with a Medicare Issue.*



*Right: Enjoying a meal at a Senior Center.*



# Arts

## NORTHWEST REGIONAL ARTS COUNCIL

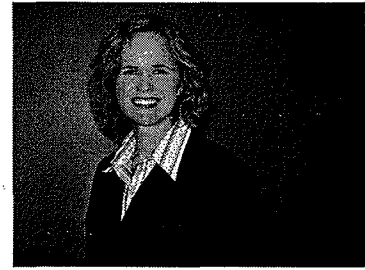
**Purpose:** To promote, develop and encourage artistic growth and excellence of arts organizations and individual artists in northwestern Minnesota by awarding funds and conducting programs and services.

**Program Funding Sources:** MN State Arts Board - \$64,453 and Interest - \$352; McKnight Foundation - \$12,489; RDC Tax Levy - \$13,985; Miscellaneous - \$3,030.

**Re-Grant Funding Sources:** MN State Arts Board - \$69,695; McKnight Foundation - \$18,515.

**Re-Grant Programs:** *State Funds:* Production Assistance/Sponsorship; Artist in the Schools. *McKnight Funds:* Individual and Student Artist Grants; Small Capital.

**Service Priorities:** Direction setting, grants to organizations, grants to individual and student artists, Northwest Minnesota Art Exhibit, information including website, newsletter, training/workshops.



Right: Mara Wittman,  
Arts Council Director

### McKnight Artist Grants •••

Five adult artists and eight student artists received awards this year. In the Individual Artist category \$6,000 was granted. In the Student Artist category \$3,850 was granted. Most awards were for technical training.

### Services and Technical Assistance

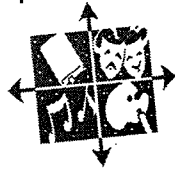
#### Web Site Development-Arts •••

Updated web pages for the arts to include on-line application forms, as well as downloadable pdf forms. Also added more information on arts organizations and artists. [www.nwrdc.org/arts.htm](http://www.nwrdc.org/arts.htm)

### Newsletter •••

Northwest Arts continued to provide a list of our grants, as well as opportunities for artists, schools and arts organizations. Three newsletters were printed and distributed to 950 arts constituents.

## Arts Highlights



### Grant Program Summaries

#### Production Assistance/Sponsorship •••

From July 1, 2004 - December 31, 2005, we re-granted \$51,235 to 16 different productions and 14 sponsorship projects throughout the region. Sixteen of the projects were specifically aimed at children. An estimated 23,800 adults attended and over 9,120 youth participated.

#### Artists in the Schools Grant Program •••

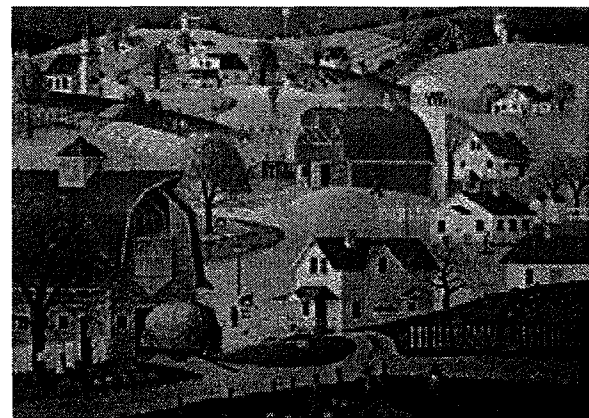
In the sixth year of this program plus 1/2 of year seven, \$17,090 was regranted to area schools. Thirteen projects were awarded serving 4,300 students. Nine additional projects applied for grants but were not funded due to lack of funds available.

#### Public Art Projects •••

Three installations and openings occurred in Warren at the community center, Florian Park, and the Occupational Development Center in Thief River Falls.

#### Small Capital Grants •••

\$8,165 was granted to arts organizations to purchase various items like camcorders, a sound shell, pianos, and TV monitors. Five organizations received awards.



### 2005 Northwest Artist of the Year •••

Gene Lysaker of Twin Valley was recognized for his life long devotion to the visual arts. Lysaker's paintings are well known in the area and throughout the midwest. He is best known for his wildlife and Americana style. His accomplishments include several hundred award winning original paintings, illustrations in three childrens books, teacher of painting classes, mentor for aspiring young painters, volunteer work as an arts advocate, and generous donator of time and materials back into the arts. His painting is featured above.

## Arts continued

### Arts Economic Impact Study •••

From November 2004 through November 2005 our office attended arts activities and festivals to collect and compile information on the economic impact arts has on our Northwest area. Arts and cultural organizations also completed a survey related to their impact on the area. Survey results will be officially released to the public in March of 2006. Our press session will be during the NW Regional Art Exhibition artist reception at the Hallock City Hall on March 27, 2006.

### Northwest Minnesota Art Exhibition •••

Coordinated 2005 exhibit in Ada at the Ada-Borup High School from April 20-24, 2005. This included the jury process, registration, hanging, and artist reception. 114 pieces were on display for almost a week. \$1,550.00 of awards were given to artists based on the recommendations of juror Gregg Wilimek of Bemidji.

### Northwest Minnesota Art Exhibition Awards:

#### Adult Award Winners

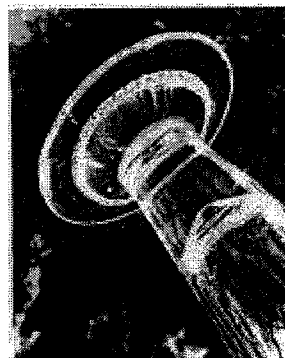
1st Prize: \$500.00: John Leopold, Thief River Falls: "St. Peter's Church: Apse End" Painting  
2nd Prize: \$250.00 Robin Foster, Red Lake Falls: "Untitled" Sculpture  
3rd Prize: \$100.00 Nick Reitzel, Karlstad: "Evening Ascent" Painting  
Merit - Drawing: \$50.00 Lisa Ruebke, Ada: "Autumn Grove"  
Merit - Painting: \$50.00 Sara Halvorson, Warroad: "Pogona!"  
Merit - Photography: \$50.00 Twylla Altepeter, Crookston: "Old Glory in Medora"  
Merit - Sculpture: \$50.00 Jerome Fuglseth, Fertile: "Deer"  
Merit - Print Making: \$50.00 Jeanne O'Neil, East Grand Forks: "Last Light"  
People's Choice: \$100.00 Loren Olson, Ada

#### High School Student Award Winners

1st Prize: \$150.00 Regina Osse, Warroad: "Maxed" 3-D Mixed Media  
2nd Prize: \$75.00 Tom Borowicz, Warren: "Peace" Drawing  
3rd Prize: \$50.00 Amanda Ross, Crookston: "Delicate Aurora" Photograph  
Merit - Drawing: \$25.00 Miranda Fox, Halstad: "Wind in His Hair"  
Merit - Painting: \$25.00 Rachel Huderle, Warren: "Afterglow"  
Merit - Sculpture: \$25.00 Sam Syroravongl, Warroad: "Bubble Eye Koi Fish"  
Merit - Print Making: \$25.00 Brittany Ryba, Warroad: "Unusually Colorful Trees"  
Merit - Digital: \$25.00 Marie Turgeon, Hallock: "Floating in Astral Plains"  
People's Choice: \$50.00 Miranda Fox, Halstad



John Leopold, Thief River Falls, received the first place adult for his painting (above); and (right) Loren Olson, Ada, received adult people's choice.



Miranda Fox, Halstad, received both people's choice and student drawing merit for her drawing (above), and (left) Regina Osse, Warroad, was the student first place winner, while (center) Amanda Ross, Crookston received 3rd prize student for her photograph.

## Arts Grants Listing . . .

### PRODUCTION ASSISTANCE July 2004 - June 2005

Sand Hill Settlement Hist. Society, Climax	\$2,000.00
Impressions Dance Company, Crookston	\$2,000.00
Crookston Community Theatre	\$2,000.00
Summer Arts STAGES, East Grand Forks	\$2,000.00
Fosston Library and Arts Center, Fosston	\$2,000.00
Middle River Community Theater	\$2,000.00
Middle River Community Theater	\$1,000.00
Two Rivers Area Theatre	\$2,000.00
Roseau Area Friends of the Library	\$2,000.00
Thief River Falls Arts Council	\$1,500.00
Thief River Falls Arts Council	\$1,500.00
Warroad Summer Theatre	\$2,000.00

### ARTIST IN THE SCHOOLS July 2004 - June 2005

Badger School	\$1,910.00
Norman County West Elementary, Hendrum	\$955.00
Tri-County School, Karlstad	\$2,000.00
Roseau Public Schools	\$1,100.00
Roseau Public School	\$1,100.00
Crookston Public Schools	\$750.00
Fertile Beltrami Public School	\$910.00
Kittson Central School District, Hallock	\$1,295.00

### SPONSORSHIP July 2004 - June 2005

Crookston Public Library	\$2,000.00
Summer Arts STAGES, East Grand Forks	\$1,000.00
AFRAN, Red Lake Falls	\$855.00
City of Red Lake Falls	\$1,125.00
Clayworks, Red Lake Falls	\$1,700.00
Roseau Convention Visitor's Bureau	\$725.00
Warren/Alvarado/Oslo Education Foundation	\$2,000.00

### SMALL CAPITAL July 2004 - December 2005

Valley Crossing Arts Council, Crookston	\$1,500.00
Summer Arts Stages, East Grand Forks	\$180.00
Fosston Library Arts Association	\$1,770.00
Middle River Community Theatre	\$1,215.00
Stephen Arts Council	\$2,000.00
Valley Crossing Arts Council, Crookston	\$1,500.00

### STUDENT ARTIST TRAINING MENTORSHIP July 2004 - December 2005

Kathryn LaBine, Argyle	\$500.00
Leigh Bailie, Fosston	\$500.00
Samantha Thibert, Red Lake Falls	\$500.00
Jacob Rakozy, Thief River Falls	\$500.00
Canda McGregor, Warren	\$500.00
Daphne George, Warroad	\$350.00
Beth Radeke, Argyle	\$500.00
Sadie Hart, Kennedy	\$500.00

### PRODUCTION ASSISTANCE July - Dec. 2005

Fosston Community Library Arts Center	\$2,000.00
Middle River Community Theater	\$2,000.00
Roseau Area Friends of the Library	\$1,770.00
Stephen Arts Council	\$1,600.00
Thief River Falls Arts Council	\$1,500.00
Warroad Summer Theater	\$2,000.00

### ARTIST IN THE SCHOOLS July - Dec. 2005

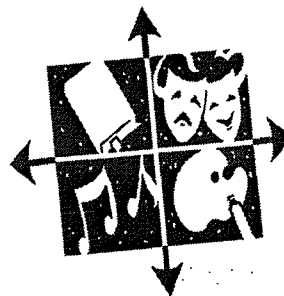
Crookston School	\$1,200.00
Red Lake County Central, Oklee	\$1,680.00
Red Lake Co. Central, Plummer	\$710.00
Stephen/Argyle School	\$1,500.00
Lincoln High School, Thief River Falls	\$2,000.00

### SPONSORSHIP July - Dec. 2005

Crookston Public Library	\$1,590.00
Summer Arts Stages, East Grand Forks	\$1,000.00
Summer Arts Stages, East Grand Forks	\$2,000.00
Greater Grand Forks Symphony Assoc.	\$2,000.00
City of Karlstad	\$1,795.00
Marshall County Fair, Warren	\$2,000.00

### ADULT ARTIST FELLOWSHIP July 2004 - December 2005

Mary Noel, Crookston	\$1,200.00
Karen Backlund, Hallock	\$1,200.00
Kelly Anderson, Oslo	\$1,200.00
Heidi Hoks, Thief River Falls	\$1,200.00
Kathryn Hammer, Roseau	\$1,200.00



# Economic Development

**Purpose:** To assist in the creation of new jobs by providing general planning guidance, technical assistance for specific industrial projects and services to local units of government.

**Program Funding Sources:** United States Economic Development Administration (EDA) - \$90,063; RDC Tax Levy - \$33,809; Miscellaneous - \$115.

**Service Priorities:** Regional Economic Analysis and Planning, Local Planning, Technical Assistance to Local Development Groups, Grant Writing, Business Counseling and Referral, Information on other Development Programs and Resources, Data and Statistics, and Tourism.

## *Economic Development Highlights*

### "Dealing with Growth is a New Experience for many Communities"

#### **Business Assistance •••**

Provided approximately 550 hours of technical assistance to businesses which resulted in the creation of 422 new jobs, \$1,608,575 in public investment, and \$20,984,300 in private sector investment. Specific projects are listed under the Loan Fund and JOBZ sections.

#### **Community Planning and Assistance •••**

Assisted Greenbush, Warren, and Rocksbury Township in the development of comprehensive plans and zoning ordinances. Provided on-site assistance to Fertile, Grygla, Norman County, Newfolden, Flom, Highland Township, Lengby, Halstad, Ada, Hallock and Oslo on community issues. Provided approximately 220 hours of other technical assistance to communities and community groups on development issues.

#### **St. Vincent Flood Protection •••**

Assisted the City to examine options for preserving and improving flood protection, including removal of the City from the 100 year floodplain. Completed an application to the legislature and the MNDNR for \$455,000 in funding to complete dike improvements.

#### **Roseau Flood Protection •••**

Continued providing staff support to the Roseau Area Flood Mitigation Task Force. Activities included a tour of the Warren flood control project, coordination of construction and funding request activities, and maintaining consensus on mitigation approaches.



**Economic/Community Development Staff**

*Above: Seated (left to right) Troy Schroeder, Transportation Planner, Cam Fanfulik, Loan Fund Manager. Standing (left to right) Jennifer Olson, Hazard Mitigation Planner, Leon Heath, Executive Director and Mara Wittman, Arts Council Director.*

#### **Ada Area Promotions •••**

Assisted in the development of strategies and funding applications for a program to attract new jobs and revise community economic development systems based on the "Business Ready Communities Concept".

#### **Community Training •••**

Organized a one day community training session related to tourism development and attracting new businesses. Thirty-four representatives of local government and development groups attended.

#### **Jobs and Careers Committee •••**

Provided staff support to the Jobs and Careers Subcommittee of the Enterprise Fund. The Committee assists with strategy development and setting staff work priorities. Priorities of the upcoming year will focus on improved communication between business and government, getting ahead of the curve on growth trends, and housing shortages.

#### **BRAC •••**

Assisted East Grand Forks in planning and completing funding applications related to possible base realignment at the Grand Forks Air Force Base. \$87,000 in funding approved. Issues will include development of unmanned aircraft and the transition of business affects by changes in the Base mission.

## *Economic Development Continued*

### **Greenbush and Central Boiler . . .**

Completed a housing needs survey and started a comprehensive planning process to assist Greenbush in addressing housing and work force issues related to the expansion of Central Boiler. The City is examining options for encouraging the development of a wide range of housing to serve a new and growing labor force.

### **Rocksbury Township Comprehensive Plan and Zoning Ordinance . . .**

Started development of a comprehensive plan and revisions to the township's zoning ordinance in relationship to growth pressure around Thief River Falls.

### **Hallock Loan Fund . . .**

Assisted the City in developing a proposal for funding to help businesses recover from economic stress related to flooding and poor agricultural conditions. The proposal will be considered during the 2006 legislative session.

### **MRDO . . .**

Participated in Minnesota Regional Development Organizations (MRDO) activities and initiatives. Work items over the past year included staff training, improved coordination with state wide organizations representing local units of government, and maintaining federal funding for economic development activities.

### **Green Routes Brochure for Northwest . . .**

Our staff worked with the Northwest Sustainable Partnership and the University of Minnesota to encourage retail stores, restaurants, and artist studio's to submit entry forms to be included in the Northwestern Green Routes brochure. Thirty locations that work to improve the environment, or are energy conscience will be featured. The four-color brochure will be printed and available throughout our region in the Spring of 2006.

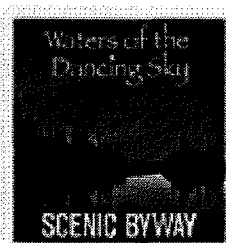
### **Congratulations Halstad . . .**

The City, Economic Development Authority, community groups, and local businesses successfully supported a proposal by Halstad Telephone for an ONVOY service call center. This will create at least forty new jobs and diversify the economic base of the area. NWRDC staff provided economic and labor force data for the proposal.

### **Development Strategies . . .**

Completed the 2006 update of the Comprehensive Economic Development Strategy (CEDS) and obtained approval of the seven County Boards. The CEDS describes changes in area demographics, including projected reversal of past population loss. Strategies include more emphasis on promoting the region, job creation in manufacturing and agricultural value added, and addressing housing shortages.

## **GIS Projects . . .**



The NWRDC continues to work with townships to update the road database within each county. The process involves recording township roads with the county recorder after holding public hearings and providing a map of the maintained and minimum maintenance township roads. Townships participating in the recording and map planning process for Norman County include: Flom, Hendrum, Lockhart, Good Hope, Lee, and Strand. Polk County township participants include: Columbia, Garden, Grand Forks, Huntsville, Reis, Farley, Garfield, Knute, and Hubbard. Marshall County Townships include: Viking, Agder, Marsh Grove, New Maine, Big Woods, Nelson Park, Veldt, West Valley, and Wright. Red Lake County Town-

ships include: Emardville, Lake Pleasant, and Lambert. Pennington County Townships include: Rocksbury, Silverton, North, Mayfield and Wyandotte. Roseau County Townships include: Lake, Malung, Mickinock, Moose, Moranville, Nereson, Polonia, Skagen, Spruce, and Stafford. Kittson County Townships include: Arveson, Davis, Hill, St. Vincent and St. Joseph.

The NWRDC is providing updated and reconfigured maps of the Waters of the Dancing Sky Scenic Byway. The scenic byway is restructuring to bring new insight into the promotional aspect of the byway. The byway travels from the Red River east of Hallock to USTH 59 south to Karlstad then east to International Falls on MNTH 11. This 195-mile byway travels through six state forests and numerous wildlife management areas that provide a chance to view wild elk, moose, bald eagles, and timberwolves. Lake Bronson, Hayes Lake, Zipple Bay and Franz Jevne State Parks offer visitors other recreational opportunities throughout the seasons. The RDC updated maps to include all these recreational opportunities.



# Community Development

## NORTHWEST REGIONAL DEVELOPMENT COMMISSION AND BOARD OF DIRECTORS

**Purpose:** Discuss and develop solutions to rural issues and problems which are held common in Northwest Minnesota.

**Funding Source:** Local Tax Levy - \$102,495; and interest \$14,844; Misc. - \$3,131.

**Service Priorities:** Consensus building, planning, research, information, new program development, legislative advocacy.

## Local Issues Highlights

### Community Assistance •••

Provided approximately 200 hours of assistance to communities on development planning and issues. Specific communities listed under Economic Development and Housing.

### Web Site Promotion of NW Minnesota •••

A revised home page enhances our website and provides easier access to all of its diverse sections. This year we actively promoted the Visit Northwest Minnesota website [VisitNWMinnesota.com](http://VisitNWMinnesota.com) with magnets, press releases and t-shirts. The seven county section continues to be updated annually with correct address information, census data and maps.

### Tourism Directory •••

Updated the 2005 version of the Northwest Minnesota Visitor and Recreation Guide. Published the guide to our [visitnwminnesota.com](http://visitnwminnesota.com) web site. Printed 800 copies of the 48 page guide for distribution.

### MN Historic Northwest •••

Our staff assisted this group in several of their projects including a group newsletter, a conference in Warren on increasing the number of visitors to your museum, and starting to create a joint web site. The group grew to include new representatives from throughout a nine county area in Northwestern Minnesota. Counties represented include Clearwater, Kittson, Lake of the Woods, Marshall, Norman, Pennington, Polk, Red Lake, Roseau. Other active groups other than the county historical society include East Grand Forks Heritage Center, East Polk County Heritage in Fosston, Goodridge Historical Society, Marvin Window's Museum, Association of the French of the North, Pembina RC&D, and Explore Minnesota Tourism. Other counties who have shown an interest in the group include Mahnommen, Beltrami, Clay, and Becker.

### Roseau Flood Mitigation Task Force •••

Provided staff support to the Task Force during the development and coordination of efforts to define and fund 100 year flood protection for the Community.

### GIS Activities •••

Participated in several geographic information system (GIS) and global positioning system (GPS) projects throughout the year. Projects included the development and updating of regional corridor maps that promotes NW Minnesota. Assisting counties in collection of critical infrastructure using GPS technology for hazard mitigation planning and creating several maps for each county. The FSA 2003 aerial photos were used as a basemap for planning documents in several communities in the region. Warren, Ada, Lengby, Roseau, Greenbush, Badger, Thief River Falls, Hallock, and county highway departments all used these maps to assist in planning.

### Land of the Dancing Sky Shopping Routes •••

Shopping and eating experiences along major routes became a focus this past year. Targeted local product items include meats, sweets, crafts, antiques and art. Visitors and local residents will be encouraged to tour our communities, see the local attractions and buy our food and treasures. Information is on our website at [www.visitnwminnesota.com](http://www.visitnwminnesota.com) under shopping. Routes highlighted include Waters of the Dancing Sky Scenic Byway; Prairie Passage; Pine to Prairie Birding Trail; and King of Trails.

**Meats and Sweets**  
**Ethnic Food Stops**  
*The Dining Experience*  
**Finer Things** Arts and Crafts  
**TREASURE HUNT** ANTIQUES  
**Worth a Stop Shop**

### Snowmobile Initiative •••

A meeting in Warren of representatives from seven area clubs, resulted in a consensus that a new updated map is needed for the region. In 2006, with the assistance of the NWRDC and DNR, the group will work to update the map using GPS trail information. GPS will allow the new map to precisely show the location of trails, both for safety and driver's ease of use can be created. The map will be used in the 2006 - 2007 snowmobile season.



## *Community Development Continued*

### **Norman County Tourism Group . . .**

Assisted in the reorganization of the Norman County Tourism Group by providing staff services and completing an interest survey. Projects defined by the group included formalization of the membership, web site development, updating the county brochure, and media advertising.

### **Warren Zoning Amendment . . .**

Assisted the City of Warren in examining existing zoning ordinances related to the need for future housing growth. Completed a mini planning process and started zoning revisions, including an examination of city boundary issues and limitations.

### **City of Oslo Web Site . . .**

Our staff provided some training at their office in using Front Page web site software. We assisted in the development of a basic site for the city.

### **Ada Chamber of Commerce . . .**

Helped the Ada Chamber of Commerce plan for the Solar Car Race to come through the area and what they might do to promote and encourage those participating to stop and shop or eat in Ada.

## **Township Road Recording**

The GIS department is producing aerial photo imagery maps for townships to assist in localized planning efforts, and provide updated maps with rural 911 addressing. The aerial township maps can be used by town boards to legally record township roads without the expense of a survey.

The Minnesota Legislature passed statute 164.35 in 2005 which defines alternative recordings for town roads. This statute authorizes a town board to adopt a recorded town road map under this section to record its town road easements. The GIS department is creating the maps at the standards to meet the legislative mapping requirements.

Several townships have recognized the need for an aerial photo of the township for meeting discussions and planning purposes. These aerial photos allow easy viewing for discussions concerning certain portions within the township. Contact Troy at the NWRDC if your township is interested in having a map created. The maps are laminated for extended life, re-useable for marking with high-lighters and can be purchased for \$100.

### **Homark Homes, Inc. - Red Lake Falls . . .**

Assisted City with zone modification to provide JOBZ benefits to Homark Homes, Inc. Provided NWRDC Loan Fund packaging assistance with other lenders to help fund projected new factory construction next to its existing facility. Provided JOBZ technical assistance with tax benefit calculation and other program incentives that will result in new jobs and \$2-4 million in capital investment.

### **May Corporation - Grygla . . .**

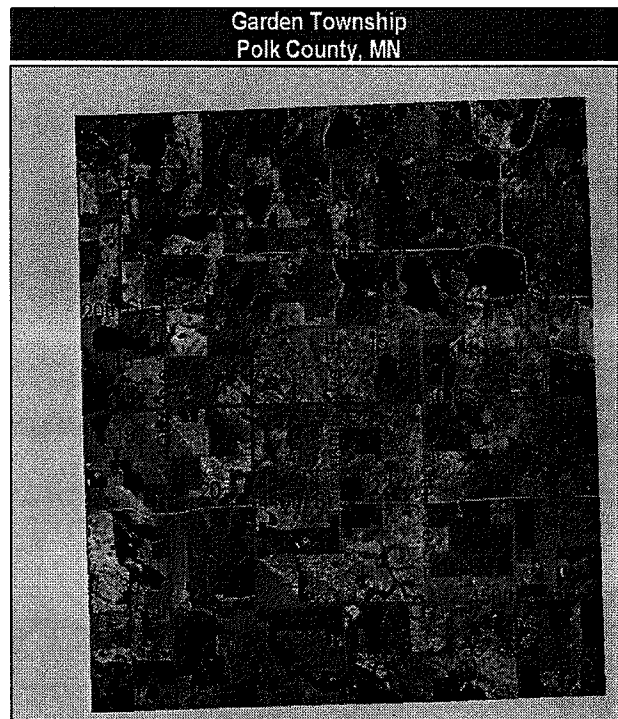
Participated with other lenders to furnish new funds to help May Corp meet new production demands for its chair products. Worked with business to form production alliances with other area manufacturers. May Corp will hire 2-5 new employees to meet contract goals.

### **Grand Theater - Crookston . . .**

Participated with Crookston EDA and area lenders to put together loan package that will keep the "longest continuously run movie theater in the country" as a part of the business community. The movie theater occupies an historic opera house with elaborate décor that has been a mainstay of the community for over 90 years.

### **Borderline Tire Industries, Inc. - Oslo . . .**

Assisted City with zone modification that will provide JOBZ tax benefits to a tire shredding and recycling company. Also provided loan packaging assistance that will create five new jobs and re-occupy a vacant industrial building on Main Street. The service will provide an outlet for used passenger car and truck tires to be used in road construction and power generation industries.



# Enterprise Loan Fund

**Purpose:** To strengthen and diversify the economy by providing a source of low interest financing to businesses, when credit is not otherwise available from other sources, to ensure the successful completion of activities to be financed.

**Program Funding Sources:** Loan Interest and Loan Fees - \$62,662; RDC Tax Levy - \$790.

**Loan Funding Sources:** Loan Repayments and Loan Interest - \$1,057,841.

**Service Priorities:** Financing for-profit businesses which create or retain jobs, especially for the long term underemployed or unemployed.

Loan Fund activities have played an integral role in financing several business start-ups and expansions over the past eighteen months. As the region and businesses continue to recover from past floods and agricultural disasters, there has been an increase of loans, loan requests, and technical assistance provided to clients throughout the area.

## New Loan Activity

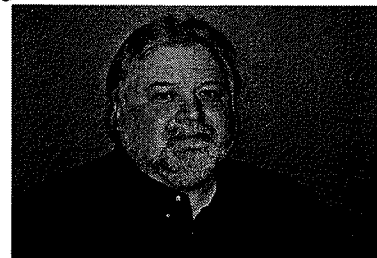
Loans made by NWRDC included funding for new start-ups in a wide variety of sectors:

- Hardware
- High-tech flight software
- Manufacturing/Metal fabrication & assembly
- Waste tire recycling
- Landscape/Nursery
- Entertainment
- Retail food and specialty
- Ag service

**Loans totaling \$1,051,750 were made to:**

Ditch Doctor, Inc.—Alvarado  
VTS, Inc.—East Grand Forks  
BMI Mfg., Inc.—Oslo  
McCollum Hardware, Inc.—Ada  
PoDCo, LLC.—Lancaster  
D&D Thomforde's Greenhouse and Garden Center, LLP.—Crookston  
Grand Theatre—Crookston  
Borderline Tire Industries, Inc.—Oslo  
B.I.L. Mfg., Inc.—Argyle  
Annie's Trading Post—Roseau  
A.A. Rantanen, Inc.—Thief River Falls  
McIntosh Bakery—McIntosh

Right: Cam Fanfulik,  
Loan Fund Manager



The NWRDC provides assistance during the loan application process and after the loan is approved. Loan Fund staff work with the business owner, area lenders, Small Business Development Center and other gap financiers to put together a financial package that increases the business owner's chances for sustainable, long-term success.

- Over fifty-five businesses and individuals received personal technical assistance.

## Historical Loan Activity

The following is a brief summary of total Loan Fund activity:

Total Number of Loans	137
Active Loans	53
Total Amount of Loans	\$8,532,073
Other Financing Leveraged	\$41,327,911
Jobs Created/Retained	1,427

## Enterprise Fund Committee

The Enterprise Fund Committee has undergone a transformation in order to provide a more focused approach to emerging issues in the region. Two special committees were formed to reflect the area's growing emphasis on economic development strategies:

1. Tourism/Local Issues
2. Jobs and Careers—Business Development

The committees provide support for community efforts to promote all positive aspects of our area and a focused approach to attracting outside business development, tourism, and new residents.

Promotion of "Business-Ready Communities" in the "Land of the Dancing Sky" represent positive changes taking place in quality of life issues, community response to business needs, and effectiveness of public-private partnerships for business growth.

# Hazard Mitigation

**Purpose:** To access local, state and federal hazard mitigation resources to eliminate or minimize harm done to people, property, jobs, natural resources and crops by natural and manmade hazards.

**Program Funding Sources:** MN Dept. of Public Safety - \$95,197; Inkind - \$15,479.

**Service Priorities:** Compose completed and adopted hazard mitigation plans for nine counties in Northwest Minnesota.



Above: Jennifer Olson, Hazard Mitigation Planner

## Hazard Mitigation Highlights

The Northwest Regional Development Commission (NWRDC) continues to make progress on comprehensive hazard mitigation plans for nine counties in Minnesota: Becker, Clay, Kittson, Marshall, Norman, Pennington, Polk, Red Lake and Roseau. Hazard mitigation activities ongoing in our region break the cycle of disaster/repair and make possible a more sustainable future. Often referred to as one of the cornerstones of emergency management, hazard mitigation progress can be seen in many different forms in Northwest Minnesota, including the removal of homes from floodplain areas, sheltering of vulnerable populations during storms/power outages, critical facility protection and future event exercises and planning. The created mitigation plans have the following information contained within:

- Detailed profiles of each county, including a demographic review and geographic analyzations.
- Identification of hazards, containing definitions and past occurrences.
- Analyzation of known risks, with frequency, magnitude, warning time, current mitigation strategies and severity all identified as factors.
- Responses to identified hazards, including mitigation recommendations and a detailed local action section.



Recent Subsidence Events in Red Lake Falls, Minnesota

Local hazard mitigation plans do not exclude any hazard that is deemed important by county officials and residents. Input taken into account has been given by residents, cities, counties, agencies, businesses, FEMA and the state of Minnesota. Progress can be seen in the following forms:

- The advancing production of all-hazard mitigation plans.
- Additional meetings with individuals interested in hazard mitigation.
- Raised awareness about mitigation problems and solutions in Northwest Minnesota.
- Increasing amounts of partnerships to solve large regional problems.
- Submission of plans to the state and federal levels for conditional approval status.

# Housing

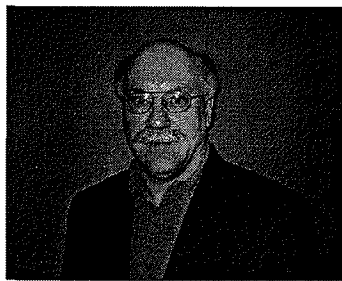
## HOUSING PROGRAM

**Purpose:** To increase the housing stock in the region.

**Program Funding Sources:** NW MN Foundation - \$16,342; RDC Tax Levy - \$9,099.

**Regrant Funding Sources:** MHFA Flood - \$866,986; MHFA CRV - \$495,000; Houses Sold Pay Back - \$847,825; ICWC - \$293,883.

**Service Priorities:** Assisting communities, lenders, consumers, and agencies to access available programs that repair, rehabilitate and build affordable homes.



Above: Leon Heath, Executive Director

## Housing Highlights

**“The gap between the cost of new housing and the housing budgets of new workers continues to grow.”**

### Community Assistance

Erskine (Housing Survey and needs assessment), Middle River (Community Planning), St. Vincent (Flood protection/100 year floodplain preventing housing development), Badger (Comprehensive Planning), Roseau (Flood protection for housing growth), Greenbush (Housing for new labor force needs), Fertile (Community Planning), Thief River Falls (TRF Area Housing Needs), Highlanding Township (Planning), Polk Centre Township (Comprehensive Planning), Sanders Township (Comprehensive Planning), Wyandotte Township (Planning), Crookston (Trailer Court revitalization), Lengby (Housing Development Planning and mapping), Oslo (new housing subdivision, planning, zoning), Newfolden (promoting housing for job growth in the area), Ada (New Housing Construction), Warren (New housing subdivision, planning, zoning), East Grand Forks (lower cost housing), and Stephen (funding for infrastructure improvements). Note: Some communities are served under multiple programs, depending on the set of issues.

### Housing Partnership

Continued the partnership with the Northwest Minnesota Foundation and the Headwaters Regional Development Commission to assist communities with the development of affordable housing. Provided added technical assistance to twenty cities and townships during the year.

### Housing Flood Administration

Continued partnership with Wynne Consulting to administer \$3,000,000 in housing flood recovery funds.

### ICWC Crew Administration

Completed partnership with Inter County Community Council (ICCC) to administer the Institutional Community Work Crew program for new housing construction and housing rehabilitation. ICCC assumed all administration and operation duties for the program as of July 1, 2005.

### New Housing Construction

Continued administration of \$1,333,000 in MHFA funding to construct new homes. Funding used by Inter County Community Council (ICCC), Northwest Multi-County Housing and Redevelopment Authority (NWHRA), Northwest Community Action Agency (NWCAA), Northwest Regional Development Commission (NWRDC), and Tri-Valley Opportunity Council (TVOC) to construct 34 new homes over the past six years.

### ROHDA

Provided staff support to the Region One Housing Development Alliance which includes ICCC, NWHRA, NWCAA, NWRDC, and TVOC. The group met three times during the year to coordinate services to individual communities, develop joint funding applications, and anticipate emerging housing needs as defined by local communities.

### RHAG

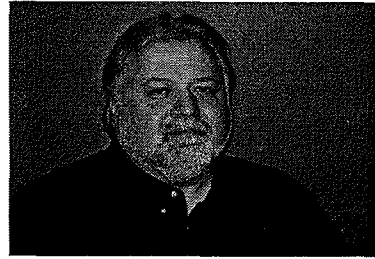
Provided staff support and participated in the Regional Housing Advisory Group (RHAG), which develops new housing programs and advocates for affordable housing in a 12 county area including Northwest and Headwaters development regions. The informal group membership includes local housing groups, state and federal funding sources, private foundations, and multi-county/regional housing development organizations.

### Housing Issues

During Discussions, meetings, funding applications, community planning/assistance, and project coordination activities; the issue of the affordability of new housing continued to shift it's way to the top.

# JOBZ

## Job Opportunity Building Zone (JOBZ) Administration



Above: Cam Fanfulik, Loan Fund Manager

Job Opportunity Building Zones (JOBZ) is a two year-old state initiative designed to stimulate business activity in rural, economically distressed areas of Minnesota. Eligible JOBZone businesses operate in an environment nearly free of local and state taxes for a maximum duration of twelve years, until December 31, 2015. The tax incentives will help new and expanding companies lower their overall costs, facilitate their growth, and create new jobs.

The NWRDC administers a seven county multi-jurisdictional JOBZone that includes 24 participating communities and 9 townships. JOBZ business expansions in 2005 resulted in over 50 new jobs and more than \$16 million in capital investment. Since the inception of the program in 2004, results have totaled more than \$22,300,000 of capital investment, over 150,000 sq. ft. of new building expansion, and more than 140 new jobs created.

### 2004 JOBZone Qualified Businesses:

- 1) 1<sup>st</sup> Mechanical, LLC. - Crookston
- 2) Hanson Mfg., Inc. - Lancaster
- 3) PoDCo, LLC. - Lancaster
- 4) QC Techniques, Inc. - Roseau
- 5) Central Boiler, Inc. - Greenbush (Deer Township)
- 6) Prac's Institute, Ltd. - East Grand Forks

### 2005 JOBZone Qualified Businesses:

- 1) Polaris Industries, Inc. - Roseau
- 2) BMI Mfg., Inc. - Oslo
- 3) Specialty Products & Technology, Inc. - Fosston
- 4) B.I.L. Mfg., Inc. - Argyle
- 5) Northland Machine, Inc. - McIntosh
- 6) FCS Ag Country - Ada
- 7) Borderline Tire Industries, Inc. - Oslo
- 8) Markit County Grain, LLC. - Argyle (Middle River Township)



In anticipation of prospective qualified businesses in 2005, zone modifications allotted JOBZ acreage to new sites in Middle River Township (Marshall County), Strand Township (Norman County), Badger Township (Polk County), Argyle, McIntosh, and Oslo.

The new year will see business start-ups, expansions and relocations continuing to take place with new jobs and capital investment planned for Red Lake Falls, Crookston, and Thief River Falls.

## Land of the Dancing Sky JOBZ Communities

Ada, Angus Township, Argyle, Badger, Badger Township, Barnett Township, Crookston, Deer Township, East Grand Forks, Emardville Township, Erskine, Fertile, Fosston, Greenbush, Hallock, Hendrum, Higdrem Township, Karlstad, Kennedy, Lake Bronson, Lancaster, Mayfield Township, McIntosh, Middle River Township, Oslo, Red Lake Falls, Roseau, Soler Township, Stephen, Strand Township, Thief River Falls, Twin Valley, and Warren.

# Special Projects

## LMIC

Funding Source: Land Management Information Center - \$3,750; RDC Tax Levy - \$593.

The NWRDC received a grant from the Department of Administration's Land Management Information Center (LMIC) to train regional GIS professionals in the collection and processing of metadata. This data is then posted on the LMIC metadata homepage for shapefiles to use in GIS shapefile searches. The Two Rivers Watershed District, Red Lake Watershed District, River Watch, and GIS students from the University of Minnesota-Crookston participated in the training course.

## GREATER EMS

Funding Source: Greater Northwest Emergency Medical Services - \$7,000; RDC Tax Levy - \$191.

The RDC mapped the Greater Northwest Emergency Medical Services Region. Each service area was provided a map with the 911 rural addressing on the map. Booklets were developed for each of the 26 responder units so the emergency crews can respond to accidents outside their normal service areas in cases of emergency. (See map below)

## USDA PROJECT

Funding Source: USDA - \$6,288; RDC Tax Levy - \$4,369; NW MN Foundation - \$5,030.

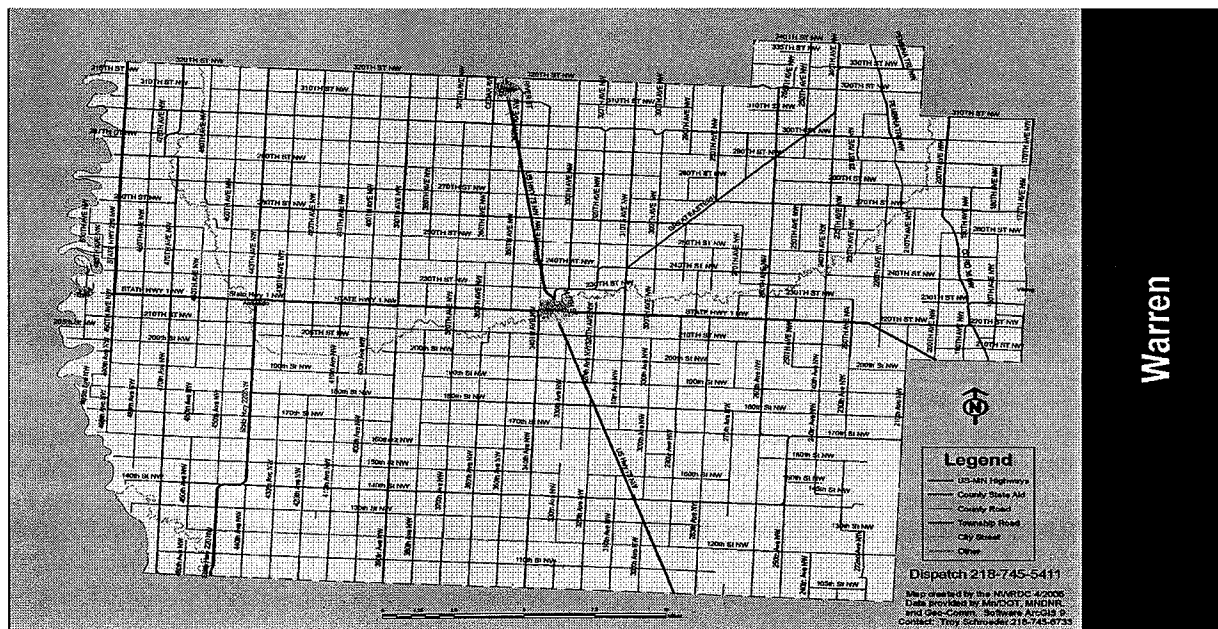
NWRDC received grants from USDA and NMF to provide technical assistance and staff support for ag value-added projects in the region. Staff provided grantwriting, data/statistics collection, mapping, and technical assistance regarding NWRDC Revolving Loan Fund and Mn JOBZ Program. The information was used as inputs in positive feasibility studies on biodiesel production, ethanol production, and methane digestion.

### Projects:

**Bio-Diesel:** Assisted Hallock development group with feasibility study information, crop production/freight transportation mapping, and technical assistance on financial packaging and JOBZ tax incentive program. Positive feasibility study results have prompted group to begin business planning stage for a biodiesel production facility in Hallock.

**Ethanol:** NWRDC staff provided grantwriting assistance, loan packaging information, and technical assistance on JOBZ Program for local development group in Polk County. Partnered with Crookston EDA to complete successful grant application to USDA for \$170,000 to fund ethanol feasibility study in the Erskine area. Project is moving forward with permitting and SEC registration for future investment and business planning stages.

**Methane Digestion:** Assisted Fosston with planning and completion of \$250,000 funding application to USDA for a municipal wastewater pre-treatment facility. Facility will treat wastewater effluent more effectively from neighboring food processors and add capacity.

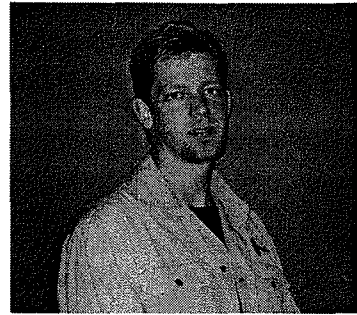


# Transportation

**Purpose:** To insure safe efficient movement of people and commodities in the region. Provide an ongoing forum for important transportation issues in the region. Assist Mn/DOT and provide input with it's planning efforts and programs.

**Funding Sources:** MN Department of Transportation \$75,210; RDC Tax Levy - \$15,203.

**Service Priorities:** Direction setting, comprehensive regional planning, legislative advocacy, MN/DOT project coordination.



Above: Troy Schroeder, Transportation Planner

## Transportation Highlights

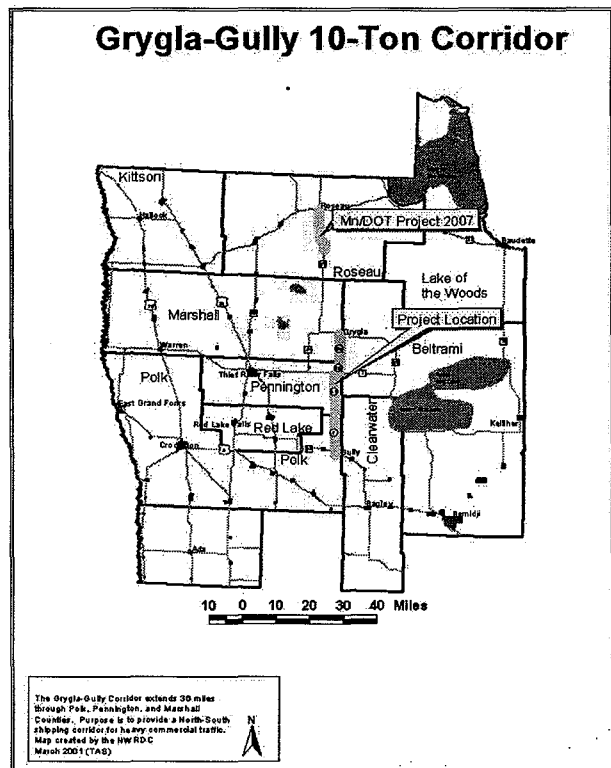
Every 6 years Congress re-authorizes spending for the nation's surface transportation needs. The current law SAFETEA-LU (Safe, Accountable, Flexible & Efficient Transportation Equity Act - a Legacy for Users), was signed into law by the President on August 10, 2005. This is the third iteration since Congress established the Inter Surface Transportation Act (ISTEA) in 1991. SAFETEA-LU was preceded by the Transportation Equity Act for the 21st Century (TEA-21) which expired on September 30th, 2003 and was extended 11 times during the life of the 108th & 109th Congress.

With passage of the new transportation bill came federal high priority project funding for two special projects in Region 1. The Grygla-Gully 10-Ton Corridor received \$6.4 million to reconstruct 36 miles of county road to 10-ton. The corridor traverses through Marshall, Pennington, and Polk Counties (see map) providing a direct north-south shipping corridor for heavy commercial vehicle traffic, saving industries millions of dollars in fuel expenses annually. East Grand Forks received \$960,000 to extend 13<sup>th</sup> street for safe movement of people and school buses for South Point Elementary School and Central Middle School. The congressional support from Congressman Peterson and Senator Coleman is greatly appreciated.

*Right: Construction on this 36-mile stretch of 10-ton county road will begin this spring. Mn/DOT is reconstructing MNTH 89 in 2007.*

Construction on the Grygla to Gully corridor begins in 2006, completion is planned for late 2006 or early 2007. Mn/DOT has advanced construction on MNTH 89 from Wannaska to Roseau in 2007. Completing this segment of roadway will provide a seamless stretch of 10-ton roadway from USTH 2 in Bagley to MNTH 11 in Roseau.

The counties will match the federal contribution at 20% plus the cost of engineering, design, utility relocates, and right of way acquisition. Total project cost is \$11.2 million. More information is available by contacting Troy Schroeder at the NWRDC 218-745-6733.





## Transportation Continued

Created a regional map illustrating the existing 10-ton county state aid highways (CSAH) system with the state 10-ton trunk highway system. The county engineers solicited a map to the RDC with a proposed 10-ton CSAH system that will serve the needs of their county constituents. The RDC designed that map into one that promotes continuity of a 10-ton system from county line to county line. This information was provided to Mn/DOT personnel in the Mn/DOT office of investment management. Legislative bonding will be sought to continue construction on the county system.

Residents from North Dakota and Minnesota have been pursuing a new Red River bridge at Drayton and Robin for over 20-years. The RDC has assisted with public meetings and gathered information to see this project become a reality. A bridge spanning over 4,000 feet is planned for construction in 2009. North Dakota received \$6 million from high priority project federal money and Minnesota will use a central pot of state transportation funds to pay for the \$31 million project. See picture to the right.

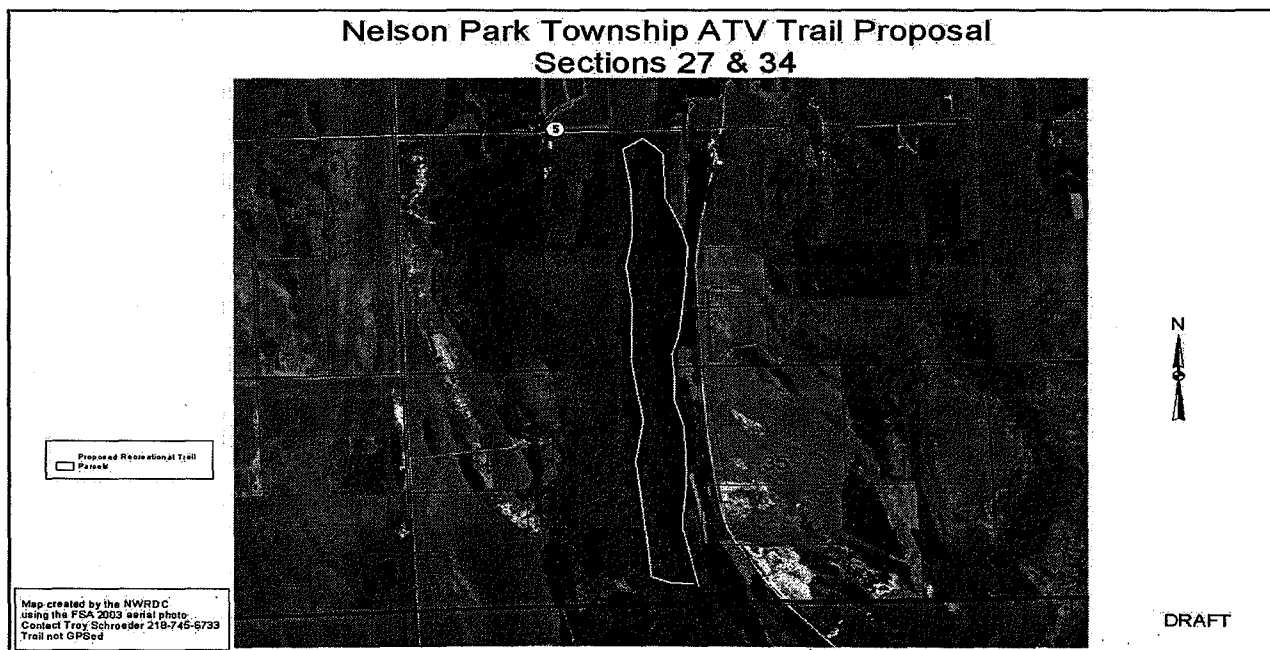
ATV trail development in NW Minnesota is still being pursued by local clubs. Two trail proposals are being studied in Marshall County, one in Pennington County, one in Kittson County, and one in Roseau County. The Minnesota DNR is leaving the Beltrami State Forest as managed, which will allow trails to remain open unless posted closed. The Beltrami Forest has opportunity for the development of recreational trails to satisfy all types of recreational interests.

Organized and facilitated a bridge summit with local and state representation from Minnesota and North Dakota. The summit was held in conjunction with the Transportation Advisory Committee's Bridge group. This summit gave both states the opportunity to discuss needs and future plans for the Red River bridge crossings. There are five bridge projects scheduled on the Red River system in the next four years. A new bridge will be constructed on MNTH 171 east of St. Vincent in 2006. A new bridge is planned for construction at the Drayton bridge in 2009. Norman County plans to replace the Shelly Bridge in 2006 and the Perley Bridge in 2007. The Thompson Bridge in Polk County also needs replacement; however, funding hasn't been secured.



Above: This bridge at Drayton/Robbin will be replaced with a new 4,000 foot bridge in 2009. Construction cost estimated at \$31 million.

Below: Here is the proposed ATV Trail System in Nelson Park Township, Marshall County. Plans include linking this segment with the Laymon Pit Project in Viking Township.





# Plans, Studies and Publications

Prepared by NWRDC

## Plans

**Area Plan on Aging** - The Area Plan on Aging examines senior input and demographic data to establish priorities for the use of Title III Older Americans Act funds. Includes budget information, an Executive Summary and work activities.

**FY 2005 Work Program** - Details the goals and objectives of the Commission in each of the program and planning areas.

**2006 Comprehensive Economic Development Strategy (CEDs)** - This document examines economic, social, and physical information about the seven counties in Northwest Minnesota and makes recommendations on activities to enhance and improve the economy. The recommendations concentrate on job creation, promotion, agriculture, and housing which can help address population loss.

**Regional Arts Plans** - Goals, strategies and work activities for State Arts Funds and McKnight Arts Funds are included in these plans.

**Revolving Loan Fund Plan** - Describes the program elements and guidelines for the loan fund. Updated in 2000.

**RDC Transportation Plan** - The RDC regional plan focuses on issues that have the largest impact on the stakeholders of Northwestern Minnesota to provide a smooth integrated transportation system. Information and documents from the plan will be used to assist Mn/DOT in the development of the district 20 year plan.

## Studies

**Red River Bridge Study** - The Transportation Advisory Committee has formed a subcommittee to study the economic impacts and importance the Red River bridge crossings have on the region. Results of the study will be presented to Mn/DOT for future planning.

## Publications

**Directory of Artists and Arts Organizations** - The directory contains listings of regional artists, arts organizations, school district offices and public libraries. Published online at [www.nwrdc.org/arts.htm](http://www.nwrdc.org/arts.htm).

**Directory of Government Units of Service Agencies** - The directory contains listings of service agencies and governmental offices from the township level through the legislative level.

**FY 2003 Annual Report** - Information on the funding and work activities of the Commission over the past year. Published and distributed to local officials and legislators.

**Northwest Arts** - Newsletter developed for the artists, arts organizations and schools in northwest Minnesota.

**Senior News** - Newsletter developed for the Senior Citizens and service providers of Region One, Two and Four.

**www.nwrdc.org** - Published updates of program information changes to our agency website.

**www.visitnwminnesota.com** - Web site devoted to the services, resources and recreational opportunities of our seven counties. Includes an on-line version of the Northwest Minnesota Visitor & Recreation Guide. Shopping, Land of the Dancing Sky Info. and JOB'Z Info.

**Northwest Minnesota Visitor and Recreation Guide** - A comprehensive listing of attractions and facilities which offer opportunities and services to local and outside visitors to area communities.

# Committee Membership List

## Region 1 Aging Advisory Committee

Terence Blacklance	Thief River Falls
Bob Carlson	Thief River Falls
* Richard Dahlin	Ada
Allan Ducharme	Red Lake Falls
Matthew Edman	Alvarado
Jamie Hennen	Ada
Gerald Jacobson	Fertile
Roy Jorgenson	Thief River Falls
Charles Lindberg	Kennedy
Warren Olson	Halstad
Julie Pahlen	Roseau
Orris Rasmussen	Roseau
LeRoy Vonasek	Warren
Ronald Weiss	Red Lake Falls
Betty Younggren	Hallock

## Region 2 Aging Advisory Committee

Karen Ahmann	Mahnomen
Ann Daley	Bemidji
* Dick Devine	Park Rapids
Vicki Haugen	Bemidji
Raymer Hoyum	Kelliher
W. Patrick Johnson	Clearbrook
Kathy Judkins	Bemidji
Ruby LaVoy	Mahnomen
Lucille Muller	Laporte
John Nelson	Clearbrook
Gerald Protector	Park Rapids
Jean Radtke	Mahnomen
George Swentik	Baudette
Nancy Wendler	Baudette

## Regional Arts Council

Jane Anderson	Thief River Falls
Karen Bang	Erskine
Paulette Christianson	Badger
Amy Filpula	Middle River
Betty Halvorson	Plummer
Alice Hofstad	Plummer
Barbara Ingman	McIntosh
* Kimberley Johnson	Kennedy
Gen Knott	Red Lake Falls
Kristi Kramlich	Ada
Honey Olson	Ada
Betty Pikop	Stephen
Cindy Tsukichi	Thief River Falls
Joyce Wikstrom	Karlstad

## Transportation Advisory Committee

Milton Alm	Norman County
John Anderson	Kittson County
Lon Aune	Marshall County
Kelly Bengtson	Kittson County
Sharon Bring	Marshall County
Mike Flaagan	Pennington County
Marvin Gunderson	Norman County
* Donald Jensen	Pennington County
Alan Johnston	Roseau County
Brian Ketring	Roseau County
Courtney Kleven	Red Lake County
Jeff Langan	Marshall County
Bob Marvin	Roseau County
Ed Miller	Norman County
Lee Nielson	Red Lake County
Rich Sanders	Polk County
Warren Strandell	Polk County
Ronald Weiss	Red Lake County

## Bridge Subcommittee

Milton Alm	Norman County
Kelly Bengtson	Kittson County
Sharon Bring	Marshall County
Curtis Carlson	Marshall County
Jeff Langan	Marshall County
Warren Strandell	Polk County

## Enterprise Fund

Eugene Dufault	Crookston
Liz Valdez	Crookston

## Loan Fund Committee

* Randall Aarestad	Halstad
Reed Engelstad	Red Lake Falls
James Herdliska	Erskine
Gary Rice	Hallock
Doug Safar	Warren
Ray Safranski	Thief River Falls
Carol Turnow	Roseau

## Job & Career Committee

Al Leiran	Ada
Duane Lyberg	Hallock
Bill Montague	Crookston
Velma Oakland	Red Lake Falls
Jim Richter	East Grand Forks
James Snyder	Thief River Falls
Dean Vikan	Fosston

## Promotions Committee

Delores Adkins	Ada
Mary Follett	Thief River Falls
Sandra Hapka	Warren
Pam Heeten	Roseau
Ann Piersol	Red Lake Falls
Jim Thomasson	Mentor
Ethel Thorlacious	Stephen

\*Chair

# Drees, Risky & Vallager, Ltd.

*Certified Public Accountants*  
117 South Broadway  
Crookston, Minnesota 56716  
Telephone (218) 281-3789  
FAX (218) 281-5245

## INDEPENDENT AUDITORS' REPORT

Board of Directors  
Northwest Regional Development Commission  
Warren, Minnesota 56762

We have audited the accompanying financial statements of the governmental activities, the major fund, and the aggregate remaining fund information of the Northwest Regional Development Commission as of and for the year ended June 30, 2004, which collectively comprise the Commission's basic financial statements as listed in the table of contents. These financial statements are the responsibility of Northwest Regional Development Commission's management. Our responsibility is to express opinions on these financial statements based on our audit.

We conducted our audit in accordance with auditing standards generally accepted in the United States of America. Those standards require that we plan and perform the audit to obtain reasonable assurance about whether the financial statements are free of material misstatement. An audit includes examining, on a test basis, evidence supporting the amounts and disclosures in the financial statements. An audit also includes assessing the accounting principles used and significant estimates made by management, as well as evaluating the overall financial statement presentation. We believe that our audit provides a reasonable basis for our opinions.

In our opinion, the financial statements referred to above present fairly, in all material respects, the respective financial position of the governmental activities, the major fund, and the aggregate remaining fund information of the Northwest Regional Development Authority as of June 30, 2004 and the respective changes in financial position for the year then ended in conformity with accounting principles generally accepted in the United States of America.

As described in Note 1, the City has implemented a new financial reporting model, as required by the provisions of GASB Statement No. 34, Basic Financial Statements—and Management's Discussion and Analysis—for State and Local Governments, as of June 30, 2004.

The management's discussion and analysis and budgetary comparison information on pages 5 through 10 and page 24, respectively, are not a required part of the basic financial statements but are supplementary information required by accounting principles generally accepted in the United States of America. We have applied certain limited procedures, which consisted principally of inquiries of management regarding the methods of measurement and presentation of the required supplementary information. However, we did not audit the information and express no opinion on it.

Our audit was conducted for the purpose of forming opinions on the financial statements that collectively comprise the Northwest Regional Development Commission's basic financial statements. The other supplementary information presented for purposes of additional analysis and are not a required part of the basic financial statements. The accompanying Schedule of Expenditures of Federal Awards is presented for purposes of additional analysis as required by U.S. Office of Management and Budget Circular A-133, *Audits of States, Local Governments and Non-Profit Organizations*, and is also not a required part of the basic financial statements of the Northwest Regional Development Commission. Such information has been subjected to the auditing procedures applied in the audit of the basic financial statements and, in our opinion, are fairly stated in all material respects in relation to the basic financial statements taken as a whole.

DREES, RISKEY & VALLAGER, LTD.

*Drees, Risky + Vallager, Ltd.*  
Certified Public Accountants

October 25, 2004  
Crookston, Minnesota

*Members of National Associated CPA Firms  
Members of Minnesota and North Dakota Society of CPA's  
Members of American Institute of Certified Public Accountants*

Northwest Regional Development Commission  
115 South Main, Suite 1  
Warren, MN 56762

Pre-Sort Standard

**U.S. Postage  
Paid**

Permit No. 37  
Warren,  
MN 56762