

06 - 0642



Final Report
For Fiscal Year 2006
(July 1, 2005 - June 30, 2006)

Submitted to the
Minnesota State Arts Board
September 28, 2006

BRENDA FLINTROP, EXECUTIVE DIRECTOR

111 2nd Avenue NE, Waseca, MN 56093
(800) 298-1254 or (507) 833-8721
plrac@hickorytech.net - www.plrac.org

Table of Contents

Mission Statement and Regional Update	2
Goals and Objectives	
I. <u>Service Goal</u>	3
A. To encourage participation through an active arts council.	
B. To provide assistance to local arts organizations and artists to help them reach their goals.	
C. To provide arts information to the general public.	
D. To provide fiscal and program accountability to the State Legislature and the Minnesota State Arts Board.	
II. <u>Program Goal</u>	4
A. To provide information to the arts council for grant review and design of future programs and services for artists and organizations.	
B. To assess grant funding and organizations served.	
C. To complete a needs assessment survey of arts organizations and artists.	
III. <u>Grants Goal</u>	7
A. To encourage all forms of art in the region.	
* Awarded 80 grants totaling \$91,070 (State \$67,000 & McKnight \$24,070)	
* Ten Percent for Children Legislation	
B. To seek additional art funds.	
C. To promote and fund rural arts activities in all of the region's communities.	
FY 2006 Grantees List	8
Monitoring and Evaluation of Grants	10
Staffing and Board of Directors	11
<u>Attachments:</u>	
1 PLRAC Newsletter	
2 - 3 State Grant Guidelines and Applications	
4 Financial Reports, unaudited (6-30-06)	

MISSION STATEMENT

The Prairie Lakes Regional Arts Council is a group of dedicated professionals committed to supporting, nurturing and expanding the arts; knowing that the arts improve the quality of life in our region. Our purpose is to provide promotion, technical and developmental assistance and grants to non-profit arts organizations, community groups, schools and individual artists. The nine counties served are: Blue Earth, Brown, Faribault, LeSueur, Nicollet, Martin, Sibley, Waseca and Watonwan.

CORE VALUES

We value: Open Mindedness, Equality of All Art Disciplines, Promotion of Artistic Excellence, Accessibility to the Arts, Availability to Our Constituents, and Maximization of Constituents' Potential.

REGIONAL UPDATE

In the past population shifts have affected the availability of funding for arts experiences, since a major component of the regional funding, and the RAC Forum funding formula, is based on population. The 2000 Census Data identified 222,790 people living in the Region 9 area. This was only a 3% growth rate since the 1990 census. The nine-county area we serve is Blue Earth, Brown, Faribault, LeSueur, Martin, Nicollet, Sibley, Waseca and Watonwan. Blue Earth County remains the most populated county in the region with 55,941 residents. No other county has more than 30,000 people. The least populated county is Watonwan with 11,876 people. Mankato is the largest central city in the region with a population of 32,427. Three cities with populations over 10,000 include: Fairmont (10,889), New Ulm (13,594) and North Mankato (11,798). Two communities approaching this size include St. Peter (9,747) and Waseca (9,611). Four mid-size towns having populations ranging from 3,500 – 4,600 are St. James, LeSueur, Blue Earth and Sleepy Eye. The majority of other small towns range in size from 250 – 2,500 on average.

Small towns tend to focus on local events at the school, sporting events, and community concerts and plays. Many of the arts organizations in the region have been serving their communities for years. Thus, they may have received grants from the regional arts council for several years. Some arts activities are concentrated in the population hub cities of Mankato, North Mankato and St. Peter. However, many art organizations and community groups in out lying towns are sponsoring arts events.

In assessing the number and types of art projects funded it is evident that several art disciplines are served more with our state funded grants. In Region Nine we are fortunate to have a large variety of musical organizations and activities, both vocal and instrumental. This represents the largest art discipline we review and fund through grant applications (about 50%). In a given year, the board will review about 85-90 applications. Theater performances compose about 20% of all funded activities and so do visual art projects and exhibitions, at 20%. Dance and literature projects are less common and represent about 5% each. Under-served areas continue to be dance, literature, visual art, media art and ethnic music and dance.

Several trends in the region have affected the availability of arts experiences for the residents. Small communities face obstacles as they struggle to improve their quality of life through the arts. There is a lack of recognition for existing arts organizations and difficulty in building an audience; there are only a few adequate facilities for performances and exhibits; limited public and private funding; lower family income; limited awareness of opportunities outside the community; and limited access to high quality, culturally diverse arts experiences due to lengthy travel time and lack of public transportation.

GOALS AND OBJECTIVES

As defined in the Prairie Lakes Regional Arts Council's Biennial Plan for FY 2006 and 2007, the council's goals are identified in three categories: service, program and grants. The service goal is to increase the visibility of the arts and to ensure proper use of state and foundation funding in the region by encouraging citizen participation, providing technical assistance, planning, public information and administrative assistance. The program goal is to provide information and education to the council to help them address their own development. The grants goal is to provide a variety of funding opportunities which will promote artistic growth opportunities, organizational development, and exposure to quality arts experiences.

I. Service Goal

- A. To encourage participation through an active arts council. The Prairie Lakes Regional Arts Council Board held nine meetings in FY 2006. Our annual meeting was held in August 2005. Board members continue to advocate for state arts funding by contacting their local legislators throughout the year. Several board members and staff attended Arts Advocacy Day at the State Capitol in March 2006. Board members are familiar with arts activities in their community and county and are required to attend several PLRAC funded activities each year.
- B. To provide assistance to local arts organizations and artists to help them reach their goals. Brenda Flintrop, the Executive Director of Prairie Lakes provided technical assistance to several arts organizations and community groups for grant writing and organizational development throughout the year. Although many groups are becoming more structured, efficient and professional, some are experiencing board burn out, reduction in volunteers and economic decline in their communities. Small communities are losing businesses and jobs which affects participation and funding for arts activities. Several groups needed staff assistance regarding developing arts programs, coordination of activities within a community and formalizing their organizational structure.

In August 2005 Flintrop facilitated a Grant Writing Workshop for Artists; discussing the PLRAC/McKnight Emerging Artist grants for \$1,000. The PLRAC artist workshops encourage artists to make their first ever grant application. The personal interaction with artists enables them to understand how important it is to describe a project which will advance their career and professionalism. Also, the project must be completed within a year. A majority of applicants who attend a workshop, or seek staff technical assistance are successful in obtaining a grant. Flintrop also presented a Grant Writing Workshop for non-profit arts organizations & community groups in August 2005 for organizations applying for fall Art Project and PLRAC/McKnight Capital grants.

- C. To provide arts information to the general public. The printed quarterly newsletter was discontinued in FY 2004, due to budget cuts. It still is an excellent tool to communicate with our constituents, and therefore we have continued to create a newsletter, but it is only posted on our website. We have created an email database of constituents which is used to notify them that a new newsletter is posted. The simplified newsletter includes general information about the council, PLRAC grant programs and recipients, and local arts calendar of events. It also includes a form for groups to submit information for the arts calendar. The newsletters can be viewed on our website at www.plrac.org and the Summer/July 2006 Newsletter is included. (Attachment 1) The council is committed to increasing publicity for arts organizations. As noted above, grantees are included in the quarterly newsletter and by news releases submitted to the local media. The

printed quarterly newsletter was discontinued. However, one printed newsletter was possible in July courtesy of an Insty Prints Grant, which was available to local non-profit groups. We were very pleased with this donation and our constituents were also very grateful.

After the fall and spring Art Project Grant Rounds we organize a photo session for grantees. Photos are sent to each group's local news paper announcing the grant award and other media also receive the news release. This has proven to be very successful. Many small town newspapers have included the photograph and grantees clip the newspaper article and photograph and send them to Prairie Lakes with their Final Report Form.

Staff has continued to update the entire mailing list, which is about 1500. In July 2005 we again asked constituents to send us their email addresses, so we could keep in touch with them and also let them know when we post future newsletters. There is a separate database of artists and arts organizations, schools and teacher contacts. The database for each of these categories is currently at: 430 Arts Organizations and Community Groups; 789 Artists; and 300 Schools. A printed version is available upon request to constituents. Staff has responded to many calls for program information and assisted people in locating other statewide arts funding agencies and resources.

- D. To provide fiscal and program accountability to the State Legislature and the Minnesota State Arts Board. The FY 2006 – 07 Biennial Plan was submitted to the MSAB on 5/15/05. A Final Report for FY 2005 was submitted 8/28/05. Financial reports are prepared using the QuickBooks program and reviewed at board meetings. Our operating expenses are broken down into program and general support expenses and we have a chart of accounts that identifies State and McKnight revenue and expenses. The audit for FY 2006 will be available in October 2006 from Larson, Allen, Weishair & Co., LLP, Waseca. An un-audited financial statement dated 6/30/06 is included. (Attachment 4) All state funds are encumbered as grants and are listed as an Accounts Payable.

II. Program Goal

- A. To provide information to the arts council for grant review and design of future programs and services for the local artists and arts organizations. Prairie Lakes conducts a needs assessment every four years to provide an accurate and comprehensive understanding of the characteristics of the region, as they relate to the arts, and to identify needs and problems that may be addressed by our regional arts council. We conducted our Needs Assessment Survey in November 2004.
- B. To assess grant funding and organizations served. In assessing the number and types of art projects funded it is evident that several art disciplines are served more with state funded grants. In Region Nine we are fortunate to have a large variety of musical organizations and activities, both vocal and instrumental. This represents the largest art discipline we review and fund through grant applications (about 50%). Theater and visual art activities exist but are less available in all communities. In a given year, the board will review over 100 applications and theater and visual art projects each represent about 15-20% of the total. Dance and literature projects are less common and represent about 5% each. Under-served areas continue to be dance, literature, media art and ethnic music and dance. Grant maximums have been reduced in the Art Project Grant Program from \$2,700 to \$2,000 since 2004. The board philosophy is that the maximum needs to remain at \$2,000 in order to equitably fund the 45-50 applicants that normally apply in this grant round. With decreased state funding the board has responded by reducing general administrative expenses, reducing the grant programs and eliminating the printed quarterly newsletter.

Summary of state funding for Prairie Lakes Regional Art Council:

FY 1999 - \$216,758	FY 2002 - \$208,170	FY 2004 & 2005 - \$142,442
FY 2000 & 2001 - \$213,612	FY 2003 - \$199,844	FY 2006 - \$143,175

In FY 2006 Prairie Lakes awarded 80 grants for a total of \$91,070 (State funds \$67,000 & McKnight \$24,070). The grants ranged in size from \$320 - \$2,000; and about 37% of those activities focused on youth. Art Project grants \$64,080; Small Arts and Arts-In-Education \$13,490; McKnight/PLRAC Capital \$4,500; and McKnight/PLRAC Artist Grants \$9,000.

- C. To complete a needs assessment survey of arts organizations, community groups and artists. A total of 1017 surveys were sent out to individual artists, arts organizations and community groups that produce or sponsor arts activities in the nine county area. Using the current Prairie Lakes Arts Council database, 800 Artist Surveys were sent and 104 were returned (13% response). A total of 217 organization surveys were sent and 44 were returned (20% response). As an incentive for returning the survey Prairie Lakes offered gift certificates for artists and organizations. All surveys returned were put into two separate drawings to receive the certificates. Artists could win a \$25 gift certificate to an art supply store (6 @ \$25 each) and organizations could win a \$50 publicity certificate to a local newspaper (3 @ \$50 each).

Of the groups responding to the organization survey, 40% identified themselves as an arts organization and 39% as a community group. A majority of the organizations have been in existence for over 20 years (56%), while only 18% are under 10 years old. Regarding their activities, 23% produce their own events, 25% sponsor or present an event and 41% of the organizations do both producing and sponsoring of arts activities. Arts Organizations and Community Groups were asked if the reduced state funding to PLRAC and its programs had affected their organization; 66% responded yes and 27% responded no. How it affected them was broken down into categories. Primarily organizations said they will have to increase: membership/registration fees 32%, ticket prices 27%, and other 9% (a variety of items were listed). Reductions were more varied and are listed below. **The organizations said they had to reduce:**

- | | |
|---------------------------------------|----------------------------|
| ♦ Publicity 30% | ♦ Scholarships 14% |
| ♦ Programming 18% | ♦ Other (items listed) 14% |
| ♦ Pay to director, organist, etc. 16% | ♦ Classes 7% |
| ♦ Number of performances 14% | ♦ Staff 7% |

Organizations were asked which grant programs/services they participated in and those ranking the highest were: 64% Sponsorship/Production Art Project, 18% Small Arts Project, 11% Arts-In-Education, 11% McKnight Art Project, 14% McKnight Capital, and 16% PLRAC Newsletter. The Operating Support grant was discontinued a couple years ago, but when asked 64% noted that it would help their organization and should be re-instated, along with 39% expressing support for a new Community Arts Education Partnership grant between schools and local arts organizations.

Organizations were asked what additional needs they have (frequent, occasional or no need) for a variety of development topics: Promotion and Marketing, Board & Volunteer Needs, Activity Planning, Coordination with other Organizations, and Technical Assistance. **A majority of those responding said they Occasionally Needed assistance with all of these topics.** Those listed as frequently needed, which seemed significant were: 55% increase audiences, 41% seeking business

donations, 39% fundraising projects, 32% increasing earned income, 23% co-sponsoring events, 20% grant writing and 20% working with the media.

They were also asked what are the main obstacles to arts development in our region and the top five items were: 18% Insufficient public awareness regarding the positive economic effects of arts on a community, 15% Lack of public awareness as to the necessity of the arts in all our lives, 13% Insufficient foundation and corporate funding in the region, 12% The current economic situation of our region and local communities, and 11% Shortage of media coverage, local, regional and statewide.

New information was gathered on this survey regarding the use of the internet to obtain information. With the reduction in state funding we have relied more on the internet as a method to contact organizations and provide them with updated information. Although 84% said they had access to the internet and 73% have an email account, only 30% go on-line daily, 20% weekly and 20% monthly. Of those responding to the survey 66% have visited our website, 54% have downloaded an application form, but only 32% have looked at our on-line newsletter.

The Artist Survey provides valuable background information regarding artists' discipline, years of experience and training, exhibition and sales in the area. The level of participation in PLRAC sponsored programs and services were very good. About 59% of the artists responding to the survey said they've participated in the Regional Juried Art Exhibition, 23% in the Individual Arts Project Grant Program and 24% in a PLRAC grant writing workshop. Many artists also added comments on their survey form regarding suggestions for the regional art exhibition, reinstating a printed copy of the newsletter, and expressed positive support and praise for PLRAC's past efforts for artists.

Of the artists responding, 46% identified themselves as an emerging artist, 27% an established professional artist, and 22% hobbyist. Of those responding, 71% were female, 52% were age 40-59, and 33% were arts educators. The discipline breakdown was: 73% visual art, 10% music, 4% literature, 1% dance and 8% other. Artists supported the continuance of the regional art exhibition, artist project grants and workshops. Workshop topics that ranked the highest include 36% exhibition opportunities, 18% personal promotional skills-marketing, 18% creating a website and 16% grant writing.

New information was gathered on this survey regarding the use of the internet to obtain information. With the reduction in state funding we have relied more on the internet as a method to contact artists and provide them with updated information. Although 82% said they had access to the internet and 71% have an email account, only 47% go on-line daily (which is a higher percentage than the organizations), 23% weekly and 10% monthly. Of those responding to the survey 42% have visited our website, but only 33% have looked at our on-line newsletter, also only 13% have downloaded an application form.

III. Grants Goal

- A. To encourage all forms of art in the region. The council supported a variety of arts activities and art disciplines with grants in FY 2006. Copies of the grant guidelines and applications for the three state funded programs are attached. (Attachments 2 & 3)

In FY 2006 Prairie Lakes awarded 80 grants for a total of \$91,070 (State funds \$67,000 &

McKnight \$24,070). The grants ranged in size from \$320 - \$2,000; and about 37% of those activities focused on youth. Art Project grants \$64,080; Small Arts and Arts-In-Education \$13,490; McKnight/PLRAC Capital \$4,500; and McKnight/PLRAC Artist Grants \$9,000.

The data collection information on these grants was electronically transferred to the MN State Arts Board. The number of organizations participating in the councils grant programs is very steady from year to year. The arts organizations we work with in region nine are very stable with only a very few discontinuing programming or ceasing to exist. However, their growth is limited and primarily they continue similar programs.

A majority of arts activity in our region is music, both instrumental and vocal. Therefore about 50% of the grants awarded by PLRAC represent this discipline. Theater and visual art activities are the next most active and thus receive funding. For the last several years now community education, 4-H groups and libraries have sponsored and coordinated more youth art activities. Children's theater is very popular and several community education departments have sponsored Prairie Fire Children's Theater of Barrett, MN to present a children's play with local children.

For several years the board has addressed funding both established arts organizations and new activities. Therefore, in order to spread the funds out more and fund more arts activities and organizations the board has placed maximums on all grant programs and also recommends partial funding of grants, in some programs, as necessary. In general, the quality of arts activities presented in grant applications in our region is very high.

Ten Percent for Children Legislation. Under Objective A. of the Grant's Goal - we acknowledge that we funded arts programs intended primarily for children with our state funds. Although currently the state does not require that 10% of state funds will be distributed for this purpose, we have continued to document the number of grants and the amount awarded. From the lists below you will note that the symbol "♦" is noted behind the grant amount awarded for each organization that primarily benefits children. **Included in the state grants funded are 24 organizations/projects focusing on youth participation, totaling \$22,700.** We received \$143,175 in FY 2006 and 10% represents \$14,317. Therefore, we can still document that more than 10% of our state funds benefit youth. The youth activities that were funded focused on a variety of disciplines and activities including dance classes and performances, music classes and performances (both vocal and instrumental), children's theater, visual art classes; and artist residencies in the schools and field-trips to arts activities.

- B. To seek additional arts funding. Seeking additional funding was a priority this year and we successfully applied for and received grants to partially fund our 14th Annual Regional Art Exhibition in May 2006. Grants were received from the NorAm/Minnegasco Foundation, Mankato; Prairie Ecology Bus Center, Lakefield; and new this year the Carl & Verna Schmidt Foundation, Rochester. We continue to receive funding from the McKnight Foundation, Minneapolis and administered the following grant programs: Capital, Art Project and Individual Artist Project Grants, for a total of \$24,070. We prepare separate Final Reports for each private foundation. The McKnight Foundation is the only other source of re-grant funds.
- C. To promote and fund rural arts activities in all of the region's communities. The council is sensitive to the needs of our established and emerging arts organizations. Several new arts groups, community groups and schools applied to our programs this year and some were funded.

FY 2006 Grantees: 80 grants totaling \$91,070

Art Project Grantees - \$64,080 (\$53,510 State & \$10,570 McKnight funds)

Art Project Grants awarded in October 2005

	<u>County</u>	<u>Amt. Awarded</u>
Arts Center of St. Peter	Nicollet	\$2,000
Bothy Folk Club	Blue Earth	\$2,000
Dance Conservatory of S. MN, Mankato	Blue Earth	\$2,000 ♦youth
Fairmont Opera House	Martin	\$2,000
Mankato Symphony Orchestra	Blue Earth	\$1,500
MN State Univ., Mankato, Dept. of Music, Mankato	Blue Earth	\$2,000
MN Valley Chorale, Mankato	Blue Earth	\$1,700
MN Valley Sommarfest, St. Peter	Nicollet	\$2,000
Musicorum, Mankato	Blue Earth	\$2,000
St. Peter Choral Society	Nicollet	\$2,000
South Central Service Cooperative, North Mankato	Nicollet	\$2,000
Upper Midwest String/Chamber Music Conf., Mankato	Blue Earth	\$2,000 ♦youth
Waseca Arts Council	Waseca	\$2,000

Art Project Grants awarded in April 2006

Advocates for Developmental Disabilities	Waseca	\$1,700
Betsy-Tacy Society, Mankato	Blue Earth	\$1,700
Blue Earth Valley Concert Assoc.	Faribault	\$2,000
City of New Ulm	Brown	\$1,420
City of St. Peter, Bridge art project	Nicollet	\$1,700
Council for the Arts in New Ulm	Brown	\$2,000
DreamsWork, Lifeworks Services, N. Mankato	Nicollet	\$1,700
Good Thunder Reading Series, MSU, Mankato	Blue Earth	\$2,000
Govenaires Drum & Bugle Corps, St. Peter	Nicollet	\$1,700
Green Isle Community School	Sibley	\$2,000 ♦youth
KMSU / KMSK Radio, Mankato	Blue Earth	\$1,700
Madelia Community Theater	Watonwan	\$ 995
Mankato Area Youth Symphony Orchestra	Blue Earth	\$2,000 ♦youth
Mankato Children's Chorus	Blue Earth	\$2,000 ♦youth
Merely Players Community Theatre, Mankato	Blue Earth	\$2,000
MN Over 60 Band, Gaylord	Sibley	\$1,700
MN Valley Sweet Adelines, Mankato	Blue Earth	\$1,420
New Prague Czech Singers	LeSueur	\$ 900
New Ulm Community Education	Brown	\$2,000 ♦youth
Project G.E.M., Lake Crystal	Blue Earth	\$2,000 ♦youth
Rock Bend Folk Festival, St. Peter	Nicollet	\$2,000
St. Thomas Oratory, Irish Festival, Henderson	Sibley	\$ 745
Waseca County Historical Society	Waseca	\$1,500

Small Arts and Arts-In-Education Grants – Awarded by County \$13,500

Blue Earth County - \$1,750

Bell Tower Troop, St. Clair (SA) \$465 ♦youth
Mankato West High School (AIE) \$320 ♦youth
SMILES Ctr. for Independent Living (SA) \$465
MN State Univ., Mankato Dance Program (SA) \$500 ♦youth

R E C E I V E D

JAN 18 2007

LEGISLATIVE REFERENCE LIBRARY
STATE OFFICE BUILDING
ST. PAUL, MN 55155

Brown County - \$1,500

New Ulm Community Education (SA) \$500 ♦youth

New Ulm High School (AIE) \$500 ♦youth

New Ulm Suzuki School (SA) \$500 ♦youth

Faribault County - \$1,000

United South Central Middle School (AIE) \$500 ♦youth

Winnebago Area Musical Players (SA) \$500

LeSueur County - \$0

Martin County - \$2,440

Fairmont Community Education (SA) \$500 ♦youth

Fairmont High School (AIE) \$475 ♦youth

Five Lakes Elementary, Fairmont (AIE) \$500 ♦youth

Martin County Preservation Assoc. (SA) \$465

Martin County West Comm. Educ., Welcome (SA) \$500 ♦youth

Nicollet County - \$ 1,000

Nicollet County Historical Society (SA) \$500

St. Peter Winterfest Fiddling Contest (SA) \$500 ♦youth

Sibley County - \$2,405

City of Arlington, community band (SA) \$465

Gaylord Library (SA) \$475 ♦youth

GFW Community Education (SA) \$500 ♦youth

Henderson Sauerkraut Days (SA) \$465

Sibley East High School, Arlington (AIE) \$500 ♦youth

Waseca County - \$2,895

MN Agri. Interpretive Center, Farmamerica (SA) \$465

Waseca Band Boosters (SA) \$500

Waseca Chamber of Commerce (SA) \$465

Waseca Community Education (SA) \$465 ♦youth

Waseca County Historical Society (SA) \$500

Waseca Jazz Festival (SA) \$500 ♦youth

Watsonwan County - \$500

St. James Northside Elementary (AIE) \$500 ♦youth

McKnight/PLRAC Capital Grants - \$4,500

Govenaires Drum & Bugle Corps, St. Peter - \$975. Public Address System with microphone for instructors to use when addressing the corps at outdoor rehearsals.

Mankato Symphony Orchestra - \$750. Microphone equipment to record symphony concerts for rebroadcast on the radio the Sunday following each concert; on KMSU Radio, Mankato and KMSK Radio, Austin.

Martin County Preservation Assoc., Fairmont - \$1,275. Microphone system to provide sound reinforcement for the auditorium in the newly created Red Rock Center for the Arts. This multiuse arts

facility hosts music events, poetry readings, arts exhibitions, art classes, workshops, and business and social functions.

Rakstar Fusion Bellydancers, Mankato - \$220. Public Address System to enhance the quality of their outdoor public performances.

Waseca Arts Council- \$1,280. Digital camera and camcorder to videotape events, student art classes and artist interviews. Equipment will also be used to enhance the monthly newsletter and the newly created website.

McKnight/PLRAC Individual Artist Grant - \$9,000

Mary Lee Amberg, Bricelyn - \$1,000. To purchase framing materials for a series of fifteen medium and large scale oil collages (mixed media), for a future exhibition.

Cheryl Casteen, St. Peter - \$600. To purchase supplies to create photograph portraits displayed as transparencies in photo light-boxes that have an interactive sound component. An exhibition at the Arts Center of St. Peter is planned.

Tammy Fienen, N. Mankato - \$600. To participate in a writer's on-line workshop through Writer's Digest, individual mentoring, and assistance of an editor to complete her children's novel, "Why Do Things Have a Way For Happening?"

Judy Gardner, Mankato - \$600. To purchase supplies to create new art work and to mat and frame the art work for exhibitions. She will attend several workshops at the Lifeworks Visual Arts Studio. The art work will be displayed at several exhibits coordinated by DreamsWork in the Mankato area.

Rachael Hanel, Madison Lake - \$1,000. To pay for the assistance of an editor to review her manuscript, "We'll Be the Last Ones to Let you Down", a memoir about growing up as a gravedigger's daughter.

Jill Kalz, New Ulm - \$1,000. Travel and registration expenses to participate in a two-week residency in fall 2006. She will complete a book-length collection of southern Minnesota based short stories suitable for publication.

Jonathan Knecht, Mapleton - \$600. To purchase a digital camera and external hard drive to assist in his development of photography into his mixed media art work; and to work in a larger scale.

Jen Marks, Mankato - \$1,000. Travel expenses to research topics for her poems, including two bicycle trips in Minnesota. She plans to generate a new body of publishable poems to submit to regional and national poetry journals. She will present some of the poems at a Minnesota State University, Mankato alumni reading.

Amber Rahe, N. Mankato - \$1,000. To purchase supplies to create new art work, document the work and prepare for an exhibit ion at the Kiesling House Gallery in New Ulm.

Steve Wilson, N. Mankato - \$600. To purchase supplies and equipment to create new large drawings, paintings, and several mixed media pieces that relate to his cycling experience in Iowa, and to document the work.

Kathryn Young, St. Peter - \$1,000. Production and studio time for a musician and songwriter to complete a CD of original jazz and blues songs.

MONITORING AND EVALUATION OF GRANTS

In order to monitor and evaluate the grants for the year, a two step process of payment is involved for the Art Project grant program. Eighty percent of the grant is paid to each grantee one month prior to their event. Once the project is completed and the Final Report is submitted and approved, the final 20% is

paid. The Small Arts and Arts-In-Education grants are paid in full to each grantee one month prior to their event. The McKnight/PLRAC Capital and Individual Artist Grantees also receive 80% upon receipt of their contract. When the Final Report is submitted and approved, the final 20% is paid.

Grantees are instructed in their contract letter that any significant changes must be reported promptly, and that permission for changes or extensions must be requested through the Executive Director. If the changes represent a major change in direction for the project, the Executive Director will bring the request before the council for approval. Grantees are required to file a final report with the council 60 days after completing their projects. Final reports are reviewed and approved by the Executive Director if no discrepancies are noted. If discrepancies exist, the director will notify the executive committee and/or full board. Final reports are always available for review by council members, and may be brought to regular meetings for review. Board members and staff who have attended funded projects report on them at monthly meetings.

The Executive Director periodically reviews the grant files to see whether organizations have outstanding final reports. Should an overdue report be indicated, the Executive Director sends a reminder letter to the grantee. The staff sends additional letters or makes calls as needed to close the files of completed projects. Grantees are reminded of the responsibilities they share with the council for full accountability of public funds. If the Final Report is more than 6 months overdue the board has the authority to deny the final 20% payment. The contract with the grantee also states "If after an additional six months the final report has still not been submitted to the PLRAC, the organization will not be considered for funding for two years from the completion date of the project."

STAFFING

Executive Director:	Brenda Flintrop, employed 17 years as Arts Council Director
Administrative Assistant:	Cindy Lewer, employed 11 years as Admin. Assistant/Bookkeeper

BOARD OF DIRECTORS

Blue Earth County	Carla Bode, Mankato
Brown County	Sandra Walworth, Springfield
Faribault County	Nancy Willette, Winnebago
LeSueur County	Maureen Gunderson, Montgomery - Secretary
Martin County	Mary Don Kislingbury, Fairmont
Nicollet County	Douglas Huff, St. Peter - Vice-president
Sibley County	Heather Swierczek, Henderson
Waseca County	Margaret Sinn, Waseca
Watonwan County	Gloria Eager, Madelia
City of Fairmont	Michael Burgraff - Treasurer
City of Mankato	Kevin Kroeber - President
City of New Ulm	Ann Nelson
City of North Mankato	Sandra Walberg

14TH ANNUAL PRAIRIE LAKES REGIONAL JURIED ART EXHIBITION A HUGE SUCCESS!

The Prairie Lakes Regional Arts Council sponsored the 14th Annual Prairie Lakes Regional Juried Art Exhibition May 3-June 15, 2006 in cooperation with the Carnegie Arts Center, Mankato. Cash & Purchase Awards totaling \$3,415 were presented at the Opening Reception. Art work which placed first through fifth is pictured on page three.

A total of 249 works of art were submitted for the exhibition, representing 155 artists. The exhibition encompassed a variety of mediums which included: drawings; paintings in acrylic, oil and watercolor; mixed media; photography; fiber; ceramics; sculpture and woodcarving. "This juried exhibit is an opportunity for emerging and established artists to display their work in a professional setting", noted Brenda Flintrop, Executive Director, at the Opening Reception May 21st.

The jurors selected 105 pieces for display. The jurors were Paul Schumann, Minneapolis and Pam Valfor, Minneapolis. The juror's comments were: "Jurying the exhibition allowed us to view the exceptional talent in the nine-county area which Prairie Lakes Arts Council serves. We were taken with the breadth and strength of the works submitted this year. It solidified our belief that some of the most engaging emerging artists are being cultivated in this region. The number of quality works exceeded the availability of space, which made our job extremely difficult, but rewarding. We hope that this exhibition invites pause for reflection, encourages dialogue, and stimulates creative activity. Our thanks to the Prairie Lakes Regional Arts Council and the Carnegie Art Center for giving us the opportunity to experience the artistic vibrancy that southern Minnesota has to offer."

(article continues on page 2)



Quarterly Newsletter
Summer 2006

Arts Grants total \$91,070 in FY 2006

(Funding will remain consistent for FY 2007)

In FY 2006 Prairie Lakes awarded 80 grants for a total of \$91,070. The grants ranged in size from \$320 to \$2,000; and about 37% of those activities focused on youth. Prairie Lakes receives funding from the MN State Legislature and the McKnight Foundation, Minneapolis for re-granting. A list of grantees from FY 2006 is included in this newsletter. Summary of programs: Art Project Grants \$64,080; Small Arts and Arts-In-Education \$13,490; Capital \$4,500 and Individual Artist Projects \$9,000.

In the nine-county area we are fortunate to have a large variety of musical organizations and activities, both vocal and instrumental. This represents the largest art discipline Prairie Lakes Regional Arts Council reviews and funds through grant applications (about 50%). In a given year, the board will review about 105 applications. Theater performances compose about 20% of all funded activities and so do visual art projects and exhibitions, at 20%. Dance and literature projects are less common and represent about 5% each. Under-served areas continue to be dance, literature, media art and ethnic music and dance. Artist project grants are funded by the McKnight Foundation and these represent a variety of media.

For information on FY 2007 Grant
Program Deadlines please refer to page 4.



Art Exhibition Award Winners - Row 1 (L to R): Andi Davenport, Sandra Walberg, Jackie May.
Row 2: Joy Gerard, Nina Preheim, Sarah Beth Logan, Erin Gergen Halls. Row 3: Malia Krohn, Tiffany Shelton, Joel Moline, Kim Bovee. Row 4: Bryan Boyce, Denice Woller, Joe Flannery and Michelle Johnson.



ART EXHIBITION

(continued from page 1)

The People's Choice Award was selected by the those attending the Opening Reception. Malia Krohn's oil painting entitled "Gaze of Speculation" received the \$50 award.

Over 500 students and teachers toured the exhibition using bus stipends provided by PLRAC, another 200 attended the opening reception, with total attendance estimated around 900. We are proud to sponsor this event that showcases the artistic diversity and quality of our rural artists. It also provides an educational opportunity for youth, teachers and the general community.

Prairie Lakes donated the artwork purchased with NorAm/Minnegasco and Prairie Ecology Bus Center funds, totaling \$1,625 to the Waseca Art Center and the Art Center of St. Peter for their permanent collections. The exhibition is funded by grants from the McKnight Foundation, Minneapolis; NorAm/Minnegasco Foundation, Mankato; Carl and Verna Schmidt Foundation, and Prairie Ecology Bus Center, Lakefield.

MERIT AWARDS

Kim Bovee, Henderson – "Thoughtful", Oil Painting
 Bryan Boyce, Waseca – "United We Stand", Photography
 Joe Flannery, Mankato – "Mexican Jesus", Oil Painting
 Erin Gergen-Halls, Mankato – "Alabaster Bowl", Colored Pencil Drawing
 Leah Hughes, North Mankato – "Dreamscape", Pen and Ink Drawing
 Michelle Johnson, Mankato – "'H' Variation 7", Ink Drawing
 Les Laidlow, Mankato – "Teapot", Ceramics
 Mika Laidlow, Mankato – "Perch", Ceramics
 Sarah Beth Logan, Mankato – "Untitled 1", Ceramics and Beeswax
 Patti Ruskey, Mankato – "Is It Raining In Paris", Mixed Media

HONORABLE MENTION

(\$25 Gift Certificates were donated by Don's Hobby, Mankato)

Andi Davenport, Mankato – "Death Mask", Acrylic Painting
 Joel Moline, St. Peter – "Lost in Thought", Linoleum Cut
 Nina Preheim, St. Peter – "Vine Vessel", Porcelain
 Tiffany Shelton, Fairmont – "Wunderkind", Photography
 Dennis Woller, Mankato – "Farm-Side Stand", Photography

PURCHASE AWARDS

Prairie Lakes donated the art work to the Arts Center of St. Peter and the Waseca Art Center for their permanent collections.

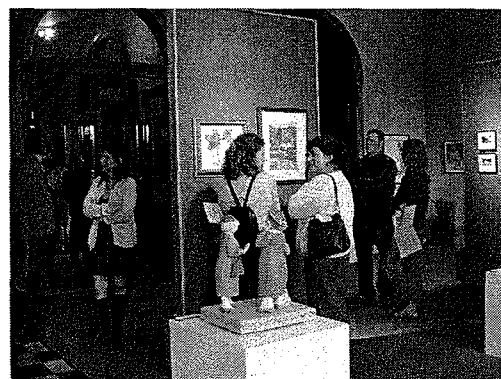
Pam Bidelman, St. Peter – Untitled, Oil Painting
 Anders Björling, St. Peter – "Midnight-Iceberg Lagoon, Iceland", Photography
 Joe Flannery, Mankato – "Mayan Figurine", Graphite Drawing
 Erin Gergen Halls, Mankato – "Alabaster Bowl", Colored Pencil Drawing
 Malia Krohn, Nicollet – "Gaze of Speculation", Oil Painting
 Jackie May, North Mankato – "Visual Darkness", Acrylic Painting
 Carol Stott, North Mankato – "Tree Line II", Mixed Media



LeCenter Elementary School brought 46 5th graders to tour the Exhibit May 5th. These boys pose for a photo in the Fireside Gallery at the Carnegie.



Rotunda Gallery at Carnegie



Hope Cook Gallery at Carnegie



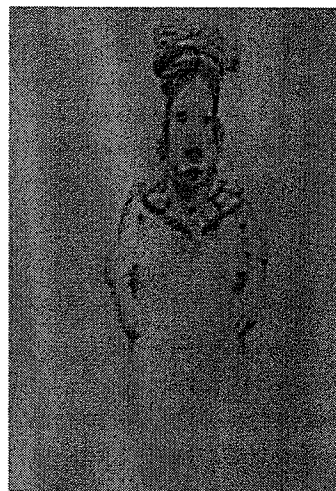
PLRAC Board Members & staff at the Opening Reception.

Row 1 (L to R): Nancy Willette, Carla Bode, Cindy Lewer and Heather Swierczek. Row 2: Sandra Walberg, Maureen Gunderson and Gloria Eager. Row 3: Kevin Kroeber, Doug Huff and Brenda Flintrop.

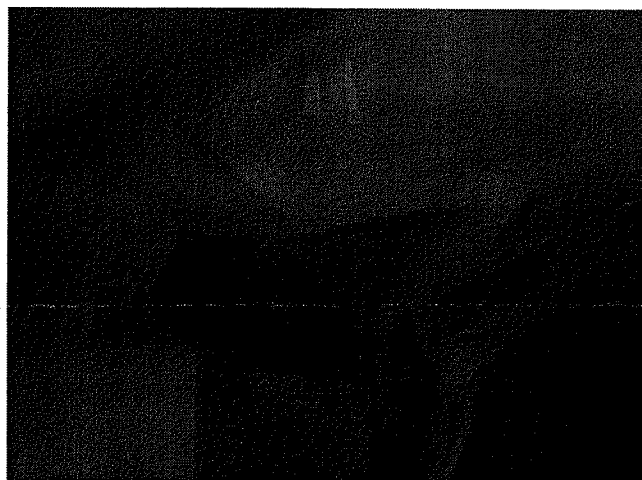
Award Winners of the 14th Annual Regional Art Exhibition



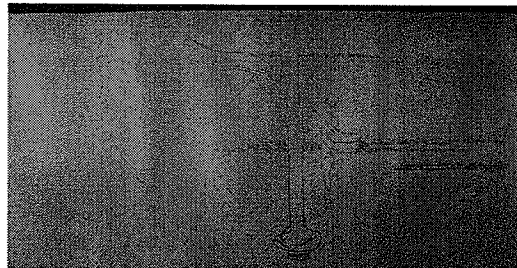
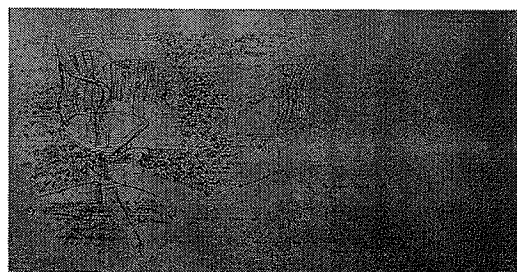
1st Place - \$200
 "Treeline II", Mixed Media
 by Carol Stott, North Mankato



2nd Place - \$150
 "Mayan Figurine", Graphite Drawing
 by Joe Flannery, Mankato



3rd Place - \$125
 "From Eberle", Pastel Drawing
 by Sandra Walberg, North Mankato



4th Place - \$100
 "Things We Take for Granted", (Diptych)
 Graphite Drawing by Garrett Hoelzel, Mankato



5th Place - \$75
 "Rain Forest", Fibers
 by Joy Gerard, Courtland



People's Choice Award - \$50
 "Gaze of Speculation", Oil Painting
 by Malia Krohn, Nicollet

ART PROJECT GRANTS

A total of \$25,200 was awarded in October and \$38,880 in April for Art Project grants, total \$64,080. A variety of activities including dance, instrumental and vocal music, theater and visual art exhibitions were funded. These grants may be awarded to non-profit arts organizations, community groups or public organizations for art activities in all artistic disciplines. Matching grants up to \$2,000 are available and the next deadline is 9/15/2006.

Art Project Grants awarded in October 2005

Arts Center of St. Peter, \$2,000
Bothy Folk Club, Madelia, \$2,000
Dance Conservatory of S. MN, Mankato, \$2,000
Fairmont Opera House, \$2,000
Mankato Symphony Orchestra, \$1,500
MN State Univ., Mankato, Dept. of Music, Mankato, \$2,000
MN Valley Chorale, Mankato, \$1,700
MN Valley Sommarfest, St. Peter, \$2,000
Musicorum, Mankato, \$2,000
St. Peter Choral Society, \$2,000
South Central Service Cooperative, North Mankato, \$2,000
Upper Midwest String/Chamber Music Conf., Mankato, \$2,000
Waseca Arts Council, \$2,000

Art Project Grants awarded in April 2006

Advocates for Developmental Disabilities, Waseca, \$1,700
Betsy-Tacy Society, Mankato, \$1,700
Blue Earth Valley Concert Assoc., \$2,000
City of New Ulm, \$1,420
City of St. Peter, Bridge art project, \$1,700
Council for the Arts in New Ulm, \$2,000
DreamsWork, Lifeworks Services, N. Mankato, \$1,700
Good Thunder Reading Series, MSU, Mankato, \$2,000
Govenaires Drum & Bugle Corps, St. Peter, \$1,700
Green Isle Community School, \$2,000
KMSU / KMSK Radio, Mankato, \$1,700
Madelia Community Theater, \$995
Mankato Area Youth Symphony Orchestra, \$2,000
Mankato Children's Chorus, \$2,000
Merely Players Community Theatre, Mankato, \$2,000
MN Over 60 Band, Gaylord, \$1,700
MN Valley Sweet Adelines, Mankato, \$1,420
New Prague Czech Singers, \$900
New Ulm Community Education, \$2,000
Project G.E.M., Lake Crystal, \$2,000
Rock Bend Folk Festival, St. Peter, \$2,000
St. Thomas Oratory, Irish Festival, Henderson, \$745
Waseca County Historical Society, \$1,500

McKnight/PLRAC Capital Grants

The focus of this grant program, funded by the McKnight Foundation, is on excellence in our established non-profit arts organizations. Arts organizations may request support for small capital expenses related to their programs or services which increase their artistic quality.

Govenaires Drum & Bugle Corps, St. Peter - \$975. Public Address System with microphone for instructors to use when addressing the corps at outdoor rehearsals.

Mankato Symphony Orchestra—\$750. Microphone equipment to record symphony concerts for rebroadcast on the radio the Sunday following each concert; on KMSU Radio, Mankato and KMSK Radio, Austin.

Martin County Preservation Assoc., Fairmont - \$1,275. Microphone system to provide sound reinforcement for the auditorium in the newly created Red Rock Center for the Arts. This multiuse arts facility hosts music events, poetry readings, arts exhibitions, art classes, workshops, and business and social functions.

Rakstar Fusion Bellydancers, Mankato - \$220. Public Address System to enhance the quality of their outdoor public performances.

Waseca Arts Council- \$1,280. Digital camera and camcorder to videotape events, student art classes and artist interviews. Equipment will also be used to enhance the monthly newsletter and the newly created website.

2006 - 2007 GRANT DEADLINES

Art Project Grant - \$2,000

Total \$32,035 available per deadline.

September 15, 2006 and March 15, 2007

Arts-In-Education & Small Arts Project - \$500

Total \$13,500 available.

The 1st of each month

Capital grants for organizations - \$1,500

Total \$4,500 available.

September 1, 2006

Individual Artist Project grants - \$1,000

Total \$9,000 available.

February 15, 2007

All Grant Applications are available on our website www.plrac.org as both a Word document and a PDF file. If you prefer to receive a copy in the mail please contact our office.

MCKNIGHT/PLRAC INDIVIDUAL ARTIST GRANTEES

A total of \$9,000 was awarded. Artists are listed alphabetically.

Mary Lee Amberg, Bricelyn - \$1,000. To purchase framing materials for a series of fifteen medium and large scale oil collages (mixed media), for a future exhibition.

Cheryl Casteen, St. Peter - \$600. To purchase supplies to create photograph portraits displayed as transparencies in photo light-boxes that have an interactive sound component. An exhibition at the Arts Center of St. Peter is planned.

Tammy Fienen, N. Mankato - \$600. To participate in a writer's on-line workshop through Writer's Digest, individual mentoring, and assistance of an editor to complete her children's novel, "Why Do Things Have a Way For Happening?"

Judy Gardner, Mankato - \$600. To purchase supplies to create new art work and to mat and frame the art work for exhibitions. She will attend several workshops at the Lifeworks Visual Arts Studio. The art work will be displayed at several exhibits coordinated by DreamsWork in the Mankato area.

Rachael Hanel, Madison Lake - \$1,000. To pay for the assistance of an editor to review her manuscript, "We'll Be the Last Ones to Let you Down", a memoir about growing up as a gravedigger's daughter.

Jill Kalz, New Ulm - \$1,000. Travel and registration expenses to participate in a two-week residency at Ragdale in fall 2006 (an artists' community in Lake Forest, IL). She will complete a book-length collection of southern Minnesota based short stories suitable for publication.

Jonathan Knecht, Mapleton - \$600. To purchase a digital camera and external hard drive to assist in his development of photography into his mixed media art work; and to work in a larger scale.

Jen Marks, Mankato - \$1,000. Travel expenses to research topics for her poems, including two bicycle trips in Minnesota. She plans to generate a new body of publishable poems to submit to regional and national poetry journals. She will present some of the poems at a Minnesota State University, Mankato alumni reading.

Amber Rahe, N. Mankato - \$1,000. To purchase supplies to create new art work, document the work and prepare for an exhibit ion at the Kiesling House Gallery in New Ulm.

Steve Wilson, N. Mankato - \$600. To purchase supplies and equipment to create new large drawings, paintings, and several mixed media pieces that relate to his cycling experience in Iowa, and to document the work.

Kathryn Young, St. Peter - \$1,000. Production and studio time for a musician and songwriter to complete a CD of original jazz and blues songs.

ARTS-IN-EDUCATION and SMALL ARTS PROJECT GRANTS

\$13,490 was awarded in FY 2006

BLUE EARTH COUNTY- \$1,750

Bell Tower Troop, St. Clair (SA) \$465
Mankato West High School (AIE) \$320
SMILES Ctr. for Independent Living (SA) \$465
State Univ., Mankato Dance Program (SA) \$500

BROWN COUNTY - \$1,500

New Ulm Community Education (SA) \$500
New Ulm High School (AIE) \$500
New Ulm Suzuki School (SA) \$500

FARIBAULT COUNTY- \$1,000

United South Central Middle School (AIE) \$500
Winnebago Area Musical Players (SA) \$500

LE SUEUR COUNTY

MARTIN COUNTY - \$2,440

Fairmont Community Education (SA) \$500
Fairmont High School (AIE) \$475
Five Lakes Elementary, Fairmont (AIE) \$500
Martin County Preservation Assoc. (SA) \$465
Martin County West Comm. Educ., Welcome (SA) \$500

NICOLLET COUNTY - \$1,000

Nicollet County Historical Society (SA) \$500
St. Peter Winterfest Fiddling Contest (SA) \$500

SIBLEY COUNTY - \$2,405

City of Arlington, community band (SA) \$465
Gaylord Library (SA) \$475
GFW Community Education (SA) \$500
Henderson Sauerkraut Days (SA) \$465
Sibley East High School, Arlington (AIE) \$500

WASECA COUNTY - \$2,895

MN Agri. Interpretive Center, FarmAmerica (SA) \$465
Waseca Band Boosters (SA) \$500
Waseca Chamber of Commerce (SA) \$465
Waseca Community Education (SA) \$465
Waseca County Historical Society (SA) \$500
Waseca Jazz Festival (SA) \$500

WATONWAN COUNTY - \$500

St. James Northside Elementary (AIE) \$500

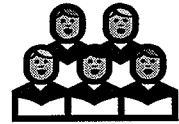
Matching grants up to \$500 are available for both these programs. Money is allocated to each county (\$1,500) and awarded on a first come, first serve basis, until February 1st, then it is available to other counties.

The deadline is the 1st of each month.

The Small Arts project grant is available to non-profit arts organizations and community groups sponsoring arts activities for their community. Arts-In-Education (AIE) grants are for public or private non parochial schools K-12 for artist residencies, live art performances or mini-workshops and arts related field trips.



Calendar of Arts Events



July

- 11 **2006 Thunder of Drums**, Blakeslee Field, 170 Stadium Rd., MN State University, Mankato, Pre-show performance by the 77 Lancers at 6:30 pm and 7 p.m. Show. \$14/adv. reserved, \$15/reserved at gate, \$7/adv. gen. admission & \$8/gen. admission at gate. Tickets: (507) 385-9129, www.thunderofdrums.com
- 11 **Community Band Concert**, Sylvania Park, Fairmont, 8 p.m. Free. For info. chamber@fairmont.org, www.fairmont.org or (507) 235-5547
- 11-15 **Art Exhibition by Amber Rahe** at Kiesling House Gallery, 220 N. Minnesota St., Council for the Arts in New Ulm. Gallery Hours: Sat. 10 a.m.-4 p.m. and Sun. 1-4 p.m. councilartsnewulm@yahoo.com or (507) 359-9681
- 11-23 **Northern Clay Center Potters: McKnight Winners in Ceramics**, Arts Center of St. Peter, 315 S. Minnesota Ave. Gallery Hours: Tuesday-Sunday 1-5 p.m. and Thursday 1-8 p.m. Contact gallery@artscentersp.org; www.artscentersp.org or (507) 931-3630
- 11-29 **"Out From Center"**, exhibition of paintings & pastel drawings by Sandra Walberg at Waseca Art Center, 410 N. State St. Gallery hours: Tues.-Fri. 10 a.m.-4 p.m. and Sat. 10 a.m.-2 p.m., (507) 835-1701 or www.wasecaartscouncil.org
- 11 - 28 **Photography Art Exhibition**, Carnegie Art Center, 120 S. Broad St., Mankato. Gallery Hours: Wed., Fri. and Sat. 1-4 p.m. and Thurs. 1-7 p.m., (507) 625-2730
- 11-31 **TimeWarp** a brief RETROspective, paintings by Amanda Gullixson at The Coffee Hag, 329 N. Riverfront Dr., Mankato.
- July 11-Aug. 19 **Art Exhibition featuring Watercolors by Wil Schneider** at N. Mankato Public Library, 1001 Belgrade Ave. (Opening Reception July 13, 5-7 p.m.) Library hours: M-Th 10 a.m.-8 p.m., Fri. 10 a.m.-6 p.m., Sat. 10 a.m.-4 p.m. Free. For info. (507) 893 4207 or wil@bevcomm.net
- 12 **Phil Baker Concert** featuring Limbo, Conga and other music at Waseca Junior H.S. Gym, 10-11 a.m., sponsored by Waseca-LeSueur Regional Library. For info. (507) 835-2910
- 12 **Sibley East Community Band** performance at Gaylord Band Shell, 7:30 p.m.
- 13, 20 & 27 **Minnesota Valley Sommarfest** presents 17th Season, "Schumann and Friends" 7:30 p.m., Björling Recital Hall, Gustavus Adolphus College. Tickets: \$10/adults, \$8/senior citizens & students and \$25 families. (507) 933-7363. (July 13 The MN Valley Sommarfest Trio; July 20 The Artaria String Quartet and July 27 "The Soldier's Tale" performed by local actors, dancers and musicians.)

- 14 **Ralph Bailey, Original Folk music** - lower level Arts Center of St. Peter, 315 S. Minnesota Ave., 7:30 p.m., \$7 Adults; \$6 members; kids free, (507) 931-3630 or www.artscentersp.org
- 16 **Old Fashioned Ice Cream Social** at the Ottawa Town Hall, 2-4 p.m. Features: raffle, tours, & music by the Oxbow Boys. 1869 Methodist Stone Church open for visitation 1:30-4:30 p.m.
- 19 **Sibley East Community Band** performance at Arlington Four Season Park Hockey Rink; 7:30 p.m.
- 21-23 & 28-30 **"Children of Eden"** presented by Protean Players H.S. Comm. Theatre, New Ulm at the Holy Trinity Middle School Auditorium, New Ulm. July 21-23 and 28-29 at 7 p.m. and July 30 at 2 p.m. Tickets \$7/adults and \$5/children and seniors.
- 24-29 **"The Music Man"** by Fairmont Civic Summer Theatre, Fairmont Opera House. For info. (507) 235-5547, chamber@fairmont.org or www.fairmont.org
- July 27 - Sept. 10 **7th Annual Members Art Exhibit** - All Media, Arts Center of St. Peter, 315 S. Minnesota Ave. (Opening Reception: July 29, 2-5 p.m.) Gallery Hours: Thurs. 1-8 p.m. and Tues.-Sun. 1-5 p.m., (507) 931-3630, gallery@artscentersp.org or www.artscentersp.org
- 29-30 **Kolacky Days** at the Arts & Heritage Center, 206B First St. N., Montgomery featuring display of past Kolacky Queens, July 29, 10 a.m.-3 p.m. Ice cream social, food stands, music performances 10:30 a.m.-1:30 p.m., performance by "3 AM" featuring classic rock and roll; and visit Log Cabin in the park 1-4 p.m. (507) 364-5933
- 29-30 **"One Man's Justice"** presented by St. Peter Chautauqua Assembly, at Gorman Park in the Chautauqua tent, Grace St. and Washington Ave, St. Peter. 7 p.m., Adults/\$5 & Youth/\$3. Civil War Lecture Series 1-5 p.m. Includes music by the Oxbow Boys. No admission charge to other park activities. (507) 934-3400 or spchamb@hickorytech.net

August

- 4 **Mariah Cavett**, original alternative rock, vocals and guitar - lower level Arts Center of St. Peter, 315 S. Minnesota Ave., 7:30 p.m., \$5 Adults & kids free. (507) 931-3630 or www.artscentersp.org
- 4-5 **"Robinhood"** presented by GFW youth and Prairie Fire Children's Theater at Fort Ridgely State Park/Amphitheater. 7 p.m. Fri. & 1 p.m. Sat. No admission fee for play but state park pass required. For info. (507) 834-6822.
- 4-6 **Three One Act Plays**, presented by New Ulm Actors Theater, Rhein River Arts Center, 210 N. Minnesota. (507) 354-6777



Note: Due to the advanced print deadlines of this publication, we suggest that you call to confirm dates, times and other information of events and opportunities.

August

4-5 & 11-13 "Joseph and the Amazing Technicolor Dreamcoat" presented by Curtain Call Theater, at New Prague H.S. 7:30 p.m. and Aug. 13 at 2 p.m. \$10/adults and \$5/children 12 & under. Ticket info. (952) 758-5534

Aug. 4-Sept. 2 WAC Member's Annual Invitational Show at Waseca Art Center, 410 N. State St. Gallery hours: Tues.-Fri. 10 a.m.-4 p.m. and Sat. 10 a.m.-2 p.m., (507) 835-1701 or www.wasecaartscouncil.org

5 LeSueur Giant Celebration, featuring music by the Oxbow Boys 5-7:30 p.m. at Legion Park, Le Sueur.

11 "Lights, Hammer, Action" youth theater performance, 7:30 p.m. at The Bell Tower, 313 E. Main Street, St. Clair. Contact (507) 245-3177

11-12 "Pinocchio", presented by Waseca youth and Prairie Fire Children's Theatre at Central Intermediate School Auditorium, Waseca. Aug. 11, 7 p.m. and Aug. 12, 2 p.m., tickets \$5/adult and \$4/student & seniors. Sponsored by Waseca Community Education. For info. (507) 835-5626

11 -12 Gaylord EGGstravaganza. Aug. 11 Egg Breakfast, 7-9 a.m., music by the Oxbow Boys at Gaylord City Hall; and Sibley East Community Band performs at 7 p.m. The Oxbow Boys also perform after the parade on Aug. 12 at the Gaylord City Park.

12-13 MN Agr. Inter. Center, Farmamerica Summer Show, Waseca, 10 a.m.-3 p.m., rain or shine, \$5/adults and \$3/students. (507) 835-2052 or www.farmamerica.org

18-20 23rd Annual Upper Midwest Woodcarving and Quilt Expo, Blue Earth H.S.-Unity Hall. For more info. (507) 526-2916, chamber@bevcomm.net or www.blueearthchamber.com

19 Govenaires Drum and Bugle Corps Show/Competition, Gustavus Adolphus College, St. Peter. 4 p.m. \$6/in advance and \$8/at the door. (507) 388-1927, pr@govenaires.org or www.govenaires.org

19 DreamsWork Annual ART EXPLOSION, sponsored by Lifeworks Visual Arts Studio, 1806 Commerce Dr., N. Mankato. Art Opportunities for people with developmental and physical disabilities. For info. (507) 351-3207 Free.

19 AUDITIONS for Mankato Area Youth Symphony Orchestra and North Star Strings at Minnesota State University, Mankato, Performing Arts Center. For audition info and to schedule an audition go to www.mayso.net (507) 345-0702

22 2nd Annual Block Party, Bethlehem Lutheran Church parking lot, Mankato, sponsored by SMILES Center for Independent Living, Mankato. The family orientated Free event will celebrate diversity and include music, strolling performers, food vendors, exhibits & art activities. (507) 345-7139 ext. 27.

27

REGISTRATION for Mankato Children's Chorus 2006-2007 Season. 4:30-7 p.m., Grace Lutheran Church, 4th & Main, Mankato. No appointment necessary, registration takes about 15 minutes. Open to any youth who enjoys singing, Grades 1-12. Contact jaune@hickorytech.net

September



7

Pieta Brown music performance, Minnesota State Mankato Performance Series, at Halling Recital Hall, MN State Univ., 320 Maywood Ave., Mankato; 7:30 p.m. Tickets \$15/adults, \$12/students K-12, and \$7/MSU students. www.mnsu.edu/music/events or (507) 389-5549

Sept. 8-Oct. 14 Exhibition of works by Shelly Cords-Swanson, Lisa Anderson and John Kolb at Waseca Art Center, 410 N. State St. Gallery hours: Tues.-Fri. 10 a.m.-4 p.m. and Sat. 10 a.m.-2 p.m., (507) 835-1701 or www.wasecaartscouncil.org

8-30 Art Exhibition of works by Joe Flannery at Carnegie Art Center, 120 S. Broad St., Mankato, (Opening Reception Sept. 8th, 7-9 pm.) Gallery Hours: Wed., Fri. and Sat. 1-4 p.m. and Thurs. 1-7 p.m. (Works will include drawings and traditional gesso paintings influenced by pre-Columbian Mexican figurines.) (507) 625-2730

9

Prairie Star Quilt Guild Style Show and Luncheon, Bethel Evangelical Free Church, Fairmont. For info., chamber@fairmont.org, www.fairmont.org or (507) 235-5547

9 -10

16th Annual Rock Bend Folk Festival at Minnesota Square Park, St. Peter. Free. Sept 9th -12 noon to 10 p.m., 10th - 12 noon to 6 p.m. For info. www.rockbend.org

9 -10

MN Agr. Inter. Center, Farmamerica Fall Fair, Waseca, 10 a.m.-3 p.m., rain or shine, \$5/adults & \$3/students, Music by Blue Drifters at Visitor Center 1-3 p.m. (507) 835-2052 or www.farmamerica.org

12

Fairmont Opera House presents Tony Deblois. For tickets and information contact (507) 238-4900 or opera@bevcomm.net

12

Trampled by Turtles music performance, Minnesota State Mankato Performance Series, at Halling Recital Hall, MN State Univ., 320 Maywood Ave., Mankato; 7:30 p.m. Tickets \$15/adults, \$12/students K-12, \$9/MSU students. (507) 389-5549 or www.mnsu.edu/music/events

14

Fairmont Concert Association presents Proteus Seven. For information chamber@fairmont.org, www.fairmont.org or (507) 235-5547,

14

Good Thunder Reading Series at MN State University, Mankato featuring Fiction by Dodie Miller, and Fiction/Children's Writing by Alison McGhee. Talk on craft 3 p.m. by McGhee at CSU Ostrander Auditorium, and 7:30 p.m. Reading in CSU North Ballroom. (507) 389-1354 or www.english.mnsu.edu/gt

Note: Due to the advanced print deadlines of this publication, we suggest that you call to confirm dates, times and other information of events and opportunities.

September

- Sept. 14 – Oct. 15 Jon Smithers: On the Wing -Wildlife Photography**, Arts Center of St. Peter, 315 S. Minnesota Ave. (Opening Reception: Sept. 16, 2-5 p.m.) Gallery Hours: Thurs. 1-8 p.m. and Tues.-Sun. 1-5 p.m., gallery@artscentersp.org, www.artscentersp.org or (507) 931-3630
- 15-17 & 22-24 New Ulm Actors Theater will present "Nunsense II"** at the New Ulm Community Center, 7th North and German Street, New Ulm. \$9/adults & \$7/children & seniors. (507) 354-6777
- 16 Poets and Storytellers** at Coffeehouse at DHS, Delavan; 3-5 p.m. For info. (507) 854-3497 or (507) 854-3346
- 16 Dozinky Czech Harvest Festival**, featuring Czech entertainment, ethnic foods, Parade of Farm Pride at noon, Main Street, New Prague, 10 a.m.-5 p.m. (952) 758-4360 or npcocf@bevcomm.net
- 19 Goeff Muldaur music performance, Minnesota State Mankato Performance Series**, at Halling Recital Hall, MN State Univ., 320 Maywood Ave., Mankato; 7:30 p.m. Tickets \$15/adults, \$12/students K-12, and \$7/MSU students. (507) 389-5549 or www.mnsu.edu/music/events
- 19 Auditions/Rehearsal for Minnesota Valley Chorale**, Ylvisaker Fine Arts Center, Bethany Lutheran College, Mankato. 6:30 p.m. auditions and 7-9 p.m. rehearsal. Contact Jaci at (507) 382-5356 or www.minnesotavalleychorale.org
- 22 The New Riverside Ramblers, Cajun Dance Music**, 7 p.m. (Ticket prices – TBA, at Gustavus Adolphus College, St. Peter – location TBA)
- 26 Eric Bibb music performance, Minnesota State Mankato Performance Series**, at Halling Recital Hall, MN State Univ., 320 Maywood Ave., Mankato; 7:30 p.m. Tickets \$18/adults, \$12/students K-12, and \$9/MSU students. www.mnsu.edu/music/events or (507) 389-5549

UPCOMING NEW EVENTS

- Xel 2006 Mankato's Digital Art Showcase** – Artists must live within a 20 mile radius of Mankato to enter. **Sept. 18** Slide deadline for submission, noon; Oct. 6 Drop-off deadline, noon; **Oct. 7 Opening night, 8 p.m.**
- Oct. 7 & 8** Experience the spirit of St. Peter & Mankato as they open their doors for **"RiverCrossings art fair in motion"**. Oct. 7, 10 a.m.-5 p.m. & Oct. 8, noon to 5 p.m. A collaborative effort of The Bridge: a center for culture and life in St. Peter; the Arts Center of St. Peter www.artscentersp.org; and Twin Rivers Center for the Arts in Mankato www.twinriversarts.org. Contact: Michelle Kaisersatt 507-934-1556 or bridge@hickorytech.net

ART CLASSES – Summer 2006

Arts Center of St. Peter, 315 S. Minnesota Ave. A variety of youth and adult classes are offered. Contact (507) 931-3630, claycenter@artscentersp.org or www.artscentersp.org. Registration for Clay Center classes is through St. Peter Comm. Educ., 500 S. Fifth St., (507) 934-3048 or <http://stpeter.registryinsight.com/itrium/servlet/visit>

BellTower Troop, St. Clair will sponsor a Theatre Camp for youth, "Lights, Hammer, Action" for grades 7-12, August 7-11, 8 a.m.-4 p.m., cost \$100. A public performance will be held on Aug. 11 at 7:30 p.m. at The BellTower, 313 E. Main St., St. Clair. Contact (507) 245-3177 or 388-5501

Lifeworks Visual Arts Studio, 1806 Commerce Dr., N. Mankato. Contact Katie Boone, Program Coord. for DreamsWork, Art Opportunities for people with developmental and physical disabilities, (507) 351-3207; July 20, 6-7:30 p.m. Art Workshop \$10; Aug. 19, 12 noon-3 p.m. Free. DreamsWork Annual Art Explosion Sept. 16 & 23 DreamsWork Art Workshops \$20.

Passion for ART, 210 North State St., Waseca, (507) 833-6061. Illusionary Watercolor Workshop, Instructor: Karen Knutson, July 22 & 23, 9 a.m.-4 p.m., Fee \$150; and Watercolor for Beginners and continuing watercolor class, Monday Nights: Aug. 21, 28 and Sept. 11, 6-9 p.m., Fee \$105.

Waseca Art Center, 410 N. State St. (507) 835-1701 or www.wasecaartscouncil.org Youth Art Camp: July 31-August 4, 10 a.m. to noon, \$50, students grades 2 and up. Wednesday morning adult groups: Outdoor Drawing 9-10:45 a.m., and Art Appreciation 11-11:45 a.m., and July 19th Art Appreciation Discussion (bring your own print, painting or art to share) 11 a.m. to 12 noon.

FALL & WINTER 2006

« « COLLEGE ARTS EVENTS » »

Please refer to their websites for dates

Bethany Lutheran College, Mankato

www.blc.edu

Ylvisaker Fine Arts Center Hours: 1-9 p.m.
Sun.-Thurs. & 1-5 p.m. Fri.-Sat. (507) 344-7365
Concerts/Plays: (507) 344-7365 for tickets

Gustavus Adolphus College, St. Peter

www.gac.edu

Call (507) 933-7598 or 933-7520 for info.
The **Hillstrom Museum of Art** is open, free of charge, to the public. Gallery Hours: 9 a.m.-4 p.m. weekdays & 1-5 p.m. weekends.

Martin Luther College, New Ulm

www.mlcforum.org

MLC box office (507) 233-9114

Minnesota State University, Mankato

www.mnsu.edu or www.MSUTheater.com

Theater Department Information 389-6661

Good Thunder Reading Series 389-1354

Conkling Gallery 389-6412

Music Performance Series: 389-2118

♦ The Arts: A Driving Force in Minnesota's Economy ♦

The Arts and Culture Economic Impact Study was completed by the Forum of Regional Arts Councils of Minnesota and Minnesota Citizens for the Arts in March 2006 and presented to Legislators at the MN State Capital at Arts Advocacy Day. For the first time ever, eleven regional studies as well as a statewide study measuring the economic impact of arts and culture organizations and audiences has been produced.

It shows that in Minnesota, the arts and culture are a significant industry with \$838.5 Million in Annual Economic Impact supporting over 22,000 Minnesota Jobs. In addition, every Region of the state, no matter how rural, had **at least \$1 million** in economic impact from the nonprofit arts and culture. Their arts and culture economies ranged from \$1 million to \$8.3 million.

This new research also provides data on the strength of the nonprofit arts and culture industry in regional population centers such as the areas that include **Duluth, Rochester, Fargo-Moorhead, St. Cloud, and Mankato** which have the second through sixth largest arts economies in the state, respectively. **Their cultural economies range from \$9 to \$31 million dollars per year.**

The nonprofit arts and culture industry is bringing new people to these regions, giving energy to thriving tourism industries and are important economic drivers in regional economies. This study alters the perception that the arts are luxuries worth supporting in prosperous times but hard to justify when the economy is struggling. At a time when governments at all levels are making tough budget choices, this study sends an important message: that support for the arts does not come at the expense of economic development.

When we increase our investment in the arts, we are not supporting a frill or a luxury. Rather, an industry that supports jobs, generates government revenue, and is the cornerstone of tourism and economic development.

The report for the 9-county area of south central Minnesota that Prairie Lakes serves (referred to as Region 9) was presented at a public meeting in Mankato on March 16th.

Of the eleven regional areas surveyed in MN, Region 9 has the second highest percentage of audience members who reside within the region (81.8%), and the third highest total attendance to arts events (572,208). These figures show that Region 9 is doing an exceptional job of providing attractive arts and culture activities to its residents, keeping people in the region to spend their arts and culture dollars rather than venturing out of the area. Region 9 also had the third largest number of arts and culture organizations responding to the survey, and recorded 1,843 volunteers donating time to these organizations.

Region 9

Total Impact of Nonprofit Arts Industry

(includes organization and audience expenditures)

Total Expenditures:	\$8,883,272
Full-Time Equivalent Jobs:	248
Resident Household Income:	\$4,538,000
Local Government Revenue	\$273,000
State Government Revenue	\$816,000



Region 9 -Arts and culture organizations: **123**

Audience economic impact: **\$6,196,826**

Organization economic impact: **\$2,686,446**

Total economic impact: \$8,883,272

Region 9's 2004 population: 226,659

Region's percentage of state's population: 4.41%

Number of arts and culture organizations survey in region: 123

Percentage of organizations that responded: 28%

Number of arts/culture events whose audiences were surveyed: 10

Number of individual audience member survey collected: 647

♦The average arts attendee in Region 9 spends \$10.83 above the cost of admission



**The Regional and Statewide
Arts Economic Impact data**

**can be viewed at
www.mtn.org/mca**

Prairie Lakes Regional Arts Council

111 2nd Avenue NE

Waseca, MN 56093-2905

(507) 833-8721 or (800) 298-1254

plrac@hickorytech.net ♦ www.plrac.org

NON-PROFIT
ORGANIZATION
US POSTAGE PAID
WASECA, MN
PERMIT NO. 260

Address Service Requested**PLEASE SEND US YOUR EMAIL ADDRESS**

We will primarily be contacting constituents by email, in order to reduce our postage costs in 2006-07. This applies to grant applications, final reports, art exhibition and notifying you when a new newsletter is posted to the website at www.plrac.org

To be added to our mailing list call 1-800-298-1254 or email: plrac@hickorytech.net

This newsletter is funded by a grant from INSTY-PRINTS, Owatonna, as part of their "2006 Shine Fund Award" to non-profit organizations, helping them and the community shine a little brighter and helping to make it a better place to live and work.

Join us... August 3 and August 10

Room 104, Ylvisaker Fine Arts Center, Bethany Lutheran College, 700 Luther Drive, Mankato

*Artists, Art Educators, and
Community Arts Organizations*

Regional Arts ForumThursday, August 3, 6:00 – 8:00 p.m.

The MN State Arts Board will gather input and ideas for the NEA-funded programs in Minnesota; and gather input regarding priorities and/or areas of focus for 2008-2009 legislative funding. Participants can provide feedback on MN State Arts Board and Prairie Lakes Regional Arts Council programs and find out more about grants available from their arts staff.

*If you are unable to attend, but are interested in any
Arts Board programs contact 1-800-866-2787 or
amy.frimpong@arts.state.mn.us, www.arts.state.mn.us*

Grantwriting Workshop

Artists, Arts Organizations,
Community Groups & Schools

Thursday, August 10

6:00 -7:00 p.m. Artists

7:00 -8:00 p.m. Arts Organizations, Schools & Community Groups

Find out more about Prairie Lakes Arts Council Grant Programs: what art projects qualify, how to complete the application, the review process, and much more.

Everyone is welcome to attend both FREE events, pre-registration is preferred since refreshments will be served. Contact Brenda Flintrop, Exec. Director, PLRAC, 1-800-298-1254 or plrac@hickorytech.net

09/12/06

Prairie Lakes Regional Arts Council, Inc.

Balance Sheet

As of June 30, 2006

Jun 30, '06

ASSETS

Current Assets

Checking/Savings

110 · Checking 1,196.50

120 · Treasury Rate Investments 39,741.13

130 · Certificate of Deposits 30,000.00

Total Checking/Savings 70,937.63

Total Current Assets 70,937.63

Fixed Assets

150 · Property & Equipment 11,300.22

160 · Accumulated Depreciation -9,743.93

Total Fixed Assets 1,556.29

TOTAL ASSETS

72,493.92

LIABILITIES & EQUITY

Liabilities

Current Liabilities

Other Current Liabilities

211 · Fiscal Agent Payable-Kane 107.60

211-2 · Fiscal Agent Payable-Young 1,000.00

Total Other Current Liabilities 1,107.60

Total Current Liabilities 1,107.60

Long Term Liabilities

244 · Grants Comm State 2005 945.00

245 · Grants Comm McKnight 2005 1,000.00

246 · Grants Comm State 2006 27,918.04

247 · Grants Comm. McKnight 2006 2,600.00

Total Long Term Liabilities 32,463.04

Total Liabilities 33,570.64

Equity

300 · Fund Balance Unrestricted 33,378.52

Net Income 5,544.76

Total Equity 38,923.28

TOTAL LIABILITIES & EQUITY

72,493.92

09/12/06

Prairie Lakes Regional Arts Council, Inc.

Profit & Loss

July 2005 through June 2006

Jul '05 - Jun '06

Income

410 · Grants

410-1 · Grant MN Legislature	143,175.00
410-2 · Grant McKnight Funds	38,000.00
410-3 · Grant Minnegasco	7,000.00

Total 410 · Grants	188,175.00
--------------------	------------

420 · Interest Revenue

421 · Interest Revenue Checking	8.60
422 · Interest Revenue Treasury Rate	1,169.92
423 · Interest Revenue CD	2,425.54

Total 420 · Interest Revenue	3,604.06
------------------------------	----------

430 · Other Income

431 · Art Exhibition Entry Fees	2,095.00
434 · Miscellaneous	1,339.00
437 · Prairie Ecology Bus Center	2,000.00
438 · Carl & Verna Schmidt Foundation	3,000.00

Total 430 · Other Income	8,434.00
--------------------------	----------

Total Income	200,213.06
--------------	------------

Expense

510 · Salaries

510-1 · Grant State Salaries	14,279.61
510-11 · Non-Grant State Salaries	12,857.91
510-2 · Grant McKnight Salaries	8,125.39
510-4 · Fundraising Salaries	697.76
610 · General Administration Salaries	20,403.11

Total 510 · Salaries	56,363.78
----------------------	-----------

511 · Payroll Taxes

511-1 · Grant State Payroll Taxes	1,084.31
511-11 · Non-Grant State Payroll Taxes	1,030.02
511-2 · Grant McKnight Payroll Taxes	575.61
511-4 · Fundraising Payroll Taxes	53.38
611-11 · General Admin Payroll Taxes	1,567.64
511 · Payroll Taxes - Other	-0.09

Total 511 · Payroll Taxes	4,310.87
---------------------------	----------

514 · Grant

514-1 · Grants - State	67,000.00
514-2 · Grants - McKnight	24,070.00

Total 514 · Grant	91,070.00
-------------------	-----------

521 · Travel, Meals and Lodging

521-1 · Grant State Travel Meals Lodge	1,514.77
521-11 · Non-Grant State TravelMealLodge	17.17
521-2 · Grant McK Travel Meals Lodge	111.33
621 · Gen Admin Travel Meals Lodge	-8.61

Total 521 · Travel, Meals and Lodging	1,634.66
---------------------------------------	----------

09/12/06

Prairie Lakes Regional Arts Council, Inc.

Profit & Loss

July 2005 through June 2006

Jul '05 - Jun '06

522 · Council Travel & Meals	
522-1 · Grant State Council Travel Meal	1,133.51
522-2 · Grant McK Council Travel Meals	293.60
Total 522 · Council Travel & Meals	1,427.11
523 · Meeting Expense	
523-1 · Grant State Meeting Expense	686.08
523-2 · Grant McKnight Meeting Expense	291.30
523 · Meeting Expense - Other	5.00
Total 523 · Meeting Expense	982.38
524 · Telephone	
524-1 · Grant State Telephone	219.58
524-11 · Non-Grant State Telephone	177.04
524-2 · Grant McKnight Telephone	215.88
524-4 · Fundraising Telephone	23.11
624 · General Admin Telephone	439.17
Total 524 · Telephone	1,074.78
525 · Postage	
525-1 · Grant State Postage	301.65
525-11 · Non-Grant State Postage	269.27
525-2 · Grant McKnight Postage	101.60
625 · General Administration Postage	139.47
Total 525 · Postage	811.99
527 · Office Supplies	
527-1 · Grant State Office Supplies	193.94
527-11 · Non-Grant State Office Supplies	313.35
527-2 · Grant McKnight Office Supplies	149.10
527-4 · Fundraising Office Supplies	9.04
627 · General Admin Office Supplies	341.36
Total 527 · Office Supplies	1,006.79
528 · Computer/Copier Supplies/Maint	
528-1 · Grant StateComputerCopierSupply	313.48
528-11 · Non-Grant State ComputerCopier	250.73
528-2 · Grant McK ComputerCopierSupply	243.48
528-4 · Fundraising ComputerCopierSuppl	17.74
628 · Gen Admin ComputerCopierSupply	426.19
Total 528 · Computer/Copier Supplies/Maint	1,251.62
529 · Publicity	
629 · General Admin Publicity	22.65
Total 529 · Publicity	22.65

09/12/06

Prairie Lakes Regional Arts Council, Inc.
Profit & Loss
July 2005 through June 2006

	Jul '05 - Jun '06
530 · Rent	
530-1 · Grants State Rent	1,435.20
530-11 · Non-Grant State Rent	828.00
530-2 · Grant McKnight Rent	662.40
530-4 · Fundraising Rent	110.40
630 · General Administration Rent	2,097.60
Total 530 · Rent	5,133.60
532 · Insurance (Worker's Comp)	
532-1 · Grant State Ins Workers Comp	68.42
532-11 · Non-Grant State Ins Work Comp	62.20
532-2 · Grant McK Ins Workers Comp	46.65
632 · Gen Admin Ins Workers Comp	133.73
Total 532 · Insurance (Worker's Comp)	311.00
533 · Insurance (Property)	
533-1 · Grant State Insurance Property	79.86
533-11 · Non-Grant State Ins Property	72.60
533-2 · Grant McKnight Ins Property	54.45
633 · General Admin Ins Property	156.09
Total 533 · Insurance (Property)	363.00
534 · Audit / Professional	
534-1 · Grant State Audit/Professional	318.00
534-11 · Non-Grant State Audit/Professio	132.50
534-2 · Grant McK Audit / Professional	159.00
534-4 · Fundraising Audit/Professional	132.50
634 · Gen Admin Audit/Professional	477.00
Total 534 · Audit / Professional	1,219.00
535 · Professional Membership	
635 · Gen Admin Prof Membership	340.00
Total 535 · Professional Membership	340.00
536 · Internet	
536-1 · Grant State Internet	157.78
536-11 · Non-Grant State Internet	197.23
536-2 · Grant McKnight Internet	118.34
636 · General Administration Internet	284.73
Total 536 · Internet	758.08
539 · Miscellaneous Expense	
639 · Gen Admin Misc Expense	144.00
539 · Miscellaneous Expense - Other	65.26
Total 539 · Miscellaneous Expense	209.26
540 · Depreciation	1,095.20

09/12/06

Prairie Lakes Regional Arts Council, Inc.

Profit & Loss

July 2005 through June 2006

Jul '05 - Jun '06

542 · Benefit	
542-1 · State Grant Benefits	3,811.00
542-11 · Non-Grant State Benefit	621.00
542-2 · Grant McKnight Benefit	276.00
542-4 · Fundraising Benefit	138.00
642 · General Administration Benefit	2,622.00
Total 542 · Benefit	7,468.00
550 · McK Art Exhibition	
510-3 · Salaries Exhibition Coordinate	7,558.76
511-3 · Art Exhibition Payroll Taxes	579.18
516-3 · Honoraria-Juror/Facility	1,571.23
517-3 · Art Exhibition Awards	3,290.00
518-3 · Art Exhibition Bus-Travel Exp	752.58
521-3 · Art Exhibit Travel Meal Lodge	320.12
522-3 · Art Exhibition Cncl Travel Meal	303.29
524-3 · Art Exhibition Telephone	80.89
525-3 · Art Exhibition Postage	580.94
526-3 · Art Exhibition Copy & Printing	1,158.65
527-3 · Art Exhibition Supplies	30.50
528-3 · Art Exhibition ComputerCopierSu	44.33
529-3 · Art Exhibition Publicity	305.04
530-3 · Art Exhibition Rent	386.40
534-3 · Art Exhibition Audit/Profession	106.00
536-3 · Art Exhibition Internet	54.45
542-3 · Art Exhibition Benefit	207.00
546-3 · Art Exhibition Reception/Food	485.17
Total 550 · McK Art Exhibition	17,814.53
6999 · Uncategorized Expenses	0.00
Total Expense	194,668.30
Net Income	<u>5,544.76</u>