

Agency Purpose

Mayo Clinic aspires to provide the highest quality, compassionate patient care at a reasonable cost through a physician-led team of diverse people working together in clinical practice, education, and research in a unified multi-campus system.

Mayo aims to conduct its interdependent programs of medical care, research, and education in keeping with the highest standards of ethics and quality. Fundamental to this pledge is the need to combine the science and art of medicine and technology with personalized care. Excellence in all endeavors with respect for the individual — both patient and employee — is the primary goal.

Core Functions

Mayo Clinic operates clinics and hospitals in three locations: Jacksonville, Florida; Rochester, Minnesota; and Scottsdale, Arizona. The Mayo Clinic actively engages in competitive, prioritized, coordinated research programs, which enhance the care of the patient and decrease the burden of disease. In addition to patient care and research activities, Mayo Clinic provides education in the medical sciences amidst a scholarly environment. Mayo Clinic's education of future physicians, medical scientists, and allied health staff contributes to the quality of healthcare at Mayo Clinic and in communities throughout the state of Minnesota and worldwide. The educational activities of Mayo Clinic staff are a key component of Mayo's continuing excellence.

Operations

Mayo clinics and hospitals served more than a half-million patients in 2005. The state of Minnesota has provided Mayo Medical School with financial aid for its Minnesota students in the form of capitation support since the opening of the school in 1972. In the FY 2004–05 biennium each Minnesota student has received \$14,405 per year in state funding to reduce the cost of tuition.

The Mayo School of Graduate Medical Education Family Practice Program was established in 1978. The program prepares the prospective family physician for primary care practice in all settings with a special emphasis on rural and underserved communities. Funding provided by the state of Minnesota offsets by approximately \$22,125 the cost of resident stipends that average \$41,144 per year.

Budget

Income from current activities, the best indicator of Mayo Clinic's success in funding its overall mission, was \$275 million in 2005. Mayo Clinic continues to invest in education and research. Total commitment to education was \$165 million in 2005, with Mayo funds accounting for \$123 million of this amount. Total expenditure on research reached \$402 million in the same year. Mayo contributed \$132 million to research endeavors.

At A Glance

- ◆ Patient Care – Physicians, scientists, and allied health staff collaboratively providing healthcare.
- ◆ Medical Education – one of the largest graduate education centers in the country, training physicians in more than 100 specialties.
- ◆ Research – Strong biomedical research programs in both basic and patient oriented area.
- ◆ Over 55% of the 1,227 graduates of Mayo Medical School are Minnesotans.
- ◆ The Mayo Family Practice Residency Program has graduated over 170 physicians. Consistently, over half of these doctors choose to practice in Minnesota.

Contact

Mayo Clinic
 200 First Street Southwest
 Rochester, Minnesota 55906
 Phone: (507) 284-2511
 Website: <http://www.mayo.edu>

Dollars in Thousands

	Current		Forecast Base		Biennium 2008-09
	FY2006	FY2007	FY2008	FY2009	
<u>Direct Appropriations by Fund</u>					
General					
Current Appropriation	1,391	1,391	1,391	1,391	2,782
Forecast Base	1,391	1,391	1,045	1,045	2,090
Change		0	(346)	(346)	(692)
% Biennial Change from 2006-07					-24.9%
<u>Expenditures by Fund</u>					
Direct Appropriations					
General	1,391	1,362	1,045	1,045	2,090
Total	1,391	1,362	1,045	1,045	2,090
<u>Expenditures by Category</u>					
Local Assistance	1,391	1,362	1,045	1,045	2,090
Total	1,391	1,362	1,045	1,045	2,090
<u>Expenditures by Program</u>					
Mayo Medical School	514	514	514	514	1,028
Mayo Family & Residency	531	531	531	531	1,062
St Cloud Hospital/Family Med	346	317	0	0	0
Total	1,391	1,362	1,045	1,045	2,090

Program Description

The mission of the Mayo Medical School is to use the patient centered focus and strengths of the Mayo Clinic to educate physicians to serve society by assuming leadership roles in medical practice, education and research. A newly revised curriculum is designed to foster the individual strengths and talents of each student, and to take full advantage of the unique integrated research, education and practice resources of Mayo Clinic. The school seeks to provide access to a medical education to all students regardless of socioeconomic background. The school also strives to promote and eliminate barriers that may inhibit students from entering the historically lower paying primary care specialties. Finally, Mayo Medical School provides students the opportunity to obtain an excellent medical education that is delivered in a cost efficient manner, and allows these students to graduate unencumbered by a large debt-load.

Program at a Glance

As of July 2005:

- ◆ 55% of matriculants to the Mayo Medical School were from Minnesota.
- ◆ 25% of Mayo Medical School graduates are practicing medicine in Minnesota.

Population Served

Graduates of undergraduate colleges and universities who are seeking a high quality, affordable medical education are served by this activity.

Services Provided

Mayo Medical School (MMS) was founded in 1972. The small class size, 42 students per class, facilitates a personalized course of instruction characterized by extensive clinical interaction and the integration of basic and clinical sciences throughout all segments of the curriculum. A balance is sought to produce physicians interested in medical subspecialties as well as the primary care disciplines of general internal medicine, family medicine, pediatrics, and obstetrics/gynecology. As part of their education, each Mayo Medical School student lives with a family practice physician who is in private practice in a rural Minnesota community to experience first-hand the challenges and rewards of primary care medicine.

Historical Perspective

Mayo Medical School has graduated 1,227 physicians since 1976 and of those, 447 (36%) currently practice medicine in Minnesota. Of the 669 graduates who were originally from Minnesota (and received capitation grants), 310 (46%) have stayed to practice in Minnesota. Since 1972, the legislature has provided grants to Minnesota residents. These capitation grants provided by the state are used to offset tuition paid by Minnesota medical school students. All state monies are directly given to Minnesota students to reduce their tuition payment. Tuition for 2005-2006 is \$24,500. The FY 2004 state appropriation provided capitation grants of \$12,850 for up to 40 students.

Key Measures

- ⇒ As of July 2005, 628 (55%) of the total matriculants to Mayo Medical School were Minnesota residents.
- ⇒ 40% is the five-year average for Mayo Medical School graduates entering primary care residency programs.
- ⇒ As of July 2005, 447 (36%) total graduates of Mayo Medical School are practicing medicine in Minnesota

Number of Mayo Medical School Graduates Choosing Primary Care Residency Training Programs

Graduates of MMS 2002	Graduates of MMS 2003	Graduates of MMS 2004	Graduates of MMS 2005	Graduates of MMS 2006
14 for 36%	19 for 44%	14 for 35%	18 for 47%	14 for 38%

Contact

Assistant Dean Barbara L. Porter
Mayo Medical School
200 First Street Southwest
Rochester, Minnesota 55906
Phone: (507) 284-3627
Fax: (507) 284-2634
E-mail: bporter@mayo.edu

MAYO CLINIC

Program: MAYO MEDICAL SCHOOL

Program Summary

Dollars in Thousands

	Current		Forecast Base		Biennium
	FY2006	FY2007	FY2008	FY2009	2008-09
<u>Direct Appropriations by Fund</u>					
General					
Current Appropriation	514	514	514	514	1,028
Forecast Base	514	514	514	514	1,028
<u>Expenditures by Fund</u>					
Direct Appropriations					
General	514	514	514	514	1,028
Total	514	514	514	514	1,028
<u>Expenditures by Category</u>					
Local Assistance	514	514	514	514	1,028
Total	514	514	514	514	1,028
<u>Expenditures by Activity</u>					
Mayo Medical School	514	514	514	514	1,028
Total	514	514	514	514	1,028

Program Description

The Mayo Department of Family Medicine Residency program educates and inspires medical school graduates to pursue careers as family physicians. The program emphasizes training in rural primary care augmented by subspecialty training.

Population Served

In the last 25 years, the program has provided the state of Minnesota with 90 family physicians, with 41% of these practicing in rural communities. The program is located at the Mayo Family Clinic – Kasson, a rural community in Dodge County, serving a population area of close to 18,000.

Program at a Glance

- ◆ Trains family medicine physicians.
- ◆ 52% of program graduates are practicing in Minnesota.
- ◆ 22% practice in rural areas in Minnesota.
- ◆ Graduating residents consistently score above average on board exams. The pass rate on the first attempt is 99%.

Services Provided

The residency training program prepares the prospective family physician for primary care medicine in all settings, with special emphasis on rural or smaller communities. The residents-in-training spend a major portion of their training providing ambulatory, primary, and continuity care to patients. The residents participate fully in the department’s population management initiatives to improve the quality, and decrease the cost, of employee/dependent healthcare.

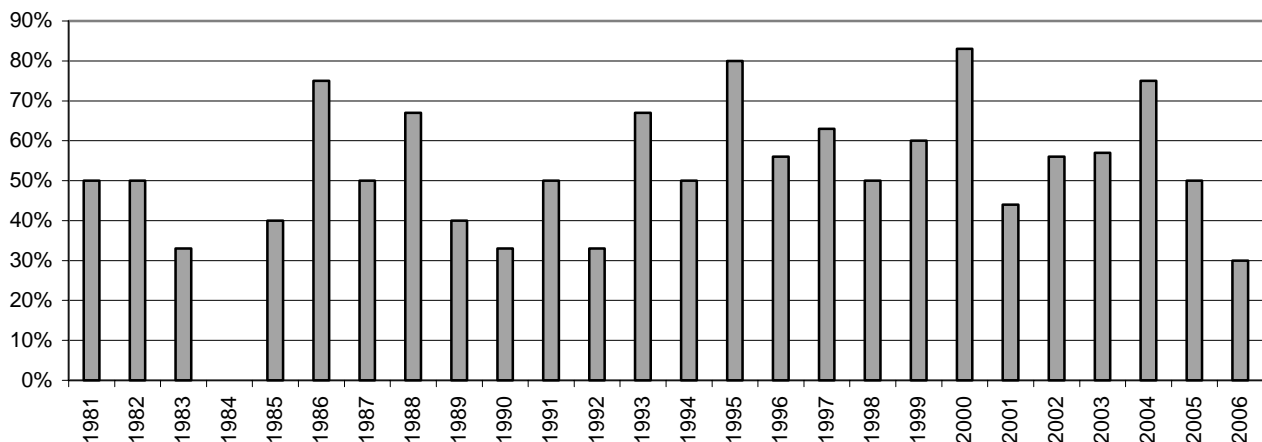
Historical Perspective

The three-year training program was established in 1978, beginning with four residents. It has included a maximum of 25 resident trainees. Over time it has grown in size and success, with all training positions being filled for the past 25 years. The program has graduated 172 family physicians. The Minnesota capitation appropriation has supported residents’ training stipends since 1978-79.

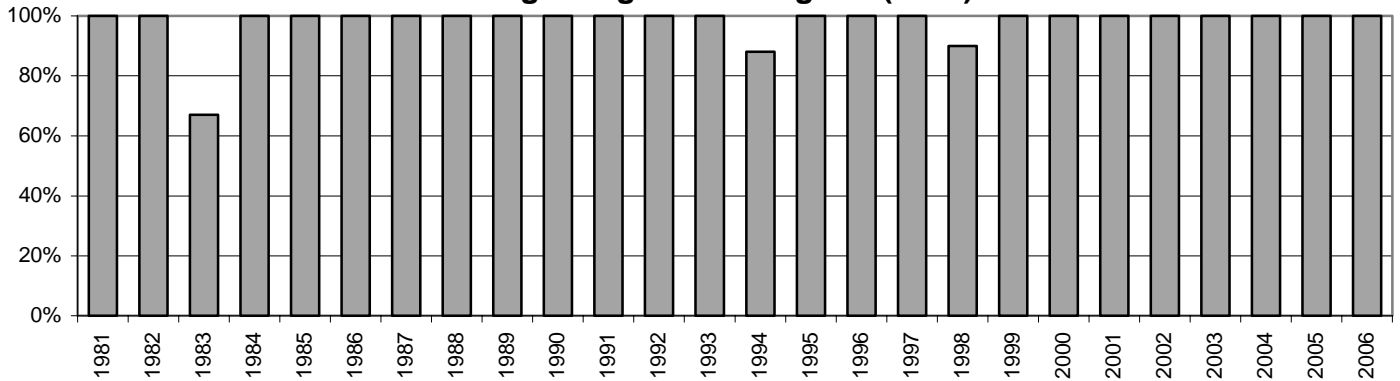
Key Measures

- ⇒ Percent of Family Medicine Graduates Practicing in Minnesota
- ⇒ Graduates Practicing in Family Medicine Since Program Beginning

Family Medicine Graduates Practicing in Minnesota



Graduates Practicing in Family Medicine Since the Beginning of the Program (1981)



Program Funding

The program’s calendar year 2005 operating expenses were \$2.2 million. That year the Mayo Clinic supported 76% of the program and the state capitation appropriation of \$531,000 supported 24% of the program cost. The appropriation for the 2004-05 biennium was \$531,000 each year. That state funding supported \$22,125 of the stipend for each of the 24 residents.

Contact

Dr. Robert T. Flinchbaugh
 Residency Program Director
 200 First Street South West
 Rochester, Minnesota 55906
 Phone: (507) 284-6805
 E-mail: flinchbaugh.robert@mayo.edu

Mark Rieder
 Administrator
 200 First Street South West
 Rochester, Minnesota 55906
 Phone: (507) 284-2904
 E-mail: rieder.mark@mayo.edu

MAYO CLINIC

Program: MAYO FAMILY & RESIDENCY

Program Summary

Dollars in Thousands

	Current		Forecast Base		Biennium
	FY2006	FY2007	FY2008	FY2009	2008-09
<u>Direct Appropriations by Fund</u>					
General					
Current Appropriation	531	531	531	531	1,062
Forecast Base	531	531	531	531	1,062
<u>Expenditures by Fund</u>					
Direct Appropriations					
General	531	531	531	531	1,062
Total	531	531	531	531	1,062
<u>Expenditures by Category</u>					
Local Assistance	531	531	531	531	1,062
Total	531	531	531	531	1,062
<u>Expenditures by Activity</u>					
Mayo Family & Residency	531	531	531	531	1,062
Total	531	531	531	531	1,062

MAYO CLINIC

Program: ST CLOUD HOSPITAL/FAMILY MED

Program Summary

Dollars in Thousands

	Current		Forecast Base		Biennium 2008-09
	FY2006	FY2007	FY2008	FY2009	
<u>Direct Appropriations by Fund</u>					
General					
Current Appropriation	346	346	346	346	692
Technical Adjustments					
Transfers Between Agencies			(346)	(346)	(692)
Forecast Base	346	346	0	0	0
<u>Expenditures by Fund</u>					
Direct Appropriations					
General	346	317	0	0	0
Total	346	317	0	0	0
<u>Expenditures by Category</u>					
Local Assistance	346	317	0	0	0
Total	346	317	0	0	0
<u>Expenditures by Activity</u>					
St Cloud Hospital/Family Med	346	317	0	0	0
Total	346	317	0	0	0