

**Local Government Correctional Service Retirement Fund**

*Actuarial Valuation and Review  
as of July 1, 2006*

**Copyright © 2006**

**THE SEGAL GROUP, INC.,  
THE PARENT OF THE SEGAL COMPANY  
ALL RIGHTS RESERVED**



The Segal Company  
6300 S. Syracuse Way, Suite 750 Englewood, CO 80111  
T 303.714.9900 F 303.714.9990 www.segalco.com

*November 8, 2006*

*Ms. Mary Most Vanek  
Public Employees Retirement Association of Minnesota  
Local Government Correctional Service Retirement Fund  
60 Empire Drive, Suite 200  
St. Paul, Minnesota 55103-2088*

*Dear Ms. Most Vanek:*

*We are pleased to submit this Actuarial Valuation and Review as of July 1, 2006. It summarizes the actuarial data used in the valuation, establishes the funding requirements for fiscal 2007 and analyzes the preceding year's experience.*

*The census and financial information on which our calculations were based was prepared by the Public Employees' Retirement Association of Minnesota. That assistance is gratefully acknowledged. The actuarial calculations were completed under our supervision.*

*This actuarial valuation has been completed in accordance with generally accepted actuarial principles and practices. To the best of our knowledge, the information supplied in this actuarial valuation is complete and accurate. Further, in our opinion, the assumptions used in the valuation are consistent with those in the statute, and reasonably represent the experience of the plan.*

*Sincerely,*

*THE SEGAL COMPANY*

By: \_\_\_\_\_  
*Thomas D. Levy, FSA, MAAA, EA      Andre Latia, FSA, MAAA, EA      Susan M. Hogarth, MAAA, EA*  
*Senior Vice President and Chief Actuary      Senior Vice President and Consulting Actuary      Consulting Actuary*

cc: *Legislative Commission on Pensions and Retirement (3 copies)*  
*Minnesota Legislative Reference Library (6 copies)*  
*Minnesota Department of Finance (2 copies)*

## SECTION 1

### VALUATION SUMMARY

Purpose .....	i
Significant Issues in Valuation Year.....	ii
Summary of Key Valuation Results.....	iii

## SECTION 2

### VALUATION RESULTS

A. Member Data .....	1
B. Financial Information.....	4
C. Actuarial Experience.....	5
D. Information Required by the GASB.....	6

## SECTION 3

### SUPPLEMENTAL INFORMATION

EXHIBIT A Table of Plan Coverage .....	7
EXHIBIT B Members in Active Service as of June 30, 2006 .....	8
EXHIBIT C Retired Participants as of June 30, 2006 .....	9
EXHIBIT D Disabled Members as of June 30, 2006 .....	10
EXHIBIT E Beneficiaries as of June 30, 2006..	11
EXHIBIT F Reconciliation of Member Data.....	12
EXHIBIT G Summary Statement of Income and Expenses on a Market Value Basis for Year Ended June 30, 2006.....	13
EXHIBIT H Table of Financial Information for Year Ended June 30, 2006.....	14
EXHIBIT I Development of the Fund Through June 30, 2006 .....	15
EXHIBIT J Development of Unfunded/(Overfunded) Actuarial Accrued Liability for Year Ended June 30, 2006 .....	16
EXHIBIT K Definitions of Pension Terms .....	17

## SECTION 4

### REPORTING INFORMATION

EXHIBIT I Summary of Actuarial Valuation Results .....	19
EXHIBIT II Actuarial Balance Sheet.....	21
EXHIBIT III Supplementary Information Required by the GASB – Schedule of Employer Contributions .....	22
EXHIBIT IV Supplementary Information Required by the GASB – Schedule of Funding Progress .....	23
EXHIBIT V Determination of Contribution Sufficiency .....	24
EXHIBIT VI Supplementary Information Required by the GASB .....	25
EXHIBIT VII Actuarial Assumptions and Actuarial Cost Method .....	26
EXHIBIT VIII Summary of Plan Provisions.....	30

## **SECTION 1: Valuation Summary for the Local Government Correctional Service Retirement Fund**

---

### **Purpose**

This report has been prepared by The Segal Company to present a valuation of the Public Employees Retirement Association of Minnesota (Local Government Correctional Service Retirement Fund) as of July 1, 2006. The valuation was performed to determine whether the assets and contributions are sufficient to provide the prescribed benefits. The contribution requirements presented in this report are based on:

- Section 356.215 of the Minnesota Statutes;
- The benefit provisions of the Retirement Fund, as administered by the PERA;
- The data as provided and confirmed by the PERA staff;
- The characteristics of covered active members, inactive vested members, pensioners and beneficiaries as of July 1, 2006, provided by the Fund;
- The assets of the Fund as of June 30, 2006, provided by the Fund;
- Economic assumptions regarding future salary increases and investment earnings; and
- Other actuarial assumptions regarding employee terminations, retirement, death, etc.

## SECTION 1: Valuation Summary for the Local Government Correctional Service Retirement Fund

---

### Significant Issues in Valuation Year

The following key findings were the result of this actuarial valuation:

- The statutory contribution rate under Chapter 353E is equal to 14.58% of payroll compared to the required contribution rate under Chapter 356 of 12.68% of payroll. Therefore, statutory contributions are sufficient to meet the required contribution rate. The decrease in the required contribution rate from July 1, 2005 (13.05% of payroll) to July 1, 2006 (12.68% of payroll) is due to a couple of events. There was a significant increase in the projected annual payroll from 2005 to 2006, which lowered the required contribution rates as a percent of payroll for 2006. In addition, the unfunded actuarial accrued liability decreased from \$10,770,172 as of July 1, 2005 to \$7,529,873 as of July 1, 2006, hence decreasing the supplemental contribution rate.
- The actuarial accrued liability funded ratio based on the actuarial value of assets over the actuarial accrued liability as of July 1, 2006 is 94.35% compared to 90.11% as of July 1, 2005. The majority of the funded ratio increase from 2005 to 2006 is due to investment gain, increasing the market and actuarial value of assets as of June 30, 2006. This ratio is a measure of funding status, and its history is a measure of funding progress, and is the ratio required to be reported under GASB 25.
- There were no changes in plan provisions, actuarial assumptions or actuarial cost methods since the prior valuation.

## SECTION 1: Valuation Summary for the Local Government Correctional Service Retirement Fund

### Summary of Key Valuation Results

	2006	2005
<b>Contributions (% of payroll) for plan year beginning July 1:</b>		
Statutory – Chapter 353E	14.58%	14.58%
Required – Chapter 356	12.68%	13.05%
Sufficiency/(Deficiency)	1.90%	1.53%
<b>Funding elements for plan year beginning July 1:</b>		
Normal cost	\$17,134,103	\$15,908,607
Market value of assets	131,696,690	100,874,878
Actuarial value of assets (AVA)	125,775,917	98,155,975
Actuarial accrued liability (AAL)	133,305,790	108,926,147
Unfunded/(Overfunded) actuarial accrued liability	7,529,873	10,770,172
<b>Funded ratios:</b>		
<u>Accrued Benefit Funded Ratio</u>	104.19%	99.88%
Current assets (AVA)	\$125,775,917	\$98,155,975
Current benefit obligations	120,717,463	98,278,594
<u>Projected Benefit Funded Ratio</u>	113.37%	111.79%
Current and expected future assets	\$308,444,067	\$267,531,642
Current and expected future benefit obligations (Present Value of Benefits)	272,069,496	239,306,986
<b>GASB 25/27 for plan year beginning July 1:</b>		
Annual employer required contributions	\$8,506,632	\$8,068,439
Accrued Liability Funded Ratio (AVA/AAL)	94.35%	90.11%
Covered Actual Payroll	\$125,189,428	\$116,848,904
<b>Demographic data for plan year beginning July 1:</b>		
Number of pensioners and beneficiaries	223	180
Number of vested terminated members	1,100	915
Number of other non-vested terminated members	1,086	906
Number of active members	3,531	3,352
Total projected payroll*	\$141,083,054	\$129,231,426
Average projected compensation*	39,956	38,554

\* Calculated as covered actual payroll, projected one year with salary scale.

**SECTION 2: Valuation Results for the Local Government Correctional Service Retirement Fund**

---

**A. MEMBER DATA**

The Actuarial Valuation and Review considers the number and demographic characteristics of covered members, including active members, vested terminated members, pensioners and beneficiaries.

This section presents a summary of significant statistical data on these member groups.

More detailed information for this valuation year and the preceding valuation can be found in Section 3, Exhibits A, B, C, D, E and F.

*A historical perspective of how the member population has changed over the past five valuations can be seen in this chart.*

**CHART 1**  
**Member Population: 2002 – 2006**

<b>Year Ended June 30</b>	<b>Active Members</b>	<b>Vested Terminated Members*</b>	<b>Pensioners and Beneficiaries</b>	<b>Ratio of Non-Actives to Actives</b>
2002	3,270	282	63	0.11
2003	3,155	590	100	0.22
2004	3,251	758	139	0.28
2005	3,352	915	180	0.33
2006	3,531	1,100	223	0.37

\* Excludes terminated members due a refund of employee contributions.

**SECTION 2: Valuation Results for the Local Government Correctional Service Retirement Fund**

**Active Members**

Plan costs are affected by the age, years of service and payroll of active members. In this year's valuation, there were 3,531 active members with an average age of 38.7, average years of service of 4.2 years and average projected compensation of \$39,956. The 3,352 active members in the prior valuation had an average age of 38.8, average service of 3.9 years and average projected compensation of \$38,554.

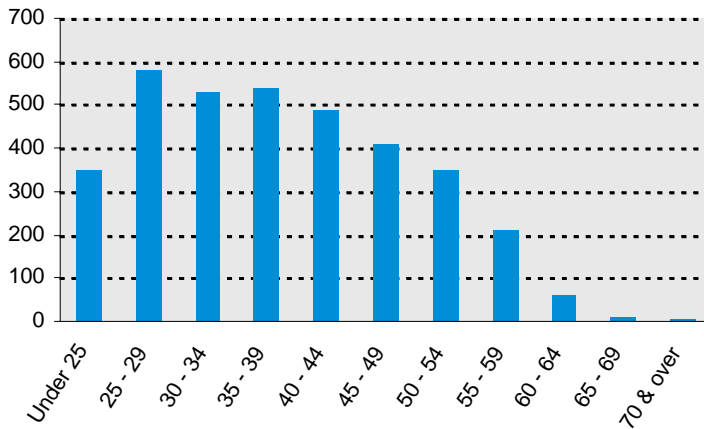
**Inactive Members**

In this year's valuation, there were 1,100 members with a vested right to a deferred or immediate vested benefit.

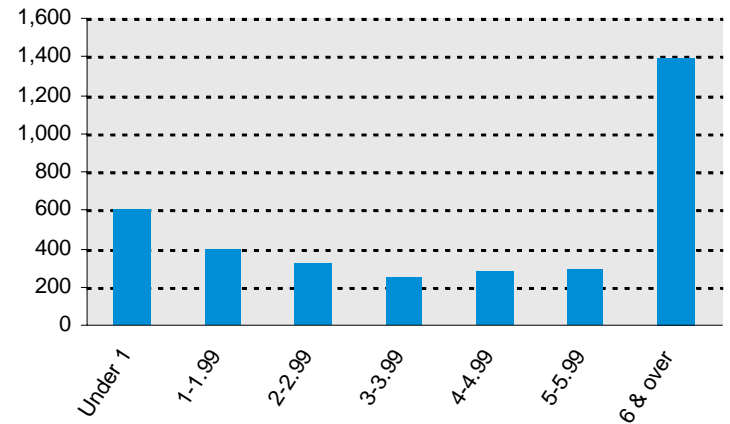
In addition there were 1,086 other non-vested terminated members entitled to a return of their employee contributions.

*These graphs show a distribution of active members by age and by years of service.*

**CHART 2**  
**Distribution of Active Members by Age as of June 30, 2006**



**CHART 3**  
**Distribution of Active Members by Years of Service as of June 30, 2006**





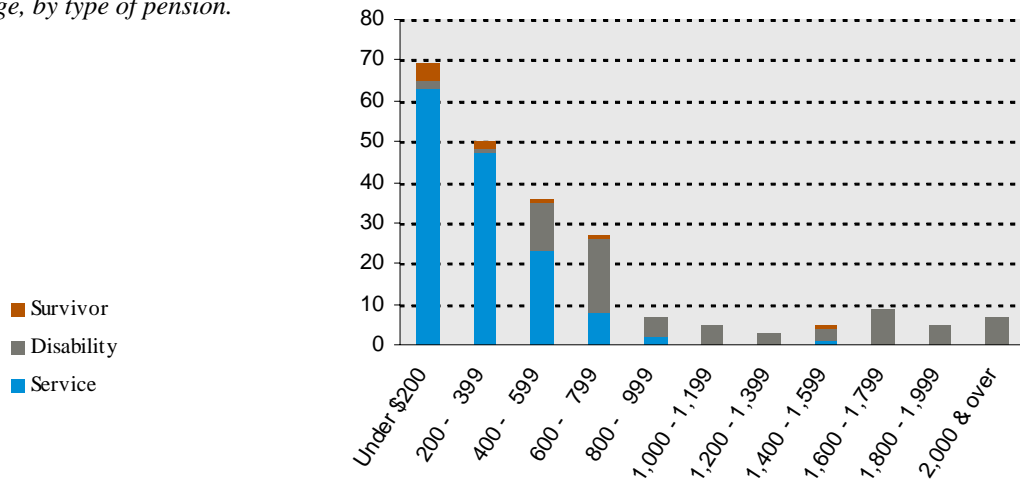
**SECTION 2: Valuation Results for the Local Government Correctional Service Retirement Fund**

**Pensioners and Beneficiaries**

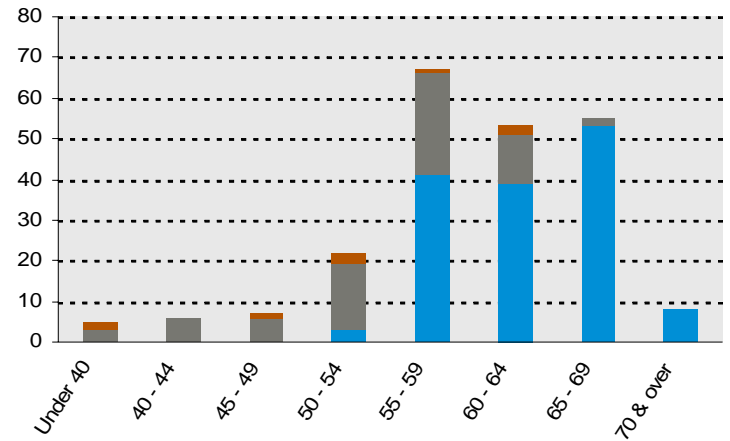
As of June 30, 2006, 214 pensioners (144 retired and 70 disableds) and 9 beneficiaries were receiving monthly benefits of \$122,191. For comparison, in the previous valuation, there were 172 pensioners (113 retired and 59 disableds) and 8 beneficiaries receiving monthly benefits of \$93,927.

*These graphs show a distribution of the current pensioners and beneficiaries based on their monthly amount and age, by type of pension.*

**CHART 4**  
**Distribution of Pensioners and Beneficiaries by Type and by Monthly Amount as of June 30, 2006**



**CHART 5**  
**Distribution of Pensioners and Beneficiaries by Type and by Age as of June 30, 2006**



**SECTION 2: Valuation Results for the Local Government Correctional Service Retirement Fund**

**B. FINANCIAL INFORMATION**

It is desirable to have level and predictable plan costs from one year to the next. For this reason, the Minnesota Statutes require an asset valuation method that gradually adjusts to market value. Under this valuation method, the full value of market fluctuations is not recognized in a single year and, as a result, the asset value and the plan costs are more stable. The amount of the adjustment to recognize market value is treated as income, which may be positive or negative. Realized and unrealized gains and losses are treated equally and, therefore, the sale of assets has no immediate effect on the actuarial value.

Both the actuarial value and market value of assets are representations of the Fund’s financial status. As investment gains and losses are gradually taken into account, the actuarial value of assets tracks the market value of assets. The actuarial asset value is significant because the Fund’s liabilities are compared to these assets to determine what portion, if any, remains unfunded. Amortization of the unfunded actuarial accrued liability is an important element in determining the contribution requirement.

*The chart shows the determination of the actuarial value of assets as of the valuation date.*

**CHART 6**  
**Determination of Actuarial Value of Assets for Year Ended June 30, 2006**

	Original Amount	% Not Recognized	
1. Market value of assets available for benefits			\$131,696,690
2. Calculation of unrecognized return			
(a) Year ended June 30, 2006	\$3,874,605	80%	\$3,099,684
(b) Year ended June 30, 2005	1,967,298	60%	1,180,379
(c) Year ended June 30, 2004	5,905,774	40%	2,362,310
(d) Year ended June 30, 2003	-3,608,000	20%	<u>-721,600</u>
(e) Total unrecognized return			\$5,920,773
3. Actuarial value of assets (“Current Assets”): (1) – (2e)			<u>\$125,775,917</u>
4. Actuarial value as a percent of market value			<u>95.5%</u>

**SECTION 2: Valuation Results for the Local Government Correctional Service Retirement Fund**

---

**C. ACTUARIAL EXPERIENCE**

To calculate the required contribution, assumptions are made about future events that affect the amount and timing of benefits to be paid and assets to be accumulated. Each year actual experience is measured against the assumptions. If overall experience is more favorable than anticipated (an actuarial gain), the contribution requirement will decrease from the previous year. On the other hand, the contribution requirement will increase if overall actuarial experience is less favorable than expected (an actuarial loss).

Taking account of experience gains or losses in one year without making a change in assumptions reflects the belief that the single year's experience was a short-term

development and that, over the long term, experience will return to the original assumptions. For contribution requirements to remain stable, assumptions should approximate experience.

If assumptions are changed, the contribution requirement is adjusted to take into account a change in experience anticipated for all future years.

For the plan year ended June 30, 2006, the total gain is \$872,613, including a gain of \$727,013 from investments and a gain of \$145,600 from all other sources. The net experience variation from individual sources other than investments was 0.11% of the total actuarial accrued liability, which includes age/service retirements, disability, mortality (pre and post-retirement), withdrawal and salary increases.

*This chart provides a summary of the actuarial experience during the past year.*

---

**CHART 7**  
**Actuarial Experience for Year Ended June 30, 2006**

---

1. Net gain/(loss) from investments	\$727,013
2. Net gain/(loss) from other experience	<u>145,600</u>
3. Net experience gain/(loss): (1) + (2)	\$872,613

---

## SECTION 2: Valuation Results for the Local Government Correctional Service Retirement Fund

---

### D. INFORMATION REQUIRED BY THE GASB

Governmental Accounting Standards Board (GASB) reporting information provides standardized information for comparative purposes of governmental pension plans. This information allows a reader of the financial statements to compare the funding status of one governmental plan to another on relatively equal terms.

Critical information to GASB is the historical comparison of the GASB required contribution to the actual contributions. This comparison demonstrates whether a plan is being funded within the range of the GASB reporting requirements. Section 4, Exhibit III presents a schedule of this information of the Fund.

The other critical piece of information regarding the Fund's financial status is the funded ratio. This ratio compares the actuarial value of assets to the actuarial accrued liabilities of the plan as calculated under GASB. High ratios indicate a well-funded plan with assets sufficient to pay most benefits. Lower ratios may indicate recent changes to benefit structures, funding of the plan below actuarial requirements, poor asset performance, or a variety of other factors.

GASB requires that the actuarial value of assets be used to determine the funded ratio, as shown in Section 4, Exhibit IV.

**SECTION 3: Supplemental Information for the Local Government Correctional Service Retirement Fund**

**EXHIBIT A**

**Table of Plan Coverage**

<b>Category</b>	<b>Year Ended June 30</b>		<b>Change From Prior Year</b>
	<b>2006</b>	<b>2005</b>	
<b>Active members in valuation:</b>			
Number	3,531	3,352	5.3%
Average age	38.7	38.8	N/A
Average service	4.2	3.9	N/A
Total projected payroll	\$141,083,054	\$129,231,426	9.2%
Average projected compensation	39,956	38,554	3.6%
Total active vested members	2,218	2,193	1.1%
<b>Vested terminated members</b>	1,100	915	20.2%
<b>Retired participants:</b>			
Number in pay status	144	113	27.4%
Average age	63.3	62.7	N/A
Average monthly benefit	\$268	\$214	25.2%
<b>Disabled members:</b>			
Number in pay status	70	59	18.6%
Average age	54.4	55.1	N/A
Average monthly benefit	\$1,144	\$1,134	0.9%
<b>Beneficiaries:</b>			
Number in pay status	9	8	12.5%
Average age	47.6	45.4	N/A
Average monthly benefit	\$390	\$349	11.7%
<b>Other non-vested terminated members</b>	1,086	906	19.9%

**SECTION 3: Supplemental Information for the Local Government Correctional Service Retirement Fund**

**EXHIBIT B**

**Members in Active Service as of June 30, 2006  
By Age, Years of Service, and Average Projected Compensation**

Age	Years of Service							
	Total	Under 5	5-9	10-14	15-19	20-24	25-29	30 & Over
Under 25	351	351	--	--	--	--	--	--
	\$25,283	\$25,283	--	--	--	--	--	--
25 - 29	581	491	90	--	--	--	--	--
	33,244	31,294	\$43,882	--	--	--	--	--
30 - 34	529	297	232	--	--	--	--	--
	38,857	33,770	45,369	--	--	--	--	--
35 - 39	539	237	302	--	--	--	--	--
	41,712	32,124	49,237	--	--	--	--	--
40 - 44	487	186	301	--	--	--	--	--
	44,563	33,039	51,684	--	--	--	--	--
45 - 49	410	139	271	--	--	--	--	--
	46,315	36,070	51,570	--	--	--	--	--
50 - 54	352	84	268	--	--	--	--	--
	45,671	31,661	50,063	--	--	--	--	--
55 - 59	211	49	162	--	--	--	--	--
	46,988	33,389	51,102	--	--	--	--	--
60 - 64	60	9	51	--	--	--	--	--
	44,284	29,207	46,944	--	--	--	--	--
65 - 69	8	--	8	--	--	--	--	--
	54,850	--	54,850	--	--	--	--	--
70 & over	3	1	2	--	--	--	--	--
	25,911	11,512	33,110	--	--	--	--	--
Total	3,531	1,844	1,687	--	--	--	--	--
	\$39,956	\$31,243	\$49,479	--	--	--	--	--

**SECTION 3: Supplemental Information for the Local Government Correctional Service Retirement Fund**

**EXHIBIT C**

**Retired Participants as of June 30, 2006**

**By Age, Years Retired and Average Annual Benefit**

Age	Years Retired								
	Total	Under 5	5-9	10-14	15-19	20-24	25-29	30-34	35 & over
Under 45	--	--	--	--	--	--	--	--	--
	--	--	--	--	--	--	--	--	--
45 - 49	--	--	--	--	--	--	--	--	--
	--	--	--	--	--	--	--	--	--
50 - 54	3	3	--	--	--	--	--	--	--
	\$2,379	\$2,379	--	--	--	--	--	--	--
55 - 59	41	41	--	--	--	--	--	--	--
	4,256	4,256	--	--	--	--	--	--	--
60 - 64	39	36	3	--	--	--	--	--	--
	3,275	3,506	\$506	--	--	--	--	--	--
65 - 69	53	33	20	--	--	--	--	--	--
	2,556	2,919	1,956	--	--	--	--	--	--
70 - 74	8	2	6	--	--	--	--	--	--
	2,285	1,642	2,499	--	--	--	--	--	--
75 - 79	--	--	--	--	--	--	--	--	--
	--	--	--	--	--	--	--	--	--
80 - 84	--	--	--	--	--	--	--	--	--
	--	--	--	--	--	--	--	--	--
85 - 89	--	--	--	--	--	--	--	--	--
	--	--	--	--	--	--	--	--	--
90 & Over	--	--	--	--	--	--	--	--	--
	--	--	--	--	--	--	--	--	--
<b>Total</b>	144	115	29	--	--	--	--	--	--
	\$3,216	\$3,543	\$1,919	--	--	--	--	--	--

**SECTION 3: Supplemental Information for the Local Government Correctional Service Retirement Fund**

**EXHIBIT D**

**Disabled Members as of June 30, 2006**

**By Age, Years Disabled and Average Annual Benefit**

Age	Years Disabled								
	Total	Under 5	5-9	10-14	15-19	20-24	25-29	30-34	35 & over
Under 45	9	7	2	--	--	--	--	--	--
	\$12,418	\$11,139	\$16,892	--	--	--	--	--	--
45 - 49	6	6	--	--	--	--	--	--	--
	21,831	21,831	--	--	--	--	--	--	--
50 - 54	16	13	3	--	--	--	--	--	--
	13,029	13,201	12,285	--	--	--	--	--	--
55 - 59	25	19	6	--	--	--	--	--	--
	13,214	12,536	15,363	--	--	--	--	--	--
60 - 64	12	7	5	--	--	--	--	--	--
	13,932	13,050	15,166	--	--	--	--	--	--
65 - 69	2	2	--	--	--	--	--	--	--
	6,202	6,202	--	--	--	--	--	--	--
70 - 74	--	--	--	--	--	--	--	--	--
	--	--	--	--	--	--	--	--	--
75 - 79	--	--	--	--	--	--	--	--	--
	--	--	--	--	--	--	--	--	--
80 - 84	--	--	--	--	--	--	--	--	--
	--	--	--	--	--	--	--	--	--
85 - 89	--	--	--	--	--	--	--	--	--
	--	--	--	--	--	--	--	--	--
90 & Over	--	--	--	--	--	--	--	--	--
	--	--	--	--	--	--	--	--	--
<b>Total</b>	<b>70</b>	<b>54</b>	<b>16</b>	<b>--</b>	<b>--</b>	<b>--</b>	<b>--</b>	<b>--</b>	<b>--</b>
	<b>\$13,731</b>	<b>\$13,380</b>	<b>\$14,915</b>	<b>--</b>	<b>--</b>	<b>--</b>	<b>--</b>	<b>--</b>	<b>--</b>



**SECTION 3: Supplemental Information for the Local Government Correctional Service Retirement Fund**

**EXHIBIT E**

**Beneficiaries as of June 30, 2006**

**By Age, Years Since Death and Average Annual Benefit**

Age	Years Since Death								
	Total	Under 5	5-9	10-14	15-19	20-24	25-29	30-34	35 & over
Under 45	2	2	--	--	--	--	--	--	--
	\$614	\$614	--	--	--	--	--	--	--
45 - 49	1	--	1	--	--	--	--	--	--
	870	--	\$870	--	--	--	--	--	--
50 - 54	3	3	--	--	--	--	--	--	--
	4,601	4,601	--	--	--	--	--	--	--
55 - 59	1	1	--	--	--	--	--	--	--
	17,970	17,970	--	--	--	--	--	--	--
60 - 64	2	2	--	--	--	--	--	--	--
	4,101	4,101	--	--	--	--	--	--	--
65 - 69	--	--	--	--	--	--	--	--	--
	--	--	--	--	--	--	--	--	--
70 - 74	--	--	--	--	--	--	--	--	--
	--	--	--	--	--	--	--	--	--
75 - 79	--	--	--	--	--	--	--	--	--
	--	--	--	--	--	--	--	--	--
80 - 84	--	--	--	--	--	--	--	--	--
	--	--	--	--	--	--	--	--	--
85 - 89	--	--	--	--	--	--	--	--	--
	--	--	--	--	--	--	--	--	--
90 & Over	--	--	--	--	--	--	--	--	--
	--	--	--	--	--	--	--	--	--
Total	9	8	1	--	--	--	--	--	--
	\$4,675	\$5,150	\$870	--	--	--	--	--	--

**SECTION 3: Supplemental Information for the Local Government Correctional Service Retirement Fund**

**EXHIBIT F**

**Reconciliation of Member Data**

	<b>Active Members</b>	<b>Vested Terminated Members</b>	<b>Other Non- Vested Terminated Members</b>	<b>Disableds</b>	<b>Retired Participants</b>	<b>Beneficiaries</b>	<b>Total</b>
A. Number as of July 1, 2005	3,352	915	906	59	113	8	5,353
B. Data Adjustments	-	23	-23	-1	-	-	-1
C. Additions	627	181	269	16	31	1	1,125
D. Deletions:							
1. Terminated – Nonvested	-228	-3	-	-	-	-	-231
2. Terminated – Vested	-176	-	-	-	-	-	-176
3. Retirements	-25	-4	-	-2	-	-	-31
4. Disability	-15	-	-	-	-	-	-15
5. Died with Beneficiary	-	-	-	-	-	-	-
6. Died without Beneficiary	-4	-	-	-1	-	-	-5
7. Return to Active	-	-12	-12	-	-	-	-24
8. Other	=	=	<u>-54</u>	<u>-1</u>	=	=	<u>-55</u>
E. Number as of June 30, 2006	3,531	1,100	1,086	70	144	9	5,940

**SECTION 3: Supplemental Information for the Local Government Correctional Service Retirement Fund**

**EXHIBIT G**

**Summary Statement of Income and Expenses on a Market Value Basis for Year Ended June 30, 2006**

	Non-MPRIF Assets	MPRIF Reserve	Market Value
A. Assets available at beginning of period	\$97,255,314	\$3,619,564	\$100,874,878
B. Operating revenues:			
1. Member contributions	\$7,880,664	-	\$7,880,664
2. Employer contributions	11,825,800	-	11,825,800
3. MPRIF income	-	\$438,296	438,296
4. Net investment income			
(a) Interest and dividends	\$3,406,831	-	\$3,406,831
(b) Net appreciation/(depreciation)	9,535,392	-	9,535,392
(c) Securities lending income	45,704	-	45,704
(d) Investment expenses	<u>-172,382</u>	<u>-</u>	<u>-172,382</u>
(e) Net subtotal	\$12,815,545	-	\$12,815,545
5. Other	<u>11,633</u>	<u>-</u>	<u>11,633</u>
6. Total additions	\$32,533,642	\$438,296	\$32,971,938
C. Operating expenses:			
1. Benefits	\$943,014	\$398,421	\$1,341,435
2. Refunds	618,865	-	618,865
3. Administrative expenses	186,478	-	186,478
4. Other	<u>3,348</u>	<u>-</u>	<u>3,348</u>
5. Total operating expenses	\$1,751,705	\$398,421	\$2,150,126
D. Other changes in reserves:			
1. Annuities awarded	-\$1,816,610	\$1,816,610	-
2. Mortality gain/(loss)	-173,338	173,338	-
3. Change in MPRIF assumptions	<u>-</u>	<u>-</u>	<u>-</u>
4. Total other changes	-\$1,989,948	\$1,989,948	-
E. Assets available at end of period	\$126,047,303	\$5,649,387	\$131,696,690
F. Determination of current year unrecognized asset return (UAR)			
1. Average balance:			
(a) Non-MPRIF Assets available at BOY: (A)			\$97,255,314
(b) Non-MPRIF Assets available at EOY*: (E) – (D.2)			126,220,641
(c) Average balance: [(F.1(a)) + (F.1(b)) – (B.4(e)) – (B.5)]/2			105,324,389
2. Expected return: 8.50% x (F.1(c))			8,952,573
3. Actual return: (B.4(e)) + (B.5)			<u>12,827,178</u>
4. Current year UAR: (F.3) – (F.2)			\$3,874,605

\* Before adjustment for MPRIF Mortality Gain / Loss.

**SECTION 3: Supplemental Information for the Local Government Correctional Service Retirement Fund**

**EXHIBIT H**

**Table of Financial Information for Year Ended June 30, 2006**

	<b>Market Value</b>	<b>Cost Value</b>
<b>Assets in trust</b>		
Cash, equivalents, short-term securities	\$2,636,111	\$2,636,111
Fixed income	28,863,985	30,063,260
Equity	80,421,202	74,012,909
Equity in MPRIF	5,649,387	5,649,387
Invested securities lending collateral	15,508,345	15,508,345
SBI alternative	<u>13,823,391</u>	<u>11,815,743</u>
Total assets in trust	\$146,902,421	\$139,685,755
<b>Assets receivable</b>	<u>\$527,736</u>	<u>\$527,736</u>
<b>Total assets</b>	\$147,430,157	\$140,213,491
<b>Amounts currently payable</b>		
Securities lending collateral	-\$15,508,345	-\$15,508,345
Other	<u>-225,122</u>	<u>-225,122</u>
Total amounts currently payable	-\$15,733,467	-\$15,733,467
<b>Assets available for benefits</b>		
MPRIF reserves	\$5,649,387	\$5,649,387
Member reserves	33,773,744	33,773,744
Other non-MPRIF reserves	<u>92,273,559</u>	<u>85,056,893</u>
<b>Total assets available for benefits</b>	<u>\$131,696,690</u>	<u>\$124,480,024</u>
<b>Net Assets at Market/Cost Value</b>	<u>\$131,696,690</u>	<u>\$124,480,024</u>

**SECTION 3: Supplemental Information for the Local Government Correctional Service Retirement Fund**

**EXHIBIT I**

**Development of the Fund Through June 30, 2006**

<b>Year Ended June 30</b>	<b>Employer Contributions</b>	<b>Member Contributions</b>	<b>Net Investment Return*</b>	<b>Administrative Expenses</b>	<b>Benefit Payments</b>	<b>Actuarial Value of Assets at End of Year</b>
2002	\$8,830,000	\$5,882,000	\$1,126,000	\$137,000	\$610,000	\$40,105,000
2003	9,645,000	6,430,000	1,424,000	149,000	968,000	56,487,000
2004	10,029,408	6,671,647	3,881,483	161,861	1,392,532	75,515,145
2005	10,814,425	7,192,028	6,542,230	175,961	1,731,982	98,155,975
2006	11,825,800	7,880,664	10,060,256	186,478	1,960,300	125,775,917

*\* Net Investment Return on an Actuarial Value of Assets basis and net of investment fees.*

**SECTION 3: Supplemental Information for the Local Government Correctional Service Retirement Fund**

**EXHIBIT J**

**Development of Unfunded/(Overfunded) Actuarial Accrued Liability for Year Ended June 30, 2006**

1. Unfunded/(Overfunded) actuarial accrued liability at beginning of year		\$10,770,172
2. Normal cost at beginning of year		15,908,607
3. Total contributions		19,706,464
4. Interest		<u>1,430,171</u>
5. Expected unfunded/(overfunded) actuarial accrued liability (1) + (2) – (3) + (4)		\$8,402,486
6. Changes due to (gain)/loss from:		
(a) Investments	-	\$727,013
(b) MPRIF Mortality		173,338
(c) Salary increases	-	1,214,136
(d) Other demographics*		<u>895,198</u>
(e) Total changes due to (gain)/loss		<u>-\$872,613</u>
7. Unfunded/(Overfunded) actuarial accrued liability at end of year		<u>\$7,529,873</u>

\* Includes (gain)/loss due to age/service retirements, disability, mortality (pre and post-retirement) and withdrawal.

### SECTION 3: Supplemental Information for the Local Government Correctional Service Retirement Fund

---

#### EXHIBIT K

#### Definitions of Pension Terms

---

The following list defines certain technical terms for the convenience of the reader:

**Assumptions or Actuarial Assumptions:**

The estimates on which the cost of the Fund is calculated including:

- (a) Investment return — the rate of investment yield that the Fund will earn over the long-term future;
- (b) Mortality rates — the death rates of employees and pensioners; life expectancy is based on these rates;
- (c) Retirement rates — the rate or probability of retirement at a given age;
- (d) Turnover rates — the rates at which employees of various ages are expected to leave employment for reasons other than death, disability, or retirement.

**Normal Cost:**

The amount of contributions required to fund the benefit allocated to the current year of service.

**Actuarial Accrued Liability For Actives:**

The equivalent of the accumulated normal costs allocated to the years before the valuation date.

**Actuarial Accrued Liability For Pensioners:**

The single sum value of lifetime benefits to existing pensioners. This sum takes account of life expectancies appropriate to the ages of the pensioners and the interest that the sum is expected to earn before it is entirely paid out in benefits.

**Unfunded Actuarial Accrued Liability:**

The extent to which the actuarial accrued liability of the Fund exceeds the assets of the Fund. There is a wide range of approaches to paying off the unfunded actuarial accrued liability, from meeting the interest accrual only to amortizing it over a specific period of time.

### SECTION 3: Supplemental Information for the Local Government Correctional Service Retirement Fund

---

#### **Amortization of the Unfunded**

**Actuarial Accrued Liability:** Payments made over a period of years equal in value to the Fund's unfunded actuarial accrued liability.

#### **Investment Return:**

The rate of earnings of the Fund from its investments, including interest, dividends and capital gain and loss adjustments, computed as a percentage of the average value of the fund. For actuarial purposes, the investment return often reflects a smoothing of the capital gains and losses to avoid significant swings in the value of assets from one year to the next.

#### **Accrued Benefit Funded Ratio:**

A current year funded status that measures the percent of benefits covered by Current Assets. This ratio is based on benefits earned to the valuation date (accrued service) and includes future salary increases to retirement. The liability for these benefits is defined as the Current Benefit Obligations. The Accrued Benefit Funded Ratio is calculated as the Actuarial Value of Assets (Current Assets) divided by the Current Benefit Obligations.

#### **Projected Benefit Funded Ratio:**

A projected funded status that measures contribution sufficiency/deficiency, which is based on a present value of all plan benefits for the lifetime of all plan members. The liability for these benefits is defined as the Current and Expected Future Benefit Obligations, or Present Value of Benefits. The Current and Expected Future Assets are determined as the sum of the Actuarial Value of Assets (Current Assets), the Present Value of Expected Future Statutory Supplemental Contributions and the Present Value of Future Normal Costs. The Projected Benefit Funded Ratio is calculated as the Current and Expected Future Assets divided by the Current and Expected Future Benefit Obligations. If the ratio is equal to or more than 100%, there is a contribution sufficiency, and if it is less than 100% there is a contribution deficiency.



**SECTION 4: Reporting Information for the Local Government Correctional Service Retirement Fund**

---

**EXHIBIT I**

**Summary of Actuarial Valuation Results**

---

The valuation was made with respect to the following data supplied to us:

1. Pensioners as of the valuation date (including 9 beneficiaries in pay status)		223
2. Members inactive during year ended June 30, 2006 with vested rights		1,100
3. Members active during the year ended June 30, 2006		3,531
Fully vested	2,218	
Not vested	1,313	
4. Other non-vested terminated members as of June 30, 2006		1,086

---

**SECTION 4: Reporting Information for the Local Government Correctional Service Retirement Fund**

**EXHIBIT I (continued)**

**Summary of Actuarial Valuation Results**

	Actuarial Present Value of Projected Benefits	Actuarial Present Value of Future Normal Costs	Actuarial Accrued Liability
<b>A. Determination of Actuarial Accrued Liability</b>			
1. Active members:			
(a) Retirement benefits	\$168,461,723	\$89,258,888	\$79,202,835
(b) Disability benefits	25,451,058	16,490,576	8,960,482
(c) Death benefits	7,383,345	4,353,123	3,030,222
(d) Withdrawal benefits	<u>40,078,149</u>	<u>28,661,119</u>	<u>11,417,030</u>
(e) Total	\$241,374,275	\$138,763,706	\$102,610,569
2. Vested terminated members	\$12,638,549	-	\$12,638,549
3. Other non-vested terminated members	1,105,046	-	1,105,046
4. Annuitants in MPRIF	5,649,387	-	5,649,387
5. Annuitants not in MPRIF	<u>11,302,239</u>	<u>-</u>	<u>11,302,239</u>
6. Total	\$272,069,496	\$138,763,706	\$133,305,790
<b>B. Determination of Unfunded Actuarial Accrued Liability</b>			
1. Actuarial Accrued Liability			\$133,305,790
2. Actuarial Value of Assets			<u>125,775,917</u>
3. Unfunded Actuarial Accrued Liability: (B.1) – (B.2)			\$7,529,873
<b>C. Determination of Supplemental Contribution Rate</b>			
1. Present value of future payrolls through amortization date of July 1, 2023			\$1,917,224,627
2. Supplemental contribution rate: (B.3) / (C.1)			0.39%
<b>D. Determination of GASB Amortization Rate</b>			
1. Present value of future payrolls through amortization date of July 1, 2023			\$1,788,549,682
2. Supplemental contribution rate: (B.3) / (D.1)			0.42%

**SECTION 4: Reporting Information for the Local Government Correctional Service Retirement Fund**

**EXHIBIT II**

**Actuarial Balance Sheet**

A. Current Assets				\$125,775,917
B. Expected Future Assets				
1. Present Value of Expected Future Statutory Supplemental Contributions				\$43,904,444
2. Present Value of Future Normal Costs				<u>138,763,706</u>
3. Total Expected Future Assets				\$182,668,150
C. Total Current and Expected Future Assets				\$308,444,067
D. Current Benefit Obligations	<b><u>Non-Vested</u></b>	<b><u>Vested</u></b>		<b><u>Total</u></b>
1. Benefit recipients:				
(a) Retirement annuities	-	\$5,187,846		\$5,187,846
(b) Disability benefits	-	11,302,239		11,302,239
(c) Beneficiaries	-	461,541		461,541
2. Vested terminated members	-	12,638,549		12,638,549
3. Other non-vested terminated members	-	1,105,046		1,105,046
4. Active members	<u>\$4,802,663</u>	<u>85,219,579</u>		<u>90,022,242</u>
5. Total Current Benefit Obligations	\$4,802,663	\$115,914,800		\$120,717,463
E. Expected Future Benefit Obligations				<u>151,352,033</u>
F. Total Current and Expected Future Benefit Obligations - Present Value of Benefits: (D.5 + E)				\$272,069,496
G. Current Unfunded/(Surplus) Actuarial Liability (D.5 - A)				-\$5,058,454
H. Current and Future Unfunded/(Surplus) Actuarial Liability (F - C)				<u>-\$36,374,571</u>

**SECTION 4: Reporting Information for the Local Government Correctional Service Retirement Fund**

**EXHIBIT III**

**Supplementary Information Required by the GASB – Schedule of Employer Contributions**

<b>Plan Year Ended June 30</b>	<b>Actuarially Required Contribution Rate<sup>(2)</sup> (a)</b>	<b>Actual Covered Payroll (b)</b>	<b>Actual Member Contributions (c)</b>	<b>Annual Required Employer Contributions [(a) x (b)] – (c) = (d)</b>	<b>Actual Employer Contributions<sup>(1)</sup> (e)</b>	<b>Percentage Contributed (e) / (d)</b>
2000	15.03%	\$70,690,000	\$4,382,000	\$6,243,000	\$6,487,000	103.91%
2001	14.36% <sup>(3)</sup>	91,025,000	5,308,000	7,763,000	8,054,000	103.75%
2002	14.21%	101,309,000	5,882,000	8,514,000	8,830,000	103.71%
2003	14.10% <sup>(4)</sup>	110,296,000	6,430,000	9,122,000	9,645,000	105.74%
2004	14.15%	109,600,235	6,671,647	8,836,786	10,029,408	113.50%
2005	13.06%	116,848,904	7,192,028	8,068,439	10,814,425	134.03%
2006	13.09%	125,189,428	7,880,664	8,506,632	11,825,800	139.02%
2007	12.71%					

<sup>(1)</sup> Includes contributions from other sources (if applicable).

<sup>(2)</sup> Actuarially Required Contribution Rate calculated according to parameters of GASB 25 with no assumption for growth of covered population.

<sup>(3)</sup> Actuarially Required Contribution Rate prior to change in Asset Valuation Method is 14.38%.

<sup>(4)</sup> Actuarially Required Contribution Rate prior to change in Actuarial Assumptions is 14.08%.

**SECTION 4: Reporting Information for the Local Government Correctional Service Retirement Fund**

**EXHIBIT IV**

**Supplementary Information Required by the GASB – Schedule of Funding Progress**

<b>Actuarial Valuation Date</b>	<b>Actuarial Value of Assets (a)</b>	<b>Actuarial Accrued Liability (AAL) (b)</b>	<b>Unfunded/ (Overfunded) AAL (UAAL) (b) – (a)</b>	<b>Funded Ratio (a) / (b)</b>	<b>Actual Covered Payroll (Previous FY) (c)</b>	<b>UAAL as a Percentage of Covered Payroll [(b) – (a)] / (c)</b>
07/01/2000	\$11,116,000	\$10,195,000	-\$921,000	109.03%	\$70,690,000	-1.30%
07/01/2001	25,014,000	25,453,000	439,000	98.28%	91,025,000	0.48%
07/01/2002	40,105,000	42,144,000	2,039,000	95.16%	101,309,000	2.01%
07/01/2003	56,487,000	62,542,000	6,055,000	90.32%	110,296,000	5.49%
07/01/2004	75,515,145	85,693,412	10,178,267	88.12%	109,600,235	9.29%
07/01/2005	98,155,975	108,926,147	10,770,172	90.11%	116,848,904	9.22%
07/01/2006	125,775,917	133,305,790	7,529,873	94.35%	125,189,428	6.01%

**SECTION 4: Reporting Information for the Local Government Correctional Service Retirement Fund**

**EXHIBIT V**

**Determination of Contribution Sufficiency**

	<b>July 1, 2006</b>	
	<b>Percent of Payroll</b>	<b>Dollar Amount</b>
<b>A. Statutory Contributions – Chapter 353E</b>		
1. Member Contributions	5.83%	\$8,225,142
2. Employer Contributions	<u>8.75%</u>	<u>12,344,767</u>
3. Total	<u>14.58%</u>	<u>\$20,569,909</u>
<b>B. Required Contributions – Chapter 356</b>		
1. Normal Cost:		
(a) Retirement benefits	8.09%	\$11,410,132
(b) Disability benefits	1.49%	2,107,194
(c) Death	0.36%	502,487
(d) Withdrawal benefits	<u>2.21%</u>	<u>3,114,290</u>
(e) Total	12.15%	\$17,134,103
2. Amortization of Supplemental Contribution UAAL	0.39%	550,224
3. Allowance for Administrative Expenses	<u>0.14%</u>	<u>197,516</u>
4. Total	<u>12.68%</u>	<u>\$17,881,843</u>
<b>C. Contribution Sufficiency (Deficiency) (A.3 – B.4)</b>	1.90%	\$2,688,066
<b>Projected annual payroll* for fiscal year beginning on the valuation date</b>		\$141,083,054

*\*Calculated as covered actual payroll, projected one year with salary scale.*

**SECTION 4: Reporting Information for the Local Government Correctional Service Retirement Fund**

---

**EXHIBIT VI**

**Supplementary Information Required by the GASB**

---

<b>Valuation date</b>	July 1, 2006
<b>Actuarial cost method</b>	Entry Age Normal
<b>Amortization method</b>	Level percentage of payroll, assuming payroll increases at 5.00% per annum
<b>Remaining amortization period</b>	17 years remaining as of July 1, 2006
<b>Asset valuation method</b>	Market Value, adjusted for amortization obligations receivable at the end of each fiscal year, less a percentage of the Unrecognized Asset Return determined at the close of each of the four preceding fiscal years. Unrecognized Asset Return is the difference between actual net return on Market Value of Assets and the asset return expected during that fiscal year (based on the assumed interest rate employed in the July 1 Actuarial Valuation of the fiscal year).

---

**Actuarial assumptions:**

Investment rate of return:

Pre-retirement	8.50% per annum
Post-retirement	8.50% per annum (payment of earnings on retired reserves in excess of 6.00% accounted for by 6.00% post-retirement assumption)

---

**Plan membership:**

Pensioners and beneficiaries receiving benefits	223
Terminated vested members entitled to, but not yet receiving benefits	1,100
Other non-vested terminated members	1,086
Active members	<u>3,531</u>
Total	5,940

---

**SECTION 4: Reporting Information for the Local Government Correctional Service Retirement Fund**

---

**EXHIBIT VII**

**Actuarial Assumptions and Actuarial Cost Method**

---

**Net Investment Return:**

*Pre-Retirement:* 8.50% per annum.

*Post-Retirement:* 8.50% per annum.

---

**Benefit Increases After Retirement:**

Payment of earnings on retired reserves in excess of 6.00% accounted for by 6.00% post-retirement assumptions.

---

**Salary Increases:**

Reported salary at valuation date increased according to the rate table below to current fiscal year and annually for each future year. Prior fiscal year salary is annualized for new members.

---

**Mortality Rates:**

*Healthy Pre-Retirement:* Male: 1983 Group Annuity Mortality Table for males set back one year.

Female: 1983 Group Annuity Mortality Table for females.

*Healthy Post-Retirement:* Male: 1983 Group Annuity Mortality Table for males set forward two years.

Female: 1983 Group Annuity Mortality Table for females set forward two years.

*Disabled:* Male: Combined Annuity Mortality Table.

Female: Combined Annuity Mortality Table.



**SECTION 4: Reporting Information for the Local Government Correctional Service Retirement Fund**

---

<b>Retirement Rates:</b>	Age-related table as follows:																								
	<table border="0"> <tr> <td>Ages:</td> <td>50-53</td> <td>2.00%</td> </tr> <tr> <td></td> <td>54</td> <td>5.00</td> </tr> <tr> <td></td> <td>55</td> <td>25.00</td> </tr> <tr> <td></td> <td>56-59</td> <td>10.00</td> </tr> <tr> <td></td> <td>60-61</td> <td>20.00</td> </tr> <tr> <td></td> <td>62-64</td> <td>40.00</td> </tr> <tr> <td></td> <td>65-69</td> <td>50.00</td> </tr> <tr> <td></td> <td>70 &amp; Over</td> <td>100.00</td> </tr> </table>	Ages:	50-53	2.00%		54	5.00		55	25.00		56-59	10.00		60-61	20.00		62-64	40.00		65-69	50.00		70 & Over	100.00
Ages:	50-53	2.00%																							
	54	5.00																							
	55	25.00																							
	56-59	10.00																							
	60-61	20.00																							
	62-64	40.00																							
	65-69	50.00																							
	70 & Over	100.00																							
<b>Withdrawal Rates:</b>	Graded rates based on actual experience developed by the June 30, 1997 experience analysis for the Correctional Employees Retirement Fund. Rates are shown in rate table.																								
<b>Disability:</b>	Rates as shown in the rate table.																								
<b>Allowance for Combined Service Annuity:</b>	Liabilities for active members are increased by 0.00% and liabilities for former members are increased by 30.00% to account for the effect of some participants having eligibility for a Combined Service Annuity.																								
<b>Administrative Expenses:</b>	Prior year administration expenses expressed as percentage of prior year projected payroll.																								
<b>Return of Contributions:</b>	All employees withdrawing after becoming eligible for a deferred benefit take the larger of their contributions accumulated with interest or the value of their deferred benefit.																								
<b>Percent Married:</b>	85% of members are assumed to be married.																								
<b>Age of Spouse:</b>	Females are assumed to be three years younger than males.																								

**SECTION 4: Reporting Information for the Local Government Correctional Service Retirement Fund**

---

<b>Social Security:</b>	Based on the present law and 6.00% retroactive salary scale. Only earnings history while in state service is used. Future Social Security benefits replace the same proportion of salary as at present.
<b>Special Consideration:</b>	Married members assumed to elect subsidized joint and survivor form of annuity as follows: Males: 25.00% elect 50% J&S option 25.00% elect 100% J&S option Females: 5.00% elect 50% J&S option 5.00% elect 100% J&S option
<b>Actuarial Cost Method:</b>	Entry Age Normal Actuarial Cost Method. Entry Age is the age at the time the participant commenced employment. Normal Cost and Actuarial Accrued Liability are calculated on an individual basis and are expressed as a level percentage of payroll, with Normal Cost determined as if the current benefit accrual rate had always been in effect.
<b>Asset Valuation Method:</b>	Market Value, adjusted for amortization obligations receivable at the end of each fiscal year, less a percentage of the Unrecognized Asset Return determined at the close of each of the four preceding fiscal years. Unrecognized Asset Return is the difference between actual net return on Market Value of Assets and the asset return expected during the fiscal year (based on the assumed interest rate employed in the July 1 Actuarial Valuation of the fiscal year). Transition rules apply between July 1, 2001 and July 1, 2003, when the method is fully in effect.
<b>Payment on the Unfunded Actuarial Accrued Liability:</b>	A level percentage of payroll each year to the statutory amortization date assuming payroll increases of 6.00% per annum.
<b>Accrued Liability:</b>	If there is a negative Unfunded Actuarial Accrued Liability, the surplus amount shall be amortized over 30 years as a level percentage of payroll.

**SECTION 4: Reporting Information for the Local Government Correctional Service Retirement Fund**

**Summary of Rates:**

Shown below for selected ages:

Age	Rate (%)					
	Death		Withdrawal		Disability	Salary Increases
	Male	Female	Male	Female		
20	0.04%	0.02%	24.00%	16.00%	0.04%	7.25%
25	0.04	0.03	14.70	14.20	0.06	7.00
30	0.06	0.03	9.10	13.50	0.08	7.00
35	0.08	0.05	6.00	12.90	0.11	7.00
40	0.11	0.07	4.40	10.40	0.18	6.50
45	0.19	0.10	3.40	6.40	0.29	5.75
50	0.35	0.16	2.40	4.70	0.50	5.50
55	0.57	0.25	1.40	3.30	0.88	5.25
60	0.84	0.42	0.00	0.00	1.41	5.25
65	1.29	0.71	0.00	0.00	0.00	5.25
70	2.48	1.24	0.00	0.00	0.00	5.25

**Changes in Actuarial Assumptions and Actuarial Cost Methods:**

There have been no changes in the actuarial assumptions or actuarial cost methods since the prior valuation.

**SECTION 4: Reporting Information for the Local Government Correctional Service Retirement Fund**

---

**EXHIBIT VIII**  
**Summary of Plan Provisions**

---

This summary of provisions reflects the interpretation of applicable Statutes for purposes of preparing this valuation. This interpretation is not intended to create or rescind any benefit rights in conflict with any Minnesota Statutes.

---

<b>Plan Year:</b>	Effective July 1, 1999
<b>Eligibility:</b>	Local government employees in covered correctional service for a county-administered jail or correctional facility or in a regional correctional facility administered by multiple counties, spends at least 95% of working time in direct contact with persons confined in the jail or facility, and is not a member of the Public Employees Police and Fire Fund.
<b>Contributions:</b>	<i>Member:</i> 5.83% of salary. <i>Employer:</i> 8.75% of salary.
<b>Allowable Service:</b>	Local Government Correctional Service during which member contributions were made. May also include certain leaves of absence, military service and periods while temporary Worker's Compensation is paid.
<b>Salary:</b>	Includes wages, allowances and fees. Excludes lump sum payments at a separation and reduced salary while receiving Worker's Compensation benefits.
<b>Average Salary:</b>	Average of the five highest successive years of salary. Average Salary is based on all Allowable Service if less than five years.

---

**SECTION 4: Reporting Information for the Local Government Correctional Service Retirement Fund**

---

**Retirement:**

Normal Retirement Benefit:

*Age/Service Requirement:* Age 55 and three years of Allowable Service. Proportionate Retirement Annuity is available at age 65 and one year of Allowable Service.

*Amount:* 1.9% of Average Salary for each year of Allowable Service, pro rata for completed months.

Early Retirement Benefit:

*Age/Service Requirement:* Age 50 and three years of Allowable Service.

*Amount:* Normal Retirement Benefit based on Allowable Service and Average Salary at retirement date to the actuarial equivalent of the benefit that would be payable if the member deferred the benefit until age 55.

*Form of Payment:* Life annuity. Actuarially equivalent options are:  
25%, 50%, 75%, or 100% joint and survivor with bounce back feature without additional reduction.

*Benefit Increases:* Benefits may be increased each January 1 depending on the investment performance of the Minnesota Post Retirement Investment Fund (MPRIF). A benefit recipient who has been receiving a benefit for at least 12 full months as of June 30 will receive a full increase. Members receiving benefits for at least one full month but less than 12 full months will receive a partial increase.

---

**Disability**

Occupational Benefit:

*Age/Service Requirement:* Member who cannot perform duties as a direct result of a disability related to an act of duty.

*Amount:* 47.50% of Average Salary plus 1.90% of Average Salary for each year in excess of 25 years of Allowable Service (pro rata for completed months).

Payment begins at disability and stops at age 65 or earlier if disability ceases or death occurs. Benefits may be paid upon re-employment but salary plus benefit cannot exceed current salary of position held at time of disability.

**SECTION 4: Reporting Information for the Local Government Correctional Service Retirement Fund**

---

Non-Occupational Disability:

*Age/Service Requirement:* At least one year of Allowable Service and disability not related to covered employment.

*Amount:* Normal Retirement Benefit based on Allowable Service (minimum of 10 years) and Average Salary at disability.

*Form of Payment:* Payment begins at disability and stops at age 65 or earlier if disability ceases or death occurs. Benefits may be paid upon re-employment but salary plus benefit cannot exceed current salary of position held at time of disability. Same as for retirement.

*Benefit Increases:* Adjusted by PERA to provide same increase as MPRIF.

Retirement Benefits:

*Age/Service Requirement:* Age 65 with continued disability.

*Amount:* Any optional annuity continues. Otherwise, the larger of the disability benefit paid before age 65 or the normal retirement benefit available at age 65, or an actuarially equivalent optional annuity.

*Form of Payment:* Same as for retirement.

*Benefit Increases:* Same as for retirement.

---

**Death:**

Surviving Spouse Benefit:

*Age/Service Requirement:* Member at any age or former member age 50 or older who dies before retirement or disability benefits commence with three years of Allowable Service. If an active member dies, benefits may commence immediately, regardless of age.

*Amount:* Surviving spouse receives the 100% joint and survivor benefit using the Normal Retirement formula above. If commencement is prior to age 50, the appropriate early retirement formula described above applies except that one-half the monthly reduction factor is used from age 50 to the commencement age. In lieu of this benefit, the surviving spouse may elect a refund of contributions with interest or an actuarially

**SECTION 4: Reporting Information for the Local Government Correctional Service Retirement Fund**

---

equivalent term certain annuity (lump sum payable to estate at death).

*Benefit Increases:*

Adjusted by PERA to provide same increase as MPRIF.

Surviving Dependent Children's Benefit:

*Age/Service Requirement:*

If no surviving spouse, all dependent children (biological or adopted) below age 20 who are dependent for more than half of their support on deceased member.

*Amount:*

Actuarially equivalent to surviving spouse 100% joint survivor annuity payable to the later of age 20 or five years. The amount is to proportionally divided among surviving children.

Refund of Contributions With Interest:

*Age/Service Requirement:*

Active employee dies and survivor benefits are not payable or a former employee dies before annuity begins. If accumulated contributions with interest exceed total payments to the surviving spouse and children, then the remainder is paid out.

*Amount:*

The member's contributions with 6.00% interest.

---

**Termination:**

Refund of Contributions:

*Age/Service Requirement:*

Termination of local government service.

*Amount:*

Member's contributions with 6.00% interest compounded annually. A deferred annuity may be elected in lieu of a refund if three or more years of Allowable Service.

Deferred Annuity:

*Age/Service Requirement:*

Three years of Allowable Service.

*Amount:*

Benefit computed under law in effect at termination and increased by 3.00% compounded annually until January 1 of the year following attainment of age 55 and 5.00% thereafter until the annuity begins.

---

**Changes in Plan Provisions:**

There have been no changes in plan provisions since the prior valuation.