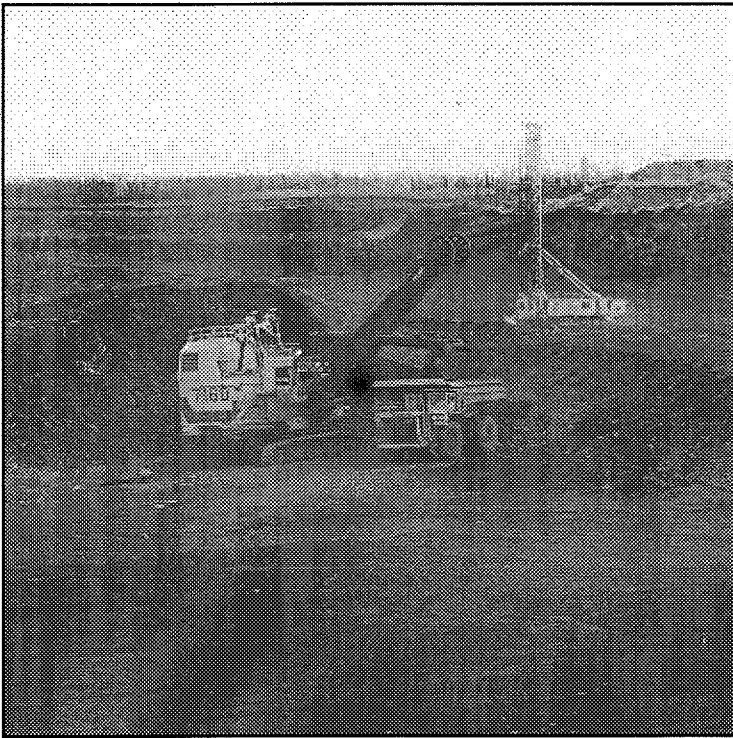


100 Years of Service
1905 - 2005



06 - 0201

The
Annual Report
of the
Inspector of Mines



2005

INSPECTOR OF MINES
Barry D. Lesar

OFFICE AT
St. Louis County Garage
Highway 135 East
Virginia, Minn. 55792

PHONE: 218-742-9840

The
ANNUAL REPORT
of the
INSPECTOR OF MINES
St. Louis County, Minnesota

2005

INSPECTOR OF MINES

Barry D. Lesar
329 Viking Drive
Hoyt Lakes, Minnesota 55750
HOME PHONE: 218-225-3203
OFFICE PHONE: 218-742-9840
MOBILE UNIT: CD-28
E-MAIL: lesarb@co.st-louis.mn.us
Fax: 218-741-7832

ASSISTANT MINE INSPECTOR

Stanley J. Rojeski, Jr.
4554 Vermilion Trail
Gilbert, Minnesota 55741
HOME PHONE: 218-865-6945
OFFICE PHONE: 218-742-9842
MOBILE UNIT: CD-27

ASSISTANT MINE INSPECTOR

Paul T. Wier
2311 Station 44 Road
Eveleth, Minnesota 55734
HOME PHONE: 218-744-2806
OFFICE PHONE: 218-742-9843
MOBILE UNIT: CD-20

ASSISTANT MINE INSPECTOR

Terrance M. O'Neil
616 S. Main Street, Box 294
Biwabik, Minnesota 55708
HOME PHONE: 218-865-6978
OFFICE PHONE: 218-742-9841
MOBILE UNIT: CD-14

OFFICE AT
ST. LOUIS COUNTY GARAGE
7823 HIGHWAY 135 EAST
Virginia, Minnesota 55792
PHONE: 218-742-9840

THE ST. LOUIS COUNTY BOARD OF COMMISSIONERS

District 1 Dennis Fink, Duluth, Minnesota
District 2 Steven O'Neil, Duluth, Minnesota
District 3 William J. Kron, Duluth, Minnesota
District 4 Mike Forsman, Ely, Minnesota
District 5 Peg Sweeney, Gnesen Township, Minnesota
District 6 Keith Nelson, Virginia, Minnesota
District 7 Steve Raukar, Kelly Lake, Minnesota

December 31, 2005

**THE HONORABLE BOARD OF COMMISSIONERS
ST. LOUIS COUNTY
COURT HOUSE
DULUTH, MN 55802-1202**

Dear Chairman Nelson, and Fellow Commissioners:

The Annual Report of the Inspector of Mines for the year 2005 is herewith submitted.

With the completion of the year I would like to take this opportunity to commemorate the 100th anniversary of the statutory establishment of the Office of the Inspector of Mines. Minnesota Chapter 180 has resulted in 100 years of service to the Mining Employees, Mining Companies, and citizens of St. Louis County and the State of Minnesota. During these 100 years of overseeing the safe operations of the mines in St. Louis County this office has seen many changes in the industry and the region. May the next 100 years be even more fruitful for everyone.

While the mining industry in Northern Minnesota has shown improved operating conditions recently, there are some signs that there may be a leveling off or reduction in demand in the future, as evidenced by the recent developments in the Auto Industry. While this may not greatly affect this area, it is of some concern for the mining industry in St. Louis County. There is, however, the potential for expanded mining operations in the form of copper-nickel mining, as evidenced by the first ever inclusion in this year's Annual Report of a non-ferrous mining operation. While this mine is not yet in production, the ongoing development and feasibility studies being conducted at Cliffs Erie, along with the Environmental Permits being applied for, are bringing the onset of mining ever closer. With this development, the face of mining in Northern Minnesota will be altered in the future. Hopefully, this non-ferrous development will be the start of an improved and invigorated mining industry for many years to come.

The total employment for the year was 3,568 and these people worked a total of 7,464,447 manhours.

There was no natural ore shipped and 40,464,088.92 tons of taconite pellets shipped from these mines. There were 65,342,769 tons of stripping and waste removed from these mines.

Inspections and visits for 2005 were as follows: Approximately 534 inspections, visits and investigations were made to the operating and non-operating mines. There were no fatalities and 29 lost time or serious accidents reported.

Acknowledgement and appreciation is extended to both Labor and Management for their continued interest, efforts and cooperation in the field of safety and health throughout the mines and plants in St. Louis County.

Respectfully submitted,



Barry D. Lesar
Inspector of Mines
St. Louis County

Excerpts from the Law On

INSPECTOR OF MINES

CHAPTER 180

MINNESOTA STATUTES

SECTION 180.07

INSPECTION REQUESTED, EXAMINATION

When 20 or more persons working in any mine or place where mining is done, or the owner, operator, or agent of any mine, or the certified collective bargaining agent for the employees of said mine, shall notify the inspector of mines in writing that services are needed, the inspector shall immediately make an inspection thereof and examine as to the necessary precautions and general safety of the mines and see that all the provisions of this chapter are observed and strictly carried out.

SUMMARY OF STATISTICS

MINES OF ST. LOUIS COUNTY, MINNESOTA

2005

Number of Mining Companies	8
Number of Mines in Operation	6
Number of Plants in Operation	6
Number of Wash Plants	0
Number of Mines Inactive	285
Number of Abandoned Mine Shafts	64
Total Number of Mines and Plants	291
Total Pellets Shipped	40,464,088.92
Total Ore Shipped	0
Taconite Mined	135,538,123
Stripping and Waste Removal, Tons	65,342,769
Total Material Moved, Tons Estimate	200,880,892
Total People Employed	3,568
Number of Fatal Accidents, Open Pit	0
Number of Fatal Accidents, Plant	0
Total Number of Fatal Accidents	0
Fatalities per 1,000 People Employed	0
Number of Lost-time and Time Charged Accidents	29
Total Number of Man-hours Worked	7,464,447
Number of Visits, Inspections and Investigations	534

LABOR CLASSIFICATION AND HOURLY RATES

Shift Difference:	Sunday 11/4 Time
.....	Afternoon \$0.30
.....	Night \$0.45

2005 WAGE RATES INCENTIVE INCLUDED

Labor Grade	Wage Rate
1	18.736
2	20.608
3	22.798
4	24.047
5	25.613

Due to Contractual changes the wage structure has changed significantly in recent years resulting in fewer job classes. This is one example of the several different pay schedules presently in effect.

YEAR	MINES	TONS SHIPPED	EMPLOYED	INJURED	FATALS	FAT/1000	WAGES
1905-10	(Average per year)		13,320		73	5.44	2.110
1910-11			19,918		78	3.91	2.640
1911-12			15,286		51	3.31	2.575
1912-13			16,048		44	2.74	2.705
1913-14			16,000		43	2.59	2.310
1914-15			11,430		24	2.10	2.421
1915-16			14,639		34	2.32	2.923
1916-17			14,779		22	1.51	3.391
1917-18	(Sliver Cave Disaster)		15,307		60	3.92	4.347
1918-19			14,212		33	2.32	5.645
1919-20	114	25,349,924	14,121		36	2.55	6.010
1920-21	102	27,165,386	12,043		26	2.16	6.037
1921-22	84	13,398,525	9,688		24	3.48	4.062
1923	90	33,147,517	11,896		27	2.27	5.076
1924	75	22,808,875	11,538		21	1.82	5.144
1925	76	29,077,679	10,180		18	1.77	5.126
1926	66	32,583,943	9,225		15	1.63	5.283
1927	70	28,052,363	9,038		22	2.43	5.305
1928	59	29,704,774	8,022		9	1.12	5.230
1929	57	35,680,720	8,008		17	2.12	5.340
1930	50	25,196,155	7,752		13	1.68	5.280
1931	32	12,270,886	4,824		4	0.83	5.260
1932	30	1,773,750	2,243		2	0.89	4.308
1933	35	10,809,167	2,843		1	0.35	4.433
1934	42	11,781,226	4,272		2	0.47	4.830
1935	40	13,703,715	4,079		6	1.47	5.060
1936	42	23,322,975	4,694		6	1.28	4.800
1937	52	36,536,326	6,356		5	0.79	6.200
1938	38	10,976,760	3,773		4	1.06	5.816
1939	43	24,156,258	4,589		3	0.65	6.080
1940	47	36,493,781	5,547		1	0.18	6.400
1941	63	45,874,218	7,097	60	5	0.70	6.820
1942	60	53,923,635	8,101	107	14	1.70	7.030
1943	62	51,753,320	9,597	156	7	0.73	7.440
1944	66	50,532,679	9,390	247	6	0.64	7.750
1945	56	47,544,509	8,495	175	12	1.41	7.720
1946	60	38,380,361	7,100	167	6	0.84	7.720
1947	79	47,293,918	8,715	153	9	1.03	8.720
1948	80	52,020,563	10,286	178	5	0.49	9.480
1949	94	42,406,528	9,680	187	7	0.72	9.480
1950	109	48,671,966	10,257	159	4	0.38	10.480
1951	116	60,249,538	11,884	188	8	0.66	10.480
1952	122	48,192,132	10,838	160	2	0.18	11.480
1953	122	60,776,174	12,079	215	4	0.33	12.160
1954	121	49,845,118	9,925	157	4	0.40	12.560
1955	127	36,137,304	10,381	151	2	0.19	14.850
1956	127	44,493,944	11,017	134	6	0.54	17.560
1957	124	50,093,275	12,804	144	6	0.47	17.560

YEAR	MINES	TONS SHIPPED	EMPLOYED	INJURED	FATALS	FAT/1000	WAGES
1958	90	30,495,093	10,250	83	0	0.00	18.400
1959	89	16,055,353	9,256	93	4	0.43	22.480
1960	95	39,526,879	11,797	132	2	0.16	22.430
1961	85	33,169,291	9,200	51	4	0.43	22.430
1962	46	23,269,349	8,676	57	1	0.11	22.430
1963	61	35,255,178	7,671	30	2	0.26	22.430
1964	42	39,115,088	8,102	26	1	0.12	22.430
1965	54	40,891,345	8,305	53	0	0.00	22.430
1966	49	44,412,473	9,445	56	4	0.43	22.430
1967	51	41,216,870	8,825	52	4	0.44	23.760
1968	53	43,078,879	9,125	55	2	0.22	25.640
1969	51	34,628,234	9,394	58	0	0.00	27.430
1970	49	33,648,268	9,631	71	5	0.52	28.520
1971	50	32,687,511	9,441	58	0	0.00	32.480
1972	46	35,100,156	9,431	63	0	0.00	34.096
1973	47	46,076,814	10,131	58	4	0.40	35.352
1974	49	51,745,763	10,667	60	1	0.09	44.360
1975	51	45,394,814	10,864	71	0	0.00	45.842
1976	52	41,425,833	11,514	77	1	0.09	47.368
1977	24	26,556,566	10,840	82	2	0.19	56.682
1978	26	50,806,547	13,056	138	1	0.08	64.344
1979	26	54,530,338	13,267	164	0	0.00	70.832
1980	18	42,076,497	11,441	107	1	0.09	80.112
1981	12	47,300,056	11,630	96	0	0.00	89.472
1982	11	22,335,570	7,626	44	0	0.00	94.192
1983	9	26,843,983	5,935	50	2	0.34	84.19
1984	9	30,463,941	6,305	55	0	0.00	87.39
1985	9	31,948,722	5,539	29	0	0.00	90.60
1986	9	26,608,768.51	5,250	33	0	0.00	94.19
1987	9	30,063,909	4,857	26	1	0.21	94.19
1988	9	37,250,242.97	4,546	41	1	0.18	94.19
1989	9	38,421,803	5,664	55	2	0.35	94.19
1990	9	41,441,888	6,379	40	1	0.16	94.19
1991	10	38,420,014	6,468	49	0	0.00	94.19
1992	10	37,684,439	6,325	110	0	0.00	106.94
1993	9	39,338,920	5,953	133	0	0.00	106.94
1994	9	43,976,323.01	6,051	97	1	0.17	93.936
1995	9	47,030,820.33	6,005	87	0	0.00	97.936
1996	8	46,144,620.64	6,032	96	0	0.00	101.936
1997	8	46,978,014	6,129	84	0	0.00	103.616
1998	8	46,862,734	5,962	114	1	0.17	105.936
1999	9	43,136,042	5,633	99	0	0.00	105.936
2000	9	44,806,128	5,610.7	77	1	0.18	109.936
2001	8	34,144,559.29	4,212	60	0	0.00	113.936
2002	8	39,087,907	4,036	60	0	0.00	113.936
2003	8	35,282,267	4,177	35	0	0.00	121.936
2004	8	42,059,597	3,444	24	0	0.00	145.384
2005	8	40,464,088.92	3,568	29	0	0.00	178.40

Average/Day

REPORT TO COUNTY INSPECTOR OF MINES
(Minnesota Statutes 180)
ORE SHIPPED FROM MINES, TONS OF STRIPPING REMOVED
NUMBER OF PEOPLE EMPLOYED, MINES OF ST. LOUIS COUNTY, MINNESOTA
YEAR ENDING DECEMBER 31, 2005

MINES AND SUPERINTENDENTS	TONS OF NATURAL ORE SHIPPED	TONS OF TACONITE PELLETS SHIPPED	TOTAL TACONITE MINED	TONS STRIPPING WASTE *	AVG. NO. PEOPLE EMPLOYED PLANTS/PITS	MAN HOURS	MONTHS WORKED
CLIFFS ERIE L.L.C. Operations Manager T. 59, 60, R. 12, 15	Shut Down and Deactivation activities for the old LTV Steel Plant						
UNITED TACONITE LLC Todd Roth - VP & General Manager	All Tonnages in Long Tons	4,923,404	14,697,370	12,394,748	440	935,715	12
Keewatin Taconite Co. Division of USX	Itasca Co. Production St. Louis Co. Production	5,047,940 46,301	18,617,601 159,798	8,835,782 136,240	Mine 144 Plant 145 Elec. & Tech. 86 Administrative 11	300,105 303,352 178,516 23,458	12 12 12 12
HIBBING TACONITE CO. Ed Latendresse, Manager T. 57, R. 20, & 21	All Tonnages in Long Tons	8,504,159	29,774,181	19,764,061	664	1,407,777	12
MITTAL STEEL USA, MINORCA MINE, INC. Minorca Mine J.H. Holmes, General Manager	All Tonnages in Gross Tons	2,765,810	8,661,460	8,724,289	335	680,308	12

REPORT TO COUNTY INSPECTOR OF MINES
(Minnesota Statutes 180)
ORE SHIPPED FROM MINES, TONS OF STRIPPING REMOVED
NUMBER OF PEOPLE EMPLOYED, MINES OF ST. LOUIS COUNTY, MINNESOTA
YEAR ENDING DECEMBER 31, 2005

MINES AND SUPERINTENDENTS	TONS OF NATURAL ORE SHIPPED	TONS OF TACONITE PELLETS SHIPPED	TOTAL TACONITE MINED	TONS STRIPPING WASTE *	AVG. NO. PEOPLE EMPLOYED PLANTS/PITS	MAN HOURS	MONTHS WORKED
NORTH SHORE MINING COMPANY Babbitt, Silver Bay M. Mlinar, General Manager	All Tonnages in Long Tons	4,818,350	13,784,963	9,967,416	500	1,041,775	12
USX CORPORATION D. Quirk, Gen. Mgr. Minntac Plant, Mt. Iron T. 58, R. 17 Minntac Mine Minntac Plant Shop, Warehouse, & Miscellaneous	All Tonnages in Gross Tons	14,358,124.92	49,842,750	5,520,233		1,280,834	12
			Mine, Crushing, Concentrating Operations - 614			425,720	12
			Agglomerator Operations - 204			886,887	12
			Maintenance, Tech. Services, Administration - 425				
TOTAL PELLETS		40,464,088.92	135,538,123	65,342,769	3,568	7,464,447	12
TOTAL RAW ORE							
TOTAL RAW ORE AND PELLETS		40,464,089.92 TONS	TOTAL NATURAL ORE & TACONITE MINED		135,538,123 TONS		

**REPORT TO COUNTY INSPECTOR OF MINES
(Minnesota Statutes 180)
ORE SHIPPED FROM MINES, TONS OF STRIPPING REMOVED
NUMBER OF PEOPLE EMPLOYED, MINES OF ST. LOUIS COUNTY, MINNESOTA
YEAR ENDING DECEMBER 31, 2005**

NON-FERROUS MINES AND SUPERINTENDENTS	TONS OF PRODUCT SHIPPED	TOTAL ORE MINED	TONS STRIPPING WASTE *	AVG. NO. PEOPLE EMPLOYED PLANTS/PITS	MAN HOURS	MONTHS WORKED
---	-------------------------------	-----------------------	------------------------------	---	--------------	------------------

Polymet Mining Corp.
Jim Scott
Assistant Project Manager

NON-FERROUS PROPERTY, IN DEVELOPMENT, NOT IN PRODUCTION AT THIS TIME

TOTAL MATERIAL MOVEMENT
FERROUS AND NON-FERROUS

* - Total Tonnage of both waste rock and overburden removed to expose the ore body

**MINING COMPANIES, MINE OPERATIONS,
SAFETY PERSONNEL AND OTHER AGENCIES**

CLIFFS ERIE L.L.C

P.O. Box 900
Hoyt Lakes, Minnesota 55750
Phone: 218-225-4250
Fax: 218-225-4230

Bruce Gerlach Area Manager, Facilities

* * * * *

KEEWATIN TACONITE

One Mine Road
P.O. Box 217
Keewatin, Minnesota 55753
Phone: 218-778-6521

Joseph Scipioni General Manager
Dave Draves Accounting
Duane Kokkinen Area Manager - Maintenance
Darryl Maki Area Manager - Plant
John Skube Labor Relations
Scott Karpinen Manager of Safety
Don Thompson Area Manager - Mine

* * * * *

UNITED TACONITE LLC

P.O. Box 180
Eveleth, MN 55734
Phone: 218-744-7800

T.D. Roth VP & General Manager
T.W. Nanti Area Manager - Plants
M. Smith Area Manager - Mine

* * * * *

HIBBING TACONITE COMPANY

P.O. Box 589
Hibbing, Minnesota 55746
Phone: 218-262-6800

E.M. Latendresse General Manager
S.G. Rogers Area Manager - Technical Services & Environmental
T.S. Tomsich Sr. Area Manager - Financial Control
J.T. Croswell Area Manager - Mining
P.A. Carlson Area Manager - Concentrator
S.H. Romani Area Manager - Pellet Plant
D.E. McLaughlin Area Manager - Maintenance Service
D.G. Pollock Area Manager - Materials
J.C. Tamminen Area Manager - Mine Maintenance
K.K. Eggert Area Manager - Information Technology
E.G. Bryant..... Sr. Area Manager - Human Resources
J.M. Johnson..... Area Manager - Safety

* * * * *

**MITTAL STEEL USA
MINORCA MINE, INC.**

5950 Old Hwy. 53
Virginia, Minnesota 55792
Phone: 218-749-5910
Fax: 218-749-5256

DIRECTORS

Jonathan H. Holmes, Madhu G. Ranade, Carlos Hernandez,
Vaidya Sethuraman, Fernando Ruiz Sahagun

ISPAT INLAND MINING OFFICERS

Madhu G. Ranade President & COB
Jonathan H. Holmes Vice President
Thomas A. McCue Treasurer
Marc R. Jeske Secretary
Matthew Scherschel Assistant Secretary

SECTION MANAGERS

J.H. Holmes General Manager - Minorca Mine
R.E. Aaseng Manager - Plant
W.M. Bond ... Division Manager - Business & Operating Technology
S.T. VonWald Manager - Electrical/Systems
G.L. Golobich Manager - Human Resources/Labor Relations
E.A. Soderberg Plant Controller
S. W. Harrison Manager - Pit
G.R. Josephson Manager, Safety & Environmental

* * * * *

NORTHSHORE MINING COMPANY

10 Outer Drive

Silver Bay, Minnesota 55614

Phone: 218-226-4125

- M. Mlinar General Manager
- M. Buckely Area Manager, Technical Services
- B. Bundschuh Area Manager, Silver Bay Power & Energy
- C. Viola Area Manager, Finance Control
- J. Korpi Area Manager, Silver Bay Operations
- J. Sandstrom Area Manager, Railroad
- K. Kerschen Manager, Human Resources
- J. Lipovetz Area Manager, Mine
- K. Alvey Area Manager, Safety and Loss Control

NORTHSHORE MINING AREA SAFETY COORDINATORS

Phone: 218-827-2101

- D. DeBeltz Mine Safety Representative
- Laurie Rasmussen Mine Safety Associate
- Scott Eckman Maintenance
- Steve Thompson Maintenance
- Thomas Edman Maintenance
- Duane Solberg Babbitt Warehouse
- Carl Lekatz Railroad
- Tony Bee Railroad
- Tracy Lilienthal Mine
- Merle Vandervest Mine
- Brad Sader Mine
- Matt Brenny Mine
- Jim Tuomala Mine
- Eric Mayranen Mine

* * * * *

USS, A DIVISION OF USX CORPORATION

Minnesota Ore Operations

General Office - Mt. Iron, Minnesota 55768

Phone: 218-749-7200

- Dennis Quirk General Manager
- John Skube Manager - Employee Relations

ORE OPERATIONS

- Ray Luoma Division Manager - Maintenance Services
- Mike Keppel .. Division Manager - Mining, Crushing & Concentrating
- Brian Rauzi Senior Staff Supervisor - Safety & Security
- Scott Vagle .. Division Manager - Technical Services & Agglomerator
- Bob Youngman Staff Supervisor - Safety
- D.R. Savela Staff Supervisor - Safety

* * * * *

POLYMET MINING

P.O. Box 475 County Road 666
Hoyt Lakes, MN 55750

OFFICERS

- Ian Forrest Director and Chairman of the Board
- William Murray President and Chief Executive Officer
- Douglas Newby Chief Financial Officer (corporate)
- *James Swearingen Director and Chief Financial Officer
(U.S. subsidiary)
- *Warren Hudelson Executive Vice President - Development
(Director of U.S. subsidiary)
- Gaston Reymanants Vice President - Marketing

STAFF

- *Don Hunter Project Manager
- *James Scott Assistant Project Manager/Site Manager
- *Richard Patelke Project Geologist

* = Offices at the PolyMet Office at the PolyMet Hoyt Lakes Plant Site

* * * * *

ALWORTH LAND & IMPROVEMENT COMPANY

1605 Alworth Building
306 W. Superior Street
Duluth, Minnesota 55802
Phone: 218-722-0816

- R.K. Prescott Chairman
- Nicholas B. Alworth Vice Chairman
- Steven G. LaFlamme President
- Roger D. Wedin Executive Vice President
- George W. Kratzner, II Treasurer
- Thea M. Littler Secretary

* * * * *

THE AMERICAN IRON ORE ASSOCIATION

11 E. Superior Street
Suite 514
Duluth, MN 55802
Phone: (218) 722-7724
FAX: (218) 720-6707
www.aioa.org

- Frank Ongaro Executive Director

* * * * *

CONGDON MINERAL MANAGEMENT INC.

1910 East 8th Avenue
P.O. Box 650
Hibbing, Minnesota 55746
Phone: 218-262-6127

John P. Congdon President
David C. Adams Vice President
David C. Dudley Vice President, Secretary, Treasurer
David G. Meineke Vice President
Susan K. Milani Assistant Treasurer
Bethany J. Hooper Assistant Secretary

* * * * *

EVELETH FEE OFFICE, INC.

301 McKinley Avenue
P.O. Box 521
Eveleth, Minnesota 55734-0521
Phone: 218-744-4646
Fax: 218-744-2149

Daniel L. England President
Thomas J. Malkovich Vice President/Manager of Mines
Beverly A. Saranpaa Administrative Assistant

* * * * *

GREAT NORTHERN IRON ORE PROPERTIES

801 East Howard Street
P.O. Box 429
Hibbing, Minnesota 55746-0429
Phone: 218-262-3886
Fax: 218-262-4295

J.S. Micallef President and CEO
J.H. Roe, III Trustee
R.W. Staehle Trustee
R.A. Stein Trustee
T.A. Janochoski Vice President and CFO
R.P. Johnson Manager of Mines
K.A. Baehr Manager of Accounting

* * * * *

HARTLEY OFFICE

740 East Superior Street
Duluth, Minnesota 55802
Phone: 218-723-8060

Mark Myles Trust Manager

* * * * *

IRON MINING ASSOCIATION OF MINNESOTA

11 East Superior Street
Suite 514
Duluth, Minnesota 55802
Phone: 218-722-7724
Fax: 218-720-6707
www.faconite.org

Frank Ongaro President
Joe Scipioni Chair, Board of Directors
Mike Mlinar Vice Chair, Board of Directors

LEON IRON COMPANY

740 East Superior Street
Duluth, Minnesota 55802
Phone: 218-723-8060

Kenneth Maine Chief Financial Officer
Lawrence F. Bowman Chief Executive Officer

ONONDAGA IRON COMPANY

740 East Superior Street
Duluth, MN 55802
Phone: 218-723-8060

Douglas H. Lewis Chief Financial Officer
Kenneth Maine Chief Executive Officer

MERIDEN ENGINEERING LLC

1910 East 8th Avenue
P.O. Box 650
Hibbing, Minnesota 55746
Phone: 218-262-6127

D.G. Meineke President & CEO
S.K. Milani Treasurer
G.D. Lindahl Chief Mining Engineer

MESABI MINERAL ASSOCIATION

By Oneida Realty Company
1605 Alworth Building
306 W. Superior Street
Duluth, Minnesota 55802
Phone: 218-722-0816

R.K. Prescott Chairman

MINNESOTA DEPARTMENT OF NATURAL RESOURCES
500 Lafayette Road
St. Paul, Minnesota 55155
(651) 259-5959
FAX (651) 296-5939

G. Merriam Commissioner
M. Holsten Deputy Commissioner
W.C. Brice Director, Division of Lands and Minerals (LAM)
K.A. Lewis Manager, Mineral Transactions (LAM)
D. Martin Manager, Mineral Potential

Division of Lands and Minerals
1525 E. Third Avenue
Hibbing, Minnesota 55746
(218) 262-6767
FAX (218) 262-7328

M.K. Vadis Assistant Director
P.T. Clevensline Manager, Engineering & Mineral Development
A.S. Knoll Manager, Mineland Reclamation
J. Matthew Manager, Regional Operations

* * * * *

STATE OF MINNESOTA
IRON RANGE RESOURCES
MINELAND RECLAMATION DIVISION
801 SW Highway 169, Suite 2
Chisholm, Minnesota 55719
Phone: (218) 254-7967 Fax: (218) 254-7973

R. Svatos Mineland Reclamation Supervisor
D. Jordan Natural Resources Forestry Specialist, Sr.
B. Itkonen Mineland Reclamation Specialist, Sr.
G. Dormanen Mineland Reclamation Staff
S. Perkovich Office Manager

IRON RANGE RESOURCES
4261 HIGHWAY 53 SOUTH
P.O. BOX 441
EVELETH, MN 55734
Phone: (218) 744-7400 or 800-765-5043

S. Layman Commissioner Iron Range Resources
B. Hiti Deputy Commissioner, Iron Range Resources
M. Sjoberg Director, Development Strategies

* * * * *

RGGS Lands & Minerals LTD., L.P.
202 2nd Avenue South
Virginia, MN 57792
Phone: (218) 749-1291
Fax: (218) 749-1294

*** * * * ***

MINNESOTA MINE INSPECTORS
St. Louis County

Barry D. Lesar Inspector of Mines
Stanley J. Rojeski, Jr. Assistant Mine Inspector
Paul T. Wier Assistant Mine Inspector
Terrance M. O'Neil Assistant Mine Inspector

OFFICE AT
ST. LOUIS COUNTY GARAGE
Highway 135 East
Virginia, Minnesota 55792
Phone: 218-742-9840

*** * * * ***

UNITED STATES DEPARTMENT OF LABOR
MINE SAFETY AND HEALTH ADMINISTRATION
515 W. 1st Street #333
Duluth, Minnesota 55802-1302
COMM: 218-720-5448
FAX: 218-720-5650
Duluth Duty Field Station COMM: 218-720-5448

DISTRICT OFFICE

Stephen M. Richetta District Manager
Gerald D. Holeman Assistant District Manager
George F. Schorr Supv. Spec. Investigator
Stephen D. Cotie Mine Safety & Health Specialist
(Health Specialist)
William H. Pomroy.. Mine Safety & Health Specialist (Staff Assistant)
Thomas J. Pavlat Mine Safety & Health Specialist
Wayne L. Lundquist Mine Safety & Health Specialist (CLR)
Stephen W. Field Mine Safety & Health Specialist
Mary M. Mikulich Supv. Management & Program Analyst
Devon R. Willeck IT Specialist
Marlys A. Johansen Secretary (OA)
Jenna L. Nelson Management Assistant
Debra J. Johnson Mine Safety and Health Technician (OA)
Calia G.H. Kolkin Mine Inspection Records Clerk (OA)
Abdon J. Friend Mine Inspection Records Clerk (OA)

DULUTH DUTY FIELD STATION

Dale E. Hedman Mine Safety & Health Inspector
Darin F. Bainter Mine Safety & Health Inspector
Robert A. Marincel Mine Safety & Health Inspector

HIBBING FIELD OFFICE

522 East Howard Street, Suite 201A
Hibbing, Minnesota 55746
Phone: 218-262-5205
Fax: 218-262-1296

Russell T. Jarvi, Jr. Supervisory Mine Safety and Health Inspector
William G. Dethloff III Mine Safety & Health Inspector
Alan J. Brandt Mine Safety & Health Inspector (Electrical)
Richard V. Boeckermann Mine Safety & Health Inspector
Christopher A. Hensler Mine Safety & Health Inspector
Thaddeus J. Sichmeller Mine Safety & Health Inspector
John C. Koivisto Mine Safety & Health Inspector

* * * * *

MINNESOTA DEPARTMENT OF REVENUE

600 North Robert Street
St. Paul, Minnesota 55146
Phone: (651) 556-3100 Fax: (651) 297-5309

Daniel A. Salomone Commissioner
George Hoyum Director, Special Taxes Division

Minerals Tax Office

612 Pierce St.
Eveleth, Minnesota 55734-1611
Phone: (218) 744-7424 Fax: (218) 744-7421

Thomas W. Schmucker Administrative Engineer
Norma J. Krogerus Revenue Tax Specialist
Robert Wagstrom Mining Engineer
Carolyn Koskela Secretary

* * * * *

**UNITED STEEL WORKERS OF AMERICA
DISTRICT 11**

MINNEAPOLIS OFFICE

Phone: 612-623-8045

Dave Foster Director

EVELETH SUB-DISTRICT OFFICE

Phone: 218-744-2757

Fax: 218-744-7926

Robert Bratulich Sub-district Director

John Rebrovich Staff Representative

Cathy Warner Staff Representative

Peggy May Staff Representative

**UNITED STEEL WORKERS OF AMERICA
LOCAL UNITS**

LOCAL #6860

UNITED TACONITE LLC

Phone: 218-744-4480

Joe Strlekar President

John Motley Vice President

Gloria Huseby Recording Secretary

Robert Willis Financial Secretary

Larry Roberts Treasurer

Brian Lahti Safety Coordinator

Larry Roberts Plant Safety Chairman

Paul Horoshak Mine Safety Chairman

LOCAL #2660

KEEWATIN TACONITE

Phone: 218-778-6909

Loren Middlestead President

Dave Mlakar Chairman, Safety Committee

Ross Erickson Union Safety Coordinator

Carl Jeranek Area Chair, Pellet Plant

Kevin Noonan Area Chair, Concentrator

Cliff Tobey Area Chair, Shops

Jerald Kinkel Area Chair, Pit

Harlee Sirjord Area Chair, Pond

Tom Damjanovich Area Chair, Electrical

**LOCAL #2705
HIBBING TACONITE COMPANY**

Phone: 218-254-2492

Fax: 218-254-7100

115 W. Lake Street, Chisholm, MN 55719

Rich Rojaski President
Fred St. Lawrence Vice President
Bob Brown Chairman, Safety Committee
Dave Tuin First Co-Chairman, Safety Committee
Glen Saarinen Training Coordinator

**LOCAL #6115
MITTAL STEEL USA, MINORCA MINE INC.**

Phone: 218-741-3310

Marty Henry President
Dave Zasadni Vice President
Judy Henry Recording Secretary
Gerry Knaeble Chairman, Safety Committee
Jim Labernik Sub-Chair, Pit Operations/Maintenance
Skip Dickinson Sub-Chair, Plant Operations/Maintenance

**LOCAL #1938
USX - MINNTAC MINE**

Phone: 218-741-0887

Mike Woods President
Jon Malek Vice President
Steve Manninen Recording Secretary
Mike Neri Financial Secretary
Tim Carlson Safety Committee Chairman
Mark Hagsten Safety Committee Co-Chairman
Dennis Jensrud Safety Coordinator - Plants
Rodney Moberg Safety Coordinator - Mines

* * * * *

NON-FATAL LOST-TIME AND SERIOUS ACCIDENTS

MITTAL STEEL USA, MINORCA MINE, INC.

Millwright, Date of Accident- January 24, 2005. Injured suffered deep contusions to his left lower leg when it became pinched between the pickup he was attempting to free from the snow and a snow covered berm. Icy conditions caused the loader being used to pull out the pickup to slide forward into the pickup and pin his leg between the truck and the berm. Days lost- 3.

Millwright, Date of Accident- May 5, 2005. Injured fractured his left lower leg and ankle when the nylon strap being used to position an excavator track for re-attachment broke. Three track pads fell, knocking the injured to the ground and landing on his ankle. Days lost- 164.

Welder, Date of Accident- June 6, 2005. Injured suffered arc flash while working in proximity to an automatic welder while it was in operation. Days lost- 4.

Welder, Date of Accident- August 24, 2005. Injured suffered 2nd and 3rd degree burns to his palm and ring finger of his right hand when the piece of sheeting he was cutting off fell onto the oxygen hose, burned through it and caused an intense flame to contact his gloved right hand. Days lost-8.

Production truck driver, Date of Accident- September 28, 2005. Injured fractured his left ankle when he stepped back awkwardly to avoid a drill feeder cable that was being pulled by the service truck. He had been standing in the loop of the feeder cable. Days lost- 60.

Production truck driver, Date of Accident- November 2, 2005. Injured strained her neck when the lifting arms of the loader being used to fill her truck struck the truck box, causing her to be jarred in the truck cab. The horn on the loader had failed and the loader operator lowered the arms onto the truck box to prevent the truck from backing into the loader. Days lost- 2.

Furnace attendant, Date of Accident- November 24, 2005. Injured suffered a right inguinal hernia while helping a millwright re-install a 2' by 2' door on a pellet screen chute. Days lost- 20.

UNITED TACONITE LLC

MINE

Mine Maintenance Mechanic, Date of Accident - March 16, 2005. Injured was in the process of repairing hydraulic oil leaks in the machinery compartment on a mine backhoe, when he inadvertently pushed a manual actuator for the fire suppression system and actuated the fire system. This caused a discharge of dry powder into the compartment, and into the employee's face. Not knowing what happened the employee either slipped or jumped from the maintenance catwalk to the ground, which resulted in multiple injuries. Days Lost - 68

Mine Maintenance Mechanic, Date of Accident - July 12, 2005. While the employee was walking to the operations office for his work assignment, he felt his right leg twist on uneven ground. This resulted in a right knee strain. Days Lost - 6

Mine Operations, Utility Driver, Date of Accident - August 7, 2005. Employee was stepping onto the fuel truck when he felt something tear in the muscles of the right knee while on the first step. This resulted in a possible tendon tear. Days Lost - 20

Mine Maintenance, Auto Mechanic, Date of Accident - September 10, 2005. Employee was in the process of changing a ripper tooth on a D-11 Crawler Tractor. Employee was having difficulty lining the tooth to the pin, so he used a two wheeled cart to assist in prying the tooth up for alignment purposes. The cart slid out of place, causing the employee to lose his balance and fall back into the track, striking the back of his head. This resulted in stitches to the head. Days Lost - 1

PLANT

Plant Operations, Date of Accident - January 3, 2005. Employee was walking to the Pellet Sampling area when she slipped on loose pellets and fell to the floor, causing a strain to her lower back. Days Lost - 21

Plant Maintenance Mechanic, Date of Accident - June 16, 2005. Employee was in the process of removing pie liners from the feed end on the #3 ball mill. When attempting to remove the liner with a hydraulic scissor jack, the liner fell unexpectedly, striking the employee on the right arm. This resulted in lacerations which required stitches. Days Lost - 11

HIBBING TACONITE COMPANY

Gary Scherf, Shovel Operator, Date of Accident - January 5, 2005. Injured was kneeling on the operators seat of the shovel he was operating to access his carry-on bag. While kneeling the back of the seat broke causing injured to fall off of the seat. This resulted in re-aggravating an old injury. Days Lost - No Days Charged

Joseph Shea, Welder, Date of Accident - April 4, 2005. injured and partners were pulled off of their original job assignment to help the electrical repairmen remove bang boards and raise the conveyor so the repairmen could calibrate the mill feed scale. After removing four boards and raising the conveyor, it was decided to remove one more board. As the boards were removed, they were left on the conveyor including the fifth board. The injured got onto the conveyor to help in moving the fifth board further up the conveyor. In doing so, injured grabbed the end of the board when a coworker at the other end of the board pushed on the board causing injured's finger to get pinched between two boards. This resulted in a fracture to the left ring finger. Days Lost - 42

Larry Smith, Maintenance Mechanic, Date of Accident - April 6, 2005. Injured was installing an upper side plate on a pallet car when the plate came loose and started to fall. Injured leaned forward to catch the plate. When he caught the plate he felt a pressure in his abdomen. This action resulted in a hernia requiring surgical intervention. Days Lost - 9

Steve McNamara, Welder, Date of Accident - June 23, 2005. Injured was removing shell liners from the #6 Grinding Mill. The liners were placed on two 2X4's to aid removal by the Par Machine. Injured was pushing a used liner towards the scrap lugger. The liner slipped off of the 2X4's pinching his finger. This resulted in a broken left pointer finger. Days Lost - 108

James Fetzik, Maintenance Mechanic, Field, Date of Accident - June 23, 2005. Injured and one other Mechanic were taken off another job to go to the #62 Shovel to start replacing the retract cable. After attaching the replacement cable to the broken cable, injured's partner started pulling the new cable in with the service truck. When the Becket end of the cable started to go around the half sheave at the adjuster end of the stick it became hung up on the lip of the half sheave. At this time injured climbed onto the cable adjuster half sheave to attach the boom truck to the cable to help the Becket end around the half sheave. When the cable started to go around the half sheave the Becket end rolled up off of the half sheave and the cable rolled over injured's foot and trapped his leg against the stick. This resulted in crushing injuries to the right leg. Days Lost - 99

Gregory Ozanich, Maintenance Mechanic General, Date of Accident - September 15, 2005. Injured was using a small pry bar to position an apron feeder liner for access with a larger pry bar for final positioning. The liner was raised approximately 2 inches when the small bar slipped allowing the liner to fall on injured's left hand, pinning his hand between the liner and the feeder flights. This resulted in a broken ring finger on the left hand. Days Lost - 16

LTV CLIFFS LLC, ERIE MINE

- No Accidents Reported for 2005, not Operating

KEEWATIN TACONITE

No Serious or Lost Time Accidents in 2005

NORTHSHORE MINING COMPANY

Babbitt Mine

Electrician, Date of Accident - June 26, 2005. Injured was opening the west feeder isolation switch handle. When opening the handle the first half of the travel is spring loaded and the second half is spring assisted. When injured pulled the handle down, the spring assist caused injured to hit the back of his right hand against the side of the switch housing. This resulted in 2 hairline fractures to the right hand. Days Lost - 0

Silver Bay

Pellet Plant Operations, Date of Accident - March 8, 2005. Injured was tensioning a conveyor wiper by pulling on a rubber strap. While pulling, the strap slipped and injured jammed his wrist back. This resulted in damage to the wrist requiring surgical repair. Days Lost - 32

Plant Maintenance, Date of Accident - March 22, 2005. Injured was working on the north screen in the screen house. While accessing the chute for the screen he slipped on some pellets and fines in the chute, causing the left knee to buckle and twist. This resulted in damage to the knee requiring surgical repair. Days Lost - 16

Plant Maintenance, Date of Accident - May 23, 2005. While working on a lining job, injured stepped on an air remover and fell backwards, striking the air remover. This resulted in a severe laceration to his hand requiring stitches. Days Lost - 0

Plant Maintenance, Date of Accident - August 19, 2005. Injured was installing a new bearing in the screen house. The Maintenance Technician bent over to pull a socket free from a bolt. While bent over, something struck a can of ZEP spray lying near the work area and tore a 1.5 inch hole in the side of the can. The ZEP sprayed injured in the face, lifting his glasses and contacting his eyes. Injured's eyes were flushed out and injured was taken to the local health center for further treatment. Days Lost - 0

Maintenance Mechanic, Date of Accident - August 25, 2005. Injured was changing a return idler on a conveyor. The idler was full of material, very heavy and sticking in its holder. Injured freed his end with a pry bar and was holding his end up while his partner pried on the other end. The weight of the idler was more than injured was prepared for and employee's finger was caught between the idler and a structural member, resulting in a smashed finger which required stitches. Days Lost - 0

Plant Maintenance, Date of Accident - October 15, 2005. Injured and his partner were visually inspecting the fly ash system in the power house for possible material blockage. Injured reached through an open valve to clean out accumulated fly ash. While doing this the air actuated valve closed unexpectedly catching his right hand. This resulted in a fractured right thumb. Days Lost - 4

USX CORPORATION, MINNTAC MINE

Mary Caverly, Utility Tech, Date of Accident - January 10, 2005. Injured was using a 1.5 inch water hose to clean up spillage on the filter floor. When she finished cleaning one area she shut off the hose she was using and stepped back while turning to the right. At this time injured lost her balance and caught herself with her right hand to keep from falling. This action caused a fracture to her right wrist. Days Lost - 39

James Hull, Utility Tech, Date of Accident - April 28, 2005. Injured was assigned to work with a skid steer loader. After exiting the Agglomerator, injured turned the skid steer sharply to the north and attempted to access the door operator buttons without exiting the loader to close the overhead door. While reaching for the door controls, injured believes his left foot put pressure on the bucket lift controller. This caused the bucket to lift and injured's left arm was caught between the bucket lift arm and the top of the grab bar. This resulted in a fractured Radius and Ulna to the right arm. Days Lost - 13

Cindy Thompson, Utility Tech, Date of Accident - August 6, 2005. Injured was working as a line attendant. After taking samples from the hydroseparator underflow from the finisher feed distribution box, injured descended the two step stool she was using to access the sample point. When injured stepped onto the floor, her right ankle gave out causing her to fall to the floor on her right side. This resulted in a fracture to the 5th metatarsal on the right foot. Days Lost - 14