

Public Notice and Involvement in DNR Annual



Report to the Senate Environment and Natural Resources Committee,
Senate Environment and Agriculture Budget Division, and the House
Environment and Natural Resources Policy and Finance Committees

November 2005

Minnesota Department of Natural Resources
Division of Forestry



Table of Contents

Introduction	1
Annual Timber Harvest Plans	2
<i>What Is the DNR Annual Timber Harvest Plan?</i>	2
<i>Public Notice and Opportunities for Input</i>	2
<i>Public Response</i>	3
Annual Plan Additions	3
<i>What Are Annual Plan Additions?</i>	3
<i>Public Notice and Opportunities for Input</i>	4
<i>Activity During Reporting Period</i>	4
Subsection Forest Resource Management Plans	4
<i>What Is a DNR Subsection Forest Resource Management Plan (SFRMP)?</i>	4
<i>Time Frames</i>	5
<i>Public Notice and Opportunities for Input</i>	6
<i>Public Response</i>	7
Calendar of Upcoming DNR Timber Auction Sales	7
White Pine Public Involvement	8
Appendix	A-1

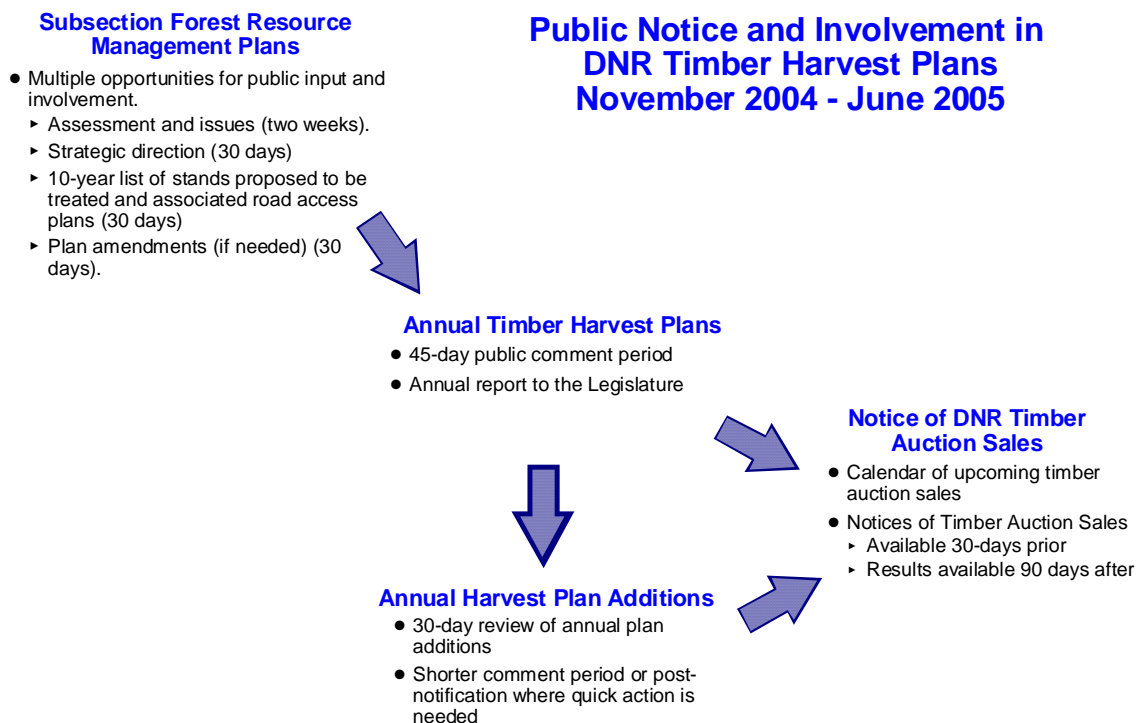
Introduction

In 2000, the Minnesota Legislature passed into law a requirement that the DNR report to the environment and natural resource policy committees on the public involvement process for DNR proposed annual timber harvest plans:

Minnesota Statutes, Section 90.042. PUBLIC INVOLVEMENT PROCESS.

By July 1 each year, the commissioner must provide a complete description of the public involvement process for timber harvest plans to the chairs of the legislative committees with jurisdiction over natural resources policy and finance. The process must provide public notice and public input in affected areas of proposed annual harvest plans.

While the legislation deals specifically with DNR annual harvest plans, the DNR has expanded the opportunities for public notice and input on DNR timber harvesting and vegetation management planning to include other venues. The chart below briefly describes the various notice and input opportunities that were available to the public during the past year. The remainder of this report will delve into each of these opportunities in more detail, providing a summary of the degree to which the public took advantage of these opportunities and examples of how the information was provided to the public. This report covers the time period encompassing the FY2006 annual timber harvest planning cycles (i.e., roughly from November 2004 through June 2005).



Annual Timber Harvest Plans

What Is the DNR Annual Timber Harvest Plan?

The DNR annual timber harvest plan (AHP) is a work plan that consists of a pool of forest stands or sites on DNR lands from which timber is being considered for sale during the upcoming state fiscal year (July 1 – June 30). Each stand has been assigned a preliminary management prescription (e.g., clear-cut harvest with reserve areas or trees, group selection harvest, thinning, re-inventory, etc.) using direction and criteria from an existing or interim management plan, specific characteristics of the stand, and desired results for the site (e.g., regeneration to a certain species or species mix, retaining certain existing trees/tree species). Prior to being offered for sale, detailed field examinations or surveys are conducted on each site to gather additional information about the site, add site-specific details to the management prescription, and make adjustments to the preliminary AHP management prescription as necessary. Most stands identified in the AHP will be appraised for some type of timber sale. Upon field visit, some stands or portions of them may be found not suitable for harvest; these stands will have their forest inventory data updated, as needed.

The DNR AHPs are derived from existing forest resource management plans, which are based on long-term forest management goals. In cases where previously adopted management plans have expired, interim management plans are developed to cover the period of time anticipated before new management plans are adopted. Interim plans are usually based primarily on the management goals and harvest levels of the previous (e.g., expired) management plan. Public review of stands selected for AHPs from interim management plans is of particular interest to the DNR since these stands are not part of previously adopted/approved management plans. For this reason, the DNR Web site for AHPs identifies stands as being from interim or adopted management plans.

Public Notice and Opportunities for Input

Web Site

In response to concerns about the availability of information on DNR timber harvest plans, the DNR began developing a Website application in the latter half of 1999 to provide interested individuals the ability to review DNR annual harvest plans online via the Internet. This application became operational early in 2000 and was improved over time based on comments from users. During 2005, this Website application has been in the process of being redesigned due to changes in the DNR's forest information system. When the Website application for public review of annual harvest plans becomes functional (estimated sometime in December 2005), the public will be notified including information on any changes in accessing or using the application. In general, users will continue to be provided a map of the state from which they can focus on stands of interest in the AHP, along with data describing stand characteristics (e.g., age, tree species, volumes, etc.), optional features (e.g., roads, streams layers), background images (e.g., satellite, aerial photos, maps), and a process for submitting comments to the DNR electronically. The Appendix contains examples from the old system of the state map (page A-1), a township map (page A-2), stand data (page A-3), and the public comment form (page A-5). Note that the look, content and options of these pages will change

under the updated Web application. However the basic functions/features will be retained (and improved).

DNR Forestry Offices

In addition to the Web site application, the AHP is available for review at DNR Area Forestry offices and in St. Paul. DNR staff are available at Area Forestry offices with maps, stand-by-stand AHP listings for their area, and a listing of AHP stands in their area that contain white pine. The Appendix includes examples of a news release for AHP public comment and availability (page A-6) and an area stand-by-stand AHP listing (page A-7).

Notification

In addition to the Web site notice, news releases are distributed to advertise the public review period and AHP availability. The notice is also sent to a mailing/e-mail list of primary interest groups and others who have requested to be on the AHP mailing list. This notice includes a link to the Web site for the Web-based application and AHP summary information, including a summary of the AHP by forest type and acres, and a summary of the AHP by management prescription type and acres. Examples are included in the Appendix, pages A-12 and A-13.

Public Response

FY2006 AHP

The FY2006 AHP has not yet been made available for public review and comment. Technical difficulties in transitioning from one data system to another have delayed the ability to redesign the Web-based application (i.e., ForestView) for reviewing AHPs. DNR will make the FY2006 AHP available to the public by the end of the calendar year as a test of the updated ForestView web application. Public notification of the FY2006 AHP will also go out at that time, along with the caveat that some stands included in the FY2006 AHP have already been field appraised and sold. While it is unfortunate that the public review of the FY2006 AHP was delayed well into FY2006, this should be an isolated, one-time event. With the transition in data systems complete and the required updates to ForestView nearly so, the FY2007 AHP is expected to be released for public review well before the start of FY2007.

Annual Plan Additions

What Are Annual Plan Additions?

Annual Plan Additions (APAs) are stands on state-administered forest lands that are proposed to be or have been added to the AHP. These adjustments to AHPs are needed at times because of new information from field surveys, changes in resource conditions (e.g., wind-throw and insect or disease damage), or nearby harvest activities. They are additional stands recommended by field personnel for timber harvest during the current fiscal year (July 1 - June 30). If possible, the management actions are delayed until the next AHP to provide ample time for notifying and soliciting comments from the public.

Public Notice and Opportunities for Input

Where quick action is not needed, the public is provided an opportunity to comment on APAs before they are offered for sale. The public is notified through the DNR Web site and the primary stakeholder mailing list. In most cases, a 30-day comment period will be provided on APAs not requiring quick action. Notices of Annual Plan Additions will be posted on the Web site: http://www.dnr.state.mn.us/forestry/harvesting/plan_additions.html for at least 30 days. An example is included in the Appendix on page A-14.

Exceptions to Prior Public Notification

Where a quick management response is needed on APAs, it will not always be possible to give prior public notification. Some general examples of these situations include:

- Addressing previously unknown pockets of insect and disease infestations or beaver flooding.
- Harvesting small acreages adjacent to timber being harvested by other landowners, especially when access is limited.
- Adjusting forest inventory stand boundaries due to errors in cover typing.
- Salvaging timber related to blowdowns, wildfires, etc.

Stands needing quick action will be included in the periodic Notice of Annual Plan Additions after information is received from field offices. Comments will be accepted regarding these sites, but management actions may have already occurred by the time the public is notified or has had time to respond.

Activity During Reporting Period

There were five APA notices posted/distributed for review related to the FY2005 AHP. The five APAs included 652 stands that encompassed 10,300 acres. A summary of the reasons for APAs to the FY2005 AHP is included beginning at page A-27. There were no public comments received on the APA stands during this reporting period.

Subsection Forest Resource Management Plans

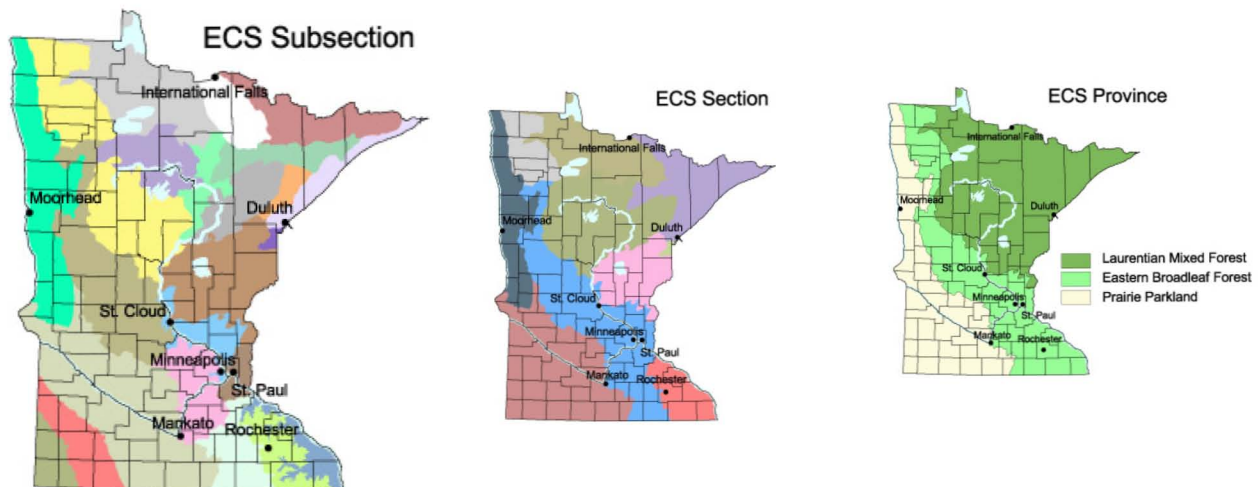
What Is a DNR Subsection Forest Resource Management Plan (SFRMP)?

For many years the DNR defined its timber harvesting activities in five- or 10-year forest resource management plans developed for each of its 30 administrative forestry areas. Public involvement in the development or review of these timber management plans was limited.

Now, the DNR is developing its forest resource management plans using the subsection level of its ecological classification system (ECS) rather than its administrative areas. It has also developed a more standardized and structured planning process that provides more opportunities for the public to be involved.

SFRMPs differ from annual planned harvest plans in that they produce 10-year lists of DNR forest stands proposed to be treated to achieve long-term forest composition goals. Annual planned harvest lists are then assembled from these 10-year plans

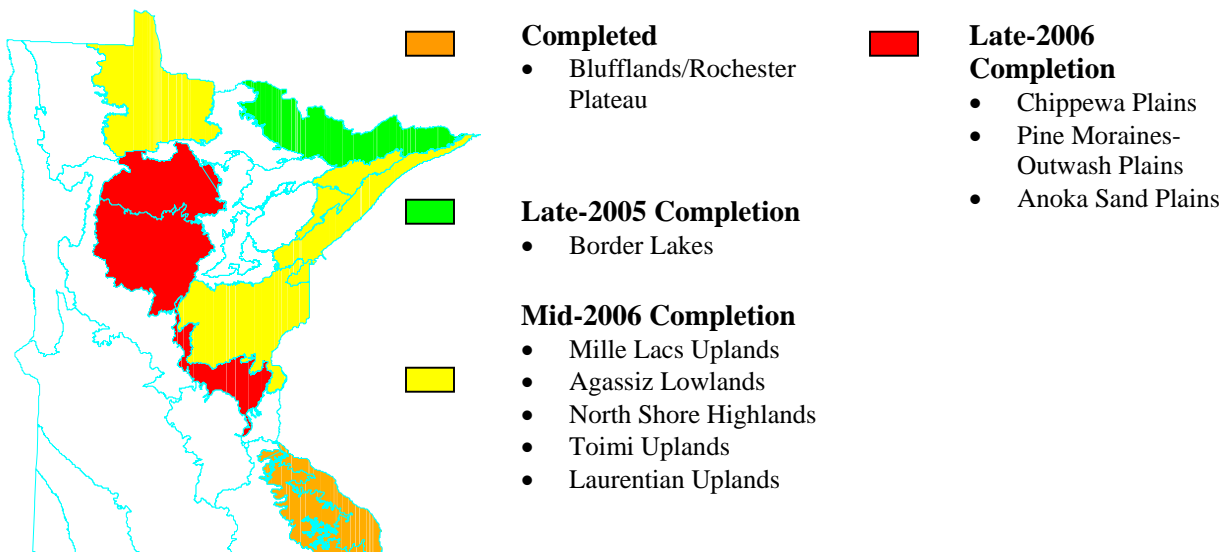
Figure 1: DNR Ecological Classification System



Time Frames

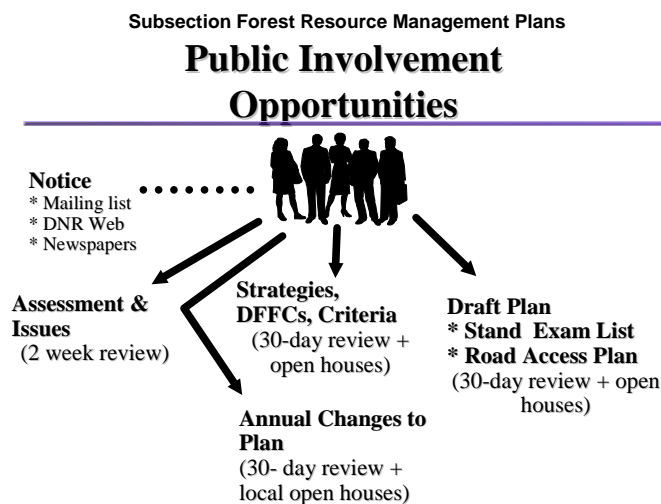
The SFRMP process is at various stages of completion in those subsections for which the process is underway. The Blufflands/Rochester Plateau is completed, except for addendums for 13 high biodiversity areas (see below). SFRMPs for Border Lakes, Mille Lacs Uplands, Agassiz Lowlands and the North Shore Area are in the final stage of the process and should be completed by the end of FY2006. The Chippewa Plains/Pine Moraines-Outwash Plains SFRMP got underway earlier this year and should be completed by the end of CY2006. The department intends to complete the SFRMP process for all forested subsections by the end of CY2007. Statewide there are 17 subsections with substantial DNR-administered forest land. Some subsection plans are being prepared jointly via the same planning team and process.

Figure 2: Current SFRMP Status



Public Notice and Opportunities for Input

Figure 3: SFRMP Public Input Opportunities



Public notice and input opportunities are available in several different ways and at several different points during the planning process, including: press releases; direct mailing of notices and document summaries; providing complete documents at DNR offices, local libraries, and via the DNR Web site; and open houses to display information and gather public comments. A statewide mailing list of over 30 interest groups and numerous media outlets, and more localized, regional lists for each subsection plan were initially used to provide notice and elicit interest

in the SFRMP processes. As the SFRMPs developed and public comments/interest were received, SFRMP mailing lists expanded in some cases up to 200-300 or more individuals and organizations.

Complete information on the DNR SFRMP process and access to plans in progress is available on the DNR Web site at <http://www.dnr.state.mn.us/forestry/subsection/index.html>.

Public Response

Assessment and Issues

There were no public reviews associated with SFRMP Assessment and Issues documents during this reporting period.

DFFC Goals, Strategies, and Stand-Selection Criteria

Public review of the North Shore SFRMP Strategic Direction document [i.e., general direction, strategies, desired future forest composition goals (DFFCs), and stand-selection criteria] took place from January 3, 2005 through February 18, 2005. Public open houses were held in Two Harbors and St. Paul on January 25th and 26th respectively. A total of 14 people attended the two open houses. Public review documents were available in hard copy, CD and via the DNR Website. Notices of the public review period, open houses, and document availability were mailed or e-mailed to 280 individuals and organizations. Review documents (with paper or CD) were mailed to 34 individuals. The DNR also issued a news release to its broad network of media outlets. Comment letters or e-mails were received from 34 individuals and organizations. DNR is currently reviewing draft responses to comments received. Final responses will be released with the public review draft of the 10-Year Stand Selection document late in December or early January.

Stand Selection and New Access Needs

Public review of the Border Lakes SFRMP 10-year Stand Selection and New Access Needs documents took place from June 15, 2005 – July 29, 2005. Public open houses were held in Orr, Grand Marais, and St. Paul on June 21st and June 22nd. A total of 17 people attended the three open houses. Public review documents were available in hard copy, CD and via the DNR Website. Notices of the public review period, open houses, and document availability were mailed or e-mailed to 175 individuals and organizations. Review documents (with paper or CD) were mailed to over 40 individuals. The DNR also issued a news release to its broad network of media outlets. Eight organizations and one individual provided extensive written comments, 316 e-mail comments were received (the vast majority were a form letter-type comment), and 72 commented via a petition. DNR staff are currently completing draft responses to comments received. Final responses and the final plan should be available by the end of CY2005 or early in 2006.

Looking Ahead

There will be a number of SFRMP public review opportunities during the next reporting period. Three SFRMP plans (Agassiz Lowlands, Mille Lacs Uplands, and North Shore) will likely conduct public review on the final stage of the planning process: the results of the seven- or 10-year stands selection and new access needs. Public review of the Chippewa Plains/Pine Moraines-Outwash Plains SFRMP Assessment and Issues document is expected before the end of the CY2005.

Calendar of Upcoming DNR Timber Auction Sales

Each year by early December, the Division of Forestry establishes a calendar of public auction sales at which state-owned timber will be sold during the next 12 to 15 months. This calendar is

posted on the DNR Web site at <http://www.dnr.state.mn.us/forestry/timbersales/index.html> as well as in local newspapers. An example is included in the Appendix on page A-29. Notices of Sale are posted on the Web site approximately 30 days before the date of each sale and are also available upon request from DNR Forestry Area offices. Notices of Sale list each tract offered, its location, the quantity and appraised price of timber on each tract, and any significant permit conditions and regulations. Results of timber auction sales showing which tracts were sold, their bid (selling) price, and who purchased them are posted approximately five days after the sale and remain available for 90 days following the date of sale.

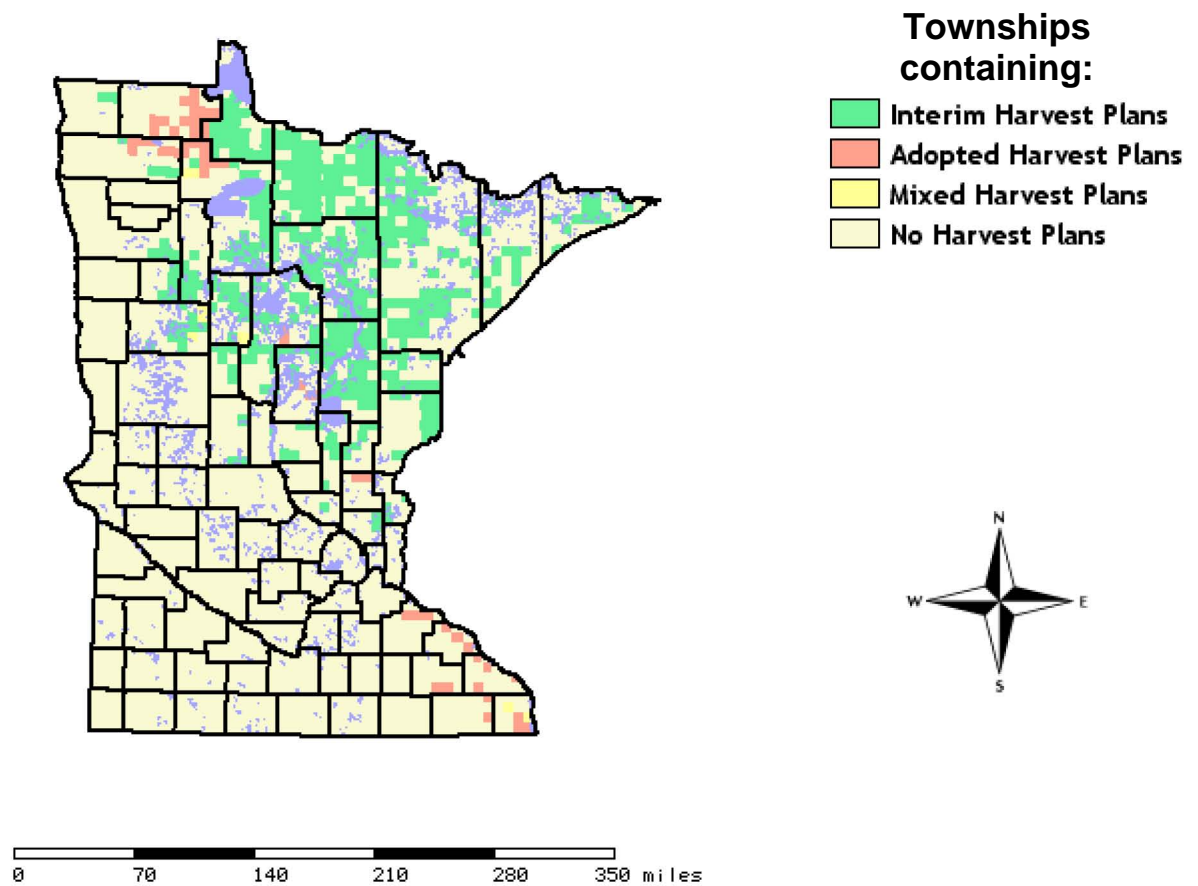
White Pine Public Involvement

During the 1997 legislative session, the DNR held discussions with a variety of interest groups to clarify statewide goals for white pine management on DNR-administered lands. These discussions resulted in the DNR making a number of commitments, including a commitment to develop an improved and more effective process of public input into DNR white pine timber management planning. These DNR commitments related to white pine timber management planning were the DNR's initial foray into re-establishing more visible and consistent opportunities for public input into DNR forest management planning. These efforts also set the stage for future evolutions in public input processes to include forest types in addition to white pine.

The DNR will continue public involvement in its white pine management as part of broader public input opportunities that include all DNR forest/timber management planning. The AHP, APA, SFRMP, and Calendar of Upcoming DNR Timber Auction Sales planning and public input processes described above address all forest types on DNR lands, including white pine, and were based to a significant extent on the public input recommendations for white pine public involvement. The DNR continues to highlight proposed management direction and stand-specific management prescriptions affecting white pine on DNR lands through these broader DNR forest/timber management planning processes. Page A-32 of the Appendix provides an example of a listing of AHP stands proposed to be offered for sale that contain white pine.

Appendix

Statewide Map Showing Townships with Harvest Plans



AHP Section Map Example



Use the map controls below to navigate the map. When you've found a stand for which you'd like to view attributes, turn on the "Get Stand Data" radio button and click in the stand on the map.

Map Controls

Layers

Apply

Set Cursor Action



Get Stand Data



zoom in



pan



zoom out

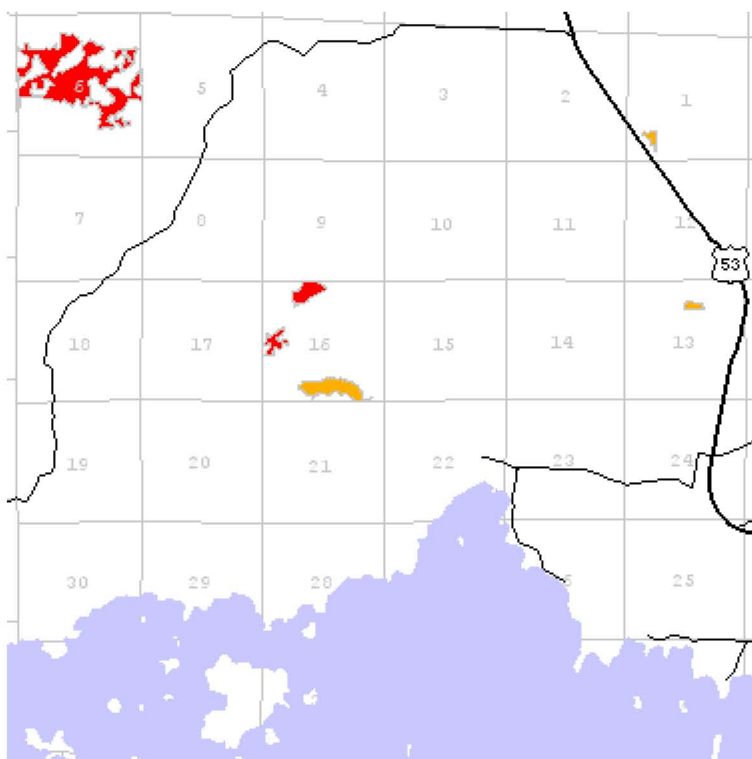
RESET

HELP

Set Zoom Factor: 2

View this area in

 ForestView



Twp T65R20W

Fiscal Year 2005 Timber Harvest Plans

-  Even-Aged Regen Harvest
-  Two-Aged Regen Harvest
-  Uneven-Aged Regen Harvest
-  Intermediate Harvest
-  Non-Timber Harvest
-  On-Site Visit
-  Reinventory



Contents © 2001 Minnesota Department of Natural Resources.
All rights reserved. [Please send us your comments.](#)



AHP Stand and Prescription Summary Example



Stand Summary

Ownership: State of Minnesota

Location: T65N, R20W, Section 16, St. Louis County

DNR Forestry Area: Orr

Stand ID: 11628065209

Stand Prescription Information

Prescription: [Clearcut- with Reserves](#)

Affected Acres: 20

The management prescription for this stand is from an **interim** plan. An interim plan is required for DNR Forestry Areas where the previous Area Timber Management Plan has expired and a new 7-year Subsection Forest Resource Management Plan has not yet been completed. Stands on the interim plan have been selected by DNR Forestry and Wildlife staff based primarily on the management goals and harvest levels of the previous forest management plan.

The purpose of listing/displaying stands from the interim plan is to notify the public of the planned forest management activity and allow the public to review the proposed management of the forest stand.

Public comments are invited.

Comments will be sent directly to the DNR Forestry Area office that administers the state forest land.

Fill Out Comment

Stand Attributes

[Cover Type](#)

Aspen

Year of Inventory: 1999

Age (at inventory): 75 years

[Average Diameter Class:](#) 9 to 14.9 inches

[Density Class:](#) 12.5-17.5 cords per acre

[Basal Area:](#) 90 square feet per acre

[Volume:](#) 17 cords per acre

[Condition Class:](#) Mature

[Understory Type](#)

Balsam Fir

[Average](#)

[Diameter Class:](#)
0 to 0.9 inches

[Density class:](#)
1,750-2,250
stems per acre

Stand Composition By Major Tree Species

Main Species in Type

Species	DBH	Volume
Trembling Aspen	12 inches	10.3 cords per acre

Other Species > 5" DBH

Paper Birch	6 inches	3 cords per acre
White Spruce	8 inches	1.7 cords per acre
Jack Pine	11 inches	1 cords per acre
Red Maple	6 inches	1 cords per acre

Other Species < 5" DBH

Balsam Fir	0-1 inches	750-1,250 stems per acre
Red Maple	0-1 inches	750-1,250 stems per acre
Trembling Aspen	0-1 inches	0-250 stems per acre
Paper Birch	0-1 inches	0-250 stems per acre

Site Attributes

[Site Index](#): 57

[Physiographic Class](#): Mesic Site

Topography: Level

Stand Area: 20 acres

[Management Status](#): Normal timber harvest allowed



Contents © 2001 Minnesota Department of Natural Resources.
All rights reserved. [Please send us your comments.](#)



Public Comment Form



Public Comment Form

Comments for interim plan at stand ID 11628065209

Location: St. Louis County, Township 65 North, Range 20 West, Section 16, Stand # 28

DNR Forestry Area: Orr (241)

The management prescription for this stand is from an **interim** plan. An interim plan is required for DNR Forestry Areas where the previous Area Timber Management Plan has expired and a new 7-year Subsection Forest Resource Management Plan has not yet been completed. Stands on the interim plan have been selected by DNR Forestry and Wildlife staff based primarily on the management goals and harvest levels of the previous forest management plan.

The purpose of listing/displaying stands from the interim plan is to notify the public of the planned forest management activity and allow the public to review the proposed management of the forest stand. Public comments are invited.

Comments will be sent to the DNR-Forestry Area office that administers the state forest land. Replies will be made after the public comment period.

Please type (or cut & paste) your comments into the box below:

To assist us in replying to your comments, please provide the following information.

Anonymous comments cannot be considered in the management of this forest stand.

Asterisks (*) indicate required fields.

*First Name:

*Last Name:

*Address:

Address:

*City:

*State: ^{MN}

*Zip:

Telephone: ()

email:

Submit

Example of AHP Review and Open House News Release

DNR NEWS - FOR IMMEDIATE RELEASE

FEBRUARY 17, 2004

Media contact: Tom Baumann, DNR forestry, St. Paul, (651) 296-4499.

Annual timber harvest plan available for review

The public is invited to review the annual timber harvest plan for state-administered forest land that has been prepared by the Minnesota Department of Natural Resources (DNR).

The annual timber harvest plan is for fiscal year 2005, which starts July 1, 2004, and ends June 30, 2005, said Tom Baumann, DNR forest resource management section manager. Comments on the planned harvest sites will be accepted through April 26, 2004.

The public has two options for reviewing harvest plans. Proposed harvest locations, management prescriptions and forest inventory information can be viewed on the DNR Web site at www.dnr.state.mn.us/forestry/harvesting/plans. Comments regarding a proposed harvest can be submitted to the DNR using this Web site.

Those who don't have convenient Internet access or who prefer to review and discuss annual harvest information directly with a forester, a second option is available. They may contact or visit their local DNR area forestry office to discuss the harvest plan or to obtain a copy of the annual harvest plan report for that administrative area.

To view forest inventory maps or aerial photos of state forest lands, which show where harvesting is planned, it is recommended that individuals contact the local area forestry office to ensure that the appropriate forestry staff will be available. Comment forms are available.

For statewide information, contact Gaylord Paulson, DNR-Division of Forestry, 500 Lafayette Road, St. Paul, MN, 55155-4044; phone (651) 205-4571.

Annual harvest plans are derived from multi-year forest management plans, which are based on long-term forest resource management goals. Forestry staff evaluates forest sites from their annual harvest plan for possible timber sales. If the site meets the criteria for a timber sale, the appraised timber will be offered for sale in the upcoming fiscal year. More than 90 percent of the timber volume will be offered for sale through public auction sales.

Example of Area Stand AHP Listing

FY2006 Annual Timber Harvest Plan for DNR Forest Lands in the Blackduck Forestry Area

<u>Area</u>	<u>Section</u>	<u>Township</u>	<u>Range</u>	<u>EW</u>	<u>Stand No.</u>	<u>Cover Type</u>	<u>Plan Acres</u>	<u>Preliminary Stand Prescription</u>	<u>Plan</u>
Blackduck	09	153	28	0	69	Aspen	9	Clearcut with Reserves	interim
Blackduck	09	153	28	0	76	Aspen	10	Clearcut with Reserves	interim
Blackduck	09	153	28	0	97	Ash	7	Uneven-Aged Regeneration Harvest	interim
Blackduck	25	153	28	0	238	Tamarack	10	Seed Tree	interim
Blackduck	25	153	28	0	253	Norway Pine	13	Commercial Thinning	interim
Blackduck	25	153	28	0	259	Aspen	41	Clearcut with Reserves	interim
Blackduck	25	153	28	0	288	Aspen	18	Clearcut with Reserves	interim
Blackduck	27	153	28	0	235	Birch	7	Manage for Understory Species	interim
Blackduck	31	154	28	0	475	Balsam Fir	9	Clearcut with Reserves	interim
Blackduck	32	154	28	0	476	Tamarack	52	Seed Tree	interim
Blackduck	05	147	29	0	753	Birch	22	Clearcut with Reserves	interim
Blackduck	05	147	29	0	791	Aspen	7	On-site Stand Evaluation	interim
Blackduck	06	147	29	0	761	Birch	11	Clearcut with Reserves	interim
Blackduck	06	147	29	0	786	Aspen	16	On-site Stand Evaluation	interim
Blackduck	09	147	29	0	127	Aspen	3	Clearcut with Reserves	interim
Blackduck	09	147	29	0	726	Aspen	2	Clearcut with Reserves	interim
Blackduck	10	147	29	0	188	Aspen	1	Clearcut with Reserves	interim
Blackduck	10	147	29	0	200	Birch	4	On-site Stand Evaluation	interim
Blackduck	10	147	29	0	729	Balm of Gilead	10	Clearcut with Reserves	interim
Blackduck	11	147	29	0	195	Aspen	3	On-site Stand Evaluation	interim
Blackduck	14	147	29	0	257	Aspen	4	Clearcut with Reserves	interim
Blackduck	15	147	29	0	220	Balm of Gilead	6	Clearcut with Reserves	interim
Blackduck	16	147	29	0	278	Ash	7	Uneven-Aged Regeneration Harvest	interim
Blackduck	17	147	29	0	653	Aspen	3	Clearcut with Reserves	interim
Blackduck	17	147	29	0	659	Aspen	17	Clearcut with Reserves	interim
Blackduck	17	147	29	0	672	Aspen	1	Manage for Understory Species	interim
Blackduck	17	147	29	0	673	Aspen	1	Clearcut with Reserves	interim
Blackduck	20	147	29	0	305	Aspen	15	Clearcut with Reserves	interim
Blackduck	20	147	29	0	679	Aspen	15	Clearcut with Reserves	interim
Blackduck	20	147	29	0	703	Birch	7	Clearcut with Reserves	interim
Blackduck	28	147	29	0	413	Birch	7	On-site Stand Evaluation	interim

<u>Area</u>	<u>Section</u>	<u>Township</u>	<u>Range</u>	<u>EW</u>	<u>Stand No.</u>	<u>Cover Type</u>	<u>Plan Acres</u>	<u>Preliminary Stand Prescription</u>	<u>Plan</u>
Blackduck	28	147	29	0	424	Birch	10	Clearcut with Reserves	interim
Blackduck	29	147	29	0	415	Aspen	3	On-site Stand Evaluation	interim
Blackduck	29	147	29	0	419	Aspen	2	On-site Stand Evaluation	interim
Blackduck	29	147	29	0	426	Aspen	5	On-site Stand Evaluation	interim
Blackduck	30	147	29	0	339	Norway Pine	3	On-site Stand Evaluation	interim
Blackduck	05	148	29	0	60	Balsam Fir	3	On-site Stand Evaluation	interim
Blackduck	08	148	29	0	271	Balsam Fir	8	On-site Stand Evaluation	interim
Blackduck	08	148	29	0	281	Balsam Fir	23	Clearcut with Reserves	interim
Blackduck	09	148	29	0	201	Tamarack	13	Seed Tree	interim
Blackduck	09	148	29	0	215	Norway Pine	6	Commercial Thinning	interim
Blackduck	09	148	29	0	217	Norway Pine	21	Commercial Thinning	interim
Blackduck	12	148	29	0	235	Ash	11	Uneven-Aged Regeneration Harvest	interim
Blackduck	12	148	29	0	286	Norway Pine	37	On-site Stand Evaluation	interim
Blackduck	16	148	29	0	406	Norway Pine	12	On-site Stand Evaluation	interim
Blackduck	17	148	29	0	297	Tamarack	36	Seed Tree	interim
Blackduck	19	148	29	0	432	Balsam Fir	5	Clearcut with Reserves	interim
Blackduck	19	148	29	0	462	Balsam Fir	7	Clearcut with Reserves	interim
Blackduck	19	148	29	0	464	Balsam Fir	8	Clearcut with Reserves	interim
Blackduck	26	148	29	0	561	Balsam Fir	7	Clearcut with Reserves	interim
Blackduck	26	148	29	0	630	Balsam Fir	4	On-site Stand Evaluation	interim
Blackduck	27	148	29	0	552	Norway Pine	13	On-site Stand Evaluation	interim
Blackduck	30	148	29	0	531	Balsam Fir	5	Clearcut with Reserves	interim
Blackduck	30	148	29	0	564	Balsam Fir	5	Clearcut with Reserves	interim
Blackduck	32	148	29	0	812	Aspen	11	Clearcut with Reserves	interim
Blackduck	36	148	29	0	861	Cedar	16	On-site Stand Evaluation	interim
Blackduck	16	149	29	0	69	Balm of Gilead	17	Clearcut with Reserves	interim
Blackduck	28	149	29	0	402	Jack Pine	6	Clearcut with Reserves	interim
Blackduck	28	149	29	0	407	Jack Pine	13	Clearcut with Reserves	interim
Blackduck	28	149	29	0	409	Jack Pine	3	Clearcut with Reserves	interim
Blackduck	31	149	29	0	284	Jack Pine	15	On-site Stand Evaluation	interim
Blackduck	31	149	29	0	317	Jack Pine	13	On-site Stand Evaluation	interim
Blackduck	34	149	29	0	392	Aspen	2	Clearcut with Reserves	interim
Blackduck	07	153	29	0	179	Aspen	12	Clearcut with Reserves	interim
Blackduck	07	153	29	0	180	Balsam Fir	20	Clearcut with Reserves	interim
Blackduck	07	153	29	0	237	Aspen	24	Clearcut with Reserves	interim
Blackduck	22	153	29	0	328	Balsam Fir	6	Manage for Understory Species	interim
Blackduck	22	153	29	0	335	Birch	14	On-site Stand Evaluation	interim

<u>Area</u>	<u>Section</u>	<u>Township</u>	<u>Range</u>	<u>EW</u>	<u>Stand No.</u>	<u>Cover Type</u>	<u>Plan Acres</u>	<u>Preliminary Stand Prescription</u>	<u>Plan</u>
Blackduck	22	153	29	0	338	Balsam Fir	30	On-site Stand Evaluation	interim
Blackduck	22	153	29	0	339	Birch	5	On-site Stand Evaluation	interim
Blackduck	25	153	29	0	369	Balsam Fir	7	Manage for Understory Species	interim
Blackduck	27	153	29	0	352	Aspen	7	Manage for Understory Species	interim
Blackduck	26	154	29	0	640	Tamarack	48	Seed Tree	interim
Blackduck	27	154	29	0	623	Tamarack	66	Seed Tree	interim
Blackduck	27	154	29	0	654	Tamarack	74	Seed Tree	interim
Blackduck	27	154	29	0	683	Tamarack	18	Seed Tree	interim
Blackduck	35	154	29	0	817	Aspen	15	Clearcut with Reserves	interim
Blackduck	35	154	29	0	838	Balsam Fir	23	Clearcut with Reserves	interim
Blackduck	02	148	30	0	14	Norway Pine	3	On-site Stand Evaluation	interim
Blackduck	10	148	30	0	180	Tamarack	83	On-site Stand Evaluation	interim
Blackduck	10	148	30	0	29	Black Spruce, Lowland	12	On-site Stand Evaluation	interim
Blackduck	10	148	30	0	30	Black Spruce, Lowland	2	On-site Stand Evaluation	interim
Blackduck	10	148	30	0	38	Tamarack	30	Seed Tree	interim
Blackduck	10	148	30	0	39	Tamarack	8	On-site Stand Evaluation	interim
Blackduck	10	148	30	0	43	Tamarack	12	On-site Stand Evaluation	interim
Blackduck	10	148	30	0	46	Tamarack	19	On-site Stand Evaluation	interim
Blackduck	14	148	30	0	63	Aspen	4	Clearcut with Reserves	interim
Blackduck	15	148	30	0	190	Aspen	4	Clearcut with Reserves	interim
Blackduck	26	148	30	0	123	White Spruce	6	On-site Stand Evaluation	interim
Blackduck	13	149	30	0	25	Ash	6	Uneven-Aged Regeneration Harvest	interim
Blackduck	35	149	30	0	145	Aspen	4	Clearcut with Reserves	interim
Blackduck	36	149	30	0	126	Norway Pine	2	Commercial Thinning	interim
Blackduck	36	149	30	0	130	Aspen	20	Clearcut with Reserves	interim
Blackduck	36	149	30	0	138	Aspen	15	Clearcut with Reserves	interim
Blackduck	36	149	30	0	144	Aspen	2	Clearcut with Reserves	interim
Blackduck	36	149	30	0	40	Jack Pine	10	Clearcut with Reserves	interim
Blackduck	05	150	30	0	154	Lowland Hardwoods	5	Uneven-Aged Regeneration Harvest	interim
Blackduck	08	150	30	0	3	Balm of Gilead	9	Clearcut with Reserves	interim
Blackduck	14	150	30	0	143	Aspen	12	Clearcut with Reserves	interim
Blackduck	14	151	30	0	14	Tamarack	13	Seed Tree	interim
Blackduck	28	151	30	0	130	Aspen	23	Clearcut with Reserves	interim
Blackduck	28	151	30	0	131	Aspen	18	Clearcut with Reserves	interim
Blackduck	28	151	30	0	57	Aspen	12	Clearcut with Reserves	interim
Blackduck	32	151	30	0	105	Balm of Gilead	8	Clearcut with Reserves	interim
Blackduck	32	151	30	0	108	Lowland Hardwoods	34	Uneven-Aged Regeneration Harvest	interim

<u>Area</u>	<u>Section</u>	<u>Township</u>	<u>Range</u>	<u>EW</u>	<u>Stand No.</u>	<u>Cover Type</u>	<u>Plan Acres</u>	<u>Preliminary Stand Prescription</u>	<u>Plan</u>
Blackduck	34	151	30	0	88	Aspen	28	Clearcut with Reserves	interim
Blackduck	34	151	30	0	90	Aspen	4	Clearcut with Reserves	interim
Blackduck	36	151	30	0	89	Balm of Gilead	19	On-site Stand Evaluation	interim
Blackduck	36	152	30	0	931	Aspen	15	Clearcut with Reserves	interim
Blackduck	05	153	30	0	590	Norway Pine	3	Commercial Thinning	interim
Blackduck	11	153	30	0	156	Aspen	32	Clearcut with Reserves	interim
Blackduck	11	153	30	0	171	Aspen	12	Clearcut with Reserves	interim
Blackduck	11	153	30	0	187	Aspen	11	Clearcut with Reserves	interim
Blackduck	12	153	30	0	115	Balsam Fir	5	On-site Stand Evaluation	interim
Blackduck	12	153	30	0	132	Aspen	39	Clearcut with Reserves	interim
Blackduck	12	153	30	0	496	Aspen	8	Clearcut with Reserves	interim
Blackduck	12	153	30	0	594	Aspen	6	Clearcut with Reserves	interim
Blackduck	15	153	30	0	199	Jack Pine	2	Clearcut with Reserves	interim
Blackduck	16	153	30	0	266	Balm of Gilead	21	Manage for Understory Species	interim
Blackduck	16	153	30	0	559	Balsam Fir	3	Clearcut with Reserves	interim
Blackduck	17	153	30	0	231	Aspen	39	Clearcut with Reserves	interim
Blackduck	17	153	30	0	490	Aspen	16	Clearcut with Reserves	interim
Blackduck	20	153	30	0	304	Lowland Hardwoods	35	On-site Stand Evaluation	interim
Blackduck	26	153	30	0	435	Aspen	4	Clearcut with Reserves	interim
Blackduck	35	153	30	0	440	Norway Pine	37	Commercial Thinning	interim
Blackduck	35	153	30	0	455	Norway Pine	11	Commercial Thinning	interim
Blackduck	35	153	30	0	459	Norway Pine	4	Commercial Thinning	interim
Blackduck	24	154	30	0	206	Black Spruce, Lowland	42	Clearcut with Reserves	interim
Blackduck	34	154	30	0	400	Balsam Fir	13	Clearcut with Reserves	interim
Blackduck	34	154	30	0	420	Balsam Fir	14	Clearcut with Reserves	interim
Blackduck	34	154	30	0	422	Balsam Fir	14	Clearcut with Reserves	interim
Blackduck	16	148	31	0	90	Northern Hardwoods	4	Clearcut with Reserves	interim
Blackduck	26	148	31	0	170	Tamarack	10	On-site Evaluation-High Risk/Low Volume	interim
Blackduck	26	148	31	0	284	Balsam Fir	4	Clearcut with Reserves	interim
Blackduck	28	148	31	0	182	Balsam Fir	15	Clearcut with Reserves	interim
Blackduck	36	149	31	0	99	Lowland Hardwoods	12	Uneven-Aged Regeneration Harvest	interim
Blackduck	05	150	31	0	18	Aspen	12	On-site Stand Evaluation	interim
Blackduck	05	150	31	0	21	Birch	8	Clearcut with Reserves	interim
Blackduck	06	150	31	0	20	Balm of Gilead	37	Clearcut with Reserves	interim
Blackduck	06	150	31	0	26	Black Spruce, Lowland	12	Clearcut with Reserves	interim
Blackduck	06	150	31	0	29	Aspen	7	Clearcut with Reserves	interim
Blackduck	28	150	31	0	99	Black Spruce, Lowland	41	On-site Evaluation-High Risk/Low Volume	interim

<u>Area</u>	<u>Section</u>	<u>Township</u>	<u>Range</u>	<u>EW</u>	<u>Stand No.</u>	<u>Cover Type</u>	<u>Plan Acres</u>	<u>Preliminary Stand Prescription</u>	<u>Plan</u>
Blackduck	15	151	31	0	55	Black Spruce, Lowland	6	Clearcut with Reserves	interim
Blackduck	15	151	31	0	66	Aspen	13	Clearcut with Reserves	interim
Blackduck	16	151	31	0	11	Black Spruce, Lowland	37	On-site Evaluation-High Risk/Low Volume	interim
Blackduck	16	151	31	0	56	Aspen	16	On-site Evaluation-High Risk/Low Volume	interim
Blackduck	25	152	31	0	636	Balsam Fir	8	Clearcut with Reserves	interim
Blackduck	25	152	31	0	656	Aspen	4	Clearcut with Reserves	interim
Blackduck	26	152	31	0	676	Aspen	14	Clearcut with Reserves	interim
Blackduck	32	152	31	0	799	Aspen	4	Clearcut with Reserves	interim
Blackduck	32	152	31	0	825	Jack Pine	6	Clearcut with Reserves	interim
Blackduck	32	152	31	0	836	Aspen	67	On-site Stand Evaluation	interim
Blackduck	32	152	31	0	892	Balm of Gilead	6	Clearcut with Reserves	interim
Blackduck	15	153	31	0	396	Aspen	10	Clearcut with Reserves	interim
Blackduck	16	153	31	0	158	Aspen	10	Clearcut with Reserves	interim
Blackduck	22	153	31	0	191	Aspen	5	Clearcut with Reserves	interim
Blackduck	22	153	31	0	72	Aspen	10	Clearcut with Reserves	interim
Blackduck	22	153	31	0	73	Aspen	14	Clearcut with Reserves	interim
Blackduck	24	153	31	0	452	Aspen	12	Clearcut with Reserves	interim
Blackduck	24	153	31	0	454	Balm of Gilead	19	Clearcut with Reserves	interim
Blackduck	24	153	31	0	458	Aspen	12	Clearcut with Reserves	interim
Blackduck	01	149	32	0	24	Black Spruce, Lowland	14	Clearcut with Reserves	interim
Blackduck	28	149	32	0	137	Balm of Gilead	10	Clearcut with Reserves	interim
Blackduck	26	152	32	0	245	Aspen	7	Clearcut with Reserves	interim
Blackduck	26	152	32	0	260	Aspen	9	Clearcut with Reserves	interim
Blackduck	26	152	32	0	298	Aspen	10	Clearcut with Reserves	interim
Total Acres:							2348		

FY2006 Harvest Plan Cover Type Acres (Statewide Summary)

<u>Forest Cover</u>	<u>Plan Acres</u>
Ash	1755
Aspen	27173
Birch	4084
Balm of Gilead	1832
Northern Hardwoods	4533
Walnut	56
Oak	2875
Central Hardwoods	97
White Pine	453
Norway Pine	3169
Jack Pine	3757
Scotch Pine	21
White Spruce	1811
Balsam Fir	3565
Black Spruce, Lowland	7398
Tamarack	6362
Cedar	1145
Black Spruce, Upland	470
Stagnant Spruce	127
Offsite Aspen	22
Offsite Oak	65
Cutover Area	5
Upland Grass	10
Lowland Brush	150
Upland Brush	20
Lowland Hardwoods	1183
Agriculture	10
Road	4
Marsh	20
Muskeg	63
Statewide Total:	72235

FY2006 Harvest Plan Prescription Acres (Statewide Summary)

<u>Prescription Code</u>	<u>Prescription Type</u>	<u>Plan Acres</u>
1100	Even-Aged Regeneration Harvest	4703
1110	Clearcut	82
1111	Clearcut with Reserves	21915
1113	Clearcut with Reserves - Sprouting	9799
1116	Clearcut - Natural Seeding	33
1117	Clearcut with Reserves - Natural Seeding	17
1118	Clearcut - Artificial Seeding	1094
1119	Clearcut with Reserves - Artificial Seeding	2907
1120	Seed Tree	1173
1121	Seed Tree with Reserves	36
1122	Seed Tree - Interim Cut	174
1130	Shelterwood	142
1140	Salvage - Clearcut	70
1147	Salvage with Reserves - Clearcut - I & D	115
1148	Salvage - Clearcut - Environment (Beaver Flooded)	24
1149	Salvage with Reserves - Clearcut - Env. (Beaver)	13
1200	Two-Aged Regeneration Harvest	134
1212	Clearcut with Reserves - Sprouting	1521
1216	Clearcut with Reserves - Natural Seeding	34
1300	Uneven-Aged Regeneration Harvest	1751
1310	Group Selection	119
1330	Single Tree Selection	2143
1800	Intermediate Treatment	3743
1810	Commercial Thinning	4420
1814	Row Thinning - Commercial	81
1820	Selective Thinning - Commercial	1058
1840	Salvage Cut - Selective Harvest	64
1940	Manage for Understory Species	438
1952	Decorative Trees	304
9100	On-site Stand Evaluation	8622
9101	On-site Evaluation - High Risk or Low Volume Stand	4804
9110	Re-Inventory	702
Statewide Total:		72235

Notice of Annual Plan Additions

Notice of Annual Plan Additions Fiscal Year 2005 Harvest Plan Addition No. 5

This notice is to inform you of additional harvest plans for Fiscal Year 2005 (July 1, 2004 - June 30, 2005) and Fiscal Year 2006 (July 1, 2005 - June 30, 2006). The following stands were not listed on the DNR Annual Timber Harvest Plans web site: <http://www.dnr.state.mn.us/forestry/harvesting/plans.html>. Stand locations (Township-Range-Section) can be viewed through the ForestView web site: <http://www.ra.dnr.state.mn.us/forestview/>. For information on the upcoming state timber auction sales, see <http://www.dnr.state.mn.us/forestry/timbersales/index.html> or contact the Area Forestry Office where the timber is being sold. *Note: Some of the listed sites have been or may be sold prior to the end of the comment period. Timber sales will not be changed after they are sold.* Harvest Methods and Reasons for Additions descriptions are included at the end of this document in Tables 1 and 2.
Comment period ends May 31, 2005.

Forestry Area	Stand No.	Legal Description			Acres	Cover Type	Harvest Method	Reason for Addition	Sale Date
		Sec	Twp	Rge					
Blackduck	461	23	153	31	7	Aspen	Clearcut-w/Rsrv-Sprouting	Adjacent/Advanced Decline	6/22/2005
Blackduck	22	13	149	30	8	Aspen	Clearcut-w/Rsrv-Sprouting	Advanced Decline	6/22/2005
Blackduck	242	8	153	29	5	Ash	Clearcut-w/Rsrv-Sprouting	Mistyped	6/22/2005
Blackduck	248	8	153	29	12	Cedar	Clearcut-w/Rsrv-Sprouting	Mistyped	6/22/2005
Blackduck	25	23	153	32	5	Ash	Clearcut-w/Rsrv-Sprouting	Mistyped	6/22/2005
Blackduck	117	7	153	30	10	Ash	Clearcut-w/Rsrv-Sprouting	Mistyped	6/22/2005
Blackduck	346	36	149	29	20	Tamarack	Seed Tree	Mistyped	6/22/2005
Blackduck	347	36	149	29	6	Tamarack	Seed Tree	Mistyped	6/22/2005
Blackduck	354	36	149	29	5	Lowland Brush	Seed Tree	Mistyped	6/22/2005

Forestry Area	Stand No.	Legal Description			Acres	Cover Type	Harvest Method	Reason for Addition	Sale Date
		Sec	Twp	Rge					
Bemidji-Bagley	549	34	143	38	8	White Spruce	Commercial Thinning	Density	4/2005
Bemidji-Bagley	550	34	143	38	6	Aspen	Clearcut-w/Rsrv-Sprouting	Adjacent	4/2005
Bemidji-Bagley	153	26	144	31	15	Aspen	Selective Thinning	Adjacent	6/1/2005
Bemidji-Bagley	157	26	144	31	8	Jack Pine	Selective Thinning	Adjacent	6/1/2005
Bemidji-Bagley	178	27	144	31	8	Jack Pine	Selective Thinning	Adjacent	6/1/2005
Bemidji-Bagley	179	27	144	31	8	Aspen	Selective Thinning	Adjacent	6/1/2005
Bemidji-Bagley	263	28	144	31	31	Red Pine	Selective Thinning	Adjacent/Mistyped	6/1/2005
Bemidji-Bagley	265	28	144	31	15	Jack Pine	Selective Thinning	Adjacent/Mistyped	6/1/2005
Bemidji-Bagley	236	33	144	31	28	Aspen	Selective Thinning	Adjacent/Mistyped	6/1/2005
Bemidji-Bagley	218	28	144	31	6	Red Pine	Selective Thinning	Adjacent/Mistyped	6/1/2005
Bemidji-Bagley	181	28	144	31	22	Red Pine	Selective Thinning	Adjacent/Mistyped	6/1/2005
Bemidji-Bagley	190	28	144	31	5	Red Pine	Selective Thinning	Adjacent/Mistyped	6/1/2005
Bemidji-Bagley	89	24	145	30	13	Balsam Fir	Selective Thinning	Adjacent/Mistyped	6/1/2005
Bemidji-Bagley	81	13/2 4	145	30	4	Tamarack	Selective Thinning	Adjacent/Mistyped	6/1/2005
Bemidji-Bagley	18	2	145	39	9	Jack Pine	Salvage-Clearcut	Jack Pine Budworm	6/1/2005
Bemidji-Bagley	189	23	145	39	6	Aspen	Clearcut-Sprouting	Adjacent	6/1/2005
Bemidji-Bagley	37	2	145	39	71	Jack Pine	Salvage-Clearcut	Jack Pine Budworm	6/1/2005

Forestry Area	Stand No.	Legal Description			Acres	Cover Type	Harvest Method	Reason for Addition	Sale Date
		Sec	Twp	Rge					

Baudette	94	11	157	35	13	Balm of Gilead	Clearcut-w/Rsrv-Natural Seeding	Mistyped	2/11/2005
Baudette	246	27	158	30	19	Tamarack	Salvage-Clearcut-Windstorm	Salvage	3/4/2005
Baudette	240	27	158	30	7	Tamarack	Salvage-Clearcut-I & D	Windthrow	3/4/2005
Baudette	613	5	160	34	8	Aspen	Clearcut-w/Rsrv-Sprouting	On-Site Visit	6/7/2005
Baudette	6	6	160	34	11	Aspen	Clearcut-w/Rsrv-Sprouting	On-Site Visit	6/7/2005

Forestry Area	Stand No.	Legal Description			Acres	Cover Type	Harvest Method	Reason for Addition	Sale Date
		Sec	Twp	Rge					
Backus	107	11	139	26	8	Lowland Brush	Clearcut-w/Rsrv-Sprouting	Mistyped	6/3/2005
Backus	55	1	139	26	13	Aspen	Clearcut-w/Rsrv-Sprouting	Mistyped	6/3/2005
Backus	77	9	138	31	8	Red Pine	Selective Thinning-Remove aspen	Adjacent	6/3/2005
Backus	117	5	140	31	15	Birch	Clearcut-w/Rsrv-Sprouting	Adjacent/Access	6/3/2005
Backus	13	8	140	31	5	Jack Pine	Clearcut-w/Rsrv-Sprouting	Adjacent/Access	6/3/2005

Forestry Area	Stand No.	Legal Description			Acres	Cover Type	Harvest Method	Reason for Addition	Sale Date
		Sec	Twp	Rge					
Park Rapids	379	24/25	142	32	9	White Pine	Shelterwood-w/Rsrv-Intrm Cut	Density/Disease	5/17/2005

Over-mature aspen, some red pine, and the poor condition/damaged white pines are being selectively harvested from this white pine stand.

Forestry Area	Stand No.	Legal Description			Acres	Cover Type	Harvest Method	Reason for Addition	Sale Date
		Sec	Twp	Rge					
Deer River	196	27	56	27	7	Tamarack	Clearcut-w/Reserves	Insects/Disease	6/8/2005
Deer River	195	27	56	27	25	Black Spruce	Clearcut-w/Reserves	Disease	6/8/2005
Deer River	179	27	56	27	30	Lowland Brush – Black Spruce	Clearcut-w/Reserves	Disease	6/8/2005

Deer River	130	18	57	26	12	Tamarack	Clearcut-w/Rsrv-Natural Seeding	Insects/Disease	6/8/2005
Deer River	201	7	146	25	31	Tamarack	Clearcut-Natural Seeding	Bark Beetles	6/8/2005
Deer River	135	12	146	26	11	Tamarack	Clearcut-Natural Seeding	Bark Beetles	6/8/2005

Forestry Area	Stand No.	Legal Description			Acres	Cover Type	Harvest Method	Reason for Addition	Sale Date
		Sec	Twp	Rge					
Effie	358	36	149	27	12	Ash	Shelterwood	Adjacent/Access	6/8/2005

Forestry Area	Stand No.	Legal Description			Acres	Cover Type	Harvest Method	Reason for Addition	Sale Date
		Sec	Twp	Rge					
Hibbing	165	16	59	20	38	Aspen	Clearcut-w/Reserves	Hypoxylon & Decay	5/25/2005
Hibbing	163	16	59	20	6	Lowland Brush	Clearcut-w/Reserves	Hypoxylon & Decay	5/25/2005
Hibbing	351	32	57	16	19	Tamarack	Clearcut-w/Reserves	Adjacent/Mistyped	5/25/2005
Hibbing	783	35	59	23	18	Black Spruce Upland	Clearcut-Artificial Regen	Adjacent/Disease	5/25/2005
Hibbing	786	35	59	23	6	Black Spruce Lowland	Clearcut-Artificial Regen	Adjacent	5/25/2005

Forestry Area	Stand No.	Legal Description			Acres	Cover Type	Harvest Method	Reason for Addition	Sale Date
		Sec	Twp	Rge					
Aitkin	717	19	45	23	8	Aspen	Clearcut-w/Rsrv-Art Regen	Mistyped	5/16/2005
Aitkin	146	28	50	25	8	Lowland Brush	Clearcut-w/Rsrv-Sprouting	Mistyped	5/16/2005
Aitkin	69	28	50	25	6	Aspen	Clearcut-w/Rsrv-Sprouting	Adjacent	5/16/2005
Aitkin	38	6	50	26	11	Aspen	Clearcut-w/Rsrv-Sprouting	Mistyped	5/16/2005
Aitkin	754	6	50	26	8	Aspen	Clearcut-w/Rsrv-Sprouting	Mistyped	5/16/2005

Aitkin	579	32	51	24	5	Lowland Brush	Clearcut-w/Rsrv-Sprouting	Mistyped	5/16/2005
Aitkin	315	16	51	25	7	Aspen	Clearcut-w/Rsrv-Sprouting	Adjacent	5/16/2005
Aitkin	382	21	51	25	6	Ash	Clearcut-w/Rsrv-Sprouting	Adjacent	5/16/2005
Aitkin	25	18	52	22	13	Aspen	Clearcut-w/Rsrv-Sprouting	Mistyped	5/16/2005
Aitkin	152	4	45	22	6	Aspen	Selective Thinning	Mistyped	5/16/2005
Aitkin	98	7	51	26	12	Northern Hardwoods	Clearcut-w/Rsrv-Sprouting	Adjacent	5/16/2005
Aitkin	611	16	51	26	5	Lowland Brush	Clearcut-w/Rsrv-Sprouting	Mistyped	5/16/2005
Aitkin	160	7	52	24	6	Aspen	Clearcut-w/Rsrv-Sprouting	Adjacent	5/16/2005
Aitkin	364	31	52	24	8	Aspen	Clearcut-w/Rsrv-Sprouting	Advanced Decline	5/16/2005
Aitkin	329	20	52	26	13	Northern Hardwoods	Salvage Cut – Selective Harvest	Other Insects – Two lined chestnut borer	5/16/2005
Aitkin	301	20	52	26	20	Northern Hardwoods	Salvage Cut – Selective Harvest	Other Insects – Two lined chestnut borer	5/16/2005

Forestry Area	Stand No.	Legal Description			Acres	Cover Type	Harvest Method	Reason for Addition	Sale Date
		Sec	Twp	Rge					
Orr	271	32	64	19	11	Black Spruce	Seed Tree	Adjacent	6/6/2005
Orr	133	22	66	18	23	White Pine	Clearcut-w/Rsrv-Natural Seeding	Mistyped	6/6/2005
Orr	50	34	67	18	10	White Spruce	Clearcut-w/Rsrv-Sprouting	Windthrow	6/6/2005
Orr	326	24	68	21	14	Aspen	Clearcut-w/Rsrv-Sprouting	Windthrow	6/6/2005
Orr	297	19	68	20	8	Aspen	Clearcut-w/Rsrv-Sprouting	Windthrow	6/6/2005
Orr	147	10	68	20	7	Jack Pine	Selective Thinning	Adjacent	6/6/2005
Orr	24	4	66	21	10	Aspen	Clearcut/w Rerv-Art Regen	Mistyped	6/6/2005
Orr	218	6	69	21	6	Aspen	Clearcut-w/Rsrv-Sprouting	Advanced Decline	6/6/2005

Orr	217	6	69	21	14	Aspen	Clearcut-w/Rsrv-Sprouting	Advanced Decline	6/6/2005
Orr	5	3	64	21	7	Cedar	Clearcut-w/Rsrv-Sprouting	Mistyped	6/6/2005

Forestry Area	Stand No.	Legal Description			Acres	Cover Type	Harvest Method	Reason for Addition	Sale Date
		Sec	Twp	Rge					
Tower	58	36	59	14	8	Black Spruce	Clearcut-Artificial Regen	FY2006 Plan	6/6/2005
Tower	76	36	59	14	37	Black Spruce	Clearcut-Artificial Regen	FY2006 Plan	6/6/2005
Tower	82	36	59	14	29	Black Spruce	Clearcut-Artificial Regen	FY2006 Plan	6/6/2005
Tower	222	12	59	14	66	Black Spruce	Clearcut-Artificial Regen	Dwarf Mistletoe	6/6/2005

Forestry Area	Stand No.	Legal Description			Acres	Cover Type	Harvest Method	Reason for Addition	Sale Date
		Sec	Twp	Rge					
Cloquet	170	34	46	16	50	Aspen	Clearcut-w/Reserves	Other*	FY2006
Cloquet	252	26	52	17	13	Balsam Fir	Clearcut-w/Reserves	Other	FY2006
Cloquet	259	26	52	17	22	Balsam Fir	Clearcut-w/Reserves	Other	FY2006
Cloquet	264	26	52	17	4	Balsam Fir	Clearcut-w/Reserves	Other	FY2006
Cloquet	21	1	50	18	17	Balsam Fir	Clearcut-w/Reserves	Other	FY2006
Cloquet	115	11	48	19	6	Balsam Fir	Clearcut-w/Reserves	Other	FY2006
Cloquet	265	16	52	16	18	Balsam Fir	Clearcut-w/Reserves	Other	FY2006
Cloquet	42	30	47	16	19	Balsam Fir	Clearcut-w/Reserves	Other	FY2006
Cloquet	49	30	47	16	6	Aspen	Clearcut-w/Reserves	Other	FY2006
Cloquet	50	30	47	16	7	Aspen	Clearcut-w/Reserves	Other	FY2006
Cloquet	51	30	47	16	6	Balsam Fir	Clearcut-w/Reserves	Other	FY2006

Cloquet	54	30	47	16	10	Aspen	Clearcut-w/Reserves	Other	FY2006
Cloquet	57	30	47	16	4	Aspen	Clearcut-w/Reserves	Other	FY2006
Cloquet	58	30	47	16	33	Aspen	Clearcut-w/Reserves	Other	FY2006
Cloquet	61	30	47	16	2	Ash	Single Tree Selection	Other	FY2006
Cloquet	59	30	47	16	8	Balsam Fir	Clearcut-w/Reserves	Other	FY2006
Cloquet	75	31	47	16	11	Aspen	Clearcut-w/Reserves	Other	FY2006
Cloquet	77	31	47	16	3	Ash	Single Tree Selection	Other	FY2006
Cloquet	340	24	46	16	68	Birch	Clearcut-w/Reserves	Other	FY2006
Cloquet	19	12	48	17	8	Aspen	On-Site Visit	Other	FY2006
Cloquet	151	11	48	17	11	Aspen	On-Site Visit	Other	FY2006
Cloquet	62	32	47	16	19	White Spruce	On-Site Visit	Other	FY2006
Cloquet	600	20	49	19	17	Balsam Fir	Clearcut-w/Reserves	Advanced Decline	FY2006
Cloquet	592	20	49	19	13	Birch	Clearcut-w/Reserves	Advanced Decline	FY2006
Cloquet	533	20	49	19	40	Birch	Clearcut-w/Reserves	Advanced Decline	FY2006
Cloquet	587	20	49	19	6	Birch	Clearcut-w/Reserves	Advanced Decline	FY2006
Cloquet	70	8	53	13	33	Aspen	Shelterwood-w/Reserves	Adjacent	FY2006
Cloquet	428	27	55	14	19	Aspen	Clearcut-w/Reserves	Substitution	FY2006
Cloquet	20	4	52	17	39	Aspen	Clearcut-w/Rsrv-Sprouting	Advanced decline	FY2006

***Other:** These stands were brought forward from future fiscal years in the SFRMP plan to FY2006 to better balance the volume offered over the next few years.

Forestry Area	Stand No.	Legal Description			Acres	Cover Type	Harvest Method	Reason for Addition	Sale Date
		Sec	Twp	Rge					
Sandstone	35	16	40	20	12	Ash	Shelterwood	Substitution	6/29/2005

Sandstone	81	13	42	23	24	Aspen	Clearcut-w/Reserves	Cooperation	6/29/2005
-----------	----	----	----	----	----	-------	---------------------	-------------	-----------

Forestry Area	CSA Stand No.	Legal Description			Acres	Cover Type	Harvest Method	Reason for Addition	Sale Date
		Sec	Twp	Rge					
Littlefork	8	33	156	29	9	Aspen	Salvage-Clearcut-Windstorm	Windthrow/Stem Breakage	12/28/2004
Littlefork	18	16	65	26	15	Lowland Hardwoods	Group Selection-w/Rsvr	Advanced Decline	12/28/2004
Littlefork	10	32	68	25	28	Black Spruce	Salvage-Clearcut-Windstorm	Windthrow/Stem Breakage	1/25/2005
Littlefork	7	32	68	25	7	Black Spruce	Salvage-Clearcut-Windstorm	Windthrow/Stem Breakage	1/25/2005
Littlefork	18	30	68	25	9	Aspen	Salvage-Clearcut-Windstorm	Windthrow/Stem Breakage	12/22/2004
Littlefork	23	30	68	25	11	Ash	Salvage-Clearcut-Windstorm	Windthrow/Stem Breakage	12/22/2004
Littlefork	2	33	155	27	6	Tamarack	Clearcut	Boundary	6/2/2005
Littlefork	4	26	65	24	5	Balm of Gilead	Clearcut-w/Rsrv-Sprouting	Adjacent	12/16/2004
Littlefork	4	17	155	29	7	Balm of Gilead	Clearcut	Adjacent	2/7/2005
Littlefork	20	24	155	25	7	Lowland Hardwoods	Clearcut-w/Rsrv-Sprouting	Boundary	6/2/2005
Littlefork	1	27	69	22	9	Black Spruce	Clearcut-Artificial Regen	Substitution	6/2/2005
Littlefork	1	28	69	22	41	Black Spruce	Clearcut-Artificial Regen	Substitution	6/2/2005
Littlefork	4	27	156	25	9	White Spruce	Row Thinning	Adjacent	6/2/2005
Littlefork	5	27	156	25	16	Northern Hardwoods	Clearcut-w/Rsrv-Sprouting	Substitution	6/2/2005
Littlefork	6	10	155	27	10	Black Spruce	Clearcut-Artificial Regen	Substitution	6/2/2005
Littlefork	1	15	155	27	22	Stagnant Spruce	Clearcut-Artificial Regen	Substitution	6/2/2005
Littlefork	3	15	155	27	71	Black Spruce	Clearcut-Artificial Regen	Substitution	6/2/2005
Littlefork	4	15	155	27	8	Tamarack	Clearcut-Artificial Regen	Substitution	6/2/2005

Littlefork	7	15	155	27	14	Black Spruce	Clearcut-Artificial Regen	Substitution	6/2/2005
Littlefork	9	9	157	26	8	Aspen	Clearcut-w/Rsrv-Sprouting	Mistyped	6/2/2005
Littlefork	54	29	67	23	5	Cedar	Clearcut-w/Rsrv-Natural Seeding	Mistyped	6/2/2005
Littlefork	17	1	156	25	5	Black Spruce	Clearcut-Artificial Regen	Mistyped	6/2/2005
Littlefork	3	26	67	25	10	Lowland Brush	Clearcut-w/Rsrv-Sprouting	Mistyped	6/2/2005
Littlefork	3	17	157	26	18	Black Spruce	Clearcut-Artificial Regen	Mistyped	6/2/2005
Littlefork	2	17	157	26	5	Black Spruce	Clearcut-Artificial Regen	Mistyped	6/2/2005
Littlefork	2	21	157	26	6	Black Spruce	Clearcut-Artificial Regen	Mistyped	6/2/2005
Littlefork	26	23	66	23	5	Black Spruce	Clearcut-w/Rsrv-Sprouting	Mistyped	6/2/2005
Littlefork	9	33	155	25	11	White Spruce	Strip Thinning	Density	6/2/2005
Littlefork	10	33	155	25	7	White Spruce	Strip Thinning	Density	6/2/2005
Littlefork	4	28	68	23	11	Aspen	Clearcut-w/Rsrv-Sprouting	Adjacent	6/2/2005
Littlefork	13	22	155	26	7	Black Spruce	Clearcut-Artificial Regen	Mistyped	6/2/2005
Littlefork	5	18	65	24	27	Black Spruce	Clearcut-w/Rsrv-Art Regen	Advanced Decline	6/2/2005

If you have comments on any of the listed stands, please respond by May 31, 2005. This notice is posted on the DNR web site, Current Notices of Annual Plan Additions: http://www.dnr.state.mn.us/forestry/harvesting/plan_additions.html .

Send comments or questions to Gaylord Paulson, DNR-Division of Forestry, 500 Lafayette Road, St. Paul, MN 55155-4044, e-mail: Gaylord.Paulson@dnr.state.mn.us , Fax No. 651-296-5954, or call: 651-205-4571. Include the Forestry Area, Stand No., and Legal Description with your comments.

Table 1. Harvest Methods and Descriptions Use the most detailed prescription that can be provided at the time of adding the stand.

Harvest Method	Description
Technique: Even-Aged	Harvest methods designed to regenerate a stand with a single age class.
Clearcut	Harvest where very few, if any, trees are left standing in the harvested area.
Clearcut-Artificial Regen	Same as above, with regeneration through artificial methods such as planting or seeding.

Clearcut-Natural Seeding	Same as above, with regeneration through natural seeding from reserved or adjacent trees.
Clearcut-Sprouting	Same as above, with regeneration through suckering or sprouting.
Clearcut-w/Reserves	Harvest where leave trees are left in clumps, strip, or islands that occupy a minimum of 5% of the clearcut harvest unit, or greater than 5 leave trees are left scattered throughout the site.
Clearcut-w/Rsrv-Adv Regen	Same as above, with regeneration primarily through advanced or established regeneration on the site.
Clearcut-w/Rsrv-Art Regen	Same as above, with regeneration through artificial methods such as planting or seeding.
Clearcut-w/Rsrv-Natural Seeding	Same as above, where regeneration will primarily result from natural seeding occurring from leave trees.
Clearcut-w/Rsrv-Sprouting	Same as above, with regeneration primarily from root suckers or stump sprouts.
Salvage-Clearcut	Harvesting essentially all trees from a stand after a windstorm, wildfire, insect and disease damage, or other environmental factors.
Salvage-Clearcut-Environment	Harvesting essentially all trees from a stand after other environmental damage.
Salvage-Clearcut-I & D	Harvesting essentially all trees from a stand after insect and disease damage.
Salvage-Clearcut-Wildfire	Harvesting essentially all trees from a stand after a wildfire.
Salvage-Clearcut-Windstorm	Harvesting essentially all trees from a stand after a windstorm.
Salvage-Clearcut w/Rsrv	Harvesting essentially all trees from a stand after a windstorm, wildfire, insect and disease damage, or other environmental factors.
Salvage-Clearcut w/Rsrv-Env	Harvest after other environmental factor damage where leave trees are left in clumps, strip, or islands that occupy a minimum of 5% of the clearcut harvest unit, or greater than 5 leave trees are left scattered throughout the site.
Salvage-Clearcut w/Rsrv-I&D	Harvest after insect and disease damage where leave trees are left in clumps, strip, or islands that occupy a minimum of 5% of the clearcut harvest unit, or greater than 5 leave trees are left scattered throughout the site.
Salvage-Clearcut w/Rsrv-Fire	Harvest after wildfire damage where leave trees are left in clumps, strip, or islands that occupy a minimum of 5% of the clearcut harvest unit, or greater than 5 leave trees are left scattered throughout the site.
Salvage- Clearcut w/Rsrv-Wind	Harvest after wind damage where leave trees are left in clumps, strip, or islands that occupy a minimum of 5% of the clearcut harvest unit, or greater than 5 leave trees are left scattered throughout the site.
Sanitation-Clearcut	Harvest of essentially all trees from a stand to stop or reduce actual or anticipated spread of insects or disease.
Sanitation-Clearcut w/Rsrv	Harvest to stop or reduce actual or anticipated spread of insects or disease where leave trees are left in clumps, strip, or islands that occupy a minimum of 5% of the clearcut harvest unit, or greater than 5 leave trees are left scattered throughout the site.
Seed Tree	Harvesting of most trees, but scattered trees or clumps are retained for seed production to regenerate the harvested site.
Seed Tree-Interim Cut	The initial harvest(s) from which seed trees are left standing.
Table 1. Harvest Methods and Descriptions (continued)	
Seed Tree-w/Rsrv	Harvesting of most trees, but scattered trees or clumps are retained for seed production to regenerate the harvested site where leave trees are left in clumps, strip, or islands that occupy a minimum of 5% of the clearcut harvest unit, or greater than 5 leave trees are left scattered throughout the site.
Seed Tree-w/Rsrv-Final Hv	Same as Seed Tree-Final Harvest, but reserve trees are left standing after final harvest.

Seed Tree-w/Rsrv-Intrm Cut	Same as Seed Tree-Interim Cut, but reserve trees will be left standing after the interim and final harvest.
Shelterwood	Harvesting of most trees but leaving enough to provide sufficient shade to provide a moderated environment for the desired species to regenerate from seed and grow in the understory.
Shelterwood-Final Harvest	Final harvest of most or all of the shelter trees to release the established regenerating trees.
Shelterwood-Interim Cut	The harvest(s) prior to final removal of the original overstory trees.
Shelterwood-w/Rsrv	Same as Shelterwood, but leave trees are left in clumps, strip, or islands that occupy a minimum of 5% of the clearcut harvest unit, or greater than 5 leave trees are left scattered throughout the site.
Shelterwood-w/Rsrv-Final Hv	Same as above, but leave trees are retained after the final shelterwood harvest.
Shelterwood-w/Rsrv-Intrm Cut	Same as above, but leave trees are retained after the interim shelterwood harvests.
Technique: Two-Aged	Harvest methods designed to maintain and regenerate a stand with two age classes.
Clearcut-w/Rsrv	Clearcut harvest with reserves designed to maintain and regenerate a stand with two age classes.
Clearcut-w/Rsrv-Adv Regen	Same as above, with regeneration primarily through advanced or established regeneration on the site.
Clearcut-w/Rsrv-Art Regen	Same as above, with regeneration through artificial methods such as planting or seeding.
Clearcut-w/Rsrv-Nat Seeding	Same as above, where regeneration will primarily result from natural seeding occurring from leave trees.
Clearcut-w/Rsrv-Sprouting	Same as above, with regeneration primarily from root suckers or stump sprouts.
Seed Tree-w/Rsrv	A seed tree harvest in which some or all of the seed trees are retained after regeneration has been established to attain goals other than regeneration.
Seed Tree-w/Rsrv-Final Hv	Same as Seed Tree-Final Harvest, but leave trees are left standing after final harvest.
Seed Tree-w/Rsrv-Intrm Cut	Same as Seed Tree-Interim Cut, but leave trees will be left standing after the interim and final harvest.
Shelterwood-w/Rsrv	Some or all of the shelter trees are retained well beyond the normal period of retention to attain goals other than regeneration.
Shelterwood-w/Rsrv-Final Hv	Same as above, but leave trees are left standing after the final harvest.
Shelterwood-w/Rsrv-Intrm Cut	Same as above, but leave trees are left standing after the interim shelterwood harvests.
Technique: Uneven-aged	Harvest methods designed to maintain an uneven-aged stand of trees with three or more distinct age classes, either mixed throughout or in small groups.
Group Selection	Small groups of trees are harvested from the stand to create new age classes in small groups in uneven-aged managed stands.
Group Selection-Salvage	Salvage harvest in a stand where small groups of trees are harvested because of windstorm, wildfire, or insects, disease, or animal damage and an uneven-aged stand structure is to be maintained.
Group Selection-w/Rsrv	A variant of a group selection system in which some trees within the group are not cut to attain goals other than regeneration within the group. The remaining stand should include a minimum of 6 cavity trees, potential cavity trees and/or snags per acres.
Single Tree Selection	Individual trees of all size classes are harvested more or less uniformly throughout the stand to create a new age-class in the stand.
Table1. Harvest Methods and Descriptions (continued)	
Technique: Commercial Thin	Harvest to reduce stand density of trees primarily to improve growth, quality, vigor, or composition of the stand while generating revenue from the sale of the wood products.
Commercial Thinning	Thinning harvest that will generate revenue from sale of wood products. Method, i.e., row, strip or selective thinning, not specified.

Row Thinning	Harvest of selected rows of a plantation.
Strip Thinning	Harvest of strips in a natural stand.
Selective Thinning	Harvest of selected trees (often marked) from a stand.
Salvage Cut-Selective Harvest	Selective harvest of dead, dying, or damaged trees due to injurious agents other than competition.
Sanitation Cut-Selective Harvest	Selective harvest of trees to improve stand health by stopping or reducing actual or anticipated spread of insects or disease.
Technique: Decorative Trees	
Decorative Trees	Decorative tree (e.g., Christmas tree) harvest. Small trees or treetops.
Boughs	Bough harvest.

Table 2. Reasons for Annual Plan Additions – Select the primary (one) reason for adding the stand. High risk refers to stands needing immediate treatment due to a high level of insect, disease, animal, or environmental damage, or for controlling the spread of insects or disease.

Reason	Description/Example
Insects	
Bark Beetles	Bark beetle control or salvage of dead or dying trees caused by beetles.
Spruce Budworm	Heavy defoliation or mortality caused by spruce budworms.
Jack Pine Budworm	Heavy defoliation or mortality caused by jack pine budworms.
Defoliators	Other defoliators making the stand high risk for significant damage or mortality.
Other Insects	Other insect damage that makes the stand high risk for significant loss. <i>Identify insect, e.g., two-lined chestnut borer, in Reason column.</i>
Diseases	
WP Blister Rust	Salvage of white pine blister rust infected trees.
Oak Mortality	Oak wilt or other oak mortality from disease.
Dwarf Mistletoe	Dwarf mistletoe disease control.
Hypoxylon Canker	Hypoxylon canker damage making the stand high risk.
Aspen Decay	Phellinus or white trunk rot damage making the stand high risk.
Hypoxylon & Decay	Combination of two above.
Heart Rot	Heart rot damage making the stand high risk.
Birch Decline	High risk due to birch decline.
Hardwood Cankers	Canker damage making the stand high risk.
Other Diseases	Other diseases making the stand high risk for loss or spread of disease. <i>Identify disease in Reason column.</i>

Table 2. Reasons for Annual Plan Additions (continued)

Animals	
Beaver	Flooding caused by beaver or beaver damaged trees.
Porcupine	Salvage of trees due to heavy porcupine damage.

Environment	
Windthrow	Trees tipped over with roots still attached.
Drought	Salvage of trees damaged by drought.
Stem Breakage	Trees broken off with roots still in the ground caused by wind, snow, or ice.
Fire	Salvage of trees damaged by wildfire.
Flooding	Flooding damage, other than that caused by beaver dams.
Exposure	High risk of windthrow or stem breakage because of exposure caused by other adjacent harvest activities.
Inventory	
Boundary	Stand boundary was not correct in the forest inventory
Mistyped	Stand was classified incorrectly in the forest inventory and should be harvested now.
Inclusion	Small patch or clump of trees located in a larger stand that is different than the cover type that should be harvested in conjunction with other harvest in the area.
Location	
Adjacent	Timber near or adjacent to a stand on the annual plan or other ownership harvest area that should be harvested now.
Access	Limited or difficult access to a stand in need of harvest and other harvest is occurring in the area now, e.g., a winter road is open to a remote area. Avoid repeat entry in near future.
Cooperation	Cooperating with adjacent landowner (federal, county, tribal, or private) to harvest an area to meet forest management objectives across ownerships.
Other	
Advanced Decline	Multiple reasons such as disease, insects, rot, dead tops, windthrow, and breakage in old stands. Stand is in very poor condition.
Density	Over-stocked stand that needs thinning to reduce stand density to enhance growth, quality, vigor, and composition of the stand.
Seed Crop	Timing of shelterwood or seed tree harvest in conjunction with a good seed crop.
Wildlife Habitat	Request or agreement from wildlife staff to harvest a stand for wildlife habitat management.
Ecological	Harvest/removal of non-native tree species or for other ecological reasons.
Market	New or increased demand for a species where markets were limited in the past and the allowable harvest in the plan has not been sold in previous years.
Substitution	Substituting a stand in more need of harvest than the one on the current annual plan or for other reasons.
Research	Harvest requested as part of a research project.
Other	Include explanation at the bottom of the annual plan addition table.

Annual Plan Additions Reasons - FY2005

Reason for Annual Plan Addition	Acres
Access (3 stands)	42
Access/Cooperation (1 stands)	12
Adjacent (81 stands)	984
Adjacent and Beaver (2 stands)	14
Adjacent and Density (1 stands)	27
Adjacent, remainder of a stand on FY05 plan (2 stands)	129
Adjacent/Access (3 stands)	32
Adjacent/Advanced Decline (1 stands)	7
Adjacent/Disease (1 stands)	18
Adjacent/Exposure (2 stands)	8
Adjacent/Mistyped (9 stands)	143
Adjacent/Windthrow/Bark Beetles (2 stands)	46
Adjoining/Access (1 stands)	9
Advance Decline and Adjacent (1 stands)	10
Advanced Decline (37 stands)	410
Advanced decline - JP (1 stands)	11
Advanced decline/Access (1 stands)	7
Advanced decline/Adjacent (1 stands)	10
Aspen Decay (1 stands)	6
Bark Beetles (49 stands)	1777
Beaver (1 stands)	7
Beaver, Flooding, and Adjacent (2 stands)	14
Boundary (19 stands)	172
Boundary/Access (1 stands)	10
Carlos Edge Fire Salvage (4 stands)	33
Cooperation (3 stands)	39
Density (16 stands)	200
Density/Disease (1 stands)	9
Density/Market (1 stands)	21
Disease (2 stands)	55
Disease – Oak Wilt (6 stands)	172
Dutch Elm Disease (2 stands)	10
Dwarf Mistletoe (8 stands)	114
Flooded (4 stands)	27
FY2006 Plan (3 stands)	74
Harvest dead and dying red and white pine (2 stands)	15
Hypoxylon & Decay (3 stands)	50
Inclusion (2 stands)	14
Insects/Disease (2 stands)	19
Inventory (1 stands)	9
Jack pine budworm (22 stands)	686
Market (46 stands)	798
Market and Other (13 stands)	208
Market/Other Diseases (1 stands)	30
Mistyped (56 stands)	527
Mistyped and Adjacent (1 stands)	6
Mistyped/Adjacent (1 stands)	7
Mistyped/Market (2 stands)	38
MNDOT ROW Sale (1 stands)	5
New highway right-of-way (3 stands)	5
On-Site visit (6 stands)	103
Other (22 stands)	329

Reason for Annual Plan Addition (cont.)	Acres
Other Insects – Two lined chestnut borer (2 stands)	33
Other* (1 stands)	50
Porcupine (1 stands)	5
Research (1 stands)	10
Salvage (1 stands)	19
Seed Crop (3 stands)	14
Spruce Budworm (1 stands)	6
Stem Breakage (6 stands)	41
Substitution (25 stands)	434
Substitution/Adjacent (47 stands)	527
Two-Lined Chestnut Borer (5 stands)	74
Wildlife (2 stands)	20
Wildlife Habitat (2 stands)	73
Windthrow (87 stands)	1373
Windthrow and Dutch Elm Disease (1 stands)	5
Windthrow/Adjacent (2 stands)	20
Windthrow/Bark Beetles (1 stands)	13
Windthrow/Firewood clean-up on WMA (1 stands)	3
Windthrow/Mistyped (1 stands)	7
Windthrow/Stem Breakage (5 stands)	64
Fiscal Year Total Acres:	10299

2006 Timber Sales Calendar

Notices of Sale become available approximately 30 days before the date of each sale, and can be viewed by clicking on an active link for an upcoming sale in the Sale Name column below.

Results of timber auction sales showing which tracts were sold, their bid (selling) price and who purchased them are posted approximately 5 days after the sale and remain available for ninety days following the date of sale. Click on an active link in the Sale Name column below to display the detailed results for sales held within the last ninety days.

DATE	SALE #	AUCTION TYPE *	SALE NAME	TIME	LOCATION
Jan 17	1	Regular	Winona, Houston and Fillmore Counties Regular Auction	10:00 AM	Rushford Fire Hall
Feb 07	1	Regular	Backus Area Regular Auction	10:00 A.M.	Pequot Lakes City Hall
Feb 07	2	Intermediate	Backus Area Intermediate Auction	10:30 A.M.	Pequot Lakes City Hall
Feb 08	1	Intermediate	Bemidji Area Intermediate Auction	9:30 AM	Bemidji Area DNR Forestry Office
Feb 08	2	Regular	Sandstone Area Regular Auction	10:00 AM	Rutledge Comm. Center
Feb 08	3	Intermediate	Sandstone Area Intermediate Auction	11:00 AM	Rutledge Comm. Center
Feb 15	1	Regular	Cambridge Area Regular Auction	9:00 AM	Cambridge Area DNR Forestry Office
Mar 23	1	Regular	Houston and Fillmore Counties Regular Auction	10:00 AM	Rushford Fire Hall
Mar 31	1	Regular	Goodhue/Wabasha/Winona Counties Regular Auction	10:00 AM	Lake City Area DNR Forestry Office
May 05	1	Regular	Houston and Fillmore Counties Regular Auction	10:00 AM	Rushford Fire Hall
May 15	1	Regular	Aitkin Area Regular Auction	8:00 AM	Long Lake Conservation Center, Palisade, MN
May 15	2	Intermediate	Aitkin Area Intermediate Auction	9:00 AM	Long Lake Conservation Center, Palisade, MN
May 16	1	Intermediate	Park Rapids/Detroit Lakes	3:00 PM	Park Rapids

			Area Intermediate Auction		Env. Ed. Building
May 16	2	Regular	Park Rapids Area Regular Auction	3:30 PM	Park Rapids Env. Ed. Building
May 26	1	Regular	Hibbing Area Regular Auction	9:30 AM	Ironworld, Chisholm, MN
May 26	2	Intermediate	Hibbing Area Intermediate Auction	10:15 AM	Ironworld, Chisholm, MN
May 31	1	Regular	Bemidji Area Regular Auction	9:00 AM	Bagley DNR Field Station
May 31	2	Intermediate	Bemidji Area Intermediate Auction	9:30 AM	Bagley DNR Field Station
Jun 01	1	Intermediate	Littlefork Area Intermediate Auction	9:30 AM	Big Falls Community Building
Jun 01	2	Regular	Littlefork Area Regular Auction	10:30 AM	Big Falls Community Building
Jun 02	1	Regular	Backus Area Regular Auction	10:00 A.M.	Pequot Lakes City Hall
Jun 02	2	Intermediate	Backus Area Intermediate Auction	10:30 A.M.	Pequot Lakes City Hall
Jun 06	1	Regular	Baudette Area Regular Auction	9:00 AM	Baudette Area DNR Forestry Office
Jun 06	2	Intermediate	Baudette Area Intermediate Auction	9:30 AM	Baudette Area DNR Forestry Office
Jun 06	3	Regular	Deer River/Effie Area Regular Auction	9:30 AM	Big Fork Community Building
Jun 06	4	Intermediate	Deer River/Effie Area Intermediate Auction	10:30 AM	Big Fork Community Building
Jun 07	1	Regular	Orr and Tower Area Regular Auction	9:30 A.M.	Orr American Legion
Jun 07	2	Intermediate	Orr and Tower Area Intermediate Auction	10:00 A.M.	Orr American Legion
Jun 08	1	Regular	Warroad/Wannaska Area Intermediate Auction	9:30 AM	Warroad Area DNR Forestry Office
Jun 08	2	Intermediate	Warroad/Wannaska Area	10:00 AM	Warroad Area

			Intermediate Auction		DNR Forestry Office
Jun 08	3	Regular	Cloquet Area Regular Auction	9:00 AM	Cloquet Area DNR Forestry Office
Jun 08	4	Intermediate	Cloquet Area Intermediate Auction	9:30 AM	Cloquet Area DNR Forestry Office
Jun 13	1	Regular	Two Harbors Area Regular Auction	10:00 AM	Silver Bay City Hall
Jun 13	2	Intermediate	Two Harbors Area Intermediate Auction	11:00 AM	Silver Bay City Hall
Jun 14	1	Regular	Blackduck Area Regular Auction	9:00 AM	Blackduck Senior Center
Jun 14	2	Intermediate	Blackduck Area Intermediate Auction	9:45 AM	Blackduck Senior Center
Jun 14	3	Regular	Sandstone Area Regular Auction	10:00 AM	Rutledge Community Center
Jun 14	4	Intermediate	Sandstone Area Intermediate Auction	11:00 AM	Rutledge Community Center
Sep 07	1	Regular	Camp Ripley - Little Falls Area Regular Auction	9:00 AM	Range Control Building
Sep 21	1	Regular	Little Falls Area Regular Auction	10:00 AM	Onamia Forestry Office
Sep 21	2	Intermediate	Little Falls Area Intermediate Auction	11:00 AM	Onamia Forestry Office
Nov 28	1	Regular	Cambridge Area Regular Auction	9:00 AM	Cambridge Area DNR Office
Dec 13	1	Regular	Blackduck Area Regular Auction	9:00 AM	Blackduck Senior Center
Dec 13	2	Intermediate	Blackduck Area Intermediate Auction	9:45 AM	Blackduck Senior Center

* There are two auction types:

- **Regular** auctions vary in the number of cords offered, last up to 5 years in length, and are open to all purchasers.
- **Intermediate** auctions offer up to 3,000 cords per tract, last up to 5 years in length, and are open only to individuals and to firms with 20 or fewer employees. These are small business set-aside sales.

List of Stands with a White Pine Component

FY2005 Harvest Plan

Area Name	Sec	Stand	Twp	Rge	Stand ID	Cover Type	Preliminary Stand Prescription	Acres
		No.						
Aitkin	16	3	45	26	11603045269	Birch	Even-Aged Regeneration Harvest	53
Aitkin	9	14	45	26	10914045269	White Pine	Intermediate Treatment	6
Aitkin	21	15	50	23	12115050239	Northern Hardwoods	Intermediate Treatment	33
Aitkin	21	22	50	23	12122050239	Northern Hardwoods	Intermediate Treatment	12
Aitkin	6	12	50	26	10612050269	Northern Hardwoods	Intermediate Treatment	24
Aitkin	10	22	51	26	11022051269	Balsam Fir	Even-Aged Regeneration Harvest	19
Aitkin	18	10	52	22	11810052229	Tamarack	Even-Aged Regeneration Harvest	8
Aitkin	6	2	52	22	10602052229	Aspen	Even-Aged Regeneration Harvest	8
Aitkin	18	34	52	24	11834052249	Aspen	Even-Aged Regeneration Harvest	55
Aitkin	18	6	52	24	11806052249	Jack Pine	Even-Aged Regeneration Harvest	3
Aitkin	19	22	52	24	11922052249	Jack Pine	Even-Aged Regeneration Harvest	32
Aitkin	19	5	52	24	11905052249	Jack Pine	Even-Aged Regeneration Harvest	4
Aitkin	19	9	52	24	11909052249	Jack Pine	Even-Aged Regeneration Harvest	2
Aitkin	12	51	52	25	11251052259	White Spruce	Intermediate Treatment	9
Aitkin	13	23	52	25	11323052259	Jack Pine	Even-Aged Regeneration Harvest	9
Aitkin	2	28	52	25	10228052259	Northern Hardwoods	Intermediate Treatment	12
Backus	36	15	139	28	13615139289	White Pine	Sanitation Cut - Selective Harvest	13
Backus	36	18	139	28	13618139289	White Pine	Sanitation Cut - Selective Harvest	20
Backus	36	4	139	28	13604139289	White Pine	Sanitation Cut - Selective Harvest	62
Backus	28	2	139	31	12802139319	Aspen	Clearcut with Reserves - Sprouting	40
Backus	16	3	140	30	11603140309	Aspen	Clearcut with Reserves - Sprouting	14
Bagley	20	2	143	37	12002143379	Jack Pine	Clearcut with Reserves	19
Bagley	10	6	143	39	11006143399	Aspen	Clearcut with Reserves	5
Bagley	4	5	143	39	10405143399	Aspen	Clearcut with Reserves	16
Bagley	9	10	143	39	10910143399	Aspen	Clearcut with Reserves	5
Bagley	1	19	143	40	10119143409	Norway Pine	Commercial Thinning	4
Bagley	2	9	143	40	10209143409	Tamarack	Re-Inventory	5
Bagley	24	21	145	39	12421145399	Aspen	Clearcut with Reserves	5
Bagley	8	1	147	39	10801147399	Aspen	Clearcut with Reserves	2
Baudette	14	18	157	33	11418157339	Jack Pine	Commercial Thinning	8
Baudette	23	14	157	33	12314157339	Jack Pine	Commercial Thinning	10
Bemidji	26	8	144	30	12608144309	Birch	Uneven-Aged Regeneration Harvest	32
Bemidji	18	7	145	31	11807145319	Birch	On-site Stand Evaluation	3
Bemidji	6	3	146	30	10603146309	Aspen	Re-Inventory	7
Bemidji	10	5	146	31	11005146319	Norway Pine	Shelterwood	4
Bemidji	10	7	146	31	11007146319	Black Spruce, Lowland	Clearcut with Reserves	4
Bemidji	4	1	147	31	10401147319	Tamarack	Clearcut with Reserves	16
Bemidji	10	10	148	33	11010148339	Aspen	Clearcut with Reserves	10
Bemidji	11	24	148	33	11124148339	Aspen	Clearcut with Reserves	14
Blackduck	27	4	147	29	12704147299	Aspen	Clearcut with Reserves	4
Blackduck	18	5	148	31	11805148319	Balsam Fir	On-site Stand Evaluation	14
							Stand	

<u>Area Name</u>	<u>Sec</u>	<u>No.</u>	<u>Twp</u>	<u>Rge</u>	<u>Stand ID</u>	<u>Cover Type</u>	<u>Preliminary Stand Prescription</u>	<u>Acres</u>
Blackduck	32	13	148	31	13213148319	Birch	Clearcut with Reserves	15
Blackduck	32	19	148	31	13219148319	Aspen	Clearcut with Reserves	22
Blackduck	30	6	153	28	13006153289	Balsam Fir	On-site Evaluation - High Risk or Low Volume	17
Brainerd	2	6	136	27	10206136279	Jack Pine	On-site Stand Evaluation	5
Brainerd	29	1	137	25	12901137259	Aspen	On-site Stand Evaluation	27
Brainerd	16	3	138	26	11603138269	White Pine	On-site Stand Evaluation	4
Brainerd	36	17	138	26	13617138269	Norway Pine	On-site Stand Evaluation	20
Brainerd	36	19	138	26	13619138269	Norway Pine	On-site Stand Evaluation	29
Brainerd	9	3	138	26	10903138269	Birch	On-site Stand Evaluation	7
Cambridge	6	25	32	22	10625032229	Norway Pine	Intermediate Treatment	3
Cambridge	14	12	33	22	11412033229	White Pine	Intermediate Treatment	10
Cambridge	14	6	33	22	11406033229	White Pine	Intermediate Treatment	47
Cambridge	31	6	34	21	13106034219	White Pine	Intermediate Treatment	4
Cambridge	35	4	34	21	13504034219	Norway Pine	Intermediate Treatment	5
Cambridge	15	1	34	27	11501034279	White Pine	Intermediate Treatment	7
Cambridge	16	18	34	27	11618034279	Norway Pine	Intermediate Treatment	4
Cambridge	16	30	34	27	11630034279	White Pine	Intermediate Treatment	3
Cambridge	16	32	34	27	11632034279	Norway Pine	Intermediate Treatment	2
Cambridge	16	44	34	27	11644034279	Norway Pine	Intermediate Treatment	24
Cambridge	17	8	34	27	11708034279	White Pine	Intermediate Treatment	5
Cambridge	20	3	34	27	12003034279	Norway Pine	Intermediate Treatment	28
Cambridge	21	7	34	27	12107034279	Norway Pine	Intermediate Treatment	28
Cambridge	28	5	34	27	12805034279	Norway Pine	Intermediate Treatment	18
Cambridge	29	12	34	27	12912034279	Norway Pine	Even-Aged Regeneration Harvest	12
Cambridge	35	3	34	27	13503034279	Norway Pine	Intermediate Treatment	30
Cambridge	36	28	34	27	13628034279	Norway Pine	Intermediate Treatment	4
Cambridge	36	8	34	27	13608034279	White Pine	Intermediate Treatment	4
Cloquet	31	23	49	16	13123049169	Aspen	On-site Evaluation - High Risk or Low Volume	6
Cloquet	32	6	49	16	13206049169	Aspen	On-site Evaluation - High Risk or Low Volume	10
Cloquet	36	1	49	17	13601049179	Aspen	On-site Stand Evaluation	15
Cloquet	13	1	49	19	11301049199	Aspen	Clearcut with Reserves	5
Cloquet	31	3	52	18	13103052189	Birch	Clearcut with Reserves	18
Cloquet	34	3	53	15	13403053159	Aspen	On-site Evaluation - High Risk or Low Volume	11
Cloquet	36	8	53	16	13608053169	Aspen	Clearcut with Reserves	24
Cloquet	36	9	53	16	13609053169	Balsam Fir	On-site Evaluation - High Risk or Low Volume	16
Cloquet	6	6	53	17	10606053179	Balsam Fir	Clearcut with Reserves	6
Cloquet	16	14	54	17	11614054179	White Spruce	Clearcut with Reserves	6
Cloquet	16	24	55	14	11624055149	Norway Pine	Commercial Thinning	9
Cloquet	22	16	55	14	12216055149	Norway Pine	Commercial Thinning	27
Cloquet	22	18	55	14	12218055149	Norway Pine	Commercial Thinning	11
Deer River	6	6	142	25	10606142259	Aspen	Clearcut with Reserves	30
Deer River	36	7	142	26	13607142269	Jack Pine	Clearcut with Reserves	13
Deer River	21	1	145	26	12101145269	Birch	On-site Stand Evaluation	5
Deer River	21	5	145	26	12105145269	Birch	On-site Stand Evaluation	11
Deer River	27	10	147	25	12710147259	Tamarack	On-site Evaluation - High Risk or Low Volume	41

<u>Area Name</u>	<u>Sec</u>	<u>Stand</u>	<u>Twp</u>	<u>Rge</u>	<u>Stand ID</u>	<u>Cover Type</u>	<u>Preliminary Stand Prescription</u>	<u>Acres</u>
		<u>No.</u>						
Deer River	27	14	147	25	12714147259	Birch	Clearcut with Reserves	9
Deer River	16	14	53	22	11614053229	White Pine	On-site Stand Evaluation	3
Deer River	24	43	53	23	12443053239	Balsam Fir	Clearcut with Reserves	2
Deer River	18	1	54	24	11801054249	Norway Pine	Commercial Thinning	7
Deer River	18	18	54	24	11818054249	Norway Pine	Commercial Thinning	3
Deer River	18	20	54	24	11820054249	Aspen	Clearcut with Reserves	5
Deer River	18	22	54	24	11822054249	White Pine	On-site Stand Evaluation	4
Deer River	18	4	54	24	11804054249	Norway Pine	Commercial Thinning	56
Deer River	18	6	54	24	11806054249	Aspen	Clearcut with Reserves	9
Deer River	36	10	55	23	13610055239	Birch	On-site Stand Evaluation	41
Deer River	21	2	55	24	12102055249	Birch	On-site Stand Evaluation	10
Deer River	36	10	56	24	13610056249	Norway Pine	Commercial Thinning	18
Deer River	36	21	56	24	13621056249	Aspen	Clearcut with Reserves	18
Deer River	16	11	58	26	11611058269	Norway Pine	Commercial Thinning	9
Deer River	36	3	58	26	13603058269	Birch	On-site Stand Evaluation	22
Deer River	36	5	58	26	13605058269	Birch	On-site Stand Evaluation	4
Deer River	30	1	59	24	13001059249	Birch	On-site Stand Evaluation	5
Deer River	2	3	59	25	10203059259	Black Spruce, Lowland	On-site Stand Evaluation	22
Deer River	29	8	59	25	12908059259	Birch	On-site Stand Evaluation	6
Deer River	22	16	59	27	12216059279	Balsam Fir	On-site Stand Evaluation	18
Deer River	26	8	59	27	12608059279	Balsam Fir	Clearcut with Reserves	8
Detroit Lakes	25	1	142	38	12501142389	Norway Pine	Selective Thinning - Commercial	10
Effie	8	18	149	25	10818149259	Norway Pine	Commercial Thinning	5
Effie	9	15	152	25	10915152259	Balsam Fir	Clearcut with Reserves	20
Hibbing	13	6	58	20	11306058209	Lowland Brush	Clearcut with Reserves - Sprouting	1
Hibbing	1	1	58	21	10101058219	Jack Pine	Clearcut with Reserves - Artificial	3
Hibbing	11	10	59	21	11110059219	Aspen	Clearcut with Reserves - Sprouting	10
Hibbing	17	13	59	22	11713059229	Aspen	Clearcut with Reserves - Sprouting	16
Hibbing	30	1	59	23	13001059239	Jack Pine	Shelterwood with Reserves	5
Hibbing	30	2	59	23	13002059239	Norway Pine	Commercial Thinning	4
Hibbing	30	3	59	23	13003059239	Norway Pine	Shelterwood with Reserves	24
Hibbing	10	10	60	21	11010060219	Norway Pine	Commercial Thinning	12
Hibbing	9	17	60	21	10917060219	Norway Pine	Commercial Thinning	18
Hibbing	11	5	60	22	11105060229	Norway Pine	Commercial Thinning	10
Hibbing	2	43	60	22	10243060229	Norway Pine	Commercial Thinning	2
Hibbing	2	7	60	22	10207060229	Norway Pine	Commercial Thinning	25
Hibbing	2	8	60	22	10208060229	Norway Pine	Commercial Thinning	15
Hibbing	21	7	60	23	12107060239	Norway Pine	Commercial Thinning	18
Hibbing	3	1	60	23	10301060239	Norway Pine	Commercial Thinning	5
Hibbing	16	17	61	21	11617061219	Norway Pine	Commercial Thinning	6
Hibbing	26	1	61	22	12601061229	Norway Pine	Commercial Thinning	11
Hibbing	1	20	61	23	10120061239	Norway Pine	Commercial Thinning	5
Hibbing	1	27	61	23	10127061239	Norway Pine	Commercial Thinning	13
Hibbing	1	28	61	23	10128061239	Aspen	Clearcut with Reserves - Sprouting	4

<u>Area Name</u>	<u>Sec</u>	<u>Stand</u>	<u>Twp</u>	<u>Rge</u>	<u>Stand ID</u>	<u>Cover Type</u>	<u>Preliminary Stand Prescription</u>	<u>Acres</u>
		<u>No.</u>						
Hibbing	1	29	61	23	10129061239	Aspen	Salvage with Reserves - Clearcut	8
Hibbing	1	33	61	23	10133061239	Birch	Clearcut - Sprouting	17
Hibbing	1	5	61	23	10105061239	Norway Pine	Commercial Thinning	4
Hibbing	10	8	61	23	11008061239	Aspen	Salvage with Reserves - Clearcut	3
Hibbing	10	9	61	23	11009061239	Aspen	Salvage with Reserves - Clearcut	8
Hibbing	11	1	61	23	11101061239	Aspen	Salvage with Reserves - Clearcut	10
Hibbing	2	1	61	23	10201061239	Norway Pine	Commercial Thinning	6
Hibbing	2	22	61	23	10222061239	Norway Pine	Commercial Thinning	7
Hibbing	2	23	61	23	10223061239	Norway Pine	Commercial Thinning	4
Hibbing	2	7	61	23	10207061239	Aspen	Salvage with Reserves - Clearcut	15
Hibbing	27	10	62	23	12710062239	Norway Pine	Commercial Thinning	10
Hibbing	34	3	62	23	13403062239	Norway Pine	Commercial Thinning	6
Hibbing	36	41	62	23	13641062239	Norway Pine	Commercial Thinning	17
Hibbing	8	2	62	23	10802062239	Norway Pine	Commercial Thinning	19
Hibbing	16	11	63	23	11611063239	Aspen	Clearcut with Reserves - Sprouting	21
Hibbing	16	2	63	23	11602063239	Aspen	Clearcut with Reserves - Sprouting	19
Lake City	24	10	112	14	12410112149	White Pine	Commercial Thinning	2
Lewiston	13	7	107	8	11307107089	White Pine	Commercial Thinning	3
Lewiston	13	8	107	8	11308107089	White Pine	Commercial Thinning	18
Lewiston	14	8	107	8	11408107089	White Pine	Commercial Thinning	4
Lewiston	14	9	107	8	11409107089	White Pine	Commercial Thinning	30
Little Falls	17	4	40	27	11704040279	Tamarack	Seed Tree	10
Littlefork	7	8	154	25	10708154259	Aspen	Clearcut with Reserves	10
Littlefork	26	7	155	28	12607155289	Aspen	Clearcut with Reserves	15
Littlefork	13	10	156	26	11310156269	Tamarack	Clearcut with Reserves	22
Littlefork	34	17	156	26	13417156269	Balsam Fir	Clearcut with Reserves	8
Littlefork	21	3	157	26	12103157269	Balsam Fir	Clearcut with Reserves	12
Littlefork	4	11	65	24	10411065249	Norway Pine	Commercial Thinning	8
Littlefork	4	21	65	24	10421065249	Norway Pine	Re-Inventory	4
Littlefork	17	13	67	23	11713067239	Aspen	On-site Evaluation - High Risk or Low Volume	6
Littlefork	26	2	67	23	12602067239	Balsam Fir	On-site Stand Evaluation	5
Littlefork	28	1	67	23	12801067239	Black Spruce, Lowland	Clearcut with Reserves	4
Littlefork	29	23	67	23	12923067239	Ash	Uneven-Aged Regeneration Harvest	6
Littlefork	29	28	67	23	12928067239	Black Spruce, Lowland	Clearcut with Reserves	15
Littlefork	36	14	71	23	13614071239	Aspen	Clearcut with Reserves	37
Orr	1	4	64	18	10104064189	Aspen	Clearcut with Reserves	4
Orr	25	1	64	19	12501064199	Aspen	On-site Evaluation - High Risk or Low Volume	25
Orr	10	17	64	21	11017064219	Balm of Gilead	Clearcut with Reserves - Sprouting	76
Orr	10	18	64	21	11018064219	Balm of Gilead	Clearcut with Reserves - Sprouting	7
Orr	36	12	65	17	13612065179	Norway Pine	Commercial Thinning	16
Orr	13	5	65	20	11305065209	Aspen	On-site Evaluation - High Risk or Low Volume	6
Orr	16	2	65	20	11602065209	Balsam Fir	On-site Evaluation - High Risk or Low Volume	39
Orr	29	4	66	17	12904066179	Norway Pine	Clearcut with Reserves	6
Orr	13	1	66	18	11301066189	Aspen	On-site Evaluation - High Risk or Low Volume	12

<u>Area Name</u>	<u>Sec</u>	<u>Stand</u>	<u>Twp</u>	<u>Rge</u>	<u>Stand ID</u>	<u>Cover Type</u>	<u>Preliminary Stand Prescription</u>	<u>Acres</u>
		<u>No.</u>						
Orr	18	1	66	18	11801066189	Norway Pine	Commercial Thinning	12
Orr	19	5	66	18	11905066189	Balsam Fir	On-site Evaluation - High Risk or Low Volume	8
Orr	21	1	66	18	12101066189	Aspen	Clearcut with Reserves	37
Orr	22	1	66	18	12201066189	Aspen	Clearcut with Reserves	8
Orr	4	3	66	18	10403066189	White Pine	Commercial Thinning	7
Orr	4	4	66	18	10404066189	Aspen	Clearcut with Reserves	11
Orr	4	16	66	19	10416066199	Aspen	Clearcut with Reserves	39
Orr	4	20	66	19	10420066199	Aspen	Clearcut with Reserves	30
Orr	33	10	66	20	13310066209	Aspen	Clearcut with Reserves	24
Orr	33	11	66	20	13311066209	White Pine	Commercial Thinning	3
Orr	33	12	66	20	13312066209	White Pine	Commercial Thinning	6
Orr	11	7	66	22	11107066229	Birch	On-site Evaluation - High Risk or Low Volume	16
Orr	12	2	66	22	11202066229	Aspen	Clearcut with Reserves	14
Orr	3	7	66	22	10307066229	Norway Pine	Clearcut with Reserves	3
Orr	5	1	67	18	10501067189	Aspen	Clearcut with Reserves	13
Orr	7	1	67	18	10701067189	Aspen	Clearcut with Reserves	9
Orr	16	1	67	22	11601067229	White Pine	Commercial Thinning	7
Orr	11	11	68	19	11111068199	Jack Pine	On-site Evaluation - High Risk or Low Volume	19
Orr	11	15	68	19	11115068199	Norway Pine	Commercial Thinning	5
Orr	11	5	68	19	11105068199	Jack Pine	Clearcut with Reserves	14
Orr	13	20	68	19	11320068199	Balsam Fir	On-site Evaluation - High Risk or Low Volume	6
Orr	13	23	68	19	11323068199	Balsam Fir	On-site Evaluation - High Risk or Low Volume	7
Orr	24	12	68	19	12412068199	Aspen	Clearcut with Reserves	25
Orr	24	13	68	19	12413068199	Aspen	Clearcut with Reserves	10
Orr	24	17	68	19	12417068199	Aspen	Clearcut with Reserves	29
Orr	24	21	68	19	12421068199	Birch	On-site Evaluation - High Risk or Low Volume	6
Orr	10	22	68	20	11022068209	Aspen	Clearcut with Reserves	31
Orr	11	1	68	20	11101068209	White Pine	Commercial Thinning	13
Orr	11	13	68	20	11113068209	Birch	On-site Evaluation - High Risk or Low Volume	18
Orr	11	14	68	20	11114068209	Balsam Fir	On-site Evaluation - High Risk or Low Volume	6
Orr	3	5	68	20	10305068209	White Pine	Commercial Thinning	11
Orr	3	9	68	20	10309068209	White Pine	Commercial Thinning	4
Orr	1	18	68	21	10118068219	Jack Pine	Clearcut with Reserves	7
Park Rapids	36	7	139	37	13607139379	Aspen	Clearcut with Reserves - Sprouting	12
Park Rapids	16	6	141	32	11606141329	Aspen	Clearcut with Reserves - Sprouting	26
Park Rapids	2	13	141	32	10213141329	Aspen	Clearcut with Reserves - Sprouting	10
Park Rapids	2	5	141	32	10205141329	Aspen	Clearcut with Reserves - Sprouting	10
Park Rapids	15	21	141	36	11521141369	Aspen	Clearcut with Reserves - Sprouting	20
Park Rapids	16	10	141	36	11610141369	Norway Pine	Commercial Thinning	44
Park Rapids	16	7	141	36	11607141369	Norway Pine	Commercial Thinning	44
Park Rapids	21	27	141	36	12127141369	Norway Pine	Commercial Thinning	7
Park Rapids	11	1	142	32	11101142329	Aspen	Clearcut with Reserves - Sprouting	22
Park Rapids	19	18	142	32	11918142329	Aspen	Clearcut with Reserves - Sprouting	22
Park Rapids	25	1	142	32	12501142329	Aspen	Clearcut with Reserves - Sprouting	29

<u>Area Name</u>	<u>Sec</u>	<u>Stand</u>	<u>Twp</u>	<u>Rge</u>	<u>Stand ID</u>	<u>Cover Type</u>	<u>Preliminary Stand Prescription</u>	<u>Acres</u>
		<u>No.</u>						
Park Rapids	25	11	142	32	12511142329	Aspen	Clearcut with Reserves - Sprouting	45
Park Rapids	26	24	142	32	12624142329	Aspen	Clearcut with Reserves - Sprouting	10
Park Rapids	26	5	142	32	12605142329	Aspen	Clearcut with Reserves - Sprouting	20
Park Rapids	33	10	142	32	13310142329	Aspen	Clearcut with Reserves - Sprouting	18
Park Rapids	33	15	142	32	13315142329	Aspen	Clearcut with Reserves - Sprouting	18
Park Rapids	35	11	142	32	13511142329	Aspen	Clearcut with Reserves - Sprouting	12
Park Rapids	35	28	142	32	13528142329	White Pine	Clearcut with Reserves - Sprouting	12
Rochester	20	1	105	13	12001105139	Northern Hardwoods	Uneven-Aged Regeneration Harvest	11
Rochester	20	2	105	13	12002105139	White Pine	Single Tree Selection	4
Sandstone	19	17	39	19	11917039199	Norway Pine	Commercial Thinning	21
Sandstone	19	35	39	19	11935039199	Norway Pine	Commercial Thinning	16
Sandstone	30	19	39	19	13019039199	Lowland Hardwoods	On-site Stand Evaluation	51
Sandstone	15	2	41	16	11502041169	Aspen	On-site Evaluation - High Risk or Low Volume	37
Sandstone	36	1	42	17	13601042179	Oak	Commercial Thinning	33
Sandstone	20	11	44	16	12011044169	Northern Hardwoods	Commercial Thinning	4
Sandstone	12	11	45	16	11211045169	Tamarack	Seed Tree	6
Sandstone	12	14	45	16	11214045169	Tamarack	Seed Tree	7
Sandstone	2	8	45	16	10208045169	Tamarack	Seed Tree	4
Tower	36	30	60	12	13630060129	Birch	On-site Evaluation - High Risk or Low Volume	21
Tower	16	17	61	11	11617061119	Aspen	Clearcut with Reserves	33
Tower	16	26	61	11	11626061119	Aspen	On-site Evaluation - High Risk or Low Volume	21
Tower	16	30	61	11	11630061119	Aspen	Clearcut with Reserves	29
Tower	36	14	61	11	13614061119	Aspen	Clearcut with Reserves	32
Tower	36	19	61	11	13619061119	Birch	On-site Evaluation - High Risk or Low Volume	6
Tower	24	20	61	17	12420061179	Norway Pine	Selective Thinning - Commercial	13
Tower	30	1	62	12	13001062129	Aspen	Clearcut with Reserves	8
Tower	19	2	62	13	11902062139	Balsam Fir	On-site Stand Evaluation	3
Tower	20	14	62	13	12014062139	Aspen	On-site Evaluation - High Risk or Low Volume	14
Tower	10	3	63	17	11003063179	Norway Pine	Commercial Thinning	46
Tower	10	4	63	17	11004063179	Norway Pine	Commercial Thinning	22
Tower	9	7	63	17	10907063179	Norway Pine	Commercial Thinning	14
Tower	2	15	63	18	10215063189	Jack Pine	Commercial Thinning	10
Tower	24	1	63	18	12401063189	White Pine	Uneven-Aged Regeneration Harvest	28
Tower	24	5	63	18	12405063189	Balsam Fir	On-site Stand Evaluation	40
Tower	12	4	63	19	11204063199	Aspen	On-site Evaluation - High Risk or Low Volume	10
Tower	13	6	63	20	11306063209	Birch	Clearcut with Reserves - Artificial	4
Tower	33	2	63	20	13302063209	Aspen	Clearcut with Reserves - Artificial	45
Two Harbors	16	23	53	12	11623053129	Birch	On-site Evaluation - High Risk or Low Volume	59
Two Harbors	16	8	53	12	11608053129	Aspen	Clearcut with Reserves	61
Two Harbors	19	1	53	12	11901053129	Birch	On-site Evaluation - High Risk or Low Volume	11
Two Harbors	19	2	53	12	11902053129	Birch	On-site Evaluation - High Risk or Low Volume	22
Two Harbors	16	1	54	11	11601054119	Northern Hardwoods	Uneven-Aged Regeneration Harvest	40
Two Harbors	16	2	54	11	11602054119	Northern Hardwoods	Uneven-Aged Regeneration Harvest	40
Two Harbors	17	5	62	1	11705062019	Aspen	Clearcut with Reserves	20

<u>Area Name</u>	<u>Sec</u>	<u>Stand No.</u>	<u>Twp</u>	<u>Rge</u>	<u>Stand ID</u>	<u>Cover Type</u>	<u>Preliminary Stand Prescription</u>	<u>Acres</u>
Two Harbors	16	11	62	2	11611062028	Aspen	Clearcut with Reserves	98
Two Harbors	17	2	62	4	11702062049	Balsam Fir	Clearcut with Reserves	13
Two Harbors	26	2	62	4	12602062049	Aspen	On-site Evaluation - High Risk or Low Volume	9
Two Harbors	26	5	62	4	12605062049	Birch	On-site Evaluation - High Risk or Low Volume	45
Two Harbors	26	6	62	4	12606062049	White Pine	Uneven-Aged Regeneration Harvest	10
Two Harbors	26	7	62	4	12607062049	Norway Pine	Commercial Thinning	4
Two Harbors	26	8	62	4	12608062049	Norway Pine	Commercial Thinning	8
Two Harbors	23	4	64	3	12304064038	Aspen	Clearcut with Reserves	16
Two Harbors	25	10	64	3	12510064038	Aspen	On-site Evaluation - High Risk or Low Volume	91
Two Harbors	28	16	64	4	12816064048	White Spruce	Clearcut with Reserves	24
Warroad	7	27	160	36	10727160369	Norway Pine	Selective Thinning - Commercial	13
Warroad	27	27	160	38	12727160389	Balm of Gilead	Clearcut with Reserves - Sprouting	41
Warroad	16	5	161	35	11605161359	Aspen	Clearcut with Reserves - Sprouting	76
Warroad	28	17	161	35	12817161359	Norway Pine	Selective Thinning - Commercial	17
Warroad	29	38	161	35	12938161359	Norway Pine	Selective Thinning - Commercial	16
Warroad	29	21	161	36	12921161369	Norway Pine	Selective Thinning - Commercial	11
Warroad	31	3	161	36	13103161369	Norway Pine	Selective Thinning - Commercial	7
Warroad	25	8	161	37	12508161379	Norway Pine	Selective Thinning - Commercial	4