



05 - 0516

FY 2005 Annual Report

Local Businesses Receive First Annual Project of the Year Awards

Staff Contact: Rhonda Wynia

closed cooperative, which will take soybeans to the next level of value. MnSP currently processes soybeans into



Minnesota Soybean Processors

soybean oil, soybean meal and soybean hulls. MnSP President Bruce Hill and MnSP Vice-President Ron Obermoller were in attendance to receive their award.

Inside this issue:

Southwest CERTS	2
JOBZ Update	2
RLF Update	2
MNRAAA	3
Senior Linkage Line	3
Staff Directory	5
Budget	7

FUMPA Biofuels and Minnesota Soybean Processors were the recipients of the first annual Project of the Year Awards given out at the SRDC's Annual Meeting on July 21st on the campus of Southwest Minnesota State University in Marshall.

from its rendering operation. In partnership with the Minnesota Prairie Line Railroad, FUMPA bio-diesel is the first bio-diesel to be used in a diesel locomotive in the United States. Chuck Neece, FUMPA Director of Marketing and Don Davis, FUMPA CEO were in attendance to receive their award.

FUMPA Biofuels, a division of Farmers Union Marketing and Processing Association, began operating its bio-diesel refinery at its Central Bi-Products rendering facility in Redwood Falls. The plant will produce 2.8 million gallons of fuel annually, using soybean oil initially and then progressing to other raw materials such as greases and animal fats

Farmers Union Marketing & Processing Association

Minnesota Soybean Processors, in the past year, began construction in Brewster of a refining plant that will produce 30 million gallons of bio-diesel per year. Start up is scheduled for August 1, 2005. MnSP is a farmer owned, new generation, value-added,

It is the Policy of the Minnesota Department of Transportation to provide an integrated system of freight transportation in Minnesota - highway, rail, water, air cargo, and intermodal terminals - that offers safe, reliable, and competitive access to statewide, national, and international markets.

Statewide Freight Plan Developed

Staff Contact: Annette Bair

SRDC Physical Development Director Annette Bair is a member of the Statewide Freight Plan Committee. The Committee was charged with developing a new Statewide Freight Plan for the Minnesota Department of Transportation.

Plan," which identifies three strategic directions, and by the Minnesota Statewide Transportation Plan, which includes ten policies to implement those strategic directions. The Minne-

sota Statewide Freight Plan adapts those strategic directions and policies to freight transportation, and defines performance measures specifically for freight within these directions and policies.



http://www.dot.state.mn.us/ofrw/statewide_plan.htm



Southwest CERTS Final Report Completed

Staff Contact: Annette Bair

The Southwest Clean Energy Resource Team met for the first time in January 2004. It is coordinated by the Rural Minnesota Energy Board, a joint powers board of 14 rural Minnesota counties committed to advancing renewable energy production in the region.

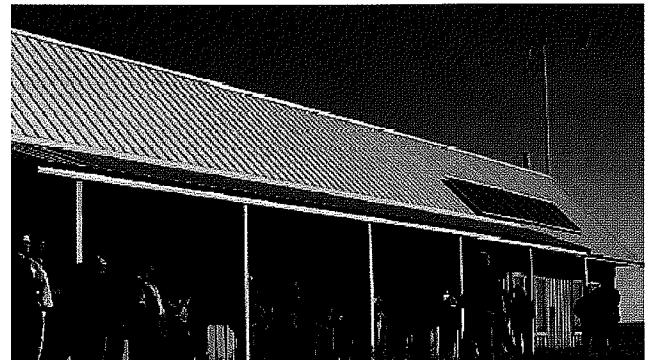
The group immediately identified two overall goals: the region will be a net exporter of energy and much of that energy production will be locally owned.

A careful resource assessment showed that the region is already a net exporter of electricity, all of it from wind energy, demonstrating that their goal could be achieved and

quickly built upon. The team will work toward three key objectives:

- Encourage energy reduction through energy efficiency and conservation measures

- Increase the use of biofuels within the region
- Encourage the development of locally-owned renewable energy projects



LCMR tour of Woodstock Wind Farm.



JOBZ Program Continues

Staff Contacts: Jay Trusty or Nan Larson

“Completed JOBZ deals have so far generated 466 new jobs, retained 240 jobs and spurred over \$15 million in capital investment.”

Begun in January of 2004, the JOBZ program continues to generate interest and facilitate development within the region. SRDC is the JOBZone Administrator for the Southwest JOBZone.

The Southwest JOBZone covers the counties of Lincoln, Lyon, Murray,

Pipestone, Redwood, Rock, Nobles, Kandiyohi, Meeker, McLeod, Renville, Sibley and portions of Jackson.

Completed JOBZ deals have so far generated 466 new jobs, retained 240 jobs and spurred over \$15 million in capital investment.

The Legislative Session just completed produced some changes in the JOBZ program which will affect small re-location projects. For more information on the JOBZ program and what it can do for your business contact the RDC or access the DEED web-site at : www.deed.state.mn.us/bizdev/jobz.htm

Revolving Loan Fund Summary

Staff Contact: Nan Larson

It has been an active year in FY 2005 for our RLF. Seven new loans were closed, (four more have been approved but not closed yet), making a total of 76 loans made since the loan pool's inception in 1994. Of the 76 loans, 42 are currently active and requiring service with a current outstanding balance of \$1,370,456.

The total dollar amount loaned out is \$4,437,089 with \$27,058,937 in other funds leveraged. The average loan size is \$58,382. The majority of the existing loans are for fixed asset financing. Retention and expansion of businesses have been the most utilized reason for

financing, with start-ups making up a much smaller portion of the portfolio.

In addition, 1,170 jobs have been created or retained by providing gap financing dollars to projects to make deals happen that may not otherwise have.

Twenty-Seven County Area Agency on Aging Formed

The Southwest Area Agency on Aging is no longer. We have now transitioned from 9 counties to a twenty-seven county Area Agency on Aging with Regions 6E, 6W and 9 and are called the Minnesota River Area Agency on Aging.

The Minnesota Board on Aging identified new Planning and Service Areas in 2004. The 4 regions developed an inter-agency agreement and a Joint Powers Board who created the Minnesota River Area Agency on Aging (MnRAAA). The four regions have a history of working together and met the requirements of an area agency on aging as specified by the Minnesota Board on Aging.

The Mankato office is the fiscal agent and will provide the administrative and grant management services for MnRAAA. The Slayton Office (Region Eight) became the

Staff Contact: Maddy Forsberg

government, clients and providers on Program Development Coordination and Call Center one-on-one assistance.

Joining 4 different programs into one is not easy; the transition had its rough patches. The end product is a well functioning area agency on aging. Staff will have more time to work in areas of development and helping local units of government, providers and clients. Efficiency is a priority. At the time of transition, the funding formula was also revised and resources were allocated to larger populated areas. We are adjusting by looking at funding priorities and targeting the Older American Act dollars.



27 County Call Center for the Senior Linkage Line®. Region Eight staff will also do Program Development and Coordination Activities. Regions 6E and 6W will also work with their local units of

"In the first full year of operation serving the twenty-seven county MNRAAA service area, the Call Center reported a total of 15,001 contacts."

First Year of Call Center a Success

Staff Contact: Robin Weis

In the first full year of operation serving the twenty-seven county MNRAAA service area, the Call Center reported a total of 15,001 contacts. Of these contacts, 14,472 were on the Senior Linkage Line®, 458 were walk ins, and 31 were via the mail. 9,565 of these contacts were unduplicated.

When this program was first being developed, it was believed that it would be accessed primarily by care givers, but this has not

proven to be the case, with 13,083 of the contacts having been made by the beneficiary.

Prescription drug assistance continues to be the area in which staff are fielding the most calls, with 8,666 calls concerning

Manufacturer Drug Programs and 3,508 concerning Medicare Approved Drug Discount Programs.

In the most recent call center customer survey 99% of the respondents

indicated that the information they received from the Senior Linkage Line® was clear and understandable.

The nine counties of region eight account for 24% of the senior population of the service area, but accounted for 48% of the contacts the first year. These numbers should change as seniors in the other regions come to know what our region's seniors already know, that the staff of the Senior Linkage Line® is friendly and knowledgeable and able to assist seniors with their questions and concerns.



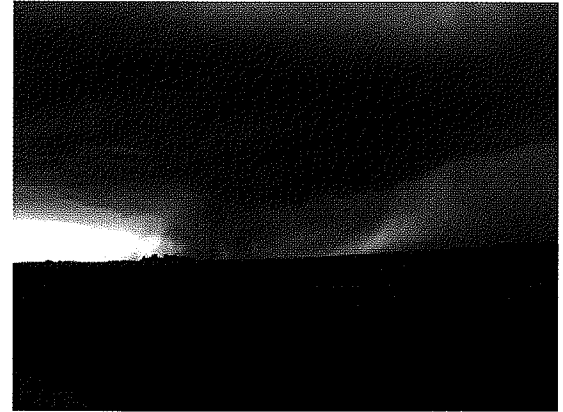


Three Counties Complete Hazard Mitigation Plans

Staff Contact: Kym Christiansen

During the 2005 fiscal year, there were three counties that completed draft plans. In late January, the FEMA reviewer notified staff that the plans had received approval pending formal adoption by the respective County Boards. Murray County adopted their plan on February 15th, 2005 with 26 cities and townships completing letters of support. The Redwood County Board adopted their plan on March 22, 2005 with 34 cities and townships returning letters of support. Nobles County adopted their plan on March 22, 2005 with 27 cities and townships

returning letters of support. Also in FY 2005, Rock and Jackson Counties began working on their All Hazard Mitigation Plans.



A tornado near Adrian, Minnesota

An application was also submitted to the Minnesota Department of Homeland Security on behalf of Pipestone County to receive funds to complete an All

Hazard Mitigation Plan. A regional risk assessment is also underway combining the information gathered in the plan process.

*"If you don't know
where you're going,
then it doesn't matter
which road you choose"
...the Mad Hatter to
Alice*

SRDC Welcomes New Planning Staff

Staff Contact: John Shepard

The SRDC welcomes John Shepard to the Regional Development Staff as a Development Planner. John is a member of the American Institute of Certified Planners (AICP), and has extensive land use and planning experience in North Dakota, Montana and Colorado.

John has been working on updating the Cottonwood County Comprehensive Plan which was originally prepared in 1970. Some specific issues that have come up during the planning process include:

- feedlot siting and setbacks

- Rural residential density limits
- Shoreland development
- RLUIPA
- Aggregate mining
- Variance process
- Controlling sprawl and the cost of public services

Sewer Projects Near Completion

Staff Contact: Kym Christiansen

The SRDC has been administering two Small Cities Development Program (SCDP) projects during the last fiscal year.

Carson Township, on behalf of the Delft Sanitary Sewer District in Cottonwood County was awarded \$120,000 to construct a pressure sewer system utilizing a sub-surface flow wetland for sewer

treatment. This project provided 26 residential and 5 non-residential connections serving 48 residents.

SRDC Staff also continued to administer



SCDP grant funds in Avoca and Iona. These two Murray County communities worked together to establish a joint sanitary sewer treatment system.

CURRENT SRDC STAFF MEMBERS

<u>Name</u>	<u>Title</u>	<u>Email</u>	<u>Extension</u>
Jay Trusty	Executive Director	execdir@swrdc.org	106
Nan Larson	Deputy Director	nanlarson@swrdc.org	108
Maddy Forsberg	Aging Program Director	swaaa@swrdc.org	201
Annette Bair	Physical Development Director	phydev@swrdc.org	101
Dianne Crowley	Finance Director	dcrowley@swrdc.org	104
Robin Weis	Program Development Specialist	srlinkage@swrdc.org	112
John Shepard	Development Planner	jshepard@swrdc.org	103
Kym Christiansen	Planning Generalist	kym@swrdc.org	107
Rhonda Wynia	Office Manager	rwnia@swrdc.org	114
Helen Brinks	Account Specialist	hbrinks@swrdc.org	116
Linda Tobias	Information & Referral Specialist II	lindat@swrdc.org	109
Gail Radke	Information & Referral Specialist II	gailr@swrdc.org	202
Kathy Schreiber	Administrative Assistant II	srdc@swrdc.org	110
Donna Clarke	Information & Referral Specialist I	donnac@swrdc.org	113
Julie Stewart	Information & Referral Specialist I	julies@swrdc.org	203
Leah Anderson	Information & Referral Specialist I	leaha@swrdc.org	257
Lori Sternborg	Administrative Assistant I	loris@swrdc.org	115

**SRDC Staff**

*Kneeling from left: John,
Nan, Kym, Lori, Robin
Standing from left: Rhonda,
Leah, Gail, Julie, Jay,
Kathy, Maddy, Helen,
Donna, Linda, Dianne,
Annette*

Mission Statement

"It is the mission of the Southwest Regional Development Commission to address the economic, social, physical, and governmental needs and opportunities of Southwestern Minnesota; while transcending traditional jurisdictional configurations. Further, to apply a regional perspective to problems, allowing for a coordinated effort by local units of government to address the needs of the region's citizenry and the activities of area agencies resulting in the sharing of a regional private and public resources while increasing the efficiency of government in general.

In addition, the Commission shall serve as the mechanism for initiating change in local, regional, State, and Federal policy, programs and regulations translating the region's concerns into a blueprint of action."

SOUTHWEST REGIONAL DEVELOPMENT COMMISSION

FISCAL YEAR 2005

Annual Report Basis

Revenues	FY2005 Budget	Closeout FY05 Estimation
Tax Levy	244,000	249,432
Board on Aging - Federal	87,459	82,031
Call Center - Federal	174,278	171,483
Call Center - State	105,952	105,952
Dept. of Human Serv.-Medicare	3,048	5,071
State Dept. - Commerce	22,710	22,710
Economic Dev. Adm.	54,628	54,628
Dept. of Public Safety	40,745	42,318
MN Dept. of Transportation	50,000	50,000
Eldercare Dev. Partnership	30,000	30,000
Contracts	211,658	219,334
Interest Earned & Miscellaneous	14,619	19,487
Vehicle Receipts	18,750	20,624
Reserves used for Equipment Purchases	15,600	14,762
Reserves used for Building	0	6,178
	<hr/>	<hr/>
Total Revenues	1,073,447	1,094,010
Expenditures	FY2005 Budget	Closeout FY05 Estimation
Committee Expense	42,000	40,974
Salaries & Fringe	730,908	723,175
Staff Travel	57,350	58,091
Office Space	24,500	21,550
Postage	13,000	9,252
Communications	11,500	9,540
Print/Publication	17,700	13,043
Supplies	7,100	6,693
Insurance	5,200	5,156
Depreciation (Non-building)	11,000	11,176
Audits	5,300	5,300
Computer	13,200	13,619
Equipment	15,600	14,762
Debt Service - Principal & Interest	11,800	11,800
Consultant/Contracted Services/Legal	52,818	71,560
Building Renovation	0	6,178
Other	17,688	18,071
Office Building Principal Payment	19,391	19,391
	<hr/>	<hr/>
Total Expenditures	1,056,055	1,059,330
Balance	17,392	34,680
Incr/(Decr) in Equipment Reserve	-4,600	-3,586
Incr/(Decr) in Building Reserve	12,265	6,087
Incr/(Decr) in Unrestricted Reserve	9,727	32,179
	<hr/> <hr/>	<hr/> <hr/>

The Commission does a mid-year budget revision in January to account for contracts, grants and other revenues and expenditures that were unknown at the time of the initial budget

SOUTHWEST REGIONAL DEVELOPMENT COMMISSION
July 1, 2005 - June 30, 2006

Revenues	FY2006 BUDGET
Tax Levy	252,000
MN Board on Aging-2005	31,029
MN Board on Aging-2006	31,030
Information & Assistance Funds-2005	154,545
Information & Assistance Funds-2006	153,005
Eldercare Development Partnership	30,000
Economic Dev. Adm.	54,628
MN/DOT	50,000
Current Contracts	132,606
Dept. Public Safety-Hazard Mitigation	15,500
Interest Earned & Miscellaneous	32,904
Inkind Match for Programs	36,167
Reserves used for Equipment Purchases	30,500
Total Revenues	<u>1,003,914</u>
Expenditures	FY2006 BUDGET
Committee Expense	42,000
Salaries & Fringe	812,778
Staff Travel	54,778
Office Space	24,500
Postage	11,050
Communications	11,338
Print/Publication	6,250
Supplies	11,225
Insurance	5,600
Depreciation (Non-building)	17,605
Audits	5,800
Computer	11,658
Equipment	30,500
Other	17,896
Consultant/Contracted Services/Legal	1,900
Program Inkind Match	36,167
Debt Service-Principal & Interest	11,800
Office Building Principal Payment	20,507
Total Expenditures	<u>1,133,352</u>
Balance	<u>-129,438</u>
Incr/(Decr) in Equipment Reserve	-12,895
Incr/(Decr) in Building Reserve	12,265
Incr/(Decr) in Unrestricted Reserve	<u>-128,808</u>

In a typical year the Commission adds revenue to the budget through contracts and grants throughout the year to make up for any projected initial deficit

FY2005 PROJECT REVIEWS

During Fiscal Year 2005 the Southwest Regional Development Commission reviewed 37 projects from within the Region to avoid duplication and insure wise use of public funds. If you are interested in receiving a complete listing of the project reviews for FY05, please contact the SRDC office

SOUTHWEST REGIONAL DEVELOPMENT COMMISSION

2401 Broadway Avenue
 Slayton, MN 56172

Phone: 507-836-8547
 Fax: 507-836-8866
 Email: srdc@swrdc.org
www.swrdc.org



**Audited Governmental Activities for
 the Year Ended June 30, 2004**

Revenues

Program Revenues	
Charges for Services and Other	\$ 341,043
Operating Grants	917,040
General Revenues	
Property Taxes—General	246,103
Property Taxes—Debt Service	232,080
Interest Revenues	10,978
Total Revenues	1,747,244

Expenses

Government Activities	1,450,719
Business Activities	38,184
Loss on Sale of Assets	262,726
Other Non-operating Expenses	22,794
Total Expenses	1,774,423

Change in Net Assets	\$ -27,179
Beginning Net Assets	\$ 901,222
Ending Net Assets	\$ 874,043

The FY 2004 Audit was conducted by Minehart, McKee & Associates, Certified Public Accountants, Marshall, Minnesota. The auditor's report expresses an unqualified opinion on the general purpose financial statements of Southwest Regional Development Commission.

**FISCAL YEAR 2005
 SOUTHWEST REGIONAL DEVELOPMENT
 COMMISSION MEMBERS**

- Connie Knorr ----- Cottonwood County Municipalities
- Darrell Holmberg ----- Cottonwood County Town Boards
- Gary Sorenson* ----- Cottonwood Co Commissioners
- Jim Schneider ----- Jackson County Municipalities
- Richard Peterson ----- Jackson County Town Boards
- Craig Rubis** ----- Jackson County Commissioners
- Gerald Willert ----- Lincoln County Municipalities
- Eloise Hauschild ----- Lincoln County Town Boards
- Larry Hansen** ----- Lincoln County Commissioners
- Joanne Myrvik ----- Lyon County Municipalities
- Lori Grant ----- Lyon County Town Boards
- Bob Fenske* ----- Lyon Co Commissioners
- Miron Carney ----- Murray County Municipalities
- Charles V. Swan ----- Murray County Town Boards
- Bill Sauer** ----- Murray County Commissioners
- Patricia Jansen ----- Nobles County Municipalities
- Brad Hoekstra ----- Nobles County Town Boards
- David Benson* ----- Nobles County Commissioners
- Harry L. Hansen ----- Pipestone County Municipalities
- Wally Bucher ----- Pipestone County Town Boards
- Jack Keers* ----- Pipestone County Commissioners
- Marlo Sander ----- Redwood County Municipalities
- Werner Fischer* ----- Redwood County Town Boards
- Gene Short** ----- Redwood Co Commissioners
- Fabian Deutsh ----- Rock County Municipalities
- Vern Vander Pol ----- Rock County Town Boards
- Robert Jarchow** ----- Rock County Commissioners
- Bob Byrnes* ----- City of Marshall
- Lyle TenHaken* ----- City of Worthington
- Dan Zimansky* ----- Region Eight School Boards
- Dick Gewerth ----- Region Eight School Boards
- Abdullahi Noor ----- Region Eight Cultural Diversity
- Steve Thovson ----- SW Center for Independent Living
- Mary Mulder ----- SW MN Private Industry Council
- Liz Struve ----- Southwest MN State University
- Kert Reedstrom ----- Health & Human Services

** Indicates Current & FY2005 Executive Comm. Members

*Indicates Current SRDC Board Members

Thank You to the following SRDC Commissioners whose terms expired in FY2005: James Elsing, Carol Flesner, Claire Gerber, Denise Gochenouer, David Hauge, Walter Kopp, Joe McCarvel, Doug Simon.