



Minnesota Office of Environmental Assistance

Report on 2003 SCORE Programs

A SUMMARY OF WASTE MANAGEMENT IN MINNESOTA

DECEMBER 2004



Minnesota Office of Environmental Assistance
520 Lafayette Road North
Saint Paul, MN 55155-4100
651-296-3417 or 800-657-3843 toll free
www.moea.state.mn.us

Authors and Contributors

Principal Author/Data Analysis: Mark Rust

Richard Andre

Ann Bernstein

Jerome Davis

David Fawcett

Paul Smith

Editing and Graphics

Scott Andre

Theresa Gaffey

Glenn Krocheski-Meyer

The total cost of preparing the Report on 2003 SCORE Programs was \$30,000, including staff time, writing, editing, and printing.

The OEA is reducing printing and mailing costs by using the Internet to distribute reports and information to a wider audience. For additional information on recycling, waste prevention and waste management, check out the OEA's web site: www.moea.state.mn.us/score/

This report was printed on recycled paper manufactured without the use of elemental chlorine (cover: 30% post-consumer; body: 100% post-consumer).

Introduction

The *Report on 2003 SCORE Programs* summarizes Minnesota's waste generation and recycling data for calendar year 2003. The report also provides details about waste-related efforts around the state, such as waste reduction activities, recycling, household hazardous waste and problem materials management, and the costs associated with these activities. This year's report has been streamlined and integrated with the OEA's web site (www.moea.state.mn.us/lc/score.cfm) to provide its primary audience (counties, cities, and elected officials) with a summary of key findings and links to more detailed data and information online.

The SCORE Program

Minnesota's statewide recycling efforts began in earnest in 1989, when the Legislature adopted comprehensive legislation based on the recommendations of the *Governor's Select Committee on Recycling and the Environment*. This set of laws, commonly referred to as SCORE, initiated a stable source of state funding for programs for recycling, as well as waste reduction and the improved management of household hazardous wastes and problem materials. The legislation, SCORE dollars, and revenue from counties and local government provide the basis for programs that are long-term and flexible within the scope of waste reduction, recycling, and problem materials management. These programs directly contribute to Minnesota's economic health through Minnesota's value-added recycling manufacturing industry, which has created more than 9,000 jobs and provided nearly \$64 million in annual tax revenues. These jobs, in turn, support another 10,000-plus people in indirect and induced jobs. Altogether, the recycling industry pays an estimated \$760 million in wages and adds \$2.98 billion to the state's economy. Significantly, while many sectors of the state lost jobs in 2001-2003, the recycling industry showed a 3.4 percent gain in employment, adding over 300 jobs. For more information on how recycling helps the state's economy, visit OEA's web site: www.moea.state.mn.us/market/valueadded.cfm.

Analyzing the data

Data for this *Report on 2003 SCORE Programs* were collected from all 87 counties in Minnesota and the Western Lake Superior Sanitary District (WLSSD)¹ using the annual SCORE survey. County solid waste staff members provide details on local programs for solid waste management and recycling.

The OEA uses the information from these county reports to calculate the state's recycling rates, the cost of managing waste and recycling, and to detail trends in waste generation and disposal. While data collection began in 1989, the OEA typically uses calendar year 1991 as a baseline for trend analysis. In 1991, counties began collecting data on a calendar year basis, instead of a fiscal year basis, and by that point, data collection and format had greatly improved, making the quality of the data that much better.

MSW Generation in Minnesota

Since the state first collected SCORE data in 1989, Minnesota has shown a steady growth in municipal solid waste (MSW), reflected in both the total amount of MSW generated and in the per capita figures.

Mixed MSW is defined by statute as "garbage, refuse, and other solid waste from residential, commercial, industrial, and community activities that the generator of the waste aggregates for collection." It includes common materials found in household and commercial garbage such as packaging materials, containers, food discards, and other compostable materials, plastic, paper, etc. Municipal solid waste does *not* include auto hulks, street sweepings, ash, construction debris, mining waste, sludges, tree and agricultural wastes, tires, lead

¹ WLSSD is a special-purpose subdivision of the state that is charged with addressing water pollution, solid waste collection, and disposal of sewage. WLSSD, established in 1971, covers nearly 500 square miles in St. Louis County, and includes the cities of Duluth, Cloquet, Carlton, Scanlon, Wrenshall, Hermantown, Proctor, and Thompson. It coordinates programs for nearly 115,000 people in the region.

acid batteries, motor and vehicle fluids and filters, and other materials collected, processed, and disposed of as separate waste streams (Minn. Stat. § 115A.03, subd. 20).

Total generation of the state's municipal solid waste includes wastes recycled, discarded (including tons sent to disposal and resource recovery facilities), and tons disposed of on-site (burn barrels or farm dumps).

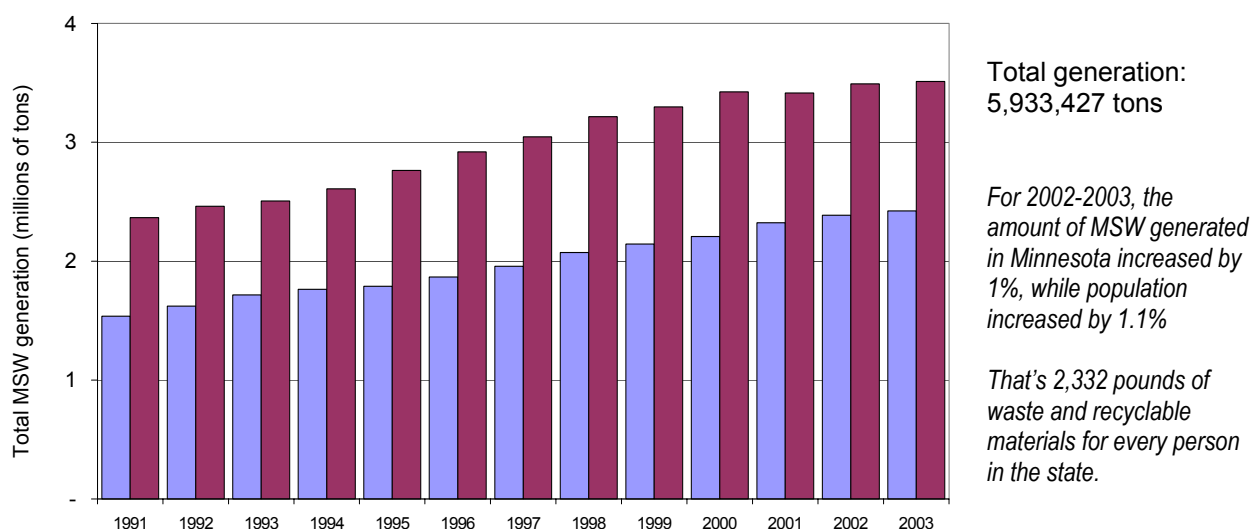
Totals and trends

Minnesota MSW generation totaled 5,933,427 tons in 2003. Statewide, this represents a one percent increase over the previous year. This is particularly noteworthy given that it is the smallest increase in MSW generation since the inception of SCORE. Since 1991, MSW generation has grown on average by 3.6 percent per year. Significantly, after the period of biggest growth (1989-1997), the average increase in MSW generation has dropped to 2.3 percent over the past six years (1998-2003).

While improvement in waste reduction techniques and efforts may account for some of this decline, waste generation can be expected to decrease during times of economic recession.

As in 2002, 41 percent of the state's MSW generation came from counties in Greater Minnesota and 59 percent came from counties in the seven-county Metropolitan Area.

Figure 1: Minnesota MSW generation



	1991	1997	1998	1999	2000	2001	2002	2003	Changes 1991-2003	
									MSW	Population
Greater Minnesota	1.54	1.96	2.07	2.14	2.21	2.32	2.39	2.42	57.6%	11.9%
Metropolitan Area	2.37	3.05	3.22	3.30	3.42	3.42	3.49	3.51	48.5%	18.2%
Minnesota	3.90	5.00	5.29	5.44	5.63	5.74	5.88	5.93	52.0%	15.2%

For full data for 1991-2003, refer to Appendices.

Per capita MSW generation

Another way the OEA evaluates MSW growth is on a per capita basis. By dividing the state's total generation of waste by the state's population, OEA calculates the amount of waste that the "average" Minnesotan creates each year in an attempt to understand if waste growth is coming primarily from an increase in population or increases in consumption.

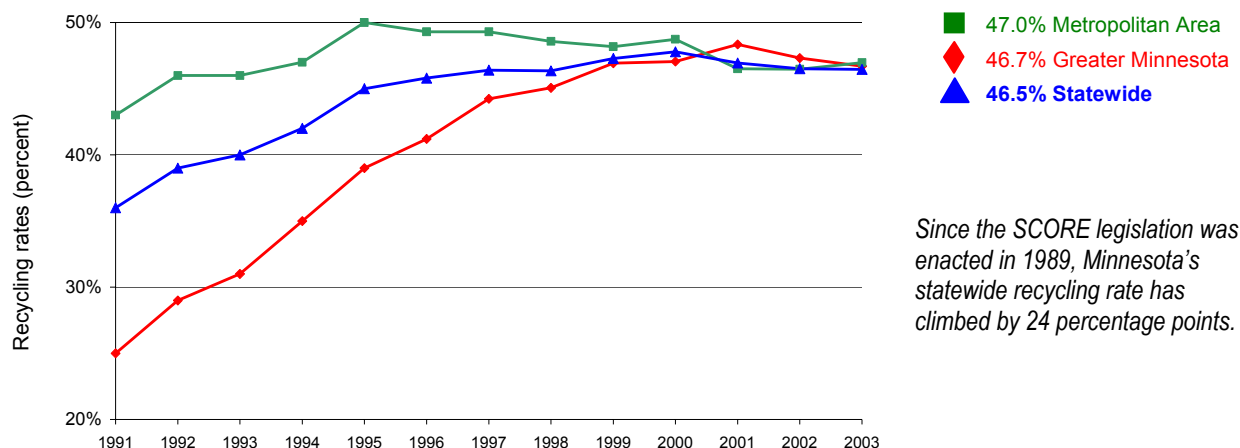
Similar to the small increase in overall MSW generation noted above, we find, for the first time since SCORE data has been collected, a decrease in per-capita MSW generation. In 2003, the per-capita rate was 1.167 tons, a decrease of 0.13 percent. Although this decrease may seem minimal, it becomes significant when put into context with the past trend—over the past 14 plus years of SCORE data collection, per-capita MSW growth has increased, on average, by 2.3 percent annually and has never been less than 1 percent.

Recycling and Waste Reduction

The heart of SCORE is Minnesota's recycling efforts, and Minnesota's programs are among the nation's most successful. In 2003, Minnesota's recycling rate (including credits for yard waste recycling and waste reduction efforts) has held steady from 2001 and 2002 at 46.5 percent, continuing to place the state among the top ten in the nation according to *Biocycle* magazine's annual survey. The state's base recycling rate (which is the actual percentage of materials recycled and does not include the additional source reduction and yard waste credits) is 39.2 percent, virtually unchanged from 2002 but up a small amount and matching levels observed in 2000.

In 2003, recycling programs in Minnesota collected over 2.3 million tons of recyclable materials (paper, metals, glass, plastic, food, problem materials, and more), an increase of 28,000 tons, or 1.2 percent, from the previous year. Since 1991, the tons of materials collected for recycling in Minnesota have nearly doubled, growing by 95 percent, and the statewide recycling rate has increased by 10.5 percentage points.

Figure 2: Minnesota's recycling progress



Commercial and residential recycling

As in past years, the percent breakout of commercial and residential recycling is unchanged: commercial tonnages account for 75 percent of the total collected and processed and residential tonnages account for 25 percent of the total.

The environmental and economic benefits of recycling

Recycling is important in Minnesota—both environmentally and economically. The National Recycling Coalition's (NRC) "environmental benefits calculator" estimates environmental benefits based on the tons of

specified materials recycled, landfilled, and incinerated in a particular geographic region. The Recycling Association of Minnesota (RAM) worked with this model to calculate the benefits for Minnesota's recycling efforts using the 2003 SCORE data. For a complete breakout of quantified benefits like energy conservation, greenhouse gas savings, resource savings, and reduced air and water emissions, go to www.moea.state.mn.us/lc/score.cfm.

In addition to recycling's environmental benefits, recycling industries make a substantial contribution to the state's economy. Minnesota's recycling manufacturers contribute an estimated \$2.98 billion to the state's economy, supporting nearly 20,000 jobs in total. In addition to the contributions of these value-added manufacturers, there is economic value related to collecting, processing, and marketing recyclables in Minnesota (which is supported by SCORE dollars). Further information is available in OEA's *Minnesota's Recycling Industries: Economic Activity Summary*: www.moea.state.mn.us/market/economic.cfm. The information in the study is part of the U.S. Recycling Economic Information Study, with cooperation from the U.S. EPA, the National Recycling Coalition, and 16 other states.

Waste and toxicity reduction

Preventing waste at its source is at the top of the waste management hierarchy because it is the most beneficial waste management strategy, both economically and environmentally. Waste that is prevented at its source does not need to be managed or recycled, which means fewer costs and less pollution from transporting, recycling, processing, or landfilling wastes, in addition to the significant benefits associated with manufacturing and distributing goods and materials made with recycled content.

While various factors including pollution and waste prevention techniques as well as economic conditions affect the rate of overall MSW growth, state, county, and city governments must continue to address the significant cost of removing toxic materials from the waste stream. In 2003, the state's HHW program was transferred from the Pollution Control Agency to the OEA. The OEA continues to work with local HHW facilities, manufacturers, and the general public to reduce problem material generation through education, reuse, recycling, Design for the Environment (DfE), and product stewardship partnerships.

MSW Processing and Disposal

In 2003, waste that was not recycled or prevented/reduced and, therefore, must be disposed of, totaled over 3.6 million tons. These tons, which increased by nearly 1 percent from 2002, include waste disposed of or processed, as well as estimates for on-site disposal and problem materials not recycled.

In Minnesota, waste is managed through four main methods: landfills, waste processing/resource recovery facilities, source-separated composting, and on-site disposal.

Trends in waste disposal

Waste management in Minnesota is guided by a hierarchy that prioritizes waste reduction, recycling/composting, and resource recovery. During 2003, source-separated composting had the largest increase of over 40 percent, followed by MSW composting at 7 percent. The amount of waste sent to landfills—the least-preferred disposal option—increased by nearly 3 percent (61,000 tons). The declines in the area of disposal/processing came from on-site disposal (estimates from county staff on the level of on-site dumping and burning that occur), which declined by 1.8 percent, and waste-to-energy,

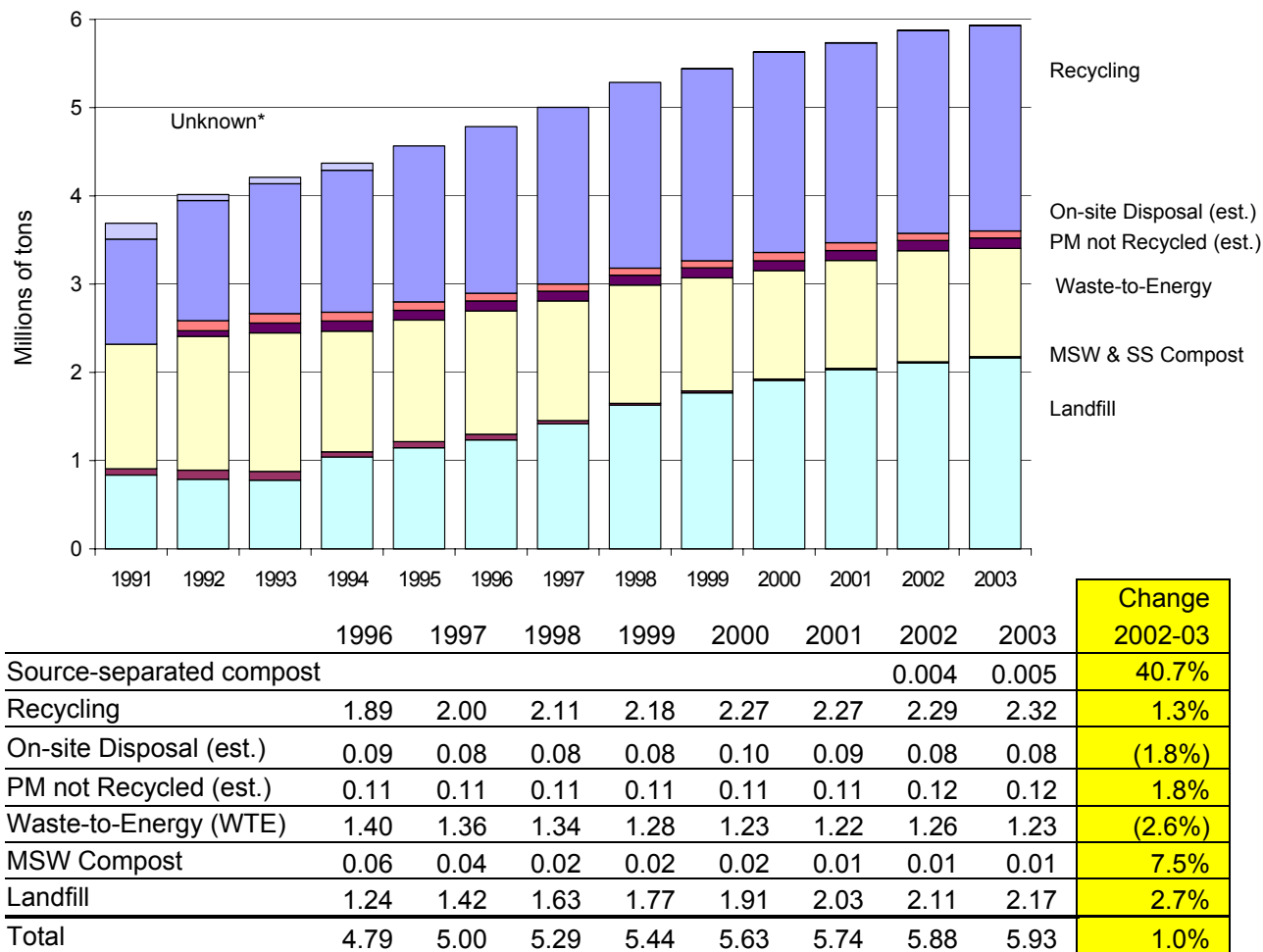
Figure 3: MSW Disposal and Processing in Minnesota, 2003

		Change 2002-03
Landfill	60.0%	2.7%
Waste-to-Energy	34.0%	(2.6%)
Problem Materials not recycled (est.)	3.3%	1.8%
On-site Disposal (est.)	2.2%	(1.8%)
MSW Compost	0.4%	7.5%
Source-separated compost	0.1%	40.7%

Percentages of total waste disposal, excluding recycling. Decreases indicated by parentheses (x%).

which declined by 2.6% percent. Since reaching its highest level in 1993 at just over 1.5 million tons, resource recovery has declined as a percent of overall disposal/processing methods by 22 percent in the last 10 years. In addition to working with existing facilities to increase capacity and provide ongoing operational technical assistance, the OEA began providing assistance in 2003 to a potential new resource recovery facility that may be located in Lamberton, Minn., and serve 9 counties in southwest Minnesota.

Figure 4: Trends in Minnesota waste management



Figures in millions of tons. PM = Problem Materials. Decreases indicated by parentheses (x%).

* Unknown destination waste totals were only reported during the early years of SCORE (1989-1994).

Funding of SCORE Programs

Minnesota boasts one of the best recycling rates in the nation due to the level of participation by our citizens and businesses, along with comprehensive recycling programs at the city and county levels—programs funded by local government and state revenues. In 2003, Minnesota counties spent over \$49 million for SCORE-related programs, an increase of over \$2.5 million, or 5 percent, from 2002.

Continued funding commitments from the Legislature and significant investments at the local level provide the funding these programs require.

State funding: SCORE block grants

From the inception of SCORE, state tax revenue has provided a stable funding source for recycling and waste reduction programs. Money from the state is passed on to the county level in the form of annual block grants. The OEA disbursed \$11.2 million in SCORE block grants to eligible counties in CY2003, a reduction of roughly \$1.5 million from CY2002.

This 11.5 percent reduction in CY2003 SCORE grant dollars stems from a general revenue unallotment enacted by the Governor in February 2003. However, unlike the permanent ten percent reduction enacted by the Legislature in CY2002 which reduced the total SCORE grant dollars from \$14.1 million to \$12.6 million, the unallotted \$1.5 million in CY2003 was a one-time reduction in SCORE grant funds. In CY2004, SCORE grants again totaled over \$12.5 million, though still \$1.6 million per year shy of previous years' funding levels (CY1992-2001).

Within certain guidelines, counties have broad discretion in determining how to spend SCORE block grants and local matching funds, which gives them flexibility to develop programs that best meet local needs. The OEA monitors the county use of SCORE grants to ensure they are used to fund SCORE-eligible programs: source reduction, recycling, market development, management of problem materials, waste education, litter prevention, technical assistance to ensure proper solid waste management, and waste processing (Minn. Stat. § 115A.55).

Despite the economic value of the recycling industry to the state's economy, Minnesota's recycling infrastructure faces challenges. Some counties are dealing with budget reductions by closing down recycling centers or limiting the types of materials they collect. Plastic and glass recycling have been eliminated in some communities. Rural recycling programs, in particular, are facing more obstacles in getting materials to distant markets. The OEA continues to explore ways to better support county recycling programs and secondary markets, recover more recyclable and organic material from the waste stream, and identify more opportunities to reduce, reuse, and recycle in the manufacturing and business sectors. OEA's strategic objective is to continue efforts to expand Minnesota's secondary markets, increase recycling employment to 9,600 jobs, and grow the industry overall by 20 percent in the next ten years.

County funding

Between 1993 and 2003, overall SCORE expenditures have increased by 20 percent. These increases have been funded entirely at the local level by counties and cities through use of general revenue, special assessments, or other sources of revenue.

Each county is required to match the funding from the Legislature with a local contribution of at least 25 percent. In 2003, counties exceeded this match by 11 times, spending over \$35 million of county funds toward SCORE-related activities. This investment is in addition to undocumented dollars spent by other local units of government such as cities and townships on programs such as recycling, household hazardous waste, and waste education.

Figure 5 indicates this trend and shows the continued reliance on local dollars to fund reduction, recycling, HHW, and other SCORE programs.

Figure 5: SCORE expenditures (millions of dollars)

	1991	1996	1997	1998	1999	2000	2001	2002	2003	Change 2002-03
Greater Minnesota	13.5	19.8	20.4	21.5	23.0	23.1	25.8	26.7	29.5	10.2%
Metropolitan Area	22.4	17.1	16.1	16.7	18.4	18.6	20.2	19.9	19.7	(1.4%)
Total	35.9	36.8	36.6	38.1	41.4	41.7	46.0	46.7	49.1	5.2%

Decreases indicated by parentheses (x%). The annual SCORE survey includes only county spending; local units of government also fund programs for waste management, reduction, and recycling.

Appendix A: County SCORE Survey Responses

County SCORE Survey Responses

Finances: Revenues (part 1)

County	CY2002 revenue carried over	Adjustment to carryover	General revenue	Service fee	Processing facility tip fee	Land disposal facility surcharge
Aitkin	\$165,951	0	\$185,784	\$700	\$40,154	\$0
Anoka	\$0	0	\$35,449	\$74,181	\$0	\$0
Becker	\$0	0	\$0	\$0	\$0	\$0
Beltrami	\$0	0	\$0	\$453,760	\$0	\$0
Benton	\$4,188	0	\$0	\$18,310	\$0	\$0
Big Stone	\$37,196	0	\$58,070	\$0	\$0	\$0
Blue Earth	\$0	0	\$0	\$207,023	\$0	\$0
Brown	(\$74,490)	74,490	\$0	\$316,502	\$0	\$0
Carlton	\$0	0	\$83,495	\$0	\$34,523	\$0
Carver	\$0	0	\$0	\$393,481	\$0	\$0
Cass	\$0	0	\$0	\$692,892	\$0	\$0
Chippewa	\$44	0	\$112,755	\$0	\$0	\$0
Chisago	\$87,008	0	\$0	\$114,002	\$0	\$0
Clay	\$184,451	0	\$0	\$432,751	\$0	\$0
Clearwater	\$0	0	\$0	\$76,348	\$0	\$0
Cook	\$0	0	\$129,601	\$0	\$0	\$0
Cottonwood	(\$2,316)	42,015	\$13,750	\$120,940	\$0	\$0
Crow Wing	\$0	0	\$479,450	\$0	\$43,032	\$0
Dakota	\$0	0	\$0	\$0	\$0	\$803,744
Dodge	(\$2,936)	2,936	\$137,632	\$0	\$20,226	\$0
Faribault	(\$15)	0	\$17,000	\$32,300	\$0	\$0
Fillmore	\$116,853	0	\$10,956	\$0	\$0	\$0
Freeborn	\$0	0	\$301,832	\$0	\$0	\$0
Goodhue	\$0	0	\$198,044	\$9,324	\$0	\$0
Grant	(\$297)	0	\$0	\$135,494	\$0	\$0
Hennepin	\$0	0	\$0	\$5,854,698	\$1,310	\$0
Houston	\$0	0	\$121,681	\$0	\$0	\$0
Hubbard	(\$40,804)	0	\$13,750	\$393,940	\$0	\$0
Isanti	\$92,400	0	\$16,995	\$0	\$0	\$0
Itasca	\$0	0	\$365,269	\$0	\$0	\$0
Jackson	\$131,326	0	\$32,904	\$0	\$0	\$0
Kanabec	\$114,969	0	\$10,897	\$0	\$0	\$0
Kandiyohi	\$0	0	\$0	\$0	\$0	\$0
Kittson	\$0	0	\$23,757	\$0	\$42,082	\$0
Koochiching	\$0	0	\$12,769	\$100,000	\$29,406	\$0
Lac Qui Parle	\$24,717	0	\$20,325	\$0	\$0	\$0
1Lake	(\$166,841)	166,841	\$0	\$66,026	\$0	\$0
Lake of the Woods	\$0	0	\$51,019	\$988	\$0	\$0
Le Sueur	\$0	0	\$75,712	\$0	\$0	\$0
Lincoln	\$73,144	0	\$12,327	\$0	\$552	\$0
Lyon	\$0	0	\$0	\$222,976	\$0	\$80,000
Mahnomen	\$69,186	0	\$10,950	\$0	\$0	\$0
Marshall	\$0	0	\$10,870	\$0	\$0	\$0
Martin	(\$109,561)	109,561	\$176,328	\$0	\$0	\$0
McLeod	\$0	0	\$0	\$0	\$0	\$760,152
Meeker	\$20,780	0	\$15,000	\$0	\$0	\$0

County SCORE Survey Responses

Finances: Revenues (part 1)

County	CY2002 revenue carried over	Adjustment to carryover	General revenue	Service fee	Processing facility tip fee	Land disposal facility surcharge
Mille Lacs	(\$23,974)	23,974	\$75,255	\$0	\$0	\$0
Morrison	\$0	0	\$49,632	\$0	\$0	\$0
Mower	\$0	0	\$0	\$219,833	\$0	\$0
Murray	\$52,769	0	\$13,750	\$0	\$310	\$0
Nicollet	\$0	0	\$207,412	\$0	\$0	\$0
Nobles	\$47,920	0	\$12,964	\$173,083	\$0	\$137,642
Norman	\$113	0	\$10,897	\$0	\$0	\$0
Olmsted	\$0	0	\$0	\$0	\$282,897	\$0
Otter Tail	\$18,200	0	\$0	\$575,792	\$0	\$0
Pennington	\$0	0	\$60,673	\$0	\$0	\$0
Pine	(\$25,617)	25,617	\$82,449	\$0	\$0	\$0
Pipestone	\$0	0	\$121,994	\$0	\$0	\$0
Polk	\$73,737	0	\$0	\$249,951	\$0	\$0
Pope/Douglas	(\$79,235)	0	\$200,000	\$0	\$0	\$0
Ramsey	\$0	0	\$0	\$3,186,156	\$0	\$0
Red Lake	\$0	0	\$58,500	\$0	\$0	\$0
Redwood	\$0	0	\$129,451	\$208,261	\$0	\$0
Renville	\$147,854	0	\$137,479	\$0	\$3,369	\$0
Rice	(\$65,403)	65,403	\$0	\$368,891	\$0	\$0
Rock	\$1,233	0	\$60,990	\$0	\$0	\$0
Roseau	(\$102,905)	0	\$0	\$0	\$0	\$0
Scott	\$555,506	0	\$171,953	\$0	\$0	\$0
Sherburne	\$91,769	0	\$0	\$0	\$0	\$50,939
Sibley	\$0	0	\$110,364	\$0	\$0	\$0
St. Louis	\$0	0	\$0	\$570,575	\$0	\$35,970
Stearns	\$115,881	0	\$62,542	\$108,261	\$0	\$0
Steele	\$0	0	\$10,488	\$333,373	\$0	\$0
Stevens	\$62,902	0	\$12,375	\$0	\$0	\$0
Swift	(\$4,522)	4,522	\$72,500	\$0	\$0	\$0
Todd	\$0	0	\$124,481	\$0	\$0	\$0
Traverse	(\$19,119)	19,119	\$10,897	\$0	\$0	\$0
Wabasha	(\$61,535)	61,535	\$11,190	\$0	\$0	\$0
Wadena	\$0	0	\$41,376	\$0	\$0	\$0
Waseca	\$0	0	\$0	\$65,575	\$0	\$0
Washington	\$0	0	\$0	\$726,765	\$0	\$0
Watsonwan	\$274,467	0	\$12,768	\$128,236	\$0	\$0
Wilkin	(\$5,114)	0	\$0	\$66,415	\$0	\$0
Winona	(\$7,836)	0	\$583,171	\$0	\$0	\$0
WLSSD	\$416,523	4,006	\$0	\$335,088	\$332,527	\$0
Wright	\$913,771	0	\$49,599	\$15,953	\$0	\$0
Yellow Medicine	\$0	0	\$13,750	\$49,650	\$0	\$20,617
<hr/>						
Metro Area	\$91,769	\$0	\$35,449	\$10,235,281	\$1,310	\$854,683
Greater Minn.	\$3,010,570	\$600,019	\$5,207,819	\$6,863,211	\$829,077	\$1,034,381
Minnesota	\$3,102,339	\$600,019	\$5,243,268	\$17,098,492	\$830,387	\$1,889,064

County SCORE Survey Responses

Finances: Revenues (part 2)

County	SCORE pass-through	Grants	HHW funding	Material sales	Other	Total Revenue
Aitkin	\$43,588	\$0	\$3,424	\$0	\$1,200	\$440,800
Anoka	\$626,623	\$0	\$0	\$0	\$1,007,196	\$1,743,449
Becker	\$62,597	\$0	\$17,713	\$0	\$345,365	\$425,675
Beltrami	\$36,288	\$0	\$7,230	\$0	\$0	\$497,278
Benton	\$73,632	\$0	\$0	\$0	\$2,285	\$98,415
Big Stone	\$43,588	\$17,820	\$2,400	\$0	\$525	\$159,599
Blue Earth	\$116,361	\$0	\$61,013	\$0	\$38,651	\$423,049
Brown	\$54,883	\$0	\$3,696	\$0	\$14,486	\$389,566
Carlton	\$66,420	\$17,315	\$8,788	\$0	\$0	\$210,541
Carver	\$153,290	\$131,883	\$0	\$0	\$97,340	\$775,993
Cass	\$56,935	\$21,440	\$9,890	\$0	\$0	\$781,156
Chippewa	\$43,588	\$0	\$2,400	\$0	\$0	\$158,786
Chisago	\$90,358	\$14,454	\$0	\$0	\$14,471	\$320,293
Clay	\$106,368	\$0	\$11,244	\$0	\$1,314	\$736,129
Clearwater	\$43,588	\$0	\$7,453	\$16,557	\$0	\$143,947
Cook	\$43,588	\$0	\$2,844	\$53,985	\$0	\$230,018
Cottonwood	\$43,588	\$0	\$667	\$591	\$7,567	\$226,801
Crow Wing	\$116,460	\$18,000	\$11,227	\$0	\$0	\$668,169
Dakota	\$752,088	\$0	\$0	\$0	\$87,514	\$1,643,346
Dodge	\$43,588	\$0	\$1,844	\$84,608	\$0	\$287,898
Faribault	\$43,588	\$0	\$2,829	\$0	\$400	\$96,102
Fillmore	\$43,824	\$2,878	\$7,166	\$0	\$1,230	\$182,908
Freeborn	\$66,410	\$894	\$9,570	\$748	\$1,020	\$380,474
Goodhue	\$92,112	\$0	\$0	\$119,814	\$500	\$419,795
Grant	\$43,588	\$0	\$0	\$0	\$418	\$179,203
Hennepin	\$2,295,634	\$420,387	\$0	\$628,056	\$98,928	\$9,299,013
Houston	\$43,588	\$0	\$5,703	\$137,022	\$3,757	\$311,752
Hubbard	\$49,500	\$0	\$0	\$0	\$0	\$416,386
Isanti	\$67,979	\$0	\$0	\$0	\$0	\$177,374
Itasca	\$90,535	\$0	\$4,952	\$0	\$0	\$460,756
Jackson	\$43,588	\$0	\$667	\$0	\$7,291	\$215,777
Kanabec	\$0	\$43,588	\$0	\$0	\$0	\$169,454
Kandiyohi	\$84,775	\$0	\$64,054	\$316,734	\$237,435	\$702,998
Kittson	\$43,588	\$0	\$4,692	\$22,880	\$5,574	\$142,573
Koochiching	\$43,588	\$0	\$3,509	\$16,635	\$0	\$205,907
Lac Qui Parle	\$43,588	\$0	\$2,400	\$0	\$0	\$91,030
Lake	\$43,588	\$5,000	\$5,854	\$22,400	\$3,794	\$146,662
Lake of the Woods	\$43,588	\$0	\$0	\$32,723	\$930	\$129,248
Le Sueur	\$53,014	\$0	\$3,261	\$12,532	\$10,648	\$155,167
Lincoln	\$43,588	\$10,900	\$0	\$0	\$1,008	\$141,519
Lyon	\$22,971	\$30,000	\$58,284	\$0	\$33,884	\$448,115
Mahnomen	\$43,588	\$0	\$3,304	\$0	\$0	\$127,028
Marshall	\$43,588	\$0	\$4,989	\$13,652	\$8,626	\$81,726
Martin	\$44,248	\$0	\$6,325	\$0	\$0	\$226,901
McLeod	\$72,610	\$0	\$12,888	\$33,543	\$2,206,959	\$3,086,152
Meeker	\$20,575	\$0	\$4,521	\$482	\$0	\$61,358

County SCORE Survey Responses

Finances: Revenues (part 2)

County	SCORE pass-through	Grants	HHW funding	Material sales	Other	Total Revenue
Mille Lacs	\$47,762	\$0	\$0	\$0	\$0	\$123,017
Morrison	\$66,235	\$0	\$4,419	\$0	\$313,004	\$433,290
Mower	\$79,697	\$0	\$13,518	\$148,423	\$110,648	\$572,119
Murray	\$43,588	\$0	\$667	\$0	\$968	\$112,053
Nicollet	\$62,174	\$0	\$6,419	\$14,832	\$5,190	\$296,026
Nobles	\$43,588	\$0	\$0	\$0	\$5,721	\$420,918
Norman	\$43,588	\$0	\$2,880	\$170	\$0	\$57,648
Olmsted	\$263,924	\$75	\$121,659	\$0	\$82,392	\$750,947
Otter Tail	\$119,480	\$0	\$39,119	\$426,331	\$29,870	\$1,208,792
Pennington	\$43,588	\$5,412	\$0	\$0	\$3,229	\$112,902
Pine	\$55,737	\$0	\$0	\$0	\$0	\$138,186
Pipestone	\$43,588	\$0	\$0	\$0	\$0	\$165,582
Polk	\$64,184	\$0	\$8,074	\$38,160	\$6,594	\$440,699
Pope/Douglas	\$112,547	\$0	\$14,064	\$0	\$2,480	\$249,855
Ramsey	\$1,044,569	\$228,101	\$0	\$0	\$97,951	\$4,556,777
Red Lake	\$43,588	\$0	\$5,401	\$10,773	\$0	\$118,262
Redwood	\$43,588	\$16,000	\$31,430	\$98,192	\$4,380	\$531,301
Renville	\$43,588	\$0	\$0	\$0	\$0	\$332,290
Rice	\$119,414	\$0	\$28,215	\$389,972	\$52,104	\$958,596
Rock	\$43,588	\$0	\$0	\$0	\$15,430	\$121,241
Roseau	\$43,588	\$0	\$7,504	\$17,013	\$8,435	(\$26,365)
Scott	\$199,942	\$0	\$0	\$0	\$0	\$927,401
Sherburne	\$143,754	\$0	\$1,695	\$0	\$266	\$288,423
Sibley	\$43,588	\$0	\$2,503	\$10,321	\$5,865	\$172,641
St. Louis	\$202,191	\$0	\$11,719	\$253,911	\$0	\$1,074,366
Stearns	\$278,404	\$0	\$5,458	\$0	\$21,222	\$591,768
Steele	\$70,353	\$0	\$11,186	\$0	\$676	\$426,076
Stevens	\$43,588	\$0	\$0	\$0	\$0	\$118,865
Swift	\$43,588	\$0	\$2,400	\$96,098	\$0	\$214,586
Todd	\$50,243	\$0	\$2,100	\$58,370	\$0	\$235,193
Traverse	\$43,588	\$0	\$0	\$0	\$0	\$54,485
Wabasha	\$44,758	\$0	\$3,575	\$1,113	\$1,200	\$61,835
Wadena	\$43,588	\$0	\$2,903	\$378	\$4	\$88,249
Waseca	\$43,588	\$0	\$7,427	\$120,202	\$840	\$237,631
Washington	\$427,629	\$153,321	\$0	\$0	\$28,603	\$1,336,318
Watsonwan	\$43,588	\$0	\$3,042	\$0	\$974	\$463,076
Wilkin	\$43,588	\$0	\$0	\$60,660	\$2,120	\$167,670
Winona	\$102,186	\$0	\$26,392	\$34,718	\$6,775	\$745,406
WLSSD	\$207,961	\$28,550	\$278,205	\$27,577	\$48,548	\$1,678,985
Wright	\$198,395	\$745	\$7,780	\$1,043	\$12,829	\$1,200,114
Yellow Medicine	\$43,588	\$0	\$667	\$0	\$449	\$128,721
<hr/>						
Metro Area	\$5,443,587	\$933,692	\$1,695	\$628,056	\$1,417,798	\$19,643,320
Greater Minn.	\$5,490,786	\$233,071	\$1,005,529	\$2,693,162	\$3,691,285	\$30,658,909
Minnesota	\$10,934,373	\$1,166,762	\$1,007,224	\$3,321,218	\$5,109,083	\$50,302,228

County SCORE Survey Responses

Finances: Revenue Summary

County	Adjusted CY2002 Revenue (carried over)	CY2003 Revenue	Total Revenue
Aitkin	\$165,951	\$274,849	\$440,800
Anoka	\$0	\$1,743,449	\$1,743,449
Becker	\$0	\$425,675	\$425,675
Beltrami	\$0	\$497,278	\$497,278
Benton	\$4,188	\$94,227	\$98,415
Big Stone	\$37,196	\$122,403	\$159,599
Blue Earth	\$0	\$423,049	\$423,049
Brown	\$0	\$389,566	\$389,566
Carlton	\$0	\$210,541	\$210,541
Carver	\$0	\$775,993	\$775,993
Cass	\$0	\$781,156	\$781,156
Chippewa	\$44	\$158,743	\$158,786
Chisago	\$87,008	\$233,284	\$320,293
Clay	\$184,451	\$551,678	\$736,129
Clearwater	\$0	\$143,947	\$143,947
Cook	\$0	\$230,018	\$230,018
Cottonwood	\$39,700	\$187,102	\$226,801
Crow Wing	\$0	\$668,169	\$668,169
Dakota	\$0	\$1,643,346	\$1,643,346
Dodge	\$0	\$287,898	\$287,898
Faribault	(\$15)	\$96,117	\$96,102
Fillmore	\$116,853	\$66,055	\$182,908
Freeborn	\$0	\$380,474	\$380,474
Goodhue	\$0	\$419,795	\$419,795
Grant	(\$297)	\$179,500	\$179,203
Hennepin	\$0	\$9,299,013	\$9,299,013
Houston	\$0	\$311,752	\$311,752
Hubbard	(\$40,804)	\$457,190	\$416,386
Isanti	\$92,400	\$84,974	\$177,374
Itasca	\$0	\$460,756	\$460,756
Jackson	\$131,326	\$84,450	\$215,777
Kanabec	\$114,969	\$54,485	\$169,454
Kandiyohi	\$0	\$702,998	\$702,998
Kittson	\$0	\$142,573	\$142,573
Koochiching	\$0	\$205,907	\$205,907
Lac Qui Parle	\$24,717	\$66,313	\$91,030
Lake	\$0	\$146,662	\$146,662
Lake of the Woods	\$0	\$129,248	\$129,248
Le Sueur	\$0	\$155,167	\$155,167
Lincoln	\$73,144	\$68,375	\$141,519
Lyon	\$0	\$448,115	\$448,115
Mahnomen	\$69,186	\$57,842	\$127,028
Marshall	\$0	\$81,726	\$81,726
Martin	\$0	\$226,901	\$226,901
McLeod	\$0	\$3,086,152	\$3,086,152
Meeker	\$20,780	\$40,578	\$61,358

County SCORE Survey Responses

Finances: Revenue Summary

County	Adjusted CY2002 Revenue (carried over)	CY2003 Revenue	Total Revenue
Mille Lacs	\$0	\$123,017	\$123,017
Morrison	\$0	\$433,290	\$433,290
Mower	\$0	\$572,119	\$572,119
Murray	\$52,769	\$59,283	\$112,053
Nicollet	\$0	\$296,026	\$296,026
Nobles	\$47,920	\$372,998	\$420,918
Norman	\$113	\$57,535	\$57,648
Olmsted	\$0	\$750,947	\$750,947
Otter Tail	\$18,200	\$1,190,592	\$1,208,792
Pennington	\$0	\$112,902	\$112,902
Pine	\$0	\$138,186	\$138,186
Pipestone	\$0	\$165,582	\$165,582
Polk	\$73,737	\$366,962	\$440,699
Pope/Douglas	(\$79,235)	\$329,091	\$249,855
Ramsey	\$0	\$4,556,777	\$4,556,777
Red Lake	\$0	\$118,262	\$118,262
Redwood	\$0	\$531,301	\$531,301
Renville	\$147,854	\$184,436	\$332,290
Rice	\$0	\$958,596	\$958,596
Rock	\$1,233	\$120,008	\$121,241
Roseau	(\$102,905)	\$76,540	(\$26,365)
Scott	\$555,506	\$371,895	\$927,401
Sherburne	\$91,769	\$196,654	\$288,423
Sibley	\$0	\$172,641	\$172,641
St. Louis	\$0	\$1,074,366	\$1,074,366
Stearns	\$115,881	\$475,886	\$591,768
Steele	\$0	\$426,076	\$426,076
Stevens	\$62,902	\$55,963	\$118,865
Swift	\$0	\$214,586	\$214,586
Todd	\$0	\$235,193	\$235,193
Traverse	\$0	\$54,485	\$54,485
Wabasha	\$0	\$61,835	\$61,835
Wadena	\$0	\$88,249	\$88,249
Waseca	\$0	\$237,631	\$237,631
Washington	\$0	\$1,336,318	\$1,336,318
Watsonwan	\$274,467	\$188,609	\$463,076
Wilkin	(\$5,114)	\$172,783	\$167,670
Winona	(\$7,836)	\$753,242	\$745,406
WLSSD	\$420,529	\$1,258,456	\$1,678,985
Wright	\$913,771	\$286,343	\$1,200,114
Yellow Medicine	\$0	\$128,721	\$128,721
<hr/>			
Metro Area	\$91,769	\$19,551,550	\$19,643,320
Greater Minn.	\$3,610,588	\$27,048,320	\$30,658,909
Minnesota	\$3,702,358	\$46,599,871	\$50,302,228

County SCORE Survey Responses

Finances: Expenditures by program area (part 1)

County	Planning & administration	Recycling	Yard waste	HHW and problem materials	Source reduction
Aitkin	\$113,949	\$122,808	\$825	\$31,227	\$0
Anoka	\$548,397	\$23,517	\$81,005	\$362,199	\$3,830
Becker	\$137,593	\$169,426	\$9,821	\$45,072	\$0
Beltrami	\$0	\$478,391	\$0	\$18,887	\$0
Benton	\$28,386	\$29,249	\$0	\$9,512	\$0
Big Stone	\$12,754	\$95,706	\$0	\$4,912	\$0
Blue Earth	\$2,380	\$196,565	\$98,966	\$97,201	\$0
Brown	\$41,316	\$325,796	\$0	\$40,666	\$0
Carlton	\$58,081	\$82,707	\$2,660	\$47,187	\$0
Carver	\$290,228	\$98,628	\$33,287	\$254,884	\$0
Cass	\$116,394	\$525,045	\$18,963	\$111,459	\$9,295
Chippewa	\$26,774	\$129,052	\$0	\$2,649	\$0
Chisago	\$98,405	\$59,648	\$0	\$85,508	\$0
Clay	\$179,757	\$224,416	\$30,864	\$84,722	\$0
Clearwater	\$20,394	\$102,097	\$720	\$19,060	\$0
Cook	\$176,646	\$43,915	\$0	\$8,935	\$0
Cottonwood	\$132,628	\$61,498	\$0	\$6,260	\$0
Crow Wing	\$131,717	\$47,765	\$17,093	\$198,120	\$5,000
Dakota	\$517,283	\$20,867	\$0	\$729,152	\$0
Dodge	\$25,849	\$215,320	\$0	\$29,699	\$0
Faribault	\$2,093	\$36,055	\$0	\$10,629	\$0
Fillmore	\$10,851	\$95,573	\$0	\$29,118	\$0
Freeborn	\$90,569	\$281,483	\$1,836	\$6,228	\$0
Goodhue	\$311,862	\$127,771	\$0	\$37,771	\$0
Grant	\$0	\$134,747	\$0	\$52,435	\$0
Hennepin	\$1,279,762	\$690,103	\$36,504	\$4,454,933	\$95,325
Houston	\$43,741	\$263,375	\$0	\$3,472	\$0
Hubbard	\$56,440	\$278,167	\$8,637	\$58,070	\$0
Isanti	\$44,011	\$42,538	\$0	\$6,675	\$0
Itasca	\$95,963	\$322,314	\$0	\$38,290	\$0
Jackson	\$28,183	\$21,948	\$0	\$16,313	\$9,300
Kanabec	\$5,760	\$62,210	\$0	\$0	\$0
Kandiyohi	\$189,517	\$414,475	\$0	\$99,006	\$0
Kittson	\$29,876	\$67,779	\$0	\$1,203	\$0
Koochiching	\$81,622	\$88,378	\$6,174	\$22,901	\$0
Lac Qui Parle	\$50,822	\$56,261	\$0	\$1,939	\$0
Lake	\$58,442	\$140,338	\$40,685	\$17,278	\$0
Lake of the Woods	\$1,393	\$111,499	\$772	\$15,456	\$0
Le Sueur	\$29,668	\$53,320	\$0	\$38,044	\$0
Lincoln	\$26,972	\$47,104	\$0	\$1,357	\$0
Lyon	\$33,351	\$259,826	\$0	\$94,390	\$26,519
Mahnomen	\$36,362	\$32,579	\$0	\$11,386	\$0
Marshall	\$21,362	\$106	\$0	\$9,561	\$0
Martin	\$39,620	\$177,573	\$70	\$6,389	\$82
McLeod	\$499,684	\$1,953,743	\$53,707	\$60,638	\$0
Meeker	\$10,593	\$7,583	\$0	\$12,327	\$0

County SCORE Survey Responses

Finances: Expenditures by program area (part 1)

County	Planning & administration	Recycling	Yard waste	HHW and problem materials	Source reduction
Mille Lacs	\$33,000	\$92,567	\$0	\$2,910	\$0
Morrison	\$53,906	\$141,711	\$8,863	\$163,945	\$0
Mower	\$158,293	\$393,738	\$0	\$8,639	\$0
Murray	\$54,731	\$22,423	\$0	\$2,201	\$0
Nicollet	\$31,945	\$204,036	\$0	\$37,904	\$0
Nobles	\$76,587	\$181,504	\$0	\$64,004	\$0
Norman	\$21,520	\$53,441	\$0	\$3,885	\$0
Olmsted	\$39,858	\$300,531	\$161,372	\$353,514	\$103,351
Otter Tail	\$598,277	\$390,185	\$3,420	\$150,475	\$5,722
Pennington	\$65	\$95,836	\$0	\$17,002	\$0
Pine	\$28,719	\$108,467	\$0	\$0	\$0
Pipestone	\$22,381	\$139,164	\$0	\$2,419	\$0
Polk	\$33,674	\$228,693	\$1,600	\$59,177	\$0
Pope/Douglas	\$159,594	\$147,818	\$65,275	\$5,024	\$0
Ramsey	\$1,501,861	\$64,992	\$958,495	\$817,031	\$23,913
Red Lake	\$18,175	\$91,001	\$0	\$8,734	\$0
Redwood	\$190,164	\$134,174	\$7,682	\$13,956	\$3,000
Renville	\$33,010	\$147,080	\$0	\$7,741	\$0
Rice	\$441,478	\$516,598	\$37,000	\$119,461	\$500
Rock	\$43,777	\$60,780	\$1,546	\$8,486	\$600
Roseau	\$20,797	\$0	\$0	\$15,564	\$0
Scott	\$177,657	\$0	\$0	\$107,736	\$0
Sherburne	\$4,121	\$1,684	\$0	\$55,192	\$0
Sibley	\$29,624	\$45,960	\$0	\$28,422	\$0
St. Louis	\$126,264	\$710,777	\$7,175	\$191,175	\$0
Stearns	\$134,922	\$48,606	\$11,976	\$99,694	\$11,976
Steele	\$91,448	\$316,520	\$0	\$7,154	\$0
Stevens	\$39,629	\$32,573	\$950	\$15,884	\$0
Swift	\$162,850	\$44,256	\$1,300	\$9,650	\$700
Todd	\$64,421	\$103,219	\$500	\$63,230	\$0
Traverse	\$49,729	\$25,944	\$0	\$4,449	\$0
Wabasha	\$54,482	\$82,350	\$0	\$23,079	\$0
Wadena	\$3,783	\$68,807	\$3,000	\$12,571	\$0
Waseca	\$55,649	\$140,085	\$531	\$39,182	\$0
Washington	\$215,802	\$27,449	\$1	\$509,985	\$35,616
Watsonwan	\$11,772	\$149,749	\$1,013	\$8,399	\$0
Wilkin	\$38,542	\$91,003	\$3,498	\$32,399	\$1,749
Winona	\$206,665	\$504,155	\$0	\$53,274	\$0
WLSSD	\$1,083,576	\$524,004	\$182,559	\$490,504	\$0
Wright	\$25,941	\$41,793	\$12,165	\$129,830	\$0
Yellow Medicine	\$4,670	\$82,762	\$0	\$1,941	\$0
<hr/>					
Metro Area	\$4,357,454	\$927,241	\$1,109,292	\$7,183,375	\$158,684
Greater Minn.	\$7,523,355	\$14,448,460	\$803,218	\$3,855,562	\$177,794
Minnesota	\$11,880,809	\$15,375,701	\$1,912,509	\$11,038,937	\$336,478

County SCORE Survey Responses

Finances: Expenditures by program area (part 2)

County	Education	Market development	Litter prevention	County grants to other local units of government
Aitkin	\$6,041	\$0	\$0	\$0
Anoka	\$50,864	\$0	\$0	\$673,938
Becker	\$5,950	\$0	\$0	\$57,813
Beltrami	\$0	\$0	\$0	\$0
Benton	\$13,223	\$0	\$0	\$13,628
Big Stone	\$0	\$0	\$0	\$0
Blue Earth	\$27,937	\$0	\$0	\$0
Brown	\$3,824	\$0	\$0	\$0
Carlton	\$4,720	\$0	\$0	\$15,186
Carver	\$18,034	\$0	\$3,557	\$77,376
Cass	\$0	\$0	\$0	\$0
Chippewa	\$268	\$0	\$0	\$0
Chisago	\$1,929	\$0	\$0	\$0
Clay	\$21,315	\$0	\$0	\$0
Clearwater	\$1,676	\$0	\$0	\$0
Cook	\$522	\$0	\$0	\$0
Cottonwood	\$3,373	\$0	\$0	\$0
Crow Wing	\$16,397	\$0	\$54,107	\$197,970
Dakota	\$150,418	\$0	\$0	\$225,626
Dodge	\$27,854	\$900	\$0	\$0
Faribault	\$4,849	\$0	\$0	\$34,742
Fillmore	\$6,979	\$0	\$184	\$0
Freeborn	\$358	\$0	\$0	\$0
Goodhue	\$6,794	\$0	\$0	\$0
Grant	\$0	\$0	\$0	\$0
Hennepin	\$236,125	\$0	\$0	\$2,506,261
Houston	\$1,164	\$0	\$0	\$0
Hubbard	\$15,072	\$0	\$0	\$0
Isanti	\$0	\$0	\$0	\$0
Itasca	\$4,189	\$0	\$0	\$0
Jackson	\$6,338	\$0	\$0	\$0
Kanabec	\$0	\$0	\$231	\$0
Kandiyohi	\$0	\$0	\$0	\$0
Kittson	\$63	\$0	\$0	\$43,653
Koochiching	\$6,749	\$0	\$83	\$0
Lac Qui Parle	\$3,809	\$0	\$0	\$1,500
Lake	\$2,775	\$960	\$0	\$0
Lake of the Woods	\$128	\$0	\$0	\$0
Le Sueur	\$20,413	\$0	\$0	\$13,722
Lincoln	\$1,946	\$0	\$0	\$9,300
Lyon	\$34,028	\$0	\$0	\$0
Mahnomen	\$1,059	\$0	\$0	\$0
Marshall	\$0	\$0	\$0	\$50,697
Martin	\$4,459	\$0	\$50	\$0
McLeod	\$40,387	\$0	\$0	\$477,992
Meeker	\$17,397	\$0	\$0	\$3,156

County SCORE Survey Responses

Finances: Expenditures by program area (part 2)

County	Education	Market development	Litter prevention	County grants to other local units of government
Mille Lacs	\$0	\$0	\$0	\$0
Morrison	\$1,881	\$0	\$0	\$62,984
Mower	\$11,450	\$0	\$0	\$0
Murray	\$4,629	\$0	\$0	\$9,110
Nicollet	\$22,142	\$0	\$0	\$0
Nobles	\$5,998	\$0	\$0	\$0
Norman	\$859	\$0	\$0	\$0
Olmsted	\$172,960	\$0	\$0	\$0
Otter Tail	\$42,868	\$0	\$2,645	\$0
Pennington	\$0	\$0	\$0	\$0
Pine	\$1,000	\$0	\$0	\$0
Pipestone	\$1,618	\$0	\$0	\$0
Polk	\$11,568	\$0	\$0	\$0
Pope/Douglas	\$15,000	\$0	\$0	\$0
Ramsey	\$306,047	\$0	\$0	\$884,438
Red Lake	\$352	\$0	\$0	\$0
Redwood	\$25,932	\$156,393	\$0	\$0
Renville	\$3,496	\$0	\$0	\$0
Rice	\$15,600	\$1,700	\$100	\$0
Rock	\$4,933	\$0	\$0	\$0
Roseau	\$0	\$0	\$0	\$82,316
Scott	\$22,978	\$0	\$0	\$0
Sherburne	\$41,124	\$2,900	\$40,437	\$32,107
Sibley	\$19,163	\$0	\$0	\$49,472
St. Louis	\$38,975	\$0	\$0	\$0
Stearns	\$25,682	\$11,976	\$11,976	\$139,964
Steele	\$10,954	\$0	\$0	\$0
Stevens	\$1,394	\$0	\$0	\$0
Swift	\$3,500	\$0	\$0	\$0
Todd	\$3,823	\$0	\$0	\$0
Traverse	\$436	\$0	\$0	\$4,000
Wabasha	\$0	\$0	\$0	\$0
Wadena	\$89	\$0	\$0	\$0
Waseca	\$2,184	\$0	\$0	\$0
Washington	\$108,467	\$0	\$0	\$438,999
Watonwan	\$3,331	\$0	\$0	\$0
Wilkin	\$479	\$0	\$0	\$0
Winona	\$6,341	\$1,300	\$0	\$0
WLSSD	\$113,585	\$27,291	\$7,628	\$86,181
Wright	\$9,329	\$0	\$0	\$235,445
Yellow Medicine	\$2,174	\$0	\$0	\$0
<hr/>				
Metro Area	\$911,078	\$2,900	\$43,994	\$4,838,744
Greater Minn.	\$920,684	\$200,519	\$77,004	\$1,588,831
Minnesota	\$1,831,762	\$203,419	\$120,998	\$6,427,576

County SCORE Survey Responses

Finances: Balance Sheet

County	Total Revenues	Total Expenditures	CY2003 Balance
Aitkin	\$440,800	\$274,849	\$165,951
Anoka	\$1,743,449	\$1,743,749	(\$300)
Becker	\$425,675	\$425,675	\$0
Beltrami	\$497,278	\$497,278	\$0
Benton	\$98,415	\$93,998	\$4,417
Big Stone	\$159,599	\$113,372	\$46,228
Blue Earth	\$423,049	\$423,049	\$0
Brown	\$389,566	\$411,601	(\$22,035)
Carlton	\$210,541	\$210,541	\$0
Carver	\$775,993	\$775,993	\$0
Cass	\$781,156	\$781,156	\$0
Chippewa	\$158,786	\$158,743	\$44
Chisago	\$320,293	\$245,490	\$74,803
Clay	\$736,129	\$541,074	\$195,056
Clearwater	\$143,947	\$143,947	\$0
Cook	\$230,018	\$230,018	\$0
Cottonwood	\$226,801	\$203,760	\$23,042
Crow Wing	\$668,169	\$668,169	\$0
Dakota	\$1,643,346	\$1,643,346	\$0
Dodge	\$287,898	\$299,623	(\$11,725)
Faribault	\$96,102	\$88,368	\$7,734
Fillmore	\$182,908	\$142,705	\$40,203
Freeborn	\$380,474	\$380,474	\$0
Goodhue	\$419,795	\$484,199	(\$64,404)
Grant	\$179,203	\$187,182	(\$7,979)
Hennepin	\$9,299,013	\$9,299,013	\$0
Houston	\$311,752	\$311,752	\$0
Hubbard	\$416,386	\$416,386	(\$0)
Isanti	\$177,374	\$93,224	\$84,150
Itasca	\$460,756	\$460,756	\$0
Jackson	\$215,777	\$82,082	\$133,695
Kanabec	\$169,454	\$68,201	\$101,253
Kandiyohi	\$702,998	\$702,998	\$0
Kittson	\$142,573	\$142,573	(\$0)
Koochiching	\$205,907	\$205,907	\$0
Lac Qui Parle	\$91,030	\$114,332	(\$23,302)
Lake	\$146,662	\$260,478	(\$113,816)
Lake of the Woods	\$129,248	\$129,248	\$0
Le Sueur	\$155,167	\$155,167	\$0
Lincoln	\$141,519	\$86,679	\$54,840
Lyon	\$448,115	\$448,115	(\$0)
Mahnomen	\$127,028	\$81,386	\$45,643
Marshall	\$81,726	\$81,726	\$0
Martin	\$226,901	\$228,243	(\$1,342)
McLeod	\$3,086,152	\$3,086,152	\$0
Meeker	\$61,358	\$51,055	\$10,303

County SCORE Survey Responses

Finances: Balance Sheet

County	Total Revenues	Total Expenditures	CY2002 Balance
Mille Lacs	\$123,017	\$128,477	(\$5,460)
Morrison	\$433,290	\$433,290	\$0
Mower	\$572,119	\$572,119	\$0
Murray	\$112,053	\$93,093	\$18,959
Nicollet	\$296,026	\$296,026	\$0
Nobles	\$420,918	\$328,093	\$92,825
Norman	\$57,648	\$79,705	(\$22,057)
Olmsted	\$750,947	\$1,131,586	(\$380,639)
Otter Tail	\$1,208,792	\$1,193,592	\$15,200
Pennington	\$112,902	\$112,902	\$0
Pine	\$138,186	\$138,186	\$0
Pipestone	\$165,582	\$165,582	(\$0)
Polk	\$440,699	\$334,711	\$105,988
Pope/Douglas	\$249,855	\$392,711	(\$142,856)
Ramsey	\$4,556,777	\$4,556,777	\$0
Red Lake	\$118,262	\$118,262	\$0
Redwood	\$531,301	\$531,301	\$0
Renville	\$332,290	\$191,326	\$140,964
Rice	\$958,596	\$1,132,437	(\$173,841)
Rock	\$121,241	\$120,122	\$1,119
Roseau	(\$26,365)	\$118,677	(\$145,042)
Scott	\$927,401	\$308,371	\$619,030
Sherburne	\$288,423	\$177,565	\$110,858
Sibley	\$172,641	\$172,641	\$0
St. Louis	\$1,074,366	\$1,074,366	\$0
Stearns	\$591,768	\$496,772	\$94,996
Steele	\$426,076	\$426,076	\$0
Stevens	\$118,865	\$90,430	\$28,434
Swift	\$214,586	\$222,256	(\$7,670)
Todd	\$235,193	\$235,193	(\$0)
Traverse	\$54,485	\$84,558	(\$30,073)
Wabasha	\$61,835	\$159,912	(\$98,076)
Wadena	\$88,249	\$88,249	\$0
Waseca	\$237,631	\$237,631	\$0
Washington	\$1,336,318	\$1,336,319	(\$1)
Watsonwan	\$463,076	\$174,265	\$288,811
Wilkin	\$167,670	\$167,670	\$0
Winona	\$745,406	\$771,735	(\$26,329)
WLSSD	\$1,678,985	\$2,515,328	(\$836,343)
Wright	\$1,200,114	\$454,504	\$745,610
Yellow Medicine	\$128,721	\$91,546	\$37,175
<hr/>			
Metro Area	\$19,643,320	\$19,532,763	\$110,557
Greater Minn.	\$30,658,909	\$29,595,428	\$1,063,480
Minnesota	\$50,302,228	\$49,128,191	\$1,174,037

County SCORE Survey Responses

Paper collected for recycling (tons)

County	Computer paper	Corrugated (OCC)	Magazine/catalog	Mixed paper	Newsprint (ONP)	Office paper	Other paper	Phone book	Total Paper
Aitkin	0	772	0	499	0	0	0	0	1,271
Anoka	5	41,796	513	7,745	13,692	345	16,820	42	80,958
Becker	0	3,303	89	151	276	0	0	7	3,826
Beltrami	0	1,770	146	773	76	80	0	0	2,845
Benton	0	2,046	11,719	383	1,259	211	239	15	15,872
Big Stone	0	166	0	166	0	0	0	0	331
Blue Earth	0	18,193	2,323	5,880	7,272	381	4	89	34,142
Brown	0	2,963	0	2,908	1,160	864	0	0	7,894
Carlton	0	2,194	125	669	892	267	0	0	4,147
Carver	0	3,774	0	5,157	1,161	5,823	0	1	15,916
Cass	0	2,746	52	0	2,068	63	0	0	4,928
Chippewa	0	1,243	48	19	467	1	0	0	1,778
Chisago	100	2,086	0	2,221	0	132	0	50	4,589
Clay	0	2,419	119	4	1,148	277	0	24	3,993
Clearwater	0	226	0	84	0	2	0	2	314
Cook	0	495	104	41	147	0	0	5	792
Cottonwood	0	1,306	16	0	217	54	0	0	1,593
Crow Wing	0	3,261	2,669	981	1,109	13	0	10	8,042
Dakota	0	9,950	1,166	23,338	20,095	3,493	0	799	58,841
Dodge	0	954	65	688	0	0	10	0	1,716
Faribault	0	1,097	0	302	136	10	47	0	1,593
Fillmore	0	224	124	141	312	60	0	0	862
Freeborn	0	6,258	0	1,556	2	0	0	0	7,816
Goodhue	0	3,685	102	1,712	2,789	0	200	0	8,488
Grant	0	158	0	0	124	32	0	0	313
Hennepin	0	35,396	3,932	32,950	49,068	9,477	4,405	278	135,506
Houston	0	724	91	0	300	0	0	0	1,115
Hubbard	0	1,813	0	0	463	87	0	0	2,363
Isanti	0	2,427	37	7	733	168	0	10	3,382
Itasca	32	3,203	100	2,336	1,780	429	0	21	7,901
Jackson	0	1,180	0	0	432	44	0	1	1,657
Kanabec	0	595	0	25	124	1	0	0	745
Kandiyohi	0	4,155	321	201	856	205	229	12	5,980
Kittson	0	105	7	0	95	5	0	0	212
Koochiching	0	881	23	1,106	85	35	0	0	2,130
Lac Qui Parle	0	374	45	0	188	45	0	0	651
Lake	0	476	78	0	213	41	14	8	828
Lake of the Woods	0	92	0	0	0	0	0	0	92
Le Sueur	0	810	0	585	175	37	0	0	1,606
Lincoln	0	220	125	0	0	0	0	0	345
Lyon	0	3,163	1	500	143	3	0	0	3,810
Mahnomen	0	83	5	0	44	0	0	0	132
Marshall	0	114	0	37	114	5	0	1	272
Martin	0	4,332	422	444	857	492	147	0	6,694
McLeod	0	2,421	18	475	1,416	319	0	2	4,652
Meeker	0	1,135	14	126	264	68	0	0	1,606

County SCORE Survey Responses

Paper collected for recycling (tons)

County	Computer paper	Corrugated (OCC)	Magazine/catalog	Mixed paper	Newsprint (ONP)	Office paper	Other paper	Phone book	Total Paper
Mille Lacs	0	446	0	440	0	0	0	0	886
Morrison	0	2,568	69	0	331	1,376	30	1	4,375
Mower	0	10,154	143	0	1,029	457	0	8	11,791
Murray	0	516	12	0	459	16	0	0	1,004
Nicollet	0	1,933	0	7,435	356	656	0	0	10,380
Nobles	0	3,480	445	0	1,041	600	0	0	5,566
Norman	0	92	0	0	53	0	0	0	145
Olmsted	0	10,359	0	161	4,683	2,080	8,371	17	25,671
Otter Tail	0	3,900	31	0	864	245	0	0	5,040
Pennington	0	689	23	0	146	79	0	0	937
Pine	0	554	0	1,020	0	25	0	0	1,599
Pipestone	0	868	0	0	280	91	0	0	1,239
Polk	0	2,240	254	0	443	73	0	0	3,009
Pope/Douglas	0	10,186	59	256	1,585	176	0	0	12,262
Ramsey	0	2,805	2,258	45,688	18,798	75	1,011	122	70,756
Red Lake	0	149	0	119	0	3	0	1	271
Redwood	0	1,816	190	22	354	182	3	0	2,568
Renville	0	536	203	36	755	54	227	0	1,811
Rice	0	8,651	0	0	2,300	0	0	27	10,978
Rock	24	617	0	0	212	12	0	1	866
Roseau	0	1,996	26	0	146	157	0	0	2,325
Scott	0	21,831	211	18,460	3,512	234	285	2	44,535
Sherburne	0	2,138	108	300	2,107	141	312	9	5,115
Sibley	0	642	0	211	51	2	0	0	906
St. Louis	0	7,104	0	4,029	385	46	0	0	11,564
Stearns	9	10,531	8,042	2,169	5,060	749	157	52	26,769
Steele	0	2,299	21	2,778	3	28	312	0	5,440
Stevens	0	362	10	20	182	20	0	4	598
Swift	39	625	60	0	435	106	0	3	1,268
Todd	0	1,576	61	0	161	0	13,346	0	15,144
Traverse	0	112	28	0	86	10	0	0	236
Wabasha	0	3,797	55	0	813	30	0	0	4,695
Wadena	0	332	0	164	0	0	6	1	503
Waseca	0	2,433	90	1,152	355	513	27,586	10	32,139
Washington	0	15,393	508	14,204	17,662	12,544	2	35	60,350
Watsonwan	0	1,484	0	0	1,037	2	0	0	2,523
Wilkin	0	361	25	0	160	22	0	0	568
Winona	0	6,560	194	3,245	760	425	0	0	11,184
WLSSD	0	15,443	176	2,331	6,995	537	1,677	639	27,798
Wright	2	249	90	24	4,125	6	0	0	4,495
Yellow Medicine	0	482	94	0	240	54	16	0	887
<hr/>									
Metro Area	5	111,252	8,485	129,382	122,583	31,898	22,550	1,285	427,441
Greater Minn.	206	223,841	29,599	69,089	67,132	13,494	52,906	1,023	457,289
Minnesota	212	335,093	38,084	198,471	189,714	45,392	75,455	2,309	884,730

County SCORE Survey Responses

Metal collected for recycling (tons)

County	Aluminum	Commingled alum/steel/tin	Other ferrous & non-ferrous	Steel/tin cans	Total Metal
Aitkin	91	0	780	50	921
Anoka	362	485	29,175	999	31,021
Becker	109	0	0	57	166
Beltrami	121	0	1,497	0	1,618
Benton	202	86	6,282	2,561	9,132
Big Stone	55	0	869	9	933
Blue Earth	7,651	3,000	1,526	1,245	13,422
Brown	265	0	2,805	403	3,472
Carlton	185	0	44	137	366
Carver	259	26	3,946	47	4,279
Cass	57	0	112	42	211
Chippewa	10	43	0	50	102
Chisago	145	0	100	193	438
Clay	129	0	7	122	258
Clearwater	40	0	357	125	522
Cook	18	0	496	40	554
Cottonwood	11	0	452	35	498
Crow Wing	122	0	7,658	204	7,984
Dakota	627	9,868	8,131	177	18,803
Dodge	27	0	1,500	55	1,582
Faribault	10	88	154	62	314
Fillmore	36	52	0	81	168
Freeborn	236	4,748	0	460	5,444
Goodhue	303	0	285	55	643
Grant	14	0	167	24	205
Hennepin	4,665	2,193	50,411	2,527	59,796
Houston	156	0	625	57	838
Hubbard	343	0	2,485	62	2,890
Isanti	384	0	92	3,389	3,864
Itasca	100	130	2,100	115	2,445
Jackson	59	0	93	195	347
Kanabec	3	1	194	17	215
Kandiyohi	197	0	0	117	314
Kittson	9	58	77	0	144
Koochiching	81	0	835	24	940
Lac Qui Parle	48	73	44	316	482
Lake	20	0	209	42	271
Lake of the Woods	13	0	330	0	343
Le Sueur	378	1	3,503	232	4,114
Lincoln	0	41	0	0	41
Lyon	153	0	68	50	272
Mahnomen	14	0	52	9	75
Marshall	0	71	175	0	246
Martin	263	1,070	2,614	995	4,942
McLeod	72	61	191	138	463
Meeker	82	29	141	214	465

County SCORE Survey Responses

Metal collected for recycling (tons)

County	Aluminum	Commingled alum/steel/tin	Other ferrous & non-ferrous	Steel/tin cans	Total Metal
Mille Lacs	0	66	0	0	66
Morrison	1	171	1,209	32	1,413
Mower	266	0	20	90	377
Murray	57	51	97	0	205
Nicollet	644	38	1,251	69	2,002
Nobles	131	0	0	134	265
Norman	25	0	480	120	626
Olmsted	238	500	3,772	510	5,019
Otter Tail	424	0	4,916	155	5,495
Pennington	0	763	0	0	763
Pine	0	370	2,548	0	2,918
Pipestone	38	43	27	45	153
Polk	197	0	2,974	138	3,309
Pope/Douglas	179	11	3,372	326	3,887
Ramsey	395	604	32,396	904	34,299
Red Lake	12	0	200	36	248
Redwood	540	0	2,886	61	3,486
Renville	84	0	580	178	842
Rice	232	190	1,396	282	2,100
Rock	41	0	1,279	95	1,415
Roseau	44	0	307	216	567
Scott	752	173	14,505	3,354	18,784
Sherburne	248	83	7,467	2,970	10,768
Sibley	310	0	302	23	634
St. Louis	308	83	36,764	854	38,009
Stearns	1,177	1,347	19,714	9,078	31,317
Steele	116	10	706	121	953
Stevens	71	0	403	133	607
Swift	115	0	59	78	252
Todd	95	0	0	63	158
Traverse	46	16	0	10	72
Wabasha	57	10	74	467	607
Wadena	221	0	522	45	787
Waseca	123	0	1,068	23	1,214
Washington	1,864	313	5,941	915	9,033
Watsonwan	17	0	0	38	54
Wilkin	55	0	61	12	128
Winona	619	0	0	2,278	2,897
WLSSD	580	0	12,864	307	13,751
Wright	229	5	158	818	1,210
Yellow Medicine	12	0	15	66	93
<hr/>					
Metro Area	8,419	13,572	137,468	8,539	167,999
Greater Minn.	20,267	13,398	153,448	32,236	219,349
Minnesota	28,687	26,971	290,915	40,775	387,348

County SCORE Survey Responses

Glass collected for recycling (tons)

County	Food & beverage	Other glass	Total Glass
Aitkin	281	0	281
Anoka	4,573	377	4,950
Becker	1,706	0	1,706
Beltrami	617	54	671
Benton	573	4	577
Big Stone	42	0	42
Blue Earth	780	0	780
Brown	383	0	383
Carlton	786	0	786
Carver	5	0	5
Cass	275	0	275
Chippewa	181	0	181
Chisago	641	0	641
Clay	267	0	267
Clearwater	10	0	10
Cook	175	0	175
Cottonwood	119	0	119
Crow Wing	658	0	658
Dakota	6,995	0	6,995
Dodge	225	338	562
Faribault	156	71	227
Fillmore	332	0	332
Freeborn	1,222	0	1,222
Goodhue	1,418	0	1,418
Grant	112	0	112
Hennepin	19,409	1,105	20,514
Houston	556	0	556
Hubbard	411	0	411
Isanti	188	0	188
Itasca	790	0	790
Jackson	104	0	104
Kanabec	47	0	47
Kandiyohi	323	0	323
Kittson	94	0	94
Koochiching	82	0	82
Lac Qui Parle	126	0	126
Lake	196	0	196
Lake of the Woods	500	0	500
Le Sueur	366	0	366
Lincoln	56	0	56
Lyon	190	0	190
Mahnomen	28	0	28
Marshall	101	0	101
Martin	794	255	1,049
McLeod	792	0	792
Meeker	140	0	140

County SCORE Survey Responses

Glass collected for recycling (tons)

County	Food & beverage	Other glass	Total Glass
Mille Lacs	252	0	252
Morrison	289	0	289
Mower	264	0	264
Murray	170	0	170
Nicollet	383	0	383
Nobles	240	0	240
Norman	40	0	40
Olmsted	1,960	670	2,630
Otter Tail	0	482	482
Pennington	0	0	0
Pine	211	0	211
Pipestone	144	0	144
Polk	1,080	0	1,080
Pope/Douglas	1,433	0	1,433
Ramsey	6,328	0	6,328
Red Lake	87	0	87
Redwood	315	0	315
Renville	639	0	639
Rice	867	3,754	4,621
Rock	130	0	130
Roseau	126	3,655	3,781
Scott	1,365	0	1,365
Sherburne	752	5	757
Sibley	116	0	116
St. Louis	1,263	0	1,263
Stearns	2,376	13	2,389
Steele	532	20,409	20,941
Stevens	129	0	129
Swift	253	0	253
Todd	124	0	124
Traverse	33	0	33
Wabasha	362	0	362
Wadena	0	0	0
Waseca	216	0	216
Washington	3,565	0	3,565
Watonwan	155	0	155
Wilkin	65	0	65
Winona	794	0	794
WLSSD	1,915	0	1,915
Wright	1,190	0	1,190
Yellow Medicine	147	0	147
<hr/>			
Metro Area	41,627	1,487	43,114
Greater Minn.	36,508	29,704	66,212
Minnesota	78,135	31,192	109,326

County SCORE Survey Responses

Plastic collected for recycling (tons)

County	Film plastic	HDPE	Mixed plastic	Other plastic	PET	Polystyrene (PS)	Total Plastics
Aitkin	0	0	52	0	0	0	52
Anoka	31	90	1,357	1,079	20	91	2,667
Becker	0	0	127	0	0	0	127
Beltrami	0	0	0	0	0	0	0
Benton	49	32	181	12	19	0	293
Big Stone	0	0	28	0	0	0	28
Blue Earth	309	77	1,890	0	549	67	2,892
Brown	22	0	681	0	0	0	702
Carlton	0	15	143	0	11	0	169
Carver	0	0	547	0	3	0	550
Cass	0	0	311	0	28	0	339
Chippewa	1	3	0	3	58	99	165
Chisago	2	0	171	0	0	0	173
Clay	0	0	139	0	0	0	139
Clearwater	0	0	2	0	0	0	2
Cook	0	0	43	0	0	0	43
Cottonwood	0	75	44	1	0	0	120
Crow Wing	0	0	378	0	0	0	378
Dakota	33	1	3,617	0	0	0	3,651
Dodge	0	0	44	215	0	0	258
Faribault	15	0	59	0	13	0	87
Fillmore	0	33	0	0	27	0	60
Freeborn	0	0	856	0	0	0	856
Goodhue	0	228	0	0	119	0	347
Grant	0	0	26	0	0	0	26
Hennepin	0	90	14,077	0	81	0	14,248
Houston	0	30	0	1	40	0	71
Hubbard	0	0	77	0	0	0	77
Isanti	7	0	8	0	0	0	15
Itasca	0	25	27	0	22	0	74
Jackson	0	1	45	5	0	0	51
Kanabec	0	0	93	0	0	0	93
Kandiyohi	0	61	0	0	41	0	102
Kittson	0	2	18	0	4	0	23
Koochiching	0	5	0	0	25	0	30
Lac Qui Parle	0	56	17	0	26	0	100
Lake	0	0	36	0	0	0	36
Lake of the Woods	0	0	0	0	0	0	0
Le Sueur	0	0	74	12	0	0	85
Lincoln	0	0	38	0	0	0	38
Lyon	0	0	177	0	0	0	177
Mahnomen	0	0	7	0	0	0	7
Marshall	0	0	25	0	2	0	27
Martin	15	4	728	0	0	1	748
McLeod	0	0	3,910	0	0	194	4,104
Meeker	0	0	49	0	0	0	49

County SCORE Survey Responses

Plastic collected for recycling (tons)

County	Film plastic	HDPE	Mixed plastic	Other plastic	PET	Polystyrene (PS)	Total Plastics
Mille Lacs	0	0	77	0	0	0	77
Morrison	0	0	112	177	0	0	289
Mower	68	57	0	0	33	0	158
Murray	0	2	84	2	0	0	88
Nicollet	86	17	134	0	32	0	269
Nobles	0	93	0	0	77	0	170
Norman	0	0	13	0	0	0	13
Olmsted	0	187	214	0	118	0	520
Otter Tail	0	206	0	0	0	0	206
Pennington	0	0	0	0	0	0	0
Pine	0	0	92	0	0	0	92
Pipestone	0	0	737	0	0	0	737
Polk	0	2	76	0	0	0	78
Pope/Douglas	0	292	129	0	90	0	511
Ramsey	10	0	919	0	0	0	929
Red Lake	0	0	15	0	0	0	15
Redwood	40	15	127	47	5	6	239
Renville	0	0	162	0	0	0	162
Rice	30	147	66	0	105	0	348
Rock	0	38	0	2	41	0	81
Roseau	0	0	46	230	0	0	276
Scott	50	51	402	10	188	0	701
Sherburne	32	19	267	7	13	0	338
Sibley	0	0	18	0	0	0	18
St. Louis	0	102	0	0	106	0	208
Stearns	91	108	655	63	123	232	1,272
Steele	0	0	125	69	0	0	194
Stevens	0	21	0	0	21	0	42
Swift	0	52	0	0	61	0	113
Todd	14	0	18	0	12	0	44
Traverse	0	0	14	0	0	0	14
Wabasha	0	0	133	0	0	0	133
Wadena	0	0	0	0	0	0	0
Waseca	0	33	29	17	38	0	117
Washington	111	10	744	0	8	0	873
Watonwan	0	0	57	0	0	0	57
Wilkin	0	0	10	0	0	0	10
Winona	33	81	244	53	0	43	454
WLSSD	10	376	4	0	111	0	501
Wright	0	0	297	0	8	0	305
Yellow Medicine	0	0	82	0	0	0	82
<hr/>							
Metro Area	217	210	21,527	1,086	124	91	23,254
Greater Minn.	841	2,527	14,670	917	2,155	642	21,753
Minnesota	1,058	2,737	36,197	2,003	2,279	733	45,007

County SCORE Survey Responses

Organics, textiles and other materials collected for recycling (tons)

County	Food waste	Carpet	Textiles	Pallets	Unspecified or Other	Total
Aitkin	0	0	10	0	3	13
Anoka	13,453	0	1,571	5,256	2,304	22,585
Becker	0	0	0	0	0	0
Beltrami	0	0	0	0	0	0
Benton	0	0	0	0	2	2
Big Stone	0	0	0	0	0	0
Blue Earth	0	0	823	17,761	0	18,584
Brown	800	0	0	1,056	180	2,036
Carlton	0	0	0	0	0	0
Carver	11,836	0	6	585	2,737	15,164
Cass	0	0	25	0	3,000	3,025
Chippewa	0	0	0	0	152	152
Chisago	0	0	54	10	0	64
Clay	6,558	0	578	441	2	7,579
Clearwater	0	0	10	0	0	10
Cook	0	0	19	0	20	39
Cottonwood	0	0	0	1,600	48	1,648
Crow Wing	0	0	334	0	14,951	15,285
Dakota	8,535	0	6,998	4,999	39,463	59,995
Dodge	0	0	6	0	52	58
Faribault	375	0	6	0	0	381
Fillmore	0	0	9	0	0	9
Freeborn	0	0	3	0	0	3
Goodhue	300	0	33	0	0	333
Grant	0	0	0	0	0	0
Hennepin	43,687	6	6	8,742	289,595	342,036
Houston	0	0	18	0	0	18
Hubbard	0	0	102	0	0	102
Isanti	119	0	7	4,073	0	4,199
Itasca	0	0	0	1,750	0	1,750
Jackson	0	0	142	2	304	448
Kanabec	0	0	0	6	2	8
Kandiyohi	156	0	0	0	0	156
Kittson	22	0	0	0	4	25
Koochiching	0	0	0	0	0	0
Lac Qui Parle	0	0	0	0	0	0
Lake	0	0	0	0	16	16
Lake of the Woods	0	0	0	0	0	0
Le Sueur	3,500	0	0	57	0	3,557
Lincoln	0	0	9	0	0	9
Lyon	0	0	159	0	3,000	3,159
Mahnomen	0	0	0	0	0	0
Marshall	0	0	0	0	0	0
Martin	0	0	89	3,268	2	3,359
McLeod	0	0	0	633	2,307	2,940
Meeker	17	0	0	662	0	679

County SCORE Survey Responses

Organics, textiles and other materials collected for recycling (tons)

County	Food waste	Carpet	Textiles	Pallets	Unspecified or Other	Total
Mille Lacs	0	0	0	0	0	0
Morrison	0	0	28	1,420	3	1,451
Mower	0	0	62	13,090	0	13,152
Murray	483	0	146	31	46	705
Nicollet	0	0	0	354	0	354
Nobles	0	0	325	80	0	405
Norman	0	0	0	0	0	0
Olmsted	1,803	0	551	0	2	2,356
Otter Tail	16,592	0	166	43	0	16,801
Pennington	0	0	0	0	0	0
Pine	0	0	0	0	12	12
Pipestone	0	0	125	3,200	104	3,429
Polk	2,308	0	0	0	1,176	3,484
Pope/Douglas	0	124	8	0	213	345
Ramsey	15,308	0	1,022	543	145,053	161,926
Red Lake	0	0	8	0	0	8
Redwood	383	20	838	460	3,018	4,720
Renville	890	0	45	0	0	935
Rice	19,175	0	50	700	0	19,925
Rock	0	0	61	4	0	65
Roseau	531	0	0	527	0	1,058
Scott	169	12	19	627	32	860
Sherburne	387	0	0	6,537	330	7,254
Sibley	2,300	0	0	110	0	2,410
St. Louis	0	0	0	0	0	0
Stearns	1,560	0	0	5,097	4,039	10,696
Steele	0	0	14	5,337	826	6,176
Stevens	0	0	0	0	0	0
Swift	0	0	0	0	0	0
Todd	0	0	0	0	0	0
Traverse	0	0	0	0	0	0
Wabasha	5,848	0	2	150	0	6,001
Wadena	0	0	0	0	201	201
Waseca	0	0	214	0	0	214
Washington	2,033	0	20	1,208	4,053	7,315
Watsonwan	0	0	0	0	0	0
Wilkin	0	0	0	0	69	69
Winona	1,209	0	13	1,538	0	2,760
WLSSD	559	0	1,300	2,620	97	4,576
Wright	0	0	0	1	0	1
Yellow Medicine	0	0	0	0	108	108
Metro Area	95,239	6	9,623	27,870	483,535	616,274
Greater Minn.	65,655	156	6,409	66,706	33,991	172,918
Minnesota	160,894	162	16,032	94,577	517,526	789,192

County SCORE Survey Responses

Problem materials (banned) collected for recycling (tons)

County	Anti-freeze	Electronic appliances	Fluorescent & HID lamps	HHW	Latex paint	Major appliances	Used oil	Used oil filters	Vehicle batteries	Waste tires	Total PM
Aitkin	1	15	1	1	4	181	104	8	100	297	711
Anoka	9	92	8	0	0	1,879	251	146	1,922	626	4,934
Becker	0	0	2	18	7	187	25	15	191	62	506
Beltrami	1	25	2	0	0	250	66	19	255	125	743
Benton	2	0	0	1	2	222	469	17	227	74	1,015
Big Stone	0	0	1	0	1	42	39	6	35	34	159
Blue Earth	4	74	5	11	14	650	122	75	1,100	2,100	4,155
Brown	0	9	5	22	5	161	21	13	165	54	456
Carlton	0	0	1	2	4	199	27	15	203	66	518
Carver	2	140	8	197	7	471	63	37	481	157	1,563
Cass	0	4	4	12	6	279	23	13	173	431	944
Chippewa	0	0	0	0	0	78	10	6	80	26	200
Chisago	4	15	1	28	36	279	37	22	285	93	801
Clay	18	8	10	6	16	312	315	29	319	169	1,204
Clearwater	0	0	0	3	1	51	7	4	52	17	135
Cook	0	0	0	0	0	32	15	2	32	11	92
Cottonwood	0	0	5	0	2	72	10	27	74	24	213
Crow Wing	3	32	17	2	13	951	47	33	358	169	1,625
Dakota	118	474	82	79	186	2,254	301	176	2,677	751	7,097
Dodge	0	0	1	8	0	114	15	9	117	47	311
Faribault	2	0	3	1	1	96	13	8	99	32	254
Fillmore	0	0	2	5	20	128	17	10	131	43	356
Freeborn	0	23	1	11	9	242	517	17	213	323	1,355
Goodhue	1	18	6	10	13	271	36	21	277	90	744
Grant	0	3	1	4	3	38	5	3	38	13	107
Hennepin	34	1,485	28	124	514	6,839	912	533	6,996	2,280	19,744
Houston	0	0	2	0	0	275	16	9	123	169	594
Hubbard	0	0	5	2	1	985	25	9	114	340	1,481
Isanti	4	0	4	11	0	1,192	59	17	217	157	1,660
Itasca	2	0	4	0	0	950	37	22	271	88	1,375
Jackson	0	42	3	1	1	67	9	5	69	22	219
Kanabec	0	4	0	0	0	120	18	7	97	232	479
Kandiyohi	0	0	0	0	0	248	33	19	253	83	636
Kittson	0	2	1	1	1	31	4	2	31	10	83
Koochiching	0	0	2	0	1	84	11	7	86	28	219
Lac Qui Parle	0	40	0	0	0	50	25	4	49	16	184
Lake	5	1	1	0	5	67	60	5	69	30	243
Lake of the Woods	0	0	2	4	2	35	74	3	30	85	236
Le Sueur	0	7	3	6	0	160	21	12	164	150	524
Lincoln	0	0	2	3	0	37	21	3	39	29	134
Lyon	0	0	3	0	0	152	20	12	155	51	393
Mahnomen	0	0	0	0	0	39	83	3	34	52	210
Marshall	1	0	2	1	1	60	8	5	61	20	157
Martin	8	335	30	6	6	276	255	12	130	455	1,513
McLeod	0	0	7	60	17	1,400	29	17	220	72	1,822
Meeker	1	0	17	34	4	139	19	11	171	46	442

County SCORE Survey Responses

Problem materials (banned) collected for recycling (tons)

County	Anti-freeze	Electronic appliances	Fluorescent & HID lamps	HHW	Latex paint	Major appliances	Used oil	Used oil filters	Vehicle batteries	Waste tires	Total PM
Mille Lacs	0	0	0	0	0	146	19	11	149	49	374
Morrison	76	4	12	0	7	196	607	15	200	320	1,438
Mower	1	6	6	4	8	234	31	18	239	78	625
Murray	0	1	2	2	1	55	15	4	63	35	178
Nicollet	0	8	10	13	0	185	25	14	190	90	535
Nobles	13	0	10	2	15	124	17	10	127	41	358
Norman	0	0	1	1	3	44	6	3	45	15	118
Olmsted	5	0	1	42	49	792	755	69	868	264	2,845
Otter Tail	0	31	11	60	24	353	47	27	361	118	1,031
Pennington	0	5	5	3	0	82	11	6	84	88	283
Pine	0	0	12	0	0	382	22	13	177	120	726
Pipestone	0	0	0	1	1	58	8	5	59	19	151
Polk	0	0	2	8	2	391	25	15	192	158	792
Pope/Douglas	2	4	78	14	26	272	36	21	278	91	823
Ramsey	0	84	0	0	0	3,092	412	241	3,163	1,031	8,022
Red Lake	0	0	1	1	1	26	7	2	26	15	80
Redwood	42	18	3	6	3	98	230	17	448	717	1,581
Renville	0	2	2	4	3	103	14	8	105	34	275
Rice	12	68	12	6	23	420	48	28	367	120	1,104
Rock	0	0	2	2	1	58	8	5	60	36	171
Roseau	0	8	16	0	2	98	13	8	100	33	278
Scott	147	112	13	95	70	631	84	49	1,927	210	3,338
Sherburne	4	62	2	3	13	449	60	35	459	150	1,236
Sibley	0	4	1	4	0	93	12	7	95	110	325
St. Louis	37	3	10	58	0	1,599	844	40	520	927	4,038
Stearns	0	819	0	0	0	827	637	64	846	1,081	4,273
Steele	0	17	8	4	3	208	28	16	213	69	568
Stevens	0	3	3	5	5	60	8	5	61	20	170
Swift	0	0	3	6	3	70	9	5	72	23	192
Todd	0	0	2	0	2	146	19	11	149	119	449
Traverse	0	0	1	0	1	24	3	2	24	8	63
Wabasha	0	8	1	7	0	133	18	10	136	44	357
Wadena	0	0	0	0	0	225	11	6	84	27	354
Waseca	0	0	2	0	0	117	16	9	120	39	303
Washington	12	0	8	90	144	1,280	171	100	1,310	427	3,541
Watsonwan	0	0	1	0	0	71	9	6	72	24	182
Wilkin	0	0	2	2	0	71	11	8	43	23	160
Winona	0	0	0	19	15	298	40	23	305	99	799
WLSSD	48	214	13	98	60	1,016	95	157	699	228	2,627
Wright	0	17	1	34	46	618	82	48	632	206	1,685
Yellow Medicine	0	0	0	0	0	65	9	5	66	22	166
<hr/>											
Metro Area	179	2,337	137	493	863	16,263	2,168	1,267	17,009	5,421	46,138
Greater Minn.	439	2,010	403	776	569	21,585	6,646	1,329	17,111	12,156	63,025
Minnesota	618	4,347	541	1,268	1,433	37,848	8,814	2,596	34,120	17,577	109,162

County SCORE Survey Responses

Wastes generated (tons)

County	Estimated MSW not collected	Problem mats not collected	MSW to facilities: disposal/processing	Tons collected for recycling	Total tons generated
Aitkin	204	154	7,321	3,250	10,928
Anoka	0	7,899	185,172	147,116	340,186
Becker	273	786	16,902	6,330	24,291
Beltrami	0	975	20,098	5,877	26,950
Benton	2,827	492	19,932	26,889	50,140
Big Stone	1,007	76	2,346	1,493	4,922
Blue Earth	1,469	797	49,903	73,975	126,145
Brown	2,267	677	14,007	14,944	31,894
Carlton	997	836	11,867	5,986	19,686
Carver	294	1,978	43,530	37,475	83,277
Cass	210	443	16,242	9,722	26,617
Chippewa	1,721	321	7,540	2,579	12,162
Chisago	714	1,172	19,894	6,705	28,485
Clay	833	967	26,625	13,440	41,865
Clearwater	42	210	3,711	993	4,956
Cook	30	122	3,638	1,696	5,486
Cottonwood	991	302	5,401	4,191	10,885
Crow Wing	258	1,330	42,241	33,973	77,802
Dakota	0	9,300	243,475	155,382	408,157
Dodge	848	470	8,601	4,488	14,407
Faribault	1,847	391	8,009	2,855	13,103
Fillmore	3,075	537	5,456	1,787	10,854
Freeborn	420	0	24,596	16,697	41,712
Goodhue	453	1,140	23,556	11,973	37,122
Grant	771	157	2,059	764	3,751
Hennepin	0	28,746	1,005,694	591,845	1,626,285
Houston	504	344	6,107	3,192	10,148
Hubbard	0	283	12,905	7,324	20,512
Isanti	2,728	721	23,137	13,308	39,895
Itasca	466	1,045	23,512	14,335	39,358
Jackson	943	281	3,718	2,826	7,768
Kanabec	1,259	243	9,281	1,587	12,370
Kandiyohi	871	1,041	29,145	7,511	38,568
Kittson	107	123	1,707	581	2,518
Koochiching	546	353	7,945	3,402	12,245
Lac Qui Parle	1,679	176	2,724	1,543	6,122
Lake	252	222	5,282	1,590	7,346
Lake of the Woods	17	0	2,385	1,171	3,573
Le Sueur	1,049	576	16,765	10,251	28,642
Lincoln	923	122	2,240	623	3,908
Lyon	854	626	17,948	8,001	27,428
Mahnomen	217	0	1,686	452	2,355
Marshall	378	252	4,760	803	6,192
Martin	974	94	9,597	18,305	28,971
McLeod	3,636	851	24,828	14,772	44,087
Meeker	672	574	9,264	3,381	13,890

County SCORE Survey Responses

Wastes generated (tons)

County	Estimated MSW not collected	Problem mats not collected	MSW to facilities: disposal/processing	Tons collected for recycling	Total tons generated
Mille Lacs	1,679	612	9,498	1,655	13,443
Morrison	378	72	23,289	9,254	32,992
Mower	1,441	981	26,869	26,367	55,657
Murray	965	196	2,654	2,349	6,165
Nicollet	1,070	751	15,245	13,923	30,989
Nobles	1,217	520	10,462	7,004	19,204
Norman	21	181	3,395	943	4,539
Olmsted	534	2,615	88,155	39,042	130,345
Otter Tail	982	1,483	30,793	29,055	62,313
Pennington	1,637	284	12,779	1,983	16,683
Pine	574	586	17,874	5,557	24,591
Pipestone	1,196	244	5,098	5,853	12,392
Polk	180	638	16,200	11,752	28,771
Pope/Douglas	496	1,144	30,345	19,260	51,245
Ramsey	0	12,995	423,945	282,259	719,199
Red Lake	8	99	1,468	708	2,284
Redwood	2,139	56	7,339	12,908	22,443
Renville	2,183	421	7,820	4,663	15,087
Rice	1,343	1,445	37,971	39,076	79,835
Rock	588	226	3,421	2,727	6,961
Roseau	682	411	10,474	8,285	19,852
Scott	33	2,604	59,330	69,583	131,550
Sherburne	1,613	1,886	50,939	25,467	79,904
Sibley	1,553	307	3,991	4,410	10,261
St. Louis	329	557	52,585	55,082	108,553
Stearns	2,931	2,143	77,498	76,715	159,287
Steele	1,091	875	30,190	34,273	66,429
Stevens	407	250	4,647	1,546	6,851
Swift	1,102	295	5,629	2,078	9,104
Todd	2,099	543	9,898	15,919	28,458
Traverse	294	98	1,228	418	2,038
Wabasha	614	558	7,900	12,155	21,226
Wadena	378	323	8,411	1,844	10,955
Waseca	78	489	10,993	34,203	45,764
Washington	0	5,382	112,417	84,676	202,475
Watonwan	1,049	293	6,875	2,971	11,188
Wilkin	840	150	2,201	1,000	4,190
Winona	1,304	1,253	29,604	18,888	51,049
WLSSD	3,652	2,692	67,567	51,167	125,078
Wright	1,469	2,598	46,217	8,885	59,169
Yellow Medicine	1,217	271	3,975	1,483	6,947
<hr/>					
Metro Area	327	68,905	2,073,562	1,368,335	3,511,129
Greater Minn.	80,666	48,824	1,336,378	956,430	2,422,298
Minnesota	80,993	117,729	3,409,940	2,324,765	5,933,427

County SCORE Survey Responses

Recycling rate

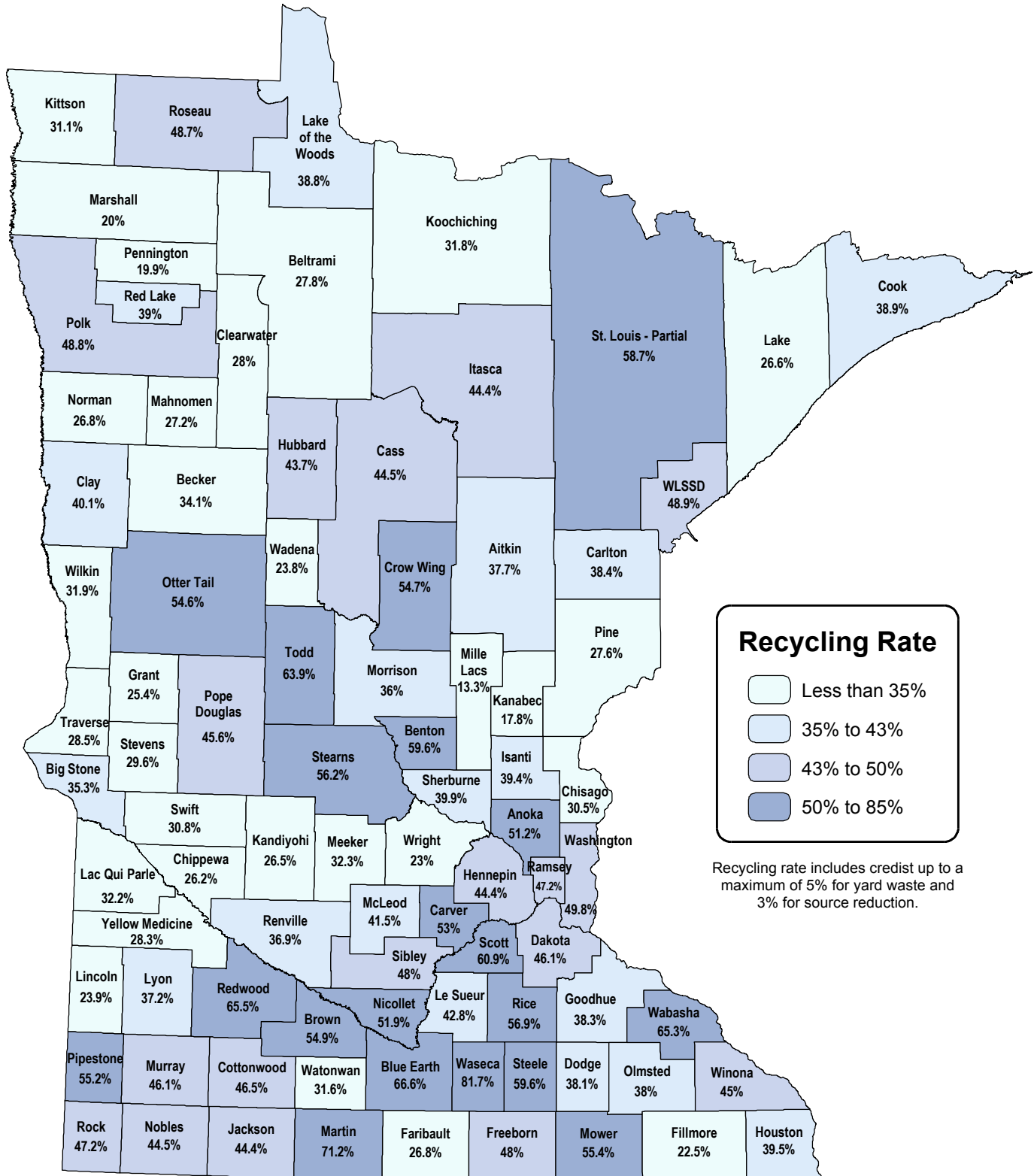
County	Tons collected for recycling	Total MSW generated	MSW collected for recycling	Source reduction credit	Yard waste credit	Recycling rate with credits
Aitkin	3,250	10,928	29.7%	3%	5%	37.7%
Anoka	147,116	340,186	43.2%	3%	5%	51.2%
Becker	6,330	24,291	26.1%	3%	5%	34.1%
Beltrami	5,877	26,950	21.8%	1%	5%	27.8%
Benton	26,889	50,140	53.6%	1%	5%	59.6%
Big Stone	1,493	4,922	30.3%	2%	3%	35.3%
Blue Earth	73,975	126,145	58.6%	3%	5%	66.6%
Brown	14,944	31,894	46.9%	3%	5%	54.9%
Carlton	5,986	19,686	30.4%	3%	5%	38.4%
Carver	37,475	83,277	45.0%	3%	5%	53.0%
Cass	9,722	26,617	36.5%	3%	5%	44.5%
Chippewa	2,579	12,162	21.2%	0%	5%	26.2%
Chisago	6,705	28,485	23.5%	2%	5%	30.5%
Clay	13,440	41,865	32.1%	3%	5%	40.1%
Clearwater	993	4,956	20.0%	3%	5%	28.0%
Cook	1,696	5,486	30.9%	3%	5%	38.9%
Cottonwood	4,191	10,885	38.5%	3%	5%	46.5%
Crow Wing	33,973	77,802	43.7%	6%	5%	54.7%
Dakota	155,382	408,157	38.1%	3%	5%	46.1%
Dodge	4,488	14,407	31.1%	2%	5%	38.1%
Faribault	2,855	13,103	21.8%	0%	5%	26.8%
Fillmore	1,787	10,854	16.5%	1%	5%	22.5%
Freeborn	16,697	41,712	40.0%	3%	5%	48.0%
Goodhue	11,973	37,122	32.3%	1%	5%	38.3%
Grant	764	3,751	20.4%	0%	5%	25.4%
Hennepin	591,845	1,626,285	36.4%	3%	5%	44.4%
Houston	3,192	10,148	31.5%	3%	5%	39.5%
Hubbard	7,324	20,512	35.7%	3%	5%	43.7%
Isanti	13,308	39,895	33.4%	1%	5%	39.4%
Itasca	14,335	39,358	36.4%	3%	5%	44.4%
Jackson	2,826	7,768	36.4%	3%	5%	44.4%
Kanabec	1,587	12,370	12.8%	0%	5%	17.8%
Kandiyohi	7,511	38,568	19.5%	2%	5%	26.5%
Kittson	581	2,518	23.1%	3%	5%	31.1%
Koochiching	3,402	12,245	27.8%	1%	3%	31.8%
Lac Qui Parle	1,543	6,122	25.2%	2%	5%	32.2%
Lake	1,590	7,346	21.6%	2%	3%	26.6%
Lake of the Woods	1,171	3,573	32.8%	1%	5%	38.8%
Le Sueur	10,251	28,642	35.8%	2%	5%	42.8%
Lincoln	623	3,908	15.9%	3%	5%	23.9%
Lyon	8,001	27,428	29.2%	3%	5%	37.2%
Mahnomen	452	2,355	19.2%	3%	5%	27.2%
Marshall	803	6,192	13.0%	2%	5%	20.0%
Martin	18,305	28,971	63.2%	3%	5%	71.2%
McLeod	14,772	44,087	33.5%	3%	5%	41.5%
Meeker	3,381	13,890	24.3%	3%	5%	32.3%

County SCORE Survey Responses

Recycling rate

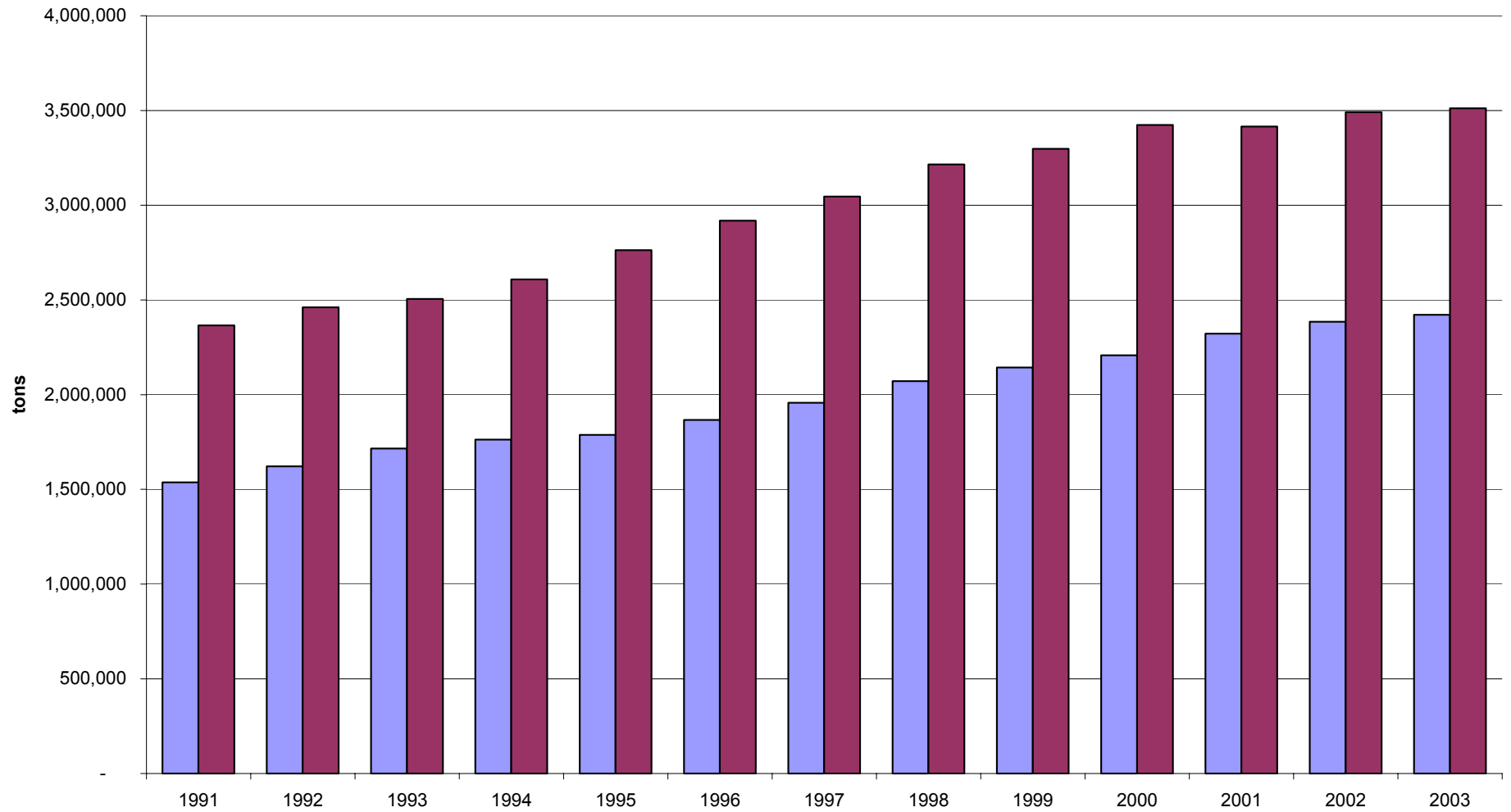
County	Tons collected for recycling	Total MSW generated	MSW collected for recycling	Source reduction credit	Yard waste credit	Recycling rate with credits
Mille Lacs	1,655	13,443	12.3%	1%	0%	13.3%
Morrison	9,254	32,992	28.0%	3%	5%	36.0%
Mower	26,367	55,657	47.4%	3%	5%	55.4%
Murray	2,349	6,165	38.1%	3%	5%	46.1%
Nicollet	13,923	30,989	44.9%	2%	5%	51.9%
Nobles	7,004	19,204	36.5%	3%	5%	44.5%
Norman	943	4,539	20.8%	1%	5%	26.8%
Olmsted	39,042	130,345	30.0%	3%	5%	38.0%
Otter Tail	29,055	62,313	46.6%	3%	5%	54.6%
Pennington	1,983	16,683	11.9%	3%	5%	19.9%
Pine	5,557	24,591	22.6%	2%	3%	27.6%
Pipestone	5,853	12,392	47.2%	3%	5%	55.2%
Polk	11,752	28,771	40.8%	3%	5%	48.8%
Pope/Douglas	19,260	51,245	37.6%	3%	5%	45.6%
Ramsey	282,259	719,199	39.2%	3%	5%	47.2%
Red Lake	708	2,284	31.0%	3%	5%	39.0%
Redwood	12,908	22,443	57.5%	3%	5%	65.5%
Renville	4,663	15,087	30.9%	3%	3%	36.9%
Rice	39,076	79,835	48.9%	3%	5%	56.9%
Rock	2,727	6,961	39.2%	3%	5%	47.2%
Roseau	8,285	19,852	41.7%	2%	5%	48.7%
Scott	69,583	131,550	52.9%	3%	5%	60.9%
Sherburne	25,467	79,904	31.9%	3%	5%	39.9%
Sibley	4,410	10,261	43.0%	2%	3%	48.0%
St. Louis	55,082	108,553	50.7%	3%	5%	58.7%
Stearns	76,715	159,287	48.2%	3%	5%	56.2%
Steele	34,273	66,429	51.6%	3%	5%	59.6%
Stevens	1,546	6,851	22.6%	2%	5%	29.6%
Swift	2,078	9,104	22.8%	3%	5%	30.8%
Todd	15,919	28,458	55.9%	3%	5%	63.9%
Traverse	418	2,038	20.5%	3%	5%	28.5%
Wabasha	12,155	21,226	57.3%	3%	5%	65.3%
Wadena	1,844	10,955	16.8%	2%	5%	23.8%
Waseca	34,203	45,764	74.7%	2%	5%	81.7%
Washington	84,676	202,475	41.8%	3%	5%	49.8%
Watonwan	2,971	11,188	26.6%	0%	5%	31.6%
Wilkin	1,000	4,190	23.9%	3%	5%	31.9%
Winona	18,888	51,049	37.0%	3%	5%	45.0%
WLSSD	51,167	125,078	40.9%	3%	5%	48.9%
Wright	8,885	59,169	15.0%	3%	5%	23.0%
Yellow Medicine	1,483	6,947	21.3%	2%	5%	28.3%
Metro Area	1,368,335	3,511,129	39.0%	3.0%	5.0%	47.0%
Greater Minn.	956,430	2,422,298	39.5%	2.4%	4.8%	46.7%
Minnesota	2,324,765	5,933,427	39.2%	2.5%	4.8%	46.5%

Recycling rates by county, 2003



Minnesota Waste Generation, 1991-2003

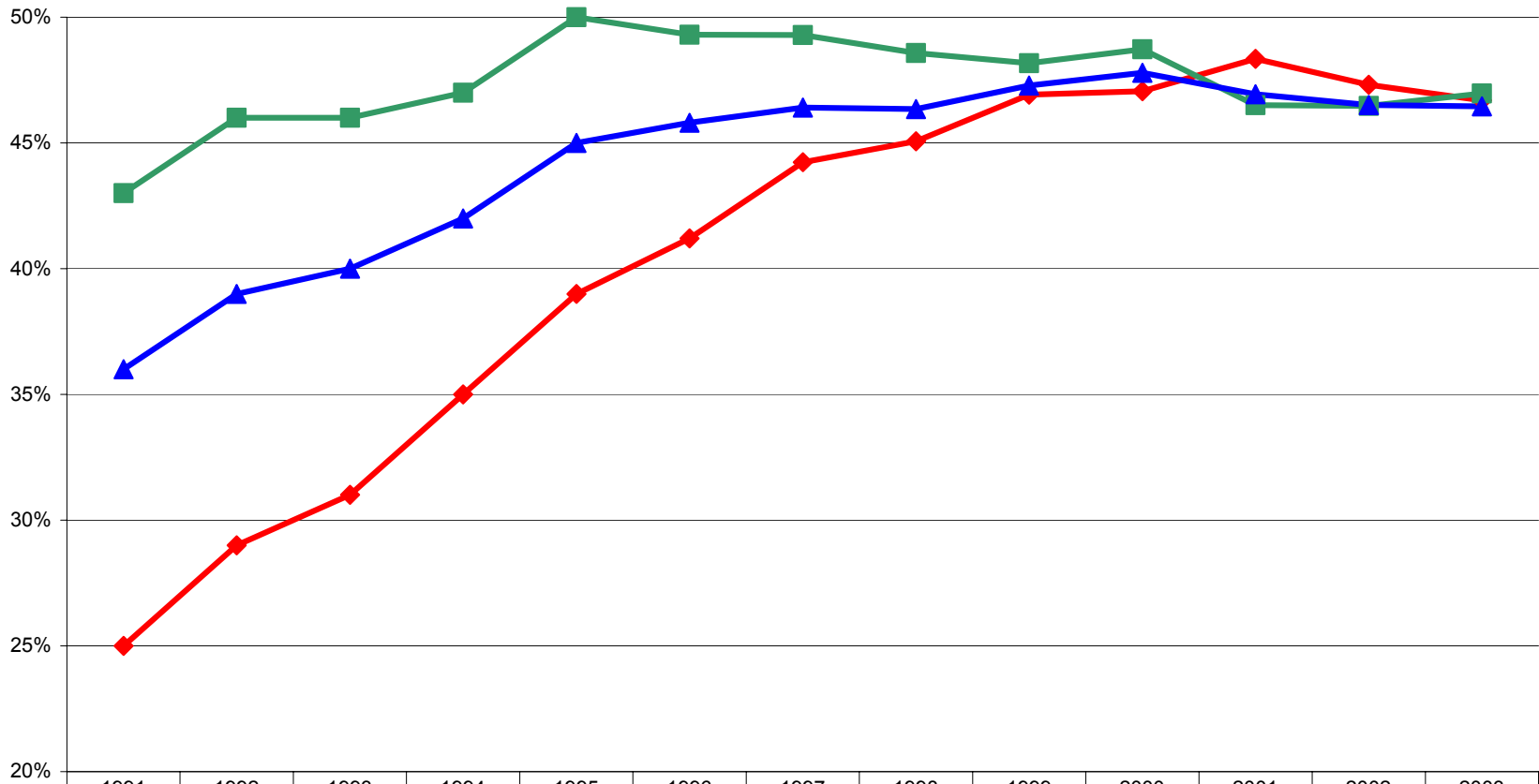
Statewide generation (2003): 5,933,427 tons



	1991	1992	1993	1994	1995	1996	1997	1998	1999	2000	2001	2002	2003
Greater Minn.	1,536,713	1,621,522	1,715,736	1,762,599	1,787,745	1,866,292	1,957,131	2,071,303	2,143,517	2,207,342	2,322,203	2,385,186	2,422,298
Metro	2,365,111	2,461,011	2,504,776	2,607,756	2,762,789	2,918,880	3,045,692	3,215,176	3,297,065	3,422,627	3,415,231	3,490,369	3,511,129
Statewide (sum)	3,903,815	4,084,525	4,222,505	4,372,349	4,552,529	4,787,168	5,002,823	5,286,478	5,440,582	5,629,969	5,737,434	5,875,556	5,933,427

Minnesota recycling rates, 1991-2003

Recycling rate includes credits up to a maximum of 5% for yard waste and 3% for source reduction.



	1991	1992	1993	1994	1995	1996	1997	1998	1999	2000	2001	2002	2003
Greater Minn.	25.0%	29.0%	31.0%	35.0%	39.0%	41.2%	44.2%	45.1%	46.9%	47.1%	48.3%	47.3%	46.7%
Metro Area	43.0%	46.0%	46.0%	47.0%	50.0%	49.3%	49.3%	48.6%	48.2%	48.7%	46.5%	46.5%	47.0%
Statewide	36.0%	39.0%	40.0%	42.0%	45.0%	45.8%	46.4%	46.3%	47.3%	47.8%	46.9%	46.5%	46.5%