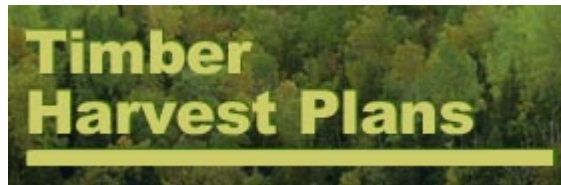


Public Notice  
and  
Involvement  
in  
DNR Annual



Report to the Senate Environment and Natural Resources Committee,  
Senate Environment and Agriculture Budget Division, and the House  
Environment and Natural Resources Policy and Finance Committees

October 2004

Minnesota Department of Natural Resources  
Division of Forestry



# Table of Contents

Introduction .....	1
Annual Timber Harvest Plans .....	2
<i>What Is the DNR Annual Timber Harvest Plan?</i> .....	2
<i>Public Notice and Opportunities for Input</i> .....	2
<i>Public Response</i> .....	3
Annual Plan Additions .....	3
<i>What Are Annual Plan Additions?</i> .....	3
<i>Public Notice and Opportunities for Input</i> .....	3
<i>Activity During Reporting Period</i> .....	4
Subsection Forest Resource Management Plans .....	4
<i>What Is a DNR Subsection Forest Resource Management Plan (SFRMP)?</i> .....	4
<i>Time Frames</i> .....	5
<i>Public Notice and Opportunities for Input</i> .....	6
<i>Public Response</i> .....	6
Calendar of Upcoming DNR Timber Auction Sales.....	7
White Pine Public Involvement .....	7
Appendix.....	A-1

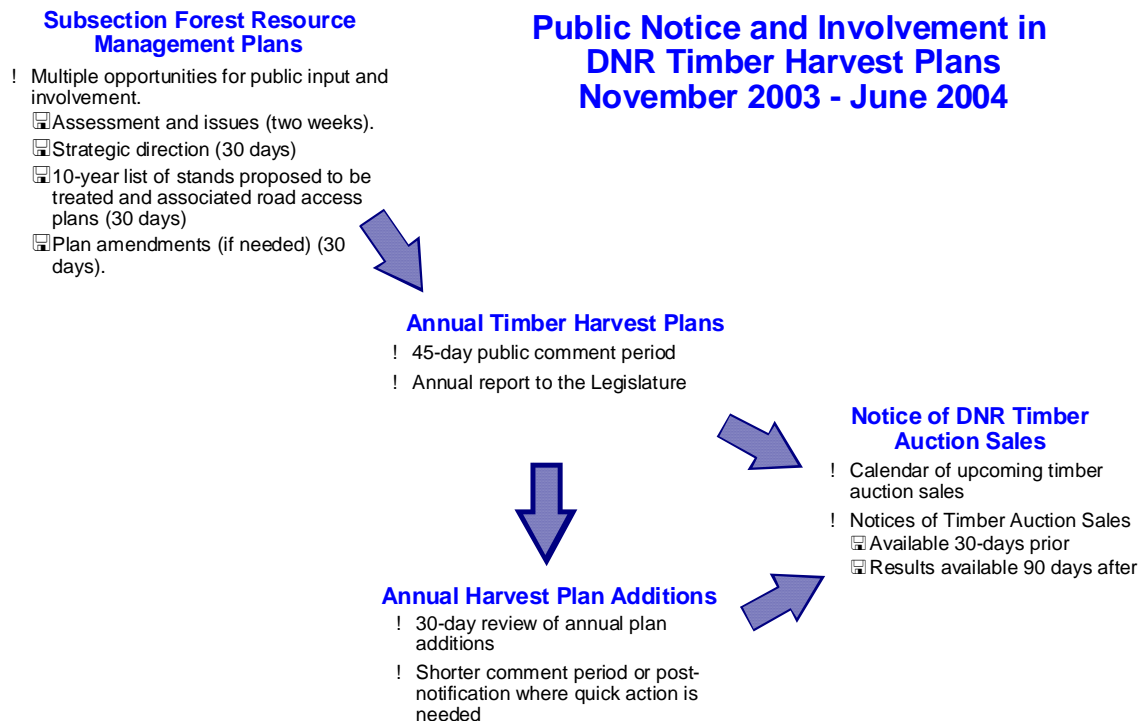
# Introduction

In 2000, the Minnesota Legislature passed into law a requirement that the DNR report to the environment and natural resource policy committees on the public involvement process for DNR proposed annual timber harvest plans:

***Minnesota Statutes, Section 90.042. PUBLIC INVOLVEMENT PROCESS.***

*By July 1 each year, the commissioner must provide a complete description of the public involvement process for timber harvest plans to the chairs of the legislative committees with jurisdiction over natural resources policy and finance. The process must provide public notice and public input in affected areas of proposed annual harvest plans.*

While the legislation deals specifically with DNR annual harvest plans, the DNR has expanded the opportunities for public notice and input on DNR timber harvesting and vegetation management planning to include other venues. The chart below briefly describes the various notice and input opportunities that were available to the public during the past year. The remainder of this report will delve into each of these opportunities in more detail, providing a summary of the degree to which the public took advantage of these opportunities and examples of how the information was provided to the public. This report covers the time period encompassing the FY2005 annual timber harvest planning cycles (i.e., roughly from November 2003 through June 2004).



# Annual Timber Harvest Plans

## ***What Is the DNR Annual Timber Harvest Plan?***

The DNR annual timber harvest plan (AHP) is a work plan that consists of a pool of forest stands or sites on DNR lands from which timber is being considered for sale during the upcoming state fiscal year (July 1 – June 30). Each stand has been assigned a preliminary management prescription (e.g., clear-cut harvest with reserve areas or trees, group selection harvest, thinning, re-inventory, etc.) using direction and criteria from an existing or interim management plan, specific characteristics of the stand, and desired results for the site (e.g., regeneration to a certain species or species mix, retaining certain existing trees/tree species). Prior to being offered for sale, detailed field examinations or surveys are conducted on each site to gather additional information about the site, add site-specific details to the management prescription, and make adjustments to the preliminary AHP management prescription as necessary. Most stands identified in the AHP will be appraised for some type of timber sale. Upon field visit, some stands or portions of them may be found not suitable for harvest; these stands will have their forest inventory data updated, as needed.

The DNR AHPs are derived from existing forest resource management plans, which are based on long-term forest management goals. In cases where previously adopted management plans have expired, interim management plans are developed to cover the period of time anticipated before new management plans are adopted. Interim plans are usually based primarily on the management goals and harvest levels of the previous (e.g., expired) management plan. Public review of stands selected for AHPs from interim management plans is of particular interest to the DNR since these stands are not part of previously adopted/approved management plans. For this reason, the DNR Web site for AHPs identifies stands as being from interim or adopted management plans.

## ***Public Notice and Opportunities for Input***

### **Web Site**

In response to concerns about the availability of information on DNR timber harvest plans, the DNR began developing a Website application in the latter half of 1999 to provide interested individuals the ability to review DNR annual harvest plans online via the Internet. This application became operational early in 2000. Since then, there have been a number of improvements to the Web site application based on comments from users. Users are provided a map of the state identifying townships with stands in the AHP (and whether these stands are from adopted or interim plans), a visual spatial context for stands proposed for harvest using recent satellite imagery, tabular data describing stand characteristics (e.g., age, tree species, volumes, etc.), and a convenient reply/comment form that is completed and returned to the DNR electronically [see the Appendix for examples of the state map (page A-1), a township map (page A-2), stand data (page A-3), and the public comment form (page A-5)].

Individual stand location and data can be reviewed and commented on via the Internet at the annual timber harvest plan Web site: [www.dnr.state.mn.us/forestry/harvesting/plans.html](http://www.dnr.state.mn.us/forestry/harvesting/plans.html) .

Preliminary management prescriptions and planned harvest acres are displayed in the stand summaries found through the Web site.

## **DNR Forestry Offices**

In addition to the Web site application, the AHP is available for review at DNR Area Forestry offices and in St. Paul. Public notices and news releases are distributed to advertise the public review period and AHP availability. The notice is also sent to a mailing list of primary interest groups and others who have requested to be on the AHP mailing list. DNR staff are available at Area Forestry offices with maps, stand-by-stand AHP listings for their area, and a listing of AHP stands in their area that contain white pine. The Appendix includes examples of a news release for AHP public comment and availability (page A-6) and an area stand-by-stand AHP listing (page A-7).

## **Direct Mailings**

In addition to the notice of open houses, summaries of AHPs are sent to the AHP mailing list of primary interest groups and others who request this information. This information usually includes a summary of the AHP by forest type and acres, and a summary of the AHP by management prescription type and acres. Examples are included in the Appendix, pages A-10 and A-11.

## ***Public Response***

### **FY2004**

The FY2004 AHP was available for public review from February 17 through April 26, 2004. Two people provided written comments on two stands via e-mail or letter. There were 3,363 stands on the AHP.

## **Annual Plan Additions**

### ***What Are Annual Plan Additions?***

Annual Plan Additions (APAs) are stands on state-administered forest lands that are proposed to be or have been added to the AHP. These adjustments to AHPs are needed at times because of new information from field surveys, changes in resource conditions, or nearby harvest activities. They are additional stands recommended by field personnel for timber harvest during the current fiscal year (July 1 - June 30).

The DNR intends to keep APAs to a minimum after the AHPs have been made. If possible, the management actions are delayed until the next AHP to provide ample time for notifying and soliciting comments from the public.

### ***Public Notice and Opportunities for Input***

Where quick action is not needed, the public is provided an opportunity to comment on APAs before they are offered for sale. The public is notified through the DNR Web site and the

primary stakeholder mailing list. In most cases, a 30-day comment period will be provided on APAs not requiring quick action. Notices of Annual Plan Additions will be posted on the Web site: [http://www.dnr.state.mn.us/forestry/harvesting/plan\\_additions.html](http://www.dnr.state.mn.us/forestry/harvesting/plan_additions.html) for at least 30 days. An example is included in the Appendix on page A-12.

### **Exceptions to Prior Public Notification**

Where a quick management response is needed on APAs, it will not always be possible to give prior public notification. Some general examples of these situations include:

- § Addressing previously unknown pockets of insect and disease infestations or beaver flooding.
- § Harvesting small acreages adjacent to timber being harvested by other landowners, especially when access is limited.
- § Adjusting forest inventory stand boundaries due to errors in cover typing.
- § Salvaging timber related to blowdowns, wildfires, etc.

Stands needing quick action will be included in the periodic Notice of Annual Plan Additions after information is received from field offices. Comments will be accepted regarding these sites, but management actions may have already occurred by the time the public is notified or has had time to respond.

### ***Activity During Reporting Period***

There were eight APA notices posted/distributed for review related to the FY2004 AHP. There were no public comments submitted on the APA stands during this reporting period.

## **Subsection Forest Resource Management Plans**

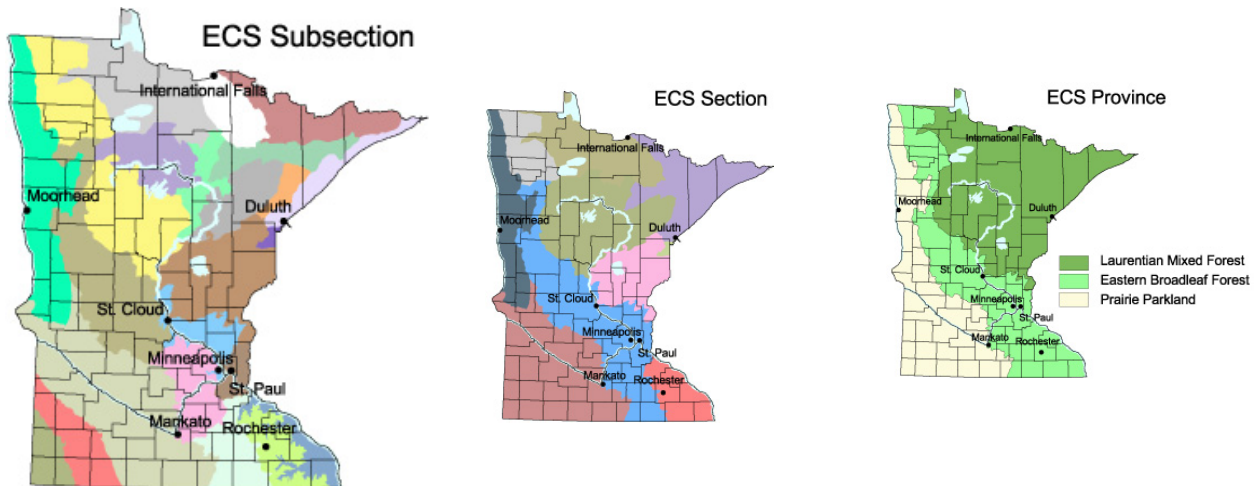
### ***What Is a DNR Subsection Forest Resource Management Plan (SFRMP)?***

For many years the DNR defined its timber harvesting activities in five- or 10-year forest resource management plans developed for each of its 30 administrative forestry areas. Public involvement in the development or review of these timber management plans was limited.

Now, the DNR is developing its forest resource management plans using the subsection level of its ecological classification system (ECS) rather than its administrative areas. It has also developed a more standardized and structured planning process that provides more opportunities for the public to be involved.

SFRMPs differ from annual planned harvest plans in that they produce 10-year lists of DNR forest stands proposed to be treated to achieve long-term forest composition goals. Annual planned harvest lists are then assembled from these 10-year plans

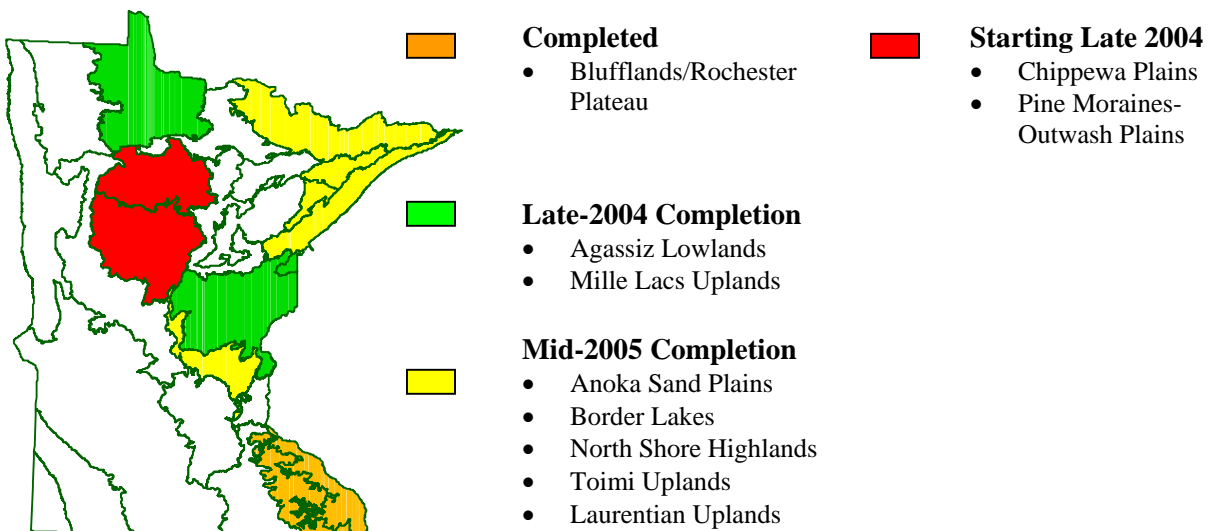
**Figure 1: DNR Ecological Classification System**



**Time Frames**

The SFRMP process is at various forms of completion in the initial group of subsections, which includes Agassiz Lowlands, Border Lakes, Mille Lacs Uplands, Anoka Sand Plains, and Blufflands/Rochester Plateau). The department also initiated the SFRMP process in three additional subsections, North Shore Highlands, Toimi Uplands, and Laurentian Uplands, in July 2002. Two additional subsections, Chippewa Plains and Pine Moraines-Outwash Plains, are scheduled to start late in 2004. The department intends to have two or three subsections underway at a time until all subsection plans are completed. Statewide there are 17 subsections with substantial DNR-administered forest land. Some subsection plans may be prepared jointly via the same planning team and process.

**Figure 2: Current SFRMP Status**



## Public Notice and Opportunities for Input

Figure 3: SFRMP Public Input Opportunities



Public notice and input opportunities are available in several different ways and at several different points during the planning process, including: press releases; direct mailing of notices and document summaries; providing complete documents at DNR offices, local libraries, and via the DNR Web site; and open houses to display information and gather public comments. A statewide mailing list of over 30 interest groups and numerous media outlets, and more localized, regional lists for each subsection plan were initially used to provide notice and elicit interest

in the SFRMP processes. As the SFRMPs developed and public comments/ interest were received, SFRMP mailing lists expanded in some cases up to 150-200 individuals or organizations.

Complete information on the DNR SFRMP process and access to plans in progress is available on the DNR Web site at <http://www.dnr.state.mn.us/forestry/subsection/index.html>.

## Public Response

### Assessment and Issues

There were no public reviews associated with SFRMP Assessment and Issues documents during this reporting period.

### DFFC Goals, Strategies, and Stand-Selection Criteria

There were no public reviews associated with the second, strategic direction-setting stage of the planning process [i.e., desired future forest composition goals (DFFCs), strategies, and stand-selection criteria].

### Looking Ahead

There will be a number of SFRMP public review opportunities during the next reporting period. Three SFRMP plans (Agassiz Lowlands, Mille Lacs Uplands, and Border Lakes) will likely conduct public review on the final stage of the planning process: the results of the seven- or 10-year stands selection and new access needs. The strategic direction document for the North Shore Highlands, Toimi Uplands, and Laurentian Uplands will also be released for public review.



## Calendar of Upcoming DNR Timber Auction Sales

Each year by early December, the Division of Forestry establishes a calendar of public auction sales at which state-owned timber will be sold during the next 12 to 15 months. This calendar is posted on the DNR Web site at <http://www.dnr.state.mn.us/forestry/timbersales/index.html> as well as in local newspapers. An example is included in the Appendix on page A-16. Notices of Sale are posted on the Web site approximately 30 days before the date of each sale and are also available upon request from DNR Forestry Area offices. Notices of Sale list each tract offered, its location, the quantity and appraised price of timber on each tract, and any significant permit conditions and regulations. Results of timber auction sales showing which tracts were sold, their bid (selling) price, and who purchased them are posted approximately five days after the sale and remain available for 90 days following the date of sale.

## White Pine Public Involvement

During the 1997 legislative session, the DNR held discussions with a variety of interest groups to clarify statewide goals for white pine management on DNR-administered lands. These discussions resulted in the DNR making a number of commitments, including a commitment to develop an improved and more effective process of public input into DNR white pine timber management planning. The DNR convened a White Pine Timber Management Planning Public Involvement Process Work Group to develop recommendations for this public involvement process. Recommendations from the work group included:

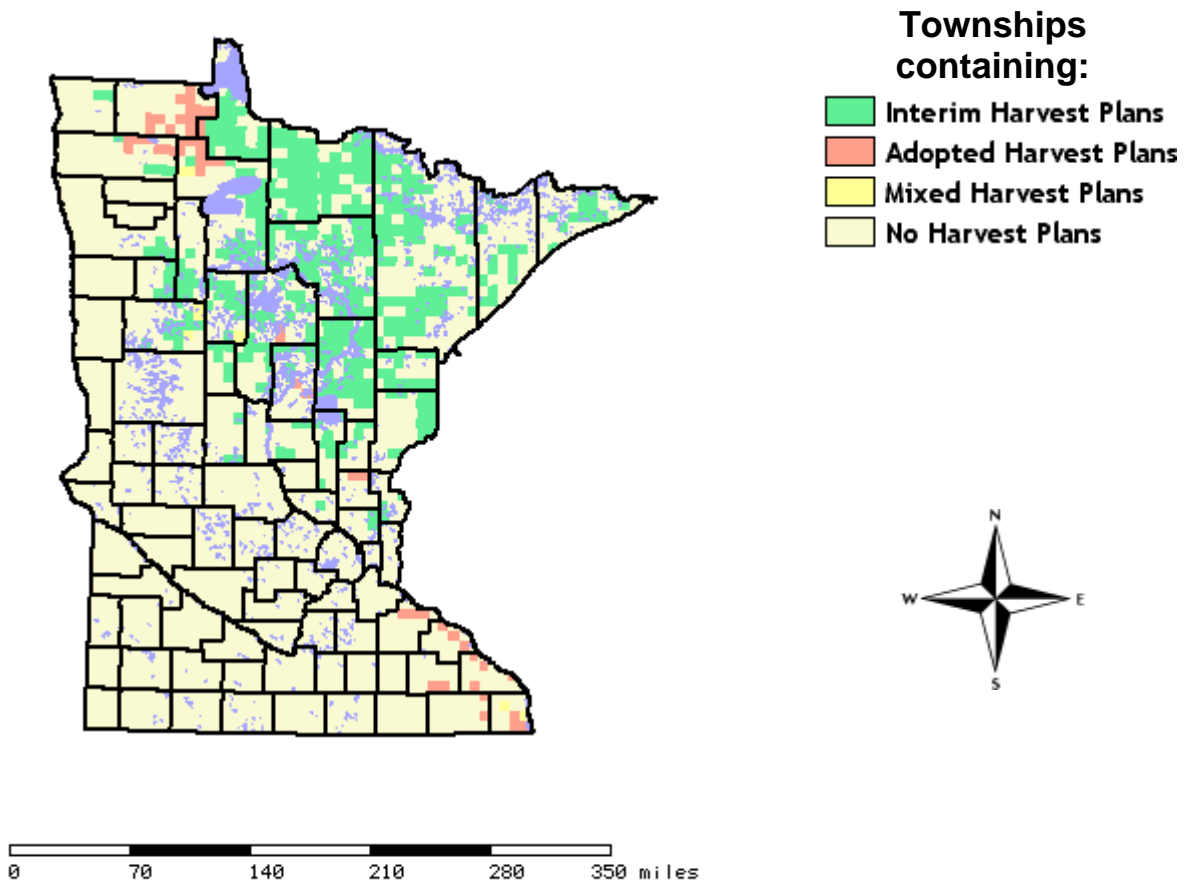
- Involve the public proactively and early in the white pine planning process.
- Focus public participation at the administrative area level, but link to regional and landscape levels.
- Establish more uniformity in the planning process among areas within the DNR.
- Develop a public input process that is effective, doable, non-cumbersome, and timely.
- Provide opportunities for public involvement in multi-year timber management planning.
- Provide forums for public involvement in developing annual white pine management plans.
- Provide the public with timely information on site-implementation schedules.

These DNR commitments related to white pine timber management planning were the DNR's initial foray into re-establishing more visible and consistent opportunities for public input into DNR forest management planning. These efforts also set the stage for future evolutions in public input processes to include forest types in addition to white pine. The DNR will continue public involvement in its white pine management as part of broader public input opportunities that include all DNR forest/timber management planning. The AHP, APA, SFRMP, and Calendar of Upcoming DNR Timber Auction Sales planning and public input processes described above address all forest types on DNR lands, including white pine, and were based to a significant extent on the public input recommendations for white pine public involvement. The DNR continues to highlight proposed management direction and stand-specific management prescriptions affecting white pine on DNR lands through these broader DNR forest/timber management planning processes. Page A-19 of the Appendix provides an example of a listing of AHP stands proposed to be offered for sale that contain white pine. The DNR also continues to

provide the Minnesota Forest Resources Council with periodic updates on the implementation of white pine management recommendations from the White Pine Regenerations Strategies Work Group.

# Appendix

## Statewide Map Showing Townships with Harvest Plans



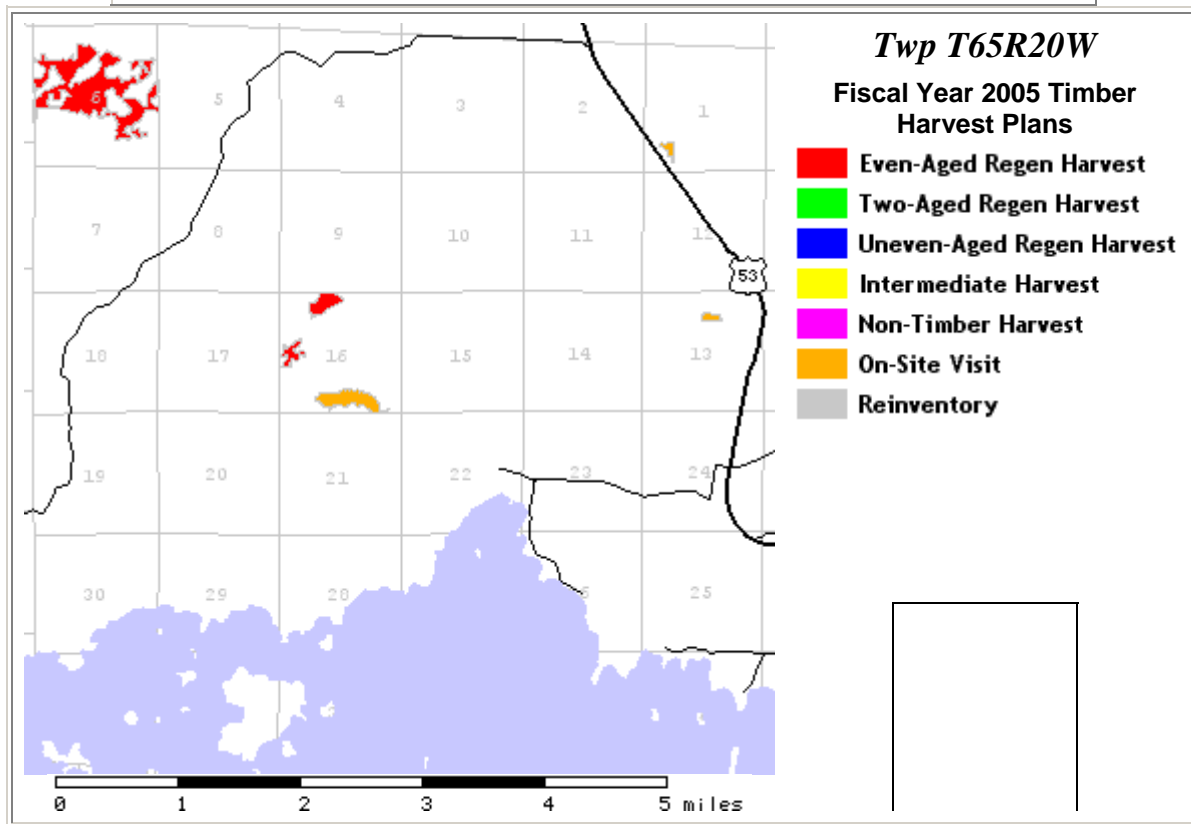
# AHP Section Map Example



Use the map controls below to navigate the map. When you've found a stand for which you'd like to view attributes, turn on the "Get Stand Data" radio button and click in the stand on the map.

### Map Controls

<b>Layers</b> <div style="border: 1px solid black; padding: 2px; margin-bottom: 5px;">Lakes</div> <div style="border: 1px solid black; padding: 2px; margin-bottom: 5px;">Rivers</div> <div style="text-align: center; margin-top: 10px;">Apply</div>	<b>Set Cursor Action</b> <input type="checkbox"/> Get Stand Data <input type="checkbox"/> zoom in <input type="checkbox"/> pan <input type="checkbox"/> zoom out <b>Set Zoom Factor:</b> <input style="width: 30px;" type="text" value="2"/>	<input style="width: 100%; height: 20px;" type="text"/> <input style="width: 100%; height: 20px;" type="text"/> View this area in <input style="width: 100%; height: 20px;" type="text"/>
--	---	--



Contents © 2001 Minnesota Department of Natural Resources. All rights reserved. [Please send us your comments.](#)



# AHP Stand and Prescription Summary Example



## Stand Summary

**Ownership:** State of Minnesota  
**Location:** T65N, R20 W, Section 16, St. Louis County  
**DNR Forestry Area:** Orr  
**Stand ID:** 11628065209

<b>Stand Prescription Information</b>
<p>Prescription: <a href="#">Clearcut- with Reserves</a>                      Affected Acres: 20</p>
<p>The management prescription for this stand is from an <b>interim</b> plan. An interim plan is required for DNR Forestry Areas where the previous Area Timber Management Plan has expired and a new 7-year Subsection Forest Resource Management Plan has not yet been completed. Stands on the interim plan have been selected by DNR Forestry and Wildlife staff based primarily on the management goals and harvest levels of the previous forest management plan.</p> <p>The purpose of listing/displaying stands from the interim plan is to notify the public of the planned forest management activity and allow the public to review the proposed management of the forest stand.</p> <p>Public comments are invited.</p> <p>Comments will be sent directly to the DNR Forestry Area office that administers the state forest land.</p> <div style="text-align: center; margin-top: 20px;"> <input type="button" value="Fill Out Comment"/> </div>

<b>Stand Attributes</b>	
<p><a href="#">Cover Type</a> Aspen</p>	<p><b>Understory Type</b> Balsam Fir</p>
<p>Year of Inventory: 1999                      Age (at inventory): 75 years  <a href="#">Average Diameter Class</a>: 9 to 14.9 inches  <a href="#">Density Class</a>: 12.5-17.5 cords per acre  <a href="#">Basal Area</a>: 90 square feet per acre  <a href="#">Volume</a>: 17 cords per acre  <a href="#">Condition Class</a>: Mature</p>	<p><a href="#">Average Diameter Class</a>: 0 to 0.9 inches  <a href="#">Density class</a>: 1,750-2,250 stems per acre</p>

<b>Stand Composition By Major Tree Species</b>		
<b>Main Species in Type</b>		
<b>Species</b>	<b><u>DBH</u></b>	<b><u>Volume</u></b>
Trembling Aspen	12 inches	10.3 cords per acre
<b>Other Species &gt; 5" DBH</b>		
Paper Birch	6 inches	3 cords per acre
White Spruce	8 inches	1.7 cords per acre
Jack Pine	11 inches	1 cords per acre
Red Maple	6 inches	1 cords per acre
<b>Other Species &lt; 5" DBH</b>		
Balsam Fir	0-1 inches	750-1,250 stems per acre
Red Maple	0-1 inches	750-1,250 stems per acre
Trembling Aspen	0-1 inches	0-250 stems per acre
Paper Birch	0-1 inches	0-250 stems per acre

<b>Site Attributes</b>
<a href="#">Site Index</a> : 57
<a href="#">Physiographic Class</a> : Mesic Site
Topography: Level
Stand Area: 20 acres
<a href="#">Management Status</a> : Normal timber harvest allowed



Contents © 2001 Minnesota Department of Natural Resources.  
All rights reserved. [Please send us your comments.](#)



## Public Comment Form



## Public Comment Form

### Comments for interim plan at stand ID 11628065209

**Location:** St. Louis County, Township 65 North, Range 20 West, Section 16, Stand # 28  
**DNR Forestry Area:** Orr (241)

The management prescription for this stand is from an **interim** plan. An interim plan is required for DNR Forestry Areas where the previous Area Timber Management Plan has expired and a new 7-year Subsection Forest Resource Management Plan has not yet been completed. Stands on the interim plan have been selected by DNR Forestry and Wildlife staff based primarily on the management goals and harvest levels of the previous forest management plan.

The purpose of listing/displaying stands from the interim plan is to notify the public of the planned forest management activity and allow the public to review the proposed management of the forest stand. Public comments are invited.

Comments will be sent to the DNR-Forestry Area office that administers the state forest land. Replies will be made after the public comment period.

**Please type (or cut & paste) your comments into the box below:**

**To assist us in replying to your comments, please provide the following information. Anonymous comments cannot be considered in the management of this forest stand.**  
Asterisks (\*) indicate required fields.

\*First Name:  \*Last Name:   
\*Address:   
Address:   
\*City:  \*State:  \*Zip:   
Telephone: ()  email:

## Example of AHP Review and Open House News Release

DNR NEWS - FOR IMMEDIATE RELEASE

FEBRUARY 17, 2004

*Media contact: Tom Baumann, DNR forestry, St. Paul, (651) 296-4499.*

### **Annual timber harvest plan available for review**

The public is invited to review the annual timber harvest plan for state-administered forest land that has been prepared by the Minnesota Department of Natural Resources (DNR).

The annual timber harvest plan is for fiscal year 2005, which starts July 1, 2004, and ends June 30, 2005, said Tom Baumann, DNR forest resource management section manager. Comments on the planned harvest sites will be accepted through April 26, 2004.

The public has two options for reviewing harvest plans. Proposed harvest locations, management prescriptions and forest inventory information can be viewed on the DNR Web site at [www.dnr.state.mn.us/forestry/harvesting/plans](http://www.dnr.state.mn.us/forestry/harvesting/plans). Comments regarding a proposed harvest can be submitted to the DNR using this Web site.

Those who don't have convenient Internet access or who prefer to review and discuss annual harvest information directly with a forester, a second option is available. They may contact or visit their local DNR area forestry office to discuss the harvest plan or to obtain a copy of the annual harvest plan report for that administrative area.

To view forest inventory maps or aerial photos of state forest lands, which show where harvesting is planned, it is recommended that individuals contact the local area forestry office to ensure that the appropriate forestry staff will be available. Comment forms are available.

For statewide information, contact Gaylord Paulson, DNR-Division of Forestry, 500 Lafayette Road, St. Paul, MN, 55155-4044; phone (651) 205-4571.

Annual harvest plans are derived from multi-year forest management plans, which are based on long-term forest resource management goals. Forestry staff evaluates forest sites from their annual harvest plan for possible timber sales. If the site meets the criteria for a timber sale, the appraised timber will be offered for sale in the upcoming fiscal year. More than 90 percent of the timber volume will be offered for sale through public auction sales.



## Example of Area Stand AHP Listing

### FY2005 Annual Timber Harvest Plan for DNR Forest Lands in the Bagley Forestry Area

<u>Area</u>	<u>Section</u>	<u>Township</u>	<u>Range</u>	<u>EW</u>	<u>Stand No</u>	<u>Cover Type</u>	<u>Plan Acres</u>	<u>Preliminary Stand Prescription</u>	<u>Plan Status</u>
Bagley	22	144	36	9	08	Jack Pine	10	Clearcut with Reserves	interim
Bagley	22	144	36	9	12	Jack Pine	2	Clearcut with Reserves	interim
Bagley	28	144	36	9	23	Cutover Area	9	Re-Inventory	interim
Bagley	10	143	37	9	01	Birch	2	Clearcut with Reserves	interim
Bagley	18	143	37	9	07	Aspen	17	On-site Stand Evaluation	interim
Bagley	20	143	37	9	02	Jack Pine	19	Clearcut with Reserves	interim
Bagley	28	143	37	9	04	Aspen	6	Clearcut with Reserves	interim
Bagley	28	143	37	9	05	Aspen	2	Clearcut with Reserves	interim
Bagley	05	144	37	9	04	Balsam Fir	2	On-site Stand Evaluation	interim
Bagley	06	144	37	9	01	Balsam Fir	7	On-site Stand Evaluation	interim
Bagley	06	144	37	9	05	Jack Pine	15	Clearcut with Reserves	interim
Bagley	07	144	37	9	01	Balsam Fir	2	Clearcut with Reserves	interim
Bagley	07	144	37	9	09	Cutover Area	33	Re-Inventory	interim
Bagley	18	144	37	9	06	Lowland Hardwoods	8	On-site Stand Evaluation	interim
Bagley	18	144	37	9	08	Jack Pine	3	Clearcut with Reserves	interim
Bagley	18	144	37	9	15	Balsam Fir	15	Clearcut with Reserves	interim
Bagley	18	144	37	9	20	Balsam Fir	8	Clearcut with Reserves	interim
Bagley	18	144	37	9	23	Balsam Fir	4	Clearcut with Reserves	interim
Bagley	18	144	37	9	24	Balsam Fir	4	Clearcut with Reserves	interim
Bagley	30	144	37	9	01	Balsam Fir	14	Clearcut with Reserves	interim
Bagley	31	144	37	9	09	Balsam Fir	6	Clearcut with Reserves	interim
Bagley	01	145	37	9	21	Aspen	4	Clearcut with Reserves	interim
Bagley	02	145	37	9	01	Aspen	51	Clearcut with Reserves	interim
Bagley	21	145	37	9	01	Balsam Fir	56	Clearcut with Reserves	interim
Bagley	29	145	37	9	06	Balsam Fir	5	Clearcut with Reserves	interim
Bagley	19	147	37	9	05	Balsam Fir	10	On-site Stand Evaluation	interim
Bagley	03	143	38	9	16	Aspen	6	Re-Inventory	interim
Bagley	04	143	38	9	58	Aspen	10	Re-Inventory	interim
Bagley	04	143	38	9	60	Aspen	3	Re-Inventory	interim
Bagley	05	143	38	9	04	Aspen	10	Re-Inventory	interim
Bagley	05	143	38	9	25	Aspen	7	On-site Stand Evaluation	interim
Bagley	08	143	38	9	01	Aspen	11	On-site Stand Evaluation	interim
Bagley	10	143	38	9	09	Aspen	16	Re-Inventory	interim
Bagley	10	143	38	9	14	Aspen	4	Re-Inventory	interim

<u>Area</u>	<u>Section</u>	<u>Township</u>	<u>Range</u>	<u>EW</u>	<u>Stand No</u>	<u>Cover Type</u>	<u>Plan Acres</u>	<u>Preliminary Stand Prescription</u>	<u>Plan Status</u>
Bagley	13	143	38	9	02	Aspen	19	On-site Stand Evaluation	interim
Bagley	13	143	38	9	05	Aspen	17	On-site Stand Evaluation	interim
Bagley	13	143	38	9	07	Aspen	10	On-site Stand Evaluation	interim
Bagley	14	143	38	9	06	Aspen	4	Clearcut with Reserves	interim
Bagley	14	143	38	9	08	Aspen	7	On-site Stand Evaluation	interim
Bagley	14	143	38	9	11	Aspen	20	Clearcut with Reserves	interim
Bagley	15	143	38	9	23	Birch	5	Re-Inventory	interim
Bagley	15	143	38	9	25	Aspen	5	On-site Stand Evaluation	interim
Bagley	36	143	38	9	01	Norway Pine	15	Commercial Thinning	interim
Bagley	36	143	38	9	05	White Spruce	30	Commercial Thinning	interim
Bagley	36	143	38	9	06	Norway Pine	10	Commercial Thinning	interim
Bagley	36	143	38	9	09	White Spruce	11	Commercial Thinning	interim
Bagley	01	144	38	9	06	Aspen	12	Clearcut with Reserves	interim
Bagley	01	144	38	9	15	Cutover Area	41	Re-Inventory	interim
Bagley	11	144	38	9	02	Tamarack	4	On-site Stand Evaluation	interim
Bagley	11	144	38	9	10	Tamarack	4	On-site Stand Evaluation	interim
Bagley	12	144	38	9	01	Tamarack	51	On-site Stand Evaluation	interim
Bagley	12	144	38	9	04	Aspen	7	Clearcut with Reserves	interim
Bagley	24	145	38	9	06	Aspen	8	Clearcut with Reserves	interim
Bagley	25	146	38	9	07	Aspen	16	Clearcut with Reserves	interim
Bagley	25	146	38	9	13	Balm of Gilead	9	Clearcut with Reserves	interim
Bagley	26	146	38	9	01	Tamarack	32	Seed Tree	interim
Bagley	26	146	38	9	02	Tamarack	9	Seed Tree	interim
Bagley	26	146	38	9	06	Aspen	17	Clearcut with Reserves	interim
Bagley	04	143	39	9	05	Aspen	16	Clearcut with Reserves	interim
Bagley	09	143	39	9	07	Aspen	45	Re-Inventory	interim
Bagley	09	143	39	9	10	Aspen	5	Clearcut with Reserves	interim
Bagley	10	143	39	9	06	Aspen	5	Clearcut with Reserves	interim
Bagley	25	143	39	9	07	Norway Pine	13	Commercial Thinning	interim
Bagley	14	144	39	9	03	Aspen	26	Clearcut with Reserves	interim
Bagley	10	145	39	9	06	Black Spruce, Lowland	10	Clearcut with Reserves	interim
Bagley	10	145	39	9	09	Tamarack	16	Clearcut with Reserves	interim
Bagley	10	145	39	9	10	Black Spruce, Lowland	16	Clearcut with Reserves	interim
Bagley	10	145	39	9	14	Tamarack	5	Clearcut with Reserves	interim
Bagley	13	145	39	9	14	Jack Pine	13	Clearcut with Reserves	interim
Bagley	15	145	39	9	05	Tamarack	9	Clearcut with Reserves	interim
Bagley	15	145	39	9	07	Balsam Fir	8	Clearcut with Reserves	interim

<u>Area</u>	<u>Section</u>	<u>Township</u>	<u>Range</u>	<u>EW</u>	<u>Stand No</u>	<u>Cover Type</u>	<u>Plan Acres</u>	<u>Preliminary Stand Prescription</u>	<u>Plan Status</u>
Bagley	24	145	39	9	03	Northern Hardwoods	50	Shelterwood	interim
Bagley	24	145	39	9	06	Aspen	15	Clearcut with Reserves	interim
Bagley	24	145	39	9	20	Aspen	42	Clearcut with Reserves	interim
Bagley	24	145	39	9	21	Aspen	5	Clearcut with Reserves	interim
Bagley	26	145	39	9	01	Aspen	20	Clearcut with Reserves	interim
Bagley	35	146	39	9	01	Aspen	21	Clearcut with Reserves	interim
Bagley	35	146	39	9	02	Jack Pine	10	Clearcut with Reserves	interim
Bagley	35	146	39	9	05	Aspen	10	Clearcut with Reserves	interim
Bagley	35	146	39	9	07	Aspen	7	On-site Stand Evaluation	interim
Bagley	36	146	39	9	02	Norway Pine	10	Commercial Thinning	interim
Bagley	08	147	39	9	01	Aspen	2	Clearcut with Reserves	interim
Bagley	08	147	39	9	03	Aspen	23	Clearcut with Reserves	interim
Bagley	17	147	39	9	05	Aspen	9	Clearcut with Reserves	interim
Bagley	31	147	39	9	02	Aspen	4	On-site Stand Evaluation	interim
Bagley	35	147	39	9	02	Aspen	4	Clearcut with Reserves	interim
Bagley	01	143	40	9	09	Aspen	30	Clearcut with Reserves	interim
Bagley	01	143	40	9	19	Norway Pine	4	Commercial Thinning	interim
Bagley	01	143	40	9	22	Aspen	7	Clearcut with Reserves	interim
Bagley	02	143	40	9	09	Tamarack	5	Re-Inventory	interim
Bagley	12	143	40	9	01	Northern Hardwoods	35	Group Selection	interim
Bagley	12	143	40	9	24	Tamarack	12	Re-Inventory	interim
Bagley	12	143	40	9	28	Norway Pine	19	Commercial Thinning	interim
Bagley	13	143	40	9	05	Norway Pine	9	Commercial Thinning	interim
Bagley	27	147	40	9	01	Aspen	36	Clearcut with Reserves	interim
Bagley	09	148	40	9	06	Aspen	10	Clearcut with Reserves	interim
Bagley	09	148	40	9	09	Ash	8	On-site Stand Evaluation	interim
Bagley	14	147	41	9	04	Aspen	8	On-site Stand Evaluation	interim
Bagley	14	147	41	9	06	Aspen	5	On-site Stand Evaluation	interim
Bagley	14	147	41	9	07	Aspen	4	On-site Stand Evaluation	interim
<b>Area Total</b>							<b>1355</b>		

## FY2005 Harvest Plan Cover Type Acres (Statewide Summary)

<u>Forest Cover Type</u>	<u>Plan Acres</u>
Ash	2061
Aspen	26941
Birch	4130
Balm of Gilead	2639
Northern Hardwoods	6008
Oak	4057
Central Hardwoods	23
White Pine	367
Norway Pine	3597
Jack Pine	3436
Scotch Pine	13
White Spruce	850
Balsam Fir	2744
Black Spruce, Lowland	4626
Tamarack	4667
Cedar	422
Black Spruce, Upland	251
Stagnant Spruce	31
Stagnant Cedar	57
Offsite Aspen	48
Cutover Area	109
Upland Grass	5
Lowland Brush	22
Lowland Hardwoods	819
Recreation Development	2
Beaver Flooded Area	2
Marsh	21
<b><u>Statewide Total:</u></b>	<b>67948</b>

## FY2005 Harvest Plan Prescription Acres (Statewide Summary)

<u>Prescription Code</u>	<u>Prescription Type</u>	<u>Plan Acres</u>
1100	Even-Aged Regeneration Harvest	5679
1110	Clearcut	32
1111	Clearcut with Reserves	21717
1112	Clearcut - Sprouting	17
1113	Clearcut with Reserves - Sprouting	9707
1116	Clearcut - Natural Seeding	39
1117	Clearcut with Reserves - Natural Seeding	16
1118	Clearcut - Artificial Seeding	171
1119	Clearcut with Reserves - Artificial Seeding	2586
1120	Seed Tree	1395
1123	Seed Tree with Reserves - Interim Cut	5
1130	Shelterwood	819
1140	Salvage - Clearcut	76
1141	Salvage with Reserves - Clearcut	273
1142	Salvage - Clearcut - Windstorm	8
1143	Salvage with Reserves - Clearcut - Windstorm	72
1200	Two-Aged Regeneration Harvest	69
1210	Clearcut with Reserves	130
1212	Clearcut with Reserves - Sprouting	1420
1218	Clearcut with Reserves - Artificial Regeneration	583
1220	Seed Tree with Reserves	64
1230	Shelterwood with Reserves	7
1232	Shelterwood with Reserves - Intermediate Cut	29
1300	Uneven-Aged Regeneration Harvest	1745
1310	Group Selection	234
1315	Group Selection with Reserves	322
1330	Single Tree Selection	245
1800	Intermediate Treatment	4132
1810	Commercial Thinning	6188
1814	Row Thinning - Commercial	432
1820	Selective Thinning - Commercial	520
1840	Salvage Cut - Selective Harvest	14
1850	Sanitation Cut - Selective Harvest	104
1940	Manage for Understory Species	72
1950	Non-Timber Products	21
9100	On-site Stand Evaluation	3207
9101	On-site Evaluation - High Risk or Low Volume Stand	5343
9110	Re-Inventory	455
<b><u>Statewide Total:</u></b>		<b>67948</b>

## Notice of Annual Plan Additions

### Notice of Annual Plan Additions Fiscal Year 2004 Harvest Plan Addition No. 8

This notice is to inform you of additional harvest plans for Fiscal Year 2004 (July 1, 2003 - June 30, 2004). The following stands were not listed on the DNR Annual Timber Harvest Plans for 2004 Web site: <http://www.dnr.state.mn.us/forestry/harvesting/plans.html>. Stand location and data can be viewed through the ForestView Web site: <http://www.ra.dnr.state.mn.us/forestview/>. For information on the upcoming state timber auction sales, see <http://www.dnr.state.mn.us/forestry/timbersales/index.html> or contact the Area Forestry Office where the timber is being sold. *Note: All of the listed sites will be offered for sale before the end of the comment period, therefore, some or all of them may be sold prior to the end of the comment period. Timber sales will not be changed after they are sold.* Harvest Methods and Reasons for Additions descriptions are included at the end of this document in Tables 1 and 2. **Comment period ends June 25, 2004.**

Forestry Area	Stand No.	Legal Description			Acres	Cover Type	Harvest Method	Reason for Addition	Sale Date
		Sec	Twp	Rge					
Blackduck	10	14	154	30	10	Cedar	Clearcut-w/Rsrv-Art Regen	Boundary	6/9/2004
Blackduck	5	14	154	30	6	Lowland Brush	Clearcut-w/Rsrv-Art Regen	Mistyped	6/9/2004
Blackduck	6	14	154	30	5	Black Spruce	Clearcut-w/Rsrv-Art Regen	Boundary - Regen	6/9/2004
Blackduck	5	21	154	30	8	Black Spruce	Clearcut-w/Rsrv-Art Regen	Adjacent	6/9/2004
Blackduck	10	21	154	30	6	Tamarack	Clearcut-w/Rsrv-Art Regen	Adjacent	6/9/2004
Orr	2	1	68	22	11	Black Spruce	Clearcut-Artificial Regen	Dwarf mistletoe	6/7/2004
Orr	10	1	68	22	15	Black Spruce	Clearcut-Artificial Regen	Dwarf mistletoe	6/7/2004
Orr	8	2	68	22	11	Black Spruce	Clearcut-Artificial Regen	Dwarf mistletoe	6/7/2004
Orr	10	2	68	22	11	Black Spruce	Clearcut-Artificial Regen	Dwarf mistletoe	6/7/2004
Orr	1	20	65	18	6	Stagnant Black Spruce	Clearcut-w/Rsrv-Sprouting	Inclusion	6/7/2004
Orr	9	25	65	19	9	Lowland Black Spruce	Clearcut-Artificial Regen	Adjacent	6/7/2004

Forestry Area	Stand No.	Legal Description			Acres	Cover Type	Harvest Method	Reason for Addition	Sale Date
		Sec	Twp	Rge					
Orr	2	15	65	18	6	Jack Pine	Clearcut-w/Rsrv-Art Regen	Adjacent	6/7/2004
Orr	7	21	66	21	8	Aspen	Commercial Thinning	Mistyped	6/7/2004
Orr	9	21	66	21	8	White Pine	Commercial Thinning	WP Blister Rust	6/7/2004
Orr	7	22	66	21	35	Aspen	Clearcut-w/Rsrv-Sprouting	Aspen Decay	6/7/2004
Orr	11	36	65	21	7	Lowland Black Spruce	Clearcut-Artificial Regen	Adjacent	6/7/2004
Orr	12	36	65	21	9	White Pine	Seed Tree	Adjacent	6/7/2004
Orr	20	14	68	20	7	Aspen	Clearcut-w/Rsrv-Sprouting	Windthrow	6/7/2004
Orr	8	19	68	22	8	Lowland Hardwoods	Clearcut-w/Rsrv-Sprouting	Adjacent	6/7/2004
Orr	17	4	65	20	5	Aspen	Clearcut-w/Rsrv-Sprouting	Adjacent	6/7/2004

**If you have comments on any of the listed stands, please respond by June 25, 2004.** This notice is posted on the DNR Web site, Current Notices of Annual Plan Additions: [http://www.dnr.state.mn.us/forestry/harvesting/plan\\_additions.html](http://www.dnr.state.mn.us/forestry/harvesting/plan_additions.html) .

Send comments or questions to Gaylord Paulson, DNR-Division of Forestry, 500 Lafayette Road, St. Paul, MN 55155-4044, e-mail: [Gaylord.Paulson@dnr.state.mn.us](mailto:Gaylord.Paulson@dnr.state.mn.us) , Fax No. 651-296-5954, or call: 651-205-4571. Include the Forestry Area, Stand No., and Legal Description with your comments.

**Table 1. Harvest Methods and Descriptions** Use the most detailed prescription that can be provided at the time of adding the stand.

Harvest Method	Description
<b>Technique: Even-Aged</b>	<b>Harvest methods designed to regenerate a stand with a single age class.</b>
Clearcut	Harvest where very few, if any, trees are left standing in the harvested area.
Clearcut-Artificial Regen	Same as above, with regeneration through artificial methods such as planting or seeding.
Clearcut-Natural Seeding	Same as above, with regeneration through natural seeding from reserved or adjacent trees.
Clearcut-Sprouting	Same as above, with regeneration through suckering or sprouting.
Clearcut-w/Reserves	Harvest where leave trees are left in clumps, strip, or islands that occupy a minimum of 5% of the clearcut harvest unit, or greater than 5 leave trees are left scattered throughout the site.
Clearcut-w/Rsrv-Adv Regen	Same as above, with regeneration primarily through advanced or established regeneration on the site.
Clearcut-w/Rsrv-Art Regen	Same as above, with regeneration through artificial methods such as planting or seeding.

<b>Table 1. Harvest Methods and Descriptions (continued)</b>	
Clearcut-w/Rsrv-Nat Seeding	Same as above, where regeneration will primarily result from natural seeding occurring from leave trees.
Clearcut-w/Rsrv-Sprouting	Same as above, with regeneration primarily from root suckers or stump sprouts.
Salvage-Clearcut	Harvesting essentially all trees from a stand after a windstorm, wildfire, insect and disease damage, or other environmental factors.
Salvage-Clearcut-Environment	Harvesting essentially all trees from a stand after other environmental damage.
Salvage-Clearcut-Insect&Dis	Harvesting essentially all trees from a stand after insect and disease damage.
Salvage-Clearcut-Wildfire	Harvesting essentially all trees from a stand after a wildfire.
Salvage-Clearcut-Windstorm	Harvesting essentially all trees from a stand after a windstorm.
Salvage-w/Rsvr-Clearcut	Harvesting essentially all trees from a stand after a windstorm, wildfire, insect and disease damage, or other environmental factors.
Salvage-w/Rsvr -Clearcut-Env	Harvest after other environmental factor damage where leave trees are left in clumps, strip, or islands that occupy a minimum of 5% of the clearcut harvest unit, or greater than 5 leave trees are left scattered throughout the site.
Salvage-w/Rsvr -Clearcut-I&D	Harvest after insect and disease damage where leave trees are left in clumps, strip, or islands that occupy a minimum of 5% of the clearcut harvest unit, or greater than 5 leave trees are left scattered throughout the site.
Salvage-w/Rsvr -Clearcut-Fire	Harvest after wildfire damage where leave trees are left in clumps, strip, or islands that occupy a minimum of 5% of the clearcut harvest unit, or greater than 5 leave trees are left scattered throughout the site.
Salvage-w/Rsvr -Clearcut-Wind	Harvest after wind damage where leave trees are left in clumps, strip, or islands that occupy a minimum of 5% of the clearcut harvest unit, or greater than 5 leave trees are left scattered throughout the site.
Sanitation-Clearcut	Harvest of essentially all trees from a stand to stop or reduce actual or anticipated spread of insects or disease.
Sanitation-w/Rsvr-Clearcut	Harvest to stop or reduce actual or anticipated spread of insects or disease where leave trees are left in clumps, strip, or islands that occupy a minimum of 5% of the clearcut harvest unit, or greater than 5 leave trees are left scattered throughout the site.
Seed Tree	Harvesting of most trees, but scattered trees or clumps are retained for seed production to regenerate the harvested site.
Seed Tree-Interim Cut	The initial harvest(s) from which seed trees are left standing.
Seed Tree-w/Rsrv	Harvesting of most trees, but scattered trees or clumps are retained for seed production to regenerate the harvested site where leave trees are left in clumps, strip, or islands that occupy a minimum of 5% of the clearcut harvest unit, or greater than 5 leave trees are left scattered throughout the site.
Seed Tree-w/Rsrv-Final Hv	Same as Seed Tree-Final Harvest, but reserve trees are left standing after final harvest.
Seed Tree-w/Rsrv-Intrm Cut	Same as Seed Tree-Interim Cut, but reserve trees will be left standing after the interim and final harvest.
Shelterwood	Harvesting of most trees but leaving enough to provide sufficient shade to provide a moderated environment for the desired species to regenerate from seed and grow in the understory.
Shelterwood-Final Harvest	Final harvest of most or all of the shelter trees to release the established regenerating trees.
Shelterwood-Interim Cut	The harvest(s) prior to final removal of the original overstory trees.
Shelterwood-w/Rsrv	Same as Shelterwood, but leave trees are left in clumps, strip, or islands that occupy a minimum of 5% of the



	clearcut harvest unit, or greater than 5 leave trees are left scattered throughout the site.
Shelterwood-w/Rsrv-Final Hv	Same as above, but leave trees are retained after the final shelterwood harvest.
Shelterwood-w/Rsrv-Intrm Cut	Same as above, but leave trees are retained after the interim shelterwood harvests.
<b>Technique: Two-Aged</b>	<b>Harvest methods designed to maintain and regenerate a stand with two age classes.</b>
Clearcut-w/Rsrv	Clearcut harvest with reserves designed to maintain and regenerate a stand with two age classes.
Clearcut-w/Rsrv-Adv Regen	Same as above, with regeneration primarily through advanced or established regeneration on the site.
Clearcut-w/Rsrv-Art Regen	Same as above, with regeneration through artificial methods such as planting or seeding.
Clearcut-w/Rsrv-Nat Seeding	Same as above, where regeneration will primarily result from natural seeding occurring from leave trees.
Clearcut-w/Rsrv-Sprouting	Same as above, with regeneration primarily from root suckers or stump sprouts.
Seed Tree-w/Rsrv	A seed tree harvest in which some or all of the seed trees are retained after regeneration has been established to attain goals other than regeneration.
Seed Tree-w/Rsrv-Final Hv	Same as Seed Tree-Final Harvest, but leave trees are left standing after final harvest.
Seed Tree-w/Rsrv-Intrm Cut	Same as Seed Tree-Interim Cut, but leave trees will be left standing after the interim and final harvest.
Shelterwood-w/Rsrv	Some or all of the shelter trees are retained well beyond the normal period of retention to attain goals other than regeneration.
Shelterwood-w/Rsrv-Final Hv	Same as above, but leave trees are left standing after the final harvest.
Shelterwood-w/Rsrv-Intrm Cut	Same as above, but leave trees are left standing after the interim shelterwood harvests.
<b>Technique: Uneven-aged</b>	<b>Harvest methods designed to maintain an uneven-aged stand of trees with three or more distinct age classes, either mixed throughout or in small groups.</b>
Group Selection	Small groups of trees are harvested from the stand to create new age classes in small groups in uneven-aged managed stands.
Group Selection-Salvage	Salvage harvest in a stand where small groups of trees are harvested because of windstorm, wildfire, or insects, disease, or animal damage and an uneven-aged stand structure is to be maintained.
Group Selection-w/Rsrv	A variant of a group selection system in which some trees within the group are not cut to attain goals other than regeneration within the group. The remaining stand should include a minimum of 6 cavity trees, potential cavity trees and/or snags per acres.
Single Tree Selection	Individual trees of all size classes are harvested more or less uniformly throughout the stand to create a new age-class in the stand.
<b>Table1. Harvest Methods and Descriptions (continued)</b>	
<b>Technique: Commercial Thin</b>	<b>Harvest to reduce stand density of trees primarily to improve growth, quality, vigor, or composition of the stand while generating revenue from the sale of the wood products.</b>
Commercial Thinning	Thinning harvest that will generate revenue from sale of wood products. Method, i.e., row, strip or selective thinning, not specified.
Row Thinning	Harvest of selected rows of a plantation.
Strip Thinning	Harvest of strips in a natural stand.
Selective Thinning	Harvest of selected trees (often marked) from a stand.
Salvage Cut-Selective Harvest	Selective harvest of dead, dying, or damaged trees due to injurious agents other than competition.
Sanitation Cut-Selective Harvest	Selective harvest of trees to improve stand health by stopping or reducing actual or anticipated spread of insects or disease.

<b>Technique: Decorative Trees</b>	
Decorative Trees	Decorative tree (e.g., Christmas tree) harvest. Small trees or treetops.
Boughs	Bough harvest.

**Table 2. Reasons for Annual Plan Additions** – Select the primary (one) reason for adding the stand. High risk refers to stands needing immediate treatment due to a high level of insect, disease, animal, or environmental damage, or for controlling the spread of insects or disease.

<b>Reason</b>	<b>Description/Example</b>
<b>Insects</b>	
Bark Beetles	Bark beetle control or salvage of dead or dying trees caused by beetles.
Spruce Budworm	Heavy defoliation or mortality caused by spruce budworms.
Jack Pine Budworm	Heavy defoliation or mortality caused by jack pine budworms.
Defoliators	Other defoliators making the stand high risk for significant damage or mortality.
Other Insects	Other insect damage that makes the stand high risk for significant loss. <i>Identify insect, e.g., two-lined chestnut borer, in Reason column.</i>
<b>Diseases</b>	
WP Blister Rust	Salvage of white pine blister rust infected trees.
Oak Mortality	Oak wilt or other oak mortality from disease.
Dwarf Mistletoe	Dwarf mistletoe disease control.
Hypoxylon Canker	Hypoxylon canker damage making the stand high risk.
Aspen Decay	Phellinus or white trunk rot damage making the stand high risk.
Hypoxylon & Decay	Combination of two above.
Heart Rot	Heart rot damage making the stand high risk.
Birch Decline	High risk due to birch decline.
Hardwood Cankers	Canker damage making the stand high risk.
Other Diseases	Other diseases making the stand high risk for loss or spread of disease. <i>Identify disease in Reason column.</i>

<b>Table 2. Reasons for Annual Plan Additions (continued)</b>	
<b>Animals</b>	
Beaver	Flooding caused by beaver or beaver damaged trees.
Porcupine	Salvage of trees due to heavy porcupine damage.
<b>Environment</b>	
Windthrow	Trees tipped over with roots still attached.
Drought	Salvage of trees damaged by drought.
Stem Breakage	Trees broken off with roots still in the ground caused by wind, snow, or ice.
Fire	Salvage of trees damaged by wildfire.
Flooding	Flooding damage, other than that caused by beaver dams.

Exposure	High risk of windthrow or stem breakage because of exposure caused by other adjacent harvest activities.
<b>Inventory</b>	
Boundary	Stand boundary was not correct in the forest inventory
Mistyped	Stand was classified incorrectly in the forest inventory and should be harvested now.
Inclusion	Small patch or clump of trees located in a larger stand that is different than the cover type that should be harvested in conjunction with other harvest in the area.
<b>Location</b>	
Adjacent	Timber near or adjacent to a stand on the annual plan or other ownership harvest area that should be harvested now.
Access	Limited or difficult access to a stand in need of harvest and other harvest is occurring in the area now, e.g., a winter road is open to a remote area. Avoid repeat entry in near future.
Cooperation	Cooperating with adjacent landowner (federal, county, tribal, or private) to harvest an area to meet forest management objectives across ownerships.
<b>Other</b>	
Advanced Decline	Multiple reasons such as disease, insects, rot, dead tops, windthrow, and breakage in old stands. Stand is in very poor condition.
Density	Over-stocked stand that needs thinning to reduce stand density to enhance growth, quality, vigor, and composition of the stand.
Seed Crop	Timing of shelterwood or seed tree harvest in conjunction with a good seed crop.
Wildlife Habitat	Request from wildlife staff to harvest a stand for wildlife habitat management.
Ecological	Harvest/removal of non-native tree species or for other ecological reasons.
Market	New or increased demand for a species where markets were limited in the past and the allowable harvest in the plan has not been sold in previous years.
Substitution	Substituting a stand in more need of harvest than the one on the current annual plan or for other reasons.
Research	Harvest requested as part of a research project.
Other	Include explanation at the bottom of the annual plan addition table.

## 2005 Timber Sales Calendar

Notices of Sale become available approximately 30 days before the date of each sale, and can be viewed by clicking on an active link for an upcoming sale in the Sale Name column below.

Results of timber auction sales showing which tracts were sold, their bid (selling) price and who purchased them are posted approximately 5 days after the sale and remain available for ninety days following the date of sale. Click on an active link in the Sale Name column below to display the detailed results for sales held within the last ninety days.

DATE	SALE #	<a href="#">AUCTION TYPE *</a>	SALE NAME	TIME	LOCATION
Jan 07	1	Regular	Goodhue and Wabasha Co.	10:00 A.M.	Lake City Area DNR Forestry Office
Jan 11	1	Intermediate	Park Rapids - Detroit Lakes Areas	3:00 P.M.	Hubbard County Courthouse
Jan 26	1	Regular	Sandstone Area	10:00 A.M.	Rutledge City Hall
Jan 26	2	Intermediate	Sandstone Area	11:00 A.M.	Rutledge City Hall
Jan 28	1	Intermediate	Bemidji Area	9:30 A.M.	Bemidji Area DNR Forestry Office
Feb 11	1	Regular	Winona, Houston and Fillmore Counties	10:00 A.M.	Rushford Fire Hall
Mar 28	1	Regular	Goodhue and Wabasha Counties	10:00 A.M.	Lake City Area DNR Forestry Office
Apr 14	1	Intermediate	Bagley Area	9:00 A.M.	Bagley Area DNR Forestry Office
Apr 14	2	Regular	Cambridge Area	10:00 A.M.	Cambridge Area Forestry Office
Apr 15	1	Regular	Winona, Houston, Fillmore Counties	10:00 A.M.	Rushford Fire Hall
Apr 25	1	Regular	Two Harbors Area (West Half)	10:00 A.M.	Two Harbors DNR Office
May 09	1	Regular	Two Harbors Area (East Half)	10:00 A.M.	Cook County Courthouse
May 16	1	Regular	Aitkin Area	8:00 A.M.	Long Lake Cons. Ctr.

May 16	2	Intermediate	Aitkin Area	9:00 A.M.	Long Lake Cons. Ctr.
May 17	1	Regular	Park Rapids - Detroit Lakes Areas	3:00 P.M.	Park Rapids Envir. Ed. Bldg.
May 25	1	Regular	Hibbing Area	9:30 A.M.	Iron World, Chisholm
May 25	2	Intermediate	Hibbing Area	10:30 A.M.	Iron World, Chisholm
May 25	3	Regular	Brainerd Area	10:00 A.M.	Brainerd Area DNR Forestry Office
May 25	4	Intermediate	Brainerd Area	11:00 A.M.	Brainerd Area DNR Forestry Office
Jun 02	1	Intermediate	Littlefork Area	9:30 A.M.	Big Falls Community Bldg.
Jun 02	2	Regular	Littlefork Area	10:30 A.M.	Big Falls Community Bldg.
Jun 03	1	Regular	Backus Area	10:00 A.M.	Backus City Hall
Jun 03	2	Intermediate	Backus Area	10:30 A.M.	Backus City Hall
Jun 07	1	Regular	Baudette Area	9:00 A.M.	Baudette Area DNR Forestry Office
Jun 07	2	Intermediate	Baudette Area	9:30 A.M.	Baudette Area DNR Forestry Office
Jun 07	3	Regular	Orr and Tower Areas	9:00 A.M.	Orr City Hall
Jun 07	4	Intermediate	Orr and Tower Areas	9:30 A.M.	Orr City Hall
Jun 08	1	Regular	Deer River and Effie Areas	9:30 A.M.	Bigfork Village Hall
Jun 08	2	Intermediate	Deer River and Effie Areas	10:30 A.M.	Bigfork Village Hall
Jun 09	1	Regular	Warroad Area	9:30 A.M.	Grygla Community Center
Jun 09	2	Intermediate	Warroad Area	10:00 A.M.	Grygla Community

					Center
Jun 15	1	Regular	Cloquet Area	9:00 A.M.	Cloquet Area DNR Forestry Office
Jun 15	2	Intermediate	Cloquet Area	9:30 A.M.	Cloquet Area DNR Forestry Office
Jun 16	1	Regular	Marked Hardwoods - Aitkin and Sandstone Areas	10:00 A.M.	McGrath Comm. Ctr.
Jun 22	1	Regular	Blackduck Area	9:00 A.M.	Blackduck Senior Center
Jun 22	2	Intermediate	Blackduck Area	9:30 A.M.	Blackduck Senior Center
Jun 29	1	Regular	Sandstone Area	10:00 A.M.	Rutledge City Hall
Jun 29	2	Intermediate	Sandstone Area	11:00 A.M.	Rutledge City Hall

\* There are two auction types:

- **Regular** auctions offer up to 6,000 cords per tract, last up to 5 years in length, and are open to all purchasers.
- **Intermediate** auctions offer up to 3,000 cords per tract, last up to 5 years in length, and are open only to individuals and to firms with 20 or fewer employees. These are small business set-aside sales.

## List of Stands with a White Pine Component FY2004 Harvest Plan

<u>Area Name</u>	<u>Sec</u>	<u>Stand</u>		<u>Rge</u>	<u>Stand ID</u>	<u>Cover Type</u>	<u>Preliminary Stand Prescription</u>	<u>Acres</u>
		<u>No.</u>	<u>Twp</u>					
Aitkin	16	3	45	26	11603045269	Birch	Even-Aged Regeneration Harvest	53
Aitkin	9	14	45	26	10914045269	White Pine	Intermediate Treatment	6
Aitkin	21	15	50	23	12115050239	Northern Hardwoods	Intermediate Treatment	33
Aitkin	21	22	50	23	12122050239	Northern Hardwoods	Intermediate Treatment	12
Aitkin	6	12	50	26	10612050269	Northern Hardwoods	Intermediate Treatment	24
Aitkin	10	22	51	26	11022051269	Balsam Fir	Even-Aged Regeneration Harvest	19
Aitkin	18	10	52	22	11810052229	Tamarack	Even-Aged Regeneration Harvest	8
Aitkin	6	2	52	22	10602052229	Aspen	Even-Aged Regeneration Harvest	8
Aitkin	18	34	52	24	11834052249	Aspen	Even-Aged Regeneration Harvest	55
Aitkin	18	6	52	24	11806052249	Jack Pine	Even-Aged Regeneration Harvest	3
Aitkin	19	22	52	24	11922052249	Jack Pine	Even-Aged Regeneration Harvest	32
Aitkin	19	5	52	24	11905052249	Jack Pine	Even-Aged Regeneration Harvest	4
Aitkin	19	9	52	24	11909052249	Jack Pine	Even-Aged Regeneration Harvest	2
Aitkin	12	51	52	25	11251052259	White Spruce	Intermediate Treatment	9
Aitkin	13	23	52	25	11323052259	Jack Pine	Even-Aged Regeneration Harvest	9
Aitkin	2	28	52	25	10228052259	Northern Hardwoods	Intermediate Treatment	12
Backus	36	15	139	28	13615139289	White Pine	Sanitation Cut - Selective Harvest	13
Backus	36	18	139	28	13618139289	White Pine	Sanitation Cut - Selective Harvest	20
Backus	36	4	139	28	13604139289	White Pine	Sanitation Cut - Selective Harvest	62
Backus	28	2	139	31	12802139319	Aspen	Clearcut with Reserves - Sprouting	40
Backus	16	3	140	30	11603140309	Aspen	Clearcut with Reserves - Sprouting	14
Bagley	20	2	143	37	12002143379	Jack Pine	Clearcut with Reserves	19
Bagley	10	6	143	39	11006143399	Aspen	Clearcut with Reserves	5
Bagley	4	5	143	39	10405143399	Aspen	Clearcut with Reserves	16
Bagley	9	10	143	39	10910143399	Aspen	Clearcut with Reserves	5
Bagley	1	19	143	40	10119143409	Norway Pine	Commercial Thinning	4
Bagley	2	9	143	40	10209143409	Tamarack	Re-Inventory	5
Bagley	24	21	145	39	12421145399	Aspen	Clearcut with Reserves	5
Bagley	8	1	147	39	10801147399	Aspen	Clearcut with Reserves	2
Baudette	14	18	157	33	11418157339	Jack Pine	Commercial Thinning	8
Baudette	23	14	157	33	12314157339	Jack Pine	Commercial Thinning	10
Bemidji	26	8	144	30	12608144309	Birch	Uneven-Aged Regeneration Harvest	32
Bemidji	18	7	145	31	11807145319	Birch	On-site Stand Evaluation	3
Bemidji	6	3	146	30	10603146309	Aspen	Re-Inventory	7
Bemidji	10	5	146	31	11005146319	Norway Pine	Shelterwood	4
Bemidji	10	7	146	31	11007146319	Black Spruce, Lowland	Clearcut with Reserves	4
Bemidji	4	1	147	31	10401147319	Tamarack	Clearcut with Reserves	16
Bemidji	10	10	148	33	11010148339	Aspen	Clearcut with Reserves	10
Bemidji	11	24	148	33	11124148339	Aspen	Clearcut with Reserves	14
Blackduck	27	4	147	29	12704147299	Aspen	Clearcut with Reserves	4
Blackduck	18	5	148	31	11805148319	Balsam Fir	On-site Stand Evaluation	14

<b>Area Name</b>	<b>Sec</b>	<b>Stand</b>		<b>Rge</b>	<b>Stand ID</b>	<b>Cover Type</b>	<b>Preliminary Stand Prescription</b>	<b>Acres</b>
		<b>No.</b>	<b>Twp</b>					
Blackduck	32	13	148	31	13213148319	Birch	Clearcut with Reserves	15
Blackduck	32	19	148	31	13219148319	Aspen	Clearcut with Reserves	22
Blackduck	30	6	153	28	13006153289	Balsam Fir	On-site Evaluation - High Risk or Low Volume	17
Brainerd	2	6	136	27	10206136279	Jack Pine	On-site Stand Evaluation	5
Brainerd	29	1	137	25	12901137259	Aspen	On-site Stand Evaluation	27
Brainerd	16	3	138	26	11603138269	White Pine	On-site Stand Evaluation	4
Brainerd	36	17	138	26	13617138269	Norway Pine	On-site Stand Evaluation	20
Brainerd	36	19	138	26	13619138269	Norway Pine	On-site Stand Evaluation	29
Brainerd	9	3	138	26	10903138269	Birch	On-site Stand Evaluation	7
Cambridge	6	25	32	22	10625032229	Norway Pine	Intermediate Treatment	3
Cambridge	14	12	33	22	11412033229	White Pine	Intermediate Treatment	10
Cambridge	14	6	33	22	11406033229	White Pine	Intermediate Treatment	47
Cambridge	31	6	34	21	13106034219	White Pine	Intermediate Treatment	4
Cambridge	35	4	34	21	13504034219	Norway Pine	Intermediate Treatment	5
Cambridge	15	1	34	27	11501034279	White Pine	Intermediate Treatment	7
Cambridge	16	18	34	27	11618034279	Norway Pine	Intermediate Treatment	4
Cambridge	16	30	34	27	11630034279	White Pine	Intermediate Treatment	3
Cambridge	16	32	34	27	11632034279	Norway Pine	Intermediate Treatment	2
Cambridge	16	44	34	27	11644034279	Norway Pine	Intermediate Treatment	24
Cambridge	17	8	34	27	11708034279	White Pine	Intermediate Treatment	5
Cambridge	20	3	34	27	12003034279	Norway Pine	Intermediate Treatment	28
Cambridge	21	7	34	27	12107034279	Norway Pine	Intermediate Treatment	28
Cambridge	28	5	34	27	12805034279	Norway Pine	Intermediate Treatment	18
Cambridge	29	12	34	27	12912034279	Norway Pine	Even-Aged Regeneration Harvest	12
Cambridge	35	3	34	27	13503034279	Norway Pine	Intermediate Treatment	30
Cambridge	36	28	34	27	13628034279	Norway Pine	Intermediate Treatment	4
Cambridge	36	8	34	27	13608034279	White Pine	Intermediate Treatment	4
Cloquet	31	23	49	16	13123049169	Aspen	On-site Evaluation - High Risk or Low Volume	6
Cloquet	32	6	49	16	13206049169	Aspen	On-site Evaluation - High Risk or Low Volume	10
Cloquet	36	1	49	17	13601049179	Aspen	On-site Stand Evaluation	15
Cloquet	13	1	49	19	11301049199	Aspen	Clearcut with Reserves	5
Cloquet	31	3	52	18	13103052189	Birch	Clearcut with Reserves	18
Cloquet	34	3	53	15	13403053159	Aspen	On-site Evaluation - High Risk or Low Volume	11
Cloquet	36	8	53	16	13608053169	Aspen	Clearcut with Reserves	24
Cloquet	36	9	53	16	13609053169	Balsam Fir	On-site Evaluation - High Risk or Low Volume	16
Cloquet	6	6	53	17	10606053179	Balsam Fir	Clearcut with Reserves	6
Cloquet	16	14	54	17	11614054179	White Spruce	Clearcut with Reserves	6
Cloquet	16	24	55	14	11624055149	Norway Pine	Commercial Thinning	9
Cloquet	22	16	55	14	12216055149	Norway Pine	Commercial Thinning	27
Cloquet	22	18	55	14	12218055149	Norway Pine	Commercial Thinning	11
Deer River	6	6	142	25	10606142259	Aspen	Clearcut with Reserves	30
Deer River	36	7	142	26	13607142269	Jack Pine	Clearcut with Reserves	13
Deer River	21	1	145	26	12101145269	Birch	On-site Stand Evaluation	5
Deer River	21	5	145	26	12105145269	Birch	On-site Stand Evaluation	11



<u>Area Name</u>	<u>Stand</u>				<u>Stand ID</u>	<u>Cover Type</u>	<u>Preliminary Stand Prescription</u>	<u>Acres</u>
	<u>Sec</u>	<u>No.</u>	<u>Twp</u>	<u>Rge</u>				
Deer River	27	10	147	25	12710147259	Tamarack	On-site Evaluation - High Risk or Low Volume	41
Deer River	27	14	147	25	12714147259	Birch	Clearcut with Reserves	9
Deer River	16	14	53	22	11614053229	White Pine	On-site Stand Evaluation	3
Deer River	24	43	53	23	12443053239	Balsam Fir	Clearcut with Reserves	2
Deer River	18	1	54	24	11801054249	Norway Pine	Commercial Thinning	7
Deer River	18	18	54	24	11818054249	Norway Pine	Commercial Thinning	3
Deer River	18	20	54	24	11820054249	Aspen	Clearcut with Reserves	5
Deer River	18	22	54	24	11822054249	White Pine	On-site Stand Evaluation	4
Deer River	18	4	54	24	11804054249	Norway Pine	Commercial Thinning	56
Deer River	18	6	54	24	11806054249	Aspen	Clearcut with Reserves	9
Deer River	36	10	55	23	13610055239	Birch	On-site Stand Evaluation	41
Deer River	21	2	55	24	12102055249	Birch	On-site Stand Evaluation	10
Deer River	36	10	56	24	13610056249	Norway Pine	Commercial Thinning	18
Deer River	36	21	56	24	13621056249	Aspen	Clearcut with Reserves	18
Deer River	16	11	58	26	11611058269	Norway Pine	Commercial Thinning	9
Deer River	36	3	58	26	13603058269	Birch	On-site Stand Evaluation	22
Deer River	36	5	58	26	13605058269	Birch	On-site Stand Evaluation	4
Deer River	30	1	59	24	13001059249	Birch	On-site Stand Evaluation	5
Deer River	2	3	59	25	10203059259	Black Spruce, Lowland	On-site Stand Evaluation	22
Deer River	29	8	59	25	12908059259	Birch	On-site Stand Evaluation	6
Deer River	22	16	59	27	12216059279	Balsam Fir	On-site Stand Evaluation	18
Deer River	26	8	59	27	12608059279	Balsam Fir	Clearcut with Reserves	8
Detroit Lakes	25	1	142	38	12501142389	Norway Pine	Selective Thinning - Commercial	10
Effie	8	18	149	25	10818149259	Norway Pine	Commercial Thinning	5
Effie	9	15	152	25	10915152259	Balsam Fir	Clearcut with Reserves	20
Hibbing	13	6	58	20	11306058209	Lowland Brush	Clearcut with Reserves - Sprouting	1
Hibbing	1	1	58	21	10101058219	Jack Pine	Clearcut with Reserves - Artificial	3
Hibbing	11	10	59	21	11110059219	Aspen	Clearcut with Reserves - Sprouting	10
Hibbing	17	13	59	22	11713059229	Aspen	Clearcut with Reserves - Sprouting	16
Hibbing	30	1	59	23	13001059239	Jack Pine	Shelterwood with Reserves	5
Hibbing	30	2	59	23	13002059239	Norway Pine	Commercial Thinning	4
Hibbing	30	3	59	23	13003059239	Norway Pine	Shelterwood with Reserves	24
Hibbing	10	10	60	21	11010060219	Norway Pine	Commercial Thinning	12
Hibbing	9	17	60	21	10917060219	Norway Pine	Commercial Thinning	18
Hibbing	11	5	60	22	11105060229	Norway Pine	Commercial Thinning	10
Hibbing	2	43	60	22	10243060229	Norway Pine	Commercial Thinning	2
Hibbing	2	7	60	22	10207060229	Norway Pine	Commercial Thinning	25
Hibbing	2	8	60	22	10208060229	Norway Pine	Commercial Thinning	15
Hibbing	21	7	60	23	12107060239	Norway Pine	Commercial Thinning	18
Hibbing	3	1	60	23	10301060239	Norway Pine	Commercial Thinning	5
Hibbing	16	17	61	21	11617061219	Norway Pine	Commercial Thinning	6
Hibbing	26	1	61	22	12601061229	Norway Pine	Commercial Thinning	11
Hibbing	1	20	61	23	10120061239	Norway Pine	Commercial Thinning	5
Hibbing	1	27	61	23	10127061239	Norway Pine	Commercial Thinning	13

<u>Area Name</u>	<u>Stand</u>				<u>Stand ID</u>	<u>Cover Type</u>	<u>Preliminary Stand Prescription</u>	<u>Acres</u>
	<u>Sec</u>	<u>No.</u>	<u>Twp</u>	<u>Rge</u>				
Hibbing	1	28	61	23	10128061239	Aspen	Clearcut with Reserves - Sprouting	4
Hibbing	1	29	61	23	10129061239	Aspen	Salvage with Reserves - Clearcut	8
Hibbing	1	33	61	23	10133061239	Birch	Clearcut - Sprouting	17
Hibbing	1	5	61	23	10105061239	Norway Pine	Commercial Thinning	4
Hibbing	10	8	61	23	11008061239	Aspen	Salvage with Reserves - Clearcut	3
Hibbing	10	9	61	23	11009061239	Aspen	Salvage with Reserves - Clearcut	8
Hibbing	11	1	61	23	11101061239	Aspen	Salvage with Reserves - Clearcut	10
Hibbing	2	1	61	23	10201061239	Norway Pine	Commercial Thinning	6
Hibbing	2	22	61	23	10222061239	Norway Pine	Commercial Thinning	7
Hibbing	2	23	61	23	10223061239	Norway Pine	Commercial Thinning	4
Hibbing	2	7	61	23	10207061239	Aspen	Salvage with Reserves - Clearcut	15
Hibbing	27	10	62	23	12710062239	Norway Pine	Commercial Thinning	10
Hibbing	34	3	62	23	13403062239	Norway Pine	Commercial Thinning	6
Hibbing	36	41	62	23	13641062239	Norway Pine	Commercial Thinning	17
Hibbing	8	2	62	23	10802062239	Norway Pine	Commercial Thinning	19
Hibbing	16	11	63	23	11611063239	Aspen	Clearcut with Reserves - Sprouting	21
Hibbing	16	2	63	23	11602063239	Aspen	Clearcut with Reserves - Sprouting	19
Lake City	24	10	112	14	12410112149	White Pine	Commercial Thinning	2
Lewiston	13	7	107	8	11307107089	White Pine	Commercial Thinning	3
Lewiston	13	8	107	8	11308107089	White Pine	Commercial Thinning	18
Lewiston	14	8	107	8	11408107089	White Pine	Commercial Thinning	4
Lewiston	14	9	107	8	11409107089	White Pine	Commercial Thinning	30
Little Falls	17	4	40	27	11704040279	Tamarack	Seed Tree	10
Littlefork	7	8	154	25	10708154259	Aspen	Clearcut with Reserves	10
Littlefork	26	7	155	28	12607155289	Aspen	Clearcut with Reserves	15
Littlefork	13	10	156	26	11310156269	Tamarack	Clearcut with Reserves	22
Littlefork	34	17	156	26	13417156269	Balsam Fir	Clearcut with Reserves	8
Littlefork	21	3	157	26	12103157269	Balsam Fir	Clearcut with Reserves	12
Littlefork	4	11	65	24	10411065249	Norway Pine	Commercial Thinning	8
Littlefork	4	21	65	24	10421065249	Norway Pine	Re-Inventory	4
Littlefork	17	13	67	23	11713067239	Aspen	On-site Evaluation - High Risk or Low Volume	6
Littlefork	26	2	67	23	12602067239	Balsam Fir	On-site Stand Evaluation	5
Littlefork	28	1	67	23	12801067239	Black Spruce, Lowland	Clearcut with Reserves	4
Littlefork	29	23	67	23	12923067239	Ash	Uneven-Aged Regeneration Harvest	6
Littlefork	29	28	67	23	12928067239	Black Spruce, Lowland	Clearcut with Reserves	15
Littlefork	36	14	71	23	13614071239	Aspen	Clearcut with Reserves	37
Orr	1	4	64	18	10104064189	Aspen	Clearcut with Reserves	4
Orr	25	1	64	19	12501064199	Aspen	On-site Evaluation - High Risk or Low Volume	25
Orr	10	17	64	21	11017064219	Balm of Gilead	Clearcut with Reserves - Sprouting	76
Orr	10	18	64	21	11018064219	Balm of Gilead	Clearcut with Reserves - Sprouting	7
Orr	36	12	65	17	13612065179	Norway Pine	Commercial Thinning	16
Orr	13	5	65	20	11305065209	Aspen	On-site Evaluation - High Risk or Low Volume	6
Orr	16	2	65	20	11602065209	Balsam Fir	On-site Evaluation - High Risk or Low Volume	39
Orr	29	4	66	17	12904066179	Norway Pine	Clearcut with Reserves	6

<u>Area Name</u>	<u>Sec</u>	<u>Stand</u>		<u>Rge</u>	<u>Stand ID</u>	<u>Cover Type</u>	<u>Preliminary Stand Prescription</u>	<u>Acres</u>
		<u>No.</u>	<u>Twp</u>					
Orr	13	1	66	18	11301066189	Aspen	On-site Evaluation - High Risk or Low Volume	12
Orr	18	1	66	18	11801066189	Norway Pine	Commercial Thinning	12
Orr	19	5	66	18	11905066189	Balsam Fir	On-site Evaluation - High Risk or Low Volume	8
Orr	21	1	66	18	12101066189	Aspen	Clearcut with Reserves	37
Orr	22	1	66	18	12201066189	Aspen	Clearcut with Reserves	8
Orr	4	3	66	18	10403066189	White Pine	Commercial Thinning	7
Orr	4	4	66	18	10404066189	Aspen	Clearcut with Reserves	11
Orr	4	16	66	19	10416066199	Aspen	Clearcut with Reserves	39
Orr	4	20	66	19	10420066199	Aspen	Clearcut with Reserves	30
Orr	33	10	66	20	13310066209	Aspen	Clearcut with Reserves	24
Orr	33	11	66	20	13311066209	White Pine	Commercial Thinning	3
Orr	33	12	66	20	13312066209	White Pine	Commercial Thinning	6
Orr	11	7	66	22	11107066229	Birch	On-site Evaluation - High Risk or Low Volume	16
Orr	12	2	66	22	11202066229	Aspen	Clearcut with Reserves	14
Orr	3	7	66	22	10307066229	Norway Pine	Clearcut with Reserves	3
Orr	5	1	67	18	10501067189	Aspen	Clearcut with Reserves	13
Orr	7	1	67	18	10701067189	Aspen	Clearcut with Reserves	9
Orr	16	1	67	22	11601067229	White Pine	Commercial Thinning	7
Orr	11	11	68	19	11111068199	Jack Pine	On-site Evaluation - High Risk or Low Volume	19
Orr	11	15	68	19	11115068199	Norway Pine	Commercial Thinning	5
Orr	11	5	68	19	11105068199	Jack Pine	Clearcut with Reserves	14
Orr	13	20	68	19	11320068199	Balsam Fir	On-site Evaluation - High Risk or Low Volume	6
Orr	13	23	68	19	11323068199	Balsam Fir	On-site Evaluation - High Risk or Low Volume	7
Orr	24	12	68	19	12412068199	Aspen	Clearcut with Reserves	25
Orr	24	13	68	19	12413068199	Aspen	Clearcut with Reserves	10
Orr	24	17	68	19	12417068199	Aspen	Clearcut with Reserves	29
Orr	24	21	68	19	12421068199	Birch	On-site Evaluation - High Risk or Low Volume	6
Orr	10	22	68	20	11022068209	Aspen	Clearcut with Reserves	31
Orr	11	1	68	20	11101068209	White Pine	Commercial Thinning	13
Orr	11	13	68	20	11113068209	Birch	On-site Evaluation - High Risk or Low Volume	18
Orr	11	14	68	20	11114068209	Balsam Fir	On-site Evaluation - High Risk or Low Volume	6
Orr	3	5	68	20	10305068209	White Pine	Commercial Thinning	11
Orr	3	9	68	20	10309068209	White Pine	Commercial Thinning	4
Orr	1	18	68	21	10118068219	Jack Pine	Clearcut with Reserves	7
Park Rapids	36	7	139	37	13607139379	Aspen	Clearcut with Reserves - Sprouting	12
Park Rapids	16	6	141	32	11606141329	Aspen	Clearcut with Reserves - Sprouting	26
Park Rapids	2	13	141	32	10213141329	Aspen	Clearcut with Reserves - Sprouting	10
Park Rapids	2	5	141	32	10205141329	Aspen	Clearcut with Reserves - Sprouting	10
Park Rapids	15	21	141	36	11521141369	Aspen	Clearcut with Reserves - Sprouting	20
Park Rapids	16	10	141	36	11610141369	Norway Pine	Commercial Thinning	44
Park Rapids	16	7	141	36	11607141369	Norway Pine	Commercial Thinning	44
Park Rapids	21	27	141	36	12127141369	Norway Pine	Commercial Thinning	7
Park Rapids	11	1	142	32	11101142329	Aspen	Clearcut with Reserves - Sprouting	22
Park Rapids	19	18	142	32	11918142329	Aspen	Clearcut with Reserves - Sprouting	22

<u>Area Name</u>	<u>Sec</u>	<u>Stand No.</u>	<u>Twp</u>	<u>Rge</u>	<u>Stand ID</u>	<u>Cover Type</u>	<u>Preliminary Stand Prescription</u>	<u>Acres</u>
Park Rapids	25	1	142	32	12501142329	Aspen	Clearcut with Reserves - Sprouting	29
Park Rapids	25	11	142	32	12511142329	Aspen	Clearcut with Reserves - Sprouting	45
Park Rapids	26	24	142	32	12624142329	Aspen	Clearcut with Reserves - Sprouting	10
Park Rapids	26	5	142	32	12605142329	Aspen	Clearcut with Reserves - Sprouting	20
Park Rapids	33	10	142	32	13310142329	Aspen	Clearcut with Reserves - Sprouting	18
Park Rapids	33	15	142	32	13315142329	Aspen	Clearcut with Reserves - Sprouting	18
Park Rapids	35	11	142	32	13511142329	Aspen	Clearcut with Reserves - Sprouting	12
Park Rapids	35	28	142	32	13528142329	White Pine	Clearcut with Reserves - Sprouting	12
Rochester	20	1	105	13	12001105139	Northern Hardwoods	Uneven-Aged Regeneration Harvest	11
Rochester	20	2	105	13	12002105139	White Pine	Single Tree Selection	4
Sandstone	19	17	39	19	11917039199	Norway Pine	Commercial Thinning	21
Sandstone	19	35	39	19	11935039199	Norway Pine	Commercial Thinning	16
Sandstone	30	19	39	19	13019039199	Lowland Hardwoods	On-site Stand Evaluation	51
Sandstone	15	2	41	16	11502041169	Aspen	On-site Evaluation - High Risk or Low Volume	37
Sandstone	36	1	42	17	13601042179	Oak	Commercial Thinning	33
Sandstone	20	11	44	16	12011044169	Northern Hardwoods	Commercial Thinning	4
Sandstone	12	11	45	16	11211045169	Tamarack	Seed Tree	6
Sandstone	12	14	45	16	11214045169	Tamarack	Seed Tree	7
Sandstone	2	8	45	16	10208045169	Tamarack	Seed Tree	4
Tower	36	30	60	12	13630060129	Birch	On-site Evaluation - High Risk or Low Volume	21
Tower	16	17	61	11	11617061119	Aspen	Clearcut with Reserves	33
Tower	16	26	61	11	11626061119	Aspen	On-site Evaluation - High Risk or Low Volume	21
Tower	16	30	61	11	11630061119	Aspen	Clearcut with Reserves	29
Tower	36	14	61	11	13614061119	Aspen	Clearcut with Reserves	32
Tower	36	19	61	11	13619061119	Birch	On-site Evaluation - High Risk or Low Volume	6
Tower	24	20	61	17	12420061179	Norway Pine	Selective Thinning - Commercial	13
Tower	30	1	62	12	13001062129	Aspen	Clearcut with Reserves	8
Tower	19	2	62	13	11902062139	Balsam Fir	On-site Stand Evaluation	3
Tower	20	14	62	13	12014062139	Aspen	On-site Evaluation - High Risk or Low Volume	14
Tower	10	3	63	17	11003063179	Norway Pine	Commercial Thinning	46
Tower	10	4	63	17	11004063179	Norway Pine	Commercial Thinning	22
Tower	9	7	63	17	10907063179	Norway Pine	Commercial Thinning	14
Tower	2	15	63	18	10215063189	Jack Pine	Commercial Thinning	10
Tower	24	1	63	18	12401063189	White Pine	Uneven-Aged Regeneration Harvest	28
Tower	24	5	63	18	12405063189	Balsam Fir	On-site Stand Evaluation	40
Tower	12	4	63	19	11204063199	Aspen	On-site Evaluation - High Risk or Low Volume	10
Tower	13	6	63	20	11306063209	Birch	Clearcut with Reserves - Artificial	4
Tower	33	2	63	20	13302063209	Aspen	Clearcut with Reserves - Artificial	45
Two Harbors	16	23	53	12	11623053129	Birch	On-site Evaluation - High Risk or Low Volume	59
Two Harbors	16	8	53	12	11608053129	Aspen	Clearcut with Reserves	61
Two Harbors	19	1	53	12	11901053129	Birch	On-site Evaluation - High Risk or Low Volume	11
Two Harbors	19	2	53	12	11902053129	Birch	On-site Evaluation - High Risk or Low Volume	22
Two Harbors	16	1	54	11	11601054119	Northern Hardwoods	Uneven-Aged Regeneration Harvest	40

<u>Area Name</u>	<u>Sec</u>	<u>Stand No.</u>	<u>Twp</u>	<u>Rge</u>	<u>Stand ID</u>	<u>Cover Type</u>	<u>Preliminary Stand Prescription</u>	<u>Acres</u>
Two Harbors	16	2	54	11	11602054119	Northern Hardwoods	Uneven-Aged Regeneration Harvest	40
Two Harbors	17	5	62	1	11705062019	Aspen	Clearcut with Reserves	20
Two Harbors	16	11	62	2	11611062028	Aspen	Clearcut with Reserves	98
Two Harbors	17	2	62	4	11702062049	Balsam Fir	Clearcut with Reserves	13
Two Harbors	26	2	62	4	12602062049	Aspen	On-site Evaluation - High Risk or Low Volume	9
Two Harbors	26	5	62	4	12605062049	Birch	On-site Evaluation - High Risk or Low Volume	45
Two Harbors	26	6	62	4	12606062049	White Pine	Uneven-Aged Regeneration Harvest	10
Two Harbors	26	7	62	4	12607062049	Norway Pine	Commercial Thinning	4
Two Harbors	26	8	62	4	12608062049	Norway Pine	Commercial Thinning	8
Two Harbors	23	4	64	3	12304064038	Aspen	Clearcut with Reserves	16
Two Harbors	25	10	64	3	12510064038	Aspen	On-site Evaluation - High Risk or Low Volume	91
Two Harbors	28	16	64	4	12816064048	White Spruce	Clearcut with Reserves	24
Warroad	7	27	160	36	10727160369	Norway Pine	Selective Thinning - Commercial	13
Warroad	27	27	160	38	12727160389	Balm of Gilead	Clearcut with Reserves - Sprouting	41
Warroad	16	5	161	35	11605161359	Aspen	Clearcut with Reserves - Sprouting	76
Warroad	28	17	161	35	12817161359	Norway Pine	Selective Thinning - Commercial	17
Warroad	29	38	161	35	12938161359	Norway Pine	Selective Thinning - Commercial	16
Warroad	29	21	161	36	12921161369	Norway Pine	Selective Thinning - Commercial	11
Warroad	31	3	161	36	13103161369	Norway Pine	Selective Thinning - Commercial	7
Warroad	25	8	161	37	12508161379	Norway Pine	Selective Thinning - Commercial	4