

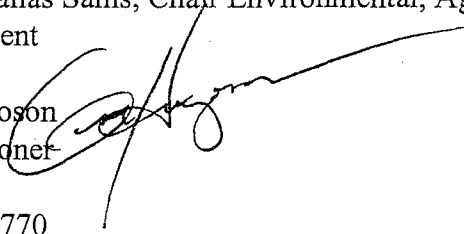
STATE OF MINNESOTA

Office Memorandum

[OF AGRICULTURE

04 - 0300

DATE: October 14, 2003

TO: Representative Elaine Harder, Chair Ag and Rural Development Finance
Senator Dallas Sams, Chair Environmental, Agriculture and Economic
DevelopmentFROM: Gene Hugoson
Commissioner 

PHONE: 651-215-5770

SUBJECT: Ag Fund October 15th Fund Statements

In accordance with requirements added to M.S. 17.03, Subd. 13, in Laws of 1999, attached is a copy of the Ag Fund as of the end of September 2003 at both the fund level and at the individual account level.

These statements contain actual revenues, expenditures, and transfers for FY 2001, 2002, and 2003. For FY 2004 and beyond the information is based on projections utilizing our latest forecasting information. As requested, the future years do not include inflation, or projected salary increases or insurance increases.

Several of the accounts in the Ag Fund will require further discussions to determine if legislative action is needed. These accounts are:

- Grain Inspection (fees must be approved by USDA)
- Fruit & Vegetable Inspection
- Grain Buyers & Storage
- Waste Pesticide

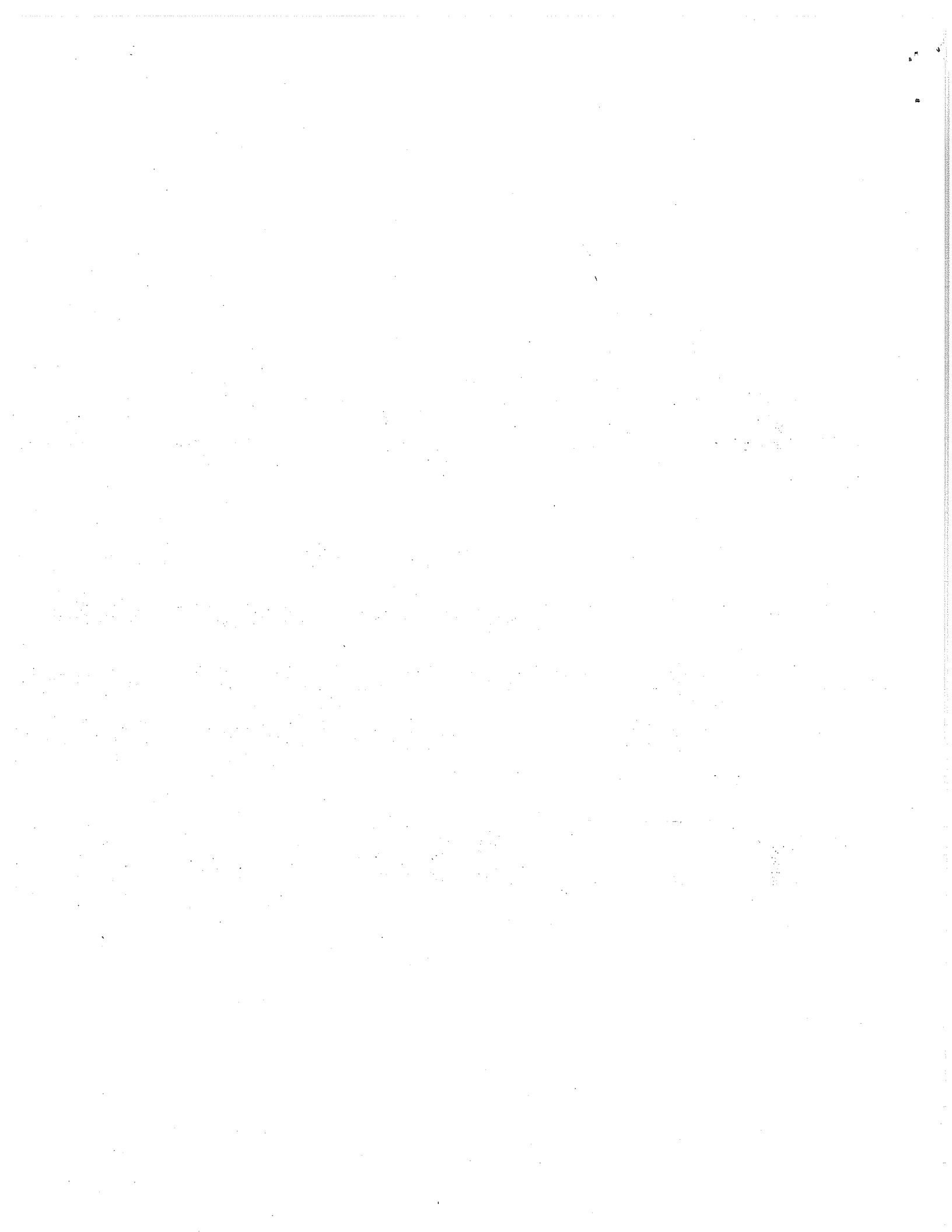
If you or your staff would like to meet and review the fund statement in more detail or discuss the need for legislative action, please contact Budget Director Becky Leschner at 651-215-5770, at your earliest convenience.

Thank you.

cc: Sharon Clark
Perry Aasness
Jim Boerboom
Becky Leschner
Scott Masters, EBO, Department of Finance

Jim Reinholdz
Bill Marx

Steve Ernest
Greg Knopff



Department of Agriculture
Agricultural Fund Statement

\$ in thousands

	<u>Actual FY 2001</u>	<u>Actual FY 2002</u>	<u>Actual FY 2003</u>	<u>FY 2004</u>	<u>Conf FY 2005</u>	<u>Projected FY 2006</u>	<u>Projected FY 2007</u>
<u>Actual & Estimated Resources</u>							
Balance Forward:							
Balance Forward from Prior Year	8,755	7,856	9,405	9,209	9,145	8,926	8,970
Prior Year Adjustments	11	2	204				
Adjusted Balance Forward	8,766	7,858	9,609	9,209	9,145	8,926	8,970
Receipts:							
Departmental Earnings	16,869	18,045	19,091	18,828	18,806	18,812	18,812
Investment Income	451	254	189	259	253	245	245
Other	-	20	266	714	188	188	188
Total Receipts	17,320	18,319	19,546	19,801	19,247	19,245	19,245
Transfers from Other Funds:							
General Fund	196	71	71	71	71	71	71
Special Revenue Fund	49	730	-	-	-	-	-
Capital Projects Fund	-	1,628	-	-	-	-	-
Agriculture Fund-M.S. 18B.26, subd 3	-	-	600	-	-	-	-
Federal Fund	-	23	-	-	-	-	-
Gift Fund	-	8	-	-	-	-	-
Total Transfers From other Funds:	245	2,460	671	71	71	71	71
Total Resources Available	26,331	28,637	29,826	29,081	28,463	28,242	28,286
<u>Actual & Estimated Uses:</u>							
Expenditures:							
Department of Agriculture	17,635	18,992	19,777	19,897	19,499	19,234	19,234
Total Expenditures	17,635	18,992	19,777	19,897	19,499	19,234	19,234
Transfers to Other Funds:							
General Fund	-	1	-	-	-	-	-
Agriculture Fund-M.S. 18B.26, subd 3	-	-	600	-	-	-	-
Special Revenue Fund-AURI	800	200	200	-	-	-	-
Debt Service Fund	40	39	40	39	38	38	38
Total Transfers:	840	240	840	39	38	38	38
Total Uses:	18,475	19,232	20,617	19,936	19,537	19,272	19,272
Balance Forward	7,856	9,405	9,209	9,145	8,926	8,970	9,014

Department of Agriculture
Agricultural Fund Statement

Account	Page	Program	Fees Last		Revenue Season
			Changed	Primary Source	
Waste Pesticide	3	Protection Services	1994		
Commercial Feed	4	Protection Services	1997	Manufacturers/distributors	January
Fertilizer Inspection	5	Protection Services	1989	Retailers	December
Pesticide Regulatory	6	Protection Services	1987	Retailers/Manufacturers	Dec/March
Ag Chemical Response & Reimbursement	7	Protection Services	2001	Manufacturers	January
Seed Inspection	8	Protection Services	2003	Companies/labelers	June
Nursery-Phytosanitary-NEW	9	Protection Services	2003	Dealers/retailers	December
Dairy Services	10	Protection Services	2003	Processors/Farmers	July/August
Food Handler Reinspection	11	Protection Services	2003	Manufacturers	
Egg Law Inspection	12	Protection Services	1999	Egg Plant Packers	June
Eurasian Wild Pig - Closed	13				
Food Handler Plan Review	14	Protection Services	2001	Food retailers	Monthly
Commercial Canning	15	Protection Services	1999	Commercial Canneries	December
Beverage Inspection	16	Protection Services	1999	Beverage Plants	December
Laboratory Services	17	Protection Services	1998	DNR/MDH	Quarterly
Seed Potato Inspection	18	Protection Services	1998	Farmers	June
Grain Inspection	19	Protection Services	2000	Grain Shippers	March-Nov
Fruit & Vegetable Inspection	20	Protection Services	1998	Wholesalers	Monthly
Livestock Weighing	21	Ag Marketing & Development	1980	Farmers	Monthly
Promotion Councils	22	Ag Marketing & Development	Contract	Annual contract	Quarterly
Grain Buyers & Storage	23	Ag Marketing & Development	2001	Grain Warehouse operators	June
Minnesota Grown Labeling	24	Ag Marketing & Development	1987	Farmers	December
Minnesota Grown Matching	25	Ag Marketing & Development		General Fund Transfer/Gifts	October/March
Minnesota Certification	26	Ag Marketing & Development	2001	Ethanol Plants	October
Individual Sewage Treatment Systems Loans	27	Admin & Fin Assistance	Loans	Farmers	April/October
Ag Best Management Practices 2000 Supplement	28	Admin & Fin Assistance	Loans	Farmers	April/October
Agricultural Statistics	29	Admin & Fin Assistance	Contract	U of M/state agencies	Sept/Oct

Department of Agriculture
Agricultural Fund Statement

\$ in Thousands

Waste Pesticide Account

M.S. 18B.065, Subd 5
1100-111

Actual & Estimated Resources

Balance Forward:

	<u>Actual FY 2001</u>	<u>Actual FY 2002</u>	<u>Actual FY 2003</u>	<u>MAPs FY 2004</u>	<u>Conf FY 2005</u>	<u>Projected FY 2006</u>	<u>Projected FY 2007</u>
Balance Forward from Prior Year	-	-	133	291	202	203	204
Prior Year Adjustments	-	-	-	-	-	-	-
Adjusted Balance Forward	-	-	133	291	202	203	204

Receipts:

Departmental Earnings	-	-	-	-	-	-	-
Investment Income	-	-	-	-	-	-	-
Other	-	2	5	1	1	1	1
Total Receipts	-	2	5	1	1	1	1

Transfers from Other Funds:

General Fund	-	-	-	-	-	-	-
Special Revenue Fund	-	53	-	-	-	-	-
Capital Projects Fund	-	-	-	-	-	-	-
Agriculture Fund-M.S. 18B.26, subd 3	-	600	600	-	-	-	-
Federal Fund	-	-	-	-	-	-	-
Gift Fund	-	-	-	-	-	-	-
Total Transfers From other Funds:	-	653	600	-	-	-	-

Total Resources Available	-	655	738	292	203	204	205
----------------------------------	---	-----	-----	-----	-----	-----	-----

Actual & Estimated Uses:

Expenditures:

MDA-Agronomy & Plant Protection	-	522	447	90	-	-	-
Total Expenditures	-	522	447	90	-	-	-

Transfers to Other Funds:

General Fund	-	-	-	-	-	-	-
Agriculture Fund	-	-	-	-	-	-	-
Special Revenue Fund	-	-	-	-	-	-	-
Debt Service Fund	-	-	-	-	-	-	-
Total Transfers:	-	-	-	-	-	-	-

Total Uses:	-	522	447	90	-	-	-
--------------------	---	-----	-----	----	---	---	---

Balance Forward	-	133	291	202	203	204	205
------------------------	---	-----	-----	-----	-----	-----	-----

Department of Agriculture
Agricultural Fund Statement

\$ in Thousands

Commercial Feed Inspection Account

M.S. 25.39 Subd 4
1100-130/1600-130

Actual & Estimated Resources

Balance Forward:

	<u>Actual FY 2001</u>	<u>Actual FY 2002</u>	<u>Actual FY 2003</u>	<u>MAPs FY 2004</u>	<u>Conf FY 2005</u>	<u>Projected FY 2006</u>	<u>Projected FY 2007</u>
Balance Forward from Prior Year	811	870	799	791	791	791	791
Prior Year Adjustments	-						
Adjusted Balance Forward	811	870	799	791	791	791	791

Receipts:

Departmental Earnings	804	742	815	768	768	768	768
Investment Income	50	28	17	28	28	28	28
Other			-	-	-	-	-
Total Receipts	854	770	832	796	796	796	796

Transfers from Other Funds:

General Fund						-	-
Special Revenue Fund	-					-	-
Capital Projects Fund						-	-
Agriculture Fund						-	-
Federal Fund		-				-	-
Gift Fund						-	-
Total Transfers From other Funds:	-	-	-	-	-	-	-

Total Resources Available

	1,665	1,640	1,631	1,587	1,587	1,587	1,587
--	--------------	--------------	--------------	--------------	--------------	--------------	--------------

Actual & Estimated Uses:

Expenditures:

MDA-Agronomy & Plant Protection	605	612	631	587	587	587	587
MDA-Laboratory Services	190	229	209	209	209	209	209
Total Expenditures	795	841	840	796	796	796	796

Transfers to Other Funds:

General Fund				-	-	-	-
Agriculture Fund	-	-	-	-	-	-	-
Special Revenue Fund	-	-	-	-	-	-	-
Debt Service Fund				-	-	-	-
Total Transfers:	-	-	-	-	-	-	-

Total Uses:

	795	841	840	796	796	796	796
--	------------	------------	------------	------------	------------	------------	------------

Balance Forward

	870	799	791	791	791	791	791
--	------------	------------	------------	------------	------------	------------	------------

Department of Agriculture
Agricultural Fund Statement

\$ in Thousands

Fertilizer Inspection Account
M.S. 18C.131
1100-131/1600-131

Actual & Estimated Resources

Balance Forward:

	<u>Actual FY 2001</u>	<u>Actual FY 2002</u>	<u>Actual FY 2003</u>	<u>MAPs FY 2004</u>	<u>Conf FY 2005</u>	<u>Projected FY 2006</u>	<u>Projected FY 2007</u>
Balance Forward from Prior Year	333	159	387	339	396	453	510
Prior Year Adjustments	2	1					
Adjusted Balance Forward	335	160	387	339	396	453	510

Receipts:

Departmental Earnings	771	743	868	753	753	753	753
Investment Income	21	19	11	19	19	19	19
Other			46	25	25	25	25
Total Receipts	792	762	925	797	797	797	797

Transfers from Other Funds:

General Fund						-	-
Special Revenue Fund	-	408				-	-
Capital Projects Fund						-	-
Agriculture Fund						-	-
Federal Fund		2				-	-
Gift Fund						-	-
Total Transfers From other Funds:	-	410	-	-	-	-	-

Total Resources Available

1,127	1,332	1,312	1,136	1,193	1,250	1,307
--------------	--------------	--------------	--------------	--------------	--------------	--------------

Actual & Estimated Uses:

Expenditures:

MDA-Agronomy & Plant Protection	904	875	909	676	676	676	676
MDA-Laboratory Services	64	70	64	64	64	64	64
Total Expenditures	968	945	973	740	740	740	740

Transfers to Other Funds:

General Fund				-	-	-	-
Agriculture Fund	-	-	-	-	-	-	-
Special Revenue Fund	-	-	-	-	-	-	-
Debt Service Fund				-	-	-	-
Total Transfers:	-	-	-	-	-	-	-

Total Uses:

968	945	973	740	740	740	740
------------	------------	------------	------------	------------	------------	------------

Balance Forward

159	387	339	396	453	510	567
------------	------------	------------	------------	------------	------------	------------

Department of Agriculture
Agricultural Fund Statement

Pesticide Regulatory Account

M.S. 18B.05. Subd. 1

1100-133/1600-133

Actual & Estimated Resources

Balance Forward:

	<u>Actual FY 2001</u>	<u>Actual FY 2002</u>	<u>Actual FY 2003</u>	<u>MAPs FY 2004</u>	<u>Conf FY 2005</u>	<u>Projected FY 2006</u>	<u>Projected FY 2007</u>
Balance Forward from Prior Year	3,550	3,545	3,679	3,409	3,404	3,404	3,404
Prior Year Adjustments	6	1					
Adjusted Balance Forward	3,556	3,546	3,679	3,409	3,404	3,404	3,404

Receipts:

Departmental Earnings	4,988	5,132	4,958	4,809	4,809	4,809	4,809
Investment Income	205	123	79	123	123	123	123
Other			149	143	143	143	143
Total Receipts	5,193	5,255	5,186	5,075	5,075	5,075	5,075

Transfers from Other Funds:

General Fund						-	-
Special Revenue Fund	48					-	-
Capital Projects Fund						-	-
Agriculture Fund						-	-
Federal Fund		21				-	-
Gift Fund						-	-
Total Transfers From other Funds:	48	21	-	-	-	-	-

Total Resources Available

	8,797	8,822	8,865	8,484	8,479	8,479	8,479
--	--------------	--------------	--------------	--------------	--------------	--------------	--------------

Actual & Estimated Uses:

Expenditures:

MDA-Agronomy & Plant Protection	3,745	3,539	3,862	4,325	4,325	4,325	4,325
MDA-Laboratory Services	707	804	794	755	750	750	750
Total Expenditures	4,452	4,343	4,656	5,080	5,075	5,075	5,075

Transfers to Other Funds:

General Fund				-	-	-	-
Agriculture Fund-M.S. 18B.26, subd 3	-	600	600	-	-	-	-
Special Revenue Fund-AURI	800	200	200	-	-	-	-
Debt Service Fund				-	-	-	-
Total Transfers:	800	800	800	-	-	-	-

Total Uses:

	5,252	5,143	5,456	5,080	5,075	5,075	5,075
--	--------------	--------------	--------------	--------------	--------------	--------------	--------------

Balance Forward

	3,545	3,679	3,409	3,404	3,404	3,404	3,404
--	--------------	--------------	--------------	--------------	--------------	--------------	--------------

Department of Agriculture
Agricultural Fund Statement

\$ in Thousands

Ag Chemical Response & Reimbursement Account

M.S. 18E.03

1100-135

Actual & Estimated Resources

Balance Forward:

	<u>Actual FY 2001</u>	<u>Actual FY 2002</u>	<u>Actual FY 2003</u>	<u>MAPs FY 2004</u>	<u>Conf FY 2005</u>	<u>Projected FY 2006</u>	<u>Projected FY 2007</u>
Balance Forward from Prior Year	1,916	1,268	991	1,536	1,475	1,414	1,353
Prior Year Adjustments	-	-	-	-	-	-	-
Adjusted Balance Forward	1,916	1,268	991	1,536	1,475	1,414	1,353

Receipts:

Departmental Earnings	1,881	2,246	2,363	1,782	1,782	1,782	1,782
Investment Income	95	43	24	43	43	43	43
Other	-	-	-	-	-	-	-
Total Receipts	1,976	2,289	2,387	1,825	1,825	1,825	1,825

Transfers from Other Funds:

General Fund	-	-	-	-	-	-	-
Special Revenue Fund	-	-	-	-	-	-	-
Capital Projects Fund	-	-	-	-	-	-	-
Agriculture Fund	-	-	-	-	-	-	-
Federal Fund	-	-	-	-	-	-	-
Gift Fund	-	-	-	-	-	-	-
Total Transfers From other Funds:	-	-	-	-	-	-	-

Total Resources Available

3,892	3,557	3,378	3,361	3,300	3,239	3,178
--------------	--------------	--------------	--------------	--------------	--------------	--------------

Actual & Estimated Uses:

Expenditures:

MDA-Agronomy & Plant Protection	2,624	2,566	1,842	1,886	1,886	1,886	1,886
MDA-Laboratory Services	-	-	-	-	-	-	-
Total Expenditures	2,624	2,566	1,842	1,886	1,886	1,886	1,886

Transfers to Other Funds:

General Fund	-	-	-	-	-	-	-
Agriculture Fund-Waste Pesticide	-	-	-	-	-	-	-
Special Revenue Fund-AURI	-	-	-	-	-	-	-
Debt Service Fund	-	-	-	-	-	-	-
Total Transfers:	-	-	-	-	-	-	-

Total Uses:

2,624	2,566	1,842	1,886	1,886	1,886	1,886
--------------	--------------	--------------	--------------	--------------	--------------	--------------

Balance Forward

1,268	991	1,536	1,475	1,414	1,353	1,292
--------------	------------	--------------	--------------	--------------	--------------	--------------

Department of Agriculture
Agricultural Fund Statement

\$ in Thousands

Seed Inspection Account

M.S. 21.92
1100-403/1600-403

Actual & Estimated Resources

Balance Forward:

	<u>Actual FY 2001</u>	<u>Actual FY 2002</u>	<u>Actual FY 2003</u>	<u>MAPs FY 2004</u>	<u>Conf FY 2005</u>	<u>Projected FY 2006</u>	<u>Projected FY 2007</u>
Balance Forward from Prior Year	425	378	404	325	303	272	241
Prior Year Adjustments	-	-	-	-	-	-	-
Adjusted Balance Forward	425	378	404	325	303	272	241

Receipts:

Departmental Earnings	705	770	713	847	847	847	847
Investment Income	24	13	8	13	13	13	13
Other	-	-	-	-	-	-	-
Total Receipts	729	783	721	860	860	860	860

Transfers from Other Funds:

General Fund	-	-	-	-	-	-	-
Special Revenue Fund	-	-	-	-	-	-	-
Capital Projects Fund	-	-	-	-	-	-	-
Agriculture Fund	-	-	-	-	-	-	-
Federal Fund	-	-	-	-	-	-	-
Gift Fund	-	-	-	-	-	-	-
Total Transfers From other Funds:	-	-	-	-	-	-	-

Total Resources Available

	1,154	1,161	1,125	1,185	1,163	1,132	1,101
--	--------------	--------------	--------------	--------------	--------------	--------------	--------------

Actual & Estimated Uses:

Expenditures:

MDA-Agronomy & Plant Protection	285	329	329	490	499	499	499
MDA-Laboratory Services	491	428	471	392	392	392	392
Total Expenditures	776	757	800	882	891	891	891

Transfers to Other Funds:

General Fund	-	-	-	-	-	-	-
Agriculture Fund-Waste Pesticide	-	-	-	-	-	-	-
Special Revenue Fund-AURI	-	-	-	-	-	-	-
Debt Service Fund	-	-	-	-	-	-	-
Total Transfers:	-	-	-	-	-	-	-

Total Uses:

	776	757	800	882	891	891	891
--	------------	------------	------------	------------	------------	------------	------------

Balance Forward

	378	404	325	303	272	241	210
--	------------	------------	------------	------------	------------	------------	------------

Department of Agriculture
Agricultural Fund Statement

\$ in Thousands

Nursery-Phytosanitary Account
new M.S. 18.541
1100-147

Actual & Estimated Resources

Balance Forward:

	<u>Actual FY 2001</u>	<u>Actual FY 2002</u>	<u>Actual FY 2003</u>	<u>MAPs FY 2004</u>	<u>Conf FY 2005</u>	<u>Projected FY 2006</u>	<u>Projected FY 2007</u>
Balance Forward from Prior Year	-	-	-	-	144	318	492
Prior Year Adjustments	-	-	-	-	-	-	-
Adjusted Balance Forward	-	-	-	-	144	318	492

Receipts:

Departmental Earnings	-	-	-	990	1,020	1,020	1,020
Investment Income	-	-	-	-	-	-	-
Other	-	-	-	-	-	-	-
Total Receipts	-	-	-	990	1,020	1,020	1,020

Transfers from Other Funds:

General Fund	-	-	-	-	-	-	-
Special Revenue Fund	-	-	-	-	-	-	-
Capital Projects Fund	-	-	-	-	-	-	-
Agriculture Fund-M.S. 18B.26, subd 3	-	-	-	-	-	-	-
Federal Fund	-	-	-	-	-	-	-
Gift Fund	-	-	-	-	-	-	-
Total Transfers From other Funds:	-	-	-	-	-	-	-

Total Resources Available

-	-	-	990	1,164	1,338	1,512
---	---	---	-----	-------	-------	-------

Actual & Estimated Uses:

Expenditures:

MDA-Agronomy & Plant Protection	-	-	-	846	846	846	846
Total Expenditures	-	-	-	846	846	846	846

Transfers to Other Funds:

General Fund	-	-	-	-	-	-	-
Agriculture Fund	-	-	-	-	-	-	-
Special Revenue Fund	-	-	-	-	-	-	-
Debt Service Fund	-	-	-	-	-	-	-
Total Transfers:	-	-	-	-	-	-	-

Total Uses:

-	-	-	846	846	846	846
---	---	---	-----	-----	-----	-----

Balance Forward

-	-	-	144	318	492	666
---	---	---	-----	-----	-----	-----

Department of Agriculture
Agricultural Fund Statement

\$ in Thousands

Dairy Services Account

M.S. 32.394 Subd. 9

1100-116/1600-116

Actual & Estimated Resources

Balance Forward:

	<u>Actual FY 2001</u>	<u>Actual FY 2002</u>	<u>Actual FY 2003</u>	<u>MAPs FY 2004</u>	<u>Conf FY 2005</u>	<u>Projected FY 2006</u>	<u>Projected FY 2007</u>
Balance Forward from Prior Year	211	173	159	551	583	539	495
Prior Year Adjustments	3		1				
Adjusted Balance Forward	214	173	160	551	583	539	495

Receipts:

Departmental Earnings	1,355	1,677	1,889	1,836	1,780	1,780	1,780
Investment Income	24	13	7	6	3	3	3
Other			-	-	-	-	-
Total Receipts	1,379	1,690	1,896	1,842	1,783	1,783	1,783

Transfers from Other Funds:

General Fund	125					-	-
Special Revenue Fund	-					-	-
Capital Projects Fund						-	-
Agriculture Fund						-	-
Federal Fund		-				-	-
Gift Fund						-	-
Total Transfers From other Funds:	125	-	-	-	-	-	-

Total Resources Available

	1,718	1,863	2,056	2,393	2,366	2,322	2,278
--	--------------	--------------	--------------	--------------	--------------	--------------	--------------

Actual & Estimated Uses:

Expenditures:

MDA-Dairy & Food Inspection	1,426	1,523	1,321	1,631	1,649	1,649	1,649
MDA-Laboratory Services	119	181	184	179	178	178	178
Total Expenditures	1,545	1,704	1,505	1,810	1,827	1,827	1,827

Transfers to Other Funds:

General Fund				-	-	-	-
Agriculture Fund	-	-	-	-	-	-	-
Special Revenue Fund	-	-	-	-	-	-	-
Debt Service Fund				-	-	-	-
Total Transfers:	-	-	-	-	-	-	-

Total Uses:

	1,545	1,704	1,505	1,810	1,827	1,827	1,827
--	--------------	--------------	--------------	--------------	--------------	--------------	--------------

Balance Forward

	173	159	551	583	539	495	451
--	------------	------------	------------	------------	------------	------------	------------

Department of Agriculture
Agricultural Fund Statement

\$ in Thousands

Food Handler Reinspection Account

M.S. 28A.085

1400-142/1600-142

Actual & Estimated Resources

Balance Forward:

	<u>Actual FY 2001</u>	<u>Actual FY 2002</u>	<u>Actual FY 2003</u>	<u>MAPs FY 2004</u>	<u>Conf FY 2005</u>	<u>Projected FY 2006</u>	<u>Projected FY 2007</u>
Balance Forward from Prior Year	-	-	135	134	130	125	120
Prior Year Adjustments	-	-	-	-	-	-	-
Adjusted Balance Forward	-	-	135	134	130	125	120

Receipts:

Departmental Earnings	-	2	1	115	115	115	115
Investment Income	-	-	3	1	1	1	1
Other	-	-	-	-	-	-	-
Total Receipts	-	2	4	116	116	116	116

Transfers from Other Funds:

General Fund	-	-	-	-	-	-	-
Special Revenue Fund	-	141	-	-	-	-	-
Capital Projects Fund	-	-	-	-	-	-	-
Agriculture Fund	-	-	-	-	-	-	-
Federal Fund	-	-	-	-	-	-	-
Gift Fund	-	-	-	-	-	-	-
Total Transfers From other Funds:	-	141	-	-	-	-	-

Total Resources Available

-	143	139	250	246	241	236
---	-----	-----	-----	-----	-----	-----

Actual & Estimated Uses:

Expenditures:

MDA-Dairy & Food Inspection	-	8	4	98	98	98	98
MDA-Laboratory Services	-	-	1	22	23	23	23
Total Expenditures	-	8	5	120	121	121	121

Transfers to Other Funds:

General Fund	-	-	-	-	-	-	-
Agriculture Fund	-	-	-	-	-	-	-
Special Revenue Fund	-	-	-	-	-	-	-
Debt Service Fund	-	-	-	-	-	-	-
Total Transfers:	-	-	-	-	-	-	-

Total Uses:

-	8	5	120	121	121	121
---	---	---	-----	-----	-----	-----

Balance Forward

-	135	134	130	125	120	115
---	-----	-----	-----	-----	-----	-----

Department of Agriculture
Agricultural Fund Statement

\$ in Thousands

Egg Law Inspection

M.S. 29.22

1400--118

Actual & Estimated Resources

Balance Forward:

	<u>Actual FY 2001</u>	<u>Actual FY 2002</u>	<u>Actual FY 2003</u>	<u>MAPs FY 2004</u>	<u>Conf FY 2005</u>	<u>Projected FY 2006</u>	<u>Projected FY 2007</u>
Balance Forward from Prior Year	28	30	34	56	53	50	47
Prior Year Adjustments	-	-	-	-	-	-	-
Adjusted Balance Forward	28	30	34	56	53	50	47

Receipts:

Departmental Earnings	22	20	26	30	30	30	30
Investment Income	-	-	-	-	-	-	-
Other	-	-	-	-	-	-	-
Total Receipts	22	20	26	30	30	30	30

Transfers from Other Funds:

General Fund	-	-	-	-	-	-	-
Special Revenue Fund	-	-	-	-	-	-	-
Capital Projects Fund	-	-	-	-	-	-	-
Agriculture Fund	-	-	-	-	-	-	-
Federal Fund	-	-	-	-	-	-	-
Gift Fund	-	-	-	-	-	-	-
Total Transfers From other Funds:	-	-	-	-	-	-	-

Total Resources Available

50	50	60	86	83	80	77
-----------	-----------	-----------	-----------	-----------	-----------	-----------

Actual & Estimated Uses:

Expenditures:

MDA-Dairy & Food Inspection	20	16	4	33	33	33	33
Total Expenditures	20	16	4	33	33	33	33

Transfers to Other Funds:

General Fund	-	-	-	-	-	-	-
Agriculture Fund	-	-	-	-	-	-	-
Special Revenue Fund	-	-	-	-	-	-	-
Debt Service Fund	-	-	-	-	-	-	-
Total Transfers:	-	-	-	-	-	-	-

Total Uses:

20	16	4	33	33	33	33
-----------	-----------	----------	-----------	-----------	-----------	-----------

Balance Forward

30	34	56	53	50	47	44
-----------	-----------	-----------	-----------	-----------	-----------	-----------

Department of Agriculture
Agricultural Fund Statement

\$ in Thousands

Eurasian Wild Pig Account

	<u>Actual FY 2001</u>	<u>Actual FY 2002</u>	<u>Actual FY 2003</u>	<u>MAPs FY 2004</u>	<u>Conf FY 2005</u>	<u>Projected FY 2006</u>	<u>Projected FY 2007</u>
Actual & Estimated Resources							
Balance Forward:							
Balance Forward from Prior Year	1	1	-	-	-	-	-
Prior Year Adjustments	-	-	-	-	-	-	-
Adjusted Balance Forward	1	1	-	-	-	-	-
Receipts:							
Departmental Earnings	-	-	-	-	-	-	-
Investment Income	-	-	-	-	-	-	-
Other	-	-	-	-	-	-	-
Total Receipts	-	-	-	-	-	-	-
Transfers from Other Funds:							
General Fund	-	-	-	-	-	-	-
Special Revenue Fund	-	-	-	-	-	-	-
Capital Projects Fund	-	-	-	-	-	-	-
Agriculture Fund	-	-	-	-	-	-	-
Federal Fund	-	-	-	-	-	-	-
Gift Fund	-	-	-	-	-	-	-
Total Transfers From other Funds:	-	-	-	-	-	-	-
Total Resources Available	1	1	-	-	-	-	-
Actual & Estimated Uses:							
Expenditures:							
Department of Agriculture	-	-	-	-	-	-	-
Total Expenditures	-	-	-	-	-	-	-
Transfers to Other Funds:							
General Fund	-	1	-	-	-	-	-
Agriculture Fund	-	-	-	-	-	-	-
Special Revenue Fund	-	-	-	-	-	-	-
Debt Service Fund	-	-	-	-	-	-	-
Total Transfers:	-	1	-	-	-	-	-
Total Uses:	-	1	-	-	-	-	-
Balance Forward	1	-	-	-	-	-	-

Department of Agriculture
Agricultural Fund Statement

\$ in Thousands

Food Handler Plan Review Account

M.S. 28A.082 Subd. 2

1400-110

Actual & Estimated Resources

Balance Forward:

	<u>Actual FY 2001</u>	<u>Actual FY 2002</u>	<u>Actual FY 2003</u>	<u>MAPs FY 2004</u>	<u>Conf FY 2005</u>	<u>Projected FY 2006</u>	<u>Projected FY 2007</u>
Balance Forward from Prior Year	-	-	23	18	16	14	12
Prior Year Adjustments	-	-	-	-	-	-	-
Adjusted Balance Forward	-	-	23	18	16	14	12

Receipts:

Departmental Earnings	-	50	60	50	50	50	50
Investment Income	-	-	-	-	-	-	-
Other	-	-	-	-	-	-	-
Total Receipts	-	50	60	50	50	50	50

Transfers from Other Funds:

General Fund	-	-	-	-	-	-	-
Special Revenue Fund	-	24	-	-	-	-	-
Capital Projects Fund	-	-	-	-	-	-	-
Agriculture Fund	-	-	-	-	-	-	-
Federal Fund	-	-	-	-	-	-	-
Gift Fund	-	-	-	-	-	-	-
Total Transfers From other Funds:	-	24	-	-	-	-	-

Total Resources Available

-	74	83	68	66	64	62
---	----	----	----	----	----	----

Actual & Estimated Uses:

Expenditures:

MDA-Dairy & Food Inspection	-	51	65	52	52	52	52
Total Expenditures	-	51	65	52	52	52	52

Transfers to Other Funds:

General Fund	-	-	-	-	-	-	-
Agriculture Fund	-	-	-	-	-	-	-
Special Revenue Fund	-	-	-	-	-	-	-
Debt Service Fund	-	-	-	-	-	-	-
Total Transfers:	-	-	-	-	-	-	-

Total Uses:

-	51	65	52	52	52	52
---	----	----	----	----	----	----

Balance Forward

-	23	18	16	14	12	10
---	----	----	----	----	----	----

Department of Agriculture
Agricultural Fund Statement

\$ in Thousands

Commercial Canning Account

M.S. 31.39 Subd. 2

1400-115

Actual & Estimated Resources

Balance Forward:

	<u>Actual FY 2001</u>	<u>Actual FY 2002</u>	<u>Actual FY 2003</u>	<u>MAPs FY 2004</u>	<u>Conf FY 2005</u>	<u>Projected FY 2006</u>	<u>Projected FY 2007</u>
Balance Forward from Prior Year	-	-	115	181	183	185	187
Prior Year Adjustments	-	-	-	-	-	-	-
Adjusted Balance Forward	-	-	115	181	183	185	187

Receipts:

Departmental Earnings	-	81	100	81	81	81	81
Investment Income	-	-	-	-	-	-	-
Other	-	-	-	-	-	-	-
Total Receipts	-	81	100	81	81	81	81

Transfers from Other Funds:

General Fund	-	-	-	-	-	-	-
Special Revenue Fund	-	69	-	-	-	-	-
Capital Projects Fund	-	-	-	-	-	-	-
Agriculture Fund	-	-	-	-	-	-	-
Federal Fund	-	-	-	-	-	-	-
Gift Fund	-	-	-	-	-	-	-
Total Transfers From other Funds:	-	69	-	-	-	-	-

Total Resources Available

-	150	215	262	264	266	268
---	-----	-----	-----	-----	-----	-----

Actual & Estimated Uses:

Expenditures:

MDA-Dairy & Food Inspection	-	35	34	79	79	79	79
Total Expenditures	-	35	34	79	79	79	79

Transfers to Other Funds:

General Fund	-	-	-	-	-	-	-
Agriculture Fund	-	-	-	-	-	-	-
Special Revenue Fund	-	-	-	-	-	-	-
Debt Service Fund	-	-	-	-	-	-	-
Total Transfers:	-	-	-	-	-	-	-

Total Uses:

-	35	34	79	79	79	79
---	----	----	----	----	----	----

Balance Forward

-	115	181	183	185	187	189
---	-----	-----	-----	-----	-----	-----

Department of Agriculture
Agricultural Fund Statement

\$ in Thousands

Beverage Inspection Account

M.S. 34.07

1400-134

Actual & Estimated Resources

Balance Forward:

	<u>Actual FY 2001</u>	<u>Actual FY 2002</u>	<u>Actual FY 2003</u>	<u>MAPs FY 2004</u>	<u>Conf FY 2005</u>	<u>Projected FY 2006</u>	<u>Projected FY 2007</u>
Balance Forward from Prior Year	-	-	38	41	39	37	35
Prior Year Adjustments	-	-	-	-	-	-	-
Adjusted Balance Forward	-	-	38	41	39	37	35

Receipts:

Departmental Earnings	-	11	13	13	13	13	13
Investment Income	-	-	-	-	-	-	-
Other	-	-	-	-	-	-	-
Total Receipts	-	11	13	13	13	13	13

Transfers from Other Funds:

General Fund	-	-	-	-	-	-	-
Special Revenue Fund	-	35	-	-	-	-	-
Capital Projects Fund	-	-	-	-	-	-	-
Agriculture Fund	-	-	-	-	-	-	-
Federal Fund	-	-	-	-	-	-	-
Gift Fund	-	-	-	-	-	-	-
Total Transfers From other Funds:	-	35	-	-	-	-	-

Total Resources Available

-	46	51	54	52	50	48
---	----	----	----	----	----	----

Actual & Estimated Uses:

Expenditures:

MDA-Dairy & Food Inspection	-	8	10	15	15	15	15
Total Expenditures	-	8	10	15	15	15	15

Transfers to Other Funds:

General Fund	-	-	-	-	-	-	-
Agriculture Fund	-	-	-	-	-	-	-
Special Revenue Fund	-	-	-	-	-	-	-
Debt Service Fund	-	-	-	-	-	-	-
Total Transfers:	-	-	-	-	-	-	-

Total Uses:

-	8	10	15	15	15	15
---	---	----	----	----	----	----

Balance Forward

-	38	41	39	37	35	33
---	----	----	----	----	----	----

Department of Agriculture
Agricultural Fund Statement

\$ in Thousands

Laboratory Services Account

M.S. 17.85

1600-104

Actual & Estimated Resources

Balance Forward:

	<u>Actual FY 2001</u>	<u>Actual FY 2002</u>	<u>Actual FY 2003</u>	<u>MAPs FY 2004</u>	<u>Conf FY 2005</u>	<u>Projected FY 2006</u>	<u>Projected FY 2007</u>
Balance Forward from Prior Year	68	138	134	151	68	68	68
Prior Year Adjustments	-	-	-	-	-	-	-
Adjusted Balance Forward	68	138	134	151	68	68	68

Receipts:

Departmental Earnings	65	69	92	290	300	300	300
Investment Income	4	1	1	1	1	1	1
Other	-	-	-	-	-	-	-
Total Receipts	69	70	93	291	301	301	301

Transfers from Other Funds:

General Fund	-	-	-	-	-	-	-
Special Revenue Fund	1	-	-	-	-	-	-
Capital Projects Fund	-	-	-	-	-	-	-
Agriculture Fund	-	-	-	-	-	-	-
Federal Fund	-	-	-	-	-	-	-
Gift Fund	-	-	-	-	-	-	-
Total Transfers From other Funds:	1	-	-	-	-	-	-

Total Resources Available

	138	208	227	442	369	369	369
--	------------	------------	------------	------------	------------	------------	------------

Actual & Estimated Uses:

Expenditures:

MDA-Laboratory Services	-	74	76	374	301	301	301
Total Expenditures	-	74	76	374	301	301	301

Transfers to Other Funds:

General Fund	-	-	-	-	-	-	-
Agriculture Fund	-	-	-	-	-	-	-
Special Revenue Fund	-	-	-	-	-	-	-
Debt Service Fund	-	-	-	-	-	-	-
Total Transfers:	-	-	-	-	-	-	-

Total Uses:

	-	74	76	374	301	301	301
--	----------	-----------	-----------	------------	------------	------------	------------

Balance Forward

	138	134	151	68	68	68	68
--	------------	------------	------------	-----------	-----------	-----------	-----------

Department of Agriculture
Agricultural Fund Statement

\$ in Thousands

Seed Potato Inspection Account
M.S. 21.115
1700-106

Actual & Estimated Resources

Balance Forward:

	<u>Actual FY 2001</u>	<u>Actual FY 2002</u>	<u>Actual FY 2003</u>	<u>MAPs FY 2004</u>	<u>Conf FY 2005</u>	<u>Projected FY 2006</u>	<u>Projected FY 2007</u>
Balance Forward from Prior Year	184	94	86	126	104	83	62
Prior Year Adjustments	-	-	-	-	-	-	-
Adjusted Balance Forward	184	94	86	126	104	83	62

Receipts:

Departmental Earnings	218	283	336	270	270	270	270
Investment Income	8	3	2	3	3	3	3
Other	-	-	-	-	-	-	-
Total Receipts	226	286	338	273	273	273	273

Transfers from Other Funds:

General Fund	-	-	-	-	-	-	-
Special Revenue Fund	-	-	-	-	-	-	-
Capital Projects Fund	-	-	-	-	-	-	-
Agriculture Fund	-	-	-	-	-	-	-
Federal Fund	-	-	-	-	-	-	-
Gift Fund	-	-	-	-	-	-	-
Total Transfers From other Funds:	-	-	-	-	-	-	-

Total Resources Available

	410	380	424	399	377	356	335
--	------------	------------	------------	------------	------------	------------	------------

Actual & Estimated Uses:

Expenditures:

MDA-Grain & Produce Inspection	303	281	285	282	282	282	282
	-	-	-	-	-	-	-
Total Expenditures	303	281	285	282	282	282	282

Transfers to Other Funds:

General Fund	-	-	-	-	-	-	-
Agriculture Fund	-	-	-	-	-	-	-
Special Revenue Fund	-	-	-	-	-	-	-
Debt Service Fund	13	13	13	13	12	12	12
Total Transfers:	13	13	13	13	12	12	12

Total Uses:

	316	294	298	295	294	294	294
--	------------	------------	------------	------------	------------	------------	------------

Balance Forward

	94	86	126	104	83	62	41
--	-----------	-----------	------------	------------	-----------	-----------	-----------

Department of Agriculture
Agricultural Fund Statement

\$ in Thousands

Grain Inspection Account

M.S. 17B.15 Subd. 1

1700-122

Actual & Estimated Resources

Balance Forward:

	<u>Actual FY 2001</u>	<u>Actual FY 2002</u>	<u>Actual FY 2003</u>	<u>MAPs FY 2004</u>	<u>Conf FY 2005</u>	<u>Projected FY 2006</u>	<u>Projected FY 2007</u>
Balance Forward from Prior Year	57	88	44	95	95	95	95
Prior Year Adjustments	-	-	-	-	-	-	-
Adjusted Balance Forward	57	88	44	95	95	95	95

Receipts:

Departmental Earnings	4,317	4,338	4,988	4,338	4,338	4,338	4,338
Investment Income	4	1	-	1	1	1	1
Other	-	-	-	-	-	-	-
Total Receipts	4,321	4,339	4,988	4,339	4,339	4,339	4,339

Transfers from Other Funds:

General Fund	-	-	-	-	-	-	-
Special Revenue Fund	-	-	-	-	-	-	-
Capital Projects Fund	-	-	-	-	-	-	-
Agriculture Fund	-	-	-	-	-	-	-
Federal Fund	-	-	-	-	-	-	-
Gift Fund	-	-	-	-	-	-	-
Total Transfers From other Funds:	-	-	-	-	-	-	-

Total Resources Available

4,378	4,427	5,032	4,434	4,434	4,434	4,434	4,434
--------------	--------------	--------------	--------------	--------------	--------------	--------------	--------------

Actual & Estimated Uses:

Expenditures:

MDA-Grain & Produce Inspection	4,290	4,383	4,937	4,339	4,339	4,339	4,339
Total Expenditures	4,290	4,383	4,937	4,339	4,339	4,339	4,339

Transfers to Other Funds:

General Fund	-	-	-	-	-	-	-
Agriculture Fund	-	-	-	-	-	-	-
Special Revenue Fund	-	-	-	-	-	-	-
Debt Service Fund	-	-	-	-	-	-	-
Total Transfers:	-	-	-	-	-	-	-

Total Uses:

4,290	4,383	4,937	4,339	4,339	4,339	4,339	4,339
--------------	--------------	--------------	--------------	--------------	--------------	--------------	--------------

Balance Forward

88	44	95	95	95	95	95	95
-----------	-----------	-----------	-----------	-----------	-----------	-----------	-----------

Department of Agriculture
Agricultural Fund Statement

\$ in Thousands

Fruit & Vegetable Inspection Account

M.S. 27.07, Subd. 6
1700-126

Actual & Estimated Resources

Balance Forward:

	<u>Actual FY 2001</u>	<u>Actual FY 2002</u>	<u>Actual FY 2003</u>	<u>MAPs FY 2004</u>	<u>Conf FY 2005</u>	<u>Projected FY 2006</u>	<u>Projected FY 2007</u>
Balance Forward from Prior Year	211	208	160	87	88	89	90
Prior Year Adjustments	-	-	-	-	-	-	-
Adjusted Balance Forward	211	208	160	87	88	89	90

Receipts:

Departmental Earnings	660	667	656	667	667	667	667
Investment Income	14	9	4	9	9	9	9
Other	-	-	-	-	-	-	-
Total Receipts	674	676	660	676	676	676	676

Transfers from Other Funds:

General Fund	-	-	-	-	-	-	-
Special Revenue Fund	-	-	-	-	-	-	-
Capital Projects Fund	-	-	-	-	-	-	-
Agriculture Fund	-	-	-	-	-	-	-
Federal Fund	-	-	-	-	-	-	-
Gift Fund	-	-	-	-	-	-	-
Total Transfers From other Funds:	-	-	-	-	-	-	-

Total Resources Available

	885	884	820	763	764	765	766
--	------------	------------	------------	------------	------------	------------	------------

Actual & Estimated Uses:

Expenditures:

MDA-Grain & Produce Inspection	650	698	706	649	649	649	649
	-	-	-	-	-	-	-
Total Expenditures	650	698	706	649	649	649	649

Transfers to Other Funds:

General Fund	-	-	-	-	-	-	-
Agriculture Fund	-	-	-	-	-	-	-
Special Revenue Fund	-	-	-	-	-	-	-
Debt Service Fund	27	26	27	26	26	26	26
Total Transfers:	27	26	27	26	26	26	26

Total Uses:

	677	724	733	675	675	675	675
--	------------	------------	------------	------------	------------	------------	------------

Balance Forward

	208	160	87	88	89	90	91
--	------------	------------	-----------	-----------	-----------	-----------	-----------

Department of Agriculture
Agricultural Fund Statement

\$ in Thousands

Livestock Weighing Account

M.S. 17A.11

2300-103

Actual & Estimated Resources

Balance Forward:

	<u>Actual FY 2001</u>	<u>Actual FY 2002</u>	<u>Actual FY 2003</u>	<u>MAPs FY 2004</u>	<u>Conf FY 2005</u>	<u>Projected FY 2006</u>	<u>Projected FY 2007</u>
Balance Forward from Prior Year	905	807	905	968	950	932	914
Prior Year Adjustments	-	-	-	-	-	-	-
Adjusted Balance Forward	905	807	905	968	950	932	914

Receipts:

Departmental Earnings	455	534	548	534	534	534	534
Investment Income	-	-	-	-	-	-	-
Other	-	-	-	-	-	-	-
Total Receipts	455	534	548	534	534	534	534

Transfers from Other Funds:

General Fund						-	-
Special Revenue Fund	-					-	-
Capital Projects Fund						-	-
Agriculture Fund						-	-
Federal Fund		-				-	-
Gift Fund						-	-
Total Transfers From other Funds:	-	-	-	-	-	-	-

Total Resources Available

	1,360	1,341	1,453	1,502	1,484	1,466	1,448
--	--------------	--------------	--------------	--------------	--------------	--------------	--------------

Actual & Estimated Uses:

Expenditures:

MDA-Ag Marketing Services	553	436	485	552	552	552	552
	-	-	-	-	-	-	-
Total Expenditures	553	436	485	552	552	552	552

Transfers to Other Funds:

General Fund				-	-	-	-
Agriculture Fund	-	-	-	-	-	-	-
Special Revenue Fund	-	-	-	-	-	-	-
Debt Service Fund				-	-	-	-
Total Transfers:	-	-	-	-	-	-	-

Total Uses:

	553	436	485	552	552	552	552
--	------------	------------	------------	------------	------------	------------	------------

Balance Forward

	807	905	968	950	932	914	896
--	------------	------------	------------	------------	------------	------------	------------

Department of Agriculture
Agricultural Fund Statement

\$ in Thousands

Promotion Councils Account

M.S. 17.59 Subd. 5

2300-121

Actual & Estimated Resources

Balance Forward:

	<u>Actual FY 2001</u>	<u>Actual FY 2002</u>	<u>Actual FY 2003</u>	<u>MAPs FY 2004</u>	<u>Conf FY 2005</u>	<u>Projected FY 2006</u>	<u>Projected FY 2007</u>
Balance Forward from Prior Year	29	21	17	20	-	-	-
Prior Year Adjustments	-	-	-	-	-	-	-

Adjusted Balance Forward

Receipts:

Departmental Earnings	90	92	102	92	92	92	92
Investment Income	2	1	1	1	1	1	1
Other	-	-	-	-	-	-	-
Total Receipts	92	93	103	93	93	93	93

Transfers from Other Funds:

General Fund	-	-	-	-	-	-	-
Special Revenue Fund	-	-	-	-	-	-	-
Capital Projects Fund	-	-	-	-	-	-	-
Agriculture Fund	-	-	-	-	-	-	-
Federal Fund	-	-	-	-	-	-	-
Gift Fund	-	-	-	-	-	-	-

Total Transfers From other Funds:

	-	-	-	-	-	-	-
--	---	---	---	---	---	---	---

Total Resources Available

Actual & Estimated Uses:

Expenditures:

MDA-Ag Marketing Services	100	97	100	113	93	93	93
	-	-	-	-	-	-	-
Total Expenditures	100	97	100	113	93	93	93

Transfers to Other Funds:

General Fund	-	-	-	-	-	-	-
Agriculture Fund	-	-	-	-	-	-	-
Special Revenue Fund	-	-	-	-	-	-	-
Debt Service Fund	-	-	-	-	-	-	-

Total Transfers:

	-	-	-	-	-	-	-
--	---	---	---	---	---	---	---

Total Uses:

	100	97	100	113	93	93	93
--	-----	----	-----	-----	----	----	----

Balance Forward

	21	17	20	-	-	-	-
--	----	----	----	---	---	---	---

Department of Agriculture
Agricultural Fund Statement

\$ in Thousands

Grain Buyers & Storage Account

M.S. 232.22, Subd. 3
2300-123

Actual & Estimated Resources

Balance Forward:

	<u>Actual FY 2001</u>	<u>Actual FY 2002</u>	<u>Actual FY 2003</u>	<u>MAPs FY 2004</u>	<u>Conf FY 2005</u>	<u>Projected FY 2006</u>	<u>Projected FY 2007</u>
Balance Forward from Prior Year	14	43	63	54	54	54	54
Prior Year Adjustments	-	-	-	-	-	-	-
Adjusted Balance Forward	14	43	63	54	54	54	54

Receipts:

Departmental Earnings	507	558	552	547	547	547	547
Investment Income	-	-	-	-	-	-	-
Other	-	-	-	-	-	-	-
Total Receipts	507	558	552	547	547	547	547

Transfers from Other Funds:

General Fund	-	-	-	-	-	-	-
Special Revenue Fund	-	-	-	-	-	-	-
Capital Projects Fund	-	-	-	-	-	-	-
Agriculture Fund	-	-	-	-	-	-	-
Federal Fund	-	-	-	-	-	-	-
Gift Fund	-	-	-	-	-	-	-
Total Transfers From other Funds:	-	-	-	-	-	-	-

Total Resources Available

Total Resources Available	521	601	615	601	601	601	601
----------------------------------	------------	------------	------------	------------	------------	------------	------------

Actual & Estimated Uses:

Expenditures:

MDA-Ag Marketing Services	478	538	561	547	547	547	547
	-	-	-	-	-	-	-
Total Expenditures	478	538	561	547	547	547	547

Transfers to Other Funds:

General Fund	-	-	-	-	-	-	-
Agriculture Fund	-	-	-	-	-	-	-
Special Revenue Fund	-	-	-	-	-	-	-
Debt Service Fund	-	-	-	-	-	-	-
Total Transfers:	-	-	-	-	-	-	-

Total Uses:

Total Uses:	478	538	561	547	547	547	547
--------------------	------------	------------	------------	------------	------------	------------	------------

Balance Forward

Balance Forward	43	63	54	54	54	54	54
------------------------	-----------	-----------	-----------	-----------	-----------	-----------	-----------

Department of Agriculture
Agricultural Fund Statement

\$ in Thousands

Minnesota Grown Labeling Account

M.S. 17.102, Subd. 4

2300-132

Actual & Estimated Resources

Balance Forward:

	<u>Actual FY 2001</u>	<u>Actual FY 2002</u>	<u>Actual FY 2003</u>	<u>MAPs FY 2004</u>	<u>Conf FY 2005</u>	<u>Projected FY 2006</u>	<u>Projected FY 2007</u>
Balance Forward from Prior Year	3	-	-	2	2	2	2
Prior Year Adjustments	-	-	-	-	-	-	-
Adjusted Balance Forward	3	-	-	2	2	2	2

Receipts:

Departmental Earnings	4	4	4	4	4	4	4
Investment Income	-	-	-	-	-	-	-
Other	-	-	-	-	-	-	-
Total Receipts	4	4	4	4	4	4	4

Transfers from Other Funds:

General Fund	-	-	-	-	-	-	-
Special Revenue Fund	-	-	-	-	-	-	-
Capital Projects Fund	-	-	-	-	-	-	-
Agriculture Fund	-	-	-	-	-	-	-
Federal Fund	-	-	-	-	-	-	-
Gift Fund	-	-	-	-	-	-	-
Total Transfers From other Funds:	-	-	-	-	-	-	-

Total Resources Available

7	4	4	6	6	6	6
----------	----------	----------	----------	----------	----------	----------

Actual & Estimated Uses:

Expenditures:

MDA-Ag Marketing Services	7	4	2	4	4	4	4
	-	-	-	-	-	-	-
Total Expenditures	7	4	2	4	4	4	4

Transfers to Other Funds:

General Fund	-	-	-	-	-	-	-
Agriculture Fund	-	-	-	-	-	-	-
Special Revenue Fund	-	-	-	-	-	-	-
Debt Service Fund	-	-	-	-	-	-	-
Total Transfers:	-	-	-	-	-	-	-

Total Uses:

7	4	2	4	4	4	4
----------	----------	----------	----------	----------	----------	----------

Balance Forward

-	-	2	2	2	2	2
----------	----------	----------	----------	----------	----------	----------

Department of Agriculture
Agricultural Fund Statements

\$ in Thousands

Minnesota Grown Matching Account

M.S. 17.109, Subd. 1
2300-157

Actual & Estimated Resources

Balance Forward:

	<u>Actual FY 2001</u>	<u>Actual FY 2002</u>	<u>Actual FY 2003</u>	<u>MAPs FY 2004</u>	<u>Conf FY 2005</u>	<u>Projected FY 2006</u>	<u>Projected FY 2007</u>
Balance Forward from Prior Year	-	2	9	9	8	7	6
Prior Year Adjustments	-						
Adjusted Balance Forward	-	2	9	9	8	7	6

Receipts:

Departmental Earnings	-	-	-	-	-	-	-
Investment Income	-	-	-	1	-	-	-
Other		18	18	18	19	19	19
Total Receipts	-	18	18	19	19	19	19

Transfers from Other Funds:

General Fund	71	71	71	71	71	71	71
Special Revenue Fund	-					-	-
Capital Projects Fund						-	-
Agriculture Fund						-	-
Federal Fund		-				-	-
Gift Fund		8				-	-
Total Transfers From other Funds:	71	79	71	71	71	71	71

Total Resources Available

	71	99	98	99	98	97	96
--	----	----	----	----	----	----	----

Actual & Estimated Uses:

Expenditures:

MDA-Ag Marketing Services	69	90	89	91	91	91	91
	-	-	-	-	-	-	-
Total Expenditures	69	90	89	91	91	91	91

Transfers to Other Funds:

General Fund				-	-	-	-
Agriculture Fund	-	-	-	-	-	-	-
Special Revenue Fund	-	-	-	-	-	-	-
Debt Service Fund				-	-	-	-
Total Transfers:	-	-	-	-	-	-	-

Total Uses:

	69	90	89	91	91	91	91
--	----	----	----	----	----	----	----

Balance Forward

	2	9	9	8	7	6	5
--	---	---	---	---	---	---	---

Department of Agriculture
Agricultural Fund Statement

\$ in Thousands

Minnesota Certification Account
M.S. 17.1025, Subd. 1
2300-201

Actual & Estimated Resources

Balance Forward:

	<u>Actual FY 2001</u>	<u>Actual FY 2002</u>	<u>Actual FY 2003</u>	<u>MAPs FY 2004</u>	<u>Conf FY 2005</u>	<u>Projected FY 2006</u>	<u>Projected FY 2007</u>
Balance Forward from Prior Year	-	-	-	3	13	13	13
Prior Year Adjustments	-	-	-	-	-	-	-
Adjusted Balance Forward	-	-	-	3	13	13	13

Receipts:

Departmental Earnings	-	-	3	10	10	10	10
Investment Income	-	-	-	-	-	-	-
Other	-	-	-	-	-	-	-
Total Receipts	-	-	3	10	10	10	10

Transfers from Other Funds:

General Fund	-	-	-	-	-	-	-
Special Revenue Fund	-	-	-	-	-	-	-
Capital Projects Fund	-	-	-	-	-	-	-
Agriculture Fund	-	-	-	-	-	-	-
Federal Fund	-	-	-	-	-	-	-
Gift Fund	-	-	-	-	-	-	-
Total Transfers From other Funds:	-	-	-	-	-	-	-

Total Resources Available

-	-	3	13	23	23	23
---	---	---	----	----	----	----

Actual & Estimated Uses:

Expenditures:

MDA-Ag Marketing Services	-	-	-	10	10	10	10
Total Expenditures	-	-	-	-	10	10	10

Transfers to Other Funds:

General Fund	-	-	-	-	-	-	-
Agriculture Fund	-	-	-	-	-	-	-
Special Revenue Fund	-	-	-	-	-	-	-
Debt Service Fund	-	-	-	-	-	-	-
Total Transfers:	-	-	-	-	-	-	-

Total Uses:

-	-	-	-	10	10	10
---	---	---	---	----	----	----

Balance Forward

-	-	3	13	13	13	13
---	---	---	----	----	----	----

Department of Agriculture
Agricultural Fund Statement

\$ in Thousands

Individual Sewage Treatment Systems Loans Account

M.S. 17.117, Subd. 5a
6800-180

	<u>Actual</u> <u>FY 2001</u>	<u>Actual</u> <u>FY 2002</u>	<u>Actual</u> <u>FY 2003</u>	<u>MAPs</u> <u>FY 2004</u>	<u>Conf</u> <u>FY 2005</u>	<u>Projected</u> <u>FY 2006</u>	<u>Projected</u> <u>FY 2007</u>
<u>Actual & Estimated Resources</u>							
Balance Forward:							
Balance Forward from Prior Year	-	-	105	-	27	27	27
Prior Year Adjustments	-	-	159	-	-	-	-
Adjusted Balance Forward	-	-	264	-	27	27	27
Receipts:							
Departmental Earnings	-	-	-	-	-	-	-
Investment Income	-	-	9	10	-	-	-
Other	-	-	48	17	-	-	-
Total Receipts	-	-	57	27	-	-	-
Transfers from Other Funds:							
General Fund	-	-	-	-	-	-	-
Special Revenue Fund	-	-	-	-	-	-	-
Capital Projects Fund	-	628	-	-	-	-	-
Agriculture Fund	-	-	-	-	-	-	-
Federal Fund	-	-	-	-	-	-	-
Gift Fund	-	-	-	-	-	-	-
Total Transfers From other Funds:	-	628	-	-	-	-	-
Total Resources Available	-	628	321	27	27	27	27
<u>Actual & Estimated Uses:</u>							
Expenditures:							
MDA-Ag Finance	-	523	321	-	-	-	-
Total Expenditures	-	523	321	-	-	-	-
Transfers to Other Funds:							
General Fund	-	-	-	-	-	-	-
Agriculture Fund	-	-	-	-	-	-	-
Special Revenue Fund	-	-	-	-	-	-	-
Debt Service Fund	-	-	-	-	-	-	-
Total Transfers:	-	-	-	-	-	-	-
Total Uses:	-	523	321	-	-	-	-
Balance Forward	-	105	-	27	27	27	27

Department of Agriculture
Agricultural Fund Statement

\$ in Thousands

Agricultural Best Management Practices 2000 Supplement

M.S. 17.117, Subd. 5a
6800-181

	<u>Actual</u> <u>FY 2001</u>	<u>Actual</u> <u>FY 2002</u>	<u>Actual</u> <u>FY 2003</u>	<u>MAPs</u> <u>FY 2004</u>	<u>Conf</u> <u>FY 2005</u>	<u>Projected</u> <u>FY 2006</u>	<u>Projected</u> <u>FY 2007</u>
<u>Actual & Estimated Resources</u>							
Balance Forward:							
Balance Forward from Prior Year	-	-	946	-	10	10	10
Prior Year Adjustments	-	-	44	-	-	-	-
Adjusted Balance Forward	-	-	990	-	10	10	10
Receipts:							
Departmental Earnings	-	-	-	-	-	-	-
Investment Income	-	-	23	-	-	-	-
Other	-	-	-	510	-	-	-
Total Receipts	-	-	23	510	-	-	-
Transfers from Other Funds:							
General Fund	-	-	-	-	-	-	-
Special Revenue Fund	-	-	-	-	-	-	-
Capital Projects Fund	-	1,000	-	-	-	-	-
Agriculture Fund	-	-	-	-	-	-	-
Federal Fund	-	-	-	-	-	-	-
Gift Fund	-	-	-	-	-	-	-
Total Transfers From other Funds:	-	1,000	-	-	-	-	-
Total Resources Available	-	1,000	1,013	510	10	10	10
<u>Actual & Estimated Uses:</u>							
Expenditures:							
MDA-Ag Finance	-	54	1,013	500	-	-	-
Total Expenditures	-	54	1,013	500	-	-	-
Transfers to Other Funds:							
General Fund	-	-	-	-	-	-	-
Agriculture Fund	-	-	-	-	-	-	-
Special Revenue Fund	-	-	-	-	-	-	-
Debt Service Fund	-	-	-	-	-	-	-
Total Transfers:	-	-	-	-	-	-	-
Total Uses:	-	54	1,013	500	-	-	-
Balance Forward	-	946	-	10	10	10	10

Department of Agriculture
Agricultural Fund Statement

\$ in Thousands

Agricultural Statistics Account

M.S. 17.038

6900-129

Actual & Estimated Resources

Balance Forward:

	<u>Actual FY 2001</u>	<u>Actual FY 2002</u>	<u>Actual FY 2003</u>	<u>MAPs FY 2004</u>	<u>Conf FY 2005</u>	<u>Projected FY 2006</u>	<u>Projected FY 2007</u>
Balance Forward from Prior Year	9	31	39	22	17	14	11
Prior Year Adjustments	-	-	-	-	-	-	-

Adjusted Balance Forward	9	31	39	22	17	14	11
---------------------------------	----------	-----------	-----------	-----------	-----------	-----------	-----------

Receipts:

Departmental Earnings	27	26	4	2	2	2	2
Investment Income	-	-	-	-	-	-	-
Other	-	-	-	-	-	-	-

Total Receipts	27	26	4	2	2	2	2
-----------------------	-----------	-----------	----------	----------	----------	----------	----------

Transfers from Other Funds:

General Fund						-	-
Special Revenue Fund	-					-	-
Capital Projects Fund						-	-
Agriculture Fund						-	-
Federal Fund		-				-	-
Gift Fund						-	-

Total Transfers From other Funds:	-	-	-	-	-	-	-
--	----------	----------	----------	----------	----------	----------	----------

Total Resources Available	36	57	43	24	19	16	13
----------------------------------	-----------	-----------	-----------	-----------	-----------	-----------	-----------

Actual & Estimated Uses:

Expenditures:

MDA-Admin Services/Ag Statistics	5	18	21	7	5	5	5
	-	-	-	-	-	-	-

Total Expenditures	5	18	21	7	5	5	5
---------------------------	----------	-----------	-----------	----------	----------	----------	----------

Transfers to Other Funds:

General Fund				-	-	-	-
Agriculture Fund	-	-	-	-	-	-	-
Special Revenue Fund	-	-	-	-	-	-	-
Debt Service Fund				-	-	-	-

Total Transfers:	-	-	-	-	-	-	-
-------------------------	----------	----------	----------	----------	----------	----------	----------

Total Uses:	5	18	21	7	5	5	5
--------------------	----------	-----------	-----------	----------	----------	----------	----------

Balance Forward	31	39	22	17	14	11	8
------------------------	-----------	-----------	-----------	-----------	-----------	-----------	----------

