

# Western Display Company

INCORPORATED

## Electric, Advertising and Commercial

## SIGNS

9/22/16

- [illegible]

THE LARGEST WESTERN MANUFACTURERS OF ALL CLASSES OF SIGNS

-2- Minn. St. Auto. Comm.

- 14. -- 20 ga. Open hearth O-P steel, full lead coat (40#)
- 15. -- 24 " Sheet aluminum.
- 16. -- 9 " Galvanized wire.

.....

**"TERNE" METAL**

is a mixture of 75% lead and 25% tin.

**"LEAD" COAT**

is a mixture of 85% lead and 15% tin.

We also quote on 15# and 25# mill coat terne metal covered under #9 and #10 (except as to weight) and on 25# full terne coat.

Full coated plates are sheared and punched before being plated at a temperature of 900° F.

**P R O C E S S**

All steel plates, after being terne or lead coated, shaped and embossed, are to be sand blasted.

The entire plate is to receive at least one coat of primer enamel, and the face is to have two additional coats of finishing enamel, after which numerals are colored.

After each application of enamel the plates are to be baked at a temperature to insure the best results.

-3- Minn. St. Auto. Comm.

### C O L O R S

Samples are submitted, but these are not intended to cover material and process of manufacture.

Quotations cover combination of any two colors shown.

NO.	BACKGROUND	NUMERALS	NO.	BACKGROUND	NUMERALS
1	Black	White	15	Brewster gr.D	White
2	"	Green	16	" "	Lemon
3	"	Primrose	17	" " L	White
4	"	Lemon	18	Cardinal	White
5	Brown	White	19	"	Primrose
6	"	Primrose	20	Raspberry	White
7	" D	White	21	"	Lemon
8	" D	Primrose	22	Chrome green	White
9	Brewster green	Orange	23	" "	Primrose
10	" "	White	24	Maize	Brown
11	" "	Primrose	25	Straw	Blue
12	" "	Lemon	26	Pearl grey	Blue
13	" " D	green	27	Slate	Orange
14	" " D	Orange	28	Slate	Lemon

-4- Minn. St. Auto. Comm.

PRICES and MAILING WEIGHT

Mailing weight covers one pair of plates 15" x 5" in size.

**AUTOMOBILE & DEALERS and MANUFACTURERS.**

(Edges Beaded)

										MAILING WEIGHT (Ounces)
									PER PAIR	
20	ga.	Mill coated terne metal (8# coat)	\$	.192						29
21	"	" " " " " "		.186						27
22	"	" " " " " "		.18						25
24	"	" " " " " "		.167						22
		For 15# terne coat, add per pair		.01						
	"	25# " " " " " "		.024						
20	"	O-H O-P steel, full coat (25# terne or 40# lead)		.24						30
21	"	" " " " " "		.234						28
22	"	" " " " " "		.228						26

(Edges Wired)

A. S. & W. 9 Gauge.

26	"							Mill coated terne metal (8# coat)	.224	24
27	"	" "	" "	" "	" "	" "	" "		.222	23
28	"	" "	" "	" "	" "	" "	" "		.221	22
								For 15# coat, add per pair	.01	
		" "	25#	" "	" "	" "	" "		.024	
26	"	O-H	O-P steel,	full coat	(25# terne or 40# lead )				.258	25
27	"	" "	" "	" "	" "	" "	" "		.255	23
28	"	" "	" "	" "	" "	" "	" "		.252	22

-5- Minn. St. Auto. Comm.

MOTORCYCLE PLATES

Mailing weight not to exceed 10 ounces.

(Edges Beaded)

20 to 24 ga. Mill coated terne metal (8# - 15# coat)	@ ea. \$	.06
20 " 24 " " " " " ( 25# coat )	@ ea.	.075
20 " 22 " O-H O-P steel (25# terne or 40# lead coat)	@ ea.	.075
24 " Sheet aluminum - satin finish with numerals embossed and edges beaded - - - - -	@ ea.	.12

If contract is awarded to us, we will be pleased  
to make up correct samples in the selected color combination  
for your final approval.

Enclosed please find certified check for \$

Thanking you for your consideration, we are

Yours very truly,

TRW-LMH

WESTERN DISPLAY CO.,

*J. W. Kummer*  
Pres.

# St. Paul Stamp Works

RUBBER AND METALLIC

ESTABLISHED 1870

STAMPS

OLDEST IN THE NORTHWEST

E. M. MELLGREN, Manager

ST. PAUL, MINN.

Sept. 22, 1916.

## BID ON AUTOMOBILE LICENSE PLATES

Hon. Julius Schmahl,  
Secretary of State,  
State Capitol,  
City.

Honorable Sir:

According to duly advertised specification we are pleased to tender the following quotations on Automobile License Tags:

140,000 Automobile Plates numbered consecutively from 1 to 140,000 duplicates as per samples #1 and #2 respectfully submitted at 25¢ per set of two. The above to be made of 26 guage steel with two coats of hard baked enamel.

140,000 of same as above like our samples #3 same as used by the State of Illinois in 22 or 26 guage at 30¢ per pair. These also to be made of steel as per samples and according to your specifications and to have two coats of hard baking enamel.

300 pair Dealer plates and 10 Pair Manufacturers plates at the above mentioned cost all of which is respectfully submitted.

ST. PAUL STAMP WORKS,

By *E. M. Mellgren*  
Manager.

# St. Paul Stamp Works

RUBBER AND METALLIC

ESTABLISHED 1870

**STAMPS**

OLDEST IN THE NORTHWEST

E. M. MELLGREN, Manager

ST. PAUL, MINN.

Sept. 22, 1916.

## BID ON MOTOR CYCLE LICENSE PLATES

Hon. Julius A. Schmahl,  
Secretary of State,  
State Capitol,  
City.

Honorable Sir:

According to duly advertised specification we are pleased to tender the following quotations on Motor Cycle License Plates:

10,000 single Motor Cycle plates numbered consecutively from 1 to 10,000 as per samples #1 submitted made of 26 guage steel with two coats of baked enamel at 12¢ each.

10,000 Aluminum Motor Cycle Tags as per sample #2 made according to specifications and numbered from 1 to 10,000 for 20¢ each. Additional tags each 30¢ of either style, per hundred the same price as quoted on the 10,000 lot.

These tags will be executed in a workman like manner, will be properly packed and delivered at the capitol all of which is respectfully submitted.

Certified check enclosed on our three bids for \$2,000.

ST. PAUL STAMP WORKS,

By *E. M. Mellgren*  
Manager.

# St. Paul Stamp Works

RUBBER AND METALLIC

ESTABLISHED 1870

STAMPS

OLDEST IN THE NORTHWEST

E. M. MELLGREN, Manager

ST. PAUL, MINN.

Sept. 22, 1916.

## BID ON CHAUFFEUR BADGES

Hon. Julius A. Schmahl,  
Secretary of State,  
State Capitol,  
City.

Honorable Sir:-

According to duly advertised specification  
we are pleased to tender the following quotations:

Chauffeur Badges made of 16 guage German Silver  
heavily nickel plated with three plates of nickel  
as per specifications and hard soldered with German  
Silver 14 guage pins, figures to be filled with  
baked hard enamel, not asphaltum @ \$35.00 per hundred  
as per diagrams submitted.

Chauffeur Badges made of 18 guage German Silver  
with two plates of nickel as per specifications and  
designs submitted, hard soldered with 16 guage German  
Silver pin, letters filled with baked hard enamel, not  
asphaltum @ \$25.00 per hundred.

Chauffeur Badges made of 18 guage German Silver  
with one plate of nickel as per specifications and  
designs, soft soldered with 16 guage German Silver  
pin, letters filled with baked hard enamel @ \$19.50  
per hundred

Chauffeur Badges made of 18 guage German Silver  
with light plate of nickel as per specifications and  
designs, soft soldered with 18 guage German Silver  
pin, letters filled with soft baking enamel @ \$13.50  
per hundred.

Respectfully submitted,  
ST. PAUL STAMP WORKS.



TELEPHONES SEELEY 2646

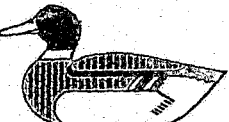
## THE GREENDUCK COMPANY

### MASTERCRAFTERS IN METAL

VAN BUREN AND HOYNE AVE. CHICAGO.

COINS  
RULES  
GAUGES  
MEDALS  
TROPHIES  
KEY TAGS  
KEY RINGS  
MATCH SAFES  
MATCH BOXES  
PAPER CUTTERS  
LETTER OPENERS  
AUTO LICENSE PLATES

WHITE METAL CASTING  
RADIATOR ORNAMENTS  
SOUVENIR SPOONS  
DESK CALENDARS  
BRASS ETCHING  
DESK CLOCKS  
EMBOSSING  
WATCH FOBS  
CUFF LINKS  
SCARF PINS  
BOOKMARKS  
HAT PINS



WHISK BROOM HOLDERS  
TOOTH BRUSH HOLDERS  
ASH RECEIVERS  
MATCH STANDS  
NAME PLATES  
UTILITY TOOLS  
TIE CLASPS  
STAMP BOXES  
ASH TRAYS  
PENTRAYS  
PENTRAYS  
SIGNS

PLATING  
STAMPING  
ENAMELWORK  
CIGAR CUTTERS  
PAPER WEIGHTS  
BELT BUCKLES  
LETTER CLIPS  
LETTER HOLDERS  
POCKET KNIVES  
WATCH CHARMS  
LAPEL BUTTONS  
VANITY BOXES

BRANCH OFFICES  
IN ALL  
PRINCIPAL CITIES

September 22, 1916.

Secretary of State of Minnesota.

#### PROPOSAL FOR AUTOMOBILE AND MOTORCYCLE LICENSE NUMBER PLATES.

We hereby propose to furnish to the state of Minnesota in accordance with the advertised specifications, automobile license number plates, FOB State Capitol Building, St. Paul, packed in envelopes, protected by folded cardboard, ready for mailing, envelopes to be printed and numbered, plates to be of open hearth, hot rolled, pickled, and re-rolled steel, coated with sandrite, rust preventive, and the plates covered with two coats of rubber elastic enamel for ground work and two coats of same enamel in different color for the face of the characters, said plates absolutely guaranteed for a period of 3½ years from date of delivery thereof, said delivery in accordance with the specifications and in accordance with the time limits set forth.

#### PRICES. Automobile License Plates.

#20 Standard Gauge,	5½x14,	.20	per pair,	5½x15,	.206	per pr.
#22	"	"	.184	"	"	.189
#24	"	"	.165	"	"	.172

#### PRICES. Motorcycle License Plates.

#20 Standard Gauge,	.074	each.
#22	.071	"
#24	.069	"

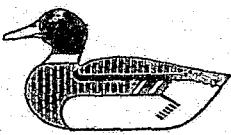
We also agree to furnish all duplicate plates or additional quantities that may be required during period set forth at the same price as specified herein, and also agree that any other plates other than the regular automobile plates if of the same size should be the same price. This also applies to dealers and manufacturers plates.

TELEPHONES SEELEY 2646

## THE GREENDUCK COMPANY

### MASTERCRAFTERS IN METAL

VAN BUREN AND HOYNE AVE. CHICAGO.

COINS RULES GAUGES MEDALS TROPHIES KEY TAGS KEY RINGS MATCH SAFES MATCH BOXES PAPER CUTTERS LETTER OPENERS AUTO LICENSE PLATES	WHITE METAL CASTING RADIATOR ORNAMENTS SOUVENIR SPOONS DESK CALENDARS BRASS ETCHING DESK CLOCKS EMBOSSING WATCH FODS CUFFLINKS SCARF PINS BOOKMARKS HAT PINS		WHISK BROOM HOLDERS TOOTHBRUSH HOLDERS ASH RECEIVERS MATCH STANDS NAME PLATES UTILITY TOOLS TIE CLASPS STAMP BOXES ASH TRAYS PEN TRAYS PIN TRAYS SIGNS	PLATING STAMPING ENAMELWORK CIGAR CUTTERS PAPERWEIGHTS BELT BUCKLES LETTER CLIPS LETTER HOLDERS POCKET KNIVES WATCH CHARMS LAPEL BUTTONS VANITY BOXES
---	---	--	---	--

BRANCH OFFICES  
IN ALL  
PRINCIPAL CITIES

Secretary of State of Minnesota, #2.

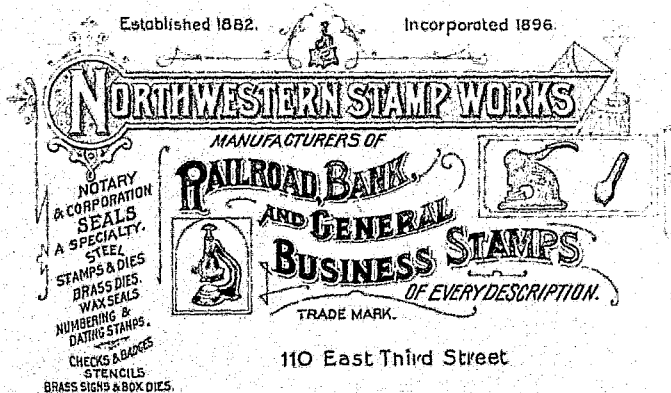
Certified check for \$2800 as a guarantee of performance  
of contract herewith enclosed.

Respectfully submitted.

THE GREENDUCK COMPANY.

BY

*L. S. Green*  
Pres.



ST. PAUL, MINN., SEP 8 1916

Box Printing Dies  
Brass Signs  
Brass Labels  
Badges

Brands  
Burning  
Flour  
Shingle  
Cancelling Machines

Checks  
Baggage  
Bread  
Hotel Key  
Jewelers'  
Key Ring  
Milk  
Pool  
Prescription  
Protectors  
Time  
Trade

Dies  
Brass  
Embossing  
Photo  
Door Numbers

Figures  
Brass and Nickel  
Rubber  
Steel  
Harness Letters  
Initial Wax Seals  
Inking Pads

Ink  
For Stamps  
For Stencils  
Indelible  
Num. Machines

Plates  
Carriage  
Door  
Dog Collar  
Machinery  
Office

Punches  
Bank  
Cancelling  
Ticket  
Racks for Stamps  
Sealing Wax

Seals  
Corporation  
Notary  
Society  
Every Kind

Stamps  
Bank  
Brass  
Dating  
Linen Marking  
Log  
Monogram  
Numbering  
Pocket  
Post-office  
Rubber, Hand  
Self-inking  
Shoe Manufacturers'  
Steel

Stencils  
Adjustable  
Adjustable Figures  
Alphabets, Adjust.  
Brushes  
Ink  
Name Plate

Type  
Metal Bodies  
Solid Rubber  
Wax Seals

Send for...

Catalogue

Mr. Julius A. Schmahl, Sec. of State,  
State Capitol,  
St. Paul, Minn.

Dear Sir:

We herewith submit our bid on 5000  
Chauffeur Badges for 1917 and 5000 Chauffeur Badges  
for 1918, which we hope will meet with your favorable  
consideration.

Badges to be of designs attached hereto,  
designs to be embossed, to be numbered 1 to 5000,  
numbers to be filled in with enamel. Badges to be  
dommed, heavily nickel plated and to have strong heavy  
badge pin on back.

Each badge to be inclosed in envelope,  
numbered to correspond with number on badge and to be  
packed 100 serial numbers in cardboard box.

Delivery to be made as directed, 1917  
Badges Dec. 1st, 1916 and 1918 Badges Dec. 1st, 1917.

Price per each badge  $14\frac{1}{2}$  Cents or  $\$725.00$   
for the 5000 for 1917 and  $14\frac{1}{2}$  Cents each or  $\$725.00$   
for the 5000 for 1918.

All of the above to be manufactured and  
finished in our factory at #110 E. Third Str., and we  
assure you careful attention to detail and highest  
class workmanship on all work awarded us.

Yours very truly,

NORTHWESTERN STAMP WORKS.

PER

*A. G. Faller*  
*Secy.*

AGF-CR.

Certified Check for  $\$725.00$  attached.


Pursuant to call, a meeting of the State Automobile Tag Commission was held in the office of the secretary of state, State Capitol building, at 12 o'clock M, Friday, September 22, 1916. There were present Secretary of State Julius A. Schmahl, State Auditor J.A.O. Preus and State Treasurer A.C. Gooding. On motion A.C. Gooding was appointed secretary.

Proposals to furnish chauffeurs' badges, motorcycle tags and automobile tags were presented by various concerns. No action was taken; meeting adjourned to Monday, September 25, 1916, to meet in the same place at 2 o'clock P.M.

Adjourned meeting of the State Automobile Tag Commission was held in the office of the secretary of state on Monday, September 25, 1916 at 2 o'clock P.M. There were present Secretary of State Julius A. Schmahl, State Auditor J.A.O. Preus and State Treasurer A.C. Gooding. On motion A.C. Gooding was appointed secretary.

On motion it was ordered that the contract for automobile tags be awarded to the Western Display Company of St Paul, at a price of 16, 7/10 cents per set of two; and the motorcycle tags to the Western Display Company of St Paul, at a price of 6 cents, Julius A. Schmahl and A.C. Gooding voting in favor thereof, J.A.O. Preus voting in the negative. It was further ordered that the contract for chauffeurs' badges be let to the Green Duck Company of Chicago, at a price of 5, 5/10 cents per badge.

On motion adjourned.



Secretary.

8965

7670

8965

STATE OF MINNESOTA  
DEPT OF STATE

Filed in the office of Secretary of State  
9/16  
Julius A. Schuyler  
Secretary of State