

An Equal Opportunity Employer



Phone: (612) 296-2428

STATE OF MINNESOTA
MUNICIPAL BOARD

165 Metro Square Building
121 East Seventh Place
St. Paul, Minnesota 55101-2142

June 4, 1990

Carole A. Grimm
Rochester City Clerk
Room 100, City Hall
224 - 1st Avenue, Southwest
Rochester, Minnesota 55902-3163

Docket Number: A-4696

Ordinance Number: 2687

City of Rochester

Dear Ms. Grimm:

The Minnesota Municipal Board has now processed and approved the above ordinance in accordance with Minnesota Statutes, Chapter 414, and the Rules of Procedure.

According to law, this annexation ordinance must be filed with the Township Clerk, County Auditor, Secretary of State, and the Municipal Board. (Since the ordinance has already been filed with the Municipal Board, no additional copies are required.) We recommend that you also file the ordinance with the County Recorder.

The annexation is final upon the date the ordinance is approved by the Board, which is the date of this letter.

Sincerely,

MUNICIPAL BOARD

A handwritten signature in cursive script, appearing to read "Pat Lundy".

Patricia D. Lundy
Assistant Director

PDL:sh

cc: Olmsted County Auditor
Cascade Township Clerk
Judy Kay Scherr, Deputy City Clerk
Denny Stotz, Director of Forestry
Stevan Kvenvold, City Administrator
Secretary of State

440361
STATE OF MINNESOTA
DEPARTMENT OF STATE
FILED

JUN - 8 1990

A handwritten signature in cursive script, appearing to read "Joan Anderson".
Secretary of State

STATE OF MINNESOTA)
)
COUNTY OF OLMSTED)

I, JUDY KAY SCHERR, DEPUTY CITY CLERK OF THE CITY OF ROCHESTER,
MINNESOTA, DO HEREBY CERTIFY THAT I HAVE COMPARED THE ATTACHED
COPY OF AN ORDINANCE WITH THE ORIGINAL ORDINANCE ON FILE IN MY
OFFICE AND THAT THE FOREGOING IS A TRUE AND CORRECT COPY OF THE
SAID ORDINANCE AND OF THE WHOLE THEREOF.

WITNESS MY HAND THIS 24th DAY OF MAY, 1990.

Judy Kay Scherr
Deputy City Clerk
City of Rochester, Minnesota

(Seal of the City of
Rochester, Minnesota)

ORDINANCE NO. 2687

AN ORDINANCE RELATING TO ANNEXATION; ANNEXING TO THE CITY OF ROCHESTER A PORTION OF THE SOUTHWEST QUARTER OF THE SOUTHWEST QUARTER OF SECTION 14, TOWNSHIP 107 NORTH, RANGE 14 WEST, OWNED BY THE CITY OF ROCHESTER.

THE COMMON COUNCIL OF THE CITY OF ROCHESTER DO ORDAIN:

Section 1. A request has been filed with the Common Council of the City of Rochester, to annex certain lands owned by the City which are hereinafter described. The land in question is located in Cascade Township, Olmsted County, Minnesota, and is described together with adjacent public right-of-way as follows:

That part of the Southwest Quarter of the Southwest Quarter of Section 14, Township 107 North, Range 14 West, Olmsted County, Minnesota, described as follows:

Commencing at the southwest corner of the Southwest Quarter of the Southwest Quarter of said Section 14; thence South 89 degrees 58 minutes 22 seconds East, assumed bearing, along the south line of said Section 14, a distance of 226.82 feet for the point of beginning; thence continue South 89 degrees 58 minutes 22 seconds East, along said south line, 1100.00 feet to the southeast corner of said Southwest Quarter of the Southwest Quarter; thence North 00 degrees 19 minutes 50 seconds West, along the east line of said Southwest Quarter of the Southwest Quarter, 1584.03 feet; thence North 89 degrees 58 minutes 22 seconds West, parallel with the south line of said Section 14, a distance of 1100.00 feet; thence South 00 degrees 19 minutes 50 seconds East, parallel with the east line of said Southwest Quarter of the Southwest Quarter, 1584.03 feet to the point of beginning. Being subject to all easements, restrictions, and covenants of record.

Containing 40.00 acres.

Section 2. The quantity of land included in said petition is approximately 40.00 acres in size.

Section 3. The Common Council of the City of Rochester does hereby determine that the land described in Section 1 is owned by the City of Rochester, is urban or suburban in character, or about to become so, and is so conditioned as to be properly subjected to municipal government, and the annexation of said land will be in the best interest of the City of Rochester and the land described.

Section 4. . Therefore, the land described in Section 1 above is hereby annexed, added to and made a part of the City of Rochester, Minnesota, as effectually as if it had originally been a part thereof.

Section 5. This ordinance shall take effect and be in force from and after its official publication and from and after the filing of a certified copy hereof with the Minnesota Municipal board, the Cascade Town Clerk, the County Auditor, and the Secretary of State.

PASSED AND ADOPTED BY THE COMMON COUNCIL OF THE CITY OF ROCHESTER, MINNESOTA, THIS 16 DAY OF April, 1990.

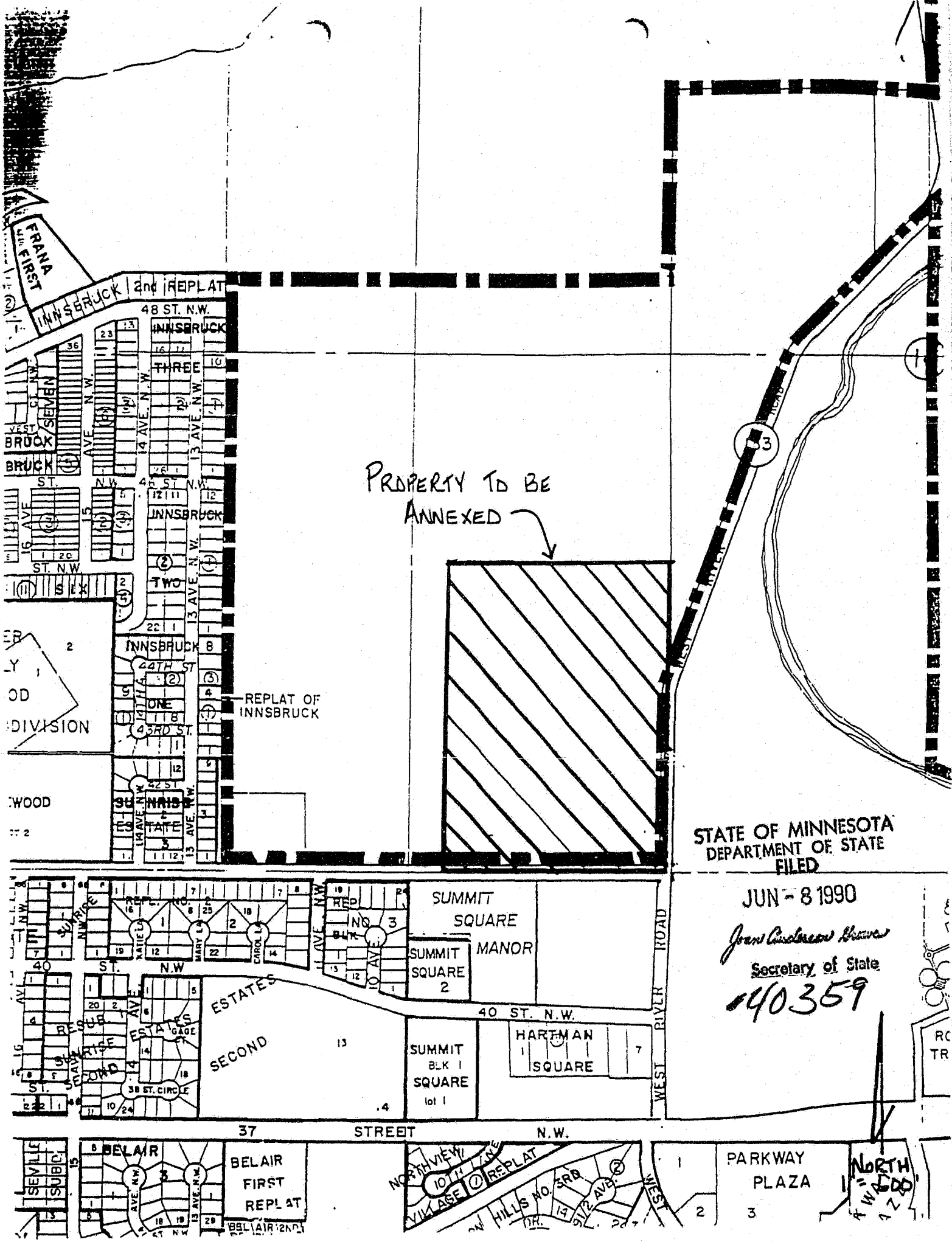
Deucey B. Selby
PRESIDENT OF SAID COMMON COUNCIL

ATTEST: Cassie J. Brown
CITY CLERK

APPROVED THIS 17 DAY OF April, 1990.

Charles T. Jensen
MAYOR OF SAID CITY

(Seal of the City of
Rochester, Minnesota)



PROPERTY TO BE ANNEXED

STATE OF MINNESOTA
DEPARTMENT OF STATE
FILED

JUN - 8 1990

Jean Anderson Brown
Secretary of State
40359

INNSBRUCK and REPLAT

48 ST. N.W.

INNSBRUCK

THREE

INNSBRUCK

TWO

INNSBRUCK

ONE

INNSBRUCK

REPLAT OF INNSBRUCK

INNSBRUCK

INNSBRUCK

INNSBRUCK

INNSBRUCK

INNSBRUCK

INNSBRUCK

INNSBRUCK

INNSBRUCK

INNSBRUCK

INNSBRUCK

INNSBRUCK

INNSBRUCK

INNSBRUCK

INNSBRUCK

INNSBRUCK

INNSBRUCK

INNSBRUCK

INNSBRUCK

INNSBRUCK

INNSBRUCK

INNSBRUCK

INNSBRUCK

INNSBRUCK

INNSBRUCK

INNSBRUCK

INNSBRUCK

INNSBRUCK

INNSBRUCK

INNSBRUCK

INNSBRUCK

INNSBRUCK

INNSBRUCK

INNSBRUCK

INNSBRUCK

INNSBRUCK

INNSBRUCK

INNSBRUCK

INNSBRUCK

INNSBRUCK

INNSBRUCK

INNSBRUCK

INNSBRUCK

INNSBRUCK

INNSBRUCK

INNSBRUCK

INNSBRUCK

INNSBRUCK

INNSBRUCK

INNSBRUCK

INNSBRUCK

INNSBRUCK

INNSBRUCK

INNSBRUCK

INNSBRUCK

INNSBRUCK

INNSBRUCK

INNSBRUCK

INNSBRUCK

INNSBRUCK

INNSBRUCK

INNSBRUCK

INNSBRUCK

INNSBRUCK

WOOD
DIVISION

WOOD
DIVISION

SUMMIT SQUARE

SUMMIT MANOR

SUMMIT SQUARE 2

SUMMIT BLK 1 SQUARE lot 1

HARTMAN SQUARE

ESTATES

SECOND

37 STREET N.W.

BELAIR

BELAIR FIRST REPLAT

NORTHVIEW VILLAGE REPLAT

PARKWAY PLAZA

NORTH WOOD