



STATE OF MINNESOTA  
MUNICIPAL BOARD

Suite 165 Metro Square  
7th & Robert Streets  
St. Paul, Minnesota 55101

January 3, 1990

Carole A. Grimm  
Rochester City Clerk  
224 - 1st Avenue, Southwest  
Rochester, Minnesota 55902-3163

Docket Number: A-4679

Ordinance Number: 2661

City of Rochester

Dear Ms. Grimm:

The Minnesota Municipal Board has now processed and approved the above ordinance in accordance with Minnesota Statutes, Chapter 414, and the Rules of Procedure.

According to law, this annexation ordinance must be filed with the Township Clerk, County Auditor, Secretary of State, and the Municipal Board. (Since the ordinance has already been filed with the Municipal Board, no additional copies are required.) We recommend that you also file the ordinance with the County Recorder.

The annexation is final upon the date the ordinance is approved by the Board, which is the date of this letter.

Sincerely,

MUNICIPAL BOARD

A handwritten signature in cursive script that reads "Pat Lundy".

Patricia D. Lundy  
Assistant Director

STATE OF MINNESOTA  
DEPARTMENT OF STATE  
FILED

JAN 10 1990

A handwritten signature in cursive script that reads "James Andrew Shaver".  
Secretary of State

PDL:sh

cc: Olmsted County Auditor  
Rochester Township Clerk  
Judy Kay Scherr, Deputy City Clerk  
Secretary of State

39937



STATE OF MINNESOTA  
MUNICIPAL BOARD

Suite 165 Metro Square  
7th & Robert Streets  
St. Paul, Minnesota 55101

January 3, 1990

Carole A. Grimm  
Rochester City Clerk  
224 - 1st Avenue, Southwest  
Rochester, Minnesota 55902-3163

Docket Number: A-4679

Ordinance Number: 2661

City of Rochester

Dear Ms. Grimm:

The Minnesota Municipal Board has now processed and approved the above ordinance in accordance with Minnesota Statutes, Chapter 414, and the Rules of Procedure.

According to law, this annexation ordinance must be filed with the Township Clerk, County Auditor, Secretary of State, and the Municipal Board. (Since the ordinance has already been filed with the Municipal Board, no additional copies are required.) We recommend that you also file the ordinance with the County Recorder.

The annexation is final upon the date the ordinance is approved by the Board, which is the date of this letter.

Sincerely,

MUNICIPAL BOARD

A handwritten signature in cursive script that reads "Pat Lundy".

Patricia D. Lundy  
Assistant Director

STATE OF MINNESOTA  
DEPARTMENT OF STATE  
FILED

JAN 10 1990

A handwritten signature in cursive script that reads "Joan Anderson Shew".  
Secretary of State

PDL:sh

cc: Olmsted County Auditor  
Rochester Township Clerk  
Judy Kay Scherr, Deputy City Clerk  
Secretary of State

# 39937

Rochester

STATE OF MINNESOTA )  
COUNTY OF OLMSTED )

I, JUDY KAY SCHERR, DEPUTY CITY CLERK OF THE CITY OF ROCHESTER,  
MINNESOTA, DO HEREBY CERTIFY THAT I HAVE COMPARED THE ATTACHED  
COPY OF AN ORDINANCE WITH THE ORIGINAL ORDINANCE ON FILE IN MY  
OFFICE AND THAT THE FOREGOING IS A TRUE AND CORRECT COPY OF THE  
SAID ORDINANCE AND OF THE WHOLE THEREOF.

WITNESS MY HAND THIS 10TH DAY OF DECEMBER, 1909.

Judy Kay Scherr  
Deputy City Clerk  
City of Rochester, Minnesota

(Seal of the City of  
Rochester, Minnesota)

ORDINANCE NO. 2661

AN ORDINANCE RELATING TO ANNEXATION; ANNEXING TO THE CITY OF ROCHESTER LOTS 1, 2, AND 3 AND A PORTION OF LOTS 4 AND 5, BLOCK 3 OF HIGHLAND ADDITION, TOGETHER WITH ADJACENT PUBLIC RIGHT OF WAY, IN THE TOWN OF ROCHESTER.

THE COMMON COUNCIL OF THE CITY OF ROCHESTER DO ORDAIN:

Section 1. A petition has been filed with the Common Council of the City of Rochester, signed by the owner of land described herein, requesting the Common Council to annex said land to the City of Rochester. The land described in said petition for annexation is located in Rochester Township, Olmsted County, Minnesota, and is described together with adjacent public right-of-way as follows:

Lots 1, 2 and 3; together with the North 47 feet of Lots 4 and 5, Highland Addition; together with the platted right-of-way for 2d Street Southwest and 21st Avenue Southwest lying adjacent thereto; according to the plat thereof on file and of record in the Office of the Olmsted County Recorder.

Section 2. The quantity of land included in said petition is approximately 1.04 acres in size.

Section 3. The Common Council of the City of Rochester does hereby determine that the land described in Section 1 is surrounded by the present territorial limits of the City of Rochester, is urban or suburban in character, and is so conditioned as to be properly subjected to municipal government, and the annexation of said land will be in the best interest of the City of Rochester and the land described.

Section 4. Therefore, the land described in Section 1 above is hereby annexed, added to and made a part of the City of Rochester, Minnesota, as effectually as if it had originally been a part thereof.

Section 5. Present and future owners of the lands annexed by this ordinance are hereby notified that in addition to the usual assessments, it is the intention of the Common Council to assess against benefited property all or a portion of the cost of any storm sewer, water tower, and trunk line sanitary sewer construction, heretofore or hereafter undertaken to serve the area annexed.

Section 6. This ordinance shall take effect and be in force from and after its official publication and from and after the filing of a certified copy hereof with the Minnesota Municipal board, the Rochester Town Clerk, the County Auditor, and the Secretary of State.

PASSED AND ADOPTED BY THE COMMON COUNCIL OF THE CITY OF  
ROCHESTER, MINNESOTA, THIS 20 DAY OF November, 1989.

Nancy B. Selby  
PRESIDENT OF SAID COMMON COUNCIL

ATTEST: Carroll A. Summ  
CITY CLERK

APPROVED THIS 21 DAY OF November, 1989.

Acting Nancy B. Selby  
MAYOR OF SAID CITY

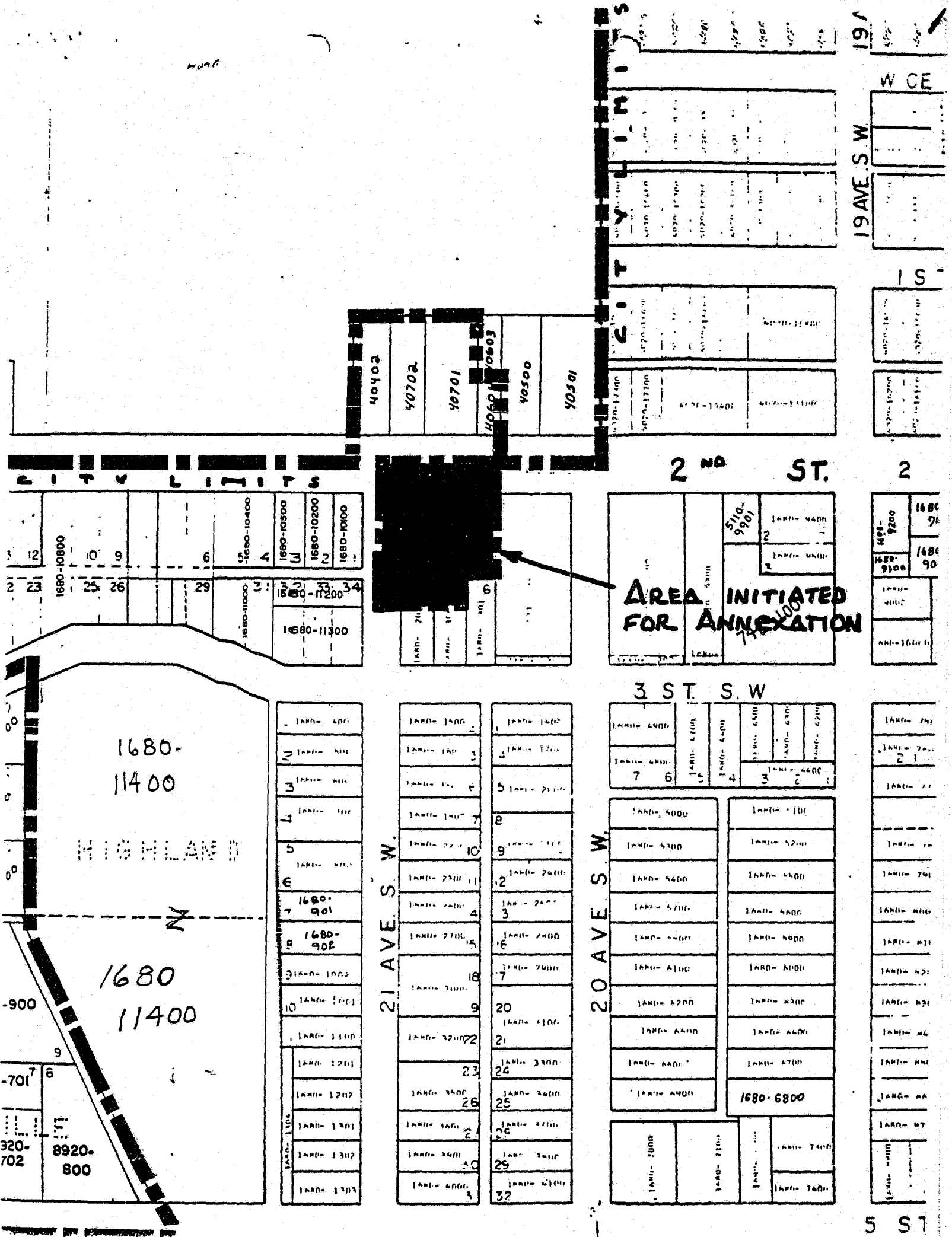
(Seal of the City of  
Rochester, Minnesota)

STATE OF MINNESOTA  
DEPARTMENT OF STATE  
FILED

JAN 10 1990

James Anderson Shaver  
Secretary of State

#39937



1680-11400

HIGHLAND

1680-11400

-900

-701

320-702

8920-800

- 1 LAND- 400
- 2 LAND- 400
- 3 LAND- 400
- 4 LAND- 400
- 5 LAND- 400
- 6 LAND- 400
- 7 1680-901
- 8 1680-902
- 9 LAND- 1000
- 10 LAND- 1100
- 11 LAND- 1201
- 12 LAND- 1202
- 13 LAND- 1301
- 14 LAND- 1302
- 15 LAND- 1303

21 AVE. S.W.

- 1 LAND- 1400
- 2 LAND- 1400
- 3 LAND- 1400
- 4 LAND- 1400
- 5 LAND- 1400
- 6 LAND- 1400
- 7 LAND- 1400
- 8 LAND- 1400
- 9 LAND- 1400
- 10 LAND- 1400
- 11 LAND- 1400
- 12 LAND- 1400
- 13 LAND- 1400
- 14 LAND- 1400
- 15 LAND- 1400
- 16 LAND- 1400
- 17 LAND- 1400
- 18 LAND- 1400
- 19 LAND- 1400
- 20 LAND- 1400
- 21 LAND- 1400
- 22 LAND- 1400
- 23 LAND- 1400
- 24 LAND- 1400
- 25 LAND- 1400
- 26 LAND- 1400
- 27 LAND- 1400
- 28 LAND- 1400
- 29 LAND- 1400
- 30 LAND- 1400
- 31 LAND- 1400
- 32 LAND- 1400

20 AVE. S.W.

- 1 LAND- 4000
- 2 LAND- 4000
- 3 LAND- 4000
- 4 LAND- 4000
- 5 LAND- 4000
- 6 LAND- 4000
- 7 LAND- 4000
- 8 LAND- 4000
- 9 LAND- 4000
- 10 LAND- 4000
- 11 LAND- 4000
- 12 LAND- 4000
- 13 LAND- 4000
- 14 LAND- 4000
- 15 LAND- 4000
- 16 LAND- 4000
- 17 LAND- 4000
- 18 LAND- 4000
- 19 LAND- 4000
- 20 LAND- 4000
- 21 LAND- 4000
- 22 LAND- 4000
- 23 LAND- 4000
- 24 LAND- 4000
- 25 LAND- 4000
- 26 LAND- 4000
- 27 LAND- 4000
- 28 LAND- 4000
- 29 LAND- 4000
- 30 LAND- 4000
- 31 LAND- 4000
- 32 LAND- 4000

3 ST. S.W.

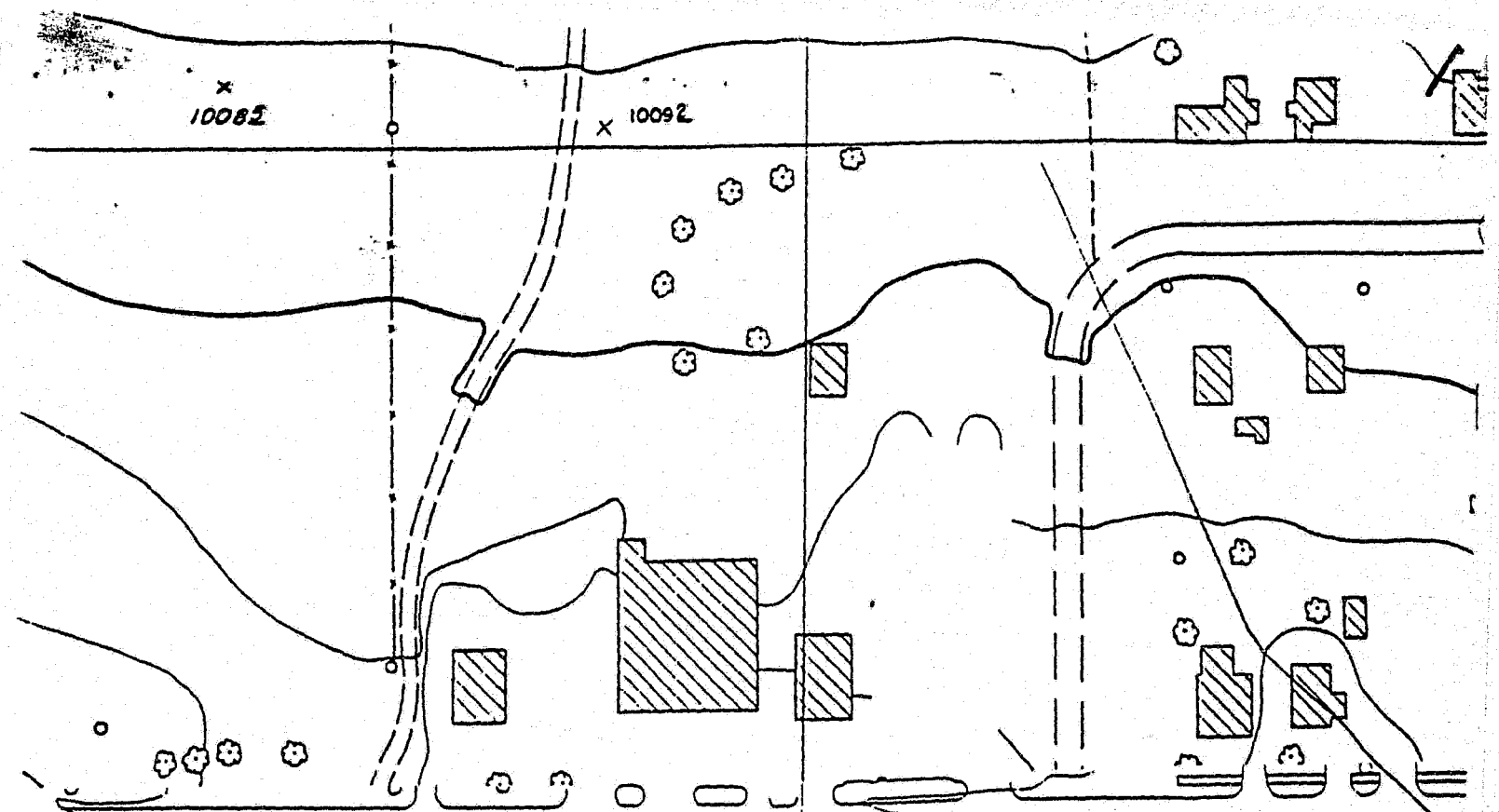
- 1 LAND- 4000
- 2 LAND- 4000
- 3 LAND- 4000
- 4 LAND- 4000
- 5 LAND- 4000
- 6 LAND- 4000
- 7 LAND- 4000

- 1 LAND- 5000
- 2 LAND- 5000
- 3 LAND- 5000
- 4 LAND- 5000
- 5 LAND- 5000
- 6 LAND- 5000
- 7 LAND- 5000
- 8 LAND- 5000
- 9 LAND- 5000
- 10 LAND- 5000
- 11 LAND- 5000
- 12 LAND- 5000
- 13 LAND- 5000
- 14 LAND- 5000
- 15 LAND- 5000
- 16 LAND- 5000
- 17 LAND- 5000
- 18 LAND- 5000
- 19 LAND- 5000
- 20 LAND- 5000
- 21 LAND- 5000
- 22 LAND- 5000
- 23 LAND- 5000
- 24 LAND- 5000
- 25 LAND- 5000
- 26 LAND- 5000
- 27 LAND- 5000
- 28 LAND- 5000
- 29 LAND- 5000
- 30 LAND- 5000
- 31 LAND- 5000
- 32 LAND- 5000

1680-6800

- 1 LAND- 7000
- 2 LAND- 7000
- 3 LAND- 7000
- 4 LAND- 7000
- 5 LAND- 7000
- 6 LAND- 7000
- 7 LAND- 7000
- 8 LAND- 7000
- 9 LAND- 7000
- 10 LAND- 7000
- 11 LAND- 7000
- 12 LAND- 7000
- 13 LAND- 7000
- 14 LAND- 7000
- 15 LAND- 7000
- 16 LAND- 7000
- 17 LAND- 7000
- 18 LAND- 7000
- 19 LAND- 7000
- 20 LAND- 7000
- 21 LAND- 7000
- 22 LAND- 7000
- 23 LAND- 7000
- 24 LAND- 7000
- 25 LAND- 7000
- 26 LAND- 7000
- 27 LAND- 7000
- 28 LAND- 7000
- 29 LAND- 7000
- 30 LAND- 7000
- 31 LAND- 7000
- 32 LAND- 7000

5 ST



2022 2ND ST  
 1017.8 VONCH CONCRETE 1017.0 2004 2ND ST. 1015.3

195' WIDE  
 FLATTED AILEY

