



STATE OF MINNESOTA
MUNICIPAL BOARD

Suite 165 Metro Square
7th & Robert Streets
St. Paul, Minnesota 55101

December 11, 1989

Marilyn Swanson
Administrative Secretary
37 Washington Avenue, West
Hutchinson, Minnesota 55350

Docket Number: A-4609
A-4678

Ordinance Number: 89-11
Ordinance Number: 89-12

City of Hutchinson

Dear Ms. Swanson:

The Minnesota Municipal Board has now processed and approved the above ordinances in accordance with Minnesota Statutes, Chapter 414, and the Rules of Procedure.

According to law, this annexation ordinance must be filed with the Township Clerk, County Auditor, Secretary of State, and the Municipal Board. (Since the ordinance has already been filed with the Municipal Board, no additional copies are required.) We recommend that you also file the ordinance with the County Record.

The annexation is final upon the date the ordinance is approved by the Board, which is the date of this letter.

Happy Holidays!

Sincerely,

MUNICIPAL BOARD

Handwritten signature of Patricia D. Lundy in cursive.

Patricia D. Lundy
Assistant Director

PDL:ry

cc: McLeod County Auditor
Lynn Township Clerk
(Secretary of State)

39843
STATE OF MINNESOTA
DEPARTMENT OF STATE
FILED

DEC 20 1989

O.D.

Handwritten signature of Joan Anderson Stone in cursive.

Secretary of State



Rulekensis

December 4, 1989

Ms. Patricia D. Lundy, Asst. Dir.
MN Municipal Board
Suite 165 Metro Square
7th and Robert Streets
St. Paul, MN 55101

SUBJECT: Annexation of Hansen Property
And Surrounding Area (6.6 Acres)

Dear Ms. Lundy:

On November 28, 1989, the City Council adopted Ordinance No. 89-12 to annex into the City 6.6 acres of the Ronald Hansen property and surrounding area. This land was completely surrounded by land within the municipal limits; therefore, no 90-day waiting period was required.

Enclosed are the following:

- Certified copy of Ordinance No. 89-12
- Filing Fee of \$100
- Map of Area Annexed

We shall look forward to receiving a letter of approval from the Municipal Board.

Sincerely,

CITY OF HUTCHINSON

Marilyn Swanson

Marilyn Swanson
Administrative Secretary

cc: County Commissioner Chm.
Edwin Homan Jr., Zng. Admin.
Secretary of State
McLeod County Auditor
McLeod County Recorder
Lynn Township Clerk/Chm.

Encls.

December 4, 1989

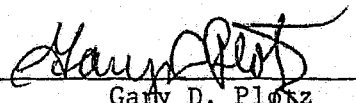
State of Minnesota)
County of McLeod)
City of Hutchinson)

I, the undersigned, being the duly qualified and acting City Administrator of the City of Hutchinson, Minnesota, do hereby certify that I have carefully compared the attached copy of:

ORDINANCE NO. 89-12

with the original on file in the Office of the City Administrator, and the same is a full true and complete copy thereof.

WITNESS my hand officially as such City Administrator and the Corporate Seal of the City this 4th day of December, 1989.



Gary D. Plotz
City Administrator

S E A L

ORDINANCE NO. 89-12
PUBLICATION NO. 4071

AN ORDINANCE IN THE CITY OF HUTCHINSON, COUNTY OF McLEOD, STATE OF MINNESOTA, INCORPORATING AND ANNEXING CERTAIN TRACTS AND PARCELS OF LAND INTO THE CITY OF HUTCHINSON AS MORE PARTICULARLY SET OUT IN SAID ORDINANCE.

WHEREAS, certain parcels of land abutting upon the City of Hutchinson are entirely surrounded by the City of Hutchinson; and

WHEREAS, the Minnesota Municipal Board pursuant to Minnesota Statutes Chapter 414 has approved the following annexation or no approval is required;

NOW, THEREFORE, the City of Hutchinson does ordain:

SEC. 1. That the lands hereafter described shall be and the same hereby are, annexed, to the City of Hutchinson, a Municipal corporation, located in the County of McLeod and State of Minnesota and from and after passage and publication of this Ordinance, said lands shall be annexed to and become a part of and included in the corporate limits of the City of Hutchinson:

All that part of the Southeast Quarter of the Southwest Quarter of Section One (1), Township One Hundred Sixteen (116) North, Range Thirty (30) West, not presently in the City of Hutchinson, but surrounded by the City. Containing 6.6 acres more or less.

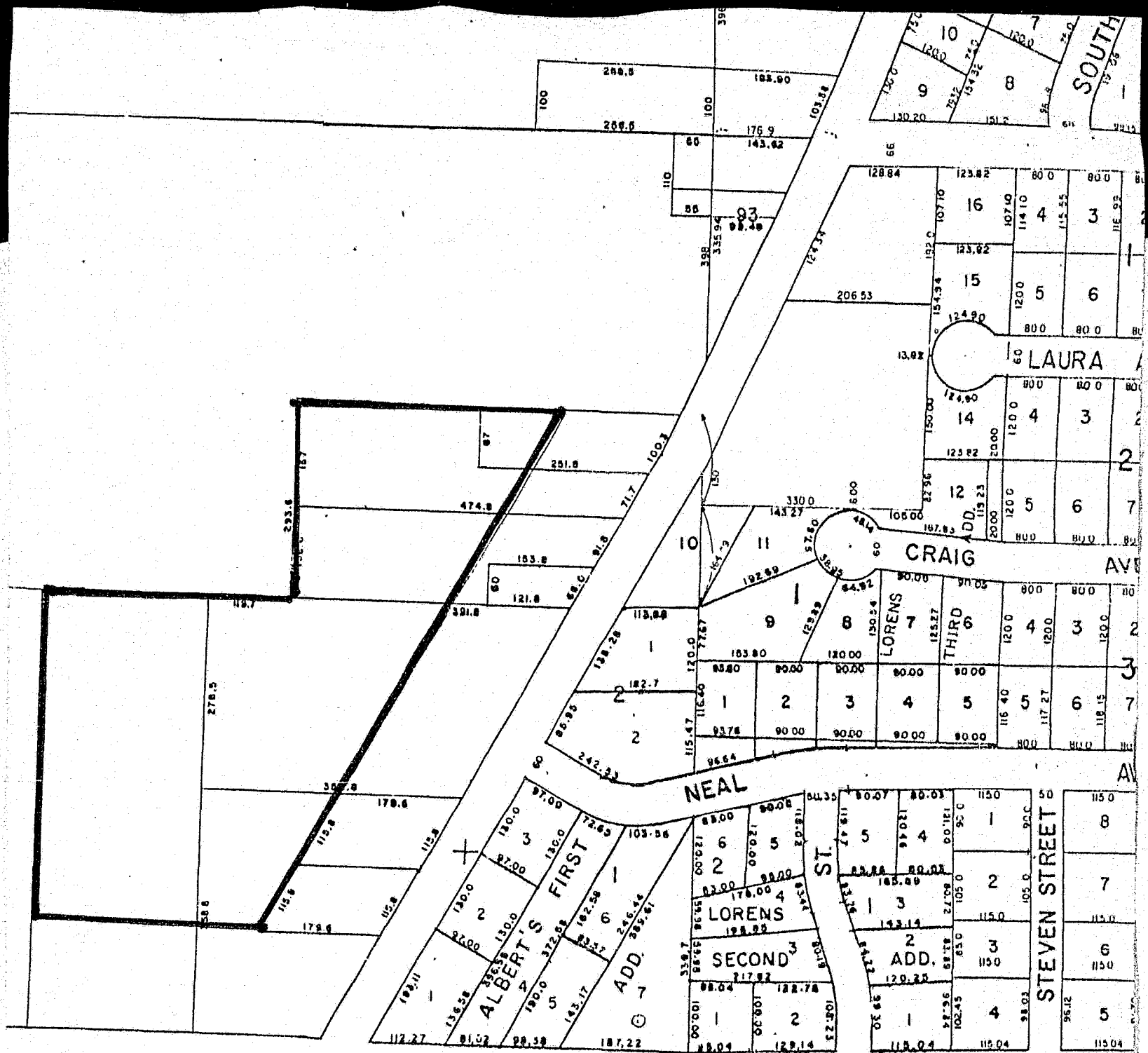
SEC. 2. This Ordinance shall become effective from and after publication.

Paul L. Adelman
Mayor

Attest:

Arthur R. [Signature]
City Administrator

First Reading: November 14, 1989
Second Reading: November 28, 1989
Publication Date: December 5, 1989



South Grade Road

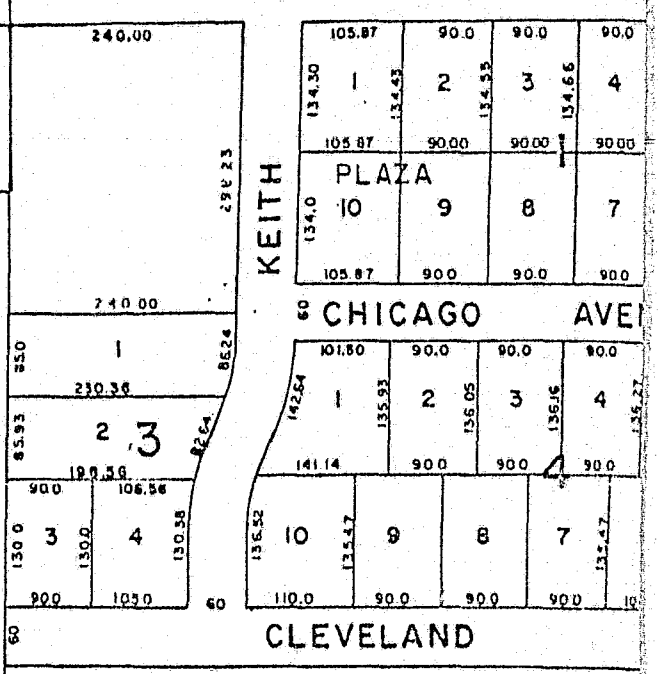
CHRIST THE KING
LUTHERAN CHURCH

Dale Street

STATE OF MINNESOTA
DEPARTMENT OF STATE
FILED
DEC 20 1989

James Andrew Hoover
Secretary of State

39843
O.D.



CLEVELAND