



STATE OF MINNESOTA
MUNICIPAL BOARD

Suite 165 Metro Square
7th & Robert Streets
St. Paul, Minnesota 55101

September 5, 1989

Sandra H. Paulson
Mankato City Clerk
Mankato City Hall
202 E. Jackson, Box 3368
Mankato, MN 56001

Docket Number: A-4593

Ordinance Dated August 14, 1989

City of Mankato

Dear Ms. Paulson:

The Minnesota Municipal Board has now processed and approved the above ordinance in accordance with Minnesota Statutes, Chapter 414, and the Rules of Procedure.

According to law, this annexation ordinance must be filed with the Township Clerk, County Auditor, Secretary of State, and the Municipal Board. (Since the ordinance has already been filed with the Municipal Board, no additional copies are required.) We recommend that you also file the ordinance with the County Recorder.

The annexation is final upon the date the ordinance is approved by the Board, which is the date of this letter.

Sincerely,

MUNICIPAL BOARD

A handwritten signature in cursive script that reads "Patricia D. Lundy".

Patricia D. Lundy
Assistant Director

PDL:sw

cc: Blue Earth County Auditor
Mankato Township Clerk
Jim Harberts, Planning Director
Secretary of State

39468
STATE OF MINNESOTA
DEPARTMENT OF STATE
FILED

OCT 6 1989

A handwritten signature in cursive script that reads "Jim Harberts".
Secretary of State



Mankato

CITY OF MANKATO, MINNESOTA

202 East Jackson Street
Box 3368, Mankato, MN 56001
Telephone: 507-625-3161
FAX 507-388-7530

September 12, 1989

Secretary of State
180 State Office Building
St. Paul, MN 55155

Dear Secretary Grove:

As per state law, I am enclosing two annexation ordinances adopted by the City of Mankato and approved by the Minnesota Board on September 5, 1989.

Please contact me if there are any questions.

Sincerely,

James Harberts
Planning Director

JH/jaj

Enclosures

AN ORDINANCE ANNEXING PROPERTY
TO THE CORPORATE LIMITS OF
THE CITY OF MANKATO

WHEREAS, certain property described below is not presently included in the corporate limits of any incorporated city, village, or borough; and

WHEREAS, pursuant to Minnesota Statutes 414.003, Subdivision 5, the owners of such property described below have petitioned the City of Mankato for annexation of such property; and

WHEREAS, no objection has been filed pertaining to such petition; and

WHEREAS, the property is about to become urban in character; and

WHEREAS, there is no population on the property.

NOW, THEREFORE, the Council of the City of Mankato hereby ordains the corporate limits of the City of Mankato are hereby extended to and include the land described as follows and the same is hereby annexed to and included within the City of Mankato as effectively as if it had originally been a part thereof:

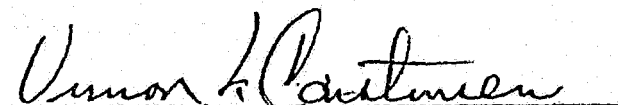
That part of the the North 620 feet of the Southeast Quarter (SE 1/4) of the Northeast Quarter (NE 1/4) of Section 16, Township 108 North, Range 26 West, Blue Earth County, Minnesota, lying westerly of Highway 22 Subdivision according to the plat thereof recorded in F of plats 62 in the County Recorder's office, and excepting therefrom that part of Hosanna's addition lying and being within said North 620 feet.


Said tract contains 13.93 acres.

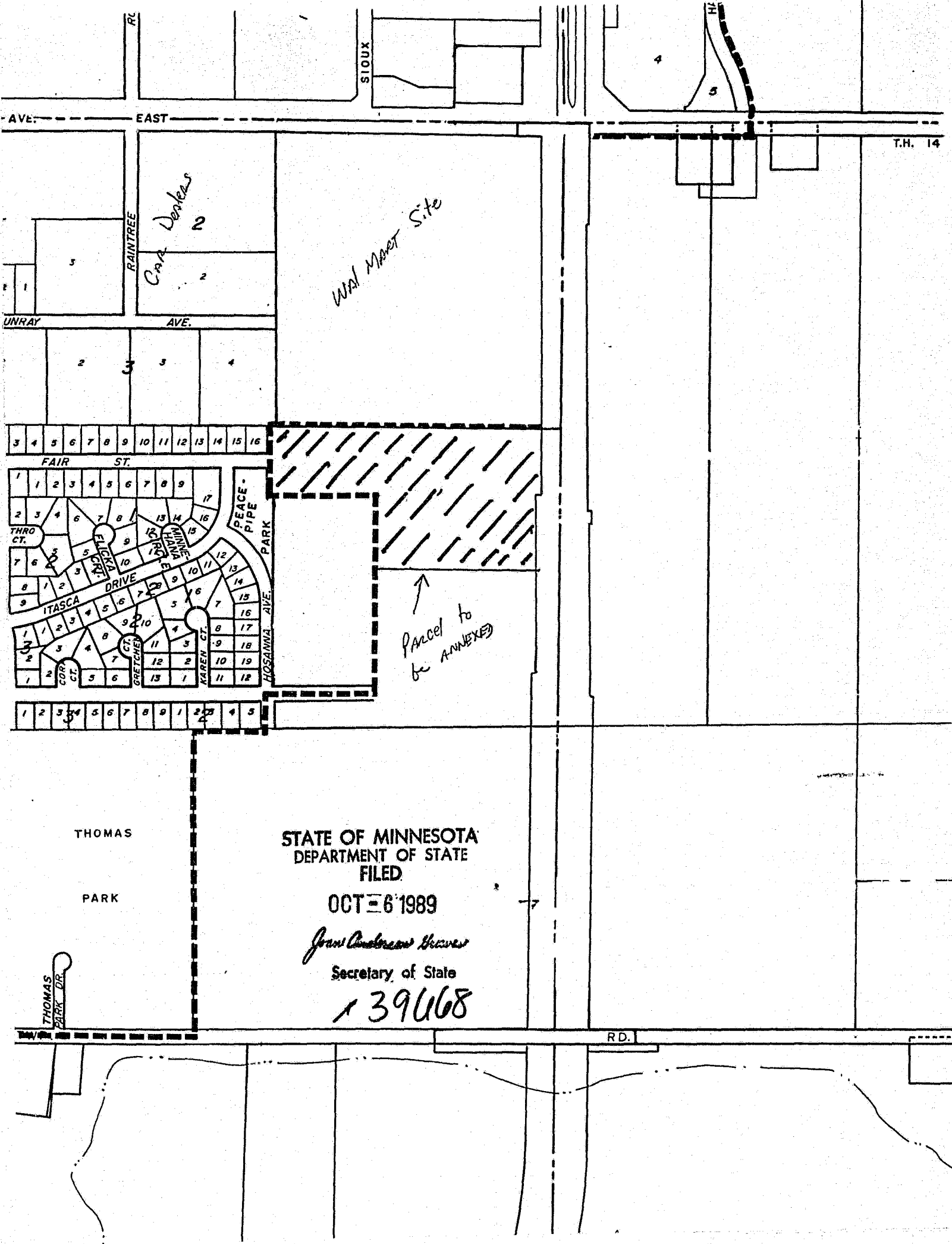
The City Clerk is hereby directed to file copies of this ordinance with the Minnesota Municipal Board, the Secretary of State, the Blue Earth County Auditor, and the Mankato Township Board.

This ordinance shall be effective 30 days after its passage, due publication thereof, and approval by the Minnesota Municipal Board.

Adopted this 14th day of August, 1989.


Vernon K. Carstensen
Mayor

ATTEST: 
Sandra R. Paulson
City Clerk



T.H. 14

Wal Mart Site

CAR Dealers

Parcel to be ANNEXED

THOMAS
PARK

STATE OF MINNESOTA
DEPARTMENT OF STATE
FILED

OCT 6 1989

Joan Anderson Hovew
Secretary of State

139668

THOMAS
PARK DR

R.D.