



STATE OF MINNESOTA
MUNICIPAL BOARD

Sulte 165 Metro Square
7th & Robert Streets
St. Paul, Minnesota 55101

July 11, 1989

Richard Zimmer
Foley City Clerk
Foley City Hall
251 - 4th Ave
Foley, MN 56329

Docket Number A-4616

Ordinance Number 221

City of Foley

Dear Mr. Zimmer:

The Minnesota Municipal Board has now processed and approved the above ordinance in accordance with Minnesota Statutes, Chapter 414, and the Rules of Procedure.

According to law, this annexation ordinance must be filed with the Township Clerk, County Auditor, Secretary of State, and the Municipal Board. (Since the ordinance has already been filed with the Municipal Board, no additional copies are required.) We also recommend that you file the ordinance with the County Recorder.

The annexation is final upon the date the ordinance is approved by the Board, which is the date of this letter.

Sincerely,

MUNICIPAL BOARD

Pat Lundy
Patricia D. Lundy
Assistant Director

PDL:sw

cc: Benton County Auditor
Gilmanton Township Clerk
Secretary of State

39327
STATE OF MINNESOTA
DEPARTMENT OF STATE
FILED

JUL 17 1989

John Anderson
Secretary of State

CITY OF FOLEY
COUNTY OF BENTON
STATE OF MINNESOTA
ORDINANCE NUMBER 221

AN ORDINANCE EXTENDING THE CORPORATE LIMITS OF THE CITY OF FOLEY TO INCLUDE CERTAIN UNINCORPORATED LAND OWNED BY THE CITY AND ABUTTING UPON THE CURRENT CITY LIMITS.

WHEREAS, the City owns approximately 157.78 acres of land abutting the current Foley City Limits on the south side; and

WHEREAS, the City Council has determined that it is in the best interests of the City for the land to be annexed into the corporate limits of the City and;

WHEREAS, the City Council may pursuant to Minnesota Statute Section 414.033, Subd. 2, by ordinance, declare the land annexed into the City;

THEREFORE, the City Council of the City of Foley, Minnesota, ordains:

SECTION ONE

That the City Council hereby determines that annexation of the land will be in the best interests of the City and the territory affected; that the land abuts upon the current city limits and is substantially urban in character; and that none of the land is now included within the limits of any other city; and, that the land is now owned in fee simple by the City of Foley.

SECTION TWO

Territory Annexed. The corporate city limits of the City of Foley are hereby extended to include the following described land and the land is hereby annexed into and included within the City of Foley as effectually as if it had originally been a part hereof:

All of the Southwest Quarter (SW $\frac{1}{4}$) of Section Thirty-six (36), Township thirty-seven (37), Range Twenty-nine (29), Benton County, Minnesota, less the East 339.11 feet of the South 261 feet of the Southwest Quarter of the Southwest Quarter (SW $\frac{1}{4}$ SW $\frac{1}{4}$), and also less the West 32.89 feet of the South 261 feet of the Southeast Quarter of the Southwest Quarter (SE $\frac{1}{4}$ SW $\frac{1}{4}$), which exception contains 2.22 acres, more or less, and thus including 157.78 acres more or less.

The land described is subject to existing easements of record.

SECTION THREE

Zoning. The annexed land will be zoned "A-1" agricultural district, according to Ordinance No. 167, Section 7, Subdivision 2, which provides that all land which may hereafter become a part of the City of Foley through annexation shall automatically be classified in the "A-1" agricultural district until otherwise changed by an amendment procedure.

SECTION FOUR

FILING. The City Clerk is hereby directed to file a certified copy of this ordinance with the Minnesota Municipal Board, the Minnesota Secretary of State, the Benton County Auditor, and the Gilmanton Township Clerk.

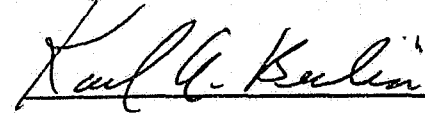
SECTION FIVE

Population. The land to be annexed is vacant and unoccupied, and the annexation of the land will neither increase nor decrease the population of the City of Foley.

SECTION SIX

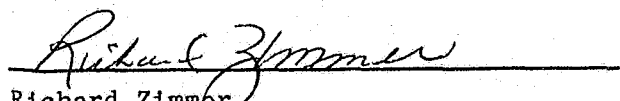
Effective Date. This Ordinance shall be effective and final on such date as the Ordinance is approved by the Minnesota Municipal Board.

Adopted by the City of Foley on this 6th day of June, 1989.

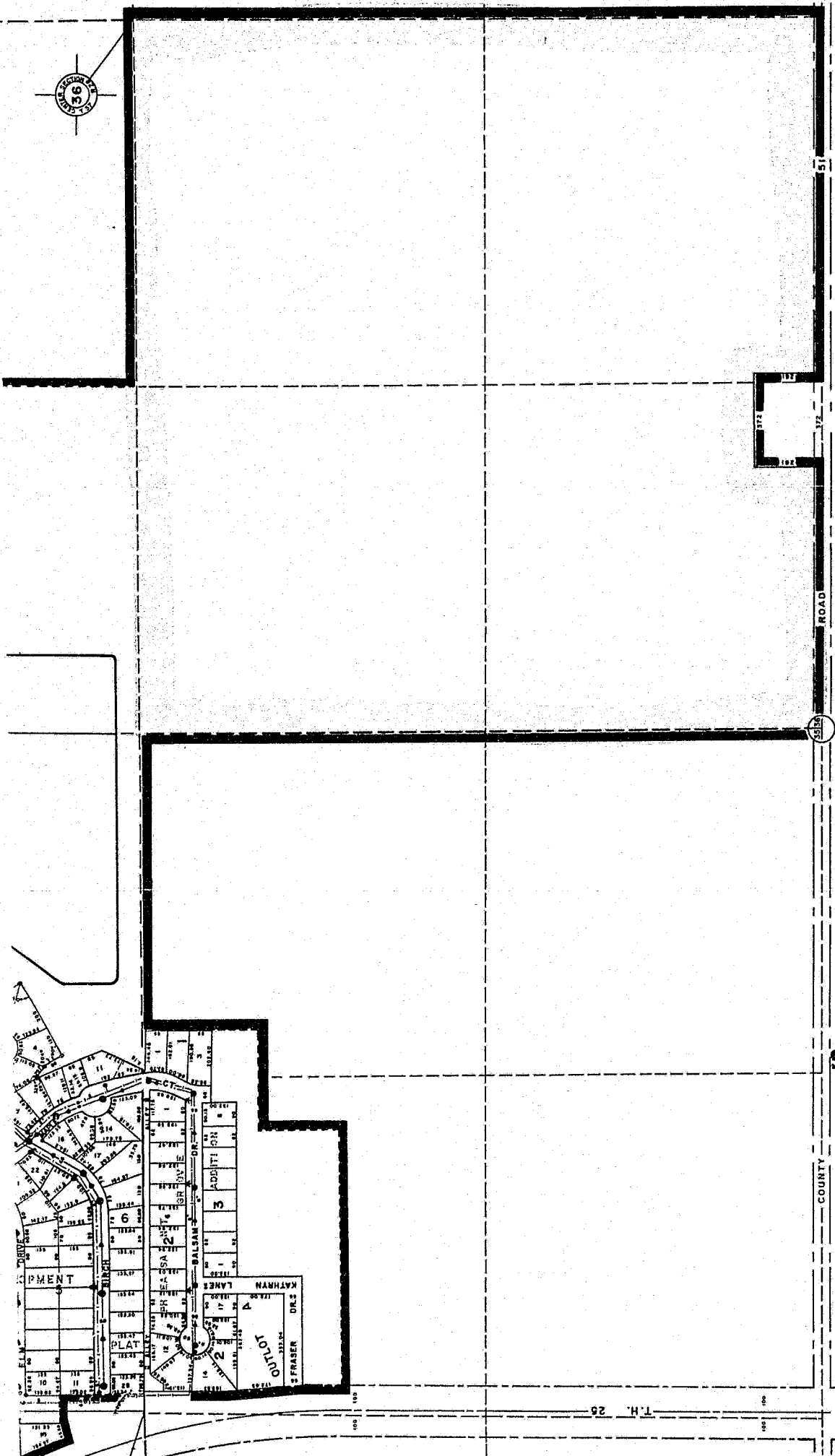


Karl A. Berlin, Mayor

ATTEST:



Richard Zimmer
City Clerk



STATE OF MINNESOTA
DEPARTMENT OF STATE
FILED

JUL 17 1989

John Andrew Hoover
Secretary of State

Foley

City of Foley

BENTON COUNTY
Foley, Minnesota
56329

June 19, 1989

Office of the Secretary of State
Room 180 State Office Building
St. Paul, MN 55155

Dear Secretary of State,

Please find enclosed a copy of Ordinance Number 221, annexing land into the City of Foley. The land was owned by the City of Foley; therefore they have annexed it by ordinance. A copy of the ordinance has been filed with the Minnesota Municipal Board, the County Auditor and the Gilmanton Township Clerk. If you have any questions concerning this matter, please give me a call at the Foley City Hall (612-968-7260). Thank you for your time.

Sincerely,

Richard Zimmer

Richard Zimmer
City Clerk

STATE OF MINNESOTA
DEPARTMENT OF STATE
FILED

JUL 17 1989

James Anderson
Secretary of State

239327

O.P.