

An Equal Opportunity Employer

Phone: (612) 296-2428



STATE OF MINNESOTA
MUNICIPAL BOARD

Suite 165 Metro Square
7th & Robert Streets
St. Paul, Minnesota 55101

May 16, 1989

Carole A. Grimm
City Clerk
Room 100, City Hall
Rochester, MN 55902

Docket Number A-4555

Ordinance Number 2630

City of Rochester

Dear Ms. Grimm:

The Minnesota Municipal Board has now processed and approved the above ordinance in accordance with Minnesota Statutes, Chapter 414, and the Rules of Procedure.

According to law, this annexation ordinance must be filed with the Township Clerk, County Auditor, Secretary of State, and the Municipal Board. (Since the ordinance has already been filed with the Municipal Board, no additional copies are required.) We also recommend that you file the ordinance with the County Recorder.

The annexation is final upon the date the ordinance is approved by the Board, which is the date of this letter.

Sincerely,

MUNICIPAL BOARD

Handwritten signature of Patricia D. Lund in cursive.

Patricia D. Lund
Assistant Director

PDL:ry

cc: Olmsted County Auditor
Cascade Township Clerk
Judy Kay Scherr, Clerk
Secretary of State ✓
Leslie A. Bluske, Petitioner
Sandra Nelson, Planner

139115
STATE OF MINNESOTA
DEPARTMENT OF STATE
FILED

MAY 23 1989

Handwritten signature of Joan Anderson Hervey in cursive.
Secretary of State

Rochester

ORDINANCE NO. 21630

AN ORDINANCE ANNEXING TO THE CITY OF ROCHESTER, MINNESOTA, APPROXIMATELY 3.32 ACRES OF LAND IN THE SOUTH HALF OF THE NORTHEAST QUARTER OF CASCADE TOWNSHIP, OLNSTED COUNTY, MINNESOTA, AND ESTABLISHING THE ZONING THEREON; AMENDING ORDINANCE NO. 1659.

THE COMMON COUNCIL OF THE CITY OF ROCHESTER DO ORDAIN:

Section 1. A petition has been filed with the Common Council of the City of Rochester, signed by the owner of land described herein, requesting the Common Council to annex said land to the City of Rochester. The land described in said petition for annexation is located in Cascade Township, Olmsted County, Minnesota, and is described as follows:

TRACT A

All that part of the South One-Half (S 1/2) of the Northeast Quarter (NE 1/4) of Section 23, Township 107 North, Range 14 West, lying northerly of the centerline of 37th Street Northwest, Olmsted County, Minnesota.

Containing 3.32 acres.

Said petition has also been filed with the Town Board of Cascade Township, with the County Board of the County of Olmsted, and with the Minnesota Municipal Board, and the Town Board of Cascade Township has notified the City that it has no objections to the annexation of the above-described land.

Section 2. The quantity of land included in said petition is approximately 3.32 acres in size.

Section 3. The Common Council of the City of Rochester does hereby determine that the land described in Section 1 abuts upon the present territorial limits of the City of Rochester, is so conditioned as to be properly subjected to municipal government, and the annexation of said land will be in the best interest of the City of Rochester and the land described.

Section 4. Therefore, the land described in Section 1 above is hereby annexed, added to and made a part of the City of Rochester, Minnesota, as effectually as if it had originally been a part thereof.

Section 5. Present and future owners of the lands annexed by this ordinance are hereby notified that in addition to the usual assessments, it is the intention of the Common Council to assess against benefited property all or a portion of the cost of any storm sewer, water tower, and trunk line sanitary sewer construction, heretofore or hereafter undertaken to serve the area annexed.

Section 6. Upon the petition of the owner and recommendation of the Planning and Zoning Commission following a public hearing duly noticed and held, Ordinance No. 1659 as amended, known as the Zoning Ordinance of the City of Rochester, Minnesota, is hereby further amended as follows:

The Zoning Map of the City of Rochester as adopted by said Ordinance No. 1659 establishing the various zoning districts and boundaries thereof, is amended by rezoning the lands described in as: B-4 GENERAL BUSINESS.

Section 7. This ordinance shall take effect and be in force from and after its official publication and from and after the filing of a certified copy hereof with the Minnesota Municipal board, the Cascade Town Clerk, the County Auditor, and the Secretary of State.

PASSED AND ADOPTED BY THE COMMON COUNCIL OF THE CITY OF ROCHESTER, MINNESOTA, THIS 17 DAY OF APRIL, 1989.

James B. Selby
PRESIDENT OF SAID COMMON COUNCIL

ATTEST: Orville G. Johnson
CITY CLERK

APPROVED THIS 17 DAY OF APRIL, 1989.

Charles T. Jensen
MAYOR OF SAID CITY

(Seal of the City of Rochester, Minnesota)

582285

1000
ABSTRACT GRANTOR GRANTEE TRACKED PAID
CITY Planning

FILED IN RECORDS OFFICE
Hennepin County, Minn
I hereby certify that the within instrument
is filed in this office for record on

MAY 4 - 1989

at 4:00 P.M.
clock
of May on page 620
LOIS FINSTUEN
County Recorder
Susan Murray

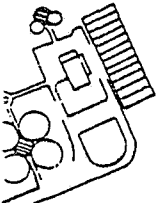
city clerk

139115

STATE OF MINNESOTA
DEPARTMENT OF STATE
FILED

MAY 23 1989

John Anderson Sherer



ROCHESTER SEWAGE
TREATMENT PLANT

NORTH
1" = 600'

LOCATION OF PROPERTY PROPOSED
FOR ANNEXATION AND REZONING

DOMA LE-
POTIER
SUBD.

37TH
STREET

SERVICE
BUSINESS
PARK

MORRIS'S MORRIS'S

32 ST NE

2ND THIRD

MORRIS'S
11ST

RINDER
RIVER CT NE

CHEVAL ANE

NORTH
STAR
SECOND

ST NE

1 2 3 4 5 6 7 8 9 10 11 12 13

1 2 3 4 5 6 7 8 9 10 11 12 13

1 2 3 4 5 6 7 8 9 10 11 12 13

1 2 3 4 5 6 7 8 9 10 11 12 13

1 2 3 4 5 6 7 8 9 10 11 12 13

1 2 3 4 5 6 7 8 9 10 11 12 13

1 2 3 4 5 6 7 8 9 10 11 12 13

23

RIVER

ZUMBRO

RIVERVIEW
WEST

RIVERVIEW
RIVERSIDE L.A.

FARM L.A.

SEALS
PLACE NE

SEALS
PLACE NE

SEALS
PLACE NE

SEALS
PLACE NE

SEALS
PLACE NE

SEALS
PLACE NE

SEALS
PLACE NE

SEALS
PLACE NE

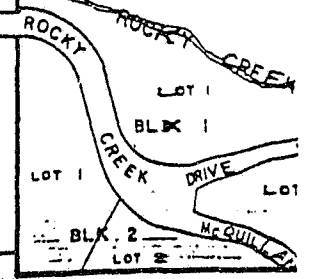
SEALS
PLACE NE

SEALS
PLACE NE

SEALS
PLACE NE



WOOD
LANE N.W.



LOT 1

BLK 1

LOT 1

LOT 2

BLK 2

LOT 2

ORDINANCE NO 1510