



STATE OF MINNESOTA  
MUNICIPAL BOARD

Suite 165 Metro Square  
7th & Robert Streets  
St. Paul, Minnesota 55101

December 13, 1988

Susan J. Mueller, CMC  
Sartell City Clerk-Treasurer  
310 Second Street, South  
P.O. Box 140  
Sartell, Minnesota 56377

Docket Number A-4529

Ordinance Number 88-5

City of Sartell

Dear Ms. Mueller:

The Minnesota Municipal Board has now processed and approved the above ordinance in accordance with Minnesota Statutes, Chapter 414, and the Rules of Procedure.

According to law, this annexation ordinance must be filed with the Township Clerk, County Auditor, Secretary of State, and the Municipal Board. (Since the ordinance has already been filed with the Municipal Board, no additional copies are required.) We also recommend that you file the ordinance with the County Recorder.

The annexation is final upon the date the ordinance is approved by the Board, which is the date of this letter.

Sincerely,

MUNICIPAL BOARD

*Patricia D. Lundy*  
Patricia D. Lundy  
Assistant Director

PDL:sg

cc: Stearns County Auditor  
Le Sauk Township Clerk  
Secretary of State

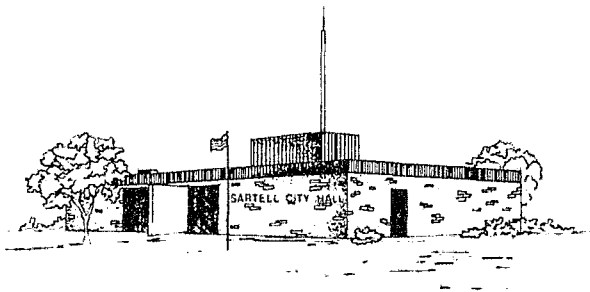
STATE OF MINNESOTA  
DEPARTMENT OF STATE  
FILED

DEC 15 1988

*Joan Anderson Howe*  
Secretary of State

438605

# CITY OF SARTELL



310 Second Street South • P.O. Box 140 • Sartell, Minnesota 56377 • 612/253-2171

November 16, 1988

Ms. Joan Growe  
Secretary of State  
180 State Office Building  
St. Paul, MN 55155-1299

Dear Ms. Growe:

Enclosed please find a copy of Ordinance No. 88-5, an ordinance annexing city owned land. This ordinance was adopted by the Sartell City Council on November 14, 1988.

The ordinance has been sent to the State Municipal Board and the annexation will be final upon their approval.

Sincerely,

A handwritten signature in cursive script that reads "Susan J. Mueller".

Susan J. Mueller, CMC  
City Administrator-Clerk-Treasurer

SJM/pls

Enclosures

ORDINANCE NO. 88-5

AN ORDINANCE EXTENDING THE CORPORATE LIMITS  
OF SARTELL TO INCLUDE CITY OWNED  
ROAD RIGHT-OF-WAY

WHEREAS, IT HAS BEEN DETERMINED AN ERROR WAS MADE IN DEFINING PROPERTY ANNEXED TO THE CITY OF SARTELL IN 1975 AND CITY OWNED ROAD RIGHT-OF-WAY WAS OMITTED FROM THE LEGAL DESCRIPTION, AND SUCH CITY LAND CONTAINS CITY UTILITIES; AND

WHEREAS, THE SARTELL CITY COUNCIL WISHES TO CORRECT THE ERROR AND PURSUANT TO M.S. 414.033, SUBD. 2, THE CITY CAN PROCEED TO ANNEX CITY OWNED LAND;

THE COUNCIL OF THE CITY OF SARTELL, MINNESOTA ORDAINS AS FOLLOWS:

SECTION 1. DETERMINATION OF NEED. THE CITY COUNCIL HEREBY DETERMINES THE ANNEXATION WILL BE TO THE BEST INTEREST OF THE CITY AND THE LAND DESCRIBED HEREIN IS CITY OWNED LAND AND IS URBAN IN CHARACTER AND NONE OF THE LAND IS NOW INCLUDED WITHIN THE LIMITS OF ANY OTHER INCORPORATED CITY.

SECTION 2. TERRITORY ANNEXED. THE CORPORATE LIMITS OF THE CITY OF SARTELL ARE HEREBY EXTENDED TO INCLUDE THE LAND DESCRIBED AS FOLLOWS AND THE SAME IS HEREBY ANNEXED TO AND INCLUDED WITHIN THE CITY AS EFFECTUALLY AS IT HAD ORIGINALLY BEEN A PART THEREOF, TO WIT;

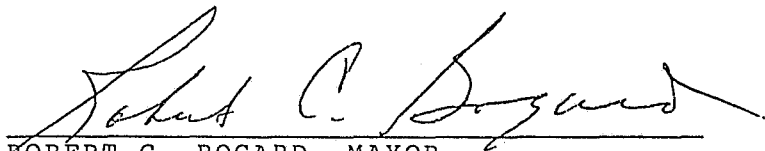
THAT PART OF 9TH AVENUE NORTH THAT IS PLATTED IN MEYER PARK PLAT 5, ACCORDING TO THE PLAT THEREOF ON FILE AND OF RECORD IN THE OFFICE OF THE RECORDER, STEARNS COUNTY, MINNESOTA AND IS BOUNDED ON THE NORTH BY A STRAIGHT LINE DRAWN FROM THE SOUTHEAST CORNER OF LOT 7, BLOCK 1 TO THE SOUTHWEST CORNER OF LOT 1, BLOCK 4, ALL IN SAID MEYER PARK PLAT 5; AND IS BOUNDED ON THE SOUTH BY THE NORTH RIGHT-OF-WAY LINE OF TERRY LANE AS PLATTED IN MEYER PARK PLAT 3, ACCORDING TO THE PLAT THEREOF ON FILE AND OF RECORD IN THE OFFICE OF THE RECORDER, STEARNS COUNTY, MINNESOTA. SAID PARCEL CONTAINS 0.268 ACRES OF LAND, MORE OR LESS.

SAID PROPERTY BEING ANNEXED TO THE CITY OF SARTELL UNDER ZONING CLASSIFICATION OF R-1 SINGLE FAMILY RESIDENCE DISTRICT.

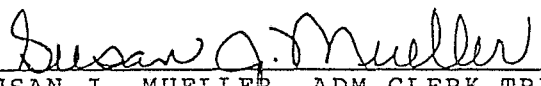
SECTION 3. FILING. THE CITY CLERK IS HEREBY DIRECTED TO FILE CERTIFIED COPIES OF THIS ORDINANCE WITH THE MINNESOTA MUNICIPAL BOARD, THE STEARNS COUNTY AUDITOR, THE TOWN OF LE SAUK AND THE SECRETARY OF STATE.

SECTION 4. EFFECTIVE DATE OF ANNEXATION. THIS ORDINANCE WILL TAKE EFFECT UPON PASSAGE AND PUBLICATION AND THE FILING OF THE CERTIFIED COPIES AS HEREIN DIRECTED, AND UPON THE MUNICIPAL BOARDS APPROVAL.

PASSED BY THE SARTELL CITY COUNCIL THIS 14<sup>th</sup> DAY OF November, 1988.

  
ROBERT C. BOGARD, MAYOR

ATTEST:

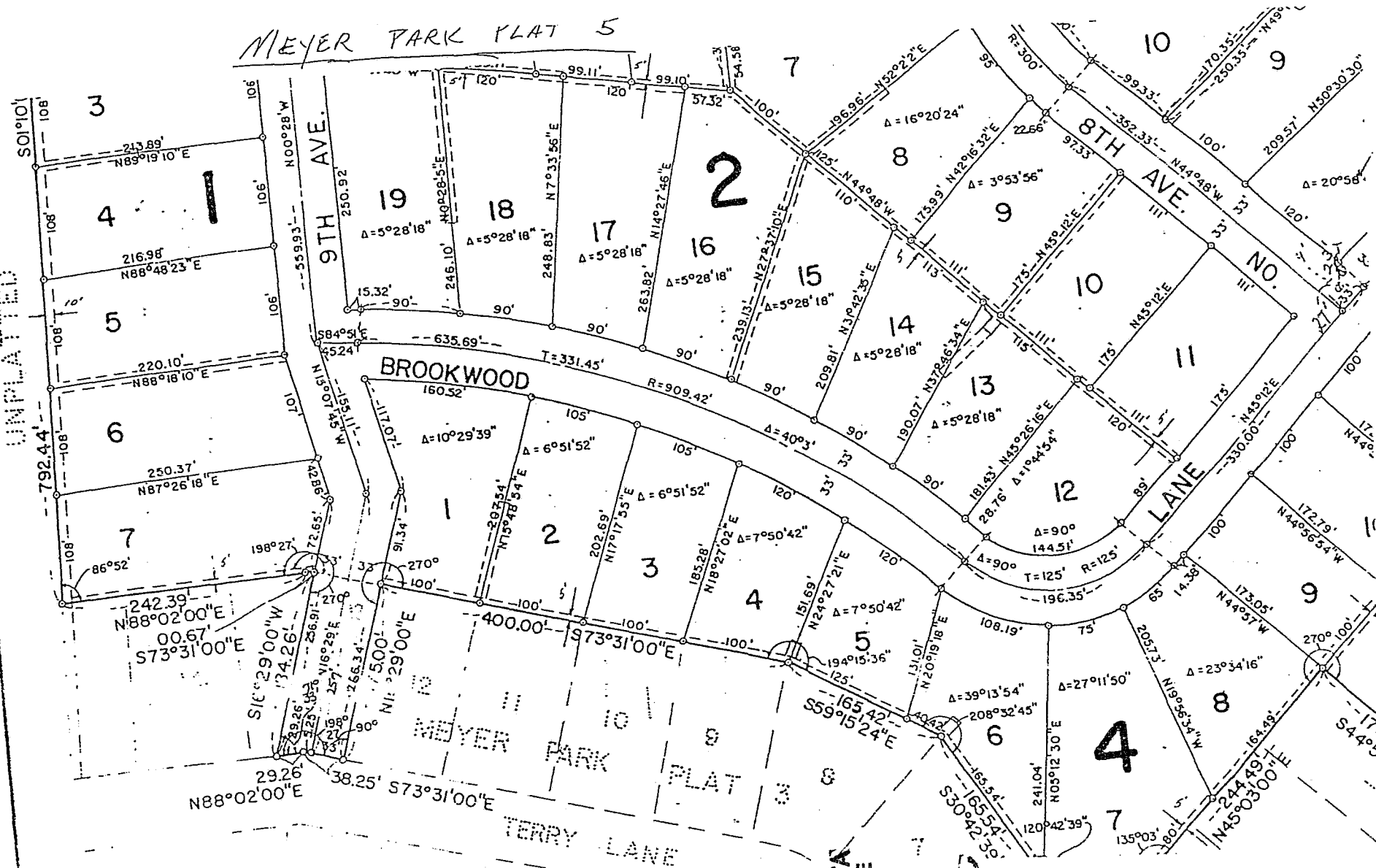
  
SUSAN J. MUELLER, ADM-CLERK-TREASURER

SEAL

PUBLISHED IN THE ST. CLOUD DAILY TIMES \_\_\_\_\_, 1988.

UNPLATTED

# MEYER PARK PLAT 5



STATE OF MINNESOTA  
DEPARTMENT OF STATE  
FILED

DEC 15 1993

*Janet Anderson Moore*  
Secretary of State

138605