



STATE OF MINNESOTA
MUNICIPAL BOARD

Suite 165 Metro Square
7th & Robert Streets
St. Paul, Minnesota 55101

August 3, 1988

Shirley Schaub
City Clerk-Treasurer
525 Main Street
P. O. Box 295
Madison Lake, Minnesota 56063

Docket Number A-4444

Correcting
Ordinance Number 141 *dated 7/11/88*

City of Madison Lake

Dear Ms. Schaub:

The Minnesota Municipal Board has now processed and approved the above ordinance in accordance with Minnesota Statutes, Chapter 414, and the Rules of Procedure.

According to law, this annexation ordinance must be filed with the Township Clerk, County Auditor, Secretary of State, and the Municipal Board. (Since the ordinance has already been filed with the Municipal Board, no additional copies are required.) We also recommend that you file the ordinance with the County Recorder.

The annexation is final upon the date the ordinance is approved by the Board, which is the date of this letter.

Sincerely,

MUNICIPAL BOARD

Pat Lundy
Patricia D. Lundy
Assistant Director

138284

PDL:sg

cc: Blue Earth County Auditor
Jamestown Township Clerk
Secretary of State

STATE OF MINNESOTA
DEPARTMENT OF STATE
FILED

AUG 11 1988

Frank Anderson Howe
Secretary of State

Madison Lake

CITY OF MADISON LAKE

525 MAIN STREET
POST OFFICE BOX 295
MADISON LAKE, MINNESOTA 56063

January 18, 1988

Office of the Secretary of State
Miscellaneous Documents Section
Room 180 State Office Building
Saint Paul, Minnesota 55155

Re: Annexation Proceedings MMB Docket #A4444, Madison Lake

Enclosed please find documents to complete the proceedings of annexation of a .094 acre parcel of land to the northeast corporate limits of the City of Madison Lake:

1. Madison Lake Ordinance 141, certified copy.
2. Resolution of Waiver of Objection, Jamestown Town.
3. Legal Description of parcel to be annexed.
4. Plat maps showing location of parcel. (highlighted)

If additional information is necessary, please write to me at the address above or call 507 243 3011.

Sincerely,

Shirley Schaub

Shirley Schaub
Clerk treasurer

Ordinance 141

MMB-#A-4444

AN ORDINANCE EXTENDING THE CORPORATE LIMITS OF THE CITY OF MADISON LAKE TO INCLUDE CERTAIN UNINCORPORATED PLATTED LAND ABUTTING UPON THE CITY LIMITS.

WHEREAS, a certain petition dated November 9, 1987, requesting annexation of the territory hereinafter described was duly presented to the Madison Lake City Council on the ninth day of November, 1987; and

WHEREAS, the petition was signed by all owners; and

WHEREAS, a waiver of objection to annexation has been received from Jamestown Township, the only government body whose boundaries abut upon the boundaries of the land to be annexed; and

WHEREAS, the land described in the petition abuts upon the city limits at the north and east boundary thereof;

NOW THEREFORE, the City Council of Madison Lake, Minnesota, ordains:

Section 232.01. The City Council hereby determines (1) that the territory described herein abuts upon the city limits and is about to become urban or suburban in character; and (2) that none of the territory is now included within the limits of any city.

Section 232.02. The population of the territory is zero.


Section 232.03. Territory Annexed. The corporate limits of the City of Madison Lake are hereby extended to include the platted land described as follows and the same is hereby annexed to and included within the city as effectually as if it had originally been a part thereof:

"Northwest quarter of northeast section of Section 34,
Town 109, Range 25, .940 acres."

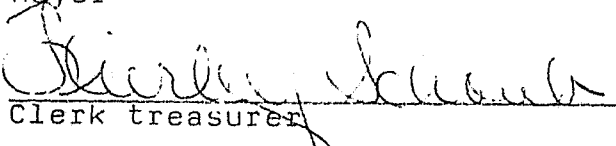
Section 232.04. Filing. The City Clerk is hereby directed to file certified copies of this ordinance with the Minnesota Municipal Board, the Secretary of State, the Town Clerk, and the County Auditor.

Section 232.05. Effective Date. This ordinance takes effect upon its passage and publication and the filing of the certified copies as directed in Section 3, and approval of the ordinance by the Minnesota Municipal Board.

Adopted by the Madison Lake City Council this eleventh day of January, 1988.



Mayor

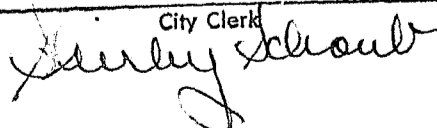


Clerk treasurer

I, Shirley Schaub, Clerk of the City of Madison Lake, do hereby certify that I have compared the attached copy of _____ with the original on file in the office of the City Clerk, and that it is a true and correct transcript therefrom and the whole of said _____.

In witness whereof, I have set my hand and affixed the Seal of the City of Madison Lake this 18th day of January 1988

City Clerk



4.a

MMB #A-4444

RESOLUTION OF WAIVER OF OBJECTION TO ANNEXATION

WHEREAS, the town Board of Jamestown Township, Blue Earth County, has received notice of intention of the Council of the City of Madison Lake to annex certain lands adjoining the corporate limits of the City of Madison Lake; and

WHEREAS, such land is urban or suburban in character, or about to become so;

NOW THEREFORE, the Town Board of Jamestown Township hereby waives the 90-day notice period so that the City of Madison Lake may, pursuant to M.S. 414.033, Subdivision 2, annex the following described territory:

Northwest quarter of northeast section of
Section 34, Town 109, Range 25, 940.acres.

Adopted by the town board of Jamestown Township,
Blue Earth County, Minnesota, Dec 15, 1987.

Marshall Rayner
Town Chairman

Michael Bil
Town Clerk

EXHIBIT A

Lots 1, 2, 3, 4, 5, and 6, Block 1, Madison Lake Townsite; Lots 1, 2 and 3, Block 8, Madison Lake Townsite and that portion of the Northeast Quarter of the Northeast Quarter of Section 34, Township 109 North, Range 25 West, Blue Earth County, Minnesota, legally described as follows:

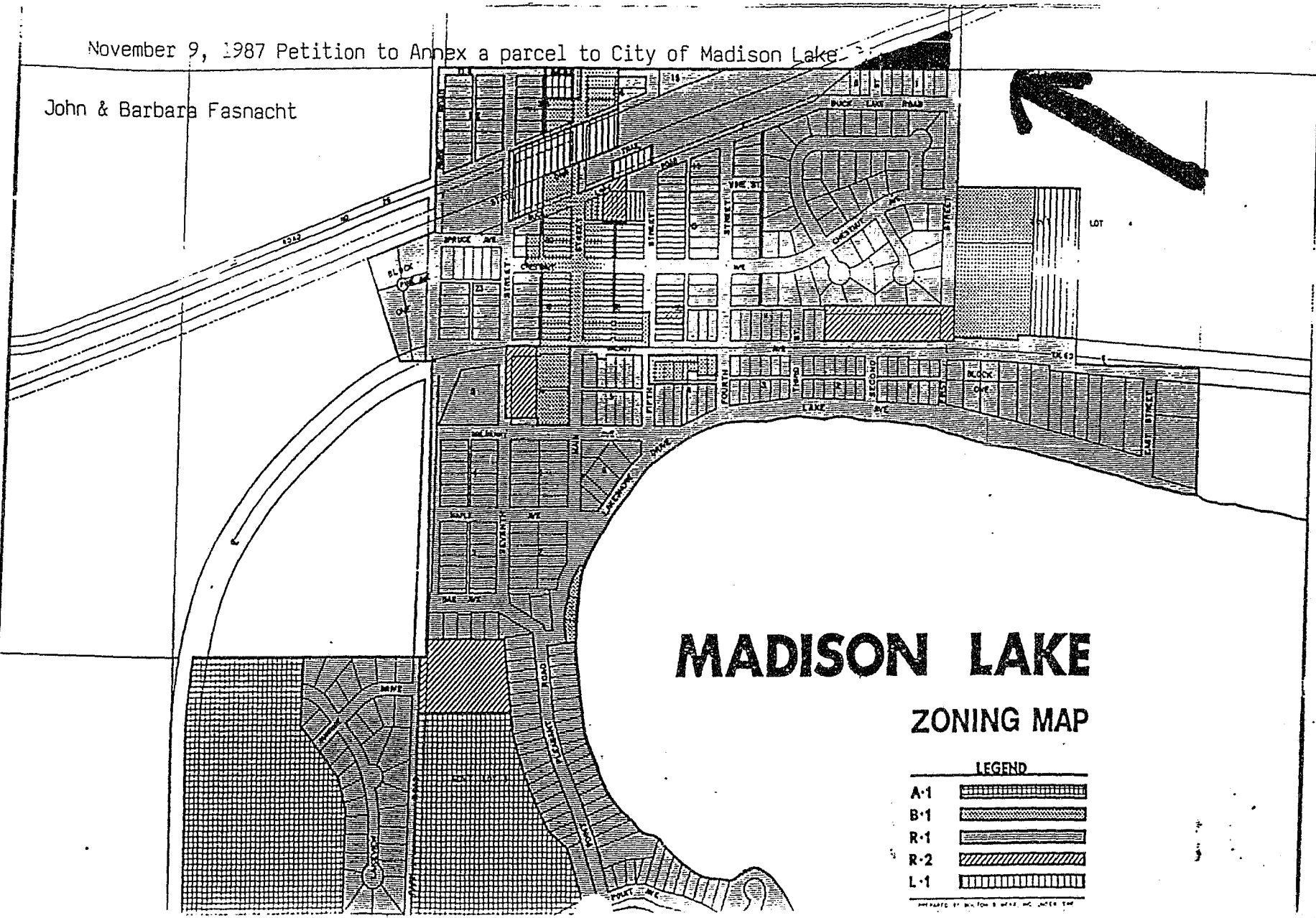
Beginning at the Southeast corner of the Northeast Quarter of the Northeast Quarter of said Section 34, Township 109 North, Range 25 West, thence running due North about $10\frac{1}{2}$ rods to the right-of-way of the former Minneapolis and St. Louis railroad line, thence Southwest about 31 rods along the South line of said right-of-way to the point where the South line of said right-of-way intersects the South line of said right-of-way to the point where the South line of said right-of-way intersects the South line of said Northeast Quarter of the Northeast Quarter of Section 34; thence due east about 29 rods to the place of beginning, containing in all $15/16$ of an acre more or less. All of the above land being in Blue Earth County, Minnesota.

MMB Docket #A-4444

Agenda Section 5-g

November 9, 1987 Petition to Annex a parcel to City of Madison Lake

John & Barbara Fasnacht



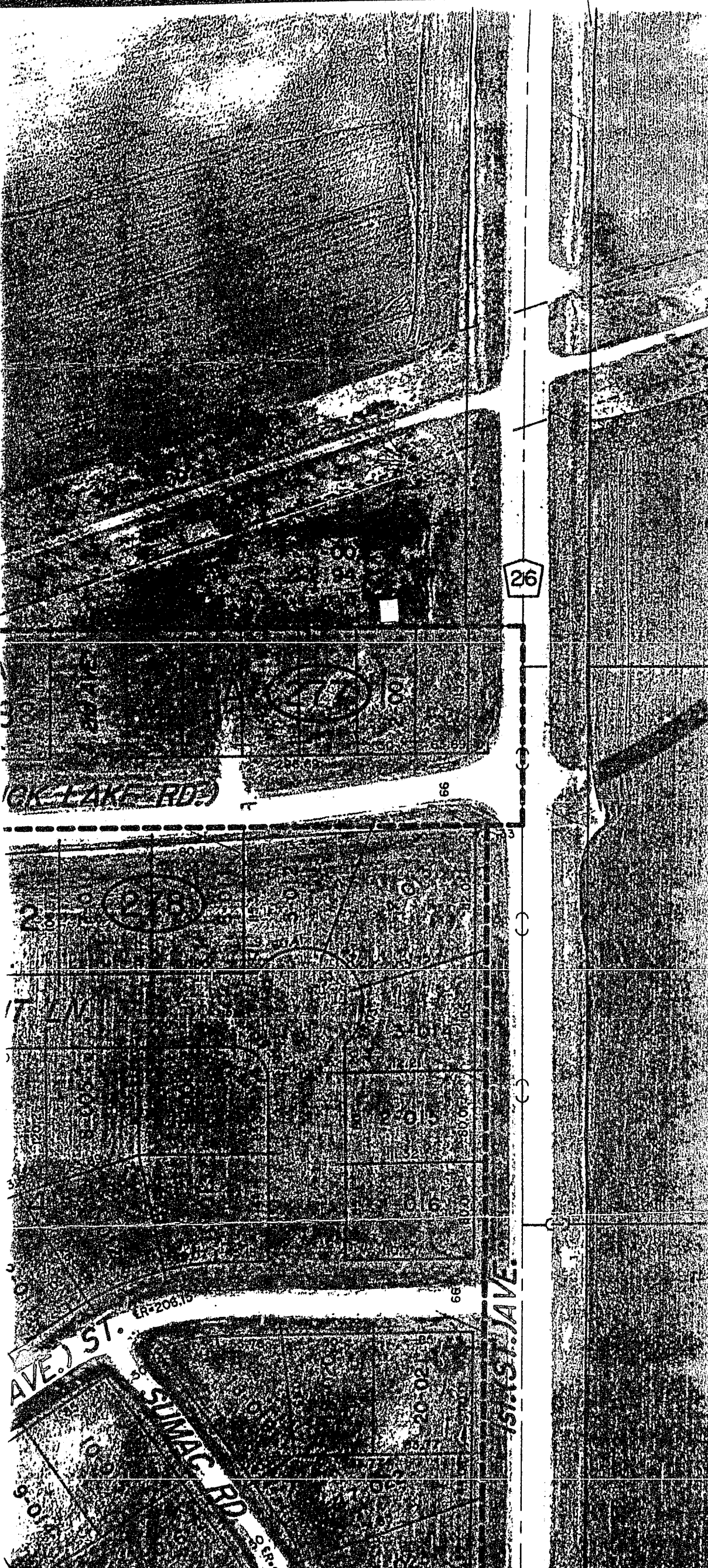
MADISON LAKE

ZONING MAP

LEGEND

A-1	
B-1	
R-1	
R-2	
L-1	

PREPARED BY WILSON & WEAVER, INC. JANUARY 1987



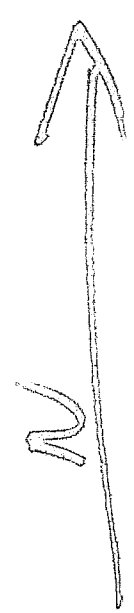
38284

STATE OF MINNESOTA
DEPARTMENT OF STATE
FILED

AUG 1 1998

John Anderson
Secretary of State

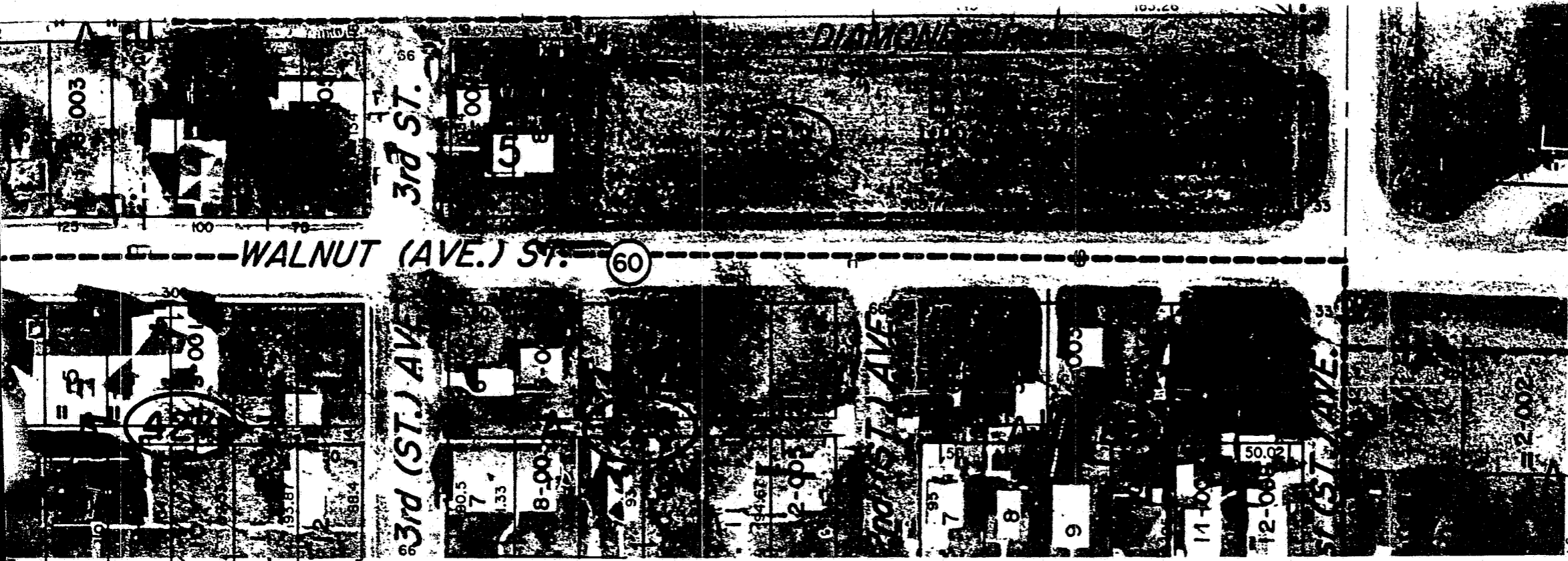
See Page 5-R



See
over



THIS DOCUMENT IS
OF POOR QUALITY



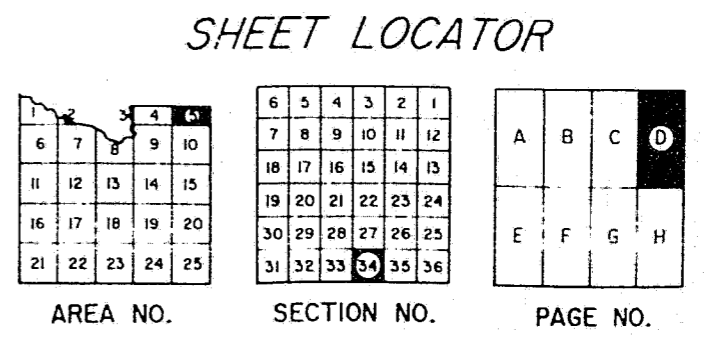
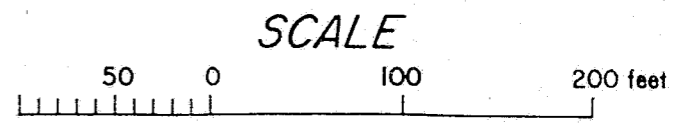
See Page 5-34H

ME REFERENCE "A"
 CK NO. 5
 NO. 12
 GEL BLOCK NO. 100
 GEL NC. 00-00-000-000
 E. NO. -00
 40.00
 SYMBOLS
 14
 60
 35

JAMESTOWN TWP.

E. 1/2 N.E. 1/4 SEC. 34 T. 109N. R. 25W.

BLUE EARTH COUNTY, MINNESOTA



THIS DOCUMENT IS OF POOR QUALITY

