



STATE OF MINNESOTA
MUNICIPAL BOARD

Suite 165 Metro Square
7th & Robert Streets
St. Paul, Minnesota 55101

May 14, 1987

Mary Lou Johnson
Stillwater City Clerk
216 North 4th Street
Stillwater, Minnesota 55082

Docket Number A-4394

Ordinance Number 657

City of Stillwater

Dear Ms. Johnson:

The Minnesota Municipal Board has now processed and approved the above ordinance in accordance with Minnesota Statutes, Chapter 414, and the Rules of Procedure.

According to law, this annexation ordinance must be filed with the Township Clerk, County Auditor, Secretary of State, and the Municipal Board. (Since the ordinance has already been filed with the Municipal Board, no additional copies are required.) We also recommend that you file the ordinance with the County Recorder.

The annexation is final upon the date the ordinance is approved by the Board, which is the date of this letter.

Sincerely,

MUNICIPAL BOARD


Patricia D. Lundy
Assistant Director

PDL:sg

cc: Washington County Auditor
Stillwater Township Clerk
David T. Magnuson, Stillwater City Attorney
Secretary of State

137314
STATE OF MINNESOTA
DEPARTMENT OF STATE
FILED
MAY 20 1987

Secretary of State



ORDINANCE NO. 657

AN ORDINANCE EXTENDING THE CORPORATE LIMITS OF
THE CITY OF STILLWATER INTO CERTAIN UNINCORPORATED
TERRITORY THAT IS COMPLETELY SURROUNDED BY LAND
WITHIN THE CITY LIMITS

WHEREAS, certain territory described below is not presently included within the corporate limits of any incorporated city or borough; and

WHEREAS, this territory is completely surrounded by lands already included within the corporate limits of the city and the land is deemed to be urban or suburban in character;

NOW THEREFORE, the City Council of the City of Stillwater ordains:

Section 1. Territory Annexed. The corporate limits of the City of Stillwater, Minnesota, are hereby extended to include the unplatted territory described as follows:

That part of the NE $\frac{1}{4}$ of the NW $\frac{1}{4}$ of Section 29, the Township 30N, R20W that is East of the center line of County State Aid Road No. 5 also known as Stillwater Blvd. North, excepting therefrom the North 450 thereof.

This territory now is, and has been completely surrounded by territory already included within the city limits.

The territory being annexed is shown on the map attached hereto as Exhibit "A".

Section 2. Filing. The City Clerk is directed to file certified copies of this ordinance with the Secretary of State, the County Auditor of Washington County, Minnesota, the Town Clerk of the Township of Stillwater, Minnesota, and the Minnesota Municipal Board.

Section 3. Effective Date of Annexation. This ordinance takes effect upon passage and publication and the filing of certified copies as directed in Section 2 and approval of the Minnesota Municipal Board.

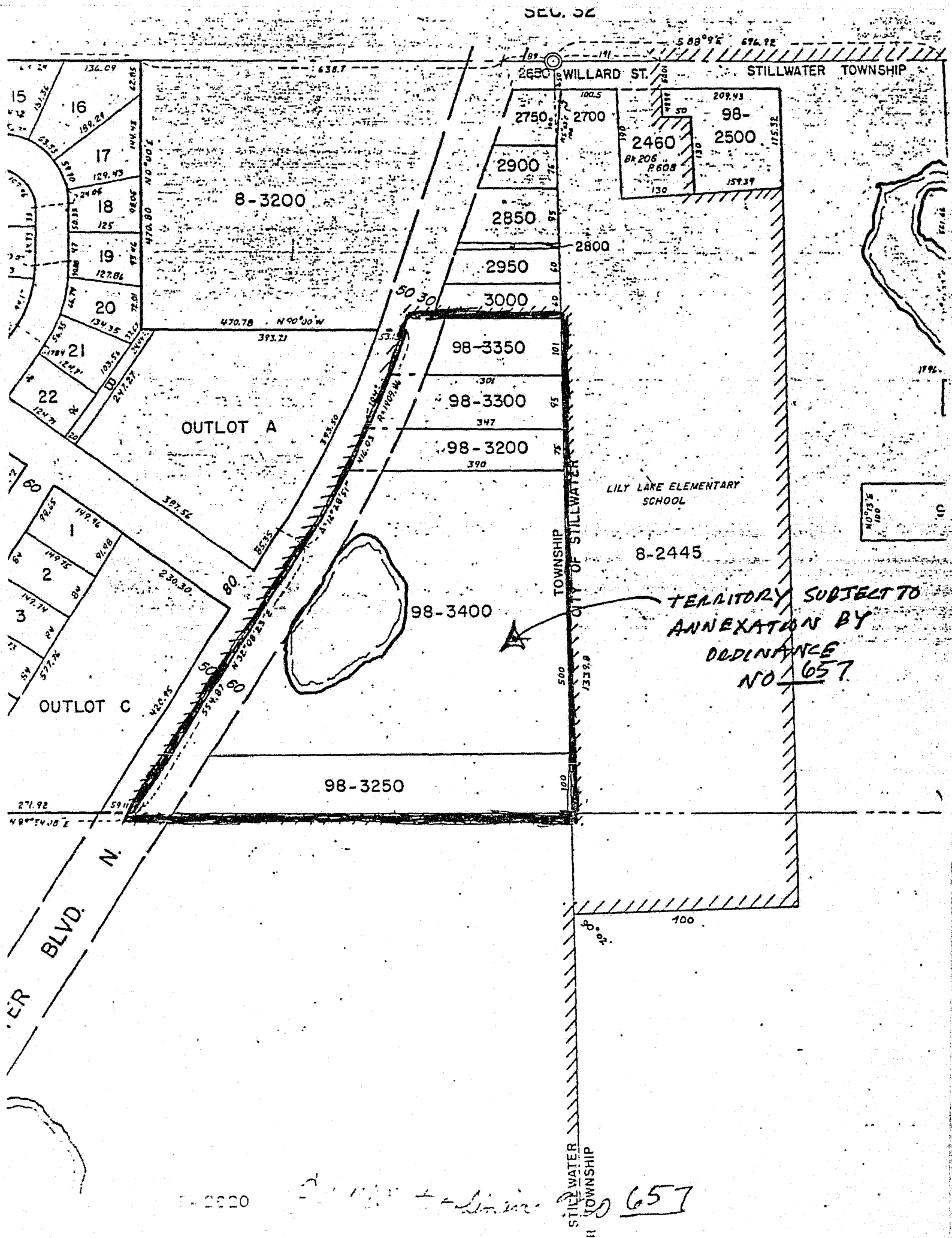
Adopted by the City Council of Stillwater, Minnesota, this 1st day of April, 1987.

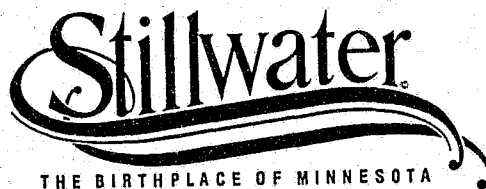
Wally Abrahamson
Wally Abrahamson, Mayor

Attest:

Mary Lou Johnson
Mary Lou Johnson, City Clerk

Published in Stillwater Gazette
on April 24, 1987.





CERTIFICATION

STATE OF MINNESOTA
COUNTY OF WASHINGTON
CITY OF STILLWATER

I, Mary Lou Johnson, City Clerk of the City of Stillwater, Minnesota do hereby certify that the foregoing Ordinance No. 657, Extending The Corporate Limits of The City of Stillwater, is a true and correct copy of an Ordinance adopted by the Stillwater City Council on April 7, 1987.

Mary Lou Johnson
CITY CLERK

SEAL

STATE OF MINNESOTA
DEPARTMENT OF STATE
FILED
MAY 20 1987
Jean Anderson Howe
Secretary of State

37314

CITY HALL: 216 NORTH FOURTH STILLWATER, MINNESOTA 55082 PHONE: 612-439-6121

Stillwater
MAGNUSON & DIEPERINK

ATTORNEYS AT LAW

THE GRAND GARAGE & GALLERY
324 SOUTH MAIN STREET
STILLWATER, MINNESOTA 55082
(612) 439-9464

David T. Magnuson
Ann L. Dieperink

April 28, 1987

Susan L. Thorn
Administrative Assistant
Lisa Gidlow Moriarty
Legal Assistant

Ms. Joan Growe
Secretary of State
180 State Office Building
St. Paul, MN 55155

Mr. James Stafford
County Auditor
Washington County Courthouse
Stillwater, MN 55082

Ms. Patricia Bantli, Clerk
Stillwater Township
13565 - 116th Street North
Stillwater, MN 55082

Minnesota Municipal Board
165 Metro Square Building
St. Paul, MN 55101

Enclosed and filed with you is a corrected copy of City of Stillwater Ordinance No. 657, which annexes land within the Township of Stillwater that is completely surrounded by the City of Stillwater. This annexation is being done pursuant to Minnesota Statutes 414.033, Subdivision 2, Subparagraph b.

This filing is made with each of you pursuant to Minnesota Statute 414.033, Subd. 7.

I respectfully request that the executive secretary of the Municipal Board send to me written confirmation of their approval so that we might know the precise date when the annexation is final.

Yours very truly,

David T. Magnuson
David T. Magnuson

DTM/st
Enclosure

STATE OF MINNESOTA
DEPARTMENT OF STATE
FILED
MAY 20 1987
Joan Anderson Howe
Secretary of State

37314

ORDINANCE NO. 657
(CORRECTED)

AN ORDINANCE EXTENDING THE CORPORATE LIMITS OF
THE CITY OF STILLWATER INTO CERTAIN UNINCORPORATED
TERRITORY THAT IS COMPLETELY SURROUNDED BY LAND
WITHIN THE CITY LIMITS

WHEREAS, certain territory described below is not presently included within the corporate limits of any incorporated city or borough; and

WHEREAS, this territory is completely surrounded by lands already included within the corporate limits of the city and the land is deemed to be urban or suburban in character;

NOW THEREFORE, the City Council of the City of Stillwater ordains:

Section 1. Territory Annexed. The corporate limits of the City of Stillwater, Minnesota, are hereby extended to include the unplatted territory described as follows:

That part of the NE $\frac{1}{4}$ of the NW $\frac{1}{4}$ of Section 32, the Township 30N, R20W that is East of the center line of County State Aid Road No. 5 also known as Stillwater Blvd. North, excepting therefrom the North 450 thereof.

This territory now is, and has been completely surrounded by territory already included within the city limits.

The territory being annexed is shown on the map attached hereto as Exhibit "A".

Section 2. Filing. The City Clerk is directed to file certified copies of this ordinance with the Secretary of State, the County Auditor of Washington County, Minnesota, the Town Clerk of the Township of Stillwater, Minnesota, and the Minnesota Municipal Board.

Section 3. Effective Date of Annexation. This ordinance takes effect upon passage and publication and the filing of certified copies as directed in Section 2 and approval of the Minnesota Municipal Board.

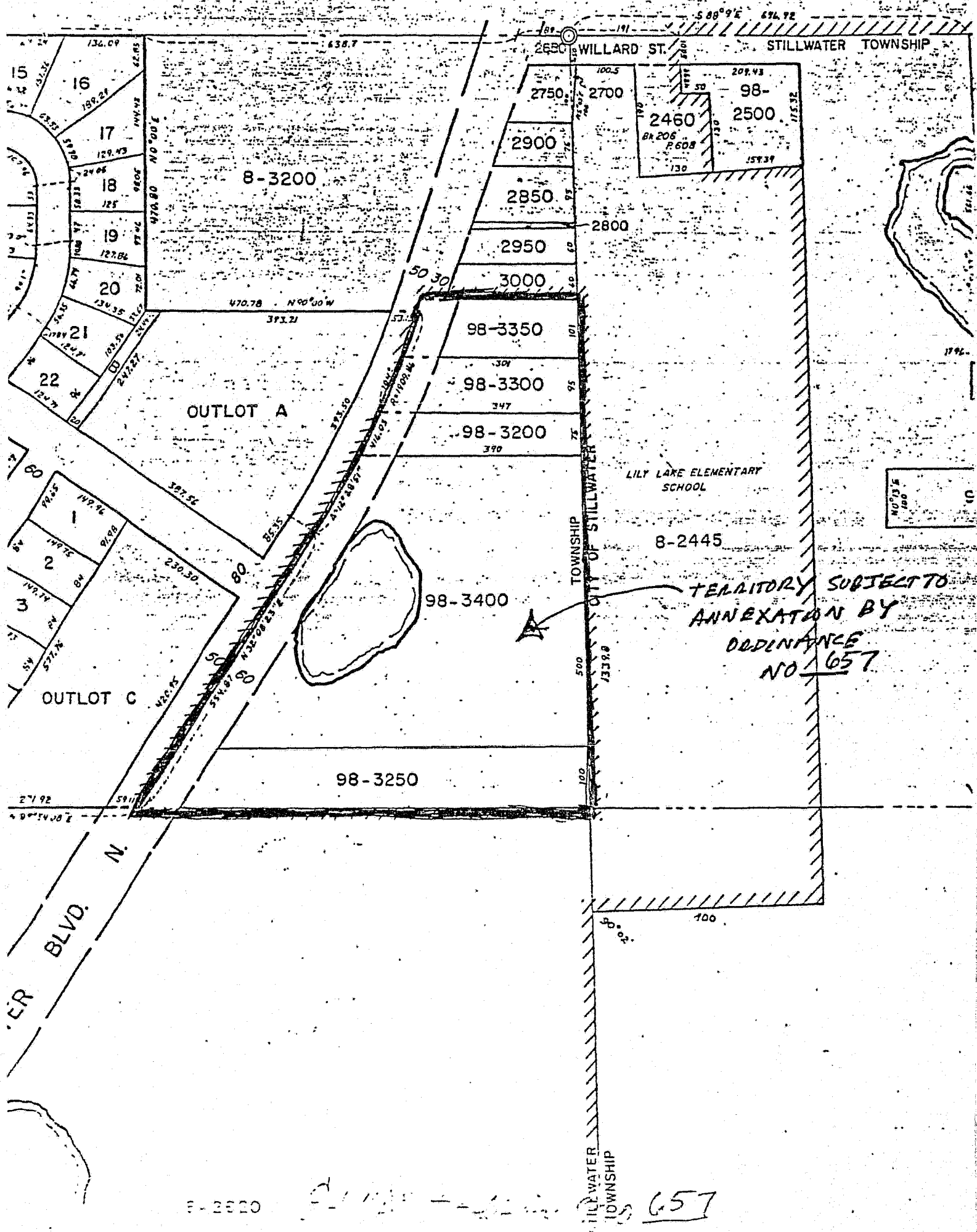
Adopted by the City Council of Stillwater, Minnesota, this 17th day of April, 1987.

Wally Abrahamson
Wally Abrahamson, Mayor

Attest:

Mary Lou Johnson
Mary Lou Johnson, City Clerk

Published in Stillwater Gazette
on April 24, 1987.





CERTIFICATION

STATE OF MINNESOTA
COUNTY OF WASHINGTON
CITY OF STILLWATER

I, Mary Lou Johnson, City Clerk of the City of Stillwater, Minnesota do hereby certify that the foregoing Ordinance No. 657, Extending The Corporate Limits of The City of Stillwater, is a true and correct copy of an Ordinance adopted by the Stillwater City Council on April 7, 1987.

Mary Lou Johnson
CITY CLERK

SEAL

STATE OF MINNESOTA
DEPARTMENT OF STATE

FILED

MAY 20 1987

Joan Anderson Howe
Secretary of State

437314

CITY HALL: 216 NORTH FOURTH STILLWATER, MINNESOTA 55082 PHONE: 612-439-6121