



STATE OF MINNESOTA
MUNICIPAL BOARD

Suite 165 Metro Square
7th & Robert Streets
St. Paul, Minnesota 55101

December 11, 1986

Carla Raberge
City Clerk
202 East Jackson Street
Box 3368
Mankato, Minnesota 56001

Docket Number A-4354

Ordinance Number 0-86-1124-230

City of Mankato

Dear Ms. Raberge:

The Minnesota Municipal Board has now processed and approved the above ordinance in accordance with Minnesota Statutes, Chapter 414, and the Rules of Procedure.

According to law, this annexation ordinance must be filed with the Township Clerk, County Auditor, Secretary of State, and the Municipal Board. (Since the ordinance has already been filed with the Municipal Board, no additional copies are required.) We also recommend that you file the ordinance with the County Recorder.

The annexation is final upon the date the ordinance is approved by the Board, which is the date of this letter.

Sincerely,

MUNICIPAL BOARD

Pat Lundy
Patricia D. Lundy
Assistant Director

PDL:sg

cc: Blue Earth County Auditor
Mankato Township Clerk
James Harberts, Planning Director
Secretary of State

137047
STATE OF MINNESOTA
DEPARTMENT OF STATE
FILED
DEC 16 1986
John Anderson Brown
Secretary of State



Mankato

CITY OF MANKATO, MINNESOTA

202 East Jackson Street
Box 3368, Mankato, MN 56001
Telephone: 507-625-3161

December 12, 1986

Secretary of State
180 State Office Building
St. Paul, MN 55155

Dear Secretary Growe:

As per State Law, I am enclosing an annexation ordinance adopted by the Mankato City Council of a strip of land 100 percent surrounded by the City of Mankato. This annexation was approved by the Minnesota Municipal Board on December 11, 1986. This particular piece of property was found to have not been included in any previous annexation.

Please contact me if there are any questions.

Sincerely,

James Harberts
Planning Director

JH/dbb

Enclosures

0-86-1124-230

AN ORDINANCE TO ANNEX CERTAIN
PROPERTY TO THE CITY OF MANKATO PER
MINNESOTA STATUTES 414.033, SUBDIVISION 2(b)

WHEREAS, certain property described below has been found to not have been included in a previous annexation procedure and is not within the corporate limits of any incorporated city, village, or borough; and

WHEREAS, said property is completely surrounded by land already included within the corporate limits of the City of Mankato, does not exceed 40 acres and provides access right-of-way to property already annexed to the City of Mankato;

THE CITY OF MANKATO HEREBY FINDS THAT:

1. The land described herein is surrounded by the City.
2. The land described herein was thought to have been previously annexed to the City of Mankato.
3. That said described property presents a non-incorporated island of property surrounded by the City.
4. That annexation of this parcel will enhance the City's ability to plan for utilities and streets in this part of the City.

NOW, THEREFORE, THE CITY OF MANKATO HEREBY ORDAINS that the corporate limits of the City are hereby extended to include the land described as follows and the same is hereby annexed to and included within the City as effectively as if it had originally been part thereof:

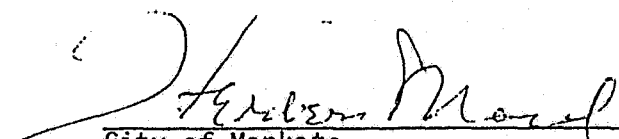
That part of the Northwest Quarter of the Southeast Quarter (NW 1/4, SE 1/4), Section 19, Township 108 North, Range 26 West, described as follows:

Beginning at the Northeast corner of the Northwest Quarter of the Southeast Quarter of said Section 19, thence 38 feet west; thence 1,039.5 feet south; thence 38 feet east; thence 1,039.5 feet North to the point of beginning. Said property containing .90 acres.


The City Clerk is hereby directed to file certified copies of this ordinance with the Minnesota Municipal Board, the Secretary of State, the Blue Earth County Auditor and Mankato Township.

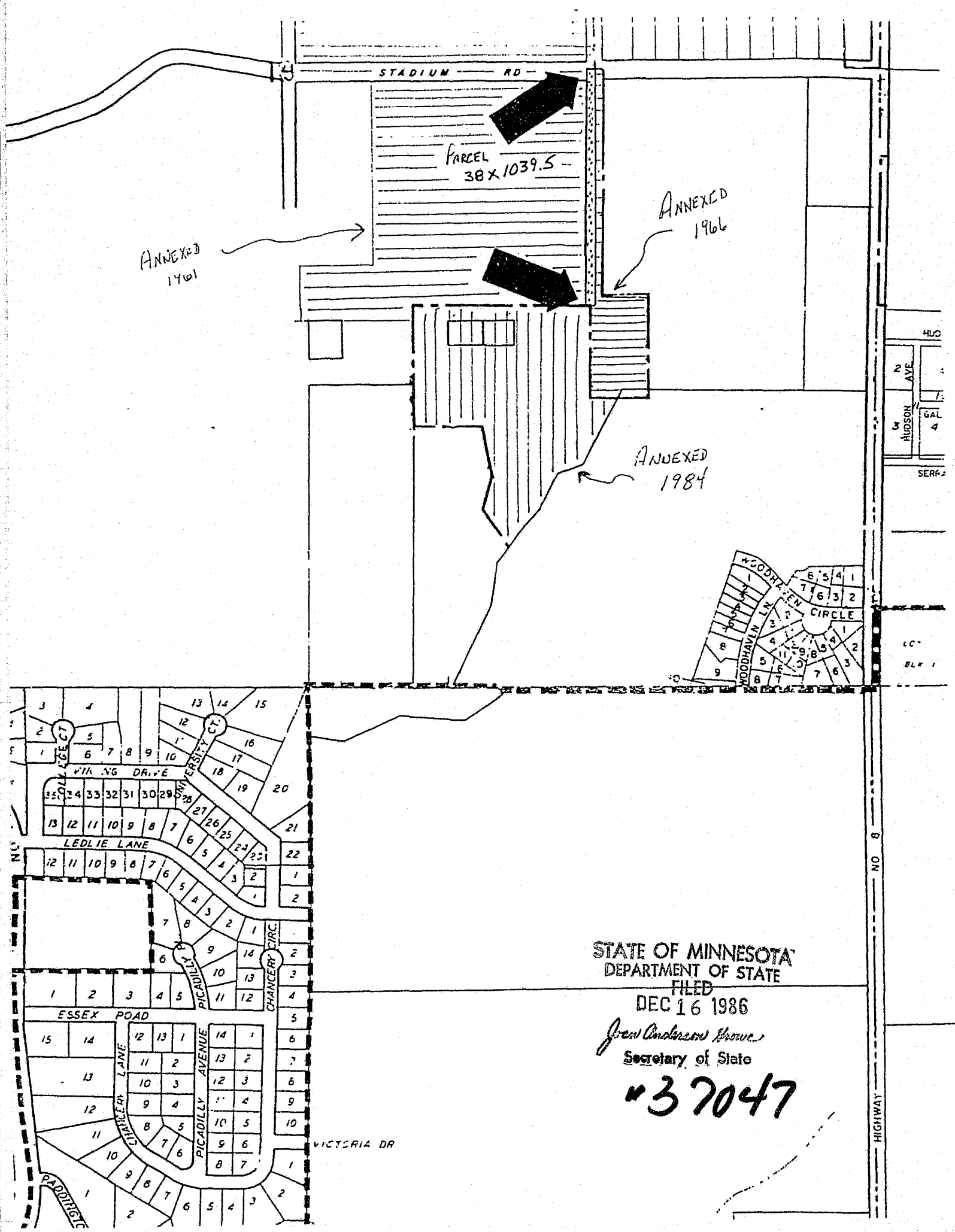
This ordinance shall take effect 30 days after the date of its passage and due publication and filing thereof.

Adopted this 24th day of November, 1986.


City of Mankato
Herbert Mocol, Mayor

ATTEST:


Carla Raberge
City Clerk



STATE OF MINNESOTA
 DEPARTMENT OF STATE
 FILED
 DEC 16 1986
John Anderson Browne
 Secretary of State

#37047

400
 HUDSON AVE
 GAL 4
 SERFA

CC
 BLK 1

NO 8
 HIGHWAY

STADIUM RD

PARCEL
 38 X 1039.5

ANNEXED
 1961

ANNEXED
 1966

ANNEXED
 1984

WOODHAVEN CIRCLE
 6 5 4 1
 7 6 3 2
 8 2
 9 8 5 1
 10 7 6 3
 11 8 7
 12 9 8 7

3 4 13 14 15
 2 5 12 16
 1 6 7 8 9 10 11 17 18 19 20
 13 12 11 10 9 8 7 6 5 4 3 2 1
 12 11 10 9 8 7 6 5 4 3 2 1
 7 8 2 1
 6 9 14 13 12 11 10 9 8 7 6 5 4 3 2 1
 1 2 3 4 5
 15 14 12 13 1 14 1
 11 2 13 2
 10 3 12 3
 9 4 11 4
 8 5 10 5
 7 6 9 6
 8 7 8 7
 1 2
 9 8 7 6 5 4 3 2
 1 2

VICTORIA DR