



STATE OF MINNESOTA
MUNICIPAL BOARD

Suite 165 Metro Square
7th & Robert Streets
St. Paul, Minnesota 55101

June 12, 1986

Laurie Rauenhorst
City Clerk
1001 Belgrade Avenue
P.O. Box 2055
North Mankato, Minnesota 56001

Docket Number A-4313

Ordinance Number 79, 3rd Series

City of North Mankato

Dear Ms. Rauenhorst:

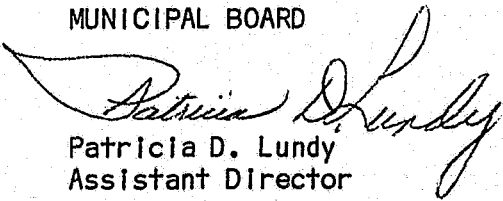
The Minnesota Municipal Board has now processed and approved the above ordinance in accordance with Minnesota Statutes, Chapter 414, and the Rules of Procedure.

According to law, this annexation ordinance must be filed with the Township Clerk, County Auditor, Secretary of State, and the Municipal Board. (Since the ordinance has already been filed with the Municipal Board, no additional copies are required.) We also recommend that you file the ordinance with the County Recorder.

The annexation is final upon the date the ordinance is approved by the Board, which is the date of this letter.

Sincerely,

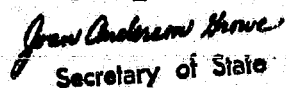
MUNICIPAL BOARD


Patricia D. Lundy
Assistant Director

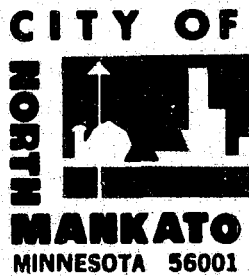
PDL:sg

cc: Nicollet County Auditor
Belgrade Township Clerk
Dianne McPherson, Community Development Planner
Secretary of State

STATE OF MINNESOTA
DEPARTMENT OF STATE
FILED
JUN 16 1986


Secretary of State

136723



Mankato

May 12, 1986

Minnesota Secretary of State
Room 180
State Office Building
Wabasha Street
St. Paul, MN 55155

IN RE: Annexation of Part of Pleasantview Drive

Dear Secretary of State:

You will find enclosed with this letter the proposed Annexation Ordinance and a map of the City of North Mankato outlining the location of the property proposed to be annexed.

Respectfully yours,

THE CITY OF NORTH MANKATO

Dianne D. McPherson

Dianne D. McPherson
Community Development Planner

DDM:mp

Enclosures

ORDINANCE NO. 79, SERIES III

AN ORDINANCE OF THE CITY OF NORTH MANKATO, MINNESOTA,
DECLARING CERTAIN LAND TO BE ANNEXED TO SUCH CITY, IDENTIFIED AS
PART OF PLEASANTVIEW DRIVE.

THE CITY COUNCIL OF THE CITY OF NORTH MANKATO, MINNESOTA,
ORDAINS:

Section 1. The following tract of unincorporated property
abutts upon the municipal limits of the City of North Mankato,
Minnesota.

Section 2. The legal description of said land is shown upon
Exhibit A, attached hereto and the same is incorporated herein by
reference.

Section 3. Such land is now or is about to become urban or
suburban in character.

Section 4. Such land is completely surrounded by land within
the municipal limits of such city.

Section 5. The amount of acreage involved in this annexation
is less than one acre.

Section 6. Such land is hereby declared annexed to the City
of North Mankato, Minnesota, and is declared to be included
within its municipal limits.

Section 7. After adoption, signing and attestation, this
ordinance shall be published once in the official newspaper of
the City and shall be in effect on and after the day following
such publication and the date this ordinance is approved by the
Municipal Board of the State of Minnesota.

Adopted by the City Council this 5th day of May, 1986.


Mayor

ATTEST:

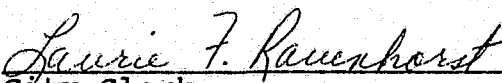
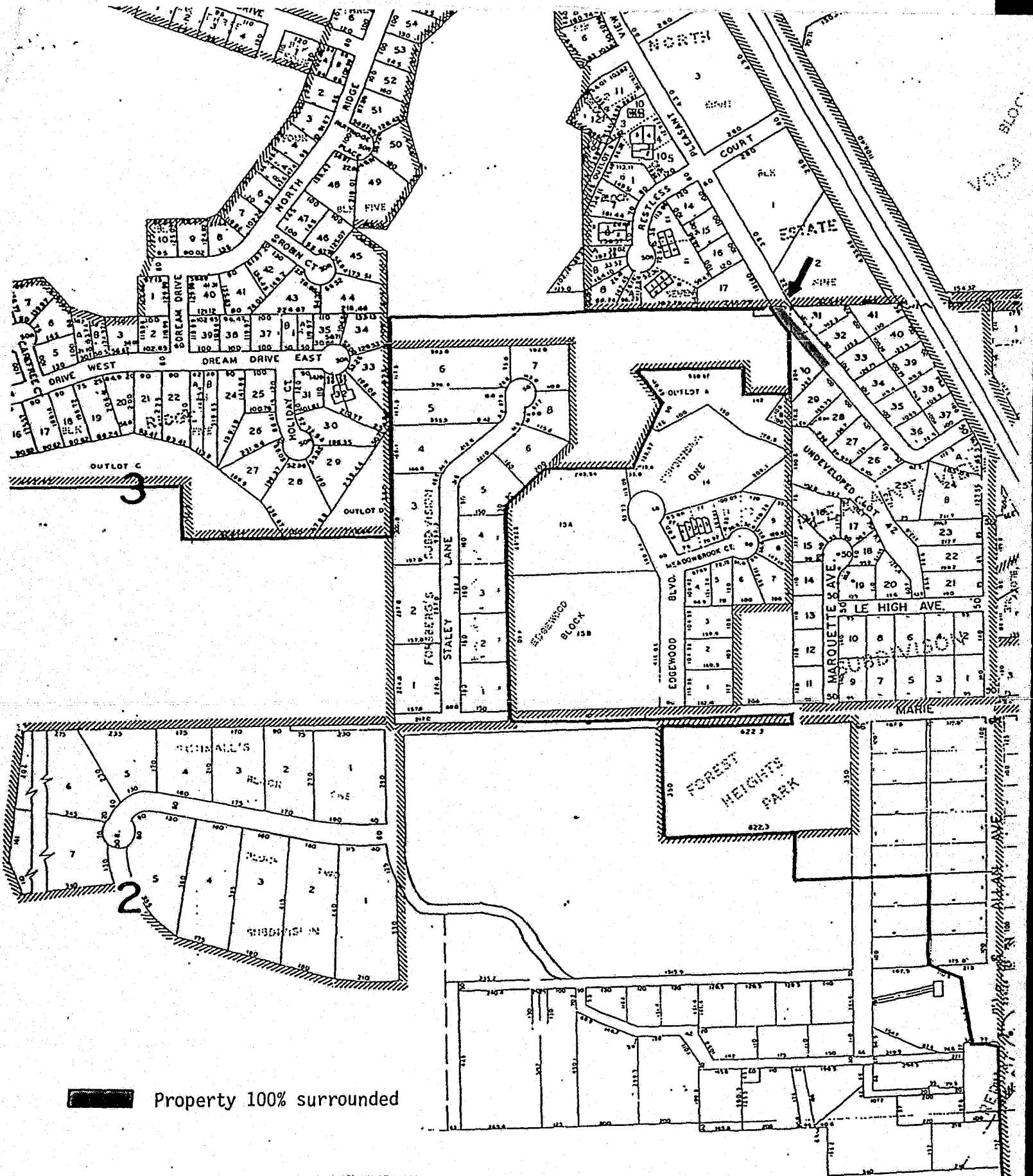

City Clerk

EXHIBIT A

PLEASANTVIEW DRIVE

All that part of Pleasantview Drive located within the City of North Mankato, not already annexed into the City. This parcel contains less than 1 acre.



Property 100% surrounded

STATE OF MINNESOTA
 DEPARTMENT OF STATE
 FILED
 JUN 16 1986

36723

Jean Anderson Howe
 Secretary of State

J.M.T.S.