



**STATE OF MINNESOTA
MUNICIPAL BOARD**

Suite 165 Metro Square
7th & Robert Streets
St. Paul, Minnesota 55101

May 9, 1986

Mary Lou Johnson
City Clerk
216 North 4th Street
Stillwater, Minnesota 55082

Docket Number A-4308

Ordinance Number 638

City of Stillwater

Dear Ms. Johnson:

The Minnesota Municipal Board has now processed and approved the above ordinance in accordance with Minnesota Statutes, Chapter 414, and the Rules of Procedure.

According to law, this annexation ordinance must be filed with the Township Clerk, County Auditor, Secretary of State, and the Municipal Board. (Since the ordinance has already been filed with the Municipal Board, no additional copies are required.) We also recommend that you file the ordinance with the County Recorder.

The annexation is final upon the date the ordinance is approved by the Board, which is the date of this letter.

Sincerely,

MUNICIPAL BOARD

Patricia D. Lundy
Patricia D. Lundy
Assistant Director

PDL:sg

cc: Washington County Auditor
Stillwater Township Clerk
David T. Magnuson, City Attorney
Raymond Senkus, Stillwater Town Board Chair
Secretary of State

30664
STATE OF MINNESOTA
DEPARTMENT OF STATE
FILED
MAY 14 1986
Jan Anderson Howe
Secretary of State

Stillwater

MAGNUSON & DIEPERINK

ATTORNEYS AT LAW

THE GRAND GARAGE & GALLERY
324 SOUTH MAIN STREET
STILLWATER, MINNESOTA 55082
(612) 439-9464

David T. Magnuson
Ann L. Dieperink

October 11, 1985

Susan L. Thorn
Administrative Assistant
Lisa Gidlow Moriarty
Legal Assistant

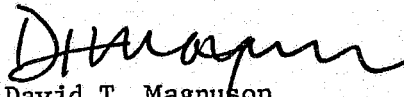
Secretary of State
180 State Office Building
St. Paul, MN 55155

To whom it may concern:

Enclosed herewith and served upon you by mail and provided to you for filing is a copy of an Ordinance of the City of Stillwater annexing a tiny portion of land from the Township of Stillwater.

Please call if you have any questions.

Yours very truly,


David T. Magnuson
Stillwater City Attorney

DTM/st
Enclosure

ORDINANCE NO. 638

AN ORDINANCE EXTENDING THE CORPORATE LIMITS OF THE CITY OF STILLWATER INTO CERTAIN UNINCORPORATED TERRITORY THAT IS MORE THAN SIXTY PERCENT SURROUNDED BY LAND WITHIN THE CITY LIMITS

WHEREAS, certain territory described below is not presently included within the corporate limits of any incorporated city or borough; and

WHEREAS, this territory is more than sixty percent surrounded by lands already included within the corporate limits of the city and the land is deemed to be urban or suburban in character;

NOW THEREFORE, the City Council of the City of Stillwater ordains:

Section 1. Territory Annexed. The corporate limits of the City of Stillwater, Minnesota, are hereby extended to include the unplatted territory described as follows (which territory now is and has heretofore been more than sixty percent surrounded by territory already included within the city limits):

All that part of Section Twenty-nine (29), Township Thirty (30), Range Twenty (20) West legally described as follows:

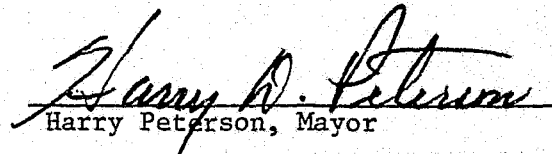
Commencing at the Northwest corner of the Northwest Quarter of the Southwest Quarter of Sections Twenty-nine (29), and running thence South on the West line thereof for a distance of Five (5) rods, thence East a distance of One (1) rod, thence North on a line parallel with the West line of said tract a distance of Five (5) rods to the North line of the Northwest Quarter of the Southwest Quarter; since West on said Quarter line a distance of One (1) rod to the place of beginning.

Section 2. Filing. The City Clerk is directed to file certified copies of this ordinance with the Secretary of State, the County Auditor of Washington County, Minnesota, the Town Clerk of the Township of Stillwater, Minnesota, and the Minnesota Municipal Commission.

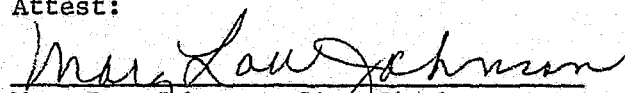
Section 3. Effective Date of Annexation. This ordinance takes effect upon passage and publication and the filing of certified copies as directed

in Section 2 and approval of a Minnesota Municipal Commission.

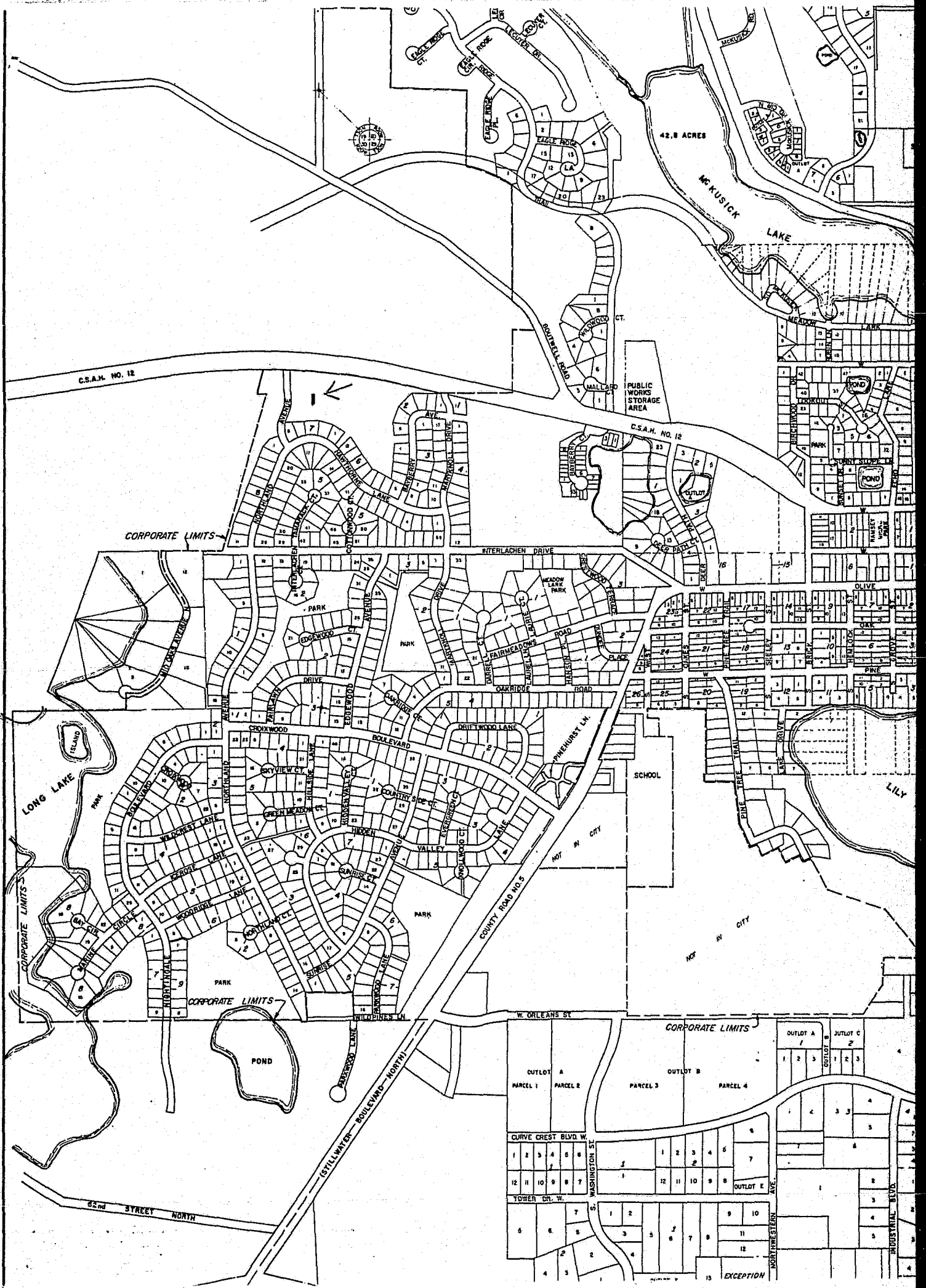
Adopted by the City Council of Stillwater, Minnesota, this 17th
day of September, 1985.


Harry Peterson, Mayor

Attest:


Mary Lou Johnson, City Clerk

Published in Stillwater Gazette
on September 27, 1985.



EXCEPTION

MAYOR:
Harry D. Peterson

COUNCILMEMBERS:
Ann Marie Bodlovick
David C. Junker
Jay Kimble
Brad MacDonald



CITY COORDINATOR:
Nile L. Kriesel
CITY CLERK:
Mary Lou Johnson
FINANCE DIRECTOR:
Betty J. Caruso
CITY ATTORNEY:
David T. Magnuson

Certification

Ordinance No. 638

STATE OF MINNESOTA
COUNTY OF WASHINGTON
CITY OF STILLWATER

I, Mary Lou Johnson, City Clerk of the City of Stillwater, Minnesota do hereby certify that the foregoing Ordinance is a true and correct copy of an Ordinance adopted by the Stillwater City Council on the 17th day of September, 1985.

A handwritten signature in cursive script that reads "Mary Lou Johnson".

Seal

36664
STATE OF MINNESOTA
DEPARTMENT OF STATE
FILED
MAY 14 1986
Joan Anderson Howe
Secretary of State