



STATE OF MINNESOTA
MUNICIPAL BOARD

Suite 165 Metro Square
7th & Robert Streets
St. Paul, Minnesota 55101

February 13, 1986

D. E. Mack
City Clerk-Treasurer
Box 373
East Grand Forks, Minnesota 56721

Docket Number A-4200

Ordinance Number 60, 3rd Series

City of East Grand Forks

Dear Mr. Mack:

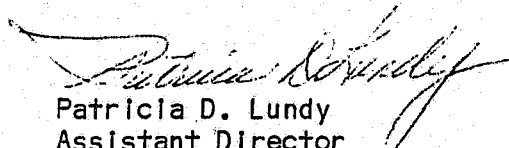
The Minnesota Municipal Board has now processed and approved the above ordinance in accordance with Minnesota Statutes, Chapter 414, and the Rules of Procedure.

According to law, this annexation ordinance must be filed with the Township Clerk, County Auditor, Secretary of State, and the Municipal Board. (Since the ordinance has already been filed with the Municipal Board, no additional copies are required.) We also recommend that you file the ordinance with the County Recorder.

The annexation is final upon the date the ordinance is approved by the Board, which is the date of this letter.

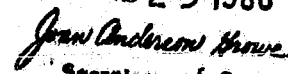
Sincerely,

MUNICIPAL BOARD


Patricia D. Lundy
Assistant Director

PDL:sg

cc: Polk County Auditor
Sullivan Township Clerk
R. F. Studer, Dist. Land Mgmt. Engineer
✓ Secretary of State

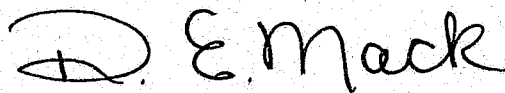
STATE OF MINNESOTA
DEPARTMENT OF STATE
FILED
FEB 25 1986

Secretary of State

36474

C E R T I F I C A T E

I, D. E. Mack, Clerk-Treasurer of the City of East Grand Forks, Minnesota, hereby certify that the attached Ordinance is a true and exact copy of the original on file in the office of the Clerk-Treasurer.

Dated this 23rd day of January, 19 86



D. E. Mack,
Clerk-Treasurer

ORDINANCE NO. 60 - 3RD SERIES

AN ORDINANCE EXTENDING THE CORPORATE LIMITS OF THE CITY OF EAST GRAND FORKS, MINNESOTA, TO INCLUDE CERTAIN UNPLATTED LAND IN SECTION 31, TOWNSHIP 152 NORTH, RANGE 49 WEST OF THE FIFTH PRINCIPAL MERIDIAN, POLK COUNTY, MINNESOTA, NOT EXCEEDING 200 ACRES, WHICH TRACT CONTAINS 4.04 ACRES, MORE OR LESS.

The City Council of the City of East Grand Forks, Minnesota, do ordain:

Section 1. A petition has been filed with the State of Minnesota Municipal Board by Ronald F. Studer, District Land Management Engineer, Minnesota Department of Transportation, to have such land included within the city limits of the City of East Grand Forks, Minnesota, that copies of said petition were filed with the Minnesota Municipal Board, the Town Board of Sullivan Township, the County Board of Polk County, Minnesota, and the Municipal Council of any other municipalities which borders the land to be annexed; that more than ninety (90) days have elapsed since such filings of said petition, and that no objections have been filed as is more fully shown by the records and files herein.

Section 2. That the tract of land being annexed is described as follows, to-wit:

That part of the Southeast Quarter of the Southeast Quarter of Section 31, Township 152 North, Range 49 West of the 5th Principle Meridian, described as follows:

Commencing at the southeast corner of said Section 31, thence North 89 degrees 43 minutes 19 seconds West, on an assumed bearing along the south line said Section 31, a distance of 1108.93 feet; thence North 00 degrees 16 minutes 41 seconds East, at a right angle to the south line of Section 31, a distance of 116.00 feet to a point on the northerly line of a Public Roadway, said point being the true point of beginning of the tract to be described: thence continuing North 00 degrees 16 minutes 41 seconds East a distance of 300.00 feet; thence South 89 degrees 43 minutes 19 seconds East, parallel with the south line of Section 31, a distance of 507.03 feet to the intersection with a line lying parallel with and 66.00 feet distant southwesterly from the southwesterly line of Trunk Highway No. 2; thence southeasterly along said line lying parallel with the southwesterly line of Trunk Highway No. 2, on a non tangential curve, concave to the southwest, radius 2150.84 feet, central angle 4 degrees 48 minutes 11 seconds a distance of 180.30 feet (chord bearing South 35 degrees 18 minutes 50 seconds East) ; thence South 00 degrees 11 minutes 38 seconds West a distance of 153.43 feet to the north line of the aforesaid Public Roadway; thence North 89 degrees 43 minutes 19 seconds West, along the north line of the said

Public Roadway, a distance of 612.17 feet to the true point of beginning, said described tract comprised of 4.04 acres more or less.

Section 3. That the quantity of said land herein described is five (5) acres, more or less.

Section 4. That the Minnesota Department of Transportation hereby determines:

1. That the quantity of land embraced within the foregoing description is less than 200 acres.
2. That the annexation will be to the best interests of the City of East Grand Forks, Minnesota, and of the territory affected.
3. That the territory and land described above abuts the City of East Grand Forks, Minnesota, is suitably conditioned for municipal government, and is now urban and suburban in character, to-wit: industrial park.
4. That the petition for annexation was signed by Ronald F. Studer, District Land Management Engineer, on behalf of the Minnesota Department of Transportation.

Section 5. The corporate limits of the City of East Grand Forks, Minnesota, are hereby extended to include the property described in Section 2, and the same is hereby annexed to and included in the City of East Grand Forks, Minnesota, as effectually as if it had originally been a part thereof.

Section 6. To file certified copies of this Ordinance with the Minnesota Municipal Board, the Town Board of Sullivan Township, the County Board of Polk County, and the Municipal Council of any other municipalities which borders the land to be annexed.

Section 7. This Ordinance takes effect after its passage upon final approval by the Minnesota Municipal Board and the filing of the certified copies as directed in Section 6, and be given the Number 60 -, Third Series.

VOTING AYE: Wogaman, Gorman, Gander, LaFave, Hanson, Mongoven

VOTING NAY: None

ABSENT: Stauss

The President declared the Ordinance passed.

ATTEST:

PASSED: November 7, 1985

D. E. Mack

Clerk-Treasurer

Jim Gander

President of Council

I hereby approve the foregoing Ordinance this 12th day of
November, 1985.

Louis A. Murray

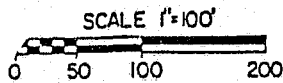
Mayor

MINNESOTA DEPARTMENT OF TRANSPORTATION

CERTIFICATE OF SURVEY

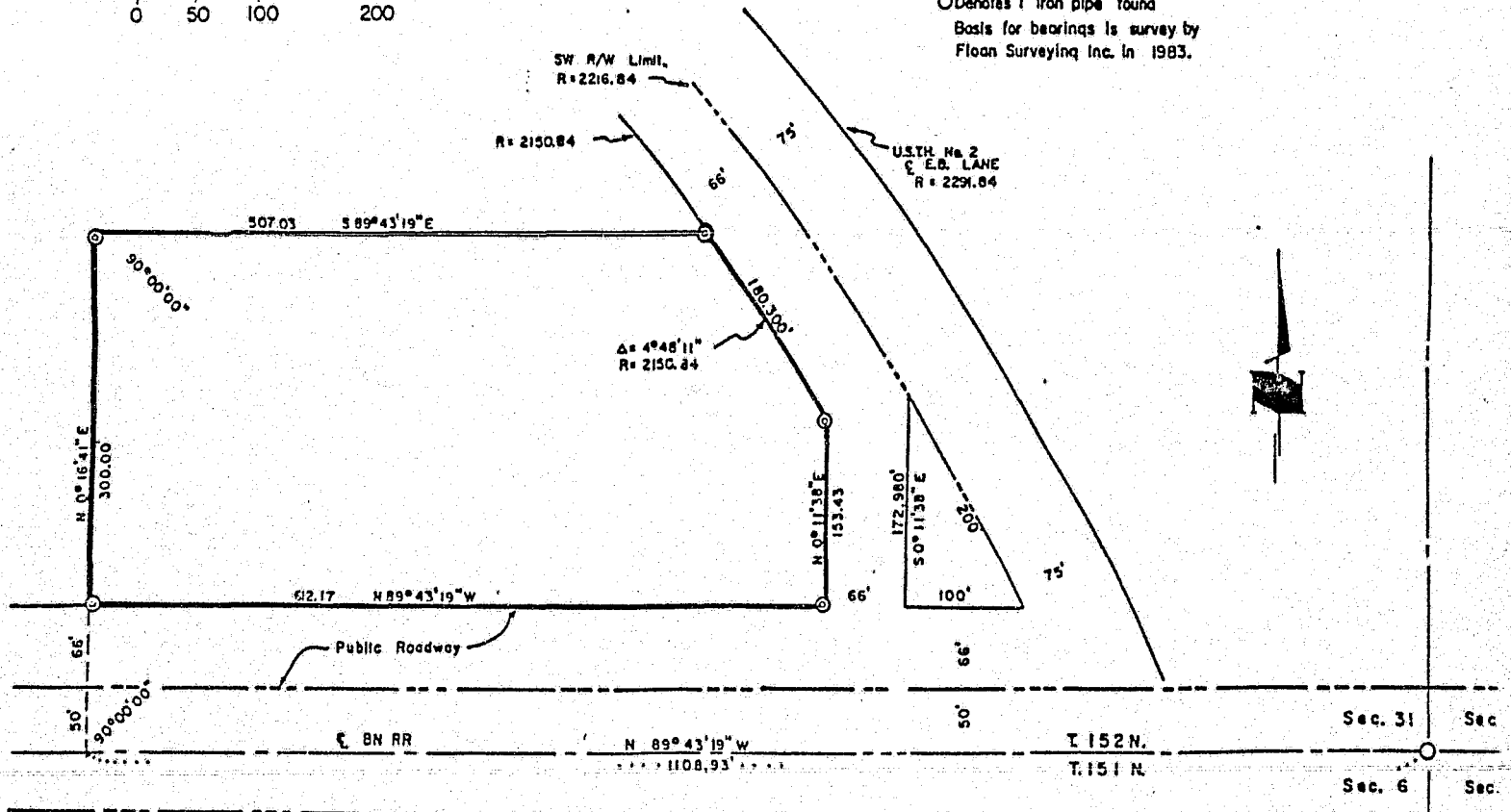
MSS 6019-1

Polk County



NOTE:

- ⊙ Denotes iron pin with Aluminum cap set
- Denotes 1" iron pipe found
- Basis for bearings is survey by
- Floren Surveying Inc. in 1983.

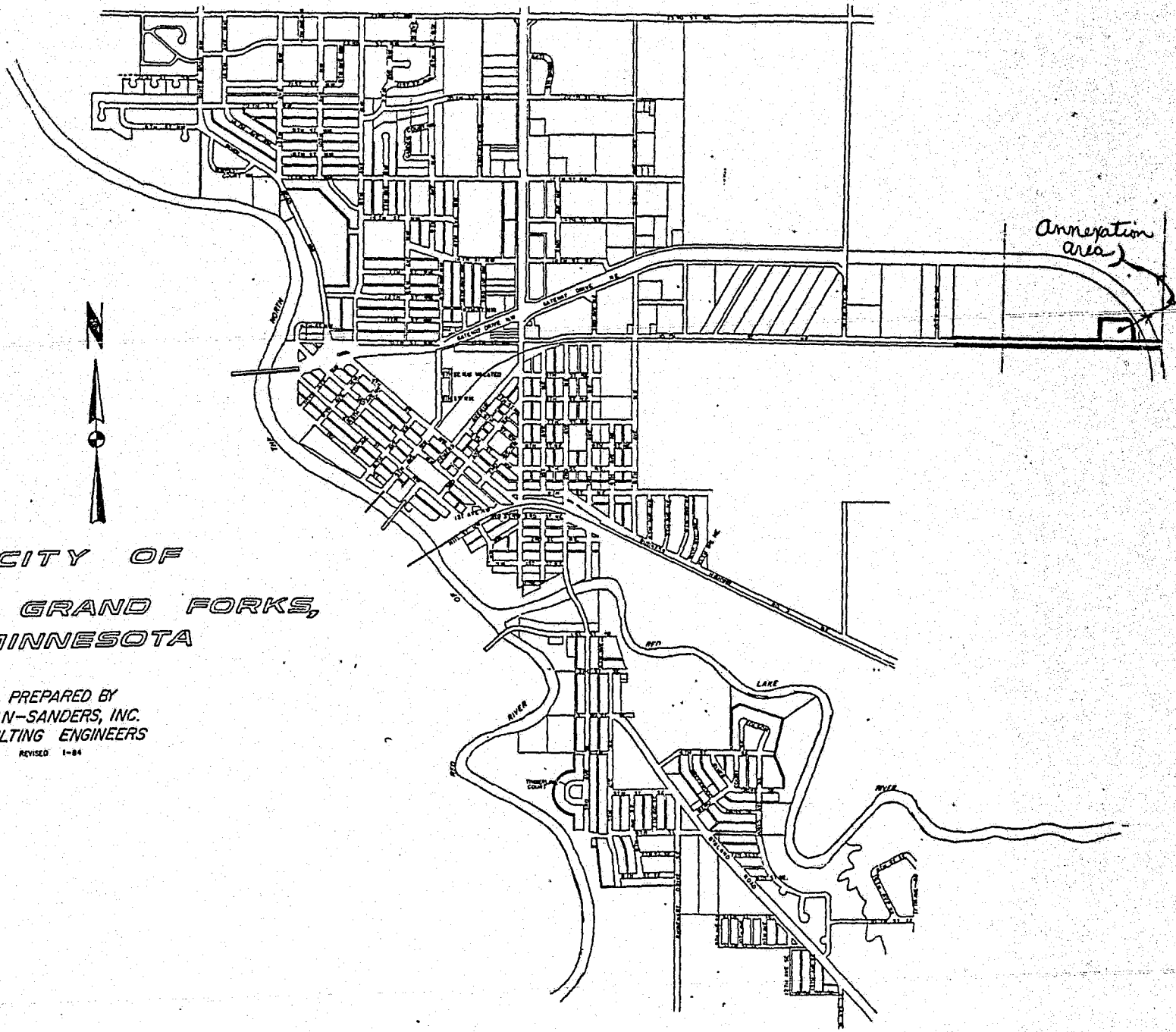


DESCRIPTION

That part of the Southeast Quarter of the Southeast Quarter of Section 31, Township 152 North, Range 49 West of the 5th Principle Meridian, described as follows: Commencing at the southeast corner of said Section 31, thence North 89 degrees 43 minutes 19 seconds West, on an assumed bearing along the south line said Section 31, a distance of 1108.93 feet; thence North 00 degrees 16 minutes 41 seconds East, at a right angle to the south line of Section 31, a distance of 150.00 feet to a point on the northerly line of a Public Roadway, said point being the true point of beginning of the tract to be described; thence continuing North 00 degrees 16 minutes 41 seconds East a distance of 300.00 feet; thence South 89 degrees 43 minutes 19 seconds East, parallel with the south line of Section 31, a distance of 507.03 feet to the intersection with a line lying parallel with and 66.00 feet distant southwesterly from the southwesterly line of Trunk Highway No. 2; thence southeasterly along said line lying parallel with the southwesterly line of Trunk Highway No. 2, on a non tangential curve, concave to the southwest, radius 2150.84 feet, central angle 4 degrees 48 minutes 11 seconds a distance of 150.30 feet (chord bearing South 35 degrees 18 minutes 50 seconds East); thence South 00 degrees 11 minutes 38 seconds West a distance of 153.43 feet to the north line of the aforesaid Public Roadway; thence North 89 degrees 43 minutes 19 seconds West, along the north line of the said Public Roadway, a distance of 812.17 feet to the true point of beginning, said described tract comprised of 4.04 acres more or less.

I hereby certify that this survey, plan, or report was prepared by me or under my direct supervision and that I am a duly Registered Land Surveyor under the laws of the State of Minnesota.

Signed Kenneth L. Downing
11-1-83 Reg. No. 14950



CITY OF
EAST GRAND FORKS,
MINNESOTA

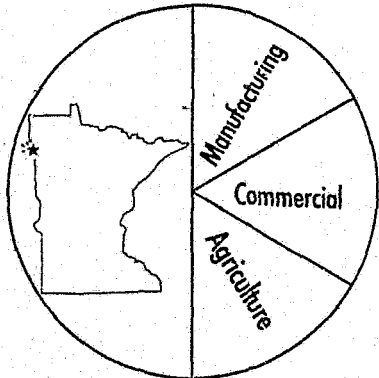
PREPARED BY
FLOAN-SANDERS, INC.
CONSULTING ENGINEERS
REVISED 1-84

E. Grand Forks

City of East Grand Forks

"Center of the Rich Red River Valley"

EAST GRAND FORKS, MINNESOTA 56721



D. E. MACK, Clerk-Treasurer
P.O. Box 373, Phone (218) 773-2483

January 23, 1986

LOUIS A. MURRAY
Mayor

JIM GANDER
President of Council
Alderman at Large

GEORGE E. WOGAMAN
Vice President
Alderman 5th Ward

LYNN STAUSS
Alderman 1st Ward

AL LAFAVE
Alderman 2nd Ward

PAUL J. HANSON
Alderman 3rd Ward

JIM MONGOVEN
Alderman 4th Ward

STEVE GORMAN
Alderman at Large

KARL F. A. LINDQUIST
City Attorney

Ms. Joan A. Grove, Secretary of State
State Capitol Building
St. Paul, Minnesota

Dear Ms. Grove:

Enclosed is a certified copy of Ordinance No. 60-3rd Series for filing as per M.S.A. Section 414.033, Subdivision 7.

A copy of said Ordinance has been filed with the Municipal Board, the County Auditor and the Town Clerk of Sullivan Township.

I would appreciate receiving some notification that said Ordinance has been received and filed in your office.

Thank you in advance.

Sincerely yours,

D. E. Mack

D. E. Mack,
Clerk-Treasurer

DEM: gmh
Enc.

36476

36476

O.P.