

An Equal Opportunity Employer

Phone: (612) 296-2428



**STATE OF MINNESOTA
MUNICIPAL BOARD**

Suite 165 Metro Square
7th & Robert Streets
St. Paul, Minnesota 55101

September 16, 1983

Mr. Robert Jellum
City Clerk
Waseca City Hall
508 South State
Waseca, Minnesota 56093

Re: Docket Number A-4036

Ordinance Number 513

City of Waseca

Dear City Clerk:

The Minnesota Municipal Board has now processed and approved the above ordinance in accordance with Minnesota Statutes, Chapter 414, and the Rules of Procedure.

According to law, this annexation ordinance must be filed with the Township Clerk, County Auditor, Secretary of State and the Municipal Board. (Since the ordinance has already been filed with the Municipal Board, no additional copies are required.) We also recommend that you file the ordinance with the County Recorder.

The annexation is final upon the date the ordinance is approved by the Board, which is the date of this letter.

Sincerely,

MUNICIPAL BOARD

A handwritten signature in cursive script that reads "Patricia D. Lundy".

Patricia D. Lundy
Assistant Director

PDL:sg

cc: Secretary of State
County Auditor
Township Clerk
Attorney
Municipality

STATE OF MINNESOTA
DEPARTMENT OF STATE
FILED

SEP 22 1983

A handwritten signature in cursive script that reads "Joan Anderson".

Secretary of State

434792

City
Of
Waseca,
Minnesota



Waseca

August 19, 1983

Office of the Secretary of State
180 State Office Building
St. Paul, Minnesota 55155

Regarding Annexation:

I am enclosing an annexation ordinance along with a small map of a recent annexation to the City of Waseca as provided by State Statute.

This is bare land and will be assigned to Waseca Election District 1-A.

If more information is necessary, please advise.

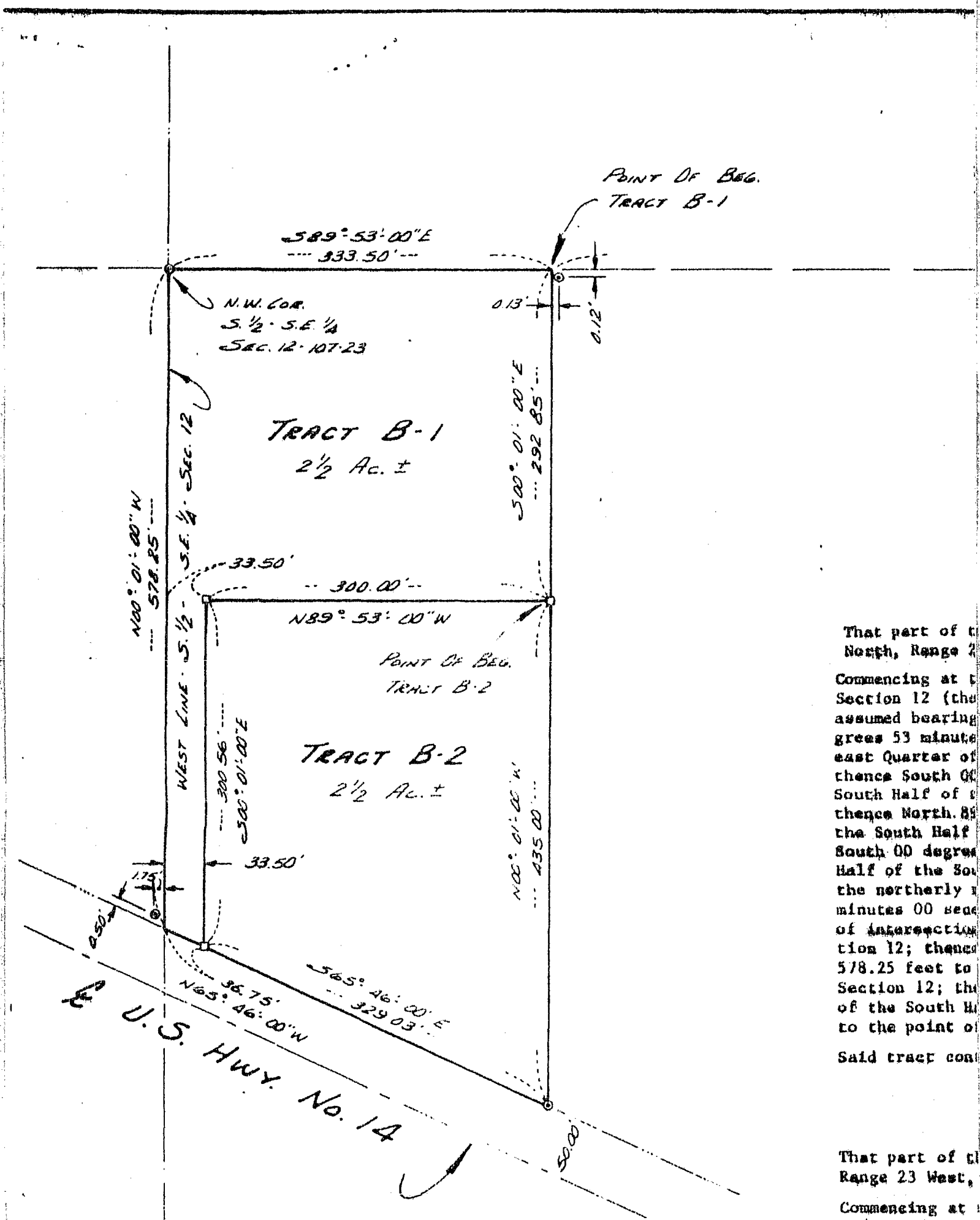
Thank you.

Sincerely,

A handwritten signature in cursive script that reads "Robert Jellum".

Robert Jellum
City Clerk

RJ:bd



That part of the
 North, Range 23
 Commencing at the
 Section 12 (the
 assumed bearing
 grees 53 minute
 east Quarter of
 thence South 00
 South Half of
 thence North. 85
 the South Half
 South 00 degree
 Half of the Sou
 the northerly
 minutes 00 bear
 of intersection
 tion 12; thence
 578.25 feet to
 Section 12; the
 of the South Ha
 to the point of
 Said tract con

That part of the
 Range 23 West,
 Commencing at


**City
Of
Waseca,
Minnesota**



CERTIFICATION

STATE OF MINNESOTA)
CITY OF WASECA) SS

I hereby certify that the attached Ordinance is a true and correct copy of the ordinance presented to and adopted by the City Council of the City of Waseca, Minnesota, at a duly authorized meeting thereof held on the 16th day of August, 1983, as shown by the minutes of said meeting in my possession.


ROBERT JELUM, CITY CLERK
CITY OF WASECA, MINNESOTA

(SEAL)

ORDINANCE NO. 513

AN ORDINANCE ANNEXING CERTAIN LANDS TO THE CITY OF WASECA, MINNESOTA AND ESTABLISHING THE ZONING THEREOF

WHEREAS, at the request of the landowner, certain lands are petitioned for annexation into the City of Waseca, and

WHEREAS, the land hereinafter described is unplatted land situated in St. Mary Township, Waseca County, Minnesota, and is contiguous to the incorporated limits of the City of Waseca, and

WHEREAS St. Mary Township and Waseca County have waived any claim or appeal against said annexation petition, and

WHEREAS, the land hereinafter described is now urban or suburban in character, and

WHEREAS, the Waseca City Council has determined that the annexation of said land to the City of Waseca will be in the best interest of the City of Waseca,

WHEREAS, said lands are in need of orderly annexation,

NOW, THEREFORE, THE CITY OF WASECA DOES ORDAIN:

Sec. 1. That there is hereby annexed to and included within the City of Waseca, Minnesota, the following described land in the County of Waseca, State of Minnesota, as contained in Exhibit "A"

Sec. 2. That the annexed land shall be zoned within the meaning of the zoning ordinances and codes of the City of Waseca as Commercial District.

Sec. 3. That a certified copy of this ordinance shall be filed with the Minnesota Municipal Commission, the Secretary of State of the State of Minnesota, the Waseca County Auditor, the Waseca County Register of Deeds and the Clerk of the St. Mary Township Board.

Sec. 4. That this ordinance shall be effective upon passage and legal publication and the filing of certified copies as directed in Sec. 3.

Passed and adopted by the City Council of Waseca, Minnesota, this 16th day of August, 1983.

Querry Poit Hall
MAYOR

ATTEST: Robert J. Jellum
CITY CLERK

First Reading August 2, 1983
Second Reading August 16, 1983
Published: August 25, 1983
Effective September 5, 1983
(10 days after legal publication)

STATE OF MINNESOTA
DEPARTMENT OF STATE
FILED
SEP 22 1983
John Andrew Shaw
Secretary of State