

An Equal Opportunity Employer

Phone: (612) 296-2428



**STATE OF MINNESOTA
MUNICIPAL BOARD**

Suite 165 Metro Square
7th & Robert Streets
St. Paul, Minnesota 55101

September 6, 1983

Ms. Dorothy Schnell, Clerk
City of Stillwater
216 North Fourth Street
Stillwater, Minnesota 55082

Re: Docket Number A-3868

Ordinance Number 609

City of Stillwater

Dear City Clerk:

The Minnesota Municipal Board has now processed and approved the above ordinance in accordance with Minnesota Statutes, Chapter 414, and the Rules of Procedure.

According to law, this annexation ordinance must be filed with the Township Clerk, County Auditor, Secretary of State and the Municipal Board. (Since the ordinance has already been filed with the Municipal Board, no additional copies are required.) We also recommend that you file the ordinance with the County Recorder.

The annexation is final upon the date the ordinance is approved by the Board, which is the date of this letter.

Sincerely,

MUNICIPAL BOARD

Patricia D. Lundy
Patricia D. Lundy
Assistant Director

PDL:sg

cc: ✓ Secretary of State
County Auditor
Township Clerk
Attorney
Municipality

STATE OF MINNESOTA
DEPARTMENT OF STATE

FILED
SEP 20 1983

Joan Anderson Howe
Secretary of State

#34781

ORDINANCE NO. 609

AN ORDINANCE EXTENDING THE CORPORATE LIMITS OF THE CITY OF STILLWATER TO INCLUDE CERTAIN UNINCORPORATED TERRITORY BORDERED BY LAND WITHIN THE CITY LIMITS AND ABUTTING THEREON.

WHEREAS, certain territory described below is not presently included within the corporate limits of any incorporated city, or borough; and

WHEREAS, 60% or more of the perimeter of this territory is bordered by lands already included within the corporate limits of the city and is deemed to be urban or suburban in character;

NOW THEREFORE, the City Council of the City of Stillwater ordains:

Section 1. Territory Annexed. The corporate limits of the City of Stillwater, Minnesota, are hereby extended to include the unplatted territory described as follows, (60% or more of the perimeter of which territory is bordered by territory already included within the city limits):

That part of the East Half of the Northwest Quarter and that part of the Northeast Quarter of the Southwest Quarter, Section Twenty-nine, Township Thirty North, Range Twenty West, Washington County, Minnesota, described as follows:

That part of the right-of-way of Boutwell Road lying Westerly of the centerline of Boutwell Road and lying Northerly of the right-of-way line of C.S.A.H. 12 and lying Easterly of the Easterly line of the tract described in Book 323 of Deeds, page 922, recorded in the office of the County Recorder, Washington County, Minnesota.

Section 2. Filing. The City Clerk is directed to file certified copies of this ordinance with the Secretary of State, the County Auditor of Washington County, Minnesota and the Town Clerk of Stillwater Township and the Minnesota Municipal Board.

Section 3. Effective Date of Annexation. This ordinance takes effect upon passage and publication and the filing of certified copies as directed in Section 2 and approval by the Minnesota Municipal Board.

Adopted by the City Council of the City of Stillwater, Minnesota, this 21st day of June, 1983.

Harry D. Peterson
Mayor

Attest:
Dorothy R. Schnell
City Clerk

Published in Stillwater Gazette
on June 27th, 1983.

I, Dorothy R. Schnell, City Clerk of the City of Stillwater, Minnesota do hereby certify that the foregoing is a true and correct copy of an ordinance adopted by the Stillwater City Council on June 21, 1983.

Dorothy R. Schnell
City Clerk

STATE OF MINNESOTA
DEPARTMENT OF STATE
FILED
SEP 20 1983
Jean Anderson Howe
Secretary of State

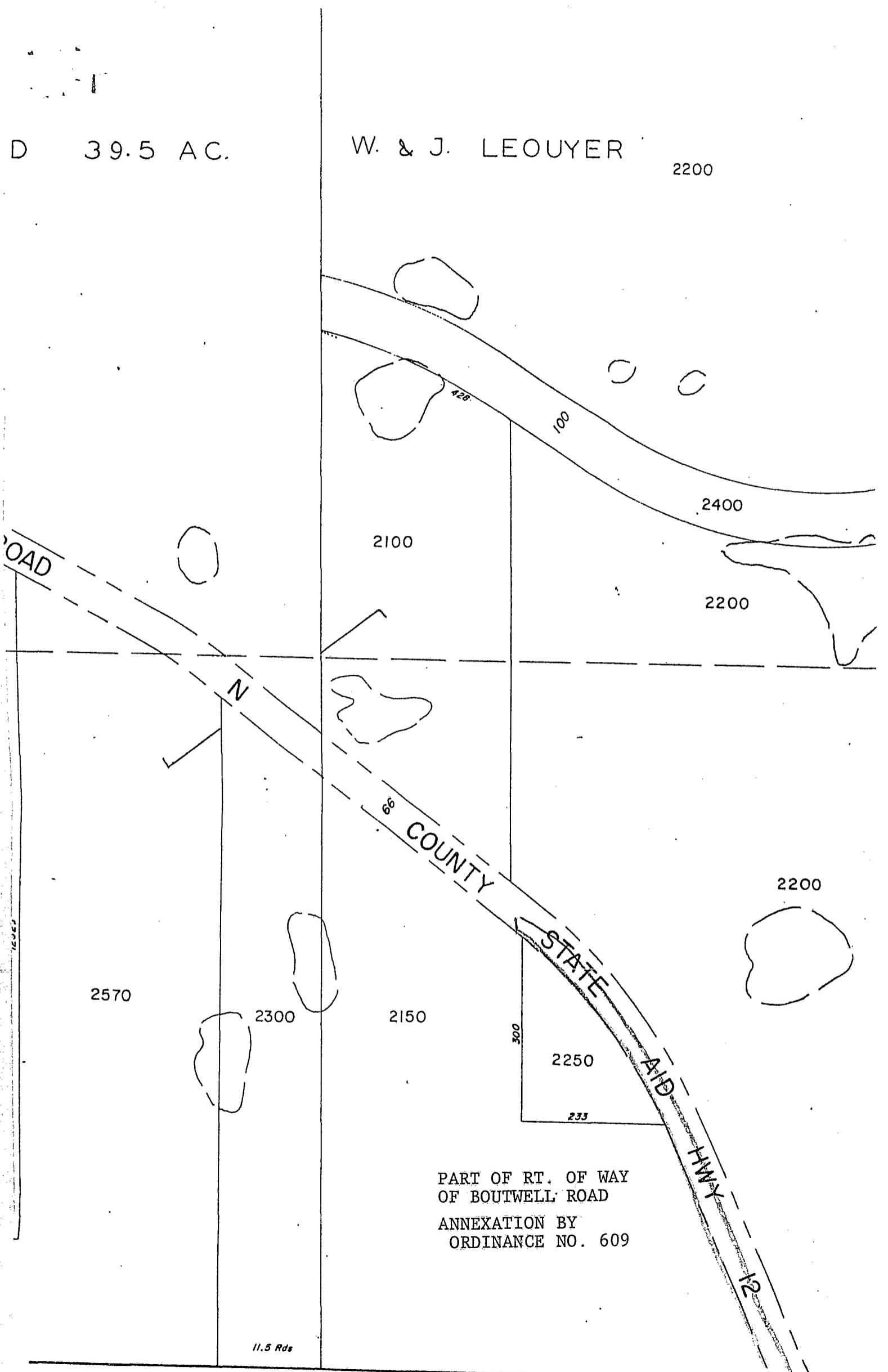
34781

D 39.5 AC.

W. & J. LEOUYER

2200

ROAD



2100

2400

2200

2200

2570

2300

2150

2250

11.5 Rds

PART OF RT. OF WAY
OF BOUTWELL ROAD
ANNEXATION BY
ORDINANCE NO. 609

-----2642.11 Res-----

225

A/