

An Equal Opportunity Employer

Phone: (612) 296-2428



STATE OF MINNESOTA
MUNICIPAL BOARD

Suite 165 Metro Square
7th & Robert Streets
St. Paul, Minnesota 55101

December 16, 1982

Ms. Betty Anderson
Litchfield City Clerk/Treasurer
126 No. Marshall Avenue
Litchfield, Minnesota 55355

Re: Docket No. A-3976 Litchfield

Ordinance No. 462

City of Litchfield

Dear Ms. Anderson:

The Minnesota Municipal Board has now processed and approved the above ordinance in accordance with Minnesota Statutes, Chapter 414, and the Rules of Procedure.

According to law, this annexation ordinance must be filed with the Township Clerk, County Auditor, Secretary of State and the Municipal Board. (Since the ordinance has already been filed with the Municipal Board, no additional copies are required.) We also recommend that you file the ordinance with the County Recorder.

The annexation is final upon the date the ordinance is approved by the Board, which is the date of this letter.

Sincerely,

MUNICIPAL BOARD

Patricia D. Lundy
Patricia D. Lundy
Assistant Director

PDL:sg

cc: ✓ Secretary of State
County Auditor
Township Clerk
Attorney

34285
STATE OF MINNESOTA
DEPARTMENT OF STATE
FILED
DEC 23 1982
James R. Anderson
Secretary of State

612-693-7201

*City of
Litchfield*

126 NO. MARSHALL AVE.

LITCHFIELD, MINNESOTA 55355

VIDA HENDRICKSON, Mayor
RONALD JOHNSON, President
KENNETH AGREN, Councilman
STANLEY HYDEEN, Councilman
PAUL JOHNSON, Councilman
DAVID KELLER, Councilman
DONALD PIETSCH, Councilman
WAYNE CARLSON, Administrator

December 13, 1982

TO: Municipal Board
Litchfield Township

County Auditor
County Recorder
Secretary of State

FROM: Betty Anderson, Clerk-Treasurer
City of Litchfield

RE: Annexation of East Ripley Street
Ordinance #462

The Ordinance by which the City of Litchfield is annexing a portion of East Ripley Street is enclosed. Please file this document as required.

This will be published on December 16, 1982, and effective December 31, 1982 according to the City of Litchfield's Charter and upon approval of the Municipal Board of the State of Minnesota.

Betty Anderson

BA/cl

Enclosure

CITY OF LITCHFIELD

Litchfield

ORDINANCE NO. 462

AN ORDINANCE EXTENDING THE CORPORATE LIMITS
OF THE CITY OF LITCHFIELD TO INCLUDE
CERTAIN UNINCORPORATED PROPERTY
OWNED BY AND ABUTTING UPON THE LIMITS OF THE CITY

WHEREAS, the territory described below is not presently within the corporate limits of any incorporated City; and

WHEREAS, this territory abuts upon the corporate limits of the City at the Litchfield boundaries thereof and is deemed to be urban or suburban in character; and

WHEREAS, this territory is owned in fee by the City;

The City Council of Litchfield ordains:

Section 1. Territory annexed. The corporate limits of the City of Litchfield are hereby extended to include the unplatted property described as follows now owned by the City:

A public street 66.0 feet in width following along a centerline described as follows, to-wit:

Begin at the Northwest corner of the Northeast Quarter (NE $\frac{1}{4}$), Section Thirteen (13), Township One Hundred Nineteen North (119-N), Range Thirty-One West (31-W), thence East along the North line of said Northeast Quarter (NE $\frac{1}{4}$) of said Section Thirteen (13), said line also being the same as the South line of the Southeast Quarter (SE $\frac{1}{4}$) of Section Twelve (12), Township One Hundred Nineteen North (119-N), Range Thirty-One West (31-W), thence continuing East on said line to its intersection with the westerly right-of-way line of County State Aid Highway No. 34, which point of intersection is 100.0 feet West of the Northeast corner of said Section Thirteen (13), Township One Hundred Nineteen North (119-N), Range Thirty-One West (31-W) and there terminating.

Section 2. Filing. The City Clerk is directed to file certified copies of this Ordinance with the Secretary of State, the Meeker County Auditor, the Town Clerk of Litchfield Township, and the Minnesota Municipal Board.

Section 3. Effective date of annexation. This Ordinance takes effect upon its passage and publication and the filing of certified copies as directed in Section 2.

Adopted by the City of Litchfield, Minnesota, December 6, 1982.

Attest:

Betty Anderson
Clerk-Treasurer

Vida Hendrickson
Mayor

1st Reading - November 22, 1982
2nd Reading - December 6, 1982

Published: December 16, 1982

CERTIFICATION

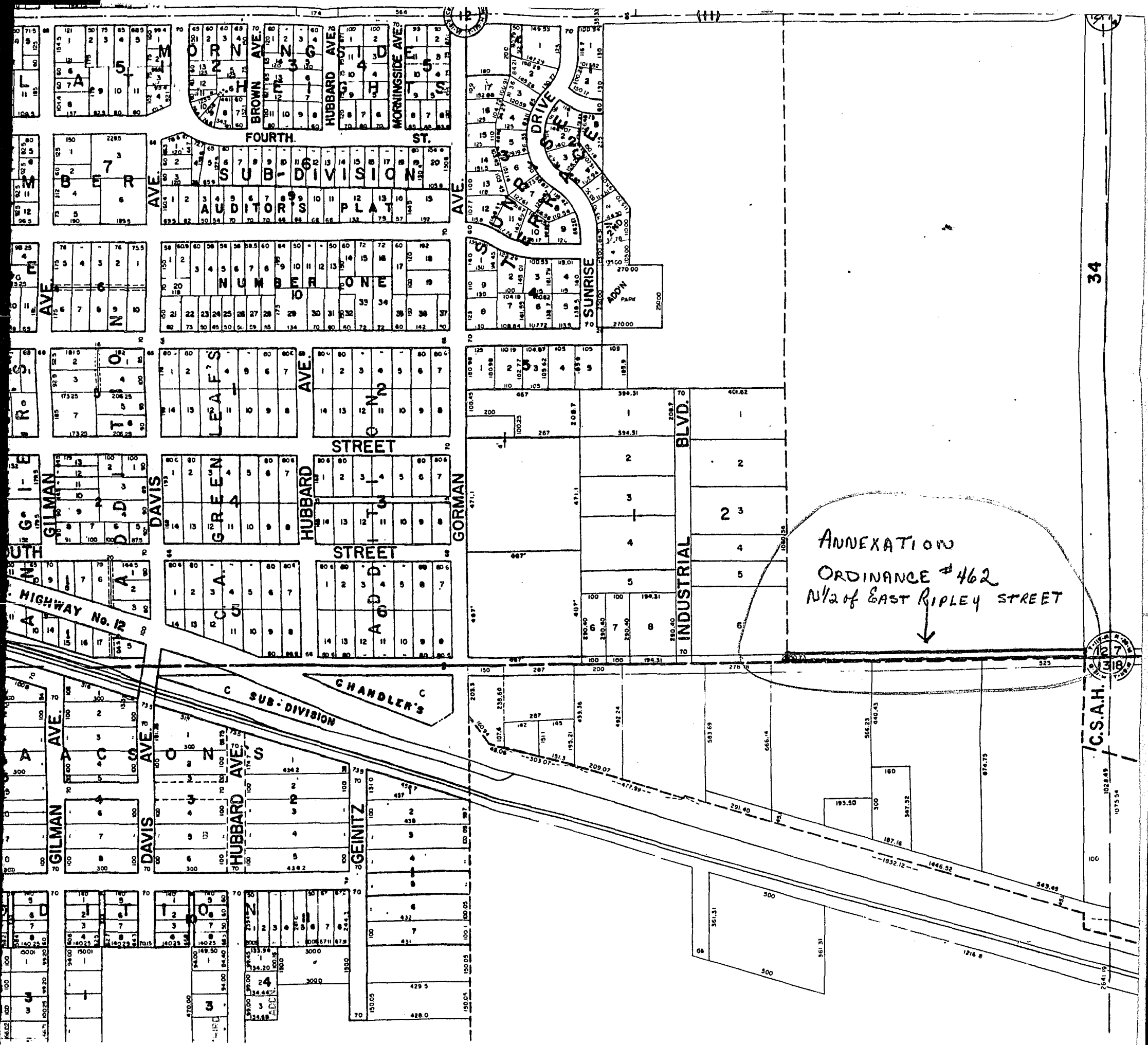
This is to certify that the foregoing is a true and exact copy of the Ordinance #462 as adopted by the City Council on December 6, 1982.

Betty Anderson

Betty Anderson, Clerk-Treasurer

City of Litchfield





ANNEXATION
ORDINANCE #462
N 1/2 of EAST RIPLEY STREET



C.S.A.H.

1075 54
1028 43
100