

An Equal Opportunity Employer

Phone: 296-2428



**STATE OF MINNESOTA
MUNICIPAL BOARD**

Suite 165 Metro Square
7th & Robert Streets
St. Paul, Minnesota 55101

July 30, 1982

Mr. Richard C. Hoglund
City Clerk-Treasurer
City Hall Building
333 SW 6th Street
Willmar, Minnesota 56201

Re: Docket Number A-3942
Willmar

Ordinance Number 787

City of Willmar

Dear City Clerk:

The Minnesota Municipal Board has now processed and approved the above ordinance in accordance with Minnesota Statutes, Chapter 414, and the Rules of Procedure.

According to law, this annexation ordinance must be filed with the Township Clerk, County Auditor, Secretary of State and the Municipal Board. (Since the ordinance has already been filed with the Municipal Board, no additional copies are required.) We also recommend that you file the ordinance with the County Recorder.

The annexation is final upon the date the ordinance is approved by the Board, which is the date of this letter.

Sincerely,

MUNICIPAL BOARD

Patricia D. Lundy
Patricia D. Lundy
Assistant Executive Director

PDL:mem

cc: Secretary of State
County Auditor
Township Clerk
Attorney
Municipality

34102
STATE OF MINNESOTA
DEPARTMENT OF STATE
FILED
AUG 4 1982
Jean Anderson Howe
Secretary of State

(REVISED 1/81)

Willmar

ORDINANCE NO. 787

AN ORDINANCE EXTENDING THE CORPORATE LIMITS OF THE CITY OF WILLMAR, A MUNICIPAL CORPORATION OF THE STATE OF MINNESOTA, TO INCLUDE CERTAIN LANDS OWNED BY THE CITY OF WILLMAR.

WHEREAS, the following described land is owned by the City of Willmar, Minnesota; and

WHEREAS, said property abuts upon the City and is so conditioned as to be properly subject to City Government and since annexation thereof will be in the best interests of the City of Willmar and of the territory to be annexed;

NOW, THEREFORE, BE IT ORDAINED by the City Council of the City of Willmar as follows:

Section 1. Annexation. The following described property is hereby annexed and included within the City of Willmar, Minnesota, as effectually as if it had originally been a part thereof:

That part of the NW $\frac{1}{4}$ of the NE $\frac{1}{4}$ of Section 27, Range 35W, Township 119N, described as follows: Beginning at the NE corner of said NW $\frac{1}{4}$ of the NE $\frac{1}{4}$; thence Southerly 655' south on and along the easterly line of the NW $\frac{1}{4}$ to a point on the north edge on the top of the bank of Lateral 5 of Ditch 23A; thence WNW along the edge of the county ditch to a point which is 414' westerly of the east line of the NW $\frac{1}{4}$; thence Northerly 523' on a line parallel with the east line of the NW $\frac{1}{4}$ to a point on the north line of the NW $\frac{1}{4}$ to the point of beginning with said area to total 5.6 acres.

Section 2. Best Interest of the City of Willmar. That the annexation will be to the best interest of the City of Willmar, Minnesota, and the territory affected.

Section 3. Abuts on City Limits. That the property above-described abuts on city limits and is so conditioned as property to be subject to city government.

STATE OF MINNESOTA
DEPARTMENT OF STATE
FILED
AUG 4 1982

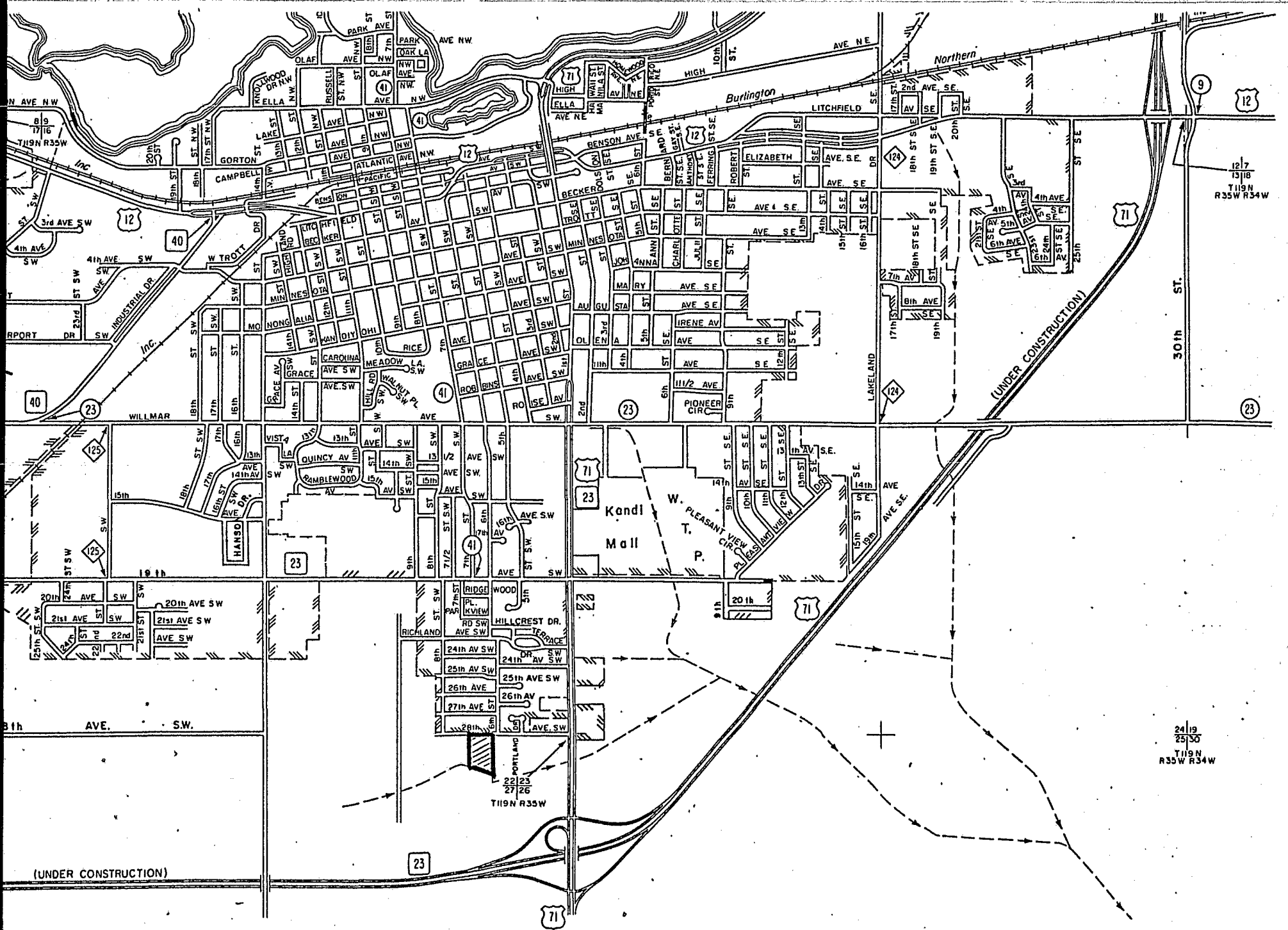
Joan Anderson Howe
Secretary of State

34102

Section 4. Zoning the Above Area. The area above-described shall be zoned P, Park.

Section 5. Effective Date. This Ordinance shall take effect and be in full force from and after the filing of a copy of this Ordinance with the Minnesota Municipal Commission, the Town Clerk of Willmar Township, the County Auditor of Kandiyohi County and the Secretary of State of the State of Minnesota, and from and after its adoption and publication.

This Ordinance was introduced by Councilman: Norsten .
This Ordinance was introduced on: July 7, 1982 .
This Ordinance was published on: July 14, 1982 .
This Ordinance was given a hearing on: July 21, 1982 .
This Ordinance was adopted on: July 21, 1982 .
This Ordinance was published on: July 28, 1982 .



127
15118
T119N
R35W R34W

2419
2550
T119N
R35W R34W

(UNDER CONSTRUCTION)

(UNDER CONSTRUCTION)

Kandl
Mall

W. Pleasant View
P.

71

23

40

23

71

23

71

23

9

41

41

23

124

71

125

23

23

41

71

23

71

124

71

23

23

41

71

23

71

124

71

23

23

41

71

23

71

124

71

23

23

41

71

23

71

124

71

23

23

41

71

23

71

124

71

23

23

41

71

23

71

124

71

23

23

41

71

23

71

124

71

23

23

41

71

23

71

124

71

23

23

41

71

23

71

124

71

23

23

41

71

23

71

124

71

23

23

41

71

23

71

124

71

23

23

41

71

23

71

124

71

23

23

41

71

23

71

124

71

23

23

41

71

23

71

124

71

23

23

41

71

23

71

124

71

23

23

41

71

23

71

124

71

23

23

41

71

23

71

124

71

23

23

41

71

23

71

124

71

23

23

41

71

23

71

124

71

23

23

41

71

23

71

124

71

23

23

41

71

23

71

124

71

23

23

41

71

23

71

124

71

23

23

41

71

23

71

124

71

23

23

41

71

23

71

124

71

23

23

41

71

23

71

124

71

23

23

41

71

23

71

124

71

23

23

41

71

23

71

124

71

23

23

41

71

23

71

124

71

23

23

41

71

23

71

124

71

23

23

41

71

23

71

124

71

23

23

41

71

23

71

124

71

23

23

41

71

23

71

124

71

23

23

41

71

23

71

124

71

23

23

41

71

23

71

124

71

23

23

41

71

23

71

124

71

23

23

41

71

23

71

124

71

23

23

41

71

23

71

124

71

23

23

41

71

23

71

124

71

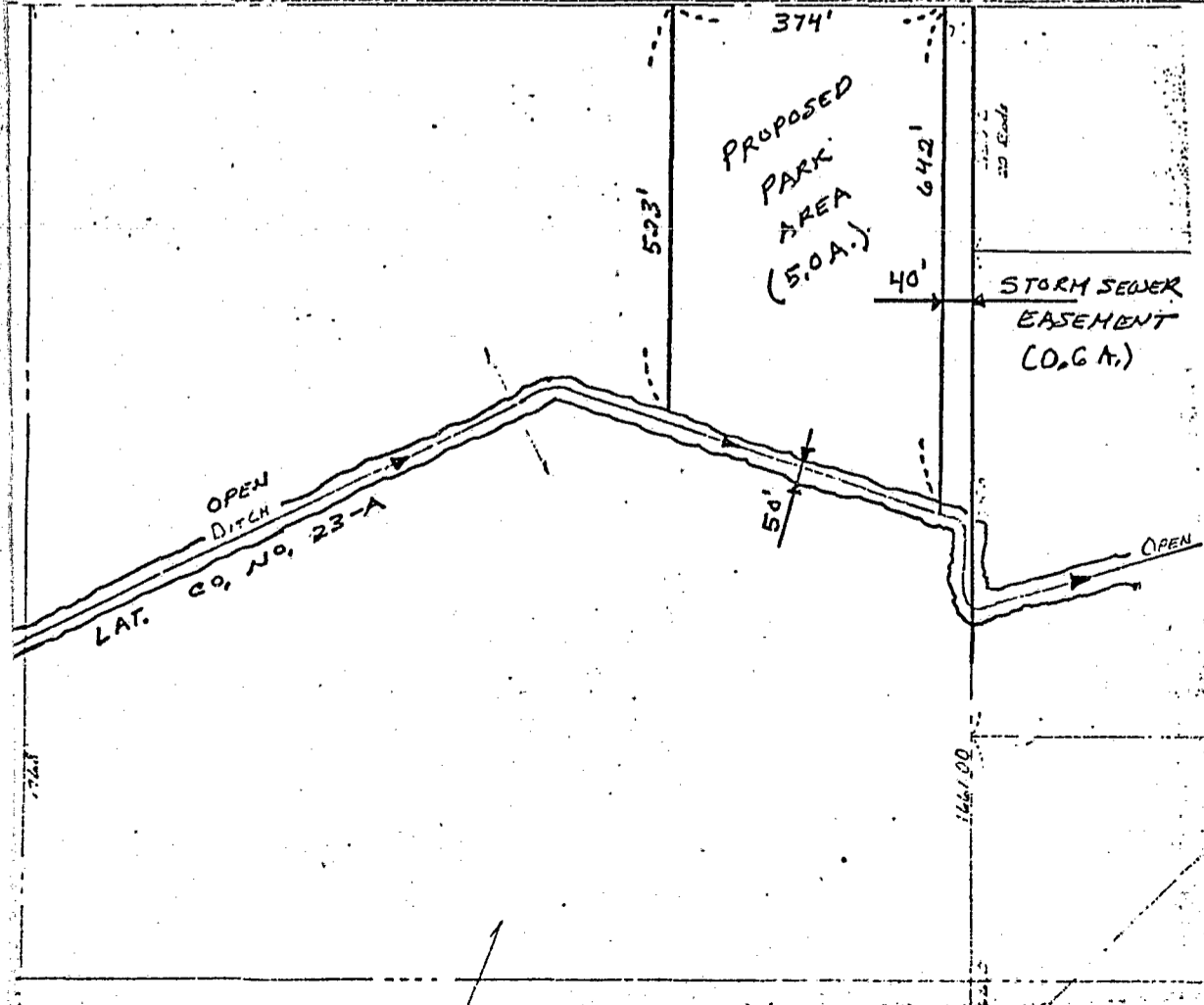
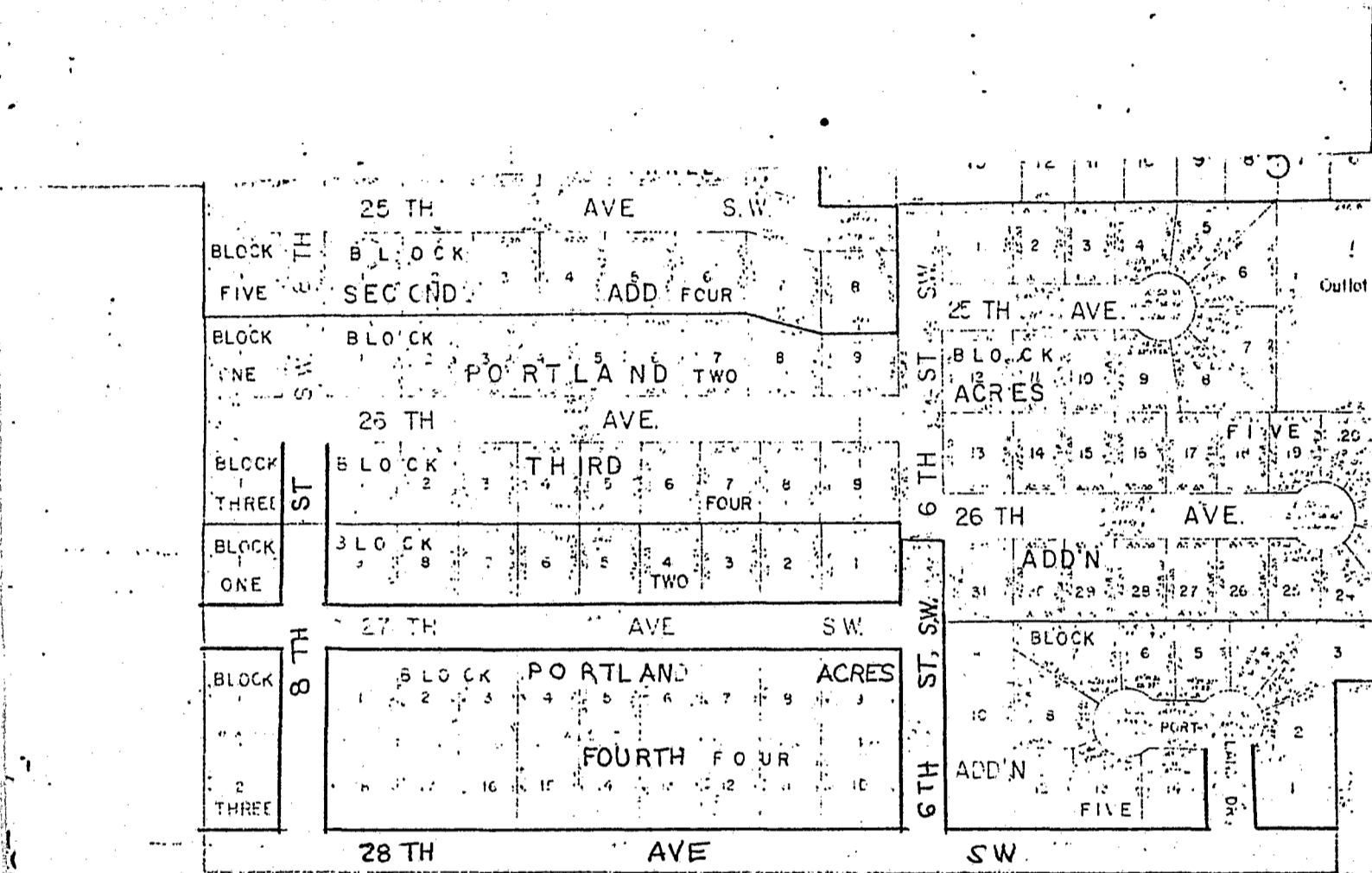
23

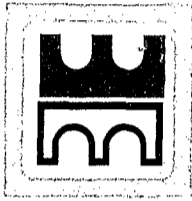
23

41

71

23





City of Willmar

Office of CLERK-TREASURER
Phone 612/235-4913

July 23, 1982

Ms. Joan Anderson Growe
Secretary of State
180 State Office Building
St. Paul, MN 55155

Re: Ordinance No. 787

Dear Ms. Growe:

Enclosed, please find Willmar City Ordinance No. 787 which extends the corporate limits of the City of Willmar. As required by law, this Ordinance must be filed with your office.

Sincerely,

CITY OF WILLMAR

Richard C. Hoglund
City Clerk-Treasurer

RCH:dsb

Enclosure