

An Equal Opportunity Employer

Phone: 296-2428



STATE OF MINNESOTA
MUNICIPAL BOARD

Suite 165 Metro Square
7th & Robert Streets
St. Paul, Minnesota 55101
July 14, 1980

Mr. Edwin V. Tremel
Sleepy Eye City Clerk
City Hall
108 Main Street W.
Sleepy Eye, Minnesota 56085

Re: Docket Number A-3721

Ordinance Number 261

City of Sleepy Eye

Dear City Clerk:

The Minnesota Municipal Board has now processed and approved the above ordinance and filing fee in accordance with Minnesota Statutes, Chapter 414, and the Rules of Procedure.

According to law, this annexation ordinance must be filed with the Township Clerk, County Auditor, Secretary of State and the Municipal Board. (Since the ordinance has already been filed with the Municipal Board, no additional copies are required.)

The annexation is final upon the date the ordinance is approved by the Board, which is the date of this letter.

Sincerely,

MUNICIPAL BOARD

Patricia D. Lundy
Patricia D. Lundy
Assistant Executive Director

PDL:kj

cc: Secretary of State
County Auditor
Township
Attorney
Municipality

(REVISED 7/78)

STATE OF MINNESOTA
DEPARTMENT OF STATE
FILED
JUL 21 1980

John Anderson Howe
Secretary of State
32930

Sleepy Eye

ORDINANCE

Ordinance No. 261

AN ORDINANCE EXTENDING THE CORPORATE LIMITS OF THE CITY OF SLEEPY EYE TO INCLUDE CERTAIN UNINCORPORATED PLATTED AND UNPLATTED LAND ABUTTING UPON THE CITY LIMITS.

The City of Sleepy Eye does Ordain as Follows:

WHEREAS, a certain Petition dated May 19, 1980, requesting annexation of the territory herein described was duly presented to the Council; and

WHEREAS, the quantity of land embraced within the area described in the Petition is 5.86 acres, no part of which is included within the limits of the incorporated city; and

WHEREAS, the Petition was signed by all owners; and

WHEREAS, the Town Board of Home Township in which the land is located has waived any objections to said annexation; and

WHEREAS, the land described in the Petition abuts upon the City Limits at the Southerly boundary thereof:

The City of Sleepy Eye does Ordain as follows:

Section 1. The City Council hereby determines that the annexation will be to the best interest of the City and of the territory affected, that the territory described herein abuts upon the City limits and is urban or suburban in character, and that none of said territory is now included within the limits of any city and does not abut upon the limits of any other city.

Section 2. The corporate limits of the city are hereby extended to include the platted and unplatted land described as follows, and the same is hereby annexed to and included within the city as effectually as if it had originally been a part thereof:

A tract of land in the SE $\frac{1}{4}$ of Section 31, Township 110 North Range 32 West of the Fifth Principal Meridian, Brown County, Minnesota.

Beginning at the Northwest Corner of Block 2, Haala and Lambrecht Addition in the City of Sleepy Eye, Brown County, Minnesota; thence South 00 degrees 00 minutes 00 seconds West along the West line of said Block 2 a distance of 360.00 feet; thence South 89 degrees 37 minutes 12 seconds West a distance of 708.75 feet to the Southerly prolongation of the West line of Seventh Avenue S. W. in said City; thence North 00 degrees 00 minutes 12 seconds East along said prolongation a distance of 360.00 feet to the South line of Brackenridge Street S. W. in said City, said South line also being the North line of said Section 31; thence North 89 degrees 37 minutes 12 seconds East along said South line a distance of 708.73 feet to the point of beginning containing 5.86 acres, more or less

Section 3. The City Clerk is hereby directed to file certified copies of this Ordinance with the Minnesota Municipal Commission, Secretary of State, the Home Township Clerk and the County Auditor.

Section 4. This Ordinance takes effect upon its passage and publication and the filing of the certified copies as directed in Section 3.

July 1, 1980

by *John Rydin*
John Rydin, Mayor

STATE OF MINNESOTA
DEPARTMENT OF STATE
FILED
JUL 21 1980
Joan Anderson Howe
Secretary of State

I do hereby certify and attest that the City Council of the City of Sleepy Eye, Minnesota, did pass the foregoing Ordinance on July 1, 1980, in accordance with the Charter Provisions and State Laws provided therefore.

Edwin V. Treml
Edwin V. Treml, City Clerk

Published in the Sleepy Eye Herald Dispatch, Sleepy Eye, Minnesota on July 10, 1980.



ISH-TAH-NA-BA
Chief Sleepy Eye

City of Sleepy Eye

108 Main Street West
SLEEPY EYE, MINNESOTA 56085
Telephone (507) 794-3731

July 17, 1980

JOHN E. RYDIN
Mayor

EDWIN V. TREML
City Clerk

ERROL E. HAUSER
City Attorney

EDWARD J. SCHOTZKO
Councilman 2nd Ward
Council President

HAROLD WINDSCHITL
Councilman at Large

FRED KRUEGER
Councilman 1st Ward

EARLE W. STEVERMER
Councilman 1st Ward

GERALD A. WEISS
Councilman 2nd Ward

Joan Anderson Growe
Sec. of State
180 State Office Building
St. Paul, Mn. 55155

RE: Filing Ordinance No. 261
Docket # A-3721

Madam:

Please find enclosed one (1) copy each of the Ordinance No. 261 of the City of Sleepy Eye relative to annexation of property into the Corporate Limits of the City.
Please consider this filed in all respects to State Law.

Yours truly,

Edwin V. Tremel
City Clerk

Enclosure

An Equal Opportunity Employer

Phone: 296-2428



STATE OF MINNESOTA
MUNICIPAL BOARD

Suite 165 Metro Square
7th & Robert Streets
St. Paul, Minnesota 55101

July 14, 1980

Mr. Robert F. Morgan
City Administrator
2451 Broadway
Slayton, Minnesota 56172

Re: Docket Number A-3714

Ordinance Number 173

City of Slayton

Dear City Clerk:

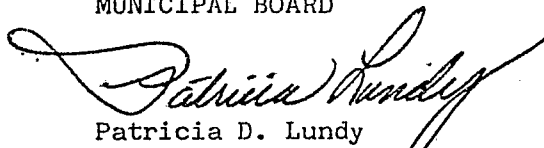
The Minnesota Municipal Board has now processed and approved the above ordinance and filing fee in accordance with Minnesota Statutes, Chapter 414, and the Rules of Procedure.

According to law, this annexation ordinance must be filed with the Township Clerk, County Auditor, Secretary of State and the Municipal Board. (Since the ordinance has already been filed with the Municipal Board, no additional copies are required.)

The annexation is final upon the date the ordinance is approved by the Board, which is the date of this letter.

Sincerely,

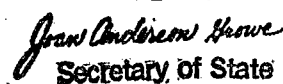
MUNICIPAL BOARD


Patricia D. Lundy
Assistant Executive Director

PDL:kj

cc: Secretary of State
County Auditor
Township
Attorney
Municipality

STATE OF MINNESOTA
DEPARTMENT OF STATE
FILED
JUL 21 1980


Secretary of State

(REVISED 7/78)

32929

STATE OF MINNESOTA
COUNTY OF MURRAY
CITY OF SLAYTON

Slayton

ORDINANCE NO. 173

AN ORDINANCE EXTENDING THE CORPORATE LIMITS OF THE CITY OF SLAYTON TO INCLUDE CERTAIN UNINCORPORATED PLATTED LAND NOT EXCEEDING 200 ACRES IN AREA ABUTTING UPON THE CITY LIMITS.

WHEREAS, a certain petition dated 29 February 1980, requesting annexation of the territory hereinafter described was duly presented to the council on the 19th day of May, 1980, and

WHEREAS, the quantity of land embraced within the area described in the petition and bounded as described is 2.29 acres more or less of platted land, no part of which is included within the limits of an incorporated city or borough; and

WHEREAS, the petition was signed by the sole owner; and

WHEREAS, no objections to the annexation have been received from the town board, or the governing body of any municipality whose boundaries abut upon the boundaries of the land to be annexed; and

WHEREAS, the land described in the petition abuts upon the city limits at the southern boundary thereof;

NOW THEREFORE, THE COUNCIL OF THE CITY OF SLAYTON, MINNESOTA, DOES ORDAIN:

Section 1. The city council hereby determines (1) that the annexation will be to the best interests of the city and of the territory affected; (2) that the territory described herein abuts upon the city limits and is about to become urban or suburban in character; and (3) that none of said territory is now included within the limits of any city or borough.

Section 2. Territory Annexed. The corporate limits of the city are hereby extended to include the platted land described as follows and the same is hereby annexed to and included within the city as effectually as if it had originally been a part thereof:

Block 1, Lot 1 Murray Industries Second Addition, Slayton Township, Murray County, Minnesota.

Said parcel contains 2.29 acres more or less, and is subject to existing easements of record.

Section 3. Zoning District. The land hereby annexed to and included within the city is hereby designated as an Industrial District I-1.

Section 4. Filing. The city clerk is hereby directed to file certified copies of this ordinance with the Minnesota Municipal Board, the Secretary of State, the Town Clerk, and the County Auditor.

Section 5. Effective Date. This ordinance takes effect upon its passage and publication and the filing of the certified copies as directed in Section 3.

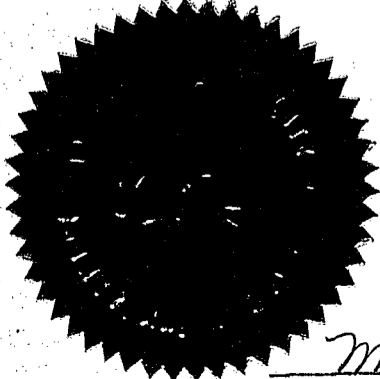
Adopted by the council this 19th day of May, 1980.

THE CITY OF SLAYTON

STATE OF MINNESOTA
DEPARTMENT OF STATE
FILED
JUL 21 1980
Joan Anderson
Secretary of State

Wallace Johlfs
WALLACE JOHLFS

MAYOR

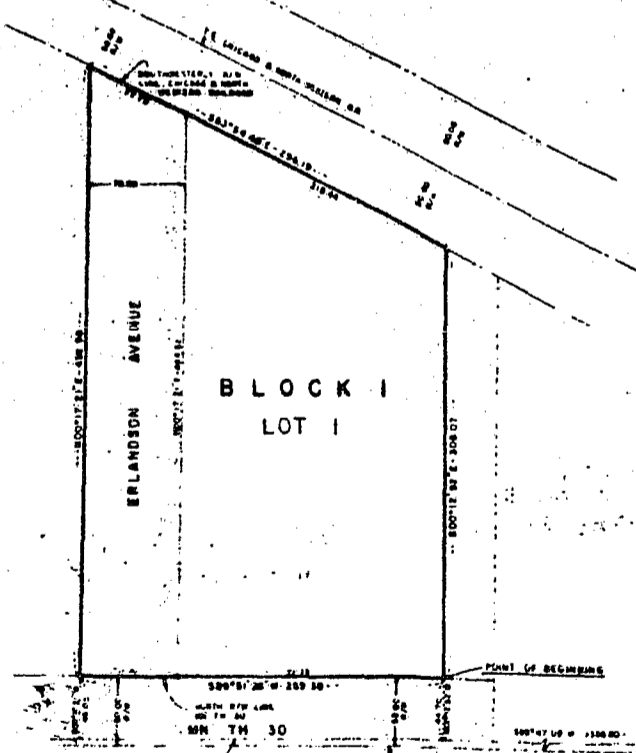


Margaret Staples
MARGARET STAPLES
CITY CLERK

BLOCK 2
7

ERLANDSON AVENUE

MURRAY INDUSTRIES ADDITION
BLOCK 1



BLOCK 1
LOT 1

MADE 1/16/54
ALL DIMENSIONS
IN FEET
AND DECIMALS THEREOF
SHOWN ON THIS PLAT
WERE OBTAINED BY
MEASUREMENTS MADE
ON THE GROUND
BY THE SURVEYOR
ON THE DATE ABOVE
STATED AND BY THE
METHODS AND EQUIPMENT
USUALLY EMPLOYED
BY A SURVEYOR
IN THE PRACTICE
OF HIS PROFESSION
AND THE SAME ARE
TRUE AND CORRECT
TO THE BEST OF HIS
KNOWLEDGE AND
BELIEF AND TO THE
BEST OF HIS ABILITY
AND ACCORDING TO
THE BEST PRACTICES
AND METHODS
USUALLY EMPLOYED
BY A SURVEYOR
IN THE PRACTICE
OF HIS PROFESSION
AND THE SAME ARE
TRUE AND CORRECT
TO THE BEST OF HIS
KNOWLEDGE AND
BELIEF AND TO THE
BEST OF HIS ABILITY
AND ACCORDING TO
THE BEST PRACTICES
AND METHODS
USUALLY EMPLOYED
BY A SURVEYOR
IN THE PRACTICE
OF HIS PROFESSION

MURRAY INDUSTRIES SECOND ADDITION, MURRAY COUNTY, MINNESOTA

KNOW ALL MEN BY THESE PRESENTS, That Murray Industries Inc., a corporation under the laws of the State of Minnesota, is the owner and proprietor of a parcel of land located in Lot 2 of the Southeast quarter of the Southeast quarter of Section 9, Township 106 North, Range 41 West, Slayton Township, Murray County, Minnesota, being more particularly described as follows:

Commencing at the southeast corner of said section; thence South 77 degrees 47 minutes 00 seconds West, 600.00 feet; thence along the south line of said section, a distance of 1574.00 feet; thence North 00 degrees 12 minutes 42 seconds West, a distance of 70 feet to the north right-of-way line of Minnesota State Highway No. 1, said point being the point of beginning of this description; thence South 88 degrees 51 minutes 26 seconds West, along said right-of-way line, a distance of 700.00 feet; thence North 00 degrees 17 minutes 21 seconds East, a distance of 17.20 feet to the westerly right-of-way line of the Chicago and North Western Railroad; thence South 67 degrees 54 minutes 45 seconds East, along said railroad right-of-way line, a distance of 236.19 feet; thence South 00 degrees 14 minutes 52 seconds East, a distance of 308.00 feet to the Point of Beginning.

Has caused the same to be surveyed and plotted as Murray Industries Sec. No. 2, Murray County, Minnesota, and has hereby donated and dedicated to the public for public use forever the avenue as shown on the plat.

In witness whereof said Murray Industries Inc. has caused these presents to be signed by its proper officers and its corporate seal to be hereunto affixed this _____ day of _____, 19____.

Palmer Hoffland, President

Kenneth Enkon, Secretary

STATE OF MINNESOTA
COUNTY OF MURRAY

The foregoing instrument was acknowledged before me this _____ day of _____, 19____, by Palmer Hoffland, President, and Kenneth Enkon, Secretary, acting on behalf of said Murray Industries Inc.

NOTARIAL PUBLIC

Notary Public, Murray County, Minnesota
My commission expires _____

I hereby certify that I have surveyed and plotted the plat described on this plat as Murray Industries Second Addition, Murray County, Minnesota, and that this plat is a correct representation of all monuments have been correctly placed on the plat in feet and subdivisions of a foot. The boundary lines are correctly designated on the plat, and that there are no other lands or public highways to be designated on the plat other than as shown thereon.

STATE OF MINNESOTA
COUNTY OF MURRAY

Carl H. Martin, Land Surveyor
Minnesota Registration Number 12416

The foregoing instrument was acknowledged before me this _____ day of _____, 19____, A.D. by Carl H. Martin, Land Surveyor.

Notary Public, Murray County, Minnesota
My commission expires _____

OFFICE OF THE COUNTY AUDITOR

County Auditor

I hereby certify that after careful examination of the records, I find no delinquent taxes against the real estate herein described, dated this _____ day of _____, 19____.

OFFICE OF THE COUNTY CLERK

County Recorder

I hereby certify that this instrument was filed for record this _____ day of _____, 19____, at _____ o'clock _____ M., and recorded in Book _____ of Vols., page _____, Microfilm Document Number _____.

CITY TOWN
This plat of MURRAY INDUSTRIES SECOND ADDITION, MURRAY COUNTY, MINNESOTA, was approved and accepted by the City Council of Slayton, Minnesota at a regular meeting thereof held this _____ day of _____, 19____.

Mayor
City Clerk
BOARD OF COUNTY COMMISSIONERS
MURRAY COUNTY, MINNESOTA
This plat of MURRAY INDUSTRIES SECOND ADDITION, MURRAY COUNTY, MINNESOTA, was approved and accepted by the Board of County Commissioners, Murray County, Minnesota at a regular meeting thereof held this _____ day of _____, 19____.

COUNTY PLANNING COMMISSION
MURRAY COUNTY, MINNESOTA
This plat of MURRAY INDUSTRIES SECOND ADDITION, MURRAY COUNTY, MINNESOTA, was approved and accepted by the County Planning Commission, Murray County, Minnesota at a regular meeting thereof held this _____ day of _____, 19____.

1954
MARTIN LAND SURVEYING
WORTHINGTON, MN.