

An Equal Opportunity Employer

Phone: 296-2428



STATE OF MINNESOTA
MUNICIPAL BOARD

Suite 165 Metro Square
7th & Robert Streets
St. Paul, Minnesota 55101

April 16, 1980

Mr. William Radio
City Manager
City Hall
1411 Pacific Avenue
Benson, Minnesota 56215

Re: Docket Number A-3686

Ordinance Number 116

City of Benson

Dear City Clerk:

The Minnesota Municipal Board has now processed and approved the above ordinance and filing fee in accordance with Minnesota Statutes, Chapter 414, and the Rules of Procedure.

According to law, this annexation ordinance must be filed with the Township Clerk, County Auditor, Secretary of State and the Municipal Board. (Since the ordinance has already been filed with the Municipal Board, no additional copies are required.)

The annexation is final upon the date the ordinance is approved by the Board, which is the date of this letter.

Sincerely,

MUNICIPAL BOARD

A handwritten signature in cursive script, appearing to read "Patricia D. Lundy".

Patricia D. Lundy
Assistant Executive Director

PDL:kj

cc: Secretary of State
County Auditor
Township
Attorney
Municipality

STATE OF MINNESOTA
DEPARTMENT OF STATE
FILED
APR 23 1980

Jean Anderson Howe
Secretary of State

(REVISED 7/78)

#32792
O.D.

Renumbered #116.

ORDINANCE NO. 150

AN ORDINANCE EXTENDING THE CORPORATE LIMITS OF THE CITY OF BENSON TO INCLUDE CERTAIN UNINCORPORATED TERRITORY COMPLETELY SURROUNDED BY LANDS WITHIN THE CITY LIMITS AND ABUTTING THEREON.

WHEREAS, certain territory described below is not presently included within the corporate limits of any incorporate city, village, or borough; and

WHEREAS, this territory is completely surrounded on all sides by lands already included within the corporate limits of the city and is deemed to be urban in character;

The City of Benson does ordain:

Section 1. Territory Annexed. The corporate limits of the City of Benson, Minnesota, are hereby extended to include the unincorporated territory described as follows, which territory now is and has heretofore been completely surrounded by territory already included within the city limits:

Beginning at the North (N) quarter corner of Section One (1), Township One Hundred Twenty-one (121), Range Forty (40); thence in an Easterly direction on the North (N) line of said Section One (1) for a distance of 340.8 feet; thence deflect $51^{\circ}47'$ right in a southeasterly direction for a distance of 1961.1 feet to a point called the point of beginning; thence deflect $90^{\circ}00'$ right in a southwesterly direction for a distance of 195.4 feet; thence deflect $90^{\circ}00'$ left in a southeasterly direction for a distance of 300 feet; thence deflect $90^{\circ}00'$ left in a northeasterly direction for a distance of 766.4 feet to a point on the West (W) right-of-way line of the Great Northern Railway; thence in a northwesterly direction on the West (W) right-of-way line of said railway for a distance of 309 feet more or less; thence deflect left in a southwesterly direction on a line parallel to and 300 feet from the southeast side of this described tract of land, for a distance of 492.9 feet to the point of beginning and containing five acres more or less.

Section 2. Filing. The city clerk is directed to file certified copies of this ordinance with the Secretary of State, the County Auditor of the county in which the property is located, and the Minnesota Municipal Commission.

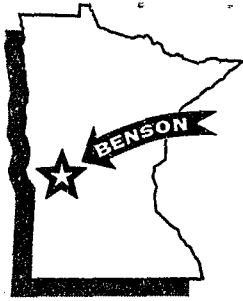
Section 3. Effective Date of Annexation. This ordinance takes effect upon its passage and 30 days after publication and the filing of certified copies as directed in section 2.

Adopted by the city council this 26th day of October, 1966.

Richard E. Haupt
Mayor

ATTEST:

Kenneth R. ...
City Clerk



City of Benson
City Office
Benson, Minnesota 56215
PHONE 612-843-4775

September 21, 1979

Secretary of State
180 State Office Building
St. Paul, MN 55155

Re: Annexation Ordinance #115 & #116
Benson, Minnesota 56215

Dear Sir:

The State Demographer's Office informs me that the two above numbered Ordinances for Annexation have not been filed.

Please accept a copy of Ordinance 155, renumbered 115, containing .94 acres; and Ordinance 156, renumbered 116, containing 5 acres, for filing, and bill the necessary fees to the City of Benson.

Sincerely,

William M. Radio
City Manager

WMR:psc

Enclosure

cc: Minnesota Municipal Board

AFFIDAVIT OF PUBLICATION

State of Minnesota, } ss.
County of Swift
Ronald S. Anfinson

being duly sworn on oath says; that he now is, and during all the times herein stated has been

the publisher or printer of the newspaper known as the Swift County Monitor and has full knowledge of the facts herein stated.

That for more than one year immediately prior to the publication therein of the printed notice

hereto attached said newspaper was printed and published in the English language from its known office of publication within the City of Benson in the County of Swift, State of Minnesota on Thursday of each week in column and sheet form equivalent in space to 450 running inches of single column two inches wide; has been issued from a known office established in said place of publication equipped with skilled workmen and the necessary material for preparing and printing

the same;

has had in its makeup not less than twenty-five per cent of its news columns devoted to local news of interest to said community its purports to serve, the press work of which has been done in its said known office of publications; has contained general news, comment and miscellany; has not duplicated any other publication; has not been entirely made up of patents, plate matter and advertisements; has been circulated at and near its said place of publication to the extent of 240 copies regularly delivered to paying subscribers; has been entered as second class mail matter in the local post office of its said place of publication; that there has been on file in the office of the County Auditor of said county the affidavit of a person having first hand knowledge of the fact constituting its qualification as a newspaper for publication of legal notices; and that its publishers have complied with all demands of said County Auditor for proofs of its said qualifications.

That the printed notice hereto attached as a part hereof was cut from the columns of said newspaper;

was published therein in the English language once each week for

1 successive weeks; that it was first so published on the 17th

day of November 19 66 and hereafter on

of each week to and including the

day of 19; and that the following is a copy of the lower case alphabet which is acknowledged to have been the size and kind

of type used in the publication of said notice

abcdefghijklmnopqrstuvwxyz

Subscribed and sworn to before me this 18 day of Nov. 1966

Ronald S. Anfinson
Mary Swansonberg

Notary Public, Swift County, Minnesota

My commission expires May 13, 1970

MARY SWANBERG
Notary Public, Swift County, Minn.
My Commission Expires MAY 13, 1970

ORDINANCE NO. 156
AN ORDINANCE EXTENDING THE CORPORATE LIMITS OF THE CITY OF BENSON TO INCLUDE CERTAIN UNINCORPORATED TERRITORY COMPLETELY SURROUNDED BY LAND WITHIN THE CITY LIMITS AND ABUTTING THEREON.

WHEREAS, certain territory described below is not presently included within the corporate limits of any incorporate city, village, or borough; and

WHEREAS, this territory is completely surrounded on all sides by lands already included within the corporate limits of the city and is deemed to be urban in character;

The City of Benson does ordain:
Section 1. Territory Annexed. The corporate limits of the City of Benson, Minnesota, are hereby extended to include the unincorporated territory described as follows, which territory now is and has heretofore been completely surrounded by territory already included within the city limits:

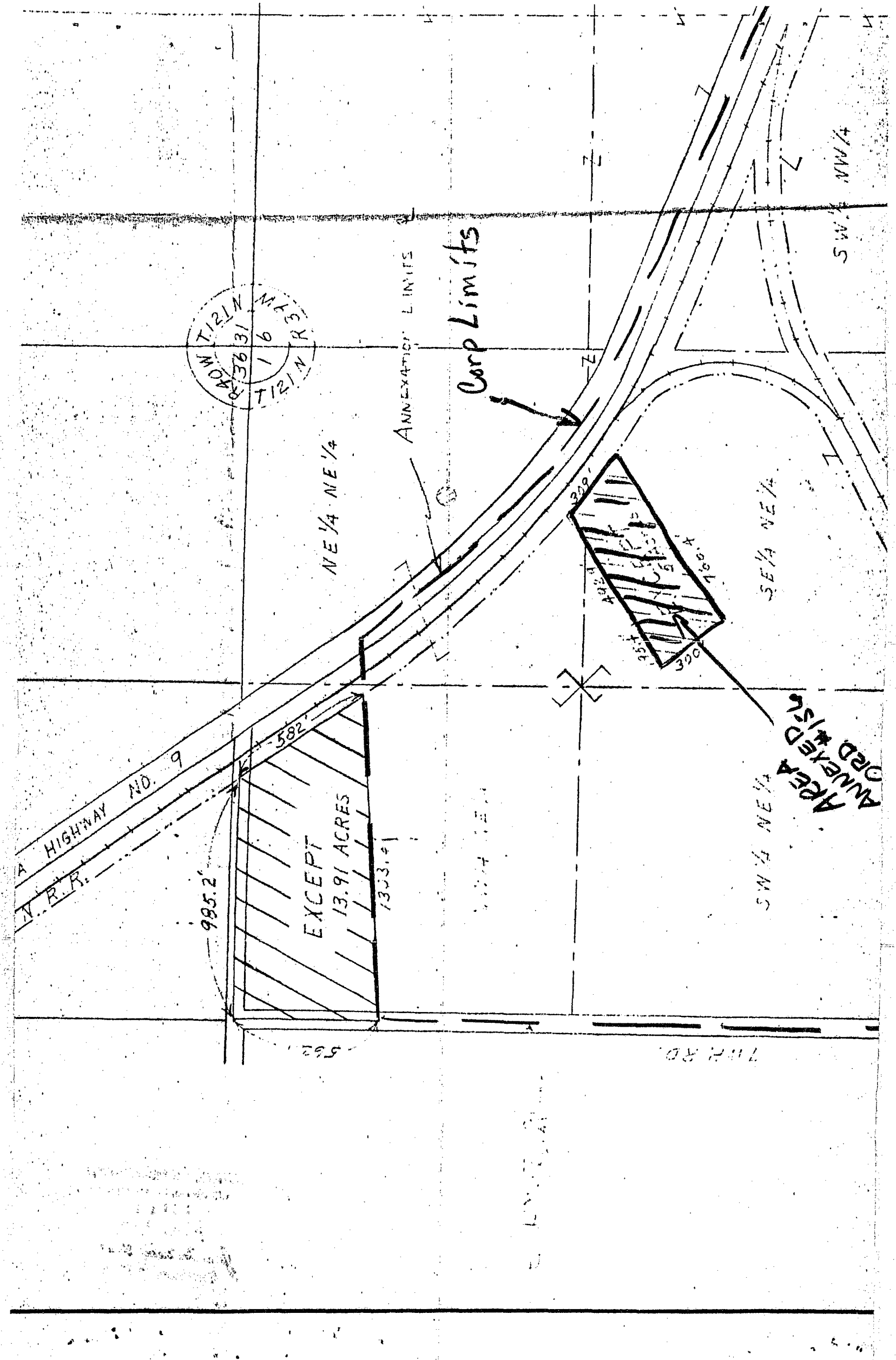
Beginning at the North (N) quarter corner of Section One (1), Township One Hundred Twenty-one (121), Range Forty (40); thence in an Easterly direction on the North (N) line of said Section One (1) for a distance of 340.8 feet; thence deflect 51°47' right in a southeasterly direction for a distance of 1961.1 feet to a point called the point of beginning; thence deflect 90°00' right in a southwesterly direction for a distance of 195.4 feet thence deflect 90°00' left in a southeasterly direction for a distance of 300 feet; thence deflect 90°00' left in a northeasterly direction for a distance of 768.4 feet to a point on the West (W) right-of-way line of the Great Northern Railway; thence in a northwesterly direction on the West (W) right-of-way line of said railway for a distance of 309 feet more or less; thence deflect left in a southwesterly direction on a line parallel to and 300 feet from the southeast side of this described tract of land, for a distance of 492.9 feet to the point of beginning and containing five acres more or less.

Section 2. Filing. The city clerk is directed to file certified copies of this ordinance with the Secretary of State, the County Auditor of the county in which the property is located, and the Minnesota Municipal Commission.

Section 3. Effective Date of Annexation. This ordinance takes effect upon its passage and 30 days after publication and the filing of certified copies as directed in section 2. Adopted by the city council this 26th day of October, 1966.

RICHARD E. HARTZELL, Mayor.

ATTEST:
KENNETH ROSS, City Clerk. 11-17-1c



RAJAN
TIRI
MAY 31 1963
TIRI
R

NE 1/4 NE 1/4

ANNEXATION LIMITS

Corp Limits

SE 1/4 NE 1/4

SW 1/4 NE 1/4

AREA #156

EXCEPT
13.91 ACRES

HIGHWAY NO. 9
N.R.R.

985.2'

582'

1303.4'

7112 RD.

SW 1/4 NW 1/4

