

An Equal Opportunity Employer

Phono: 296-2420



STATE OF MINNESOTA
MUNICIPAL BOARD

Suite 165 Metro Square
7th & Robert Streets
St. Paul, Minnesota 55101

SEP 21 1979
21 1979

Mr. Harold E. Lee
City Clerk-Treasurer
Municipal Building
Pipestone, MN 56164

Re: Docket Number A-3569

Ordinance Number 13, 2nd series

City of Pipestone

Ladies and Gentlemen:

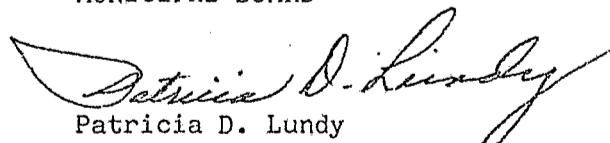
The Minnesota Municipal Board has now processed and approved the above ordinance and filing fee in accordance with Minnesota Statutes, Chapter 414, and the Rules of Procedure.

According to law, this annexation ordinance must be filed with the Township Clerk, County Auditor, Secretary of State and the Municipal Board. (Since the ordinance has already been filed with the Municipal Board, no additional copies are required.)

The annexation is final upon the date the ordinance is approved by the Board, which is the date of this letter.

Sincerely,

MUNICIPAL BOARD


Patricia D. Lundy
Assistant Executive Director

PDL:kj

cc: Secretary of State
County Auditor
Township
Attorney
Municipality

(REVISED 7/78)

STATE OF MINNESOTA
DEPARTMENT OF STATE
FILED
SEP 25 1979


Secretary of State

#32396 O.D.

Pipestone

ORDINANCE NO. 13, 2nd SERIES

AN ORDINANCE EXTENDING AND INCREASING THE CORPORATE LIMITS OF THE CITY OF PIPESTONE, COUNTY OF PIPESTONE, STATE OF MINNESOTA, PURSUANT TO THE PROVISIONS OF MINNESOTA STATUTES 414.033, BY ANNEXING THERETO CERTAIN TRACTS OF LAND CONTIGUOUS TO AND NOT EMBRACED WITHIN THE PRESENT LIMITS OF THE CITY OF PIPESTONE, MINNESOTA

PREAMBLE

WHEREAS, certain portions of State aid streets are contiguous to the corporate limits of the City of Pipestone but not contained therein; and

WHEREAS, the perimeter of the areas are sixty percent or more bordered by the municipality; and

WHEREAS, annexation of these areas would be in the best interests of the City of Pipestone; the City Council of the City of Pipestone ORDAINS AS FOLLOWS:

SECTION I.

The City Council hereby determines that the property legally described as:

1. That part of the West 33 feet of the Northeast Quarter (NE $\frac{1}{4}$) of Section Thirteen (13), Township One Hundred Six (106) North, Range Forty Six (46), Pipestone County, Minnesota, lying southerly of the northerly right-of-way line of Burlington Northern, Inc., and lying northerly of the southerly right-of-way line of trunk highway no. 23; and,
2. The North 33 feet of Lot I and the North 33 feet of Lot E, except the westerly 198.2 feet of said Lot E, all in Stewart's Subdivision, Pipestone County, Minnesota.

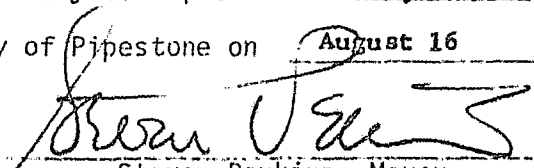
are state aid streets contiguous to the City of Pipestone and not embraced within the City limits, and that therefore the City Council of the City of Pipestone has jurisdiction to annex the above-described territory to the City of Pipestone.

SECTION II.

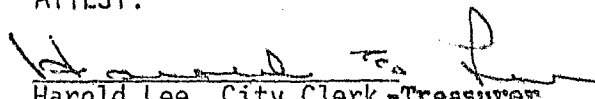
The corporate limits of the City of Pipestone are hereby extended and increased so as to include and embrace within the corporate limits of the City of Pipestone the territory described in Section I hereof, and such territory is hereby annexed and declared to be a part of the City of Pipestone.

Passed by the City Council of the City of Pipestone on ~~August 16, 1979~~

Approved by the Mayor of the City of Pipestone on August 16, 1979.

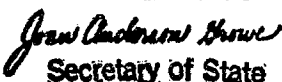

Steven Perkins, Mayor

ATTEST:

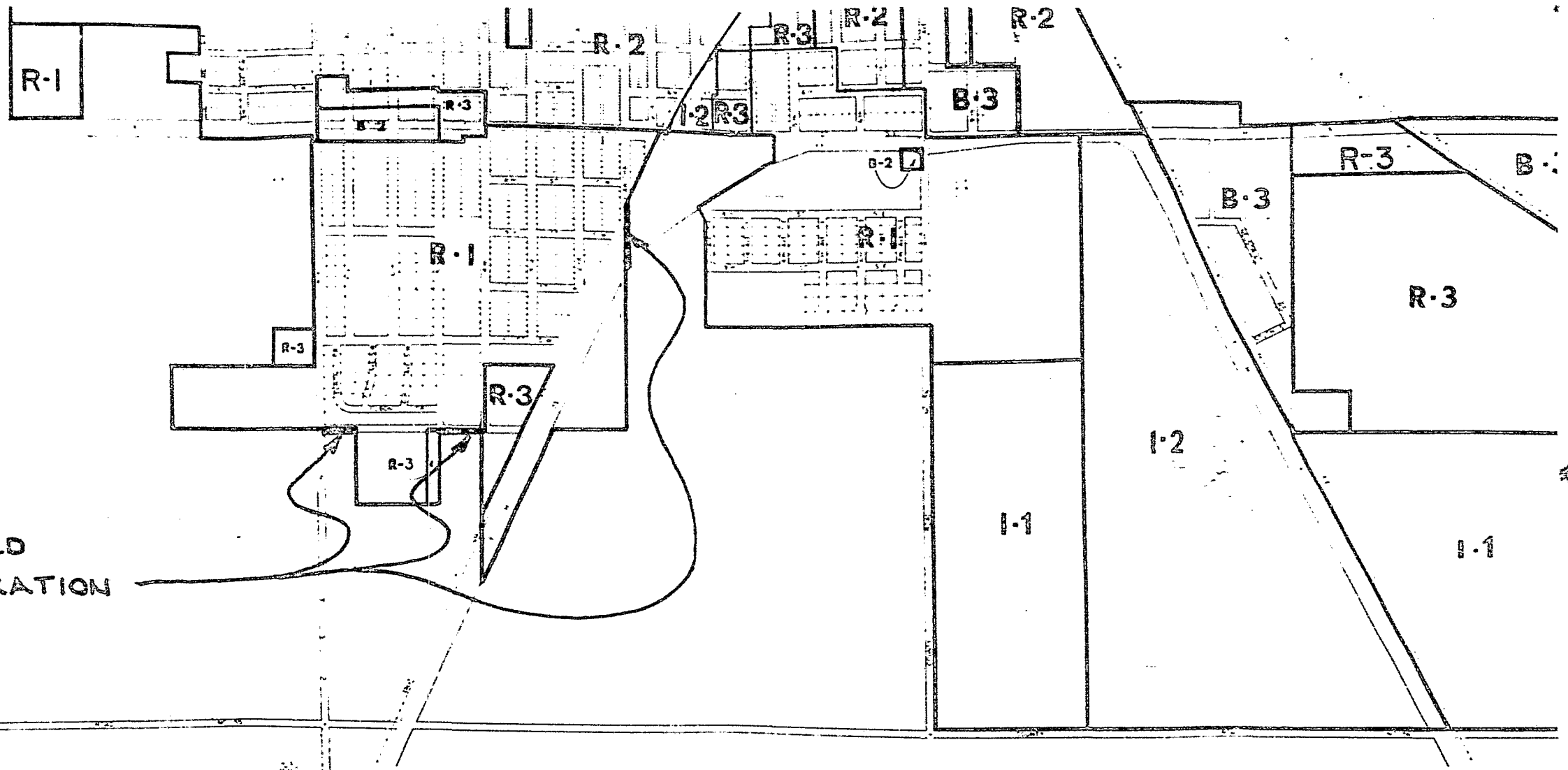

Harold Lee, City Clerk-Treasurer

Published in the Pipestone County Star on August 23, 1979

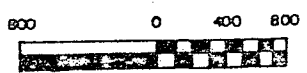
STATE OF MINNESOTA
DEPARTMENT OF STATE
FILED
SEP 25 1979


Secretary of State

#32396
O.D.



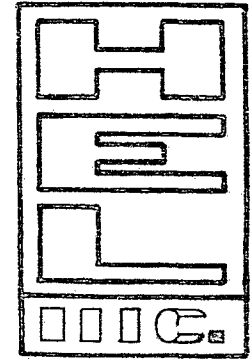
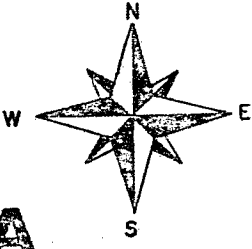
PROPOSED
ANNEXATION



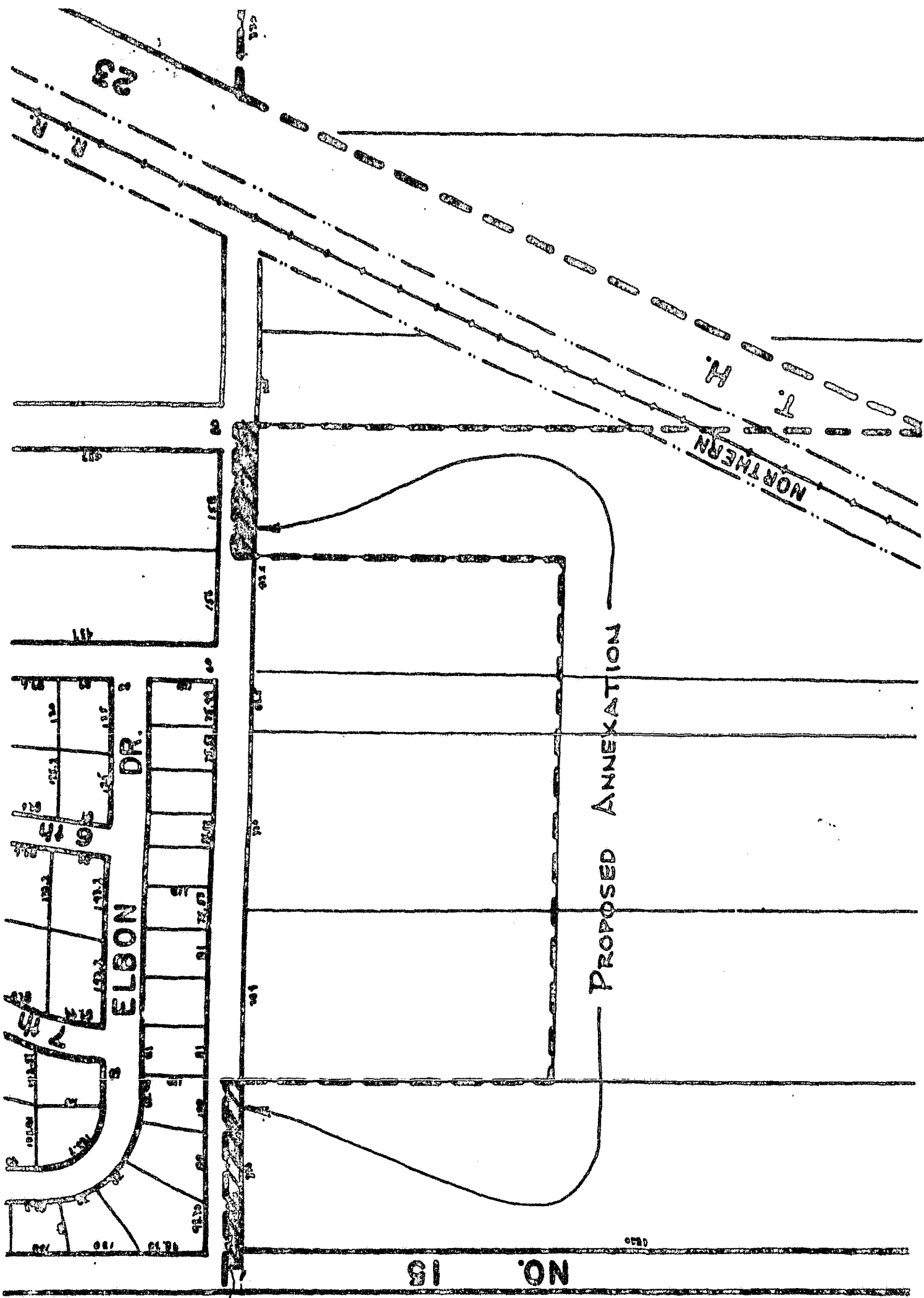
REVISED FEB. 23 1979

ZONING MAP

PIPESTONE, MINNESOTA

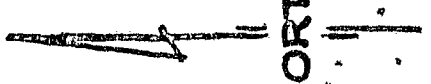


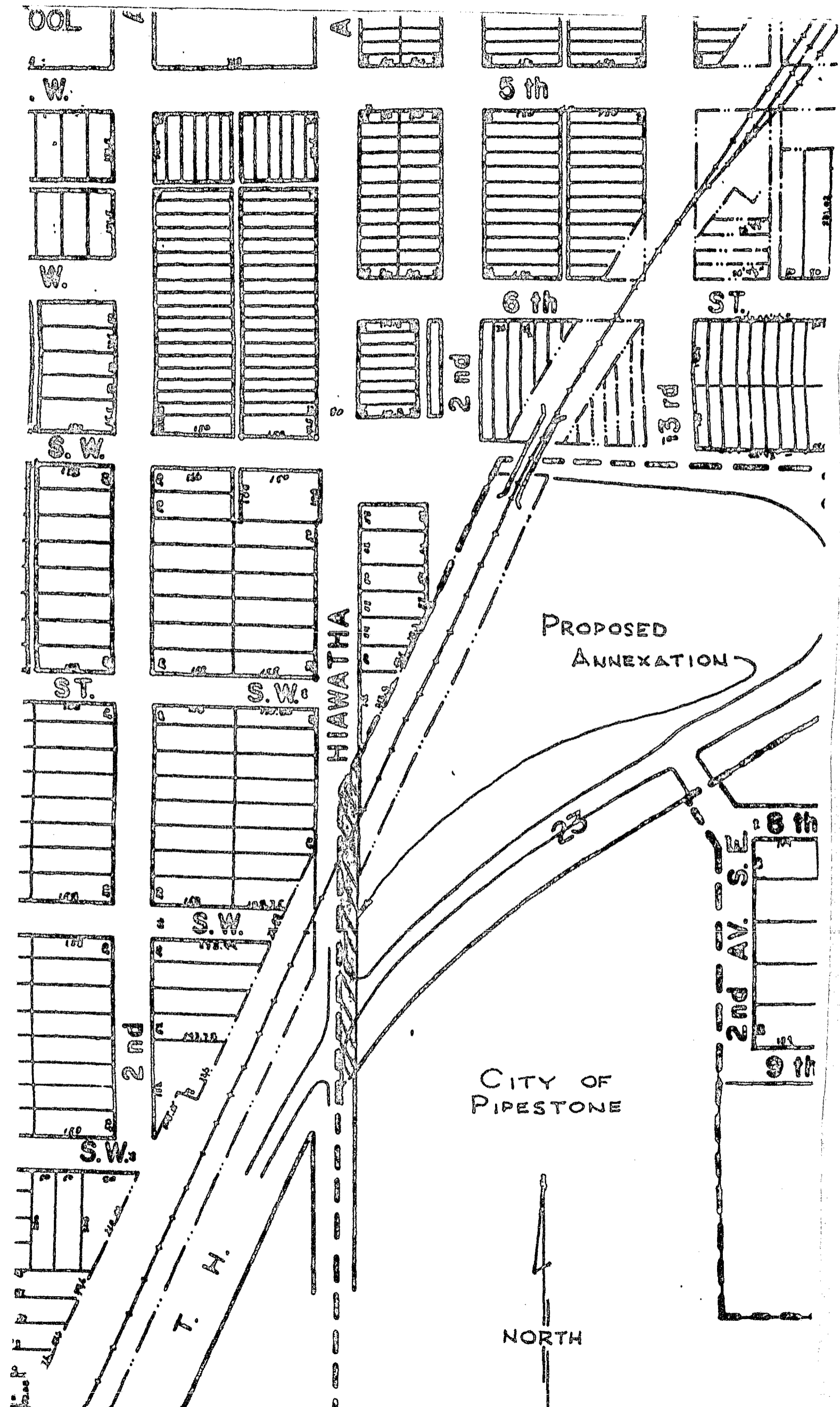
**HAGEMEISTER
EBELING &
LEHN**
ENGINEERS
SURVEYORS



CITY OF
PIPESTONE

NORTH





OOL

W.

W.

S.W.

ST.

S.W.

S.W.

HIAWATHA

2nd

T. H.

2nd

5th

6th

PROPOSED ANNEXATION

23

CITY OF PIPESTONE

NORTH

ST.

3rd

2nd AV. S.E.

8th

9th

SENDER

E-Z LETTER

RECEIVER (ADDRESSEE)

- WRITE LETTER IN SPACE MARKED MESSAGE
- REMOVE YELLOW COPY FOR YOUR FILE
- MAIL OTHER COPIES TO ADDRESSEE

CARL CO., LISBON, OHIO 44432
 FORM E-Z 4 U
 COPYRIGHT 1961

- WRITE YOUR REPLY IN SPACE MARKED REPLY
- KEEP WHITE COPY FOR YOUR FILE
- MAIL PINK COPY TO SENDER



**Secretary of State
 State of Minnesota
 180 State Office Building
 St Paul, Minnesota 55155**

FROM

**Harold E. Lee, City Clerk
 City of Pipestone
 MUNICIPAL BUILDING
 PIPESTONE, MINNESOTA 56164**

DATE August 21/79 SUBJECT Annexation-Portions of Streets
 Docket # A-3569-Ord. 13, 2nd Series

I am hereith enclosing a photocopy of Ordinance #13, 2nd Series-an ordinance annexing portions of state aid streets to the City of Pipestone. These three (3) parcels contain a total of approximately .25 acres. I am also enclosing a sketch map showing the locations of these properties. Copies of this ordinance are also being filed today with the Minnesota Municipal Board, the Pipestone County Auditor, and the Township of Sweet. This is final upon the approval of the Minnesota Municipal Board and correspondence from that of fice, dated 8/13/79, indicated that all requirements had been met and that the ordinance could be adopted & filed.

Thank you for your assistance.

Very truly yours

Harold E. Lee
 SIGNED **Harold E Lee, City Clerk-Treasurer**

DATE OF REPLY _____

SIGNED _____

THIS COPY FOR PERSON ADDRESSED

FOLD

MESSAGE

REPLY