

An Equal Opportunity Employer

Phone: 296-2428



STATE OF MINNESOTA  
MUNICIPAL BOARD

Suite 165 Metro Square  
7th & Robert Streets  
St. Paul, Minnesota 55101

June 12, 1979

Mr. Wayne Lance  
Clerk-Treasurer  
City Administration Building  
1025 Roosevelt Avenue  
Box 647  
Detroit Lakes, MN 56501

Re: Docket Number A-3491

Ordinance Number 370

City of Detroit Lakes

Dear City Clerk/Administrator:

The Minnesota Municipal Board has now processed and approved the above ordinance and filing fee in accordance with Minnesota Statutes, Chapter 414, and the Rules of Procedure.

According to law, this annexation ordinance must be filed with the Township Clerk, County Auditor, Secretary of State and the Municipal Board. (Since the ordinance has already been filed with the Municipal Board, no additional copies are required.)

The annexation is final upon the date the ordinance is approved by the Board, which is the date of this letter.

Sincerely,

MUNICIPAL BOARD

Handwritten signature of Patricia D. Lundy in cursive.

Patricia D. Lundy  
Assistant Executive Director

PDL:kj

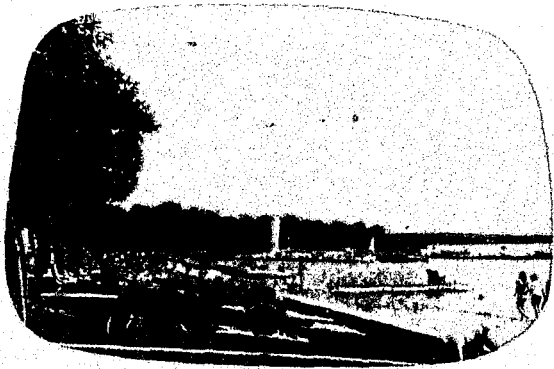
cc: Secretary of State  
County Auditor  
Township  
Attorney  
Municipality

STATE OF MINNESOTA  
DEPARTMENT OF STATE  
FILED  
JUN 13 1979

*Jan Anderson Howe*  
Secretary of State

#32185  
O.N.

(REVISED 7/78)



*Tourists' Paradise!*

# City of Detroit Lakes

MINNESOTA 56501  
P.O. Box 647

OFFICE OF CLERK-TREASURER  
City Administration Building  
1025 Roosevelt Avenue  
Phone (218) 847-5658  
April 26, 1979


The Honorable Joan Anderson Growe  
Secretary of State  
180 State Office Building  
St. Paul, Minnesota 55155

Dear Madam:

Enclosed herewith is a certified copy of Ordinance No. 370 of the City of Detroit Lakes, Minnesota, annexing certain land to the City of Detroit Lakes.

Copies of this Ordinance have been filed with the Minnesota Municipal Board, the Auditor of Becker County, and the Clerk of Detroit Township.

Very truly yours,

  
Wayne Lance  
Clerk-Treasurer

WL:lj  
enc.

Detroit Lakes

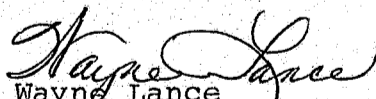
C E R T I F I C A T I O N

State of Minnesota )  
County of Becker )ss  
City of Detroit Lakes)

I, Wayne Lance, duly appointed Clerk-Treasurer of the City of Detroit Lakes, Minnesota, do hereby certify that the attached copy of Ordinance No. 370 of the City of Detroit Lakes, Minnesota, is a true and exact copy of such Ordinance on file and of record in the office of the Clerk-Treasurer of said City.

It is further certified that said Ordinance No. 370 was published in the official newspaper, the Detroit Lakes Tribune, on April 26, 1979.

DATED at Detroit Lakes, Minnesota, this 26th day of April, 1979.

  
Wayne Lance  
Clerk-Treasurer  
Detroit Lakes, Minnesota

ORDINANCE NO. 370

AN ORDINANCE EXTENDING THE CORPORATE LIMITS  
OF THE CITY OF DETROIT LAKES, MINNESOTA  
TO INCLUDE CERTAIN LANDS

THE COUNCIL OF THE CITY OF DETROIT LAKES, MINNESOTA, DOES ORDAIN:

Section 1. A petition has been filed with the governing body of the City of Detroit Lakes, Minnesota, by the owner of the following described real estate, to have such land included within the City of Detroit Lakes, Minnesota:

That part of the Northeast Quarter of the Southwest Quarter and that part of the Northwest Quarter of the Southeast Quarter, all in Section 26, Township 139 North, Range 41 West of the Fifth Principal Meridian in Becker County, Minnesota, described as follows:

Beginning at the Southeast corner of said Northeast Quarter of the Southwest Quarter; thence South 89 degrees 53 minutes 32 seconds West 756.43 feet on an assumed bearing along the South line of said Northeast Quarter of the Southwest Quarter; thence North 00 degrees 55 minutes 39 seconds East 466.28 feet; thence North 00 degrees 41 minutes 13 seconds East 491.67 feet; thence North 00 degrees 01 minutes 39 seconds West 255.41 feet to a point on the Southerly right-of-way line of Trunk Highway No. 34; thence North 89 degrees 58 minutes 21 seconds East 651.06 feet along the Southerly right-of-way line of said Trunk Highway No. 34; thence Easterly on a curve, concave to the South, having a central angle of 02 degrees 24 minutes 39.5 seconds and a radius of 10307.42 feet, for a distance of 433.73 feet (chord bearing South 88 degrees 49 minutes 19 seconds East) along the Southerly right-of-way line of said Trunk Highway No. 34; thence South 00 degrees 17 minutes 42 seconds West 1202.12 feet; thence South 89 degrees 48 minutes 17 seconds West 335.37 feet to the point of beginning. The above described tract contains 30.21 acres.

Section 2. The City Council hereby determines that:


1. The annexation will be in the best interests of the City of Detroit Lakes, Minnesota, and of the territory affected.
2. The territory described herein abuts upon the City of Detroit Lakes and is so conditioned as property to be subjected to the city government.
3. The area to be annexed consists of approximately 30.21 acres.

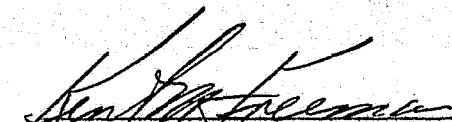
Section 3. Therefore, the Council of the City of Detroit Lakes, Minnesota, hereby ordains and declares that the property hereinbefore described be and the same hereby is annexed to and included in the City of Detroit Lakes, Minnesota, as effectually as if it had originally been a part thereof.

Section 4. This Ordinance shall be final and shall take effect and be in force from and after filing certified copy thereof with the Minnesota Municipal Board, the County Auditor, the Secretary of State, and the Clerk of the Town Board, and from and after its passage and publication.

Passed and adopted this 3rd day of April, 1979.

Approved this 3rd day of April, 1979.

  
Wayne Lance, Clerk-Treasurer

  
Kent M. Freeman, Mayor

First Reading---February 6, 1979  
Second Reading--April 3, 1979

STATE OF MINNESOTA  
DEPARTMENT OF STATE  
FILED  
JUN 13 1979  
Jan Anderson Howe  
Secretary of State

32/85  
J.N.