

An Equal Opportunity Employer

Phone: 296-2428



STATE OF MINNESOTA
MUNICIPAL BOARD

Suite 165 Metro Square
7th & Robert Streets
St. Paul, Minnesota 55101

February 9, 1979

Ms. LaVonne B. Sundlee
Montevideo City Clerk
P.O. Box 311
Montevideo, Minnesota 56265

Re: Docket Number A-3400

Ordinance Number 532

City of Montivedio

Ladies and Gentlemen:

The Minnesota Municipal Board has now processed and approved the above ordinance and filing fee in accordance with Minnesota Statutes, Chapter 414, and the Rules of Procedure.

According to law, this annexation ordinance must be filed with the Township Clerk, County Auditor, Secretary of State and the Municipal Board. (Since the ordinance has already been filed with the Municipal Board, no additional copies are required.)

The annexation is final upon the date the ordinance is approved by the Board, which is the date of this letter.

Sincerely,

MUNICIPAL BOARD

A handwritten signature in cursive script, appearing to read "Pat Lundy".

Patricia D. Lundy
Assistant Executive Director

PDL:kj

cc: Secretary of State
County Auditor
Township
Attorney
Municipality

(REVISED 7/78)

STATE OF MINNESOTA
DEPARTMENT OF STATE
FILED
FEB 13 1979

Jean Anderson Howe
Secretary of State
\$319.80
O.D.

Montevideo

DEC 4 1978

11B

ORD. NO. 532

AN ORDINANCE ANNEXING CERTAIN LAND
TO THE CITY OF MONTEVIDEO

WHEREAS, a petition has been filed with the City of Montevideo by all the owners of the hereinafter described lands requesting that said lands be annexed to the City of Montevideo and included within its corporate limits; and

WHEREAS, copies of said petition have been filed with the Minnesota Municipal Board, the Town Board of Sparta Township and the County Board of Chippewa County, and more than ninety (90) days has elapsed since said filing; and

WHEREAS, no objections to the annexation of the said lands to the City of Montevideo have been received from Sparta Township or from any other source;

THE CITY OF MONTEVIDEO DOES ORDAIN:

1. That the City Council of the City of Montevideo finds and determines (a) that the hereinafter described lands abut upon the city limits of the City of Montevideo on the north and are suburban in character and are susceptible to municipal control and development by the City of Montevideo, and (b) that the annexation of said lands to the City of Montevideo will be for the best interest of the City of Montevideo and the territory affected thereby.

2. That pursuant to Minnesota Statutes 414.033, subd. 5, those certain premises in the County of Chippewa and State of Minnesota described as follows:

Lot Two (2), except the northerly ten feet (10') in width thereof, and Lot Three (3) of Block One (1) and Lots One, Two and Three (1, 2 & 3) of Block Two (2) in Blabaum Addition according to the recorded Plat thereof on file in the Office of the Chippewa County Recorder, together with that portion of the roadway adjoining Blocks One and Two (1 & 2) which has been dedicated in the plat of Blabaum Addition less and except that portion of said roadway described as follows: Commencing at a point on the east line of Lot Two (2) in Block One (1) of said Blabaum Addition a distance of ten feet (10') south of the northeast corner thereof; thence north along the east line of Block One (1) of Blabaum Addition and the extension thereof to the north line of Lot Thirteen (13) of the plat of lots in the West Half of the Northeast Quarter (~~W $\frac{1}{2}$ of NE $\frac{1}{4}$~~) and the East Half of the Northwest Quarter (~~E $\frac{1}{2}$ of NW $\frac{1}{4}$~~) east of the Chippewa River in Section ~~Seven (7), Township One Hundred Seventeen (117), Range Forty (40)~~; thence east along the said north line of Lot Thirteen (13) and the extension thereof a distance of thirty feet (30'); thence south at right angles to a point directly east of the point of beginning; and thence west a distance of thirty feet (30') to the point of beginning, containing 3.47 acres, more or less,

be and the same hereby are annexed to and incorporated into the corporate limits of the City of Montevideo.

3. This ordinance shall take effect thirty (30) days

from and after its passage and publication.

Passed and adopted this 18th day of December, 1978.

Bry Larson
President - City Council

ATTEST:

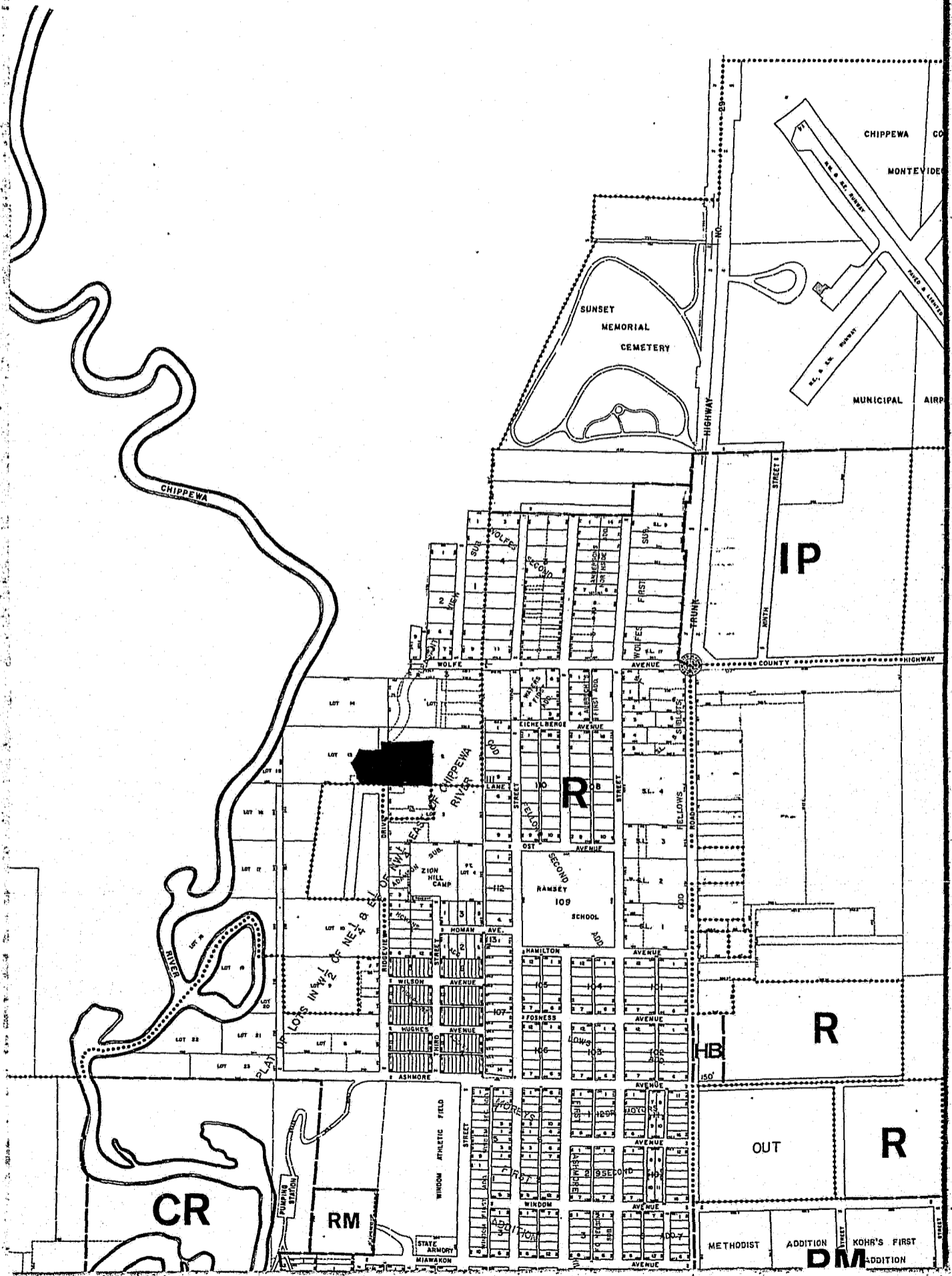
Deanne B. Sundler
City Clerk

STATE OF MINNESOTA
DEPARTMENT OF STATE
FILED
FEB 13 1979
John Anderson Howe
Secretary of State

The foregoing Ordinance is hereby approved this 19th #31980
day of December, 1978.

John L. Miller
Mayor

O.D.



BLABAUM ADDITION

PART OF LOTS 2 AND 13 OF THE PLAT OF LOTS IN W1/2-NE1/4 AND E1/2-NW1/4 EAST OF THE CHIPPEWA RIVER, SECTION 7, T117 - R 40, CITY OF MONTEVIDEO, CHIPPEWA COUNTY, MINNESOTA.

DEVELOPER
FRED BLABAUM
MONTEVIDEO, MINN.

PREPARED BY
BYRON DAHLE LAND SURVEYORS
WILLMAR, MINN.

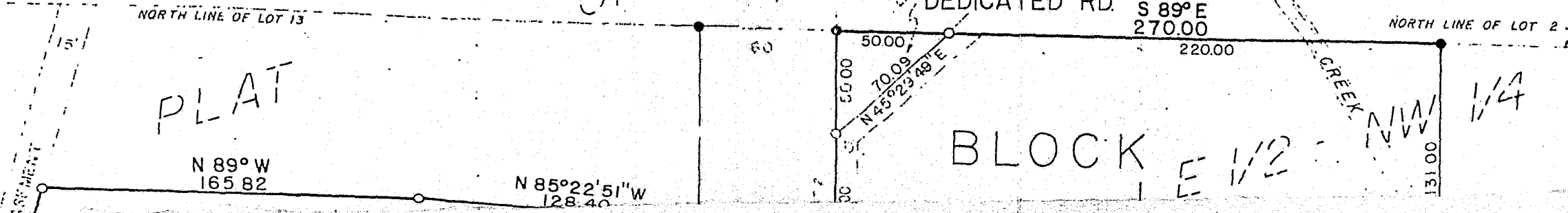
● INDICATES IRON MONUMENT FOUND.
○ INDICATES IRON PIPE MONU. PLACED WITH MINN. REG. NO. 10396 INSERTED THEREIN

ALL BEARINGS ARE ON ASSUMED DATUM.
TOTAL AREA = 4.34 ACRES
SCALE 1" = 60'

LOT 14

OF

EXISTING 80' LOTS
DEDICATED RD.



BLOCK

LOT 1
26,379 SQ FT

THE W 1/2

13 NE 1/4

18,958 SQ FT

S 89° E
165.04

S 89° E
169.40

ONE

4

26,258 SQ FT

18,757 SQ FT

THE 4

235.87

11700

SOUTH LINE OF LOT 13

352.87
S 89° E

EAST

2 LOT

OAK

BLUFF

12

7

2

60

EAST LINE OF LOT 1

268.89 NORTH

UTILITY EASEMENT

131.00

S 85° 22' 51" E
128.40

N 17° 37' 35" E
136.69

S 21° 03' 33" E
141.94

UTILITY EASEMENT

NORTH 563.00

11600

CHIPPEWA

3

31,315 SQ FT

S 89° E
270.00

270.00
N 89° W

31,315 SQ FT

N 89° W
270.00

34,097 SQ FT

11600
363.00 SOUTH

SOUTH LINE OF LOT 2

WEST LINE OF THE EAST 1/2 OF LOT 2

R 40

117

LOT

37