

An Equal Opportunity Employer

Phone: 296-2428



STATE OF MINNESOTA
MUNICIPAL BOARD

Suite 165 Metro Square
7th & Robert Streets
St. Paul, Minnesota 55101

NOV 28 1978

Mr. James E. Anderson, Clerk
City Hall
207 Lafayette Street
Minneapolis, Minnesota 55407

Re: Docket Number A-3421

Ordinance Number 2460

City of Wilton

Ladies and Gentlemen:

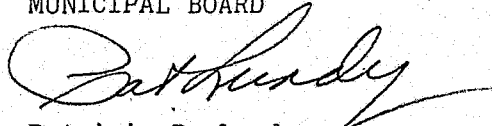
The Minnesota Municipal Board has now processed and approved the above ordinance and filing fee in accordance with Minnesota Statutes, Chapter 414, and the Rules of Procedure.

According to law, this annexation ordinance must be filed with the Township Clerk, County Auditor, Secretary of State and the Municipal Board. (Since the ordinance has already been filed with the Municipal Board, no additional copies are required.)

The annexation is final upon the date the ordinance is approved by the Board, which is the date of this letter.

Sincerely,

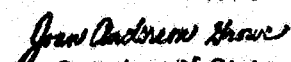
MUNICIPAL BOARD


Patricia D. Lundy
Assistant Executive Director

PDL:kj

cc: Secretary of State
County Auditor
Township
Attorney
Municipality

STATE OF MINNESOTA
DEPARTMENT OF STATE
FILED
DEC - 1 1978


Secretary of State

(REVISED 7/78)

131853
O.N.

Ordinance No. 2469
AN ORDINANCE EXTENDING THE CORPORATE LIMITS
OF THE CITY OF WINONA
TO INCLUDE CERTAIN UNINCORPORATED LAND ABUTTING
UPON THE CITY LIMITS

WHEREAS, a certain petition dated September 13, 1978, requesting annexation of the territory hereinafter described was duly presented to the City Council on the 18th day of September, 1978; and

WHEREAS, the land embraced within the area described in the petition is unplatted land, no part of which is included within the limits of an incorporated city, village or borough; and consists of 3.46 acres; and

WHEREAS, the petition was signed by all the owners; and

WHEREAS, no objections to the annexation have been received from the Town Board, the County Board of Commissioners, or any other governmental body; and

WHEREAS, the land described in the petition abuts upon the City of Winona limits at the Southeast boundary thereof; and

WHEREAS, copies of the said petition were filed with the Minnesota Municipal Commission, the concerned Town Board, the City of Winona and the Winona County Board of Commissioners; and

WHEREAS, the desirability of annexing said land has been carefully considered,

NOW, THEREFORE, the City of Winona does ordain:

Section 1. The City Council hereby determines (1) that the annexation will be to the best interests of the City and

of the territory affected; (2) that the territory described herein abuts upon the City limits and is urban or suburban in character; and (3) none of said territory is now included within the limits of any city, village or borough.

Section 2. The corporate limits of the City are hereby extended to include the land described as follows and the same is hereby annexed to and included within the City as effectually as if it had originally been a part thereof:

That part of the Northeast Quarter of the Northwest Quarter (NE 1/4 of the NW 1/4) and the Northwest Quarter of the Northeast Quarter (NW 1/4 of the NE 1/4) of Section One (1), Township One Hundred Six (106) North, Range Seven (7) West, Winona County, Minnesota, described as follows:

Beginning at the southeast corner of Lot Five (5), Block Two (2), Pleasant Valley Terrace Subdivision No. 4, according to the record plat thereof, as marked by a half inch iron pipe monument; thence South 70° 56' 00" East, 320.20 feet; thence North 81° 04' 00" East, 195.00 feet; thence North 16° 54' 59" West, 244.25 feet; thence North 9° 53' 35" West, 62.74 feet; thence North 36° 56' 56" West, 143.84 feet; thence North 88° 41' 13" West, 220.00 feet to the northeast corner of Lot Seven (7), Block One (1), said Pleasant Valley Terrace Subdivision No. 4 as marked by a half inch iron pipe monument; thence South 25° 19' 45" West, 120.05 feet to the southeast corner of said Lot Seven (7) as marked by a half inch iron pipe monument; thence South 19° 21' 17" East, 87.08 feet to the northeast corner of said Lot 5 as marked by a half inch iron pipe monument; thence South 29° 19' 12" West, 172.60 feet to the point of beginning.

Section 3. The City Clerk is hereby directed to file certified copies of this ordinance with the Minnesota Municipal Commission, the Secretary of State, the Town Clerk and the County Auditor.

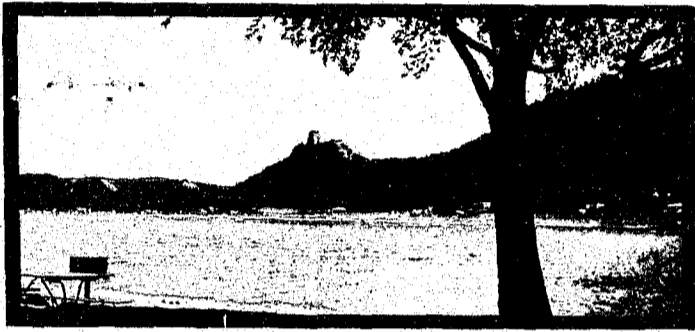
Section 4. This ordinance shall take effect upon its publication.

Passed November 16, 1978, at Winona, Minnesota.

Carl Lauenburger
Mayor

Attested by:

James D. Carter
City Clerk



CITY OF WINONA

CITY HALL · FOURTH & LAFAYETTE
WINONA, MINNESOTA · 55987
TELEPHONE (507) · 452-8550
452-4582 452-2881 452-4612
LIBRARY POLICE FIRE

November 13, 1978

Joan Anderson Growe
Secretary of State
State office Bldg.
St. Paul, Minnesota 55101

Dear Mrs. Growe:

Enclosed herewith find a certified copy of ordinance No. 2469 adopted by the City Council of Winona, extending the corporate limits of Winona to include approx. 3.46 acres abutting on the present corporate limits; all pursuant to a petition of 100% of property owners of the parcel involved. Also enclosed find a map showing the property in relationship to the City. This is pursuant to Minnesota Statutes 414.033

Kindly acknowledge.

Sincerely yours,

John S. Carter
John S. Carter,
City Clerk

JSC:me

Encl.



CITY OF WINONA

CITY HALL · FOURTH & LAFAYETTE
WINONA, MINNESOTA · 55987
TELEPHONE (507) · 452-8550
452-4582 452-2881 452-4622
LIBRARY POLICE FIRE

November 15, 1978

Joan Anderson Growe
Secretary of State
State Office Bldg.
St. Paul, Minnesota 55101

Dear Ms Growe:

On November 13th I mailed to you certification of an ordinance by the City of Winona annexing a parcel of land to the city, in which I enclosed a map showing the parcel in relationship to the city. The map mailed to you on the 13th is in error and should be discarded and the enclosed map attached instead.

Sincerely yours,

John S. Carter
John S. Carter,
City Clerk

JSC:me

Encl.

STATE OF MINNESOTA)
County of Winona) ss

I, John S. Carter, City Clerk in and for the City of Winona, county and state aforesaid, do hereby certify that I have the care and custody of the ordinances adopted by the City Council of said City; that the annexed and foregoing ordinance is a true, correct and compared copy of the original thereof as adopted by said City Council on the 6th day of November, 1978, numbered 2469, and published in the official news paper of the City on November 8, 1978, and now in full force and effect.

IN WITNESS WHEREOF, I have hereunto set my hand and the seal of said City of Winona, Minnesota, this 9th day of November, 1978.


City Clerk

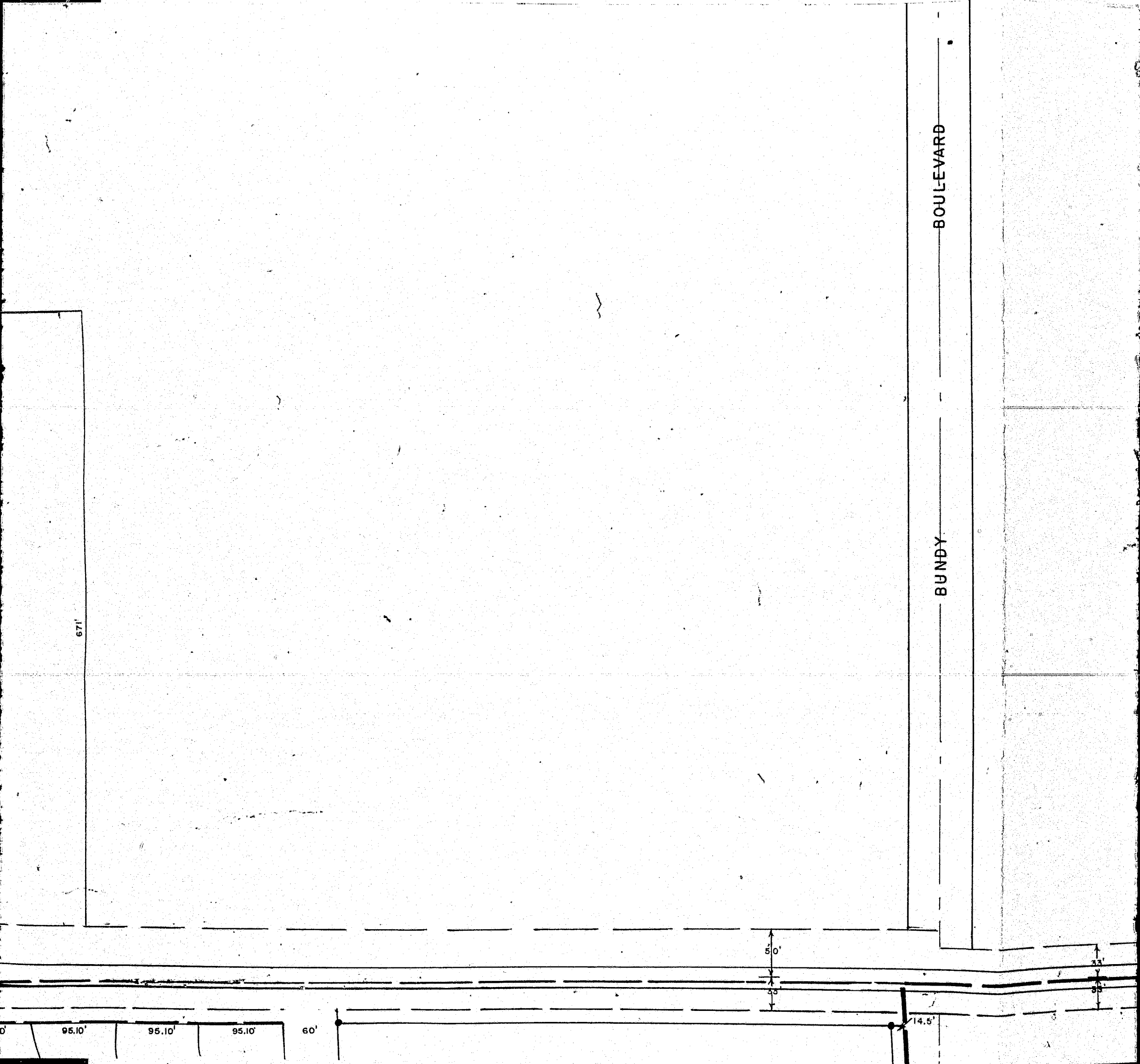
BOULEVARD

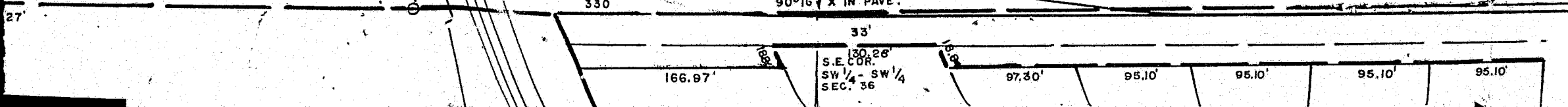
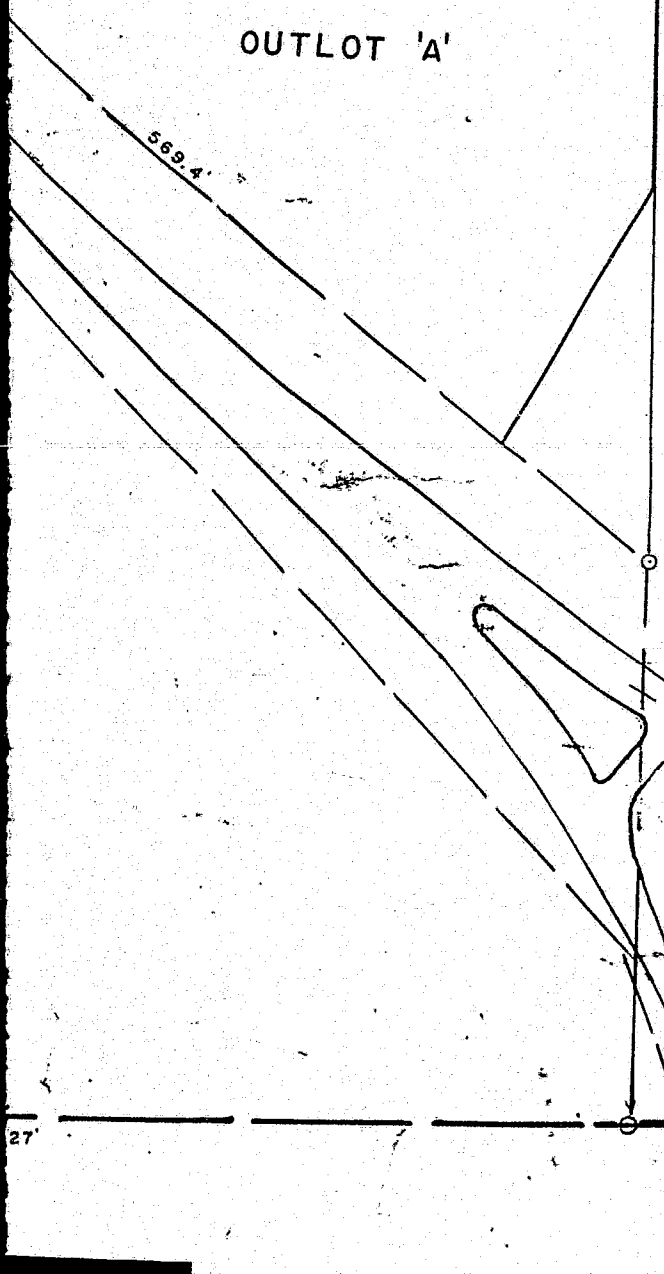
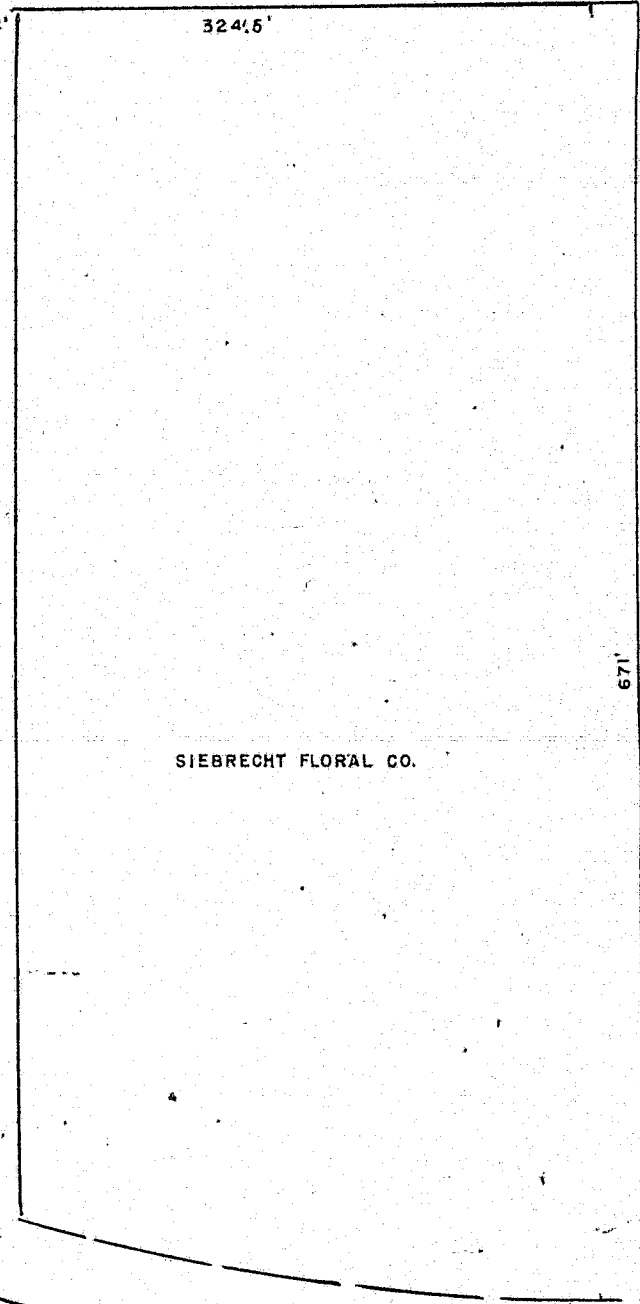
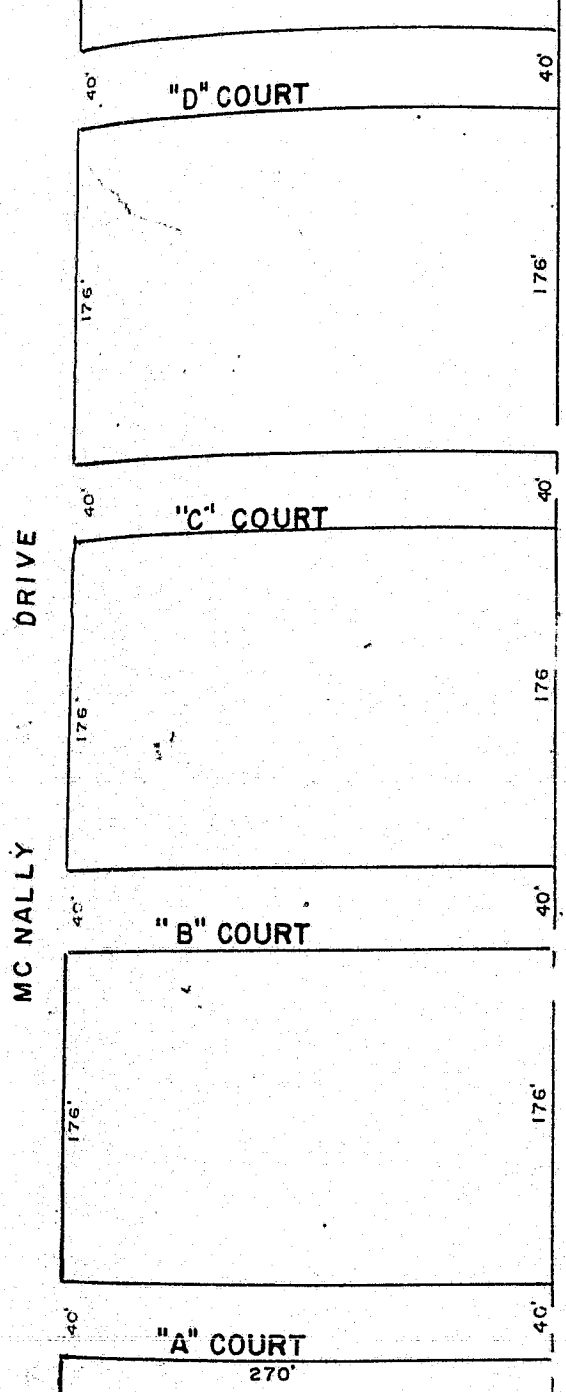
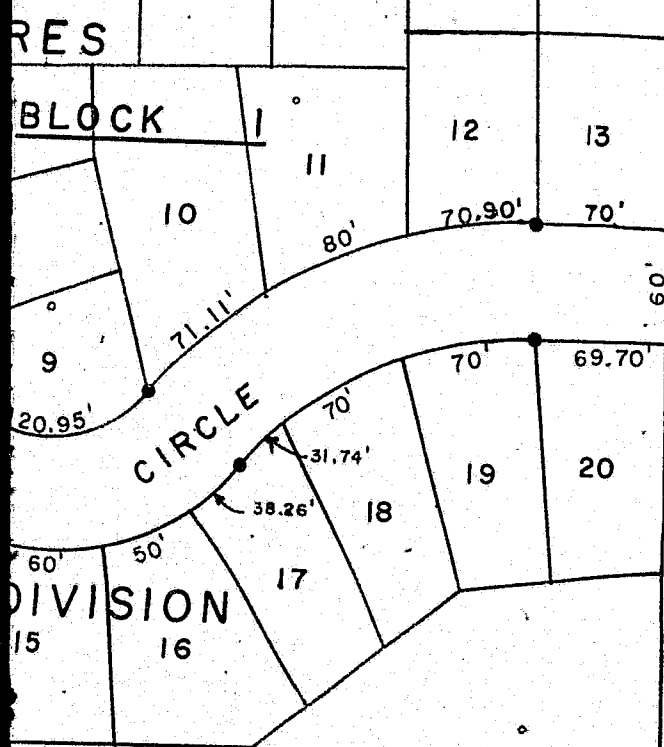
BUNDY

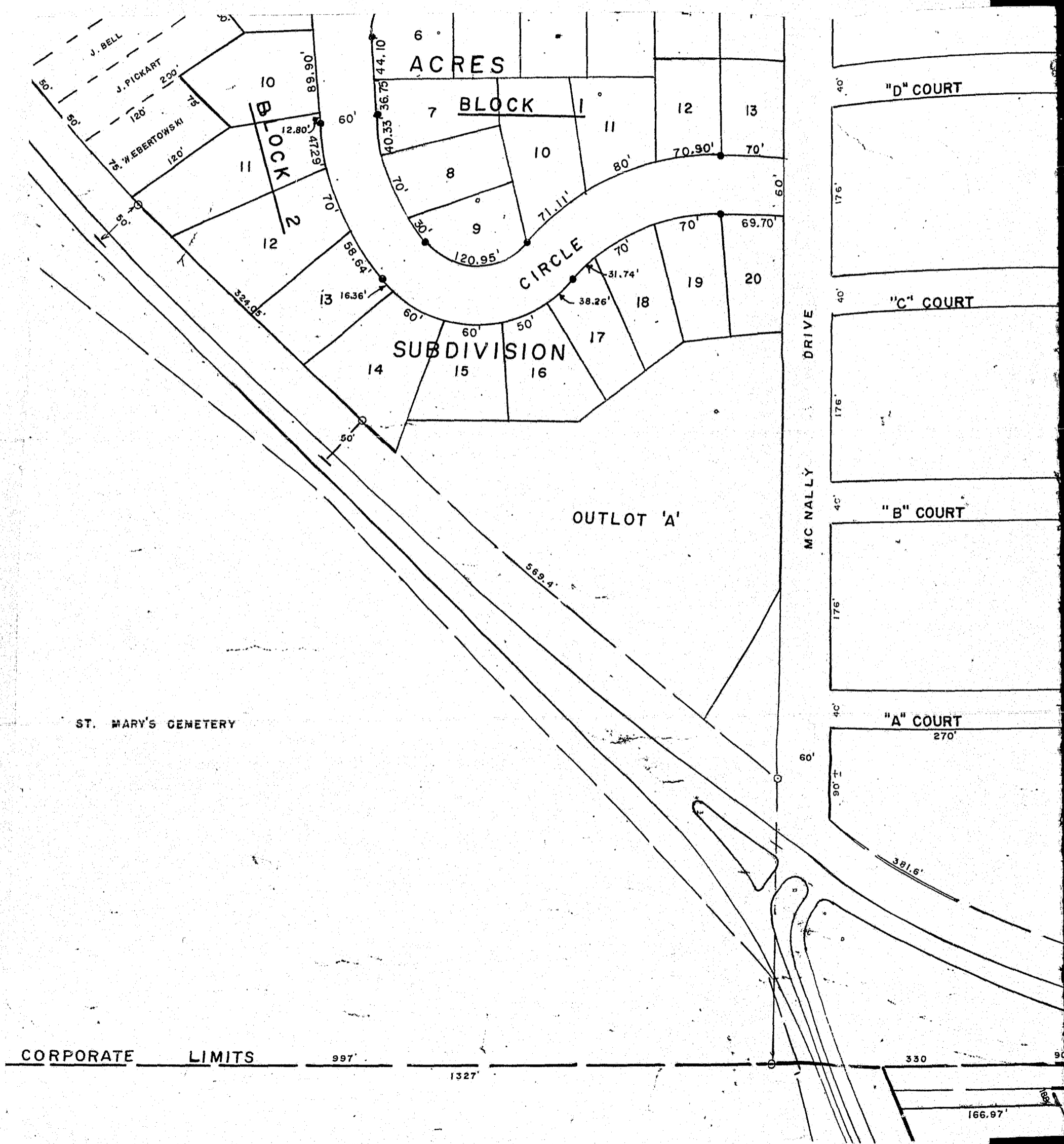
HOMER ROAD - CSAH-NO. 15
OLD HWY'S. 14-61 CORPORATE LIMITS

33'
35'

14.5'







6 ACRES

7 BLOCK 1

CIRCLE SUBDIVISION

OUTLOT 'A'

MC NALLY DRIVE

"D" COURT

"C" COURT

"B" COURT

"A" COURT

ST. MARY'S CEMETERY

CORPORATE LIMITS

997'

1327'

330

166.97'

270'

381.6'

569.4'

324.95'

J. BELL
J. PICKART
W. EBERTOWSKI

BLOCK 1

44.10'

36.75'

40.33'

70.0'

30.0'

120.95'

60.0'

50.0'

50.0'

50.0'

50.0'

50.0'

50.0'

50.0'

50.0'

50.0'

50.0'

50.0'

50.0'

50.0'

50.0'

50.0'

50.0'

50.0'

50.0'

50.0'

50.0'

60.0'

60.0'

60.0'

60.0'

60.0'

60.0'

60.0'

60.0'

60.0'

60.0'

60.0'

60.0'

60.0'

60.0'

60.0'

60.0'

60.0'

60.0'

60.0'

60.0'

60.0'

60.0'

60.0'

60.0'

60.0'

60.0'

60.0'

60.0'

60.0'

60.0'

60.0'

60.0'

60.0'

60.0'

60.0'

60.0'

60.0'

60.0'

60.0'

60.0'

60.0'

60.0'

60.0'

60.0'

60.0'

60.0'

60.0'

60.0'

60.0'

60.0'

60.0'

60.0'

60.0'

60.0'

60.0'

60.0'

60.0'

60.0'

60.0'

60.0'

60.0'

60.0'

60.0'

60.0'

60.0'

60.0'

60.0'

60.0'

60.0'

60.0'

60.0'

60.0'

60.0'

60.0'

60.0'

60.0'

60.0'

60.0'

60.0'

60.0'

60.0'

60.0'

60.0'

60.0'

60.0'

60.0'

60.0'

60.0'

60.0'

60.0'

60.0'

60.0'

60.0'

60.0'

60.0'

60.0'

60.0'

60.0'

60.0'

60.0'

60.0'

60.0'

60.0'

60.0'

60.0'

60.0'

60.0'

60.0'

60.0'

60.0'

60.0'

60.0'

60.0'

60.0'

60.0'

60.0'

60.0'

60.0'

60.0'

60.0'

60.0'

60.0'

60.0'

60.0'

60.0'

60.0'

60.0'

60.0'

60.0'

60.0'

60.0'

60.0'

60.0'

60.0'

60.0'

60.0'

60.0'

60.0'

60.0'

60.0'

60.0'

60.0'

60.0'

60.0'

60.0'

60.0'

60.0'

60.0'

60.0'

60.0'

60.0'

60.0'

60.0'

60.0'

60.0'

60.0'

60.0'

60.0'

60.0'

60.0'

60.0'

60.0'

60.0'

60.0'

60.0'

60.0'

60.0'

60.0'

60.0'

60.0'

60.0'

60.0'

60.0'

60.0'

60.0'

60.0'

60.0'

60.0'

60.0'

60.0'

60.0'

60.0'

60.0'

60.0'

60.0'

60.0'

60.0'

60.0'

60.0'

60.0'

60.0'

60.0'

60.0'

60.0'

60.0'

60.0'

60.0'

60.0'

60.0'

60.0'

60.0'

60.0'

60.0'

60.0'

60.0'

60.0'

60.0'

60.0'

60.0'

60.0'

60.0'

60.0'

60.0'

60.0'

60.0'

60.0'

60.0'

60.0'

60.0'

60.0'

60.0'

60.0'

60.0'

60.0'

60.0'

60.0'

60.0'

60.0'

60.0'

60.0'

60.0'

60.0'

60.0'

60.0'

60.0'

60.0'

60.0'

60.0'

60.0'

60.0'

60.0'

60.0'

60.0'

60.0'

60.0'

60.0'

60.0'

60.0'

60.0'

60.0'

60.0'

60.0'

60.0'

60.0'

60.0'

60.0'

60.0'

60.0'

60.0'

60.0'

60.0'

60.0'

60.0'

60.0'

60.0'

60.0'

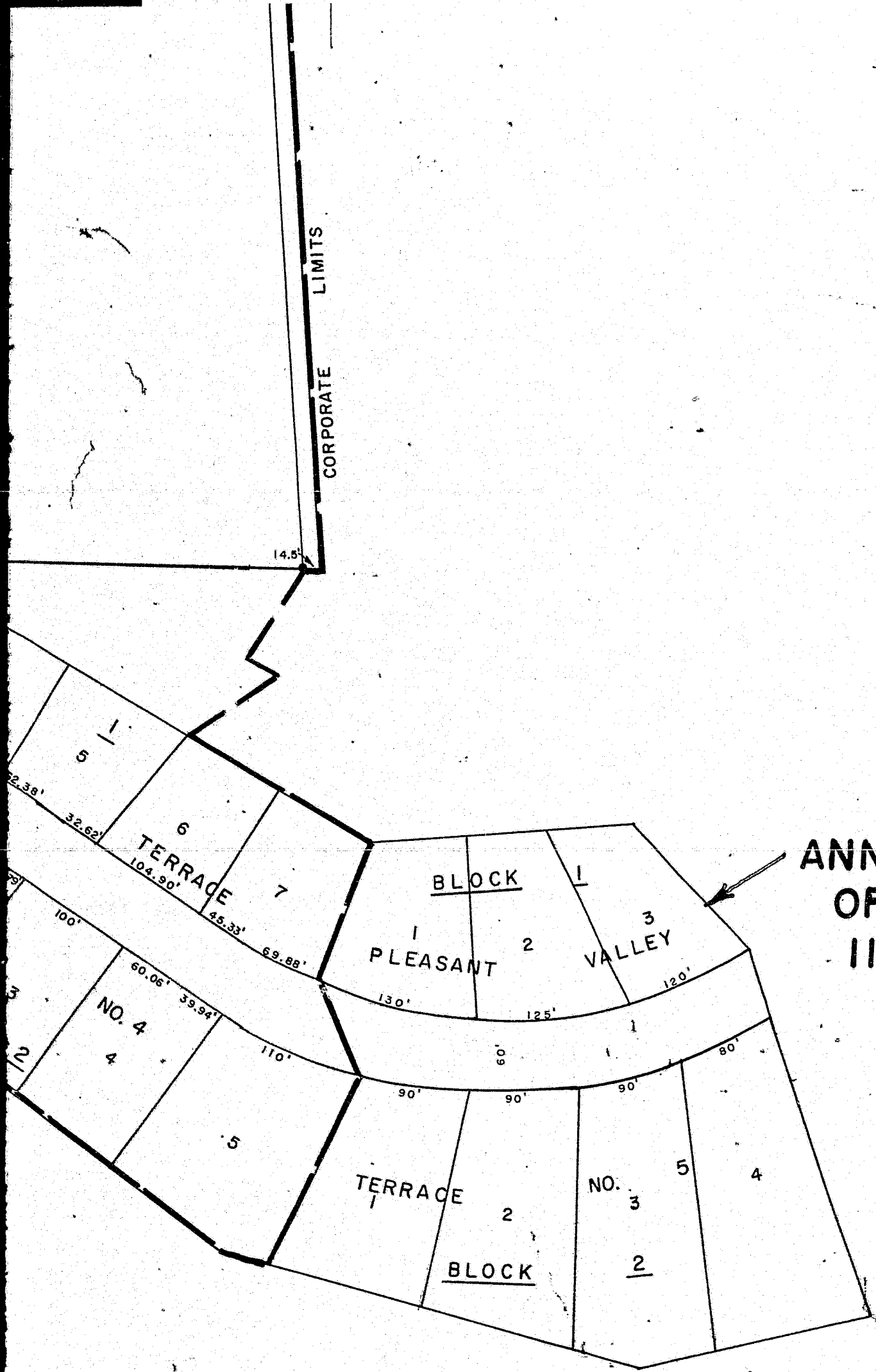
60.0'

60.0'

60.0'

60.0'

60.0'



ANNEXED BY
ORDINANCE
11-6-78

