

An Equal Opportunity Employer



Phone: 296-2428

STATE OF MINNESOTA
MUNICIPAL BOARD

Suite 165 Metro Square
7th & Robert Streets
St. Paul, Minnesota 55101

February 10, 1978

Ms. Carole Grimm
City Clerk
Room 100, City Hall
Rochester, MN 55901

Re: Docket Number A-3094 Ordinance Number 1870
City of Rochester

Ladies and Gentlemen:

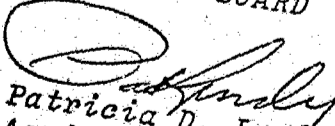
The Minnesota Municipal Board acknowledges receipt and filing of the above Ordinance and filing fee in accordance with Minnesota Statutes, Chapter 414, and the Rules of Procedure.

According to law, this annexation is final upon filing a copy of the ordinance with the Town Clerk, County Auditor, Secretary of State and the Municipal Board. (Since the ordinance has already been filed with the Municipal Board, no additional copies are required.)

Please refer to the above docket and ordinance numbers in any future reference to this annexation.

Sincerely yours,

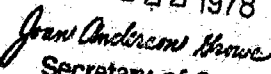
MUNICIPAL BOARD


Patricia D. Lundy
Assistant Executive Secretary

PDL:es

c.c. Secretary of State ✓
County Auditor
Township
Attorney
Municipality

STATE OF MINNESOTA
DEPARTMENT OF STATE
FILED
FEB 22 1978


Secretary of State

31307

#1870

STATE OF MINNESOTA,
COUNTY OF OLMSTED
CITY OF ROCHESTER, SS

I, Sharon K. Ayers, Deputy City Clerk of the City of Rochester, Minnesota do hereby certify that I have compared the appached copy of a resolution with the original resolution on file in my office and that the foregoing is a true and correct copy of the said resolution and of the whole thereof. Witness my hand this 12th day of January, 1977.

Sharon K. Ayers
Deputy City Clerk of Rochester, MN

(Seal of the City of
Rochester, Minnesota)

ORDINANCE NO. 1870
AN ORDINANCE ANNEXING
TO THE CITY OF ROCHESTER,
MINNESOTA, CERTAIN
UNPLATTED LAND SITU-
ATED IN SECTION 22, TOWNSHIP
107 NORTH, RANGE 14
WEST.

THE COMMON COUNCIL OF THE
CITY OF ROCHESTER DO OR-
DAIN:

Section 1. The following described
land in the Town of Cascade,
Olmsted County, Minnesota, is com-
pletely surrounded by land within
the municipal limits of the City of
Rochester:

That part of the Southeast
Quarter of Section 22, Township
107 North, Range 14 West de-
scribed as follows:

Commencing at the Northeast
corner of said Quarter Section,
thence Southerly along the East
line of said Quarter Section a
distance of 661.7 feet for place of
beginning; thence Southwesterly
at a deflection angle of 21
degrees 34 minutes to the right a
distance of 254.68 feet, thence
Northeasterly at a deflection an-
gle of 154 degrees 30 minutes to
the left a distance of 127.95 feet
to the East line of said Quarter
Section, thence North along the
said East Quarter line of Section
a distance of 149.8 feet; to point
of Beginning.

Section 2. The quantity of un-
platted land described in section 1 is
approximately 0.16 acres.

Section 3. Pursuant to the pro-
visions of Minnesota Statutes,
§414.032, subd. 4, the above de-
scribed land is hereby annexed,
added to and made a part of the City
of Rochester, Minnesota, as effec-
tually as if it had originally been a
part thereof.

Section 4. This ordinance shall
take effect and be in force from and
after its official publication and
from and after the filing of a
certified copy hereof with the Min-
nesota Municipal Commission, the
Cascade Town Clerk, the County
Auditor, and the Secretary of State.
Passed and adopted by the Com-
mon Council of the City of Roches-
ter, Minnesota, this 6th day of De-
cember, 1976.

/s/R. J. Postler
President of said
Common Council

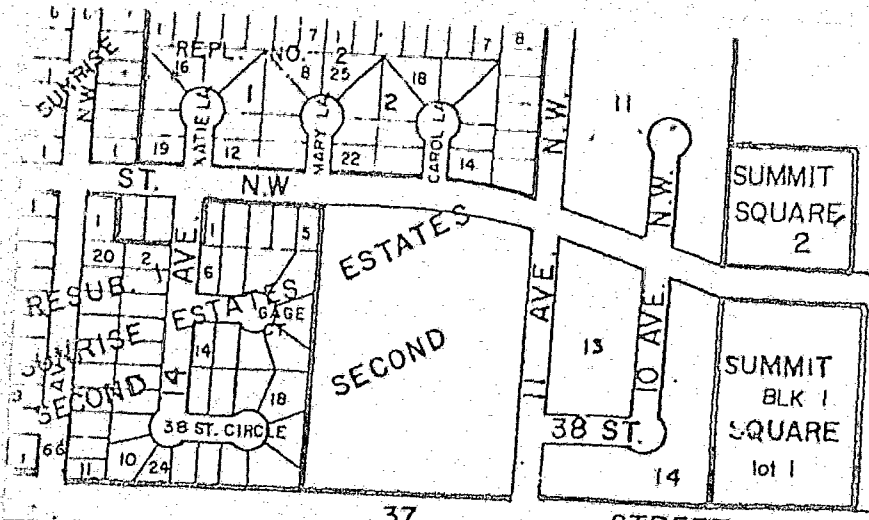
Attest: /s/Carole A. Grimm
City Clerk

Approved this 7th day
of December, 1976.
/s/Alex P. Smekta
Mayor of said City

(Seal of the City of
Rochester, Minnesota)
(12/11, 12/18)

STATE OF MINNESOTA
DEPARTMENT OF STATE
FILED
FEB 22 1977

John S. ...
Secretary of State



Ord #1870

37 STREET N.W.

