

An Equal Opportunity Employer

Phone: 296-2428



STATE OF MINNESOTA
MUNICIPAL BOARD
Suite 165 Metro Square
7th & Robert Streets
St. Paul, Minnesota 55101

January 13, 1978

Ms. Estelle Mueller
City Clerk
City Hall
Hamburg, MN 55339

Re: Docket Number A-3184 Ordinance Number 84
Notice of Intent

Ladies and Gentlemen:

City of Hamburg

The Minnesota Municipal Board acknowledges receipt and filing of the above Ordinance and filing fee in accordance with Minnesota Statutes, Chapter 414, and the Rules of Procedure.

According to law, this annexation is final upon filing a copy of the ordinance with the Town Clerk, County Auditor, Secretary of State and the Municipal Board. (Since the ordinance has already been filed with the Municipal Board, no additional copies are required.)

Please refer to the above docket and ordinance numbers in any future reference to this annexation.

Sincerely yours,

MUNICIPAL BOARD

Patricia D. Lundy
Patricia D. Lundy
Assistant Executive Secretary

PDL:es

c.c. Secretary of State ✓
County Auditor
Township
Attorney
Municipality

STATE OF MINNESOTA
DEPARTMENT OF STATE
FILED
JAN 23 1978

John Anderson Howe
Secretary of State

31221

Hamburg

ORDINANCE NO. 87

AN ORDINANCE ANNEXING CERTAIN LANDS INTO THE CORPORATE LIMITS OF THE CITY OF HAMBURG

WHEREAS, the City Council of the City of Hamburg has determined that certain lands in the Town of Young America are bordered by the corporate limits of the City of Hamburg on more than 60 per cent of their perimeter, and that said lands, as provided by Minnesota Statutes Section 414.033 may be annexed by Ordinance of the City of Hamburg unless objections thereto are filed within 60 days of receipt by the Town of Young America of a Notice as provided by said Section 414.033; and

WHEREAS, such Notice was served upon the Town Clerk of the Town of Young America on the 5 day of July, 1977, and more than sixty (60) days have passed since such service and no objections thereto have been filed by the Town of Young America or any other party:

The City Council of the City of Hamburg, Carver County, Minnesota ordains:

Section 1. Declaration. It is hereby determined that the territory described below is bordered by the corporate limits of the City of Hamburg on more than 60 per cent of its perimeter; that said lands are not now included in any other municipality; that said lands are conditioned as properly to be subjected to municipal government; and that annexation of said lands would be in the best interests of the City of Hamburg and of the territory to be annexed.

Section 2. Territory Annexed. The corporate limits of the City of Hamburg are hereby extended to encompass and embrace all of the territory described as follows, to-wit:

Commencing at a point 25 1/4 rods North of the Southeast corner of Section 29, Township 115 North of Range 26 West; thence running North along the Section line between Sections 28 and 29, a distance of 337 feet to a point, which point is the point of beginning of the tract to be herein described; thence continuing North on said same line a distance of 34.655 feet to a point which is 788.28 feet North of the Southeast corner of Section 29, Township 115 North of Range 26 West as measured along the East line thereof; thence on a bearing of North 89* 35' 00" West parallel with the South line of said Section 29 for a distance of 165.00 feet; thence on a bearing of South, parallel with said East line of Section 29, a distance of 34.655 feet to a point; thence South 89* 35' 00" East parallel with said South line of Section 29 a distance of 165.00 feet to the actual point of beginning.

Section 3. Filing. The City Clerk is hereby directed to file certified copies of this Ordinance with the Municipal Board of the State of Minnesota, the Secretary of State of the State of Minnesota, and the Auditor of Carver County.

Section 4. Effective Date of Annexation. Annexation shall be deemed final upon the filing of the copies of this Ordinance as directed in Section 3 and publication as provided by law.

Adopted by the City Council of the City of Hamburg this 6 day of Sept., 1977.

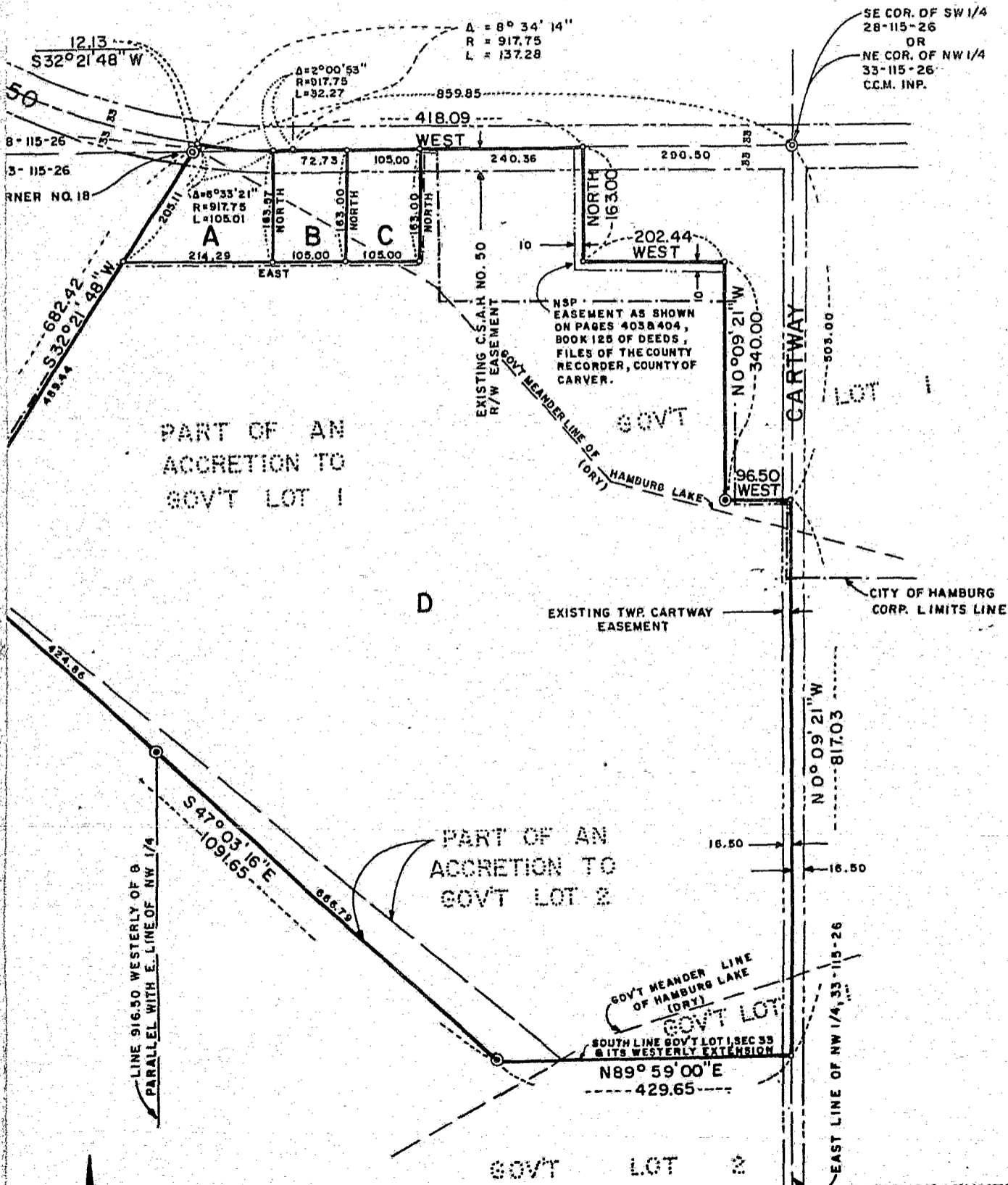
LeRoy Glander
LeRoy Glander, Mayor

Attest: Estelle R. Mueller
Estelle Mueller, City Clerk

REFERENCED LAND SURVEY NO. 70

CARVER COUNTY, MINNESOTA
MARCH 1977

GOV'T LOT 1 --- SEC 28



STATE OF MINNESOTA
DEPARTMENT OF STATE
FILED
JAN 23 1978
Jan Anderson Howe
Secretary of State

31221
CD