

An Equal Opportunity Employer

Phone: 296-2428



STATE OF MINNESOTA
MUNICIPAL BOARD

Suite 165 Metro Square
7th & Robert Streets
St. Paul, Minnesota 55101

November 10, 1977

Mr. Bruce L. Brown
City Clerk-Treasurer
Box 30
Wadena, MN 56482

Re: Docket Number A-3191 Ordinance Number 168

Ladies and Gentlemen:

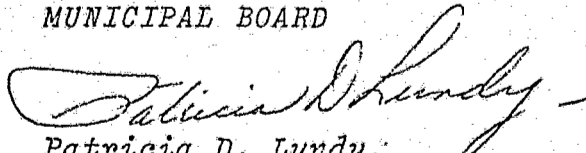
The Minnesota Municipal Board acknowledges receipt and filing of the above Ordinance and filing fee in accordance with Minnesota Statutes, Chapter 414, and the Rules of Procedure.

According to law, this annexation is final upon filing a copy of the ordinance with the Town Clerk, County Auditor, Secretary of State and the Municipal Board. (Since the ordinance has already been filed with the Municipal Board, no additional copies are required.)

Please refer to the above docket and ordinance numbers in any future reference to this annexation.

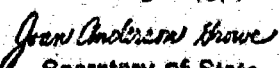
Sincerely yours,

MUNICIPAL BOARD


Patricia D. Lundy
Assistant Executive Secretary

PDL:es

c.c. Secretary of State ✓
County Auditor
Township
Attorney
Municipality

STATE OF MINNESOTA
DEPARTMENT OF STATE
FILED
NOV 17 1977

Secretary of State

STATE OF MINNESOTA)
)
COUNTY OF WADENA) SS CERTIFICATION
)
CITY OF WADENA)

I Bruce L. Brown, the duly appointed, qualified and acting city clerk treasurer of the City of Wadena, Minnesota, Wadena County, Minnesota, do hereby certify that the attached

ORDINANCE NO. 168

AN ORDINANCE EXTENDING THE CORPORATE LIMITS OF THE CITY OF WADENA TO INCLUDE CERTAIN UNINCORPORATED UNPLATTED LAND ABUTTING UPON THE CITY LIMITS.

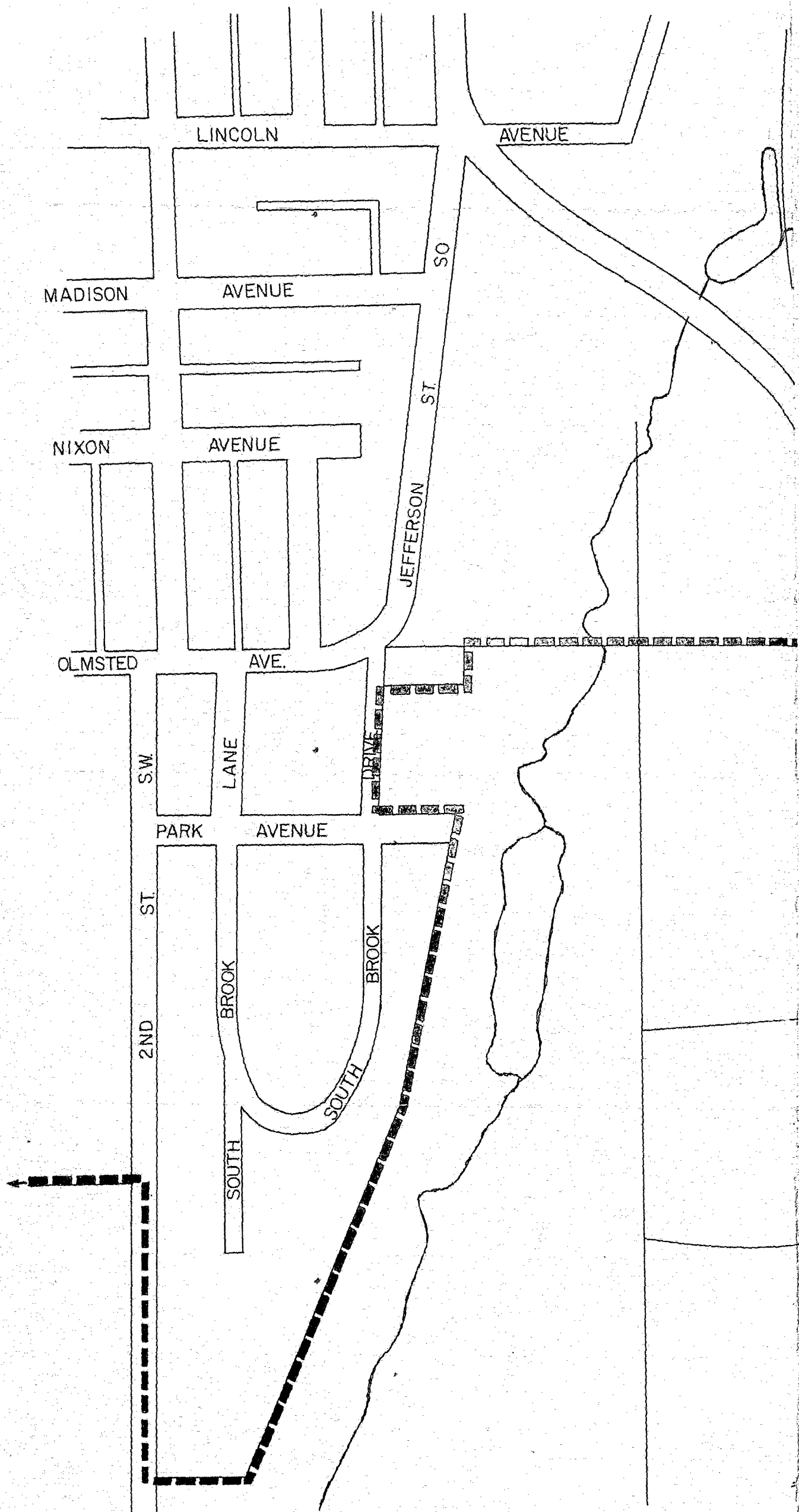
is a true and correct copy of said Ordinance as adopted by the city council, City of Wadena, Minnesota, on July 11, 1977, duly published in the Wadena Pioneer Journal, the official newspaper for publications of the City Council, City of Wadena, Minnesota on July 13, 1977, kept on file in my office pursuant to Minnesota Statutes.

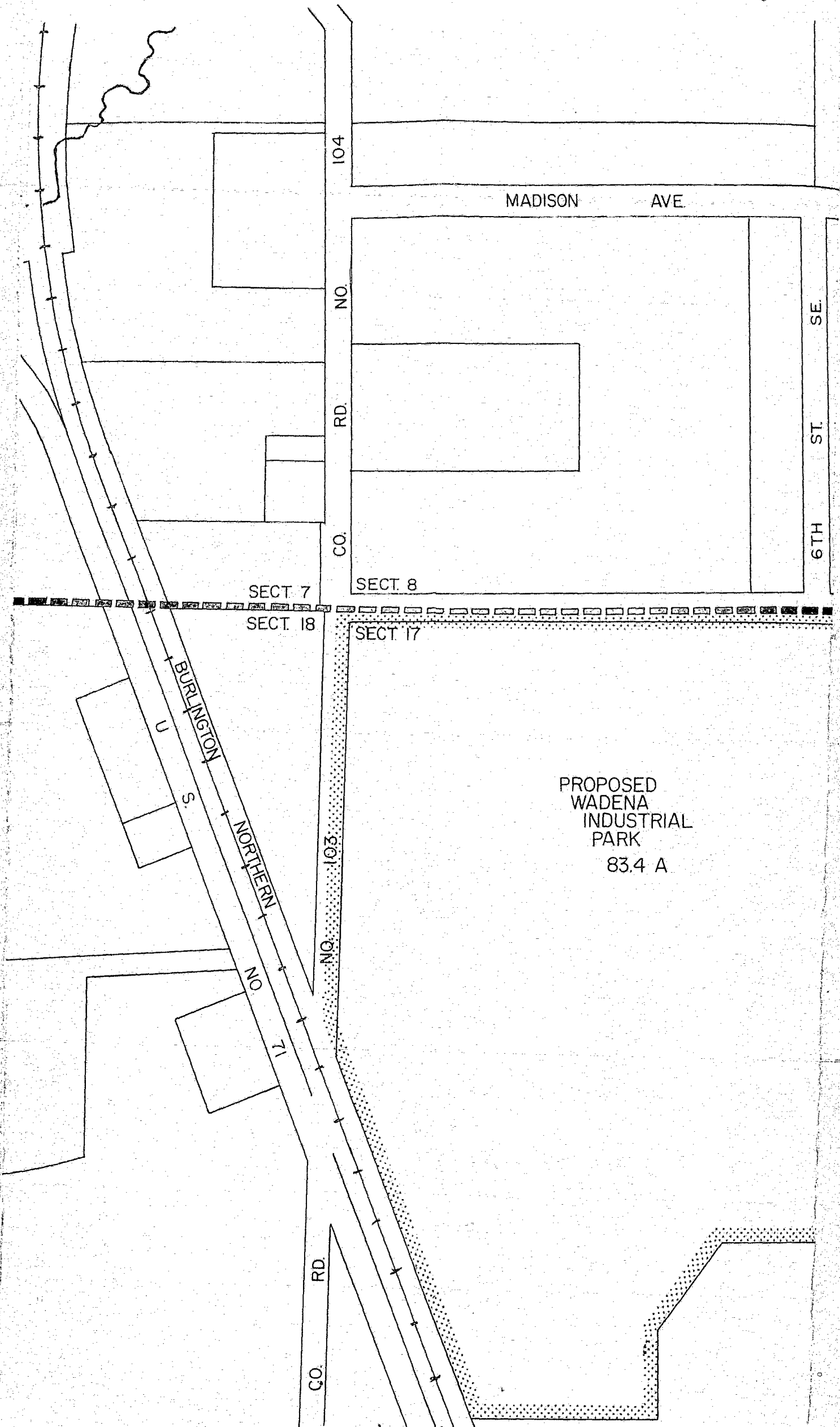
WITNESS my hand and seal of my office this 12th day of July, 1977.

(seal)

Bruce L. Brown
City Clerk-Treasurer

City of Wadena, Minnesota





MADISON AVE

6TH ST SE

104
NO
RD
CO

SECT 7

SECT 8

SECT 18

SECT 17

PROPOSED
WADENA
INDUSTRIAL
PARK
83.4 A

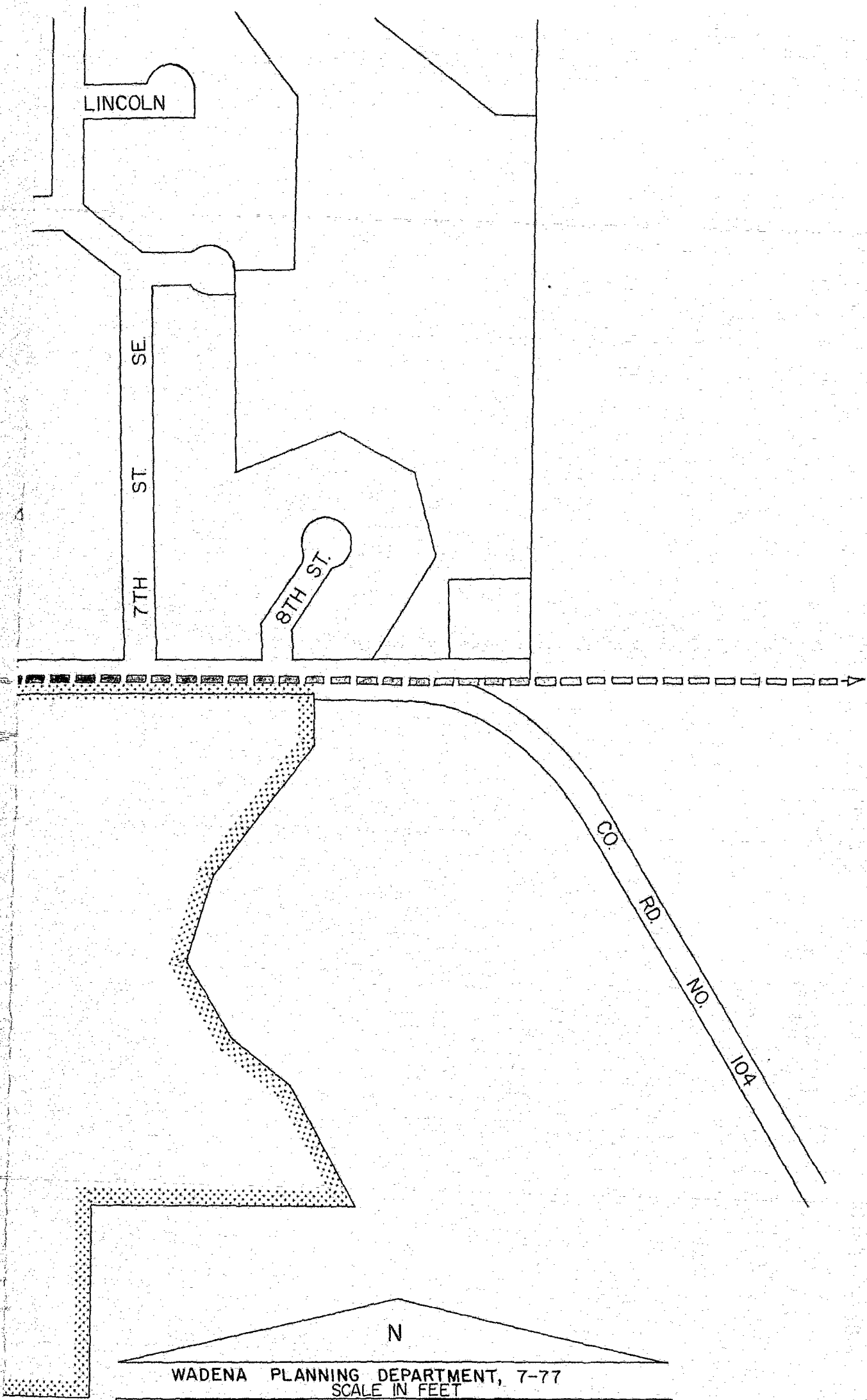
BURLINGTON
NORTHERN

103
NO

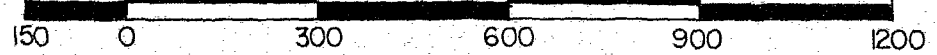
NO

71

RD
CO



WADENA PLANNING DEPARTMENT, 7-77
SCALE IN FEET



ANNEXATION
TO CITY OF WADENA
CITY LIMITS — — — — —
ANNEXED LAND ·······
UNPLATTED 834 A

ORDINANCE NO. 168

AN ORDINANCE EXTENDING THE CORPORATE LIMITS OF THE CITY OF WADENA TO INCLUDE CERTAIN UNINCORPORATED PROPERTY OWNED BY AND ABUTTING UPON THE LIMITS OF THE CITY OF WADENA.

WHEREAS, the territory described below is not presently within the corporate limits of any incorporated city, village, or borough; and
WHEREAS, this territory abuts upon the corporate limits of the City of Wadena at the South boundary thereof and is deemed to be urban in character; and

WHEREAS, this territory is owned in fee by the City of Wadena;

The Wadena City Council of Wadena ordains:

Section 1. Territory Annexed. The corporate limits of the City of Wadena are hereby extended to include the unplatted property described as follows now owned by the City: Northwest Quarter (NW $\frac{1}{4}$) of Section Seventeen (17), Township 134 North, Range 35 West, Wadena County, except that part platted as Pine View Acres, and except that part lying westerly of the Great Northern Railway right-of-way, subject to easement and reservations of record, if any.

Section 2. Filing. The City Clerk is directed to file certified copies of this ordinance with the Secretary of State, Wadena Township Board, Wadena County Auditor, and the Minnesota Municipal Commission.

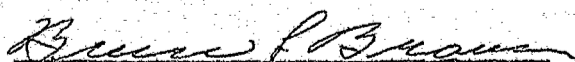
Section 3. Effective Date of Annexation. This ordinance takes effect upon its passage and publication and filing of certified copies as directed in Section 2.

Adopted by the City of Wadena, Wadena County, Minnesota, July 11,
1977.



R. D. Iken, Mayor

ATTEST:



Bruce L. Brown, City Clerk

STATE OF MINNESOTA
DEPARTMENT OF STATE
FILED
NOV 17 1977

John Anderson Brown
Secretary of State

31128
D. D.

31128
R.O.