

An Equal Opportunity Employer

Phone: 296-2428



STATE OF MINNESOTA
MUNICIPAL BOARD

Suite 165 Metro Square
7th & Robert Streets
St. Paul, Minnesota 55101

August 12, 1977

Mr. Chester L. Medin
City Clerk
City Hall
Chisago City, Minnesota 55013

Re: Docket Number A-3156 Ordinance Number #100
Chisago City - Larsen - Boyd - Hagberg

Ladies and Gentlemen:

The Minnesota Municipal Board acknowledges receipt and filing of the above Ordinance and filing fee in accordance with Minnesota Statutes, Chapter 414, and the Rules of Procedure.

According to law, this annexation is final upon filing a copy of the ordinance with the Town Clerk, County Auditor, Secretary of State and the Municipal Board. (Since the ordinance has already been filed with the Municipal Board, no additional copies are required.)

Please refer to the above docket and ordinance numbers in any future reference to this annexation.

Sincerely yours,

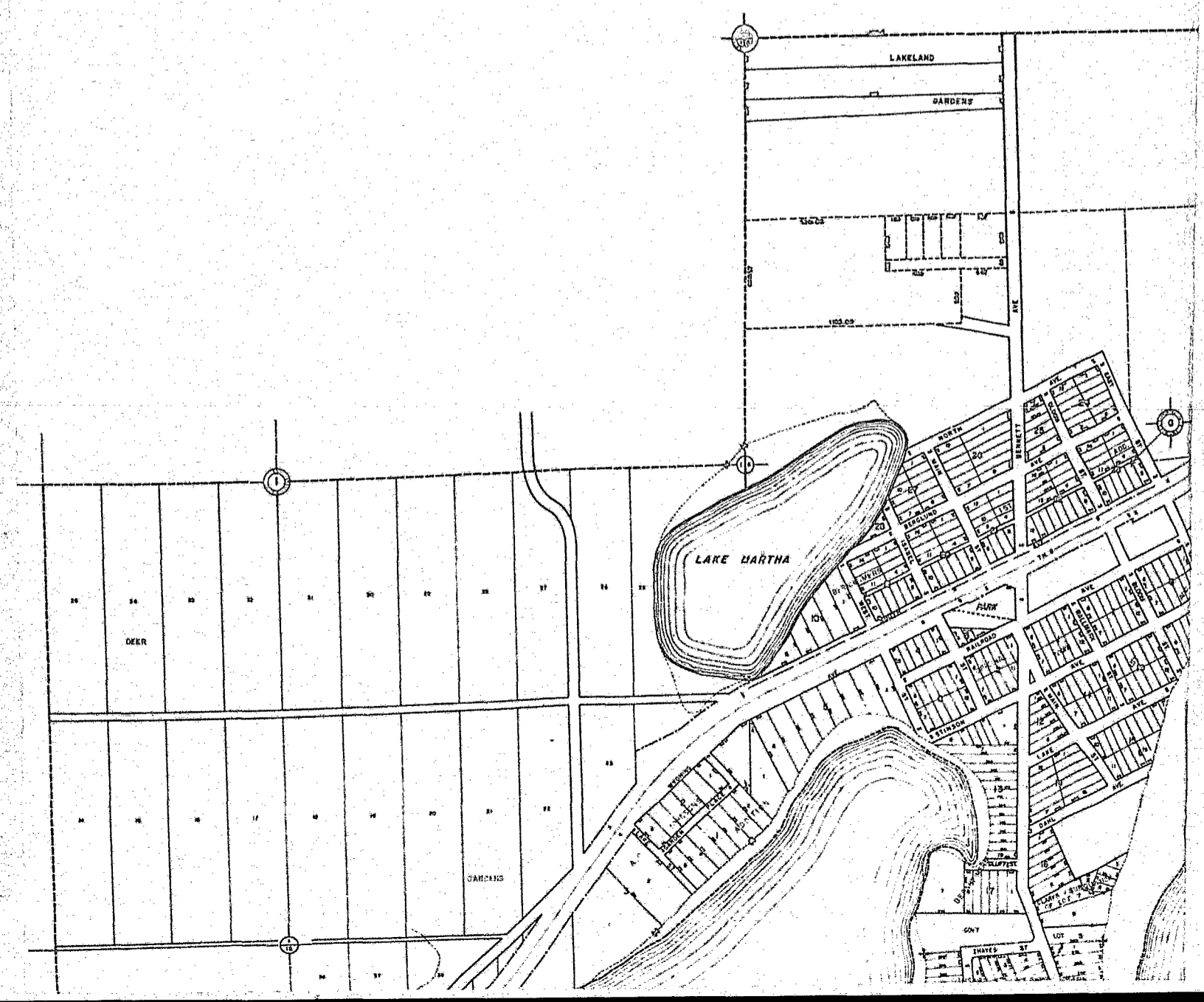
MUNICIPAL BOARD

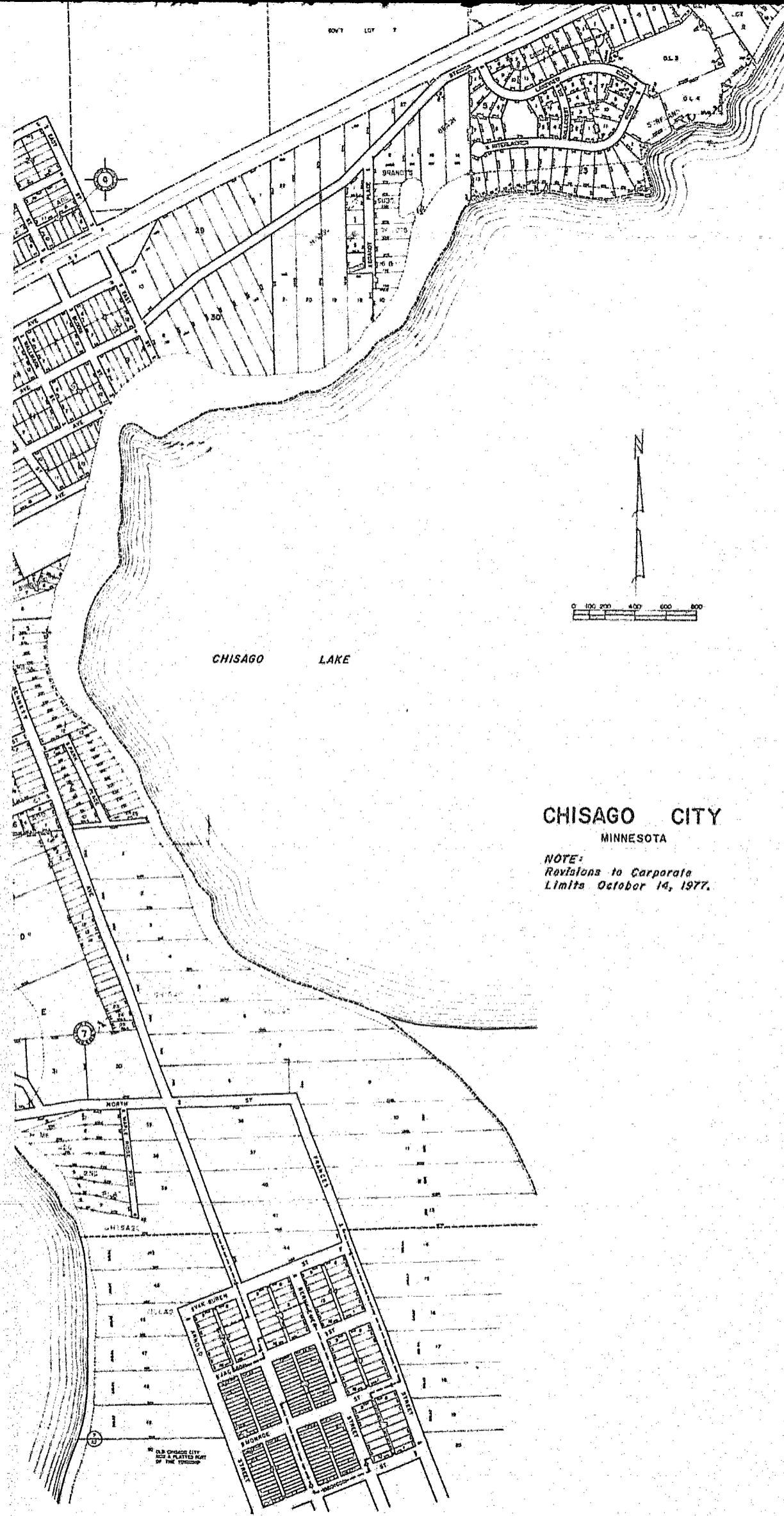
Patricia D. Lundy
Patricia D. Lundy
Assistant Executive Secretary

PDL:es

c.c. Secretary of State
County Auditor
Township
Attorney
Municipality

STATE OF MINNESOTA
DEPARTMENT OF STATE
FILED
AUG 17 1977
John Anderson Howe
Secretary of State
30957



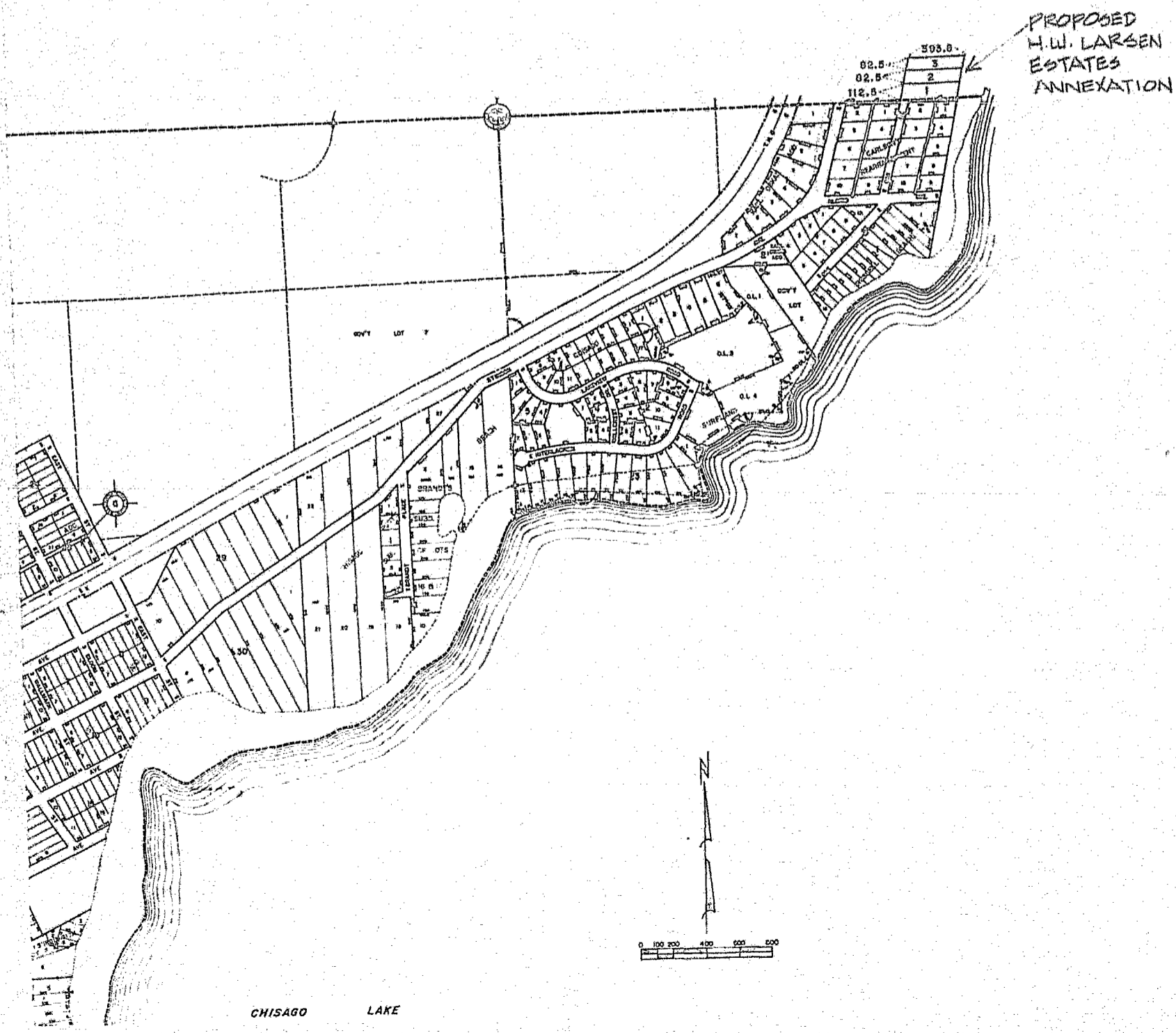


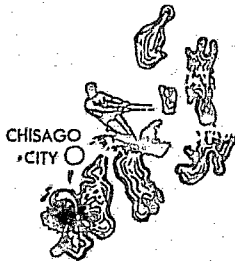
CHISAGO LAKE

CHISAGO CITY
MINNESOTA

NOTE:
Revisions to Corporate
Limits October 14, 1977.

ALL CHISAGO CITY
LOT & PLATTS PART
OF THE TOWNSHIP





Chisago

CITY OF
Chisago City, Minnesota 55013
GATEWAY TO CHISAGO LAKES

Chisago City, Minn.
Telephone 612-368-2545

June 15, 1977

Secretary of State
State Capital Building
Saint Paul, Minnesota 55101

Joan Growe,

Herewith enclosed is a copy of Ordinance # 100, in regards to annexation and the extending of the corporate limits of the City of Chisago City, Minnesota, as adopted by the City Council the 9th day of June, 1977.

A copy of the Ordinance # 100 and a check for fifty(50) dollars has been sent to the Minnesota Municipal Commission with special references to Docket # A-3156, Chisago City.

Sincerely,

Chester L. Medin

Chester L. Medin, Clerk
City of Chisago City, MN

Chicago

Copy

June 15, 1977

Minnesota Municipal Commission
304 Capital Square Building
Saint Paul, Minnesota 55101

Gentlemen:

RE: Docket # A - 3156

Herewith enclosed is our check in the amount of Fifty(50) Dollars, and a copy of our Ordinance # 100, extending the corporate limits of the City of Chicago City, Chicago City, Minnesota.

I am also sending a copy of this Ordinance # 100 to the Secretary of State.

Sincerely,

Chester L. Medin, Clerk
City of Chicago City, MN

CLM:sad

An Ordinance extending the corporate limits of the City of Chicago, Minnesota.

WHEREAS the territory described below is not presently within the corporate limits of any incorporated city, village or town, and

WHEREAS the sole owners of the property described below petitioned the City Council of the City of Chicago City, Minnesota on the 15th day of March, 1977 to annex the same to the City of Chicago City, and,

WHEREAS, by resolution adopted by the City Council on April 16, 1977 and carried upon the Chicago County Board of Commissioners, the Chicago Lakes Township Board and the Minnesota Municipal Commission by mailing a copy of same to each of them on the 9th day of May, 1977, the said City Council expressed its intention to annex the territory described below to said City, and,

WHEREAS no objections have been received from any party to the proposed annexation.

NOW THEREFORE the City Council of the City of Chicago City, Chicago County, Minnesota enacts as follows:

Section 1. The corporate limits of the City of Chicago City are hereby extended to include the property legally described as follows:

lots 1, 2, and 3 of the H.W. Larsen estate.

South 275 feet of lot six(6) lying East of Highway 0 5 except the following:

Beginning at the point of intersection of the South line of lot six(6) and the East line of old Highway 0 5; thence East along the South line 311.5 ft. more or less to a point in line with the West line of said Street in A.W. Carlson's rearrangement; thence North 7 degrees 37 minutes East a distance of 277.45 ft. to a point that is 275 ft. North of the South line of said lot six(6) which measured at right angles; thence West 240 ft. to the East line of old Highway 0 5; thence in a Southern direction along the East line of said Highway to the place of beginning, all in Section 3, Township 34, Range 20.

Section 2. The City Clerk is directed to file certified copies of this Ordinance, together with the Affidavit of Publication thereof, with the Secretary of State, the County Auditor of Chicago County, Minnesota and the Minnesota Municipal Commission.

Section 3. This Ordinance takes effect upon its passage and publication according to law.

Adopted by the City Council of the City of Chicago City, Minnesota this 9th day of June, 1977.

Tom Craig
Tom Craig, Mayor

Charles L. Hedden
Charles L. Hedden, Clerk

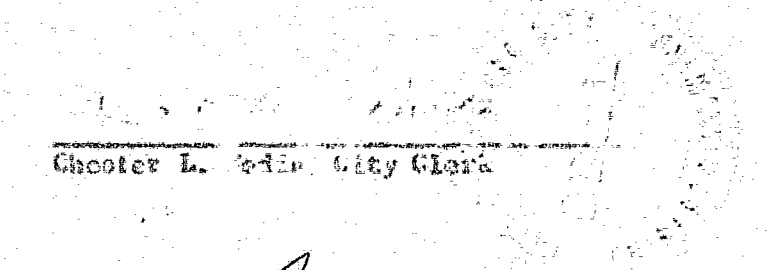
Charles L. Hedden

STATE OF MINNESOTA
DEPARTMENT OF STATE
FILED
AUG 17 1977
James O. Johnson
Secretary of State

STATE OF ILLINOIS
COUNTY OF CHICAGO

The undersigned being duly qualified and being City Clerk of the City of Chicago do hereby certify that the foregoing is a true and exact copy of the Ordinance enacted by the City of Chicago City pertaining to the annotation of certain real estate thereto described therein, and that I have compared the original thereof on the file in the office of the City Clerk and that the above is a true, full and correct transcript of the same as the same relates to the matters stated therein.

WITNESS my hand as City Clerk and of the City of Chicago this
9th day of June, 1977.


Chester L. Medina, City Clerk

Chester L. Medina, Clerk