



STATE OF MINNESOTA  
MUNICIPAL BOARD

Suite 165 Metro Square  
7th & Robert Streets  
St. Paul, Minnesota 55101

July 8, 1977

Mr. Adolph Carlson  
City Clerk  
City Hall  
Starbuck, Minnesota 56381

Re: Docket Number A-3142 Ordinance Number #89  
Starbuck

Ladies and Gentlemen:

The Minnesota Municipal Board acknowledges receipt and filing of the above Ordinance and filing fee in accordance with Minnesota Statutes, Chapter 414, and the Rules of Procedure.

According to law, this annexation is final upon filing a copy of the ordinance with the Town Clerk, County Auditor, Secretary of State and the Municipal Board. (Since the ordinance has already been filed with the Municipal Board, no additional copies are required.)

Please refer to the above docket and ordinance numbers in any future reference to this annexation.

Sincerely yours,

MUNICIPAL BOARD

*Patricia D. Lundy*  
Patricia D. Lundy

Assistant Executive Secretary

PDL:es

c.c. Secretary of State  
County Auditor  
Township  
Attorney  
Municipality

STATE OF MINNESOTA  
DEPARTMENT OF STATE  
FILED  
JUL 12 1977

*Joan Anderson Howe*  
Secretary of State

*Starbuck*

LAW OFFICES

CHARLES R. WAHLQUIST

STARBUCK, MINNESOTA 56381

Phone 239-2285

Res. Phone 239-2081

April 11, 1977

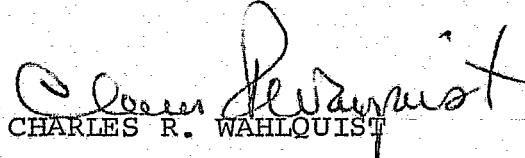
Minnesota Secretary of State  
State Capitol  
St. Paul, Minnesota 55101

Gentlemen:

Re: City of Starbuck Annexation

Pursuant to the recent annexation by the City of Starbuck,  
enclosed please find certified copy of Ordinance No. 89.  
Will you please place in your file.

Very truly yours,

  
CHARLES R. WAHLQUIST

CRW:jw  
Encl:

ORDINANCE NO. 00

AN ORDINANCE EXTENDING THE CORPORATE LIMITS OF THE CITY OF STARBUCK TO INCLUDE CERTAIN UNINCORPORATED PROPERTY OWNED BY AND ABUTTING UPON THE LIMITS OF THE CITY.

WHEREAS, the territory described below is not presently within the corporate limits of any incorporated city, or borough; and

WHEREAS, this territory abuts upon the corporate limits of the city at the north boundary thereof and is deemed to be urban in character; and

WHEREAS, this territory is owned in fee by the city;

The city council of Starbuck ordains:

Section 1. Territory annexed. The corporate limits of the city of Starbuck are hereby extended to include the unplatted property described as follows now owned by the city:

All that part of Government Lot 4 Section 25, Township 125, Range 39, Pope County, Minnesota, lying East of Minnesota Highway #29 and South of a line described as: Commencing at the West Quarter corner of Section 25, Township 125, Range 39, thence South on the section line 963.5 feet, to the point of beginning, thence easterly at an angle of 95°12', approximately 842.85 foot to the shore of Lake Minnowaska, containing approximately 12.14 acres.

The North 1689 foot of Government Lot 4, Section 36, Township 125, Range 39, Pope County, Minnesota, lying east of Minnesota Highway #29, containing approximately 5.02 acres.

Section 2. Filing. The city clerk is directed to file certified copies of this ordinance with the Secretary of State, the County Auditor of the county in which the property is located, the Town Clerk of the affected township and the Minnesota Municipal Commission.

Section 3. Effective date of annexation. This ordinance takes effect upon its passage, posting and publication and the filing of certified copies as directed in Section 2.

Adopted by the city of Starbuck, Minnesota, April 4, 1977.

Attest:

/s/ Adolph Carlson  
Adolph Carlson, Clerk

/s/ Larry Kittelson  
Larry Kittelson, Mayor

Published in The Starbuck Times April 6, 1977.

I, Adolph Carlson, Clerk of the City of Starbuck, Pope County, Minnesota, as the keeper of the City records, and do hereby certify that the foregoing Ordinance No. 89 is a true and correct copy of ordinance according to the city records, adopted at a special meeting of the City Council held on the 4th day of April, 1977 and was subsequently published in the Starbuck Times on April 6, 1977.

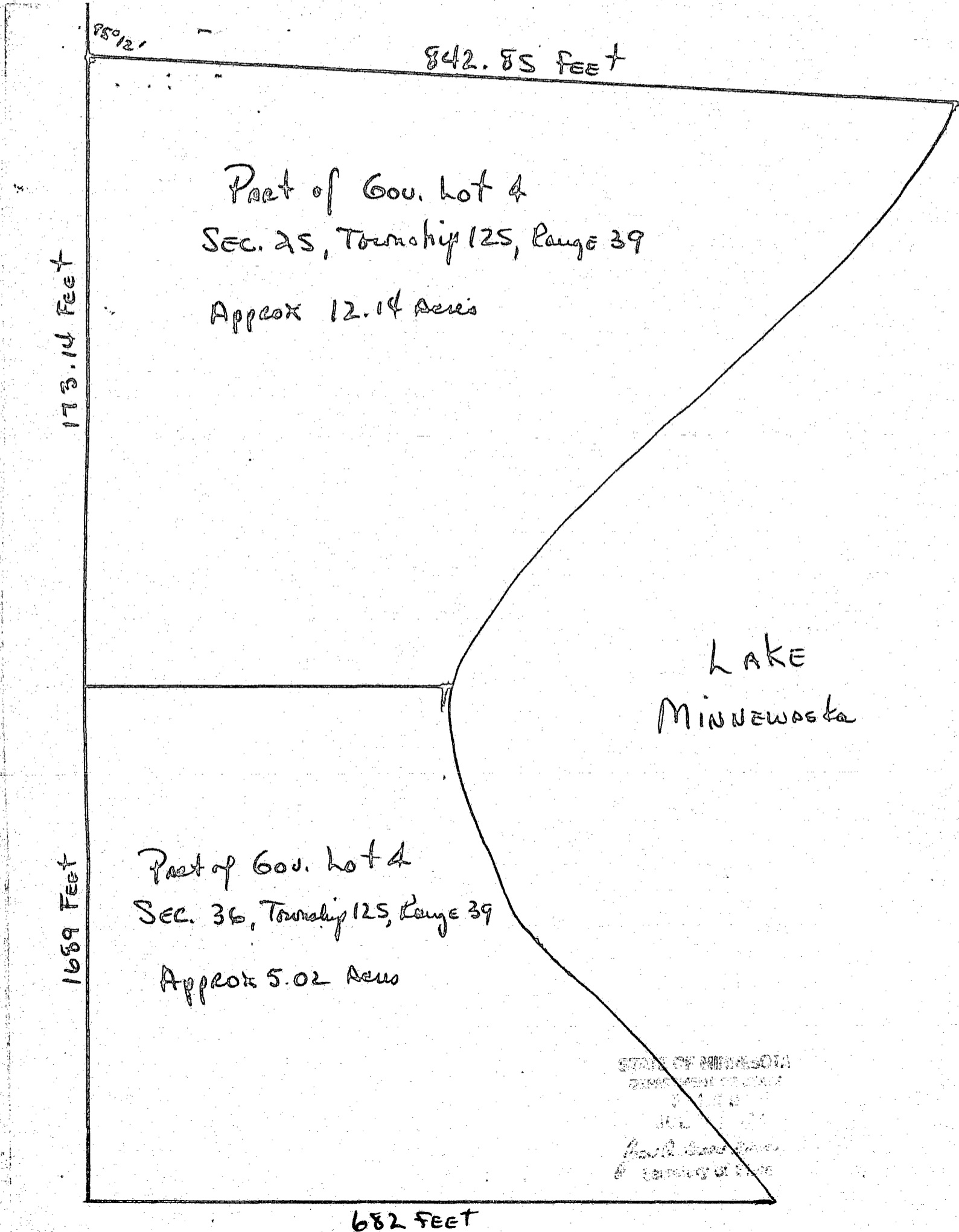
*Adolph Carlson*  
Adolph Carlson,  
City Clerk

Dated: April 11, 1977

STATE OF MINNESOTA  
DEPARTMENT OF STATE  
FILED  
JUL 12 1977

*Jean Anderson Howe*  
Secretary of State

#30772



95°12'

842.85 FEET

Part of Gov. lot 4  
Sec. 25, Township 125, Range 39  
Approx 12.14 Acres

173.14 Feet

LAKE  
MINNEWAPKA

Part of Gov. lot 4  
Sec. 36, Township 125, Range 39  
Approx 5.02 Acres

1689 Feet

682 FEET

STATE OF MINNESOTA  
DEPARTMENT OF COMMERCE  
JULY 1914  
J. L. ...  
Surveyor of State