

STATE OF MINNESOTA
MUNICIPAL BOARD

Suite 165 Metro Square
7th & Robert Streets
St. Paul, Minnesota 55101
October 8, 1976

Ms. Ione Nelson
City Clerk
Village of Barnum
Barnum, Minnesota 55707

Re: Docket Number A-2828 Ordinance Number #47
Barnum

Dear Sir:

The Minnesota Municipal Board acknowledges receipt and filing of the above Ordinance and filing fee in accordance with Minnesota Statutes, Chapter 414 and the Rules of Procedure.

According to law, this annexation is final upon filing a copy of the ordinance with the Town Clerk, County Auditor and Secretary of State in addition to the Municipal Board.

Please refer to the above docket and ordinance numbers in any future reference to this annexation.

Sincerely yours,

MUNICIPAL BOARD

Patricia D. Lundy
Assistant Executive Secretary

PDL/eas

c.c. Secretary of State
County Auditor
Township
Attorney
Municipality

30031

Barnum

VILLAGE OF BARNUM

Barnum, Minnesota 55707

August 5, 1975

Secretary of State
Centennial Office Building
St. Paul, MN 55101

Dear Sir:

This annexation was approved by the City Council of Barnum at the May 14, 1973 meeting. It was also approved by the Barnum Township Board at their May 21, 1973 meeting. The City Clerk at that time never finished the procedure because he was informed that the legal description was incomplete.

I am sending a copy of the original deed which includes the description. If there are any questions please contact this office.

Sincerely yours,

Ione Nelson

Ione Nelson
City Clerk

#30031
STATE OF MINNESOTA
DEPARTMENT OF STATE
FILED
OCT 19 1976

Joan Anderson Howe
Secretary of State

ORDINANCE NO. 47

AN ORDINANCE EXTENDING THE CORPORATE LIMITS OF THE CITY OF BARNUM TO INCLUDE CERTAIN UNINCORPORATED TERRITORY COMPLETELY SURROUNDED (BORDERED) BY LAND WITHIN THE CITY LIMITS AND A VOTING THEREON.

WHEREAS, certain territory described below is not presently included within the corporate limits of any incorporated city, or borough; and
WHEREAS, this territory is completely surrounded on all sides (60% or more of the perimeter of this territory is bordered) by lands already included within the corporate limits of the city and is deemed to be urban in character;

The city council of Barnum ordains:

Section 1. Territory annexed. The corporate limits of the city of Barnum, Minnesota, are hereby extended to include the platted (unplatted) territory described as follows, which territory now is and has heretofore been completely surrounded (60% or more of the perimeter of which territory is bordered) by territory already included within the city limits: TOWN OF BARNUM TOWNSHIP 47 RANGE 18, SW 1/4 of SW 1/4 S OF CAR 6 / W OF HWY 35 DOCKET 183493 SEC 031 TWN 047 RG 18
The above description contains one-eighth 1/8 Acre more or less.

Section 2. Filing. The city clerk is directed to file certified copies of this ordinance with the Secretary of State, the County Auditor of the county in which the property is located, the Town Clerk of the affected township and the Minnesota Municipal Commission.

Section 3. Effective date of annexation. This ordinance takes effect upon passage and publication and the filing of certified copies as directed in Section 2.

Adopted by the city council of Barnum, Minnesota, 7-14, 1975.

ATTEST:

James Wilson
Clerk

Robert G. Johnson
Mayor

Published in Barnum Herald, 1975.

7-22-75

#30031
STATE OF MINNESOTA
DEPARTMENT OF STATE
FILED
OCT 19 1976
Jean Anderson Howe
Secretary of State

Taxes Paid and Transfer entered
on the 21st day of May 1969
William E. Carlson
CARLTON COUNTY AUDITOR

I hereby certify that taxes due & payable
1969 on the lands described within are paid
Berk Anderson
County Treasurer, Carlton County, Minn

To Have and to Hold the Same, Together with all the hereditaments and appurtenances
thereunto belonging or in anywise appertaining, to the said party of the second part, its successors
and assigns, Forever. And the said

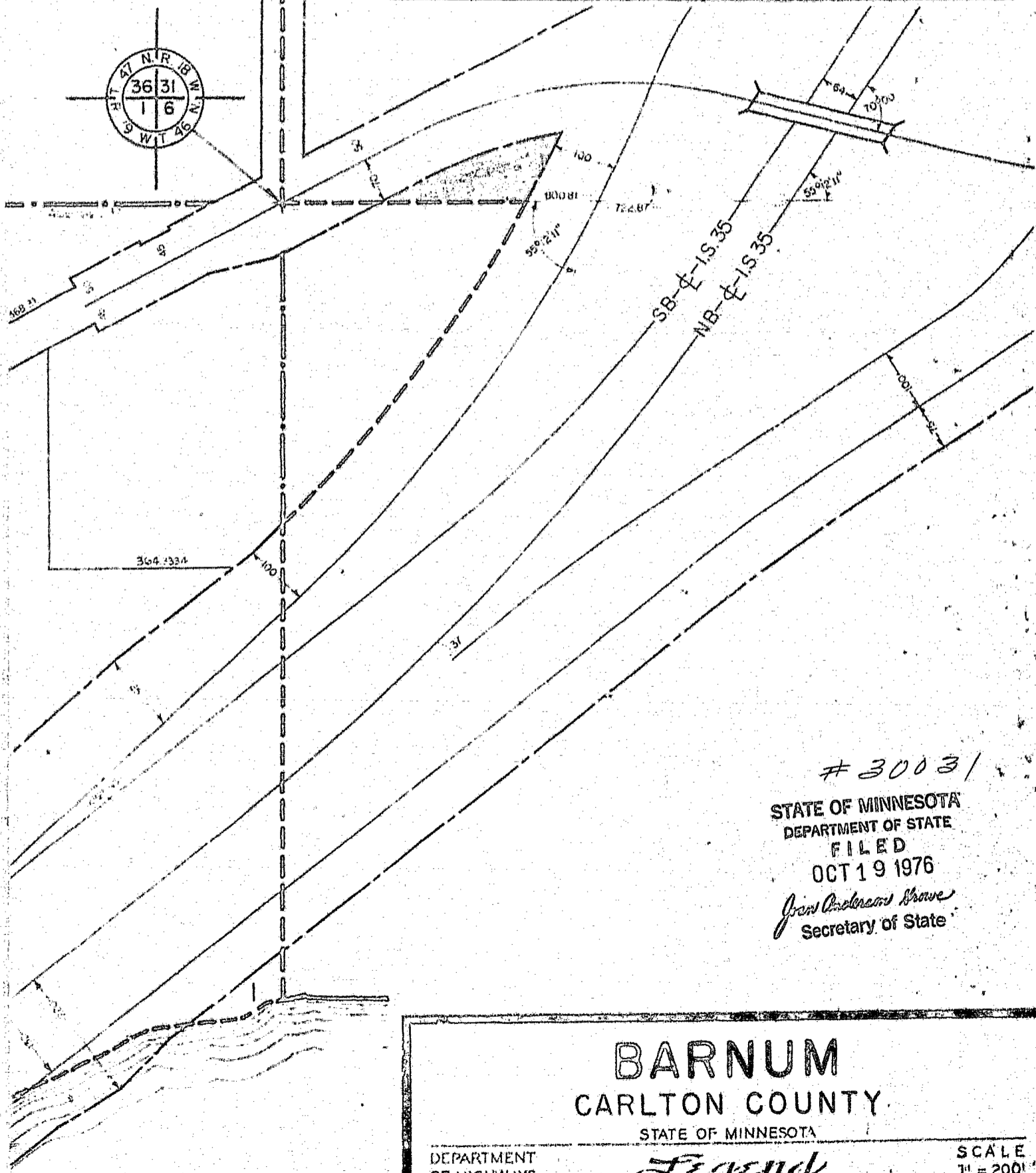
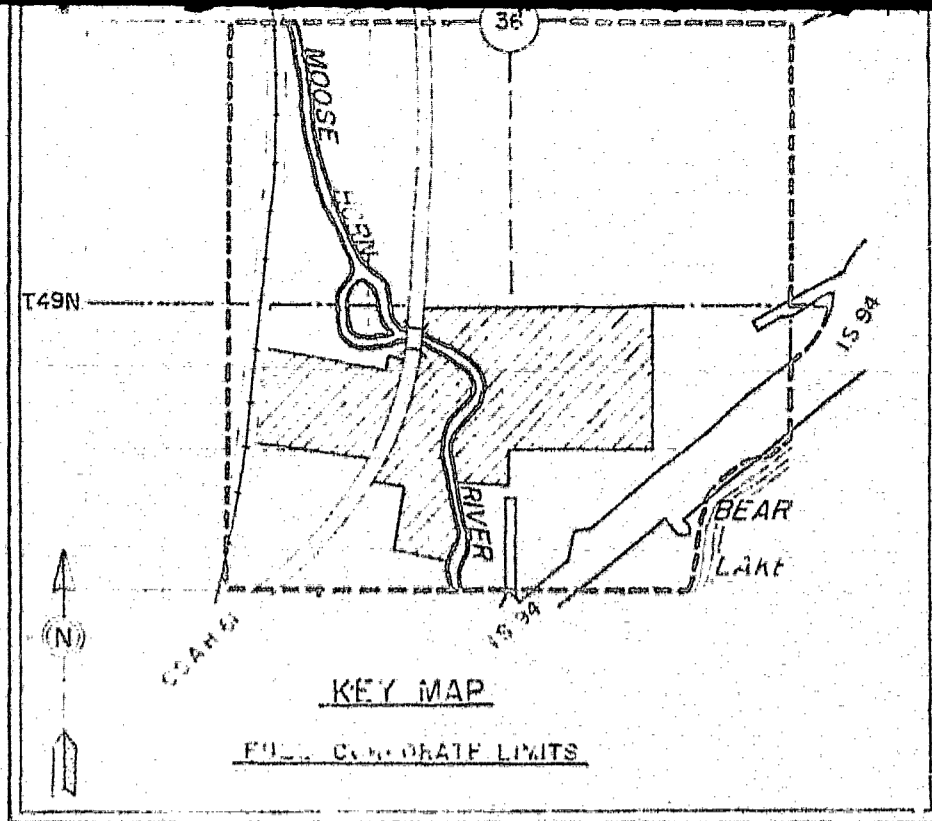
part
of the first part, for themselves, their heirs, executors and administrators, do
covenant with the said party of the second part, its successors and assigns, that they are well
seized in fee of the lands and premises aforesaid, and have good right to sell and convey the same in
manner and form aforesaid, and that the same are free from all incumbrances.

And the above bargained and granted lands and premises, in the quiet and peaceable possession of the
said party of the second part, its successors and assigns, against all persons lawfully claiming or to
claim the whole or any part thereof, subject to incumbrances, if any, hereinbefore mentioned, the
its successors and assigns, forever, all the tract or parcel of land lying and being in the County
of Carlton and State of Minnesota, described as follows, to-wit:

That part of the SW $\frac{1}{4}$ of the SW $\frac{1}{4}$, Section 11, Twp. 47N, Range
16W that lies southerly from County State Aid Highway No. 6
and westerly from Trunk Highway No. 35, except right of way
for public roads and public utility easement.

State deed tax \$2.20

#30031
STATE OF MINNESOTA
DEPARTMENT OF STATE
FILED
OCT 19 1976
Glen Anderson Shaver
Secretary of State



30031
STATE OF MINNESOTA
DEPARTMENT OF STATE
FILED
OCT 19 1976
John Anderson Browe
Secretary of State

BARNUM
CARLTON COUNTY
STATE OF MINNESOTA

DEPARTMENT OF HIGHWAYS

Legend

SCALE
1" = 200'

ROAD DESIGNATIONS — U S HIGHWAY — STATE HIGHWAY