

An Equal Opportunity Employer

Phone: 296-2428



STATE OF MINNESOTA
MUNICIPAL BOARD

Suito 165 Metro Square
7th & Robert Streets
St. Paul, Minnesota 55101

September 10, 1976

Ms. LaVonne B. Sundlee
City Clerk
103 Canton Avenue
Box 311
Montevideo, Minnesota 56265

Re: Docket Number A-2970 Ordinance Number #498
Montevideo
Arnold and Kenneth Anderson Property

Dear Sir:

The Minnesota Municipal Board acknowledges receipt and filing of the above Ordinance and filing fee in accordance with Minnesota Statutes, Chapter 414 and the Rules of Procedure.

According to law, this annexation is final upon filing a copy of the ordinance with the Town Clerk, County Auditor and Secretary of State in addition to the Municipal Board.

Please refer to the above docket and ordinance numbers in any future reference to this annexation.

Sincerely yours,

MUNICIPAL BOARD

Patricia D. Lundy
Patricia D. Lundy
Assistant Executive Secretary

PDL/eas

c.c. Secretary of State
County Auditor
Township
Attorney
Municipality

29937

ORD. NO. 498

AN ORDINANCE EXTENDING THE CORPORATE LIMITS
OF THE CITY OF MONTEVIDEO TO INCLUDE CERTAIN
LANDS ABUTTING UPON THE CITY LIMITS

WHEREAS, a certain Petition requesting annexation of the territory hereinafter described was duly presented to the Council on the 7th day of June, 1976; and

WHEREAS, the quantity of land embraced within the area described in the Petition and bounded as described is 6.73 acres of land being platted, no part of which is included within the limits of any incorporated city, village or borough; and

WHEREAS, the Petition was signed by Arnold C. Anderson and Kenneth W. Anderson, they being all the owners of the premises therein described; and

WHEREAS, objections to said annexation and the sixty (60) day waiting period required by statute for such objections have been waived; and

WHEREAS, the land described in the Petition abuts upon the City limits at the westerly boundary thereof;

THE CITY OF MONTEVIDEO DOES ORDAIN:

1. The City Council hereby determined: (1) that the annexation will be to the best interests of the City and of the territory affected; (2) that the territory described herein abuts upon the City limits and is urban or suburban in character; and (3) that none of said territory is now included within the city limits of any city, village or borough.

2. Territory Annexed: The corporate limits of the City are hereby extended to include the land described as follows and the same is hereby annexed to and included within the City as effectually as if it had originally been a part thereof:

That part of Lots Eleven and Twelve (11 & 12) of the Plat of Lots East of the Chippewa River in the West Half of the Northeast Quarter (W $\frac{1}{2}$ of NE $\frac{1}{4}$) and the East Half of the Northwest Quarter (E $\frac{1}{2}$ of NW $\frac{1}{4}$), in Section Seven (7), Township One Hundred Seventeen (117) North, Range Forty (40) West of the Fifth Principal Meridian, which is being platted as "Oak Bluff".

3. That said premises are hereby annexed to and made a part of the City of Montevideo and are zoned as R - "Residential".

4. Filing: The City Clerk is hereby directed to file certified copies of this Ordinance with the Minnesota Municipal Commission, the Secretary of State, the County Auditor and the Register of Deeds.

5. Effective Date: This Ordinance takes effect upon its passage and publication and the filing of the certified copies as directed in paragraph 4.

Passed and adopted this 19th day of July, 1976.

Lawrence R. Botke
President - City Council

ATTEST:

LaVonne B. Sundlee
City Clerk

The foregoing Ordinance is hereby approved this 19th day of July, 1976.

John L. Mills
Mayor

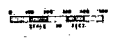
STATE OF MINNESOTA)
COUNTY OF CHIPPEWA) SS
CITY OF MONTEVIDEO)

I, LaVonne B. Sundlee, duly appointed, qualified and acting City Clerk in and for the City of Montevideo, do hereby certify that the above Ordinance No. 498 is on file in my office, said Ordinance No. 498 was duly adopted by the City Council July 19, 1976.

LaVonne B. Sundlee
LaVonne B. Sundlee, City Clerk

29937
STATE OF MINNESOTA
DEPARTMENT OF STATE
FILED
SEP 20 1976
John Anderson
Secretary of State

CITY OF
MONTEVIDEO, MINNESOTA
CHIPPEWA COUNTY

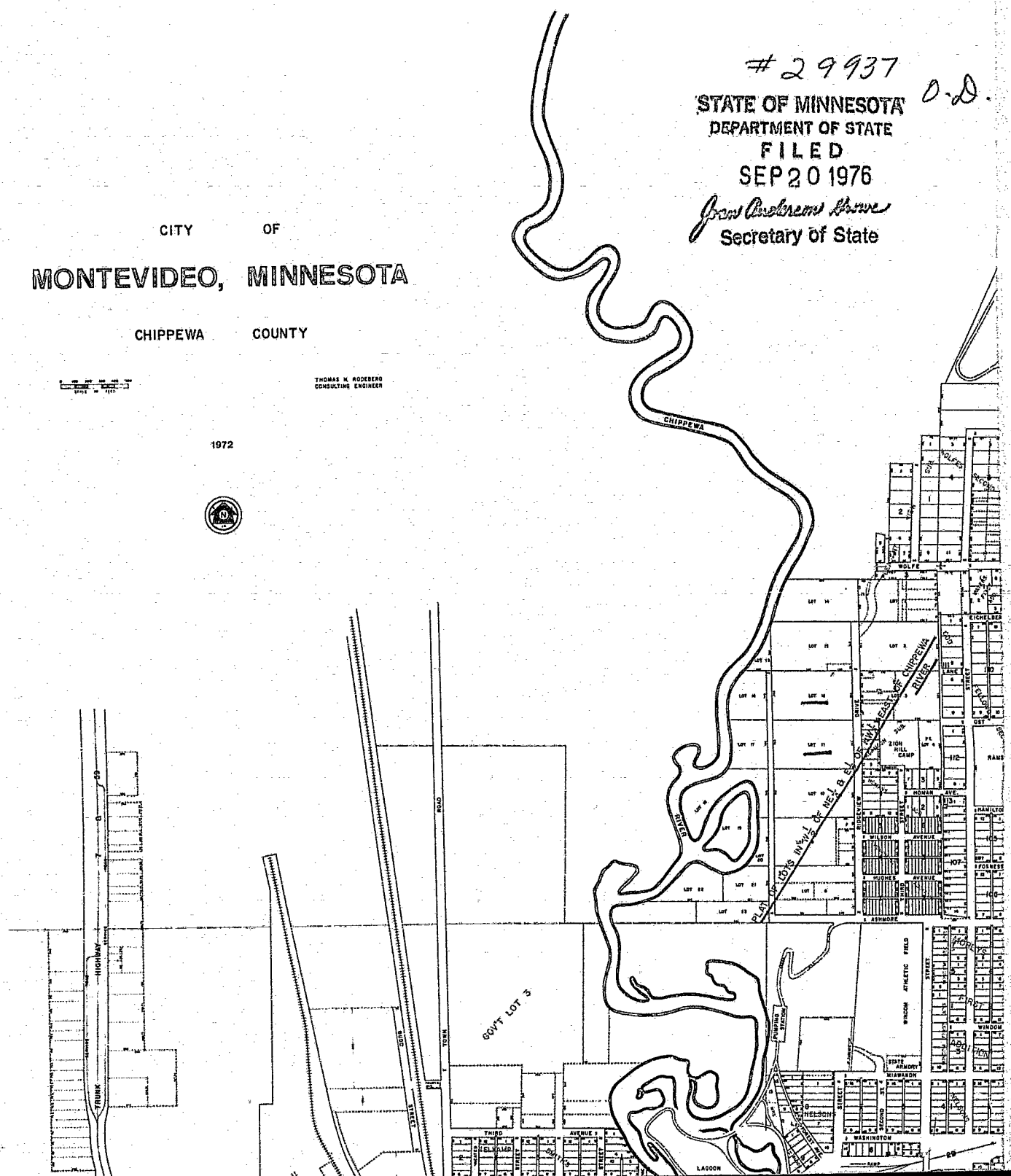


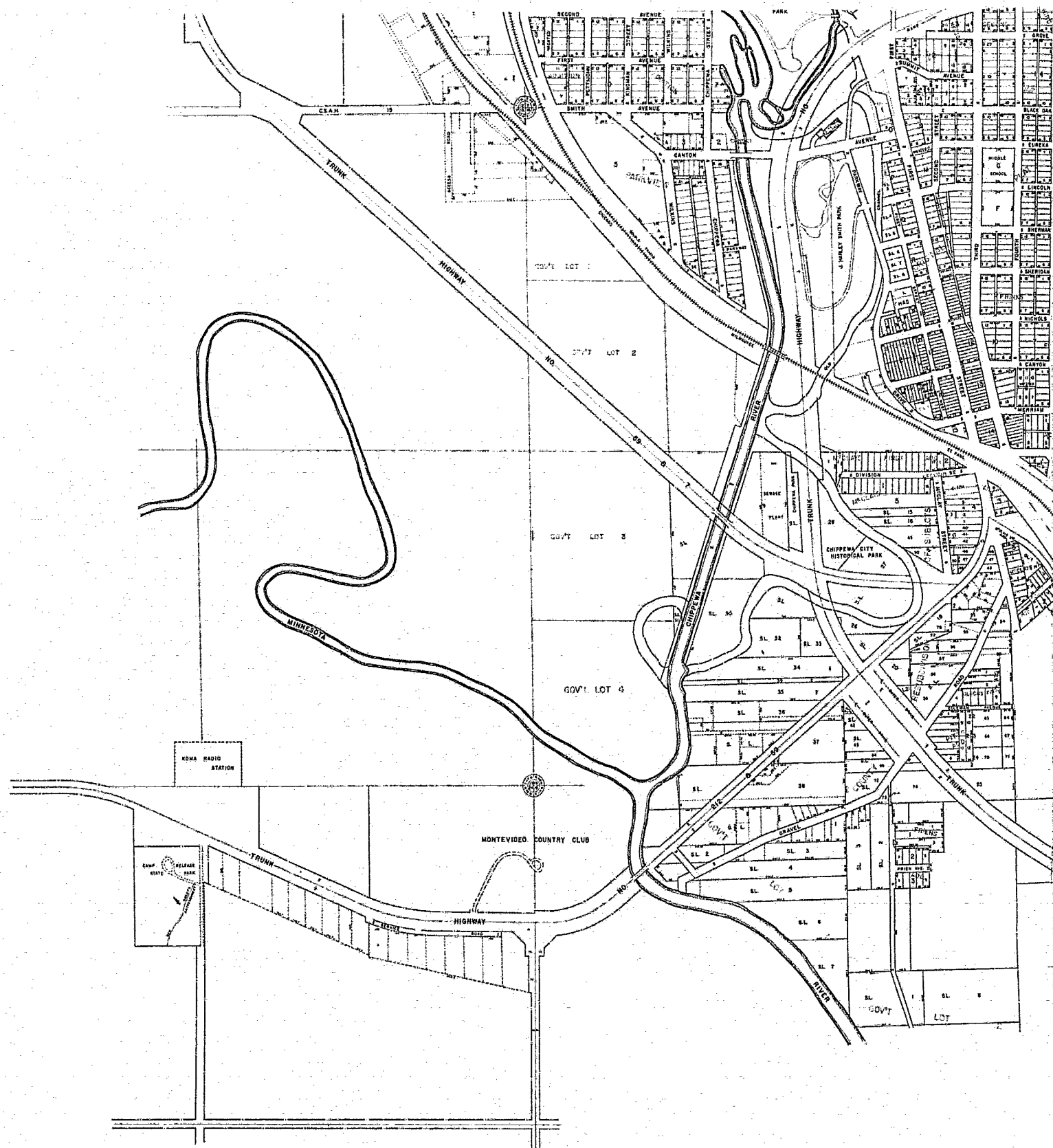
THOMAS K. ROOSEBERG
CONSULTING ENGINEER

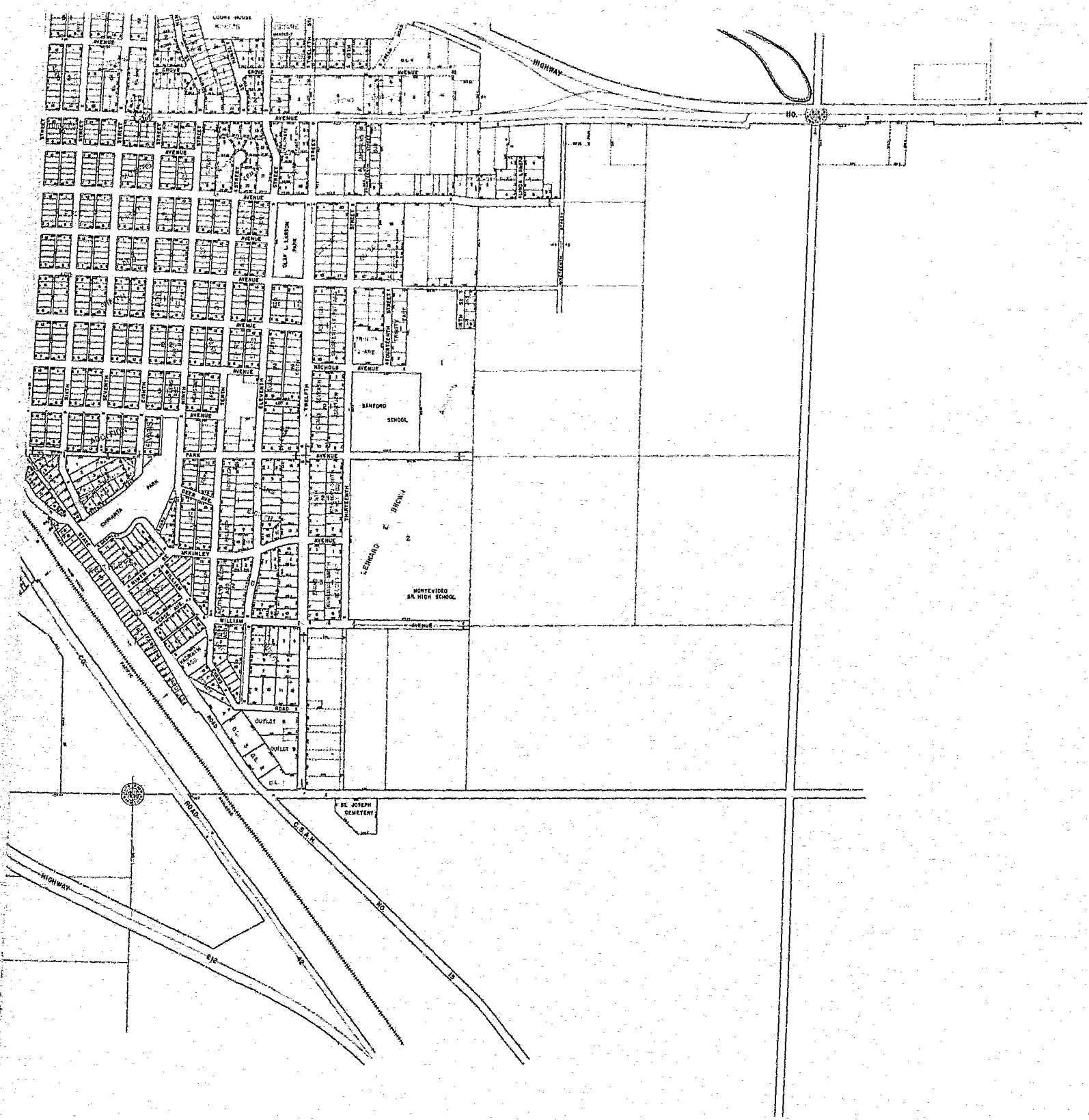
1972

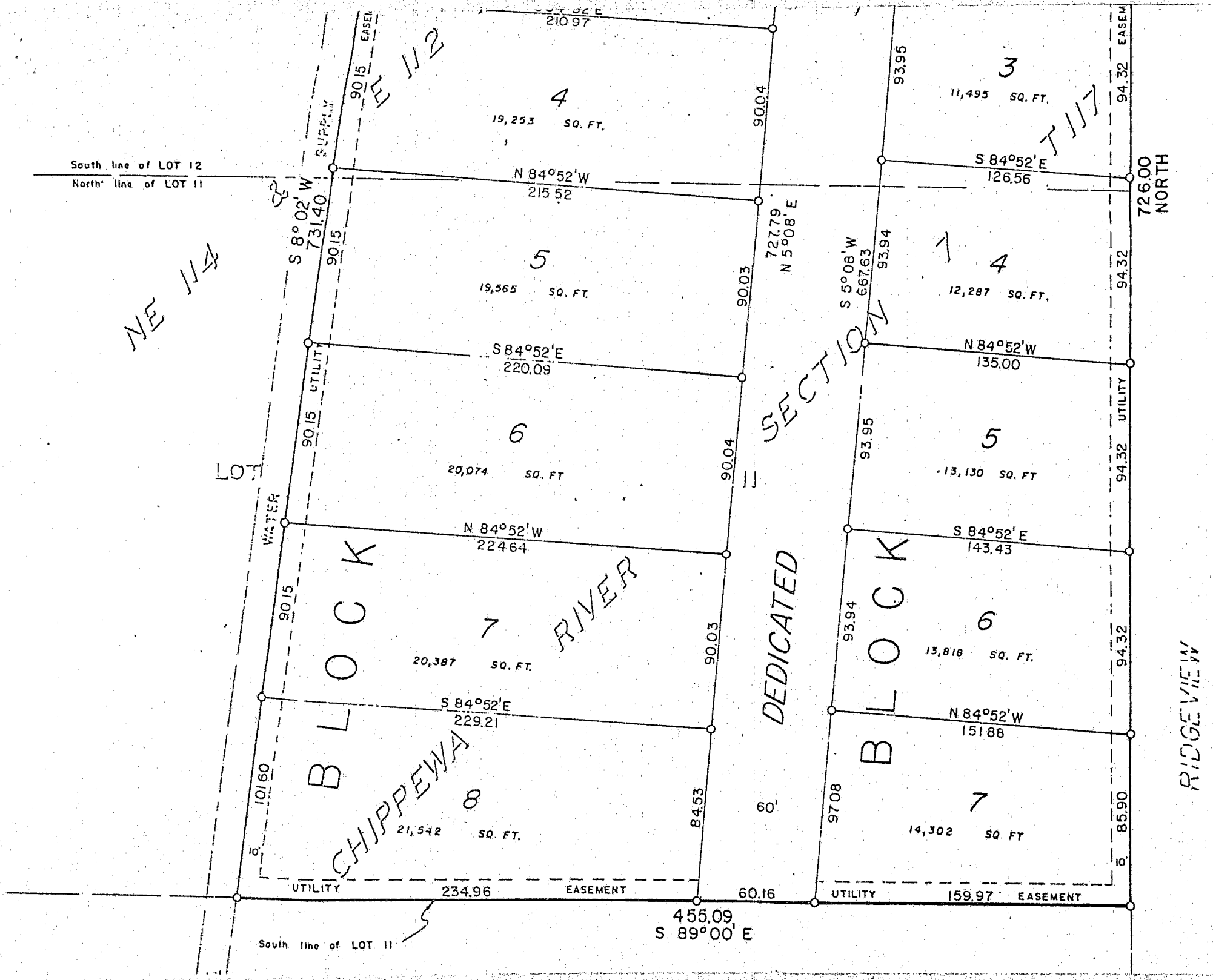


29937
STATE OF MINNESOTA
DEPARTMENT OF STATE
FILED
SEP 20 1976
John Andrew Howe
Secretary of State









South line of LOT 12
North line of LOT 11

NE 1/4

NW 1/4

LOT

WATER

UTILITY

EASEMENT

UTILITY

EASEMENT

UTILITY

EASEMENT

South line of LOT 11

4
19,253 SQ. FT.

5
19,565 SQ. FT.

6
20,074 SQ. FT.

7
20,387 SQ. FT.

8
21,542 SQ. FT.

3
11,495 SQ. FT.

4
12,287 SQ. FT.

5
13,130 SQ. FT.

6
13,818 SQ. FT.

7
14,302 SQ. FT.

SECTION

DEDICATED

BLOCK

BLOCK

CHIPPEWA

RIDGEMOUNT

726.00 NORTH

455.09
S 89°00' E

210.97

N 84°52'W
215.52

S 84°52'E
220.09

N 84°52'W
224.64

S 84°52'E
229.21

234.96 EASEMENT

90.04

90.04

90.03

90.04

90.03

84.53

60.16

93.95

727.79
N 5°08'E

S 5°08'W
667.63

93.95

93.94

97.08

UTILITY

S 84°52'E
126.56

N 84°52'W
135.00

S 84°52'E
143.43

N 84°52'W
151.88

159.97 EASEMENT

94.32 EASEM

94.32

94.32

94.32

85.90

UTILITY

PLAT OF LOTS IN THE W 1/2

LOT 13

LOT

NW 1/4

