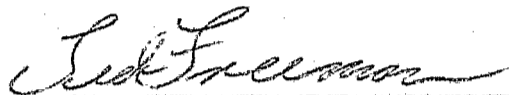


SECTION 2. The City Clerk is directed to file certified copies of this Ordinance, together with the Affidavit of Publication thereof, with the Secretary of State, the County Auditor of Chisago County, Minnesota and the Minnesota Municipal Commission.

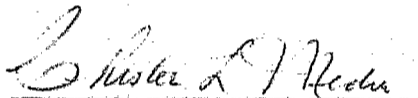
SECTION 3. This Ordinance takes effect upon its passage and publication according to law.

Adopted by the City Council of the City of Chisago City, Minnesota this 11th day of December, 1975.

  
Ted Freeman, Mayor

SEAL

Attest

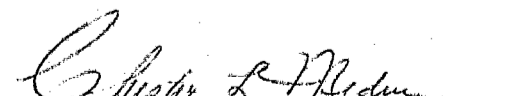
  
Chester L. Medin, Clerk

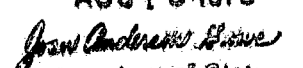
STATE OF MINNESOTA  
COUNTY OF CHISAGO

The undersigned being duly qualified and acting City Clerk of the City of Chisago City do hereby certify that the foregoing is a true and exact copy of the Ordinance enacted by the City of Chisago City pertaining to the annexation of certain real estate thereto described therein, and that I have compared the original thereof on file in my office with the same and that the above is a true, full and complete transcript therefrom as far as the same relates to the matters stated therein.

WITNESS my hand as City Clerk and of the seal of the City this 18<sup>th</sup> day of December, 1975

SEAL

  
Chester L. Medin, City Clerk

#29846  
STATE OF MINNESOTA  
DEPARTMENT OF STATE  
FILED  
AUG 18 1976  
  
Secretary of State

An Equal Opportunity Employer

Phone: 296-2428



STATE OF MINNESOTA  
MUNICIPAL BOARD

Suite 165 Metro Square  
7th & Robert Streets  
St. Paul, Minnesota 55101

August 13, 1976

Mr. Chester L. Medin  
City Clerk  
City Hall  
Chisago City, Minnesota 55013

Re: Docket Number A-2857      Ordinance Number #96  
Chisago City  
Hazel Cornwell Annexation

Dear Sir:

The Minnesota Municipal Board acknowledges receipt and filing of the above Ordinance and filing fee in accordance with Minnesota Statutes, Chapter 414 and the Rules of Procedure.

According to law, this annexation is final upon filing a copy of the ordinance with the Town Clerk, County Auditor and Secretary of State in addition to the Municipal Board.

Please refer to the above docket and ordinance numbers in any future reference to this annexation.

Sincerely yours,

MUNICIPAL BOARD

A handwritten signature in cursive script that reads "Patricia D. Lundy".

Patricia D. Lundy  
Assistant Executive Secretary

PDL/eas

c.c. Secretary of State  
County Auditor  
Township  
Attorney  
Municipality

ORDINANCE NO. 96

An Ordinance extending the corporate limits of the City of Chisago City, Minnesota.

WHEREAS the territory described below is not presently within the corporate limits of any incorporated, city, village or borough, and,

WHEREAS the sole owners of the property described below petitioned the City Council of the City of Chisago City, Minnesota on the 23rd day of September, 1975 to annex the same to the City of Chisago City, and,

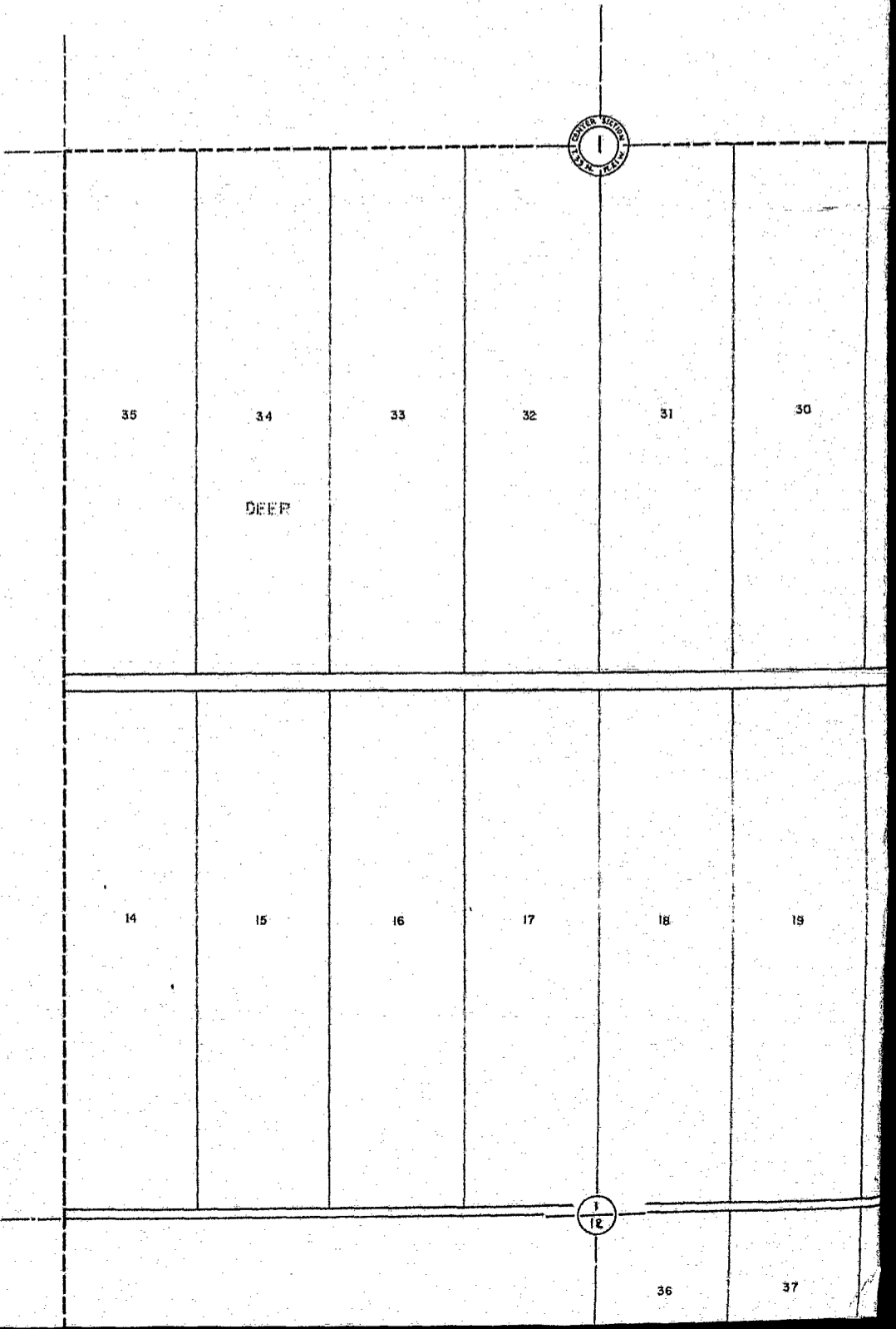
WHEREAS, by resolution adopted by the City Council on September 29, 1975 and served upon the Chisago County Board of Commissioners, The Chisago Lakes Township Board and the Minnesota Municipal Commission by mailing a copy of same to each of them on the 6th day of October, 1975, the said City Council expressed its intention to annex the territory described below to said City, and,

WHEREAS no objections have been received from any party as to the proposed annexation.

NOW THEREFORE the City Council of the City of Chisago City, Chisago County, Minnesota ordains as follows:

SECTION 1. The corporate limits of the City of Chisago City are hereby extended to include the property legally described as follows:

Lots 14, 15, 16 in Block 44;  
North half of Lots 5 and 12 and all of  
Lots 6, 7, 8, 9, 10, and 11 in Block 49  
Chisago City plat.



35

34

33

32

31

30

DEER

14

15

16

17

18

19



36

37

LAKE ELLEN  
(DRY)

400 RL

50  
75

□



1445.4

LAKELAND

1450

GARDENS

AVE.

T.H. 8

LAKE MARTHA

29

28

27

26

25

NORTH

26

25

AVE.

BLOOM

MAIN

27

16

ST.

13

ST.

28

BERGLUND

ISABEL

20

WEST

21

SOUTH

18

WEST

RAILROAD

6

ST.

12

MAIN

12

LAKE

DAHL

16

BLUFF ST.

20

21

22

23

WYOMING

PLACE

LAKE

GARDEN

ST.

2

GOV'T

HAYES ST.

CLERK'S

OF LOT

LOT 5

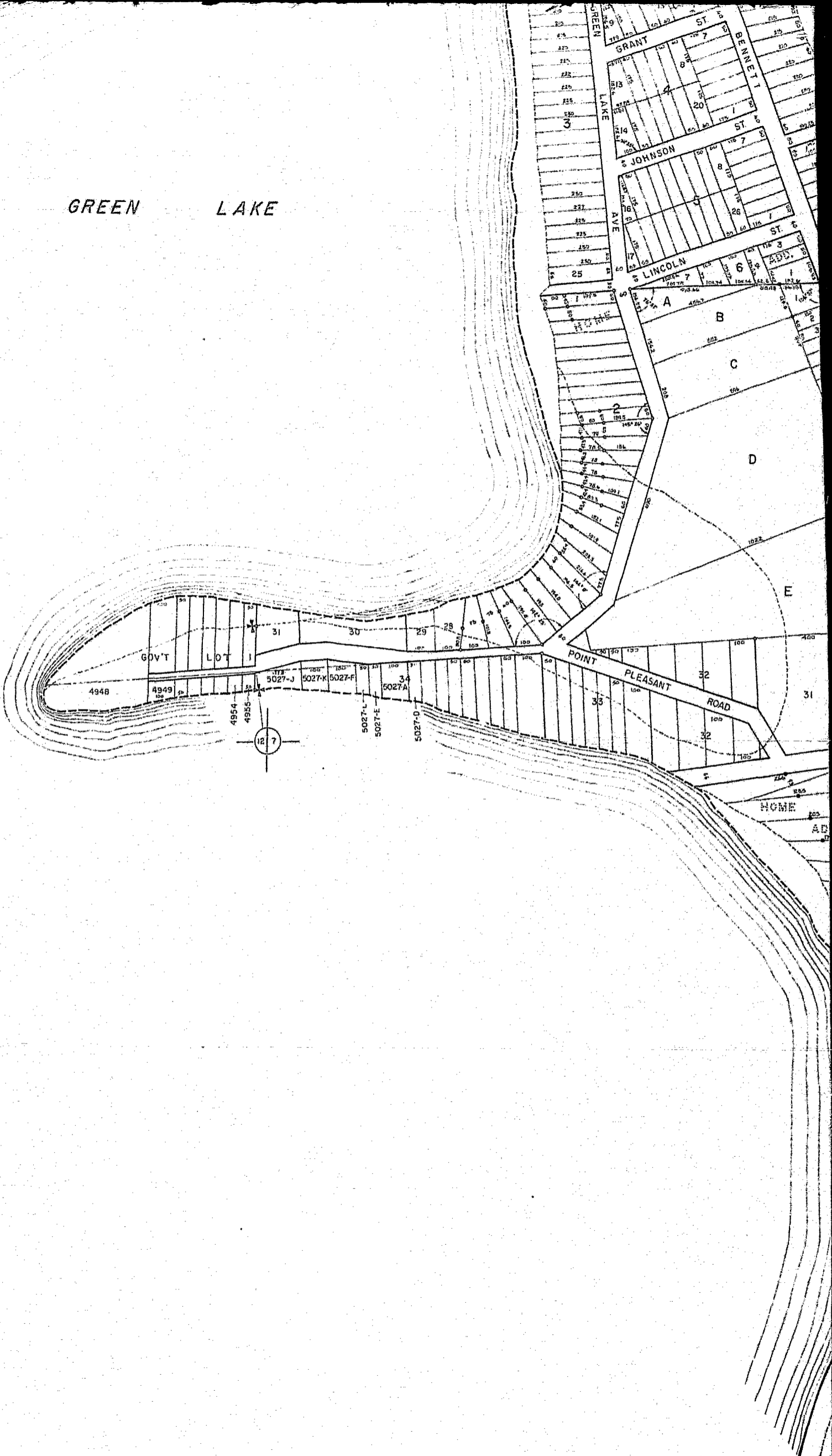
GARDENS

38



T.H. 8

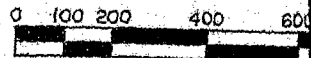
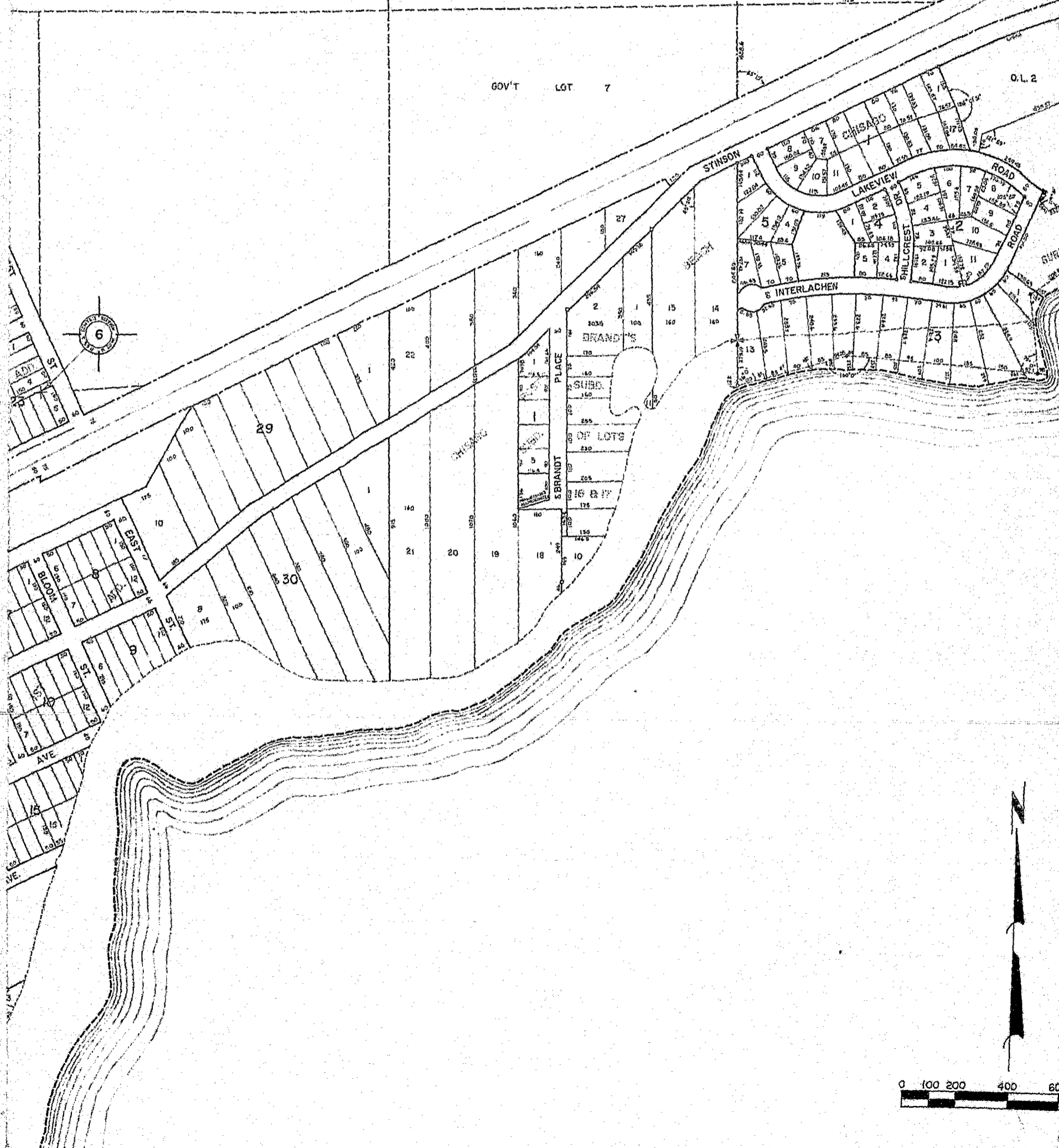
# GREEN LAKE





GOV'T LOT 7

D.L. 2



CHICAGO

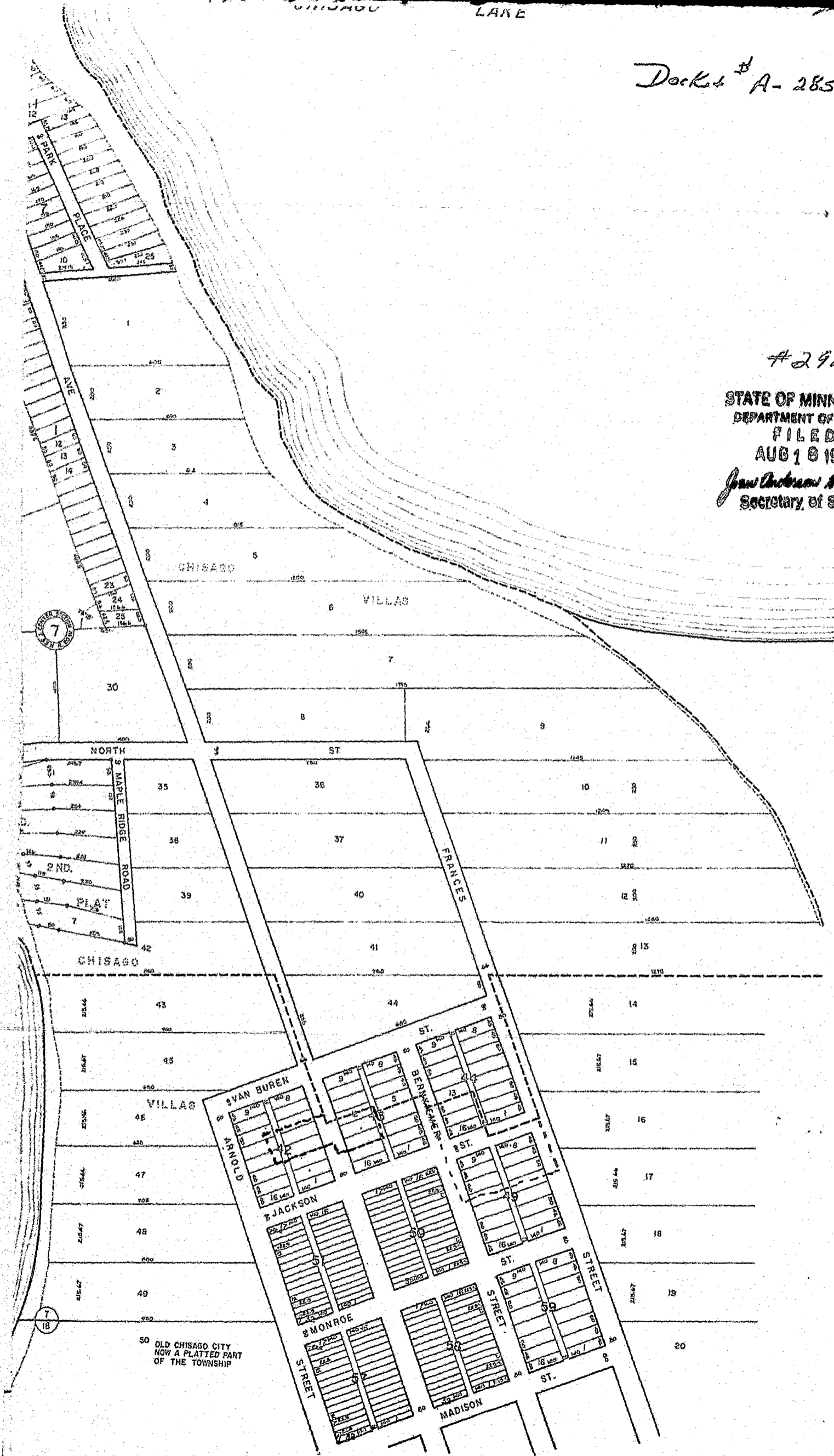


Docket # A-2857 Chisago City  
Hoard Council  
Annexation

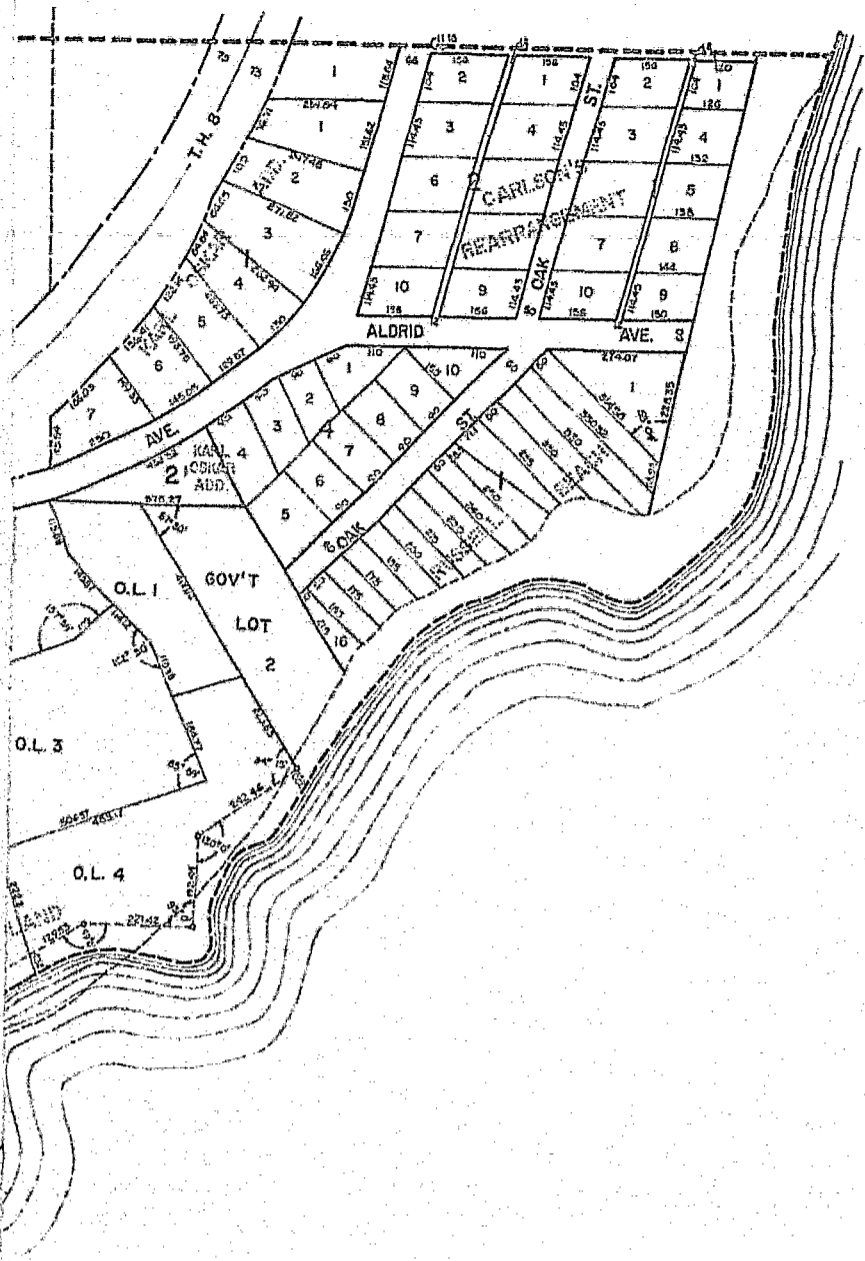
CHISAGO  
MINNESOTA

#29846

STATE OF MINNESOTA  
DEPARTMENT OF STATE  
FILED  
AUG 18 1976  
*John Anderson Howe*  
Secretary of State



*Proposed Annexation  
City Limits*



#29846

0-2

CITY