

An Equal Opportunity Employer

Phone: 296-2428



STATE OF MINNESOTA  
MUNICIPAL COMMISSION

304 Capitol Square Building  
10th & Cedar Streets  
St. Paul, Minnesota 55101  
Dec. 10, 1974

Mr. R. B. Tubbesing, Clk.-Treas.  
City Hall  
Red Wing, Minnesota 55066

Re: Docket Number A-2623 Ordinance Number 50

Dear Sir:


The Minnesota Municipal Commission acknowledges receipt and filing of the above Ordinance and filing fee in accordance with Minnesota Statutes, Chapter 414 and the Rules of Procedure.

According to law, this annexation is final upon filing a copy of the ordinance with the Town Clerk, County Auditor and Secretary of State in addition to the Municipal Commission.

Please refer to the above docket and ordinance numbers in any future reference to this annexation.

Sincerely yours,

MUNICIPAL COMMISSION

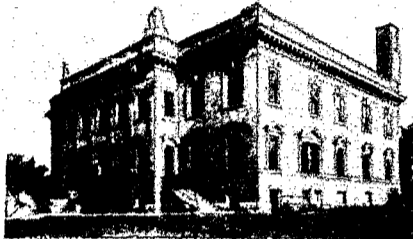
  
Patricia D. Lundy  
Asst. Executive Secretary

PDL/mg

c.c. Secretary of State  
County Auditor  
Township  
Attorney  
Municipality

37446

*Red Wing*



CITY HALL

## City of Red Wing

Minnesota 55066

DEMETRIUS G. JELATIS, MAYOR

R. B. TUBBESING, CITY CLERK

November 25, 1974

State of Minnesota  
Office of the Secretary of State  
180 State Office Building  
St. Paul, Minnesota 55101

RE: DOCKET NO. A-2623  
RED WING HI PARK GUERNSEY FARM ANNEXATION

Gentlemen:

I, R. B. Tubbesing, City Clerk of the City of Red Wing, Minnesota do hereby certify that the attached ordinance No. 50 is a copy of the ordinance extending the corporate limits of the City of Red Wing, Minnesota to include certain unincorporated unplatted land not exceeding 200 acres in area abutting upon the City Limits; said ordinance being passed at a regular meeting of the City Council held in the Council Chambers of the City Hall on Tuesday, November 12, 1974, and copies mailed to the Minnesota Municipal Commission, the Town Clerk of Hay Creek Township, the Goodhue County Auditor, and the Secretary of State on November 25, 1974.

Very truly yours,

*R. B. Tubbesing*

R. B. Tubbesing, City Clerk

RBT:vn  
Enc.

#27440  
STATE OF MINNESOTA  
DEPARTMENT OF STATE  
FILED  
DEC 18 1974  
*Arden J. Edsall*  
Secretary of State

ORDINANCE NO. 50

AN ORDINANCE EXTENDING THE CORPORATE LIMITS OF THE CITY OF RED WING, MINNESOTA, TO INCLUDE CERTAIN UNINCORPORATED UNPLATTED LAND NOT EXCEEDING 200 ACRES IN AREA ABUTTING UPON THE CITY LIMITS.

WHEREAS, a certain petition requesting annexation of the territory hereinafter described was duly presented to the council of the City of Red Wing on the 8th day of January, 1974; and

WHEREAS, the quantity of land embraced within the area described in the petition and bounded as described is approximately 80 acres of unplatted land, no part of which is included within the limits of an unincorporated city, village, or borough; and

WHEREAS, the petition was signed by all of the owners of the said land; and

WHEREAS, copies of the petition were duly filed with the Town Board of Hay Creek Township, the County Board of Goodhue County, and the Municipal Commission; and

WHEREAS, no objections to the annexation have been received from the town board or the county board; and

WHEREAS, the land described in the petition abuts upon the city limits at the south and west boundaries thereof; and

WHEREAS, more than 60 days have elapsed since the filing of the said petition with the City of Red Wing, the Town Board, the County Board, and the Municipal Commission;

NOW, THEREFORE, THE CITY COUNCIL OF THE CITY OF RED WING DO ORDAIN:

Section 1. The City Council hereby determines (1) that the annexation will be to the best interests of the City of Red Wing and of the territory affected; (2) that the territory described herein abuts upon the city limits and is about to become urban or suburban in character; and (3) that none of said territory is now included within the limits of any city, village or borough.

Section 2. Territory Annexed. The corporate limits of the City of Red Wing are hereby extended to include the unplatted land described as follows and the same is hereby annexed to and included within the City of Red Wing as effectually as if it had originally been a part thereof:

The Northerly one half (N-1/2) of the Southeast one quarter (SE-1/4) of Section 6, Township 112 North, Range 14 West, County of Goodhue, State of Minnesota of the Fifth Principal Meridian.

Section 3. Filing. The City Clerk is hereby directed to file certified copies of this ordinance with the Minnesota Municipal Commission, the Town Clerk of Hay Creek Township, the County Auditor, and the Secretary of State.

Section 4. Effective Date. This ordinance shall take effect 30 days after publication and upon filing of the certified copies as directed in Section 3.

Passed First Reading October 8, 1974

Passed Second Reading November 12, 1974

Approved November 12, 1974

Demetrius G. Jelatis  
Demetrius G. Jelatis, Mayor

R. B. Tubbesing  
R. B. Tubbesing  
City Clerk/Treasurer

7440  
STATE OF MINNESOTA  
DEPARTMENT OF STATE  
FILED

DEC 18 1974  
Arlen J. Edsall  
Secretary of State

( Publish ONCE - November 16, 1974 )