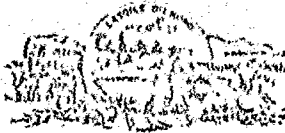


An Equal Opportunity Employer

Phone: 296-2428



STATE OF MINNESOTA  
MUNICIPAL COMMISSION

304 Capitol Square Building  
10th & Cedar Streets  
St. Paul, Minnesota 55101  
April 5, 1974

Miss Carole Grimm, Clerk  
City Hall  
Rochester, Minnesota 55901

Re: Docket Number A-2511 Ordinance Number 1741

Dear Sir:

The Minnesota Municipal Commission acknowledges receipt and filing of the above Ordinance and filing fee in accordance with Minnesota Statutes, Chapter 414 and the Rules of Procedure.

According to law, this annexation is final upon filing a copy of the ordinance with the Town Clerk, County Auditor and Secretary of State in addition to the Municipal Commission.

Please refer to the above docket and ordinance numbers in any future reference to this annexation.

Sincerely yours,

MUNICIPAL COMMISSION

A handwritten signature in cursive script, appearing to read "PDL".

Patricia D. Lundy  
Asst. Executive Secretary

PDL/mg

c.c. Secretary of State  
County Auditor  
Township  
Attorney  
Municipality

26641

**ORDINANCE NO. 1741**  
**AN ORDINANCE ANNEXING to the City of Rochester, Minnesota, Certain Platted Lands in Tocgood's Subdivision of a Part of the Southwest Quarter, Section 11, Township 106 North, Range 14 West, Olmsted County, Minnesota.**

**THE COMMON COUNCIL OF THE CITY OF ROCHESTER DO ORDAIN:**

Section 1. A petition has been filed with the Common Council of the City of Rochester, signed by a majority of the owners of the land described herein, requesting the Common Council to annex said land to the City of Rochester. The land described in said petition for annexation is located in Rochester Township, Olmsted County, Minnesota, and is described as follows:

Lot 1 and the south half of 16th Street Southwest adjoining said Lot 1, Tocgood's Subdivision of a part of the southwest quarter, Section 11, Township 106 North, Range 14 West, according to the plat hereof on file and of record in the office of the Register of Deeds in and for said county.

Said petition has also been filed with the Town Board of Rochester Township, with the County Board of the County of Olmsted, and with the Minnesota Municipal Commission, and the Town Board of Rochester Township has notified the City that it has no objections to the annexation of the above-described land.

Section 2. The quantity of land included in said petition is approximately 0.50 acres.

Section 3. The Common Council of the City of Rochester does hereby determine that the land described in Section 1 abuts upon the present territorial limits of the City of Rochester, is so conditioned as to be properly subjected to municipal government, and the annexation of said land will be in the best interest of the City of Rochester and the land affected.

Section 4. Therefore, the land described in Section 1 above is hereby annexed, added to and made a part of the City of Rochester, Minnesota, as effectually as if it had originally been a part thereof.

Section 5. Present and future owners of the area annexed by this ordinance are hereby notified that in addition to the usual assessments, it is the intention of the Common Council to assess against benefited property all or a portion of the cost of any storm sewer, water tower and trunk line sanitary sewer construction, heretofore or hereafter undertaken to serve the area annexed.

Section 6. This ordinance shall take effect and be in force from and after its official publication and from and after the filing of a certified copy hereof with the Minnesota Municipal Commission, the Rochester Town Clerk, the County Auditor and the Secretary of State.

Passed and adopted by the Common Council of the City of Rochester, Minnesota, this 17th day of December, 1973.

R. J. FOSTER  
President of said  
Common Council

Attest:  
CAROLE A. GRIMM  
City Clerk

Approved this 18th day of December, 1973.

ALEX P. SNEKTA  
Mayor of said City  
(Seal of the City of  
Rochester, Minnesota)  
(12/22 12/29)

# 26641

STATE OF MINNESOTA  
DEPARTMENT OF STATE  
FILED

APR 6 1974

*Arlen J. Ershel*  
Secretary of State

#1741

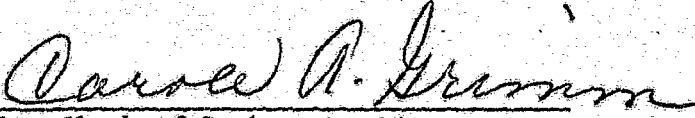
State of Minnesota,

County of Olmsted

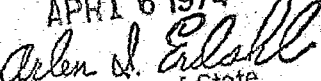
City of Rochester, SS

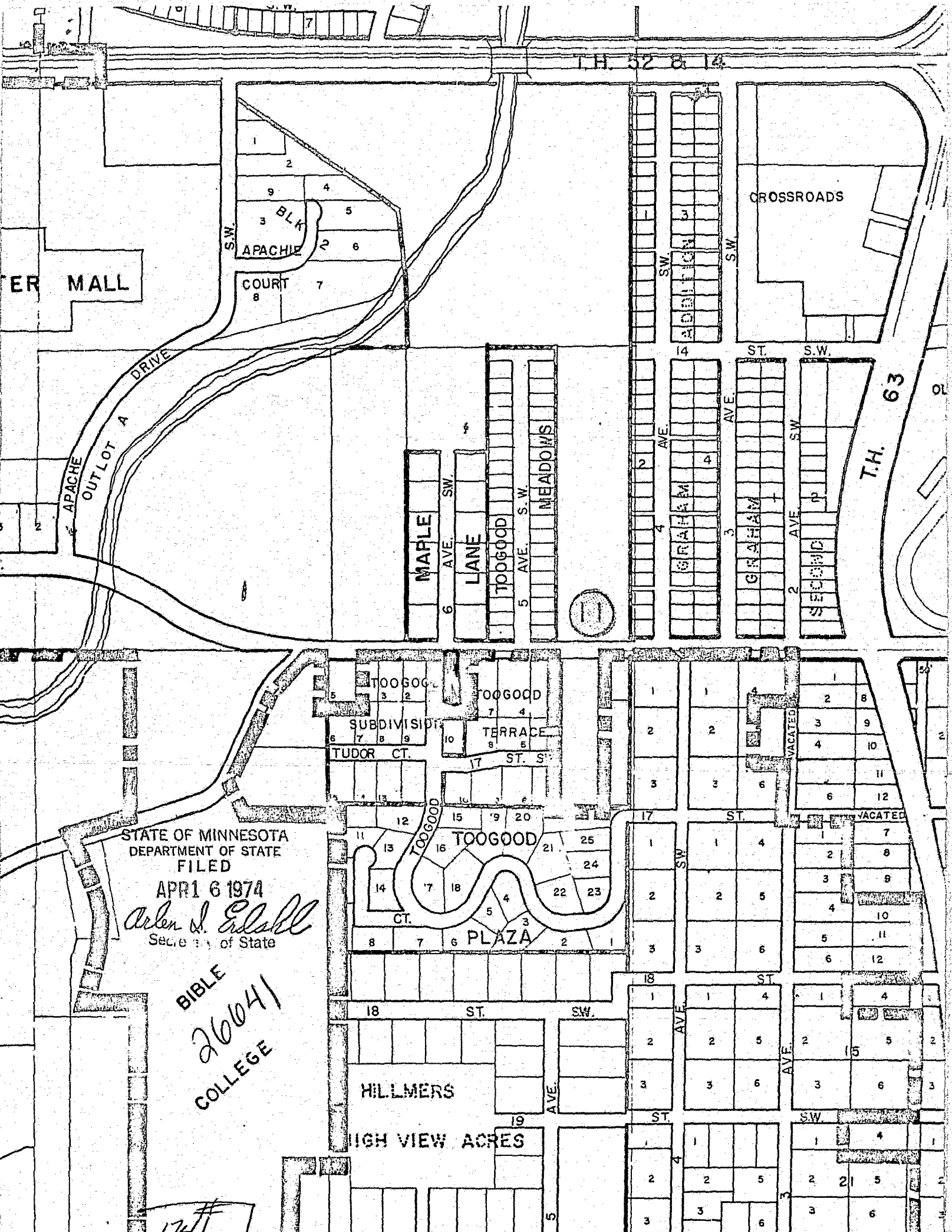
I, Carole A. Grimm, City Clerk of the City of Rochester, Minnesota do hereby certify that I have compared the attached copy of an ordinance with the original ordinance on file in my office and that the foregoing is a true and correct copy of the said ordinance and of the whole thereof.

Witness my hand this 14th day of March, 1974.

  
City Clerk of Rochester, Minnesota

(Seal of the City of  
Rochester, Minnesota)

# 26641  
STATE OF MINNESOTA  
DEPARTMENT OF STATE  
FILED  
APR 6 1974  
  
Secretary of State



STATE OF MINNESOTA  
DEPARTMENT OF STATE  
FILED  
APR 16 1974  
*Arlen J. Edvall*  
Secretary of State

BIBLE  
26641  
COLLEGE

1741