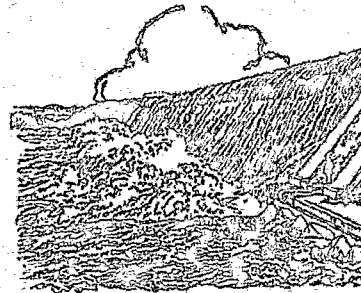


VILLAGE OF THOMSON

FOUNDED 1870 • INCORPORATED 1891

Entrance to Beautiful Jay Cook State Park

ROUTE ONE • CARLTON, MINNESOTA 55718



Thomson's "Niagara Falls"

Carlton, Minnesota
10/6/73

to: Secretary of State
State of Minnesota

Dear Sir;

The Village of Thomson has passed a Resolution changing
Their Dates of Village Elections.

Starting in 1973, the Village of Thomson will hold their
Election of Village Officers on the first Tuesday after the first Monday in
November of every odd numbered Year.

Respectfully,

Merton J. Sander
Merton J. Sander
Village Clerk

Council meets first Monday of each
month.

First county seat of Carlton County.
Heart of the sportman's paradise.
Beginning of 200-mile Scenic Drive.
Located on banks of St. Louis River.
Local scenery equal of Niagara Falls.

26332
STATE OF MINNESOTA
DEPARTMENT OF STATE
FILED

OCT 15 1973

Arlen J. Ershoff
Secretary of State